



Free Spirit

Flower Garden Quilt

Featuring *Secret Stream* by Snow Leopard

Curved Orange Peel piecing combines with a fun folded technique to create oversized flower blocks in this cute quilt.

Collection:

Secret Stream by
Snow Leopard

Technique:

Piecing, Curved Piecing

Skill Level:

Intermediate

Finished Size:

Finished Size of Project:
64" x 80" (1.63m x 2.03m)
Finished Block Size: 16" x 16"
(40.64cm x 40.64cm)

All possible care has been taken to assure the accuracy of this pattern. We are not responsible for printing errors or the manner in which individual work varies. Please read the instructions carefully before starting this project. If kitting, it is recommended a sample is made to confirm accuracy.

Project designed by Stacey Day and re-colored by FreeSpirit Fabrics
 Tech edited by Alison M. Schmidt

Fabric Requirements

DESIGN	COLOR	ITEM ID	YARDAGE
(A) Ember Brook	Multi	PWSL093.MULTI	½ yard (0.46m)
(B) Butterflies	Aqua	PWSL094.AQUA	½ yard (0.46m)
(C) Foxgloves	Multi	PWSL095.MULTI	½ yard (0.46m)
(D) Quackers	Aqua	PWSL096.AQUA	½ yard (0.46m)
(E) Toadstools	Multi	PWSL097.MULTI	½ yard (0.46m)
(F) Bluebells	Blue	PWSL098.BLUE	½ yard (0.46m)
(G) Little Bluebells	Pink	PWSL099.PINK	½ yard (0.46m)
(H) Shelley	Multi	PWSL100.MULTI	½ yard (0.46m)
(I) Daffodil Meadow	Yellow	PWSL101.YELLOW	½ yard (0.46m)
(J) Ferns	Green	PWSL102.GREEN	½ yard (0.46m)
(K) Turtle Shell	Black	PWSL103.BLACK*	2 yards (1.83m)
(L) Petals	Orange	PWSL104.ORANGE	⅝ yard (0.57m)
(M) Designer Essential Solids	Mist	CSFSESS.MISTX	5 yards (4.57m)

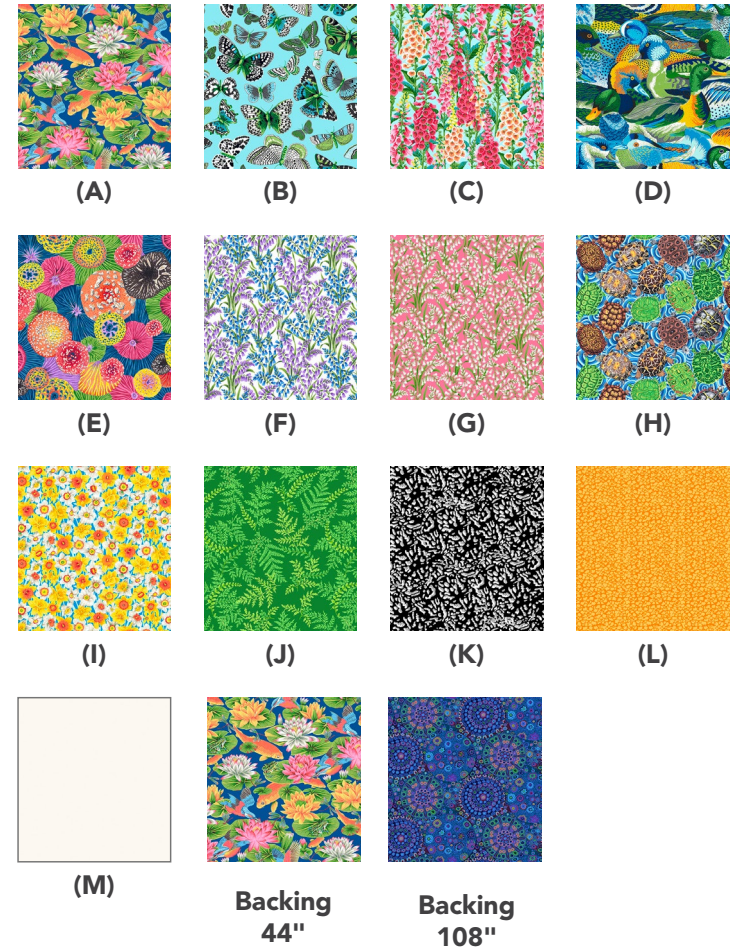
* includes binding

Backing (Purchased Separately)

44" (7.43m) wide			
Ember Brook	Multi	PWSL093.MULTI	5 yards (4.57m)
OR			
108" (2.51m) wide			
Millefiore Wide Back	Blue	QBG006.BLUE	2⅛ yards (1.94m)

Additional Recommendations

- 100% cotton thread in colors to match
- 72" x 88" (1.83m x 2.24m) batting
- **Optional:** Template plastic for tracing patterns



Preparation

Print, trim, and tape together Templates A and B on pages 7 - 8 as indicated on the template patterns. If using template plastic, trace patterns onto plastic and cut out template shapes.

Cutting

Fabrics A through J, cut from each:

(8) Template A orange peel shapes, making sure to align the points of the orange peel shape with the bias grain of the fabric, and the grainline with the straight grain of the fabric. For directional prints, rotate the template 90° for (4) shapes, to keep the print in the correct orientation for the final block

Fabric K, cut:

(13) 3" x WOF; sub-cut
 (160) 3" squares
 (9) 2½" x WOF for binding

Fabric L, cut:

(3) 5" x WOF; sub-cut
 (20) 5" squares

Fabric M, cut:

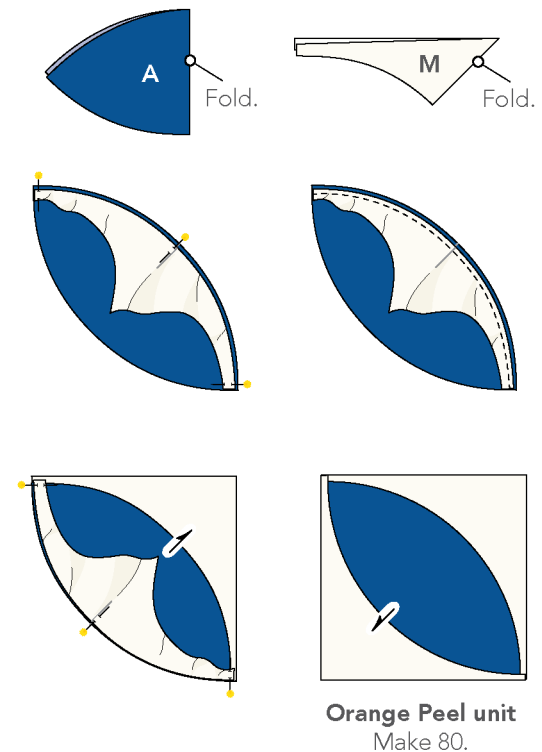
(20) 8½" x WOF; sub-cut
 (160) Template B background shapes, aligning the straight edges of the template with the raw edges of the fabric, and rotating the template for most efficient use of fabric

Sewing

Note: All seam allowances are ¼". Pieces are sewn right sides together. Press seams open unless directed otherwise.

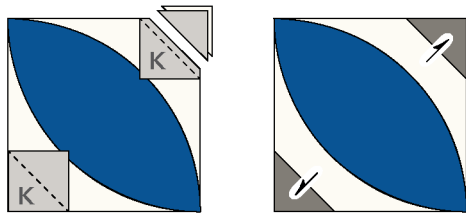
1. Fold (1) **Fabric M** background shape and (1) **Fabric A** orange peel shape wrong sides together. Pinch each shape at the fold along the curved edge to mark the centers. Place the two shapes right sides together, matching and pinning the marked center points. Align the short straight edges of the background shape with the points of the orange peel shape and pin in place. Pin, then sew, the shapes together along the curved edges, making sure the raw edges are even, and taking care not to stretch the fabric (**Fig. 1**). Press the seam allowances toward the background shape. Sew a second **Fabric M** background shape to the remaining curved edge of the orange peel shape to make an Orange Peel Unit. Make 80 Orange Peel units.

Fig. 1



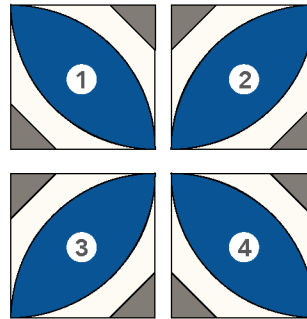
- Draw a diagonal line from corner to corner on the wrong side of each 3" **Fabric K** square. Place marked squares right sides together on the two corners opposite the points of an Orange Peel unit, with the lines oriented as shown (**Fig. 2**). Sew on the line. Trim the excess corner fabric, leaving a $\frac{1}{4}$ " seam allowance. Press toward the corner. Repeat to add two triangle corners to all Orange Peel units.

Fig. 2



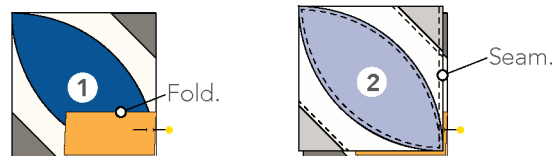
- Group the Orange Peel units in sets of (4) of the same print fabric, choosing and rotating units so that all directional prints are oriented correctly. Working with one set at a time, arrange the units in two rows of two units each, placing the units as they will appear in the finished quilt. For construction purposes, we'll refer to the units as unit 1, 2, 3, and 4, as noted in the (**Fig. 3**).

Fig. 3



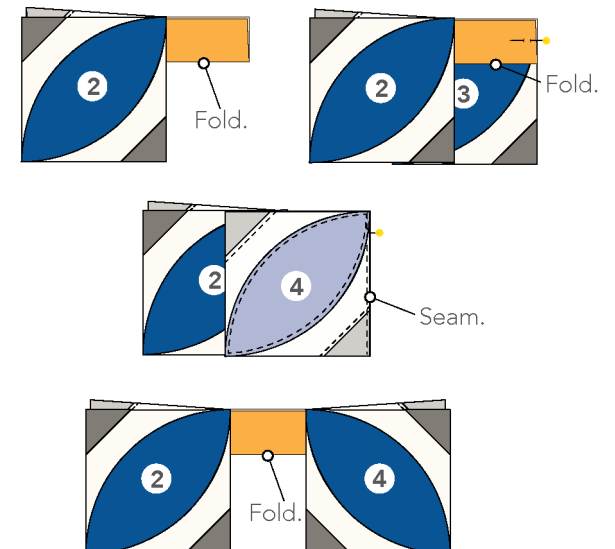
- Fold a **Fabric L** square in half, wrong sides together. Aligning raw edges and with right sides together, pin the folded square to the lower right corner of unit 1 (**Fig. 4**). The square's folded edge should be toward the center of unit 1. Place unit 2 right sides together against unit 1, making sure the Orange Peel points align and sandwiching the folded square in between the two units. Sew the units together along the adjacent edge as shown. Do not press.

Fig. 4



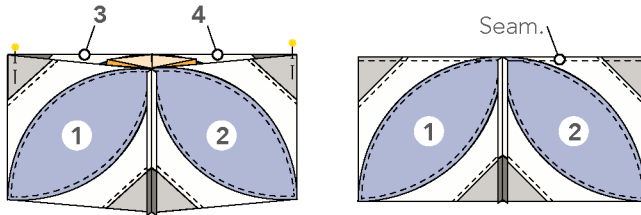
- Fold the joined units 1 and 2 wrong sides together along the seam, so that the folded square extends out from the units. Aligning raw edges and with right sides together, pin the unsewn short end of the folded square to the upper right corner of unit 3 (**Fig. 5**). The square's folded edge should be toward the center of unit 3. Place unit 4 right sides together against unit 3, making sure the Orange Peel points align and sandwiching the folded square in between the two units. Sew the units together along the adjacent edge as shown – the short ends of the folded square will be captured in the seams between units $\frac{1}{2}$ and units $\frac{3}{4}$.

Fig. 5



6. Aligning the raw edges, place units $\frac{1}{2}$ and units $\frac{3}{4}$ right sides together. Pull the folded square open so that the square's raw edges align with the raw edges of units 1 and 3 and 2 and 4. Finger press the seam allowances in opposite directions so that the seams will nest together, if desired. Pin, then sew the paired units together, sandwiching the squares raw edges between the units (**Fig. 6**).

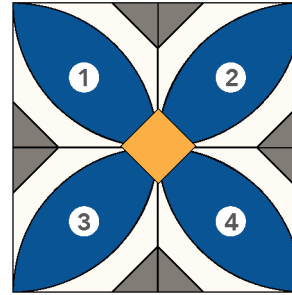
Fig. 6



TIP: View a video tutorial on this step online at: <https://youtu.be/GXe820IXZDY>

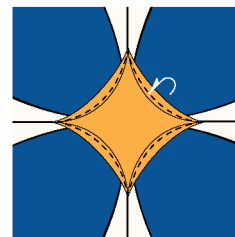
7. On the wrong side of the block, finger press the first two seam allowances at the block center, removing a few stitches if necessary, so that the seam allowances 'swirl' and lie flat at the center point. Press the seam allowances only at the outer edges of the block. Do not press the block center or the sandwiched square. The square will flatten into an on-point square in the center of the block (**Fig. 7**).

Fig. 7



8. Finger press the folded edges of the on-point square, gently rolling the sides of the square toward the center, to make a soft curve. Pin, then topstitch along the curved edges to secure the curves in place. Press. If necessary, trim and square the block to $16\frac{1}{2}$ " square. Make a total of (20) blocks. (**Fig. 8**)

Fig. 8



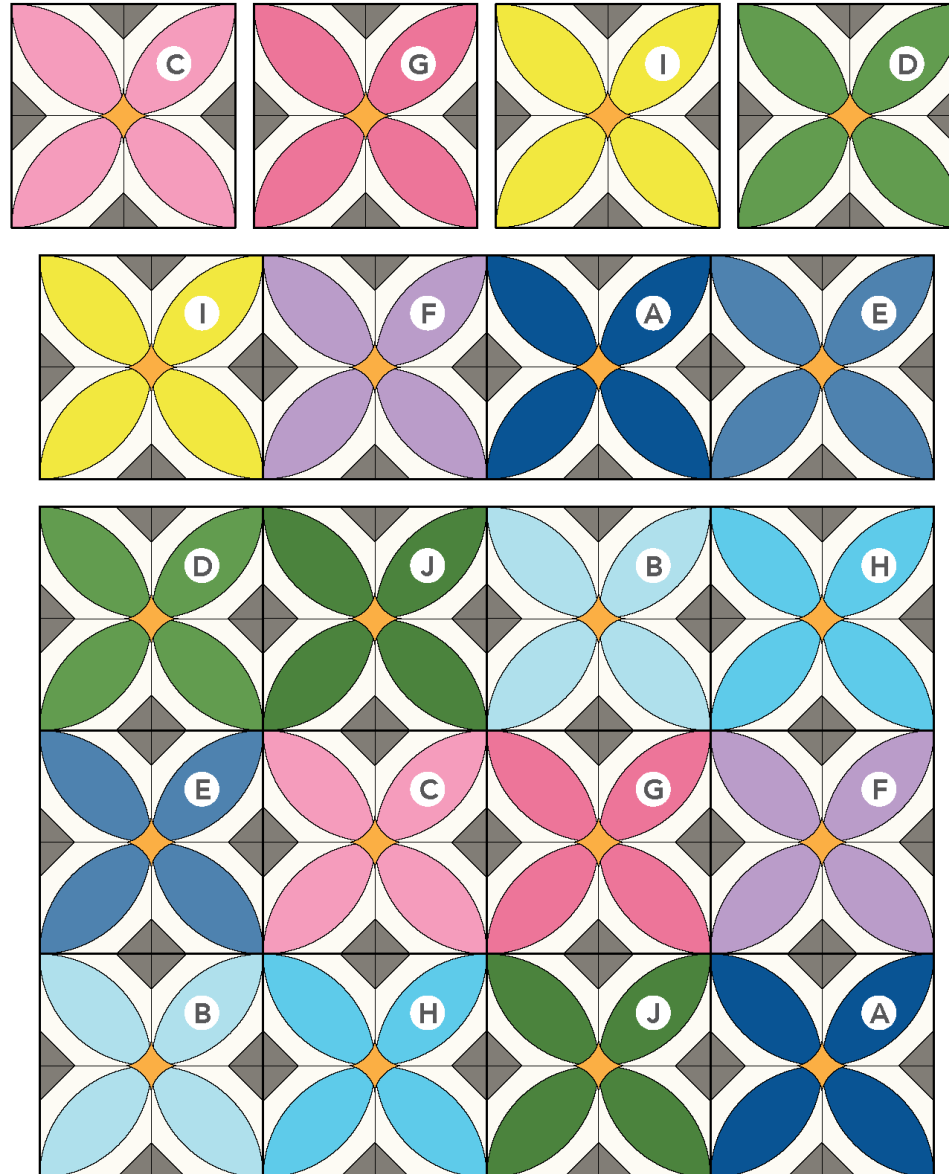
Top Assembly

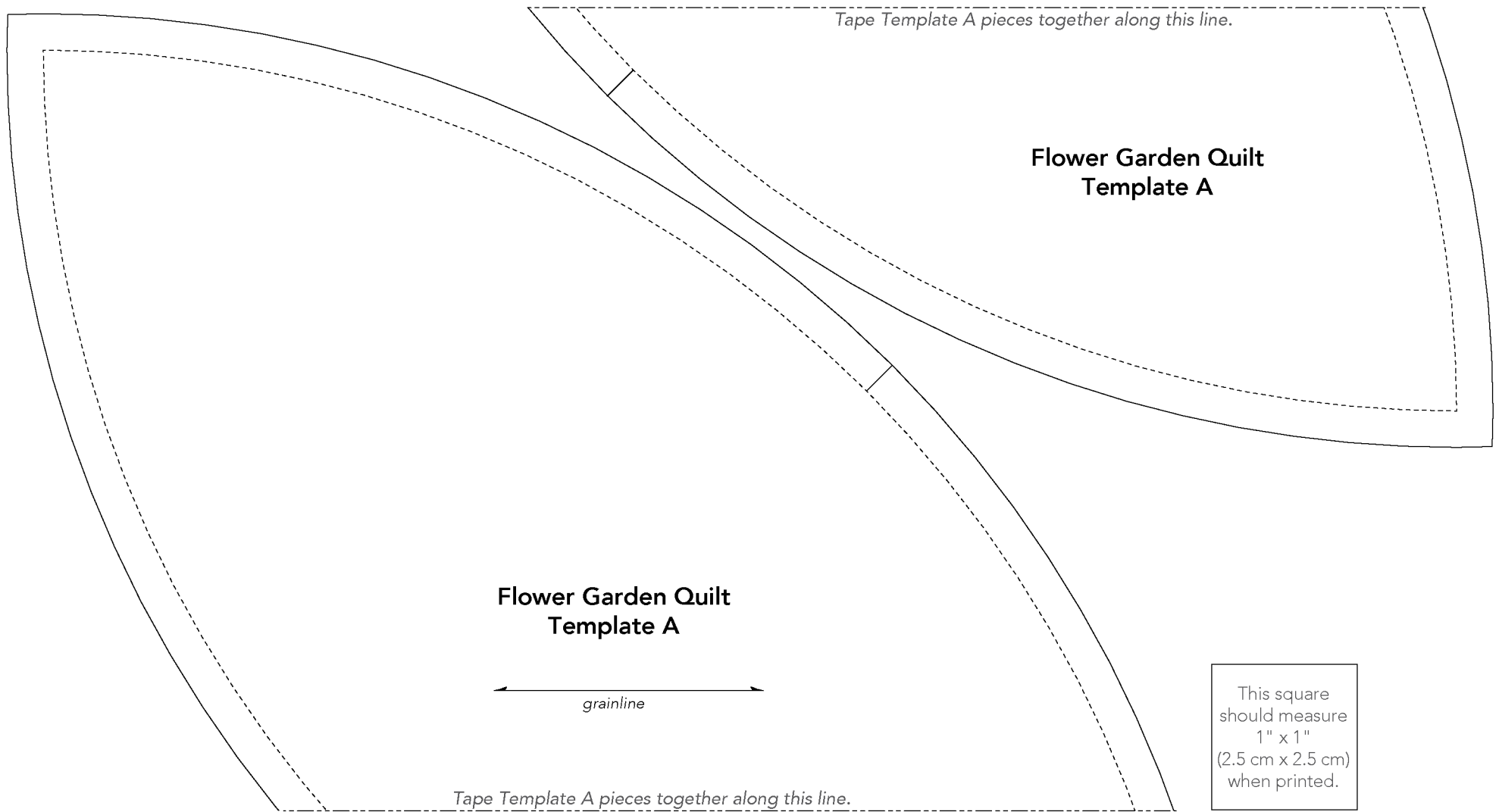
9. Referring to the **Quilt Layout** diagram on page 6 for fabric placement, arrange the blocks in (5) rows of (4) blocks each. Sew the blocks in each row together along adjacent edges. Press. Sew the rows together along adjacent edges. Press.

Finishing

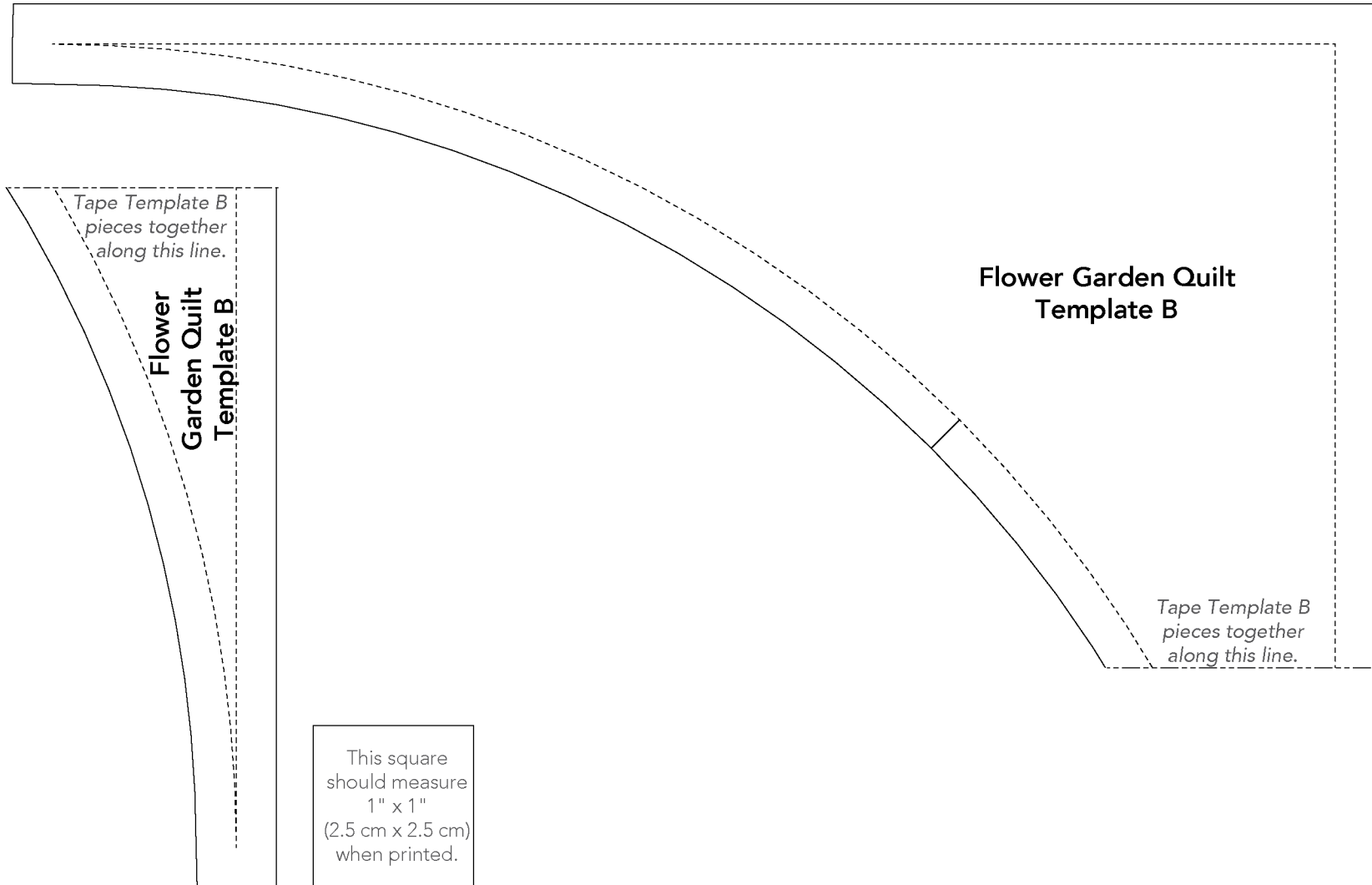
10. Sew together the $2\frac{1}{2}$ " x WOF **Fabric K** binding strips end to end using diagonal seams. Press the seams open. Press the binding strip in half wrong sides together.
11. Layer the backing (wrong side up), batting, and quilt top (right side up). Baste the layers together and quilt as desired. Trim excess batting and backing even with the quilt top after quilting is completed.
12. Leaving an 8" tail of binding, sew binding to top of quilt through all layers matching all raw edges. Miter corners. Stop approximately 12" from where you started. Lay both loose ends of binding flat along quilt edge. Where these two loose ends meet, fold them back on themselves and press to form a crease. Using this crease as your stitching line, sew the two open ends of the binding together right sides together. Trim seam to $\frac{1}{4}$ " and press open. Finish sewing binding to quilt.
13. Turn the binding to the back of the quilt and hand stitch in place.

Quilt Layout





*** Measure templates before cutting to confirm printing at 100%***



*** Measure templates before cutting to confirm printing at 100%***