

Spring 2009

## Featured Mariposa

### Luna Moth

*Actias luna*

Luna Moths are members of the Saturniidae family, also known as the “Giant Silkworm Moths.”

Luna Moths are huge moths, with a wingspan of four and a half inches. They have a white body, pinkish legs, and huge pale green wings. The hindwings have eyespots and long tails.

They fly, only at night, in Spring and early Summer.

The female Luna Moth lays eggs on the bottom of Black Walnut leaves. She lays about 200 eggs in small groups.

You can tell a male from a female, because males have larger, bushier antennae.

Once the eggs are laid, it takes about 10 days for them to hatch. Caterpillars begin eating as soon as they leave the egg.

They eat leaves from many different trees and shrubs, including: Sweetgum, American Beech, Red Maple, hickories, White Oak, Black Cherry, willows, American Chestnut, and Smooth Sumac. The caterpillars will continue to eat and grow, molting their skins as they grow. They will do this five times over a period of three to four weeks.

When the caterpillar is fully grown, it will be 2 1/2 inches long and ready to become a pupa. It will spin silk from near its mouth and



wrap itself in a leaf. The caterpillar will usually stay in this cocoon for two to three weeks. If it is near winter, the caterpillar will wait until Spring to hatch.

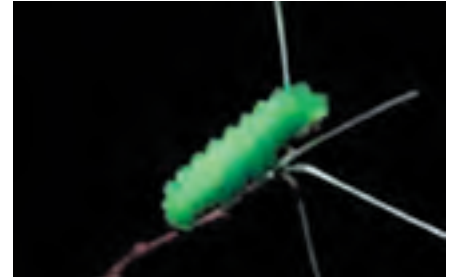
When the adult Luna Moth leaves its cocoon, it is not ready to fly. Its wings are short and stumpy and the insect needs to rest. It usually hatches in mid-morning and climbs a tree trunk to hang its wings, so they can fill with blood. Once the wings are inflated, the adult moth will wait until nightfall to fly off to find a mate.

Adult Luna Moths don't eat; in fact, they don't even have a mouth. They only live for about a week, and their only purpose is to mate.

Female Luna Moths release a chemical at night which attracts males. Adults die shortly after mating or laying eggs. Usually, two generations are born each year (that means that moths that spent the winter in a cocoon will hatch, mate, and lay eggs; then their children will hatch, mate, and lay eggs which will hatch and make cocoons for the Winter).

Luna Moths were once very common, but are now considered an endangered species in some areas.

Luna Moths were once very common, but are now considered an endangered species in some areas.



Sweet Gum



Persimmon

# Featured Plant

## *Duranta erecta*



### Go For the Gold

A wonderful tropical plant that is becoming increasingly popular in butterfly gardens is *Duranta erecta*. *Duranta* is in the verbena family and is native to the West Indies, Central and South America. This plant has several common names including Brazilian sky flower (for its beautiful blue-white flowers), pigeon berry and golden dewdrop because the berries produced are a beautiful yellow color.

The flowers develop on new growth in up to six-inch long racemes. It flowers from spring until frost. The ½ inch diameter berries or drupes ripen in late summer-fall and are a golden yellow color. Fruits are listed as poisonous.

Durantas are robust plants. They frequently will grow to about 5 feet wide and tall but may reach heights of 15 feet in warmer climates. Be sure to allow this plant enough room when you add it to your garden. A sunny location is perfect.

Although this is considered a tropical plant, it is hardy down to temperatures in the teens. While it may freeze down, it typically will return from its roots. In warmer growing zones, Durantas will actually grow into large shrubs or small trees.

Durantas are easy to grow and require little care. They do tend to sprawl and will need regular thinning and pruning to keep under control. They are only moderately drought tolerant so may require some supplemental irrigation.

Remember that nectar-rich, colorful flowering plants are the backbone of any successful butterfly garden. They draw in adult butterflies from the surrounding environment like a magnet while adding beauty and interest to the landscape. Therefore, adult nectar sources should always be the first additions to a new butterfly garden.

We've had a *Duranta* planted at the Panhandle Butterfly House for years. It is a great nectar plant for many different types of butterflies. However, I have noticed that long-tailed skippers are particularly fond of this plant.

Theresa Friday

# You're Invited !!

The Panhandle Butterfly House will open for its 12<sup>th</sup> season on Friday, April 17, 2009. Located in Navarre Park on Highway 98, the Panhandle Butterfly House is an integral part of the Navarre Nature Walk in Navarre, Florida.

An opening ceremony is scheduled for 10 a.m. on April 17. "We would like to invite the public to join the festivities," said Theresa Friday, Santa Rosa County Extension Agent. "We have several fun events planned for the public in addition to opening the vivarium, or butterfly sanctuary, for the season."

Events planned for opening day include a butterfly release inside the vivarium. "This is an opportunity for kids of all ages to see a butterfly up close and then gently release it in its new home," Friday said.

The Panhandle Butterfly House exhibits only Florida native butterflies. "We want to show our visitors and teach the kids about the butterflies and caterpillars they are most likely to see in their own backyard," she said.

In addition to the butterfly release, the Panhandle Butterfly House will be having a plant sale. The sale will include different types of nectar and host plants including milkweed, parsley, dill and fennel. "It's a great time to buy plants, help a good cause and start a butterfly garden," Friday said. "This large educational exhibit is possible only through grants and donations made by individuals, organizations and businesses."

The Panhandle Butterfly House will be open from April 17 until Labor Day. Hours are Thursday, Friday and Saturday from 10 a.m. to 3 p.m. and on Sundays from noon to 4 p.m.

**Web Page!!**  
[www.panhandlebutterflyhouse.org](http://www.panhandlebutterflyhouse.org)  
Now donate with Pay-Pal!!

## Quilting Friends of Navarre Donate Quilts

The Panhandle Butterfly House was the recipient of two beautiful quilts made by the "Quilting Friends of Navarre". This group, of about a dozen local ladies, is an informal charity-minded quilting club.

Kathy Weathers, Shirlee Carter and Lynda Richardson made the presentation on September 29, 2008.

The queen size quilt was designed by a local quilt shop "Toad-u-sew". This beautiful quilt mimics the lattice work in the butterfly vivarium and is named "Reflection." The lap quilt made of vibrant colors is enhanced by butterflies and humming birds and is named "Kaleidoscope". The quilts were machine quilted by Asta Dorsett.

The quilts will be made available through an opportunity drawing to be held April 16, 2009. Ticket cost: \$1 each or 6 tickets for \$5.00. For more information call 850 939 9595 or email

[fundraiser@panhandlebutterflyhouse.org](mailto:fundraiser@panhandlebutterflyhouse.org).



Shirlee Carter, Lynda Robinson,  
Kathy Weathers



Shirlee Carter, Kathy Weathers,  
Lynda Robinson

# Volunteer Spotlight

## *Boots Clutter and Mitzi Emmons*

All Panhandle Butterfly House volunteers are extraordinary but few can proclaim the longevity of Docents (Greeter Guides) Isabel (Boots) Clutter, Mitzi Emmons, and Wauneta Stevens.

In 1997 Jack Wetherell, founder of the Panhandle Butterfly House, searched for knowledgeable volunteers to educate the public on butterflies, habitat conservation and ecosystem management. He didn't have to look very far. Fellow Gulf Breeze Garden Club members Boots, Mitzi and Wauneta were the first to step up. Since 1997 these ladies have volunteered one day a week for the past 11 years. Wauneta passed away in 2005.

It took a lot of fortitude, and planning to volunteer at the butterfly house in 1997. The reception area was the outdoors - equipped with a picnic table, umbrella and two chairs. No restroom. Boots is quoted as saying "The only air was from swinging on the swing."

One can only fathom the thousand of visitors they have educated over the years. These ladies are truly remarkable! Thank you for your knowledge, support and dedication!



Isabelle (Boots) Clutter



Mitzi Emmons

# Plan a Group Field Trip

Does your class, club, scout troop, day care group or Mom's and Tots group need an outing? Come visit us at the Panhandle Butterfly House! Not only will you enjoy nature's wonder and beauty, but also you can learn how to recreate it in your own garden!

The Tour Guides are anticipating another booming year. In 2008, 1292 children and 312 adults became graduates of "Kiderpillar" School! The touring team is comprised of both community volunteers and UF/IFAS Florida Master Gardeners, all of whom we hope will be returning this year. A couple of changes to last year's team have occurred. Jere Wright, who has contributed a great amount of time and knowledge to the PBH, is moving this Spring and her support will be missed. Kay Zilka will be the co-chair for Tour Guides. The Guides hope to increase their staff through Spring docent and tour training to be able to manage the increasing number of visitors. Last year several public and private schools were able to take the tour, and we are hoping that this happens again this year. Our curriculum meets the Sunshine State Standards for Florida.

Reservations are now being taken for both adult and children's tours which will begin Monday April 20. Prescheduled tours will be available Monday through Wednesday during our open season. Thursday through Sunday, the House is open to the general public. The tour consists of a basic lesson on butterfly conservation, the life cycle and habits of the butterfly and is followed by a journey through the vivarium, where they will see live Florida butterflies, their nectar and host plants and the nursery featuring caterpillars in metamorphosis. To schedule a tour, go to our Website, <http://panhandlebutterflyhouse.org/> and click the page "Come See Us" and then click the link saying "Contact Us" to write an email requesting a tour. The Panhandle Butterfly House is one of the few, if not the only one in the United States that is supported entirely by donations and manned by volunteers. Donations are appreciated and a \$1 minimum per person is recommended. We are looking forward to your visit!

Contact us early to be sure of availability!



## Recent Donations

Goldmine Bingo  
 The Jelks Family Foundation, Inc.  
 Helen Chilton  
 Gulf Breeze Garden Club

### Wish List

20 Large bags of Jungle Growth

Daylily & Citrus fertilizers

Osmocote & Liquid Miracle  
 Grow Fertilizers

2 Weed-B-Gone

4 Large Roundup containers

6 Rodent Control pellets for Rats

1 large Amdro container

2 Milgorinite bags

22 Bags of Pine Nuggets @  
 \$2.78

11 Bags of LARGE Pine Nuggets  
 Coco Fiber 14" for hanging baskets  
 Small Animal Trap 16 x 6 x 6 3/8 at



## Join the Kaleidoscope Society

A group of butterflies is called a kaleidoscope. The Kaleidoscope Society is made up of individuals wishing to support the Panhandle Butterfly House.

Through donations from generous people like you, the PBH is able to buy butterflies each week, have operating funds, and pay for important maintenance of the building and grounds.

Donations are fully tax-deductible, and you can be assured that 100 percent of your gifts will be used exclusively to benefit the PBH.

Please select your level of membership from one of the eight categories below, and send cash or check to

Panhandle Butterfly House  
 PO Box 5208  
 Navarre FL 32566



## How Can You Help

The best way for you to help the Panhandle Butterfly House is to support our fundraising events by joining our Kaleidoscope Society.

We are a non-profit 501c3 organization that relies on and receives 100% of your donation. 100% of each donation is tax deductible.

To join the Kaleidoscope Society, check the desired level of membership entitling you to receive newsletters and special mailings.

- Skipper \$10
- Buckeye \$25
- Swallowtail \$50
- Gulf Fritillary \$100
- Painted Lady \$250
- Viceroy \$500
- Zebra Longwing \$1000
- Monarch \$1500

Name: \_\_\_\_\_  
 Address: \_\_\_\_\_  
 City: \_\_\_\_\_ State: \_\_\_\_\_  
 Zip: \_\_\_\_\_ Phone: \_\_\_\_\_  
 Email address \_\_\_\_\_

Please make checks payable to:  
 Panhandle Butterfly House  
 PO Box 5208  
 Navarre, FL. 32566

**Donations can also be made using PayPal on our website  
[www.panhandlebutterflyhouse.org](http://www.panhandlebutterflyhouse.org)**

## BE A BUTTERFLY BUDDY !!

The PBH is creating a new program to encourage businesses, community organizations and individuals to donate toward purchase of butterflies this year.

The Butterfly Buddy program asks for donations of \$325 to sponsor an entire week's worth of butterflies, which are shipped weekly from Gainesville. For the donation, contributors will have their names placed on a sign outside the butterfly house as well as inside. A certificate will be presented and a press release sent to the media. They and up to 12 guests will be invited to help release butterflies in their sponsored week

Other donations are also encouraged, with a minimum of \$100 from businesses and organizations and \$50 from individuals. Names of those donors will be placed on the signs. There is a weekly release during visitor hours. Contributors can sponsor more than one week of butterflies. All donations are fully tax-deductible.

Butterfly Buddy will receive donations by check at Panhandle Butterfly House, PO Box 5208, Navarre FL 32566, or by credit card at [www.panhandlebutterflyhouse.org](http://www.panhandlebutterflyhouse.org).

### Thanks to the 2008 Tour Guides

Edith Blankenship    Claire Bagn    PJ Danneker    Patricia Fandt  
Mary Gallerein    Fran Grissom    Shirley Hibbard    Sue Hufstader  
Jacque Larson    Sherri Marusich    Casey and Courtney Metzger  
Mary Peterzen    Art Parrish    Shanna Sasser    Meta Selzer  
Katie Tankersley    Jere Wright    Kay Zilka    Cathy Hennessy, photographer

When pond ecology was taught, Nita Ellithorpe, Frank Larson and Nelda Seever joined the team. During Monarch Fest, Joanne Conner, Cathy Hennessey and Lorraine Hubbard helped teach. Sandee Ward was our team organizer.

### Thanks to the 2008 Daily Docents

Eleanor Aspliden    Judith Begue    Blair and Jeanne Blage    Julia Boulware    Bill and Karen Broughton,  
Patricia Fandt    Margaret Raser    Andy and Isabel Fraysse    Fran Grissom    Shirley Hibbard  
Lorraine Hubbard    Lunette Kovatch    Jytte Fawzy    Kim Nusbaum    Frank Paine    Mary Peterzen  
Irene Stock Portt    Robert Parrish    Jeanne Reasoner    Pat Schlan,    Bette Schult    Carol Tanksley  
Penny Smith,    Meta Seltze    , Cliffogene Stillwell    Mitzie Wentworth    Marion Wood.



# Butterfly House Planting Day

Tuesday, March 17 found over 20 volunteers happily planting hundreds of new plants in the gardens and vivarium. Flowers are everywhere as were the smiles of all who helped.



Carol Morgan



Theresa Friday



Cliffogene Stillwell



Fran Grissom

## Become a Panhandle Butterfly House Docent!

Join our team of docents at the Panhandle Butterfly House in Navarre. Docents are trained volunteers who act as ambassadors for our natural world. They contribute by educating and helping visitors of the Butterfly House gain a better understanding of butterflies and of the natural habitat in which butterflies thrive.

As a docent, you greet the public, provide casual interpretations, and answer questions. You will have an opportunity to make a valuable and enriching contribution to the community. Schedules are very flexible. Volunteer 1 day a week or 1 day a month!

To prepare you to be successful, you are required to attend a training course. After completing the training course, you will be prepared with the tools and knowledge. Class size is limited to ensure that we can provide individual attention and training.

- Select one of the following class times
  - March 31 2-4:30 PM, OR
  - April 20 10-12:30 PM, OR
  - May 18 1-3:30 PM
- All classes will be held at the Navarre Chamber of Commerce and the Panhandle Butterfly House located at 8543 Navarre Parkway, Navarre, Florida.

To volunteer and register for a class or to request more information about becoming a docent, please email: [docents@panhandlebutterflyhouse.org](mailto:docents@panhandlebutterflyhouse.org)

The Butterfly House is open to the public Thursday-Sunday, April 17<sup>th</sup> to September 6<sup>th</sup> 2009. For more information about the Panhandle Butterfly House, please visit our website: <http://www.panhandlebutterflyhouse.org/>

## *New Plants in the Garden*

*Jude Groninger, one of our plant experts and garden designer, has introduced several new plants in the garden this year.*



Geranium Rozanne



Little Lemon Solidago



Color Wheel Stokesia



Summer Sky Echinacea



Fanfare Gaillardia



*Opening Day Friday April 17*

*[www.panhandlebutterflyhouse.org](http://www.panhandlebutterflyhouse.org)*

Panhandle Butterfly House  
PO Box 5208  
Navarre, FL. 32566