

# FACILITIES NEWS

## A NOTE OF THANKS

### INSIDE THIS ISSUE:

■ STEPHEN ROBERT '62 CAMPUS CENTER OPENS	1
■ KEEPING BROWN COOL	2
■ ART ON CAMPUS	3
■ GROUNDBREAKING FOR ATHLETIC COMPLEX PROJECT	4
■ PHASE II, BROWN-TO-BROWN	4
■ ENERGY EFFICIENCY	5
■ TECH TIP—GMAIL	5
■ BROWN LIGHTS UP HARVARD	6
■ EVENT & CONF. SERVICES	6
■ LADD OBSERVATORY	7
■ PRUNING NEWTON'S APPLE TREE—GROUNDS AT WORK	7
■ REMINDERS	8
■ SAVE THE DATE—FLU CLINIC, HOLIDAY PIE/FOOD DRIVE KICK OFF, TAILGATE, AND MORE!	

Thank you for all the work that was accomplished over the past few months—the University celebrated another successful commencement, University event and conference service offices were consolidated, more than 60 projects were completed over the summer, the Stephen Robert '62 Campus Center was dedicated, there was a groundbreaking for the athletic complex project, and so much more! This issue of *Facilities News* highlights these undertakings and more.

Whether reading the article about the Ladd Observatory transit room or the grounds article, the articles in this edition provide a sense of what it

takes to maintain and enhance our historic campus.

In addition to maintenance, renovation, and construction projects, under the energy efficiency investment program, there are more than 156 energy-related projects of various size and scope either completed, in progress, or under development. Read the full report at [Sustainability Progress Report](#).


If you haven't heard about the effort underway to develop a department vision statement and values and beliefs, I encourage you to speak to your supervisor or manager. Look for more news on this effort in

the coming months.

With the flu season here, don't forget to get your flu shot. There will be several clinics around campus including one at 295 Lloyd Avenue on October 14th.

Lastly, with the academic year underway and the holidays right around the corner, I look forward to seeing you all at our department events over the next few months. Check out the *Save the Dates* on the last page.

Sincerely,



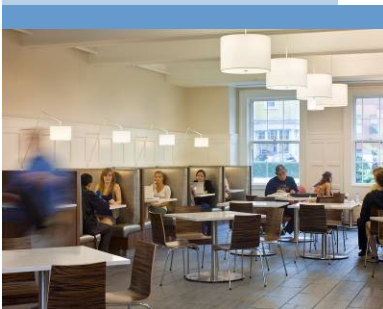
Vice President  
Facilities Management

## STEPHEN ROBERT '62 CAMPUS CENTER OPENS

The Stephen Robert '62 Campus Center in Faunce House was dedicated during a ceremony on Friday, Oct. 1, 2010. After a \$20-million renovation, the 1904 building now features a glass archway leading to a visitor's center, expanded dining facilities, and new areas for students to gather, study, and socialize.

Renovation for the center began in summer 2009 and was

completed in August 2010. The project directly supported over 155 temporary jobs in Rhode Island in construction and related industries, according to an independent analysis by Appleseed Inc. of New York.



The photos on this page are from the new Stephen Robert '62 Campus Center. Stop by and see it for yourself.



## KEEPING BROWN COOL

How does Brown maintain its cool? Not only is this an important question to a style-conscious, prospective student but also one that occupies many of us in Facilities. Our preoccupation with “coolness” is making sure students, faculty, and staff have a comfortable environment and researchers have the necessary environmental conditions in their labs and animal care facilities.

Most buildings on campus have some type of cooling system, which range from window air conditioners in small buildings to ducted systems served by centralized units to “chilled water” systems that cool entire areas of the campus. Facilities’ trade staff—HVAC, controls, and second shift—along with the engineering staff devote a great deal of time and energy to the maintenance, operation, and troubleshooting of our campus cooling systems.

Prior to 15 years ago, our campus buildings generally had their own dedicated cooling systems. As the science and research facilities began to grow and, later, as Brown began to replace its aging underground utilities, underground chilled-water piping was installed to connect not only these buildings but also large academic and administrative buildings that were in the vicinity of the new piping network. In order to provide cooling from a central location, we must use cold or “chilled” water as the medium. Ordinary water is chilled to about 42 degrees Fahrenheit and sent out through insulated pipe to various buildings where it is pumped through coils; these are installed in cabinet-style boxes in small offices and also in large air-moving units, which serve larger buildings. Air returned from the building, often mixed with outside air to provide ventilation, is blown across the cooling coils and then delivered to the room. The returning chilled water, having picked up the heat from the coils in the buildings, is approximately 52 degrees Fahrenheit. This water is sent back through the “chiller”, a large device which generates cooling by circulating

refrigerant in a gas and liquid phase (think of a giant window air conditioner).

Right now, we have three central chilled water systems, or loops, on campus—MacMillan, Rockefeller, and J. Walter Wilson. The MacMillan system includes MacMillan Hall, Sciences Library, Watson/CIT, and Geo-Chem, along with smaller buildings in the area. The Rockefeller system includes Rockefeller Library and eight other buildings on the west campus. The J. Walter Wilson loop is now the largest one and is interconnected not only with LSB/Bio Med and the Pembroke Campus, but it also extends south to pick up the Stephen Robert ‘62 Campus Center and Lyman Hall, and will soon include the new Metcalf renovation buildings. The J. Walter Wilson plant will eventually have a capacity of 3,000 tons of cooling; and the entire loop, including the LSB chillers, will have over 5,000 tons of capacity. *(One ton, in refrigeration lingo, is a cooling capacity equal to that of a large window air conditioner, for comparison.)*

Since generating all this cooling is expensive, from an electrical standpoint, Brown has implemented strategies when outside temperature and humidity conditions are right to exchange the heat picked up by the chilled water directly with outside air. This enables us to shut off the electric chillers and just run our cooling towers and pumps.

Soon we will have a fourth central chilled-water system on campus, which will be located in the Central Heat Plant. The new chiller will serve the athletic complex’s newest facility once it is completed—Katherine Moran Coleman Aquatics Center, the Nelson Fitness Center, and the David J. Zucconi ’55 Varsity Strength and Conditioning Center—and the Olney-Margolies Athletic Center (OMAC).

Now, it’s time to switch to the heating season!

Speaking of cool, check out the ‘skin’ of the new Perry and Marty Granoff Center for the Creative Arts



**ART ON CAMPUS**



a donkey in a boat, which was installed on the Thayer Street facade of the University's Sciences Library. The most recent loan, an 87 x 127 x 78 inch stainless steel sculpture by Arthur Carter,

Since its inception in the fall of 2002, the "Art on Campus Program," inaugurated by the Public Art Committee has facilitated long-term loans of significant works for installation at public sites around campus.

A subcommittee of the Corporation Committee on Facilities and Design, the Public Art Committee (PAC) has brought world-class works by internationally recognized artists to campus. Examples include Isamu Noguchi's 10-foot stone sculpture "To Tallness" and Paola Pivi's popular and playful photograph of

a 1953 alumnus, was installed on the Main Green in August and will remain on view through the summer of 2013.

The PAC also oversees the University's Percent-for-Art program, which designates one percentage of construction budgets for the purchase or commission of art. The first commission, completed in 2006, is Diane Samuel's

multilayered glass installation, which adorns the pedestrian bridge of the Sidney E. Frank Hall for Life Sciences building. Recently completed was Ann Hamilton's "ground," a carpet (on the third floor of Pembroke Hall) that graphically represents speaking and listening. Currently underway are a sound work by alumna Nina Katchadorian, untitled *Advice from a Former Student*, for the Stephen Robert '62 Campus Center.



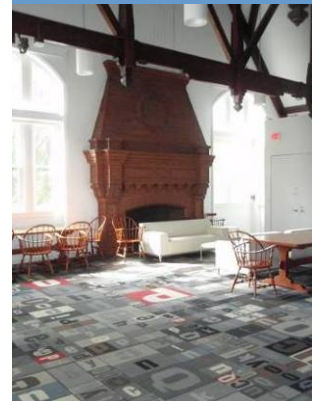
**GROUND BREAKING FOR ATHLETIC COMPLEX PROJECT**

A major new addition to the athletic complex, including the Katherine Moran Coleman Aquatics Center, the Nelson Fitness Center, the David J. Zucconi '55 Varsity Strength and Conditioning Center, and the Ittleson Quadrangle, is now underway. The project, to be built on and near the site of the former Smith Swim Center on Hope Street, is scheduled to open in March 2012. [Click here to view the webcam](http://128.148.72.180/view/viewer_index.shtml?id=5461) or go to [http://128.148.72.180/view/viewer\\_index.shtml?id=5461](http://128.148.72.180/view/viewer_index.shtml?id=5461)



Credit: Michael McCann for Robert A.M. Stern Architects

**PUBLIC ART**



Ann Hamilton's "ground"—Pembroke Hall



Isamu Noguchi's "To Tallness"—The College Green



Paola Pivi's photograph of a donkey in a boat—Sciences Library

## PHASE II OF BROWN TO BROWN

The Brown to Brown Home Ownership Program is now entering Phase II after successfully selling all four homes that were part of Phase I. The program provides eligible faculty and staff members the opportunity to purchase certain Brown-owned residential properties. The Brown to Brown program enhances the University's mission by helping support the attraction and retention of faculty and staff by providing the opportunity for housing close to campus in an attractive neighborhood. The University, the City of Providence, and the University's College Hill neighbors also benefit from the restoration of these homes, enhancement of the neighborhoods, and return of the properties

to the City's tax base as privately-owned residences.

There are currently four properties that are part of Phase II. The properties will be available after completion of construction for purchase at 80% of fair market value (based upon an appraisal). As part of the program, the University retains the right to repurchase the properties (at 80% of fair market value), should the need arise, for any University purpose, or if the participant wishes to sell, or leaves Brown employment (other than by retirement).

The homes in [Phase II](#) are located at 117 Brown Street, 287 and 291 Brook Street, and 93 Benevolent Street. The Brook Street properties will be converted into five 1-2

bedroom condominium units and 93 Benevolent will be a single-family home. The Brook Street and Benevolent Street properties will share common areas for parking and garden space; renovations are scheduled to start in the fall of 2010. Renovations have already begun at the property located at 117 Brown Street with an estimated completion time of spring 2011. This property is already under contract.

If you would like to learn more about the program, or its eligibility guidelines, please visit the [Brown to Brown Home Ownership Program](#) on Brown University's website.

### PHASE II HOUSES



117 Brown Street



287 Brook Street

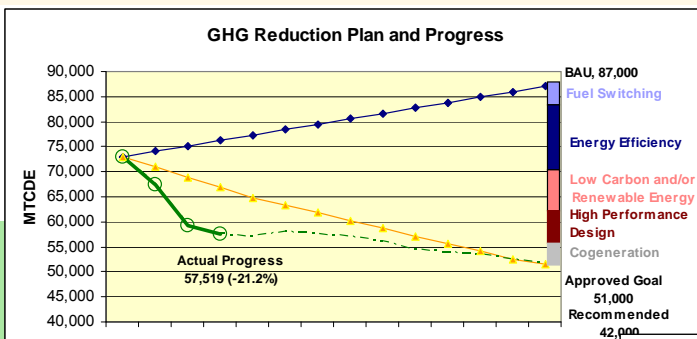


291 Brook Street



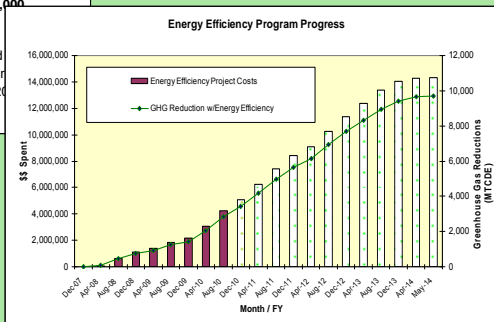
93 Benevolent Street

## ENERGY EFFICIENCY AND GHG REDUCTION PROGRESS



Recommended reduction is based on 15% below 1990 levels, including growth. Approved Goal is based below 2007 for existing buildings, up to 50% better than code for new construction, and up to 30% better acquired buildings. Interim reduction goals are 4% per year from 2008 through 2011, 3% per year from 2019, and 2% in 2020.

To read the full report, please visit [Sustainability Progress Report](#) at [http://www.brown.edu/Facilities/Facilities\\_Management/energy/energy.php](http://www.brown.edu/Facilities/Facilities_Management/energy/energy.php)



**TECH TIP- GOOGLE MAIL**

**Need help?** Email [FM\\_IT\\_Helpdesk@brown.edu](mailto:FM_IT_Helpdesk@brown.edu)

This email account is monitored by several Facilities' Systems & Services staff members, in order to provide you with a prompt response.

**Need help with Google**

Plan to attend a Facilities' staff *Google Apps Q&A Session*:

Where Conference Room A, 295 Lloyd Avenue  
 When: Wednesday, October 20<sup>th</sup>, 9:30 AM to 10:30 AM  
 Thursday, October 21<sup>st</sup>, 12:00 PM to 1:00 PM (bring your lunch)

Sign up with [Montgomery\\_Combs@brown.edu](mailto:Montgomery_Combs@brown.edu). Email your questions and/or topics that you would like to learn about to Monty in advance.

**Did you know** that Google starting rolling out a new feature that will allow you to "un-thread" your conversations? Come to one of the sessions to learn more.

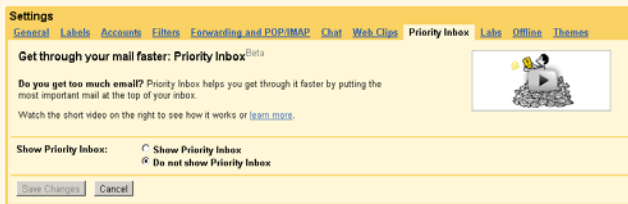
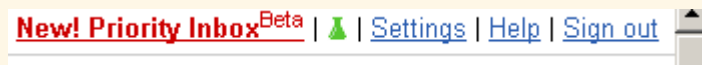
**Conversation View:** (sets whether emails of the same topic are grouped together)

Conversation view on  
 Conversation view off

**Too much mail in your inbox?**

Watch the Google video on "Priority Inbox."

From your inbox click on *New! Priority Inbox* or *Settings* and watch the video.



**MEDICAL EDUCATION BUILDING AT 222 RICHMOND RENDERINGS**



Academy Interior



Auditorium



Public Space



Atrium



**BROWN LIGHTS UP HARVARD, 29-14**

With a near sellout crowd of 17,360, built in 1925, Brown Stadium's first night game was held on September 25th. Temporary lighting was installed for the Homecoming match-up against the Crimson. Four banks of Musco lights illuminated Brown Stadium, with two banks of temporary lights towering above the stadium on either side of the field.

Supporting the event were: (Custodial) L. Eastman, L. Tavares, C. Santiago, Z. Silveira, (Grounds) R. Garvey, S. Lavoie, A. Pereira, and photographed (Electrical) J. Leca, C. J. Murphy, G. Johnson, L. Piacitelli, J. Grzebien, G. Tate, J. Jennings, and U. DeAlmedia



**OFFICE OF UNIVERSITY EVENT AND CONFERENCE SERVICES**

As a result of the recommendation from the University Organization Review Committee, the University Event and Conference Services offices were combined with Facilities' Events Support office in July. The merging of events, conference, and scheduling coordinators and managers along with the hiring of a few new key staff members resulted in a team of 11 staff who are housed on the second floor of 295 Lloyd Avenue in the Office of University Event & Conference Services.

The key role of this new group is to consolidate the event planning process for students, faculty, and staff.

Event requests, which flow into the office through the scheduling coordinator, can be assigned to an event coordinator depending upon the needs of the requestor. The event and conference team work closely with Dining Services, Media Technology Services, Graphic Services, and the Department of Public Safety to coordinate all events.

The goal of combining event planning and support under one roof promotes higher levels of efficiency and support while ensuring event protocols are in compliance with University regulations and standards. The combined ef-

forts will create efficiencies by improving financial management, streamlining procedures, reducing expenses, and ultimately creating new opportunities to generate revenue for the university.

**Did you know...There are over 500 recognized student groups on the Brown campus? Many requests for space and event support come from our creative and active student body in the form of meetings, conferences, concerts and special performances.**

*Check out the new scheduling Space Availability Grid before planning your next meeting or event [www.brown.edu/scheduling](http://www.brown.edu/scheduling)*

*Spotted at Wriston Quad*



*Brown cow helps Grounds trim and weed grass.*

*The Transit Room reopens on October 19th.*

**LADD OBSERVATORY TRANSIT ROOM RENOVATED**

The University recently completed an historic renovation of the [Ladd Observatory's](#) (opened in 1891) *transit room*.

The project, funded in part by the Rhode Island Historical Preservation and Heritage Commission, included work to the building's interior and exterior, restoring both the historical aesthetic as well as the function of the space.

The *transit room* was designed specifically for star transit observation and time keeping. The telescope was used to calibrate the clocks, which would then generate a

telegraph signal that was sent throughout the city. Some recipients of this signals included jewelers, factories and train depots. Moving forward, the

**Ladd Observatory will be open to the public, free of charge, Tuesday evenings starting October 12<sup>th</sup>, from 7:00 pm to 9:00 pm, weather permitting. Please call 401-863-2323 for updated information.**

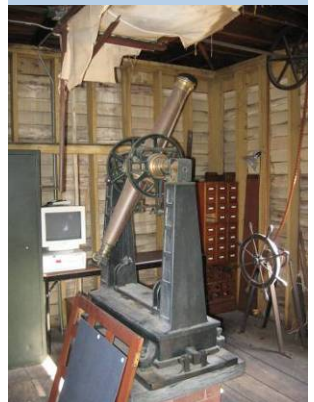
space will be used mainly for education and will also be open to the public.

Function in this space included four roof hatches that are hand cranked open against the counter weight of rope-suspended masonry

blocks that hang in the building's basement. The four windows drop into the wall cavities, thus allowing for contiguous sky observation from two telescopes mounted

in the center of this room. Restoration, of these mechanical moving parts, was a large part of the renovation project. Also included were interior and exterior

wall repair and painting, a new zinc coated roof, joist structure repair, as well as the installation of new wall sconces to resemble the gas-powered lighting once used there.



**PRUNING NEWTON'S APPLE TREE—GROUNDS AT WORK**

The Brown University campus landscape features an extremely diverse collection of plant material. Because of the micro climates created within the proximity of buildings and quads, plants such as Eastern Redbuds normally grown in North Carolina, Sequoias normally grown in California, and Davidia or Dove tree normally grown in the Pacific Northwest are just a few of the unique species being grown on campus. There is something in bloom every month of the year including January and February. The gardens of 84 Prospect ([Rochambeau](#)) are listed in the Smithsonian Institute of National Gardens. The original Brown family home, now the home of the Department of French Studies, was redesigned in the [Olmsted](#) style in 1891 and a must see for anyone interested in unique landscapes. The gardens at 55 Power Street feature a formal rose garden, peony's, vegetable and herb garden.

*Are you aware that Brown maintains an apple tree that (according to a professor who gave it to us) is a direct descendant of the original apple tree Newton sat under when he discovered gravity or that we maintain one of the largest collections of American Elms left in the world.*

Brown's landscape inventory includes 76 acres of campus and high level sports field turf and 6.5 acres of beds full of shrubs, trees, and perennials. Only proper maintenance and care of any landscape can have a positive impact on its appearance. The optimum level of maintenance and the best practices to be used will vary within a given area and certainly from one location to



Brown Stadium

another. Soil condition, pedestrian traffic, intended and un-intended uses, expectations and resources, all help to determine maintenance priorities and regimens. The maintenance schedule can vary—some tasks need to be performed daily, weekly, monthly, or annually. Extreme heat, cold, drought, and excessive rain present numerous maintenance challenges that must be overcome by Facilities' grounds personnel in order to be successful.

In order to accomplish all the necessary work and diverse tasks, the grounds department staff are organized into four subsections—campus landscape, athletic field crew, campus

services, and ice rink—with staff skill and technology levels able to handle a large number of complex tasks and issues. In addition, the staff includes a full-time equipment mechanic to keep the vast amount of complex

equipment in peak condition. Vital equipment, application of chemicals, and irrigation is as sophisticated as any in this part of the country.

The campus landscape crew is split into eight maintenance zones. Each zone encompasses approximately six acres and 22 buildings. Tasks such as daily trash pickup, mowing, pruning, watering, weeding, planting, sweeping, and deicing on campus are performed in this manner. Zone maintenance fosters a sense of ownership, ensures continuity, facilitates supervision of jobs, and allows staff to demonstrate a sustained commitment toward making the grounds a more beautiful place.

Click [here](#) for a map of [Campus Trees and Shrubs](#)\*

\* [http://docs.google.com/viewer?a=v&q=cache:tKIF3EQxUGJ:www.brown.edu/Facilities/Facilities\\_Management/docs/94109\\_BIOMED\\_tree\\_shrub\\_map.pdf+campus+trees+and+shrubs+map&hl=en&gl=us&pid=bl&srcid=ADGEESiWgzedhx4oCUg5NAyvlZ2VEgHb0xC0a7eo0RkJR7kswK3DXmfl.Syzyk\\_EHHL4LrF14bA01PacNGOqrimJ8J8CLErO6NiqcOkmn-\\_sKBhtFv4dlUIBmA60szpCFuMRqNuUaj&sig=AHIEtbQMCPm9o2JLLz7f0PlcOtu3JuUhw](http://docs.google.com/viewer?a=v&q=cache:tKIF3EQxUGJ:www.brown.edu/Facilities/Facilities_Management/docs/94109_BIOMED_tree_shrub_map.pdf+campus+trees+and+shrubs+map&hl=en&gl=us&pid=bl&srcid=ADGEESiWgzedhx4oCUg5NAyvlZ2VEgHb0xC0a7eo0RkJR7kswK3DXmfl.Syzyk_EHHL4LrF14bA01PacNGOqrimJ8J8CLErO6NiqcOkmn-_sKBhtFv4dlUIBmA60szpCFuMRqNuUaj&sig=AHIEtbQMCPm9o2JLLz7f0PlcOtu3JuUhw)

**SIGNATURE LANDSCAPES**



Flowering Dogwoods



Rochambeau Gardens



Eastern Redbud



Acer Palmatum "Bloodgood"



Blooming Crabapples "Malus Floribunda"



Perennial Garden

## REMINDERS

Have a question about your uniforms or safety goggles? Contact Stores Operations at x3-2734.

Continue to submit your Facilities Management suggestions. Suggestion boxes are located at 295 Lloyd and at the various key stations.

## SAVE THE DATE

October 14, Flu Clinic, 7:00 AM to 11:00 AM, 295 Lloyd, 3<sup>RD</sup> Floor, Conference Rm. A

November 20<sup>th</sup>, Facilities Management 6<sup>th</sup> Annual Tailgate Party, Dartmouth vs. Brown

November 23<sup>rd</sup>, Holiday Pie and Food Drive Kick Off

December 22<sup>nd</sup>, Holiday Breakfast

Stewards' Meeting — 1st Wednesday of each month

Labor/Management Meetings — 2nd Wednesday of each month

## HOLIDAYS

October 11<sup>th</sup>, Fall Weekend (Columbus Day)

November 25<sup>th</sup>, Thanksgiving Day, and November 26, Day After Thanksgiving

December 24<sup>th</sup>, Christmas Eve Day

December 27<sup>th</sup>, Christmas Day Holiday

December 28<sup>th</sup> through December 30<sup>th</sup>, Winter Break

December 31<sup>st</sup>, New Years Eve

January 17<sup>th</sup>, Martin Luther King, Jr. Day

## COMINGS & GOINGS

### New Hires

Brown, Joan  
Cruz, Justina

Cusick, Patrick

Demattio, Deborah

DeVona, James

Evora, Elisio

Heaney, Chuck

Macari, Anthony

Monteiro, Magany

Rendina, Gianluca

Richardson, Jessie

Squitierre, Jane

Thorp, Michael

Tiburcio, Beatriz

Ventrice, Deborah

### Promotions

Fontes, Maria

Rose, Henry

Executive Assistant  
Custodian II  
Controls Application Engineer  
Custodian II  
Information Services Technician  
Custodian II  
Custodian II  
Custodian II  
Supervisor, Electrical  
Custodian II  
Custodian II  
Custodian II  
Events Assistant  
Assistant Director, Event and  
Conference Services  
Custodian II  
Project Manager

Custodial Shift Assistant  
Supervisor, Custodial

### Current Openings

Custodial Shift Assistant  
Custodial Shift Assistant  
Custodial Shift Assistant  
Custodial Shift Assistant  
Custodian II  
Custodian II  
Custodian II  
Locksmith  
Manager, HVAC and Controls  
Service Response Coordinator  
Service Response Coordinator  
Service Response Coordinator  
Stationary Engineer Mechanic  
Stationary Engineer Operator  
Stationary Engineer Operator  
Supervisor, Controls  
Supervisor, Plumbing  
Water Treatment Technician

### Offices:

- Custodial
- Engineering
- Events & Conference Services
- Finance
- Human Resources and Labor Relations
- Maintenance Services
- Planning Design & Construction
- Service Response Center
- Stores Operations
- Systems and Services
- Real Estate

**Newsletter Team:** Donna Butler, Jim DeVona, Trisha Duff, Peter Fox, Lichen Grewer, Ginger Gritzko, Mike Lopes, Tracy Mansour, Amy Morton, Paula Penelton, Victor Rebelo

**Contributors:** Julie Halloworth, Seth Izzi, Pat Vetere, Jack Wilcox

*Photo from the new Stephen Robert '62 Campus Center.*

## CONTRIBUTING TO THE NEWSLETTER

This edition of *Facilities News* includes information regarding many of our efforts underway. It has been written to provide all Facilities Management employees with information regarding Department activities across the various offices. If you have any suggestions for articles or would like to contribute to *Facilities News* please contact [FM\\_Newsletter@Brown.edu](mailto:FM_Newsletter@Brown.edu).