

# *fast lane*e

*... training from the experts*



# 2016

FAST LANE > TRAINING FROM THE EXPERTS  
Fast Lane Institute for Knowledge Transfer GmbH  
Modocenterstraße 14/B4 > 1030 Vienna  
Tel +43 1 7079538-0 > Fax +43 1 7079538-20  
Info\_at@flane.com > [www.flane.com](http://www.flane.com)

Errors as well as literal and phrase mistakes excepted. All prices are exclusive of value added tax. Gender neutral wording – The content of this brochure is addressed to males and females equally.



## **Celebrating 20 years Fast Lane!**

Who would have thought 20 years ago, that a small Dubai start-up would make it to be one of the world's leading network training providers? The history of Fast Lane's development is an entrepreneur's dream come true: Founded in 1996, Fast Lane was not only known as the Middle East's first CISCO certified training provider, but also was a leading adapter to the internet revolution. In fact, Fast Lane installed the first Internet Node in Yemen for TeleYemen, bringing the new technology to developing countries.

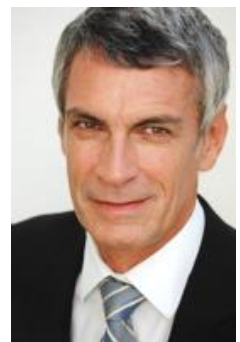
Today, Fast Lane has grown conceptually and geographically: We provide outstanding network training services for major vendors worldwide, like Cisco, NetApp, Aruba to name a few. In addition to early beginnings in Dubai, you will now find our training locations in over 40 countries, with regional head offices in Vienna, Sydney, South Africa and Singapore.

Despite these developments and success stories our key values never changed. Staying humble, listening to our customer's needs and doing our best to exceed your expectations in every project we undertake, is what drives us. The reason for this philosophy is simple: Fast Lane would not be where it is today without its customers and business partners. We are where we are because of you. For your loyalty and trust in our expertise, we would genuinely like to thank you!

The capability to adapt to changes and the focus on always staying up-to-date helped us growing in the last 20 years. With a look at the future, our goal is to uphold our status as the foremost provider of network training and consulting on international level. Investing in our know-how, our quality management system and staying flexible in a fast changing industry and world are just some elements that will help us turning this vision into reality.

We look forward to the next 20 years.

Yours sincerely  
Josef Miskulnig



1996 - 2016

*... quality training from the experts*

---

# fast lane

... training from the experts



# 2016

FAST LANE > TRAINING FROM THE EXPERTS  
Fast Lane Institute for Knowledge Transfer GmbH  
Modocenterstraße 14/B4 > 1030 Vienna  
Tel +43 | 7079538-0 > Fax +43 | 7079538-20  
Info\_at@flane.com > [www.flane.com](http://www.flane.com)

Errors as well as literal and phrase mistakes excepted. All prices are exclusive of value added tax. Gender neutral wording – The content of this brochure is addressed to males and females equally.



Learning  
Specialized  
Partner



## CISCO CAREER CERTIFICATIONS

Borderless Networks Solutions	Entry-Level	Associate	Professional	Expert
<b>Routing &amp; Switching</b>	<b>CCENT</b>	<b>CCNA Routing and Switching</b>	<b>CCNP</b>	<b>CCIE Routing &amp; Switching</b>
	ICND1 100-105	ICND2 200-105 or CCNA 200-125	ROUTE 300-101 SWITCH 300-115 TSHOOT 300-135	Written 400-101 & Lab Exam
<b>Design</b>	<b>CCENT</b>	<b>CCDA</b>	<b>CCDP</b>	<b>CCDE</b>
	ICND1 100-105	DESGN 200-310	ROUTE 300-101 SWITCH 300-115 ARCH 300-320	Written 352-001 & Lab Exam
<b>Network Security</b>	<b>CCENT</b>	<b>CCNA Security</b>	<b>CCNP Security</b>	<b>CCIE Security</b>
	ICND1 100-105	IINS 210-260	SENSS 300-206 SITCS 300-207 SISAS 300-208 SIMOS 300-209	Written 350-018 & Lab Exam
<b>Wireless</b>	<b>CCENT</b>	<b>CCNA Wireless</b>	<b>CCNP Wireless</b>	<b>CCIE Wireless</b>
	ICND1 100-105	WIFUND 200-355	WIDESIGN 300-360 WIDEPLOY 300-365 WITSHOOT 300-370 WISECURE 300-375	Written 350-050 & Lab Exam
Cloud Solutions	Entry-Level	Associate	Professional	Expert
<b>Cloud</b>	<b>CCENT</b>	<b>CCNA Cloud</b>	<b>CCNP Cloud</b>	<b>CCIE Cloud</b>
	ICND1 100-105	CLDFND 210-451 CLDADM 210-455	CLDINF 300-460 CLDDIS 300-465 CLDAUT 300-470 CLDACI 300-475	
Collaboration Solutions	Entry-Level	Associate	Professional	Expert
<b>Collaboration</b>	<b>CCENT</b>	<b>CCNA Collaboration</b>	<b>CCNP Collaboration</b>	<b>CCIE Collaboration</b>
		CICD 210-060 CIVNDI online training CIVND2 210-065	CIPTV1 300-070 CIPTV2 300-075 CTCOLLAB 300-080 CAPPS 300-085	Written 400-051 & Lab Exam
Data Center Solutions	Entry-Level	Associate	Professional	Expert
<b>Data Center</b>		<b>CCNA Data Center</b>	<b>CCNP Data Center</b>	<b>CCIE Data Center</b>
		DCICN 640-911 DCICT 640-916	DCUCI 642-999 DCUCD 642-998 DCUFI 642-997 DCUFD 642-996 or DCUCI 642-999 DCUCT 642-035 DCUFI 642-997 DCUFT 642-980	Written 350-080 & Lab Exam
Service Provider Solutions	Entry-Level	Associate	Professional	Expert
<b>Service Provider</b>		<b>CCNA Service Provider</b>	<b>CCNP Service Provider</b>	<b>CCIE Service Provider</b>
		SPNGN1 640-875 SPNGN2 640-878	SPROUTE 642-883 SPADVROUTE 642-885 SPCORE 642-887 SPEDGE 642-889	Written 350-029 & Lab Exam

## TRAINING DAY PACKAGES

Ease your planning. This offer is perfect if you don't know the exact demand of your annual employee training.

Choose one of the three available packages and make use of your trainings days throughout the year - customizable and cost-efficient. The Fast Lane training program offers you a wide range of high value certification trainings.

We offer you following three packages with flexible planning:

- Small      20 training days      8.400 EUR
- Medium    40 training days      15.200 EUR
- Large      60 training days      19.800 EUR



### CCNA Paket

Interconnecting Cisco Network Devices Part 1 (ICND1)

Interconnecting Cisco Network Devices Part 2 (ICND2)

Together for just **2.690 EUR**

Instead of the list prize of 4.100 EUR via single booking!

### CCNP Paket

Implementing Cisco IP Routing (ROUTE)

Implementing Cisco Switched Networks (SWITCH)

Troubleshooting and Maintaining Cisco IP Networks (TSHOOT)

Together for just **4.900 EUR**

Instead of the list prize of 6,750 EUR via single booking!

You can find many more offers on our homepage [www.flane.com](http://www.flane.com)



VUE - Authorised  
Test Centre

Fast Lane as a certified PearsonVue Testcenter, is glad to support you with the planning and realization of your certification.

# FAST LANE AUSTRIA CISCO SCHEDULE

Cisco Borderless Networks																
	Course ID	Days	Price in €	Course Name	Coursebegin Month / Day											
					1	2	3	4	5	6	7	8	9	10	11	12
CCNA	CI-ICND 1	5	2.050,-	Interconnecting Cisco Network Devices Part 1	11	8	7	11	9	6	4	1	5	3	11	12
	CI-ICND 2	5	2.050,-	Interconnecting Cisco Network Devices Part 2	25	22	21	25	17	20	18	22	19	17	21	12
	CI-CCNAX	5	2.690,-	Interconnecting Cisco Network Devices: Accelerated		1		4			25		12			19
CCNP	CI-ROUTE	5	2.250,-	Implementing Cisco IP Routing	18	29		18		13		29				14
	CI-SWITCH	5	2.250,-	Implementing Cisco Switched Networks		1	14		9	27			26			28
	CI-TSHOOT	5	2.250,-	Troubleshooting and Maintaining Cisco IP Networks		15		4	30		11			10		19
Cisco Network Design																
	Course ID	Days	Price in €	Course Name	Coursebegin Month / Day											
					1	2	3	4	5	6	7	8	9	10	11	12
CCDA	CI-DESGN	5	2.490,-	Designing for Cisco Internetwork Solutions				29				16				7
CCDP	CI-ARCH	5	2.490,-	Designing Cisco Network Service Architectures				25				29				19
Cisco Security																
	Course ID	Days	Price in €	Course Name	Coursebegin Month / Day											
					1	2	3	4	5	6	7	8	9	10	11	12
CCNA Security	CI-IINS	5	2.490,-	Implementing Cisco IOS Network Security	11		7		30			1		17		
	CI-SISAS	5	2.590,-	Implementing Cisco Secure Access Solutions	18		14			6		29				7
CCNP Security	CI-SENSS	5	2.590,-	Implementing Cisco Edge Network Security Solutions		1		4		20			12			14
	CI-SIMOS	5	2.590,-	Implementing Cisco Secure Mobility Solutions		15		18			4		26			28
	CI-SITCS	5	2.590,-	Implementing Cisco Threat Control Solutions		29			9		18			10		12
	CI-802.1X	3	2.290,-	Introduction to 802.1X Operations for Cisco Security Professionals					2			16				19
Further Courses	CI-SISE (ISE)	5	2.990,-	Implementing and Configuring Cisco Identity Services Engine	25							8				7
	CI-SASAA	5	2.690,-	Implementing Advanced Cisco ASA Security		29				27				10		
	CI-SBYOD	3	2.190,-	Implementing Cisco Bring Your Own Device Solutions			29									2
	CI-SASAC	5	2.790,-	Implementing Core Cisco ASA Security			21						26			
	CI-SWISE	2	1.490,-	Implementing Cisco Identity Services Engine for Wireless Engineers					17							
Cisco IronPort																
	Course ID	Days	Price in €	Course Name	Coursebegin Month / Day											
					1	2	3	4	5	6	7	8	9	10	11	12
Iron-Port	CI-SESA	3	2.250,-	Securing Email with Cisco Email Security Appliance					2							5
	CI-SWSA	2	1.500,-	Securing the Web with Cisco Web Security Appliance					23						24	
Cisco Collaboration																
	Course ID	Days	Price in €	Course Name	Coursebegin Month / Day											
					1	2	3	4	5	6	7	8	9	10	11	12
CCNA Collaboration	CI-CICD	5	2.590,-	Implementing Cisco Collaboration Devices		22			11			11		12		
	CI-CIVND1			ONLINE TRAINING												
	CI-CIVND2	5	2.990,-	Introducing Cisco Voice and Unified Administration			14	25			25		26			
CCNP Collaboration	CI-CIPTV1	5	2.950,-	Implementing Cisco Unified Communications Manager Part 1	18			4		6		8		17		
	CI-CIPTV2	5	2.950,-	Implementing Cisco Unified Communications Manager Part 2		1		18		20		22				7
	CI-CAPPS	5	2.950,-	Integrating Cisco Unified Communications Applications		22			9		4		5			21
	CI-CTCOLLAB	5	2.950,-	Troubleshooting Cisco IP Telephony and Video		29			30		18		19			12
Further Courses	FL-UC11	5	2.990,-	Implementing Cisco Unified Communications 11 Features	11			4			11			3		
	CI-IITUCX	5	2.690,-	Implementing Cisco IOS Telephony and Unified Communications Express	18						25			10		
	CI-UCCX	5	2.890,-	Deploying Cisco Unified Contact Center Express		15		18	30			22				14
	CI-UCSEC	5	2.690,-	Implementing Cisco Unified Communications Security			21			27			19			28

# FAST LANE AUSTRIA CISCO SCHEDULE

Cisco Wireless / Mobility Training																
	Course ID	Days	Price in €	Course Name	Coursebegin Month / Day											
					1	2	3	4	5	6	7	8	9	10	11	12
CCNA Wireless	CI-WIFUND	5	2.690,-	Implementing Cisco Wireless Network Fundamentals	11	29				6		22			14	
CCNP Wireless	CI-WIDESIGN	5	2.690,-	Designing Cisco Wireless Enterprise Networks				11								
	CI-WIDEPLOY	5	2.690,-	Deploying Cisco Wireless Enterprise Networks	18		14			27			5		28	
	CI-WITSHOOT	5	1.690,-	Troubleshooting Cisco Wireless Enterprise Networks	25			4			11		26			12
	CI-WISECURE	5	2.690,-	Securing Cisco Wireless Enterprise Networks		15			9			8		17		19
Cisco Service Provider																
	Course ID	Days	Price in €	Course Name	Coursebegin Month / Day											
					1	2	3	4	5	6	7	8	9	10	11	12
CCNA SP	CI-SPNGN1	5	2.590,-	Building Cisco Service Provider Next-Generation Networks Part 1				4			4			3		
	CI-SPNGN2	5	2.590,-	Building Cisco Service Provider Next-Generation Networks Part 2				18			18			17		
	FL-CCNA SP BC	5	3.490,-	CCNA Service Provider Power Workshop		8				13			26		28	
CCNP SP	FL-IOSXR	5	3.250,-	From IOS to IOS XR Workshop	25		21			20			5		21	
	CI-SPROUTE	5	2.990,-	Deploying Cisco Service Provider Network Routing	18			25			25			10		
	CI-SPADVROUTE	5	2.990,-	Deploying Cisco Service Provider Advanced Network Routing		8			9			22		17		
	CI-SPCORE	5	2.990,-	Implementing Cisco Service Provider Next-Generation Core Network Services		22			30			29			7	
Further Courses	CI-SPEDGE	5	2.990,-	Implementing Cisco Service Provider Next-Generation Edge Network Services			14			27			19		14	
	CI-MCAST	5	2.490,-	Implementing Cisco Multicast	11	29				6	18		26			
	CI-MPLS	5	2.690,-	Implementing Cisco MPLS	18		7	25				1		10		
	CI-MPLST	5	2.990,-	Implementing Cisco MPLS Traffic Engineering & Other Features	25		21		9						7	
	CI-BGP	5	2.690,-	Configuring BGP on Cisco Routers		1		11		20		8			14	
	CI-QOS	5	2.690,-	Implementing Cisco Quality of Service		8		18		27				5		28
	FL-MEWS	5	3.100,-	MPLS Expert Workshop		22			30		4		19			12
Cisco Data Center																
	Course ID	Days	Price in €	Course Name	Coursebegin Month / Day											
					1	2	3	4	5	6	7	8	9	10	11	12
CCNA DC	CI-DCICN	4	2.490,-	Introducing Cisco Data Center Networking		22				6				10		
	CI-DCICT	5	2.590,-	Introducing Cisco Data Center Technologies		29				13				17		
CCNP Data Center	CI-DCUFI	5	2.990,-	Implementing Cisco Data Center Unified Fabric		1			30				5			12
	CI-DCUFD	5	2.990,-	Designing Cisco Data Center Unified Fabric								1				19
	FL-UCS WS	5	3.650,-	Data Center Unified Computing Design & Implementation Workshop (CI-DCUCD & CI-DCUCI)	25			11				29			21	
	CI-DCUCT	3	2.290,-	Troubleshooting Cisco Data Center Unified Computing					2			16				
	CI-DCUFT	3	2.290,-	Troubleshooting Cisco Data Center Unified Fabric						23						5
	FL-FLEXPODI	5	3.650,-	FlexPod Infrastructure for VMWare - Design/Implementation & Administration		22					11				3	
Unified	CI-DCUCTS	4	2.490,-	Cisco Data Center Unified Computing Troubleshooting Specialist					17		25					
Switching	CI-DCNX1K	3	2.190,-	Implementing the Cisco Nexus 1000V			29					16			5	
	CI-DCNX5K	5	3.290,-	Implementing the Cisco Nexus 5000 and 2000		8		25			18				21	
	CI-DCNX7K	5	3.290,-	Implementing the Cisco Nexus 7000			20			13			12		19	
Appl. Netw.	CI-DCASI	5	2.990,-	Implementing Cisco Data Center Application Services				25			25					
Cisco Network Management																
	Course ID	Days	Price in €	Course Name	Coursebegin Month / Day											
					1	2	3	4	5	6	7	8	9	10	11	12
	CI-CWLMS	5	2.450,-	Implementing CiscoWorks LMS				25						12		

Subject to modifications.  
All prices are exclusive of value added tax

## CompTIA

### **Certifications from the IT trade association!**

Founded in 1982, CompTIA brought together the IT channel in order to create an open dialogue between IT vendors and partners.

CompTIA as the professional IT association has brought out a certification program, which guarantees that the participants and graduates can stand up to the requests and demands of the industry, verifying this through the internationally recognized and approved certifications.

IT success stories start with CompTIA. Certifications are a powerful credential that help IT professionals worldwide ignite their IT career.

CompTIA A+ validates understanding of the most common hardware and software technologies in business and certifies the skills necessary to support complex IT infrastructures.

CompTIA Network+ validates the essential knowledge and skills needed to confidently design, configure, manage and troubleshoot any wired and wireless devices.

CompTIA Security+ is the certification globally trusted to validate foundational, vendor-neutral IT security knowledge and skills. As a benchmark for best practices in IT security, this certification covers the essential principles for network security and risk management – making it an important stepping stone of an IT security career.

### **Special requests**

*For any on-site training or special requests please don't hesitate to contact our dedicated team via [info@flane.com](mailto:info@flane.com) or call direct +43 1 707 95 38 - 0*



# fast lane

... training from the experts



**aruba**

a Hewlett Packard  
Enterprise company

AUTHORIZED  
**TRAINING CENTER**

★ ★ ★ 2016 EMEA EXCELLENCE IN TRAINING ★ ★ ★

FAST LANE > TRAINING FROM THE EXPERTS  
Fast Lane Institute for Knowledge Transfer GmbH  
Modocenterstraße 14/B4 > 1030 Vienna  
Tel +43 | 7079538-0 > Fax +43 | 7079538-20  
Info\_at@flane.com > [www.flane.com](http://www.flane.com)

Errors as well as literal and phrase mistakes excepted. All prices are exclusive of value added tax. Gender neutral wording – The content of this brochure is addressed to males and females equally.

# 2016

## ARUBA LEARNING PATHS

Mobility / Mobility Track				
	Course ID	Course Name	Delivery Method	Additional Information
		Wired Fundamentals - Prerequisites	Self Paced	Online Training: <a href="http://www.flane.at/course_offerings/aruba.html">http://www.flane.at/course_offerings/aruba.html</a>
		Wireless Fundamentals - Prerequisites	Self Paced	
ACMA	IAW	Introduction to Aruba WLANs	Instructor Led	Only offered in combination with SWDI as <b>Mobility Bootcamp (MBC)</b>
ACMP	IAP	Instant Access Points	Self Paced	Online Training: <a href="http://cloud.arubanetworks.com/getting-started">http://cloud.arubanetworks.com/getting-started</a>
	SWDI	Scalable WLAN Design and Implementation	Instructor Led	Only offered in combination with IAW as <b>Mobility Bootcamp (MBC)</b>
	MBC	Mobility Boot Camp	Instructor Led	Combines IAW & SWDI -> Bootcamp Authorized European Training Center
ACMX	ATS	Advanced Troubleshooting	Instructor Led	Authorized European Training Center

Clearpass / Access Management Track				
	Course ID	Course Name	Delivery Method	Additional Information
ACCP	CPE	ClearPass Essentials	Instructor Led	Combines ClearPass Policy Manager & ClearPass Guest

AirWave / Network Management Track				
	Course ID	Course Name	Delivery Method	Additional Information
ACDX	AICU	Airwave Installation, Configuration and Use	Instructor Led	Authorized European Training Center
Meridian / Beacon / Location Tracking				
	Course ID	Course Name	Delivery Method	Additional Information
ACEAP	EAE	Aruba Engagement & Analytics Essentials	Trainingsinstitut	Authorized European Training Center

Certification exams are validated by field personnel and are updated regularly to reflect current features and best practices. Recertification is required every three years.

**PEARSON**

VUE - Authorised  
Test Centre

Fast Lane as a certified PearsonVue Testcenter, is glad to support you with the planning and realization of your certification.

Founded in 2002, Aruba Networks is the leading provider of next-generation access management, network infrastructure and mobility application solutions for mobile enterprise networks.

The company's **Mobile Virtual Enterprise (MOVE)** architecture unifies these three core areas into one cohesive and manageable system that strengthens security and dramatically simplifies bring-your-own-device implementations.

**MOVE is software-defined so it easily adapts to the dynamics of mobility. This enables IT to manage traffic flows on any wired, wireless and remote network and control how devices and work applications are used – without upgrading or reconfiguring existing networks.**

Whether away or at work, MOVE gives users consistent, secure access to the appropriate corporate resources based on who they are, where they are and what device they're using.

The result is a rightsized network infrastructure that saves IT time, reduces capital and operating expenses, speeds-up service delivery, and provides every user with the highest-quality mobility experience.



## Aruba Certification

The multi-tier technical certification programs offered by Aruba distinguish individuals with engineering excellence in indoor and outdoor wireless LANs (WLANs), remote networking, mobility and network management.

Aruba certified engineers gain extensive engineering knowledge about solving real-world wireless deployment challenges and many quickly become the distinguished go-to resource for enterprise mobility projects. Rigorous associate-, professional-, and expert-level certification curriculum and exams ensure that network engineers gain the essential, comprehensive knowledge to accelerate their professional development.

- **Aruba Certified Mobility Professional (ACMP)** covers WLAN design, device provisioning, application management, and network security. Certification covers device onboarding and deploying voice and video over wireless. ACSP is open to all engineers, not just Aruba users.
- **Aruba Certified Solutions Professional (ACSP)** substantiates your comprehension of WLANs with more complex network settings in environments with multiple Mobility Controllers.
- **Aruba Certified ClearPass Professional (ACCP)** certification verifies your knowledge and ability to administer and maintain the ClearPass Policy Manager and ClearPass Guest system.
- **Aruba Wireless Mesh Professional (AWMP)** certification validates your ability to design and deploy outdoor wireless mesh networks that provide Wi-Fi and backhaul capabilities.
- **Aruba Certified Design Expert (ACDX)** validates your technical ability to architect large, extended campus and remote WLANs. ACMP is a prerequisite for this certification.
- **Aruba Certified Mobility Expert (ACMX)** tests your technical expertise in implementing and troubleshooting large-scale WLANs. ACMP is a prerequisite for this certification.

## **AR-MBC**

Aruba Mobility Boot Camp

Duration: 5 Days

### **Who should attend:**

Network engineers with more than a single controller in the network

### **Prerequisites**

Students are expected to come to the class with knowledge of Aruba's products. A conceptual knowledge of VLANs and network data flow & control helps frame the specifics of Aruba's network architecture. Students taking this class must complete the following self-paced online courses available to view at no charge on the Aruba Web Site.

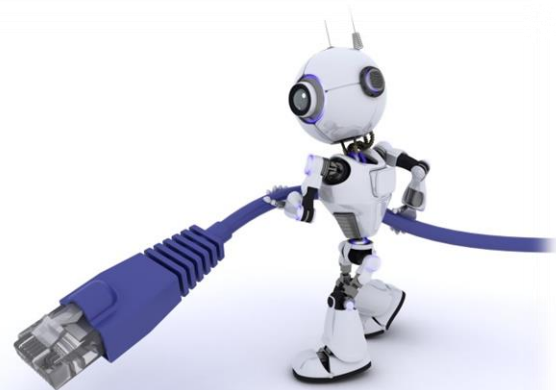
- Networking Fundamentals (Required for non CCNA capable students)
- Introduction to Aruba Technology (Required)

### **Course Content**

This class combines the IAW and SWDI classes into a single 5-day class. A prerequisite understanding of wireless fundamentals is mandatory, as well as VLAN fundamentals, data flow and control in a network, and basic routing principles. Successful conclusion of the course and in-class exam earns the participant the Aruba Certified Mobility Professional status.

### **Course Outline**

- Aruba Architecture and Features
- Mobility Controller initial setup and licensing using ArubaOS wizards
- RFProtect
- Rogue classification and containment
- Implementing Roles and Firewall Policies
- Advanced Firewall Functions
- Using WLAN policies to create a Secure Employee WLAN with 802.1X
- Using WLAN policies to create a Secure Guest WLAN with Captive Portal authentication
- Aruba WLAN Configuration
- Create 'VisualRF' plans to place access points and air monitors
- Use Visual RF Plan to determine your pre-deployment placement of Aps
- Import Visual RF Plan to AirWave
- Using ArubaOS RF Plan to monitor access points and air monitors
- Adaptive Radio Management (ARM)
- Using the integrated Spectrum Analyzer to monitor RF environment
- Provisioning Aruba thin APs using wizards and the GUI
- Remote Access Point (RAP) using API25 and RAP2's zero touch
- RAP Uplink Bandwidth Reservation
- Virtual Internet Access (VIA)
- Content Security Service (CSS)
- Secured Wired Access
- Master/local benefits
- Mobility / Roaming
- Site to site VPN
- Master redundancy
- Local redundancy
- AP redundancy
- Mesh solutions



## FAST LANE AUSTRIA ARUBA SCHEDULE

### ARUBA Mobility Boot Camp - AR MBC

Coursedate	Days	Price in EUR	Language	Country	Location
11.01. - 15.01.2015	5 Days	2.900,-	German	Germany	Munich
25.01. - 29.01.2016	5 Days	2.900,-	Italian	Italy	Milano
25.01. - 29.01.2016	5 Days	2.900,-	English	Belgium	Brussels
01.02. - 05.02.2016	5 Days	2.900,-	English	Switzerland	Zurich
15.02. - 19.02.2016	5 Days	2.900,-	Spanish	Spain	Madrid
29.02. - 04.03.2016	5 Days	2.900,-	English	Czech Republic	Prague
14.03. - 18.03.2016	5 Days	2.900,-	Italian	Italy	Milano
14.03. - 18.03.2016	5 Days	2.900,-	English	Netherlands	Amsterdam
11.04. - 15.04.2016	5 Days	2.900,-	German	Germany	Munich
11.04. - 15.04.2016	5 Days	2.900,-	English	Austria	Vienna
18.04. - 22.04.2016	5 Days	2.900,-	English	Czech Republic	Prague
09.05. - 13.05.2016	5 Days	2.900,-	Spanish	Spain	Madrid
23.05. - 27.05.2016	5 Days	2.900,-	English	Sweden	Stockholm
23.05. - 27.05.2016	5 Days	2.900,-	Italian	Italy	Milano
20.06. - 24.06.2016	5 Days	2.900,-	German	Germany	Munich
04.07. - 08.07.2016	5 Days	2.900,-	Spanish	Spain	Barcelona
11.07. - 15.07.2016	5 Days	2.900,-	English	Sweden	Stockholm
11.07. - 15.07.2016	5 Days	2.900,-	English	Austria	Vienna
25.07. - 29.07.2016	5 Days	2.900,-	English	Switzerland	Zurich
15.08. - 19.08.2016	5 Days	2.900,-	English	Netherlands	Amsterdam
22.08. - 26.08.2016	5 Days	2.900,-	English	Belgium	Brussels
29.08. - 02.09.2016	5 Days	2.900,-	English	Austria	Vienna
05.09. - 09.09.2016	5 Days	2.900,-	English	Norway	Oslo
12.09. - 16.09.2016	5 Days	2.900,-	English	Belgium	Brussels
19.09. - 23.09.2016	5 Days	2.900,-	English	Denmark	Copenhagen
19.09. - 23.09.2016	5 Days	2.900,-	English	Switzerland	Zurich
26.09. - 30.09.2016	5 Days	2.900,-	Spanish	Spain	Madrid
10.10. - 14.10.2016	5 Days	2.900,-	English	Finland	Helsinki
24.10. - 28.10.2016	5 Days	2.900,-	Italian	Italy	Milano
24.10. - 28.10.2016	5 Days	2.900,-	German	Germany	Munich
21.11. - 25.11.2016	5 Days	2.900,-	English	Belgium	Brussels

Subject to modifications  
All prices are exclusive of value added tax

### Special requests

For any on-site training or special requests please don't hesitate to contact our dedicated account manager Johann Strobl via [jstrobl@flane.com](mailto:jstrobl@flane.com) or call direct +43 1 707 95 38 - 44

## AR-CPE

Aruba Clear Pass Essentials

Duration: 5 Days

**Who should attend:** Network Administrators and IT Staff:

- who's network must support "Bring Your Own Device" (BYOD) provisioning and onboarding.
- who configure and manage guest and visitor WLAN access.
- responsible for reporting and compliance of WLANs

## Prerequisites

- Familiarity with network standard and terminology, VLANs and IP protocols including routing and switching.
- Basic WLAN terminology and concepts
- Knowledge of wired and wireless networking design and operations
- Knowledge of Radius server configuration, 802.1X authentication, AAA, LDAP and active Directory experience.

## Course Content

The "ClearPass Essentials (CPE)" training course provides you with a foundation in Network Access Control using ClearPass system. This course covers in depth configuration of ClearPass policy manager with a focus on Enforcement and Device Profiling. The course also includes setup and configuration details of primary application of ClearPass Guest like guest web login pages, guest self-registration, device provisioning using OnBoard and client posture analysis using OnGuard.

## Course Outline

- Introduction to ClearPass, ClearPass Licensing
- Introduction to Security - An Overview of RADIUS TACACS
- Introduction to Network Access Devices (NAD) - Configuration of Aruba Devices
- ClearPass Policy Manager Roles, Role Assignments
- Integration with Active Directory (AD)
- Overview of Policy Model, Configuration of a Policy Service, building a Policy Service
- Need for Enforcement Policies - Enforcement Profiles
- Need for Posture Checks - Posture Configurations • OnGuard •
- EndPoint Profiler - Profile Configuration
- Advanced Enforcement
- Monitoring
- Troubleshooting
- Introduction to ClearPass Guest Application
- ClearPass Guest Manager
- Need for Weblogin Pages - Customising the Weblogin Page • Network Configuration
- Introduction to Self-Registration - Configuration of Self-Registration, Backend Processing
- ClearPass Operations
- Admin Users
- Introduction to Onboard Application
- Onboard as Root Certificate Authority (CA) vs Intermediate CA
- ClearPass Guest Configuration for Onboarding –
- Network Configuration for Onboarding, Onboard Client Experience
- HotSpot
- ClearPass Insight
- ClearPass Clustering
- QuickConnect Application
- Integration of non-Aruba Devices with ClearPass
- Introduction to AirGroup

## FAST LANE AUSTRIA ARUBA SCHEDULE

### ARUBA ClearPass Essentials - AR CPE

Course date	Days	Price in EUR	Language	Country	Location
18.01. - 22.01.2016	5 Days	2.900,-	English	Czech Republic	Prague
15.02. - 19.02.2016	5 Days	2.900,-	English	Austria	Vienna
15.02. - 19.02.2016	5 Days	2.900,-	English	Sweden	Stockholm
22.02. - 26.02.2016	5 Days	2.900,-	German	Germany	Munich
29.02. - 04.03.2016	5 Days	2.900,-	English	Switzerland	Zurich
07.03. - 11.03.2016	5 Days	2.900,-	English	Netherlands	Amsterdam
07.03. - 11.03.2016	5 Days	2.900,-	Italian	Italy	Milano
14.03. - 18.03.2016	5 Days	2.900,-	Spanish	Spain	Madrid
21.03. - 25.03.2016	5 Days	2.900,-	English	Belgium	Brussels
11.04. - 15.04.2016	5 Days	2.900,-	English	Norway	Oslo
25.04. - 29.04.2016	5 Days	2.900,-	English	Denmark	Copenhagen
09.05. - 13.05.2016	5 Days	2.900,-	German	Germany	Munich
06.06. - 10.06.2016	5 Days	2.900,-	English	Czech Republic	Prague
06.06. - 10.06.2016	5 Days	2.900,-	Spanish	Spain	Madrid
18.07. - 22.07.2016	5 Days	2.900,-	English	Austria	Vienna
29.08. - 02.09.2016	5 Days	2.900,-	English	Netherlands	Amsterdam
19.09. - 22.09.2016	5 Days	2.900,-	English	Finland	Helsinki
17.10. - 21.10.2016	5 Days	2.900,-	English	Belgium	Brussels
17.10. - 21.10.2016	5 Days	2.900,-	Spanish	Spain	Madrid
07.11. - 11.11.2016	5 Days	2.900,-	English	Austria	Vienna
07.11. - 11.11.2016	5 Days	2.900,-	Spanish	Spain	Barcelona
14.11. - 18.11.2016	5 Days	2.900,-	English	Switzerland	Zurich
28.11. - 02.12.2016	5 Days	2.900,-	German	Germany	Munich

Subject to modifications  
All prices are exclusive of value added tax

### Special requests

For any on-site training or special requests please don't hesitate to contact our dedicated account manager Johann Strobl via [jstrobl@flane.com](mailto:jstrobl@flane.com) or call direct +43 1 707 95 38 - 44

## **AR-ATS**

Aruba Advanced Troubleshoot

Duration: 4 Days

### **Who should attend:**

This course is designed for individuals responsible for the provisioning and configuration maintenance of an Aruba based network. This course is not a hardware troubleshooting oriented class. Rather it focuses on the commands and screens necessary to diagnose network and wireless related issues.

### **Prerequisites**

Knowledge level at the ACMP level.

Students must be comfortable with provisioning profiles for various aspects of the Aruba Controller. The labs are written as objectives and are not documented in a step by step manner. Therefore, the student must know how to provision a controller without reliance upon detailed lab instructions.

### **Course content**

The “Advanced Troubleshooting (ATS)” course is a instructor-led course provides an overview of methodologies and tools for troubleshooting Aruba based networks. Labs are designed to inject problems into the student networks in a controlled fashion to demonstrate how various symptoms appear. Therefore, when problems are seen in a production environment, they will be more quickly identified and remedied.

### **Course Outline**

- Troubleshooting Philosophies
- Overview of Troubleshooting tools
  - Debug
  - Logs
- AP Boot Issues
- RF Issues
  - Spectrum Analysis
- IPSec
- Remote AP
- Client Issues; Connectivity & authentication
- Captive Portal
- Role Derivation
- Infrastructure Issues
- Master-Local Communications
- VRRP
- Radius & DHCP



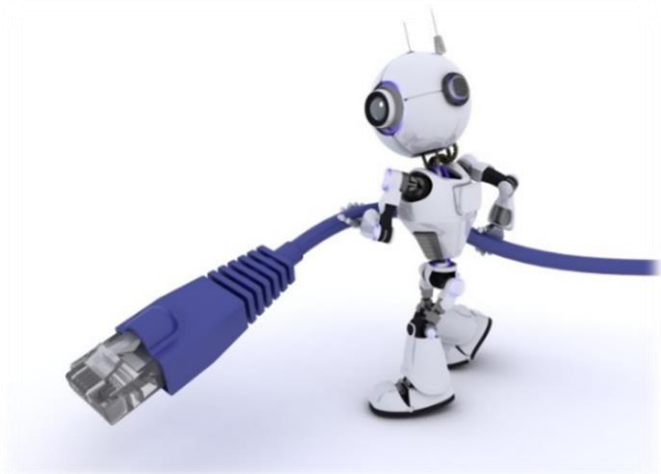


## FAST LANE AUSTRIA ARUBA SCHEDULE

### ARUBA Advanced Troubleshooting - AR ATS

<b>Coursedate</b>	<b>Days</b>	<b>Price in EUR</b>	<b>Language</b>	<b>Country</b>	<b>Location</b>
11.01. - 14.01.2016	4 Days	2.500,-	English	Netherlands	Amsterdam
25.01. - 28.01.2016	4 Days	2.500,-	English	Denmark	Copenhagen
22.02. - 25.02.2016	4 Days	2.500,-	English	Belgium	Brussels
23.05. - 26.05.2016	4 Days	2.500,-	Spanish	Spain	Madrid
30.05. - 02.06.2016	4 Days	2.500,-	English	Norway	Oslo
13.06. - 16.06.2016	4 Days	2.500,-	English	Switzerland	Zurich
18.07. - 21.07.2016	4 Days	2.500,-	English	Netherlands	Amsterdam
08.08. - 11.08.2016	4 Days	2.500,-	English	Czech Republic	Prague
04.10. - 07.10.2016	4 Days	2.500,-	German	Germany	Munich
17.10. - 20.10.2016	4 Days	2.500,-	English	Austria	Vienna
07.11. - 10.11.2016	4 Days	2.500,-	Italian	Italy	Milano
12.12. - 15.12.2016	4 Days	2.500,-	English	Switzerland	Zurich
12.12. - 15.12.2016	4 Days	2.500,-	Spanish	Spain	Madrid
12.12. - 15.12.2016	4 Days	2.500,-	English	Finland	Helsinki

Subject to modifications  
All prices are exclusive of value added tax



### Special requests

For any on-site training or special requests please don't hesitate to contact our dedicated account manager Johann Strobl via [jstrobl@flane.com](mailto:jstrobl@flane.com) or call direct +43 1 707 95 38 - 44

### **AR-EAE**

Aruba Engagement & Analytics  
Essentials  
Duration: 3 Days

### **Certification:**

- Upon completion of the course, participants are eligible to take the Aruba Certified Engagement & Analytics Professional certification (ACEAP) exam at Pearson VUE.

### **Equipment requirements**

Participants are required to bring a laptop with a Wi-Fi interface and administrative privileges to class. All other equipment will be provided.

### **Course content**

The Analytics and Mobile Engagement (AME) essentials training is a 3-day instructor-led classroom technical training course. This course covers the Meridian, Bluetooth beacons as well as the Analytics and Location Engine (ALE) platform. Participants will be provided with an in-depth technical overview of the features and will have an opportunity to tackle hands-on labs as well. Topics such as Meridian Appmaker and SDK, maps and app content creation will be covered. Students will be provided with a technical overview of beacon deployment and troubleshooting, with hands-on labs. In addition, the ALE platform will be covered and students will get an overview of how to deploy and troubleshoot the platform. Please refer to the full description for a full listing of modules.

### **Course Outline**

The following modules will be covered in class by the instructor, with accompanying hands-on labs. This module layout is subject to changes:

- Mod 1 – Meridian, BLE & ALE Intro
- Mod 2 – Maps and Placemarks
- Mod 3 – Pages and Events
- Mod 4 – Beacon positioning
- Mod 5 – Campaigns and notifications
- Mod 6 – Beacon Deployment and Installation
- Mod 7 – Beacon management
- Mod 8 – Beacon Operations and Maintenance
- Mod 9 – Troubleshooting
- Mod 10 – ALE and Analytics
- Mod 11 – Integration with ClearPass



## FAST LANE AUSTRIA ARUBA SCHEDULE

### ARUBA Engagement & Analytics Essentials - AR EAE

Course date	Days	Price in EUR	Language	Country	Location
11.01. - 13.01.2016	3 Tage	2.650,-	English	Finland	Helsinki
11.01. - 13.01.2016	3 Tage	2.650,-	English	Belgium	Brussels
25.01. - 27.01.2016	3 Tage	2.650,-	English	Netherlands	Amsterdam
01.02. - 03.02.2016	3 Tage	2.650,-	English	Norway	Oslo
22.02. - 24.02.2016	3 Tage	2.650,-	Italian	Italy	Milano
22.02. - 24.02.2016	3 Tage	2.650,-	English	Switzerland	Zurich
22.02. - 24.02.2016	3 Tage	2.650,-	Spanish	Spain	Madrid
29.02. - 02.03.2016	3 Tage	2.650,-	English	Austria	Vienna
14.03. - 16.03.2016	3 Tage	2.650,-	German	Germany	Munich
04.04. - 06.04.2016	3 Tage	2.650,-	English	Sweden	Stockholm
18.04. - 20.04.2016	3 Tage	2.650,-	English	Netherlands	Amsterdam
18.04. - 20.04.2016	3 Tage	2.650,-	Spanish	Spain	Madrid
25.04. - 27.04.2016	3 Tage	2.650,-	English	Belgium	Brussels
09.05. - 11.05.2016	3 Tage	2.650,-	English	Austria	Vienna
16.05. - 18.05.2016	3 Tage	2.650,-	English	Czech Republic	Prague
16.05. - 18.05.2016	3 Tage	2.650,-	English	Finland	Helsinki
23.05. - 25.05.2016	3 Tage	2.650,-	English	Switzerland	Zurich
06.06. - 08.06.2016	3 Tage	2.650,-	English	Netherlands	Amsterdam
13.06. - 15.06.2016	3 Tage	2.650,-	Italian	Italy	Milano
11.07. - 13.07.2016	3 Tage	2.650,-	German	Germany	Munich
11.07. - 13.07.2016	3 Tage	2.650,-	Spanish	Spain	Madrid
25.07. - 27.07.2016	3 Tage	2.650,-	English	Belgium	Brussels
25.07. - 27.07.2016	3 Tage	2.650,-	Spanish	Spain	Madrid
08.08. - 11.08.2016	3 Tage	2.650,-	English	Norway	Oslo
15.08. - 17.08.2016	3 Tage	2.650,-	English	Switzerland	Zurich
22.08. - 24.08.2016	3 Tage	2.650,-	Italian	Italy	Milano
05.09. - 07.09.2016	3 Tage	2.650,-	German	Germany	Munich
12.09. - 15.09.2016	3 Tage	2.650,-	English	Sweden	Stockholm
12.09. - 15.09.2016	3 Tage	2.650,-	English	Austria	Vienna
10.10. - 12.10.2016	3 Tage	2.650,-	Italian	Italy	Milano
10.10. - 12.10.2016	3 Tage	2.650,-	English	Netherlands	Amsterdam
24.10. - 26.10.2016	3 Tage	2.650,-	Spanish	Spain	Madrid
07.11. - 09.11.2016	3 Tage	2.650,-	English	Finland	Helsinki
21.11. - 23.11.2016	3 Tage	2.650,-	English	Norway	Oslo
28.11. - 30.11.2016	3 Tage	2.650,-	English	Belgium	Brussels
05.12. - 07.12.2016	3 Tage	2.650,-	English	Czech Republic	Prague
12.12. - 14.12.2016	3 Tage	2.650,-	Italian	Italy	Milano
12.12. - 14.12.2016	3 Tage	2.650,-	English	Austria	Vienna
12.12. - 14.12.2016	3 Tage	2.650,-	German	Germany	Munich
19.12. - 21.12.2016	3 Tage	2.650,-	English	Switzerland	Zurich

Subject to modifications  
All prices are exclusive of value added tax

### Special requests

For any on-site training or special requests please don't hesitate to contact our dedicated account manager Johann Strobl via [jstrobl@flane.com](mailto:jstrobl@flane.com) or call direct +43 1 707 95 38 - 44

## AR-AICU

Airwave Installation,  
Configuration & Use  
Duration: 4 Days

### Who should attend:

- Network Administrators who monitor and troubleshoot wireless networks
- Network and System Administrators responsible for installing and configuring network monitoring systems

### Prerequisites

- Basic WLAN terminology and concepts
- Knowledge of wired and wireless networking design and operations
- Experience installing network monitoring software

### Course content

This hands-on course provides the knowledge and experience required to install and use the AirWave Wireless Management Suite: AirWave Management Platform (AMP), RAPIDS, and Visual RF. Structured labs provide students individual time with the AMP server and a series of exercises that progress from monitoring single-vendor networks to the configuration and reporting of complex, multi-vendor networks. Students also learn how to integrate AirWave products into an existing network. The course is WLAN vendor neutral and assumes a heterogeneous network.

AICU Installation, Configuration and Use is appropriate for those new to the AirWave platform and provides an opportunity for the student to become familiar with the functions and capability of the product in a controlled lab environment.

### Course Outline

- Introduction to AICU
- Installing AICU
- Adding Device to AICU
- Using Visual RF and Visual RF Plan
- Troubleshooting Clients and Wireless Networks
- Rogue Detection and Using RAPIDS
- Managing Administrative Access, Alerts, Triggers and Reporting
- Scalability and Redundancy
- AICU System Administration
- Wired Device Management
- Aruba Configuration Methodologies
- Configuring Aruba Devices with AICU
- Aruba IAP Management
- Cisco Configuration Methodologies
- Configuring Cisco Devices with IOS Templates
- Cisco WLC Configuration

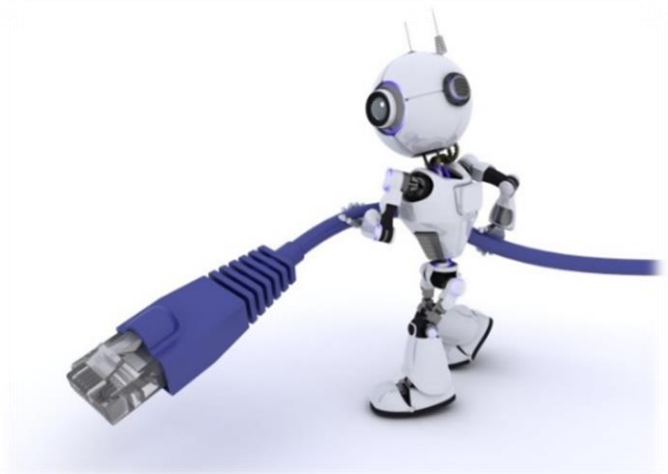


## FAST LANE AUSTRIA ARUBA SCHEDULE

### ARUBA Airwave Installation, Configuration Use - AR AICU

Course date	Days	Price in EUR	Language	Country	Location
29.02. - 03.03.2016	4 Days	2.500,-	German	Germany	Munich
11.04. - 14.04.2016	4 Days	2.500,-	Spanish	Spain	Madrid
25.04. - 28.04.2016	4 Days	2.500,-	English	Norway	Oslo
17.05. - 20.05.2016	4 Days	2.500,-	English	Belgium	Brussels
13.06. - 16.06.2016	4 Days	2.500,-	English	Austria	Vienna
20.06. -23.06.2016	4 Days	2.500,-	English	Norway	Oslo
20.06. -23.06.2016	4 Days	2.500,-	English	Netherlands	Amsterdam
04.07. - 07.07.2016	4 Days	2.500,-	Italian	Italy	Milano
01.08. - 04.08.2016	4 Days	2.500,-	German	Germany	Munich
22.08. - 25.08.2016	4 Days	2.500,-	English	Denmark	Copenhagen
26.09. - 29.09.2016	4 Days	2.500,-	English	Netherlands	Amsterdam
10.10. - 13.10.2016	4 Days	2.500,-	English	Switzerland	Zurich
21.11. - 24.11.2016	4 Days	2.500,-	Spanish	Spain	Madrid
28.11. - 01.12.2016	4 Days	2.500,-	English	Netherlands	Amsterdam
12.12. - 15.12.2016	4 Days	2.500,-	English	Belgium	Brussels

Subject to modifications  
All prices are exclusive of value added tax



### Special requests

For any on-site training or special requests please don't hesitate to contact our dedicated account manager Johann Strobl via [jstrobl@flane.com](mailto:jstrobl@flane.com) or call direct +43 | 707 95 38 - 44

## NEW AT FAST LANE: BUSINESS SIMULATION

### Walk down new paths with your training!

Complex contents are conveyed in a simple and clear way. Especially the interaction with other participants play a major role in success.

The advantage of gaining knowledge via simulations: Participants don't only learn theories, but can directly retrieve this knowledge which leads to a far better understanding than through traditional training methods.

Very experienced and highly qualified trainer support you and complement the practical simulation with theoretical background.

Through the simulation you can experience and vividly see the effects of your decisions on your business, your team and your success straight away.



Business rivalry is becoming more and more a competition of competence where of course established expertise is essential, but due to the rapid economic and technological changes, competences on a larger scale, training and formation are crucial.

### Fast Lane offers a variety of different business trainings:

- Business simulation for management
- Business simulation for sales and distribution
- Business simulation for technicians
- Business simulation for central services
- Business simulation for business founders
- Business simulation for your sector

Transfer of skills and expertise through action orientated training....

# *fast lane*e

*... training from the experts*



# 2016

FAST LANE > TRAINING FROM THE EXPERTS  
Fast Lane Institute for Knowledge Transfer GmbH  
Modocenterstraße 14/B4 > 1030 Vienna  
Tel +43 | 7079538-0 > Fax +43 | 7079538-20  
Info\_at@flane.com > [www.flane.com](http://www.flane.com)

Errors as well as literal and phrase mistakes excepted. All prices are exclusive of value added tax. Gender neutral wording – The content of this brochure is addressed to males and females equally.



Authorized Learning Partner

NetApp certification lets you shine as a highly skilled NetApp professional, and shows that you have the skills necessary to manage and deploy NetApp technologies. Our certification program offers storage professionals a strong foundation and a comprehensive range of specializations to choose from.

Our certification program provides storage experts in the first instance the basic knowledge needed and then offers the opportunity to choose from a wide range of specializations.

## NETAPP CERTIFICATION PATH

### IMPLEMENTATION ENGINEER

<b>SPECIALIST</b>	NetApp Certified Implementation Engineer – SAN Specialist, Clustered Data ONTAP  Prerequisite: NCDA cDOT	NetApp Certified Implementation Engineer – Data Protection Specialist  Prerequisite: NCDA cDOT	NetApp Certified Implementation Engineer –SAN Specialist, Data ONTAP 7-Mode  Prerequisite: NCDA 7-Mode	NetApp Certified Implementation Engineer – SAN Specialist, E-Series
<b>PROFESSIONAL</b>	NetApp Certified Data Administrator, Clustered Data ONTAP		NetApp Certified Data Administrator, Data ONTAP 7-Mode	

### STORAGE ADMINISTRATOR

<b>PROFESSIONAL</b>	NetApp Certified Data Administrator, Clustered Data ONTAP
<b>ASSOCIATE</b>	NetApp Certified Storage Associate

### INSTALLATION ENGINEER

<b>PROFESSIONAL</b>	NetApp Certified Storage Installation Engineer, Clustered Data ONTAP
---------------------	--

### CONVERGED INFRASTRUCTURE

<b>SPECIALIST</b>	Cisco and NetApp FlexPod Design Specialist	Cisco and NetApp FlexPod Implementation and Administration Specialist
-------------------	--	---



## FAST LANE AUSTRIA NETAPP COURSEOFFER

### NETAPP TRAINING

Course ID	Days	Price in € / NTU's*	Course Name	Coursebegin Month / Day											
				1	2	3	4	5	6	7	8	9	10	11	12
NA-D8CADM	3	2.700,- / 36	Clustered Data ONTAP 8.3 Administration		22		11		13		29		3		12
NA- DATAPROT	2	1.800,- / 24	NetApp Dta Protection Administration		25		14		16			1	6		15
NA-CDOTDP-WS	5	4.500,- / 60	Clustered Data ONTAP 8.3 Administration		22		11		13		29		3		12
NA-MCCIW	2	1.800,- / 24	MetroCluster 8.3 Installation Workshop		8										
NA-COIW	3	2.700,- / 36	Clustered Data ONTAP Installation Workshop					2			16	12		14	
NA - ANCDA PW	5	4.500,- / 60	Advanced NCDA Power Workshop			21					1				19
NA - OCADM	4	3.600,- / 48	OnCommand Unif.Manager Administration			29				11					
NA - SAN PW	3	2.700,- / 36	SAN Implementation Workshop					17						2	

\* TU Price - Zone B

Subject to modifications  
All prices are exclusive of value added tax

**NetApp University training units (NTUs) let you order training in bulk and give you the flexibility to redeem units to best suit your business needs!**

### How to use your NetApp Training Units (NTU's):

- Valid PO number
- NetApp ID of the participant – linked to the company
- Courseregistration on our website or directly via email



### Special requests

For any on-site training or special requests please don't hesitate to contact our dedicated account manager Petra Deutschmann via [pdeutschmann@flane.com](mailto:pdeutschmann@flane.com) or call direct +43 1 707 95 38 – 42



# CALENDAR 2016

	January	February	March	April	May	June	July	August	September	October	November	December	
1	Fri New Years Day	Mon	Tue	Fri	Sun State Holiday Austria	Wed	Fri	Mon	Thu	Sat	Tue All Saint's Day	Thu	1
2	Sat	Tue	Wed	Sat	Mon	Thu	Sat	Tue	Fri	Sun	Wed All Soul's Day	Fri	2
3	Sun	Wed	Thu	Sun	Tue	Fri	Sun	Wed	Sat	Mon	Thu	Sat	3
4	Mon	Thu	Fri	Mon	Wed	Sat	Mon	Thu	Sun	Tue	Fri	Sun Second Advent	4
5	Tue	Fri	Sat	Tue	Thu Ascension Day	Sun	Tue	Fri	Mon	Wed	Sat	Mon	5
6	Wed Epiphany	Sat	Sun	Wed	Fri	Mon	Wed	Sat	Tue	Thu	Sun	Tue	6
7	Thu	Sun	Mon	Thu	Sat	Tue	Thu	Sun	Wed	Fri	Mon	Wed	7
8	Fri	Mon	Tue	Fri	Sun Mother's Day	Wed	Fri	Mon	Thu	Sat	Tue	Thu The Immaculate Conception	8
9	Sat	Tue Carnival Tuesday	Wed	Sat	Mon	Thu	Sat	Tue	Fri	Sun	Wed	Fri	9
10	Sun	Wed Ash Wed.	Thu	Sun	Tue	Fri	Sun	Wed	Sat	Mon	Thu	Sat	10
11	Mon	Thu	Fri	Mon	Wed	Sat	Mon	Thu	Sun	Tue	Fri	Sun Third Advent	11
12	Tue	Fri	Sat	Tue	Thu	Sun	Tue	Fri	Mon	Wed	Sat	Mon	12
13	Wed	Sat	Sun	Wed	Fri	Mon	Wed	Sat	Tue	Thu	Sun	Tue	13
14	Thu	Sun Valentine's Day	Mon	Thu	Sat Father's Day	Tue	Thu	Sun	Wed	Fri	Mon	Wed	14
15	Fri	Mon	Tue	Fri	Sun Whit Sunday	Wed	Fri	Mon Assumption	Thu	Sat	Tue St. Leopold's Day	Thu	15
16	Sat	Tue	Wed	Sat	Mon Whit Monday	Thu	Sat	Tue	Fri	Sun	Wed	Fri	16
17	Sun	Wed	Thu	Sun	Tue	Fri	Sun	Wed	Sat	Mon	Thu	Sat	17
18	Mon	Thu	Fri	Mon	Wed	Sat	Mon	Thu	Sun	Tue	Fri	Sun Fourth Advent	18
19	Tue	Fri	Sat	Tue	Thu	Sun	Tue	Fri	Mon	Wed	Sat	Mon	19
20	Wed	Sat	Sun Palm Sunday	Wed	Fri	Mon	Wed	Sat	Tue	Thu	Sun	Tue	20
21	Thu	Sun	Mon	Thu	Sat	Tue	Thu	Sun	Wed	Fri	Mon	Wed	21
22	Fri	Mon	Tue	Fri	Sun	Wed	Fri	Mon	Thu	Sat	Tue	Thu	22
23	Sat	Tue	Wed	Sat	Mon	Thu	Sat	Tue	Fri	Sun	Wed	Fri	23
24	Sun	Wed	Thu Maundy Thursday	Sun	Tue	Fri	Sun	Wed	Sat	Mon	Thu	Sat Christmas Eve	24
25	Mon	Thu	Fri Good Friday	Mon	Wed	Sat	Mon	Thu	Sun	Tue	Fri	Sun Christmas Day	25
26	Tue	Fri	Sat	Tue	Thu Corpus Christi	Sun	Tue	Fri	Mon	Wed Austrian National Day	Sat	Mon St. Stephan's Day	26
27	Wed	Sat	Sun	Wed	Fri	Mon	Wed	Sat	Tue	Thu	Sun First Advent	Tue	27
28	Thu	Sun	Mon Easter Monday	Thu	Sat	Tue	Thu	Sun	Wed	Fri	Mon	Wed	28
29	Fri	Mon	Tue	Fri	Sun	Wed	Fri	Mon	Thu	Sat	Tue	Thu	29
30	Sat		Wed	Sat	Mon	Thu	Sat	Tue	Fri	Sun	Wed	Fri	30
31	Sun		Thu		Tue		Sun	Wed		Mon		Sat New Year's Eve	31

...quality training from the experts