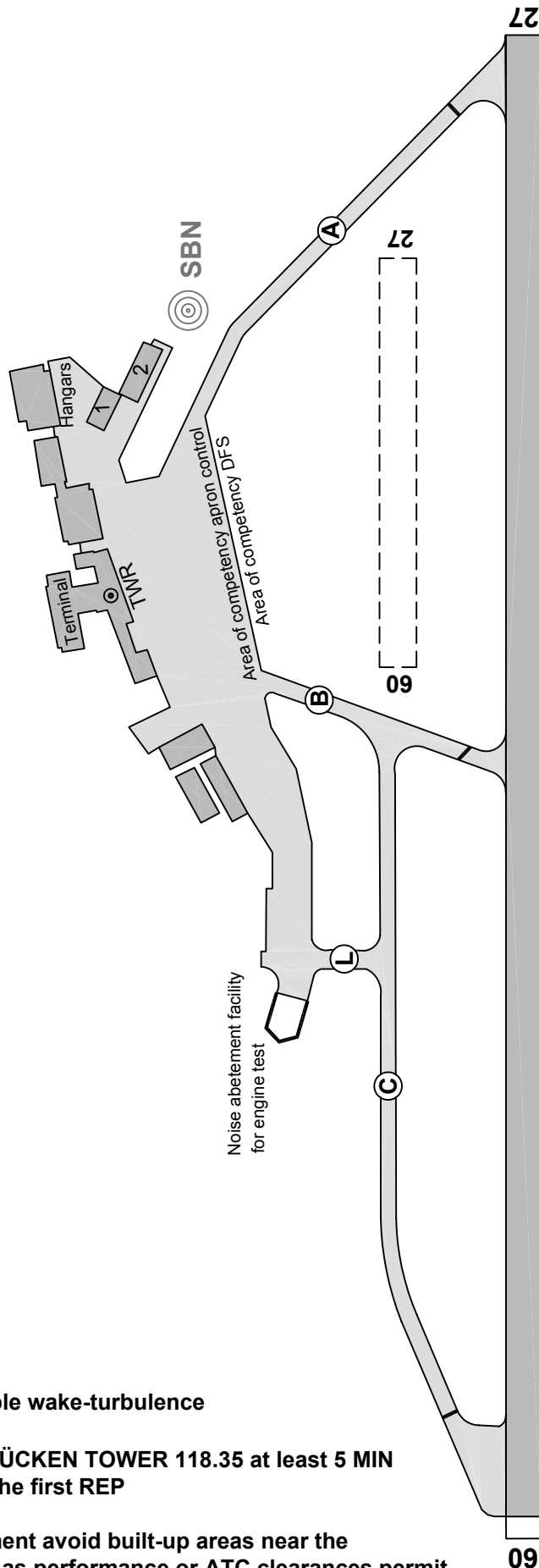


**For flight simulator use only.
Not to be used for real world flight.**

SAARBRÜCKEN Germany (EDDR)



Rwy dim (mtrs.):

09 / 27 (Asphalt) - 2000 x 45

09 / 27 (Grass) - 545 x 50

Elevations:

THR RWY 09 - 1022 ft

THR RWY 27 - 1056 ft

CAUTION: Possible wake-turbulence

**Contact SAARBRÜCKEN TOWER 118.35 at least 5 MIN
before reaching the first REP**

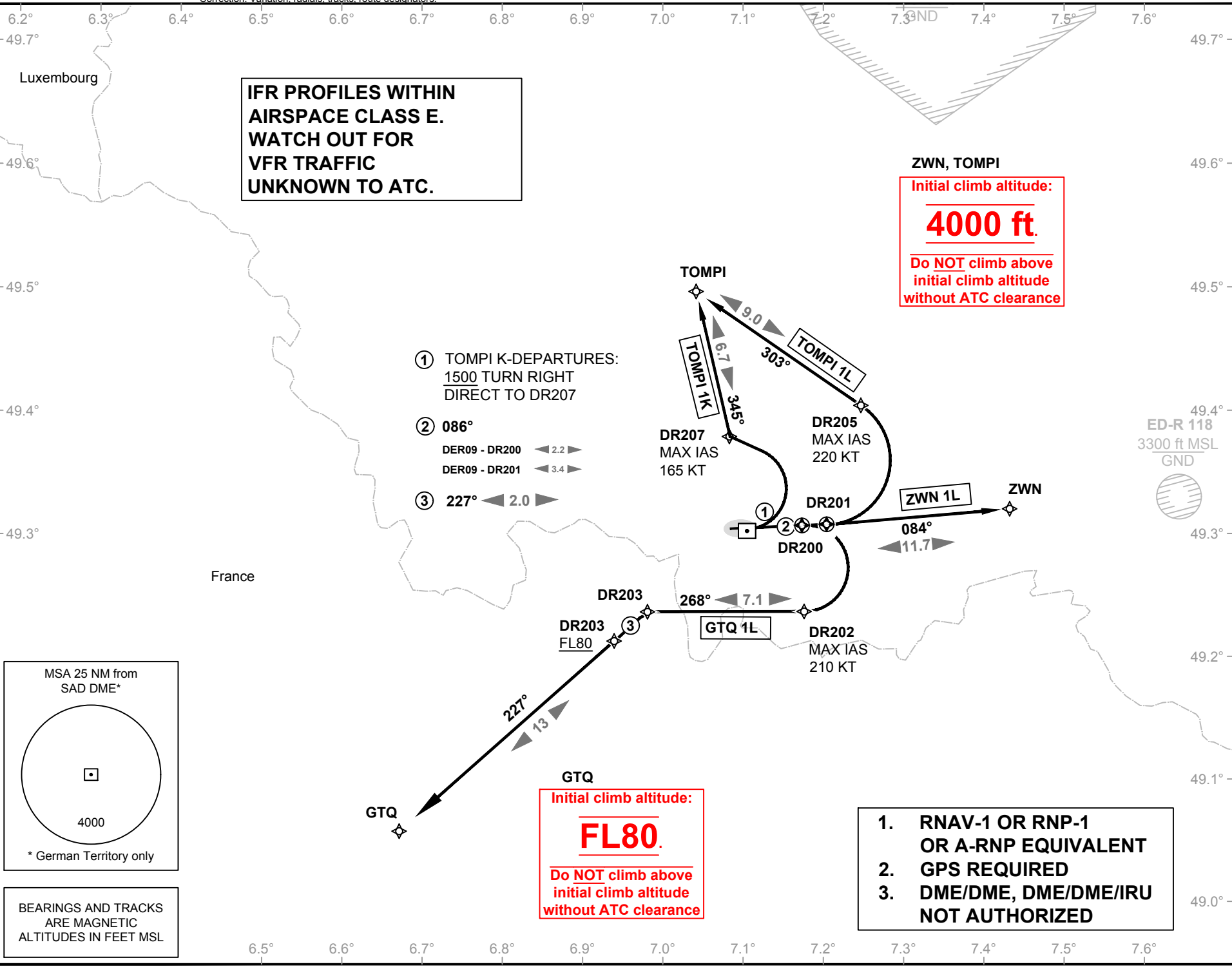
**For noise-abatement avoid built-up areas near the
aerodrome as far as performance or ATC clearances permit
- ATC instructions have priority**

Correction: Variation, radials, tracks, route designators.

**IFR PROFILES WITHIN
AIRSPACE CLASS E.
WATCH OUT FOR
VFR TRAFFIC
UNKNOWN TO ATC.**

ZWN, TOMPI
Initial climb altitude:
4000 ft.
Do NOT climb above
initial climb altitude
without ATC clearance

- ① TOMPI K-DEPARTURES:
1500 TURN RIGHT
DIRECT TO DR207
- ② 086°
DER09 - DR200 < 2.2 >
DER09 - DR201 < 3.4 >
- ③ 227° < 2.0 >



GTQ
Initial climb altitude:
FL80.
Do NOT climb above
initial climb altitude
without ATC clearance

- 1. RNAV-1 OR RNP-1
OR A-RNP EQUIVALENT
- 2. GPS REQUIRED
- 3. DME/DME, DME/DME/IRU
NOT AUTHORIZED

VATSIM Germany
Standard Departure Chart - Instrument RNAV (GPS)

Transition Altitude: 5000 ft.
VAR: 2°E

ED-R 118
3300 ft MSL
GND

Langen Radar: 129,670
Tower: 118,350
118,550

ATIS: 125,300

SAARBRÜCKEN
EDDR
SID
RWY 09

Effective: 1 Feb 2018, released 22.03.2018

© VACC Germany

For flight simulator use only. Not to be used for real world flight.

Correction: Variation, radials, tracks, route designators.

VATSIM Germany Standard Departure Chart - Instrument

SAARBRÜCKEN

EDDR

Transition Altitude: 5000 ft.

VAR: 2°E

ATIS: 125.300
Langen Radar: 129.670
Tower: 118.350
118.550

SID RWWY 09

49.7°
49.6°
49.5°
49.4°
49.3°
49.2°
49.1°
49.0°

**IFR PROFILES WITHIN
AIRSPACE CLASS E.
WATCH OUT FOR
VFR TRAFFIC
UNKNOWN TO ATC.**

ZWN, TOMPI
Initial climb altitude:
4000 ft.
Do NOT climb above
initial climb altitude
without ATC clearance

- ① Departures via TOMPI:
MAX IAS 220 KT until
established on R303 ZWN
- ② Departures via GTQ:
MAX IAS 210 KT until
established on heading 268°

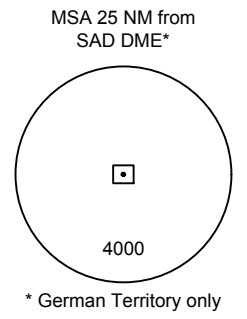
SAD
(116.75)
CH 114 Y
Saarbrücken
N 49° 12' 45"
E 007° 06' 58"

ZWN
114.80
CH 95 X
Zweibrücken
N 49° 13' 45"
E 007° 25' 04"

GTQ
111.25
CH 49 Y
Grostenquin
N 48° 59' 11"
E 006° 42' 58"

SR
360.00
Ensheim
N 49° 13' 04"
E 007° 13' 10"

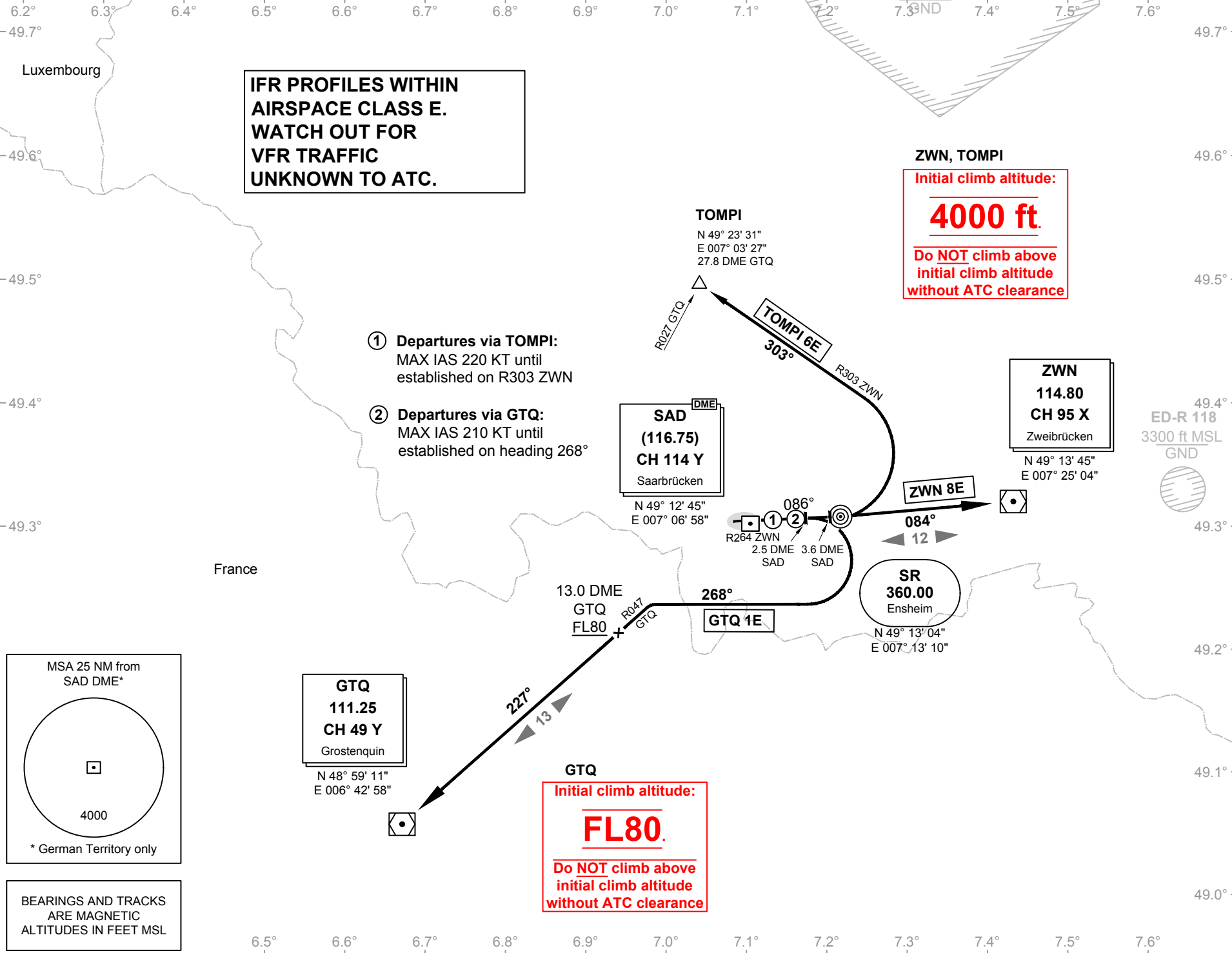
GTQ
Initial climb altitude:
FL80.
Do NOT climb above
initial climb altitude
without ATC clearance



BEARINGS AND TRACKS
ARE MAGNETIC
ALTITUDES IN FEET MSL

Effective: 1 Feb 2018, released 22.03.2018

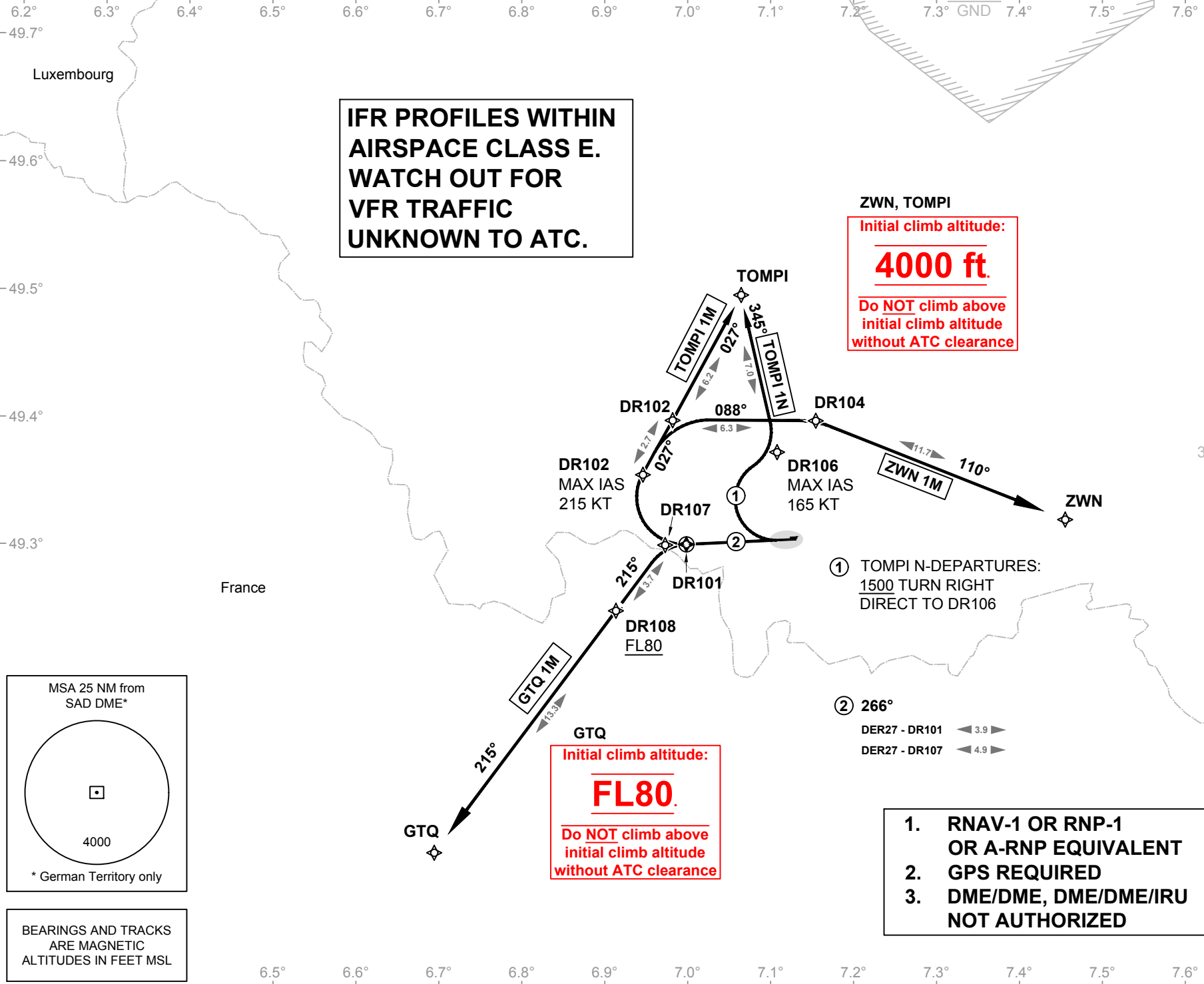
© VACC Germany



VATSIM Germany
Standard Departure Chart - Instrument
SAARBRÜCKEN
EDDR
SID
RWY 09

Designator	Route	After Take-Off		Remarks
		Climb to	Contact	
GTQ 1E	GROSTENQUIN ONE ECHO On course 086 SR to 2.5 DME SAD; RT, on heading 268° to intercept R047 GTQ; R047 GTQ inbound to GTQ (Δ). MAX IAS 210 KT until established on heading 268°. Cross 13.0 DME GTQ at FL 80 or above.	FL 80	Langen Radar 129.675	PDG 6.5% (395 ft/NM) due to airspace structure. If unable to comply, inform ATC.
ZWN 8E	ZWEIBRÜCKEN EIGHT ECHO On R264 ZWN to ZWN (Δ). Climb with 7% (425 ft/NM) until passing 3600.	4000 ft		PDG 7% (425 ft/NM) due to airspace structure. If unable to comply, inform ATC.
TOMPI 6E	TOMPI SIX ECHO On course 086° SR to 3.6 DME SAD; LT, to intercept R303 ZWN to TOMPI (Δ). MAX IAS 220 KT until established on R303 ZWN. Climb with 4% (245 ft/NM) until passing 2300.			1. PDG 6.5% (395 ft/NM) due to airspace structure. If unable to comply, inform ATC. 2. During activity of NLFS, alternative instructions will be given by ATC.

Contact Langen Radar immediately after take-off!



IFR PROFILES WITHIN AIRSPACE CLASS E. WATCH OUT FOR VFR TRAFFIC UNKNOWN TO ATC.

ZWN, TOMPI
Initial climb altitude:
4000 ft.
Do NOT climb above initial climb altitude without ATC clearance


GTQ
Initial climb altitude:
FL80.
Do NOT climb above initial climb altitude without ATC clearance

- ① TOMPI N-DEPARTURES:
1500 TURN RIGHT DIRECT TO DR106
- ② 266°
DER27 - DR101 <- 3.9 >-
DER27 - DR107 <- 4.9 >-

1. RNAV-1 OR RNP-1 OR A-RNP EQUIVALENT
2. GPS REQUIRED
3. DME/DME, DME/DME/IRU NOT AUTHORIZED

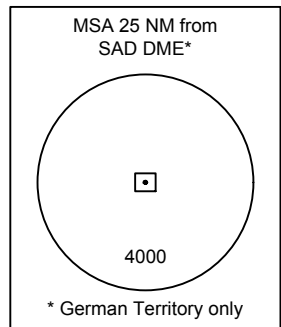
VATSIM Germany
Standard Departure Chart - Instrument RNAV (GPS)
 Transition Altitude: 5000 ft.
 VAR: 2°E

ED-R 118
 3300 ft MSL
 GND



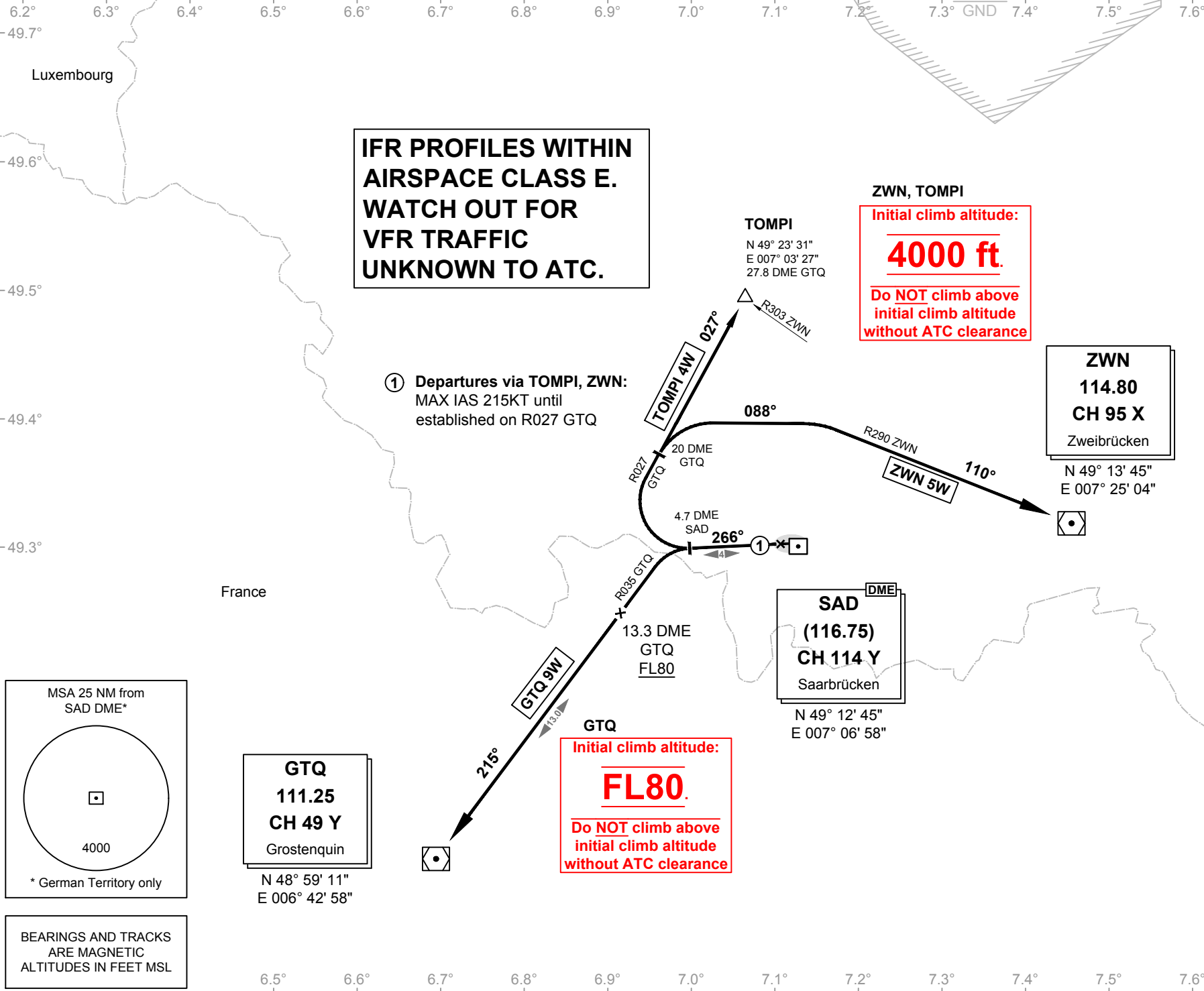
Langen Radar: 129.670
 Tower: 118.350
 118.550

SAARBRÜCKEN
EDDR
SID
RWY 27



BEARINGS AND TRACKS ARE MAGNETIC
 ALTITUDES IN FEET MSL

Correction: Variation, radials, tracks, route designators.



**IFR PROFILES WITHIN
AIRSPACE CLASS E.
WATCH OUT FOR
VFR TRAFFIC
UNKNOWN TO ATC.**

ZWN, TOMPI
Initial climb altitude:
4000 ft.
Do NOT climb above
initial climb altitude
without ATC clearance

GTQ
Initial climb altitude:
FL80.
Do NOT climb above
initial climb altitude
without ATC clearance

① Departures via TOMPI, ZWN:
MAX IAS 215KT until
established on R027 GTQ

**ZWN
114.80
CH 95 X**
Zweibrücken
N 49° 13' 45"
E 007° 25' 04"

**SAD
(116.75)
CH 114 Y**
Saarbrücken
N 49° 12' 45"
E 007° 06' 58"

**GTQ
111.25
CH 49 Y**
Grostenquin
N 48° 59' 11"
E 006° 42' 58"

ED-R 118
3300 ft MSL
GND

VATSIM Germany
Standard Departure Chart - Instrument

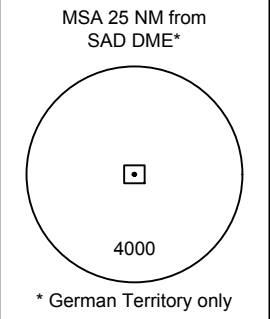
Transition Altitude: 5000 ft.
VAR: 2°E
ATIS: 125.300
Langen Radar: 129.670
Tower: 118.350
118.550

SAARBRÜCKEN
EDDR
SID
RWY 27

For flight simulator use only. Not to be used for real world flight.

Effective: 1 Feb 2018, released 22.03.2018

© VAACC Germany



BEARINGS AND TRACKS
ARE MAGNETIC
ALTITUDES IN FEET MSL

VATSIM Germany
Standard Departure Chart - Instrument
SAARBRÜCKEN
EDDR
SID
RWY 27

Designator	Route	After Take-Off		Remarks
		Climb to	Contact	
GTQ 9W	GROSTENQUIN NINE WHISKEY On Heading 266° to 4.7 DME SAD; LT, on R035 GTQ to GTQ (Δ). Cross 13.3 DME GTQ at FL80 or above.	FL 80	Langen Radar 129.675	PDG 13.7% (835 ft/NM) until passing FL80 due to airspace structure. If unable to comply, inform ATC.
ZWN 5W	ZWEIBRUECKEN FIVE WHISKEY On heading 266° to 4.7 DME SAD; RT, to intercept R027 GTQ; at 20.0 DME GTQ; RT, on heading 088° to intercept R290 ZWN; on R290 to ZWN (Δ). MAX IAS 215 KT until established on R027 GTQ.	4000 ft		1. PDG 3.6% (220 ft/NM) until passing A5000 due to airspace structure. If unable to comply, inform ATC. 2. During activity of NLFS, alternative instructions will be given by ATC.
TOMPI 4W	TOMPI FOUR WHISKEY On heading 266° to 4.7 DME SAD; RT, to intercept R027 GTQ; on R027 GTQ to TOMPI (Δ). MAX IAS 215 KT until established on R027 GTQ.			During activity of NLFS, alternative instructions will be given by ATC.

Contact Langen Radar immediately after take-off!

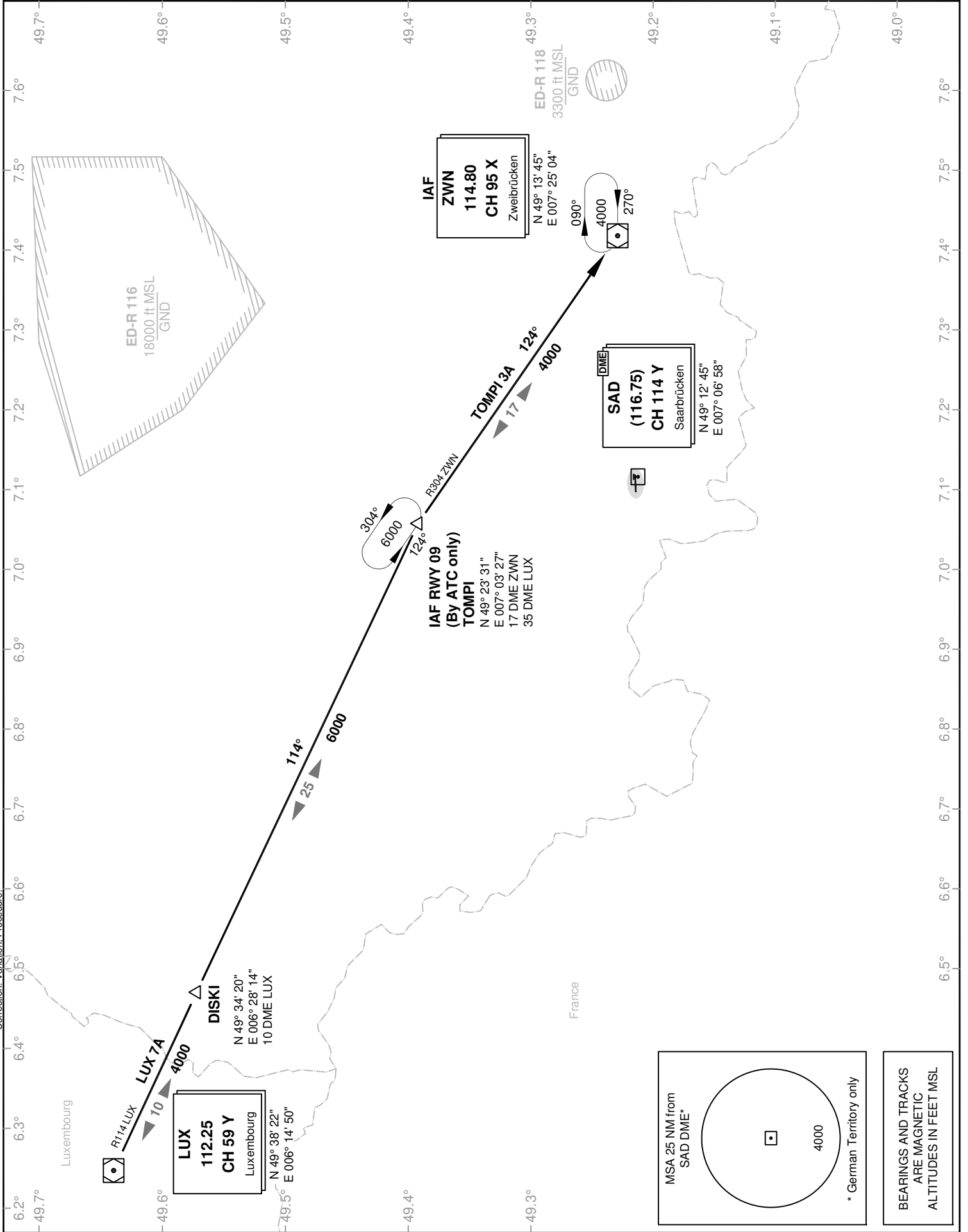
VATSIM Germany Standard Instrument Arrival Chart

SAARBRÜCKEN EDDR STAR RWY 09/27

Transition Altitude: 5000 ft.

ATIS: 125.300
Langen Radar: 129.670
Tower: 118.350
118.550

VAR: 1°E



Correction: Variation, Procedure.

VATSIM Germany
Standard Instrument Arrival Chart
SAARBRÜCKEN
EDDR
STAR
RWY 09/27

Designator	Identification Significant Points	MAG Track	Dist NM	MNM IFR Cruising Level ^f	Remarks
LUX 7A	LUXEMBOURG SEVEN ALPHA				1. Only for departure ELLX. 2. During activity of NLFS, alternative instructions will be given by ATC.
	Δ LUXEMBURG VOR/DME				
	Δ DISKI	114	10	4000	
	Δ TOMPI		25	6000	
	Δ ZWEIBRÜCKEN DVOR/DME	124	17	4000	
TOMPI 3A	TOMPI THREE ALPHA				During activity of NLFS, alternative instructions will be given by ATC.
	Δ TOMPI				
	Δ Zweibrücken DVOR/DME	124	17	4000	

VATSIM Germany Instrument Approach Chart

**SAARBRÜCKEN
EDDR**
**ILS or LOC
RWY 27**

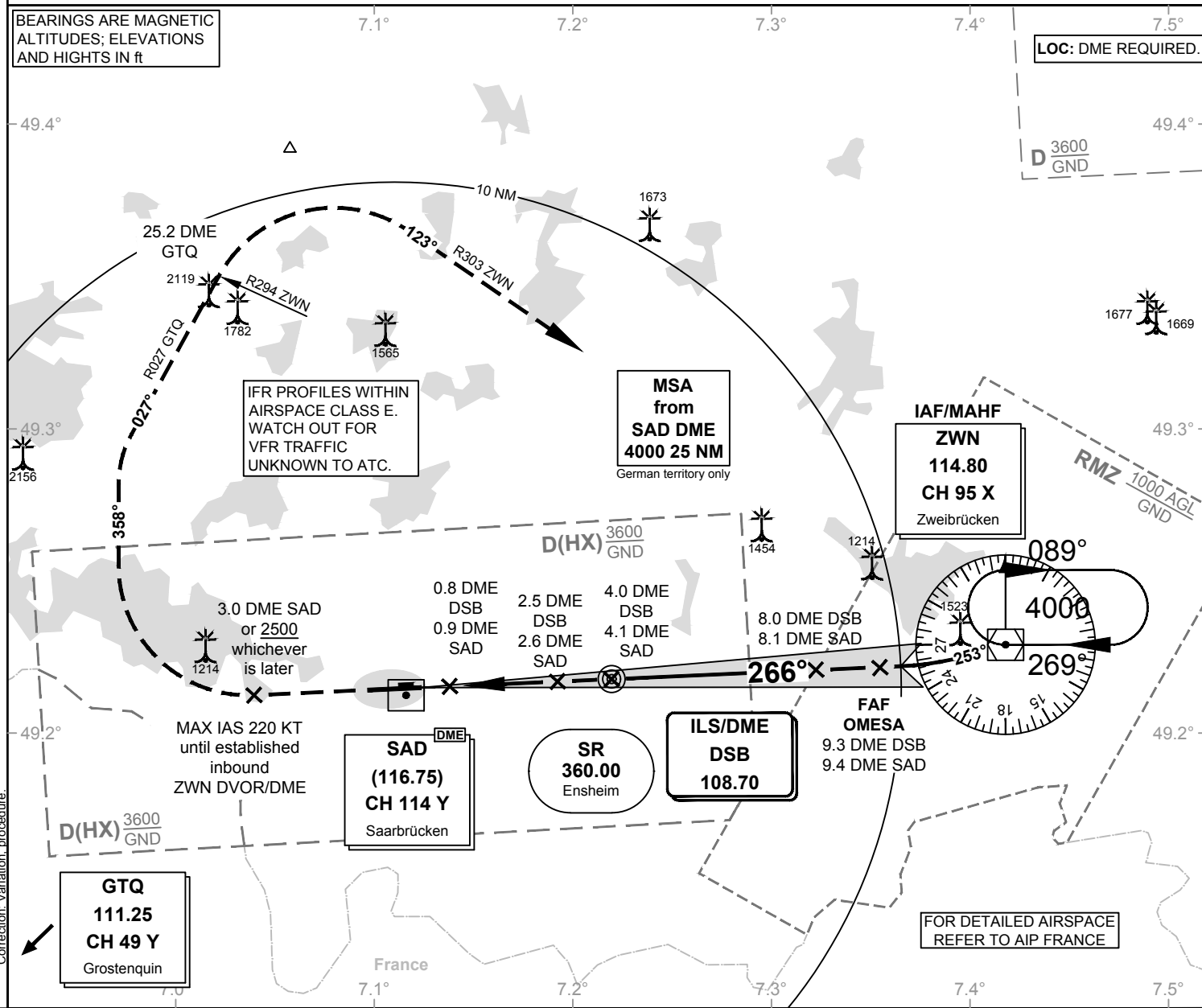
Elevation: 1058 ft.

ATIS: 125.300
Langen Radar: 129.675
Tower: 118.350
118.550

VAR: 2°E

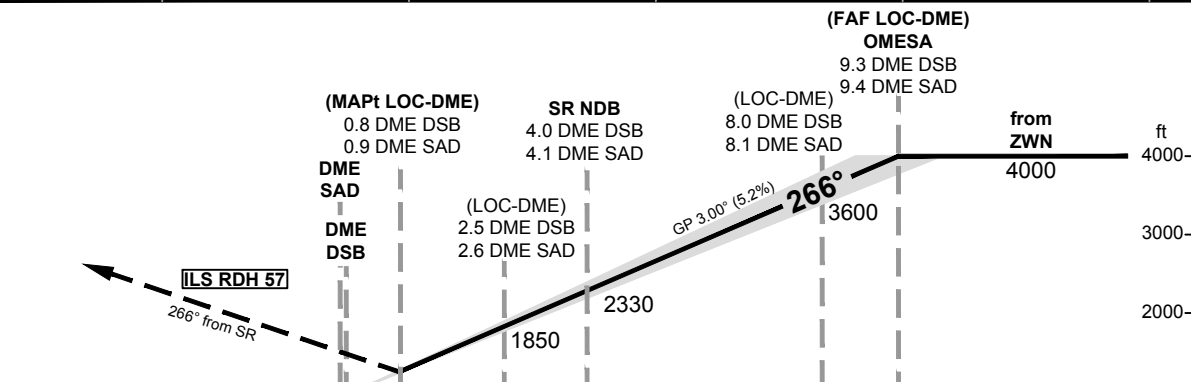
BEARINGS ARE MAGNETIC
ALTITUDES; ELEVATIONS
AND HEIGHTS IN ft

LOC: DME REQUIRED.



Correction: Variation, procedure.

OCA (OCH)	ILS CAT I	LOC DME	CIRCLING*
CAT A	1209 (153)	1490 (440)	1660
CAT B	1219 (163)	1490 (440)	1720
CAT C	1229 (173)	1490 (440)	1840
CAT D	1239 (183)	1490 (440)	1840



*NORTH OF AERODROME ONLY. NM 6 5 4 3 2 1 0 1 2 3 4 5 6 7 8 9 10 11 12 13 1000

MISSED APPROACH: Climb on course 266° from SR NDB to 3.0 DME SAD or 2500, whichever is later; RT, on heading 358° to intercept R027 GTQ to 25.2 DME GTQ (crossing R294 ZWN); RT; to intercept R303 ZWN; on R303 ZWN to ZWN DVOR/DME climbing 4000. MAX IAS 220 KT until established inbound ZWN DVOR/DME.

DME DSB	2	3	4	5	6	7	8	9	
DME THR	1.8	2.8	3.8	4.8	5.8	6.8	7.8	8.8	
ALTITUDE	1690	2010	2330	2650	2970	3290	3600	3920	

GS	kt	80	100	120	140	160	180
OM - THR (3.8 NM)	MIN:SEC	2:51	2:17	1:54	1:38	1:26	1:16
Rate of descent (5.2%)	ft / MIN	420	530	640	740	850	960

LOC-DME: Timing not authorized for defining the MAPt.

VATSIM Germany Instrument Approach Chart

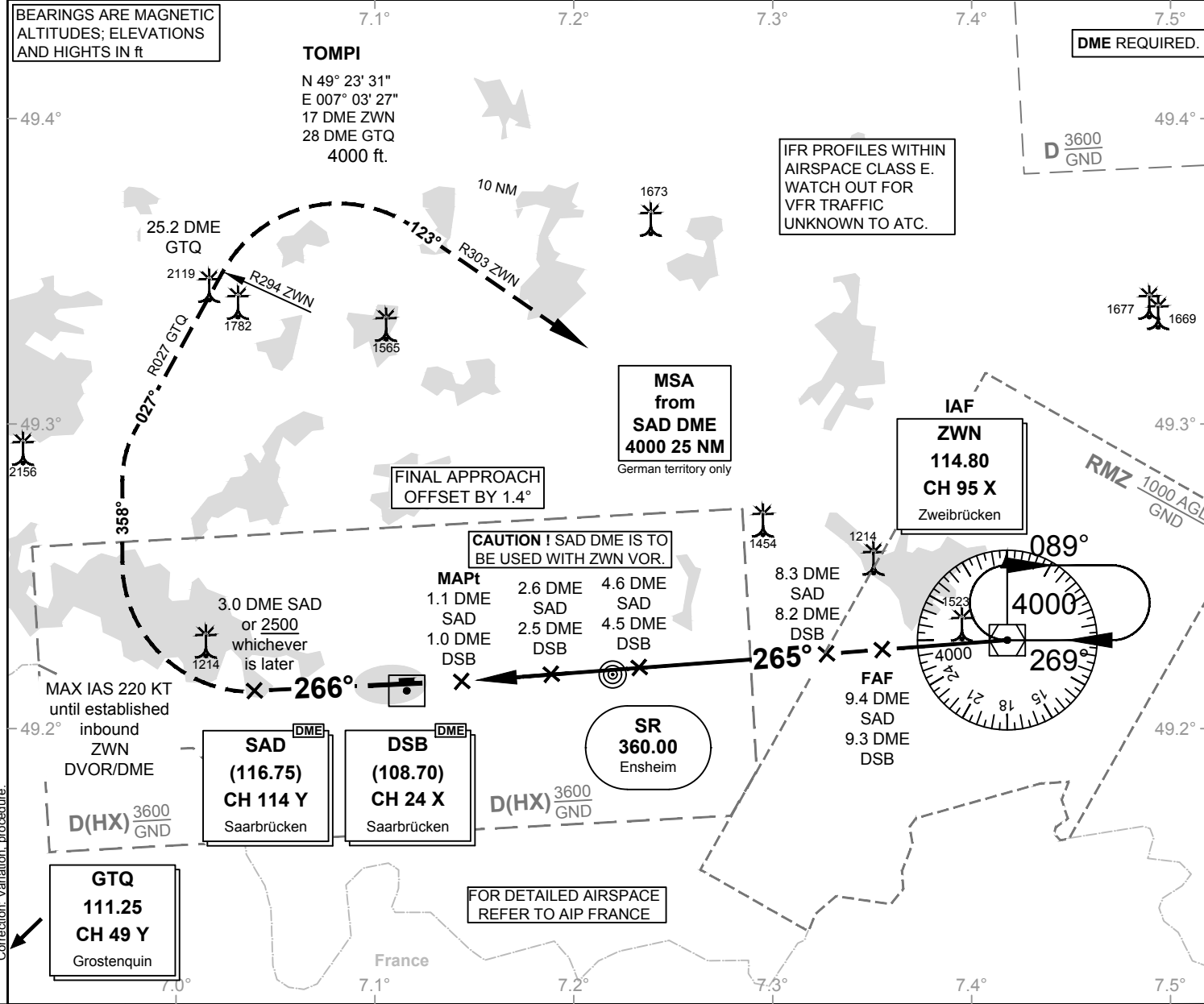
SAARBRÜCKEN
EDDR
VOR
RWY 27

Elevation: 1058 ft.

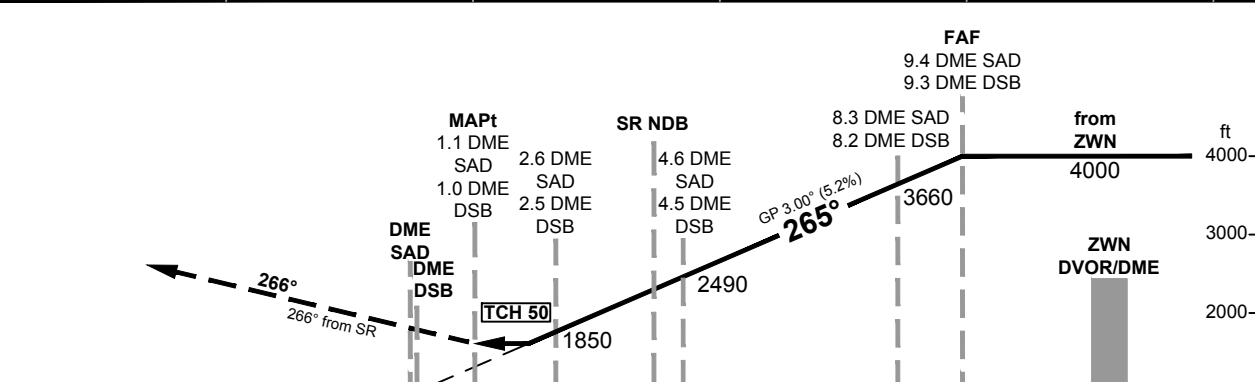
ATIS: 125.300
Langen Radar: 129.670
Tower: 118.350
118.550

VAR: 1°E

BEARINGS ARE MAGNETIC
ALTITUDES; ELEVATIONS
AND HEIGHTS IN ft



OCA (OCH)	VOR DME	CIRCLING*
CAT A	1610 (550)	1660
CAT B	1610 (550)	1720
CAT C	1610 (550)	1840
CAT D	1610 (550)	1840



*NORTH OF AERODROME ONLY.

MISSED APPROACH: Climb on course 266° from SR NDB to 3.0 DME SAD or 2500, whichever is later; RT, on heading 358° to intercept R027 GTQ to 25.2 DME GTQ (crossing R294 ZWN); RT; to intercept R303 ZWN; on R303 ZWN to ZWN DVOR/DME climbing 4000. MAX IAS 220 KT until established inbound ZWN DVOR/DME.

DME SAD	2	3	4	5	6	7	8	9
DME THR	1.7	2.7	3.7	4.7	5.7	6.7	7.7	8.7
ALTITUDE	1650	1970	2290	2610	2930	3240	3560	3880

GS	kt	80	100	120	140	160	180
3.5 DME SAD-MAPt (2.4)	MIN:SEC	1:48	1:26	1:12	1:02	0:54	0:48
Rate of descent (5.2%)	ft / MIN	420	530	640	740	850	960

Timing not authorized for defining the MAPt.

VATSIM Germany Instrument Approach Chart

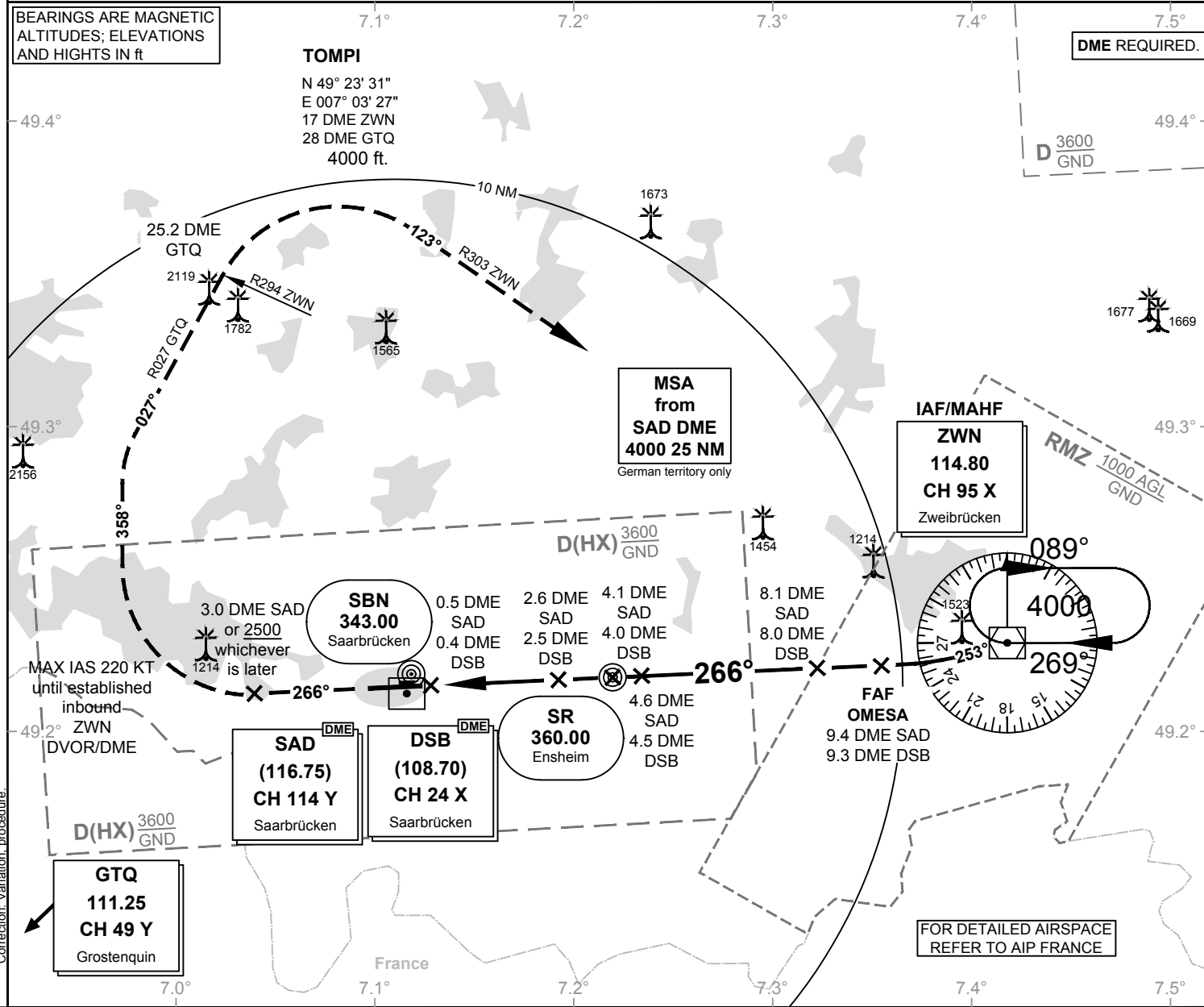
**SAARBRÜCKEN
EDDR
NDB
RWY 27**

Elevation: 1058 ft.

ATIS: 125.300
Langen Radar: 129.675
Tower: 118.350
118.550

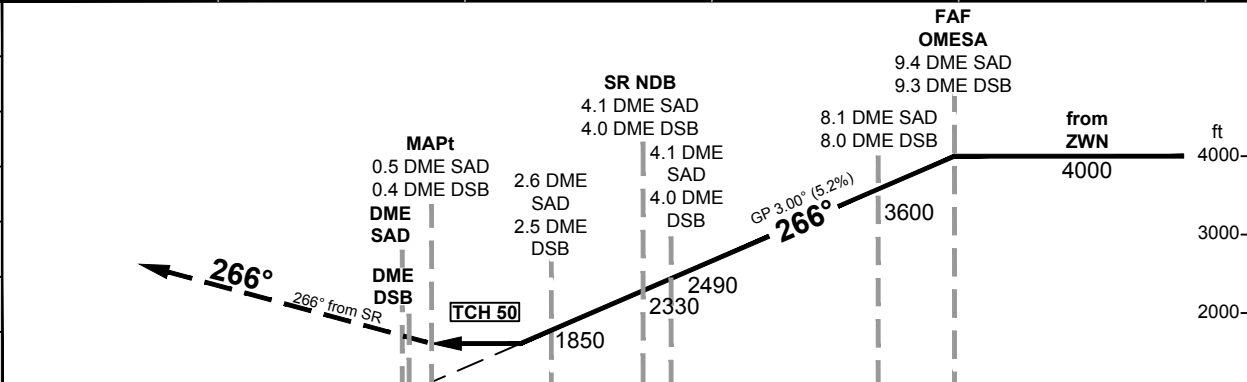
VAR: 2°E

BEARINGS ARE MAGNETIC
ALTITUDES; ELEVATIONS
AND HEIGHTS IN ft



Correction: Variation, procedure.

OCA (OCH)	NDB-DME	CIRCLING*
CAT A	1610 (550)	1660
CAT B	1610 (550)	1720
CAT C	1610 (550)	1840
CAT D	1610 (550)	1840



NORTH OF AERODROME ONLY.

MISSED APPROACH: Climb on course 266° from SR NDB to 3.0 DME SAD or 2500, whichever is later; RT, on heading 358° to intercept R027 GTQ to 25.2 DME GTQ (crossing R294 ZWN); RT, to intercept R303 ZWN; on R303 ZWN to ZWN DVOR/DME climbing 4000. MAX IAS 220 KT until established inbound ZWN DVOR/DME.

DME SAD	2	3	4	5	6	7	8	9
DME THR	1.7	2.7	3.7	4.7	5.7	6.7	7.7	8.7
ALTITUDE	1650	1970	2290	2610	2930	3240	3560	3880

GS	kt	80	100	120	140	160	180
SR - MAPt (3.6 NM)	MIN:SEC	2:42	2:10	1:48	1:33	1:21	1:12
Rate of descent (5.2%)	ft / MIN	420	530	640	740	850	960

Timing not authorized for defining the MAPt.

VATSIM Germany Instrument Approach Chart

**SAARBRÜCKEN
EDDR
VOR
RWY 09**

Elevation: 1058 ft.

ATIS: 125.300
Langen Radar: 129.670
Tower: 118.350
118.550

VAR: 1°E

BEARINGS ARE MAGNETIC
ALTITUDES; ELEVATIONS
AND HEIGHTS IN ft

DME REQUIRED.

IFR PROFILES WITHIN
AIRSPACE CLASS E.
WATCH OUT FOR
VFR TRAFFIC
UNKNOWN TO ATC.

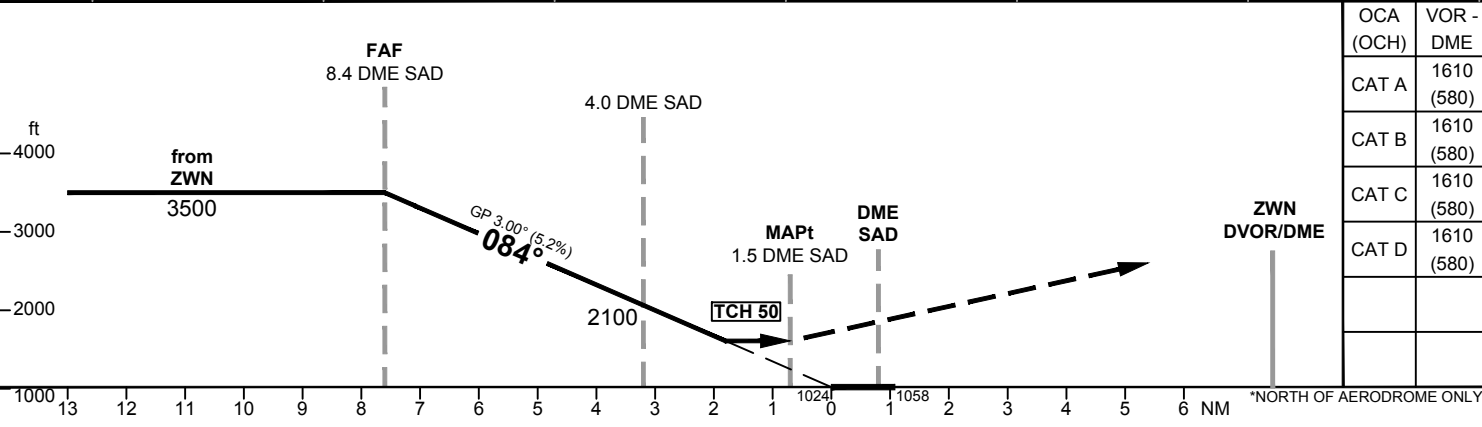
CAUTION! DURING FINAL
APPROACH SAD DME IS TO
BE USED WITH ZWN VOR.

MSA
from
SAD DME
4000 25 NM
German territory only

IAF
ZWN
114.80
CH 95 X
Zweibrücken

Correction: Variation, procedure.

FOR DETAILED AIRSPACE
REFER TO AIP FRANCE



MISSED APPROACH: Climb direct to ZWN DVOR/DME. Cross ZWN DVOR/DME at 4000.
PDG 3.6% (220 FT/NM).

DME SAD	8	7	6	5	4	3			
DME THR	7.2	6.2	5.2	4.2	3.2	2.2			
ALTITUDE	3370	3050	2730	2410	2100	1780			

GS	kt	80	100	120	140	160	180
4.0 DME SAD-MAPt (2.5)	MIN:SEC	1:53	1:30	1:15	1:04	0:56	0:50
Rate of descent (5.2%)	ft / MIN	420	530	640	740	850	960

Timing not authorized for defining the MAPt.