



# NEO SERIES

**WOOD BURNING STOVES**  
FOR HEATING SMALL TO LARGE SPACES



NEO 1.2 WOOD STOVE  
NEO 1.6 WOOD STOVE  
NEO 2.5 WOOD STOVE

# NEO SERIES

FREESTANDING STOVES  
FOR SMALL – LARGE SPACES



The NEO Series wood stoves make a bold statement with their tall profile, view of the flame, and modern design. Each stove provides exceptional performance with Pacific Energy's solid steel construction, floating firebox, stainless steel baffle, and high-efficiency heat exchangers.

Designed to heat occasional use rooms, cottages, and small spaces requiring shorter burn times, NEO 1.2 features an efficient 1.2 cubic foot steel firebox to deliver great heat output on a small scale. For medium and large spaces, the NEO 1.6 and NEO 2.5 are not only stylish wood stoves, they are exceptional performers for the serious wood burner.

With no-stoop loading, large glass-view doors, and simplified air control, they are easy to light and easy to use. The removable decorative cast iron trivet offers you a convenient cooking surface and extended clean-burning technology (EBT) provides unmatched heating performance with maximum burn times and fuel efficiency.

Choose the size that is right for your space and then complete the look from a variety of side panels in porcelain enamel, stainless steel, or painted metal.



# NEO 1.2

FOR SMALL – MEDIUM SPACES



# NEO 1.6

FOR SMALL – MEDIUM SPACES



## NEO 1.2

Heat Output Cord Wood

**30,200 BTU**

25,600 BTU EPA Test Fuel

Efficiency (LHV)	79.6%
Efficiency (HHV)	74%
Emissions	2.9 gm/hr.

Log Size (recommended)	16 inches
Log Size (max)	17 inches
Firebox Size	1.2 cu.ft.
Glass Size	173 sq.in.
Weight	266 lb
Chimney Size	6"

## NEO 1.6

Heat Output Cord Wood

**70,000 BTU**

35,000 BTU EPA Test Fuel

Efficiency (LHV)	81.5%
Efficiency (HHV)	75%
Emissions	3.4 gm/hr.

Log Size (recommended)	16 nches
Log Size (max)	18 inches
Firebox Size	1.6 cu.ft.
Glass Size	173 sq.in.
Weight	350 lb
Chimney Size	6"

# NEO 2.5

FOR MEDIUM – LARGE SPACES



## NEO 2.5

Heat Output Cord Wood

# 85,000 BTU

33,000 BTU EPA Test Fuel

Efficiency (LHV)	80.3%
Efficiency (HHV)	74%
Emissions	2.85 g/hr

Log Size (recommended)	16 inches
Log Size (max)	18 inches
Firebox Size	2.5 cu.ft.
Glass Size	184 sq.in.
Weight	460 lb.
Chimney Size	6"

## FEATURES AND OPTIONS

### STANDARD FEATURES (ALL MODELS)

Reliable, durable non-catalytic technology  
Air wash system for super clean ceramic glass  
High-tech multi-port combustion air injection system  
Inside and outside combustion air capable  
Floating firebox for extended stove life  
Heavy plate-steel top  
Porcelain Enamel, stainless steel, or painted finish  
304 Stainless Steel Baffle, insulation cover, rails and flame shield  
Boost air for easy lighting  
Integrated heat exchanger  
East-West loading  
Leveling Legs  
Mobile Home Approved

### STANDARD FEATURES (NEO 1.6, NEO 2.5)

Extended Burn Technology (EBT2)  
Removable Cast Iron Trivet over Cooking Surface

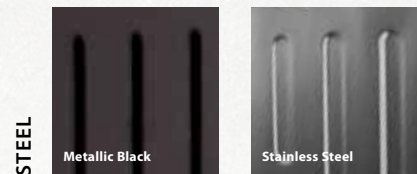
### DESIGN OPTIONS

Side panels in painted Metallic Black Steel, Stainless Steel, or a choice of three Porcelain Enamel colors

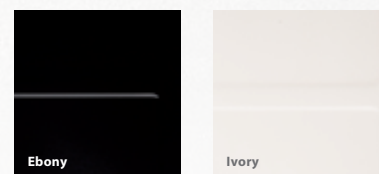
### PERFORMANCE OPTIONS

Variable speed blower

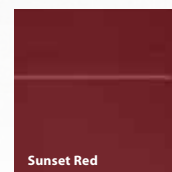
### SIDE PANEL OPTIONS



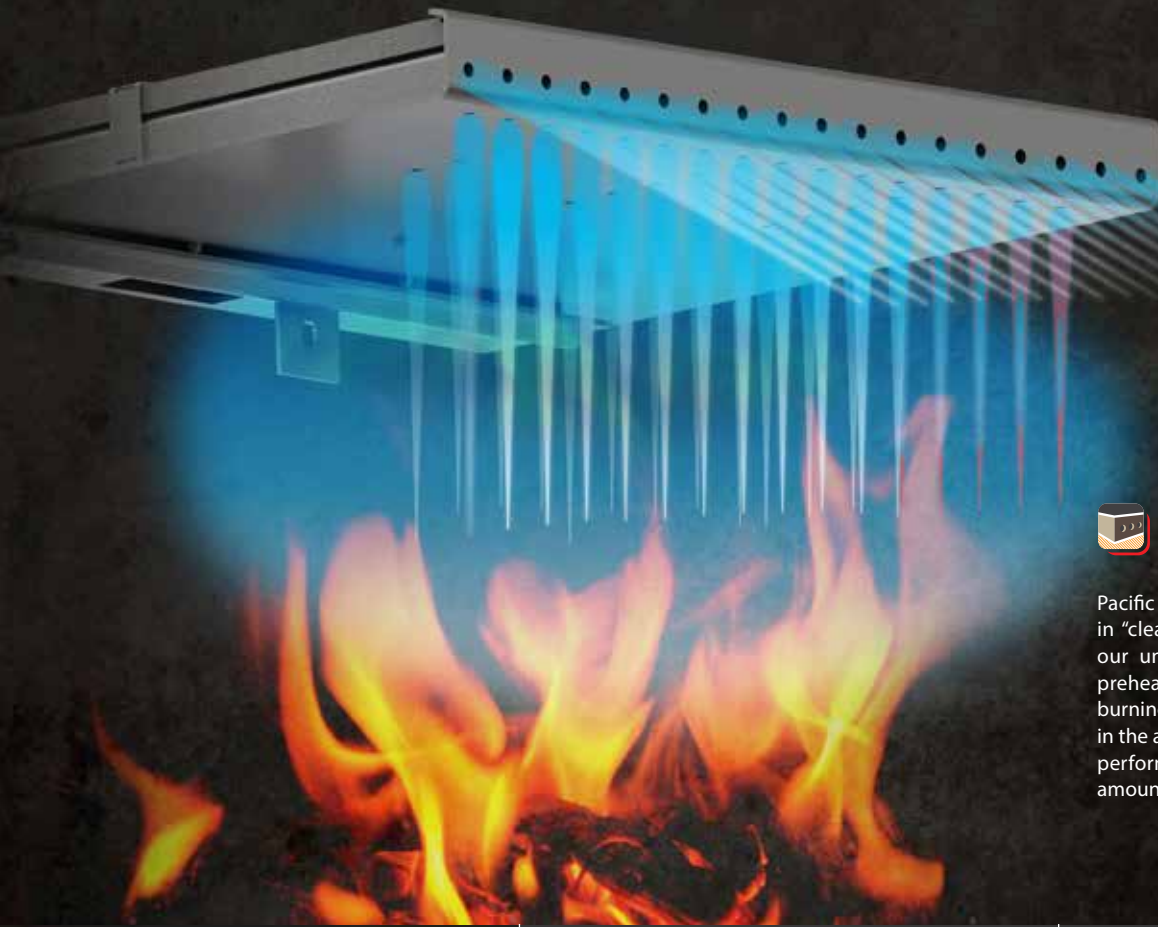
STEEL



PORCELAIN ENAMEL





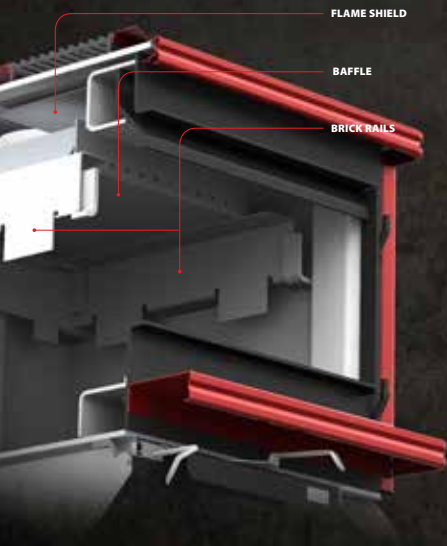


 **BAFFLE SYSTEM**

Pacific Energy is a recognized industry leader in “clean burn” technology, as exemplified in our unique high capacity baffle system for preheating secondary combustion air for re-burning. By burning the combustible elements in the air, we improve our stoves’ environmental performance while significantly reducing the amount of wood that is consumed.

 **FLOATING FIREBOX**

Our floating firebox system is legendary in the industry. Solidly designed with steel brick-support rails, it allows key parts to freely expand and contract, which reduces metal fatigue and adds years of life to the entire fireplace. The steel baffle (part of the clean-burning secondary combustion system) and the flame shield (which protects the stove top from intense heat) are all part of the floating firebox system.



 **SELF SEALING ASH DUMP**

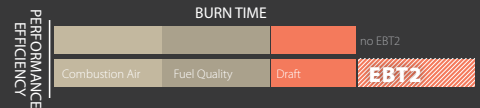
A formed and welded knife edge opening creates a superior air tight seal to the door while strengthening the stove face. This is a more labor intensive design but our experience has proven this is the best way to manufacture a fireplace.

 **KNIFE EDGE DOOR**

A formed and welded knife edge opening creates a superior air tight seal to the door while strengthening the stove face. This is a more labor intensive design but our experience has proven this is the best way to manufacture a fireplace.

 **EBT2 EXTENDED BURN TECHNOLOGY**

Our second-generation Extended Burn Technology, or EBT2, precisely regulates secondary airflow based on vacuum created by the chimney for a longer, cleaner, more economical burn. This automatically adjusts the secondary combustion system for a cleaner, more efficient burn and extended burn time.

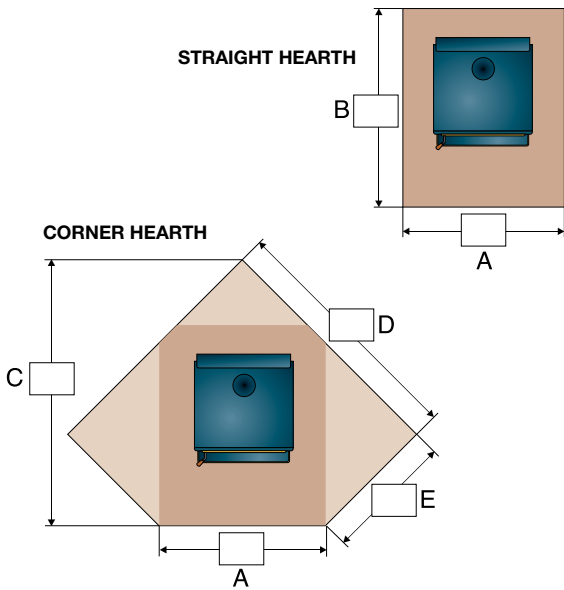


 **AIR WASH**  
A SYSTEM BY PACIFIC ENERGY

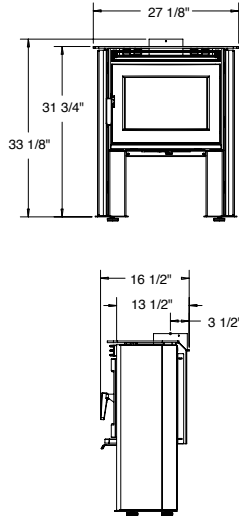
Pacific Energy developed the first effective airwash manifold system, a design that flows pre-heated air to the glass surface to keep it clean. A refined design now creates a high-pressure zone in the center and forces air to flow from above and across the glass. Even at low air settings, we are confident that our airwash system is the most effective available. And that our glass doors are among the cleanest in the industry.



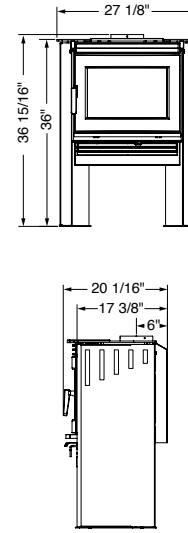
## FLOOR PROTECTOR DIMENSIONS



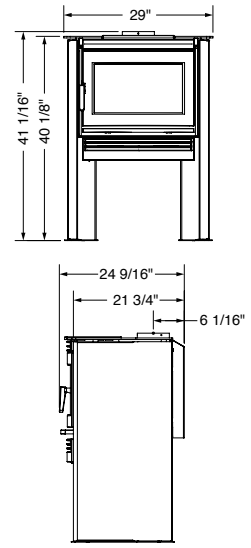
## NEO 1.2



## NEO 1.6



## NEO 2.5



## CANADA

### FLOOR PROTECTOR DIMENSIONS

	NEO 1.2					NEO 1.6					NEO 2.5				
	A	B	C	D	E	A	B	C	D	E	A	B	C	D	E
Minimum (Not extended)	43"	40"	-	-	-	43 1/8"	45 5/8"	-	-	-	45"	49 3/8"	-	-	-
Residential, single wall	43"	43"	52 1/2"	52 3/8"	22"	43 1/8"	49 5/8"	59 7/8"	57 5/8"	27 1/8"	45"	53 3/8"	62 3/8"	60 1/8"	28"
Residential, double wall, vertical connector	43"	41"	46 7/8"	48 3/8"	18"	43 1/8"	42 5/8"	52 3/4"	52 1/2"	22"	45"	46 3/8"	55 1/4"	55 1/8"	23"
Alcove, double wall, connector	43"	41"	-	-	-	43 1/8"	42 5/8"	-	-	-	45"	46 3/8"	-	-	-
Mobile home	43"	41"	46 7/8"	48 3/8"	18"	43 1/8"	42 5/8"	52 3/4"	52 1/2"	22"	45"	46 3/8"	55 1/4"	55 1/8"	23"

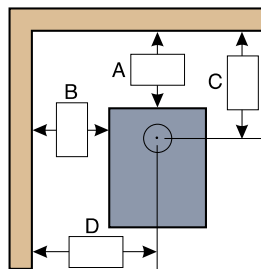
## USA

### FLOOR PROTECTOR DIMENSIONS

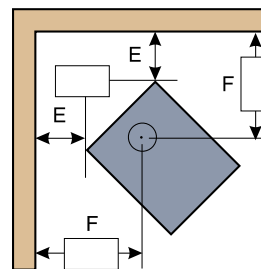
	NEO 1.2					NEO 1.6					NEO 2.5				
	A	B	C	D	E	A	B	C	D	E	A	B	C	D	E
Minimum (Not extended)	33 3/8"	28 1/2"	-	-	-	33 3/8"	32 3/4"	-	-	-	35"	37 3/8"	-	-	-
Residential, single wall, vertical connector	33 3/8"	39 1/2"	49"	46 3/8"	22 7/8"	33 3/8"	44 3/4"	55"	50 3/4"	27 1/8"	35"	49 3/8"	60 3/8"	55"	30 3/8"
Residential, double wall, vertical connector	33 3/8"	37 1/2"	43 3/8"	42 1/2"	18 7/8"	33 3/8"	37 3/4"	48"	45 3/4"	22 1/8"	35"	42 3/8"	53 3/8"	50"	25 3/8"
Alcove, double wall, connector	33 3/8"	37 1/2"	-	-	-	33 3/8"	37 3/4"	-	-	-	35"	42 3/8"	-	-	-
Mobile home	33 3/8"	37 1/2"	43 3/8"	42 1/2"	18 7/8"	33 3/8"	37 3/4"	48"	45 3/4"	22 1/8"	35"	42 3/8"	53 3/8"	50"	25 3/8"

### CLEARANCES TO COMBUSTIBLES

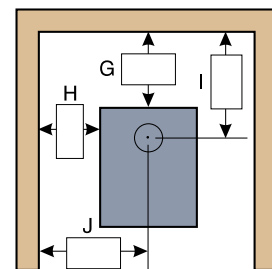
	From top of stove to ceiling	STRAIGHT (VERTICAL CONNECTOR)					STRAIGHT (HORIZONTAL CONNECTOR)				CORNER		ALCOVE			
		A	B	C	D	A	B	C	D	E	F	G	H	I	J	
RESIDENTIAL SINGLE WALL CONNECTOR	NEO 1.2	50"	11"	8"	14"	21 1/2"	11"	8"	14"	21 1/2"	7"	18"	11"	8"	14"	21 1/2"
	NEO 1.6	50"	12"	12"	18"	25 1/2"	12"	12"	18"	25 1/2"	8"	20"	N/A	N/A	N/A	N/A
	NEO 2.5	46"	12"	12"	18"	26 1/2"	12"	12"	18"	26 1/2"	8"	20 5/8"	N/A	N/A	N/A	N/A
RESIDENTIAL DOUBLE WALL CONNECTOR	NEO 1.2	50"	9"	7"	12"	20 1/2"	9"	7"	12"	20 1/2"	3"	14"	9"	7"	12"	20 1/2"
	NEO 1.6	50"	5"	8"	11"	21 1/2"	5"	8"	11"	21 1/2"	3"	15"	5"	8"	11"	21 1/2"
	NEO 2.5	46"	5"	8"	11"	22 1/2"	5"	8"	11"	22 1/2"	3"	15 5/8"	5"	8"	11"	22 1/2"
MOBILE HOME DOUBLE WALL CONNECTOR	NEO 1.2	50"	9"	7"	12"	20 1/2"	9"	7"	12"	20 1/2"	3"	14"	9"	7"	12"	20 1/2"
	NEO 1.6	50"	5"	8"	11"	21 1/2"	5"	8"	11"	21 1/2"	3"	15"	5"	8"	11"	21 1/2"
	NEO 2.5	46"	5"	8"	11"	22 1/2"	5"	8"	11"	22 1/2"	3"	15 5/8"	5"	8"	11"	22 1/2"



STRAIGHT



CORNER



ALCOVE

