



O 型環
O-RING



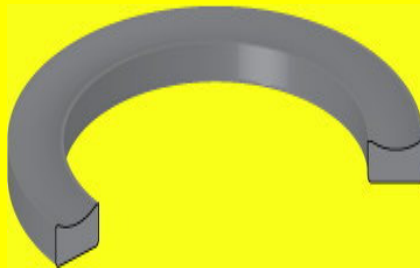
X 型環
X-RING



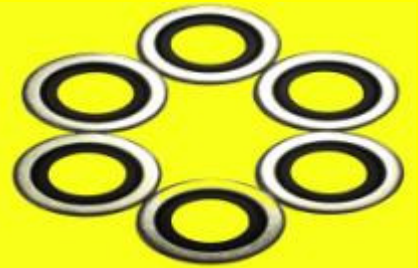
V 型環
V-SEAL



橡膠條
O-RING CORDS



背托環
BACK-UP RING



華司油封
BONDED SEAL



橡膠墊圈
GASKET



腳墊
RUBBER FEET



防塵套
CV BOOTS



富茂橡膠有限公司

FOR MORES RUBBER CO., LTD

地址:50562 彰化縣鹿港鎮海明街 2 號

Address: No.2, Haiming St., Lukang Township,
Changhua County 50562, Taiwan (R.O.C.)

TEL:+886-4-7841886

FAX:+886-4-7841889

Website: www.formores.com

Mail:formosa.rubber@msa.hinet.net



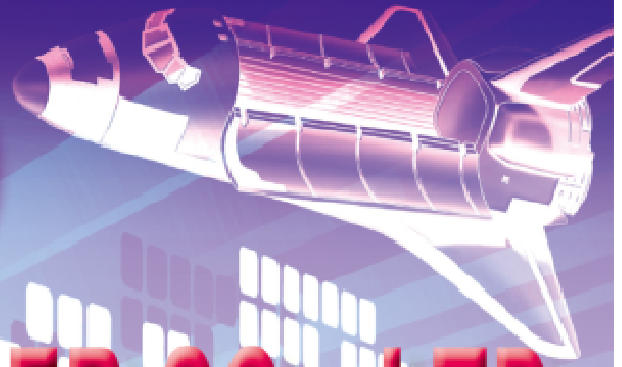
**FOR
MORES**

FOR MORES RUBBER CO., LTD

**Materials from DuPont, 3M, Dow Corning,
Nippon Zeon and Bayer-Polysar.**

Product Categories

- O-ring (AS568, JIS B2401 P&G, metric, non-standard),
- O-ring cord,
- X-rings,
- V-seals,
- Backup rings,
- Packing,
- Metal-bonded rubber,
- Custom-designed parts,
- Special OEM rubber



005

Profile

FOR MORES - One Name Matches All !

Since 2003, FOR MORES has served as the leading rubber manufacture in Taiwan. FOR MORES specialize in new product development which design and customize a variety of molds and rubber products to meet specific applications and needs of customers.

FOR MROES regards serving as first, quality is the top priority. The core competencies are to renew production and inspection equipments continuously, expect the most advanced equipments, the most effective and efficient production process and the strictest quality control to create value for customers.

FOR MORS will carry forward the cause and forge ahead into the future, move forward to the field of diversification and globalization to innovate more rubber components. FORMORES is enthusiastic about forging ahead toward the global market.

For Mores - Your Value Creation Partner!

Products

Main products : Custom rubber products, O-ring, Oil seals, X-ring, V-seals, O-ring Cords, Back up rings, Rubber packing & seal, O-ring kit, Hydraulic seals, Washer, Rubber-to-metal/plastic/fabric products.

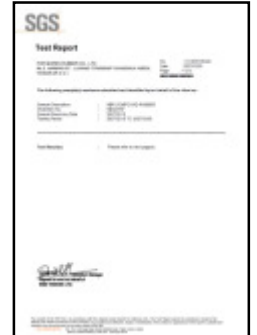
The raw material included NR, SBR, BR, EPDM, CR, NBR, ACM, Silicone, FKM. Products are according to international standard such as: AS 568A, JIS B2401 G, S, P, V series, and nonstandard sizes. FOR MORES components have been approved and extensively used on Automotive, Semi-conductor, Oil, Gas and Chemical, Hydraulic, Food and Drug equipment, New Energy and industry-wide grades.

Quality

FOR MORES is ISO 9001 certified. FOR MORES adapts Total Quality Management approach to long-term success. For Mores pursuits of innovation, quality enhancement and continues improvement as the success principle. FOR MORES six main philosophy of management are 『 Integrity, Service, Quality, Innovation, Enthusiasm, Efficiency 』. Hence, FOR MORES has built up itself as a well-known company due to the strict quality control, excellent management practices and customers affirmation.

Technology

FOR MORES provides elastomers solutions to many application needs. Our expanded portfolio of general-purpose and specialty elastomers cover the chemical processing and automotive industries. Rubber has a great influence on the ways machinery and industrial operation. Custom rubber materials serve a variety of purposes. FOR MORES fully understands the importance of our customers' needs. Our team takes full responsibility for product reliability. Technical papers, datasheets, MSDSs and more are available in one place to help you in your search for an elastomer product.



ROHS



REACH



ISO 9001



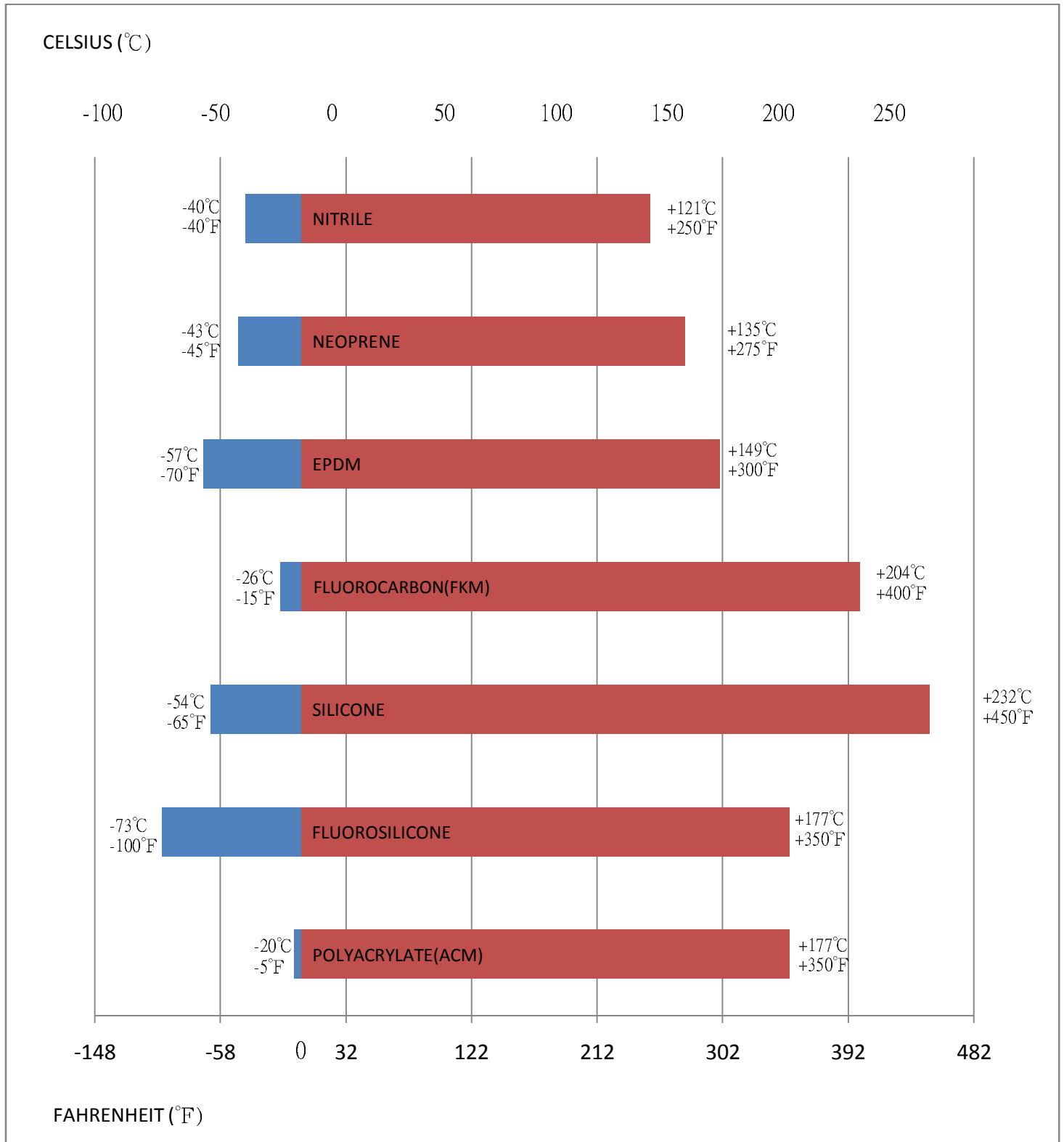
Test Report

一般性合成橡膠應用使用溫度範圍特性

此圖表溫度範圍供一般性應用參考，與實際產品使用可能有些許差異。
至於各項材質使用之最極限特別溫度，此為特殊要求與材質配方不同而有差異。

SERVICE TEMPERATURE RANGE CHART

This service temperature range is for reference only. In actual service environment, some specific compounds may not reach the maximum temperature as indicated in this chart. However, high temperature may be attained if exposure is short period or intermittent.



橡膠性質比較表 – RUBBER MATERIAL PROPERTIES

◎ Excellent ○ Good □ Fair ◇ Limited ▼ Poor

	NR	SBR	BR	EPDM	CR	NBR	ACM	SI	FKM
拉力 Tensile Strength	◎	○	◇	◇	○	○	▼	▼	○
伸長度 Elongation	◎	○	◇	○	○	○	▼	◎	▼
彈性 Rebound Resistance	◎	◇	◎	○	◎	○	◇	◇	◇
撕斷力 Tear Resistance	◎	◇	◇	◇	○	○	▼	▼	◇
耐磨度 Abrasion Resistance	◎	◎	◎	○	○	◎	◇	▼	◇
撞擊力 Impact Strength Resistance	◎	◎	○	○	◎	○	▼	▼	◇
氣密性 Air Impermeability Resistance	◇	◇	◇	◇	◎	○	◇	▼	○
耐氧化 Oxygen Resistance	◇	◇	◇	○	○	◇	○	◎	◎
耐臭氧 Ozone Resistance	▼	▼	▼	◎	○	▼	○	◎	◎
耐候性 Weathering Resistance	◇	◇	◇	◎	○	◇	○	◎	◎
耐日光性 Sunlight Resistance	▼	◇	◇	◎	○	▼	○	◎	◎
耐熱性 Heat Resistance	▼	◇	◇	◎	○	◇	○	◎	◎
耐低溫 Low Temperature Resistance	○	◇	○	○	◇	◇	▼	◎	○
耐油與汽油 Oil and Fuel Resistance	▼	▼	▼	▼	□	○	○	◇	◎
氧化溶劑 Oxygenated Solvent Resistance	○	○	○	◎	▼	▼	▼	◇	▼
耐水性 Water Resistance	◎	○	◎	◎	○	○	▼	○	○

材質特性分析與應用 – GENERAL PROPERTIES OF MOST USED ELASTOMERS

ASTM D1481 DESIGNATION	NITRILE	NEOPRENE	ETHYLENE PROPYLENE TEREPOLYMER	POLY- ACRYLATE	SILICONE	FLUORO SILICONE	FLUORO- CARBON
	NBR	CR	EPDM	ACM	MQ. PMQ	FVMQ.	FKM
ASTM D2000/SAE J200 TYPE CLASS	BF.BG. BK.CH	BC. BE	AA.BA CA	DF DH	VMQ.PVMQ FC.FE.GE	FK	HK
HARDNESS SHORE A (硬度範圍)	40~90	30~90	30~90	40~85	30~85	60~80	60~95
TENSILE STRENGTH MAX, REINF(PSI)(拉力強度)	4000	4000	3000	2500	1200	1200	2500
ELONGATION MAX, REINF(%)(延伸)	600	600	600	400	700	400	300
SPECIFIC GRAVITY(比重)	1	1.24	0.86	1.09	0.98	0.98	1.85
BRITTLEPOINT(°F.°C) (啞化點)	-40°F -40°C	-80°F -62°C	-90°F -68°C	-40°F -40°C	-90~-180°F -68~-118°C	-85°F -65°C	-40°F -40°C
COMPRESSION SET (壓縮)	A-B	A-B	A-B	B	A-C	B	A-B
RESILIENCE AT 73°F (彈性)	B	A-B	B	C	A-D	C	C
ELECTRICAL PROPERTIES (靜電特性)	C-D	A	A	C	A-B	A	B
ADHESION TO METAL (金屬黏著性)	A-B	A-B	B-C	B	B	C	C
RESISTANCE TO (抗耐性比較)							
ABRASION(抗磨耗)	A	A	B	C	C-D	D	B
TEARING(抗撕裂)	B	B-C	C	C-D	C-D	D	B-C
FLAME(抗燃燒)	D	A-B	D	D	A-C	A	A
OZONE(抗臭氧)	C-D	A	A	A	A	A	A
WEATHER(耐候性)	D	A	A	A	A	A	A
OXIDATION(抗氧化)	B	A	A	B	A	A	A
WATER(耐水性)	A	B	A	D	A-B	A	A
STEAM(耐蒸氣)	B-C	C	A-B	E	B-C	B-C	B
ACID(DILUTED)(耐弱酸)	B	A	A	C-D	B	A	A
ACID(CONCENTRATED) (耐強酸)	B	A	A	C-D	C	B	A
ALKALIES(DILUTED) (耐弱鹼)	B	A	A	C-D	A	A	A
ALKALIES (CONCENTRATED) (耐強鹼)	B	A	A	C-D	A	B	A
SYNTHETIC LUBRICATION (合成潤滑油)	A-B	D	E	D	E	A	A
HIGHT ANILINE LUB. OIL (高黏稠潤滑油)	A	A	E	A	B	A	A
LOW ANILINE LUB. OIL (低黏稠潤滑油)	A	B	E	A	C	A	A
ANIMAL, VEGETABLE OIL (動,植物油)	B	B	A-B	B	A	A	A
GAS PERMEABILITY (瓦斯,汽油穿透性)	A-B	B	C	B	D	D	A
A=EXCELLENT(優) B=GOOD(好) C=FAIR(普通) D=POOR(少用) E=VERY POOR(非常少用)							

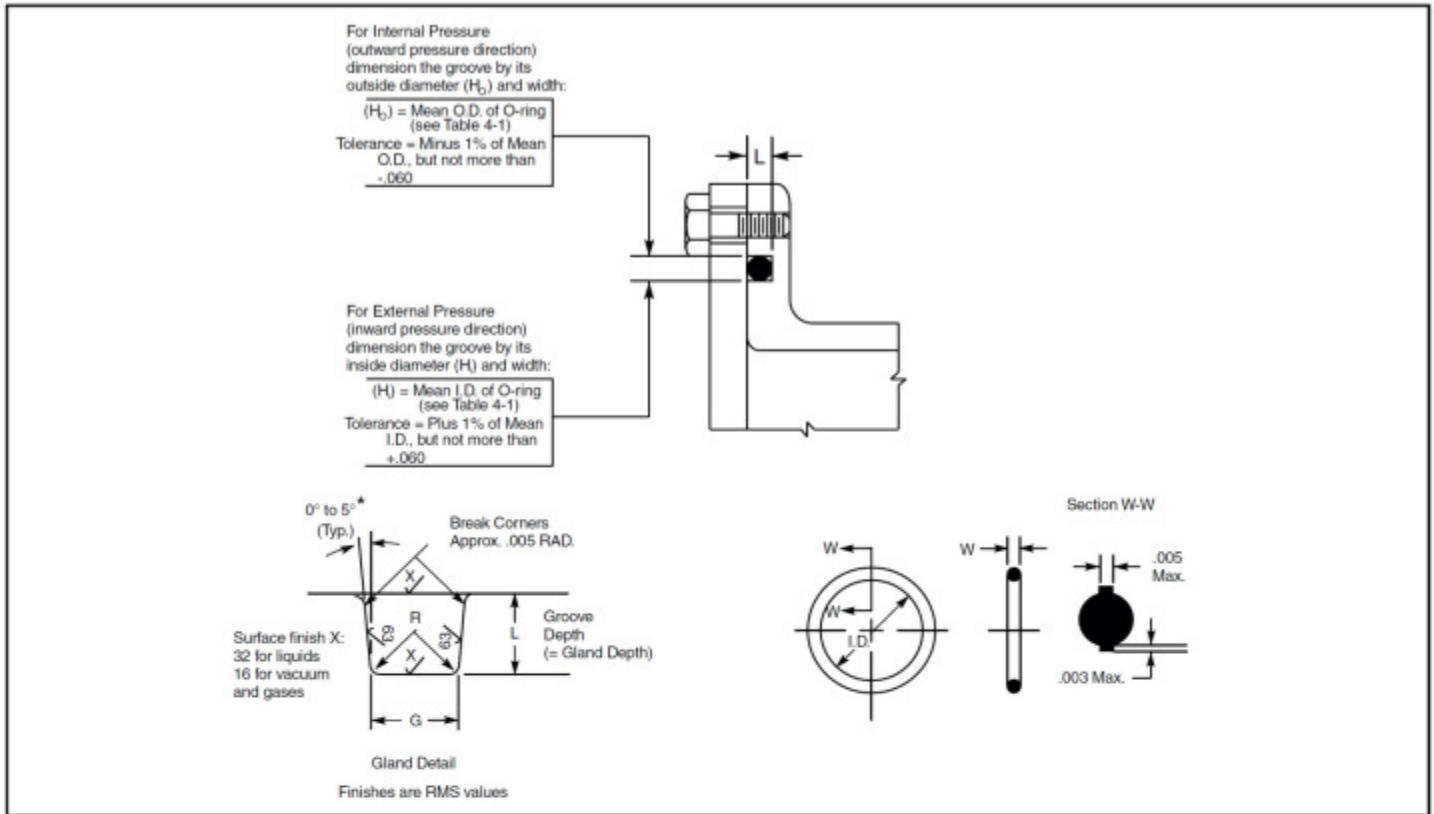
TECHNOLOGY:

For Mores provides elastomer solutions to many application needs. Our expanded portfolio of general-purpose and specialty elastomers cover the chemical processing and automotive industries.

Rubber has a great influence on the ways machinery and industrial operation. Custom rubber materials serve a variety of purposes. For Mores rubber fully understands the importance of our customers' rubber needs. Our team takes full responsibility for product reliability. Technical papers, datasheets, MSDSs and more are available in one place to help you in your search for an elastomer product.

Material	ASTM D1418 Designation	ASTM D2000/ SAE J200 TYPE	Properties	SPEC
NITRILE	NBR	BF, BG, BK, CH	Std. Compound	M2BG714
			ABS	
			Low Temp resistance	
			Gasoline resistance	
			Ozone resistance	
			Abrasion resistance	
			FDA grade	
			High RPM resistance	
			Electrical insulating	
			High/Low Temp. resistance	
			High Temp resistance	
NEOPRENE	CR	BC, BE	Peroxide Curing	
			Std. Compound	
			Low Temp resistance	
ETHYLENE PROPYLENE TERPOLYMER	EPDM	BA, CA, DA	High Strength	
			Std. Compound	
			FDA grade	
			Flame resistance	
POLYACRYLATE	ACM	DF, DH, EH	Peroxide Curing	
			Std. Compound	M2DF708
SILICONE	MQ, PMQ	FC, FE, GE	Std. Compound	
			Oil resistance	
			High Temp resistance	
			High Strength	
FLUOROSILICONE	FVMQ	FK	Std. Compound	
FLUOROCARBON	FKM	HK	Std. Compound	
			FDA grade	
			Low Temp resistance	
			GF grade	
			GLT grade	
			GFLT grade	
Hydrogenated NBR Rubber	HNBR	DH	Std. Compound	
Natural Rubber	NR	AA	Peroxide Curing	
Polyurethane Rubber	PU	BG	Std. Compound	
			Water resistance	
			Oil resistance	
Epichlorohydrin (CO, ECO, GECO)		CH	Std. Compound	
Butyl Rubber (IIR)		AA	Std. Compound	
Styrene-Butadiene Rubber (SBR)		AA, BA	Std. Compound	

O-Ring Design Chart — Face Seal Glands



Design Chart — For O-Ring Face Seal Glands

These dimensions are intended primarily for face type O-ring seals and low temperature applications.

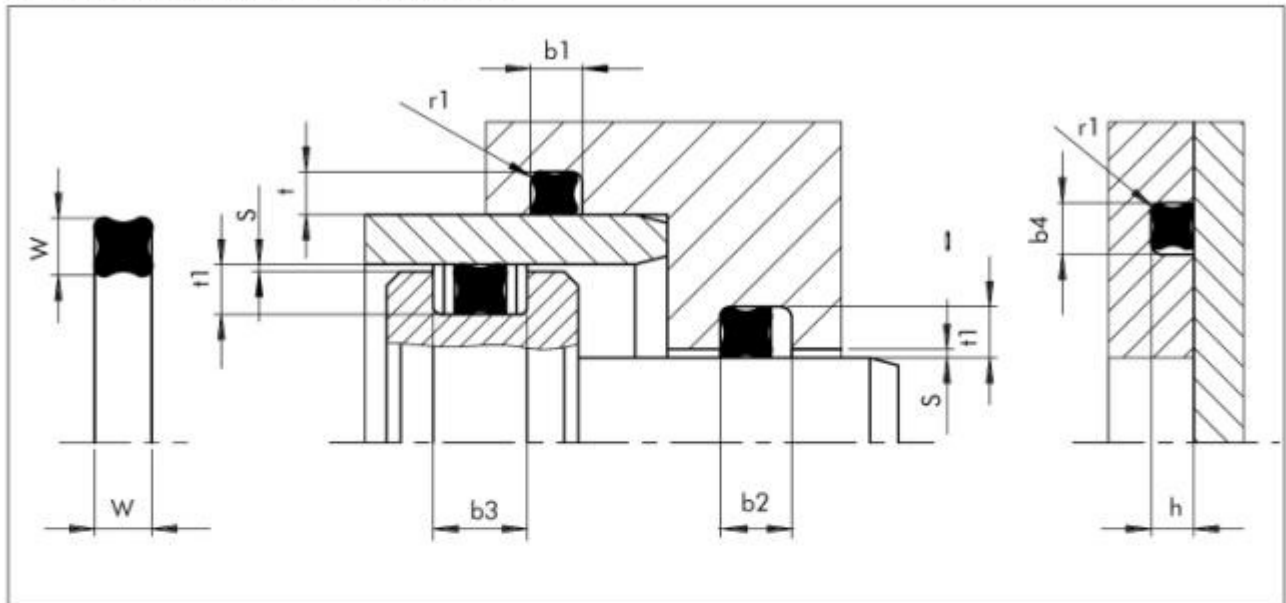
O-Ring Size Parker No. 2	W Cross Section		L Gland Depth	Squeeze		G Groove Width		R Groove Radius
	Nominal	Actual		Actual	%	Liquids	Vacuum and Gases	
004 through 050	1/16	.070 ±.003	.050 to .054	.013 to .023	19 to 32	.101 to .107	.084 to .089	.005 to .015
102 through 178	3/32	.103 ±.003	.074 to .080	.020 to .032	20 to 30	.136 to .142	.120 to .125	.005 to .015
201 through 284	1/8	.139 ±.004	.101 to .107	.028 to .042	20 to 30	.177 to .187	.158 to .164	.010 to .025
309 through 395	3/16	.210 ±.005	.152 to .162	.043 to .063	21 to 30	.270 to .290	.239 to .244	.020 to .035
425 through 475	1/4	.275 ±.006	.201 to .211	.058 to .080	21 to 29	.342 to .362	.309 to .314	.020 to .035
Special	3/8	.375 ±.007	.276 to .286	.082 to .108	22 to 28	.475 to .485	.419 to .424	.030 to .045
Special	1/2	.500 ±.008	.370 to .380	.112 to .138	22 to 27	.638 to .645	.560 to .565	.030 to .045

Design Chart - Design Chart for O-Ring Face Seal Glands

X-RING



Installation Recommendations



Installation drawing

Installation Dimensions

Cord Diameter W	Radial Initial Squeeze *		Groove Dimensions					Radius r ₁	Radial Gap S _{max.}
	Dynamic max. min.	Static max. min.	Groove Depth ** 1)		Groove Width ***				
			Dynamic t ₁ +0.05	Static t/h +0.05	b ₁ , b ₄ +0.2	b ₂ +0.2	b ₃ +0.2		
1.02	<u>0.300</u> 0.115	<u>0.350</u> 0.165	0.80	0.75	1.20	-	-	0.10	0.03
1.27	<u>0.330</u> 0.145	<u>0.430</u> 0.245	1.00	0.90	1.40	-	-	0.10	0.03
1.52	<u>0.350</u> 0.165	<u>0.450</u> 0.265	1.25	1.15	1.70	-	-	0.22	0.04
1.78	<u>0.360</u> 0.175	<u>0.460</u> 0.275	1.50	1.40	2.00	3.40	4.80	0.22	0.05
2.62	<u>0.400</u> 0.215	<u>0.450</u> 0.265	2.30	2.25	3.00	4.40	5.80	0.30	0.08
3.53	<u>0.430</u> 0.205	<u>0.530</u> 0.305	3.20	3.10	4.00	5.40	6.80	0.40	0.08
5.33	<u>0.560</u> 0.250	<u>0.710</u> 0.400	4.90	4.75	6.00	7.70	9.40	0.40	0.10
7.00	<u>0.700</u> 0.350	<u>0.950</u> 0.600	6.40	6.20	8.00	10.50	13.00	0.60	0.10

O-RING STANDARD SIZE(AS-568A)

AS 568A SIZE	NOMINAL SIZE INCHES			STANDARD O-RING INCHES				METRIC O-RING MILLIMETERS			
	I.D.	O.D.	W.	I.D.	±	W.	±	I.D.	±	W.	±
A001	1/32	3/32	1/32	0.029	0.004	0.040	0.003	0.74	0.10	1.02	0.08
A002	3/64	9/64	3/64	0.042	0.004	0.050	0.003	1.07	0.10	1.27	0.08
A003	1/16	3/16	1/16	0.056	0.004	0.060	0.003	1.42	0.10	1.52	0.08
A004	5/64	13/64	1/16	0.070	0.005	0.070	0.003	1.78	0.13	1.78	0.08
A005	3/32	7/32	1/16	0.101	0.005	0.070	0.003	2.57	0.13	1.78	0.08
A006	1/8	1/4	1/16	0.114	0.005	0.070	0.003	2.90	0.13	1.78	0.08
A007	5/32	9/32	1/16	0.145	0.005	0.070	0.003	3.68	0.13	1.78	0.08
A008	3/16	5/16	1/16	0.176	0.005	0.070	0.003	4.47	0.13	1.78	0.08
A009	7/32	11/32	1/16	0.208	0.005	0.070	0.003	5.28	0.13	1.78	0.08
A010	1/4	3/8	1/16	0.239	0.005	0.070	0.003	6.07	0.13	1.78	0.08
A011	5/16	7/16	1/16	0.301	0.005	0.070	0.003	7.65	0.13	1.78	0.08
A012	3/8	1/2	1/16	0.364	0.005	0.070	0.003	9.25	0.13	1.78	0.08
A013	7/16	9/16	1/16	0.426	0.005	0.070	0.003	10.82	0.13	1.78	0.08
A014	1/2	5/8	1/16	0.489	0.005	0.070	0.003	12.42	0.13	1.78	0.08
A015	9/16	11/16	1/16	0.551	0.007	0.070	0.003	14.00	0.18	1.78	0.08
A016	5/8	3/4	1/16	0.614	0.009	0.070	0.003	15.60	0.23	1.78	0.08
A017	11/16	13/16	1/16	0.676	0.009	0.070	0.003	17.17	0.23	1.78	0.08
A018	3/4	7/8	1/16	0.739	0.009	0.070	0.003	18.77	0.23	1.78	0.08
A019	13/16	15/16	1/16	0.801	0.009	0.070	0.003	20.35	0.23	1.78	0.08
A020	7/8	1	1/16	0.864	0.009	0.070	0.003	21.95	0.23	1.78	0.08
A021	15/16	1 1/16	1/16	0.926	0.009	0.070	0.003	23.52	0.23	1.78	0.08
A022	1	1/8	1/16	0.989	0.010	0.070	0.003	25.12	0.25	1.78	0.08
A023	1 1/16	1 3/16	1/16	1.051	0.010	0.070	0.003	26.70	0.25	1.78	0.08
A024	1 1/8	1 1/4	1/16	1.114	0.010	0.070	0.003	28.30	0.25	1.78	0.08
A025	1 3/16	1 5/16	1/16	1.176	0.011	0.070	0.003	29.87	0.28	1.78	0.08
A026	1 1/4	1 3/8	1/16	1.239	0.011	0.070	0.003	31.47	0.28	1.78	0.08
A027	1 5/16	1 7/16	1/16	1.301	0.011	0.070	0.003	33.05	0.28	1.78	0.08
A028	1 3/8	1 1/2	1/16	1.364	0.013	0.070	0.003	34.65	0.33	1.78	0.08
A029	1 1/2	1 5/8	1/16	1.489	0.013	0.070	0.003	37.82	0.33	1.78	0.08
A030	1 5/8	1 3/4	1/16	1.614	0.013	0.070	0.003	41.00	0.33	1.78	0.08
A031	1 3/4	1 7/8	1/16	1.739	0.015	0.070	0.003	44.17	0.38	1.78	0.08
A032	1 7/8	2	1/16	1.864	0.015	0.070	0.003	47.35	0.38	1.78	0.08
A033	2	2 1/8	1/16	1.989	0.018	0.070	0.003	50.52	0.46	1.78	0.08
A034	2 1/8	2 1/4	1/16	2.114	0.018	0.070	0.003	53.70	0.46	1.78	0.08
A035	2 1/4	2 3/8	1/16	2.239	0.018	0.070	0.003	56.87	0.46	1.78	0.08
A036	2 3/8	2 1/2	1/16	2.364	0.018	0.070	0.003	60.05	0.46	1.78	0.08
A037	2 1/2	2 5/8	1/16	2.489	0.018	0.070	0.003	63.22	0.46	1.78	0.08
A038	2 5/8	2 3/4	1/16	2.614	0.020	0.070	0.003	66.40	0.51	1.78	0.08
A039	2 3/4	2 7/8	1/16	2.739	0.020	0.070	0.003	69.57	0.51	1.78	0.08
A040	2 7/8	3	1/16	2.864	0.020	0.070	0.003	72.75	0.51	1.78	0.08
A041	3	3 1/8	1/16	2.989	0.024	0.070	0.003	75.92	0.61	1.78	0.08
A042	3 1/4	3 3/8	1/16	3.239	0.024	0.070	0.003	82.27	0.61	1.78	0.08
A043	3 1/2	3 5/8	1/16	3.489	0.024	0.070	0.003	88.62	0.61	1.78	0.08
A044	3 3/4	3 7/8	1/16	3.739	0.027	0.070	0.003	94.97	0.69	1.78	0.08
A045	4	4 1/8	1/16	3.989	0.027	0.070	0.003	101.32	0.69	1.78	0.08

O-RING STANDARD SIZE(AS-568A)

AS 568A SIZE	NOMINAL SIZE INCHES			STANDARD O-RING INCHES				METRIC O-RING MILLIMETERS			
	I.D.	O.D.	W.	I.D.	±	W.	±	I.D.	±	W.	±
A046	4 1/4	4 3/8	1/16	4.239	0.030	0.070	0.003	107.67	0.76	1.78	0.08
A047	4 1/2	4 3/8	1/16	4.489	0.030	0.070	0.003	114.02	0.76	1.78	0.08
A048	4 3/4	4 7/8	1/16	4.739	0.030	0.070	0.003	120.37	0.76	1.78	0.08
A049	5	5 1/8	1/16	4.989	0.037	0.070	0.003	126.72	0.94	1.78	0.08
A050	5 1/4	5 3/8	1/16	5.239	0.037	0.070	0.003	133.07	0.94	1.78	0.08
A102	1/16	1/4	3/32	0.049	0.005	0.103	0.003	1.24	0.13	2.62	0.08
A103	3/32	9/32	3/32	0.081	0.005	0.103	0.003	2.06	0.13	2.62	0.08
A104	1/8	5/16	3/32	0.112	0.005	0.103	0.003	2.84	0.13	2.62	0.08
A105	5/32	11/32	3/32	0.143	0.005	0.103	0.003	3.63	0.13	2.62	0.08
A106	3/16	3/8	3/32	0.174	0.005	0.103	0.003	4.42	0.13	2.62	0.08
A107	7/32	13/32	3/32	0.206	0.005	0.103	0.003	5.23	0.13	2.62	0.08
A108	1/4	7/16	3/32	0.237	0.005	0.103	0.003	6.02	0.13	2.62	0.08
A109	5/16	1/2	3/32	0.299	0.005	0.103	0.003	7.59	0.13	2.62	0.08
A110	3/8	9/16	3/32	0.362	0.005	0.103	0.003	9.19	0.13	2.62	0.08
A111	7/16	5/8	3/32	0.424	0.005	0.103	0.003	10.77	0.13	2.62	0.08
A112	1/2	11/16	3/32	0.487	0.005	0.103	0.003	12.37	0.13	2.62	0.08
A113	9/16	3/4	3/32	0.549	0.007	0.103	0.003	13.94	0.18	2.62	0.08
A114	5/8	13/16	3/32	0.612	0.009	0.103	0.003	15.54	0.23	2.62	0.08
A115	11/16	7/8	3/32	0.674	0.009	0.103	0.003	17.12	0.23	2.62	0.08
A116	3/4	15/16	3/32	0.737	0.009	0.103	0.003	18.72	0.23	2.62	0.08
A117	13/16	1	3/32	0.799	0.010	0.103	0.003	20.29	0.25	2.62	0.08
A118	7/8	1 1/16	3/32	0.862	0.010	0.103	0.003	21.89	0.25	2.62	0.08
A119	15/16	1 1/8	3/32	0.924	0.010	0.103	0.003	23.47	0.25	2.62	0.08
A120	1	1 3/16	3/32	0.987	0.010	0.103	0.003	25.07	0.25	2.62	0.08
A121	1 1/16	1 1/4	3/32	1.049	0.010	0.103	0.003	26.64	0.25	2.62	0.08
A122	1 1/8	1 5/16	3/32	1.112	0.010	0.103	0.003	28.24	0.25	2.62	0.08
A123	1 3/16	1 3/8	3/32	1.174	0.012	0.103	0.003	29.82	0.30	2.62	0.08
A124	1 1/4	1 7/16	3/32	1.237	0.012	0.103	0.003	31.42	0.30	2.62	0.08
A125	1 5/16	1 1/2	3/32	1.299	0.012	0.103	0.003	32.99	0.30	2.62	0.08
A126	1 3/8	1 9/16	3/32	1.362	0.012	0.103	0.003	34.59	0.30	2.62	0.08
A127	1 7/16	1 5/8	3/32	1.424	0.012	0.103	0.003	36.17	0.30	2.62	0.08
A128	1 1/2	1 11/16	3/32	1.487	0.012	0.103	0.003	37.77	0.30	2.62	0.08
A129	1 9/16	1 3/4	3/32	1.549	0.015	0.103	0.003	39.34	0.38	2.62	0.08
A130	1 5/8	1 13/16	3/32	1.612	0.015	0.103	0.003	40.94	0.38	2.62	0.08
A131	1 11/16	1 7/8	3/32	1.674	0.015	0.103	0.003	42.52	0.38	2.62	0.08
A132	1 3/4	1 15/16	3/32	1.737	0.015	0.103	0.003	44.12	0.38	2.62	0.08
A133	1 13/16	2	3/32	1.799	0.015	0.103	0.003	45.69	0.38	2.62	0.08
A134	1 7/8	2 1/16	3/32	1.862	0.015	0.103	0.003	47.29	0.38	2.62	0.08
A135	1 15/16	2 1/8	3/32	1.925	0.017	0.103	0.003	48.90	0.43	2.62	0.08
A136	2	2 3/16	3/32	1.987	0.017	0.103	0.003	50.47	0.43	2.62	0.08
A137	2 1/16	2 1/4	3/32	2.050	0.017	0.103	0.003	52.07	0.43	2.62	0.08
A138	2 1/8	2 5/16	3/32	2.112	0.017	0.103	0.003	53.64	0.43	2.62	0.08
A139	2 3/16	2 3/8	3/32	2.175	0.017	0.103	0.003	55.25	0.43	2.62	0.08
A140	2 1/4	2 7/16	3/32	2.237	0.017	0.103	0.003	56.82	0.43	2.62	0.08
A141	2 5/16	2 1/2	3/32	2.300	0.020	0.103	0.003	58.42	0.51	2.62	0.08

O-RING STANDARD SIZE(AS-568A)

AS 568A SIZE	NOMINAL SIZE INCHES			STANDARD O-RING INCHES				METRIC O-RING MILLIMETERS			
	I.D.	O.D.	W.	I.D.	±	W.	±	I.D.	±	W.	±
A142	2 3/8	2 9/16	3/32	2.362	0.020	0.103	0.003	59.99	0.51	2.62	0.08
A143	2 7/16	2 5/8	3/32	2.425	0.020	0.103	0.003	61.60	0.51	2.62	0.08
A144	2 1/2	2 11/16	3/32	2.487	0.020	0.103	0.003	63.17	0.51	2.62	0.08
A145	2 9/16	2 3/4	3/32	2.550	0.020	0.103	0.003	64.77	0.51	2.62	0.08
A146	2 5/8	2 13/16	3/32	2.612	0.020	0.103	0.003	66.34	0.51	2.62	0.08
A147	2 11/16	2 7/8	3/32	2.675	0.022	0.103	0.003	67.95	0.56	2.62	0.08
A148	2 3/4	2 15/16	3/32	2.737	0.022	0.103	0.003	69.52	0.56	2.62	0.08
A149	2 13/16	3	3/32	2.800	0.022	0.103	0.003	71.12	0.56	2.62	0.08
A150	2 7/8	3 1/16	3/32	2.862	0.022	0.103	0.003	72.69	0.56	2.62	0.08
A151	3	3 3/16	3/32	2.987	0.024	0.103	0.003	75.87	0.61	2.62	0.08
A152	3 1/4	3 7/16	3/32	3.237	0.024	0.103	0.003	82.22	0.61	2.62	0.08
A153	3 1/2	3 11/16	3/32	3.487	0.024	0.103	0.003	88.57	0.61	2.62	0.08
A154	3 3/4	3 15/16	3/32	3.737	0.028	0.103	0.003	94.92	0.71	2.62	0.08
A155	4	4 3/16	3/32	3.987	0.028	0.103	0.003	101.27	0.71	2.62	0.08
A156	4 1/4	4 7/16	3/32	4.237	0.030	0.103	0.003	107.62	0.76	2.62	0.08
A157	4 1/2	4 11/16	3/32	4.487	0.030	0.103	0.003	113.97	0.76	2.62	0.08
A158	4 3/4	4 15/16	3/32	4.737	0.030	0.103	0.003	120.32	0.76	2.62	0.08
A159	5	5 3/16	3/32	4.987	0.035	0.103	0.003	126.67	0.89	2.62	0.08
A160	5 1/4	5 7/16	3/32	5.237	0.035	0.103	0.003	133.02	0.89	2.62	0.08
A161	5 1/2	5 11/16	3/32	5.487	0.035	0.103	0.003	139.37	0.89	2.62	0.08
A162	5 3/4	5 15/16	3/32	5.737	0.035	0.103	0.003	145.72	0.89	2.62	0.08
A163	6	6 3/16	3/32	5.987	0.035	0.103	0.003	152.07	0.89	2.62	0.08
A164	6 1/4	6 7/16	3/32	6.237	0.040	0.103	0.003	158.42	1.02	2.62	0.08
A165	6 1/2	6 11/16	3/32	6.487	0.040	0.103	0.003	164.77	1.02	2.62	0.08
A166	6 3/4	6 15/16	3/32	6.737	0.040	0.103	0.003	171.12	1.02	2.62	0.08
A167	7	7 3/16	3/32	6.987	0.040	0.103	0.003	177.47	1.02	2.62	0.08
A168	7 1/4	7 7/16	3/32	7.237	0.045	0.103	0.003	183.82	1.14	2.62	0.08
A169	7 1/2	7 11/16	3/32	7.487	0.045	0.103	0.003	190.17	1.14	2.62	0.08
A170	7 3/4	7 15/16	3/32	7.737	0.045	0.103	0.003	196.52	1.14	2.62	0.08
A171	8	8 3/16	3/32	7.987	0.045	0.103	0.003	202.87	1.14	2.62	0.08
A172	8 1/4	8 7/16	3/32	8.237	0.050	0.103	0.003	209.22	1.27	2.62	0.08
A173	8 1/2	8 11/16	3/32	8.487	0.050	0.103	0.003	215.57	1.27	2.62	0.08
A174	8 3/4	8 15/16	3/32	8.737	0.050	0.103	0.003	221.92	1.27	2.62	0.08
A175	9	9 3/16	3/32	8.987	0.050	0.103	0.003	228.27	1.27	2.62	0.08
A176	9 1/4	9 7/16	3/32	9.237	0.055	0.103	0.003	234.62	1.40	2.62	0.08
A177	9 1/2	9 11/16	3/32	9.487	0.055	0.103	0.003	240.97	1.40	2.62	0.08
A178	9 3/4	9 15/16	3/32	9.737	0.055	0.103	0.003	247.32	1.40	2.62	0.08
A201	3/16	7/16	1/8	0.171	0.005	0.139	0.004	4.34	0.13	3.53	0.10
A202	1/4	1/2	1/8	0.234	0.005	0.139	0.004	5.94	0.13	3.53	0.10
A203	5/16	9/16	1/8	0.296	0.005	0.139	0.004	7.52	0.13	3.53	0.10
A204	3/8	5/8	1/8	0.359	0.005	0.139	0.004	9.12	0.13	3.53	0.10
A205	7/16	11/16	1/8	0.421	0.005	0.139	0.004	10.69	0.13	3.53	0.10
A206	1/2	3/4	1/8	0.484	0.005	0.139	0.004	12.29	0.13	3.53	0.10
A207	9/16	13/16	1/8	0.546	0.007	0.139	0.004	13.87	0.18	3.53	0.10
A208	5/8	7/8	1/8	0.609	0.009	0.139	0.004	15.47	0.23	3.53	0.10

O-RING STANDARD SIZE(AS-568A)

AS 568A SIZE	NOMINAL SIZE INCHES			STANDARD O-RING INCHES				METRIC O-RING MILLIMETERS			
	I.D.	O.D.	W.	I.D.	±	W.	±	I.D.	±	W.	±
A209	11/16	15/16	1/8	0.671	0.009	0.139	0.004	17.04	0.23	3.53	0.10
A210	3/4	1	1/8	0.734	0.010	0.139	0.004	18.64	0.25	3.53	0.10
A211	13/16	1 1/16	1/8	0.796	0.010	0.139	0.004	20.22	0.25	3.53	0.10
A212	7/8	1 1/8	1/8	0.859	0.010	0.139	0.004	21.82	0.25	3.53	0.10
A213	15/16	1 3/16	1/8	0.921	0.010	0.139	0.004	23.39	0.25	3.53	0.10
A214	1	1 1/4	1/8	0.984	0.010	0.139	0.004	24.99	0.25	3.53	0.10
A215	1 1/16	1 5/16	1/8	1.046	0.010	0.139	0.004	26.57	0.25	3.53	0.10
A216	1 1/8	1 3/8	1/8	1.109	0.012	0.139	0.004	28.17	0.30	3.53	0.10
A217	1 3/16	1 7/16	1/8	1.171	0.012	0.139	0.004	29.74	0.30	3.53	0.10
A218	1 1/4	1 1/2	1/8	1.234	0.012	0.139	0.004	31.34	0.30	3.53	0.10
A219	1 5/16	1 9/16	1/8	1.296	0.012	0.139	0.004	32.92	0.30	3.53	0.10
A220	1 3/8	1 5/8	1/8	1.359	0.012	0.139	0.004	34.52	0.30	3.53	0.10
A221	1 7/16	1 11/16	1/8	1.421	0.012	0.139	0.004	36.09	0.30	3.53	0.10
A222	1 1/2	1 3/4	1/8	1.484	0.015	0.139	0.004	37.69	0.38	3.53	0.10
A223	1 5/8	1 7/8	1/8	1.609	0.015	0.139	0.004	40.87	0.38	3.53	0.10
A224	1 3/4	2	1/8	1.734	0.015	0.139	0.004	44.04	0.38	3.53	0.10
A225	1 7/8	2 1/8	1/8	1.859	0.018	0.139	0.004	47.22	0.46	3.53	0.10
A226	2	2 1/4	1/8	1.984	0.018	0.139	0.004	50.39	0.46	3.53	0.10
A227	2 1/16	2 3/8	1/8	2.109	0.018	0.139	0.004	53.57	0.46	3.53	0.10
A228	2 1/4	2 1/2	1/8	2.234	0.020	0.139	0.004	56.74	0.51	3.53	0.10
A229	2 3/8	2 5/8	1/8	2.359	0.020	0.139	0.004	59.92	0.51	3.53	0.10
A230	2 1/2	2 3/4	1/8	2.484	0.020	0.139	0.004	63.09	0.51	3.53	0.10
A231	2 5/8	2 7/8	1/8	2.609	0.020	0.139	0.004	66.27	0.51	3.53	0.10
A232	2 3/4	3	1/8	2.734	0.024	0.139	0.004	69.44	0.61	3.53	0.10
A233	2 7/8	3 1/8	1/8	2.859	0.024	0.139	0.004	72.62	0.61	3.53	0.10
A234	3	3 1/4	1/8	2.984	0.024	0.139	0.004	75.79	0.61	3.53	0.10
A235	3 1/8	3 3/8	1/8	3.109	0.024	0.139	0.004	78.97	0.61	3.53	0.10
A236	3 1/4	3 1/2	1/8	3.234	0.024	0.139	0.004	82.14	0.61	3.53	0.10
A237	3 3/8	3 5/8	1/8	3.359	0.024	0.139	0.004	85.32	0.61	3.53	0.10
A238	3 1/2	3 3/4	1/8	3.484	0.024	0.139	0.004	88.49	0.61	3.53	0.10
A239	3 5/8	3 7/8	1/8	3.609	0.028	0.139	0.004	91.67	0.71	3.53	0.10
A240	3 3/4	4	1/8	3.734	0.028	0.139	0.004	94.84	0.71	3.53	0.10
A241	3 7/8	4 1/8	1/8	3.859	0.028	0.139	0.004	98.02	0.71	3.53	0.10
A242	4	4 1/4	1/8	3.984	0.028	0.139	0.004	101.19	0.71	3.53	0.10
A243	4 1/8	4 3/8	1/8	4.109	0.028	0.139	0.004	104.37	0.71	3.53	0.10
A244	4 1/4	4 1/2	1/8	4.234	0.030	0.139	0.004	107.54	0.76	3.53	0.10
A245	4 3/8	4 5/8	1/8	4.359	0.030	0.139	0.004	110.72	0.76	3.53	0.10
A246	4 1/2	4 3/4	1/8	4.484	0.030	0.139	0.004	113.89	0.76	3.53	0.10
A247	4 5/8	4 7/8	1/8	4.609	0.030	0.139	0.004	117.07	0.76	3.53	0.10
A248	4 3/4	5	1/8	4.734	0.030	0.139	0.004	120.24	0.76	3.53	0.10
A249	4 7/8	5 1/8	1/8	4.859	0.035	0.139	0.004	123.42	0.89	3.53	0.10
A250	5	5 1/4	1/8	4.984	0.035	0.139	0.004	126.59	0.89	3.53	0.10
A251	5 1/8	5 3/8	1/8	5.109	0.035	0.139	0.004	129.77	0.89	3.53	0.10
A252	5 1/4	5 1/2	1/8	5.234	0.035	0.139	0.004	132.94	0.89	3.53	0.10
A253	5 3/8	5 5/8	1/8	5.359	0.035	0.139	0.004	136.12	0.89	3.53	0.10

O-RING STANDARD SIZE(AS-568A)

AS 568A SIZE	NOMINAL SIZE INCHES			STANDARD O-RING INCHES				METRIC O-RING MILLIMETERS			
	I.D.	O.D.	W.	I.D.	±	W.	±	I.D.	±	W.	±
A254	5 1/2	5 3/4	1/8	5.484	0.035	0.139	0.004	139.29	0.89	3.53	0.10
A255	5 5/8	5 7/8	1/8	5.609	0.035	0.139	0.004	142.47	0.89	3.53	0.10
A256	5 3/4	6	1/8	5.734	0.035	0.139	0.004	145.64	0.89	3.53	0.10
A257	5 7/8	6 1/8	1/8	5.859	0.035	0.139	0.004	148.82	0.89	3.53	0.10
A258	6	6 1/4	1/8	5.984	0.035	0.139	0.004	151.99	0.89	3.53	0.10
A259	6 1/4	6 1/2	1/8	6.234	0.040	0.139	0.004	158.34	1.02	3.53	0.10
A260	6 1/2	6 3/4	1/8	6.484	0.040	0.139	0.004	164.69	1.02	3.53	0.10
A261	6 3/4	7	1/8	6.734	0.040	0.139	0.004	171.04	1.02	3.53	0.10
A262	7	7 1/4	1/8	6.984	0.040	0.139	0.004	177.39	1.02	3.53	0.10
A263	7 1/4	7 1/2	1/8	7.234	0.045	0.139	0.004	183.74	1.14	3.53	0.10
A264	7 1/2	7 3/4	1/8	7.484	0.045	0.139	0.004	190.09	1.14	3.53	0.10
A265	7 3/4	8	1/8	7.734	0.045	0.139	0.004	196.44	1.14	3.53	0.10
A266	8	8 1/4	1/8	7.984	0.045	0.139	0.004	202.79	1.14	3.53	0.10
A267	8 1/4	8 1/2	1/8	8.234	0.050	0.139	0.004	209.14	1.27	3.53	0.10
A268	8 1/2	8 3/4	1/8	8.484	0.050	0.139	0.004	215.49	1.27	3.53	0.10
A269	8 3/4	9	1/8	8.734	0.050	0.139	0.004	221.84	1.27	3.53	0.10
A270	9	9 1/4	1/8	8.984	0.050	0.139	0.004	228.19	1.27	3.53	0.10
A271	9 1/4	9 1/2	1/8	9.234	0.055	0.139	0.004	234.54	1.40	3.53	0.10
A272	9 1/2	9 3/4	1/8	9.484	0.055	0.139	0.004	240.89	1.40	3.53	0.10
A273	9 3/4	10	1/8	9.734	0.055	0.139	0.004	247.24	1.40	3.53	0.10
A274	10	10 1/4	1/8	9.984	0.055	0.139	0.004	253.59	1.40	3.53	0.10
A275	10 1/2	10 3/4	1/8	10.484	0.055	0.139	0.004	266.29	1.40	3.53	0.10
A276	11	11 1/4	1/8	10.984	0.065	0.139	0.004	278.99	1.65	3.53	0.10
A277	11 1/2	11 3/4	1/8	11.484	0.065	0.139	0.004	291.69	1.65	3.53	0.10
A278	12	12 1/4	1/8	11.984	0.065	0.139	0.004	304.39	1.65	3.53	0.10
A279	13	13 1/4	1/8	12.984	0.065	0.139	0.004	329.79	1.65	3.53	0.10
A280	14	14 1/4	1/8	13.984	0.065	0.139	0.004	355.19	1.65	3.53	0.10
A281	15	15 1/4	1/8	14.984	0.065	0.139	0.004	380.59	1.65	3.53	0.10
A282	16	16 1/4	1/8	15.955	0.075	0.139	0.004	405.26	1.91	3.53	0.10
A283	17	17 1/4	1/8	16.955	0.080	0.139	0.004	430.66	2.03	3.53	0.10
A284	18	18 1/4	1/8	17.955	0.085	0.139	0.004	456.06	2.16	3.53	0.10
A309	7/16	13/16	3/16	0.412	0.005	0.210	0.005	10.46	0.13	5.33	0.13
A310	1/2	7/8	3/16	0.475	0.005	0.210	0.005	12.07	0.13	5.33	0.13
A311	9/16	15/16	3/16	0.537	0.007	0.210	0.005	13.64	0.18	5.33	0.13
A312	5/8	1	3/16	0.600	0.009	0.210	0.005	15.24	0.23	5.33	0.13
A313	11/16	1 1/16	3/16	0.662	0.009	0.210	0.005	16.81	0.23	5.33	0.13
A314	3/4	1 1/8	3/16	0.725	0.010	0.210	0.005	18.42	0.25	5.33	0.13
A315	13/16	1 3/16	3/16	0.787	0.010	0.210	0.005	19.99	0.25	5.33	0.13
A316	7/8	1 1/4	3/16	0.850	0.010	0.210	0.005	21.59	0.25	5.33	0.13
A317	15/16	1 5/16	3/16	0.912	0.010	0.210	0.005	23.16	0.25	5.33	0.13
A318	1	1 3/8	3/16	0.975	0.010	0.210	0.005	24.77	0.25	5.33	0.13
A319	1 1/16	1 7/16	3/16	1.037	0.010	0.210	0.005	26.34	0.25	5.33	0.13
A320	1 1/8	1 1/2	3/16	1.100	0.012	0.210	0.005	27.94	0.30	5.33	0.13
A321	1 3/16	1 9/16	3/16	1.162	0.012	0.210	0.005	29.51	0.30	5.33	0.13
A322	1 1/4	1 5/8	3/16	1.225	0.012	0.210	0.005	31.12	0.30	5.33	0.13

O-RING STANDARD SIZE(AS-568A)

AS 568A SIZE	NOMINAL SIZE INCHES			STANDARD O-RING INCHES				METRIC O-RING MILLIMETERS			
	I.D.	O.D.	W.	I.D.	±	W.	±	I.D.	±	W.	±
A323	1 5/16	1 11/16	3/16	1.287	0.012	0.210	0.005	32.69	0.30	5.33	0.13
A324	1 3/8	1 3/4	3/16	1.350	0.012	0.210	0.005	34.29	0.30	5.33	0.13
A325	1 1/2	1 7/8	3/16	1.475	0.015	0.210	0.005	37.47	0.38	5.33	0.13
A326	1 5/8	2	3/16	1.600	0.015	0.210	0.005	40.64	0.38	5.33	0.13
A327	1 3/4	2 1/8	3/16	1.725	0.015	0.210	0.005	43.82	0.38	5.33	0.13
A328	1 7/8	2 1/4	3/16	1.850	0.015	0.210	0.005	46.99	0.38	5.33	0.13
A329	2	2 3/8	3/16	1.975	0.018	0.210	0.005	50.17	0.46	5.33	0.13
A330	2 1/8	2 1/2	3/16	2.100	0.018	0.210	0.005	53.34	0.46	5.33	0.13
A331	2 1/4	2 5/8	3/16	2.225	0.018	0.210	0.005	56.52	0.46	5.33	0.13
A332	2 3/8	2 3/4	3/16	2.350	0.018	0.210	0.005	59.69	0.46	5.33	0.13
A333	2 1/2	2 7/8	3/16	2.475	0.020	0.210	0.005	62.87	0.51	5.33	0.13
A334	2 5/8	3	3/16	2.600	0.020	0.210	0.005	66.04	0.51	5.33	0.13
A335	2 3/4	3 1/8	3/16	2.725	0.020	0.210	0.005	69.22	0.51	5.33	0.13
A336	2 7/8	3 1/4	3/16	2.850	0.020	0.210	0.005	72.39	0.51	5.33	0.13
A337	3	3 3/8	3/16	2.975	0.024	0.210	0.005	75.57	0.61	5.33	0.13
A338	3 1/8	3 1/2	3/16	3.100	0.024	0.210	0.005	78.74	0.61	5.33	0.13
A339	3 1/4	3 5/8	3/16	3.225	0.024	0.210	0.005	81.92	0.61	5.33	0.13
A340	3 3/8	3 3/4	3/16	3.350	0.024	0.210	0.005	85.09	0.61	5.33	0.13
A341	3 1/2	3 7/8	3/16	3.475	0.024	0.210	0.005	88.27	0.61	5.33	0.13
A342	3 5/8	4	3/16	3.600	0.028	0.210	0.005	91.44	0.71	5.33	0.13
A343	3 3/4	4 1/8	3/16	3.725	0.028	0.210	0.005	94.62	0.71	5.33	0.13
A344	3 7/8	4 1/4	3/16	3.850	0.028	0.210	0.005	97.79	0.71	5.33	0.13
A345	4	4 3/8	3/16	3.975	0.028	0.210	0.005	100.97	0.71	5.33	0.13
A346	4 1/8	4 1/2	3/16	4.100	0.028	0.210	0.005	104.14	0.71	5.33	0.13
A347	4 1/4	4 5/8	3/16	4.225	0.030	0.210	0.005	107.32	0.76	5.33	0.13
A348	4 3/8	4 3/4	3/16	4.350	0.030	0.210	0.005	110.49	0.76	5.33	0.13
A349	4 1/2	4 7/8	3/16	4.475	0.030	0.210	0.005	113.67	0.76	5.33	0.13
A350	4 5/8	5	3/16	4.600	0.030	0.210	0.005	116.84	0.76	5.33	0.13
A351	4 3/4	5 1/8	3/16	4.725	0.030	0.210	0.005	120.02	0.76	5.33	0.13
A352	4 7/8	5 1/4	3/16	4.850	0.030	0.210	0.005	123.19	0.76	5.33	0.13
A353	5	5 3/8	3/16	4.975	0.037	0.210	0.005	126.37	0.94	5.33	0.13
A354	5 1/8	5 1/2	3/16	5.100	0.037	0.210	0.005	129.54	0.94	5.33	0.13
A355	5 1/4	5 5/8	3/16	5.225	0.037	0.210	0.005	132.72	0.94	5.33	0.13
A356	5 3/8	5 3/4	3/16	5.350	0.037	0.210	0.005	135.89	0.94	5.33	0.13
A357	5 1/2	5 7/8	3/16	5.475	0.037	0.210	0.005	139.07	0.94	5.33	0.13
A358	5 5/8	6	3/16	5.600	0.037	0.210	0.005	142.24	0.94	5.33	0.13
A359	5 3/4	6 1/8	3/16	5.725	0.037	0.210	0.005	145.42	0.94	5.33	0.13
A360	5 7/8	6 1/4	3/16	5.850	0.037	0.210	0.005	148.59	0.94	5.33	0.13
A361	6	6 3/8	3/16	5.975	0.037	0.210	0.005	151.77	0.94	5.33	0.13
A362	6 1/4	6 5/8	3/16	6.225	0.040	0.210	0.005	158.12	1.02	5.33	0.13
A363	6 1/2	6 7/8	3/16	6.475	0.040	0.210	0.005	164.47	1.02	5.33	0.13
A364	6 3/4	7 1/8	3/16	6.725	0.040	0.210	0.005	170.82	1.02	5.33	0.13
A365	7	7 3/8	3/16	6.975	0.040	0.210	0.005	177.17	1.02	5.33	0.13
A366	7 1/4	7 5/8	3/16	7.225	0.045	0.210	0.005	183.52	1.14	5.33	0.13
A367	7 1/2	7 7/8	3/16	7.475	0.045	0.210	0.005	189.87	1.14	5.33	0.13

O-RING STANDARD SIZE(AS-568A)

AS 568A SIZE	NOMINAL SIZE INCHES			STANDARD O-RING INCHES				METRIC O-RING MILLIMETERS			
	I.D.	O.D.	W.	I.D.	±	W.	±	I.D.	±	W.	±
A368	7 3/4	8 1/8	3/16	7.725	0.045	0.210	0.005	196.22	1.14	5.33	0.13
A369	8	8 3/8	3/16	7.975	0.045	0.210	0.005	202.57	1.14	5.33	0.13
A370	8 1/4	8 5/8	3/16	8.225	0.050	0.210	0.005	208.92	1.27	5.33	0.13
A371	8 1/2	8 7/8	3/16	8.475	0.050	0.210	0.005	215.27	1.27	5.33	0.13
A372	8 3/4	9 1/8	3/16	8.725	0.050	0.210	0.005	221.62	1.27	5.33	0.13
A373	9	9 3/8	3/16	8.975	0.050	0.210	0.005	227.97	1.27	5.33	0.13
A374	9 1/4	9 5/8	3/16	9.225	0.055	0.210	0.005	234.32	1.40	5.33	0.13
A375	9 1/2	9 7/8	3/16	9.475	0.055	0.210	0.005	240.67	1.40	5.33	0.13
A376	9 3/4	10 1/8	3/16	9.725	0.055	0.210	0.005	247.02	1.40	5.33	0.13
A377	10	10 3/8	3/16	9.975	0.055	0.210	0.005	253.37	1.40	5.33	0.13
A378	10 1/2	10 7/8	3/16	10.475	0.060	0.210	0.005	266.07	1.52	5.33	0.13
A379	11	11 3/8	3/16	10.975	0.060	0.210	0.005	278.77	1.52	5.33	0.13
A380	11 1/2	11 7/8	3/16	11.475	0.065	0.210	0.005	291.47	1.65	5.33	0.13
A381	12	12 3/8	3/16	11.975	0.065	0.210	0.005	304.17	1.65	5.33	0.13
A382	13	13 3/8	3/16	12.975	0.065	0.210	0.005	329.57	1.65	5.33	0.13
A383	14	14 3/8	3/16	13.975	0.070	0.210	0.005	354.97	1.78	5.33	0.13
A384	15	15 3/8	3/16	14.975	0.070	0.210	0.005	380.37	1.78	5.33	0.13
A385	16	16 3/8	3/16	15.955	0.075	0.210	0.005	405.26	1.91	5.33	0.13
A386	17	17 3/8	3/16	16.955	0.080	0.210	0.005	430.66	2.03	5.33	0.13
A387	18	18 3/8	3/16	17.955	0.085	0.210	0.005	456.06	2.16	5.33	0.13
A388	19	19 3/8	3/16	18.955	0.090	0.210	0.005	481.46	2.29	5.33	0.13
A389	20	20 3/8	3/16	19.955	0.095	0.210	0.005	506.86	2.41	5.33	0.13
A390	21	21 3/8	3/16	20.955	0.095	0.210	0.005	532.26	2.41	5.33	0.13
A391	22	22 3/8	3/16	21.955	0.100	0.210	0.005	557.66	2.54	5.33	0.13
A392	23	23 3/8	3/16	22.940	0.105	0.210	0.005	582.68	2.67	5.33	0.13
A393	24	24 3/8	3/16	23.940	0.110	0.210	0.005	608.08	2.79	5.33	0.13
A394	25	25 3/8	3/16	24.940	0.115	0.210	0.005	633.48	2.92	5.33	0.13
A395	26	26 3/8	3/16	25.940	0.120	0.210	0.005	658.88	3.05	5.33	0.13
A400	1 3/8	1 7/8	1/4	1.350	0.013	0.275	0.006	34.29	0.33	6.99	0.15
A401	1 1/2	2	1/4	1.475	0.014	0.275	0.006	37.47	0.36	6.99	0.15
A402	1 5/8	2 1/8	1/4	1.600	0.015	0.275	0.006	40.64	0.39	6.99	0.15
A403	1 3/4	2 1/4	1/4	1.725	0.016	0.275	0.006	43.82	0.41	6.99	0.15
A404	1 7/8	2 3/8	1/4	1.850	0.017	0.275	0.006	46.99	0.44	6.99	0.15
A405	2	2 1/2	1/4	1.975	0.018	0.275	0.006	50.17	0.46	6.99	0.15
A406	2 1/8	2 5/8	1/4	2.100	0.019	0.275	0.006	53.34	0.48	6.99	0.15
A407	2 1/4	2 3/4	1/4	2.225	0.020	0.275	0.006	56.52	0.51	6.99	0.15
A408	2 3/8	2 7/8	1/4	2.350	0.021	0.275	0.006	59.69	0.54	6.99	0.15
A409	2 1/2	3	1/4	2.475	0.022	0.275	0.006	62.87	0.56	6.99	0.15
A410	2 5/8	3 1/8	1/4	2.600	0.023	0.275	0.006	66.04	0.59	6.99	0.15
A411	2 3/4	3 1/4	1/4	2.725	0.024	0.275	0.006	69.22	0.61	6.99	0.15
A412	2 7/8	3 3/8	1/4	2.850	0.025	0.275	0.006	72.39	0.64	6.99	0.15
A413	3	3 1/2	1/4	2.975	0.026	0.275	0.006	75.57	0.66	6.99	0.15
A414	3 1/8	3 5/8	1/4	3.100	0.026	0.275	0.006	78.74	0.67	6.99	0.15
A415	3 1/4	3 3/4	1/4	3.225	0.028	0.275	0.006	81.92	0.71	6.99	0.15
A416	3 3/8	3 7/8	1/4	3.350	0.029	0.275	0.006	85.09	0.73	6.99	0.15

O-RING STANDARD SIZE(AS-568A)

AS 568A SIZE	NOMINAL SIZE INCHES			STANDARD O-RING INCHES				METRIC O-RING MILLIMETERS			
	I.D.	O.D.	W.	I.D.	±	W.	±	I.D.	±	W.	±
A417	3 1/2	4	1/4	3.475	0.030	0.275	0.006	88.27	0.75	6.99	0.15
A418	3 5/8	4 1/8	1/4	3.600	0.031	0.275	0.006	91.44	0.79	6.99	0.15
A419	3 3/4	4 1/4	1/4	3.725	0.032	0.275	0.006	94.62	0.81	6.99	0.15
A420	3 7/8	4 3/8	1/4	3.850	0.033	0.275	0.006	97.79	0.83	6.99	0.15
A421	4	4 1/2	1/4	3.975	0.033	0.275	0.006	100.97	0.84	6.99	0.15
A422	4 1/8	4 5/8	1/4	4.100	0.034	0.275	0.006	104.14	0.87	6.99	0.15
A423	4 1/4	4 3/4	1/4	4.225	0.035	0.275	0.006	107.32	0.89	6.99	0.15
A424	4 3/8	4 7/8	1/4	4.350	0.036	0.275	0.006	110.49	0.91	6.99	0.15
A425	4 1/2	5	1/4	4.475	0.033	0.275	0.006	113.67	0.84	6.99	0.15
A426	4 5/8	5 1/8	1/4	4.600	0.033	0.275	0.006	116.84	0.84	6.99	0.15
A427	4 3/4	5 1/4	1/4	4.725	0.033	0.28	0.006	120.02	0.84	6.99	0.15
A428	4 7/8	5 3/8	1/4	4.85	0.033	0.28	0.006	123.19	0.84	6.99	0.15
A429	5	5 1/2	1/4	4.975	0.037	0.275	0.006	126.37	0.94	6.99	0.15
A430	5 1/8	5 5/8	1/4	5.100	0.037	0.275	0.006	129.54	0.94	6.99	0.15
A431	5 1/4	5 3/4	1/4	5.225	0.037	0.275	0.006	132.72	0.94	6.99	0.15
A432	5 3/8	5 7/8	1/4	5.350	0.037	0.275	0.006	135.89	0.94	6.99	0.15
A433	5 1/2	6	1/4	5.475	0.037	0.275	0.006	139.07	0.94	6.99	0.15
A434	5 5/8	6 1/8	1/4	5.600	0.037	0.275	0.006	142.24	0.94	6.99	0.15
A435	5 3/4	6 1/4	1/4	5.725	0.037	0.275	0.006	145.42	0.94	6.99	0.15
A436	5 7/8	6 3/8	1/4	5.850	0.037	0.275	0.006	148.59	0.94	6.99	0.15
A437	6	6 1/2	1/4	5.975	0.037	0.275	0.006	151.77	0.94	6.99	0.15
A438	6 1/4	6 3/4	1/4	6.225	0.040	0.275	0.006	158.12	1.02	6.99	0.15
A439	6 1/2	7	1/4	6.475	0.040	0.275	0.006	164.47	1.02	6.99	0.15
A440	6 3/4	7 1/4	1/4	6.725	0.040	0.275	0.006	170.82	1.02	6.99	0.15
A441	7	7 1/2	1/4	6.975	0.040	0.275	0.006	177.17	1.02	6.99	0.15
A442	7 1/4	7 3/4	1/4	7.225	0.045	0.275	0.006	183.52	1.14	6.99	0.15
A443	7 1/2	8	1/4	7.475	0.045	0.275	0.006	189.87	1.14	6.99	0.15
A444	7 3/4	8 1/4	1/4	7.725	0.045	0.275	0.006	196.22	1.14	6.99	0.15
A445	8	8 1/2	1/4	7.975	0.045	0.275	0.006	202.57	1.14	6.99	0.15
A446	8 1/2	9	1/4	8.475	0.055	0.275	0.006	215.27	1.4	6.99	0.15
A447	9	9 1/2	1/4	8.975	0.055	0.275	0.006	227.97	1.4	6.99	0.15
A448	9 1/2	10	1/4	9.475	0.055	0.275	0.006	240.67	1.4	6.99	0.15
A449	10	10 1/2	1/4	9.975	0.055	0.275	0.006	253.37	1.4	6.99	0.15
A450	10 1/2	11	1/4	10.475	0.060	0.275	0.006	266.07	1.52	6.99	0.15
A451	11	11 1/2	1/4	10.975	0.060	0.275	0.006	278.77	1.52	6.99	0.15
A452	11 1/2	12	1/4	11.475	0.060	0.275	0.006	291.47	1.52	6.99	0.15
A453	12	12 1/2	1/4	11.975	0.060	0.275	0.006	304.17	1.52	6.99	0.15
A454	12 1/2	13	1/4	12.475	0.060	0.275	0.006	316.87	1.52	6.99	0.15
A455	13	13 1/2	1/4	12.975	0.060	0.275	0.006	329.57	1.52	6.99	0.15
A456	13 1/2	14	1/4	13.475	0.070	0.275	0.006	342.27	1.78	6.99	0.15
A457	14	14 1/2	1/4	13.975	0.070	0.275	0.006	354.97	1.78	6.99	0.15
A458	14 1/2	15	1/4	14.475	0.070	0.275	0.006	367.67	1.78	6.99	0.15
A459	15	15 1/2	1/4	14.975	0.070	0.275	0.006	380.37	1.78	6.99	0.15
A460	15 1/2	16	1/4	15.475	0.070	0.275	0.006	393.07	1.78	6.99	0.15
A461	16	16 1/2	1/4	15.955	0.075	0.275	0.006	405.26	1.91	6.99	0.15

O-RING STANDARD SIZE(AS-568A)

AS 568A SIZE	NOMINAL SIZE INCHES			STANDARD O-RING INCHES				METRIC O-RING MILLIMETERS			
	I.D.	O.D.	W.	I.D.	±	W.	±	I.D.	±	W.	±
A462	16 1/2	17	1/4	16.455	0.075	0.275	0.006	417.96	1.91	6.99	0.15
A463	17	17 1/2	1/4	16.955	0.080	0.275	0.006	430.66	2.03	6.99	0.15
A464	17 1/2	18	1/4	17.455	0.085	0.275	0.006	443.36	2.16	6.99	0.15
A465	18	18 1/2	1/4	17.955	0.085	0.275	0.006	456.06	2.16	6.99	0.15
A466	18 1/2	19	1/4	18.455	0.085	0.275	0.006	468.76	2.16	6.99	0.15
A467	19	19 1/2	1/4	18.955	0.090	0.275	0.006	481.46	2.29	6.99	0.15
A468	19 1/2	20	1/4	19.455	0.090	0.275	0.006	494.16	2.29	6.99	0.15
A469	20	20 1/2	1/4	19.955	0.095	0.275	0.006	506.86	2.41	6.99	0.15
A470	21	21 1/2	1/4	20.955	0.095	0.275	0.006	532.26	2.41	6.99	0.15
A471	22	22 1/2	1/4	21.955	0.100	0.275	0.006	557.66	2.54	6.99	0.15
A472	23	23 1/2	1/4	22.940	0.105	0.275	0.006	582.68	2.67	6.99	0.15
A473	24	24 1/2	1/4	23.940	0.110	0.275	0.006	608.08	2.79	6.99	0.15
A474	25	25 1/2	1/4	24.940	0.115	0.275	0.006	633.48	2.92	6.99	0.15
A475	26	26 1/2	1/4	25.940	0.120	0.275	0.006	658.88	3.05	6.99	0.15

AS 568A SIZE	NOMINAL	MILLIMETERS				INCHES			
	O.D.	I.D.	±	W.	±	I.D.	±	W.	±
M-901	3/32	0.185	0.005	0.056	0.003	4.70	0.13	1.42	0.08
M-902	1/8	0.239	0.005	0.064	0.003	6.07	0.13	1.63	0.08
M-903	3/16	0.301	0.005	0.064	0.003	7.65	0.13	1.63	0.08
M-904	1/4	0.351	0.005	0.072	0.003	8.92	0.13	1.83	0.08
M-905	5/16	0.414	0.005	0.072	0.003	10.52	0.13	1.83	0.08
M-906	3/8	0.468	0.005	0.078	0.003	11.89	0.13	1.98	0.08
M-907	7/16	0.530	0.007	0.082	0.003	13.46	0.18	2.08	0.08
M-908	1/2	0.644	0.009	0.087	0.003	16.36	0.23	2.21	0.08
M-909	9/16	0.706	0.009	0.097	0.003	17.93	0.23	2.46	0.08
M-910	5/8	0.755	0.009	0.097	0.003	19.18	0.23	2.46	0.08
M-911	11/16	0.863	0.009	0.116	0.004	21.92	0.23	2.95	0.10
M-912	3/4	0.924	0.009	0.116	0.004	23.47	0.23	2.95	0.10
M-913	13/16	0.986	0.010	0.116	0.004	25.04	0.25	2.95	0.10
M-914	7/8	1.047	0.010	0.116	0.004	26.59	0.25	2.95	0.10
M-916	1	1.171	0.010	0.116	0.004	29.74	0.25	2.95	0.10
M-918	1 1/8	1.355	0.012	0.116	0.004	34.42	0.30	2.95	0.10
M-920	1 1/4	1.475	0.014	0.118	0.004	37.47	0.36	3.00	0.10
M-924	1 1/2	1.720	0.014	0.118	0.004	43.69	0.36	3.00	0.10
M-928	1 3/4	2.090	0.018	0.118	0.004	53.09	0.46	3.00	0.10
M-932	2	2.337	0.018	0.118	0.004	59.36	0.46	3.00	0.10

O-RING STANDARD SIZE(JIS B 2401)

JIS B 2401 SIZE	MILLIMETERS				INCHES			
	I.D.	±	W.	±	I.D.	±	W.	±
P3	2.80	0.14	1.90	0.07	0.110	0.006	0.075	0.003
P4	3.80	0.14	1.90	0.07	0.150	0.006	0.075	0.003
P5	4.80	0.15	1.90	0.07	0.189	0.006	0.075	0.003
P6	5.80	0.15	1.90	0.07	0.228	0.006	0.075	0.003
P7	6.80	0.16	1.90	0.07	0.268	0.006	0.075	0.003
P8	7.80	0.16	1.90	0.07	0.307	0.006	0.075	0.003
P9	8.80	0.17	1.90	0.07	0.346	0.007	0.075	0.003
P10	9.80	0.17	1.90	0.07	0.386	0.007	0.075	0.003
P10A	9.80	0.17	2.40	0.07	0.386	0.007	0.094	0.003
P11	10.80	0.18	2.40	0.07	0.425	0.007	0.094	0.003
P11.2	11.00	0.18	2.40	0.07	0.433	0.007	0.094	0.003
P12	11.80	0.19	2.40	0.07	0.465	0.007	0.094	0.003
P12.5	12.30	0.19	2.40	0.07	0.484	0.007	0.094	0.003
P14	13.80	0.19	2.40	0.07	0.543	0.007	0.094	0.003
P15	14.80	0.20	2.40	0.07	0.583	0.008	0.094	0.003
P16	15.80	0.20	2.40	0.07	0.622	0.008	0.094	0.003
P18	17.80	0.21	2.40	0.07	0.701	0.008	0.094	0.003
P20	19.80	0.22	2.40	0.07	0.780	0.009	0.094	0.003
P21	20.80	0.23	2.40	0.07	0.819	0.009	0.094	0.003
P22	21.80	0.24	2.40	0.07	0.858	0.009	0.094	0.003
P22A	21.70	0.24	3.50	0.10	0.854	0.009	0.138	0.004
P22.4	22.10	0.24	3.50	0.10	0.870	0.009	0.138	0.004
P24	23.70	0.24	3.50	0.10	0.933	0.009	0.138	0.004
P25	24.70	0.25	3.50	0.10	0.972	0.010	0.138	0.004
P25.5	25.20	0.25	3.50	0.10	0.992	0.010	0.138	0.004
P26	25.70	0.26	3.50	0.10	1.012	0.010	0.138	0.004
P28	27.70	0.28	3.50	0.10	1.091	0.011	0.138	0.004
P29	28.70	0.29	3.50	0.10	1.130	0.011	0.138	0.004
P29.5	29.20	0.29	3.50	0.10	1.150	0.011	0.138	0.004
P30	29.70	0.29	3.50	0.10	1.169	0.011	0.138	0.004
P31	30.70	0.30	3.50	0.10	1.209	0.012	0.138	0.004
P31.5	31.20	0.31	3.50	0.10	1.228	0.012	0.138	0.004
P32	31.70	0.31	3.50	0.10	1.248	0.012	0.138	0.004
P34	33.70	0.33	3.50	0.10	1.327	0.013	0.138	0.004
P35	34.70	0.34	3.50	0.10	1.366	0.013	0.138	0.004
P35.5	35.20	0.34	3.50	0.10	1.386	0.013	0.138	0.004
P36	35.70	0.34	3.50	0.10	1.406	0.013	0.138	0.004
P38	37.70	0.37	3.50	0.10	1.484	0.015	0.138	0.004
P39	38.70	0.37	3.50	0.10	1.524	0.015	0.138	0.004
P40	39.70	0.37	3.50	0.10	1.563	0.015	0.138	0.004
P41	40.70	0.38	3.50	0.10	1.602	0.015	0.138	0.004
P42	41.70	0.39	3.50	0.10	1.642	0.015	0.138	0.004
P44	43.70	0.41	3.50	0.10	1.720	0.016	0.138	0.004
P45	44.70	0.41	3.50	0.10	1.760	0.016	0.138	0.004
P46	45.70	0.42	3.50	0.10	1.799	0.017	0.138	0.004
P48	47.70	0.44	3.50	0.10	1.878	0.017	0.138	0.004
P49	48.70	0.45	3.50	0.10	1.917	0.018	0.138	0.004
P50	49.70	0.45	3.50	0.10	1.957	0.018	0.138	0.004
P48A	47.60	0.44	5.70	0.13	1.874	0.017	0.224	0.005
P50A	49.60	0.45	5.70	0.13	1.953	0.018	0.224	0.005
P52	51.60	0.47	5.70	0.13	2.031	0.019	0.224	0.005
P53	52.60	0.48	5.70	0.13	2.071	0.019	0.224	0.005

O-RING STANDARD SIZE(JIS B 2401)

JIS B 2401 SIZE	MILLIMETERS				INCHES			
	I.D.	±	W.	±	I.D.	±	W.	±
P55	54.60	0.49	5.70	0.13	2.150	0.019	0.224	0.005
P56	55.60	0.50	5.70	0.13	2.189	0.020	0.224	0.005
P58	57.60	0.52	5.70	0.13	2.268	0.020	0.224	0.005
P60	59.60	0.53	5.70	0.13	2.346	0.021	0.224	0.005
P62	61.60	0.55	5.70	0.13	2.425	0.022	0.224	0.005
P63	62.60	0.56	5.70	0.13	2.465	0.022	0.224	0.005
P65	64.60	0.57	5.70	0.13	2.543	0.022	0.224	0.005
P67	66.60	0.59	5.70	0.13	2.622	0.023	0.224	0.005
P70	69.60	0.61	5.70	0.13	2.740	0.024	0.224	0.005
P71	70.60	0.62	5.70	0.13	2.780	0.024	0.224	0.005
P75	74.60	0.65	5.70	0.13	2.937	0.026	0.224	0.005
P80	79.60	0.69	5.70	0.13	3.134	0.027	0.224	0.005
P85	84.60	0.73	5.70	0.13	3.331	0.029	0.224	0.005
P90	89.60	0.77	5.70	0.13	3.528	0.030	0.224	0.005
P95	94.60	0.81	5.70	0.13	3.724	0.032	0.224	0.005
P100	99.60	0.84	5.70	0.13	3.921	0.033	0.224	0.005
P102	101.60	0.85	5.70	0.13	4.000	0.033	0.224	0.005
P105	104.60	0.87	5.70	0.13	4.118	0.034	0.224	0.005
P110	109.60	0.91	5.70	0.13	4.315	0.036	0.224	0.005
P112	111.60	0.92	5.70	0.13	4.394	0.036	0.224	0.005
P115	114.60	0.94	5.70	0.13	4.512	0.037	0.224	0.005
P120	119.60	0.98	5.70	0.13	4.709	0.039	0.224	0.005
P125	124.60	1.01	5.70	0.13	4.906	0.040	0.224	0.005
P130	129.60	1.05	5.70	0.13	5.102	0.041	0.224	0.005
P132	131.60	1.06	5.70	0.13	5.181	0.042	0.224	0.005
P135	134.60	1.09	5.70	0.13	5.299	0.043	0.224	0.005
P140	139.60	1.12	5.70	0.13	5.496	0.044	0.224	0.005
P145	144.60	1.16	5.70	0.13	5.693	0.046	0.224	0.005
P150	149.60	1.19	5.70	0.13	5.890	0.047	0.224	0.005
P150A	149.50	1.19	8.40	0.15	5.886	0.047	0.331	0.006
P155	154.50	1.23	8.40	0.15	6.083	0.048	0.331	0.006
P160	159.50	1.26	8.40	0.15	6.280	0.050	0.331	0.006
P165	164.50	1.30	8.40	0.15	6.476	0.051	0.331	0.006
P170	169.50	1.33	8.40	0.15	6.673	0.052	0.331	0.006
P175	174.50	1.37	8.40	0.15	6.870	0.054	0.331	0.006
P180	179.50	1.40	8.40	0.15	7.067	0.055	0.331	0.006
P185	184.50	1.44	8.40	0.15	7.264	0.057	0.331	0.006
P190	189.50	1.48	8.40	0.15	7.461	0.058	0.331	0.006
P195	194.50	1.51	8.40	0.15	7.657	0.059	0.331	0.006
P200	199.50	1.55	8.40	0.15	7.854	0.061	0.331	0.006
P205	204.50	1.58	8.40	0.15	8.051	0.062	0.331	0.006
P209	208.50	1.61	8.40	0.15	8.209	0.063	0.331	0.006
P210	209.50	1.62	8.40	0.15	8.248	0.064	0.331	0.006
P215	214.50	1.65	8.40	0.15	8.445	0.065	0.331	0.006
P220	219.50	1.68	8.40	0.15	8.642	0.066	0.331	0.006
P225	224.50	1.71	8.40	0.15	8.839	0.067	0.331	0.006
P230	229.50	1.75	8.40	0.15	9.035	0.069	0.331	0.006
P235	234.50	1.78	8.40	0.15	9.232	0.070	0.331	0.006
P240	239.50	1.81	8.40	0.15	9.429	0.071	0.331	0.006
P245	244.50	1.84	8.40	0.15	9.626	0.072	0.331	0.006
P250	249.50	1.88	8.40	0.15	9.823	0.074	0.331	0.006
P255	254.50	1.91	8.40	0.15	10.020	0.075	0.331	0.006

O-RING STANDARD SIZE(JIS B 2401)

JIS B 2401 SIZE	MILLIMETERS				INCHES			
	I.D.	±	W.	±	I.D.	±	W.	±
P260	259.50	1.94	8.40	0.15	10.217	0.076	0.331	0.006
P265	264.50	1.97	8.40	0.15	10.413	0.078	0.331	0.006
P270	269.50	2.01	8.40	0.15	10.610	0.079	0.331	0.006
P275	274.50	2.04	8.40	0.15	10.807	0.080	0.331	0.006
P280	279.50	2.07	8.40	0.15	11.004	0.081	0.331	0.006
P285	284.50	2.10	8.40	0.15	11.201	0.083	0.331	0.006
P290	289.50	2.14	8.40	0.15	11.398	0.084	0.331	0.006
P295	294.50	2.17	8.40	0.15	11.594	0.085	0.331	0.006
P300	299.50	2.20	8.40	0.15	11.791	0.087	0.331	0.006
P305	304.50	2.24	8.40	0.15	11.988	0.088	0.331	0.006
P310	309.50	2.27	8.40	0.15	12.185	0.089	0.331	0.006
P315	314.50	2.30	8.40	0.15	12.382	0.091	0.331	0.006
P320	319.50	2.33	8.40	0.15	12.579	0.092	0.331	0.006
P325	324.50	2.36	8.40	0.15	12.776	0.093	0.331	0.006
P330	329.50	2.39	8.40	0.15	12.972	0.094	0.331	0.006
P335	334.50	2.42	8.40	0.15	13.169	0.095	0.331	0.006
P340	339.50	2.45	8.40	0.15	13.366	0.096	0.331	0.006
P345	344.50	2.48	8.40	0.15	13.563	0.098	0.331	0.006
P350	349.50	2.51	8.40	0.15	13.760	0.099	0.331	0.006
P355	354.50	2.54	8.40	0.15	13.957	0.100	0.331	0.006
P360	359.50	2.57	8.40	0.15	14.154	0.101	0.331	0.006
P365	364.50	2.60	8.40	0.15	14.350	0.102	0.331	0.006
P370	369.50	2.63	8.40	0.15	14.547	0.104	0.331	0.006
P375	374.50	2.67	8.40	0.15	14.744	0.105	0.331	0.006
P380	379.50	2.70	8.40	0.15	14.941	0.106	0.331	0.006
P385	384.50	2.73	8.40	0.15	15.138	0.107	0.331	0.006
P390	389.50	2.77	8.40	0.15	15.335	0.109	0.331	0.006
P395	394.50	2.79	8.40	0.15	15.531	0.110	0.331	0.006
P400	399.50	2.82	8.40	0.15	15.728	0.111	0.331	0.006
P405	404.50	3.00	8.40	0.15	15.925	0.118	0.331	0.006
P410	409.50	3.00	8.40	0.15	16.122	0.118	0.331	0.006
P415	414.50	3.00	8.40	0.15	16.319	0.118	0.331	0.006
P420	419.50	3.00	8.40	0.15	16.516	0.118	0.331	0.006
P425	424.50	3.00	8.40	0.15	16.713	0.118	0.331	0.006
P430	429.50	3.00	8.40	0.15	16.909	0.118	0.331	0.006
P435	434.50	3.00	8.40	0.15	17.106	0.118	0.331	0.006
P440	439.50	3.00	8.40	0.15	17.303	0.118	0.331	0.006
P445	444.50	3.00	8.40	0.15	17.500	0.118	0.331	0.006
P450	449.50	3.00	8.40	0.15	17.697	0.118	0.331	0.006
P455	454.50	3.30	8.40	0.15	17.894	0.130	0.331	0.006
P460	459.50	3.30	8.40	0.15	18.091	0.130	0.331	0.006
P465	464.50	3.30	8.40	0.15	18.287	0.130	0.331	0.006
P470	469.50	3.30	8.40	0.15	18.484	0.130	0.331	0.006
P475	474.50	3.30	8.40	0.15	18.681	0.130	0.331	0.006
P480	479.50	3.30	8.40	0.15	18.878	0.130	0.331	0.006
P485	484.50	3.30	8.40	0.15	19.075	0.130	0.331	0.006
P490	489.50	3.30	8.40	0.15	19.272	0.130	0.331	0.006
P495	494.50	3.30	8.40	0.15	19.468	0.130	0.331	0.006
P500	499.50	3.30	8.40	0.15	19.665	0.130	0.331	0.006
P590	589.50	3.97	8.40	0.15	23.209	0.156	0.331	0.006
P600	599.50	4.03	8.40	0.15	23.602	0.159	0.331	0.006

O-RING STANDARD SIZE(JIS B 2401)

JIS B 2401 SIZE	MILLIMETERS				INCHES			
	I.D.	±	W.	±	I.D.	±	W.	±
G25	24.40	0.25	3.10	0.10	0.961	0.010	0.122	0.004
G30	29.40	0.29	3.10	0.10	1.157	0.011	0.122	0.004
G35	34.40	0.33	3.10	0.10	1.354	0.013	0.122	0.004
G40	39.40	0.37	3.10	0.10	1.551	0.015	0.122	0.004
G45	44.40	0.41	3.10	0.10	1.748	0.016	0.122	0.004
G50	49.40	0.45	3.10	0.10	1.945	0.018	0.122	0.004
G55	54.40	0.49	3.10	0.10	2.142	0.019	0.122	0.004
G60	59.40	0.53	3.10	0.10	2.339	0.021	0.122	0.004
G65	64.40	0.57	3.10	0.10	2.535	0.022	0.122	0.004
G70	69.40	0.61	3.10	0.10	2.732	0.024	0.122	0.004
G75	74.40	0.65	3.10	0.10	2.929	0.026	0.122	0.004
G80	79.40	0.69	3.10	0.10	3.126	0.027	0.122	0.004
G85	84.40	0.73	3.10	0.10	3.323	0.029	0.122	0.004
G90	89.40	0.77	3.10	0.10	3.520	0.030	0.122	0.004
G95	94.40	0.81	3.10	0.10	3.717	0.032	0.122	0.004
G100	99.40	0.85	3.10	0.10	3.913	0.033	0.122	0.004
G105	104.40	0.87	3.10	0.10	4.110	0.034	0.122	0.004
G110	109.40	0.91	3.10	0.10	4.307	0.036	0.122	0.004
G115	114.40	0.94	3.10	0.10	4.504	0.037	0.122	0.004
G120	119.40	0.98	3.10	0.10	4.701	0.039	0.122	0.004
G125	124.40	1.01	3.10	0.10	4.898	0.040	0.122	0.004
G130	129.40	1.05	3.10	0.10	5.094	0.041	0.122	0.004
G135	134.40	1.08	3.10	0.10	5.291	0.043	0.122	0.004
G140	139.40	1.12	3.10	0.10	5.488	0.044	0.122	0.004
G145	144.40	1.16	3.10	0.10	5.685	0.046	0.122	0.004
G150	149.30	1.19	5.70	0.13	5.878	0.047	0.224	0.005
G155	154.30	1.23	5.70	0.13	6.075	0.048	0.224	0.005
G160	159.30	1.26	5.70	0.13	6.272	0.050	0.224	0.005
G165	164.30	1.30	5.70	0.13	6.468	0.051	0.224	0.005
G170	169.30	1.33	5.70	0.13	6.665	0.052	0.224	0.005
G175	174.30	1.37	5.70	0.13	6.862	0.054	0.224	0.005
G180	179.30	1.40	5.70	0.13	7.059	0.055	0.224	0.005
G185	184.30	1.44	5.70	0.13	7.256	0.057	0.224	0.005
G190	189.30	1.47	5.70	0.13	7.453	0.058	0.224	0.005
G195	194.30	1.51	5.70	0.13	7.650	0.059	0.224	0.005
G200	199.30	1.55	5.70	0.13	7.846	0.061	0.224	0.005
G205	204.30	1.58	5.70	0.13	8.043	0.062	0.224	0.005
G210	209.30	1.61	5.70	0.13	8.240	0.063	0.224	0.005
G215	214.30	1.65	5.70	0.13	8.437	0.065	0.224	0.005
G220	219.30	1.68	5.70	0.13	8.634	0.066	0.224	0.005
G225	224.30	1.71	5.70	0.13	8.831	0.067	0.224	0.005
G230	229.30	1.73	5.70	0.13	9.028	0.068	0.224	0.005
G235	234.30	1.78	5.70	0.13	9.224	0.070	0.224	0.005
G240	239.30	1.81	5.70	0.13	9.421	0.071	0.224	0.005
G245	244.30	1.85	5.70	0.13	9.618	0.073	0.224	0.005
G250	249.30	1.88	5.70	0.13	9.815	0.074	0.224	0.005
G255	254.30	1.91	5.70	0.13	10.012	0.075	0.224	0.005
G260	259.30	1.94	5.70	0.13	10.209	0.076	0.224	0.005
G265	264.30	1.98	5.70	0.13	10.405	0.078	0.224	0.005
G270	269.30	2.01	5.70	0.13	10.602	0.079	0.224	0.005
G275	274.30	2.04	5.70	0.13	10.799	0.080	0.224	0.005
G280	279.30	2.07	5.70	0.13	10.996	0.081	0.224	0.005
G285	284.30	2.11	5.70	0.13	11.193	0.083	0.224	0.005
G290	289.30	2.14	5.70	0.13	11.390	0.084	0.224	0.005
G295	294.30	2.17	5.70	0.13	11.587	0.085	0.224	0.005

O-RING STANDARD SIZE(JIS B 2401)

JIS B 2401 SIZE	MILLIMETERS				INCHES			
	I.D.	±	W.	±	I.D.	±	W.	±
G300	299.30	2.20	5.70	0.13	11.783	0.087	0.224	0.005
G305	304.30	2.24	5.70	0.13	11.980	0.088	0.224	0.005
G310	309.30	2.27	5.70	0.13	12.177	0.089	0.224	0.005
G315	314.30	2.30	5.70	0.13	12.374	0.091	0.224	0.005
G320	319.30	2.33	5.70	0.13	12.571	0.092	0.224	0.005
G325	324.30	2.36	5.70	0.13	12.768	0.093	0.224	0.005
G330	329.30	2.39	5.70	0.13	12.965	0.094	0.224	0.005
G335	334.30	2.42	5.70	0.13	13.161	0.095	0.224	0.005
G340	339.30	2.45	5.70	0.13	13.358	0.096	0.224	0.005
G345	344.30	2.48	5.70	0.13	13.555	0.098	0.224	0.005
G350	349.30	2.51	5.70	0.13	13.752	0.099	0.224	0.005
G355	354.30	2.54	5.70	0.13	13.949	0.100	0.224	0.005
G360	359.30	2.57	5.70	0.13	14.146	0.101	0.224	0.005
G365	364.30	2.60	5.70	0.13	14.342	0.102	0.224	0.005
G370	369.30	2.63	5.70	0.13	14.539	0.104	0.224	0.005
G375	374.30	2.67	5.70	0.13	14.736	0.105	0.224	0.005
G380	379.30	2.70	5.70	0.13	14.933	0.106	0.224	0.005
G385	384.30	2.73	5.70	0.13	15.130	0.107	0.224	0.005
G390	389.30	2.77	5.70	0.13	15.327	0.109	0.224	0.005
G395	394.30	2.79	5.70	0.13	15.524	0.110	0.224	0.005
G400	399.30	2.82	5.70	0.13	15.720	0.111	0.224	0.005
G405	404.30	3.00	5.70	0.13	15.917	0.118	0.224	0.005
G410	409.30	3.00	5.70	0.13	16.114	0.118	0.224	0.005
G415	414.30	3.00	5.70	0.13	16.311	0.118	0.224	0.005
G420	419.30	3.00	5.70	0.13	16.508	0.118	0.224	0.005
G425	424.30	3.00	5.70	0.13	16.705	0.118	0.224	0.005
G430	429.30	3.00	5.70	0.13	16.902	0.118	0.224	0.005
G435	434.30	3.00	5.70	0.13	17.098	0.118	0.224	0.005
G440	439.30	3.00	5.70	0.13	17.295	0.118	0.224	0.005
G445	444.30	3.00	5.70	0.13	17.492	0.118	0.224	0.005
G450	449.30	3.00	5.70	0.13	17.689	0.118	0.224	0.005
G455	454.30	3.30	5.70	0.13	17.886	0.130	0.224	0.005
G460	459.30	3.30	5.70	0.13	18.083	0.130	0.224	0.005
G465	464.30	3.30	5.70	0.13	18.279	0.130	0.224	0.005
G470	469.30	3.30	5.70	0.13	18.476	0.130	0.224	0.005
G475	474.30	3.30	5.70	0.13	18.673	0.130	0.224	0.005
G480	479.30	3.30	5.70	0.13	18.870	0.130	0.224	0.005
G485	484.30	3.30	5.70	0.13	19.067	0.130	0.224	0.005
G490	489.30	3.30	5.70	0.13	19.264	0.130	0.224	0.005
G495	494.30	3.30	5.70	0.13	19.461	0.130	0.224	0.005
G500	499.30	3.30	5.70	0.13	19.657	0.130	0.224	0.005
G510	509.30	3.47	5.70	0.13	20.051	0.136	0.224	0.005
G520	519.30	3.53	5.70	0.13	20.445	0.139	0.224	0.005
G530	529.30	3.59	5.70	0.13	20.839	0.141	0.224	0.005
G540	539.30	3.65	5.70	0.13	21.232	0.144	0.224	0.005
G550	549.30	3.72	5.70	0.13	21.626	0.146	0.224	0.005
G560	559.30	3.78	5.70	0.13	22.020	0.149	0.224	0.005
G570	569.30	3.84	5.70	0.13	22.413	0.151	0.224	0.005
G580	579.30	3.90	5.70	0.13	22.807	0.154	0.224	0.005
G590	589.30	3.97	5.70	0.13	23.201	0.156	0.224	0.005
G600	599.30	4.03	5.70	0.13	23.594	0.159	0.224	0.005
G605	604.30	4.06	5.70	0.13	23.791	0.160	0.224	0.005

O-RING STANDARD SIZE(JIS B 2401)

JIS B 2401 SIZE	MILLIMETERS				INCHES			
	I.D.	±	W.	±	I.D.	±	W.	±
S3	2.50	0.13	1.50	0.08	0.098	0.005	0.059	0.003
S4	3.50	0.14	1.50	0.08	0.138	0.006	0.059	0.003
S5	4.50	0.14	1.50	0.08	0.177	0.006	0.059	0.003
S6	5.50	0.15	1.50	0.08	0.217	0.006	0.059	0.003
S7	6.50	0.15	1.50	0.08	0.256	0.006	0.059	0.003
S8	7.50	0.16	1.50	0.08	0.295	0.006	0.059	0.003
S9	8.50	0.16	1.50	0.08	0.335	0.006	0.059	0.003
S10	9.50	0.17	1.50	0.08	0.374	0.007	0.059	0.003
S11.2	10.70	0.18	1.50	0.08	0.421	0.007	0.059	0.003
S12	11.50	0.18	1.50	0.08	0.453	0.007	0.059	0.003
S12.5	12.00	0.19	1.50	0.08	0.472	0.007	0.059	0.003
S14	13.50	0.19	1.50	0.08	0.531	0.007	0.059	0.003
S15	14.50	0.19	1.50	0.08	0.571	0.007	0.059	0.003
S16	15.50	0.20	1.50	0.08	0.610	0.008	0.059	0.003
S18	17.50	0.21	1.50	0.08	0.689	0.008	0.059	0.003
S20	19.50	0.22	1.50	0.08	0.768	0.009	0.059	0.003
S22	21.50	0.23	1.50	0.08	0.846	0.009	0.059	0.003
S22.4	21.90	0.23	2.00	0.08	0.862	0.009	0.079	0.003
S24	23.50	0.24	2.00	0.08	0.925	0.009	0.079	0.003
S25	24.50	0.24	2.00	0.08	0.965	0.009	0.079	0.003
S26	25.50	0.25	2.00	0.08	1.004	0.010	0.079	0.003
S28	27.50	0.26	2.00	0.08	1.083	0.010	0.079	0.003
S29	28.50	0.28	2.00	0.08	1.122	0.011	0.079	0.003
S30	29.50	0.28	2.00	0.08	1.161	0.011	0.079	0.003
S31.5	31.00	0.29	2.00	0.08	1.220	0.011	0.079	0.003
S32	31.50	0.31	2.00	0.08	1.240	0.012	0.079	0.003
S34	33.50	0.32	2.00	0.08	1.319	0.013	0.079	0.003
S35	34.50	0.33	2.00	0.08	1.358	0.013	0.079	0.003
S35.5	35.00	0.33	2.00	0.08	1.378	0.013	0.079	0.003
S36	35.50	0.34	2.00	0.08	1.398	0.013	0.079	0.003
S38	37.50	0.36	2.00	0.08	1.476	0.014	0.079	0.003
S39	38.50	0.36	2.00	0.08	1.516	0.014	0.079	0.003
S40	39.50	0.38	2.00	0.08	1.555	0.015	0.079	0.003
S42	41.50	0.39	2.00	0.08	1.634	0.015	0.079	0.003
S44	43.50	0.40	2.00	0.08	1.713	0.016	0.079	0.003
S45	44.50	0.41	2.00	0.08	1.752	0.016	0.079	0.003
S46	45.50	0.42	2.00	0.08	1.791	0.017	0.079	0.003
S48	47.50	0.44	2.00	0.08	1.870	0.017	0.079	0.003
S50	49.50	0.45	2.00	0.08	1.949	0.018	0.079	0.003
S53	52.50	0.47	2.00	0.08	2.067	0.019	0.079	0.003
S55	54.50	0.50	2.00	0.08	2.146	0.020	0.079	0.003
S56	55.50	0.50	2.00	0.08	2.185	0.020	0.079	0.003
S60	59.50	0.52	2.00	0.08	2.343	0.020	0.079	0.003
S63	62.50	0.55	2.00	0.08	2.461	0.022	0.079	0.003
S65	64.50	0.56	2.00	0.08	2.539	0.022	0.079	0.003
S67	66.50	0.58	2.00	0.08	2.618	0.023	0.079	0.003
S70	69.50	0.61	2.00	0.08	2.736	0.024	0.079	0.003

O-RING STANDARD SIZE(JIS B 2401)

JIS B 2401 SIZE	MILLIMETERS				INCHES			
	I.D.	±	W.	±	I.D.	±	W.	±
S71	70.50	0.61	2.00	0.08	2.776	0.024	0.079	0.003
S75	74.50	0.64	2.00	0.08	2.933	0.025	0.079	0.003
S80	79.50	0.67	2.00	0.08	3.130	0.026	0.079	0.003
S85	84.50	0.71	2.00	0.08	3.327	0.028	0.079	0.003
S90	89.50	0.75	2.00	0.08	3.524	0.030	0.079	0.003
S95	94.50	0.79	2.00	0.08	3.720	0.031	0.079	0.003
S100	99.50	0.83	2.00	0.08	3.917	0.033	0.079	0.003
S105	104.50	0.87	2.00	0.08	4.114	0.034	0.079	0.003
S110	109.50	0.91	2.00	0.08	4.311	0.036	0.079	0.003
S112	111.50	0.91	2.00	0.08	4.390	0.036	0.079	0.003
S115	114.50	0.93	2.00	0.08	4.508	0.037	0.079	0.003
S120	119.50	0.97	2.00	0.08	4.705	0.038	0.079	0.003
S125	124.50	1.00	2.00	0.08	4.902	0.039	0.079	0.003
S130	129.50	1.05	2.00	0.08	5.098	0.041	0.079	0.003
S132	131.50	1.05	2.00	0.08	5.177	0.041	0.079	0.003
S135	134.50	1.08	2.00	0.08	5.295	0.043	0.079	0.003
S140	139.50	1.10	2.00	0.08	5.492	0.043	0.079	0.003
S145	144.50	1.13	2.00	0.08	5.689	0.044	0.079	0.003
S150	149.50	1.17	2.00	0.08	5.886	0.046	0.079	0.003
V10	9.50	0.17	4.00	0.10	0.374	0.007	0.157	0.004
V15	14.50	0.20	4.00	0.10	0.571	0.008	0.157	0.004
V24	23.50	0.24	4.00	0.10	0.925	0.009	0.157	0.004
V34	33.50	0.33	4.00	0.10	1.319	0.013	0.157	0.004
V40	39.50	0.37	4.00	0.10	1.555	0.015	0.157	0.004
V55	54.50	0.49	4.00	0.10	2.146	0.019	0.157	0.004
V58	57.50	0.52	4.00	0.10	2.264	0.020	0.157	0.004
V70	69.00	0.61	4.00	0.10	2.717	0.024	0.157	0.004
V85	84.00	0.72	4.00	0.10	3.307	0.028	0.157	0.004
V100	99.00	0.83	4.00	0.10	3.898	0.033	0.157	0.004
V120	119.00	0.97	4.00	0.10	4.685	0.038	0.157	0.004
V140	138.50	1.08	4.00	0.10	5.453	0.043	0.157	0.004
V150	148.50	1.18	4.00	0.10	5.846	0.046	0.157	0.004
V175	173.00	1.36	4.00	0.10	6.811	0.054	0.157	0.004
V225	222.50	1.70	6.00	0.15	8.760	0.067	0.236	0.006
V275	272.00	2.02	6.00	0.15	10.709	0.080	0.236	0.006
V315	312.00	2.22	6.00	0.15	12.283	0.087	0.236	0.006
V325	321.50	2.34	6.00	0.15	12.657	0.092	0.236	0.006
V380	376.00	2.68	6.00	0.15	14.803	0.106	0.236	0.006
V430	425.50	2.99	6.00	0.15	16.752	0.118	0.236	0.006
V475	470.50	3.22	6.00	0.15	18.524	0.127	0.236	0.006
V480	475.00	3.30	10.00	0.30	18.701	0.130	0.394	0.012
V490	485.00	3.31	10.00	0.30	19.094	0.130	0.394	0.012
V510	504.50	3.44	10.00	0.30	19.862	0.135	0.394	0.012
V530	524.50	3.60	10.00	0.30	20.650	0.142	0.394	0.012
V585	579.00	3.92	10.00	0.30	22.795	0.154	0.394	0.012
V640	633.50	4.24	10.00	0.30	24.941	1.467	0.394	0.012

O-RING KITS



Material: NBR & VITON

Benefits:

- Reduce down-time with immediate available of the required O-RING size
- Reduce cost as no minimum order quantity is required for a single item
- Save cost as the O-RING can be replaced without replacing the whole box

O-RING KIT 1(AS568)			
Type: 30			
Quantity: 382			
NO.	I.D.	W.	Quantity
006	2.90	1.78	20
007	3.68	1.78	20
008	4.47	1.78	20
009	5.28	1.78	20
010	6.07	1.78	20
011	7.65	1.78	20
012	9.25	1.78	20
110	9.19	2.62	13
111	10.77	2.62	13
112	12.37	2.62	13
113	13.94	2.62	13
114	15.54	2.62	13
115	17.12	2.62	13
116	18.72	2.62	13
210	18.64	3.53	10
211	20.22	3.53	10
212	21.82	3.53	10
213	23.39	3.53	10
214	25.00	3.53	10
215	26.57	3.53	10
216	28.17	3.53	10
217	29.75	3.53	10
218	31.34	3.53	10
219	32.92	3.53	10
220	34.52	3.53	10
221	36.10	3.53	10
222	37.70	3.53	10
325	37.47	5.33	7
326	40.64	5.33	7
327	43.82	5.33	7

O-RING KIT 2 (JIS)			
Type: 30			
Quantity: 382			
NO.	I.D.	W.	Quantity
P3	2.8	1.9	20
P4	3.8	1.9	20
P5	4.8	1.9	18
P6	5.8	1.9	18
P7	6.8	1.9	18
P8	7.8	1.9	18
P9	8.8	1.9	18
P10A	9.8	2.4	13
P11	10.8	2.4	13
P12	11.8	2.4	13
P14	13.8	2.4	13
P16	15.8	2.4	13
P18	17.8	2.4	13
P20	19.8	2.4	13
G20	19.4	3.1	10
G22	21.4	3.1	10
P22.4	22.1	3.5	10
G25	24.4	3.1	10
P25	24.7	3.5	10
P26	25.7	3.5	10
G30	29.4	3.1	10
P30	29.7	3.5	10
P32	31.7	3.5	10
P34	33.7	3.5	10
G35	34.4	3.1	10
P36	35.7	3.5	10
G40	39.4	3.1	10
P40	39.7	3.5	10
G45	44.4	3.1	11
P48	47.7	3.5	10

BONDED SEAL KITS



Material: NBR & VITON

Benefits:

- Reduce down-time with immediate available of the required seal size
- Reduce cost as no minimum order quantity is required for a single item
- Save cost as the seal can be replaced without replacing the whole box

BONDED SEAL KIT 1 (IMPERIAL)				
Type: 7				
Quantity: 114				
NO.	O.D	I.D.	W.	Quantity
1/8" BSP	15.88	10.37	2.0	25
1/4" BSP	20.57	13.74	2.0	25
3/8" BSP	23.80	17.28	2.0	15
1/2" BSP	28.58	21.54	2.5	15
5/8" BSP	31.75	23.49	2.3	15
3/4" BSP	34.93	27.05	2.3	15
1" BSP	42.80	33.89	3.2	4

BONDED SEAL KIT 2 (METRIC)				
Type: 7				
Quantity: 125				
NO.	O.D	I.D.	W.	Quantity
8mm	14.00	8.7	1.0	25
10mm	16.00	10.7	1.5	25
12mm	18.00	12.7	1.5	15
16mm	24.00	16.7	1.5	15
18mm	26.00	18.7	1.5	25
22mm	30.00	22.7	2.0	10
24mm	32.00	24.7	2.0	10



鐵氟龍 O 型環
PTFE O-RING



鐵氟龍墊片
PTFE GASKET



包覆式 O 型環
Encapsulated O-RING



墊片
PACKING



橡膠球
RUBBER BALL



襯套
BUSHING



護線套
GROMMET



修理盒
O-RING KIT



華司油封盒
BONDED SEAL KIT



富茂橡膠有限公司

FOR MORES RUBBER CO., LTD

地址:50562 彰化縣鹿港鎮海明街 2 號

Address: No.2, Haiming St., Lukang Township,
Changhua County 50562, Taiwan (R.O.C.)

TEL:+886-4-7841886

FAX:+886-4-7841889

Website: www.formores.com

Mail:formosa.rubber@msa.hinet.net

