

**E**stablished  
in 1952

*D.O. Smith has  
grown to become one  
of Australia's largest*

*suppliers  
of 'Public*



*Space Furniture'.*

*Supplying to the  
hospitality &  
entertainment  
industry, councils  
and shopping  
centre management,*

*D.O. Smith provides  
quality 'Public  
Space Furniture' at  
competitive prices.*

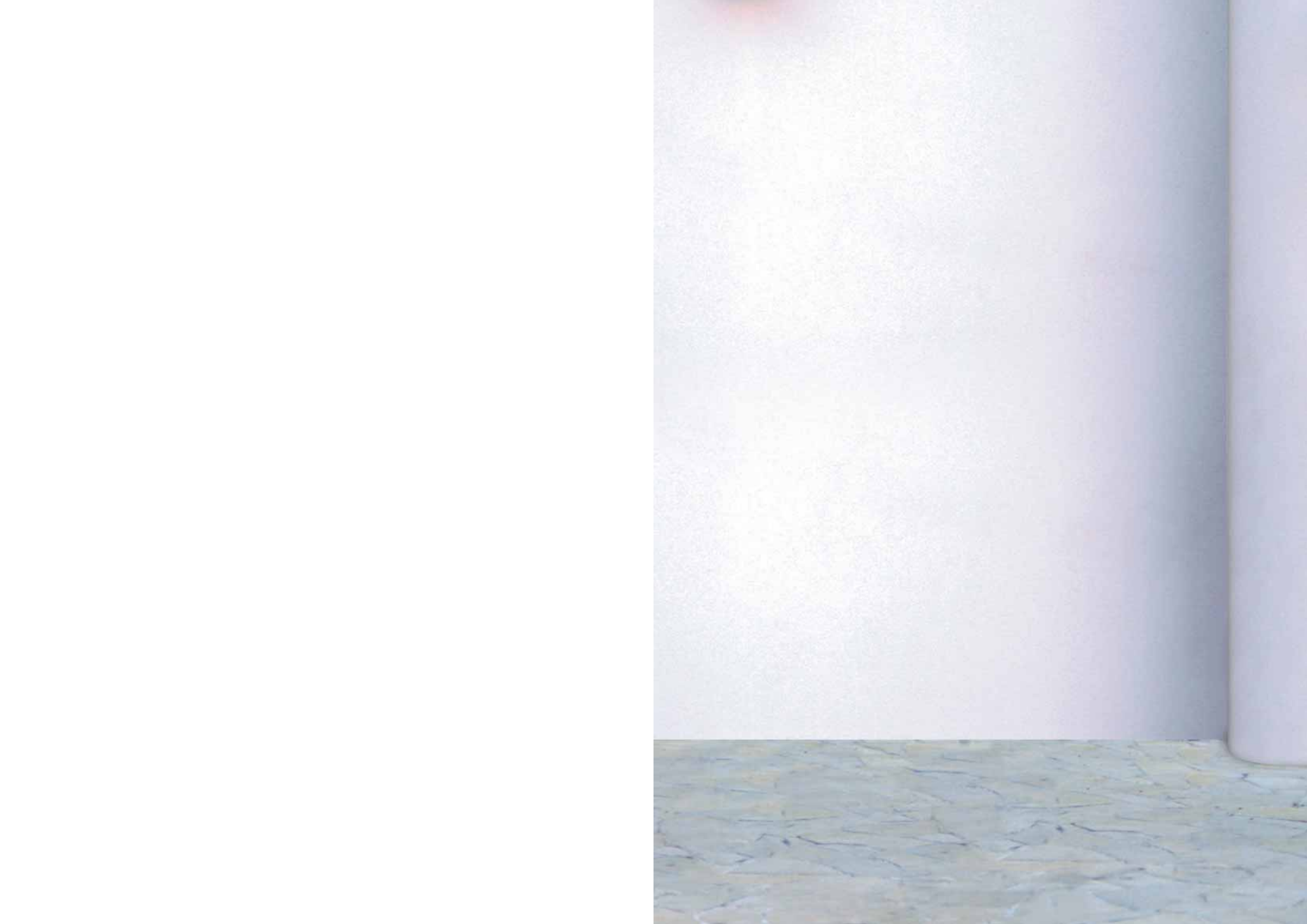
*Delivering on time is  
a priority. D.O. Smith  
an Australian owned  
and managed company*

*proudly supplies  
Australia's finest  
selection of*

*'Public Space  
Furniture'.*

furniture for public spaces





# Contents

furniture  
for public spaces

<b>Quick Reference</b>	<b>09</b>
<b>Projects</b>	<b>17</b>
<b>Ashtrays &amp; Litterbins</b>	<b>23</b>
<b>Bike Racks</b>	<b>51</b>
<b>Bollards</b>	<b>53</b>
<b>Crowd Stands</b>	<b>59</b>
<b>Hand Dryers</b>	<b>61</b>
<b>Planters</b>	<b>63</b>
<b>Seating</b>	<b>69</b>
<b>Soft Furniture</b>	<b>85</b>
<b>Shelters</b>	<b>89</b>
<b>Notes</b>	<b>91</b>







# PRODUCT PAGE

## ASHTRAYS AND LITTERBINS

 p23 CA2	 p23 HDA50	 p24 HDA60	 p24 HDA60	 p25 CA6	 p34 M300	 p34 M300 - A	 p34 L600B timb	 p35 R400	 p35 R745
 p25 CA7	 p25 HDA50	 p26 300A	 p26 400B	 p27 230A	 p36 R1600	 p36 FE570	 p37 LT480	 p38 LT480	 p39 LS480
 p27 360B	 p28 450B	 p28 600B	 p29 230A	 p29 400B	 p39 L450B	 p40 L450B	 p40 L480B	 p40 L600B	 p41 LSM480
 p29 L380	 p30 L400	 p30 L345	 p31 L400R	 p31 LTR010	 p43 LSM480	 p43 LSM480	 p43 LSM480	 p44 LSM480	 p44 LSM480
 p31 UB1	 p32 WPT - A	 p32 WPT - B	 p32 WPT	 p33 RMP Bins	 p45 LSM480	 p45 LSM480	 p46 LSM480	 p46 LSM480	 p47 FE570

# PRODUCT PAGE

## ASHTRAYS AND LITTERBINS *continued*



p47



p48 SM1070/SM1060



p49



p49



p49

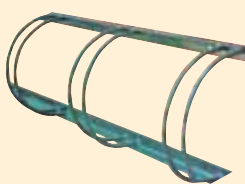


p50 SM1050

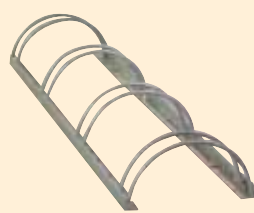


p50 SM1050

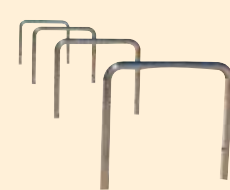
## BIKE RACKS



p51 B002



p51 B002



p52



p52

## BOLLARDS



p53



p53



p54 B020



p54 B040



p54 B060



p54 B080



p55 3307



p55 3031



p56 3024



p56 3402



p57 3311



p57 3029



p57 3201



p58 3304



p58 3305

## CROWD STANDS



p59 R2D



p59



p60

# PRODUCT PAGE

## HAND DRYERS



p61 PXQ-188B



p61 ZYQ-138



p62 GSQ250



p62 GSX-2000

## PLANTERS



p63



p64



p65



p65



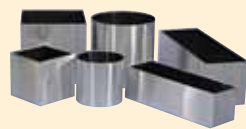
p66



p67



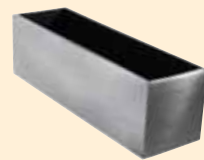
p67



p68



p68



p68

## SEATING



p69



p69



p71 S1090



p72 S1090



p73 S1070



p74 S1070



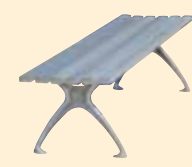
p74 S1070



p74 S1070



p75 S175



p75 S175



p76 S175



p76 S175



p77 S178



p77 S178



p78 S050



p78 S050



p78 S050



p79 S110



p79 S107



p79 S109



p80 S103



p80 S105



p81 C0035



p81 C0010



p82 C0075

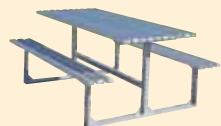


# PRODUCT PAGE

## SEATING *continued*



p83 C0020



p83 C0020



p83 C0070



p84 CS100



p84 CS100

## SOFT FURNITURE



p86



p86



p87



p88

## SHELTERS



p89 BS300



p89



p90



p90





# PROJECTS

P R O J E C T S





# PROJECTS





# PROJECTS





# ASHTRAYS



CA2

### CA2 Wall Ashtray

Code: 09 ASHTRAYS CA2 S/S

**Dimensions:** 100mm W x 50mm D x 200mm H

**Features:** 304# S/S, satin finish body, S/S mirror finish liner with security attachment.



HDA50

### HDA50 Wall Ashtray

Code: 09 ASHTRAYS HDA50 S/S

**Dimensions:** 300mm W x 75mm D x 400mm H

**Features:** 304# S/S, satin finish, includes keyed lock, 4ltr galvanised metal liner.



HDA60

### HDA60 Post Ashtray

Code: 09 ASHTRAYS HDA60 Post S/S

**Dimensions:** 125mm D x 1000mm H

**Features:** 304# S/S, satin finish body, includes keyed lock, heavy duty mount plate.



### HDA60 Wall Ashtray

Code: 09 ASHTRAYS HDA60 S/S

**Dimensions:** 125mm D x 275mm H

**Features:** 304# S/S, satin finish, includes keyed lock, 1ltr metal liner.



HDA60



# ASHTRAYS & LITTERBINS



CA6

### CA6 Wall Ashtray

Code: 09 ASHTRAYS CA6 S/S  
 Dimensions: 110mm back, 40mm front H  
 x 235mm W x 115mm D  
 Features: 304# S/S, mirror finish,

### HDA50 Bank ATM Receipt Unit

Code: 09 ASHTRAYS HDA50 ATM S/S  
 Dimensions: 400mm H, 300mm W 75mm D  
 Features: 304# S/S, satin finish,  
 includes keyed lock.



HDA50



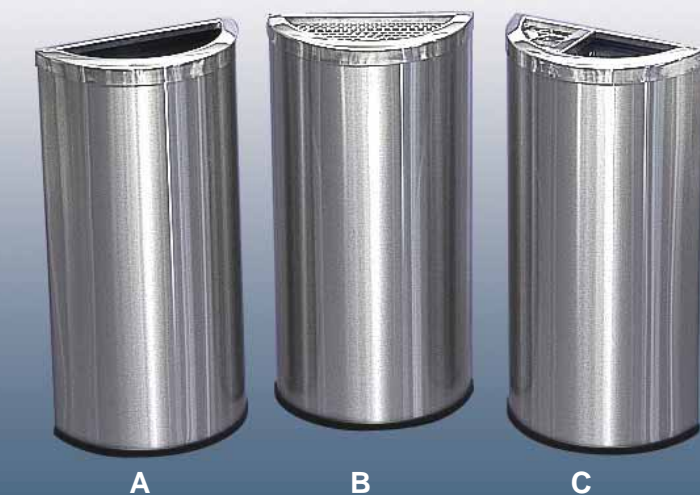
CA7

### CA7 Floor Ashtray

Code: 09 ASHTRAYS CA7 S/S  
 Dimensions: 110mm back, 70mm front H  
 x 300mm W x 135mm D  
 Features: 304# S/S, mirror finish.



300A

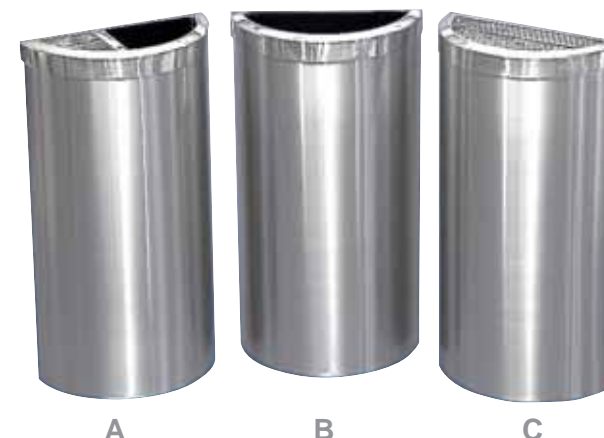


### 300A Half Round Litterbin, Ashtray & Ash/Litterbin

Code: A. 01 LITTERBINS 1-1 1/2 RD L300A S/S  
 B. 01 LITTERBINS 1-1 1/2 RD A300A S/S  
 C. 01 LITTERBINS 1-1 1/2 RD CA300A S/S

Dimensions: 300mm dia x 600mm H  
 Liner Type & Capacity: Galvanised metal liner.  
 A. & C. 16 ltrs, B. N/A  
 Features: 304# S/S, satin finish body, mirror finish tops.  
 Models B & C come with lift out ashtrays.

400B

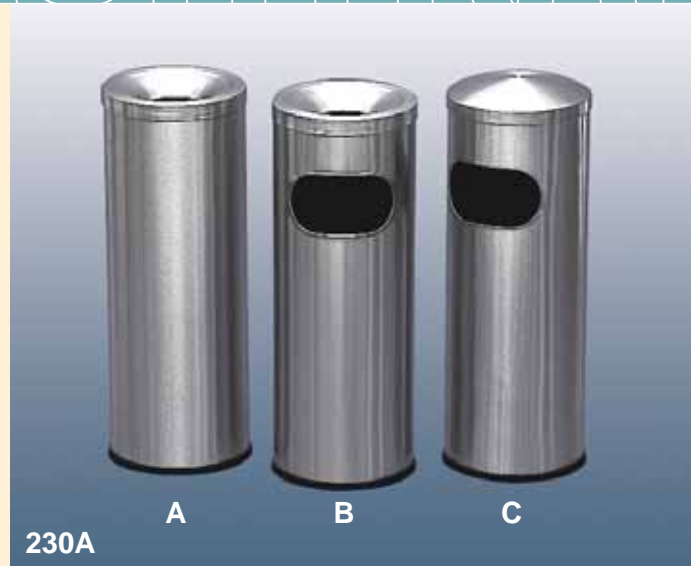


### 400B Half Round Ash/Litterbin, Litterbin & Ashtray

Code: A. 01 LITTERBINS 4-2 1/2 RD CA400B S/S  
 B. 01 LITTERBINS 4-2 1/2 RD L400B S/S  
 C. 01 LITTERBINS 4-2 1/2 RD A400B S/S

Dimensions: 400mm dia x 750mm H  
 Liner Type & Capacity: Galvanised metal liner.  
 A. & B. 31 ltrs, C. N/A  
 Features: 304# S/S, satin finish body, mirror finish tops.  
 Models A & C come with lift out ashtrays.

# ASHTRAYS & LITTERBINS



230A

A

B

C



360B

A

B

## 230A Round Ashtray, Ash/Litterbin & Litterbin

Code: A. 01 LITTERBINS A230A S/S  
 B. 01 LITTERBINS CA230A S/S  
 C. 01 LITTERBINS L230A S/S

**Dimensions:** 230mm dia x 600mm H  
**Liner Type & Capacity:** Galvanised metal liner.  
 A. 16 ltrs, B & C. 10 ltrs.

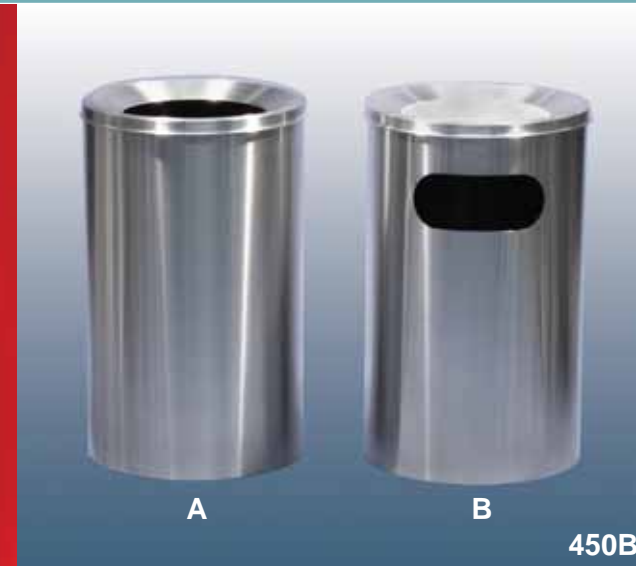
**Features:** 304# S/S, satin finish body.  
 Models A & B come with a lift out ashtrays.

## 360B Round Litterbin & Ash/Litterbin

Code: A. 01 LITTERBINS 4 L360B S/S  
 B. 01 LITTERBINS 4 CA360B S/S

**Dimensions:** 360mm dia x 750mm H  
**Liner Type & Capacity:** Galvanised metal liner.  
 A. 50 ltrs, B. 30 ltrs.

**Features:** 304# S/S, satin finish body & tops.  
 Model B comes with lift out ashtray.



A

B

450B

## 450B Round Litterbin & Ash/Litterbin

Code: A. 01 LITTERBINS 5 L450B S/S  
 B. 01 LITTERBINS 5 CA400B S/S

**Dimensions:** 450mm dia x 750mm H  
**Liner Type & Capacity:** Galvanised metal or plastic liner.  
 A. 75 ltrs, B. 50 ltrs

**Features:** 304# S/S, satin finish body & tops.  
 Model B comes with lift out ashtray.



A

B

600B

## 600B Round Litterbin & Ash/Litterbin

Code: A. 01 LITTERBINS 6 L600B S/S  
 B. 01 LITTERBINS 6 CA600B S/S

**Dimensions:** 600mm dia x 750mm H  
**Liner Type & Capacity:** Galvanised metal or plastic liner.  
 A. 120 ltrs, B. 80 ltrs

**Features:** 304# S/S, satin finish body & tops.  
 Model B comes with lift out ashtray.



# ASHTRAYS & LITTERBINS



230A 400B

A B

## 230A Square Litterbin, Ash/Litterbin & Ashtray

Code: A. 01 LITTERBINS 1 SQ L230A S/S  
 B. 01 LITTERBINS 1 SQ CA230A S/S  
 C. 01 LITTERBINS 1 SQ A230A S/S

**Dimensions:** 230mm sq x 600mm H

**Liner Type & Capacity:** Galvanised metal liner.

A. 20 ltrs, B. 12 ltrs, C. N/A.

**Features:** 304# S/S, satin finish body, mirror finish tops.  
 Models B & C come with lift out ashtrays.

## 400B Square Ash/Litterbin & Litterbin

Code: A. 01 LITTERBINS 4-2 SQ CA400B S/S  
 B. 01 LITTERBINS 4-2 SQ L400B S/S

Also available as ashtray only version.

**Dimensions:** 400mm sq x 750mm H

**Liner Type & Capacity:** Galvanised metal liner.

A. 61 ltrs, B. 75 ltrs.

**Features:** 304# S/S, satin finish body & top.  
 Model A comes with a lift out ashtray.

## L380 Rectangular Swing Bin

Code: 01 LITTERBINS 9 L380 RECT SWING TOP

**Dimensions:** 795mm H x 380mm W x 220mm D

**Liner Type & Capacity:** Galvanised metal liner. 38 ltrs.

**Features:** 304# S/S, satin finish body.



L380



L400

## L400 Dome Push Lid Bin

Code: 01 LITTERBINS 4-1 L400 DOME PUSH LID

**Dimensions:** 400mm dia x 900mm H

**Liner Type & Capacity:** Galvanised metal liner. 55 ltrs.

**Features:** 304# S/S, satin finish body,  
 mirror finish top, 'PUSH' opening.



## L345 Round Swing Top Bin

Code: 01 LITTERBINS 9 L345 SWING TOP

**Dimensions:** 345mm dia x 745mm H

**Liner Type & Capacity:** Galvanised metal liner. 45 ltrs.

**Features:** 304# S/S, satin finish body & top.



L345



# LITTERBINS



L400R

### L400R Olympic Toilet Bin

Code: 01 LITTERBINS 5-3 L400R OLYMPIC BIN

**Dimensions:** 600mm H x 400mm W x 200mm D

**Features:** Stainless steel wall mounted litterbin, comes with internal bag clips.

### LTR010 Tray Return Litterbin

Code: 02 TRAY RETURNS LTR010 SINGLE

**Dimensions:** 535mm sq x 1000mm H

**Features:** MDF construction with a Laminate or Timber veneer finish. Stainless steel top, door trim and kick plate. 80 ltr plastic liners.



LTR010

### UB1 Umbrella Stand

Code: 11 UMBRELLA STANDS UB1 230

**Dimensions:** 230mm dia x 600mm H

**Features:** Fibre glass lining,  
A. Powdercoat finish stock colour black.  
B. Satin Stainless steel finish.



UB1

### WPT Wastepaper Bins

Code: 10 WASTEPAPER BINS WPT 225 X 300 H

A. WPT Powdercoat

B. WPT Stainless Steel

**Dimensions:** 230mm dia x 300mm H

**Capacity:** A. 12 ltrs.

**Features:** Satin S/S body or metal powdercoated body.  
Model A comes with mirror stainless bag holder rim.



A



B





# ASHTRAYS & LITTERBINS



## RMP Plastic Litterbins

Code: A. 01 LITTERBINS 7 RMP2000-360  
 B. 01 LITTERBINS 7 RMP2000-450  
 C. 01 LITTERBINS 7 RMP2000-600

**Dimensions:**  
 A. 360mm dia x 750mm H  
 B. 450mm dia x 750mm H  
 C. 600mm dia x 750mm H

**Liner Type & Capacity:** Bag retainer system.

**Features:**  
 A. 190 ltrs B. 110 ltrs C. 75 ltrs.  
 Molded polyethylene body. Stock colour Black; Blue & Granite are available at request. Aluminum top with Bag retainer system. Large top openings. Suitable for bulky items such as popcorn containers, large drink cups etc. Optional ashtray insert.



A

B

C



M300



B

## M300 Ashtray Litterbin

Code: A. 01 LITTERBINS 8 MARB CAM300  
 B. 01 LITTERBINS 8 MARB AM300  
 C. 01 LITTERBINS 8 MARB LM300

**Dimensions:** 300mm sq x 650mm H

**Liner Type & Capacity:** Galvanised metal liner.

**Features:**  
 A. B. & C. 30 ltrs.  
 Brass plated trim with Sandstone or Black Marble panels. Model B comes with lift out ashtray.

## G340 Glass Top Ash/Litterbin

Code: A. 01 LITTERBINS 8 G340 GLASS TOP

**Dimensions:** 340mm sq x 750mm H

**Liner Type & Capacity:** Galvanised metal liner. 30 ltrs.

**Features:**  
 Brass plate trim, black body, glass ashtray top.



G340



A

# LITTERBINS



R400

## R400 Dual Recycle Bin

Code: 06 RECYCLE BINS R400 DUAL

Dimensions: 400mm dia x 750mm H x 2 bins

Features: Stainless steel construction with a satin finish, one section litter and one section bottles/cans. Includes internal liners 76 ltrs, signage available. Also available in a single or triple unit.

## R745 Recycle Bin

Code: 06 RECYCLE BINS R745

Dimensions: 880mm H x 700mm W x 360mm D

Features: Stainless steel construction with a satin finish, one section litter and one section bottles/cans. Includes internal liners 2 x 33 ltrs, signage available.



R745



R1600

## R1600 Recycle Bin

Code: 06 RECYCLE BINS R1600

Dimensions: 1600mm W x 535mm D x 1000mm H

Features: MDF construction with a laminate or timber veneer finish. Stainless steel top, door trim and kick plate. Includes internal liners 3 x 80 ltrs, signage available. Also available in a single or triple unit.

## R2100 Recycle Bin

Code: 06 RECYCLE BINS R2100

Dimensions: 2100mm W x 830mm D x 1350mm H

Features: Manufactured to suit 3 x 240 ltr wheelie bins, galvanised steel construction with a powdercoat finish, divider panels, hinged doors with key lock, stainless steel top & spring flap.



R2100



# LITTERBINS



## LT480 Stainless Steel Litterbin

Code: A. 01 LITTERBINS 5-2 LT480 TRI BIN S/S

B. 01 LITTERBINS 5-2 LT480 TRI BIN AVESTA S/S

**Dimensions:** 480mm dia x 850mm H

**Liner Type & Capacity:** Galvanised metal liner, 110 ltrs.

**Features:** Stainless steel #304 satin finish or Avesta pattern finish, polished aluminium top & bottom trim. Hinged door with heavy duty lock.



# LITTERBINS



LS480



LS480

LS480

### LS480 Stainless Steel Litterbin

Code: A. 03 LITTERBINS 2 LS480 S/S  
**Dimensions:** 480mm dia x 750mm H  
**Liner Type & Capacity:** Metal or Plastic liner, 60 ltrs.  
**Features:** Stainless steel 304# (satin finish shown), stainless steel top & bottom trim, top hinged to bin.

### LS480 Timber Slat Litterbin

Code: A. 03 LITTERBINS 2 LS480 T/SLAT  
**Dimensions:** 480mm dia x 750mm H  
**Liner Type & Capacity:** Metal or Plastic liner, 70 ltrs.  
**Features:** 20 x 40 timber slat body with a Jarrah stain, polished stainless steel top & bottom trim.



B L450B

### L450B Timber Slat Litterbin

Code: A. 01 LITTERBINS 5 L450B T/S  
**Dimensions:** 450mm dia x 750mm H  
**Liner Type & Capacity:** Metal or Plastic liner, 70 ltrs.  
**Features:** 20 x 40 hardwood timber slat body. 304# S/S top & bottom trim.  
 A. Jarrah stain  
 B. Victorian Ash stain



A L450B



L600B

### L600B Timber Slat Litterbin

Code: 01 LITTERBINS 6 L600B T/S  
**Dimensions:** 600mm dia x 750mm H  
**Liner Type & Capacity:** Metal liner, 100 ltrs.  
**Features:** 20 x 40 timber slat body with Jarrah (pictured) or Victorian Ash stain, 304# S/S top & bottom trim.



# LITTERBINS



## LSM480 Stainless Steel Slot Perforated Litterbin

Code: A. 03 LITTERBINS 2 LSM480 PERF SLOT S/S 304#

**Dimensions:** 480mm dia x 750mm H

**Liner Type & Capacity:** Galvanised Metal liner, 60 ltrs.

**Features:** Slot perforated brushed stainless steel body, polished stainless steel top & bottom trim, top hinged to bin, freestanding or bolted to the ground.



# LITTERBINS



**LSM480 Perforated Litterbin**

Code: 03 LITTERBINS 2 LSM480 PERF SLOT  
 Dimensions: 480mm dia x 750mm H (without base 600mm H)  
 Liner Type & Capacity: Galvanised Metal liner, 60 ltrs.  
 Features: Slot perforated powdercoated body, stainless steel top & bottom trim, top hinged to bin, freestanding or bolted to the ground.

**LSM480 Stainless Steel Litterbin**

Code: 03 LITTERBINS 2 LSM480 S/S 304# 1.5MM  
 Dimensions: 480mm dia x 750mm H  
 Liner Type & Capacity: Galvanised Metal liner, 60 ltrs.  
 Features: Solid stainless steel body, stainless steel polished top & bottom trim, top hinged to bin, freestanding or bolted to the ground.

**LSM480 Timber Slat Litterbin**

Code: 03 LITTERBINS 2 LSM480 T/SLAT  
 Dimensions: 480mm dia x 750mm H  
 Liner Type & Capacity: Galvanised Metal liner, 60 ltrs.  
 Features: 20 x 40 Jarrah Hardwood timber slats (A) or 63 x 30 Anodised Aluminium slats (B). Stainless steel top & bottom trim, freestanding or bolted to the ground.





# LITTERBINS



A



B



C



C

## LSM480 Pattern Litterbin

Code: A. 03 LITTERBINS 2 LSM480 TC1  
 B. 03 LITTERBINS 2 LSM480 TC2  
 C. 03 LITTERBINS 2 LSM480 TP1  
 D. 03 LITTERBINS 2 LSM480 TP2

**Dimensions:** 480mm dia x 750mm H

**Liner Type & Capacity:** Galvanised Metal liner, 60 ltrs.

**Features:** Patterned body (various finishes shown), stainless steel top & bottom trim, optional shopping trolley bumper strip, top hinged to bin, freestanding or bolted to the ground.



D



# LITTERBINS



## FE570 Litterbin

Code: A. 03 LITTERBINS 3 FE570

**Dimensions:** 570mm sq x 1125mm H

**Liner Type & Capacity:** Galvanised metal liner, 100 ltrs.

**Features:**  
 A. Stone panels.  
 B. S/S panels all with galvanised & powdercoated metalwork. Hinged top with heavy duty lock.



## Single & Double Bin Holders

Code: A. 08 BIN HOLDERS SM1070 DBL PUSH LOCK  
 B. 08 BIN HOLDERS SM1060 SGL PUSH LOCK  
 C. 08 BIN HOLDERS SM1060 WMT PUSH LOCK

**Dimensions:** 150mm sq base plate x 1100mm H

**Features:**  
 (Optional longer post to concrete into ground)  
 Cast aluminium top bin clamp, galvanised steel bottom bracket & post with a powdercoat finish, single bin holder suitable to hold standard 240 & 120 ltr bins. Includes keyed push lock.



# LITTERBINS



## Bin Surrounds

Code: A. 07 BIN SUR SM1010 BELMONT PCT

B. 07 BIN SUR SM1020 HERITAGE

C. 07 BIN SUR SM1040 BELMONT T/CLAD

**Dimensions:** 850mm D x 760mm W x 1180mm H

**Features:** 1.5mm thick galvanised solid body with powdercoat finish. Domed top with 2 x elongated litter openings, includes heavy duty lock. Optional Heritage trim (B) or 20 x 40 Jarrah Hardwood Slats (C).



## SM1050 Bin Surrounds

Code: A. 07 BIN SUR SM1050 STAINLESS STEEL

B. 07 BIN SUR SM1050 POWDERCOAT

**Dimensions:** 810mm D x 700mm W x 1100mm H

**Features:** 1.5mm thick galvanised/stainless steel solid body. Stainless steel top, includes heavy duty lock.



# BIKE RACKS



## B002 Bike Racks

Code: 14 BIKE RACKS B002 4 BIKE & 6 BIKE

Dimensions: 1780mm (4 bike) & 2885mm (6 bike) x 450mm W

Features: Hot dipped galvanised steel construction, suitable for floor (photo A), wall (photo B) and post mounting (not shown), optional powdercoat finish.



## Hoop & Loop Bike Racks

Code: A. 14 BIKE RACKS LOOP INGROUND

B. 14 BIKE RACKS HOOP INGROUND

Dimensions: Loop – 900mm W x 900mm H

Hoop – 750mm W x 900mm H

Features: 50mm diameter stainless steel tubing, 300mm inground extension for inground mounting, optional above ground mounting plate available.





# BOLLARDS

## 219mm & 125mm S/S Bollards

Code: A. 16 BOLLARDS S/S 219mm DIA  
 B. 16 BOLLARDS S/S 125mm DIA

**Dimensions:** A. 219mm dia x 900mm H  
 B. 125mm dia x 900mm H

**Features:** 3.75mm (219mm dia) & 3.0mm (125mm) thick heavy duty stainless steel tube with satin/polished finish. Inground or above ground mounting.



## B020 Bollards

Code: 16 BOLLARDS B020

**Dimensions:** 132mm dia x 1070mm H

**Features:** Heritage design, cast aluminium construction, with a powdercoat finish, available with a square base plate or below ground mount.

## B040 Bollards

Code: 16 BOLLARDS B040

**Dimensions:** 115mm dia x 900mm H

**Features:** Galvanised steel tubing, cast top piece with 2 x 25mm high ring detail, domed top, powdercoat finish all one colour, available with a square base plate or below ground mount.

## B060 Bollards

Code: 16 BOLLARDS B060

**Dimensions:** 115mm dia x 750mm H

**Features:** Powdercoat tubing with stainless steel trim, available with below ground mount.

## B080 Bollards

Code: 16 BOLLARDS B080

**Dimensions:** 230mm L x 130mm D x 900 H

**Features:** Extruded aluminium construction, with an anodised finish, polished cast aluminium top, polished cast bottom with mounting holes to surface mount.



# BOLLARDS



3307

## 3307 Light Bollards

Code: 16 BOLLARDS LIGHT 3307

**Dimensions:** 219mm dia x 850mm H

**Features:** Heavy duty cast aluminium construction with a powdercoat finish, dome top, hidden lenses protected by louvers, fixed mounting, IP45 rating, quick installation.



3031

## 3031 Light Bollards

Code: 16 BOLLARDS LIGHT 3031

**Dimensions:** 219mm dia x 800mm H

**Features:** Heavy duty cast aluminium construction with a powdercoat finish, cone top, fixed mounting, IP25 rating, quick installation.



3024

## 3024 Light Bollards

Code: 16 BOLLARDS LIGHT 3024

**Dimensions:** 150mm dia x 800mm H

**Features:** Heavy duty cast aluminium construction with a powdercoat finish, dome top, hidden lenses protected by louvers, base plate mounted, IP45 rating, quick installation.



3402

## 3402 Light Bollards

Code: 16 BOLLARDS LIGHT 3402

**Dimensions:** 170mm dia x 800mm H

**Features:** Heavy duty cast aluminium construction with a powdercoat finish, hidden lenses protected by louvers, fixed mounting, IP45 rating, quick installation.



# BOLLARDS



3311

### 3311 Light Bollards

Code: 16 BOLLARDS LIGHT 3311  
 Dimensions: 165mm dia x 800mm H  
 Features: Heavy duty cast aluminium construction with a powdercoat finish, base plate mounted, IP45 rating, quick installation.



3029

### 3029 Light Bollards

Code: 16 BOLLARDS LIGHT 3029  
 Dimensions: 241mm wide x 900mm H  
 Features: Heavy duty cast aluminium construction with a powdercoat finish, hidden lenses protected by louvers, base plate mounted, IP45 rating, quick installation.



3201

### 3201 Light Bollards

Code: 16 BOLLARDS LIGHT 3201  
 Dimensions: 260mm dia x 970mm H  
 Features: Cast aluminium construction with a powdercoat finish, fixed mounting, IP45 rating, quick installation.

### 3304 Light Bollards

Code: 16 BOLLARDS LIGHT 3304  
 Dimensions: 280mm W x 400mm D x 250mm H  
 Features: Cast aluminium construction with a powdercoat finish, fixed mounting, IP35 rating, quick installation.



3304



3305

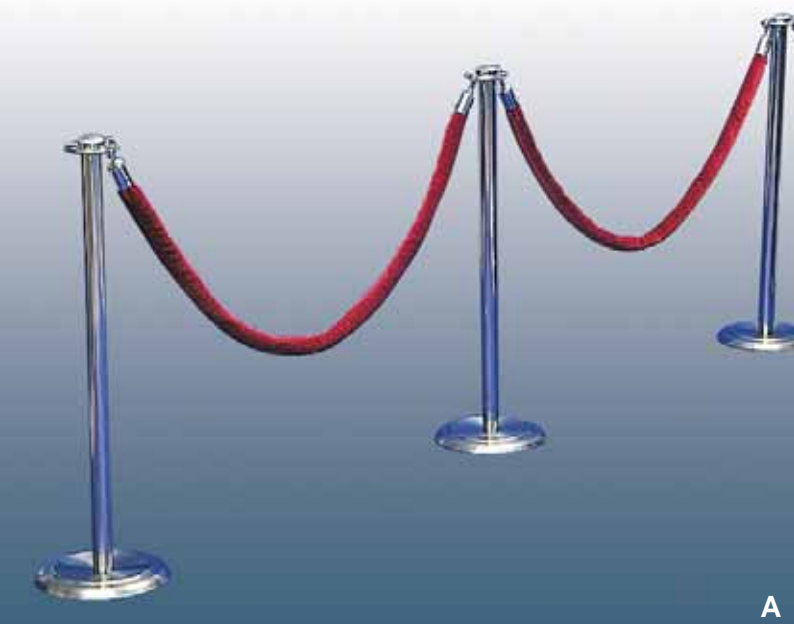
### 3305 Light Bollard

Code: 16 BOLLARDS LIGHT 3305  
 Dimensions: 270mm dia x 285mm H  
 Features: Cast aluminium construction with a powdercoat finish, fixed mounting, IP45 rating, quick installation.



# CROWD STANDS

S  
D  
S  
A  
T  
S  
D  
W  
O  
C



A

## R2D Crowd Control Stands

Code: A. 12 CROWD STANDS 2 R2D S/S  
B. 12 CROWD STANDS 3 ROPE CLIP ENDS

**Dimensions:** A. 250mm dia x 850mm H  
B. 40mm dia x 1500mm L

**Features:** A. Polished stainless steel stand with weighted base and universal cap.  
B. Velvet rope available in blue, red and black, complete with clip ends.



B

## Tension Barriers

Code: A. 12 CROWD STANDS 1 TENSION BARRIERS

**Dimensions:** 400mm dia x 900mm H x 1800mm long webbing

**Features:** Polished stainless steel stand with weighted base, four way webbing connector, webbing locking system, webbing colours available in blue, red and black. Optional powercoat stand & wall clip.



A

## Sign Frames

Code: A. 13 SIGNHOLDERS 1 A4 R2D  
B. 13 SIGNHOLDERS 1 A3 R2D

**Dimensions:** A. 210mm W x 300mm H  
B. 300mm W x 425mm H

**Features:** Polished stainless steel frames complete with clear Perspex and cap to attach to R2D stand & tension barriers.





# HAND DRYERS

## PXQ-188B Perfume Dispenser

Code: 40 BATHROOM PRODUCTS PXQ-188B

**Dimensions:** 120mm W x 90mm D x 205mm H

**Features:** Strong plastic unit, remote control spray intervals (5min-4hrs), spraying times (1-3), day/night, 24hrs, DC 2 x 1.5v voltage.



PXQ-188B

## ZYQ-138 Soap Dispenser

Code: 40 BATHROOM PRODUCTS ZYQ-138

**Dimensions:** 80mm W x 93mm D x 193mm H

**Features:** Strong plastic unit, suitable for liquid shower gel, shampoo, washing lotion etc. Dispensers 1.5mL droplets.

**Capacity:** 380mL



ZYQ-138



GSQ250

## GSQ250 Hand Dryer

Code: 40 BATHROOM PRODUCTS GSQ250

**Dimensions:** 270mm W x 200mm D x 240mm H

**Features:** Stainless steel casing with cast aluminium base & outlet. Digital circuit, infrared sensor control auto on/off, 360 degree revolving air outlet, 220v voltage with 2500w power.

## GSX-2000 Hand Dryer

Code: 40 BATHROOM PRODUCTS GSX-2000

**Dimensions:** 268mm W x 150mm D x 206mm H

**Features:** Cast aluminium casing with white finish. Infrared sensor control auto on/off, waterproof construction, overheating protection, 220v voltage with 1600w power.



GSX-2000



# PLANTERS



FIBREGLASS PLANTER

## Fibreglass Planter

Code: 23 FIBREGLASS PLANTERS

**Features:** Fibreglass waterproof construction with gloss gelcoat finish. Available in Black, White, Beige, Dove Grey and Charcoal.

**Standard Sizes:**

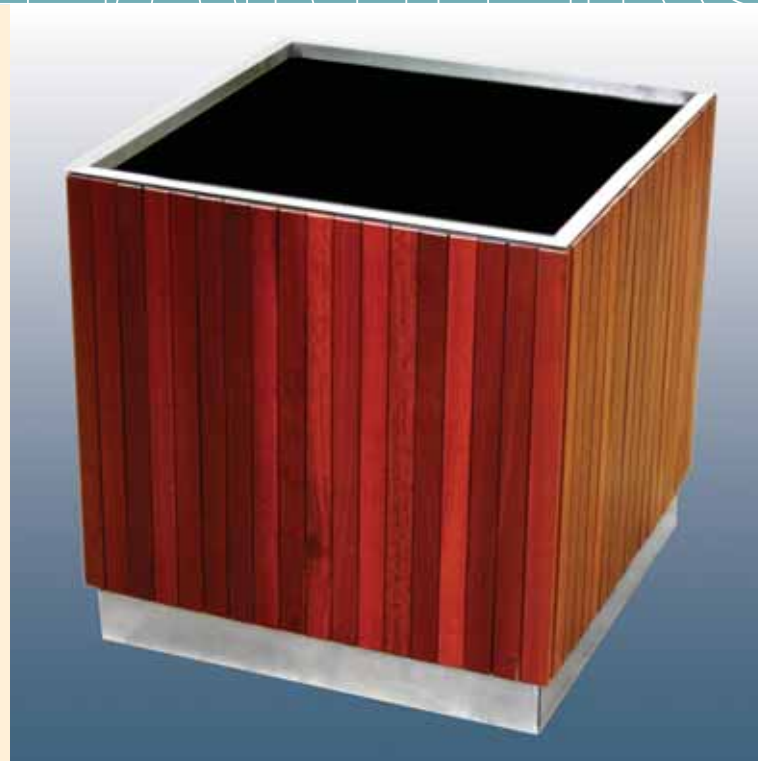
**Rectangular:** 1200mm L x 600mm D x 510mm H  
1215mm L x 1000mm D x 520mm H  
1220mm L x 990mm D x 750mm H  
1800mm L x 610mm D x 530mm H  
2000mm L x 270mm D x 300mm H  
2000mm L x 900mm D x 640mm H

**Round:** 430mm dia x 875mm H  
460mm dia x 720mm H  
900mm dia x 900mm H  
1200mm dia x 900mm H  
1850mm dia x 450mm H  
2000mm dia x 500mm H

**Square:** 1200mm sq x 510mm H  
1800mm sq x 500mm H



# PLANTERS



## Timber Slat Planter

Code: 22.1 T/SLAT PLANTERS

**Features:** Steel construction with timber slat cladding and fiberglass lining. Jarrah or Victorian Ash timber stains are available. Timber slat planters can be manufactured to your requirements. Standard sizes available.

**Round:** 450mm dia x 750mm H  
600mm dia x 750mm H



TIMBER SLAT PLANTERS



STAINLESS STEEL PLANTER



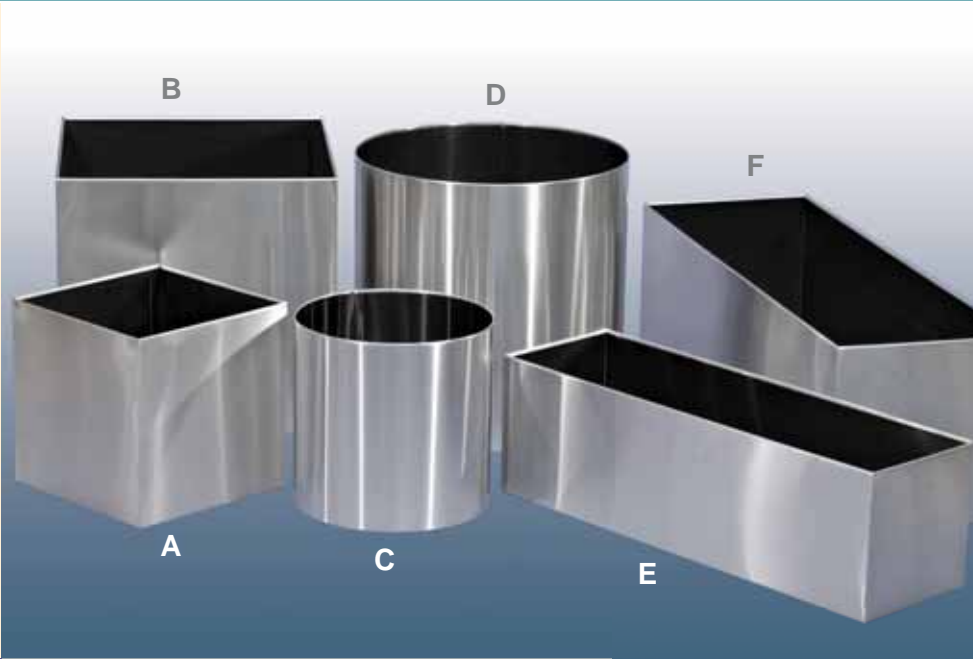
# PLANTERS



## Stainless Steel Planter

Code: 22 METAL PLANTERS

**Features:** 304g Stainless Steel construction with a satin finish and waterproof fiberglass lining. Includes folded top edge, optional rim edge, feet or castors are available. Stainless Steel planters are available in various sizes and can be manufactured to your requirements. Powdercoat and Brass planters can also be manufactured at your request.



## S/S Planters – Standard Sizes

- Square:**
  - A. 400mm sq x 400mm H
  - B. 600mm sq x 600mm H
- Round:**
  - C. 400mm dia x 400mm H
  - D. 600mm dia x 600mm H
- Rectangular:**
  - E. 900mm W x 300mm D x 300mm H
  - F. 1200mm W x 400mm D x 400mm H
  - G. 1500mm W x 500mm D x 500mm H
- Tapered:**
  - H. 430mm W x 430mm D x 1000mm H





# SEATING



## Internal Perforated Seating

Code: 18 CONTOURED SEATS H103 (1 SEATER)  
18 CONTOURED SEATS H203 (2 SEATER)  
18 CONTOURED SEATS H303 (3 SEATER)  
18 CONTOURED SEATS H403 (4 SEATER)  
18 CONTOURED SEATS H503 (5 SEATER)

**Dimensions:** 640mm L x 680mm W x 800mm H (H103)  
1220mm L x 680mm W x 800mm H (H203)  
1800mm L x 680mm W x 800mm H (H303)  
2420mm L x 680mm W x 800mm H (H403)  
2960mm L x 680mm W x 800mm H (H503)

**Features:** Steel perforated construction with a silver powdercoat finish and Polished Chrome frame work. All seat lengths are also available with Vinyl upholstery. Available with or without armrests.



# SEATING



## S190 Timber Slat Seat

Code: 18 CONTOURED SEATS S190

**Dimensions:** 1800mm L x 514mm W x 776mm H

**Features:** 63 x 30 Anodised Aluminium slats (A) or Hardwood timber slats with a Jarrah stain (B). Cast aluminium frames with a Polished finish for internal use and silver powdercoat frames with surface mount fixings for external use. Available with or without armrests.





# SEATING



## S170 Timber Slat Seat

Code: 18 CONTOURED SEATS S170

Dimensions: 1800mm L x 500mm W x 790mm H

Features: 63 x 30 Hardwood timber slats with a Jarrah stain (A), Anodised Aluminium slats (B) or Faux Timber Aluminium Slat (C). Cast aluminium frames with a Polished finish for internal use and silver powdercoat frames with surface mount fixings for external use. S170 seat is also available as a wall mount seat (D). Available with or without armrests.





# SEATING



## S175 Timber Slat Bench Seat

Code: 17 BENCH SEATS S175

**Dimensions:** 1800mm L x 450mm W x 450mm H

**Features:** 63 x 30 Hardwood timber slats with a Jarrah stain (A) or Anodised Aluminium slats (B). Cast aluminium frames with a Polished finish for internal use and silver powdercoat frames with surface mount fixings for external use. S175 seat is also available as a wall mount seat (C) & curved seat (D).





# SEATING



## S178 Timber Slat Bench Seat

Code: 17 BENCH SEATS S178

**Dimensions:** 1800mm L x 670mm W x 450mm H

**Features:** 63 x 30 Hardwood timber slats with a Jarrah stain (A) or Anodised Aluminium slats (B). Cast aluminium frames with a Polished finish for internal use and silver powdercoat frames with surface mount fixings for external.



## S050 Bench Seat

Code: 17 BENCH SEATS S050

**Dimensions:** 1800mm L x 335mm W x 450mm H

**Features:** 63 x 30 Anodised Aluminium slats or Hardwood timber slats with a Jarrah stain. Galvanised steel frame work with a silver powdercoat finish. Available with base plates for surface mounting and post extension for in-ground mounting.

## S050 Bench Seat with Backrest

Code: 17 BENCH SEATS S050 WITH BACKREST

**Dimensions:** 1800mm L x 400mm W x 790mm H

**Features:** 63 x 30 Anodised Aluminium slats or Hardwood timber slats with a Jarrah stain. Galvanised steel frame work with a silver powdercoat finish. Available with base plates for surface mounting and post extension for in-ground mounting.



## S080 Bench Seat

Code: 17 BENCH SEATS S080

**Dimensions:** 1800mm L x 320mm W x 450mm H

**Features:** 63 x 30 Anodised slats or Hardwood timber slats with a Jarrah stain. Extruded Aluminium legs with an anodised finish and base holes for surface mounting.



# SEATING



S110

## S110 Olympic Bench

Code: 20 PERFORATED SEATING S110 OLYMPIC BENCH

**Dimensions:** 2000mm L x 450mm W x 450mm H

**Features:** Galvanised steel perforated seat with a powdercoat finish. Slot perforation or 6mm round perforation is available with this seat. Available with base plates for surface mounting and post extension for in-ground mounting.



S107

## S107 Slot Perforated Bench

Code: 20 PERFORATED SEATING S107

**Dimensions:** 1800mm L x 450mm W x 450mm H

**Features:** Galvanised steel slot perforated seat with a powdercoat finish. Available with base plates wall mounting.



S109

## S109 Slot Perforated Bench

Code: 20 PERFORATED SEATING S109

**Dimensions:** 1800mm L x 300mm W x 450mm H

**Features:** Galvanised steel slot perforated seat with a powdercoat finish. Available with base plates for surface mounting and post extension for in-ground mounting.



## S103 Slot Perforated Seat

Code: 20 PERFORATED SEATING S103

**Dimensions:** 1800mm L x 750mm W x 900mm H

**Features:** Galvanised steel slot perforated seat with a powdercoat finish. Available with base plates for surface mounting and post extension for in-ground mounting.



## S105 Slot Perforated Seat

Code: 20 PERFORATED SEATING S105

**Dimensions:** 1800mm L x 750mm W x 900mm H

**Features:** Galvanised steel slot perforated seat with a powdercoat finish. Available with base plates for wall/surface mounting and post extension for in-ground mounting.





C0035

**C0035 Picnic Unit**

Code: 21 PICNIC TABLES 1 C0035 UNIT

**Dimensions:** 720mm dia x 750mm H table, 3 off 1030mm L x 310mm W x 450mm H seats

**Features:** Galvanised steel slot perforated unit with a powdercoat finish. Available with base plates for surface mounting, post extension for in-ground mounting or as a 1 piece freestanding unit. Optional 300mm dia stools and stools with backrests are available to suit this unit.



C0010

**C0010 Picnic Unit**

Code: 21 PICNIC TABLES C0010 PERF UNIT

**Dimensions:** 1800mm L x 1590mm W x 750mm H

**Features:** Galvanised steel slot perforated unit with a powdercoat finish. Available as a freestanding or fixed 1 piece unit, optional 3 piece unit with base plates for surface mounting or post extension for in-ground mounting is also available.



**C0075 Picnic Unit**

Code: 21 PICNIC TABLES C0075 TIMBER UNIT

**Dimensions:** 1800mm L x 740mm W x 750mm H table,

2 off 1800mm L x 440mm W x 450mm H bench seats

**Features:** 63 x 30 Anodised slats or Hardwood timber slats with a Jarrah stain. Cast aluminium legs with a polished or powdercoat finish. Available with fixings for surface mounting.



# SEATING



## C0020 Picnic Unit

Code: 21 PICNIC TABLES C0020 TIMBER SLAT UNIT

**Dimensions:** 1800mm L x 1370mm D x 750mm H

**Features:** 63 x 30 Anodised Aluminium slats (A) or Hardwood timber slats with a Jarrah stain (B). Galvanised steel frame work with a powdercoat finish, available as a freestanding or fixed 1 piece unit. Optional 3 piece unit with base plates for surface mounting or post extension for in-ground mounting is also available.



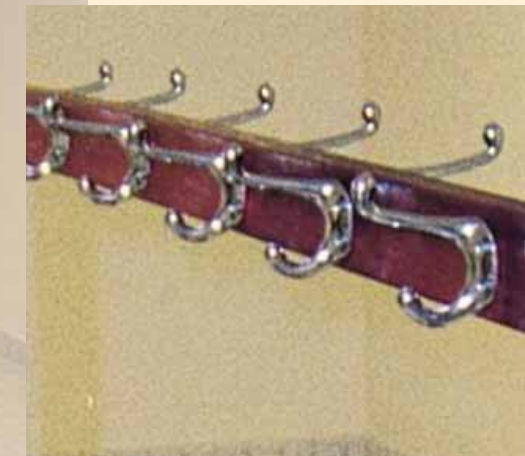
## C0070 Picnic Unit

Code: 21 PICNIC TABLES C0070 TIMBER SLAT UNIT

**Dimensions:** 1800mm L x 750mm D x 750mm H table,

2 off 1800mm L x 400mm W x 450mm H bench seats

**Features:** 63 x 30 Anodised slats or Hardwood timber slats with a Jarrah stain. Extruded Aluminium legs with an anodised finish and base holes for surface mounting.



## CS100 Double Change Room Unit

Code: 19 CHANGE ROOM SEATS CS100 DOUBLE

**Dimensions:** 1800mm L x 800mm W x 1500mm H

**Features:** Galvanised steel frame work with a powdercoat finish, available with Jarrah stained timber slats or anodised aluminium slats, freestanding or fixed mounting option. The CS100 Change Room Unit is also available as a single unit.



# SOFT FURNITURE



## Soft Furniture

Code: A. 18 SOFT FURNITURE 2 SEATER LOUNGE  
B. 18 SOFT FURNITURE LOUNGE CHAIR  
C. 18 SOFT FURNITURE COFFEE TABLE

**Dimensions:** A. 1500mm L x 800mm W x 730mm H  
B. 850mm L x 800mm W x 730mm H  
C. 800mm L x 500mm W x 470mm H

**Features:** A & B; Hardwood timber and plywood construction with non-flammable high density cushioning finish with commercial grade faux leather upholstery. Includes brushed stainless steel legs.  
C; Brushed stainless steel legs and framework finished with an 'Aspen' Smart stone table top.



# SOFT FURNITURE



## Soft Furniture

Code: A. 18 SOFT FURNITURE OTTOMAN

B. 18 SOFT FURNITURE BACK TO BACK LOUNGE

**Dimensions:** A. 1800mm L x 840mm W x 440mm H

B. 1740mm L x 1240mm W x 760mm H

**Features:** A; Hardwood timber and plywood construction with non-flammable high density cushioning finish with commercial grade faux leather upholstery. Includes brushed stainless steel legs.  
B; Includes Corian table inserts.



# SHELTERS



## BS300 Bus Shelter

Code: 24 BUS SHELTERS BS300 1 BAY

Dimensions: 3.0m L x 1.8m D x 2.2m H

Features: Galvanised steel frame work with a powdercoat finish, optional clear or tinted polycarbonate backing and side sheeting, colour bond corrugated steel roofing. Base plates are available for surface mounting or extension for in-ground mounting. Shelter is available in continuous lengths and height can be adjusted to suit all ground levels.





