



Nederlands Forensisch Instituut
Ministerie van Veiligheid en Justitie

Forensics and CBRN incidents

Training for police, fire brigade and medical staff to avoid destruction of forensic evidence at the scene of incident.

Ed van Zalen

Programme manager CBRN

12 April 2011



Content

- Introduction to the NFI
- The NFI CBRN-E programme
- Forensics
- Goals to be achieved



NFI and FIELD LAB



Agency
of the
Ministry
of
Justice



P.O. Box 24044
2490 AA The Hague
Laan van Ypenburg 6
2497 GB The Hague
The Netherlands

T +31 70 888 6 888
www.forensicinstitute.nl



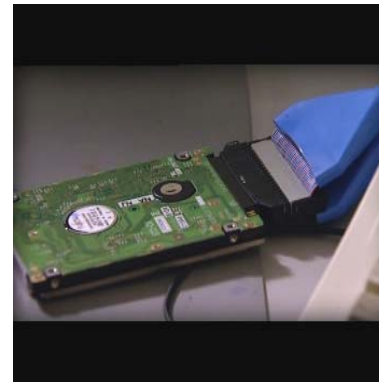
Mission

NFI provides

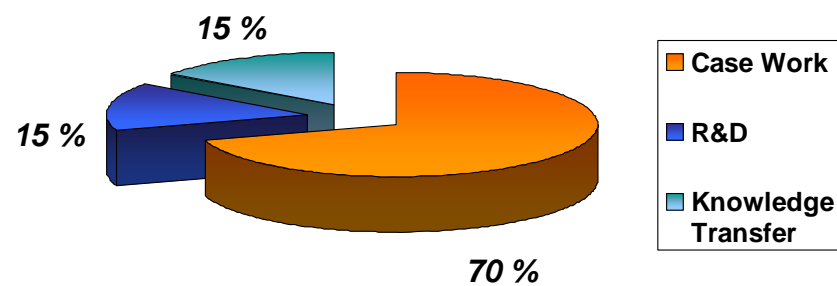
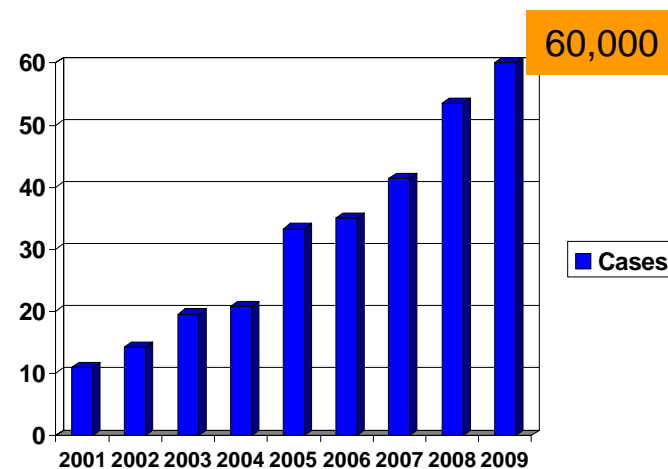
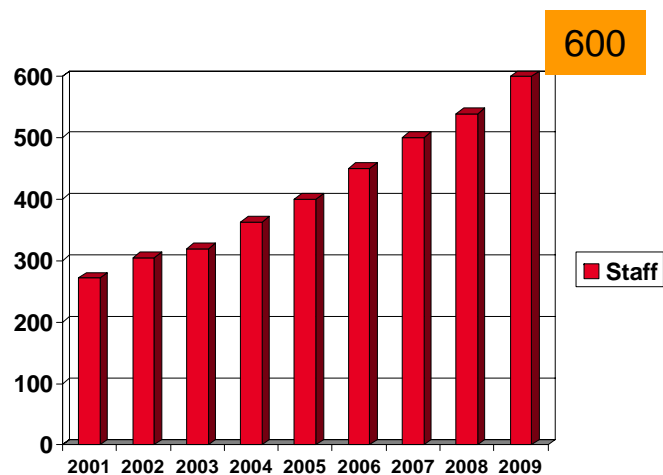
high quality **forensic services**

with **state-of-the-art technology and science**

on behalf of **clients**



Key Figures



Customers



National

**PROSECUTION
POLICE**
Magistrates

Government Agencies

for example:

- *MoD*
- *Secret Services*
- *Competition Authority*
- *Customs*
- *Tax Service*
- *Integration and*

Naturalisation

Service

International

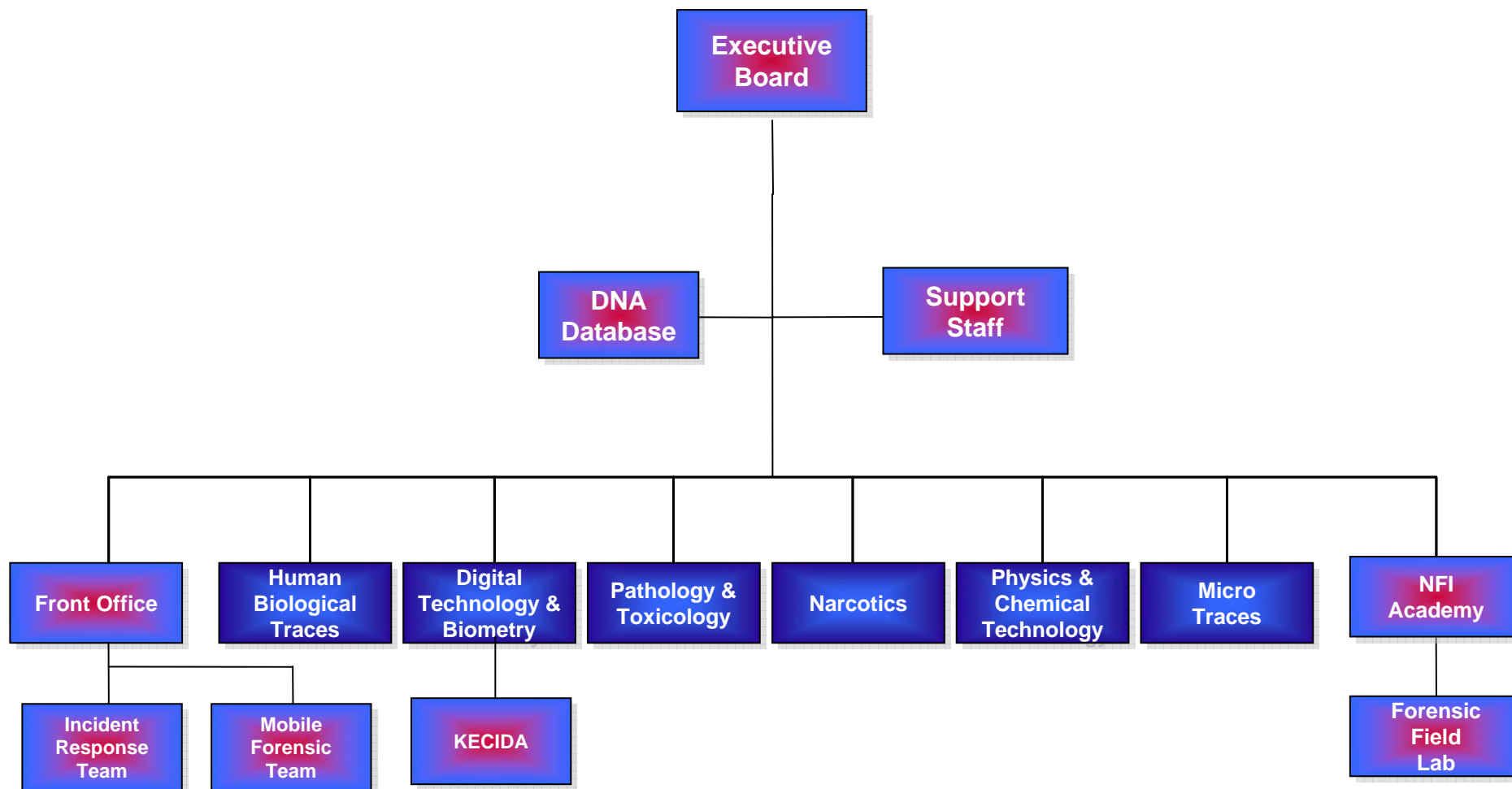
International Courts

- *International Criminal Court*
- *Former Yugoslavia*
- *Sierra Leone*
- *Libanon*

United Nations

Intl. Forensic Institutes

Customers





CBRNE programme



Chemical agents



Biologic agents



**Radioactive and
Nuclear agents**



Explosives



Forensic anthropology



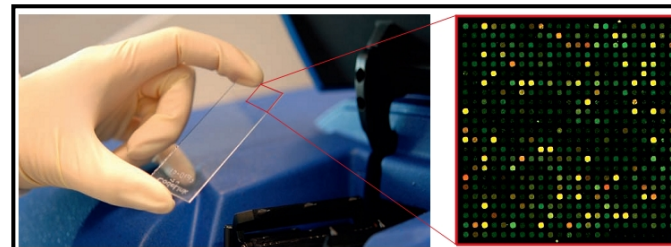
Disaster Victim Identification



Education and training



Forensic responses



Research and Development

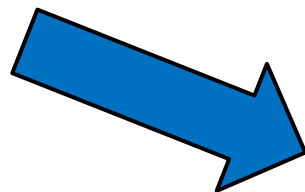


Main measures CBRN-E program

- A. Risk assessment of the scene of crime. Collection of forensic evidence material at a extensive scene of crime, when necessary personal protection means, such as a gas suit with gas masks.
- B. The investigation of contaminated evidence material should either be done under specific conditions or the material should be decontaminated.
- C. Forensic investigations on CBRN-E agents



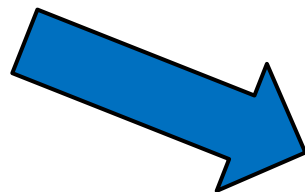
Disaster Victim Identification



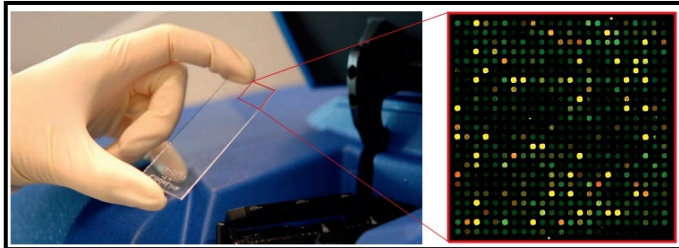
Identification of all Dutch and foreign victims within 3 weeks with the use of the DVI protocol and Bonaparte software!



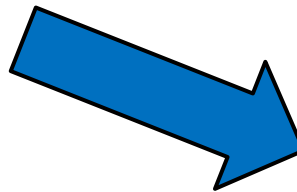
Explosives



**Assistance on the investigation of bomb attacks in Lebanon
in the periode 2005-2009**



Research and Development



- “Traditional” forensics
 - *DNA, Fingerprints, Digital*
 - *Decontamination procedures*
 - *Analysis under special conditions*
- CBRN Profiling
 - *Investigation to the source*
 - *Methodes*
 - *Databases*





January 2011, Chemie-Pack fire

Chemical incidents is there a role for forensics?

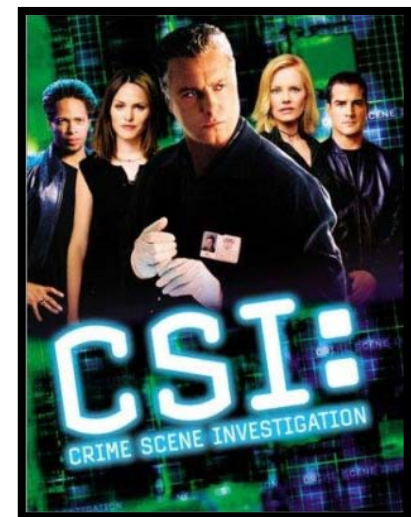




Forensics

Scope:

- Chain of custody
- Profiling
- Traditional forensics
- Analysis of the effects related to the agents
- Data mining and data analysis
- Forensic Intelligence





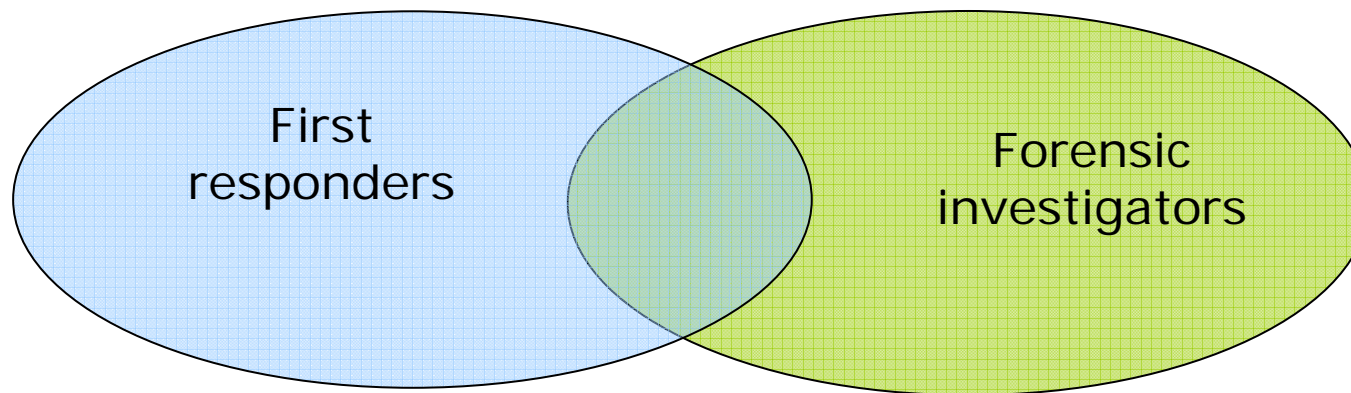
Law Enforcement

The results of the investigations should be accepted in Court of Law, therefore:

- Integrity of the evidence material should be documented from crime scene to court
- Responding and investigating staff should be educated, trained and proven competent
- The used methods are internationally accepted, proven and validated
- Reference materials and data should be available



Bringing response together

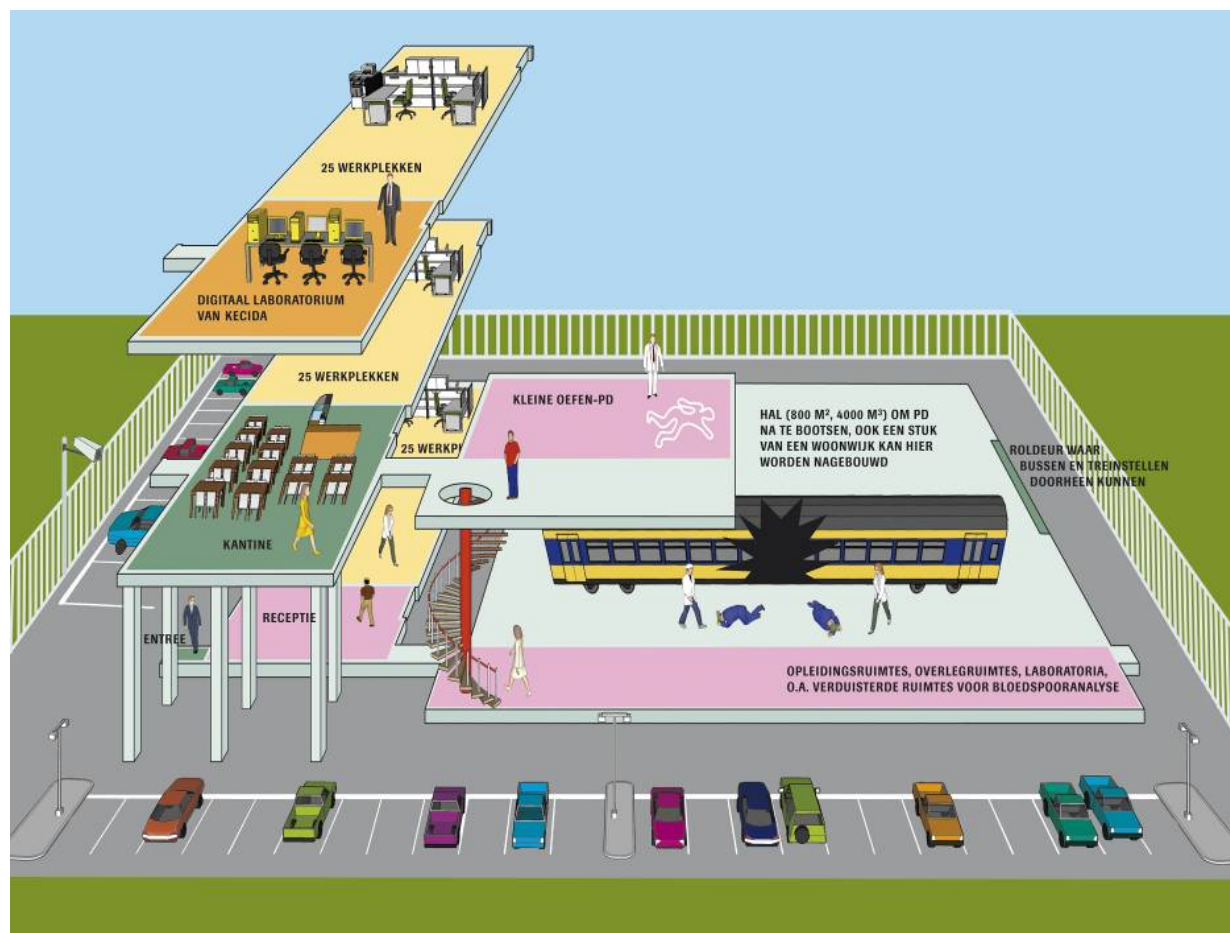


- understanding of each others work
- developing protocols



NFI – Academy and Field Lab







Facilities

- Classroom
- Mock court
- Forensic visualization, 3D-space
- Serious gaming
- Reconstruction space for simulation realistic incident scenes
(train, metro, buildings, industrial plants etc)



Opleiding en training





Opleiding en training

CBRNe training programme

- Training forensic awareness
- Hazmat training
- Multi disciplinary response exercises
- Base class CBRN forensics
- Base class acting safe and with risk awareness





Proposals for the OPCW

- forensic awareness training for first responders
- curriculum for forensic education and training
 - inspectors
 - both decision and policy makers
- handbook basic forensics for CBRNe incidents
- developing sampling methods for traditional forensics



C-agents



B-agents



RN-agents



explosives

Thank you for your attention

for information please contact

e.van.zalen@nfi.minjus.nl

Netherlands Forensic Institute



Large Scale Incident Response

Enschede (NL)



Large Scale Incident Response 11-12 April 2011

Amsterdam