

# **DORMAN®**

## **NEW SINCE 1918**

Engine Cylinder Deactivation Solenoid

Diesel Emissions Fluid  
(DEF) Heaters

Hybrid Inverter  
Assemblies

Turbocharger  
Cartridges

Brake Lights - High Mounts

Engine Variable Timing Sprockets

**Formerly "Dealer Only" Parts,  
Now Available in the Aftermarket**



**DORMAN ENGINEERED SOLUTIONS DESIGNED TO  
CORRECT KNOWN OE FAILURE MODES**

**LOOK INSIDE FOR PARTS ENGINEERED  
TO SAVE YOU TIME AND MONEY**

**TO LEARN MORE, VISIT: [WWW.DORMANPRODUCTS.COM/OEFIX](http://WWW.DORMANPRODUCTS.COM/OEFIX)**

## Suspension Air Compressors

*Inflates and regulates active air suspension shock absorbers*

**Over 10 SKUs Available • Additional Coverage Coming Soon!**

- **100% NEW, not remanufactured**
- Includes additional components that are often not available separately, such as mounting bracket, motor, dryer, heat shield and air tubing (where applicable)
- Direct-fit plug for an easier and more secure connection

### Failure Mode:

- Environment contamination, water intrusion and motor burnout
- Failure results in sagging suspension and dash trouble codes displayed



**949-001**

Cadillac 2013-07, Chevrolet 2013-07, GMC 2013-07



### AVOID USING WORN OR RUSTED ORIGINAL BRACKETS

Dorman unit is fully assembled with brackets, and ready-to-install — no additional bench time needed!

## NEW SUSPENSION COMPRESSOR COVERAGE:



Includes full bracket with sound/heat shield (not available separately from the Dealer)

**949-009**

Buick Lucerne 2011-06,  
Cadillac DTS 2011-06



Includes vent tube to replace failure-prone original unit (not available separately from the Dealer)

**949-200**

Ford 2011-03, Lincoln 2011-03,  
Mercury 2011-03



Coverage for popular Ford applications with high original unit failure rates

**949-202**

Ford Expedition 2013-07,  
Lincoln Navigator 2013-07



## Convertible Tops

**NEW!**

**5 SKUs Available**

- Restore convertible function and appearance to 'like new' with Dorman's direct-replacement convertible tops
- High quality materials match OE form, fit and function
- Features DOT compliant rear window

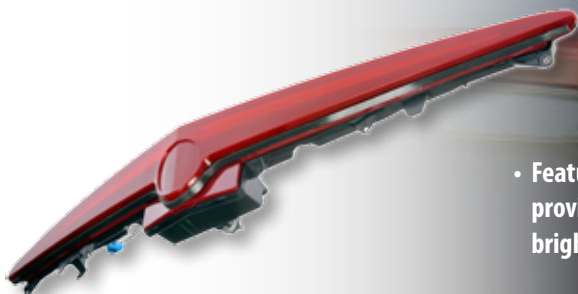
**926-500**

Mazda Miata 2005-99, Mazda Miata 1997-90

## Brake Lights - High Mount

*Direct replacement for a damaged brake light*

**Over 60 SKUs Available**



**923-239**

Cadillac CTS 2007-03

- Features integrated LED bulbs to provide up to 10 times more brightness than standard bulbs

**Failure Mode:**

- Original lamp burns out over time
- Collision

### OE PROBLEM:

Original units are frequently replaced due to failed ballasts



Completely redesigned lamp features LEDs which eliminate the ballast failures commonly associated with original unit



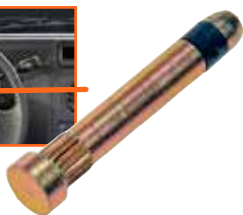
## Air Bag Clock Springs

*Relays power to steering wheel functions and air bag*

**Over 60 SKUs Available**

**525-027**

Buick 2004, Chevrolet 2004-02, GMC 2004-02, Oldsmobile 2004-02



## Auto Trans Shift Tube Lever Pin

*Retains shifter lever to steering column*

**924-440**

Ford 2015-90, Lincoln 2004-90, Mercury 2007-90



## Cables - Door Latch

*Connects door handle to door latch mechanism*

**20 SKUs Available**

**924-481**

Chevrolet 2014-10, GMC 2014-10

## Center Console Hinge Repair Kit

*Repair kit for a broken or damaged center dash console*



- New money saving solution for center dash console hinge repairs

### Failure Mode:

- Components on door break
- Failure results in center console door not functioning properly



**924-450**

Toyota Corolla 2008-02

### OE PROBLEM:

Once the original console hinge fails, the Dealer's only repair is a complete replacement of the entire console assembly



Dorman's repair kit allows for the replacement of just the failed original hinge, saving time and money



### SEVERAL COLORS AVAILABLE:

Black

Gray

Beige / Tan

## Console Lid Kits

*Replacement lid for center consoles*

### Over 15 SKUs Available

- **Complete Kit** - Includes all hardware for a complete repair (where applicable)
- **Reduce Repair Cost** - Replace just the broken lid, instead of replacing the entire console
- Available in a variety of colors to match the interior design of vehicle

**924-376**

Toyota Prius 2006-04



## Center Console Latches

### Over 5 SKUs Available

**924-822**

Volkswagen Beetle 2010-98,  
Volkswagen Jetta 2005-99,  
Volkswagen Passat 2001-99

## Door Lock Actuator Motors

*Electric motor located inside the door housing used to lock and unlock vehicle*

**Over 265 SKUs Available**



**931-081**

Chrysler 2008, Dodge 2010-08,  
Ram 2015-11

- Aftermarket leading application coverage for today's most in-demand vehicles
- Engineered with high quality electric motor

### Failure Mode:

- Motor wear and excessive mechanical stress leads to failure
- Failure results in lock becoming inoperable

## ALSO AVAILABLE:



**931-318**

Cadillac Escalade, Chevrolet Silverado, Avalanche, GMC Yukon, Sierra 2007-00



**931-333**

Chevrolet Impala 2011-06



**931-334**

Chevrolet Malibu 2012-08,  
Saturn Aura 2009-08

## RIGOROUS TESTING ENSURES HIGH QUALITY AND DURABILITY

- Crash Test Simulation
- Tensile Testing
- Salt Spray Testing
- Temperature Testing
- Cycle Testing

**BACKED BY DORMAN'S LIMITED LIFETIME WARRANTY**

FOR ADDITIONAL INFORMATION PLEASE VISIT US AT:

**[WWW.DORMANPRODUCTS.COM/IDLASOLUTIONS](http://WWW.DORMANPRODUCTS.COM/IDLASOLUTIONS)**





## Liftgate Glass Hinges

**3 SKUs Available**

**924-124**

Ford Escape 2007-01, Mercury Mariner 2007-05



## Liftgate Release Switches

**5 SKUs Available**

**901-471**

Jeep Grand Cherokee 2013-11



## Tailgate Latches

*Properly secures tailgate*

**Over 10 SKUs Available**

**38677**

Chevrolet 2015-07, GMC 2015-07,  
Hummer 2010-09



## Tailgate Lock Actuator Motors

**Over 15 SKUs Available**

**937-663**

Ford Escape 2012-09, Mercury Mariner 2011-09

## Trunk Lock Actuator Motors

*Controls the remote locking and unlocking of vehicle's trunk*

**Over 15 SKUs Available**

- Housing material protects motor from damage, ensuring a longer service life
- High quality electric motor

### Failure Mode:

- Original actuator arm breaks and requires replacement
- Failure results in the inability to open trunk



**931-860**

Toyota Camry 2011-07

## Truck Bed Floor Supports

*Supports the bed of the truck*

**2 SKUs Available**



**RUST**

**924-257**

Ford F-250 Super Duty, F-350 Super Duty 2011-99,  
Ford F-450 Super Duty 2011-08

- Direct replacements for popular Ford truck applications
- Includes bed hardware for a complete repair

**Failure Mode:**

- Rust corrodes original cross members making them unstable
- Failure results in loose truck bed

**ALSO AVAILABLE**

**924-256**

Ford F-250 Super Duty 2011-99,  
Ford F-350 Super Duty 2011-99

### OE PROBLEM:

Original bed supports corrode easily, and the Dealer does not offer as a separate replacement option



Dorman's repair saves money by replacing only the rusted original supports, not an entire truck bed assembly



### Truck Cab Mounts

*Mounts truck cab body to truck frame*

**3 SKUs Available**

**924-422**

Ford Ranger 1997-90



### Undercar Shields

*Mounts to undercar to protect drivetrain from road debris*

**Over 5 SKUs Available**

**924-048**

Chrysler 300 2010-07, Dodge Charger 2010-07,  
Dodge Magnum 2008-07



### Spare Tire Hoists

*Device used to retain, raise and lower spare tire*

**Over 15 SKUs Available**

**924-529**

Toyota Tundra 2006-00



## Power Sliding Door Cables

**2 SKUs Available**

**924-550**

Toyota Sienna 2010-04

### OE PROBLEM:

The OE Dealer does not offer cable separately. When the original snaps, entire motor and cable assembly must be replaced



Dorman saves money offering the replacement cable separately, avoiding the need for a complete assembly purchase.



## Sliding Door Roller Brackets

**3 SKUs Available**

**924-142**

Chevrolet 2013-96, GMC 2013-96



## Switch - Power Sunroof

**901-150**

Chevrolet Cobalt 2010-05, Pontiac G5 2009-07



## Sunroof Switch Bezel

**924-821**

Chevrolet Cobalt 2010-05, Pontiac G5 2010-07, Pontiac Pursuit 2006-05

## Horn Contacts

*Electrical contact that controls horn function*

**2 SKUs Available**

- To assist with installation, all necessary components are included for a complete horn contact repair (where applicable)
- An immediate "must-fix" item - replacement required to pass state inspection

### Failure Mode:

- Contact spring breaks
- Failure results in vehicle horn not functioning properly



**924-088**

Various GM 2009-02, Saab 2009-05





### Door Seals (Weather-Stripping)

*Provides a secure seal around vehicle door to prevent water and debris from entering vehicle interior*

#### Over 5 SKUs Available

- **Complete Kit** - Includes installation components for a complete repair (where applicable)

**924-443**

Jeep Wrangler 2006-97



### Power Seat Track Repair Kits

*Provides power from seat motor to the seat track, restoring the ability to properly adjust seat*

#### 3 SKUs Available

**924-074**

Infiniti I30 2001-00, Infiniti I35 2004-02,  
Nissan Maxima 2003-00

#### OE PROBLEM:

Failed original power seat gears require expensive replacement of the whole seat track assembly through the Dealer



Dorman's fix makes it possible to replace just the stripped original gear, instead of an entire assembly



### Windshield Washer Hoses

#### 4 SKUs Available

- Hose constructed of stronger grade material for increased durability
- Easy to install

**924-316**

Ford 2010-08

### ALSO AVAILABLE BODY/INTERIOR SOLUTIONS:



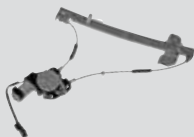
AIR BAG LAMP



IGNITION LOCK CYLINDERS



FORD EXPLORER  
REAR APPLIQUE PANELS



WINDOW REGULATORS

## Brake Hydraulic Lines – Stainless Steel Brake Lines

### 65 GM Truck SKUs Available

- Direct fit pre-bent stainless steel brake lines carry pressurized fluid from the master cylinder to the brake caliper or cylinder at the wheel
- Materials upgraded to stainless steel to resist corrosion
- Includes all lines and fittings for a complete brake line repair
- Dorman's stainless steel brake lines are preformed to specific application, saving time by eliminating bending, cutting and flaring


**RUST**
**919-102**

Chevrolet Silverado 1500 2002-99,  
GMC Sierra 1500 2002-99

#### Failure Mode:

- Rust, corrosion and deterioration from exposure to environmental debris
- Near 100% failure rate in rust belt region

FOR ALL STAINLESS STEEL BRAKE LINE DETAILS PLEASE VISIT US AT:

**[WWW.DORMANPRODUCTS.COM/STEEL-LINES](http://WWW.DORMANPRODUCTS.COM/STEEL-LINES)**



### ABS Tone Rings

Over 20 SKUs Available

**917-557**

Subaru Forester 2002-98, Subaru Impreza 2001-94,  
Subaru Legacy 1999-94



### Brake Proportioning Valves

5 SKUs Available

**905-962**

Buick 1999-91, Cadillac 2002-97, Cadillac 1993-91,  
Oldsmobile 1999-91, Pontiac 1999-91

## ALSO AVAILABLE BRAKE SOLUTIONS:



PARKING BRAKE ACTUATOR  
GEAR KITS



PARKING BRAKE BELL CRANKS



BRAKE MASTER CYLINDER CAPS



ABS SENSORS



### Control Arm Bumpers

*Attaches to the frame, preventing control arm from contacting vehicle frame*

#### Over 10 SKUs Available

- Improved design for a longer service life

**523-084**

Ford Excursion, E-Series, F-Series 2007-92



### Control Arm Bushings

*Connects the control arm to vehicle frame via bolt running through the bushing*

#### Over 15 SKUs Available

- **Reduce Repair Cost** - Replace just the worn bushing, instead of the entire control arm

**RUST**

**523-047**

Buick Enclave 2015-08, Chevrolet Traverse 2015-09, GMC Acadia 2015-07, Saturn Outlook 2010-07



### Shock Absorber Mount Bushings

*Mounting point between the control arm and shock*

#### Over 5 SKUs Available

- **Reduce Repair Cost** - Replace just the failed bushing, instead of the entire shock assembly

**523-078**

Dodge Dakota 2010-05, Mitsubishi Raider 2009-06, Ram Dakota 2011-10



### Trailing Arm Bushings

*Mounting point for the front and/or rear axle to vehicle frame*

#### 10 SKUs Available

- **Complete Kit** - Includes necessary components for a complete repair (where applicable)

**523-032**

Pontiac Vibe 2008-03, Toyota Corolla 2008-03, Toyota Matrix 2008-03



## Suspension Knuckle Bushings

*Mounting point between the knuckle and mating chassis parts*

**10 SKUs Available**

**905-538**

Chrysler Pacifica 2008-04

### OE PROBLEM:

Dealer does not offer a bushing only replacement, forcing customers to purchase entire Knuckle Assembly



Dorman offers replacements for the failure-prone original bushing, avoiding the need for an entire Knuckle Assembly purchase



## Suspension Shock Mounting Kit

*Shock mount isolator kit*

- **Complete Kit** - Includes all necessary components for a complete repair

**RUST**

**905-544**

Chrysler Cirrus 2000-99, Chrysler Sebring 2006-01, Dodge Stratus 2006-99, Plymouth Breeze 2000-99



## Suspension Stabilizer Bar Brackets

*Mounts sway bar to the chassis and absorbs vibration*

**Over 30 SKUs Available**

- **Complete Kit** - Includes mounting bolts for a complete repair

**RUST**

**928-331**

Scion tC 2010-05



## Suspension Track Bars

*Supports vehicle suspension*

**Over 5 SKUs Available**

- **Complete Kit** - Ball joints and bushings included for a complete installation, saving time and labor (where applicable)

**RUST**

**905-808**

Ford Mustang 2014-05

## Steering Shafts

*Restores steering to proper function*

**Over 40 SKUs Available**



**425-156**

Chevrolet Malibu 2012-04, Pontiac G6 2010-05,  
Saturn Aura 2009-07

- Exclusive Aftermarket Solution
- Direct replacement for a proper fit every time
- In-demand replacement parts due to high failure prone original parts

### Failure Mode:

- Clunking and/or binding in steering column
- Failure results in the inability to steer properly



## Axle Support Bushings

*Attaches differential to vehicle frame*

**4 SKUs Available**

**523-030**

Dodge Durango 2014-11,  
Jeep Grand Cherokee 2014-11



## Differential Dynamic Dampeners

*Absorbs torsional vibration*

**2 SKUs Available**

**924-441**

Honda CR-V 2006-02, Honda Element 2010-03



## Differential Mount

*Attaches differential to vehicle frame*

**905-539**

Honda CR-V 2011-02, Honda Element 2011-03





## Leaf Spring Bumpers

*Prevents damage to vehicle's suspension during heavy impact*

### 2 SKUs Available

- Replacement eliminates knocking noise from leaf spring
- Easy to install

**523-085**

Ford Excursion 2005-02



## Leaf Spring Hangers

*Attaches the leaf spring to the frame of the vehicle*

### Over 20 SKUs Available

- **Complete Kit** - Includes all necessary hardware for a complete repair (where applicable)

**RUST**

**722-216**

Dodge Dakota 2004-97



## Leaf Spring Shackles

*Bracket that mounts to the frame and holds the leaf spring in place*

### Over 20 SKUs Available

- **Complete Kit** - Includes all necessary hardware for a complete repair
- Shackle and hardware are powder-coated for long-lasting corrosion protection

**RUST**

**722-036**

Toyota Tundra 2006-00

## ALSO AVAILABLE CHASSIS/SUSPENSION SOLUTIONS:



JOUNCE BUMPER - REAR



SWAY BAR KITS



WHEEL HUBS



POWER STEERING PULLEYS

## Diesel Emissions Fluid (DEF) Heaters

*Restore proper drivability with Dorman's direct-replacement DEF Heaters*

**5 SKUs Available**



**904-372**

Ford F-250, F-350, F-450  
Super Duty 6.7L 2015-11

- **Complete Kit** - Includes all necessary components for a complete DEF heater repair
- **Quality tested** to ensure trouble free installation, performance and durability

### Failure Mode:

- **Original DEF heating element fails**
- **Failure results in drivability issues**



## Diesel Glow Plug Wiring Harness

*Supplies power to glow plugs*

- **Direct replacement**
- **No special tools required**

**904-249**

Ford 6.0L 2004-03



## Air Intake Heater Relay

*Restores intake heater to proper operation*

- **Designed from high-quality materials** for sustained reliability

**904-300**

Dodge 6.7L 2010-08, Ram 6.7L 2014-11

## Turbocharger Cartridges

*Replacement prevents oil and coolant from entering the vehicle's intake or exhaust*

### 7 SKUs Available

- Complete Kit - Includes O-rings for a complete repair
- Balance tested individually with results included in product packaging

#### Failure Mode:

- Original shaft seals wear out, or bearings fail from improper oil flow
- Failure results in low engine power and internal leaks



**667-001**

Ford 7.3L 2003-99



#### OE PROBLEM:

Original turbocharger assemblies wear over time, and the Dealer only offers complete assembly replacements



Dorman enables technicians to replace just the worn original turbo cartridge, without the expense of purchasing a new housing



## Turbocharger Oil Lines

*Feeds oil to turbocharger unit*

### 10 SKUs Available

**904-137**

Chevrolet 6.6L 2010-06, GMC 6.6L 2010-06



## Turbocharger Oil Return Tubes

*Carries oil away from turbocharger unit*

### 5 SKUs Available

**904-350**

Dodge 6.7L 2013-07, Ram 6.7L 2015-10



## Turbocharger Vane Position Sensor

*Monitors turbo vane position*

**904-235**

Chevrolet 6.6L 2015-06, GMC 6.6L 2015-06

**STRAIGHT TUBE DESIGN**

*Design allows for less clogging and better overall performance*

**EGR Coolers**

*Cools recirculating exhaust gas*

**Over 10 SKUs Available**

- **Complete Kit** - Includes all gaskets and O-rings for a complete repair
- Re-engineered with a spiral tube core to eliminate clogging

**904-311**

Dodge Ram 2500 6.7L 2009-07,  
Dodge Ram 3500 6.7L 2009-07

**Fuel Coolers**

*Cools and regulates diesel fuel temperatures*

**2 SKUs Available**

- Direct replacement

**RUST**

**904-180**

Chevrolet 6.6L 2011-01, GMC 6.6L 2011-01

**Fuel Injector Lines**

*Delivers pressurized fuel from the high pressure fuel rail to the fuel injector connector tube*

**Over 10 SKUs Available**

- Commonly replaced when servicing injectors or related parts
- **Complete Kit** - Includes inlet and return lines and mounting hardware for a complete repair

**904-325**

Dodge Ram 2500 5.9L 2009-03,  
Dodge Ram 3500 5.9L 2009-03

**ALSO AVAILABLE DIESEL SOLUTIONS:**

ENGINE OIL HOSES  
(HIGH PRESSURE PUMP)



OIL STAND PIPE



INJECTOR FEED LINES



WATER IN FUEL SENSOR



## Auto Trans Pressure Sensor Transducer

*Provides feedback to the vehicles PCM/TCM used in shifting*

- Plug and Play for easy installation

**601-016**

Dodge 2007-00, Jeep 2004-00



## Auto Transmission Shifter Repair Kit

*Helps shift vehicle into gear smoothly*

- **Complete Kit** - Includes necessary components for a complete repair

**924-783**

Lincoln Aviator 2005-03

### OE PROBLEM:

Original plastic shifter wears over time, and a trip to the Dealer results in an entire shifter assembly replacement



Dorman provides a solution to replace only the failed original shifter mechanism with a more durable metal version, saving time and money



## Transfer Case Control Modules

*Restores the ability to shift vehicle in and out of four-wheel drive (4WD)*

### Over 10 SKUs Available

- Reduce repair costs by eliminating programming time
- Fully remanufactured and vehicle simulator tested for durability and quality assurance
- Plug and play for easy installation - no programming required

**599-192**

Chevrolet 2014-07, GMC 2014-07





Highly recommended for use with  
Dorman's Differential Bearing Kits  
(697-108 & 697-116)

## Differential Ring & Pinions

*Transmits power from prop shaft to axle shafts*

### Over 95 SKUs Available

- Direct-fit replacement for original equipment designs
- Made from durable steel construction for long-lasting performance

### 697-309

Chrysler 2009-07, Chrysler 1981-70,  
Dodge 2010-66, Plymouth 1981-67



## Drive Shaft Couplers

*Connects prop shaft to transmission or rear differential*

### 30 SKUs Available

- **Complete Kit** - Includes bolts and washers for a complete repair (where applicable)
- Made from high-quality rubber for a longer service life
- Direct-fit replacement for original equipment designs

### 935-107

Porsche Cayenne 2010-08,  
Porsche Cayenne 2006-03,  
Volkswagen Touareg 2010-04



## Switches - 4 Wheel Drive

*Operates 4WD system*

### Over 10 SKUs Available

- Easy to install - Direct replacement plugs into mating component

### 901-154

Chevrolet 2000-96, GMC 2000-96

## ALSO AVAILABLE DRIVETRAIN SOLUTIONS:



SHIFT FORK KITS



SLIP YOKES



CENTER SUPPORT BEARINGS



DIFFERENTIAL COVERS

## Blind Spot Detection Module

*Detects objects and vehicles in close proximity to the vehicle*

- Plug-and-Play design requires no programming



### Failure Mode:

- Corrosion results in failure to detect vehicles and objects approaching drivers blind spot



### 601-035

Chrysler 2012-11, Dodge 2013-11,  
Jeep 2013-11, Ram 2012



## Body Control Modules

*Monitors and controls various electronic accessories*

### 7 SKUs Available

- Completely remanufactured and tested for durability and quality assurance
- 100% replacement of relays, resistors, capacitors and soldering joints (where applicable)

### 502-006

Buick 2007-04, Chevrolet 2009-02, GMC 2009-06,  
GMC 2004-02, Oldsmobile 2004-02



## Xenon Headlight Control Modules

*Restores headlights to proper operation*

### Over 10 SKUs Available

- Re-engineered and consolidated to fit a variety of popular part numbers
- Plug and play for easy installation

### 601-057

Lexus 2015-07, Toyota 2012-05

## Transmission Control Solenoids

*Receives signal from the vehicle's TCM to shift the transmission in and out of gear*

**4 SKUs Available**



### 609-040

Chrysler 2009-07, Dodge 2013-00,  
Jeep 2011-99, Mitsubishi 2009-06,  
Ram 2013-11

- Fully remanufactured and tested for durability and quality assurance
- Ready to Install - Plug and play design requires no programming

### Failure Mode:

- Original gaskets deteriorate, leading to transmission fluid contamination
- Failure results in erratic or hard shifting

## TRANSMISSION CONTROL SOLENOIDS ALSO AVAILABLE:



### 609-041

Dodge Durango 2005-04,  
Jeep Liberty 2005-03,  
Jeep Wrangler 2005-03



### 609-042

Dodge Durango 2003-00,  
Dodge Ram 1500 2003-02



### 609-043

Chrysler 2015-07,  
Dodge 2015-08,  
Ram 2015-14

## LIVE CUSTOMER SERVICE & TECH SUPPORT AVAILABLE!



Online  
[www.DormanProducts.com](http://www.DormanProducts.com)



Email  
[techlinemarketing@  
dormanproducts.com](mailto:techlinemarketing@dormanproducts.com)



Phone  
**1-866-933-2911**

**HOURS: MON-THU 8AM-7PM EST; FRI 8AM-5PM EST**



### Airbag Impact Sensors

*Sensor reliably signals the vehicle's onboard computer system during sudden, extreme deceleration*

#### Over 30 SKUs Available

- Plug and play design for an easy installation
- Helps restore airbag system to proper operation

**590-258**

Hyundai Elantra 2012-09,  
Hyundai Sonata 2014-08, Kia Optima 2015-11



### Electronic Load Detector

*Monitors the amount of current draw pulling from the vehicle battery*

- Replacement helps to protect against wear and tear on the vehicle's battery and alternator
- Plug and Play - Easily plugs into the fuse block

**601-019**

Acura RSX 2006, Honda Civic 2005-01,  
Honda CR-V 2006-02, Honda Element 2011-06,  
Honda Fit 2008-07



### Suspension Ride Height Sensors

*Direct replacement sensor restores vehicle suspension height*

#### Over 10 SKUs Available

- **Complete Kit** - Includes all hardware needed for a complete repair

**924-771**

Lexus LX570 2013-08

## ALSO AVAILABLE COMPLEX ELECTRONICS SOLUTIONS:



OE REPLACEMENT RADIOS



TOUCH SCREEN  
INFOTAINMENT DISPLAYS



HVAC CONTROL MODULES

**Air Intake Hoses****Over 60 SKUs Available****696-001**

Acura TL 2006-04, Honda Accord 2007-03

**Coolant Reservoirs****Over 185 SKUs Available****603-099**

Cadillac CTS 2006-03

**Drive Belt Idler Pulley Adjustment Bolt Kits****3 SKUs Available****917-122**

Nissan Murano 2007-03, Nissan Quest 2009-04

**Ignition Knock (Detonation) Sensor Connectors****5 SKUs Available****917-141**

Infiniti 2002-90, Nissan 2001-90

**Engine Cylinder Deactivation Solenoid***Manages the cylinder deactivation function for optimized fuel economy and engine efficiency***917-162**GM 2015-05, Isuzu 2006-05,  
Saab 2009-05

- Latest design used to ensure durability and long lasting performance
- Includes all necessary hardware for a complete repair

**Failure Mode:**

- Original solenoids stick or leak internally
- Failure results in poor performance and reduced fuel economy



## Engine Variable Timing Eccentric Shaft Sensor

*Detects angle of eccentric shaft*



**SPOT WELDS**

- Direct replacement for popular BMW applications

### Failure Mode:

- Oil leaks into electronics
- Failure results in vehicle misfire and illumination of the check engine light



**ULTRASONIC  
WELDS  
PERMANENT  
SEAL**

**917-030**

BMW 2013-06

### OE PROBLEM:

The original design utilizes spot welds, which commonly allow oil to seep into unit; leading to electronic failure



Dorman's design uses a stronger ultrasonic weld, preventing oil from contaminating internal electronics



## Distributor Seal Kit

**917-136**

Honda 2002-75



## Exhaust Manifold to Cylinder Head Repair Clamps

**2 SKUs Available**

**917-142**

Cadillac 2006-02, Chevrolet 2009-99,  
GMC 2009-99, Hummer 2007-03

### OE PROBLEM:

Manifold Studs commonly break, requiring a very time and labor intensive job of extracting broken studs.



Dorman's Manifold Clamp eliminates the need to extract broken studs by providing an external clamping solution.



## Intake Manifold Kits

### Over 45 SKUs Available

- **Complete Kit** - Includes all necessary components for a complete repair

**615-268**

Ford 2008-04, Lincoln 2008-05



## Engine Oil Pressure Filter

- Direct replacement for a proper fit every time

**917-143**

Buick 2009-05, Cadillac 2014-09, Cadillac 2007, Chevrolet 2015-05, GMC 2014-05, Pontiac 2009-05



## Oil Cooler Line Assemblies

### Over 200 SKUs Available

- Material upgraded from steel or rubber to corrosion-resistant aluminum (where applicable)

**625-340**

Cadillac 2006-05, Chevrolet 2007-05, GMC 2007-05, Hummer 2007-05



## Turbocharger Oil Return Tubes

### 7 SKUs Available

- **Complete Kit** - Includes all necessary components for a complete repair
- Constructed of durable materials for corrosion-resistance

**RUST**

**625-805**

Subaru Baja 2006-04



## Turbocharger Up Pipe Kits

### 3 SKUs Available

- **Complete Kit** - Includes gaskets and hardware for a complete repair (where applicable)

**679-014**

Ford E-350 Econoline 1998, Ford E-350 Econoline Club Wagon 1998, Ford Econoline Super Duty 1998

## VVT TECHNOLOGY SOLUTIONS PROGRAM

### Engine Variable Timing Solenoids

*Actuates variable valve timing by controlling oil flow and pressure*

**Over 70 SKUs Available**



- 100% tested - All Dorman variable valve timing solenoids have undergone vehicle testing and laboratory testing for quality assurance
- Plug and play - easily plugs into the electrical harness
- Includes all gaskets needed for a complete repair (where applicable)

#### Failure Mode:

- Oil sludge builds up on screens and/or electrical failure
- Rough idle, loss of power, illumination of the check engine light



**917-290**

Chrysler Sebring 2010,  
Dodge Avenger 2010, Dodge Journey 2010,  
Jeep Compass 2010, Jeep Patriot 2010



### Engine Variable Timing Sprockets

ALSO KNOWN AS: CAMSHAFT PHASERS

*Adjusts camshaft timing for optimal engine performance and efficiency*

**Over 15 SKUs Available**

**917-255**

Buick 2004, Chevrolet 2004-02, GMC 2004-02,  
Isuzu 2004-03, Oldsmobile 2004-02



### Engine Variable Timing Solenoid Gaskets

*Gasket used to seal the variable valve timing solenoid into the cam housing*

**4 SKUs Available**

**917-170**

Acura CL 1997, Honda Accord 1997-94

## ALSO AVAILABLE ENGINE SOLUTIONS:



EXHAUST MANIFOLD KITS



EGR TUBES



CRANKCASE VENT VALVE



TRANSFER CASE HOUSING

**EGR Tube Connectors****3 SKUs Available****917-416**

Ford 2014-98, Lincoln 2011-03, Mercury 2011-03

**EGR Valve Control Solenoids****4 SKUs Available****911-403**Volkswagen Beetle 2001-99,  
Volkswagen Jetta 1999-97,  
Volkswagen Passat 1997-96**Fuel Injector Wiring Harness****911-089**Chrysler Town & Country 2003-01,  
Chrysler Voyager 2003-01,  
Dodge Caravan 2003-01,  
Dodge Grand Caravan 2003-01**Evaporative Emissions System Leak Detection Pumps***Monitors the EVAP system for leaks***Over 15 SKUs Available**

- Upgraded internal magnet for increased performance (where applicable)

**RUST****310-203**Chrysler Sebring 2004-03,  
Dodge Stratus 2004-03,  
Jeep Grand Cherokee 2001**Failure Mode:**

- Corrosion to internal and electrical components
- Failure results in vacuum leaks and illumination of the check engine light

## Vacuum Pumps

*Provides vacuum source for brake booster*

### Over 10 SKUs Available

- Re-engineered radial ball bearing provides a greater load capacity for improved durability
- Includes mounting grommets (where applicable)
- Mechanical and electric vacuum pumps available

### Failure Mode:

- Original unit commonly fails due to internal bearing wear
- Failure results in loss of power brake assist



**904-814**

Ford F-150 2012-11



## Engine Crankcase Vent Valves

### Over 5 SKUs Available

**911-113**

BMW 323i 1999, BMW 328i 1999-96,  
BMW 528i 1998-97, BMW Z3 2000-97



## Intake Manifold Actuator

**911-904**

Chrysler 300 2010-07, Dodge Challenger 2010-09,  
Dodge Charger 2010-07, Dodge Magnum 2008-07



## Intake Manifold Control Valves

### Over 10 SKUs Available

**911-928**

Ford Taurus 2007-96, Mercury Sable 2005-96



## PCV Valve Diaphragms

### 2 SKUs Available

**911-115**

BMW 2014-12



## Vapor Canisters

*Stores excess fuel vapor from the gas tank until ready to be released into the combustion chamber*

**Over 30 SKUs Available**



**911-617**

Lexus ES300 1999, Toyota Camry 1999

- Redesigned with an extra hose to consolidate two OE numbers into one Dorman part (where applicable)
- Extensive durability, functionality and emissions tested

### Failure Mode:

- Physical damage, valve failure and over filling of fuel tank
- Failure results in illumination of the check engine light



## Secondary Air Injection Check Valves

**Over 5 SKUs Available**

**911-152**

Chevrolet Cobalt 2008-06, Pontiac G5 2008-06, Saturn Ion 2007-06



## Vapor Canister Purge Valves

**Over 50 SKUs Available**

**911-855**

Mercedes-Benz 2013-02



## Vapor Canister Vent Solenoids

**Over 40 SKUs Available**

**911-511**

Infiniti 2002-96, Nissan 2004-95

## ALSO AVAILABLE FUEL & EMISSIONS SOLUTIONS:



AIR FILTER BOXES



AIR PUMP MOUNTS



INTAKE MANIFOLD FLAP MOTOR



INTAKE MANIFOLD RUNNER CONTROL VALVES



## A/C Compressor Control Valve

*Regulates A/C pressure*

- **Reduce Repair Cost** - Replace just the failed valve, instead of the entire assembly
- Gasket included to assist with installation

**917-275**

Chevrolet Equinox 2005,  
Ford Five Hundred 2007-05,  
Ford Freestyle 2007-05,  
Mercury Montego 2007-05



## Air Door Actuators

*Electronic motor that controls the opening and closing of a variety of temperature control settings*

**Over 200 SKUs Available**

- Re-engineered with an upgraded motor and internal materials for improved durability and performance (where applicable)
- **Reduce Repair Cost** - Replace just the failed actuator, instead of the entire assembly

**604-918**

Ford Contour 2000-95, Ford Mystique 2000-95,  
Mercury Cougar 2002-99,  
Mercury Mystique 2000-95



## Coolant Thermostat Housings

*Transfers coolant*

**Over 100 SKUs Available**

- Designed to withstand extreme changes in temperature that frequently cause original housing to become brittle, crack and leak
- O-ring included to assist with installation

**902-812**

Mini Cooper 2013-07,  
Mini Cooper Countryman 2013-11,  
Mini Cooper Paceman 2015-13



### Engine Cooling Fan Module

*Controls the radiator cooling fan motors and A/C clutch by monitoring the coolant temp sensor, ambient temp sensor, pressure sensor and A/C switch*

- Plug and play for easy installation

**902-419**

Audi 2006-00,  
Volkswagen 2012-00



### HVAC Control Modules

*Controls a variety of cabin temperature options*

**Over 60 SKUs Available**

- Completely remanufactured and tested
- 100% backlight bulb and O-ring replacement (where applicable)
- Ready to install - Plug and play design requires no programming

**599-152**

Volkswagen 2006-97



### Power Steering Coolers

*Cools power steering fluid flowing through cooler*

**Over 10 SKUs Available**

Save shop time by eliminating the need for customizing a universal cooler to fit the vehicle

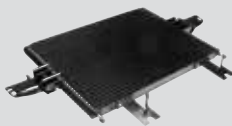
**918-318**

Jeep Commander 2010-06,  
Jeep Grand Cherokee 2012-05

## ALSO AVAILABLE HEATING & COOLING SOLUTIONS:



RESTRICTOR VALVES



TRANSMISSION OIL COOLERS



WATER OUTLETS

## Hybrid Drive Batteries

*A battery pack that assists the engine by providing power to maximize fuel economy*

Over 10 SKUs Available



- Ready to install Direct Replacements - no programming required
- Includes modules (such as ECU) - no need to reuse from old battery
- Completely remanufactured and tested
- Each unit and individual cell is thoroughly tested and balanced to confirm optimal battery pack performance

### Failure Mode:

- Over time battery cells lose their ability to hold a charge
- Hybrid malfunction indicator illuminates on dash and decreased fuel economy



**587-009**

Honda CR-Z 2012-11,  
Honda Insight 2014-10



**587-007**

Lexus CT200h 2013-11, Toyota Prius 2013-09,  
Toyota Prius V 2013-12



**THE LEADER IN REPLACEMENT HYBRID DRIVE BATTERIES**

### TOYOTA



**587-002**

Toyota Camry 2011-07

### HONDA



**587-004**

Honda Civic 2005-03

### FORD



**587-013**

Ford Escape 2009-05,  
Mercury Mariner 2009-06

FOR MORE HYBRID INFORMATION, VISIT [DORMANHYBRID.COM](http://DORMANHYBRID.COM)

## ALSO AVAILABLE HYBRID SOLUTIONS:



INVERTER ASSEMBLIES



ELECTRIC MOTOR TRANSMISSION  
STATOR



HYBRID SAFETY PLUGS



INVERTER COOLERS



*A full line of merchandised parts offering direct-replacements for a wide variety of in-demand fixes.*

**HUNDREDS OF HARD TO FIND SKUS AVAILABLE • [WWW.FINDDORMANHELP.COM](http://WWW.FINDDORMANHELP.COM)**



## Antenna Mast

**76840**

Honda 2014-02



## Audio / Video Jacks

**3 SKUs Available**

**57014**

Toyota 2013-07



## Auto / Manual Trans Shift Boots

**4 SKUs Available**

**76802**

Honda Civic 2011-08



## Auto Trans Shift Indicator Cable Brackets

*Retains shift indicator cable to shift mechanism*

**2 SKUs Available**

**70041**

Ford Crown Victoria 1995-92,  
Lincoln Town Car 1992,  
Mercury Grand Marquis 1995-92



## Bumper Cap

*Improves vehicle aesthetic by covering hitch opening*

**54410**

Cadillac 2014-07, Chevrolet 2014-07, GMC 2014-07



## Cup Holders

**Over 15 SKUs Available**

**41021**

Toyota Highlander 2007-01



## Dashboard Air Vent

*Easy replacement for original units that warp over time*

**57900**

Chevrolet 2005-98, GMC 2004-98, Oldsmobile 2001-98



## Door Interior Reflectors

*Safety feature to increase visibility in low lighting conditions*

**3 SKUs Available**

**74367**

Cadillac 2006-03, Chevrolet 2007-03, GMC 2007-03



## Seat Belt Buckle Button Stops

*Small device that prevents seat belt from retracting too far*

**3 SKUs Available**

**74358**

Lexus 2014-05, Scion 2014-12, Subaru 2014-93, Toyota 2014-02



## Sun Visor Clips

**5 SKUs Available**

**74437**

Honda Civic 2005-01, Honda CR-V 2001-97, Honda Fit 2008-07, Honda Insight 2003-00



**KEYLESS REMOTE SOLUTIONS****Keyless Entry Remotes***Quick and easy solution to lost or broken key fobs***Over 30 SKUs Available****99157**

Buick Lucerne 2011, Chevrolet Impala 2013-11

- Programming new remote to existing vehicle takes just minutes
- Direct Replacement - Fit, form and function
- Instructions included

**OE PROBLEM:**

OE unit requires a trip to the Dealer for programming



Dorman's units includes a programming tool\*, eliminating the time and cost of a trip to the Dealer

\*where applicable.**REPLACE JUST THE CASE!****Keyless Remote Cases***Does your Keyless Entry Remote still work, but the case is damaged?***Over 40 SKUs Available**

- **Reduce Repair Cost** - Replace the broken or cracked keyless remote case, instead of the entire key fob
- No special tools required

**13655**

Toyota 2013-04

**CUSTOMIZE TO FIT YOUR STYLE!**  
▶ AVAILABLE IN A VARIETY OF STYLES**13734**

Buick 2007-04, Chevrolet 2009-02, GMC 2009-02, Oldsmobile 2004-02

**13739**

Cadillac 2002, Chevrolet 2004-01, GMC 2004-01

**13745**

Buick 2005-01, Chevrolet 2005-01, Oldsmobile 2004-01, Pontiac 2005-01

**FOR ALL KEYLESS REMOTE & CASE SOLUTIONS PLEASE VISIT US AT:****[WWW.DORMANPRODUCTS.COM/KEYLESS](http://WWW.DORMANPRODUCTS.COM/KEYLESS)**

Product Training and Videos... **JUST A CLICK AWAY!**



**DORMAN**  
UNIVERSITY

**FREE TRAINING MODULES  
ARE AVAILABLE:**

• **Door Lock Actuators – NEW!**

- Fuel & Emissions
- Hybrid Batteries
- Steel Brake Lines
- VVT Technology
- Diesel Overview
- and Much More!



SCAN NOW



**Sign Up Today at [DormanUniversity.com](http://DormanUniversity.com)!**

VISIT **DORMAN** ON **YouTube**!



**INSTANT ACCESS TO A LIBRARY OF  
VIDEOS, INCLUDING:**

- Installation
- Product Spotlights
- Training
- and Much More!



SCAN NOW

**[YouTube.com/DormanProducts](http://YouTube.com/DormanProducts)**



**STAY CONNECTED WITH **DORMAN****



- Maintenance / Safety Tips
- Quizzes / Games
- Product Alerts
- Special Announcements

**DORMAN**  
NEW SINCE 1918

2015016

Dorman Products, Inc. | 3400 East Walnut Street | Colmar, PA 18915  
Corporate Office and Customer Service: 1-800-523-2492  
New Product Idea Hotline: 1-800-336-3575

©2015 No reproduction in whole or in part without prior written approval.



**[www.DormanProducts.com](http://www.DormanProducts.com)**