



## SICO® Room Service Table

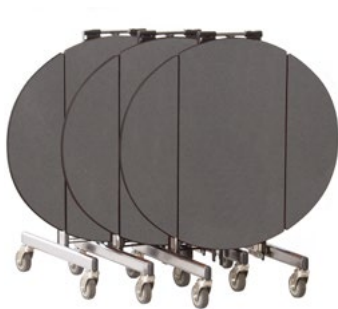
Enhance the Dining Experience.

**FOUR  
UNIQUE  
DESIGNS**



A Room Service Table Designed to Deliver a Premier Dining Experience.

A smartly designed and smooth-rolling room service table from SICO® offers user-friendly ease for staff and guests alike — from your first-floor kitchen to your top-floor suites. Choose from a variety of options to fit your specific needs. A SICO® Room Service table moves subtly, smoothly and quietly and optional unit-to-unit connectors also allow one person to pick up or deliver a train of multiple tables — saving time and labor.



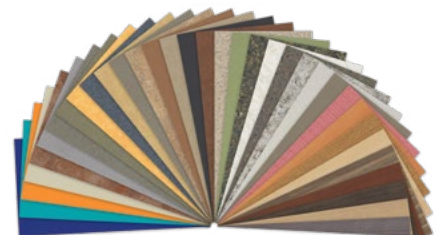
### Nest for Storage

Tables nest in a minimum of 7" (18cm) for each additional table.



### Convenient Storage Racks

Store and transport food warmers out of sight. Flips up for unobstructed seating



### Customizable

Almost 200 laminates, 12 Armor-Edge® colors, and 4 frame finishes.



# Features, Advantages & Benefits

## Table Top

**SICO® ARMOR-EDGE®:** The most durable edge available. Proven track record for long-term durability. Provides an incredibly tough edge to take hard everyday use without damage. Hermetically seals the tabletop for sanitary purposes and prevents moisture from entering table top core.

**High-pressure Laminate:** Tough .04" (.10cm) thickness high-pressure laminate for added durability and long-term wear. A large variety of striking colors and patterns are available to fit any cafeteria decor.

**Solid MDF Core:** Laminate tops are made with extremely durable ¾" (1.9cm) MDF core material that is stronger than plywood or particleboard and resists warping.

**Rigid Vinyl Backer Sheet:** Far superior to all types of paper backers. Applied to the underside of the tabletops for moisture control and easy cleanup (including gum removal), stain resistance and fantastic appearance.

**Square or Oval Shaped Table Option:** Comfortable seating for four won't crowd your guests. The oval shape makes it easier for guests to reach everything on the table.

**Tamper Proof Expansion Rivets:** Fasten tabletop firmly to the frame and will not work loose like ordinary screws.

## Table Leaves

**Convenient Folding:** Table leaves can be folded down for transport and folded out for serving. Tri-Fold table leaves can lock in the upright position for returning to the kitchen, greatly reducing breakage or spillage.

**7 Gauge Vertical Hinges:** Extra heavy hinges won't trap food while providing strength, security and durability.

**Retractable Bar:** Holds table leaves in place when table is in fully flat position.

## Transport & Storage

**Swivel Casters:** Tables roll quietly on 4" diameter gray resort wheels, designed to easily roll over rough terrain. Constructed for durability and easy cleaning. One person can easily roll and maneuver tables smoothly into service or storage. No need for table caddies. Non-marring casters protect the floor. Larger resort casters available.

**Folds for Storage:** Tops fold vertically for tight storage. This allows tables to nest with only 7" (18cm) more space for each additional table in storage.

## Table Frame Support

**Oval Tube Frame:** Aesthetically pleasing design manufactured using 16-gauge steel provides strength and durability.

**Center Leg Design:** Gives your guests extra leg room.

**Finishes:** Nickel chrome plated or black powder-coat Finished Frame/Legs for durability, appearance, and ease of cleaning. Other elegant powder-coat finishes available.

**Vinyl Coated Storage Rack:** Storage racks flip up to allow unobstructed seating. Provides extra storage for room service equipment like food warmer storage units during transport.

**Aircraft Lock-nuts:** Tamper-resistant lock-nuts are used at all pivot points and won't loosen over time.

### Unit-To-Unit Connectors *(Optional):*

Allows for one in-room dining attendant to deliver and pick up a train of multiple tables. Saving time and labor.



## Warranty

Protected by a 3-Year warranty against manufacturer's defects. Lifetime warranty on welds.



# Specifications

Description	Model No.	Weight
Tri-Fold Oval	TRT82FSC??02BG	65 lbs. (29kg)
Tri-Fold Square	TRT82FSE??02BG	65 lbs. (29kg)
Bi-Fold Oval	TRB82FSC??02BG	63 lbs. (28kg)
Bi-Fold Square	TRB82FSE??02BG	63 lbs. (28kg)

## Optional Table Guide:

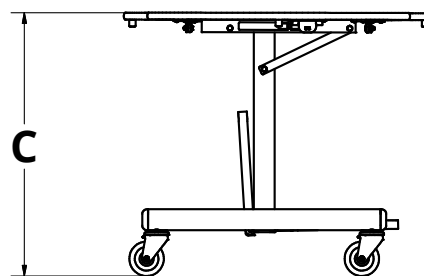
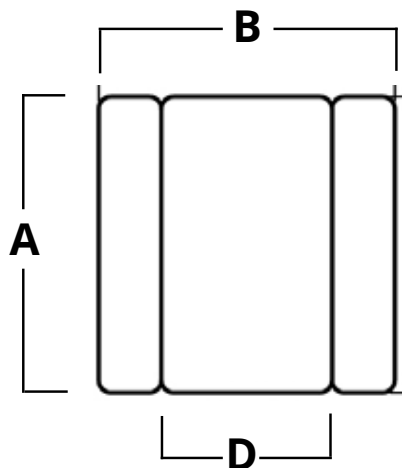
Add a character (T) to the end of the Model No.

? - Customization Option



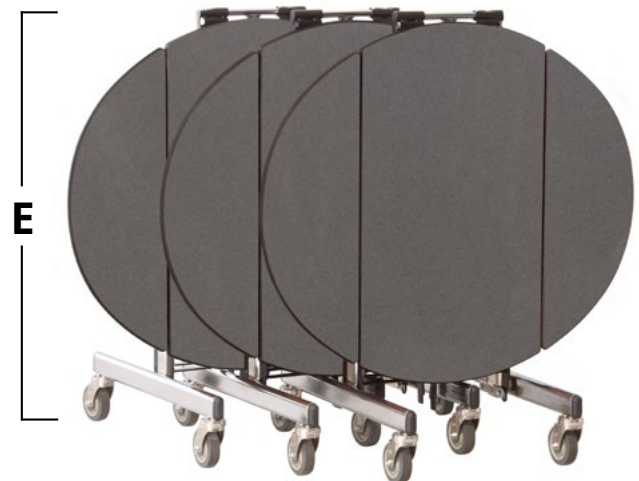
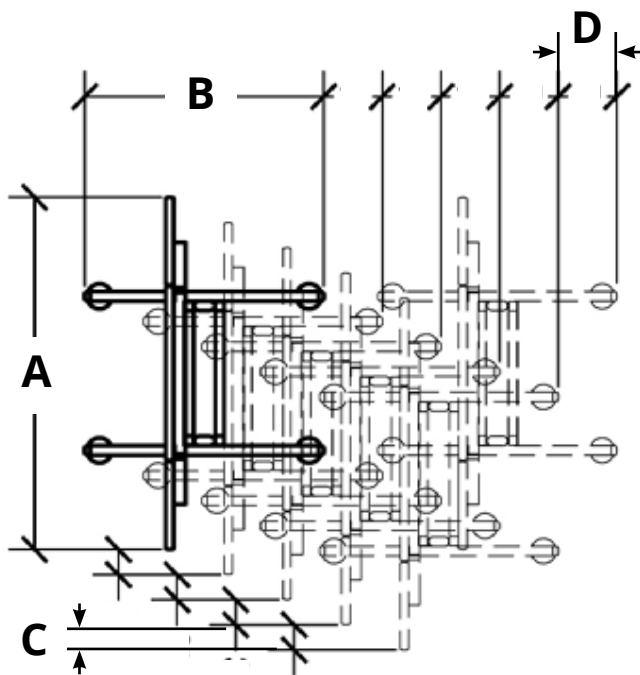
# In Use Dimensions

Table Name	<b>A</b> Top Length	<b>B</b> Top Width	<b>C</b> Top Height	<b>D</b> Top Width (Leaves Folded)
Tri-Fold Oval	36" (92cm)	42" (107cm)	30" (76cm)	Up: 28" (71cm) / Down: 23" (59cm)
Tri-Fold Square	36" (92cm)	36" (92cm)	30" (76cm)	Up: 28" (71cm) / Down: 23" (59cm)
Bi-Fold Oval	36" (92cm)	42" (107cm)	30" (76cm)	Down: 23" (59cm)
Bi-Fold Square	36" (92cm)	36" (92cm)	30" (76cm)	Down: 23" (59cm)

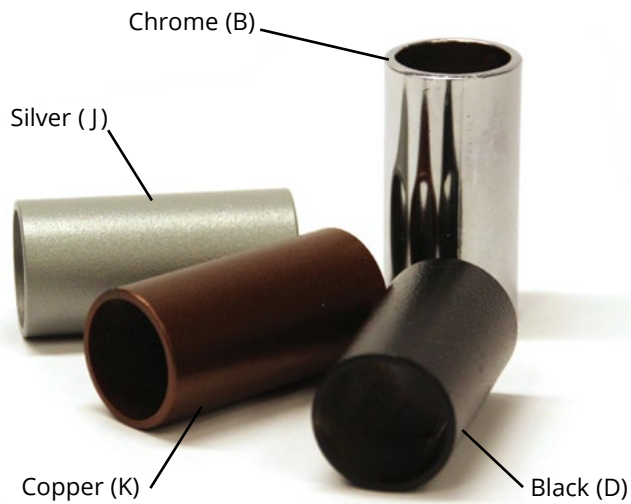


# Storage Dimensions

Table Name	<b>A</b> Footprint Length (Single Unit)	<b>B</b> Footprint Width (Single Unit)	<b>C</b> Add'l Footprint Length (per table)	<b>D</b> Add'l Footprint Width (per table)	<b>E</b> Height (Folded)
Tri-Fold Oval	42" (107cm)	28.5" (72cm)	3" (8cm)	7" (18cm)	44" (112cm)
Tri-Fold Square	36" (92cm)	28.5" (72cm)	3" (8cm)	7" (18cm)	44" (112cm)
Bi-Fold Oval	42" (107cm)	28.5" (72cm)	3" (8cm)	7" (18cm)	44" (112cm)
Bi-Fold Square	36" (92cm)	28.5" (72cm)	3" (8cm)	7" (18cm)	44" (112cm)



## Table Leg/Frame Options

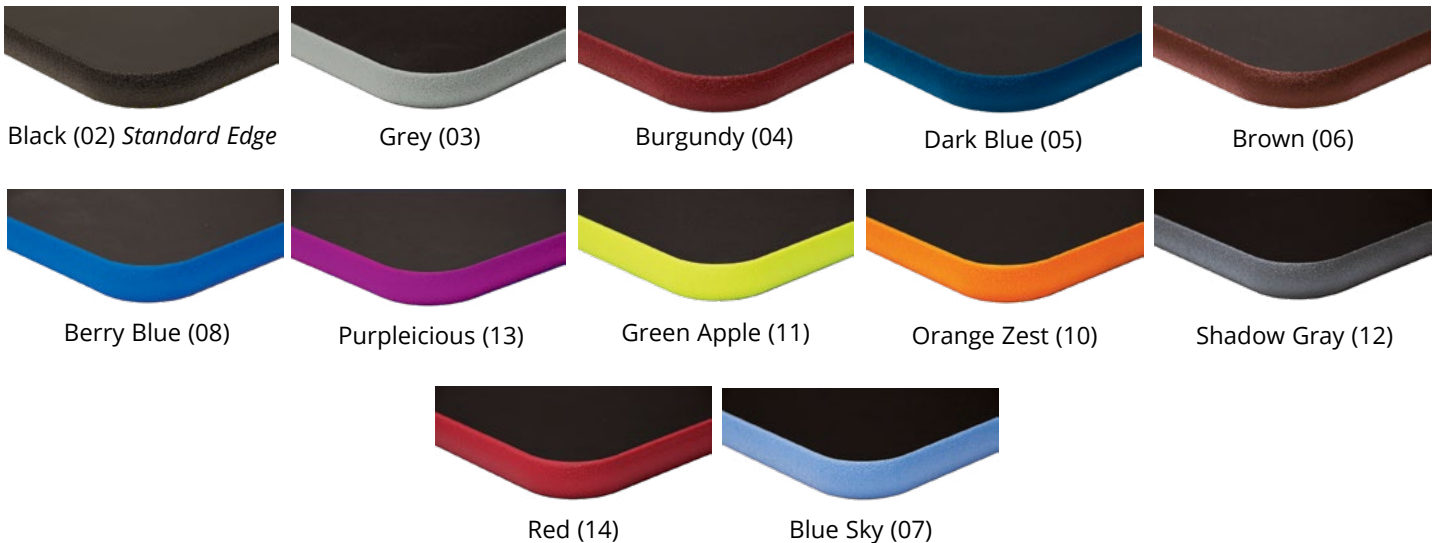


## Laminate Options



Visit [www.sicoinc.com](http://www.sicoinc.com) to see our collection of almost 200 standard table laminates.

## Table-Top Armor-Edge® Options



*WANT TO FIND OUT MORE?*

Visit [www.sicoinc.com](http://www.sicoinc.com) to see more from our wide variety of innovative products that can launch your space to the next level.



7525 Cahill Road, Minneapolis MN 55439

| 1.800.328.6138

| [www.sicoinc.com](http://www.sicoinc.com)

| ©2020 SICO® Inc.  
RST IS - R4 - 12/20