

Stitching Sewcial

HOME ABOUT US ▾ ARTICLES NEWS PROJECTS ▾ TIPS & TRICKS

Free Design: Baby Bear Bib

February 22, 2021 | By Joanne Banko | Apparel, Free Design of the Month | No Comments

Opinion by Paid Consultant



~Joanne Banko, Brother Sews Ambassador

This month we're featuring a few projects for the precious little ones in your life, starting with a cute embroidered baby bib. The Brother Free Design for this Month is an adorable bear design. It's sized just right for most baby bibs. Read through this tutorial and you'll learn about font editing features found in many Brother sewing machine models. You'll also find tips for improving your embroidery skills throughout the instructions. While your Brother embroidery machine may not look exactly like the images shown here, I suggest you compare names of the keys on the screen to those found in your own machine to

Type and press enter

Tags

#StitchingSewcial

4x4 hoop

Angela Wolf

Applique

Bobbin

Bobbin Thread

brother at your side

Brother Blog

Brother Embroidery

Brother Embroidery Machine

Brother Quilts

Brother Sewing Machine

Brother Sews

design Disney

DIY

Embroidery

embroidery thread

learn more about these features and put them into practice. Exploring embroidery font features makes this project perfect for sewing beginners and beyond. Are you ready? Let's go sew!

Materials and Supplies:

- **Brother** sewing and embroidery machine. *Note:* Machine featured in this project is the **Brother NS 1750D**. You can use any machine with 4-inch hoop capability.
- **Brother** Embroidery Threads and Bobbin Thread for embroidering.
- **SA5929** Brother Cut-Away stabilizer cut to fit hoop size.
- Temporary adhesive spray specifically for machine embroidery.
- Plain low nap baby bib, sized large enough for featured design.
- **Brother Free Design for March**. See **Figure #1a** for original thread color and stitch information. See **Figure #1b** for modified colors.



Emily Thompson

Fabric

Foot of the Month

Free Design

Free Design of the month

Gift Holiday

Hoop

iBroidery

Joanne Banko

Laura Pifer

Quick Tip

Quilting

Ribbon Serger

Sew-a-long

Sewing

Software

Stabilizer

stitching

Stitching Sewcial

The Dream Fabric Frame

THE Dream Machine

THE Dream Machine® Innov-ís XV8500D

Thread Video

XV8550D



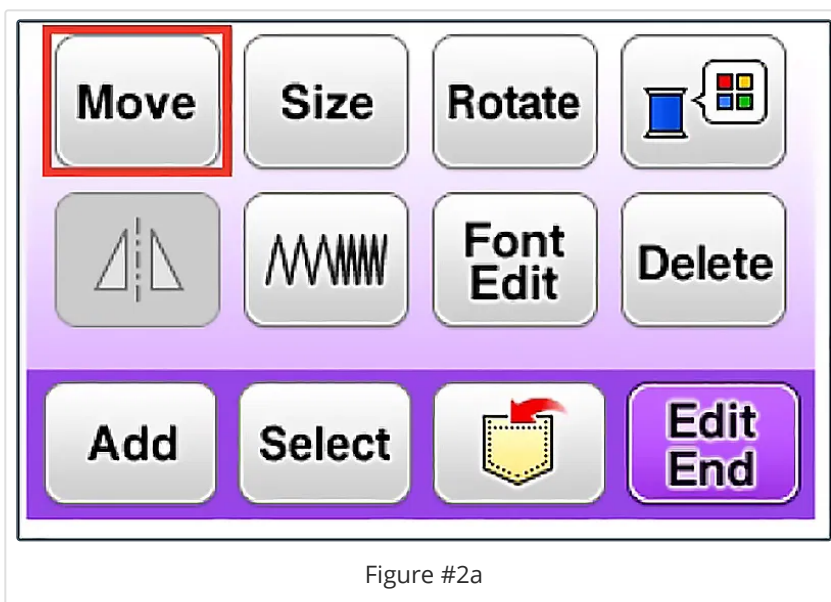
Basic steps for creating embroidered baby bib:

- Prepare bib for embroidery and hoop with stabilizer.
- Create design using edit mode of sewing machine for changing size and configuration of lettering.
- Embroider design and remove stabilizer.

1. Transfer design to machine. Create a combination design with bear and lettering as follows:

Select design, touch Set and then touch the Move key. Use arrow keys to move design to bottom of hoop and touch OK.

See Figure #2a and Figure #2b.



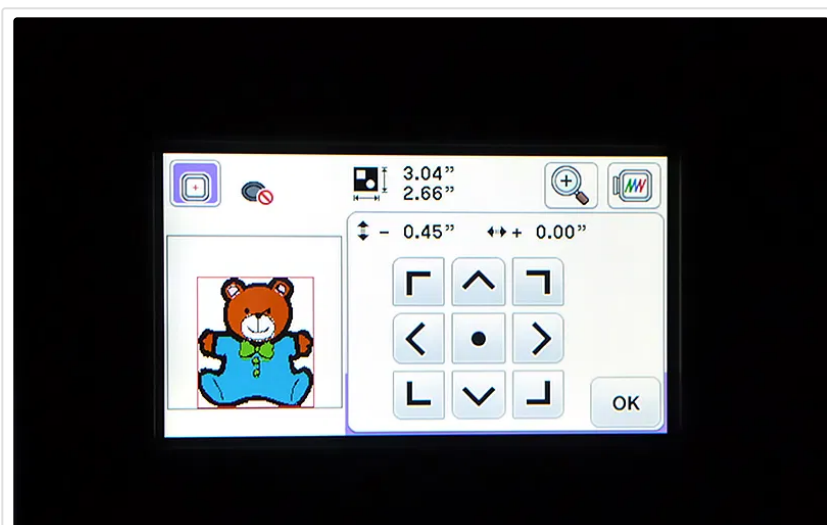


Figure #2b

Touch Add and select a block style font from the font menu. **See Figure #3a and Figure #3b.** *Tip:* Block style fonts work better than fonts with thin columns on this low nap fabric.

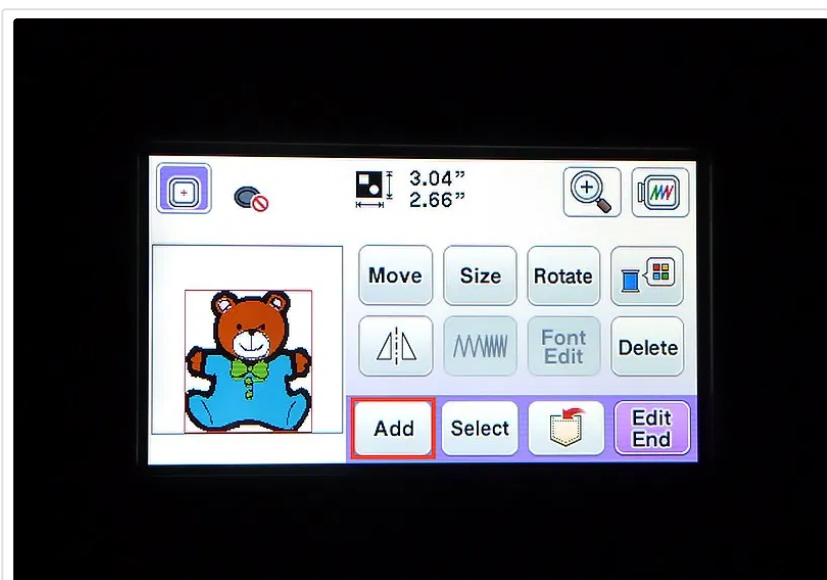


Figure #3a

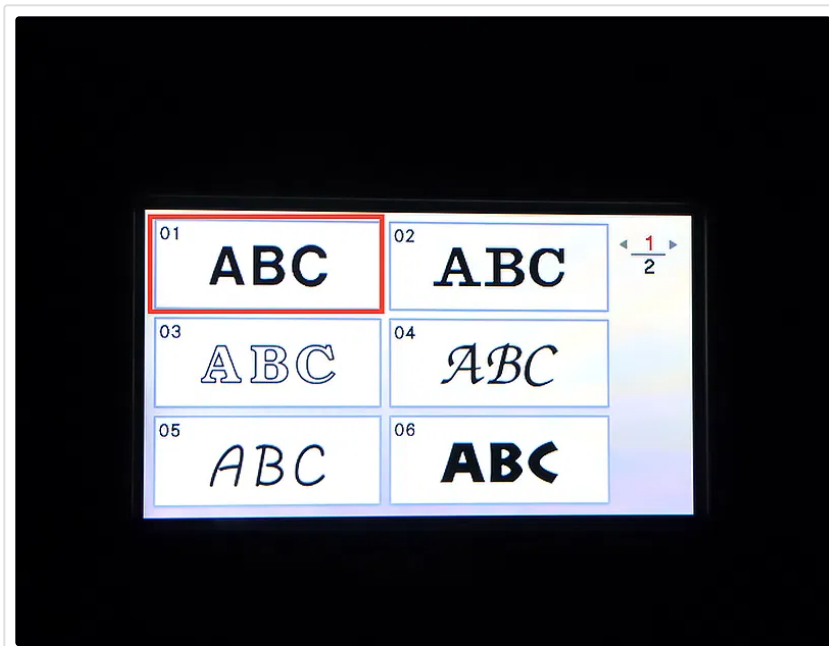


Figure #3b

Program lettering using small font size, using arrows on machine to navigate through the lettering screens to select both upper and lower case letters. Add a space between the two words, and an exclamation point at the end. *Tip:* Be sure to select S for small, right after selecting the first letter. **See Figure #4a, Figure #4b, Figure #4c, and Figure #4d.**

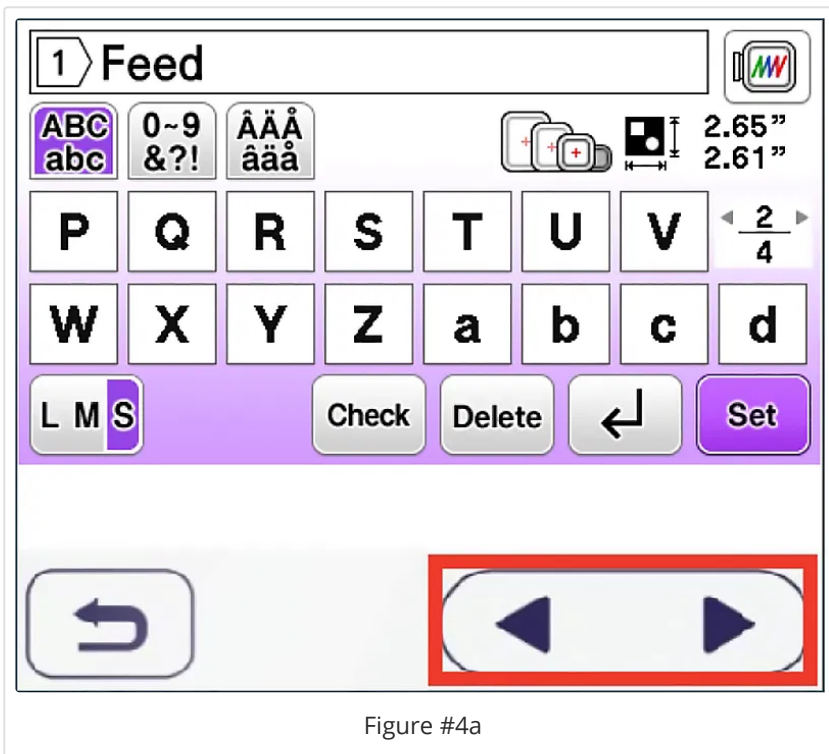


Figure #4a



Figure #4b

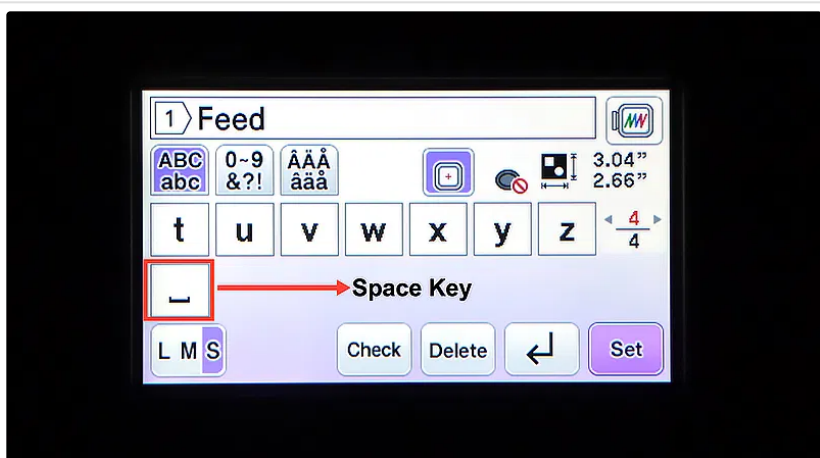


Figure #4c



Figure #4d

Tip: I like to start with smaller, rather than larger lettering and then use the sizing feature to increase the lettering size to fit the hoop area. This is especially helpful when using the Array feature, as larger lettering will sometimes prevent you from using various array functions. Here is my formula: Start small, add the array, and then change sizing last.

Set your lettering, touch move key, and use arrow keys to move lettering above the bear head. Touch OK. **See Figure #5.**

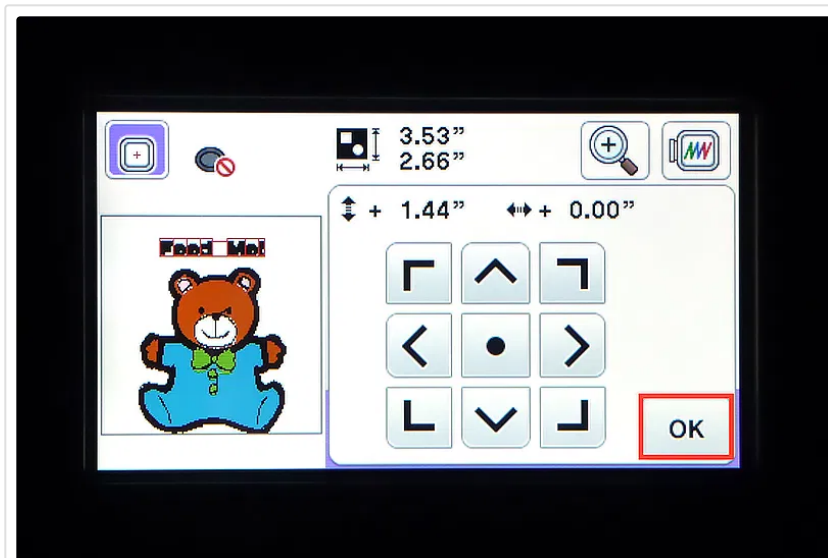


Figure #5

Touch font edit key. Touch array key. Curve lettering over bear head. Touch OK, then OK again to return to embroider edit screen. **See Figure #6a, Figure #6b, and Figure #6c.**

Tip: There are many more options for editing embroidery fonts. Watch for more in future tutorials!

Touch size key and increase lettering until the machine stops at the maximum size. Touch OK. **See Figure #7.**

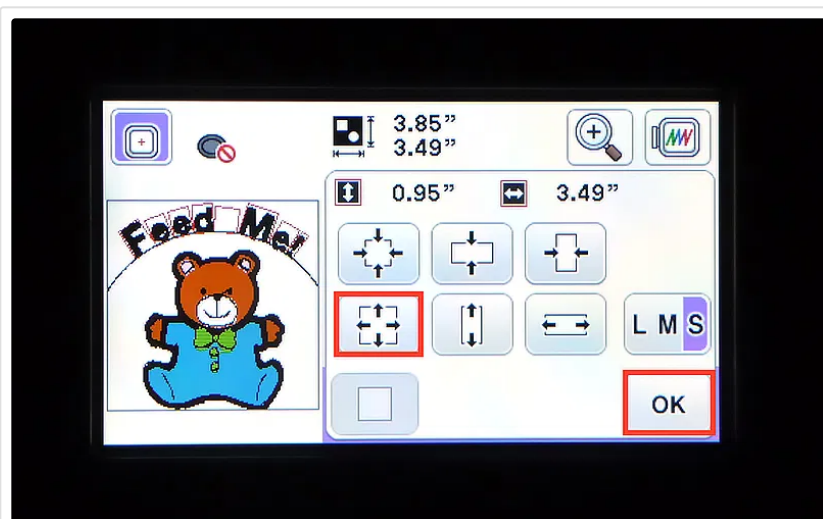


Figure #7

2. End editing. Center combination on the screen, then touch Embroidery. **See Figure #8a and Figure #8b.**

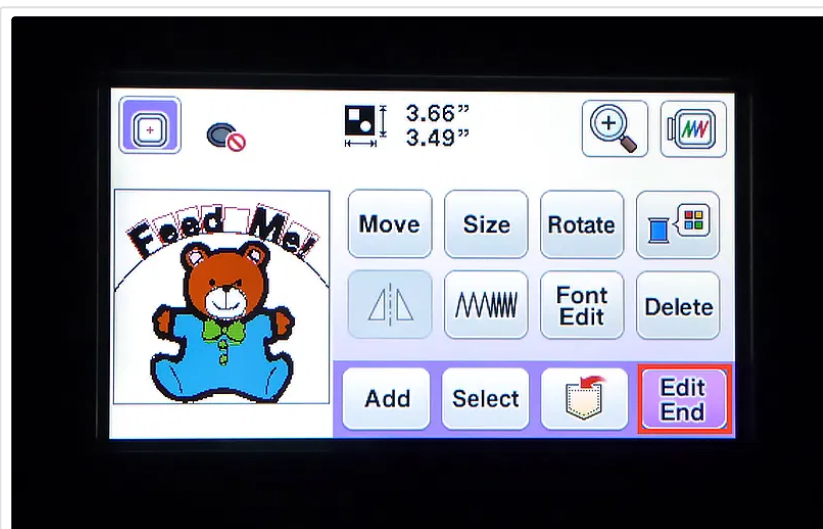


Figure #8a

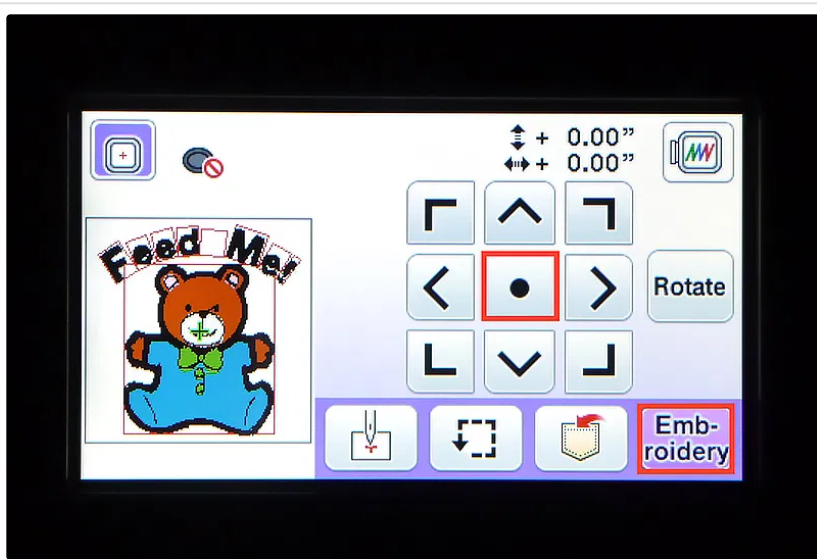


Figure #8b

3. Hoop cut-away stabilizer and lightly spray with adhesive, following manufacturer's directions on the can. *Note:* It is very important to avoid over spraying. *Tip:* To keep adhesive from getting on the hoop, I like to cut a window in a piece of scrap paper and tape it over the hoop to protect the edges. Spray over paper, then remove and discard. **See Figure #9.**

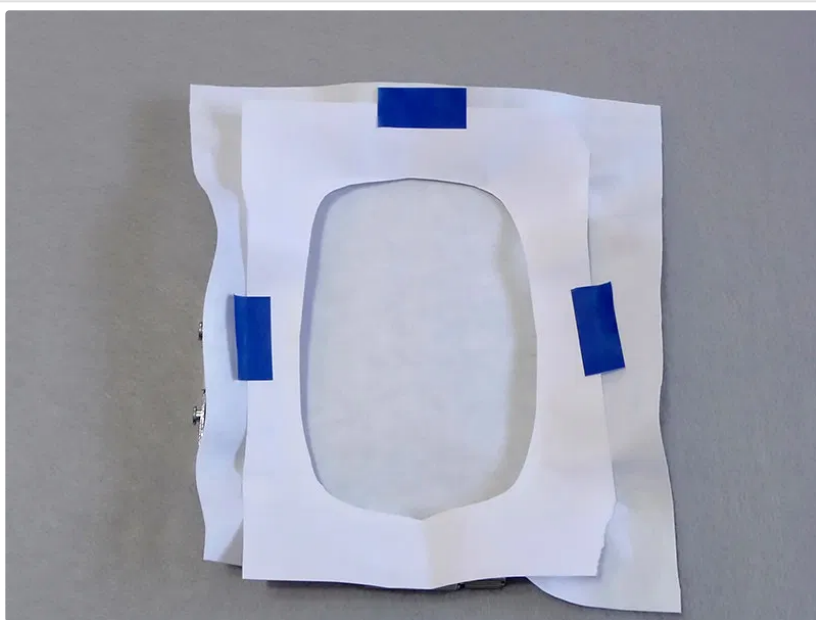


Figure #9

4. Center bib in hoop, securing it to the tacky surface. Place water-soluble over the bib to help tame the nap and keep the

design from sinking in. *Tip:* Lightly dampen the outer edges of the stabilizer to make it tacky and it will adhere to your fabric. Embroidery design on bib. **See Figure #10.**



Figure #10

5. Remove from hoop and trim stabilizer, leaving a margin of $\frac{1}{2}$ to 1-inch of stabilizer around the design. *Tip:* Bonding from temporary spray adhesive will usually disappear within 2 to 5 days. To dissipate earlier than that, iron the sprayed fabric with a warm dry iron. This type of adhesive does not wash out. You'll want to make sure spray adhesive is gone before thoroughly washing out water-soluble as recommended on the package.

You are finished with embroidering your baby bib! Enjoy!

Options and ideas:

- Feel free to sew your own multi-layer bib. Embroider on the top piece then add a lining to hide stitches on the wrong side.