



FINE & DECORATIVE ARTS  
Friday 14th & Saturday 15th May 2021



KINGHAMS

AUCTIONEERS • VALUERS







# KINGHAMS

AUCTIONEERS • VALUERS

## FINE AND DECORATIVE ARTS

To be held at:  
10-12 Cotswold Business Village, London Road, Moreton-in-Marsh GL56 0JQ

FRIDAY 14TH MAY  
SATURDAY 15TH MAY

### Day of the Sale

Auction scheduled to start at 10am with live bidding on internet bidding platforms; telephone bids and commission bids will also be accepted. You will need to be registered before the sale.

FACE MASKS ARE MANDATORY FOR VIEWING AND ROOM BIDDERS

## SPECIALISTS



George Kingham  
Director



John Keightley  
Associate Director  
Senior Valuer and Cataloguer



Allison White  
Auctioneer, Valuer  
and Photographer



Adrian Rathbone  
Associate Director



Mark Oliver  
Consultant Decorative  
Arts Specialist



Geoff Shepherd  
Associate Director  
Office Manager



Steven Bruce  
Consultant Value



David Pregon  
Jewellery and Watches



invaluable



Live internet bidding is available on [www.the-saleroom.com](http://www.the-saleroom.com), [www.invaluable.com](http://www.invaluable.com), [www.easyliveauction.com](http://www.easyliveauction.com), [www.liveauctioneers.com](http://www.liveauctioneers.com) and [www.drouot.com](http://www.drouot.com) together with fully illustrated catalogue.

Catalogue £10.00 (£12.00 by post)

### Kingham's Auctioneers Ltd

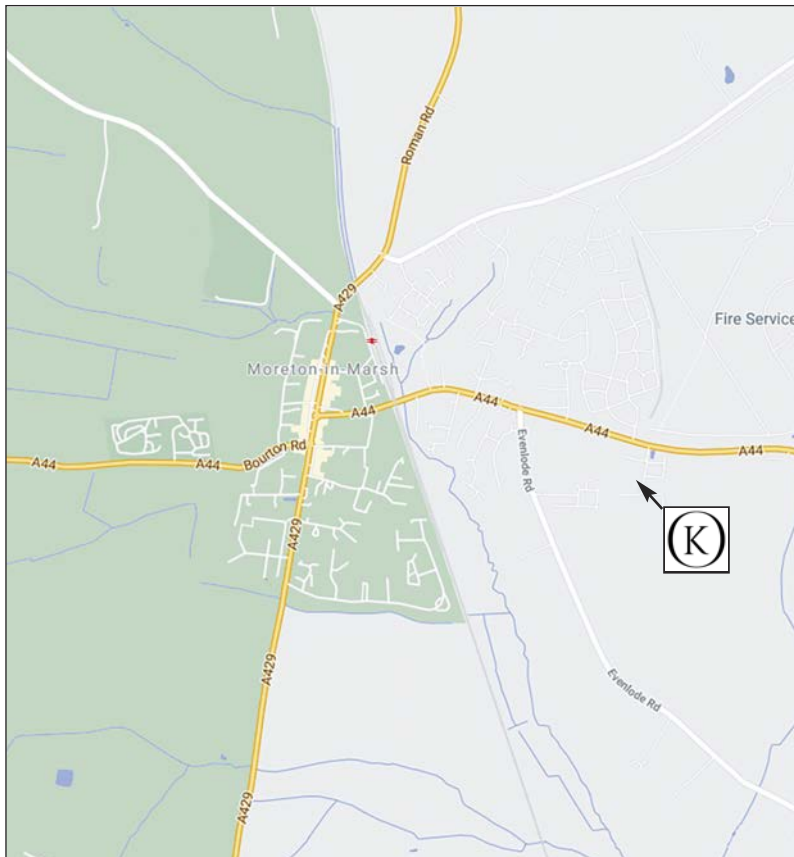
10-12 Cotswold Business Village, London Road, Moreton-in-Marsh GL56 0JQ  
NB. Please telephone to arrange collection.

Telephone: 01608 695695 Mobile: 07976 919836

Email: [enquiries@kinghamsauctioneers.com](mailto:enquiries@kinghamsauctioneers.com) Website: [www.kinghamsauctioneers.com](http://www.kinghamsauctioneers.com)



## MAP AND DIRECTIONS



Our auction site is based in the market town of Moreton-in-Marsh on the edge of the Cotswolds.

### By Car

We are centrally located on the A44 in reach of motorways the M5, M4, M40 and M42

### By Rail

Moreton-in-Marsh's train station is less than a mile from the auction site

### By Plane

The nearest International Airports are Birmingham, 45 miles and Heathrow, 70 miles

## DELIVERY SERVICES FOR BUYERS

We offer an in house packing service for most items and paintings up to 110cm x 80cm. Please email [enquiries@kinghamsauctioneers.com](mailto:enquiries@kinghamsauctioneers.com) for a quote or call 01608 695695 for a quotation.

### For Furniture:

Stephen Morris Shipping PLC, 9 Ockham Drive  
Greenford, London, UB6 0FD  
Tel: 02088 322222

### For Small Items:

Mailboxes, Cheltenham Branch  
Tel: 01242 530130  
Email: [info@mbecheltenham.co.uk](mailto:info@mbecheltenham.co.uk)





## USEFUL INFORMATION FOR BUYERS

Please see full Terms and Conditions at the back of this catalogue.

### Buying at Kinghams Auctioneers Ltd:

There are several ways you can bid at our auctions; in person, by leaving a commission bid, on the telephone and live via the internet.

### Bidding in Person

It is essential that all prospective buyers register with us prior to the auction. Proof of identification will be required in order for a bidding number to be allocated which can then be used when bidding for an item.

### Commission Bids

Kinghams will execute bids if you are unable to attend the sale. Bids can be left with our staff after/during viewing, or in advance by telephone or e-mail: [enquiries@kinghamsauctioneers.com](mailto:enquiries@kinghamsauctioneers.com)

### Telephone Bids

Lines should be booked by 5pm the day before the auction begins. Lines are booked on a first come first serve basis. Full name, address and telephone numbers will be required together with proof of identity. Bank and/or credit/debit card details are necessary to secure the line.

### Live Internet Bidding

Register online via the [saleroom.com](http://saleroom.com), [invaluable.com](http://invaluable.com) and [easyliveauctions.com](http://easyliveauctions.com). Various charges apply, please check with your bidding platform.

### Condition

Bidders must satisfy themselves as to the condition of each lot. Condition reports are available on request. (no later than 48 hours before the sale).

### Buyer's Premium

There is a buyer's premium of 23% plus VAT on the first £200,000 of the hammer price of each lot. 15% plus VAT on the excess of £200,001 and up to £1,000,000 of the hammer price of each lot, and 12% plus VAT on the excess of £1,000,001 of the hammer price of each lot.

### Payment

Must be made in full before items can be removed from the premises. If buyers are unknown to us, we cannot handover purchase until payment has been cleared.

Payment Methods - We accept payment by:

- Cash - up to £9,000  
(subject to money laundering regulations).
- Cheques - following 5 working days clearance.
- Debit/Credit Cards - American Express or Diners Club not accepted.  
We accept maximum payments of £500 on credit card.
- Bank transfer to:  
HSBC Bank, 32 Bridge St., Evesham, WR11 4RU  
Account No.: 51655345  
Account Name: Kinghams Auctioneers Ltd  
Sort Code: 40-20-27  
IBAN: GB91MIDL40202751655345  
SWIFTBIC: MIDLGB22

Please note that a fee of £15 will be added for international bank payments.



# KINGHAMS

AUCTIONEERS • VALUERS

## CONTENTS

### DAY 1

Silver	1 – 240
Jewellery and Watches	241 – 331
Pictures	332 – 354
Furniture and Clocks	355 – 381

### DAY 2

Oriental	382 – 481
Works of Art and Metalware	482 – 522
Paperweights	523 – 555
Glass	556 – 583
Continental Ceramics	584 – 610
Art Pottery	611 – 672
British Ceramics	673 – 713





DAY ONE





## SILVER

1. **A Chinese export silver tea set**, Kwan Wo, Canton circa 1900, squat ovoid form, handles, finials and spouts modelled as bamboo, etched with good luck characters, including kettle with swing handle and stand, teapot and twin handled sugar bowl and cover, teapot 25cm long, 57.68ozt (4) **£2000 - £3000**



2

2. **A Chinese export silver vase**, Wing Fat, Canton circa 1900, channelled cylindrical form applied with prunus and insects, on three tubular supports and domed circular base, 17cm high, 5.44ozt **£100 - £200**



3

3. **A Continental and Chinese silver and mother of pearl snuff box**, circa 1800, chamfered cuboid form, the panels engraved and etched with geometric bands and floral motifs, central shield cartouche, 7cm wide, 3cm high, 5.5cm deep **£200 - £300**

4. **A Chinese export silver photo frame**, circa 1920s, rectangular, bamboo moulded with cast and pierced leaves, ease back, opening 16.5cm x 11.5cm, overall 19cm x 14.5cm **£160 - £220**



5

5. **A Chinese export silver three piece tea set**, circa 1910, boat form planished and embossed with dragons, the jug and bowl with gilt interiors, 28.5cm long, 31.80ozt **£400 - £600**



6

6. **A Persian silver cocktail shaker, tray and beakers**, Isfahan circa 1920s, chased and etched foliate and zoomorphic decoration, including five matched conical tots and rectangular tray, shaker 22cm high, 23.06ozt **£800 - £1200**

7. **An Indian white metal and stone set filigree box**, hexafoil form, reticulated Paisley foliate scroll motifs with three cut stones, 5.5cm diameter, 0.96ozt **£250 - £280**

8. **A pair of Indian white metal beakers**, ogee cup form with fluted lower section, embossed foliate banding to the rims, 9cm high, 7.12ozt (2) **£80 - £120**



9. **A Victorian Anglo Indian Colonial silver mug**, Hamilton and Co., Calcutta circa 1856, flared octagonal section with round rim, on a cast foliate scroll and flame bracket foot, chased with alternating panels of foliate scrolls and Mannerist cartouches, S scroll handle, 11cm high, 7.52ozt **£180 - £220**



10

10. **A Persian silver bowl**, 19th century, double walled and embossed in relief with roundels of Hindu figures, between lappet borders, on three foliate and lions paw feet, 11cm diameter, 5.46ozt **£60 - £100**

11. **An Indian silver filigree and parcel gilt box**, 18th century, oval form, stepped lid, decorated with close coiled foliate scroll design, 9cm x 6.5cm, 2.91ozt **£500 - £600**



12

12. **A large Indian white metal menu holder**, repousse embossed cartouche plaque form with bands of farming scenes, on ball feet and wire loop support, 12.5cm high, 2.55ozt **£80 - £120**

13. **A Hanau silver twin handled dish**, import marks London 1890, boat form, cast and chased Rococo scroll and shell decoration with birds of prey, on four foliate horn feet, 17cm long, 6.13ozt **£100 - £150**

14. **A Maltese silver filigree letter opener or page turner**, Malta circa 1970, reticulated foliate scroll and feathered design, the handle with open Maltese Cross and floral buds, 21cm long, 1.02ozt **£30 - £50**



11



15

15. **A French Napoleon III silver wine taster**, circa 1870, set with an Oudine medal, the handle in the form of a coiled snake, 9cm diameter, 3.68ozt **£150 - £200**

16. **A set of eight small German silver napkin rings**, Moritz Stumpf and Sohn, Danzig circa 1910, octagonal section squat barrel form with beaded rims, 2.8cm diameter, 1.91ozt (8) **£80 - £120**

17. **A silver spice tower**, probably Middle Eastern, the open filigree compartment and pyramidal spire with bell, on a knopped and stepped pedestal foot, 24.5cm high, 3.33ozt **£120 - £180**

18. **A French silver snuff box**, circa 1880, cuboid form with inset hinged lid, engine turned to the top and bottom, gilt interior, 4.5cm x 8cm, 1.87ozt **£40 - £70**

19. **A miniature German silver wager cup**, circa 1900, cast as a woman with raised arms and foliate supports, chased and embossed scroll design, 8.5cm high, 0.79ozt **£30 - £50**



20

20. **A Norwegian silver gilt and plique a jour enamelled spoon**, Johan Kjaerland, Bergen circa 1890, pear shaped bowl on a twisted stem with coiled scroll design terminal in green yellow and red enamel, 14cm long, 0.55ozt **£180 - £200**



21

21. **An Austrian silver gilt and enamelled bottle**, Georg Adam Scheid, Vienna 1866, the cylindrical glass body overlaid with milled filigree and plique a jour enamel casing, the lid with bands of cloisonne foliate scrolls and Vitruvian scroll bands, 7cm high **£80 - £120**



22

**22. An Austrian silver and enamelled cigarette case**, Georg Adam Scheid, Vienna circa 1890, cushioned rectangular form, the lid with a champléve polychrome enamel of a woman in chiffon dress, parasol and hat box, gilt interior, 9.5cm x 6cm, 3.85ozt **£100 - £200**



23

**23. A Continental silver and enamelled vesta case**, rectangular section with painted horses head in polychrome enamel, 3.5cm x 4.5cm, 0.87ozt **£80 - £120**



24

**24. A Continental silver gilt and enamelled box**, circular drum form, decorated in blue and white guilloché enamel, painted with rose swags and a gilt laurel wreath, to the hinged lid, 5.5cm diameter, 2.15ozt **£100 - £200**



25

**25. A 19th century silver, mother of pearl and micro mosaic purse**, the central onyx set still life of a vase of flowers, within pierced foliate scroll cartouche overlaid onto an ogee bordered shell panel, opening to reveal a washed silk three division interior, 8cm x 6cm **£450 - £550**

**26. An early 19th century Portuguese silver snuff box**, JG, Porto circa 1800, cuboid form, the lid chased and engraved with a mountain landscape view within foliate scroll ground, reeded banding to the side and base, 7cm long, 1.48ozt **£200 - £250**

**27. A large 18th century German silver ladle**, Christian Drentwert, Augsburg 1765, the oval serpentine rimmed bowl on an elongated stem cast with Rococo scroll and floral terminal, 44.5cm long, 10.16ozt **£480 - £520**

**28. A Continental silver snuff box**, oval form, embossed with Rococo scroll cartouches and floral band to the edge, 5cm, 0.71ozt **£60 - £80**



29

**29. A Dutch silver jug**, Zilverfabriek Voorschoten 1939, baluster form with whiplash ebony handle, 9.5cm high, 3.04ozt **£60 - £100**



30

**30. A Latvian silver purse**, probably Julius Blums, Riga circa 1923, cushioned rectangular form, satin finish with engraved Russian folk style decoration, set with a red gemstone cabochon clasp, opening to reveal a three section pocket interior, on chain, 17cm x 8.5cm, 8.78ozt **£280 - £320**

**31. A Hanau silver box**, import marks Bethold Muller, London 1910, cuboid form, embossed in relief with oval profile portrait busts of George III and Queen Charlotte, between fruiting swags, musical putti and birds, bordered in guilloché bands, 13cm long, 3.5cm deep, 2.5cm high, 3.64ozt **£200 - £250**

**32. A Continental gilt white metal belt**, twelve panels, each with blind fret cast motifs of birds and foliage, linked by chain loops, 62cm long, 6.94ozt **£600 - £650**

**33. A pair of modern Continental silver four branch, five light candelabra**, each of octagonal section stepped and knob column form with square section S form arms and conical sconces, weighted, 26cm high, 32cm diameter **£1100 - £1300**



34

**34. An 18th century Continental silver and parcel gilt snuff box**, possibly French circa 1740, ogee edged oval form, palm fitting, the lid cast with the beheading of John the Baptist, engraved to the base with swan and bird of prey, foliate scroll and diaper panels, the interior lid with rabbit and bird, 8cm, 2.28ozt **£320 - £380**





35

35. A Dutch novelty silver pill box, Netherlands 1886, in the form of a serpentine fronted armoire, embossed with inscription to the reverse, side hinged lid, 4cm high, 0.61ozt **£50 - £80**

36. A large Imperial Russian silver jug or ewer, Vavara Baladanova, Moscow 1895, the spherical body engraved with vacant cartouche of feathered quiver and floral bouquets, below geometric lappet bands, the knopped and flared neck with S scroll handle, on stepped foot, 34cm high, 22.99ozt **£1200 - £1500**

37. A 19th century Continental silver taperstick, acanthus baluster form, on ogee cushion domed circular base, beaded border and bright cut engraved, 12.5cm high, 4.07ozt **£120 - £180**



36

38. A set of six mid 18th century style cast white metal teaspoons, each of naturalistic open foliate vine design with leaf bowls, apparently unmarked, 12cm long, 2.89ozt (6) **£100 - £150**



39

39. A 17th century Continental silver and parcel gilt beaker, probably German, stipple engraved date 1603, cylindrical ogee form, repousse embossed with flowering foliage, 9.5cm high, 4.38ozt **£300 - £350**



38



40

**40. WMF, a novelty silver plated servants bell push**, circa 1910, realistically modelled as a hot air balloon, electric button to the basket, marked, 9cm long **£300 - £400**

**41. Two American silver facsimile caddy spoons**, Metropolitan Museum of Art, modelled after examples in the museum collection by Sarah Snatt, London 1817 and Joseph Willmore, Birmingham 1790, scalloped bowls, one with cast wildflower decoration, the other with shell handle, stamped 925 MMA, 8cm long, 0.92ozt (2) **£30 - £50**



44



42

**42. An American silver novelty money barrel**, Gorham, RI circa 1950, engraved with motto and cartouches of children and nursery rhymes, screw fitting flush top, 6.5cm high, 2.37ozt **£150 - £180**

**43. A Tiffany and Co sterling silver card case**, import marks London 1994, plain rectangular form, 9.5cm x 5.5cm, 1.69ozt **£100 - £120**



47



**44. Tiffany and Co., an American silver coffee pot or ewer,** import marks London 1897, slender footed baluster form, with tapered spout and whiplash handle, flared conical lid with spherical knob, 22.5cm high, 11.11ozt **£320 - £380**

**45. A Victorian Irish silver bowl,** West and Son, Dublin 1898, rounded with everted ogee denticulated rim, embossed with flowers, on three feathered and stepped pad feet, 10cm diameter, 3.24ozt **£270 - £320**

**46. A George III Provincial silver tankard,** John Mitchison, Newcastle 1784, banded conical form, with hollow ear handle, 15cm high, 15.85ozt **£650 - £700**

**47. A large George III Scottish silver goblet or chalice,** Luke F Newlands, Edinburgh 1818, campana urn or thistle form, the bulbous body three quarter reeded, on stepped and splayed foot, gilt interior, 19.5cm high, 15.18ozt **£550 - £650**

**48. A pair of Scottish Victorian silver berry spoons,** Andrew Wilkie, Edinburgh 1839, Fiddle pattern, engraved to the stems and embossed with fruit to the gilded and crimped bowls, 23cm long, 4.57ozt (2) **£80 - £120**

**49. A Victorian silver meat skewer,** George Adams, London 1871, Kings Pattern, engraved with the badge of the 104th Bengal Fusiliers, 20.5cm long, 1.53ozt **£100 - £120**



50

**50. A Victorian silver and agate handled knife and fork,** Harrison Brothers and Howson, Sheffield 1880, chamfered tapered rectangular section handles, 21.5cm long (2) **£120 - £180**

**51. A George IV and Victorian silver gilt knife,** the blade William Eaton and William Fearn, London 1823, the handle George Adams, London 1845, Elizabethan pattern, 21.5cm long **£50 - £80**

**52. A pair of George V silver toddy ladles,** Cooper Brothers and Sons Ltd., Sheffield 1928, rounded bowls with everted rims and lips, on plain point stems, 12cm long, 1.58ozt (2) **£60 - £80**

**53. A pair of George III silver sauce ladles,** John Lampfert, London 1768, Onslow Pattern, scalloped bowls, 20.5cm long, 3.22ozt (2) **£150 - £200**

**54. A pair of Victorian silver fish servers,** Martin, Hall and Co., Sheffield 1873, Venetian Pattern, the blade and fork pierced and bright cut engraved, 34cm long, 11.73ozt (2) **£280 - £320**

**55. A set of twelve Victorian silver teaspoons,** John and Henry Lias, London 1840, Fiddle Pattern, 14.5cm long, 7.60ozt (12) **£80 - £120**



56

**56. A pair of George III cast silver sugar tongs,** Joseph Adams, Birmingham 1774, reticulated and chased with serpentine gadrooned edges and foliate branches, shell pad terminals, the arms united by a bright cut sprung strap, 12.5cm long, 1.14ozt **£30 - £50**

**57. A George III Old Sheffield Plate fish slice,** circa 1810, the reticulated blade engraved to both sides with husk and foliate scroll design, beaded handle, 31.5cm long **£30 - £50**

**58. A collection of George III and later silver teaspoons,** various maker and dates, together four silver napkin rings, engine turned, 8.40ozt **£70 - £100**

**59. A collection of George II and George III silver table spoons,** various makers and dates from London 1760, Old English pattern, 22.5cm long, 10.50ozt (5) **£80 - £120**

**60. A George III silver fruit set,** the tablespoons William Sumner and Richard Crossley, London 1780, later engraved and embossed to the bowls with fruit and foliage, including sifting ladle, 22.5cm long, 7.37ozt (3) **£200 - £250**

**61. A William IV silver caddy spoon,** James Beebe, London 1837, Fiddle pattern, 9cm long, 0.50ozt **£60 - £80**

**62. A boxed set of George V silver teaspoons,** Harrods Ltd., London 1934, Albany Pattern, in original fitted case, 11cm long, 2.09ozt (6) **£30 - £50**

**63. Two George III and IV silver caddy spoons,** Peter Kempson, Birmingham 1821 and Josiah Snatt, London 1816, bright cut and Fiddle Thread and Shell patterns, each with scalloped bowls, 10cm long, 0.84ozt (2) **£50 - £80**



67

**67. A Victorian silver travelling dining set**, Brownett and Rose, London 1860, the large beaker in a Moroccan leather case, containing a stemmed goblet surrounded by four fitted compartments for folding fork, corkscrew spoon, knife and double ended measuring medicine spoon, the cup holding a lidded three section condiment container of rounded beaker form, the two screw fitting lower compartments with pierced covers, gilded to the interiors, case 12.5cm high, 17.43ozt **£1500 - £1800**

**68. A Victorian silver hard cased purse**, George Unite, Birmingham 1879, cushioned form, the interior with four section washed silk interior, 8cm x 5.5cm, 2.33ozt **£80 - £120**

**69. A George V silver and tortoiseshell hand mirror**, David Moss and Co., Birmingham 1929, pentagonal shield form with inlaid husk and honeysuckle cartouche, pointed octagonal section handle, 30.5cm long **£60 - £80**

**70. An Edwardian silver mounted cut glass and tortoiseshell scent bottle**, London 1909, the spherical body with hobnail rosettes, the hinged lid inlaid with shield and wreath, 10.5cm high **£30 - £50**

**71. A George V silver mug**, J and R Griffin, Chester 1921, bulbous churn form with foliate S scroll handle, gilt interior, 8cm high, 2.28ozt **£30 - £50**

**72. An Edwardian fitted travel case**, Drew and Co., London 1907, the green Moroccan leather suitcase with outer canvas cover, opening to reveal an interior of silver mounted glass jars, various stationary and toilet items, lined in washed silk, 45.5cm wide, 34cm deep, 16cm high **£100 - £150**



64

**64. A George II silver snuffer tray**, William Coles, London 1742, ogee rimmed dumbbell form, with open S C scroll side handle, on four stepped pad feet, 18.cm long, 8.77ozt **£350 - £450**

**65. A George II silver salver**, Henry Brind, London 1749, ogee foliate shell and ribbon rim, on three double C scroll and pad feet, 18cm diameter, 8.67ozt **£250 - £300**

**66. A pair of George III Old Sheffield Plate salt cellars**, circa 1780, pedestal form with fluted lappets and reeded rim, 6.5cm high (2) **£40 - £60**



73. A George V silver reticulated dish or platter, Atkin Brothers, Sheffield 1931, quatrelobed circular form, pierced foliate scroll design, on a stepped base with four lambs tongue bracket feet, 24cm diameter, 14.79ozt **£150 - £250**

74. A pair of Elizabeth II silver figures, Sarah Jones, London 1988, realistically modelled as long haired dachshunds, 6cm long, 4.11ozt (2) **£60 - £80**



75

75. An Elizabeth II novelty set of six menu holders, Thomas Charles Jarvis, London 1991, in the form of a frog band, comprising conductor, violinist, guitarist, drummer, saxophonist and trumpet player, approximate weight all in 6.31 ozt, height of largest 6cm (6) **£200 - £300**

76. An Elizabeth II silver model of a dog and a novelty wax seal, SMC, London 1978, modelled as dachshunds, 4cm long, 1.85ozt (2) **£40 - £70**

77. A recent silver novelty or 'toy' band, probably continental, various marks, some indistinct including .925, in the form of a seven piece dog band, comprising conductor, trombonist, French horn player, violinist, clarinet player, cello player and saxophonist, approximate weight all in 10.39 ozt, height of largest 5cm (7) **£150 - £200**



78

78. An Edwardian silver and Shibayama cabochon medal, together with another, William Adams, Birmingham 1909, the central ivory roundel inlaid with coral and mother of pearl flower, within chased border, presentation inscription Mrs W B Inglis Medal, the other of cartouche form with gold bosse centre, 6cm long, 1.10ozt (2) **£40 - £70**



79

79. A Victorian silver bowl, Thomas Bradbury and Sons, London 1873, footed and rounded form with beaded rim, embossed with panels of different animals, between geometric borders, 12cm diameter, 5.17ozt **£270 - £320**

80. A pair of silver plated mussel eaters, realistically modelled as shells, with sprung hinges, 6cm long (2) **£30 - £50**

81. An Edwardian silver trophy bowl, Martin, Hall and Co., Sheffield 1910, footed conical form, with ribbed band, on a turned ebonised base, inscribed the Brailes Perpetual Trophy, for the Best Pure Continental Breed Beast, 25cm diameter, 30.10ozt **£300 - £500**



82

82. A pair of William IV silver novelty Harlequin sugar tongs, Thomas Dee and John Fargus, London circa 1830, realistically cast, with coiled snake loop handles, 11cm long, 1.43ozt **£180 - £220**



83

**83. A Victorian silver mug**, Hunt and Roskell, Late Storr and Mortimer, London 1887, footed conical form, cast and chased in relief with naturalistic fruiting vine and branch handle, gilt interior, 9cm high, 6.41ozt **£800 - £1000**

**84. A George III silver snuff box**, William Pugh, Birmingham 1812, hip fitting, with reeded bands, inset hinged lid, gilt interior, 6cm long, 1.06ozt **£180 - £220**

**85. A Victorian silver tea caddy**, Thomas Hayes, Birmingham 1894, half reeded boat form with lions mask and ring handles, hinged lid with ebony finial, 12.5cm high, 7.08ozt **£80 - £120**

**86. A George V silver cigar box**, Asprey and Co., London 1914, heavy gauge cuboid casket form, with reeded bands on four plain bracket feet, cedar lined with gilt lid, 18cm long, 6.5cm high, 9cm deep, 25.26ozt **£450 - £550**



87

**87. A Victorian silver scallop shell dish**, Thomas Bradbury and Sons, London 1867, the bowl with shaped handle, on an inverted cast shell foot, 9cm wide, 2.14ozt **£120 - £180**



88

**88. A George III silver mounted coconut cup**, London 1798, the hemispherical body with plain banded rim, on a splayed foot, 15.5cm high **£500 - £600**



89

**89. A Victorian silver mounted glass scent bottle**, probably Richardson, Birmingham 1897, cased blue over colourless, conical body with lens cut honeycomb design, embossed foliate lid, 13cm long **£120 - £180**

**90. A George IV silver gilt and coral baby's rattle teether**, Charles Rawlings, London circa 1820, heavily chased in relief with millefleur design between facet cut beaded bands and open swags with bells, whistle and suspension ring, 15cm long **£300 - £400**

**91. A Victorian silver snuff box**, Edward Smith, Birmingham 1861, lozenge section rectangular form, inset hinged lid and engine turned pinstripe decoration, 8cm x 4.5cm, 2.21ozt **£50 - £80**





98

92. A Victorian silver and velvet purse, Henry Williamson, Birmingham 1900, embossed and chased in relief with pastoral scenes in foliate scroll borders, the purse plate suspended on two chains from the belt hook, 19cm long **£250 - £280**

93. A George V silver gilt nail buffer, Finnigans Ltd., London 1931, navette form, engine turned and cast with floral band and ropetwist border, 13.5cm long **£100 - £150**

94. A Victorian silver snuff box, George Unite, Birmingham 1873, ogee serpentine edged cuboid form, etched and chased with foliate panels, 7cm long, 4.5cm deep, 2.42ozt **£40 - £70**

95. A George IV silver vinaigrette, William Simpson, Birmingham 1827, cuboid form, the lid chased and engraved in relief in the Chinese style with foliate sprigs, engine turned to the base, gilt interior and pierced grille, 3.5cm long, 0.69ozt **£200 - £250**



96

96. A George V silver Hanukkah Menorah, Rosenzweig, Taitelbaum and Co., London 1929, eight symmetrical branches and further 9th arm, supported on a hexagonal section knopped stem, double ogee foot and octagonal base, engraved with floral motifs, 25.5cm high, 9.98ozt **£350 - £400**



100

97. An Elizabeth II silver letter opener, Royal Irish Silver Company, Sheffield 1981, the terminal cast in the form of a crusader knight, 19.5cm long, 2.22ozt **£120 - £180**

98. An Elizabeth II novelty silver three piece cruet, J.M. M.G., London 1996, realistically modelled as Emperor penguins in different poses, one with a chick, comprising salt, pepper and mustard pot with blue glass liner and spoon, approximate weight all in 18.91 ozt, height of largest 9.5cm (3) **£400 - £600**

99. An Elizabeth II novelty 'toy' band, various makers, Birmingham 1991, in the form of a six piece cat band comprising conductor, cymbal player, flute player, violin player, cellist and saxophone player, approximate weight all in 13.11 ozt, height of largest 6cm (6) **£150 - £200**

100. An Elizabeth II silver novelty two piece condiment set, P.J.M. London 1999, salt and pepper pots each in the form of a pig in different poses, approximate weight all in approximately 20.56 ozt, height of largest 8.5cm (2) **£400 - £600**

101. An Elizabeth II novelty silver pepper pot, maker P.J.H., Birmingham 1993, in the form of a standing owl, realistic plumage, inset glass eyes, approximate weight all in 1.86 ozt, height 6cm **£100 - £150**



101



102

102. A Victorian novelty silver pepper pot, Henry Wilkinson and Co., Sheffield 1879, in the form of a Champagne cork, screw fixing base and gilt interior, 5cm high, 0.98ozt **£150 - £200**



103

**103. A pair of George V silver novelty menu holders**, Henry Williamson Ltd, Birmingham 1923, the chamfered rectangular bases each modelled with a man fishing beside fret pierced script, weighted, 7.5cm high, 11cm long (2) **£500 - £800**

**104. A pair of novelty silver plated napkin rings**, in the form of dachshunds, each dog with a bisected and arched elongated body, stamped marks, 12.5cm long (2) **£20 - £40**

**105. An Elizabeth II silver novelty knife rest**, Thomas Charles Jarvis, London 1996, modelled as an elongated bulldog, 7.5cm long, 1.51ozt **£40 - £70**



106

**106. An Elizabeth II novelty silver pepper pot**, Whitehill Silver and Plate Co., London 1999, modelled as a dog with cap and bowtie, screw fixing head, 9cm high, 4.78ozt **£300 - £400**



107

**107. A pair of Victorian silver handled scissors**, William Comyns, London 1887, the handles as Witch's hearts, steel blades, 15cm long **£150 - £200**

**108. A pair of George III Old Sheffield Plate wine coasters**, circa 1810, bordered pellet decoration and gadrooned ogee serpentine rims, turned beech bases, 15.5cm diameter **£40 - £60**

**109. Two George III Old Sheffield Plate wine coasters**, circa 1810, one embossed with Greek key band, the other with bordered pellet design, turned mahogany and beech bases, 15cm diameter (2) **£30 - £50**

**110. A Victorian silver wine label for Sherry**, George Unite, Birmingham 1865, fretted cartouche form, chased foliate scroll decoration, on rolo chain, 5.5cm wide, 0.27ozt **£50 - £80**



111

**111. A Victorian silver wine label for Gin**, George Unite, Birmingham 1865, fretted cartouche form, chased foliate scroll decoration, on rolo chain, 5.5cm wide, 0.27ozt **£50 - £80**





112

112. A Victorian silver wine label for Port, George Unite, Birmingham 1865, fretted cartouche form, chased foliate scroll decoration, on rolo chain, 5.5cm wide, 0.26ozt £50 - £80

113. A Victorian silver mounted cut glass ice bucket, probably Thomas Webb for William Hutton, London 1895, the optic wave moulded body decorated with floral festoons and gadrooned C scrolls, below hobnail apron, 16.5cm high £200 - £300

114. Two large Victorian silver and glass spirit flasks, Drew and Sons, London 1889 and Asprey and Asprey, London 1887, one with wrythen ribbed design the other in alligator leather, 21cm high (2) £200 - £300

115. A set of four Victorian silver salt cellars, Martin, Hall and Co., London 1874, squat cauldron form, embossed and chased with floral motifs and vacant cartouches, gilt interiors, beaded rims, on three stepped point feet, 6cm diameter, 3.81ozt (4) £140 - £180



116

116. Two Edwardian silver Kiddush cups, Jacob Fenigstein and Rosenzweig and Taitelbaum, Birmingham 1910, bell shaped bowls on baluster stems, engraved decoration to each, 12cm and 10.5cm high, 2.62ozt (2) £100 - £150

117. A Victorian silver sugar basket, Henry Holland, London 1859, pedestal form, open wire and ropetwist bowl applied with embossed husk swags, roundels and fruiting vines, on a fluted sweeping foot, blue glass liner and swing handle, 17cm high, 5.37ozt £300 - £400



118

118. A pair of Victorian silver salt cellars, Nathan and Hayes, Birmingham 1892, pedestal ogee oval boat form, reticulated with Neoclassical fluting and embossed laurel swags, ring handles and beaded border, each with blue glass liner, 13cm long, 5.90ozt (2) £140 - £180

119. An Elizabeth II silver and enamelled hand mirror, Albert Carter, Birmingham 1958, feathered and lobed shield form, cream guilloche enamel with raised gilt fleur de lys motifs, 29cm long £40 - £70



120

120. A George III silver sugar basket, Burrage Davenport, London 1781, Neoclassical pedestal urn form, fluted to the body below four applied relief cast roundels of mourning women, beaded rims and swing handle, 19.5cm high, 6.71ozt £400 - £500

121. A George III reticulated silver mustard pot, Edward Aldridge II, London 1771, cylindrical form, open geometric fret design, flat lid and S scroll handle, 8cm high, 2.60ozt £200 - £250

**122. A George V silver and tortoiseshell powder box**, Collett and Anderson, London 1920, circular with central plaque to the lid, 5.5cm diameter, 1.32ozt **£50 - £80**

**123. A George IV silver snuff box**, Thomas Newbold, Birmingham 1825, cuboid form, engine turned with chased foliate scroll rim and reeded sides, gilt interior, 7cm long, 2.87ozt **£220 - £250**

**124. A William IV silver snuff box**, Thomas Simpson, Birmingham 1837, cuboid form, engine turned to the lid and base, reeded edges and cast foliate thumb piece, gilt interior, 7cm long, 4cm deep, 2.00ozt **£60 - £80**

**125. A George III silver snuff box**, Thomas Phipps and Edward Robinson, London 1803, pellet section tubular form with inset hinged lid, gilt interior, 7cm long, 1.87ozt **£220 - £250**

**126. A pair of Victorian silver candlesticks**, Goldsmiths and Silversmiths Company, London 1899, Corinthian column form, half reeded on splayed square section bases with gadrooned borders, removable sconces, weighted, 18.5cm high (2) **£300 - £400**

**127. A George V silver, enamel and cut glass atomiser**, William Neale and Son Ltd., Birmingham 1928, squat onion form, hobnail cut body, the lid with blue guilloche enamelled decoration, 12cm high **£100 - £150**

**128. A George V silver mounted glass rule**, Padgett and Braham Ltd., London 1928, blue cylindrical rod with engine turned ends, 32cm long **£200 - £250**



130



131



129

**129. An Edwardian silver jug** Goldsmiths and Silversmiths Company, London 1901, shouldered bulbous form, embossed in relief with acanthus lappet and beaded reed band, fluted S scroll handle, 14.5cm high, 13.48ozt **£350 - £450**

**130. A George III silver gilt snuff box**, John Linnit, London 1815, cuboid form, the lid cast in relief with a Dutch genre tavern interior scene, within Rococo scroll border, engine turned to the other exterior surfaces, 7.5cm wide, 2cm high, 5cm deep, 4.23ozt **£750 - £850**

**131. A pair of Elizabeth II silver figures**, B S E Products, London 2005, realistically modelled as dachshunds on hind legs, 10cm high, 12.07ozt (2) **£150 - £200**



134



132. Two silver figures of dogs, stamped marks Sterling and 800, each modelled as a dachshund, one standing, one sitting, 10cm long, 4.19ozt (2)

£60 - £80

133. A William IV or early Victorian Old Sheffield Plate goblet, circa 1835, lobed and fluted campana form on knopped pedestal foot, 16cm high

£40 - £70

134. A matched pair of Victorian novelty silver salt and pepper pots, Deakin and Francis, Birmingham 1876 and 1893, realistically modelled as Smeaton's Edystone Lighthouse, 13cm high, 5.59ozt (2)

£1200 - £1800

135. An Elizabeth II silver figure of a dog, Sarah Jones, London 1984, modelled as a dachshund, sitting, head turned, 4.5cm long, 1.85ozt

£30 - £50

136. An Edwardian silver caster, Charles Boyton and Sons, London 1909, footed ogee baluster form with gadrooned rims, 22cm high, 5.83ozt

£40 - £70

137. A Victorian silver snuff box, George Unite, Birmingham 1883, oval sectioned rectangular form with inset hinged lid, chased and engraved in the Anglo Indian style with Persian foliate cartouches, gilt interior, 9cm x 5cm, 2.73ozt

£60 - £80



138

138. An Elizabeth II silver and enamelled compact, Henry Clifford Davis, Birmingham 1952, the lid painted with a yacht in full sail on lake, on guilloche enamel ground, the back engine turned barley design, 10.5cm diameter, 5.94ozt

£150 - £250



139

139. A George V silver jug, S Blackensee and Sons, Chester 1932, footed conical form, turned wooden handle and finial, 22cm high, 16.92ozt

£150 - £250

140. An Edwardian silver bread basket, John Round and Son, Sheffield 1905, oval footed form with ogee rim and swing handle, 26cm high, 17.95ozt

£200 - £300

141. A pair of Edwardian silver salt and pepper pots, Barker Brothers, Chester 1909, banded urn form with ogee domed lids, in fitted case, 8.5cm high, 1.69ozt (2)

£50 - £80

142. A George V silver teapot, Robert Pringle, Birmingham 1932, ogee boat form, wooden scroll handle and finial, on squat bun feet, 26cm long, 20.97ozt

£150 - £250



143

143. An Edwardian silver and enamelled automobilium paper knife, Vaughton and Sons, Birmingham 1910, the terminal cast with a car and passengers, above Humber in blue enamel, ivory pointed blade, 17.5cm long

£150 - £200

144. A set of ten Elizabeth II silver and parcel gilt commemorative spoons, library of Imperial History, London 1975, American Royal Family 1607-1776, each terminal cast with the bust of a different monarch, in fitted case, 11.5cm long, 10.61ozt (10)

£150 - £200

145. A George V silver collapsible travel beaker, George Unite, Birmingham 1922, footed conical form, in fitted leather case, 2cm to 8cm high, 2.51ozt

£180 - £220

146. An Edwardian silver stamp vesta case, William Light, Birmingham 1906, single hinged lid with rigid flap, chased foliate scroll decoration and vacant cartouche, 4.5cm long, 0.61ozt

£80 - £120

147. A set of ten Elizabeth II silver and enamelled commemorative teaspoons, Toye, Kenning and Spencer, Birmingham 1977, The Queen's Beasts Collection, each terminal cast with a different heraldic emblem holding a polychrome enamel shield, limited edition, in fitted case, 14cm long, 15.36ozt (10)

£200 - £250



148

148. George V silver and enamelled sweetmeat tongs, Cohen and Charles, London 1911, modelled as a butterfly, orange and white guilloche enamel with brown painted speckles, scissor action, 7.5cm, 0.73ozt

£300 - £400

149. A pair of Edwardian silver and enamelled menu holders, Levi and Salaman, Birmingham 1909-1910, the circular turquoise guilloche enamel plaques on plain bases, 3.3cm diameter, 1.22ozt (2)

£120 - £180

150. A large Edwardian silver mounted glass inkwell photo frame, John Grinsell and Sons, Birmingham 1909, cuboid form with hobnail cut base, the lid with hinged rotating lid containing photo aperture, 10cm cube

£120 - £180

151. A George IV silver snuff box, Thomas Newbold, Birmingham 1829, cuboid form, engine turned with raised chased borders, gilt interior, 6cm x 3.5cm, 1.45ozt **£80 - £120**

152. A George III silver snuff box, John Shaw, Birmingham 1814, the inset hinged lid engraved with a coaching scene, milestone inscribed York, 6cm x 4cm, 1.12ozt **£200 - £300**



153

153. A William IV silver castle top snuff box, Nathaniel Mills, Birmingham 1830, rectangular section, the hinged lid cast in relief with Windsor Castle, engine turned sides and tartan base, 6cm x 4cm, 1.46ozt **£200 - £400**

154. A George V silver sauce boat, Edward Viner, Sheffield 1934, together with two Elizabeth II silver wine labels for Brandy and Whisky, tradition helmet form, 14.5cm long, 4.30ozt (3) **£40 - £60**

155. A Victorian silver topped and enamel glass jar, Hayes Brothers, Birmingham 1890, cylindrical hobnail cut body with a crimped and flute domed lid, central blue green roundel, 10cm high, 8cm diameter **£70 - £100**

156. A George III silver salt cellar, Hester Bateman, London 1777, squat ovoid form, on three stepped pad feet, with blue glass liner, 7cm diameter, 1.02ozt **£30 - £40**

157. A George III Old Sheffield Plate twin handled cup, circa 1790, footed form with bell bowl, reeded S form handles with heart shaped terminals, embossed with laurel swags held by rings, above serpentine reeding, 12.5cm high **£50 - £80**

158. A George III Old Sheffield Plate mustard pot, Matthew Boulton, Birmingham circa 1810, straight sided oval form, domed lid and gadrooned rim, blue glass liner, stamped marks, 7cm high **£40 - £70**

159. A George III Old Sheffield Plate tea caddy, circa 1780, straight sided oval form, bright cut with foliate bands, the flat lid with lappet rosette and loop handle, 11cm high **£120 - £180**

160. A Victorian silver plated Argyll, Adams and Son, London, circa 1840, domed form with ogee lid and ivory finial, S scroll handle and two spouts, 16.5cm high **£70 - £100**



161

161. A George III Old Sheffield Plate sauce boat and jug, by the same maker, circa 1775, the jug of pedestal Neoclassical helmet form, beaded to the foot, each with bisected reeded tendrill handles with foliate terminals, 16cm high (2) **£60 - £80**

162. An Elizabeth II silver bowl, Elkington and Co., Birmingham 1960, rounded form on cylindrical foot cast with bead and rosette band, 20.5cm diameter, 16.22ozt **£300 - £400**

163. A George VI silver three piece brush and mirror set, W G Sothers Ltd., Birmingham 1947, stepped and engine turned with geometric lozenge designs, in fitted box, 30.5cm long **£30 - £50**

164. A George VI silver tea strainer and stand, E Silver and Co., Sheffield 1947, the rounded footed bowl stand with cast rattan band, supporting a pierced strainer with fret carved handle and rest, 13cm long, 2.98ozt **£40 - £60**

165. An Elizabeth II silver tea strainer and stand, J B Chatterley and Sons, Birmingham 1986, the rounded pedestal bowl supporting a pierced strainer with fret carved handle and rest, 11.5cm long, 2.75ozt **£40 - £70**



166

166. A George III Old Sheffield Plate basket, circa 1780, pedestal boat form, reticulated and bright cut in the Neoclassical style, half fluted, swing handle and glass liner, 20cm high, 15cm long **£40 - £70**

167. A George III Old Sheffield Plate dish or plate, circa 1790, circular charger form with gadrooned rim, 24cm diameter **£30 - £50**

168. A matched pair of Victorian and Edwardian silver candlesticks, Thomas Bradbury and Sons, London 1893 and 1905, reeded and multiknopped baluster stems, on square section gadrooned bases, removable sconces, 26cm high **£450 - £500**

169. An Edwardian silver and 9 carat gold vesta case, Deakin and Francis, Birmingham 1902, cushioned hip forming shape, facsimile engraved, 4.5cm long, 1.59ozt **£70 - £100**

170. An Elizabeth II silver sugar caster, J B Chatterley and Son, Birmingham 1954, baluster form in the Queen Anne style, 16cm high, 4.70ozt **£40 - £70**

171. A pair of George III Old Sheffield Plate candlesticks, circa 1770, the splayed square bases with vertically beaded Tuscan column supports, further beading to the borders, 24cm high (2) **£120 - £180**

172. Two George III Old Sheffield Plate chambersticks, circa 1800, of small proportions, circular and oval forms with reeded rims, 5.5cm high (2) **£30 - £50**





173

**173. A George III Old Sheffield Plate reticulated bougie box**, circa 1780, cylindrical form, bright cut decorated with pierced bands, the snuffer attached by a chain, 8cm high **£40 - £70**

**174. A set of six Elizabeth II silver cocktail sticks**, Adie Brothers, Birmingham 1956, each with a cast cockerel finial, in fitted case, 7.5cm long, 0.42ozt **£30 - £50**

**175. A George IV silver jug**, London 1821, half reeded helmet form with gadrooned rim, on four ball feet, 14cm long, 4.42ozt **£30 - £50**

**176. A George IV silver teapot**, Joseph Angell, London 1825, half reeded boat form with gadrooned rim, fruitwood handle, on four spherical feet, 27.5cm long, 16.39ozt **£200 - £300**



177

**177. A Victorian silver twin handled bowl**, Henry Wilkinson and Co., Sheffield 1848, lobed melon form with crimped rim, acanthus ear handles, etched and engraved with chased foliate scroll and floral cartouches, on four bracket feet, gilt interior, 15.5cm high, 11.44ozt **£100 - £200**

**178. A Victorian silver bowl**, Edouard Henry Dreyfous, London 1901, footed rounded form, embossed with ribboned wag festoons, half reeded, 10.5cm diameter, 4.54ozt **£40 - £60**



179

**179. A William IV silver teether rattle**, with whistle, Taylor and Perry, Birmingham 1833, embossed and chased with foliate scroll and floral bands, seven bells and a coral teether, 12cm long, 1.88ozt **£80 - £120**

**180. A Victorian silver and glass spirit flask**, Hilliard and Thomason, Birmingham 1900, straight sided lozenge section with leather cover, bayonet cap, 15cm high **£150 - £200**

**181. Ancient Order of Foresters**, a Victorian silver sash badge, Desire Narcisse, London 1846, eight pointed, embossed with the stag's head shield and bugle crest, with oak leaf wreath and acanthus points, 9cm diameter, 0.68ozt **£40 - £70**

**182. A George V silver sovereign case**, Dennison Watch Case Co., Birmingham 1911, plain circular fob form, 5cm long, 0.80ozt **£120 - £180**

**183. A George V silver sovereign case**, William Hair Haseler, Birmingham 1913, side opening patent mechanism, 5cm long, 0.40ozt **£120 - £180**



184

**184. A Victorian silver and glass dual scent bottle vinaigrette**, Sampson Mordan and Co., London 1873, plain oval glass body with sprung push button cap, the base with hinged lid and foliate pierced and engraved grille, 9cm high **£350 - £400**

**185. A Victorian silver dwarf candlesticks**, Horace Woodward and Co., London 1885, half reeded pedestal urn form on domed and stepped base, with removable sconces, weighted, 9cm high (2) **£150 - £200**

**186. A George VI silver cigar box**, Finnigans Ltd., Birmingham 1938, heavy gauge, cuboid form with engine turned cushion lid, cedar lined interior and gilded lid interior, 14cm long, 5cm high, 9cm deep, 18.29ozt **£180 - £220**



187

**187. A George VI silver dog trophy**, Blackmore and Fletcher Ltd., London 1936, modelled as a Scottie dog and lamppost on a wooden plinth, inscribed Top Dog 1937, 16.5cm high **£150 - £180**



188

**188. Christopher Dresser (attributed), an Aesthetic Movement silver plated vase**, trumpet necked conical gourd form, planished to the main body, fluted channels to the flared neck, 15cm high **£40 - £70**



189

189. **W A S Benson, an Arts and Crafts silver plated teapot**, circa 1890, ogee form with insulated ear handle and chamfered square section spout, turned fruitwood pear shaped finial, 25.5cm long  
£70 - £100

190. **Stevens and Williams (attributed), an Arts and Crafts silver lidded glass preserve pot and spoon**, D and M Davis, Birmingham 1905, the dimpled ovoid ogee body applied with alternating wrythen bands and green teardrop trails, slightly domed lid with loop handle, 13.5cm high  
£250 - £300



190

191. **A pair of Edwardian silver mounted wrythen glug glug decanters**, GS&FS, Birmingham 1905, 12 inches high incl. stopper (2)  
£100 - £200

192. **John Walsh Walsh, an Arts and Crafts silver mounted glass decanter**, Thomas Latham and Ernest Morton, Birmingham 1901, waisted hourglass form, optic moulded with stylised poppy or tulip flowers in the Art Nouveau style, the collar with four lipped pourers, hollow stopper and star cut base, 29cm high

Note: the design is recorded as number 375896 in the Walsh Walsh pattern books and dated June 1901.  
£80 - £120



192



193

193. **A E Jones, an Arts and Crafts silver and Ruskin cabochon tea caddy**, Birmingham 1903, cylindrical form, planished, on three splayed bracket feet, six turquoise roundels within incised line and dot band, the flared conical lid with spherical finial, 13cm high, 5.59ozt  
£1500 - £1800





194

**194. A E Jones, an Arts and Crafts silver pedestal bowl,** Birmingham 1912, planished, rounded conical form on knop stem and splayed foot, repousse embossed with bands of geometric knotted ribbons and applied ropetwists, 19.5cm diameter, 14cm high, 12.39g **£400 - £600**

**195. A E Jones, an Arts and Crafts silver twin handled dish,** Birmingham 1916, shallow circular planished form with wire handles set with cast Tudor rose motifs, 25.5cm long, 5.89ozt **£250 - £350**

**196. An Arts and Crafts style white metal mug,** planished, footed round beaker form with banded S scroll handle, 8cm high, 6.18ozt **£80 - £120**



197

**197. An Arts and Crafts silver pedestal cup,** James Dixon and Sons, Sheffield 1906, the squat ogee bowl with three bisected tendril handles, terminating in clover leaves, on a splayed stem and foot, three C scroll and ribbon buttress supports, 16.5cm high, 10.33ozt **£300 - £500**

**198. An Arts and Crafts silver match striker ashtray,** E J Trevitt and Sons, Chester 1903, reticulated panels of embossed maidens within sinuous tendrils in the Art Nouveau style, and central ribbed sconce, 6.5cm high, 2.54ozt **£40 - £70**

**199. An American Art Nouveau silver belt buckle,** William B Kerr and Co., Newark 1901, cast with maidens heads and sinuous open knotted hair, model 1224, 11.5cm, 1.45ozt **£150 - £250**

**200. A German Jugendstil silver handle,** circa 1905, modelled in relief with an eagles head and talons grasping a central shaft with trailed ribbon, stamped marks, 18cm long **£50 - £80**

**201. A French Art Nouveau silver handled hors d'oeuvres set,** including knife, server, spoon and fork, each with pierced and engraved surfaces, the handles embossed with poppies and tendril cartouches, 19cm long (4) **£100 - £150**



202

**202. An Arts and Crafts silver belt buckle,** Horton and Allday, Birmingham 1901, cast and pierced with maidens and flowering plants in the Art Nouveau style, 8cm, 2.25ozt **£100 - £150**



203

**203. A pair of Arts and Crafts silver napkin rings,** John Gatecliff, Chester 1917, rectangular form, repousse decorated with a girl picking flowers to one side and two children exchanging a gift, 5cm x 3cm, 1.71ozt **£50 - £80**



204

**204. Kate Harris for Goldsmiths and Silversmiths Company, an Arts and Crafts silver twin handled vase, London 1901, planished, the ogee bowl with riveted bisected tendril handles, on a three branched stem, terminating in entwined prong tridents, each with leaf tips, on a domed foot, 21.5cm high, 12.94ozt**

**£800 - £1200**

**205. David Veasey for Liberty and Co., an Arts and Crafts Cymric silver buckle, Birmingham 1901, planished, open tendril and stylised leaf design, set with opal navette cabochons, 8.5cm long, 1.08ozt**

**£150 - £250**

**206. Omar Ramsden and Alwyn Carr, an Arts and Crafts silver tea caddy, London 1916, squat conical baluster form, planished and embossed with theatrical masks suspended from swags, on four ball and claw feet, the lid finial cast with a rose, 9cm high, 6.12ozt**

**£2000 - £2200**



206

**207. An Arts and Crafts silver bowl, W G Keight, Birmingham 1907, footed ogee form, repousse decorated and chased with floral motifs below an arcaded apron, 10.5cm diameter, 5.26ozt**

**£80 - £120**

**208. An Arts and Crafts silver photo frame pendant in fitted box, George Elisha Sumner, London 1901, planished oval form with strap suspension repousse embossed with a stylised flower, the arched leather box with a similarly decorated clasp and easel back support, aperture 6.5cm x 5.5cm, frame 9.1cm long**

**£200 - £300**

**209. Archibald Knox for Liberty and Co., an Arts and Crafts silver and enamelled buckle, William Hair Haseler, Birmingham 1907, pierced Celtic knot motifs with green blue enamel roundels, 4cm, 0.57ozt**

**£150 - £25**



205



207



209





210. Archibald Knox for Liberty and Co., an Arts and Crafts silver and enamelled vase, Birmingham 1902, elongated rounded trumpet form on an ogee splayed foot, embossed with Celtic knot motifs within green blue champleve enamel cartouches, 27.5cm high, 21.09ozt

£2000 - £4000



211

211. A E Jones, an Arts and Crafts silver mazer bowl, Birmingham 1928, turned wooden base with planished flared rim and interior, tooled to the shoulder fringe with geometric design, 14.5cm diameter  
£120 - £180



214

214. A E Jones, a pair of Arts and Crafts silver candlesticks, Birmingham 1925, planished conical column form, rounded dished sconces, weighted, 17cm high (2)  
£100 - £200



216

216. Keswick School of Industrial Arts, an Arts and Crafts silver spoon, Chester 1934, the planished pear shaped bowl on a tapering square section stem with notched point finial, 15cm long, 0.72ozt  
£70 - £100



212

212. A E Jones, an Arts and Crafts silver caddy spoon, Birmingham 1932, the planished circular bowl on a square section seal top stem with cast acanthus quatrefoil terminal, 6.5cm long, 0.54ozt  
£80 - £120



215

215. Keswick School of Industrial Arts, an Arts and Crafts silver long spoon, Chester 1930, the planished pear shaped bowl on an elongated tapered stem with notched terminal, 21.5cm long, 1.03ozt  
£80 - £120



217

217. A set of four German Jugendstil silver salt cellars, each of oval form with twin whiplash handles, pierced bars and relief moulded angular tendrils, on bracket feet, colourless glass liners, 10.5cm long, 2.45ozt (4)  
£80 - £120



213

213. A E Jones, a pair of Arts and Crafts silver candlesticks, Birmingham 1927, square section inverse trumpet form, stepped splayed bases, hemispherical sconces, weighted, 24.5cm high (2)  
£100 - £200

218. A Secessionist silver caddy or casket, A Lang, circa 1920, oval section, embossed with roses, the planished ogee domed lid with spherical knob finial, on four ball feet, 15cm wide, 10.57ozt  
£600 - £650



218



219. A **Secessionist silver plate**, tortoiseshell and lacquer jewel box, circa 1910, cylindrical drum form, the domed lid with central embossed Glasgow style rose within black lacquer and a border of tortoiseshell, the body relief moulded with geometric stepped fluting, the interior lined in velvet, 8.5cm diameter, 4.5cm high  
 Note: reminiscent of the designs of Charles Rennie Mackintosh, Hoffmann and Hans Christiansen, the geometric rose motif was one of the most popular symbols of the Secessionist and Glasgow School movements in Austria and Britain at the turn of the 20th century. **£80 - £120**



220

220. **Georg Jensen, a pair of Danish Skonvirke silver Ornamental Blossom sugar tongs**, designed circa 1912, sprung scissor action, import marks London 1931, 10.5cm long, 0.83ozt **£60 - £100**



221

221. **Georg Jensen, a set of six Danish Skonvirke silver Lily of the Valley teaspoons**, designed 1913, import marks London 1938, 10.5cm long, 2.24ozt (6) **£80 - £120**

222. **Johan Rohde for Georg Jensen, a pair of Danish Skonvirke silver Konge (Acorn) serving spoons**, designed 1915, Copenhagen 1925, planished egg shaped bowls, 22.5cm long, 5.63ozt (2) **£100 - £200**



223

223. **Georg Jensen, a Danish Skonvirke silver spoon**, model 39, Copenhagen 1924, modelled with an owl on melon finial, set with green cabochon eyes, the twisted tendril stem terminating in a flower head and planished bowl, London import marks, 20cm long, 2.52ozt **£150 - £250**



224

224. **Georg Jensen, a Danish Skonvirke silver spoon**, model 21, designed 1912, Ornamental Blossom design, planished bowl with budding tendril and leaf, 16.5cm long, 1.87ozt **£100 - £150**



225

225. **Alexander Ritchie (attributed), a set of six Arts and Crafts Iona silver teaspoons**, Shipton and Co., Chester 1936, spade form bowls on Celtic knot and strand stems, the terminals of three alternating designs including galleon, encircled galleon and Celtic Cross, 10cm long, 1.99ozt (6) **£200 - £300**

226. **An Art Deco silver caster**, Ernest W Haywood, Birmingham 1934, baluster form, horizontally ribbed to the lower section, geometric pierced lid, 15.5cm high, 2.74ozt **£30 - £50**

227. **R E Stone, an Art Deco silver spoon and fork Christening set**, London 1935 and 1939, the terminals cast with James, in relief, in fitted case, 15.5cm long, 1.87ozt **£70 - £100**

228. **A matched harlequin set of Art Deco silver and enamelled coffee spoons**, Ernest Haywood, Birmingham 1935/36 and Mappin and Webb, Birmingham 1939, each with pitched guilloche enamel terminals in different colours, 9.5cm long, 1.60ozt (6) **£30 - £50**

229. **A pair of Art Deco novelty white metal knife rests**, in the form of elongated dogs, stylised ears and tails, 9cm long (2) **£20 - £30**



230

230. **Ferdinand Wilm for H J Wilm, a pair of Art Deco German silver candelabra**, circa 1935, planished, the cylindrical column stems supporting four square section bowed arms, each with disc terminals and dished conical sconces, 20cm high, 28cm diameter, 45.52ozt **£400 - £600**

231. **Georg Nilsson for Gerofabriek, a Dutch Modernist silver plated bowl and jug**, circa 1950, flared triangular form on cylindrical feet, stamped marks Gero, jug 10.5cm long (2)

Note: Danish designer Georg Nilsson (1888-1975) studied with Georg Jensen in Copenhagen, before becoming chief designer at the Gero factory after 1925, first in Denmark and then in Zeist, Holland, where this design was produced.

**£30 - £50**



232



233



234

**232. Stuart Devlin, a Modernist silver and parcel gilt dinner knife and fork**, London 1968, the tapered irregular faceted and gilded handles, with plain four tined bowl and steel blade, 24.5cm long (2) **£250 - £300**

**233. Christopher Lawrence, a matched pair of Modernist silver salt and pepper pots**, C J Vander, London 1973 and 1977, triangular section conical form, textured effect, 10cm high, 4.79ozt (2) **£200 - £300**

**234. Christopher Lawrence, a Modernist silver gilt and glass novelty vase of flowers**, London 1997, the spherical vessel with two flowering stems, realistically modelled as snow drops, 16cm high, silver weight 0.81ozt **£40 - £70**



235

**235. Stuart Devlin, a novelty silver gilt surprise egg**, London 1972, textured finish with plain central band, the interior with frog on lily pad with flower and central purple fluorite crystal, number 54, 7.5cm high, 3.49ozt **£150 - £250**

**236. A Modernist silver and birch wine coaster**, Carrs of Sheffield, Sheffield 2000, plain drum form with tapered base, 13cm diameter **£40 - £70**



237

**237. Cal Howard for Garrard and Co., a parcel gilt silver and mother of pearl figural tazza**, London 1979, the stem realistically cast as a seahorse, on a stepped circular base, supporting a natural clam shell with pearl mounted in reticulated seaweed border, 12.5cm high **£400 - £500**

**238. A Modernist silver and glass claret jug**, Asprey and Garrard, London 2000, the plain teardrop body with tubular looped handle and lipped collar, 16cm high **£200 - £250**

**239. Georg Jensen, a Danish Modernist silver gilt and enamelled year spoon**, 1972, the terminal with champeve cornflower motif, in blue enamel, 15cm long, 1.45ozt **£40 - £60**

**240. Hermes, a silver plated and leather tray**, rectangular form with stitched strap handles, together with a contemporary leather handled jug, 23.5cm x 31cm (2) **£300 - £400**



## JEWELLERY AND WATCHES

241. A late 19th century gold banded agate brooch, 4.6cm, 8.5g £30 - £50

242. A selection of gold diamond jewellery, to include an 18ct gold ring, a 15ct gold ring and a 9ct gold brooch, AF, total weight 6.6g £80 - £120

243. Three coral necklaces, 48, 45, and 40cm, total weight 54g £20 - £40

244. A selection of silver and gem-set jewellery, to include a late 19th century enamel pocket watch, a pair of early 20th century cufflinks and further items, total weight 121.3g £50 - £100

245. A mid 20th century calibre-cut ruby and flat-cut diamond dress ring, with slightly tapered band, Italian marks, ring size P, 4.5g £120 - £180



246

246. An Indian gold, pink tourmaline cabochon and polychrome enamel pendant, of quatrefoil outline, with lotus flower and feather edged enamel surround, the reverse repousse decorated with flowers, 4cm long, 7.9g £500 - £600



247

247. A gold, garnet and split pearl pendant, the open quatrefoil body of interlocking crescents around an eight pointed star, three swagged chains below, suspended on a cruciform loop, 8cm, 24.2g £800 - £1000

248. Three necklaces and a bracelet, one suspending a gold cross, one chain with hallmarks for 9ct gold, one chain with foreign marks, pendant with foreign marks, two unmarked, total weight 10.5g £50 - £100

249. A mid Victorian mourning brooch and an early 20th century mourning locket, suspended from a 9ct gold chain, chain stamped 9c, length of chain 40cm, length of locket 4cm, length of brooch 4.3cm, total weight 31.9g £50 - £100

250. Four gem-set rings, to include a Russian 14ct gold pink gem ring, two 9ct gold and silver full eternity rings and a gem-set ring, one with Russian marks, total weight 11.8g £50 - £100

251. A selection of Victorian and later silver jewellery, to include two lockets, three brooches and a coin holder, five with hallmarks for silver, total weight 97.1g £40 - £60



252

252. A late 19th century 9ct gold seed pearl and red gem brooch, beaded foliate cartouche form, with circular open star and branch, 4.5cm long, 2.3g £30 - £50



253

253. A Scottish silver and hardstone brooch, of oval-shape outline, set with a diaper tiled agate and bloodstone, within a chased surround, 6cm long, total weight 24.7g £30 - £50



254

254. A George III gilt metal mourning pendant locket, of oval-shape outline, glazed to both sides, containing in miniature painting an allegorical female figure with shield inscribed Peace, 4.5cm long £50 - £80

255. A pair of gold medallion earrings, modelled after a sovereign design, dated 1922, suspended from looped hook fittings, 1.6cm diameter, 5g £100 - £150



256

256. A gold multi-gem ring, rope-twist and open wire setting, gemstones to include garnet and citrine, size R, 3.7g £50 - £100

257. A late Victorian 18ct gold, sapphire and rose-cut diamond ring, five alternating graduated gemstones, hallmarks for Birmingham 1876, ring size O, 2.9g £60 - £100

258. A late Victorian 15ct gold old-cut diamond scarf clip, oval ring form with pin, in fitted leather case, 3cm, 2.7g £40 - £70



268



270

259. An early 20th century gold, turquoise cabochon and split pearl floral cluster ring, ring size Q, 3g £40 - £60

262. An early 20th century 9ct gold curb-link bracelet, with heart-shape padlock clasp, 19cm long, 9.4g £100 - £150

263. A Victorian yellow metal agate cabochon bracelet, designed as a series of six graduated oval-shape panels, with partially concealed push-piece clasp, 16.5cm long £80 - £120

264. An 18ct gold diamond single-stone ring, together with two 9ct gold signet rings, total weight 14.8g £100 - £200

265. A 1930s 22ct gold wedding band ring, hallmarks for Birmingham 1934, ring size L, 1.6g £40 - £70

266. A selection of gold jewellery, to include three 9ct gold rings and further items, total weight 12g £100 - £150



260

260. A mid Victorian gold, onyx cameo forget-me-not and split pearl memorial brooch, with glazed reverse, engraved In Memory of The Rev. Oliver Lodge, Elsworth Rectory June 15th 1845, 3.6cm, total weight 13.1g £80 - £120



261

261. A 19th century gold and enamel brooch, the rectangular plaque painted to depict an Alpine landscape, with open foliate pediments to the frame, 5 by 5.5cm, total weight 14.1g £200 - £250

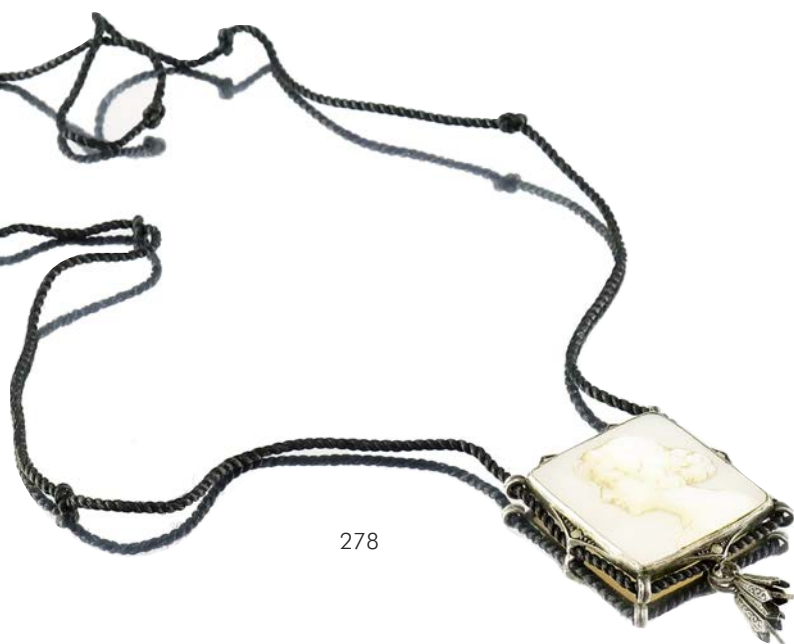


267

267. A George III gold and enamel mourning ring, dated 1793, the central roundel of woven hair with monogram, within a cloisonné border white hearts on black ground, inscribed to the back Mary Morpott, size O, 5.6g £80 - £120

268. A 9ct gold, amethyst and seed pearl novelty brooch, designed as a bee, with ruby eyes, London 1979, 2.6cm wide, 3.7g £80 - £120





278



271

269. An early 20th century 9ct gold aquamarine, pink tourmaline and split pearl insect bar brooch, designed as a bee, 5cm, 2.9g £80 - £120

270. An Austrian silver gilt, garnet and split pearl novelty insect brooch, designed as a mayfly, the body with five graduated stones, the sprung wings with double pin clasp, 3cm wide, 3.4g £70 - £100



274

271. An American Revivalist gold, enamel and gem-set pendant, circa 1880, the circular rosette set with vari-shape amethysts, pearls, green and red enamel highlights, within a denticulated border, seven pear-shape amethyst and split pearl drops below, suspended from a further amethyst and pearl surmount, 6.5cm, 15g £700 - £1000

272. David Andersen, a Norwegian Secessionist silver gem-set cabochon bracelet, of openwork design, Norwegian marks, 18.5cm, 22g £40 - £60

273. Two 19th century silver filigree brooches and an enamel bracelet, total weight 35.5g £20 - £40

274. An Arts and Crafts silver and enamel brooch, circa 1905, in the form of a stylised swallow tail butterfly, pierced detail and champléve enamel in blue and green, two drops forming the wing tails, stamped sterling, 3.6cm, 6.2g £100 - £150

275. An Arts and Crafts 9ct gold aquamarine pendant, circa 1905, open whiplash tendril cartouche design, suspended from a 9ct gold trace-link chain, length of pendant 4.5cm, length of chain 43cm, 2.5g £70 - £100



276

276. Charles Horner, an Art Nouveau 9ct gold amethyst brooch, of openwork scrolling design, hallmarks for Chester 1908, 3.2cm, 3.2g £80 - £120



277

277. Archibald Knox (attributed) for Liberty and Co., an Arts and Crafts silver and enamel pendant, William Hair Haseler, hallmarks for Birmingham 1908, interlocking quatrefoil outline, with blue green enamel, 4cm, 4.7g £100 - £200

278. An Art Nouveau silver, mother-of-pearl and marcasite necklace, the square plaque with the bust of a maiden in profile, within a silver mount, on a knotted silk cord, length of pendant 5cm, length of cord 64cm £50 - £80

279. A Jugendstil gold, seed pearl and garnet pendant, the central stone within a circular reticulated geometric web, set with seed pearls and a further drop below, on chain, 4.5cm long, chain 43cm long, 4.2g £60 - £100



280

280. An American Art Nouveau style 14ct gold plique-a-jour enamel, diamond and pearl pendant, cast in relief as a stylised poppy, on a chain, 3cm, the chain 41.5cm long, 4.5g **£80 - £120**

281. An Art Nouveau silver pendant, depicting a maiden and open foliate tendrils, 3.3cm diameter, 6.3g **£30 - £50**



282

282. A Jugendstil silver gilt plique-a-jour enamelled pendant, in the Levinger style, three blue enamel floral trefoil sprays between split pearl bands, above a mother-of-pearl plaque, on a green ground, suspended from a double chain, hangs 6.5cm long, 4.5g **£100 - £150**



283

283. An Art Nouveau gold seed pearl pendant, on chain, the naturalistic budding stem with green gold leaves, within a circular frame, stamped marks, 2.4cm long, the chain 46cm long, 4.4g **£60 - £100**

284. An Arts and Crafts silver, enamel and baroque pearl necklace, four planished triangular plaques with blue enamel, four pearls suspended from each, linked by twisted wire chains and swags, 39.5cm long, 10.7g **£100 - £150**



284

285. After Archibald Knox, an Arts and Crafts style silver and onyx pendant, Kit Heath, 1993, shield form with open Celtic knot design after the original known design for Liberty and Co., 4.5cm long, 4g **£30 - £50**

286. An Arts and Crafts 9ct gold and turquoise brooch, open knotted tendril design, around a central oval-shape cabochon, 3cm, 3.5g **£80 - £120**

287. An Arts and Crafts silver Ruskin cabochon brooch, the circular green plaque within a plain surround, impressed mark, 3.5cm diameter **£20 - £40**





288

288. An Arts and Crafts silver and enamel pendant, the rectangular purple foil enamel plaque, within a beaded frame, suspended from a scrolling tendril and leaf bracket surmount, 4.5cm, 9g £60 - £100



291

291. Mary Thew (attributed), an Arts and Crafts Glasgow School gold garnet ring, in the Iona style, the oval-shape gemstone flanked by applied Celtic knot wire with beads, approximate ring size L, 6.4g £100 - £200



294

294. Bernard Instone (attributed), an Arts and Crafts silver and agate brooch, circa 1920, the circular plaque within a rope twist and coiled wire tendril and leaf wreath, bordered with scrolling heart shaped arcading, diameter 4.5cm, 11g £40 - £60



289

289. An Arts and Crafts silver turquoise ring, designed as a turquoise cabochon, within an open wire quatrefoil rosette, with disc and bead highlights, ring size J, 2.1g £20 - £40



292

292. An Arts and Crafts silver and green hardstone cabochon brooch, within open wire and rope-twist knotted and looped foliate surround, stamped silver, 4.5cm, 11g £40 - £70



295

295. Bernard Instone, an Arts and Crafts silver and enamel brooch, the open floral and foliate head in cream and green enamel, on a bar pin, 7cm, 6.1g £30 - £50



290

290. Phoebe Anna Traquair (attributed), an Arts and Crafts silver and enamel pendant, lozenge form, decorated with Venus and attendants in a forest glade, painted and layered iridescent enamel, within a rope border, 5.5cm long, 9.7g £200 - £300



293

293. Rhoda Wagner (attributed), an Arts and Crafts silver mother-of-pearl brooch, the oval-shape mother-of-pearl, within an open foliate wire and floral surround, 5cm, 9g £40 - £70



297

297. A silver and enamelled brooch, J Aitkin and Son, Birmingham 1914, circular with ogee border and looped wire, turquoise guilloche and basse taille enamel with pink and green painted floral wreath to the centre, 3.5cm diameter, 7.0g £30 - £50



302



305

298. Theodor Fahrner, an Art Deco silver and marcasite brooch, bowed rectangular form, pierced and reticulated loop and stylised leaf design, 5cm long, 13.5g £70 - £100

299. Theodor Fahrner, two Art Deco silver and marcasite brooches, each of folded and textured designs, 5.5cm long, 28.5g (2) £80 - £120



300

300. Theodor Fahrner, an Art Deco silver gilt smoky quartz brooch, of rectangular outline, the central circular-shape smoky quartz, within a reeded chevron and applied rope-twist surround, with rectangular-shape smoky quartz terminals, 6cm, 19.9g £80 - £120

301. Theodor Fahrner, two Art Deco silver and marcasite brooches, bow and buckle forms, 6.5cm long, 23.7g (2) £50 - £80

302. Theodor Fahrner, an Art Deco silver and marcasite necklace, the five textured and studded stylised moth form links, suspended from a linked lozenge chain, 44cm, 22.3g £100 - £200



303

303. Theodor Fahrner, an Art Deco silver, marcasite and synthetic sapphire brooch, three navette cabochon gemstones, within a double strand knotted ribbon frame, 6cm, 12.1g £80 - £120



304

304. Theodor Fahrner, an Art Deco silver, marcasite and carnelian geometric brooch, the rectangular carnelian cabochons, within channel-set, interlocking right angled tubular bars, 6cm, 15.4g £80 - £120

305. Bernard Meldahl, an Art Deco Norwegian silver gilt and enamel necklace, the geometric pendant with circular guilloche enamel fan segment and rosette, above stepped bars, in red, black and yellow, suspended on a triangular section with two rods on a belcher-link chain, 42.5cm long, 7.2g £70 - £100

306. An Art Deco Scandinavian silver citrine, marcasite and black enamel brooch, of oval outline, the rectangular-shape citrine, within an open reticulated surround of leafy branches in four black enamel bordered sections, 4cm, 11.9g £30 - £50



307

307. An Art Deco silver marcasite and coral brooch, designed as a square-shape hardstone cabochon, flanked by foliate fronds, with black enamel bars and three oval pellet drops, 6cm, 6.9g £30 - £50

308. Two French Art Deco silver and marcasite brooches, one set with hematite, the other convertible into a pair of lapel clips, French assay marks, 6.5 and 5.1cm long, 33.9g (2) £30 - £50

309. An Iona style Arts and Crafts silver brooch, Celtic zoomorphic form, lions head and coiled serpents tail, stamped sterling, 6cm long, 7.1g £30 - £50





310

310. Alexander Ritchie (attributed), an Arts and Crafts silver brooch, import marks for Dublin 1939, in the lona style, a central galleon flanked by open Celtic knots and bar, 6.5cm long, 5.1g  
£30 - £50

311. Georg Jensen, a pair of Danish silver earrings, model 38, designed circa 1930, circular wire wreath with beads and square panels, around a central cabochon, screw-back fittings, 1.3cm diameter, 4.8g  
£80 - £120



312

312. Gundorph Albertus for Georg Jensen, a pair of Art Deco Danish silver Cactus earrings, model 110, designed circa 1930, screw-back fittings, 1.9cm, 7.7g  
£80 - £120



313

313. Harald Nielsen for Georg Jensen, a pair of Danish silver earrings, model 86, designed circa 1936, circular cabochon form, screw-back fittings, signed Georg Jensen, diameter 1.5cm, 9.6g  
£50 - £80

314. Harald Nielsen for Georg Jensen, a Danish silver ring, model 46 B, designed circa 1936, oval cabochon form on a stepped mount, ring size M, 6.7g  
£50 - £80



315

315. Harald Nielsen for Georg Jensen, a Danish silver and tiger's-eye ring, model 46 A, designed circa 1936, oval cabochon stone on a stepped mount, approx size K, 2.2cm, 10.9g  
£60 - £100



316

316. Arno Malinowski for Georg Jensen, an Art Deco Danish silver brooch, model 318, designed circa 1934, square-shape outline, with resting deer and squirrel on a foliate wreath, import marks for London, 4cm, 22.4g  
£100 - £200



317

317. Arno Malinowski for Georg Jensen, an Art Deco Danish silver brooch, model 312, designed circa 1935, heart form with two dolphins and shell, behind a foliate branch, 4.5cm, 13.4g  
£100 - £200



318

318. Arno Malinowski for Georg Jensen, an Art Deco Danish silver brooch, model 239, designed circa 1935, heart form with a bird, wings spread amongst branches, import marks for London, 4.5cm, 15g £100 - £200



319

319. Arno Malinowski for Georg Jensen, an Art Deco Danish silver brooch, model 256, designed circa 1934, oval form with kneeling deer motif, import marks for London 1956, 4.5cm, 16.3g £100 - £200



320

320. Henning Koppel for George Jensen, a Modernist Danish silver brooch, model 473, circa 1960s, domed triangular form with stylised leaf motif, 6cm, 22.6g £80 - £120



321

321. Bjorn Sigurd Ostern for David Andersen, a Norwegian Modernist silver and green cabochon pendant, stylised Viking ship open ring sail, 5cm long, 22.3g £80 - £120



322

322. Bjorn Sigurd Ostern (attributed) for David Andersen, a Norwegian Modernist silver pendant, stylised Viking ship or trident form, with dragons head terminals, stamped marks, 7cm, 17.5g £50 - £80



323

323. Henning Koppel for Georg Jensen, a Danish Modernist silver splash brooch, model 321, open irregular star form, import marks for London, 4.5cm, 17.2g £80 - £120



324

324. A mid 20th century Modernist silver amethyst and citrine brooch, circa 1960s, designed as conjoined comma motifs, 6cm, 17g £80 - £120

325. Uno, a 9ct gold bracelet watch, hallmarks for Birmingham, total weight 15.5g £80 - £120

326. Linit, a ladies 9 carat gold wrist watch, engine turned silvered dial with Arabic numerals, on plated strap, in original case, 2.5cm diameter £40 - £70

327. Goldsmiths and Silversmiths Company, a silver pocket watch, champagne dial with Arabic numerals and subsidiary seconds, blued steel hands, 4.8cm diameter, total weight 52.1g £30 - £50

328. Ovida Watch Company, an Art Deco 14ct gold wrist watch, case numbered 101299, 20cm £100 - £200

329. Two 9ct gold watches, one with 9ct gold bracelet, bracelet with hallmarks for London, total weight 30g £150 - £250

330. Gucci, a novelty Gucci ball point pen, in the form of a dachshund, bi-metal, mounted on a leather plinth, maker's logo and marks, width 19cm £50 - £80

331. An Edwardian 9 carat gold pen and pencil set, the fountain pen and propelling pencil of elongated conical form with ball terminals, in fitted case, 18.5cm long, 8.9g (2) £120 - £180



## PICTURES



340

**332. Ian Weekley (1932-2005),** Last Boats In, lithograph, signed and titled, dated 1959, 48cm x 63cm, framed **£20 - £40**

**333. After Michael Angelo Hayes,** Charge of the 16th Lancers at The Battle of Aliwal, 1846, sepia print, 24 by 48cm, mounted **£200 - £300**

**334. Frank Brangwyn (1867-1956),** The Retreat from Antwerp, lithograph, signed in pencil, 75cm x 72cm, framed **£200 - £400**

**335. John Brunston (1933-2014),** Durdle Door, aquatint, signed and titled, trial print, 46cm x 61cm, framed **£70 - £100**

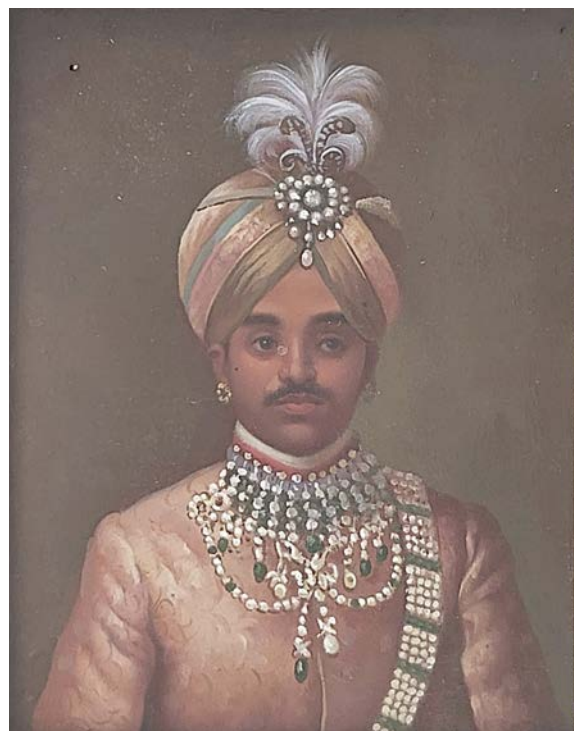
**336. Chinese or Japanese School,** 18th/19th Century, study of a falcon in profile, monochrome watercolour, 36 by 25cm, framed **£200 - £300**

**337. Chinese or Japanese School,** 18th/19th Century, study of a falcon in profile, monochrome watercolour, 36 by 25cm, framed **£200 - £300**

**338. Indian School,** late 19th Century, portrait of an Indian Maharaja, bust length wearing a jewelled turban and tunic, oil on board, 25 by 19cm, gilt frame **£800 - £1200**

**339. English School (19th century),** Trent, Venice and Amalfi, three Grand Tour studies, watercolour, largest 20cm x 28cm, framed (3) **£300 - £500**

**340. Jules Van Imschoot (Flemish, 1821-1884),** battle scene of the Indian mutiny of 1857, possibly depicting Indian patriot Nana Sahib on horseback, signed l.r., oil on canvas, 45 by 53cm, gilt frame **£3000 - £5000**



338

**341. Chinese School, 20th Century**, the harbour at Canton or Hong Kong, oil on canvas, 40 by 60cm, gilt frame **£300 - £500**



342

**342. Attributed to Janus La Cour (Danish, 1837-1909)**, a coastal scene with rockpools, initialled and dated 1873 l.r., oil on canvas, 36 by 60cm, gilt frame **£200 - £300**



343

**343. Abraham Hulk Jnr (British, 1851-1922)**, coastal scene with fishing boats at dusk, signed l.r., oil on panel, 18 by 29cm, gilt frame **£400 - £600**

**344. John Charles Maggs (1819-1895)** Passing Coaches, oil on canvas, indistinctly signed, 26cm x 44cm, framed **£300 - £500**

**345. English School (19th century)**, Three Country Landscapes scenes, three oils on board, all monogrammed HTB, 11cm x 15cm, framed (3) **£80 - £120**

**346. Walter Field (British, 1837-1901)**, infants resting beside a stream, signed and dated 1866 l.r., oil on canvas, 20 by 30cm, gilt frame **£300 - £500**



347

**347. Harold Swanwick (British, 1866-1929)**, The End of the Day, signed and dated 1898 l.l., oil on board, 18 by 25cm, gilt frame **£200 - £300**

**348. Charles Archer (British, 1855-1931)**, still life of plums and grapes on a mossy bank, signed l.r., oil on canvas, 20 by 23cm, gilt frame **£150 - £200**

**349. † Thomas Pradzynski (Polish, 1951-2007)**, 'Confiserie', oil on canvas, signed, framed. 18cm x 14cm **£400 - £800**

**350. † Thomas Pradzynski (Polish, 1951-2007)**, 'Chez Pepe', oil on canvas, signed, framed. 23cm x 16cm **£400 - £800**

**351. † Thomas Pradzynski (Polish, 1951-2007)**, 'Cafe Hotel', oil on canvas, signed, framed. 41cm x 30cm **£500 - £1200**

**352. † Thomas Pradzynski (Polish, 1951-2007)**, 'Restaurant', oil on canvas, signed, framed. 39cm x 32cm **£400 - £1000**

**353. † Thomas Pradzynski (Polish, 1951-2007)**, 'Depot Nicolas', oil on canvas, signed, framed. 39cm x 32cm **£800 - £1000**



354

**354. Duncan MacGregor (b.1961)**, Boat Building, acrylic on board, signed, 60cm x 90cm, framed **£1000 - £1500**



## FURNITURE AND CLOCKS



356



366



367



368

**355. A George IV mahogany pole screen**, on tricorn base with diamond form glazed frame containing a woolwork picture of children with a dog, 132.5cm high  
£40 - £60

**356. A Black Forest carved musical hall chair**, 19th century Swiss, the cartouche back carved and pierced in relief with naturalistic branches and leaves, the central oval inlaid with a pastoral scene with figure and dogs, the seat similarly decorated, serpentine fronted seat with sprung mechanism for the musical box within, activating when compressed, floral carved cariole legs, 94cm high  
£300 - £500

**357. A George I style walnut cocktail cabinet**, of small proportions, circa 1950s, in the form of a cabinet on stand, single cupboard door with single shelf interior, on a three drawer kneehole side table stand, on shell carved and scroll footed cabriole legs, barrel frieze pediment, 60cm wide, 138cm high, 38cm deep  
£200 - £400

**358. A 19th century carved elm folding library step ladder**, the uprights carved as bamboo, united by cast iron hinges, 185cm long  
£800 - £1200

**359. A 19th Century flame mahogany linen press**, plain cornice, twin panelled doors opening to hanging and shelf space, the plinth with a single long frieze drawer with turned pulls, peg feet, height 143cm, width 131cm, depth 54cm  
£250 - £350

**360. An early Victorian flame mahogany pier cabinet**, circa 1840, raised set back shelf with arched pediment, double frieze drawers over twin panelled cupboards opening to an internal deep drawer and slides, plinth, height 134cm, width 103cm, depth 50cm  
£200 - £300

**361. A George III mahogany cellarette**, sarcophagus chest caddy from on integrated stand, the chamfered lid hinged and opening to reveal an eight section interior, on four square section tapered legs with brass casters, 61.5cm wide, 61cm high, 33.5cm deep  
£80 - £120

**362. Three George III mahogany hall chairs**, circa 1795, each with a carved shield back and central oval cartouche, on opposing sabre front and back legs, 89cm high, 45.5cm high to seat (3)  
£100 - £150

**363. A Louis XV style three piece carved wood and upholstered salon suite**, including double seater sofa and two open armchairs, white painted and gilded, the oval backs with upholstery and overstuffed seats, on fluted column legs with acanthus carved motifs (3)  
£150 - £250

**364. A pair of Louis XVI design walnut framed fauteuil**, early 20th Century, curved backs, stuffed over armrests, serpentine seats, green rayon upholstery (2)  
£80 - £120

**365. An Aesthetic Movement walnut gentleman's dressing stand**, the swing mirror on turned column supports, over a single drawer, open shelf below with double door cupboard and further shelf to the base, 46.5m wide, 152cm high, 34cm deep  
£50 - £80

**366. An Aesthetic Movement four tier stand**, in the style of E W Godwin, bamboo turned splayed legs and dowels, Japanese paddle fan shelves, 102cm high  
£80 - £120

**367. An Aesthetic Movement carved oak occasional table**, circa 1880, the square top decorated in relief with a zoomorphic foliate dragon scroll roundel, within four acanthus corners, the four turned baluster legs united by a low shelf with similar grotesque carving, 32cm square, 78.5cm high  
£40 - £70

**368. E W Godwin (attributed), an Aesthetic Movement Anglo Japanese mahogany chair**, circa 1880, five horizontal back stretchers, gridded into two levels of four sections, over bisected and vacant tiers, all with incised channel borders and ring motifs, on turned, incised and knopped front legs united by a single stretcher, supporting an overstuffed seat, 47cm high to seat, 83.5cm high overall  
£80 - £120



369

**369.** An Aesthetic Movement walnut and rush seated chair, in the style of E W Godwin, circa 1875, the angled lyre back with five vertical spindles, incised channel borders, on tapered and knopped turned front legs, united by double shaped and incised dowel stretchers, seat 44cm high, overall 81.5cm high **£40 - £70**

**370.** Liberty and Co. after Philip Webb for Morris and Co., an ebonised Sussex chair, circa 1880s, the turned, incised and steam bent supports with four lozenge form ribbed and turned bobbin spindles, above a double bar back stretcher, the tapered front legs with mushroom feet united by a concave double dowel front stretcher, rush seat, seat 44cm high, 87cm high overall

Note: a slightly altered design which appears in the Liberty and Co. catalogues of the late 19th century, the chair retains the original distinctive spindle design used on the Morris examples. **£80 - £120**

**371.** An Arts and Crafts oak boarded chair, fret carved and pegged plank sides with pierced heart motifs, united by pegged stretcher, the board back carved with a scroll in low relief, 60cm wide, 76.5cm high, 36cm deep **£60 - £80**

**372.** After Charles Rennie Mackintosh, an Arts and Crafts Glasgow style high back chair, designed for the Ingram Street tearooms circa 1900, oak with drop in seat, circa 1930s, seat 44cm high, 150cm high overall **£100 - £200**

**373.** J G Cracknell, an Art Deco oak Homettes stick stand, circa 1930, arched and bowed board construction with circular tray, 66cm high, 30.5cm wide, 21cm deep **£60 - £80**



370



373

**374.** An Art Deco peach glass occasional table, square pedestal form with bevelled mirror panels, 51cm square, 54cm high **£100 - £200**

**375.** Lucian Ercolani for Ercol, a Windsor golden elm and ash three tier drinks trolley or serving table, model 458, designed circa 1960, cushioned rectangular and galleried shelves on shaped supports and spherical casters, original label, 78cm high, 72cm wide, 47cm deep **£80 - £120**

**376.** A French Charles X ormolu and flame mahogany portico clock, Empire style, signed Guyerdet, the 6 inch silvered dial engine turned and enamelled with Roman numerals, with cast acanthus border suspended within a four column arcade, supporting a gridiron and foliate rosette pendulum, 50cm high **£400 - £600**

**377.** A Victorian Gothic Revival oak bracket clock, the case modelled with crenelated turrets and lancet arched door, the brass dial engraved with a church and bridge, supported in a chamfered bracket, **£700 - £1000**



378



375

**378.** An Arts and Crafts silver plated and enamelled mantle clock, domed and waisted form, embossed with Father Time resting over a 2 inch turquoise enamel and braille embossed dial, Art Nouveau style tendrils and motto So runs the round of life from hour to hour, above three rosettes, 18.5cm high **£200 - £300**

**379.** Liberty and Co., an Arts and Crafts Tudric pewter and enamelled mantle clock, model 01126, the 3.5 inch blue green enamel and copper dial with Roman numerals, within a planished curved pediment case, on squat bun feet, 32cm wide, 18cm high, 9.5cm deep **£900 - £1100**

**380.** Liberty and Co., an Arts and Crafts Tudric pewter mantle clock, model 01126B, the 3.5 inch white enamel dial with Arabic numerals, within a planished curved pediment case, flanked by recessed barley twist oak columns, on squat bun feet, 32cm wide, 18cm high, 9.5cm deep **£700 - £900**

**381.** An Art Deco marble, chrome and bronzed figural clock, the central diamond form dial within a bevelled glass case, flanked by colonnades with gilt mounted column capitals, surmounted by a figure of a flapper with dog, 68cm high, 38cm wide **£300 - £500**



379



DAY TWO



## ORIENTAL

**382. A Japanese monochrome vase,** bulbous bottle form, white hare's fur glaze, impressed marks, 24cm high £50 - £100



383

**383. A Chinese famille rose vase,** baluster form with lions mask and ring handles, celadon ground, painted with birds, flowers and insects, highlighted in gilt, 25cm high £50 - £80



384 and 385

**384. A Chinese blue and white snuff bottle,** Qianlong mark, shouldered cylindrical form, painted in the round with a dragon and pearl, 7cm high £80 - £120

**385. A Chinese blue and white snuff bottle,** Kangxi mark, shouldered conical form, painted with figures in a mountain landscape, 8.5cm high £50 - £100

**386. A Japanese art pottery pot and cover,** circa 1920s, cylindrical ovoid form, craquelure glazed and painted with cranes, 23cm high £30 - £50



387



388

**387. A pair of Chinese low jardinières,** late 19th or early 20th Century, of tapered cylinder form, painted in coloured enamels with dragons chasing a flaming pearl on a yellow ground, height 15.5cm (2) £400 - £600

**388. A Japanese satsuma ware baluster vase,** early 20th Century, extensively decorated in raised gilt and coloured enamels with a panel of recreational figures to one side, and a mount Fuji landscape with a figure crossing a bridge to the other, satsuma marks and three character script mark on a black ground, height 32cm £700 - £900



**389. A Japanese satsuma ware koro and cover**, early 20th Century, the domed pierced cover with a beast finial, reticulated fan shaped twin handles, the body decorated in coloured enamels with a bird over a blossom tree, raised tripod base, gilt script marks, height 28cm **£400 - £600**

**390. A garniture of three Chinese blue and white vases**, late 19th or early 20th Century, comprising pair of miniature temple vases and covers and a sleeve vase, each decorated with figure scenes, blue four character script marks, height of largest 13cm (3) **£150 - £180**

**391. A Chinese high fired monochrome baluster vase**, 19th Century, zoomorphic twin handles, incised mark, height 24cm, together with a Chinese blue and white square section baluster vase, height 26cm (both s.d/restorations) (2) **£220 - £250**

**392. A Chinese ginger jar**, late 19th Century, decorated in coloured enamels with maidens in an interior and a horse and figures beside a balustrade outside, on a black ground, height 23cm **£200 - £300**

**393. A Chinese blue and white ginger jar**, Kangxi, decorated with cartouche panels containing domestic objects, prunus blossom and crackle effect ground, double blue circle mark, height 19cm **£300 - £500**



394

**394. A Chinese jardiniere**, 19th Century, of hexagonal form, decorated in the famille rose palette with a peacock in a garden, height 19cm **£300 - £400**

**395. A Chinese moon flask**, 19th Century, decorated in Cantonese enamels in the famille rose palette with exotic birds and insects amongst foliage, gilt zoomorphic twin handles, height 31cm **£200 - £300**

**396. A large Chinese baluster vase**, 19th Century, zoomorphic twin handles, decorated in coloured and raised enamels in the famille verte palette of battle scenes with figures on horseback, height 60cm **£700 - £1000**



397

**397. A pair of Chinese porcelain baluster vases**, 20th Century with Qianlong seal marks, extended openings, the friezes painted in the famille rose palette each with a maiden offering refreshments to a bearded elder holding a staff, script verso, seal marks in puce, height 24cm (2) **£500 - £700**



398

**398. A Chinese porcelain wall pocket**, 18th Century, of two dimensional of baluster form, painted in the famille rose palette with sprays of foliage, height 25cm, Condition: restorations **£250 - £350**

- 399. A Chinese porcelain footed bowl**, Tongzhi seal mark, of quatrefoil form, celadon inner glaze, gilt edge, the frieze with a Greek key border and fruit in iron red, puce seal mark on a celadon ground, height 8cm, width 21cm **£200 - £300**
- 400. A Chinese blue and white circular charger**, Kangxi, 1662-1722, decorated in the Arita manner with graduated borders of ogee topped panels of foliage, underglaze blue Artemisia leaf within a double blue circle, diameter 38cm **£500 - £600**
- 401. A Chinese bronzed and crackle glazed fish bowl**, early 20th Century, the frieze painted in blue with a continuous frieze of exotic birds amongst foliage, height 30cm, diameter 37cm **£700 - £900**
- 402. A pair of Chinese bronzed and crackle glazed temple vases and covers**, early 20th Century, beast finials, each painted coloured enamels with figures on horseback and battle scenes, impressed seal marks, height 42cm (2) **£300 - £500**
- 403. A pair of Chinese baluster vases**, 19th Century, four gilt beast mask and ring handles, painted in relief enamels with dragons chasing a flaming pearl amongst foliage on a deep blue reserve ground, height 35cm (2) **£300 - £500**
- 404. A Chinese baluster vase**, 20th Century, with five boys climbing, famille rose foliage on a turquoise scroll ground, three character seal mark and 'Suniba', height 21cm **£200 - £300**
- 405. A Japanese Arita circular plate**, 17th Century, decorated with a central vase of foliage within a multi-panel alternating border of foliage, single blue circle mark to base, diameter 34cm **£300 - £500**
- 406. A Japanese Kutani charger**, painted with a bird in prunus with chrysanthemums, within a panelled border of alternating floral specimens and rosettes, 36.5cm diameter **£30 - £60**
- 407. A Chinese circular porcelain dish**, 19th Century, painted in polychrome with seventeen boys at play, remnants of an old collection label CarloXXXX, diameter 23cm **£150 - £250**



412

- 408. A pair of Cantonese enamel baluster vases**, 19th Century, gilt zoomorphic twin handles, polychrome decoration of floral fans on an iron red ground, height 26cm (2) **£150 - £180**
- 409. A Chinese celadon glaze circular plate**, Qianlong seal mark and of the period, sgraffito decoration of a radiating central flower, blue archaic seal mark, diameter 28cm **£700 - £900**
- 410. A Chinese porcelain baluster vase**, late 19th Century, painted in the famille verte palette with dragons amongst foliage, height 35cm **£250 - £350**
- 411. A Chinese porcelain bottle vase**, 20th Century, blossom and insect decoration, printed archaic seal mark, height 20cm, together with five late 19th Century blue and white prunus decorated vases (s.d) (6) **£150 - £200**
- 412. A Chinese blue and white jar and cover**, late 18th/early 19th Century, of bombe form, the frieze decorated with pagodas in a mountainous landscape, height 42cm **£400 - £600**
- 413. A Chinese famille rose tea bowl and saucer**, Qianlong or later, ogee form, painted with floral sprays, insects and birds highlighted in gilt, 12cm diameter **£40 - £70**
- 414. A Japanese Hirado porcelain netsuke of a Hirado boy**, Edo period (1603-1868), from Emperor kiln, smiling and crouching wearing a blue gown and headdress, height 4cm **£650 - £750**
- 415. A Japanese Bizen pottery miniature face mask**, 20th Century, of a young gentleman, impressed seal signature, height 5cm **£95 - £100**
- 416. A Chinese celadon glazed bowl cylinder vessel and cover**, Sung shipwreck, floral device to cover lobed sides, diameter 6.5cm **£65 - £75**
- 417. A Chinese Neolithic Quija Cord pot**, of ovoid form with a flat rim opening, height 7cm **£150 - £180**
- 418. An oriental antiquity terracotta burial figure**, of standing form wearing a headdress, arms crossed and a turtle below, height 18cm **£60 - £80**
- 419. A Song Dynasty small bow**, Hennan province, gently flared opening, tenmoku glaze, diameter 11.5cm **£120 - £150**
- 420. A Song Dynasty Jun tea bowl on stand**, in two sections with celadon glaze, height 14cm **£180 - £220**
- 421. Chinese blue and white and polychrome decorated tea ware**, including bowls and saucers, one Kangxi style octagonal saucer, 12cm diameter (7) **£40 - £60**
- 422. A Chinese famille vert tea bowl**, footed conical form, polychrome enamelled with flowering plant and insect, 6.5cm diameter **£30 - £50**
- 423. A Chinese famille rose water pot**, relief moulded ovoid form, fluted and modelled with a band of ruyi heads, painted with flowers and insects, 4cm high **£40 - £70**
- 424. A Chinese famille rose coffee cup**, 18th century Cantonese, polychrome decorated with figures in an interior and garden scene, on geometric ground, highlighted in gilt, 6.5cm high **£30 - £50**





425, 426 and 527

**425. A Japanese ebony netsuke**, 20th Century, carved as a co-joined toad and frog on a lily pad, inset eyes and tigers eye glands, width 4.5cm **£250 - £300**

**426. A Japanese treen netsuke**, 20th Century, carved as a kneeling man with a box containing a retractable snake, height 4cm **£80 - £100**

**427. A Japanese boxwood netsuke** in the manner of Tadakazu, Edo period (1615-1868), carved as an adult turtle and two young on a rustic plinth, inlaid black horn eyes, carved mon to the underside, height 4cm, width 4cm **£1200 - £1500**

**428. A Chinese dark green jade belt hook**, carved dragon head terminal and incised scales, length 10.5cm **£200 - £250**

**429. A Japanese Hirado miniature nodding head figure**, in the form of a monkey head figure wearing a hat, blue gown and holding a fan and bunch of flowers, height 5.5cm **£75 - £85**

**430. A large Chinese bamboo cylinder brush pot**, late 19th Century, carved in relief with figures scenes and pagodas amongst trees, height 34cm, diameter 14cm **£200 - £250**

**431. A Japanese turned stag antler netsuke**, Meiji period, 1868-1912, of barrel form with screw cover and base with mon devices, height 2.5cm **£80 - £100**

**432. A Japanese Samuria buffalo horn gunpowder flask**, 19th Century, rayon cord uniting the cover, height 14cm, together with a Samuria rattan gunpowder flask, height 16cm (2) **£140 - £160**

**433. A Japanese ivory okimono**, Meiji period, 1868-1912, in the form of man seated with a hat and parasol, oval plinth, signed, height 6.5cm, width 6.5cm **£150 - £180**

**434. A Chinese pale jade belt hook**, probably Qing period, dragon head terminal, carved scales, length 11cm **£200 - £250**

**435. A Japanese hardwood netsuke**, 20th Century, in the form of a trio of puppies with rope, signed, width 3.5cm **£40 - £50**

**436. A Japanese tan leather tobacco pouch**, Meiji period, 1868-1912, with a polished agate ojime and bone netsuke carved with a fan design, width of pouch 11cm **£120 - £150**

**437. A Japanese bronze ojime**, Meiji period, 1868-1912, in the form of a bamboo stem with snail, seal signature, height 2cm **£130 - £150**

**438. A Japanese carved boxwood Ojime**, Edo period, 1615-1858, in the form of entwined dragons, signed, height 2cm **£350 - £450**



439, 440 and 441

**439. A Japanese netsuke**, 20th Century, carved as a seated robed monk, height 3.5cm **£140 - £160**

**440. A Japanese bone Sashi netsuke**, Meiji period, 1868-1912, carved as a standing Sennin with a staff and a toad upon his shoulders, signed, height 7.5cm **£300 - £350**

**441. A Japanese antique rhino horn netsuke**, carved as a laughing robed man with a pipe, height 4cm **£1500 - £1600**



442

**442. A 19th century Japanese carved ivory corkscrew, Meiji, realistically modelled as a crayfish, set with amber eyes, 11 cm long** £350 - £400

**443. A Japanese lacquer and shibayama fire screen, Meiji, traditional gate form, the central panel applied and carved in high relief with a bird of prey on prunus branches, in mother of pearl, bone and horn, the red frame painted with floral sprays, 87cm high, 70cm wide** £120 - £180

**444. A 19th century Chinese carved ivory and yellow metal hand mirror, the handle formed from a belt hook pierced with dragons, the embossed oval back set with a roundel of a figure with fan in garden landscape, 14.5cm long** £80 - £120

**445. A 19th century Japanese shibayama box, circular, the lid set with chrysanthemums and insects in tortoiseshell, mother of pearl and abalone, 6.5cm diameter** £50 - £80

**446. A Chinese bronze and cloisonne Ding tripod censer, 18th Century, the frieze with cast dragons chasing a flaming pearl cloisonne body with trailing foliage on a blue ground, beast mask capitals to the tripod feet, height 29cm** £700 - £900

**447. A Chinese cloisonne table screen, 20th Century, circular revolving gilt metal panel with inset silk embroidery of a bird on a branch, cloisonne frame with blossom on a blue ground, height 26cm** £150 - £200

**448. A Chinese bamboo cylinder brush pot, late 19th or early 20th Century, the frieze carved in relief with character marks, height 14cm, diameter 11.5cm** £150 - £200

**449. A pair of Chinese root wood carvings, late 19th Century, each in the form of a smiling Deity riding a beast with inset glass eyes, one arm raised, sun motif, raised on an openwork naturalistic plinth, height 40cm (2)** £500 - £600

**450. A Japanese bronze okimono, Meiji, modelled as a man embracing a fish, 13.5cm high** £150 - £250

**451. A Japanese bronze usabata ikebana vase, twin handled cylindrical body on three tripod bar legs, in two sections with broad rimmed top section, 27.5cm high, 29.5cm diameter** £200 - £400

**452. A Chinese carved jade archers ring, decorated with butterflies and scrolls, 2.5cm high, 3.5cm diameter** £30 - £50

**453. A Chinese carved jade pendant, modelled in low relief with lion eating its tail on a gourd, the reverse with leaves, 4.5cm** £30 - £50

**454. Two Chinese carved jade reticulated pendants, one with a man riding a horse, the other with bird amongst flowers, 5.5cm (2)** £30 - £50



449



450





455. A Japanese treen netsuke, 20th Century, carved as a seated monkey with head turned left, inset eyes, signed, height 4cm  
£65 - £75

456. An oriental boxwood netsuke, 20th Century, in the form of a horse grazing, signed, height 5cm  
£60 - £80

457. An oriental boxwood netsuke, 20th Century, in the form of a curled up dog growling, signed, height 4cm  
£60 - £80



458. A Japanese moulded composite and painted netsuke, 20th Century, as a disgruntled gentleman, height 3cm  
£30 - £40

459. A Japanese Bizen pottery miniature horned devil face mask, impressed signature, height 4.5cm  
£75 - £85

460. A Japanese carved treen miniature face mask, 20th Century, carved as a smiling gentleman, height 6cm  
£120 - £150

461. A Japanese ivory netsuke, Meiji period, 1868-1912, carved as a grinning actor, signed, height 3.5cm  
£80 - £90

462. A Japanese Bizen pottery miniature mask, 20th Century, modelled as a disgruntled gentleman, impressed signature, height 4.5cm  
£100 - £120



463. A Japanese carved bone miniature face mask, 20th Century, smiling gentleman wearing a hat, integral string backing, dark patina, signed, height 5.5cm  
£100 - £120

464. A Japanese bone miniature face mask, 20th Century, smiling gentleman with a centre parting, integral string backing, dark patina, height 5cm  
£100 - £120

465. A Japanese ivory netsuke, Meiji period, 1868-1912, carved as a grinning horned devil face mask, signed, height 5cm Condition: damages/losses to horns  
£70 - £90

466. An oriental miniature bronze mask, 20th Century, cast as a disgruntled gentleman, height 4.5cm  
£95 - £100



468, 469 and 470

**467. A Japanese moulded composite and painted netsuke**, 20th Century, as a rotund gentleman's grinning face, height 3cm  
£30 - £40

**468. An oriental composite netsuke**, 20th Century, in form of a recumbent dog with a puppy on its head, width 3cm  
£130 - £150

**469. A Japanese ivory netsuke**, Meiji period, 1868-1912, carved as a seated smiling man showing off gourds, signed, height 3.5cm  
£95 - £100

**470. A Japanese ivory netsuke**, Meiji period, 1868-1912, carved as a horned grinning devil, inset black eyes, signed, height 3cm  
£140 - £160

**471. An oriental carved dark green jade netsuke**, 20th Century, carved as a grotesque face mask with large ears, height 4.5cm  
£75 - £85

**472. A Japanese ivory miniature okimono**, Meiji period, (1868-1912), carved in the form of an open clam shell with internal diorama of a man with staff leading an infant in a landscape, signed, width 4cm  
£95 - £100



**473. A Japanese ivory netsuke**, Meiji period, 1868-1912, carved as a robed horned devil holding a mallet beside a temple bell with internal revolving faces, height 4.5cm  
£950 - £1000

**474. An oriental bone netsuke**, 20th Century, of ovoid form carved as a man with hands behind his head, retractable eyes, signed, height 3.5cm  
£75 - £85

**475. An oriental bone netsuke**, 20th Century, carved as a bearded elderly man with a staff, retractable eyes, signed, height 4.5cm  
£75 - £85



476. An Indian treen Mughal spice or betel box, 19th Century or earlier, domed cover, geometric polychrome decoration, height 12cm £200 - £300



477

477. Indian Mughal School, late 19th or early 20th Century, study of a falcon on a perch, signed in Arabic l.r., illuminated and gilt floral border, 42 by 32cm, gilt frame £200 - £300

478. An early 19th century Chinese Canton export carved brise fan (中国雕花象牙扇), with guardsticks carved in relief to each side with dragons and oriental figures, the sticks carved and pierced recto only in relief with scenes of figures in a formal garden setting, trees and pavilions below an upper frieze of dragons and ho-ho birds, 19cm long £200 - £300

479. Emily - a late 18th / early 19th century Chinese Canton export carved ivory brise fan (中国雕花象牙扇), with guardsticks carved in relief to each side, the sticks carved and pierced in relief with floral and geometric patterns surrounding a central roundel containing the name Emily, all set below an upper frieze of many carved shells and sea creatures, on the lower gorge is a carved monogram, 17cm long £200 - £300

480. A Chinese Qing dynasty face screen / fixed fan or Pien Mien, commonly known as a 'Swatow' fan, mid 19th century, also known as a duck's foot fan by the Chinese, ivory handle and leaf of handmade paper, signed, circa 1850, 15 inches high

Note: a similar fan can be seen in the Metropolitan Museum of New York collection # 45 57 <https://www.metmuseum.org/art/collection/search/53563>, see also Neville Irons 'Fans of Imperial China' ISBN 090791800X Page 228 Pl. 77 £300 - £500

481. A late 18th / early 19th century Chinese Canton export carved ivory grand brise fan (中国雕花象牙扇), the guardsticks carved in high relief with lotus blossom, the sticks very finely pierced with geometric patterns along with a vacant central shield, 10.5 inches high £150 - £250

## WORKS OF ART AND METALWARE

482. A cased set of William III pocket coin scales, circa 1700, with graduated cup weights and troy scale for weighing silver, the fruitwood box incised W.L, width 13.5cm £400 - £600

483. A George III green painted wood tipstaff, with ball finial, marked GIIIR, 80cm high £100 - £200

484. A Victorian brass inkwell, modelled as three cast dogs, united by chains, supporting a sphere with hinged lid and glass vessel, on a circular base, 15cm high £50 - £100

485. A Spanish Romanesque style stone carving of the Last Supper, after an original 11th century example, 37cm x 29cm £40 - £70



486

486. An Austrian cold painted bronze figure group of two dachshunds, modelled standing, joined by a chain between collars, 8cm long £80 - £120

487. An onyx ashtray in the manner of Asprey, London, 20th Century, surmounted with a bronzed model of a standing dachshund, unmarked, width 14cm, together with two vide poche, one pink veined marble, the other alabaster, each mounted with a model dog (3) £40 - £60

488. A group of miniature model dachshund and other dogs, to include cold painted bronze, painted alloy, and one antique ivory, in various poses, including a two with slippers, one with a string of sausages, one with a bag, height of largest 8cm (11) £50 - £80

489. A group of various model dachshunds, cold painted spelter/alloy, gilt metal, bronze, bronzed metal in various poses, to include two double groups, two begging, one on a plinth, width of largest 16cm (7) £100 - £120

490. A Russian Orthodox icon of Virgin and child, painted on board, cased in a silver cover, 18cm x 14cm £50 - £80

491. A Victorian mahogany tambour lidded writing slope, set with a satin and harewood shell cartouche, the single draw pulling out to cause the roll top to retract, fall front slope, brass side handles, 36cm wide, 17.5cm high, 26cm deep £80 - £120

492. Prince Rupert of the Rhine (1619-1682), autograph manuscript commission to Sir Henry Newton Lieutenant Colonel of Cuirassiers, imprint of seal to top left £40 - £60



493

493. A 19th century micro mosaic plaque, oval form, depicting the Pantheon, within an onyx ground, 3.5cm by 3cm  
£40 - £70



498

500. A 19th century carved ivory parasol handle, modelled as a hand holding a ball, the sleeve naturalistically fluted, ivory section 11cm long  
£40 - £70

503. Birmingham Guild of Handicraft, a pair of Arts and Crafts brass door handles, curved and tapered tendril design on square, ogee edged pads, stamped marks BGH, 30.5cm long  
£150 - £250



494

494. A Victorian novelty brass letter clip, realistically modelled as a ducks head, set with glass eyes, spring action, with wall hook hole, 15.5cm long  
£40 - £70

501. William Morris for Harry Marillier, an Arts and Crafts Christmas card, 1897, sent from Kelmscott House, Hammersmith, printed message in black and red, 9cm x 11.5cm  
£80 - £120

504. Pietro Chiesa for Fontana Arte (attributed), a Modernist glass desk set, circa 1950s, including pen stand, blotter and ashtray, green tinted and chamfered, 18cm long (3)  
£80 - £120

502. An Arts and Crafts enamelled plaque, rectangular form, the central verse Praise my soul the King of Heaven, set over a watery landscape scene, highlighted in gilt, 10cm x 15.5cm, framed  
£100 - £150

505. Asprey and Co., an Art Deco style macassar and walnut cigar box, cuboid form with chamfered hinged lid, with chrome plated fittings, sandal wood lined, 11.5cm wide, 7cm high, 10.5cm deep  
£50 - £80

495. An Anglo Indian rosewood and inlaid jewellery box, cuboid form, wire strung decoration of foliate scrolls and geometric floral and roundel motifs, inset with abalone, 16.5cm wide, 7.5cm high, 11.5cm deep  
£80 - £120

496. A silver mounted walking stick, Chester 1894, natural olive wood, the gnarled crop handle forming a dog's head, 83.5cm long  
£50 - £80

497. A silver mounted carved ebony novelty inkwell, London 1912, modelled as an owl, set with glass eyes, the head removable, 10cm high  
£80 - £120

498. A Victorian tortoiseshell tea caddy, circa 1840, serpentine fronted cuboid form, hinged domed lid opening to reveal a double lidded interior, silver stringing, 19.5cm long, 11.5cm high, 12.5cm deep  
£200 - £400

499. Georges Gardet, a bronze figure group of mice and a snail shell, signed in the cast, on marble base, 31cm long  
£300 - £500



503



506

506. An American Art Deco bronze and steel cigarette box, Silver Crest mark, cuboid form with band straps, bisected cedar lined interior, 15.5cm wide, 5cm high, 9cm deep  
£100 - £200



508





509



512



513

**507. Just Andersen, a Danish Bronze pipe rest, in the form of a bird, on pedestal base, cast marks, 7cm high** £40 - £60

**508. Holger Fridericias for Ildfast, an Art Deco Danish bronze bowl, circa 1930, shallow flared ogee form, on a circular splayed foot, 'aged' patina with gilt rim, stamped marks Ildfast, HF Aegte Bronze, 30cm diameter, 6.5cm high** £40 - £60

**509. Karl Hagenauer, an Austrian Art Deco nickel plated wall mask, after 1927, fret cut and angled with curled hair, stamped marks, 27.5cm long** £300 - £500

**510. Karl Hagenauer, an Austrian brass casket, circa 1940s, the chamfered lid embossed with stylised palm, on four cast bracket feet, wooden lining to the interior, stamped marks, 20.5cm wide, 8cm high, 15.5cm deep** £200 - £300

**511. Karl Hagenauer, an Austrian Art Deco nickel and hardwood inkwell, after 1927, the rectangular base with two inkwells, hinged lids with stylised cat handles, rectangular tray, stamped marks, 30cm x 19cm** £200 - £300

**512. Josef Lorenzl, an Art Deco gilt bronze and ivory figure of a tennis player, circa 1930, modelled as a woman in long skirt and head band, on green onyx plinth, signed in the cast, 23cm high** £300 - £500

**513. Ferdinand Preiss, an Art Deco painted bronze and ivory figure of a girl fishing, circa 1925, on green onyx plinth pedestal, monogram in cast, 19cm high** £300 - £500

**514. Pierre Le Faguays, an Art Deco bronze figure, Amazonian Warrior, circa 1930, green patinated, modelled as a nude woman with shield and sword, on cuboid marble plinth, signed to the base, 55.5cm high** £700 - £1000

**515. Pierre Le Faguays, an Art Deco bronze figure, the Amazon, circa 1925, modelled semi clad with shield and sword, on granite base, signed to the base, 28.5cm high** £300 - £500



514



516

**516. Bruno Zach, a patinated bronze figure group of two dancers, circa 1925, gilded limbs, on a stepped and chamfered marble plinth, signed in the bronze, 44.5cm high** £1500 - £2500

**517. A E Jones, an Arts and Crafts copper and silver tray, circa 1910, twin handled oval form, polished, applied with cast Tudor roses and a ribbon and laurel border, stamped numbers, 39.5cm long** £100 - £150

**518. A pair of large Jugendstil copper candlesticks, circa 1925, cylindrical column form on domed bases with dished sconce trays, 27cm high (2)** £100 - £200

**519. Glasgow School, a large Arts and Crafts brass charger, repousse decorated with Celtic knot motifs around a central embossed plaque, 56cm diameter** £200 - £300

**520. Glasgow School, an Arts and Crafts brass and wrought iron chestnut roaster, in the style of Margaret Gilmour, the central repousse rose within a border of pierced holes and incised rope banding on a slender twisted and coil ended handle, 97cm long** £120 - £180

**521. Arthur Stanfield Dixon for Birmingham Guild of Handicraft, an Arts and Crafts twin handled copper and brass vase, ogee form with scrolled strap handles, fret cut with foliate terminals riveted to the body, stamped marks, 16cm high** £100 - £200

**522. An Arts and Crafts copper jug, Joseph Sankey and Son, conical form embossed with Art Nouveau style flowers, the lid with scallop shell, angled handle, 18cm high** £60 - £80



517



521



## PAPERWEIGHTS



523

523. Baccarat, a glass dog rose paperweight, the five red and white striped petal flower with star and rose cane centre, within a wreath of alternating green and white floral canes, lens cut top and body, the base with star cutting, 6.5cm diameter  
£100 - £200



524

524. Baccarat, a concentric millefiori glass paperweight, the central star cluster cane within four rings of cluster canes, in blue, red, green and white, 6.5cm diameter  
£100 - £200



525

525. Clichy, a small close packed mixed cane millefiori glass paperweight, circa 1845, random cluster of rose and other floral multicoloured canes, blue and white striped base, 4.5cm diameter  
£100 - £200



526

526. Clichy, a small floral glass paperweight, the three flower stem with five pointed leaves, 4cm diameter  
£100 - £200

527. Baccarat, a millefiori garland glass paperweight, blue and white knotted cane garlands surrounding a red ring and central cane cluster, 7cm diameter  
£200 - £300

528. Clichy, a patterned millefiori cluster and wreath glass paperweight, central pink rose and ring of purple cased canes, within a band of alternating pairs and single floral canes in green and red, 5.5cm diameter  
£60 - £100

529. Paul Ysart, a large concentric ring glass paperweight, three rings, each of alternating millefiori canes, around a central star cane, marbled blue ground, 9cm diameter  
£50 - £80

530. Clichy, a patterned millefiori cluster and wreath glass paperweight, central star cluster cane and ring of green cased white roses, within a band of blue cased canes, 6cm diameter  
£80 - £120



531

531. St Louis, a large dahlia and pansy glass paperweight, the single stem sprig with pink pompon and brown orange pansy head, on an opaque lattice ground, 8.5cm diameter  
£200 - £300

532. Clichy, a scrambled cane glass paperweight, multicoloured rods and spiral canes, 5cm diameter  
£50 - £80



533

533. Bacchus, a silhouette concentric millefiori glass paperweight, circa 1850, the central portrait cane with the bust of a woman in profile, within four bands of yellow, green and red canes, 6.5cm diameter  
£50 - £80



534

534. Baccarat, a large millefiori garland glass paperweight, five different coloured cluster cane scrolls, around a central blue cased cane, on a white opaque ground, 8cm diameter  
£200 - £300



535

535. Baccarat, a millefiori garland glass paperweight, red and green knotted cane garlands surrounding a pink ring and central opaque ground cane cluster, 7cm diameter  
£200 - £300



536

**536. Norman Stuart Clarke, a studio iridescent glass paperweight, 1987, the surface inset with lustre cane clusters and striated web, signed, 6.5cm diameter**  
£40 - £60

**537. Paul Ysart, two glass paperweights, one of multicoloured and aventurine gravel and controlled bubble form, set in a white ground, the other with a central flower and ring of alternating canes, on green marbled ground, 7.5cm diameter (2)**  
£50 - £80



538

**538. Paul Ysart, a millefiori glass cane and rod paperweight, five spaced canes within a wreath of multicoloured irregular canes, alternating triplets of canes with aventurine core opaque twist rods, 7cm diameter**  
£40 - £70



539

**539. St Louis, scrambled millefiori glass paperweight, circa 1850s, containing irregular coloured canes, 5.5cm diameter**  
£100 - £200



540

**540. Clichy, a spaced millefiori glass cane paperweight, two concentric bands of twelve and six irregular canes around a central cane, on a dark blue ground, 6cm diameter**  
£200 - £300



541

**541. Clichy, a spaced millefiori glass cane paperweight, two concentric bands of eleven and six irregular canes around a central cane, suspended in a colourless ground, 6cm diameter**  
£200 - £300



542

**542. John Deacon, two floral glass paperweights, one pink clematis on a blue ground with controlled air bubble border, the other pink flower on black ground, signed JD in cane, largest 7cm diameter (2)**  
£70 - £100

**543. John Deacon, two floral glass paperweights, one red aventurine clematis on a gravelled ground within a band of canes, the other with two blue flowers on a folded multi strand opaque spiral band ground, dated 1993, largest 7cm diameter (2)**  
£70 - £100



544

**544. St Louis (attributed), a purple dahlia glass paperweight, circa 1850, the flower formed of four overlapping rings of striated petals, on six green petals, multi star cane centre, ground pontil, 7cm diameter**  
£200 - £400





545

**545. Paul Ysart, a concentric millefiori glass paperweight**, three rings of multicoloured canes, multistrand laticinio rods and alternating spaced canes, around a central core, on amber ground, unsigned, rough ground pontil, 8cm diameter

£50 - £80



549

**549. Paul Ysart, a spaced millefiori glass paperweight**, harlequin clusters of canes within a scrambled spiral ground, broken pontil and original sticker, signed in cane H, 7.5cm diameter

£40 - £70

**550. Perthshire, two annual collection glass paperweights**, 1979 B and 1972 B, Faceted Cushion and Blue Silhouette, both with lens cut tops and sides, concentric millefiori and spiral laticinio rods, signed to underside 1972P and 1979P, 8cm diameter (2)

£40 - £70



546

**546. Clichy, a large close packed mushroom irregular millefiori glass paperweight**, circa 1860s, the random arrangement of canes including pink and white roses, within a blue and white stand border, 9cm diameter

£100 - £200

**547. Paul Ysart, a concentric millefiori glass paperweight**, alternating rings of multicoloured canes and multistrand laticinio rods between inverted canes, in orange and blue, on green aventurine ground, unsigned, rough ground pontil, 8cm diameter

£50 - £80

**548. Perthshire, two annual collection glass paperweights**, 1976 E and 1975 C, including Moss Ground and Millefiori Circlets, one with a complex centre ground within three rings of green alternating with to rings of red and white canes, the other with five spaced millefiori clusters around a central core, opaque red amber ground, both signed, one P, the other verso 1976P, 8cm diameter (2)

£40 - £60



551

**551. Perthshire, two glass millefiori cane paperweights**, one with a central picture cane of a marmalade cat within three pairs of spaced canes and semi circular wreath border, the other similarly composed with a complex centre, signed P1982 and P, 6.5cm diameter (2)

£40 - £60

**552. Paul Ysart, two glass millefiori cane paperweights**, one with ten radial laticinio rods emanating from a seven cane floral wreath, three levels of rosette between each rod, the other with a six pointed star on deep blue ground, rough pontils, 8cm diameter (2)

£50 - £80

**553. Whitefriars, four glass millefiori cane paperweights**, each with lens cut top and sides, one with spaced canes, the others concentric rings, two signed and dated 1985 and 1977, one with original stickers, 8cm diameter (4)

£50 - £100



554

**554. Paul Ysart, a concentric millefiori glass paperweight**, the close packed centre of pink, blue and orange canes, within a ring of white canes with red floral centres, the external border of alternating pink and green canes, signed PY, 7cm diameter

£40 - £70

**555. Perthshire, two annual collection glass paperweights**, 1982 B and G, including Flamingo and Pompon, both with lens cut tops, one with further lens cutting to the sides, honeycomb cane pink flower, each signed in cane 1982P, 6cm diameter (2)

£40 - £60

## GLASS

**556. Two Imperial Russian blue glass Smirnov vodka bottles,** circa 1886, relief moulded with Imperial coats of arms and inscribed in Cyrillic 'Supplier to the Highest Court Petr Arsentevich Smirnov at the Iron Bridge in Moscow', 35.5cm high (2) **£200 - £300**

**557. Thomas Webb, a miniature cameo glass vase,** circa 1880, bottle form, white over cased yellow on white, carved with ivy leaves below a lappet border, 5cm high **£100 - £150**

**558. Thomas Webb, a silver mounted cameo glass scent bottle,** William Stringer Mills, London 1884, spear head amphora form, white over amber, carved with floral and fern specimens, 10.5cm long **£200 - £300**

**559. A Clichy cane stripe glass vase,** triple gourd form, alternating blue, white and colourless wrythen stripes, 15cm high **£60 - £100**



560

**560. Baccarat, a pair of Japanesque cased and enamelled glass vases,** circa 1880, square section baluster form, decorated with peacock and stork in watery garden landscapes, highlighted in gilt, colourless over blue over opaque, 17cm high (2) **£100 - £200**

**561. A Stourbridge cut and etched glass jug,** circa 1880, ovoid form, engraved with wildflowers and insects, hollow handle, on star cut foot, 26.5cm high **£60 - £100**

**562. An early Victorian pillar moulded glass carafe,** Newcastle circa 1840, the spherical body with optic ribbing, flared neck and polished pontil, 18cm high **£20 - £40**

**563. Ludwig Moser, a Bohemian cut glass Campana urn vase,** circa 1920s, in the Regency style, apple green, slice cut on stepped foot, 19cm high **£30 - £50**

**564. An Arts and Crafts iridescent glass Campana vase,** possibly John Walsh Walsh, pedestal footed form, amber lustre on colourless body, 13.5cm high **£40 - £60**

**565. A Secessionist enamelled glass dish,** circa 1920, circular, decorated with a nude woman dancing with beaded and knotted rope, 28cm diameter **£60 - £100**

**566. Peter Behrens for Benedikt von Poschinger, a pair of Secessionist Champagne glasses,** designed circa 1898, ogee form optic ribbed bowls on bowed green glass stems and base, 25cm high (2) **£80 - £120**

**567. Josef Hoffmann for J J Lobmeyr, a pair of Secessionist wine glasses,** circa 1917, Patrician type, bell shaped bowls on slender stems and flat bases, 14.5cm high (2) **£80 - £120**

**568. Charles Schneider, an Art Deco Jade glass vase,** slender inverse baluster form, mottled brown over yellow, 32.5cm high **£100 - £150**



561



562



563





569

**569. Emile Galle, a cameo glass Viola vase**, circa 1900, bulbous form, purple over colourless, signed in cameo, 10.5cm high **£300 - £400**



570

**570. Loetz, a Candia Silberiris iridescent glass vase**, dimpled tricorn section with crimped folded rim, 20.5cm high **£120 - £180**



571

**571. Monart, an Art Deco Scottish art glass vase**, shouldered form, mottled purple aventurine draining to marbled blue, raised pontil and remnants of sticker, 17cm high **£70 - £100**



572

**572. Vasart or Strathearn, a Scottish art glass vase**, shouldered form with flared neck, mottled brown with aventurine inclusions over red orange, 10.5cm high **£20 - £40**

**573. Nazeing, an Art Deco clouded glass posy bowl**, circa 1930, the conical body with wide splayed rim, mottled green opaque swirl design, 24cm diameter **£20 - £40**



574

**574. Edvard Stromberg for Strombergshyttan, an Art Deco smoky glass vase**, optic ribbed trumpet form with wavy rim, 20.5cm high **£30 - £50**



575

**575. Edvard Stromberg for Strombergshyttan, an Art Deco smoky glass bowl**, circa 1930, optic moulded flared form with wavy rim, 23cm diameter **£30 - £50**

**576. Simon Gate for Orrefors, an Art Deco cut glass vase**, fluted conical form on a plain black foot, incised marks of LA354, 21cm high **£80 - £120**



577

**577. John Luxton for Stuart, a cut glass vase**, circa 1950s, footed conical form, with double mitre cut wrythen bands, acid mark, 18cm high **£30 - £50**

**578. John Luxton for Stuart and Sons, a cut glass bowl**, circa 1950s, footed conical form, decorated with a band of stylised stars over vertical lines, acid mark, 23cm diameter, 13cm high **£30 - £50**



579

**579. John Luxton for Stuart and Sons, a large Edge glass bowl**, conical form, cut with vertical panels, acid mark, 17cm high, 21cm diameter **£30 - £50**

## CONTINENTAL CERAMICS



580

580. Geoffrey Baxter for Whitefriars, a Royal Blue glass beak vase, 9556, designed 1960s, cased colourless over blue, polished pontil to underside, 20.5cm high £20 - £30



581

581. Sven Palmqvist for Orrefors, a Selena glass vase, circa 1954, rounded conical form with pinched lozenge section rim, on conical foot, blue opalescent, incised marks PU 3090/65, 29cm high £30 - £50



582

582. Vicke Lindstrand for Kosta, a glass sculptural fish, pointed teardrop form with internal air bubbles, signed LH1624, 26cm long £40 - £70



583

583. Sean O'Donoghue, an Australian iridescent art glass vase, shouldered ovoid form, combes lustre swag design, signed, 9.5cm high £20 - £40

584. A 19th century Palissy ware sand Majolica glazed vase, shouldered form, modelled with an applied rose in high relief, on a blue and white gravel banded body, turquoise interior, painted and incised marks, 16cm high £20 - £40



585

585. A Royal Bonn hand painted vase, inverse baluster or Meiping form, decorated with a cockerel in a country landscape, signed, impressed and printed marks, narr Melch d'Hondecoeter, Bode, 21cm high £40 - £70

586. A Dresden cabinet plate, painted with pastoral courting figures within a reticulated and relief moulded foliate border painted with floral sprigs, painted marks, 22.5cm diameter. £30 - £50



587

587. A Meissen blanc de Chine figure of a dachshund, modelled in coiled squatting position, incised and underglaze marks N223, 9.5cm high £100 - £150



588

588. A Meissen Bottger Steinzeug figure of a long haired dachshund, modelled standing, impressed marks, 26.5cm long £80 - £120

589. Three Rosenthal figures of dachshunds, modelled in various positions, printed marks, 14.5cm high (3) £50 - £80

590. Otto Eichwald for Rosenthal, a figure of a dachshund, model 120, designed 1912, on oval base, printed Iron Cross mark, 28.5cm long £40 - £70

591. Two Royal Copenhagen figures of dachshund puppies, model 3140 and 1238, printed marks, 8cm high (2) £40 - £60



592

592. Fritz Heidenreich for Rosenthal, a figure of a dachshund puppy, modelled lying down, printed marks, 21cm long £40 - £70



593. Theodor Karner for Rosenthal, a figure of a dachshund puppy, model 296, modelled coiled, printed marks, 15.5cm high £50 - £80

594. Dorothea Moldenhauer for Rosenthal, a blanc de chine painted figure of a dachshund, model 62, sitting on a Rococo scroll base, highlighted features, impressed and printed marks, 7cm high £40 - £60

595. A Karl Ens figure of a dachshund, circa 1930s, modelled sitting, printed marks, 19.5cm high £40 - £70



596

596. Erik Nielsen for Royal Copenhagen, a large figure of a dachshund, modelled sitting, painted marks and incised signature, 23cm high £50 - £80

597. Knud Kyhn for Royal Copenhagen, a model of a sleeping dachshund, number 781, painted numbers, 20.5cm long £50 - £80

598. Georg Kuspert for Rosenthal, a figure of a dachshund puppy, modelled sitting, 10cm high £30 - £50

599. Two Rosenthal figures of dachshunds, modelled standing and lying down, printed marks, 15.5cm long (2) £40 - £60

600. A Karl Ens figure of a long haired dachshund, circa 1930s, modelled sitting, printed marks, 22cm high £40 - £70

601. A Longwy art pottery vase, knob necked bulbous bottle form, enamelled in the Qianlong Oriental style with Persian quatrellobed cartouches within a foliate scroll ground, 29.5cm high £40 - £70

602. A Longwy art pottery plate, decorated in the Aesthetic style with goose and flowering plant on craquelure ground, within a rosette and leaf cloisonne enamel border, printed marks, 19.5cm diameter £40 - £70



601



603

603. A Longwy art pottery vase, bottle form, painted with chrysanthemums and birds on a white ground, between ruyi lappet borders, impressed marks, 20.5cm high £80 - £120

604. Clement Massier, an art pottery figure of a frog, relief moulded with open mouth, ox blood glazed, original paper label, 8cm high £50 - £80

605. A Longwy art pottery plate, decorated in the Oriental style with cloisonne type enamels, four stylised leaf cartouches with lilies, on a blue fish scale ground, within entwined foliate scroll border, impressed mark, 22cm diameter £40 - £70



606

606. A near pair of Longwy art pottery vases, hexagonal section baluster form, cloisonne type enamel decoration of flowering and leafy branches, printed marks, 13.5cm high (2) £100 - £200



607

607. Michael Andersen, a set of four Danish pottery figures of the Seasons, circa 1940s, modelled as children in various poses, lustre and Persian glazed, incised marks, 5232-5235, 12.5cm high (4) £50 - £80

608. Heinrich Ernst Weisser for Berlin, a blanc de Chine figure of a polar bear, circa 1955, modelled on all fours, head turned, underglaze blue mark, 25cm long £60 - £100

609. Goldscheider, an Orientalist terracotta figure of an African woman, circa 1900, polychrome decorated, incised indistinct number, 98cm high £100 - £200



610

610. Germaine Bouret for Goldscheider, Komm mit! figure group, model 7664, circa 1936, modelled as a girl with Scottie dog, printed marks incised 249 7, 23.5cm high £300 - £500

## ART POTTERY

611. A boxed set of six Moorcroft miniature vases, various designs and shapes, circa 2005, including ginger jar, 5.5cm high (6) £60 - £80

612. Moorcroft for Moorcroft Collector's Club, Rapunzel vase, 1997, elongated baluster form, impressed and painted marks, 31cm high £100 - £150



613

613. William Moorcroft for James MacIntyre, a Daisy pepper pot, circa 1902, together with three acorn salt and pepper pots, 6.5cm high (4) £30 - £50



614

614. William Moorcroft for James MacIntyre, a pair of Florian Poppy cruet pots, circa 1899, cylindrical form with silver plated mounts including a pepper pot and mustard, printed marks and underglaze green monogram, 7cm high £30 - £50

615. James MacIntyre, a novelty silver mounted hazelnut scent bottle, Saunders and Shepherd, Birmingham 1888, realistically modelled, screw cap with cork seal, 4cm long £250 - £300



616

616. Robert Heron and Son, a Wemyss Ware pottery pig figure, painted in black and white, impressed marks, 9.5cm high £80 - £120





617

617. A Rookwood Art Pottery jug, circa 1890, slender ovoid shouldered form with crimped rim, slip decorated with flowers on an ochre and green ground, 24.5cm high £60 - £80



618

618. A Doulton Aesthetic Movement biscuit barrel, rounded cylindrical form, decorated with cranes, fish and waterlilies in a wetlands landscape, on a foliate scroll ground, silver plated mounts, swing handle and lid, impressed and printed marks, 18cm high £60 - £100

619. A Royal Doulton stoneware leather effect jug, silver mounted, stitched form with matte glaze, 23cm high £30 - £50

620. A Doulton Lambeth stoneware mustard pot, 1877, bulbous form with cylindrical neck, relief moulded and sgraffito decorated with lappets and beading, silver plated mounts and lid, 7.5cm high £30 - £50



621

621. Mark V Marshall for Royal Doulton, a stoneware vase, 1905, knopped conical form, incised scrolling tendrils and poppy heads, impressed marks, 26.5cm high £80 - £120

622. Florrie Jones for Royal Doulton, a stoneware vase, shouldered ovoid form, incised floral tendrils below a scroll border, 25cm high £40 - £70

623. Ruskin Pottery, a large Souffle Lustre bowl, 1921, shallow rounded form with inverted rim, turquoise with curtain glaze, impressed marks, 31cm diameter £50 - £80

624. Ruskin Pottery, an egg shell Lustre bowl, 1923, footed and rounded form, orange glaze, impressed marks, 25cm diameter £80 - £120

625. Ruskin Pottery, an egg shell Lustre bowl, 1922, footed and rounded form with everted rim, orange glaze, impressed marks, 25cm diameter £80 - £120

626. Ruskin Pottery, a Lustre vase, 1922, shouldered cylindrical form with flared foot, orange glaze, impressed marks, 16cm high £40 - £70

627. Ruskin Pottery, a trial shape fruit peel Lustre dish, 1923, shallow rounded form, blue glaze with iridescent finish, impressed marks and painted number 3000, 24cm diameter

Note: an apparently unrecorded shape, only one other example is currently known £80 - £120



628

628. Ruskin Pottery, a Crystalline vase, circa 1930, shouldered form with conical neck, blue bands over green ochre mottled glaze, impressed marks, 21cm high £40 - £70



629, 630, 631 and 632

**629. William Howson Taylor for Ruskin Pottery, a Crystalline vase,** 1931, elephants foot bulbous form, ochre over orange over blue dripped bands, incised signature and impressed marks, 13cm high  
£40 - £70

**630. Ruskin Pottery, a small Crystalline vase,** 1932, ovoid conical form, blue streak over cream, impressed marks, 8cm high  
£30 - £50

**631. Ruskin Pottery, a Crystalline pot and cover,** circa 1930, rounded form with three bracket feet, cylindrical knob to lid, bands of blue, orange and taupe glaze, impressed marks, 10cm diameter  
£40 - £60

**632. Ruskin Pottery, a small Crystalline vase,** 1927, shouldered barrel form, grey over pale orange, impressed marks, 11.5cm high  
£40 - £70

**633. Ruskin Pottery, a Matt Stone Crystalline vase,** 1927, shortened baluster form, mottled brown ochre, impressed marks, 11cm high  
£40 - £70

**634. Ruskin Pottery, a small egg shell Lustre bowl,** 1913, footed and rounded form, orange fruit peel glaze, impressed marks, 10.5cm diameter  
£30 - £50

**635. Ruskin Pottery, a Crystalline vase,** 1932, conical bulbous form, mottled blue green over blue over orange, impressed marks, 12cm high  
£30 - £50

**636. Ruskin Pottery, a Crystalline trial bowl,** 1927, conical form, streaky grey ochre glaze, impressed marks and painted number 684, 16cm diameter  
£40 - £70

**637. Ruskin Pottery, a Crystalline trial vase,** 1927, conical bulbous form, mottled blue over grey ochre, impressed marks and painted 558, 12.5cm high  
£30 - £50

**638. Ruskin Pottery, a Crystalline vase,** 1932, squat double gourd form, pale green mottled streaks over orange band, impressed marks, 12cm high  
£40 - £70

**639. Ruskin Pottery, a Matt Crystalline egg cruet,** circa 1930, mottled blue including three egg cups and circular tray, impressed marks, 13.5cm diameter  
£40 - £60

**640. Ruskin Pottery, a Lustre vase,** 1922, onion bottle form, orange glaze, impressed marks, 20.5cm high  
£30 - £50

**641. Ruskin Pottery, a Matt Crystalline dish,** circa 1930, plain circular form, mottled green glaze, impressed marks, 13.5cm diameter  
£20 - £40



642, 643 and 644

**642. Ruskin Pottery, a Lustre vase,** 1918, conical bulbous form, iridescent green over red, impressed marks 15.5cm high  
£80 - £120

**643. Ruskin Pottery, a Lustre vase,** 1922, cylindrical shouldered form with splayed foot, turquoise iridescent glaze, impressed marks, 16cm high  
£40 - £60

**644. William Howson Taylor for Ruskin Pottery, a Crystalline vase,** 1931, bulbous form, ochre draining to pale green turquoise, incised signature and impressed marks, 16cm high  
£40 - £60

**645. Ruskin Pottery, a Lustre vase,** circa 1915, bulbous globe and shaft form with flared neck, pink hares fur type iridescent glaze, impressed marks, 23cm high  
£100 - £150

**646. Ruskin Pottery, a Lustre vase,** circa 1922, bulbous globe and shaft form with flared neck, yellow iridescent glaze, impressed marks, 16cm high  
£40 - £60





651, 652 and 653



647

**647. Ruskin Pottery, a Lustre vase**, circa 1920, shouldered ovoid form, mottled amber iridescent glaze, impressed marks, 19cm high  
£100 - £150

**648. Ruskin Pottery, a Souffle Lustre bowl**, 1916, ovoid form, turquoise glaze, printed and impressed marks, 15cm diameter  
£80 - £120

**649. Ruskin Pottery, a Lustre vase**, 1923, elongated shouldered rolling pin form, turquoise iridescent glaze, impressed marks, 27cm high  
£50 - £80

**650. Ruskin Pottery, a Lustre vase**, 1920, flared conical form, turquoise iridescent glaze, impressed marks, 25cm high  
£40 - £70

**651. Ruskin Pottery, a matched pair of Lustre candlesticks**, 1917 and 1918, splayed form with ogee sconces, pink iridescent glaze, impressed marks, 17.5cm high (2)  
£200 - £400

**652. Ruskin Pottery, a Hares Fur Souffle Lustre vase**, 1918, shouldered form, mauve iridescent glaze, impressed marks, 21.5cm high  
£100 - £150

**653. Ruskin Pottery, a Hares Fur Souffle Lustre vase**, 1910, shouldered form, crushed strawberry iridescent glaze, impressed marks, 22cm high  
£120 - £180

**654. Pilkington, a Royal Lancastrian tazza**, 1912, relief moulded fluted dish on splayed pedestal foot, mottled green matt glaze, impressed marks 2537, 24cm diameter, 10.5cm high  
£40 - £70

**655. Bernard Moore, a painted figure of a monkey in jacket**, set with glass eyes, orange coat, 9cm high  
£40 - £70

**656. Bernard Moore, a small figure of an elephant**, blue turquoise glazed, painted monogram, 6cm long  
£80 - £120

**657. Bernard Moore, a figure of an owl**, blue turquoise glazed, modelled sitting on a mound, painted mark, 12.5cm high  
£80 - £120



658

**658. Harry Nixon for Royal Doulton, a Flambe prunus bowl and cover**, rounded form with flat lid, gilt painted with blossom, painted monograms, 12.5cm diameter  
£100 - £150



659

659. A Royal Doulton Flambe prototype figure of a hamster, unmarked, 10.5cm high £100 - £200



660

660. Charles Noke for Royal Doulton, a Flambe Cavalier King Charles Spaniel, HN127, printed mark, 9.5cm high £150 - £250

661. Charles Noke for Royal Doulton, a silver mounted Flambe pig dish, 1907, printed flambe marks, 14cm long £80 - £120



662

662. Charles Noke and Harry Nixon for Royal Doulton, a Chinese Jade figural soap dish, oval form, modelled with a dogs mask, 12cm long £200 - £400



663

663. Charles Noke and Harry Nixon for Royal Doulton, a Chinese Jade figure group of two dogs, 9cm high £200 - £400



664

664. Louis Rhead for Powell, Bishop and Stonier, a large Arts and Crafts jug, conical form, printed in the Art Nouveau style with PreRaphaelite maiden amongst hollyhocks, beneath a band of trees, printed marks, 31.5cm high £200 - £300



665

665. Frederick Rhead for Foley, an Intarsio ewer, the circular disc body painted with PreRaphaelite Queen and Athena to each side, on a pedestal foot, slender knopped neck and vertical spout painted with flowers, twisted cord handle, printed marks, 26.5cm high £130 - £180



666

666. Charles Vyse, a Chelsea pottery figure of a balloon seller, 1920, painted in yellow, purple and green striped dress, painted marks, 22.5cm high £200 - £300





671

668. Daisy Makeig Jones for Wedgwood, a Fairyland Lustre pendant, Fairy with a Large Hat, oval cabochon form, mounted in silver, 4.5cm long £80 - £120

669. Clarice Cliff for Royal Staffordshire, a Pink Pearls Biarritz dish and cover, circa 1938, circular domed cover, printed Biarritz marks, plate 16.5cm long £40 - £60

670. Stella Crofts, an art pottery figure of a zebra, 1945, modelled standing on a plinth, incised marks, 13.5cm high £80 - £120

671. Hans Coper and Lucie Rie, a studio pottery bowl, circa 1947, rounded conical form with pouring lip, ochre glaze with manganese rim, artist seal marks, 28.5cm diameter, 15cm high £1500 - £2500



667

667. Daisy Makeig Jones for Wedgwood, a Fairyland Lustre brooch, Woodland Elves III, Feather Hat, circular form mounted in silver, on flambe ground, 5cm diameter £80 - £120



670



672

672. Bernard Leach, a St Ives studio pottery vase, ovoid form, painted with blue bands and stylised leaves, personal and studio seal marks, 13.5cm high £200 - £400



668

## BRITISH CERAMICS

673. F Howard for Coalport, a pair of floral painted serving plates, twin handled square section, the central bouquet within a gilt foliate cartouche, cobalt blue ground with further vignettes of sprays, 26.5cm long  
£40 - £70



674

674. A Coalport jewelled cup and saucer, the fluted cup gilded and enamelled with turquoise and raised gilt dots throughout, saucer 8cm diameter  
£100 - £150

675. R Sebright, for Royal Worcester retailed through Asprey's, a tall comport, circa 1938, painted with fallen fruit on mossy bank, deep red border with enamelled jewelling, signed, puce printed marks, 22cm diameter  
£100 - £150

676. Richard Sebright for Royal Worcester, four fruit painted plates, three with roundels within a cobalt and raised gilt ground, with pink cartouches to the border, 22.5cm diameter (4)  
£100 - £150



677

677. James Hadley for Royal Worcester, a Shot enamels Anglo American figure group, circa 1897, modelled as John Bull and Uncle Sam shaking hands over the Atlantic Ocean, highlighted and dusted in gilt, puce marks, model 2011, 20cm high  
£100 - £150

678. Kitty Blake for Royal Worcester, a rose painted vase and a blackberry painted bowl, 1917 and 1928, shouldered ovoid and rounded forms, highlighted in gilt, grey and puce marks, signed, 10.5cm high and 18cm diameter (2)  
£80 - £120



679

679. James Stinton for Royal Worcester, a painted bowl, 1916, rounded with everted serpentine rim, decorated with pheasants to the interior and exterior, gilt rim and foot, signed, 20cm diameter  
£80 - £120

680. Charles Beresford Hopkins for Royal Doulton, a pair of painted vases, each decorated with cows in fields, between raised speckled gilt and foliate borders, signed, 20.5cm high  
£100 - £200

681. A Royal Worcester fruit painted pot and cover together with a rose painted panel vase, the vase of twin handled urn form, powder blue ground and tooled gilt cartouches, 14cm high (2)  
£40 - £60

682. Two Royal Worcester rose painted dishes, together with two others, one signed M Hunt, another with a marine scene with yacht, 10cm diameter (4)  
£40 - £60

683. William Powell, a collection of bird painted plates and dishes, each painted with a different specimen, including two small gilt rimmed dishes, bucket form bowl and two plates, signed, 12cm diameter (5)  
£50 - £80

684. William Powell for Royal Worcester, a set of five bird painted plates, circa 1916 to 18, each with a different specimen, Gold Finch, Robin, Wren, Blue tit and Wagtail, within relief moulded and gilded feather edged borders, 13cm diameter (5)  
£60 - £80





685

685. R Sebright for Royal Worcester, a fruit painted gold mounted brooch, 1916, circular, together with a bird painted oval brooch, 5.5cm diameter (2) £50 - £80

686. A Royal Doulton twin handled vase, footed baluster bottle form, decorated with poppies, highlighted in raised gilt on a foliate scroll cobalt blue ground, 25cm high £40 - £70

687. R Midwinter for Doulton Burslem, a blue and white painted twin handled vase, square section conical form, decorated with daisies and poppies, signed, 19.5cm high £40 - £70

688. Leslie Johnson for Royal Doulton, a painted portrait brooch, mounted in silver, together with a rectangular miniature framed portrait, each depicting an 18th century woman, signed, 5cm x 4cm (2) £70 - £100

689. Jack Price for Royal Doulton, an over painted vase, shouldered ovoid form, decorated in the round with a garden in bloom, printed marks, signed, 15cm high £30 - £50

690. Two Royal Doulton twin handled rose painted vases, signed P Curnock and E Wood, each with raised gilt decoration, 25.5cm high (2) £40 - £70

691. S Hughes for Doulton Burslem, a blue and white painted jug, footed conical form with elongated lip, decorated with roses, gilt foliate scroll handle, signed, 28cm high £50 - £80

692. E Wood for Royal Doulton, a floral painted twin handled vase, footed ovoid form with denticulated rim, the central cartouche decorated with a bouquet of flowers, within raised beaded gilt bands and a cobalt blue ground, C scroll handles and bracket foot, signed, 14cm high £40 - £70

693. A Dix for Royal Doulton, a painted vase, shouldered tapered cylindrical form, decorated with a chiffon clad Classical woman, the reverse with flaming torches, wreath and roses, signed, 23.5cm high £70 - £100



694

694. Leslie Johnson for Royal Doulton, a painted vase, shouldered form, decorated with a woman in a field of roses, tooled gilt rim, signed Arthur Leslie, 21.5cm high £100 - £150

695. Reg Johnson for Royal Doulton, a coffee cup and saucer, painted with kingfishers on yellow ground, gilt interior and handle, H1972, saucer 11cm diameter £30 - £50

696. Cuthbert Gresley for Royal Crown Derby, a floral painted pedestal vase, 1919, Campana urn form, decorated with bouquets within gilt foliate cartouches on cobalt blue ground, beaded to the rim and foot, signed, 13cm high £60 - £100

697. W E J Dean for Royal Crown Derby, a scene painted pot and cover, 1919, waisted form with four spouts and central hole to the lid, decorated with a bridge and castle, within beaded gilt shield cartouche, on a gilt leaf and cobalt blue ground, signed, 8.5cm high £60 - £100

698. A collection of Belleek tea ware, including Hexagon cups, Leaf plates, one painted with shamrocks, green tinted Neptune cups and saucer, four Tridacna coffee cups and a first period Institute ware shell moulded cup and saucer (14) £40 - £60

699. A collection of Belleek including first period lustre swan jug, first period Florence jug, second period twin handled Panel vase and a second period crested shell jug for the City of Dublin, Florence jug 16.5cm high (4) £40 - £70



700

**700. A large Royal Doulton figure of a lion**, HN1085, modelled striding, 34cm long  
£40 - £60



701

**701. A Royal Doulton figure Seated Alsatian**, HN921, painted in natural colours, 21cm high  
£30 - £50

**702. Charles Dana Gibson for Royal Doulton, five blue and white Gibson Girl plates**, circa 1902, transfer printed with portrait busts within art Nouveau style ribbon and heart borders, 23.5cm diameter (5)  
£100 - £150

**703. Charles Noke for Royal Doulton, a Kingsware mug**, decorated in relief with a man smoking, the reverse with slip motto drink wisely, printed mark, 13.5cm high  
£50 - £70

**704. Bates, Brown-Westhead Moore & Co, a Parian bust of a Renaissance woman**, circa 1860, marked B,BW,&M on reverse 25cm high  
£70 - £100

**705. Five Robinson and Leadbeater parian figures**, including Napoleon, Beethoven, Apollo and Queen Victoria, stamped marks, 26.5cm high (5)  
£80 - £120



706

**706. A pair of Wedgwood Jasperware candlesticks**, circa 1903, white on blue, blade knopped with beading, Classical figures and a band of acanthus scrolls, impressed Wedgwood England, 11cm high  
£50 - £80

**707. A Wedgwood Jasperware box and cover**, circa 1800, rounded pellet form, Aurora with chariot, within an oak leaf and acorn wreath, impressed mark Wedgwood, 10cm long  
£40 - £70



708

**708. A Liverpool porcelain jug**, circa 1770, baluster form with sparrow beak and foliate handle, polychrome decorated with Oriental figures in a garden, 10cm high

Provenance: Northern Ceramics Society Exhibition, Liverpool 1993, paper label, number 137  
£40 - £70

**709. A Staffordshire pearlware bust of Shakespeare**, circa 1840, on marbled pedestal, 29cm high  
£40 - £70



709



710

**710. A Staffordshire pearlware figure of a dog**, modelled sitting on a cushion and plinth, 18cm high  
£40 - £70

**711. A Victorian parian gilt figure group of a boy and girl tending rabbits**, modelled sitting on rocks on plinth base, 28cm high  
£40 - £60

**712. A set of four Wedgwood botanical flow blue transfer printed graduated jugs / pitchers**, each jug / pitcher is brightly decorated with an orange ground, and each with a different flower print and blue decorated internal borders and handles, impressed Wedgwood mark to bases along with a 3-digit manufacturer code (indistinct), 5 and 6 inches high (4)  
£100 - £200

**713. A Davenport blue and white part dinner service**, Chinoiserie Ruins, circa 1820, including dessert dishes, tureen, platters, pickle dish, plates, pedestal compot etc. (q)  
£100 - £200



---

## JOIN US FOR OUR NEXT AUCTIONS

---

### FRENCH GLASS

2ND JULY 2021

Consignments invited



Rene Lalique, Renard glass car mascot  
Estimate: £80,000 - £120,000

### JEWELLERY AND WATCHES

18TH JUNE 2021

Consignments invited



Chopard LUC Lunar watch  
Sold for £7,600

John Smart, portrait miniature  
Sold for £15,500



Fancy yellow diamond ring  
Sold for £4,600



## TERMS & CONDITIONS OF SALE AND BUSINESS

These Conditions of Sale and Business constitute the contract between Kinghams Auctioneers limited and the seller, on the one hand, and the buyer on the other. By bidding at the auction, and/or consigning to Kinghams Auctioneers limited, you agree to be bound by the following terms.

### CONDITIONS OF SALE

#### 1. DEFINITION

In these terms of business: Kinghams Auctioneers Ltd is referred to as 'Kinghams'. The Kinghams representative conducting the auction is referred to as the 'auctioneer'.

#### 2. AGENCY

The auctioneer normally acts as agent only and disclaims any responsibility for default by sellers or buyers if the transaction is not completed and paid for.

#### 3. TERMS OF SALE

The seller acknowledges that lots are sold subject to the stipulations of these Conditions in their entirety and on the Terms of Consignment.

#### 4. DESCRIPTIONS AND CONDITION OF LOTS

Every effort is made to ensure the accuracy of statements relating to authorship, descriptions, origin, date, age, provenance and condition of lots. Statements made orally or in the catalogue are opinions given after careful consideration and research. Prospective buyers are given ample opportunity to view lots before any sale. When bidding, buyers acknowledge that they are fully satisfied as to the description and condition of the lot.

#### 5. ATTRIBUTION OF PICTURES

(a) If the forename(s) (or asterisks where not known) and surname of the artist are given, this indicates that in the opinion of Kinghams the picture is a work by the named artist.

(b) If the initials of the forename(s) and the surname of the artist are given, this indicates that in the opinion of Kinghams the picture is a work of the period of the named artist and may be wholly or in part his work.

(c) If the surname of the artist is given, this indicates that in the opinion of Kinghams the picture is a work of the same school of the named artist, or by one of his followers, or in his style and of uncertain date.

(d) The term 'Bears signature' indicates that in the opinion of Kinghams this is not the signature of the artist.

(e) All other terms are self-explanatory.

#### 6. FORGERIES

Notwithstanding Condition 4, any lot which proves to be a deliberate forgery may be returned to us by you within 21 days of the auction provided it is in the same condition as when bought, and is accompanied by particulars identifying it from the relevant catalogue description and a written statement of defects. If we are satisfied from the evidence provided that the lot is a deliberate forgery we shall refund the money paid by you for the lot including any buyer's premium.

#### 7. THIRD PARTY LIABILITY

Every person on Kinghams premises before, during or after a sale shall be deemed to be there at their own risk and shall have no claim against Kinghams in respect of any injury they may sustain or any accident which may occur.

#### 8. DISPUTES

Any dispute not covered in these terms of business will be settled at the sole discretion of Kinghams.

#### 9. GENERAL

We shall have the right at our discretion, to refuse admission to our premises or attendance at our auctions by any person.

a) Any right to compensation for losses liabilities and expenses incurred in respect of and as a result of any breach of the Conditions and any exclusions provided by them shall be available to the seller and/or the auctioneer as appropriate.

b) Such rights and exclusions shall extend to and be deemed to be for the benefit of employees and agents of the seller and/or the auctioneer who may themselves enforce them.

Any notice to any buyer, seller, bidder or viewer may be given by first class mail or email in which case it shall be deemed to have been received by the addressee 48 hours after posting.

Special terms may be used in catalogue descriptions of particular classes of terms in which case the descriptions must be interpreted in accordance with any glossary appearing at the commencement of the catalogue.

Any indulgence extended to bidders, buyers or sellers by us notwithstanding the strict terms of the Conditions or of the Terms of Consignment shall affect the position at the relevant time only and in respect of that particular concession only; in all other respects these Conditions shall be construed as having full force and effect.

English law applies to the interpretation of these Conditions.

### TERMS OF CONSIGNMENT FOR SELLERS

#### 1. INTERPRETATION

In these Terms the words 'you', 'yours', etc. refer to the Seller and if the consignment of goods to us is made by an agent we assume that the Seller has authorised the consignment and that the consignor has the Seller's authority to contract. Similarly the words 'we', 'us' etc. refer to Kinghams Auctioneers Ltd.

#### 2. WARRANTY

The Seller warrants that possession in the lots can be transferred to the Buyer with good and marketable title, free from any third party right and encumbrances, claims or potential claims. The Seller has provided all information concerning the items ownership, condition and provenance, attribution, authenticity, import or export history and of any concerns expressed by third parties concerning the same.

#### 3. COMMISSION

Commission is charged to sellers at a flat rate of 15% plus VAT on each lot. There is a lotting charge of £2.50 plus VAT per lot.

#### 4. REMOVAL COSTS

Items for sale must be consigned to the saleroom by and stated deadline and at your expense. We may be able to assist you with this process but any liability incurred to a carrier for haulage charges is solely your responsibility.

#### 5. LOSS AND DAMAGE OF GOODS

a) Loss and Damage Warranty – Kinghams is not authorised by the FSA to provide insurance to its clients and does not do so. However, Kinghams for its own protection, assumes liability for property consigned to it at the lower pre-sale estimate until the hammer falls. To justify accepting liability, Kinghams makes a charge of 1.5% of the hammer price plus VAT. The liability assumed by Kinghams shall be limited to the lower pre-sale estimate or the hammer price if the lot is sold.

b) If the owner of the goods consigned instructs us in writing not to take such action, the goods then remain entirely at the owners risk unless and until the property in them passes to the Buyer or they are collected by or on behalf of the owner, and clause 5(a) is inapplicable.

#### 6. ILLUSTRATIONS

The cost of any illustrations is borne by you. If we consider that the lot should be illustrated your permission will be asked first. The copyright in respect of such illustrations shall be the property of us, the auctioneers, as is the text of the catalogue.

#### 7. MINIMUM BIDS AND OUR DISCRETION

Goods will normally be offered subject to a reserve agreed between us before the sale in accordance with clause 8. We may sell lots below the reserve provided if we can account to you for the same sale proceeds as you would have received had the reserve been the hammer price. If you specifically give us a "discretion" we may accept a bid of up to 10% below the formal reserve.



## 8. RESERVES

- a) You are entitled to place prior to the auction a reserve on any lot consigned, being the minimum hammer price at which that lot may be sold. Reserves must be reasonable and we may decline to offer goods which in our opinion would be subject to unreasonably high reserves {in which case goods carry the storage (Condition 17) and loss damage warranty (Condition 5(a) charges as stipulated in these Terms of Consignment}.
- b) A reserve once set cannot be changed except with our consent.
- c) Where a reserve has been placed only we may bid on your behalf and only up to the reserve (if any) and you may in no circumstances bid personally.
- d) Reserves are not usually accepted for lots expected to realise below £50.

## 9. ELECTRICAL ITEMS

These are subject to detailed statutory safety controls. Where such items are accepted for sale you accept responsibility for the cost of testing by external contractors. Goods not certified as safe by an electrician (unless antiques) will not be accepted for sale. They must be removed at your expense on your being notified. We reserve the right to dispose of unsafe goods as refuse, at your expense.

## 10. SOFT FURNISHINGS

The sale of soft furnishings is strictly regulated by statute law in the interests of fire safety. Goods found to infringe safety regulations will not be offered and must be removed at your expense. We reserve the right to dispose of unsafe goods as refuse, at your expense. The rights of disposal referred to in clauses 9 and 10 are subject to the provisions of The Torts (Interference with Goods) Act 1977, Schedule 1, a copy of which is available for inspection upon request.

## 11. DESCRIPTIONS

Please assist us with accurate information as to the provenance etc. of goods where this is relevant. There is strict liability for the accuracy of descriptions under modern consumer legislation and in some circumstances responsibility lies with sellers if inaccuracies occur. We will assume that you have approved the catalogue description of your lots unless informed to the contrary. Where we are obliged to return the price to the buyer when the lot is a deliberate forgery under Condition 4 of the Conditions of Sale and we have accounted to you for the proceeds of sale you agree to reimburse us the sale proceeds.

## 12. UNSOLD ITEMS

If an item is unsold it may at our discretion be re-offered at a future sale. Where in our opinion an item is unsaleable you must collect such items from the saleroom promptly on being so informed. Otherwise, storage charges may be incurred.

## 13. WITHDRAWN AND BOUGHT IN ITEMS

These are liable to incur charges on being bought in or withdrawn after being catalogued.

## 14. CONDITIONS OF SALE

You agree that all goods will be sold subject to our Conditions of Sale. In particular you undertake that you have the right to sell the goods either as owner or agent for the owner. You undertake to compensate us and any buyer or third party for all losses, liabilities and expenses incurred in respect of and as a result of any breach of this undertaking.

## 15. AUTHORITY TO DEDUCT COMMISSION AND EXPENSES AND RETAIN PREMIUM AND INTEREST

You authorise us to deduct commission at the stated rate and all expenses incurred from your account from the hammer price and consent to our right to retain beneficially the premium paid by the buyer in accordance with our Conditions of Sale and any interest earned on the sale proceeds until the date of settlement. You authorise us at our discretion to negotiate a sale by private treaty not later than the close of business 48 hours after the day of sale in the case of lots unsold at auction, in which case the same charges will be payable as if such lots had been sold at auction and so far as appropriate these Terms apply.

## 17. STORAGE

We disclaim all liability for goods delivered to our saleroom without sufficient sale instructions and reserve the right to make storage charges.

## 18. SETTLEMENT

Subject to funds having cleared in our account we aim to pay you no later than four weeks following the sale. If the buyer has not paid for the goods no settlement will be made but we will take your instructions in the light of our Conditions of Sale. You authorise any sums owed by you to us on other transactions to be deducted from the sale proceeds. Please note the liability to reimburse the proceeds of sale to us as under the circumstances provided for in Condition 11 above and you should therefore bear this in mind before parting with the proceeds of sale.

## INFORMATION FOR BUYERS

### 1. INTRODUCTION

The following notes are intended to assist buyers particularly those who may be inexperienced or new to our saleroom. All sales are conducted in accordance with our Conditions of Sale. Our staff will be happy to help you with anything you do not fully understand.

### 2. AGENCY

As auctioneers we usually contract as agents for the seller whose identity, for reasons of confidentiality, is not normally disclosed. Accordingly, if you buy your primary contract is with the seller.

### 3. THE BUYER

The highest bidder acknowledged as such by the auctioneer will be the buyer. If any dispute arises, the auctioneer has absolute discretion to settle the matter. The auctioneer rules the bidding and bids cannot be retracted. The auctioneer reserves the right to refuse any bid.

The successful bidder, whether bidding for himself or for a third party, is entirely responsible for paying for the lots they have bought in accordance with Kinghams's Conditions of Sale and Business. The auctioneer reserves the right to bid on behalf of the sellers for any lot and to withdraw, consolidate or divide any lot or lots.

### 4. REGISTRATION

Unless registered already on a bidding platform, it is essential that all prospective buyers register with us, giving their full name, address, contact telephone number(s) and email address. First time buyers will be required to provide proof of identity (i.e. driving licence/passport), a valid debit or credit card and a copy of a utility bill confirming their name and address. Upon receipt of the above a paddle will be issued, which is only valid for the current sale. The paddle may be used to indicate your bids to the Auctioneer during the sale. If successful, the bidder must ensure that their number can be seen by the Auctioneer and that it is their number that is called out. Should there be any doubts as to price or buyer, please draw the Auctioneer's attention to it immediately.

### 5. BUYER'S PREMIUM - COMMISSION CHARGES

There is a buyer's premium of 23 per cent plus VAT on the hammer price of each lot up to and including £200,000. The buyer's premium is 18% plus VAT on the hammer price of each lot on the excess of £200,001 up to and including £1,000,000. The buyer's premium is 15% plus VAT on the hammer price of each lot on the excess of £1,000,001.

### 6. VALUE ADDED TAX

Lots on which the buyer may have to pay VAT on the 'hammer price' are indicated in the catalogue with the following symbol \*. The buyer must pay this VAT at the rates that apply on the day of the auction in addition to the buyer's premium and VAT thereon.

### 7. AUCTIONEERS MARGIN SCHEME

This scheme allows auctioneers to sell items without VAT on the hammer price. The buyer then pays an amount equivalent to VAT. This amount cannot be refunded and is not shown separately on the invoice.

### 8. PAYMENT

Buyers must pay in full before items can be removed from the premises (please see "payment methods" below).

Invoices will be issued from the day of the sale. Buyers must pay their invoice in full within 24 hours and advise when they will be collecting their item(s). Any invoices which remain unpaid after seven days will incur interest at 5% above the base rate, charged from the date of the sale. If buyers are unknown to us, we cannot hand over purchases unless we have adequate references or payment is cleared.

#### Payment Methods

We accept payment by:

Cash – up to £9,000 (subject to money laundering regulations).

Cheques – bankers draft, cashiers cheque, personal cheques and travellers cheques are all accepted.

Credit cards – Visa or Mastercard (American Express or Diners Club not accepted).

Debit cards – Visa, Delta, Switch, Connect

Please note that we are unable to accept any card payments where the cardholder is not present.

Bank transfer to:

HSBC Bank, Bridge St, Evesham WR11 4RU

Account no.: 51655345

Account name: Kinghams Auctioneers Ltd

Sort code: 40-20-27

IBAN: GB91MIDL40202751655345

SWIFTBIC: MIDLGB22

Please note that a fee of £15 will be added for international bank payment.

#### 9. LIVE INTERNET BIDDING

Live online auctions are in conjunction with the-saleroom.com, invaluable.com and easyliveauction.com

We ask that you register for the sale a minimum of 24 hours before the auction.

When you have registered, you can watch the auction in real time; simply click the bid button to place a bid.

If your bid is successful we will notify you after the sale for payment. Charges will be made for internet bidding dependent on the auction platform. See their terms and conditions for details.

#### 10. TRANSFER OF RISK

Each lot is the buyer's sole responsibility from the fall of the hammer.

#### 11. COMMISSION BIDS

If instructed, Kinghams will execute bids and advise prospective buyers. This service is free.

Buyers who cannot come to a sale may leave their bid with our staff after/during viewing, or make their bid in advance by telephone or email (enquiries@kinghamandormeauauctioneers.com). Such bids are placed at the buyer's own risk.

Bids must be made at least one hour before the sale starts, but we advise buyers to make bids at the earliest possible opportunity. When making bids, buyers must provide:

Their full name

Address

Email address

Contact telephone numbers

The number of the lot they wish to buy

Their maximum bid amount – excluding commission which will be added to the invoice afterwards

Buyers must state what their maximum bid would be. We cannot accept an instruction to 'buy' or unlimited bid.

We will ensure that lots are bought as cheaply as possible depending on the bids made and other reserves. If identical bids are placed, they will be dealt with on a "first come first served" basis.

#### 12. TELEPHONE BIDS

Lines for telephone bidding should be booked 24 hours before the auction. Lines are booked on a "first come first served basis." Full name, address and telephone numbers will be required together with proof of identity and address. Bank and credit/debit card details are also necessary to secure the line.

#### 13. DATA PROTECTION

Kinghams will use information provided by its clients or obtained by Kinghams relating to its clients for the provision of auction services or as required by law. Kinghams may need to record telephone conversations for security or legal reasons or as necessary to provide a higher quality of service. Clients agree that Kinghams may use sensitive information that they supply to Kinghams. Unless permitted by law, Kinghams will not otherwise process sensitive personal data without express consent. By agreeing to the Conditions of Sale and Business, clients agree to the processing of their personal information.

#### 14. STORAGE AND COLLECTION

Please note all items after the auction will be removed to store. Arrangements for collection can be made with the office.

#### 15. ELECTRICAL GOODS AND SOFT FURNISHINGS

These are sold as 'antiques' only and if bought for use must be checked over for compliance with safety regulations.

#### 16. EXPORT OF GOODS

Buyers intending to export goods should check whether an export licence is required and whether there is any specific prohibition on importing goods of that character because e.g. they may contain prohibited materials such as ivory. Ask us if you need help.

#### 17. PACKING AND DESPATCH

We offer a packing and despatch service for smaller lots. We also use national and local carriers. Further details can be obtained from our office.

#### 18. DROIT DE SUITE ROYALTY CHARGES

A work of art by a living artist, or those who have died within the last 70 years, which costs more than the UK sterling equivalent of €1,000 will incur a royalty charge. We pass this payment onto the Design and Artists Copyright Society (DACS), and do not charge a handling fee. Buyers can calculate royalty charges on the DACS website.

Items marked with the † symbol in the catalogue will potentially incur royalty payments.

We use the euro to UK sterling exchange rate which applies on the day of the sale. It is the buyer's responsibility to check the relevant exchange rate.

The actual qualifying threshold is calculated by the Artist's Resale Right Service Hub based on the European Central Bank reference rate published at 2.15pm on the day of the sale, and can be found on the DACS website.

The royalty charge for pictures which achieve a hammer price of more than the UK sterling equivalent of €1,000, but less than the UK sterling equivalent of €50,000 is 4%. On works of art that achieve a hammer price of more than the UK sterling equivalent of €50,000 a sliding scale of royalty charges applies. For a complete list of the royalty charges and threshold levels please download more information from the DACS website.

The royalty charge is added to invoices, and must be paid before purchases are removed. VAT is not paid on royalty charges.

#### 19. CITES LICENSE - IMPORTANT NOTICE RELATING TO SPORTING AND NATURAL HISTORY

Clients intending to import/export any item derived from natural history specimens into/from a non-European country should first check for any Import/Export and possession restrictions prior to bidding/selling.

Certain species (λ) are also subject to CITES regulations when exporting/importing these items out of the EU. CITES regulations are given on [www.ukcites.gov.uk](http://www.ukcites.gov.uk) or maybe obtained from Animal Health, Wildlife Licensing and Registration Service, Zone 1/17, Temple Quay House, 2 The Square, Bristol BS1 6EB. Those species that are covered by the US Endangered Species Act (USES) or The Migratory Bird Treaty Act (MBTA): potential US bidders should check with USF&W (US Fish and Wildlife Services) for trade/possession restrictions in the US prior to bidding.



KINGHAMS

AUCTIONEERS • VALUERS









KINGHAMS

AUCTIONEERS • VALUERS

## CONTACT US

KINGHAMS AUCTIONEERS

CALL ON 01608 695695

OR EMAIL [enquiries@kinghamsauctioneers.com](mailto:enquiries@kinghamsauctioneers.com)

---

[WWW.KINGHAMSAUCTIONEERS.COM](http://WWW.KINGHAMSAUCTIONEERS.COM)

