

The Garden's Gate

from the South Carolina Botanical Garden

January - April 2018

Inside this issue

Page 2

Director's Note

Page 3

Garden News

Page 4

Special Events

Page 5

The Geological Record

Pages 6 - 9

Calendar: Classes and Events

Page 10

Meet the Garden Board

Page 11

Friends and GeMs

Page 12

Plants for the 21st Century



Spring Plant Sales

April 13,
2 p.m. - 6 p.m.

Friend's Sale

Bring a friend to become a friend!

April 14
9 a.m. - 1 p.m.
Public Sale

April 28
Second Chance Plant Sale
9 a.m. - 1 p.m.



Your Ever-Evolving Garden

The South Carolina Botanical Garden is constantly evolving, driven by the inspiration of the staff, the wonderful financial support of our Friends, and the hard work of our horticultural staff. Our latest addition to the SCBG landscape is the J. Dabney Peeples Jurassic Garden, nestled on the hill between the Bob Campbell Geology Museum and the Fran Hanson Visitor's Center. Talented landscape architect J. Dabney Peeples gave the Garden this wonderful landscape design, the funds for it, and has been intimately involved in realizing this project. The Jurassic Garden transforms a plain hillside into a magical journey through geologic ages.



View of the J. Dabney Peeples Jurassic Garden

The path through the Jurassic Garden is lined with huge red boulders from the Triassic Pekin Formation, Paleozoic limestones and much older granite and gneiss, all designed to draw visitors onwards through the plants. Visitors will begin their journey in the Age of Gymnosperms (~ 310 - 130 million years ago), a lush Jurassic landscape dominated by large conifers, cycads, and ginkgo (plants with naked seeds), and an understory of ferns, club mosses, and equisetum (plants with spores). Dinosaurs roamed the Jurassic era and casts of their footprints, filled with water, will harbor aquatic ecosystems, just as they would have at the time. We plan to leave one footprint dry for photo opportunities!

As the visitor walks the Trail, they encounter Charles Darwin's "abominable mystery," a sudden explosion of flowering plants (angiosperm) about 130 million years ago. Today, scientists continue to work on understanding the rapid evolution and subsequent spread of angiosperms across the world.

At the heart of the "abominable mystery" are a group of plants collectively known as the ANITA grade, plants which we also feature in the Jurassic Garden. This small group of plants are viewed by scientists as early experiments in flower development. The *Illicium* genus number among this group, to which our native Florida Anise, *Illicium floridanum* belongs. A second group of ANITA grade plants, the water lily family, will be housed a beautiful pond transected by a rock path (see right).



Magnolia and limestone



The rock path through the pond.

Anchoring the top end of the trail are several Magnolia species. This ancient genus dates back to 95 million years ago in the fossil record. However, scientists posit that an ancestral flower of all living angiosperms, which likely existed 140 - 250 million years ago, very much looked like a Magnolia and shared many of the same traits. From this beginning, angiosperms proved so successful they now comprise the vast majority of the world's plant species.

The addition of this unique garden integrates the Bob Campbell Geology into the SCBG landscape and provides a wonderful educational experience for our visitors.

Director's Note



Patrick McMillan

Winter is a great time to visit the SC Botanical Garden! We are blessed to live in a climate where you can enjoy flowers year-round. Just as the grey of winter settles across most of the landscape, the Giant Snowdrops in the Xeriscape Garden are turning the hillside white with charming little bells. Autumn crocus are popping up here and there, Lemmon's Marigold continues to shine, and the Camellia collection is just beginning its six month flowering period. Winter birds have returned and the entire Garden is transformed. It isn't a time of less activity for life here, just different activity. Bring your family and friends and enjoy the winter wonders of your Garden.

Winter is also a great time for reflection on the year's end. What a year it has been! You'll see major progress on the J. Dabney Peebles Jurassic Garden, it will officially open in the spring, the oak collection (Quercetum) has been planted, the McBride Aquatic Garden and the Susan K. Barr Pollinator Garden are moving into construction this coming winter and spring. This year saw the completion of all the exhibits along the Natural Heritage Garden Trail, the completion of the Hanover House landscaping, the completion and opening of the new grand entrance and major progress towards our goal for the Children's Garden.

The Children's Garden Treehouse (right) is very close to having the funds in place.

To see this transformative experience become a reality on the ground we need your

help. Just over \$200,000 is needed to meet the \$1,000,000 goal and begin construction. Every dollar counts and every gift is extremely appreciated by us and by the thousands of families who will enjoy this incredible structure.



Our staff is also changing. I hope you will welcome our new Nursery Manager, Misty Shealy, to the staff. Misty brings a wealth of knowledge and management skills to this incredibly important position. We are very fortunate to have her on staff. We also have a new Arboretum Manager, Dave Rife, who joined us from the Atlanta Botanical Garden. He has many years experience in the horticultural world, and he was senior horticulturalist at the ABG for seven years.



John Bodiford

Lastly, and most importantly for me, I would like to recognize a very special man, the heart of this Garden, Mr. John Bodiford. Almost anyone who has spent any time in the SCBG, or been involved in anything we do here, has come into contact with our Garden Manager. Your experience has probably been much like mine. Even on the worst of days, and in the worst of situations, this man has a smile on his face, an optimistic outlook, and brings light and joy into all of our hearts. He is among the greatest ambassadors the SCBG could imagine and respected by all. He has served you with incomparable dedication for 32 years and, come the summer of 2018, he will officially retire. If you have had the experience of meeting or knowing John over these decades he has served us, please take the time to thank him, to acknowledge, like I do, how eternally grateful and lucky we are to have him here, leaving an indelible and positive mark on the Garden and our lives. Thank you, John.

~ Patrick

Garden Staff

Patrick McMillan
Garden Director

Shannon Barrett
Landscape Architect

John Bodiford
Garden Manager

Kathy Bridges
Landscape Manager

Allison Jones
Education Program Coordinator

Allison Kelly
Natural Heritage Garden Manager

Trenton Miller
Collections Manager

Angel Perkins
Business Manager

David Rife
Arboretum Manager

Misty Shealy
Nursery Manager

Adam Smith
Curator, Geology Museum

Rebecca Samples Smith
Garden Educator

Kendra Vincent
Garden Educator

Spencer Waldrop
Facilities Manager

Sue Watts
Education Program Coordinator

James Wilkins
Education & Resource Coordinator CEF/SCBG

The Garden Gate is printed courtesy of
CU/PSA Publications
Production: Sue Watts
watts9@clemson.edu



150 Discovery Lane, Clemson University
Clemson, SC 29634-0174
phone: 864.656.3405
email: scbg@clemson.edu
www.clemson.edu/scbg

What a fall! The colors have been spectacular, and since our first frost came very late in November, fall bloomers gave us an amazing show. We have planted over a thousand bulbs, many of which will be blooming through the winter months. Keep your eyes peeled for these winter beauties as you wander the garden.



November was the month for volunteers. We had a great time at our volunteer luncheon. Thanks to all the staff for bringing food to feed everyone and thanks again to all of our volunteers, and we couldn't do it without you. Community service from students on campus was great. We had close to 900 hours of student volunteer labor through the Garden, mulching,

weeding, pulling invasives, fall cleanup, and moving rocks to name a few tasks. All very frustrating (organization-wise) but a very productive month! Thank you all for your support and love of the Garden.

~ Kathy Bridges, Landscape Manager



Thanks to long-time volunteer Bob Healy, we have some new additions to the Children's Garden. Mr. Healy crafted some beautiful play tables and a set of wooden blocks for the hoop house. Kathy Bridges filled the tables with shells, pine cones, sticks and more. We want children to be able to tap into their imaginations and use this space for creativity and play. We hope to add a stage area

and shade cloths in the spring.

In the "Food For Thought Garden" we are stepping up our educational message with seasonal informational signs. Did you know that broccoli has been enjoyed by Italians for 2000 years, and that Thomas Jefferson was the first person to grow broccoli in America? For more fun and informative veggie facts visit the "Food For Thought Garden" frequently.



The "Peter Rabbit Garden" is also receiving an overhaul and returning to its original mission. The Garden Sprouts will garden in the space, raise vegetables and flowers, and learn more about Peter Rabbit and his friends. In the spring, we are planning a Peter Rabbit Festival for families on Sunday, April 29th. Check our online calendar for more details.

Gift Shop

Our gift shop has special gifts of all kinds. Visit frequently to see our changing items. We are now featuring some great gardening books too!

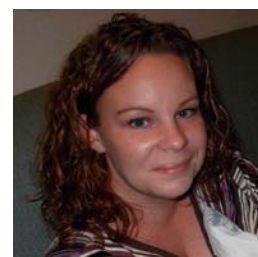


Hours: Monday - Sunday: 10 a.m. - 5 p.m.

Meet our new staff members



Dave Rife
Arboretum Manager



Misty Shealy
Nursery Manager



First Friday Walks with David Bradshaw

October - March 9 a.m.
April - September 7 a.m.

Each one is a unique adventure!
Meet at the Caboose Parking Area

Special Events

Winter Lecture Series



February 24

Marian St.Clair, Garden Writer

Making Good Gardens Gathering Ideas & Inspiration from All the Right Places.

Steve Bender, Southern Living Editor

The Grumpy Gardener: An A-Z Guide From the Galaxy's Most Irritable Green Thumb.

March 3

Kevin Parris, Arboretum Director, Spartanburg Community College

These Ain't Your Mama's Magnolias: Interspecific Hybridization of Magnolias.

Jon Fritz, Bluestem Landscape Design

Beyond the Bloom: Native Perennials for Form & Function.

March 10

Mark Weatherington, Director, J.C. Raulston Arboretum

Gardening in the South: The Complete Homeowner's Guide

Ted Stephens, Nurseries Caroliniana

Landscaping with Members of the Lily Family.

March 17

Rick Huffman, Earth Design

Understanding the Human Role on our Planet: Sustainability, Native Plants and Applied Ecology.

Joel Myers, Mushroom Mountain

Recycling and Composting with Mushrooms.

Hayden Conference Center, SCBG

8.30 a.m. - 12.30 p.m.

\$25/session ~ \$90/Series (10% discount members)

To register:

<https://www.clemson.edu/public/scbg/events/events-calendar.html>

For more information: watts9@clemson.edu or 864-656-2836

We are excited to offer Steve Bender's *The Grumpy Gardener* and Mark Weatherington's *Gardening in the South* at the SCBG Gift Shop. Buy a copy and a ticket to their lecture as a gift for yourself or a friend. Both authors will sign their books at their presentations.



SOUTH CAROLINA
BOTANICAL
GARDEN

at CLEMSON UNIVERSITY



Watch our website and Facebook page for upcoming dates!



Spring Concert Series
in the
Amphitheater
Fridays, 7 p.m. - 8 p.m.



Tuesdays Tunes & Tastings
on the
Lower Lawn, Visitor's Center
Tuesdays, 7 p.m. - 8 p.m.



We'd like to thank the following companies for partnering with us:

Palmetto Smokehouse and Oyster Bar provided food at our Fall Concert Series.

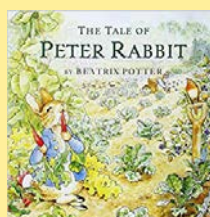


Carolina Bauernhaus provided ales, beer, cider, and more at our Fall Tuesdays Tunes and Tastings.

Garden Guided Tours

We are always excited to share the Garden with visitors. Guided tours are given by seasoned interpreters. Cost is \$4 per person, with a minimum fee of \$40 for an hour-long tour. Bring your church group, newcomer club, civic organization or friends to learn more about the history, current development, and future plans for the Garden. This is a fun way to support the Garden!

Contact Sue Watts at watts9@clemson.edu to schedule.



Sunday, April 29 Peter Rabbit Festival

Join us for a celebration of Peter Rabbit, and the author Beatrix Potter. Come and hop along from station to station through the Garden. Games, activities, and lots of family fun!

Check our calendar for more details!

EXCITING NEW EXHIBITS OPENED AT THE GEOLOGY MUSEUM



Figure 1. Although mammoths (left) and mastodons (right) were both roaming North America during the Pleistocene Epoch of Earth History (~2.5 million – 12,000 years ago), there are some anatomical differences. In general, mammoths were larger, had more curved tusks and teeth shaped for grinding tough grasses (rather than leaves and twigs as in mastodons). Illustration: Wikimedia commons.

New exhibits continue to greet guests at the Bob Campbell Geology Museum. Recently added displays on Woolly Mammoths and Hominid Evolution have received numerous compliments from recent visitors to the museum. The display on Woolly Mammoths (*Mammuthus primigenius*) has been especially popular with younger visitors and features a collection of fossils from the Pleistocene of Alaska that were collected in the 1940's by Army Colonel and Clemson alum G.R. Tyler (see figure 1). The display also includes a 7 foot-long tusk of a juvenile female mammoth. Visit the BCGM soon to learn more about these and other Ice Age Beasts like Saber-toothed Cats, Giant Ground Sloths, and Terror Birds!

The new display on Hominid Evolution features the bones and stone tools of 12 species of human ancestors, some dating back more than 5 million years! This exhibit is being constructed in collaboration with Clemson University Sociology, Anthropology, and Criminal Justice Department Interim Chair, K. Weisensee and undergraduate anthropology student and museum assistant C. Martinson, and is slated to be expanded in the near future to include information regarding cognitive and locomotive evolution. Many visitors have been intrigued to learn about *Homo floresiensis*, a recently extinct hominid that disappeared from the Indonesian Island of Flores only around 50,000 years ago, and that has been dubbed “the hobbit” because of its small size (only ~3.5 ft. tall; see figure 2). Curator Dr. Adam Smith said that “the new display will not only interest the public, but provides much-needed educational content for undergraduate biological anthropology laboratories that visit the museum every year”.



Figure 2. The skull of the “hobbit” (right) is considerably smaller than that of modern humans (left; photo by N.A. Smith)



Figure 3. (photos courtesy of M. Casselman).

The Bob Campbell Geology Museum is proud to announce that a meteorite that fell on a house in Pawleys Island, SC on Sept. 26th of this year (fig. 3) has been donated to the museum by its discoverer Melanie Casselman, and will soon be on display in the Benson Gallery! The space-rock was first identified by professors from the Clemson University Department of Physics and Astronomy and additional tests to categorize and potentially discover the age and origin of the meteorite will be undertaken by Curator, Dr. Adam Smith, who had this to say about the meteorite—“We are very excited to be able to present to museum visitors, a documented, recently fallen, meteorite from SC! From the perspective of trying to display items that have potential to excite the minds of young would-be scientists, it really does not get any better than a rock from space that is possibly billions of years old”.

SHOP FOR UNIQUE HOLIDAY GIFTS AND HELP SUPPORT THE MUSEUM

The BCGM gift shop is now fully stocked and ready to provide unique holiday presents not available anywhere else in the Upstate! Please visit us and check out our new selection of natural stone jewelry, polished stone magnets and key chains and amazing mineral specimens. We also have a newly expanded selection of geology, tiger, and dinosaur-themed items including: t-shirts, hats, tote bags, coffee mugs and beer glasses. Finally, we offer a variety of educational books and toys that make perfect gifts for kids of all ages. You can feel good about purchasing items from our gift shop as 100% of the revenue is used to further our complementary goals of research and education.

The BCGM needs your help to meet our growing need for funds to support our ambitious research and educational efforts. Contact us at bcgm@clemson.edu to discuss the projects we have planned and how you can contribute. Also see our Facebook page and our website (www.clemson.edu/geomuseum) for details regarding upcoming special exhibits and events.

Classes



Lunch and Learn: Great Garden Know-How

Tap into the extensive knowledge of Clemson's Extension Service in this lunch and learn series. Bring a bag lunch and listen to learn from Clemson experts.

February 7

Mark Arena *Landscape Crimes: Unveiling 7 Common Urban Landscape Myths.*

February 21

Michelle Hall *Building a Small Poultry Flock.*

March 7

Paul Thompson *Correcting Structural Issues Early in a Tree's Life: A Demonstration.*

March 21

Barbara Smith *How to Plant a Succulent Container Garden.*

April 4

Andrew "Drew" Jeffers *Integrated Pest Management for the home garden.*

April 18

Jackie Jordan *Working with warm season grasses.*

May 2

Vicky Bertagnolli *Putting out the fire! Fire ant biology and management.*

May 16

Patricia Scharko, *Small Ruminants for the backyard.*

June 6

LayLa Burgess and Adair Hoover *Growing and using herbs.*

Location: Hayden Conference Center

Time: noon - 1 p.m.

Fee: \$7 per session



Thursdays, April

Lunch and Learn with Amanda Dilday
Creating a Backyard Herbal Medicine Garden

Amanda Dilday is a wife, mother, herbalist, and writer. She offers herbal classes and consultations to her community. In this lunch and learn she'll introduce medicinal plants you can grow in your own backyard. Preregister by

March 30th.

Location: Hayden Conference Center

Time: noon - 1 p.m.

Fee: \$40 for the series

Friday, January 19

Track Tricksters



Learn about the habits and adaptations that animals use to survive winter, and look for clues of animal activity in the Garden. Each participant will make their own animal track cast, and the session concludes with a game of winter wildlife bingo. Due to curing time, arrangements will be made for pick-up of casts. Register at least 3 days in advance.

Time: 3:30 p.m. - 5:30 p.m.

Fee: \$7

Friday, February 9

Chocolate: Seed to Sweet

Where does chocolate come from? Take a trip around the world to explore the answers to that question and more! We'll make delicious chocolate goodies and a craft to celebrate Valentine's Day. Register at least 3 days in advance.

Time: 3:30 p.m. - 5:30 p.m.

Fee: \$10



Friday, March 16

Eggs & Nests



Children will enjoy this unusual, nature-based art project. Use leaves, flowers and plant-derived egg dyes to decorate eggs. Learn how birds make nests for their young, look at real bird nests, and make your own 'bird nests' to take home.

Register at least 5 days in advance. *Time: 3:30 p.m. - 5:30 p.m.*

Fee: \$12

Friday, May 11

Bathtub Botany

Children can create a special gift for Mom or enjoy this project together! We will learn about amazing ways people have used plants throughout history. Make your own soap, salve and more, using plant materials to add scent, color, and soothing properties. Register at least 3 days in advance.

Time: 3:30 p.m. - 5:30 p.m.

Fee: \$10



Special Workshop

March 6, 13, 20

Mark Arena

The art and science of proper pruning. This three-part series will cover both the science and practical application of pruning. Participants will conduct hands-on pruning and need to bring their pruners in order to participate.

Time: 10 a.m. - 11 a.m.

Fee: \$30 for the series



Use our **ONLINE REGISTRATION SYSTEM** at www.clemson.edu/scbg to register.

Please preregister for all programs - call to check for last minute availability.

Nature Center Open House

February 3 **Celebrate the Groundhog!**

Famous as a weather prognosticator, the groundhog has become a cultural icon. Lots of hands-on family activities bring the groundhog's life into focus.

March 3 **Decomposition and decay**

Examine a rotting log, explore our compost pile and worm bin, and view the decomposers close-up. We are joined by Mike Ferro and Clemson's entomology club for this rotting good adventure.

April 7 **Spring Awakening!**

Take a walk in the Garden with our spring-themed scavenger hunt, look for migrating birds, and discover South Carolina's beautiful spring ephemerals. Enjoy some family-friendly spring-themed activities.

May 5 **Insect Discovery**

Discover more about the lifecycles and habits of bees, butterflies, beetles and more! Hands-on activities introduce young and old alike to the fabulous world of insects with the Clemson Entomology Club

Time: 10 a.m. - noon

Fee: free, \$5 suggested donation

Hunt Cabin Open House

February 3 **Germans in the Upstate**

In February, nineteenth century German settlers in the upstate may have celebrated Candlemas, an ancient European winter tradition. Enjoy some hot chocolate by the fire as we craft hand-dipped candles.

March 3 **Waiting out winter**

We look at some of the tasks that occupied Appalachian residents in the winter. Join chair caner, Dave Lindsay for a demonstration, and try your hand at chair caning. We'll have a fire, enjoy a winter time treat.

April 7 **Rites of spring!**

Take a self-guided walk down our Natural Heritage Trail to learn about medicinal plants people used in everyday life. Enjoy some sassafras tea, and a spoonful of molasses with sulphur, if you dare!

May 5 **Appalachian Games & Toys**

Play with our gee-gaw whimmydiddle, limberjack and graces. Use your imagination to make your own toys and games with materials provided.

Time: 1 p.m. - 4 p.m.

Fee: Free, \$5 donation per family suggested

- Unless otherwise noted, all programs meet in the Hanson Nature Learning Center in the basement of the Hayden Conference Center.
- The code for the Friends program discount is now: FRIENDS2018.
- Friends and volunteers receive a 10% discount on all programs.

CLEMSON

EXPERIMENTAL FOREST

Save the Date! April 7

Forest Fest

Clemson Experimental Forest Tours

Join us each month as we explore a different area of the 17,500-acre Clemson Experimental Forest (CEF). These fun and informal walks will expose you to a diversity of natural and cultural resources in the CEF. Meet educator James Wilkins (and special guests!) at a pre-determined location and carpool or follow us on the trail. The Forest never disappoints! Register online or by email at least 2 days in advance.



Saturday, January 13

Saturday, February 10

Saturday, March 10

Saturday, April 21

Location: TBD

Fee: \$7

Time: 9 a.m. - 11 a.m.

Full-Moon Hikes

Join naturalist James Wilkins and experience the sights, sounds and sensations of a full-moon night. Please wear shoes and clothing appropriate for walking in the woods. Flashlights are not needed. Register online or by email at least 1 day in advance.



Cold Moon - Wed., Jan. 31, 6 p.m. - 7:30 p.m.

Windy Moon - Thurs., Mar. 1, 6 p.m. - 7:30 p.m.

Flower Moon - Sun., Apr. 29, 7:45 p.m. - 9:15 p.m.

Planting Moon - Tues., May 29, 8:30 p.m. - 10 p.m.

Location: Discovery Center/Museum Parking Lot

Fee: \$7 family (up to 5)

Garden Creativity Programs



Saturday, January 27 **Crusty Bread, Flavored Butter**

Join local home baker Neil Calkin to learn how to create perfect bread every time. While the dough rises, you'll create flavorful butters! Register by Monday Jan. 22.

Time: 2 p.m. - 5 p.m.
Fee: \$30

Wednesday, February 21



Paper Blooms

Bring spring into your home early! Learn how to sculpt paper into intricate, stunning flowers with educators Allison Jones and Kendra Vincent. Using various craft papers, participants will

receive hands-on instruction for creating different paper flowers. Register at least 7 days in advance.

Time: 12 p.m. - 3 p.m.
Fee: \$20



Friday, March 9 **Botanical Eggs & Nests for the Home**

A version of our popular egg dyeing program for adults! We'll show you how to make plant-derived egg dyes and instruct you on the art of

hand blowing and decorating eggs using leaves and flowers from the garden. We will also create beautiful bird nest centerpieces to house some of your egg art collection! Register at least 5 days in advance.

Time: 1 p.m. - 3 p.m.
Fee: \$15



Friday, May 18 **Cyanotype Scarves**

Harness the power of sunlight to create a beautiful, one-of-a-kind piece of wearable art with educators Allison Jones and Kendra Vincent! Each participant receives a silk scarf on which to create a unique pattern

with interesting shapes from nature. Feel free to bring patterning objects from home as well. Register at least 7 days in advance.

Time: 1 p.m. - 3 p.m.
Fee: \$30

Children's Programs



Wednesdays, March - May **Garden Sprouts**

Preschool children (3-5) discover the wonders of the Botanical Garden alongside Garden naturalist and educator Sue Watts. In this nature-based program for preschoolers and their caregivers, a new seasonal theme is introduced each week with new discoveries, stories, arts and crafts, nature walks, and observation. Limit 12 participants. Preregister 2 days ahead.

Time: 10 a.m. - 11 a.m.

Fee: \$5 family/session (Siblings under 1 free).

Thursdays, Mar. 1, 15, 29, Apr. 12, 26, May 10, 24



Junior Naturalists

This year's Junior Naturalist Club for elementary students (ages 6-12) explores the exciting habitats of South Carolina. From the mountains to the sea, participants will learn about the animals and plants who call this State home, and the landscapes that define South Carolina. Scholarships available -- contact

Sue Watts (watts9@clemson.edu)

Time: 4 p.m. - 5 p.m.

Fee: \$90 series

Thursdays, Mar. 8, 22, Apr. 5, 19 May 3, 17

Junior Gardener: Garden to Table



In this after school garden club, kids learn the basics of gardening through fun and exciting hands-on activities with educator Sue Watts. Discover the secrets of soil and compost, and meet some wriggly worms. Plant veggie and flower seeds, tend seedlings and later transplant them into the

Children's Garden. Explore the Garden's insects and birds and create wonderful habitats for them. In every class, we'll sample fresh veggies and explore different ways to prepare and enjoy them. Take home seeds and seedlings to start a garden at home.

Time: 4.30 p.m. - 5.30 p.m.

Fee: \$90 series

- Unless otherwise noted, all programs meet in the Hanson Nature Learning Center in the basement of the Hayden Conference Center.



Homeschool Days

Join us on the last Wednesday of each month, for an exciting, hands-on learning experience! Themes change each month, and activities are designed for children ages five and up. However, all ages are welcome to attend. Register at least 2 days in advance.

January 31 – Animals in Winter
February 28 – The Night Sky
March 28 – Spring Around the World
April 25 – Plant Parts/Photosynthesis
May 30 – Plants and People

Time: 1 p.m. - 2:30 p.m.

Fee: \$5

Fridays

Stroller Struts

We will begin with a story and then we'll set off on a Garden walk, exploring the day's theme. These free, monthly programs are ideal for preschoolers, but all ages are encouraged to join in the fun!



March 30 – Wildflower Walk
April 27 – Animal Babies
May 25 – Bird is the Word

Location: Meet at the Garden Amphitheater

Time: 10 - 11 a.m.

Fee: Free



Unique adventures for ages 6 - 12 years old.
Hands-on, fun and educational programs.



Make music AND dream!
Multi-instrumentalist and songwriter, Rebecca Smith, inspires you and your seedling or sprout to sing and dance to nature-themed music. Imaginations soar as your child learns to sing in tune and move to rhythm. Classes are outside on pretty

days! Each class ends with an instrument petting zoo!
Suggested Ages: Under 6 years. Register at least one week in advance. Limit 12 participants.
Location: Hayden Conference Center.

Mondays, 10 a.m. - 11 a.m.

Tuesdays, 4 p.m. - 5 p.m.

Thursdays, 10 a.m. - 11 a.m.

Winter: 8 weekly classes Jan 8-Mar 15: \$64 per child
(Under 1 yr are free with paid sibling).

Spring: 8 weekly classes Mar 19-May 24: \$64 per child
(Under 1 yr are free with paid sibling).

Both sessions: \$120 for 1 child (Under 1 yr free with paid sibling).

Fridays, March 16, April 13, May 18

Preschool Musical Hikes

Join Rebecca Smith for a magical musical nature hike around the Garden! Hike will include short woodland trails, so no strollers please. Stops will include the duck pond, children's garden, Hunt cabin, and secret whimsical animal friends! Musical instruments provided for this fun-filled hike! Suggested ages: 3-6yrs Register 3 days in advance. Limit 12 participants.

Time: 11 a.m. - noon

Location: Meet at Nature Learning Center

Cost: \$5/child

Saturday, May 12

Mother's Day Family Sing-a-long

Join Rebecca Smith for a morning singing and celebrating Mother's Day and Spring! Look forward to original and familiar songs about motherhood and springtime beauties like flowers and butterflies. Children will be able to dance with percussion instruments at the front of the stage, if they wish! Mrs. Rebecca will let the children strum her guitar, ukulele, or banjo at the end of the interactive performance. Bring a picnic blanket, snacks or lunch, and enjoy a beautiful morning in the Garden!

Time: 10:30 a.m. - 11:30 a.m.

Location: Garden Amphitheater

Cost: \$8/family

Meet the Garden's Board Members

We wanted to introduce our eleven Garden Board Members to our Friends. In this issue, we introduce Dabney Peeples, Richard Porcher, Marcia Radakovich and Joe Turner. We asked each one their favorite part of the Garden, or favorite Garden experience.



Dabney Peeples

A landscape architect, regionally renowned for his ability to adapt historically accepted design principles to fit the contemporary lifestyles of his clients.

His favorite Garden experience:

"To listen to Patrick McMillan explain what the upper Piedmont looked like during Catesby's travels in our area and why it looks the way it does now is practically life changing. That one walk and his explanation confirmed my commitment to the garden. And I'm equally excited about the Jurassic garden and it's potential for understanding the look of that alluring era."



Richard Porcher

The well-known author of *A Guide to the Wildflowers of South Carolina*, *Wildflowers of the Carolina Lowcountry and Lower Pee Dee*, *The Market Preparation of Carolina Rice*, and *The Story of Sea Island Cotton*.

Richard taught countless students and mentored many graduate students including our Director, Patrick McMillan, during his tenure as professor at The Citadel.

His favorite Garden place:

The Maritime Forest Exhibit of the Natural Heritage Trail.



Marcia Radakovich

Marcia retired nine years ago as a Director of Sales in the blood products industry. She became a Master Gardener and also went back to school for a Landscape Design Certificate.

Marcia and her husband, Dan, were married in 1986 and have two sons, Christian and Grant.

Her favorite Garden places:

The Hanover House, which is such a special historic property, and the Camellia Garden which is so beautiful.



Joe Turner

Joe Turner is the CEO of First Sun Management Corp. which owns and operates 46 Wendy's restaurants in four Southeastern states. Joe graduated from Clemson in 1971 with a BS in Industrial Management and earned an MS in Management in 1977. He is also a member

of the Will to Lead Capital Campaign Executive Committee.

His favorite Garden place:

The Children's Garden.

Thank you for making generous donations between 7/04/2017 and 12/9/17 All at the Patron, Magnolia, Diamond, Maple, Emerald, Camellia, and Sapphire levels are joint Garden & Museum members.



*Thank you
to our
Garden Board*

Mary Elder, Chair

Bob DiBella

Donna Donnelly

Heather Hilliard

Frazer Pajak

Dabney Peeples

Richard Porcher

Karin Purvis

Marcia Radakovich

Carol Savage

Joe Turner



Patron
Glenn W. Franklin

Magnolia
Asa and Brenda Hill
Lawrence Roel
T. C. Thomasson, Jr.
Bill and Halley Townsend

Maple
Don and Ansley Fraser
Donald M. Gloyer
John and Gayle McGregor
Robert and Charlotte Otto
Kenneth and Melinda Schweer
Michelle R. Shain
Minor and Hal Shaw
William Stuck
James L. Wannamaker, Jr.

Camellia
John and Josephine Allen
Steven and Jeannie Alley
Maranda and Curtis Arnold
Lisa D. Alsobrook
Leslie and Karen Beck
James and Mary Blass
Robert and Margaret Burnette
Dick and Elaine Bushey
William H. Clayton, Jr.
Frank and Crossie Cox
Dixie and David Damrel
Chris and Cathy Davenport
Charles and Pamela Deal
Liang and Monica Dong
Harold and Donna Donnelly
Dennis Francis
John and Kathy Fulmer
Bettina B. George
James and Elizabeth Glenn
Aspen and Devon Gorry
Mike and Virginia Haas
Richard and Janice Haldeman
Brett and Jennifer Haring
James and Lily Haughton
Nancy Kennedy
Kristin E. Knight
Jennifer L. Lubic
Valerie L. Meador
Ellen Moore
Priscilla G. Munson
Kathryn Pennell
William F. Phillips
Michael and Elizabeth Purcell
Jerry and Beth Redmond

Charles and Anna Rickell
Ed and Elizabeth Selby
Alice J. Shove
Conrad and Susan Shuler
Stephen and Diane Singleton
Elizabeth P. Stall
Jerry and Beth Redmond
Charles and Anna Rickell
Ed and Elizabeth Selby
Alice J. Shove
Conrad and Susan Shuler
Stephen and Diane Singleton
Elizabeth P. Stall
Virgil E. Story
Amy C. Sutherland
Alden G. Valentine
Thomas E. Villiger
James and Linda Vissage
James G. Williams
James and Barbara Williams
Mary P. Williams
Michelle York

Holly
Ron and Toni Anderson
Linda L. Annand
Charles and Jacqui Aurich
Baldwin-Robinson
Tamara Baringer
Michael and Margaret
Childress
Bill O. Cooper
Laura W. Cooper
David and Julie Dutterer
Brooks and Carol Gallagher
Susan K. Goebel
S. W. Goodyear
Phil and Elaine Graybeal
Gerry and Lin Hagen
Mary K. Hall
John and Lisa Hansley
John and Beverly Harris
Jason P. Joines
Nancy Kinas
Michael Martin and Diane Nau
Mike and Jennifer McClain
Martin E. Meek
Dennis and Polly Morgan
William B. Mullinax
Barry and Elizabeth Myers
Daniel L. Noneaker
Holly L. Parrott
Donald and Frances Plotnik
Ken and Sandra Pruitt
Forrest and Dolores Stegeline
Ruth Van Atter
Nico and Mitzi Vanderschaaf
Nichole I. Veasey
Chuck and Janet Waugaman
Jim and Regina Weeks
Bradley and Sharon Williams

Hosta
Karen Baber
Wayne and Gail Ballard
Mary Bowman
Louise M. Bradley
Beth Brown
Pat Brown
Dick and Ann Christie
Columbia Garden Club
Foundation
Carl W. Cole
Nancy B. Corontzes
Cottage Green Landscape
Perino and Kay Dearing
Sally J. Derflinger
Deborah Desjarlais
Marvin and Jean Doerr
Tim and Kathryn Dunmyer
Amelia S. Earnhardt
Susan C. Fedor
Kenneth and Rebecca Graves
Sandra Greiwe
Susan D. Hansen
Frank and Joyce Hartsell
Martha B. Heaton
Thomas and Kathleen
Henderson
Bud and Leslie Hicklin
Sharon Hoeft
Tracy and Julie Ivester
Kawasaki of Seneca
Judith Koepnick
Susan M. Lech
Faye Legros
Garnett and Jane Lindle
Dianne Long
Christopher and Beatrice
Mango
Diane Marino
Nancy Miskelley
Bill and Anne Masters
Terry McKenney
Sharon R. McMahan
Amanda E. Moore
Anne Okie
Frazer S. M. Pajak
Vickie Peace
Suzanne M. Pearman
Clark Riddle
Eleanor I. Rohrbaugh
David and Molly Senn
John and Janet Sparks
Ivan and Jo Stubbs
Lisa Tenney
Beverly Tippens
Barbara Vanselow
Sue H. Wells
Hal and Stephanie White
Cheryl Wolff
Daniel and Stephanie Wright
Barbara Zacharczyk

We apologize for any errors or omissions.
Contact Angel Perkins at 864-656-3405 or perkin8@clemson.edu.

150 Discovery Lane
Clemson, S.C. 29634-0174



Printed on recycled paper
with soy ink.

Plants for the Twenty-First Century



Wand goldenrod
Solidago stricta



Mountain marigold
Tagetes lemmonii

If you're like me, then perhaps your heart goes aflutter upon seeing the goldenrods bloom in late summer-early autumn, especially when they are growing amongst varieties of lavender asters. Pictures simply can't capture the stunning sight as we pass them along our roads. There are approximately 28 species of goldenrod (*Solidago* spp.) in South Carolina, all of which produce masses of tiny golden flowers from August to November.

One goldenrod in particular truly struck my fancy this year: Wand goldenrod (*Solidago stricta*). This upright goldenrod has small, narrow leaves that press against the stem, giving this goldenrod its wand-like appearance. Narrow, plume-like clusters of yellow flowers bloom from August to November. The wand goldenrod grows alongside the boardwalk of our longleaf pine savanna on the Natural Heritage Garden Trail. As in nature, the wand goldenrod grows in medium to wet, well-drained soils in full sun. They attract numerous butterflies and bees as well. It is native to sandy pine barrens and wet coastal plain areas from New Jersey to Texas. If you missed them this year, be sure to catch these beautiful goldenrods next autumn. ~ Allison Kelly, Natural Heritage Trail Manager

While the Desert Garden doesn't have much in the way of fall foliage, there was no shortage of fall color on some desert plants. One of the showiest this year was *Tagetes lemmonii*, or mountain marigold. This native of Arizona and Mexico is one of those plants that is so colorful it can be enjoyed from the window of a moving car. While it would be a medium size shrub in warmer climates, it behaves as an herbaceous perennial here with the habit of a shrubby groundcover. It happily grows in the heat of the summer, needing little if any supplemental water, even in dry weather. In the summer, it grows quickly and outcompetes most weeds. Its leaves are very fragrant, which is probably why it has very few pests. Starting in mid-October and continuing until frost or prolonged cold, the flowers open to almost completely cover the plant, transforming it from dark green to a bright gold. It is easily one of the most spectacular fall plants at the SCBG, and we are hoping to offer it at our spring plant sale. ~ Trenton Miller, Collections Manager