

FRONIUS **IG** INVERTERS

ARTICLE DESCRIPTION

ARTICLE NO.

FRONIUS IG 15	4,200,001
FRONIUS IG 20	4,200,002
FRONIUS IG 30	4,200,003
FRONIUS IG 40	4,200,004
FRONIUS IG 60 HV	4,200,006

Indoor housing for
FRONIUS IG 15/20/30 with display 44,0240,1001



Outdoor housing for
FRONIUS IG 15/20/30 with display 44,0240,1005



Indoor housing for
FRONIUS IG 40/60 HV with display 44,0240,1002



Outdoor housing for
FRONIUS IG 40/60 HV with display 44,0240,1006



CONNECTION VARIATIONS

According to your needs, the connection area can be carried out with screw terminal (= basic version) or plugs. DC-plugs of the company MultiContact in two versions (MC 3, MC 4) or from Tyco; up to five strings per inverter.

AC-screw terminal (= basic version)



DC-plugs & AC-screw terminal



DC- & AC-plugs



DC-plugs for FRONIUS IG Outdoors



ARTICLE DESCRIPTION

ARTICLE NO.

Screw terminal = basic version

44,0240,3000

ARTICLE DESCRIPTION

ARTICLE NO. MC3

ARTICLE NO. MC4

ARTICLE NO. Tyco

1 DC-plug + AC-screw terminal

44,0240,3001

44,0240,3041

44,0240,3021

2 DC-plugs + AC-screw terminal

44,0240,3002

44,0240,3042

44,0240,3022

3 DC-plugs + AC-screw terminal

44,0240,3003

44,0240,3043

44,0240,3023

4 DC-plugs + AC-screw terminal

44,0240,3004

44,0240,3044

44,0240,3024

5 DC-plugs + AC-screw terminal

44,0240,3005

44,0240,3045

44,0240,3025

1 DC-plug + 1 AC-plug

44,0240,3006

44,0240,3046

44,0240,3026

2 DC-plugs + 1 AC-plug

44,0240,3007

44,0240,3047

44,0240,3027

3 DC-plugs + 1 AC-plug

44,0240,3008

44,0240,3048

44,0240,3028

4 DC-plugs + 1 AC-plug

44,0240,3009

44,0240,3049

44,0240,3029

5 DC-plugs + 1 AC-plug

44,0240,3010

44,0240,3050

44,0240,3030

1 DC-plug FRONIUS IG Outdoors

44,0240,3011

44,0240,3051

44,0240,3031

2 DC-plugs FRONIUS IG Outdoors

44,0240,3012

44,0240,3052

44,0240,3032

3 DC-plugs FRONIUS IG Outdoors

44,0240,3013

44,0240,3053

44,0240,3033

4 DC-plugs FRONIUS IG Outdoors

44,0240,3014

44,0240,3054

44,0240,3034

5 DC-plugs FRONIUS IG Outdoors

44,0240,3015

44,0240,3055

44,0240,3035

FRONIUS **IG** CENTRAL INVERTERS

Central inverter with MIX-Concept for photovoltaic systems from 24 kWp upwards.

ARTICLE DESCRIPTION

ARTICLE NO.

FRONIUS IG 300	4,200,504
FRONIUS IG 400	4,200,501
FRONIUS IG 500	4,200,502

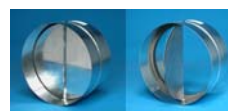


Top Cover IP 20	44,0240,5100
Top Cover IP 43	44,0240,5101
Socket steel (= basic version)	44,0240,5001
Socket stainless (extra charge)	44,0240,5002

Supply Air Option FRONIUS IG Central Inverters	44,0240,5102
---	--------------



Non-return flap for FRONIUS IG Central Inverters	42,0200,1011
---	--------------



Personal Display Card integrated for FRONIUS IG Central Inverters	4,240,017
--	-----------

Extension for RS-232 connection for FRONIUS IG Central Inverters	4,001,655
---	-----------



Pipe connection for FRONIUS IG Central Inverters (250>224 mm)	42,0201,2375
--	--------------



FRONIUS **IG** SYSTEM MONITORING

FRONIUS IG COMCARD

Network interface card for each FRONIUS IG which is part of a data communication system. Each FRONIUS IG COMCard can supply power for up to three additional components. For the supply of more than three components per COMCard an additional power supply is required.

ARTICLE DESCRIPTION	ARTICLE NO.
FRONIUS IG COM Card integrated*)	4,240,001
FRONIUS IG COM Card retrofit**)	4,240,001,Z



FRONIUS IG DATALOGGER CARD & BOX

Responsible for data administration and data storage. You can choose the version „easy“ (for systems with only 1 FRONIUS IG inverter) and version „pro“ (for systems with up to 100 FRONIUS IG inverters and up to 10 Sensor Cards). The Card fits for short distances between the inverter and the PC, the Box fits for longer distances (~25m).

ARTICLE DESCRIPTION	ARTICLE NO.
FRONIUS IG Datalogger Card <i>easy</i> integrated*)	4,240,003
FRONIUS IG Datalogger Card <i>easy</i> retrofit**)	4,240,003,Z
FRONIUS IG Datalogger Card <i>pro</i> integrated*)	4,240,002
FRONIUS IG Datalogger Card <i>pro</i> retrofit**)	4,240,002,Z
FRONIUS IG Datalogger Box <i>easy</i>	4,240,103
FRONIUS IG Datalogger Box <i>pro</i>	4,240,102



Definition:

*) integrated: Card is already integrated in the inverter on delivery

**) retrofit: Card for retrofitting

FRONIUS IG SYSTEM MONITORING

FRONIUS IG INTERFACE CARD & BOX

Has a serial interface with an open data protocol that enables the latest PV data to be downloaded from the inverter and processed. This will have following advantages:

- Integration of system data in other IT systems (building control, alarm systems,...)
- Data transfer to PC for other visualisation purposes (e.g. to include PV data on a homepage)
- Interface to other data logging systems

ARTICLE DESCRIPTION	ARTICLE NO.
FRONIUS IG Interface Card integrated*)	4,240,009
FRONIUS IG Interface Card retrofit**)	4,240,009,Z



FRONIUS IG Interface Box	4,240,109
--------------------------	-----------



FRONIUS IG DATALOGGER & INTERFACE (BOX)

Combination of Datalogger and Interface Card in one housing – reduces costs and installation time; created especially for PV systems that shall be equipped with a data communication system for the first time.

ARTICLE DESCRIPTION	ARTICLE NO.
FRONIUS IG Datalogger & Interface (Box)	4,240,105



Definition:

*) integrated: Card is already integrated in the inverter on delivery

***) retrofit: Card for retrofitting

FRONIUS **IG** SYSTEM MONITORING

FRONIUS IG SENSOR CARD & BOX

Enables the connection of sensors for the determination of additional data, e.g. weather data.

ARTICLE DESCRIPTION

ARTICLE NO.

FRONIUS IG Sensor Card integrated*)

4,240,004

FRONIUS IG Sensor Card retrofit**)

4,240,004,Z



FRONIUS IG Sensor Box

4,240,104



POWER SUPPLY

The power supply for DatCom is plugged on one component and supplies the remaining components. This product is only required if more than three components per COMCard are integrated in the DatCom-system.

ARTICLE DESCRIPTION

ARTICLE NO.

Power supply

43,0001,1194



Definition:

*) integrated: Card is already integrated in the inverter on delivery

***) retrofit: Card for retrofitting

FRONIUS IG SYSTEM MONITORING

FRONIUS STRING CONTROL

This component is an optional part of the FRONIUS IG Data communication (DatCom) and has been developed especially for large pv systems working with FRONIUS IG 300, 400 and FRONIUS IG 500 central inverters. One FRONIUS String Control enables the monitoring of up to 25 module strings.

ARTICLE DESCRIPTION	ARTICLE NO.
FRONIUS String Control	4,240,110



CONNECTION VARIATION FRONIUS STRING CONTROL

According to your needs with DC-plugs of the company MultiContact in two different versions (MC 3, MC 4) or from the company Tyco; (for 10, 15, 20 or 25 strings).



Note: The fuses required are NOT included. Please use commercially available industrial fuses that are approved for the direct voltage of the strings. Every fuse should be selected so that its rated current is at least 1.5 times the short-circuit amperage of the string to be protected.

ARTICLE DESCRIPTION	ARTICLE NO. MC3	ARTICLE NO. MC4	ARTICLE NO. Tyco
Connection area FRONIUS String Control	44,0240,3110	44,0240,3120	44,0240,3130

INDUSTRIAL FUSES FOR DIRECT VOLTAGE

When selecting fuses please pay attention both to their appropriate rated current and also to their dimensions and dielectric strength. Fuses available from Fronius:

ARTICLE DESCRIPTION	ARTICLE NO.
Industrial fuse; rated current 5 A	41,0007,0205
Industrial fuse; rated current 10 A	41,0007,0207
Industrial fuse; rated current 15 A	41,0007,0217
Industrial fuse; rated current 20 A	41,0007,0200



FRONIUS **IG** PUBLIC DISPLAY

FRONIUS IG PUBLIC DISPLAY

Display for the visualisation of PV system data in public areas.

ARTICLE DESCRIPTION	ARTICLE NO.
FRONIUS IG Public Display	4,240,306



FRONIUS IG PUBLIC DISPLAY CARD & BOX

Card and Box are compatible with all displays of the company RICO. For short distances between inverter/s and display please choose the Card, for longer distances (~20-30 m) please choose the Box.

ARTICLE DESCRIPTION	ARTICLE NO.
Public Display Card integrated*)	4,240,006
Public Display Card retrofit**)	4,240,006,Z
Public Display Box	4,240,106



Definition:

*) integrated: Card is already integrated in the inverter on delivery

***) retrofit: Card for retrofitting

FRONIUS IG PERSONAL DISPLAY

FRONIUS IG PERSONAL DISPLAY

Wireless display in compact format for data transmission of up to 15 FRONIUS IG inverters.

Note: The FRONIUS IG Personal Display is only compatible with inverters from serial number 14330071 (and higher). The use of a Personal Display does not require the integration of a COMCard or FRONIUS IG Datalogger.

ARTICLE DESCRIPTION

ARTICLE NO.

FRONIUS IG Personal Display

4,240,107



FRONIUS IG PERSONAL DISPLAY CARD (incl. antenna)

Plug in card for each FRONIUS IG inverter whose data shall be transmitted to the Personal Display (the required antenna is enclosed to the Card).

ARTICLE DESCRIPTION

ARTICLE NO.

FRONIUS IG Personal Display Card integrated*)

4,240,007

FRONIUS IG Personal Display Card retrofit**)

4,240,007,Z



FRONIUS IG SIGNAL CARD

Emission of an audio-visual warning in case of a state change / malfunctions at the PV system. As the Signal Card works self-sufficient, there is no COMCard required.

Note: The FRONIUS IG Signal Card is only compatible with inverters from serial number 14330071 (and higher).

ARTICLE DESCRIPTION

ARTICLE NO.

FRONIUS IG Signal Card integrated*)

4,240,012

FRONIUS IG Signal Card retrofit**)

4,240,012,Z



Definition:

*) integrated: Card is already integrated in the inverter on delivery

**) retrofit: Card for retrofitting

FRONIUS IG SOFTWARE

FRONIUS Configurator

The software supports you in the best possible way to get the perfect sizing of pv systems. Even complex systems can be dimensioned easily.

ARTICLE DESCRIPTION

ARTICLE NO.

FRONIUS Configurator

no



FRONIUS IG.access

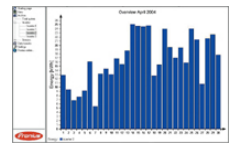
Software for PC/Laptop; for the professional visualisation of PV system data. Enables the administration of up to 100 FRONIUS IG inverters. A CD with the software is enclosed to the data logger for free.

ARTICLE DESCRIPTION

ARTICLE NO.

FRONIUS IG.access

no



FRONIUS IG.message

The software enables the sending of warning messages in form of a message on your PC screen, via Fax, as SMS or via E-mail.

ARTICLE DESCRIPTION

ARTICLE NO.

FRONIUS IG.message

no

FRONIUS IG.interface

This programme is the counterpart to the FRONIUS IG Interface Card / Box and supports potential developers to design an own counterpart for subsequent processing of PV system data.

ARTICLE DESCRIPTION

ARTICLE NO.

FRONIUS IG.interface

no

ACCESSORIES FOR FRONIUS IG SERIES

SENSORS

ARTICLE DESCRIPTION

ARTICLE NO.

Ambient temperature sensor

43,0001,1188



Module temperature sensor PT 1000

43,0001,1190



Irradiation sensor PT 1000

43,0001,1189



Wind sensor

42,0411,0027



DC-ISOLATING BOXES

The DC isolating boxes are designed for the use in grid connected photovoltaic systems with several strings of solar modules. With the integrated DC isolator, the inverter can be turned to zero-potential in case of service work.

ARTICLE DESCRIPTION

ARTICLE NO.

DC-isolating box for FRONIUS IG 15/20/30

42,0300,2438



DC-isolating box for FRONIUS IG 40/60 (HV) with integrated DC-fuses

42,0300,2672



ACCESSORIES FOR FRONIUS **IG** SERIES

MODEMS

To realise perfect remote system monitoring, Fronius recommends the usage of the following modem.

ARTICLE DESCRIPTION

ARTICLE NO.

TIXI Message Modem analog (AT V.90)

41,0018,0037

