



1947-1954 Chevy Truck Custom IFS

Tech line: 1-855-693-1259

www.totalcostinvolved.com

Read and understand these instructions before starting any work!
USE THE PARTS LIST BELOW TO MAKE SURE YOUR KIT IS COMPLETE BEFORE INSTALLATION.
IF ANY PIECES ARE MISSING, PLEASE CONTACT: Total Cost Involved Engineering 855-693-1259

Front Suspension Installation Instructions

Thank you for choosing TCI Engineering's Custom IFS package. This kit features our custom spindles and geometry for unmatched drivability and performance. This design utilizes a stainless eccentric for easy alignment adjustments and also features our new 1" anti-sway bar which is stiffer than the 3/4" previously offered.

'55-'59 Custom IFS on Original Stock Chassis shown



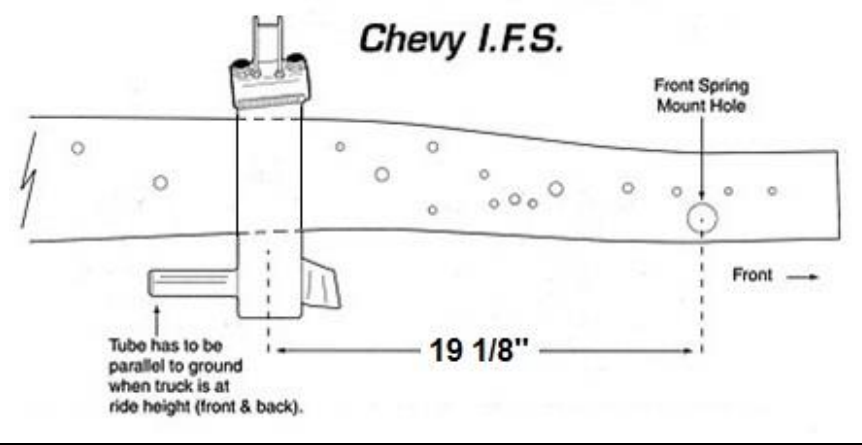
1947-1954 Chevy Truck Custom IFS Parts List –

Part#: * 232-2200-0cp-c3k-1ex or 232-2202-00-sm-a6k-4gx – The asterisk shown is the plain and standard package

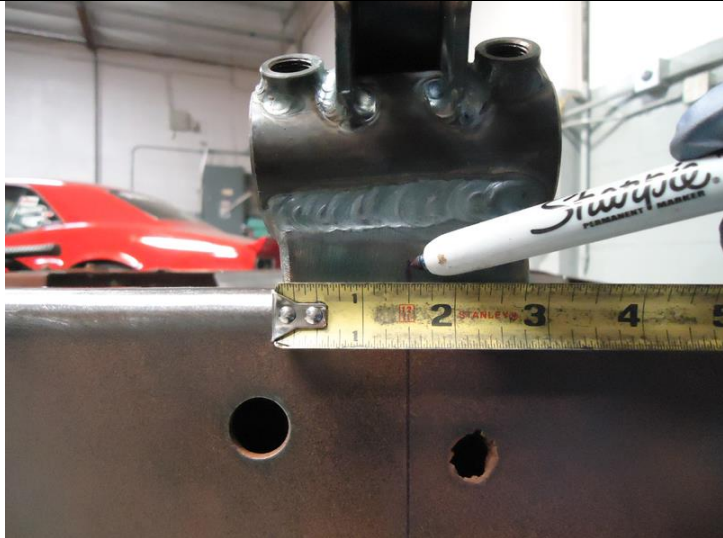
1	Custom IFS Cross member	1	Rack & Pinion – Only
	<ul style="list-style-type: none"> 1947-1954 Chevy Truck Part #: 232-2202-00 		<ul style="list-style-type: none"> Power Rack Part #: 304-3215-00 +2 in Manual Rack Part #: 304-3205-00 +2 in
2	Plain Upper Control Arms – Hardware	1	Rack & Pinion Bolt Kit – Hardware
	<ul style="list-style-type: none"> * Part #: 204-2224-00 – Plain Part #: 204-2224-01 – Black Part #: 204-2224-02 – Polished 		<ul style="list-style-type: none"> Power Rack Part #: 300-3233-00 Manual Part #: 300-3231-00
2	Plain Lower Control Arms – Hardware	1	Tie Rod Ends Set – Hardware
	<ul style="list-style-type: none"> Part #: 213-2324-00 – Coil-Over – Plain Part #: 213-2324-02 – Coil-Over – Black Part #: 213-2324-05 – Coil-Over – Polished 		<ul style="list-style-type: none"> Part #: 301-3238-00
	<ul style="list-style-type: none"> Shocks Body - Part#: skbdy02-0 	2	Assembled: Drop Spindle w/11" Rotors and Calipers 4.75" B/P Part# SPASYCPB11PAD-GMS
2	<ul style="list-style-type: none"> Coil-Springs - Black Powder Coated - Part#: springs500b 	2	Sway Bar and Mount – Hardware 3/8 Bolt Kit
			<ul style="list-style-type: none"> Plain Part #: swaybar-f15-pln Chrome Part #: swaybar-f15-pln
			<ul style="list-style-type: none"> Part #: swy-bar-mnt-05-pln Part #: swy-bar-heims12reg -1/2 Modified Heims: Part #: swy-bar-bolt-11-pln



It is important that the boxing plates be positioned on the edge of the frame rail so that you can maximize weld penetration. This will insure there is enough weld to grind and smooth out the corners. Use a square to make sure that the plates are square to the frame. Tack weld all 4 corners of the plate to the rail and make sure they are still square. Once the boxing plates are confirmed square you can begin welding them in place. Weld 6" sections at a time switching from driver to passenger so heat is kept to a minimum.



Locating the axle center line:
Using the illustration above, find and mark the axle center line on both the passenger and driver side frame rail.



Installing the cross member:
2 degrees frame rake (vehicle stance) is typical. The flat area on top of the cross member should be level to the ground or 0 degrees when the frame is at proper rake.

Center the cross member on the axle center line mark made earlier. **Only tack weld the cross member into place at this time.**

NOTE Grinding the cross member to make it fit between the rails may be necessary.

'55-'59 Chevy pickup IFS shown



Double check all measurements and finish welding the cross member into place.

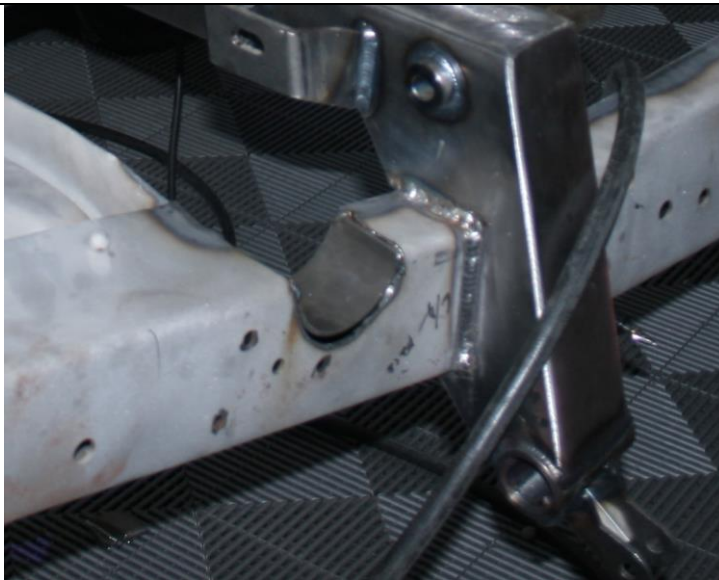
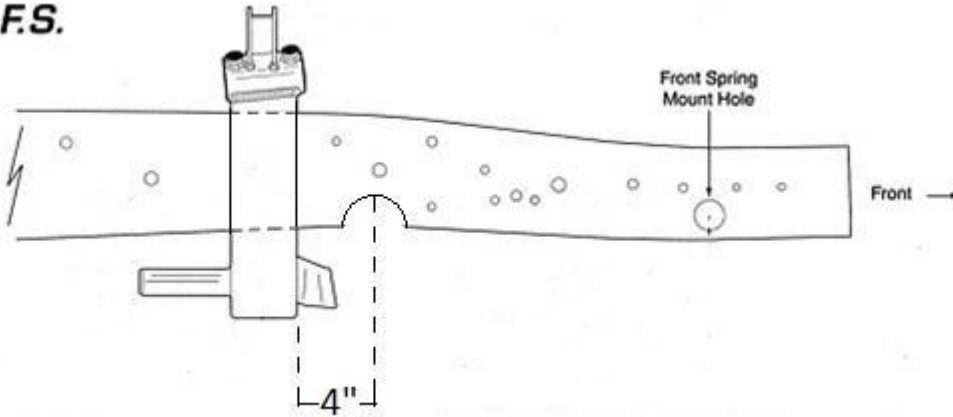


Modifying the factory radiator cross member:

In order for the rack & pinion to fit into the chassis you will have to remove part of the radiator cross member. You can use the rack & pinion as a template. Skip forward to page 10 of the manual for the rack installation instructions.

Trim the crossmember back so the rack & pinion has at least 1/2" clearance.

Chevy I.F.S.

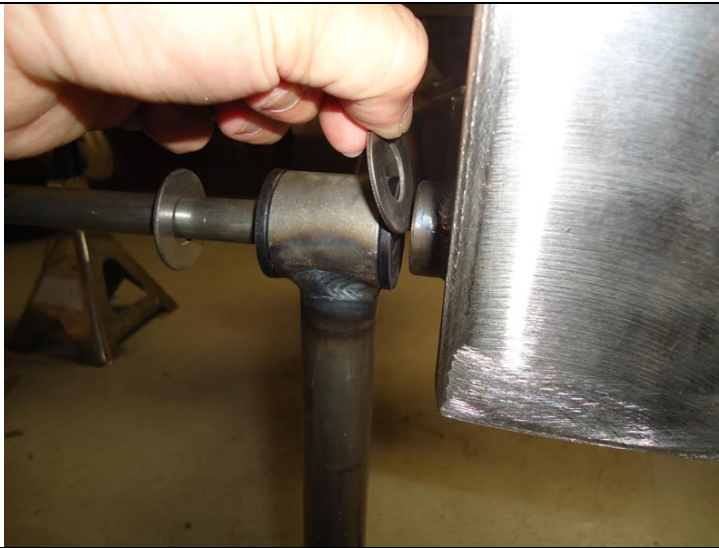


Installing the c-notches:

Once the wheelbase is marked on the frame you can now properly install the c-notches. Using the diagram above measure 4" forward from the face of the cross member. This will be the center of the c-notch. Now measure up the rail 1.5" and mark it. Use the c-notch as a template on the frame using the mark on the frame as the center/top of the c-notch. Cut the frame to match the c-notch.

NOTE Make sure not to cut too much of the frame.

Place c-notches into the frame and weld in place.



Installing the lower control arms:

NOTE The acorn side of the 5/8" shaft faces forward.

Place one washer onto the 5/8" control arm shaft and push it through the front bushing of the control arm. Place a 2nd washer behind the bushing and push the 5/8" shaft into the front of the cross member.

NOTE Driver side control arm is pictured



Place the 3rd washer in between the bushing and the pin as shown.

Push the 5/8" shaft all the way through the pin and bushing. You may need a little elbow grease to get the shaft all the way through.



The 4th and final washer can now be placed on the 5/8" shaft and the Nylock can be installed.

Torque to 75 ft lbs



Installing the upper control arms:

NOTE The acorn side of the 5/8" shaft faces forward.

Place one washer onto the 5/8" control arm shaft and push it through the front bushing of the control arm.

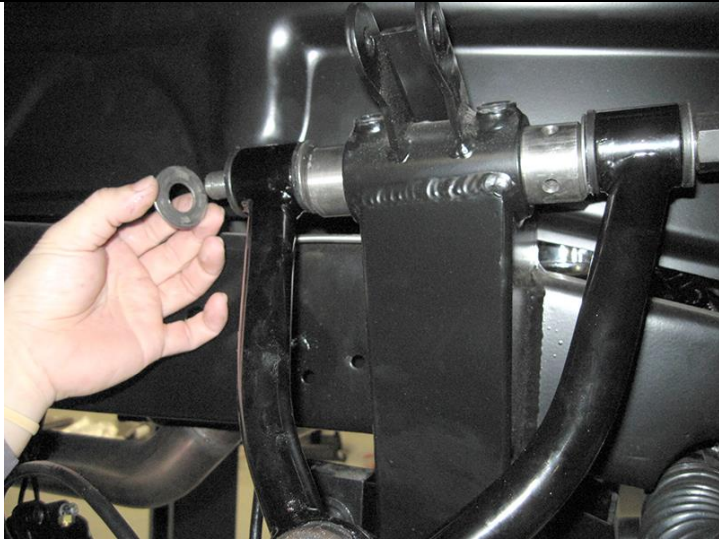
Place a 2nd washer behind the bushing and push the 5/8" shaft into the front of the eccentric housing.

NOTE Driver side control arm is pictured



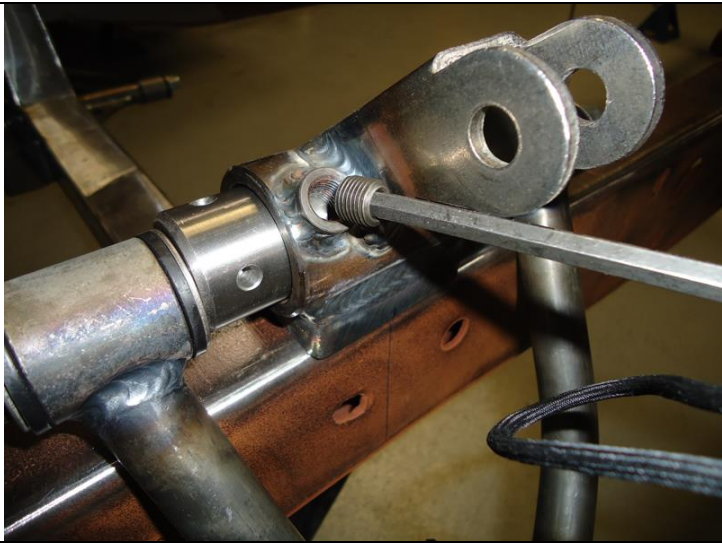
Place the 3rd washer in between the bushing and the eccentric as shown.

Push the 5/8" shaft all the way through the eccentric and bushing. You may need a little elbow grease to get the shaft all the way through.



The 4th and final washer can now be placed on the 5/8" shaft and the Nylock can be installed.

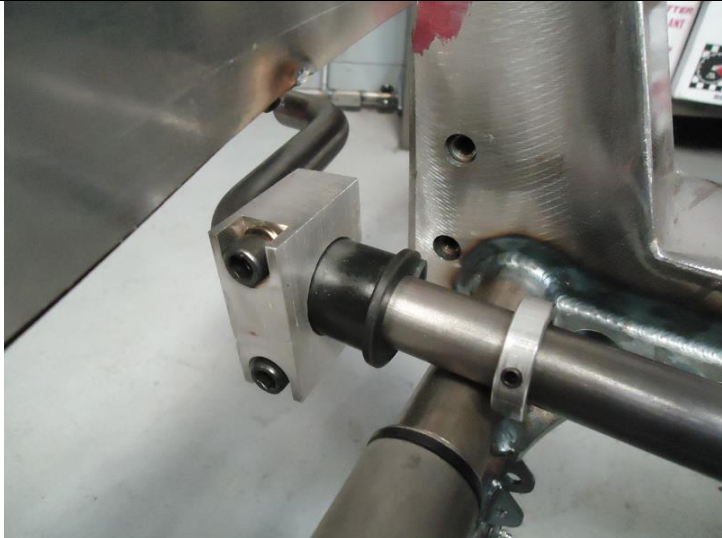
Torque to 75 ft lbs



Install the 1/2-20 set screws into the Eccentric housing and tighten.

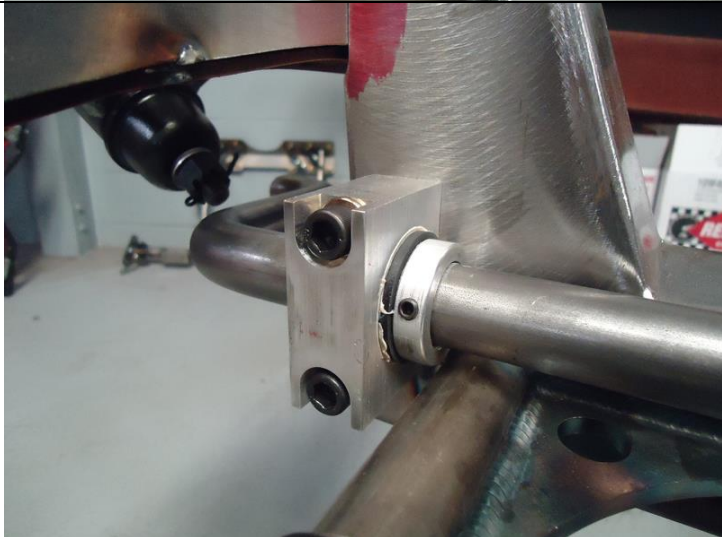
Final alignment will be done once vehicle is finished.

'55-'59 Chevy pickup IFS shown



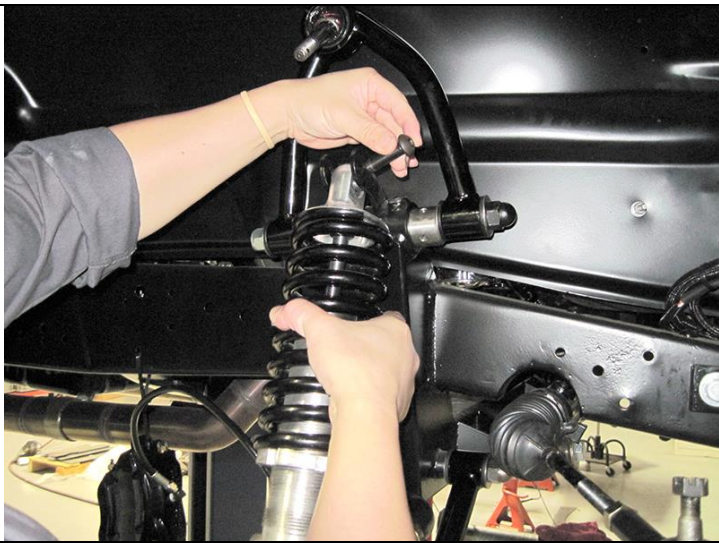
Installing the anti-sway bar:

Slide the lock ring collar over the bar on each side first. The split bushings go over the bar and then the aluminum blocks slide on over the bushings.



The anti-sway bar mounts to the rear of the cross member above the lower control arm pins. Use the supplied hardware to install the aluminum blocks onto the cross member. Torque to 35 ft lbs.

Center the anti-sway bar and lock down the set screws against the bushings.



Installing the Coil-overs:

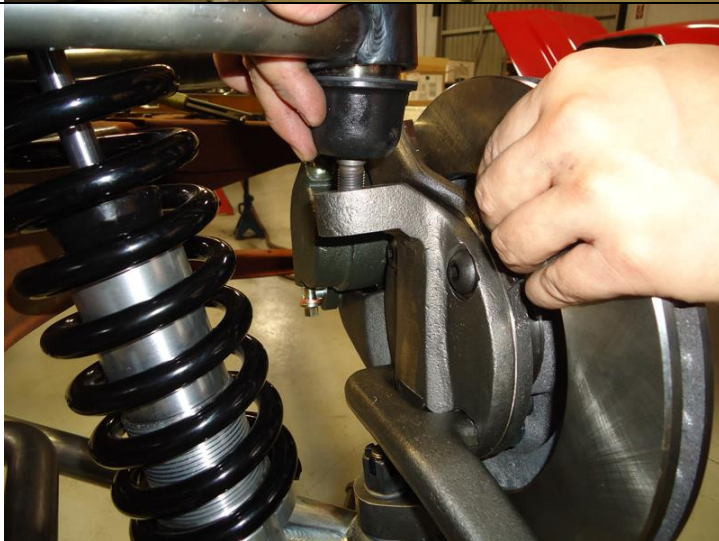
Place the top of the shock into the top mount on the cross member. The adjustment knob should be facing the rear of the vehicle.

Use the 1/2" button head bolt and short nylock to attach the shock.

NOTE Threaded side of the shock body goes down



The bottom bolt has a modified head that needs to be installed from the front to the back.



Installing the spindle assemblies:

Place the spindle onto the lower ball joint with the steering arm facing forward with the large I/D tie rod end taper facing down. (The tie rod end goes up into the steering arm)

Place the ball joint washer first and then the castle nut. Torque the lower ball joint to 90 ft. lbs and install the cotter pin. The lower ball joint is a **MOOG K719**

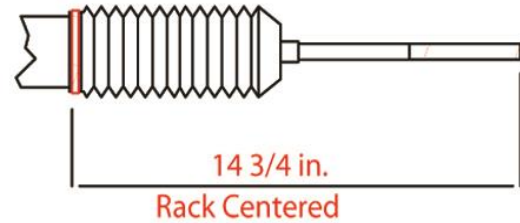
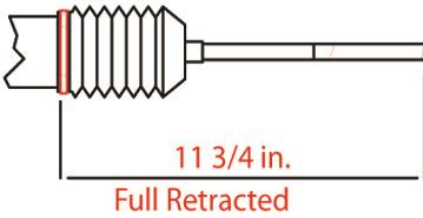
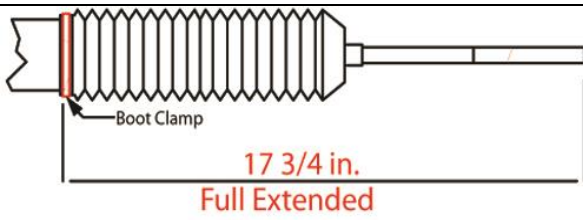
Pull the upper control arm down onto the spindle.

Place the ball joint washer first and then the castle nut. Torque the upper ball joint to 70 ft. lbs and install the cotter pin. The upper ball joint is a **MOOG K772**

NOTE Caliper Fittings:

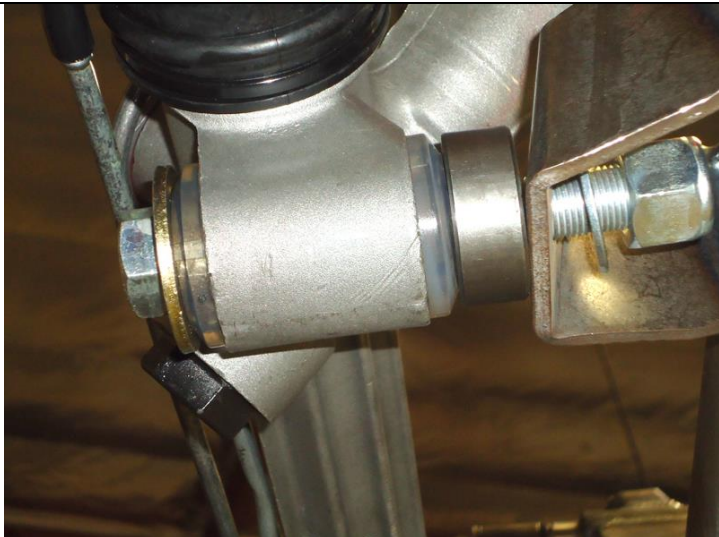
GM Calipers = 10mm x 1.5

Wilwood Calipers = 1/8" NPT



Centering the rack assembly:

The rack needs to be centered to allow equal steering left to right. On a bench, turn the pinion out to lock one way. Measure from a convenient point to the end of the inner tie rod. (This rack was 17 ³/₄). Turn the pinion of the opposite lock position and measure from the same point to the end of the same tie rod (11 ³/₄). 17 ³/₄ minus 11 ³/₄ = 6. Divided by 2 = 3 Add that number to the smallest measurement (11 ³/₄ + 3" = 14 ³/₄") and turn the pinion back till you get that measurement and your rack is centered.



Installing the rack and pinion:

Place the rack on the cross member brackets as shown. Use the supplied 5/8" hardware to fasten it into place. The picture shows a power rack that requires a 5/8" spacer between the rack and the mounting brackets. A manual rack bolts directly to the mounting brackets not needing these spacers.

Torque bolts to 90 ft. lbs

NOTE Power Rack & Pinion fittings:

9/16"-18 Pressure side & 5/8"-18 Return side



Install the jam nut and outer tie rod end onto both sides of the rack. With the rotors pointing straight ahead(0 toe) install the tie rod ends into the bottom of the steering arm. Torque the tie rod ends to 60 ft. lbs. and install the cotter pin.

NOTE Rack & Pinion output shaft:

Manual rack = 9/16"-26 spline

Power rack = 3/4"-36 Spline



The sway bar routes from behind the cross member above the lower control arms and hooks up to the front of the control arms. Use the supplied hardware to install the rod ends with the male on the bottom.

NOTE You can adjust the preload(or lack thereof) once the vehicle is ready to be driven. To do this, disconnect one 1/2" bolt on any heim, place driver in the driver's seat, adjust the loose heim until it goes onto the anti-sway bar with zero load.



Alignment specifications

Caster: Power rack 4-6 degrees positive
Manual rack 2-4 degrees positive

Camber: 0 Degree

Toe-in: 1/32 to 1/16 inch

The lower control arms should be level to the ground or within a degree or two once the vehicle is at full weight. You can then perform the final alignment.

AXLE STUD SIZES:

4.5" Bolt circle rotors = 1/2"x20('75-'80 Ford Granada)

4.75" Bolt circle 10.5" rotors = 12mmx1.5('82-'87 Camaro)

4.75" Bolt circle 11" rotors = 7/16"x20('75-'80 Granada redrilled)

ALL Wilwood hubs = 1/2"x20

No returns or exchanges without a RMA#.

Packages must be inspected upon receipt & be reported within 10 days.

If you are missing parts from your kit, TCI Engineering will send the missing parts via FedEx or U.S. mail ground.

Returned packages are subject to inspection before replacement/refund is given. (Some items will be subject to a 15% restocking fee)

Thank you for your business!

