

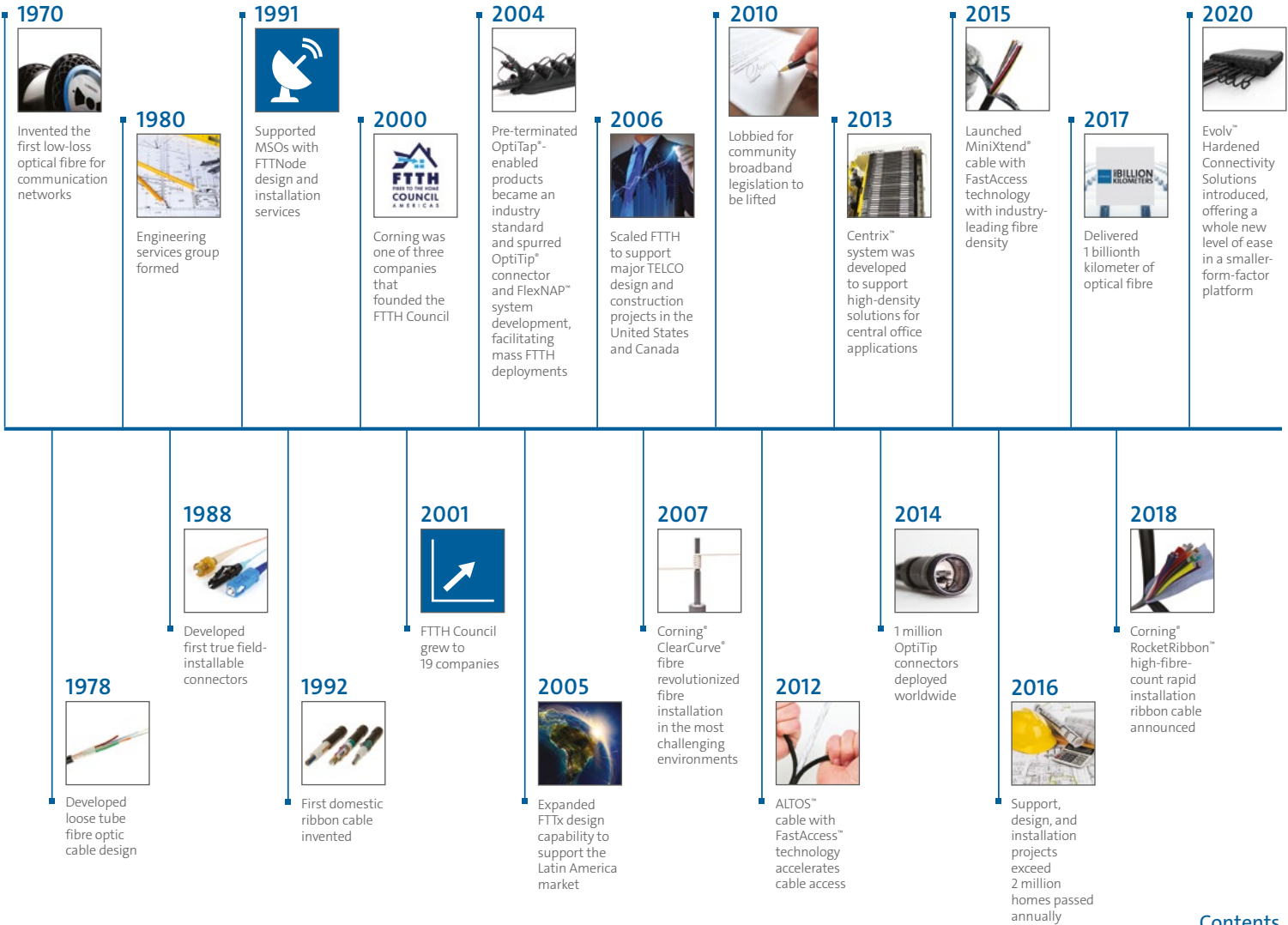


CORNING

FTTH Networks

Core Products EMEA

FTTH Innovation



Contents

Fibre to the Home (FTTH).....	4	Corning® Crimplok™+ Connectors ..	45
FTTH Network Architectures.....	5	Multidwelling Unit (MDU) Solutions	47
FTTH Deployment Methods	6	Corning® ClearCurve®	
Inside Plant Central Office/Headend/PoP.....	7	ZBL Optical Fibre	49
Central Office Solutions	8	Basement Level	50
Centrix™ System	11	Staircase Level	52
PasMAX™ System.....	15	Floor Level	55
RFO Optical Distribution	19	Living Unit	56
EDGE8® Solutions	21	Corning® Fibrlok®	
Outside Plant	23	Mechanical Splices	58
Corning® SMF-28® Ultra Optical Fibre.....	24	No Polish Connector (NPC, NPC+) ..	59
Pre-Connectorised Solutions	25	FuseLite 2 Connectors	61
Micro cable Solution	33	Tools and Resources.....	63
Duct Solution	39	Glossary	64

Why Trust Your Network to Corning?

Corning is a diversified technology company with a proud history of developing breakthrough technologies that significantly improve people's lives. We've been changing the world through innovation for more than 160 years, and our fibre optic products have been used in the communications networks of the biggest and most profitable companies in the world. There is no one more qualified to connect your network.

We've included new product information and a list of tools and resources to help you do the job right the first time.

Connect with the solution that best fits the needs of your network by leveraging the full portfolio of Corning products.



Fibre to the Home (FTTH)

Connect to World-Class FTTH Innovation

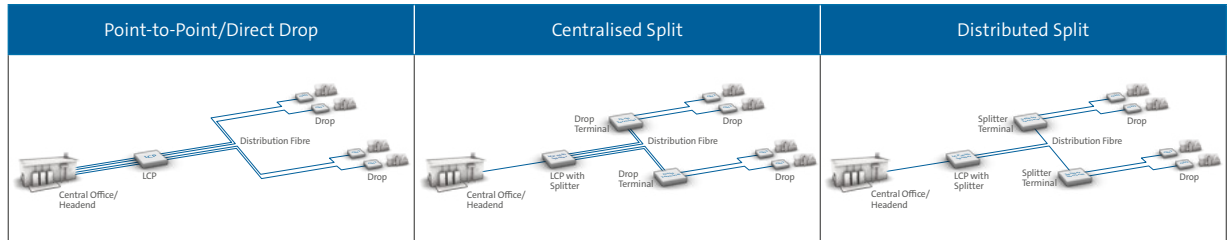
FTTH is the installation and use of optical fibre to provide high-speed broadband access to individual buildings or multidwelling units (MDUs).

Whether your deployment is to a single-family unit (SFU) or MDU, you can count on our FTTH expertise. With over 15 years'

experience passing more than 55 million homes with hardened connectivity, we've set the standard for innovative, field-proven FTTH solutions. Our portfolio of products and engineering support is designed to address your specific challenges from speed of deployment, labour and cost considerations, performance requirements, future readiness, and more.

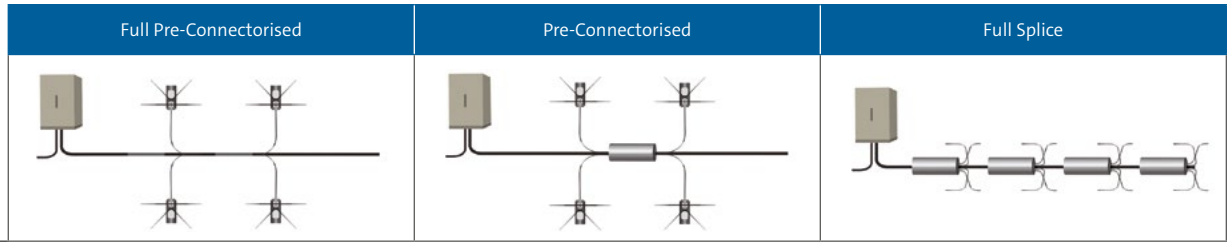
[Contents](#)

FTTH Network Architectures



	Point-to-Point/Direct Drop	Centralised Split	Distributed Split
Consolidated Point for Cable and Splicing Management	Yes	Yes	No
Cabinets in the Field	Yes, as aggregation point	Yes	Yes
Upfront Network CapEx	High	Moderate	Low
Fibre Density in Feeder/Distribution	Rich feeder and distribution cables	Lean feeder and rich distribution cables	Lean feeder and distribution cables
OLT Ports Efficiency	Best	Best	Fair to poor
Supports Efficient Growth Strategy	High	High	Low to medium
Split Ratios Flexibility	High	High	Low to medium
Easily Adaptable	Best	Best	Fair to poor
Quick Facts	<ul style="list-style-type: none"> Typically deployed to subscribers within five miles of central office in conjunction with centralised split and distributed split architectures Home run architectures offer dedicated fibre from CO/HE to each subscriber with no splitters in the field, resulting in the most fibre-rich network architecture 	<ul style="list-style-type: none"> Most common architecture deployed in the United States and Canada A single, centralised location for housing splitters in the field optimises OLT ports while leaning out the feeder network 	<ul style="list-style-type: none"> Gaining popularity in the United States based on widespread success in Latin America and Europe By distributing or cascading splits in two or more field locations, the physical size of products in the field can shrink in size as the ports at each location are shared until the last access point. This is the most fibre-lean network architecture shown

FTTH Deployment Methods



	Full Pre-Connectorised	Pre-Connectorised	Full Splice
Speed of Deployment (HP)	Fast	Moderate	Slow
Subscriber Connection Speed (HC)	Fast	Fast	Slow
Optimal Method of Build	Aerial, duct	Aerial, duct, direct buried	Aerial, duct, direct buried
Optimal Subscriber Density	Medium to high	Low to high	Low to medium
Design Verification/Planning	High	Moderate	Low
Pre-Connectorised	Yes	Yes	No
Splices in the Field	Low	Moderate	High
Labour Skill Level	Low	Moderate	High
Installation Risk Due to Labour Variability	Low	Moderate	Moderate to high
Scalable for Mass Deployment	Best	Fair	Poor
Deferability	High	Moderate	Low
Architecture	Point-to-point, centralised, distributed	Point-to-point, centralised, distributed	Point-to-point, centralised, distributed
Installation Type	Greenfield/brownfield	Greenfield/brownfield	Greenfield/brownfield
Quick Facts	<ul style="list-style-type: none"> Pre-installed "plug-and-play" network access points mean simplicity, speed, and profitability for you and the fastest turn-up for your subscribers Splicing is concentrated at splitter cabinets in fibre-rich network architecture 	<ul style="list-style-type: none"> Enables fast installation of subscriber drops by utilising hardened connectors at terminals Splicing extends to distribution access points as well as splitter cabinet 	<ul style="list-style-type: none"> Allows for the least amount of pre-engineering up front Requires skilled labour splicing at all access points and subscriber premises



Inside Plant Central Office/Headend/PoP

The heart of your network is the central office, headend, or point-of-presence (PoP) zone, collectively known as the inside plant (ISP). It's where reliability is paramount and where you need products that optimise your network's capabilities well into the future.

To simplify the design and deployment of your inside plant, we've developed versatile product families that deliver industry-leading density, enable unparalleled scalability, and provide the lowest total cost of ownership.

[Contents](#)



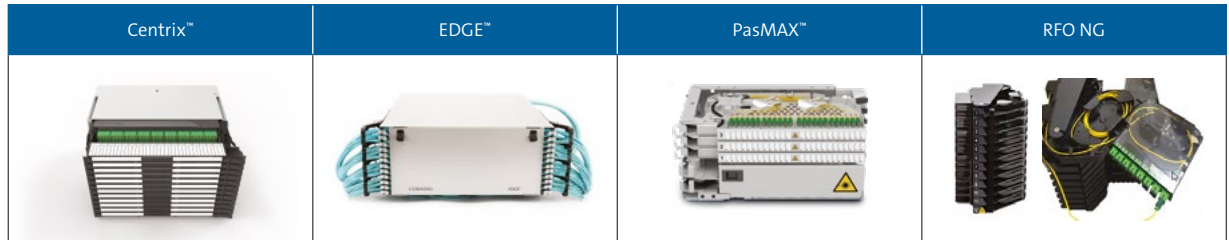
Connect to a Future-Ready Central Office

Keeping your data centre fully optimised, eliminating latency, reducing downtime, maintaining compliance with continually evolving standards at the ever-increasing transmission speeds required to keep your business competitive ... that's quite a challenge. We understand your pain points well – density,

network uptime, speed, simplicity, and a clear migration path to meet future requirements – because we've solved these challenges with solutions in more than 50,000 data centres in 30 countries. Connect with us to put our never-ending innovation to work in your next deployment.

[Contents](#)

Central Office Solutions Overview



Main Attribute	Density	Density	Link Protection	Rotation
HD – 3000+ Links (Ports) per Frame	✓	✓		
Single-Circuit Management			✓	
Jumper Management in Frame	✓	✓	✓	
Left-to-Right Cross-Connect (Central Jumper Management)	✓	✓		
Splices Separated From Patches	✓		✓	✓
All-Front Access (Wall/Back-to-Back)	✓		✓	
Mounting in 19-in Frame	✓	✓	✓	
Stubbed Hardware	✓	✓		✓
Rotating Trays			✓	✓
Port and Jumper Protection Cover	✓	✓	✓	✓
Plug and Play™ Pre-Terminated Option	✓	✓		✓

[Contents](#)

Central Office Solutions Overview

	Centrix™	EDGE™	PasMAX™	RFO NG
				
LC Connectivity	✓	✓	✓	✓
SC Connectivity	✓		✓	✓
LSH Connectivity	✓		✓	
MTP®/MPO Connectivity	✓	✓		
Scaling Increment (Fibre Ports)	12	8/12	72	12
Ports in 2,200 mm Frame	4,320 LC	5,760 LC	1,440 LC	1,008
LC Ports per m ²	17,280	11,520	4,000	4,032
Optical Device Integration	✓	✓	✓	✓
Zone-4 Rating (Earthquake)	Special Frame Construction			
GR-449 Footprint	✓			
300 mm Depth	✓	✓ Rear cable entry	✓	✓
Wall-Mountable Option		✓		
Panel Material	Plastic	Plastic	Metal	Plastic

[Contents](#)

Inside Plant — Centrix™ System Overview

The Centrix™ system is a high-density fibre-management system for central offices, headends, data centres, and other backbone applications that provide a balance of very high density with innovative jumper routing.

Centrix supports up to 4,320 LC or 2,880 SC connector ports per frame (17,280 LC ports per approx. 1 square meter on a quad configuration) and is offered in a front-access cabinet that allows back-to-back configurations or wall mounting. The cabinet design provides optimised routing paths for jumpers, reducing the risk of pileup or entanglement. When using single-fibre jumper for patching, Corning recommends the use of 4 m long, 1.6 mm patch cords in a single cabinet or for groups of up to four cabinets.

The foundation of Centrix is a cassette that can be tailored to include a variety of optical devices (splitter, WDM, attenuators, etc.) providing flexibility

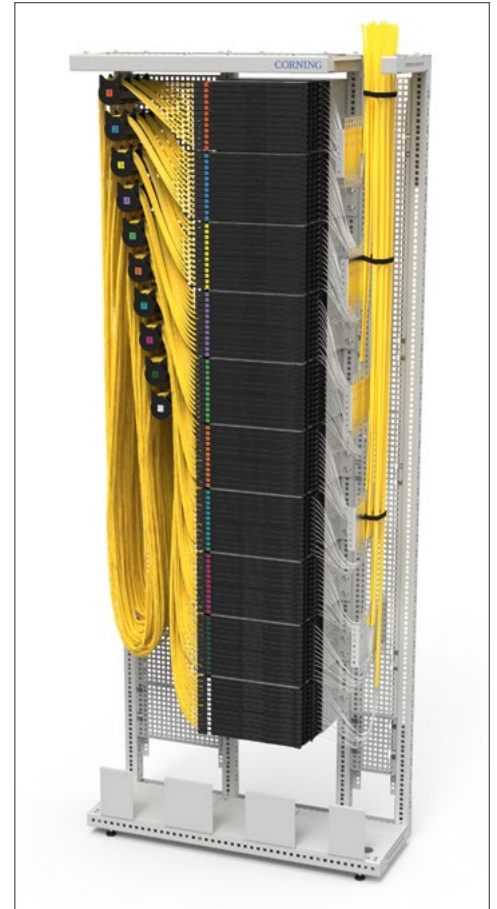
and functionality within a single frame without sacrificing density. Each cassette contains fibre-guiding elements, a splice section, and can hold up to 24 SC or 36 LC connector adapters.

Easy port access is possible due to a sliding cassette with drop-down handle.

Housings can be ordered empty or preloaded with cassettes for on-frame splicing and are available as 1U (holding three cassettes), 2U (six cassettes), and 4U (12 cassettes).



Centrix Housings with Modules



Centrix Optical Distribution Frame

[Contents](#)

Inside Plant – Centrix™ System

Centrix™ Cabinets*	
Part Number	Product Description
CTX-CAB-F2209NNRNB	Front-Access Single Cabinet, 2200 × 900 × 300 mm (H × W × D), cable entry on right side, without walls and door, bottom channel, unassembled
CTX-CAB2F2218PGBNB	Front-Access Dual Cabinet, 2200 × 1800 × 300 mm (H × W × D), cable entry on both sides, walls, door with acrylic glass window, bottom channel, unassembled
CTX-CAB4F2218PGBNB	Front-Access Quad Cabinet, 2200 × 1800 × 600 mm (H × W × D), cable entry on both sides, walls, door with acrylic glass window, bottom channel, unassembled

Centrix Cabinet Accessories*	
Part Number	Product Description
CAB-WL2009RN	Rear Wall Kit for 2200 × 900 mm cabinet
CAB-WL2203SN	Side Walls for 2200 mm cabinet
CAB-DR2209SGB	Door Kit (doors with acrylic window, with lock) for 2200 × 900 mm cabinet
CAB-DR2209SMN	Door Kit (doors, full metal, with lock) for 2200 × 900 mm cabinet
CAB-WS	Splice and Work Shelf for the cabinet
CAB-DP-A4	Documentation Pocket A4
CAB-SR-CBL	Strain-Relief Plate
CAB-MTFR	Mounting Kit for fixing cabinet to the floor (screws and mounting kit)
CAB-MTWL	Mounting Kit for fixing cabinet to the wall (screws and mounting kit)
CAB-FC	Mounting Kit for side-by-side and back-to-back cabinet connections

*Additional configurations including preassembled options available, [please refer to our online catalogue for more details.](#)



Centrix Front Access Cabinet

[Contents](#)

Inside Plant – Centrix™ System

Centrix™ Housings*	
Part Number	Product Description
CTX-S1U	Centrix 1U Housing, 3 Cassette Positions, for up to 3 cassettes
CTX-S2U	Centrix 2U Housing, 6 Cassette Positions, for up to 6 cassettes
CTX-S4U	Centrix 4U Housing, 12 Cassette Positions, for up to 12 cassettes

Centrix Cassettes*	
Part Number	Product Description
CTXCPP36-B3-2RH000	Centrix Splice Cassette, 36 LC APC adapters and single-mode pigtails, MIC* 900 µm
CTXCPP24-6C-2RH000	Centrix Splice Cassette, 24 SC APC adapters and single-mode pigtails, MIC 900 µm
CTXCA24-B3L	Centrix Patch Panel Cassette, 24 LC APC, left, front access
CTXCA12-6CL	Centrix Patch Panel Cassette, 12 SC APC, left, front access
CTXCMA00-B3-SP1116	Centrix Splitter Cassette 1:16 Splitter, LC APC connectors
CTXCMA00-B3-SP1132	Centrix Splitter Cassette 1:32 Splitter, LC APC connectors
CTXCMA00-6C-SP1116	Centrix Splitter Cassette 1:16 Splitter, SC APC connectors
CX0136B389KSMIL00	Centrix MTP cassette 36 LCAPC – 3 MTPAm LEG, Left

*Additional configurations available, [please refer to our online catalogue for more details.](#)

Centrix Accessories	
Part Number	Product Description
CAB-BKT-MTP48	Cabinet Adapter Bracket 48xMTP
CTX-SERVICE-BKT	Service Bracket for work on Centrix cassettes
CAB-TT-050M	Fibre-Protection Tube, 3 mm for up to 36 fibres, 50 m
CAB-TT-TOOL	Zipper Tool to open fibre-protection tube



Centrix 1U Housing



Centrix Splice Cassette



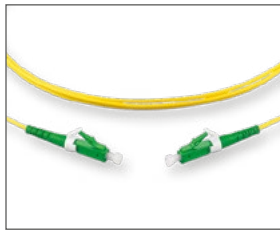
Centrix Splitter Cassette

[Contents](#)

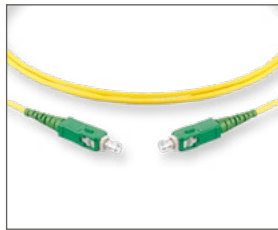
Inside Plant – Centrix™ Cable Assemblies

Single-Fibre Patch Cords (1.6 mm Diameter)*			
Part Number	Connectors	Product Description	FastShip
F222201G1Z16004M	LC APC-LC APC	LC APC to LC APC Patch Cord, 1 F, tight-buffered cable, LSZH™, 1.6 mm legs, Corning® SMF-28® Ultra fibre, 4 m	🚩
F022201G1Z16004M	LC APC-LC UPC	LC APC to LC UPC Patch Cord, 1 F, tight-buffered cable, LSZH, 1.6 mm legs, SMF-28 Ultra fibre, 4 m	🚩
F224401G1Z16004M	LC APC-SC APC	LC APC to SC APC Patch Cord, 1 F, tight-buffered cable, LSZH, 1.6 mm legs, SMF-28 Ultra fibre, 4 m	🚩
F225801G1Z16004M	LC APC-SC UPC	LC APC to SC UPC Patch Cord, 1 F, tight-buffered cable, LSZH, 1.6 mm legs, SMF-28 Ultra fibre, 4 m	🚩
F020201G1Z16004M	LC UPC-LC UPC	LC UPC to LC UPC Patch Cord, 1 F, tight-buffered cable, LSZH, 1.6 mm legs, SMF-28 Ultra fibre, 4 m	🚩
F024401G1Z16004M	LC UPC-SC APC	LC UPC to SC APC Patch Cord, 1 F, tight-buffered cable, LSZH, 1.6 mm legs, SMF-28 Ultra fibre, 4 m	🚩
F025801G1Z16004M	LC UPC-SC UPC	LC UPC to SC UPC Patch Cord, 1 F, tight-buffered cable, LSZH, 1.6 mm legs, SMF-28 Ultra fibre, 4 m	🚩
F444401G1Z16004M	SC APC-SC APC	SC APC to SC APC Patch Cord, 1 F, tight-buffered cable, LSZH, 1.6 mm legs, SMF-28 Ultra fibre, 4 m	🚩
F445801G1Z16004M	SC APC-SC UPC	SC APC to SC UPC Patch Cord, 1 F, tight-buffered cable, LSZH, 1.6 mm legs, SMF-28 Ultra fibre, 4 m	🚩
F585801G1Z16004M	SC UPC-SC UPC	SC UPC to SC UPC Patch Cord, 1 F, tight-buffered cable, LSZH, 1.6 mm legs, SMF-28 Ultra fibre, 4 m	🚩

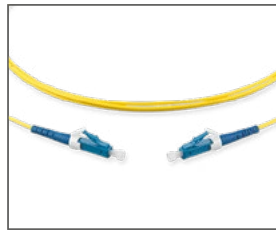
*Additional lengths available, part numbers can be created by modifying last four digits, e.g., 010M for 10 m patch cord.



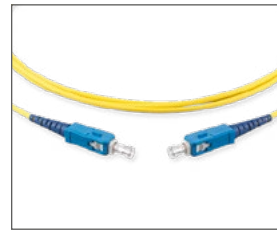
LC APC-LC APC Patch Cord



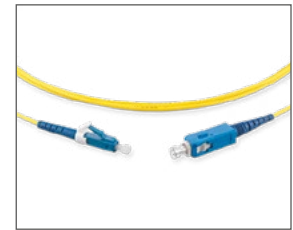
SC APC-SC APC Patch Cord



LC UPC-LC UPC Patch Cord



SC UPC-SC UPC Patch Cord



LC UPC-SC UPC Patch Cord

[Contents](#)

Inside Plant — PasMAX™ System Overview

Our PasMAX™ system is a patch-housing solution optimised for fibre-rich applications like central offices, headends, and core fibre nodes. The system accommodates a wide array of cable-termination options, including patch/splice of pigtails and incoming cable, pure patch of pre-terminated cables, and pure splice of cables. Your choice of optical components such as WDM filters and optical splitters may be integrated as well.

Designed for simple installation and optimised for easy maintenance, our PasMAX system ensures that existing links are protected from unintended disruptions at all times.

The MAX single-circuit splice-management feature provides individual fibre access without affecting other links. For additional link protection, the system includes integrated patch cord routing. Subscriber lines and transmission equipment can be mixed on demand for the utmost flexibility. The system consists of an all-front-accessible cabinet, housings assigned for splicing and patching, as well as a number of accessories to adapt the system for your network's specific requirements.



PasMAX Patch Unit



PasMAX Patch and Splice Unit



PasMAX Splice Unit

Inside Plant — PasMAX™ System

PasMAX™ Cabinets*	
Part Number	Product Description
PMX-CAB-F2209NNRNB	PasMAX Cabinet, 2200 × 900 × 300 mm (H × W × D), unassembled, no side walls, no doors, feeder cable on right side, with bottom channel
PMX-CAB-F2212NNBNB	Splice Connector Cabinet, 2200 × 1200 × 30 mm (H × W × D), unassembled, no side walls, no doors, feeder cable management on both sides, with bottom channel
OLM-CAB-F2206NNNNB	Jumper Overlength Management Frame, 2200 × 600 × 300 mm (H × W × D) unassembled, no side walls, no doors, with bottom channel

PasMAX Cabinet Accessories*	
Part Number	Product Description
CAB-FA-22-12-DR-L-M	Left Door for cabinet, 2200 × 1200 mm, metal
CAB-FA-22-12-DR-R-G	Right Door for cabinet, 2200 × 1200 mm, metal with glass element
CAB-FA-KIT-12-ROOF	Roof Kit for cabinet, 1200 mm
CAB-FA-KIT-12-STRN	Strain-Relief Plate, 1200 mm for splice concentrator
CAB-FA-KIT-22-12-RW	Rear Wall set for cabinet, 2200 × 1200 mm
CAB-FA-KIT-22-SW	Side Walls set for cabinet, 2200 mm
CAB-FA-KIT-4U-SC-STRN	Frame Plate 4U for splice concentrator
CAB-FA-KIT-TBRC	Top Bridge to connect rows of cabinets
CAB-WS	Splice and Work Shelf for the cabinet

*Additional frame configurations and accessories available, please refer to [our online catalogue](#) for more details.



PasMAX Front Access Cabinet



Splice and Work Shelf

[Contents](#)

Inside Plant — PasMAX™ System

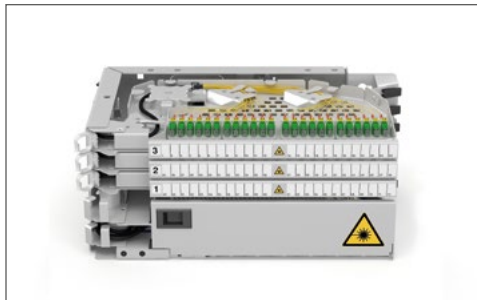
PasMAX™ Patch and Splice Units*	
Part Number	Product Description
PMX-3S0072B322T04	4U, 3 shelves for 72 fibres, LC APC adapters, with pigtails, single-fibre management, crimp with protectors
PMX-3S00726C44T04	4U, 3 shelves for 72 fibres, SC APC adapters, with pigtails, single-fibre management, crimp with protectors

PasMAX Splice Units*	
Part Number	Product Description
PMX-0S00720000N04	2U, splice trays for 72 fibres, no adapters/pigtails, single-fibre management, crimp with protectors
PMX-0S01920000N09	2U, 21 inch, splice trays for 192 fibres, no adapters/pigtails, crimp with protectors

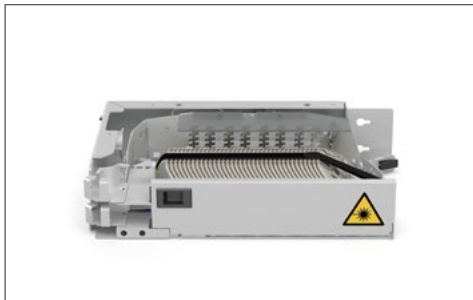
PasMAX Patch Units*	
Part Number	Product Description
PMX-3S0072B30000B	2U, 3 shelves for 72 fibres, LC APC adapters, no pigtails, breakout version
PMX-3S00726C0000B	2U, 3 shelves for 72 fibres, SC APC adapters, no pigtails, breakout version

*Additional configurations available, please refer to [our online catalogue](#) for more details.

PasMAX Accessories	
Part Number	Product Description
PMX-KIT-19IN	19 in Mounting Adapter
S46998-A5-R171	Buffer Tube Protection 15 mm, spiral wrap includes tool, 50 m
S46998-A5-R177	Buffer Tube Protection 8 mm, spiral wrap includes tool, 100 m



PasMAX Patch and Splice Unit



PasMAX Splice Unit



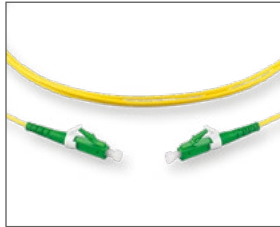
PasMAX Patch Unit

[Contents](#)

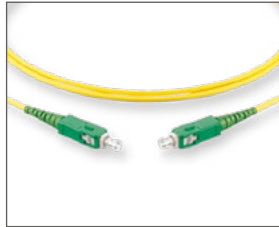
Inside Plant — PasMAX™ Cable Assemblies

Single Fibre Patch Cords (2.0 mm Diameter)*			
Part Number	Connectors	Product Description	FastShip
F222201G1Z20004M	LC APC-LC APC	LC APC to LC APC Patch Cord, 1 F, tight-buffered cable, LSZH™, 2.0 mm legs, Corning® SMF-28® Ultra fibre, 4 m	🚩
F022201G1Z20004M	LC APC-LC UPC	LC APC to LC UPC Patch Cord, 1 F, tight-buffered cable, LSZH, 2.0 mm legs, SMF-28 Ultra fibre, 4 m	🚩
F224401G1Z20004M	LC APC-SC APC	LC APC to SC APC Patch Cord, 1 F, tight-buffered cable, LSZH, 2.0 mm legs, SMF-28 Ultra fibre, 4 m	🚩
F225801G1Z20004M	LC APC-SC UPC	LC APC to SC UPC Patch Cord, 1 F, tight-buffered cable, LSZH, 2.0 mm legs, SMF-28 Ultra fibre, 4 m	🚩
F020201G1Z20004M	LC UPC-LC UPC	LC UPC to LC UPC Patch Cord, 1 F, tight-buffered cable, LSZH, 2.0 mm legs, SMF-28 Ultra fibre, 4 m	🚩
F024401G1Z20004M	LC UPC-SC APC	LC UPC to SC APC Patch Cord, 1 F, tight-buffered cable, LSZH, 2.0 mm legs, SMF-28 Ultra fibre, 4 m	🚩
F025801G1Z20004M	LC UPC-SC UPC	LC UPC to SC UPC Patch Cord, 1 F, tight-buffered cable, LSZH, 2.0 mm legs, SMF-28 Ultra fibre, 4 m	🚩
F444401G1Z20004M	SC APC-SC APC	SC APC to SC APC Patch Cord, 1 F, tight-buffered cable, LSZH, 2.0 mm legs, SMF-28 Ultra fibre, 4 m	🚩
F445801G1Z20004M	SC APC-SC UPC	SC APC to SC UPC Patch Cord, 1 F, tight-buffered cable, LSZH, 2.0 mm legs, SMF-28 Ultra fibre, 4 m	🚩
F585801G1Z20004M	SC UPC-SC UPC	SC UPC to SC UPC Patch Cord, 1 F, tight-buffered cable, LSZH, 2.0 mm legs, SMF-28 Ultra fibre, 4 m	🚩

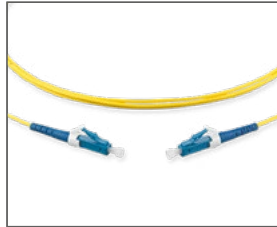
*Additional lengths available, part numbers can be created by modifying last 4 digits, e.g., 010M for 10 m patch cord.



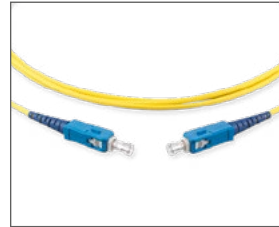
LC APC-LC APC Patch Cord



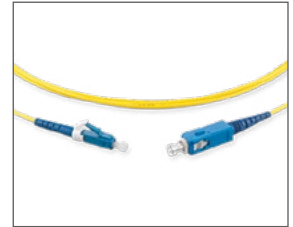
SC APC-SC APC Patch Cord



LC UPC-LC UPC Patch Cord



SC UPC-SC UPC Patch Cord



LC UPC-SC UPC Patch Cord

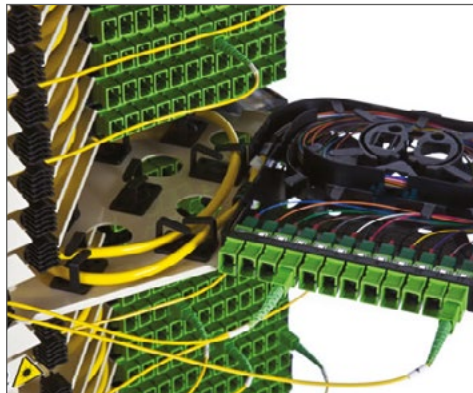
[Contents](#)

Inside Plant — RFO Optical Distribution Frame Overview

The ever-increasing demand for bandwidth will continue to strain fibre management capabilities and require more density and scalability for your inside plant fibre distribution frame infrastructure. To meet your service-level agreements, a sound multi-network optical distribution frame (ODF) strategy must include infrastructure that can:

- Provide a format expandable for future growth
- Simplify and increase patch-cord management and storage
- Improve adds and changes or eliminate mishandling of cabling assemblies that can lead to potential dB loss
- Migrate to future generation of transmission and aggregation systems by equipment

The RFO ODF meets this demand for more network capacity and reach, helping you meet the challenges that come with fibre management and migration to new technologies and equipment. You can build the ODF system that conforms to your fibre-distribution requirements, with three RFO frame formats and two RFO chassis for optimal connectivity, management, and scalability.



N541135A RFO NG



RFO NG

Inside Plant – RFO Optical Distribution Unit

RFO NG System Components*		
Part Number	Product Description	Reference Number
UU001611928	RFO NG II – Cable head block for 12 connectivity modules, left hand (144 fibres, without modules)	N711842A
UU004220529	RFO NG – Cable head block for 6 connectivity modules, left hand (72 fibres, without modules)	N711886A
UU001611969	RFO NG II – Connectivity Module pre-connectorised 12 SC APC, G652.D, 250 µm	N541230A
UU001611985	RFO NG II – Connectivity Module pre-connectorised 12 SC APC, G657.A2, 250 µm	N541229A
UU001611993	RFO NG II – Breakout Module 12 SC APC	N541231A
FQ100081063	RFO NG – Connectivity Module pre-connectorised 12 SC UPC, G652.D	N541181A
FQ100083549	RFO NG – Connectivity Module pre-connectorised 12 SC UPC, OM3	N541199A
UU003107818	RFO NG II – Symmetric Connectivity Module pre-connectorised 24 LC APC	N541232A
FQ100082426	RFO NG II – Symmetric Connectivity Module pre-connectorised 12 SC APC	N541193A
FQ100082376	RFO NG II Protective Patch Cord Holder for symmetric module	N671317A
UU001611944	RFO NG II – Vertical Mounting Profile for 6 cable head blocks	N711865A
UU001611951	RFO NG II – Vertical Mounting Profile for 8 cable head blocks	N711866A
UU001611936	RFO NG II – Vertical Mounting Profile for 11 cable head blocks	N711867A
FQ100076006	RFO NG – Ring of 1000 m guiding tube (between DEECAM D5/3 and connectivity modules)	N581203A
FQ100084497	RFO NG – Ring of 25 m guiding tube (between DEECAM D5/3 and connectivity modules)	N581207A
FQ100069241	RFO NG – Cable Breakout Module DEECAM D18 for 24 guiding tubes D5/3 mm	N711547A
FQ100075792	RFO NG – Cable Breakout Module DEECAM D25 for 60 guiding tubes D5/3 mm	N711597A
FQ100074704	RFO Fixation Kit for 8 breakout cables	N711584A



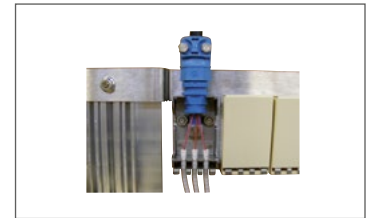
Cable Head Block RFO NG II for 12 Connectivity Modules (Anthracite)



RFO NG Module Pre-Connectorised 12 SC APC



RFO NG II – Vertical Mounting Profile 6 Cable Head Blocks



Cable Breakout Module DEECAM D18

*For RFO cable assembly parts, please refer to page 18.

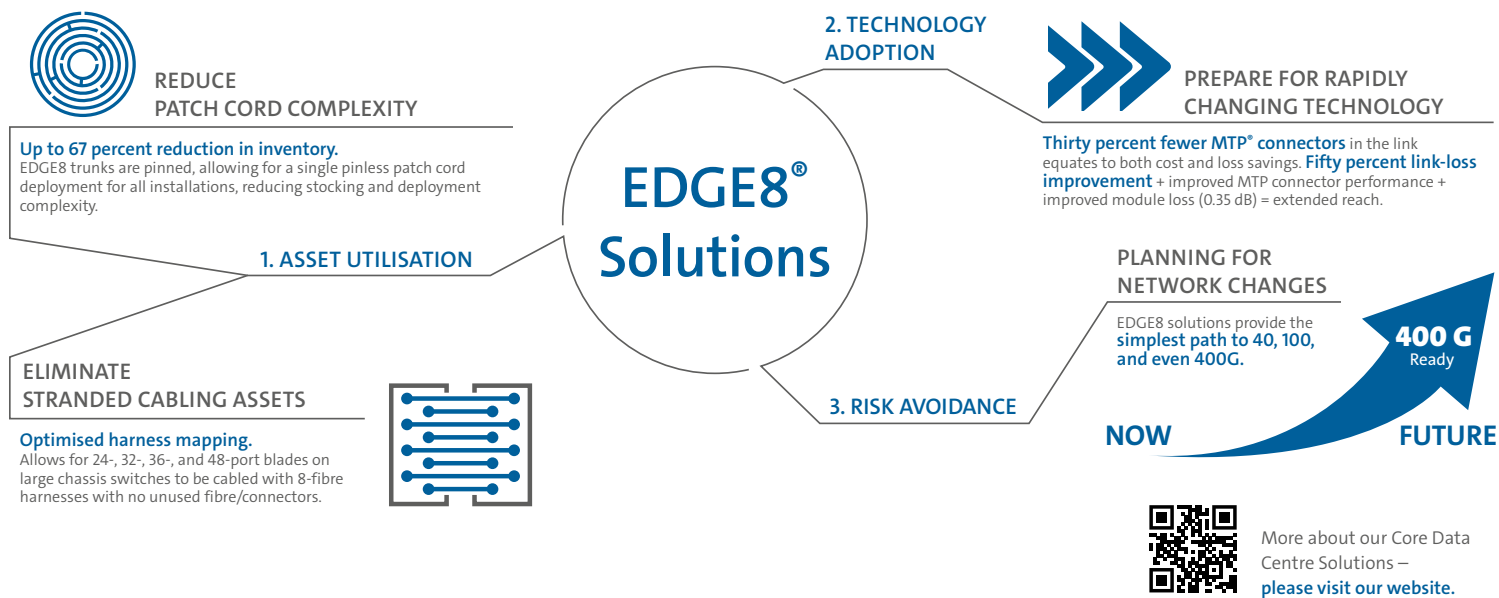
[Contents](#)



EDGE8[®] Solutions

Connect to Award-Winning Base-8 Design

Our award-winning EDGE8[®] solutions combine all of the density, simplicity, scalability, and modularity of EDGE[™] solutions with the superior network scalability, improved link performance, and 100 percent fibre utilisation of a Base-8 design. Connect with EDGE8 solutions to extend the value of your Base-8 design in three critical areas:



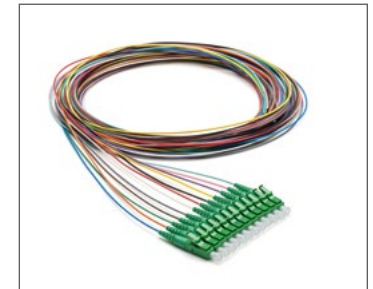
Inside Plant – Cable Assemblies

12-Fibre Tight-Buffered Cable Assemblies (Terminated on Both Ends)*			
Part Number	Connectors	Product Description	Legs OD
222212G6Z20015M	LC APC-LC APC	LC APC to LC APC, 12 F breakout tight-buffered cable assembly, LSZH [†] , 2.0 mm legs, Corning [®] SMF-28 [®] Ultra fibre, 15 m	2.0 mm
022212G6Z20015M	LC APC-LC UPC	LC APC to LC UPC, 12 F breakout tight-buffered cable assembly, LSZH, 2.0 mm legs, SMF-28 Ultra fibre, 15 m	2.0 mm
224412G6Z20015M	LC APC-SC APC	LC APC to SC APC, 12 F breakout tight-buffered cable assembly, LSZH, 2.0 mm legs, SMF-28 Ultra fibre, 15 m	2.0 mm
225812G6Z20015M	LC APC-SC UPC	LC APC to SC UPC, 12 F breakout tight-buffered cable assembly, LSZH, 2.0 mm legs, SMF-28 Ultra fibre, 15 m	2.0 mm
020212G6Z20015M	LC UPC-LC UPC	LC UPC to LC UPC, 12 F breakout tight-buffered cable assembly, LSZH, 2.0 mm legs, SMF-28 Ultra fibre, 15 m	2.0 mm
024412G6Z20015M	LC UPC-SC APC	LC UPC to SC APC, 12 F breakout tight-buffered cable assembly, LSZH, 2.0 mm legs, SMF-28 Ultra fibre, 15 m	2.0 mm
025812G6Z20015M	LC UPC-SC UPC	LC UPC to SC UPC, 12 F breakout tight-buffered cable assembly, LSZH, 2.0 mm legs, SMF-28 Ultra fibre, 15 m	2.0 mm
444412G6Z20015M	SC APC-SC APC	SC APC to SC APC, 12 F breakout tight-buffered cable assembly, LSZH, 2.0 mm legs, SMF-28 Ultra fibre, 15 m	2.0 mm
445812G6Z20015M	SC APC-SC UPC	SC APC to SC UPC, 12 F breakout tight-buffered cable assembly, LSZH, 2.0 mm legs, SMF-28 Ultra fibre, 15 m	2.0 mm
585812G6Z20015M	SC UPC-SC UPC	SC UPC to SC UPC, 12 F breakout tight-buffered cable assembly, LSZH, 2.0 mm legs, SMF-28 Ultra fibre, 15 m	2.0 mm

12-Fibre Tight-Buffered Cable Assemblies (Terminated on One End)*			
Part Number	Connectors	Product Description	Legs OD
002212G6Z20015M	LC APC	LC APC, 12 F breakout tight-buffered cable assembly pigtail, LSZH, 2.0 mm legs, SMF-28 Ultra fibre, 15 m	2.0 mm
000212G6Z20015M	LC UPC	LC UPC, 12 F breakout tight-buffered cable assembly pigtail, LSZH, 2.0 mm legs, SMF-28 Ultra fibre, 15 m	2.0 mm
004412G6Z20015M	SC APC	SC APC, 12 F breakout tight-buffered cable assembly pigtail, LSZH, 2.0 mm legs, SMF-28 Ultra fibre, 15 m	2.0 mm
005812G6Z20015M	SC UPC	SC UPC, 12 F breakout tight-buffered cable assembly pigtail, LSZH, 2.0 mm legs, SMF-28 Ultra fibre, 15 m	2.0 mm

*Additional lengths available, part numbers can be created by modifying last 5 digits, e.g., 0010M for 10 m cable.

Pigtail Packs (Terminated on One End)			
Part Number	Connectors	Product Description	FastShip
FK12-002201G1Z09AA002M	LC APC	Pigtail Kit with 12 LC APC pigtails, 900 µm LSZH tight-buffered, SMF-28 Ultra fibre, 2 m	🚩
FK12-004401G1Z09AA002M	SC APC	Pigtail Kit with 12 SC APC pigtails, 900 µm LSZH tight-buffered, SMF-28 Ultra fibre, 2 m	🚩
FK12-000201G1Z09AA002M	LC UPC	Pigtail Kit with 12 LC UPC pigtails, 900 µm LSZH tight-buffered, SMF-28 Ultra fibre, 2 m	🚩
FK12-005801G1Z09AA002M	SC UPC	Pigtail Kit with 12 SC UPC pigtails, 900 µm LSZH tight-buffered, SMF-28 Ultra fibre, 2 m	🚩



Pigtail Kit with 12 LC APC pigtails

[Contents](#)



Outside Plant

Corning's invention of the first low-loss optical fibre, over 50 years ago, ignited the critical spark that began a communications revolution and forever changed the world.

Today, there are more than 5 billion kilometres of fibre installed around the globe, and Corning continues to lead the industry in product quality and innovation.

[Contents](#)

Corning® SMF-28® Ultra Optical Fibre

Corning® SMF-28® Ultra optical fibre is ITU-TG.652.D compliant and ITU-T recommendation G.652.D compliant optical fibre with Corning's enhanced low-loss and bend fibre technologies. This full-spectrum fibre has bend performance that exceeds the ITU-TG.657.A1 standard and still splices the same as the installed base of single-mode fibres such as Corning® SMF-28e+® fibre. SMF-28 Ultra fibre offers industry-leading specifications for attenuation, macrobend loss, and polarisation mode dispersion values, which provide a solid foundation for new network deployments as well as upgrades to existing networks.



Corning® SMF-28® Ultra Fibre Spool

Maximum Attenuation	
Wavelength (nm)	Maximum Value* (dB/km)
1310	≤ 0.32
1383**	≤ 0.32
1490	≤ 0.21
1550	≤ 0.18
1625	≤ 0.20

*Alternate attenuation offerings available upon request.

**Attenuation values at this wavelength represent post-hydrogen aging performance.

Macrobend Loss			
Mandrel Radius (mm)	Number of Turns	Wavelength (nm)	Induced Attenuation*** (dB)
10	1	1550	≤ 0.50
10	1	1625	≤ 1.5
15	10	1550	≤ 0.05
15	10	1625	≤ 0.30
25	100	1310, 1550, 1625	≤ 0.01

***The induced attenuation due to fibre wrapped around a mandrel of a specified radius.

Mode Field Diameter (MFD)	
Wavelength (nm)	MFD (µm)
1310	9.2 ± 0.4
1550	10.4 ± 0.5

Polarisation Mode Dispersion (PMD)	
	Value (ps/√km)
PMD Link Design Value	≤ 0.04****
Maximum Individual Fibre PMD	≤ 0.1

**** Complies with IEC 60794-3: 2001, Section 5.5, Method 1, (m = 20, Q = 0.01 %), September 2001.

Cabled values might differ, depending on cable design, please refer to cable datasheets for details.

[Contents](#)

Outside Plant — The Value of the Pre-Connectorised Solutions

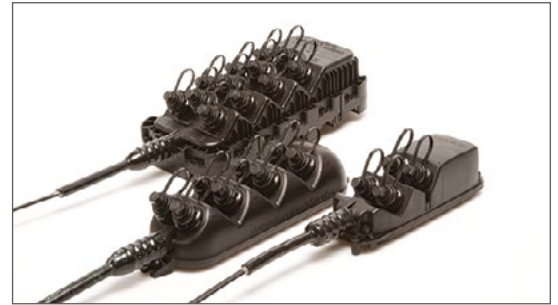
Evolv™ Hardened Connectivity Terminals (HC) with Pushlok™ technology offers the smaller terminals for FTTX networks than ever before. The Pushlok connector is half the size of industry leading hardened connectors and enables terminal sizes up to one quarter of the size of traditional terminals. Designed for use in nearly every access network environment, the terminal is small enough to be placed in existing handholes or pedestals where space is paramount, on building facades, or in aerial networks (pole- or strand-mount). Improved aesthetics improve end user adoption for facade applications.

Corning's **OptiTap®** is the most widely deployed hardened connectorised solution in the world. Designed for use in the network access and drop cable portions of a network, hardened OptiTap connectors have been proven to offer operators quantifiable reductions in installed cost, in some cases doubling the efficiency of installation resources. These connectors, used alone or integrated into hardware products, must be able to protect against environmental factors common in the outside plant, such as extreme temperatures, moisture, humidity and other harsh conditions.

The **ECAM Connect solution** is designed to quickly connect SC format terminated drop cables in outdoor aerial and underground mid-span applications. With the ECAM Connect system, the drop cables can be connected without the need to open the closure. A double-entry ECAM port allows the routing of an uncut feeder cable.



Evolv™ HC Terminal with Pushlok™ Technology



OptiTap Solution



ECAM Connect

Outside Plant — Evolv™ HC Stubbed Terminals with Pushlok™ Technology

Terminal with stubbed SST cable and OptiTip™ Connector	
Part Number	Product Description
DFA4F1FDD1NC050M0P	4 port Terminal, 50 m
DFA4F1FDD1NC100M0P	4 port Terminal, 100 m
DFA8F1FDD1NC050M0P	8 port Terminal, 50 m
DFA8F1FDD1NC150M0P	8 port Terminal, 100 m
DFB6F1FDD1M1050M0P	12 port Terminal, 2 rows of 6 ports, 50 m
DFB6F1FDD1M1100M0P	12 port Terminal, 2 rows of 6 ports, 100 m

Terminal with stubbed SST cable	
Part Number	Product Description
DMA4F1FDD1NC050M0P	4 port Terminal, 50 m
DMA4F1FDD1NC100M0P	4 port Terminal, 100 m
DMA8F1FDD1NC050M0P	8 port Terminal, 50 m
DMA8F1FDD1NC100M0P	8 port Terminal, 100 m
DMB6F1FDD1NC050M0P	12 port Terminal, 2 rows of 6 ports, 50 m
DMB6F1FDD1NC100M0P	12 port Terminal, 2 rows of 6 ports, 100 m
DMB8F1FDD1NC050M0P	16 port Terminal, 2 rows of 8 ports, 50 m
DMB8F1FDD1NC100M0P	16 port Terminal, 2 rows of 8 ports, 100 m

Terminal with stubbed MiniXtend cable	
Part Number	Product Description
DMA4F1MLD1NC050M0P	4 port Terminal, 50 m
DMA4F1MLD1NC100M0P	4 port Terminal, 100 m
DMA8F1MLD1NC050M0P	8 port Terminal, 50 m
DMA8F1MLD1NC100M0P	8 port Terminal, 100 m
DMB6F1MLD1NC050M0P	12 port Terminal, 2 rows of 6 ports, 50 m
DMB6F1MLD1NC100M0P	12 port Terminal, 2 rows of 6 ports, 100 m



Evolv HC 4-, 8-Port Stubbed Terminals with Pushlok Technology



More about Evolv™ HC Solutions – [please visit our website.](#)

Outside Plant — Evolv™ HC Splitter Terminals with Pushlok™ Technology

Evolv™ HC Splitter Terminal with Pushlok™ Technology	
Part Number	Product Description
DSH2F100D1NC000S0P	Terminal with one 1 × 2 splitter
DSH4F100D1NC000S0P	Terminal with one 1 × 4 splitter
DSF8F100D1NC000S0P	Terminal with one 1 × 8 splitter
DSP6F100D1NC000S0P	Terminal with one 1 × 16 splitter



Evolv HC 4-, 8- Port Splitter Terminals

[Contents](#)

Outside Plant — Evolv™ HC ROC™ Drop with Pushlok™ Technology, Dielectric

Evolv™ HC ROC™ Drop with Pushlok™ Technology, Dielectric	
Part Number	Product Description
00D101JB49R100M-P	Pigtail, 100 m
D1D101JB49R100M-P	Patch cord, 100 m
D14401JB4R3100M-P	Pushlok to SC/APC Patchcord, 100 m

Outside Plant — Evolv™ HC DualDrop™ Cable Assembly with Pushlok™ Technology

Evolv™ HC DualDrop™ Cable Assembly with Pushlok™ Technology	
Part Number	Product Description
00D101JFDT3050M-P	Pigtail, 50 m
00D101JFDT3100M-P	Pigtail, 100 m



Evolv™ HC ROC™ Drop Assembly, Pushlok™ to SC/APC



Evolv™ HC DualDrop™ Cable Assembly, Pushlok™ Pigtail

[Contents](#)

Outside Plant — Evolv™ HC Accessories with Pushlok™ Technology

Port Cleaner	
Part Number	Product Description
CLEANER-PUSHLOK	Evolv™ HC Port Cleaner with Pushlok™ Technology, over 525 cleanings, compatible with both Pushlok™ and OptiTap® connectors and ports

Evolv™ HC SC Converters	
Part Number	Product Description
KT-PL-SHROUD-SC	Evolv™ HC SC Converter, used to convert Pushlok™ connectors to SC form factors, MOQ of 10 and OptiTap® connectors and ports
KT-PL-OPT-CONV	Evolv™ HC OptiTap® Converter, used to convert Pushlok™ connectors to OptiTap form factors (to plug into MultiPorts), MOQ of 10 and OptiTap® connectors and ports



Evolv™ HC Port Cleaner



Evolv™ HC SC Converter



Evolv™ HC OptiTap Converter

Outside Plant – Pre-Connectorised OptiTap® Solutions

Multiports With MiniXtend® Cables For Use In Ducts	
Part Number	Product Description
MP-01040444SLM0050M-N	OptiSheath® Multiport Terminal, minicable (MiniXtend®), stubbed, 4 ports, 50 m
MP-01040444SLM0100M-N	OptiSheath Multiport Terminal, minicable (MiniXtend), stubbed, 4 ports, 100 m
MP-01040444SLM0150M-N	OptiSheath Multiport Terminal, minicable (MiniXtend), stubbed, 4 ports, 150 m
MP-01080844SLM0050M-N	OptiSheath Multiport Terminal, minicable (MiniXtend), stubbed, 8 ports, 50 m
MP-01080844SLM0100M-N	OptiSheath Multiport Terminal, minicable (MiniXtend), stubbed, 8 ports, 100 m
MP-01080844SLM0150M-N	OptiSheath Multiport Terminal, minicable (MiniXtend), stubbed, 8 ports, 150 m
MP-01121244SLM0050M-N	OptiSheath Multiport Terminal, minicable (MiniXtend), stubbed, 12 ports, 50 m
MP-01121244SLM0100M-N	OptiSheath Multiport Terminal, minicable (MiniXtend), stubbed, 12 ports, 100 m
MP-01121244SLM0150M-N	OptiSheath Multiport Terminal, minicable (MiniXtend), stubbed, 12 ports, 150 m



4-Port Multiport



8-Port Multiport

Multiports With SST-Drop™ Cables For Aerial Applications	
Part Number	Product Description
MP-01040444SST0050M-N	OptiSheath® Multiport Terminal, SST-Drop™ Cable, stubbed, 4 ports, 50 m
MP-01040444SST0100M-N	OptiSheath Multiport Terminal, SST-Drop Cable, stubbed, 4 ports, 100 m
MP-01040444SST0150M-N	OptiSheath Multiport Terminal, SST-Drop Cable, stubbed, 4 ports, 150 m
MP-01080844SST0050M-N	OptiSheath Multiport Terminal, SST-Drop Cable, stubbed, 8 ports, 50 m
MP-01080844SST0100M-N	OptiSheath Multiport Terminal, SST-Drop Cable, stubbed, 8 ports, 100 m
MP-01080844SST0150M-N	OptiSheath Multiport Terminal, SST-Drop Cable, stubbed, 8 ports, 150 m
MP-01121244SST0050M-N	OptiSheath Multiport Terminal, SST-Drop Cable, stubbed, 12 ports, 50 m
MP-01121244SST0100M-N	OptiSheath Multiport Terminal, SST-Drop Cable, stubbed, 12 ports, 100 m
MP-01121244SST0150M-N	OptiSheath Multiport Terminal, SST-Drop Cable, stubbed, 12 ports, 150 m



1:4 Multiport Splitter

Additional lengths available, part numbers can be created by modifying last four digits, e.g., 080M for 80 m cable.

Splitter Multiports	
Part Number	Product Description
MTS-H444NS000MW-P	OptiSheath® Multiport Splitter Stubless Terminal, 1:4 splitter, SM(OS2) LBL R7.5, SC APC, SC APC
MTS-F844NS000MW-P	OptiSheath Multiport Splitter Stubless Terminal, 1:8 splitter, SM(OS2) LBL R7.5, SC APC, SC APC



More about OptiTap connectors –
please visit our website.

[Contents](#)

Outside Plant – Pre-Connectorised OptiTap® Solutions

Multiport Flex For Space Constraint Applications	
Part Number	Product Description
MOF-0448FD050M-P	OptiSheath® Multiport Flex Terminal, stubbed, dielectric, 4 F, single-mode (OS2), 50 m
MOF-0448FD100M-P	OptiSheath Multiport Flex Terminal, stubbed, dielectric, 4 F, single-mode (OS2), 100 m
MOF-0448FD150M-P	OptiSheath Multiport Flex Terminal, stubbed, dielectric, 4 F, single-mode (OS2), 150 m
MOF-0848FD050M-P	OptiSheath Multiport Flex Terminal, stubbed, dielectric, 8 F, single-mode (OS2), 50 m
MOF-0848FD100M-P	OptiSheath Multiport Flex Terminal, stubbed, dielectric, 8 F, single-mode (OS2), 100 m
MOF-0848FD150M-P	OptiSheath Multiport Flex Terminal, stubbed, dielectric, 8 F, single-mode (OS2), 150 m
MOF-1248FD050M-P	OptiSheath Multiport Flex Terminal, stubbed, dielectric, 12 F, single-mode (OS2), 50 m
MOF-1248FD100M-P	OptiSheath Multiport Flex Terminal, stubbed, dielectric, 12 F, single-mode (OS2), 100 m
MOF-1248FD150M-P	OptiSheath Multiport Flex Terminal, stubbed, dielectric, 12 F, single-mode (OS2), 150 m

Pigtails Based On DualDrop™ Cable	
Part Number	Product Description
004301UFDT3050M	DualDrop™ Cable, 1 F, OptiTap®, FTTx drop pigtail 5.0 ZBL, single-mode R5 (OS2), 50 m
004301UFDT3100M	DualDrop Cable, 1 F, OptiTap, FTTx drop pigtail 5.0 ZBL, single-mode R5 (OS2), 100 m
004301UFDT3150M	DualDrop Cable, 1 F, OptiTap, FTTx drop pigtail 5.0 ZBL, single-mode R5 (OS2), 150 m

Pigtails Based On SST-Drop™ Cable*	
Part Number	Product Description
004301UB4FD050M	OptiTap® SST-Drop™ Indoor/Outdoor Cable Assembly, OptiTap to stub end, 1 F, dielectric, gel-free, bend-insensitive single-mode (OS2), 50 m
004301UB4FD100M	OptiTap SST-Drop Indoor/Outdoor Cable Assembly, OptiTap to stub end, 1 F, dielectric, gel-free, bend-insensitive single-mode (OS2), 100 m
004301UB4FD150M	OptiTap SST-Drop Indoor/Outdoor Cable Assembly, OptiTap to stub end, 1 F, dielectric, gel-free, bend-insensitive single-mode (OS2), 150 m



Multiport Flex



OptiTap Pigtail

[Contents](#)

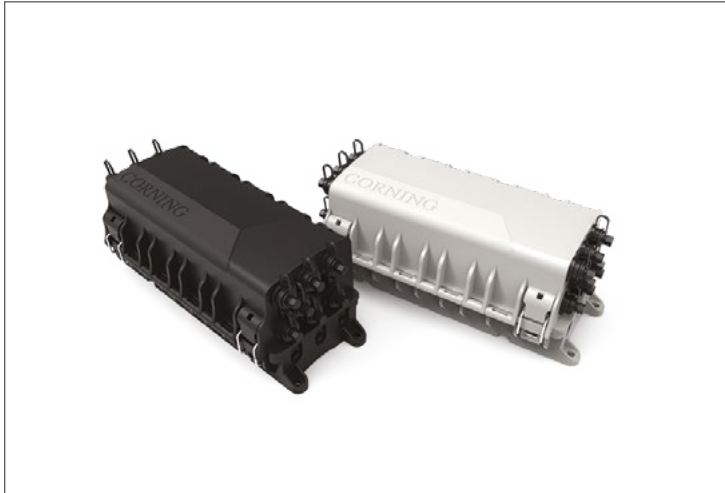
Outside Plant — Pre-Connectorised OptiTap® Solutions

Patch Cords Based on SST-Drop™ Cable*	
Part Number	Product Description
434301UB4FD050M	OptiTap® SST-Drop™ Indoor/Outdoor Cable Assembly, OptiTap to OptiTap, 1 fibre, dielectric, gel-free, ZBL, 50 m
434301UB4FD100M	OptiTap SST-Drop Indoor/Outdoor Cable Assembly, OptiTap to OptiTap, 1 fibre, dielectric, gel-free, ZBL, 100 m
434301UB4FD150M	OptiTap SST-Drop Indoor/Outdoor Cable Assembly, OptiTap to OptiTap, 1 fibre, dielectric, gel-free, ZBL, 150 m

*Pre-connectorized OptiSheath MPE closures are available in different configurations. Below a small selection of standard configurations. Other splitters (1:16) as well as other port configurations are possible, also with 4-, 8-, 12-fibre connectors. The closures are (for above ground applications) also offered in grey color.

Closures Pre-Connectorised With OptiTap Connectors**	
Part Number	Product Description
U3-8DDD-0DDD-6-1108-FW-EB	OptiSheath MPE, Multi Purpose Enclosure, 8 OptiTap Ports; including 6 MFT trays; 1×1:8 splitter; including grommets for cables 7–10mm; fibre routing kit, wall/pole mounting set; color black
U3-8DDD-8DDD-6-2108-FW-EB	OptiSheath MPE, Multi Purpose Enclosure, 16 OptiTap Ports; including 6 MFT trays; 2×1:8 splitters; including grommets for cables 7–10mm; fibre routing kit, wall/pole mounting set; color black
U3-8BGG-8BGG-4-PA16-FW-EB	OptiSheath MPE – Multi Purpose Enclosure, 16 OptiTap ports; 4 MFT trays; 16 pigtails SC/APC; grommets for cables 13–15mm 4×2×SST grommets; wall and pole mounting; color black

**Additional closure configurations available, please refer to our online catalogue for more details.



OptiSheath Closure with 16 OptiTap Connectors



OptiSheath MPE with 8 OptiTap Connectors

[Contents](#)

Outside Plant — Pre-Connectorised ECAM Connect Solutions

BPEO ECAM Connect		
Part Number	Product Description	Reference Number
UU003711254	BPEO S0 ECAM Connect 8 SC APC for 1S7 1D18 closure for above and below grade applications with external drop connectivity 8 ports SC APC. The closure is delivered with 2 one-slot splice trays (5 mm).	N501835A
UU003711304	BPEO S1 ECAM Connect 8SCAPC 1D18 closure for above- and below-grade applications with external drop connectivity 8 SC APC ports	N501836A
UU003711247	BPEO S1.5 ECAM Connect 12 SC APC 1S9.5 2S18 1D18 Closure for above and below grade applications with external drop connectivity 12 ports SC APC	N501837A

ECAM Connect with DualDrop Cable Pigtail	
Part Number	Product Description
004201JFCT2050MG	ECAM Connect with DualDrop™ Round Cable 50 m
004201JFCT2100MG	ECAM Connect with DualDrop™ Round Cable 100 m



BPEO S0 ECAM Connect with DualDrop cable



BPEO S1 ECAM Connect with DualDrop cable



BPEO S1.5 ECAM Connect with DualDrop cable

[Contents](#)

Outside Plant — Micro cable Solution

Corning's micro cabling solution solves the demand for today's unlimited bandwidth capacity and addresses escalating network duct congestion. Designed for installation in microcable systems using air-assisted installation methods, Corning's MiniXtend® cables are up to 50 percent smaller than standard loose tube cables and offer high-fibre-counts in a small cable diameter footprint.

Corning's innovative optical micro cabling solutions include **MiniXtend Cable binderless* FastAccess™ technology***, which has the same dimensions and fibre counts (12–144 fibres) as the original MiniXtend cable, but also features our time-saving binderless FastAccess technology.

This groundbreaking innovation in cable design eliminates the use of binder and waterblocking yarns and waterblocking tapes and enables up to 70 percent faster cable access and reduced risk of buffer tube damage.

MiniXtend HD Cable with binderless* FastAccess technology* is our highest-density micro cable featuring Corning® SMF-28® Ultra 200 fibre and delivering fibre counts up to 288 fibres. Our MiniXtend HD cable is up to 20 percent smaller than standard micro cables.

* Corning's proprietary binderless FastAccess Technology refers to the combination of a Corning FastAccess Technology jacket with an innovative technology used to bind cable construction through the manufacturing process, eliminating the use of binder yarns and waterblocking tapes.



Cable with FastAccess Technology



BPEO S1 IP68



KVZ Street Cabinet with Single Fibre Management

Outside Plant – Micro cable Solution

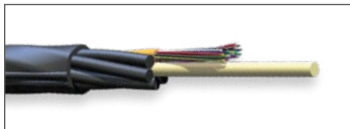
MiniXtend® Central Tube (CT) Cable*					
Part Number	Fibres	Product Description	Outer Cable Diameter	Inner Duct Diameter	BPEO Closure Type
004ZK4-13120A20	4	MiniXtend® CT Cable, 4 F, E9, Corning® SMF-28® Ultra, ITU-TG.652.D and ITU-TG.657A1, CT 1.7	2.5 mm	4 mm	Size 0
012ZK4-13120A20	12	MiniXtend CT Cable, 12 F, E9, SMF-28 Ultra, ITU G652.D ITU G657A1 CT 1.7	2.5 mm	4 mm	Size 0
024ZK4-13142A20	24	MiniXtend CT Cable, 24 F, E9, SMF-28 Ultra, 200 ITU-T G652.D ITU-T G657A1 CT 1.7	2.5 mm	4 mm	Size 0
036ZK4-13142A10	36	MiniXtend CT Cable, 36 F, E9, SMF-28 Ultra, 200 ITU-T G652.D ITU-T G657A1 CT 2.0	2.9 mm	4 mm	Size 0

MiniXtend Cable With Binderless** FastAccess™ Technology*					
Part Number	Fibres	Product Description	Outer Cable Diameter	Inner Duct Diameter	BPEO Closure Type
024ZM4-T3F22AMX	24	MiniXtend Cable, 2 × 12, E9, SMF-28 Ultra, ITU-TG.652.D and ITU-TG.657A1, LT 1.4	5.3 mm	8 mm	Size 0
048ZM4-T3F22AMX	48	MiniXtend Cable, 4 × 12, E9, SMF-28 Ultra, ITU G652.D ITU G657A1 LT 1.4	5.3 mm	8 mm	Size 0
096ZM4-T3F22AMX	96	MiniXtend Cable, 8 × 12, E9, SMF-28 Ultra, ITU G652.D ITU G657A1 LT 1.4	6.3 mm	8 mm	Size 0
144ZM4-T3F22AMX	144	MiniXtend Cable, 12 × 12, E9, SMF-28 Ultra, ITU G652.D ITU G657A1 LT 1.4	8.1 mm	10 mm	Size 1

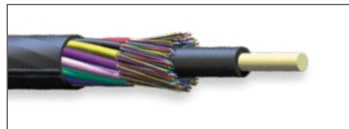
*Corning's proprietary binderless FastAccess technology refers to the combination of a Corning FastAccess technology jacket with an innovative technology used to bind cable construction through the manufacturing process, eliminating the use of binder yarns and waterblocking tapes.

MiniXtend HD Cable With Binderless FastAccess Technology*					
Part Number	Fibres	Product Description	Outer Cable Diameter	Inner Duct Diameter	BPEO Closure Type
144ZH4-Y3F40A20	144	MiniXtend HD Cable, 6 × 24, E9, SMF-28 Ultra, 200 ITU G652.D ITU G657A1 LT 1.7	6.3 mm	8 mm	Size 1
192ZH4-Y3F40A20	192	MiniXtend HD Cable, 8 × 24, E9, SMF-28 Ultra, 200 ITU G652.D ITU G657A1 LT 1.7	7.5 mm	10 mm	Size 1
216ZH4-Y3F40A20	216	MiniXtend HD Cable, 9 × 24, E9, SMF-28 Ultra, 200 ITU G652.D ITU G657A1 LT 1.7	8.0 mm	10 mm	Size 1
288ZH4-Y3F40A20	288	MiniXtend HD Cable, 12 × 24, E9, SMF-28 Ultra, 200 ITU G652.D ITU G657A1 LT 1.7	9.7 mm	13 mm	Size 1
288ZH4-S3F40A20	288	MiniXtend HD Cable 8 × 36 E9 SMF-28 Ultra 200 ITU G652.D ITU G657A1 LT 2.0	8.1 mm	10 mm	Size 1
432ZH4-S3F40A20	432	MiniXtend HD Cable 12 × 36 E9 SMF-28 Ultra 200 ITU G652.D ITU G657A1 LT 2.0	10.8 mm	14 mm	Size 2

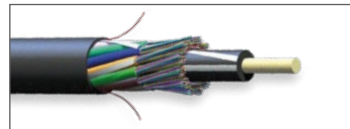
*Additional fibre counts, fibre types, and jacketing options available, please refer [to our online catalogue](#) for more details.



24-Fibre MiniXtend Cable with Binderless FastAccess Technology



144-Fibre MiniXtend Cable with Binderless FastAccess Technology



288-Fibre MiniXtend HD Cable with Binderless FastAccess Technology

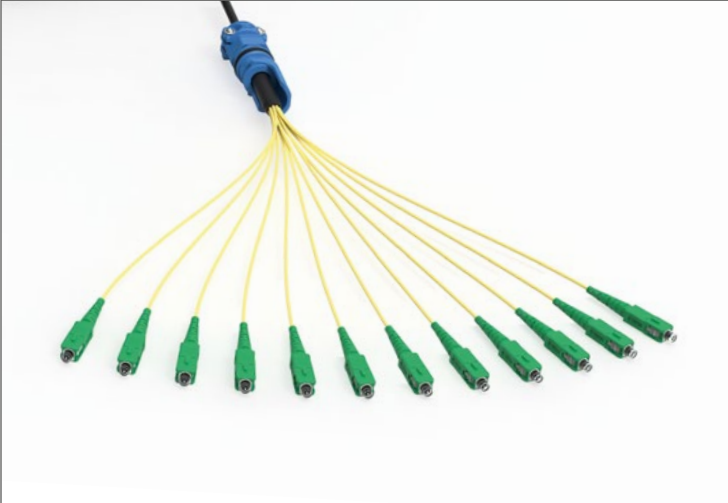


BPEO Size 1

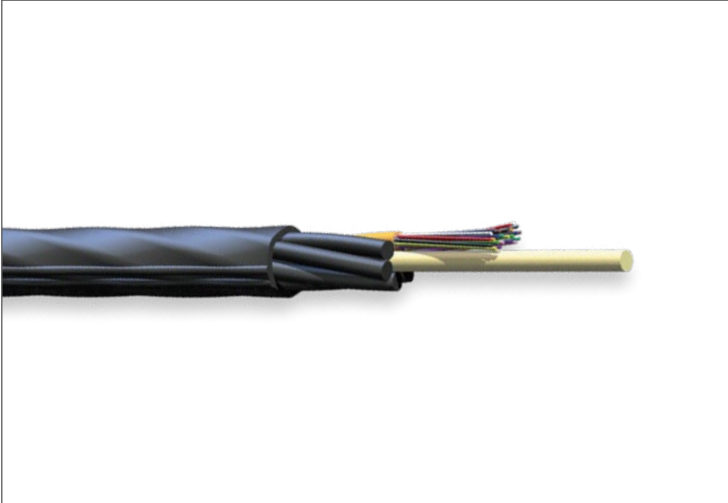
[Contents](#)

Outside Plant – Micro cable Solution

MiniXtend® Pigtail with SC APC Connector			
Part Number	Fibres	Product Description	Leg Length/OD
C004404G2MXF0FC050M	4	MiniXtend CT Ultra, 2.5 mm OD, connectorised with SC APC on one end, 50 m	0.5 m/0.9 mm
C004404G2MXF0FC100M	4	MiniXtend CT Ultra, 2.5 mm OD, connectorised with SC APC on one end, 100 m	0.5 m/0.9 mm
C004404G2MXF0FC150M	4	MiniXtend CT Ultra, 2.5 mm OD, connectorised with SC APC on one end, 150 m	0.5 m/0.9 mm
C004412G1MXF0FC050M	12	MiniXtend CT Ultra, 2.5 mm OD, connectorised with SC APC on one end, 50 m	0.5 m/0.9 mm
C004412G1MXF0FC100M	12	MiniXtend CT Ultra, 2.5 mm OD, connectorised with SC APC on one end, 100 m	0.5 m/0.9 mm
C004412G1MXF0FC150M	12	MiniXtend CT Ultra, 2.5 mm OD, connectorised with SC APC on one end, 150 m	0.5 m/0.9 mm
E004412G1MXF0NC050M	12	MiniXtend LT Ultra, 2.5 mm OD, connectorised with SC APC on one end, ECAM sealing, 50 m	0.35 m/2.0 mm
E004412G1MXF0NC100M	12	MiniXtend LT Ultra, 2.5 mm OD, connectorised with SC APC on one end, ECAM sealing, 100 m	0.35 m/2.0 mm
E004412G1MXF0NC150M	12	MiniXtend LT Ultra, 2.5 mm OD, connectorised with SC APC on one end, ECAM sealing, 150 m	0.35 m/2.0 mm



12F MiniXtend Pigtail with SC/APC



MiniXtend Cable with Binderless FastAccess Technology

[Contents](#)

Outside Plant – Micro cable Solution

BPEO Size 0		
Part Number	Product Description	Reference Number
FQ100082228	BPEO-S0-FDP-DROP Fibre Distribution Point for up to 12 drop cables and two branch cables; IP68. Organiser holds up to four splice trays	N501741A
UU009372267	BPEO-S0-FDP-BRANCH Fibre Distribution Point for up to eight drop cables (flat or round) and one branch cable; IP68. Organiser holds up to six splice trays	N501897A

BPEO Size 1		
Part Number	Product Description	Reference Number
FQ100080834	BPEO-S1-FDP-DROP Fibre Distribution Point for up to 16 drop cables and one express cable; IP68. Organiser holds up to 12 splice trays	N501714A
N502061A	BPEO-S1-EDP-DROP-7PAS Fibre Distribution Point for up to 8 drop cables, 2 branch cables and one express; IP68. Organiser holds up to 7 splice trays	N502061A
N502030A	BPEO-S1-FDP-BRANCH-7PAS Fibre Distribution Point for up to 10 drop cables and one express cable; IP68. Organiser holds up to 7 splice trays	N502030A
N502032A	BPEO-S1-CDP-7PAS Cable Distribution Point for branch cables and one express cable; Organiser holds up to 7 splice trays	N502032A
N502031A	BPEO-S1-EDP-7PAS End Distribution Point for one express and four branch cables. Organiser holds up to 7 splice trays	N502031A
FQ100068185	BPEO-S1-EOC End-of-cable closure for up to four cables; IP68. Organiser holds up to 12 splice trays	N501487A

BPEO Size 1.5		
Part Number	Product Description	Reference Number
UU004973481	BPEO-S1.5-FDP-BRANCH Local Convergence Point for up to 13 drop cables and two branch cables; IP68. Organiser holds up to 12 splice trays	N501844A
UU007740473	BPEO-S1.5-FDP-DROP Local Convergence Point for up to 25 drop cables and two branch cables; IP68. Organiser holds up to 12 splice trays	N501846A



BPEO S1 IP68



BPEO S0 IP68



BPEO S1.5 IP68

[Contents](#)

Outside Plant – Micro cable Solution

Double ECAM*		
Part Number	Product Description	Reference Number
FQ100081857	ECAM D18 – Main Body for cables from 6–18 mm diameter	N721162A
FQ100081931	ECAM D18 – Double-Entry Cable Sealing Kit for cables from 6–9 mm diameter	N721163A
FQ100081949	ECAM D18 – Double-Entry Cable Sealing Kit for cables from 9–12 mm diameter	N721164A
FQ100081956	ECAM D18 – Double-Entry Cable Sealing Kit for cables from 12–15 mm diameter	N721165A
FQ100081964	ECAM D18 – Double-Entry Cable Sealing Kit for cables from 15–18 mm diameter	N721166A

*For the Double ECAMs D6–18 pls. order the housing (FQ100081857) and order the sealing kit depending on the cable diameter (from 6 to 18 mm).

Single ECAM		
Part Number	Product Description	Reference Number
N721240A	ECAM S6 – Single-Entry Cable Sealing for cables from 4–6 mm diameter	N721240A
UU003030390	ECAM S7 – Single-Entry Cable Sealing for cables from 3–7 mm diameter	N721190A
UU003028675	ECAM S9.5 – Single-Entry Cable Sealing for cables from 3.5–9.5 mm diameter	N721191A
FQ100083556	ECAM S12 – Single-Entry Cable Sealing for cables from 4–12 mm diameter	N721126A
FQ100079562	ECAM S18 – Single-Entry Cable Sealing for cables from 5–18 mm diameter	N721127A

Splice Trays**		
Part Number	Product Description	Reference Number
FQ100068284	BPEO-UZ-12 Can hold 12 fusion splices (1 × 12)	N541106A
UU009055516	BPEO-BZ-24 Can hold 24 fusion splices in two different zones (1 × 12 and 1 × 12)	N541238A
FQ100074373	BPEO-SD-UNIVERSAL Can hold any combination between: 12 fusion splices; 12 Corning® Fibriok® splices 2540G (2 × 6); 6 × Fibriok splices 2529 (1 × 6); 12 PLC splitter (4 × 4 × 40 mm or 4 × 4 × 50 mm or 4 × 7 × 50 mm); 6x PLC splitter (4 × 7 × 50 mm)	N541121A

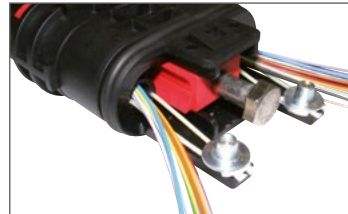
**For the Double ECAM other splice trays as well as splitter solutions are available on request



Single ECAM S9.5 Single Cable Entry Kit



Splice Trays



Double D6–18 ECAM Body For Housing Double Cable Entry Kits



More BPEO Closures configurations –
[please visit our website.](#)

[Contents](#)

Outside Plant – Micro cable Solution

KVZ Cabinet	
Part Number	Product Description
S46998-A0006-A075	KVZ 82 Street Cabinet, grey polycarbonate, base, plinth mount, pivoting insert, for 144 SC (6 F) or 72 SE (12 F) trays, no splice trays included
KVZ92-RAL7038-WW	Network Distribution Point in KVZ 92, grey polycarbonate; swing frame for 66 SC (6 F) or 33 SE (12 F) maximum cassettes

KVZ Cabinet Accessories	
Part Number	Product Description
KVZ-STRN-12-7-WW	Strain-Relief for 12 ducts (7/4 mm)
KVZ-STRN-12-10-WW	Strain-Relief for 12 ducts (10/6 mm)
KVZ-STRN-12-12-WW	Strain-Relief for 12 ducts (12/8 mm)
KVZ-STRN-8-6-MINI-WW	Strain-Relief to fix up to 8 minicables (6.5 mm)
KVZ92-STRN-24-25-WW	Strain-Relief Plate for up to 24 minicables (2.5 mm)
KVZ92-STRN-36-25-WW	Strain-Relief Plate for up to 36 minicables (2.5 mm)
KVZ92-STRN-GRV-WW	Strain-Relief Plate for up to 20 buffer tube protection (5 mm)
KVZ92-STRN-hbrd-WW	Combined Strain-Relief plate for up to 6 microcables (2.5 mm) and 8 buffer tube protection (5 mm)
KVZ-CLMP-12-18-S	Strain-Relief to fix 1 cable (12–18 mm)
S46998-A5-R171	Buffer Tube Protection 15 mm, spiral wrap, includes tool, 50 m
S46998-A5-R177	Buffer Tube Protection 8 mm, spiral wrap, includes tool, 100 m
SHR-05-6NB	Buffer Tube Protection 5 mm, includes tool, 100 m



KVZ Street Cabinet Splice Area



GF-NVT in KVZ92

[Contents](#)



Outside Plant — Duct Solution

Ducts (or conduits) offer a highly protective environment for fibre-optic cables. They are typically buried, and then the cables are air-blown, jetted, pulled, or pushed into the duct.

The most commonly deployed dielectric outdoor cable design is ALTOS™ loose tube cable, which can be blown, jetted, or pulled into a duct or conduit that will protect the cable during its installed lifetime. Dielectric loose tube cables are suitable for lashed aerial and duct installations.

[Contents](#)

Outside Plant – Duct Solution

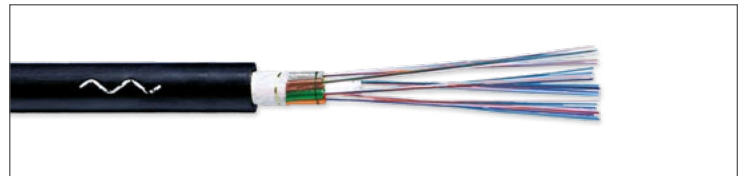
SST™ Central Tube Dielectric Armour Outdoor Cable			
Part Number	Fibres	Product Description	Outer Diameter
004EEG-13122A20	4	SST™ Central Tube Dielectric Armour Outdoor Cable, 4 F, E9, Corning® SMF-28®, ITU-TG. 652.D, CT 3.0	6.4 mm
012EEG-13122A20	12	SST Central Tube Dielectric Armour Outdoor Cable, 4 F, E9, SMF-28, ITU-TG. 652.D, CT 3.0	6.4 mm

SST Pigtail to be Connectorised in BPEO closures			
Part Number	Fibres	Product Description	Leg Length /OD
C002204JB4FD0CC050M	4	SST LBL, connectorized with LC APC on one end, 50 m	0.35 m/0.9 mm
C002204JB4FD0CC100M	4	SST LBL, connectorized with LC APC on one end, 100 m	0.35 m/0.9 mm
C002204JB4FD0CC150M	4	SST LBL, connectorized with LC APC on one end, 150 m	0.35 m/0.9 mm
C004412GB4FD0WC050M	12	SST Ultra, connectorized with SC APC on one end, 50 m	1 m/2.0 mm
C004412GB4FD0WC100M	12	SST Ultra, connectorized with SC APC on one end, 100 m	1 m/2.0 mm
C004412GB4FD0WC150M	12	SST Ultra, connectorized with SC APC on one end, 150 m	1 m/2.0 mm

ALTOS™ Loose Tube Outdoor Cable			
Part Number	Fibres	Product Description	Outer Diameter
024EP4-T3122P20	24	ALTOS™ Loose Tube Outdoor Cable, 2 × 12, E9, SMF-28, ITU-TG652.D, LT 2.0	8.3 mm
048EP4-T3122P20	48	ALTOS Loose Tube Outdoor Cable, 4 × 12, E9 SMF-28, ITU G652.D, LT 2.0	8.3 mm
096EP4-T3122P20	96	ALTOS Loose Tube Outdoor Cable, 8 × 12, E9 SMF-28, ITU G652.D, LT 2.0	9.5 mm
144EP4-T3122P20	144	ALTOS Loose Tube Outdoor Cable, 12 × 12, E9 SMF-28, ITU G652.D, LT 2.0	12.2 mm
192EP4-T3122P20	192	ALTOS Loose Tube Outdoor Cable, 16 × 12, E9 SMF-28, ITU G652.D, LT 2.0	12.3 mm
216EP4-T3122P20	216	ALTOS Loose Tube Outdoor Cable, 18 × 12, E9 SMF-28, ITU G652.D, LT 2.0	12.3 mm
288EP4-T3122P20	288	ALTOS Loose Tube Outdoor Cable, 24 × 12 E9 SMF-28, ITU G652.D, LT 2.0	14.2 mm



SST Central Tube Dielectric Armour Outdoor Cable



ALTOS Loose Tube Outdoor Cable

[Contents](#)

Outside Plant – Duct Solution

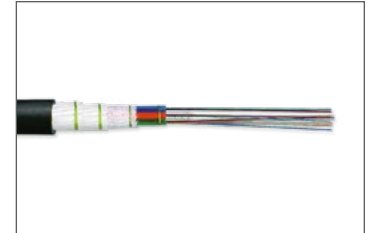
ALTOS™ Loose Tube Dielectric Armour Outdoor Cable*			
Part Number	Fibres	Product Description	Outer Diameter
024EPG-T3122P20	24	2 × 12 ALTOS LT Cable, E9, SMF-28®, ITU G652.D, LT 2.0	8.7 mm
048EPG-T3122P20	48	4 × 12 ALTOS LT Cable, E9, SMF-28®, ITU G652.D, LT 2.0	8.7 mm
096EPG-T3122P20	96	8 × 12 ALTOS LT Cable, E9, SMF-28®, ITU G652.D, LT 2.0	9.9 mm
144EPG-T3122P20	144	12 × 12 ALTOS LT Cable, E9, SMF-28®, ITU G652.D, LT 2.0	12.6 mm
192EPG-T3122P20	192	16 × 12 ALTOS LT Cable, E9, SMF-28®, ITU G652.D, LT 2.0	12.9 mm
216EPG-T3122P20	216	18 × 12 ALTOS LT Cable, E9, SMF-28®, ITU G652.D, LT 2.0	12.9 mm
288EPG-T3122P20	288	24 × 12 ALTOS LT Cable, E9, SMF-28®, ITU G652.D, LT 2.0	14.7 mm

*Additional fibre counts and jacketing options available, please refer to our online catalogue for more details.

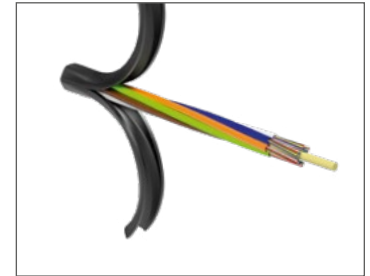
ALTOS Loose Tube, Fully Dry Outdoor Cable with SMF-28® Ultra Fibre with binderless* FastAccess™ technology			
Part Number	Fibres	Product Description	Outer Diameter
012ZP4-T3F20D20	12	1 × 12 Gel-Free ALTOS LT 2.0 HDPE	8.5 mm
024ZP4-T3F20D20	24	2 × 12 Gel-Free ALTOS LT 2.0 HDPE	8.5 mm
048ZP4-T3F20D20	48	4 × 12 Gel-Free ALTOS LT 2.0 HDPE	8.5 mm
072ZP4-T3F20D20	72	6 × 12 Gel-Free ALTOS LT 2.0 HDPE	8.5 mm
096ZP4-T3F20D20	96	8 × 12 Gel-Free ALTOS LT 2.0 HDPE	9.7 mm
144ZP4-T3F20D20	144	12 × 12 Gel-Free ALTOS LT 2.0 HDPE	12.4 mm

*Corning's proprietary binderless FastAccess™ technology refers to the combination of a Corning FastAccess technology jacket with an innovative technology used to bind cable construction through the manufacturing process, eliminating the use of binder yarns and waterblocking tapes.

DualDrop™ Pigtailed with SC APC Connector to be Connectorised in BPEO Closures			
Part Number	Fibres	Product Description	Leg Length / OD
C004401JFDT30WC050M	1F	DualDrop Corning® ClearCurve® LBL, connectorised with SC APC on one end, 50 m	1 m/2.0 mm
C004401JFDT30WC100M	1F	DualDrop ClearCurve LBL, connectorised with SC APC on one end, 100 m	1 m/2.0 mm
C004401JFDT30WC150M	1F	DualDrop ClearCurve LBL, connectorised with SC APC on one end, 150 m	1 m/2.0 mm



ALTOS Loose Tube Dielectric Armour Outdoor Cable



ALTOS Loose Tube, 6 × 12 F, Peeled Off with FastAccess Technology



1F DualDrop Pigtail with SC/APC



More about ALTOS™ Gel-Free Loose Tube Cable with Binderless FastAccess™ Technology – [please visit our website.](#)

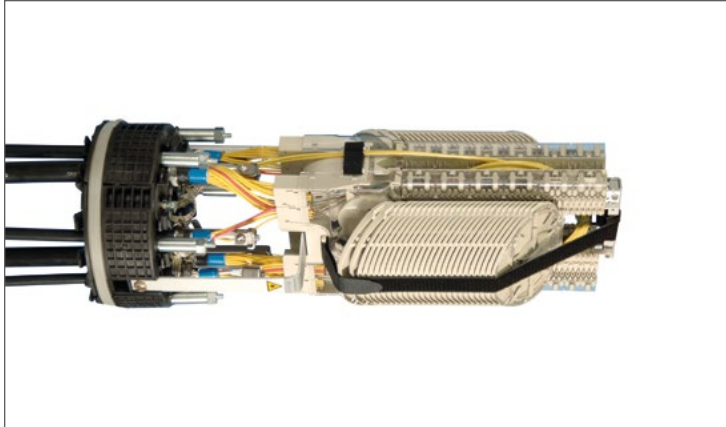
[Contents](#)

Outside Plant – Duct Solution

FRECAP Closures*	
Part Number	Product Description
S46998-A19-A10	FRECAP Gel-Sealed Dome Closure, size 9–20, for 48 SC, 6 F or 24 SE (12 F) trays, standard buffer tube storage (5 × 3.6 m), no splice trays included
S46998-A19-A11	FRECAP Gel-Sealed Dome Closure, size 9–24, for 72 SC, 6 F or 36 SE (12 F) trays, standard buffer tube storage (6 × 3.8 m), no splice trays included
S46998-A19-A12	FRECAP Gel-Sealed Dome Closure, size 9–28, for 120 SC, 6 F or 60 SE (12 F) trays, with standard buffer tube storage (8 × 4.1 m), no splice trays included

FRECAP Closure Accessories*	
Part Number	Product Description
S46998-A19-R23	Wall/Pole Mounting Device
S46998-A19-R22	Table Mounting Device
S46998-A19-R21	Cable Entry For 1 × 6–25 mm Cable
S46998-A19-R40	Multicable Entry 4-Fold, for 4 × 3.5–8.5 mm cables
S46998-A0019-R067	Minicable and Duct Entry Kit, 1-fold, for 10.0 mm ducts, 3.5–8.5 mm cables
S46998-A19-R51	Micro Cable and Duct Entry Kit, 6-fold, for 7.0 mm ducts, 2.3–2.7 mm cables

*Additional closure configurations and accessories available, please refer to [our online catalogue](#) for more details.



FRECAP Gel-Sealed Dome Closure



Wall/Pole Mounting

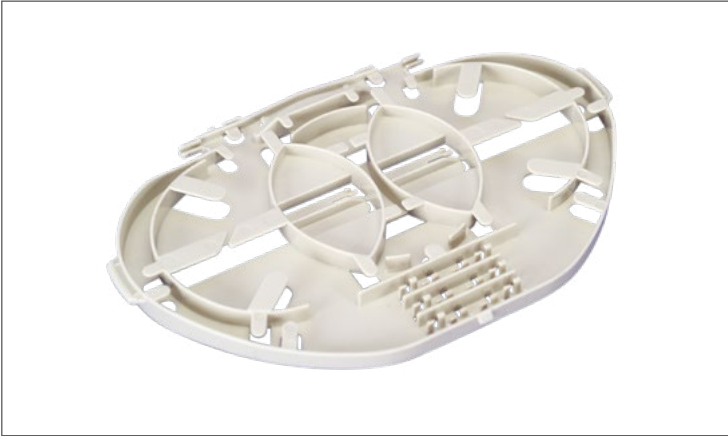
[Contents](#)

Outside Plant – Duct Solution

Generic Accessories	
Part Number	Product Description
S46998-A2-R93	SC Splice Tray for 6 crimp splice protectors, pack of 6
S46998-A2-R94	SC Splice Tray for 6 heat-shrink splice protectors, pack of 6
S46998-A2-R152	Cover for SC splice tray
S46998-A2-R95	SE Splice Tray for 12 crimp splice protectors, pack of 3
S46998-A2-R96	SE Splice Tray for 12 heat-shrink splice protectors, pack of 3
S46998-A2-R153	Cover For SE Splice Tray
S46998-A2-R230	SE Tray with 1:2 splitter
S46998-A2-R231	SE Tray with 1:4 splitter
S46998-A2-R232	SE Tray with 1:8 splitter
S46998-A2-R233	SE Tray with 1:16 splitter
S46998-A2-R234	SE Tray with 1:32 splitter
HSP-60S100-1	Heat-Shrink Splice Protector 60 mm, pack of 100
CSP-1	Crimp Splice Protector, pack of 150



Single Circuit (SC) Splice Tray



Single Element (SE) Splice Tray

Outside Plant – Duct Solution

BPEO Size 2		
Part Number	Product Description	Reference Number
FQ100068227	BPEO-S2-CDP Local convergence point for one express cable (D27) and six branch cables (S18). Organizer holds up to 28 splice trays	N501491A
FQ100068235	BPEO-S2-EDP End distribution point for up to one express cable (D27) and 12 branch cables (2 x S18; 10 x S12). Organizer holds up to 28 splice trays	N501492A
N501852A	BPEO-S2-BDP Branch distribution point for up to one express cable (D18) and 16 branch cables (S12). Organizer holds up to 28 splice trays	N501852A

BPEO Size 3		
Part Number	Product Description	Reference Number
FQ100068250	BPEO-S3-CDP Local convergence point for one express cable (D27) and six branch cables (S18). Organizer holds up to 48 splice trays	N501494A
FQ100068268	BPEO-S3-EDP End distribution point for up to one express cable (D27) and 12 branch cables (2 x S18M 10 x S12). Organizer holds up to 48 splice trays	N501495A
N501998A	BPEO-S3-BDP Branch distribution point for up to one express cable (D18) and 16 (S12) branch cables. Organizer holds up to 48 splice trays	N501998A

Single ECAM*		
Part Number	Product Description	Reference Number
N721240A	ECAM S6 – Single-Entry Cable Sealing for cables from 4–6 mm diameter	N721240A
UU003030390	ECAM S7 – Single-Entry Cable Sealing for cables from 3–7 mm diameter	N721190A
UU003028675	ECAM S9.5 – Single-Entry Cable Sealing for cables from 3.5–9.5 mm diameter	N721191A
FQ100083556	ECAM S12 – Single-Entry Cable Sealing for cables from 4–12 mm diameter	N721126A
FQ100079562	ECAM S18 – Single-Entry Cable Sealing for cables from 5–18 mm diameter	N721127A

Double ECAM		
Part Number	Product Description	Reference Number
FQ100081857	ECAM D18 – Main Body for cables from 6–18 mm diameter	N721162A
FQ100081931	ECAM D18 – Double-Entry Cable Sealing Kit for cables from 6–9 mm diameter	N721163A
FQ100081949	ECAM D18 – Double-Entry Cable Sealing Kit for cables from 9–12 mm diameter	N721164A
FQ100081956	ECAM D18 – Double-Entry Cable Sealing Kit for cables from 12–15 mm diameter	N721165A
FQ100081964	ECAM D18 – Double-Entry Cable Sealing Kit for cables from 15–18 mm diameter	N721166A

*For the Double ECAMs D6–18 pls. order the housing (FQ100081857) and order the sealing kit depending on the cable diameter (from 6 to 18 mm).

Splice Trays**		
Part Number	Product Description	Reference Number
FQ100068284	BPEO-UZ-12 Can hold 12 fusion splices (1 x 12) N541106A	N541106A
UU009055516	BPEO-BZ-24 Can hold 24 fusion splices in two different zones (1 x 12 and 1 x 12)	N541238A
FQ100074373	BPEO-SD-UNIVERSAL Can hold any combination between: 12 fusion splices; 12 Corning® Fibriok® splices 2540G (2 x 6); 6 x Fibriok splices 2529 (1 x 6); 12 PLC splitter (4 x 4 x 40 mm or 4 x 4 x 50 mm or 4 x 7 x 50 mm); 6x PLC splitter (4 x 7 x 50 mm)	N541121A

**Other splice trays as well as splitter solutions are available on request



Closure BPEO Size 2



External Cable Assembly Module ECAM



ECAM Multi-Entry

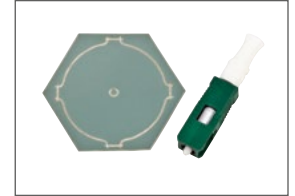
Outside Plant — Corning® Crimplok™ + Connectors

Crimplok™ + Connectors help enable fast, on-site installation of 250 µm, 900 µm, and 1.6 to 3.0 mm single-mode and cable.

- One piece, pre-assembled design
- No splice, no gel
- Integrated mechanical grip element
- No loose parts
- Ideal for FTTP drop termination
- Quick installation, no electrical power
- Quick field polish with Crimplok+ nano finisher
- Polishing film comes with each connector
- Activation tool included
- SC PC and SC APC
- Compatible with all SM fibres



Crimplok+ Connector



Crimplok+ SC APC

Specifications		
	Single-Mode 8700-AT/UPC	Single-Mode 8700-AT/APC
Insertion loss (dB) typical	0.2	0.25
Reflectance (dB) typical at room temperature	< -40	< -65
Reflectance (dB) maximum over operating temperature range	< -35	< -60
Operating temperature range (°C)	-40° to 75°	-40° to 75°
Storage temperature (°C)	-40° to 85°	-40° to 85°
Connector identification	Blue/White	Green/White
Field-termination kit	8765T-UPC	N301942A
Materials	Connector Ferrule	Zirconia ceramic
	Connector Housing and Body	Engineered resin
	Boot	Thermoplastic elastomer

[Contents](#)

Outside Plant – Corning® Crimplok™+ Connectors

Crimplik + Connectors		
Part Number	Product Description	Reference Number
80611622004	Crimplik™+ Connector SC APC SM 250/900 µm with activation tool	8700-AT/APC
80611622087	Crimplik+ Connector SC UPC SM 250/900 µm with activation tool	8700-AT/UPC
80611622335	Crimplik+ Connector SC APC SM 250/900 µm with activation tool and Easy Cleaver	8700-AT/APC/C
80611622343	Crimplik+ Connector SC UPC SM 250/900 µm with activation tool and Easy Cleaver	8700-AT/UPC/C

Crimplik + Connector Kits and Tools		
Part Number	Product Description	Reference Number
80611621907	Crimplik+ SC APC Activation Tool	8765-AT/APC
80611621998	Crimplik+ SC UPC Activation Tool	8765-AT/UPC
UU009430503	Crimplik+ SC APC Connector Installation Kit Compact	N301942A
80611622459	Crimplik+ SC UPC Connector Installation Kit	8765T-UPC
80611380751	Nano Finishing Tool for Crimplik+ UPC	8765-NF/UPC
80611380967	Nano Finishing Tool for Crimplik+ APC	8765-NF/APC



Crimplik+ SC APC Connector Kit



Crimplik+ Nano Finisher

[Contents](#)



Multidwelling Unit (MDU) Solutions

Regardless of MDU Scenario, Corning Has Your Fibre Solution.

Whether you're servicing a business or a residence, there's no one-size-fits-all answer for your multidwelling unit (MDU) needs. You need a customised solution and a collaborator with the expertise to simplify your challenges, so you can focus on delivering the services and applications that your subscribers expect. Other variables like aesthetics, labor skill level, and rights-of-way access will factor into your architecture

and product selection. Choose a supplier that knows your environment and has manufacturing expertise that can help you choose flexible, simplified product sets. What you will find on the following pages are a range of solutions that address the wide variety of environments you may encounter in the field, backed by the expertise we've gained in more than 15 years of global deployments.

[Contents](#)

MDU Solutions Overview

Inside the Basement

Building access terminals (BAT) are the transitioning point for the outside plant (OSP) network to the customer premise, providing an access point for the operator. OSP cables are terminated here and changed to flame retardant indoor cables. The terminal can house splitters for passive optical network (PON) structures.

At the Staircase Level

Depending on the number of customers served and the number of floor levels, you could run a single drop cable to each apartment (direct drop) or consolidate several fibres and/or cables to save space and installation time. These cables vary in numbers of fibre and could be pre-connectorised at the basement and/or the tap points to meet your needs.

At the Floor Level

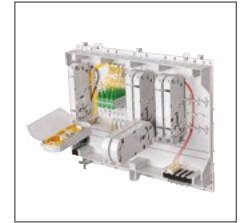
Cable at this section of the network is typically deployed when the customer gets connected. Often, there are not sufficient ducts in place. The Clear Track Hallway Fibre Pathway and Clear Track ILU Fibre Pathway allow for a secure, fast, and easy way to connect the customer, using adhesives to install the ducts and run the drop cable to each apartment.

Inside the Living Unit

Corning provides you with cable, outlet, and connectivity solutions that are optimised to reduce installation time, allowing you to focus on servicing the customer or upselling additional features.



BAT Box Size S



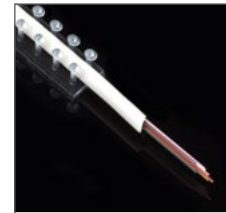
Preconfigured BAT XL Wall Box



PBPO NG



NPC SC Connectors



Clear Track Hallway Fibre Pathway with Clear Track 12-Fibre Micro Module



Clear Track Hallway Fibre Pathway



Preconfigured SWT with Drop Cable in Paper Spool



Shuttered SC APC Patch Cord

[Contents](#)

Corning® ClearCurve® ZBL Optical Fibre

Corning® ClearCurve® ZBL optical fibre delivers the best macrobending performance in the industry while maintaining compatibility with current optical fibres, equipment, practices, and procedures. This full-spectrum single-mode optical fibre, when subjected to smaller radii bends, experiences virtually no signal loss. ClearCurve ZBL fibre exceeds the most stringent bend-performance requirements of ITU-T recommendation G.657.A2 and B3 and G.652.D and the installed base of Corning® SMF-28e® and SMF-28e+® fibres. Network planners and designers are now able to design optical fibre into much more challenging installations and environments.



ZBL Fibre Spool

Maximum Attenuation	
Wavelength (nm)	Maximum Value* (dB/km)
1310	≤ 0.35
1383**	≤ 0.35
1490	≤ 0.24
1550	≤ 0.20
1625	≤ 0.23

*Alternate attenuation offerings available upon request.

**Attenuation values at this wavelength represent post-hydrogen aging performance.

Macrobend Loss			
Mandrel Radius (mm)	Number of Turns	Wavelength (nm)	Induced Attenuation*** (dB)
5	1	1550	≤ 0.10
5	1	1625	≤ 0.30

***The induced attenuation due to fibre wrapped around a mandrel of a specified diameter.

Mode-Field Diameter	
Wavelength (nm)	MFD (µm)
1310	8.6 ± 0.4
1550	9.65 ± 0.5

Polarisation Mode Dispersion (PMD)	
	Value (ps/√km)
PMD Link Design Value	≤ 0.06****
Maximum Individual Fibre PMD	≤ 0.2

**** Cabled values might differ, depending on cable design, please refer to cable datasheets for details. Complies with IEC 60794-3: 2001, Section 5.5, Method 1, (m = 20, Q = 0.01 %), September 2001.

MDU Solutions – Inside the Basement Level

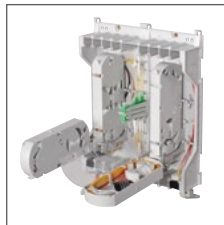
Building Access Terminal (BAT) Wall Boxes Preconfigured	
Part Number	Product Description
BAT-S03B322R5G-WW	BAT S Wall Boxes Preconfigured for 3 Flats, 2 × LC APC duplex, 3 LC APC pigtails, splice tray
BAT-M04B31104S225G-WW	BAT M Wall Boxes Preconfigured for 4 Flats, 2 × LC APC duplex, 1 splitter 1 : 4, strain-relief for 4 cables
BAT-M08B32104S225G-WW	BAT M Wall Boxes Preconfigured for 5–8 Flats, 4 × LC APC duplex, 2 splitter 1 : 4, strain-relief for 8 cables
BAT-L12B33104S225G-WW	BAT L Wall Boxes Preconfigured for 9–12 Flats, 6 × LC APC duplex, 3 splitter 1 : 4, strain-relief for 12 cables
BAT-L16B34104S225G-WW	BAT L Wall Boxes Preconfigured for 13–16 Flats, 8 × LC APC duplex, 4 splitter 1 : 4, strain-relief for 16 cables
BAT-X20B35104S225G-WW	BAT XL Wall Boxes Preconfigured for 17–20 Flats, 10 × LC APC duplex, 5 splitter 1 : 4, strain-relief for 20 cables
BAT-X64B32132S225G-WW	BAT XL Wall Boxes Preconfigured for 41–64 Flats, 32 × LC APC duplex, 2 splitter 1 : 32, strain-relief for 64 cables

Building Access Terminal (BAT) Modular	
Part Number	Product Description
BAT-SGE-ST001	BAT Box Size S, grey, EMKA lock, 3 sealing foams, 4 cable strain reliefs, 2 splice trays with 2 heat-shrink and crimp splice holders
BAT-MGE-ST001	BAT Box Size M, grey, EMKA lock, 3 sealing foams, 9 cable strain-reliefs
BAT-LGE-ST001	BAT Box Size L, grey, EMKA lock, 1 sealing foam, 16 cable strain-reliefs
BAT-XGE-ST001	BAT Box Size XL, grey, EMKA lock, 1 sealing foam, 16 cable strain-reliefs

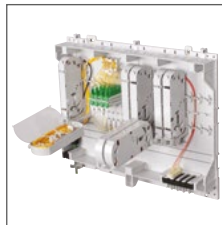
Building Access Terminal (BAT) Accessories	
Part Number	Product Description
BAT-CC8-10	BAT Strain-Relief for cables with aramid yarns up to 8 mm, pack of 10
BAT-CFX-01	BAT Sealing Module XL, 2 cables up to 12 mm
BAT-CFY-01	BAT Sealing Module XL/L, 4 cables up to 8 mm
BAT-CFZ-01	BAT Sealing Module XL/L, 16 cables up to 8 mm
BAT-CTP-01	PG Gland, 6–18 mm
BAT-F-01	BAT Fusion Splice Module
BAT-K2222-104-1	BAT Splitter Module, LC APC to LC APC, 1:4
BAT-K2222-108-1	BAT Splitter Module, LC APC to LC APC, 1:8
BAT-K2222-116-1	BAT Splitter Module, LC APC to LC APC, 1:16
BAT-K2222-132-1	BAT Splitter Module, LC APC to LC APC, 1:32
BAT-K4444-104-1	BAT Splitter Module, SC APC to SC APC, 1:4
BAT-K4444-108-1	BAT Splitter Module, SC APC to SC APC, 1:8
BAT-K4444-116-1	BAT Splitter Module, SC APC to SC APC, 1:16
BAT-K4444-132-1	BAT Splitter Module, SC APC to SC APC, 1:32
BAT-PLY-22	BAT Patch Module, 4 LC APC duplex adapters, with pigtails
BAT-PLY-44	BAT Patch Module, 4 SC APC simplex adapters, with pigtails
BAT-R-01	BAT Cable Routing Guide



BAT Box Size S



Preconfigured BAT M Wall Box



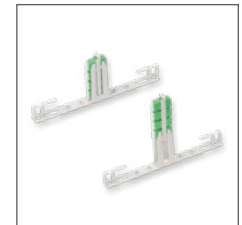
Preconfigured BAT XL Wall Box



BAT Cover



BAT Splice Module



BAT Patch Module

[Contents](#)

MDU Solutions – Inside the Basement Level

PBO Connect Optical Distribution Terminal	
Part Number	Product Description
PBOCS-00-00-0000	PBO for Splicing
PBOCS-08-6C-ADPT	PBO with 8 SCAPC adapters
PBOCS-08-6C-PGGB	PBO with 8 SCAPC adapters and 8 SCAPC Pigtails Grade B
PBOCS-08-6C-1108	PBO with 8 SCAPC adapters and pre-connectorized splitter 1:8 SCAPC
PBOCS-04-B3-1104	PBO with 2 LCAPC DX adapters and pre-connectorized splitter 1:4 LCAPC
PBOCS-04-B3-PGTL	PBO with 2 LCAPC DX adapters and 4 LCAPC Pigtails Grade B



PBO Connect Optical Distribution Terminal



PBO Connect Optical Distribution Terminal with Splice trays and 8 SC APC adapter

MDU Solutions – At the Staircase Level

Indoor Cables				
Part Number	Fibres	Product Description	CPR Class	Outer Diameter
001Z3Z-36525EWH	1	2.4 mm Drop, Indoor, 1 F Ultra, white jacket	Eca	2.4 mm
001U3Z-32525EB2	1	2.4 mm Drop, Indoor, 1 F ZBL, white jacket, reel-in-a-box, 300 m	Dca-s1a,d0,a1	2.4 mm
001U3Z-32925EB2	1	4.8 mm Drop, Indoor, 1 F ZBL, white jacket, reel-in-a-box, 300 m	Dca-s1a,d0,a1	4.8 mm
002U8Z-36125EB2	2	MIC™ Tight Buffer, Indoor, 2 F ZBL, white jacket, reel-in-a-box, 300 m	Cca-s1a,d0,a1	3.8 mm
004Z8Z-36125EWH	4	MIC Tight Buffer, Indoor, 4 F Ultra, white jacket	Cca-s1a,d1,a1	4.2 mm
004U8Z-36125EB2	4	MIC Tight Buffer, Indoor, 4 F ZBL, white jacket, reel-in-a-box, 300 m	Cca-s1a,d1,a1	4.2 mm
012Z8Z-36125EWH	12	MIC Tight Buffer, Indoor, 12 F Ultra, white jacket	Cca-s1a,d1,a1	6.2 mm
012U8Z-36125EB2	12	MIC Tight Buffer, Indoor, 12 F ZBL, white jacket, reel-in-a-box, 300 m	Cca-s1a,d1,a1	6.2 mm
024Z8Z-36125EWH	24	MIC Tight Buffer, Indoor, 24 F Ultra, white jacket	Cca-s1a,d1,a1	8.0 mm
024U8Z-36125EB2	24	MIC Tight Buffer, Indoor, 24 F ZBL, white jacket, reel-in-a-box 300 m	Cca-s1a,d1,a1	8.0 mm

Indoor/Outdoor Multipurpose Cables				
Part Number	Fibres	Product Description	CPR Class	Outer Diameter
002Z8J-36125ESL	2	FREEDM™ Tight Buffer, Indoor/Outdoor, 2 F Ultra, grey jacket	Cca-s1a,d1,a1	6.2 mm
002U8J-36125EB2	2	FREEDM Tight Buffer, Indoor/Outdoor, 2 F ZBL, grey jacket, reel-in-a-box, 300 m	Cca-s1a,d1,a1	6.2 mm
004Z8J-36125ESL	4	FREEDM Tight Buffer, Indoor/Outdoor, 4 F Ultra, grey jacket	Cca-s1a,d1,a1	6.2 mm
004U8J-36125EB2	4	FREEDM Tight Buffer, Indoor/Outdoor, 4 F ZBL, grey jacket, reel-in-a-box 300 m	Cca-s1a,d1,a1	6.2 mm
012Z8J-36125ESL	12	FREEDM Tight Buffer, Indoor/Outdoor, 12 F Ultra, grey jacket	Cca-s1a,d1,a1	8.7 mm
012U8J-36125EB2	12	FREEDM Tight Buffer, Indoor/Outdoor, 12 F ZBL, grey jacket, reel-in-a-box, 300 m	Cca-s1a,d1,a1	8.7 mm
024Z8J-36125ESL	24	FREEDM Tight Buffer, Indoor/Outdoor, 24 F Ultra, grey jacket	Cca-s1a,d1,a1	10.3 mm
024U8J-36125EB2	24	FREEDM Tight Buffer, Indoor/Outdoor, 24 F ZBL, grey jacket, reel-in-a-box, 300 m	Cca-s1a,d1,a1	10.3 mm

Available in other fibre counts, please refer to our online catalogue for more details.



Reel-in-a-Box Packaging



More about construction products regulations (CPR) – [please visit our website.](#)

[Contents](#)

MDU Solutions – At the Staircase Level

SFU/MDU Single-Fibre Patch Cords (Terminated On Both Ends, White Jacketing)			
Part Number	Connectors	Product Description	Length
222201U3Z31001M	LC APC-LC APC	LC APC to LC APC Patch Cord, 1 F, tight-buffered cable, LSZH™, 2.9 mm legs, Corning® ClearCurve® R5 ZBL	1 m
222201U3Z31002M	LC APC-LC APC	LC APC to LC APC Patch Cord, 1 F, tight-buffered cable, LSZH, 2.9 mm legs, ClearCurve R5 ZBL	2 m
222201U3Z31003M	LC APC-LC APC	LC APC to LC APC Patch Cord, 1 F, tight-buffered cable, LSZH, 2.9 mm legs, ClearCurve R5 ZBL	3 m
224401U3Z31001M	LC APC-SC APC	LC APC to SC APC Patch Cord, 1 F, tight-buffered cable, LSZH, 2.9 mm legs, ClearCurve R5 ZBL	1 m
224401U3Z31002M	LC APC-SC APC	LC APC to SC APC Patch Cord, 1 F, tight-buffered cable, LSZH, 2.9 mm legs, ClearCurve R5 ZBL	2 m
224401U3Z31003M	LC APC-SC APC	LC APC to SC APC Patch Cord, 1 F, tight-buffered cable, LSZH, 2.9 mm legs, ClearCurve R5 ZBL	3 m
444401U3Z31001M	SC APC-SC APC	SC APC to SC APC Patch Cord, 1 F, tight-buffered cable, LSZH, 2.9 mm legs, ClearCurve R5 ZBL	1 m
444401U3Z31002M	SC APC-SC APC	SC APC to SC APC Patch Cord, 1 F, tight-buffered cable, LSZH, 2.9 mm legs, ClearCurve R5 ZBL	2 m
444401U3Z31003M	SC APC-SC APC	SC APC to SC APC Patch Cord, 1 F, tight-buffered cable, LSZH, 2.9 mm legs, ClearCurve R5 ZBL	3 m

SFU/MDU Single-Fibre Assemblies (Terminated On One End, Low Friction Cable with Ivory Jacketing)			
Part Number	Connectors	Product Description	Length
002201U1FB3005M	LC APC	LC APC Pigtail, 1 F, tight-buffered cable, LSZH, 2.4 mm legs, ClearCurve R5 ZBL	5 m
002201U1FB3010M	LC APC	LC APC Pigtail, 1 F, tight-buffered cable, LSZH, 2.4 mm legs, ClearCurve R5 ZBL	10 m
002201U1FB3015M	LC APC	LC APC Pigtail, 1 F, tight-buffered cable, LSZH, 2.4 mm legs, ClearCurve R5 ZBL	15 m
002201U1FB3020M	LC APC	LC APC Pigtail, 1 F, tight-buffered cable, LSZH, 2.4 mm legs, ClearCurve R5 ZBL	20 m
004401U1FB3005M	SC APC	SC APC Pigtail, 1 F, tight-buffered cable, LSZH, 2.4 mm legs, ClearCurve R5 ZBL	5 m
004401U1FB3010M	SC APC	SC APC Pigtail, 1 F, tight-buffered cable, LSZH, 2.4 mm legs, ClearCurve R5 ZBL	10 m
004401U1FB3015M	SC APC	SC APC Pigtail, 1 F, tight-buffered cable, LSZH, 2.4 mm legs, ClearCurve R5 ZBL	15 m
004401U1FB3020M	SC APC	SC APC Pigtail, 1 F, tight-buffered cable, LSZH, 2.4 mm legs, ClearCurve R5 ZBL	20 m

Pigtail Packs (Terminated On One End)			
Part Number	Connectors	Product Description	Length
002201U4Z31001.5M	LC APC	LC APC Pigtail, 900 µm LSZH TB, ClearCurve ZBL	1.5 m

Additional lengths available, part numbers can be created by modifying last 4 digits, e.g., 010M for 10 m cable.

[Contents](#)

MDU Solutions – At the Staircase Level

PBPO Floor Distribution Terminal – Preconfigured		
Catalog Number	Product	Product Description
PBPO-BP10	PBPO NG includes organiser for up to 4 trays, 16 SC APC adapters	204 × 158 × 50 mm (L × B × H), 4 slots for 4 trays type EVOL, 5 mm, maximum splice capacity: 48 heat shrink fusion splices (12 per tray)
PBPO-SPLICE-BP10	PBPO 24 Splice	204 × 158 × 52 mm (L × B × H), 4 slots for 4 trays type EVOL, 5 mm, maximum splice capacity: 48 heat shrink fusion splices (12 per tray)
PBPO-COVER-BP10	Protective Cover for PBPO NG	300 × 158 × 50 mm (L × B × H)
PBPO-WALLMOUNT-BP10	Wall-Mount Set for PBPO NG	4 mm Wall-Mount Screws and Dowels



Organiser



Protective Cover

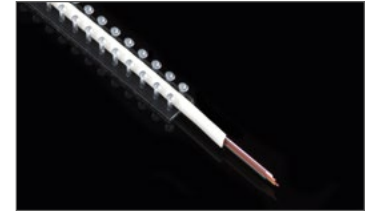


PBPO NG

MDU Solutions – At the Floor Level

The Clear Track Hallway Fibre Pathway provides an aesthetically pleasing solution for use in brownfield multidwelling units (MDUs) and multitenant office buildings. It is virtually invisible and features a proprietary, clear adhesive backing material with an easy-peel liner. Application involves no staples, liquid adhesives, or bulky raceways.

Features	Benefits
Virtually Invisible Pathway	Diffuse-reflection technology provides building owners and tenants with an inconspicuous fibre solution.
Proprietary, Clear Adhesive Backing	Allows for simple installation without the use of staples or liquid adhesives.
Field Removable Fibre	Clear Track 12-Fibre Micro-Module can be removed easily to repair or replace the fibres without damaging the wall surface.
Multi-Surface Application	Secure installation to many surfaces, including latex and oil paints and wallpaper.
Clear Track Hallway Small Point-of-Entry Box With Command™ Adhesive Strips	Can be easily placed without the use of screws and anchors and can be removed or adjusted without damage to the wall surface.



Clear Track Hallway Fibre Pathway with Clear Track 12-Fibre Micro Module

Clear Track Hallway Fibre Pathway	
Part Number	Product Description
80-6116-2278-0	Clear Track Hallway Fibre Pathway, 125 ft
80-6116-2279-8	Clear Track 12-Fibre Micro-Module, 150 ft, SC APC
80-6116-2280-6	Clear Track 12-Fibre Micro-Module, 300 ft, SC APC
80-6116-2304-4	Clear Track 12-Fibre Micro-Module, 600 ft, SC APC
80-6116-2305-1	Clear Track Micro-Module, 750 ft, unterminated
80-6116-2282-2	Clear Track Hallway Small Point-of-Entry Box
80-6116-2308-5	Clear Track Installation Tool with hall/quad wheels
80-6116-2307-7	Clear Track Hallway Fibre Pathway Cover, 305 pieces, 1 m length, 1,000 ft per case
80-6116-3506-3	Clear Track Hallway Fibre Access Toolkit (fibre pick and mid-span micro-module slitting tool)
80-6116-2133-7	Belt Clip Spool Holder, 3 x 2-in (interior diameter x width)
80-6114-9807-4	Clear Track ILU Micro Point-of-Entry Wall Cover
80-6116-2367-1	Clear Track Hallway/ILU/QUAD Wall Compatibility Test Weight and Test Strips
80-6114-8687-1	Clear Track Wall Surface Compatibility Test Strips (refill, 40 strips)



Clear Track Hallway Fibre Pathway Installed Around Exterior Corner



More about Corning® Clear Track Hallway ILU Fibre Pathway – [please visit our website.](#)

[Contents](#)

MDU Solutions – Inside the Living Unit

The pathway captures and routes a single 900 µm clear fibre to the desired outlet or terminal location, while remaining virtually invisible. Installation is simple – no heat, fluid adhesives, or staples – and the track can be installed on many surfaces, including latex and oil paints and wallpaper.

Clear Track ILU Fibre Pathway	
Reference Number	Product Description
CLR-TRK-205-01-000	Clear Track Fibre Pathway (track only), 62 m spool
CLR-BELT-CLIP-32	Clear Track Belt Clip Spool Holder
CLR-FBR-1KM-01-000	900 µm Clear Fibre, 1 km spool
CLR-POE-60	Micro Point-of-Entry Wall Cover
CLR-TOOL	Clear Track Installation Tool
CLR-TRK-KIT-100	Clear Track Fibre Pathway and Clear Fibre 900 µm (30, 48 m each) with 12 micro point-of-entry wall covers and installation tool
CLR-TOOL-KIT	Clear Track Installation and Surface Compatibility Test Kit
CLR-TEST-STRIPS	Clear Track Wall Surface Compatibility Test Strips
ILU-SM-WO-SCA-IV	One Pass Mini Surface-Mount Wall Outlet
CLR-TRK-CVR	Clear Track Cover, Box of 305 Pieces with 1 m transparent cover



Clear Track ILU Fibre Pathway with 900 µm Clear Fibre



Clear Track Hallway/ILU Wall Compatibility Test Weight and Test Strips



Clear Track Spool with Attached Belt Clip







Clear Track Belt Clip Spool Holder

[Contents](#)

MDU Solutions – Inside the Living Unit

Small Wall Terminal (SWT) Outlets Preconfigured	
Part Number	Product Description
SWT11B5WU010L3W-D	1 Shuttered LC APC Duplex Adapter, with 10 m of 1 F, 2.4 mm Corning® ClearCurve® zero-bend-loss (ZBL) drop cable in paper spool
SWT11B5WU020L3W-D	1 Shuttered LC APC Duplex Adapter, with 20 m of 1 F, 2.4 mm ClearCurve ZBL drop cable in paper spool
SWT11B5WU040L3W-D	1 Shuttered LC APC Duplex Adapter, with 40 m of 1 F, 2.4 mm ClearCurve ZBL drop cable in paper spool
SWT116SWU020L3W-D	1 Shuttered SC APC Duplex Adapter, with 20 m of 1 F, 2.4 mm ClearCurve ZBL drop cable in paper spool
SWT116SWU040L3W-D	1 Shuttered SC APC Duplex Adapter, with 40 m of 1 F, 2.4 mm ClearCurve ZBL drop cable in paper spool

Available in other sizes and configurations, please refer to our online catalogue for more details.

Low-Profile Wall Outlet and Shuttered SC APC Patch Cords		
Part Number	Product Description	FastShip
80-6114-8874-5	Low-Profile Wall Plate with SC APC shuttered adapter (CLR-WPT-01-SCASH-WH)	
FXAXA01J1Z30001M	1.0 m SC APC to SC APC Shuttered Patch Cords with 3.0 mm jacketed tight-buffered fibre (CLR-PCD-SCASH-1M)	
FXAXA01J1Z30002M	2.0 m SC APC to SC APC Shuttered Patch Cords with 3.0 mm jacketed tight-buffered fibre (CLR-PCD-SCASH-2M)	
FXAXA01J1Z30003M	3.0 m SC APC to SC APC Shuttered Patch Cords with 3.0 mm jacketed tight-buffered fibre (CLR-PCD-SCASH-3M)	
FXAXA01J1Z30004.5M	4.5 m SC APC to SC APC Shuttered Patch Cords with 3.0 mm jacketed tight-buffered fibre (CLR-PCD-SCASH-4.5M)	



Preconfigured SWT with Drop Cable in Paper Spool



Low-Profile Wall Plate for Shuttered SC Patch Cord



Shuttered SC APC Patch Cord

[Contents](#)

Corning® Fibrlok® Mechanical Splices

Fibrlok mechanical splices help enable fast, on-site splicing of 250 μm and 900 μm single-mode and multimode fibre.

Fibrlok Mechanical Splice Connectors

Part Number	Product Description
80610755896	Fibrlok II Universal Optical Fibre Splice for 250 and 900 μm fibre 4 x 6 mm (2529)
JE421001619	Fibrlok 250 μm Fibre Splice for 250 μm fibre 4 x 4 mm (2540G)

Fibrlok and Easy Cleaver pack

Part Number	Product Description
80611494396	Fibrlok II Universal Optical Fibre Splice for 250/900 μm fibre 4 x 6mm with Easy Cleaver(2529/C_60)

Fibrlok Preparation Kits

Part Number	Product Description
80611323751	Fibrlok Splice Kit without fibre cleaver (2559)
FQ100079216	No Polish Connector/ Fibrlok Universal Kit (2559-C)



Fibrlok Mechanical Splices



Fibrlok Preparation Kit

[Contents](#)

No Polish Connector (NPC and NPC+)

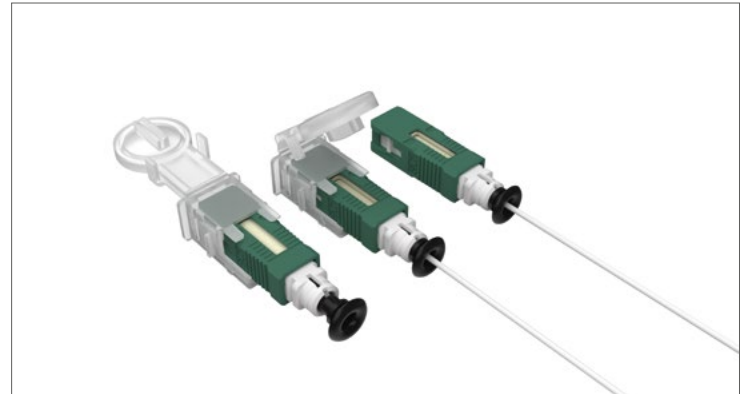
NPCs help enable fast, on-site installation of 250 µm, 900 µm, and jacketed single-mode and cables.

No Polish Connector (NPC and NPC+)		NPC 8800 SC UPC SM NPC 8830 LC UPC SM NPC+ SC UPC SM/FS	NPC 8800 SC APC SM/FS NPC 8830 LC APC SM/FS NPC+ SC APC SM/FS
Insertion loss (dB) typical		0,3	0,3
Insertion Loss Typical at 1300 nm		< -40	< -55
Reflectance (dB) maximum over operating temperature range		< -35	< -35
Operating temperature range (°C)		-40°C to 75°C	-40°C to 75°C
Storage temperature (°C)		-40°C to 85°C	-40°C to 85°C
Connector identification		Blue/White	Green/White
Field-termination kit		TKT-NPCP-CI01/8865-C/2559-C	
Materials	Connector Ferrule	Zirconia ceramic	
	Connector Housing and Body	Engineered resin	
	Boot	Thermoplastic elastomer	

*Connectors tested under load.



NPC LC Connectors



NPC+ SC Connectors

[Contents](#)

No Polish Connector (NPC and NPC+)

No Polish Connector with Assembly Tool	
Part Number	Description
NPCP-SCA-48	NPC+ (No Polish Connector) SC APC, flat splice (FS), 250 µm and 900 µm
NPCP-SCU-SM-48	NPC+ (No Polish Connector) SC UPC, FS, 250 µm and 900 µm
80611326226	SM No Polish SC UPC Connector (8800)
80611326267	SM No Polish SC APC Connector FS with Easy Cleaver (8800-APC/FS)
80611327760	SM No Polish LC UPC Connector with Easy Cleaver (8830)
80611327786	SM No Polish LC APC Connector FS with Easy Cleaver (8830-APC/FS)

No Polish Connector with Easy Cleaver	
Part Number	Description
NPCP-SCA-120-C	NPC+ (No Polish Connector) SC APC, FS, 250 µm and 900 µm including one Easy Cleaver and one semi-tight buffer clamp
NPCP-SCU-SM-120-C	NPC+ (No Polish Connector) SC UPC SM, 250 µm and 900 µm including one Easy Cleaver and one semi-tight buffer clamp
80611494115	SM No Polish SC UPC Connector with Easy Cleaver (8800/C)
80611494123	SM No Polish SC APC Connector flat splice with Easy Cleaver (8800-APC/FS/C)
80611494156	SM No Polish LC UPC Connector with Easy Cleaver (8830/C)
80611494164	SM No Polish LC APC Connector flat splice with Easy Cleaver (8830-APC/FS/C)

No Polish Connector with Easy Cleaver	
Part Number	Description
80611323793	No Polish Connector Kit with CI-01 Cleaver (8865-C)
TKT-NPCP-CI01	NPC+ Fibre Termination Kit including CI-01 high precision flat cleaver
FQ100079216	No Polish Connector/ Corning® Fibrolk® Universal Kit (2559-C)



NPC Preparation Kit – Fibrolk Universal Kit



NPC+ Fibre Termination Kit including CI-01 high precision flat cleaver

[Contents](#)

FuseLite® 2 Connector

Specifications		
	FuseLite 2 UPC	FuseLite 2 APC
Insertion loss (dB) typical	0.2	0.2
Reflectance (dB) typical at room temperature	< -50	< -60
Reflectance (dB) maximum over operating temperature range	< -50	< -60
Operating temperature range (°C)	-40° to 75°	-40° to 75°
Storage temperature (°C)	-40° to 85°	-40° to 85°
Connector identification	Blue/White	Green/White
Field-termination kit	Universal Handlers & Fusion Splicer	

FuseLite® 2 Connector for 250 µm and 900 µm Applications	
Part Number	Product Description
FL2-SCU-900-SM-25	FuseLite 2 SC UPC 900 µm single-mode Connectors
FL2-SCA-900-SM-25	FuseLite 2 SC APC 900 µm single-mode Connectors
FL2-LCU-900-SM-25	FuseLite 2 LC UPC 900 µm single-mode Connectors
FL2-LCA-900-SM-25	FuseLite 2 LC APC 900 µm single-mode Connectors
FL2-ST-900-SM-25	FuseLite 2 ST® 900 µm single-mode Connectors

FuseLite 2 Connector for Jacketed Applications	
Part Number	Product Description
FL2-SCU-2-3MM-SM-25	FuseLite 2 SC UPC 2–3 mm single-mode Connectors
FL2-SCA-2-3MM-SM-25	FuseLite 2 SC APC 2–3 mm single-mode Connectors
FL2-LCU-2MM-SM-25	FuseLite 2 LC UPC 2–3 mm single-mode Connectors
FL2-LCA-2MM-SM-25	FuseLite 2 LC APC 2–3 mm single-mode Connectors
FL2-ST-2-3MM-SM-25	FuseLite 2 ST 2–3 mm single-mode Connectors

FuseLite 2 Universal Handler	
Part Number	Product Description
FL2-HLD-CON-SC-LC-S-A	FuseLite 2 Universal Handler SC and LC



FuseLite® 2 Splice-On Connectors

[Contents](#)

Corning's FastShip Programmes

FastShip


In stock and ready to ship in 72 hours!

Product availability is critical to your installations, and quick access to the materials you need can make or break a project. Our FastShip programme for fibre optic solutions quickly supports your day-to-day work like moves, adds, and changes.

The FastShip programme flag indicates which part numbers are available for shipment within 72 hours of purchase order confirmation. And if you need products even faster, expedited service is available on request.*

For more information, contact Corning Customer Care at **00800 2676 4641** or cc.emea@corning.com.



 This flag next to a product number denotes it is available under the FastShip programme.

* Terms and conditions apply.
Please visit opcomm.corning.com/fast for further details.

[Contents](#)

Tools and Resources

Corning YouTube Channel
[corning.com/opcomm/youtube](https://www.corning.com/opcomm/youtube)

Online Drawings Centre
[corning.com/emea/en/product-drawings](https://www.corning.com/emea/en/product-drawings)

Online Certificates Centre
[corning.com/emea/en/certificates](https://www.corning.com/emea/en/certificates)

See the Light® Trainings and Webinars
[corning.com/emea/training](https://www.corning.com/emea/training)

Products Overview
catalog.corning.com/opcomm

Online Library
[corning.com/opcomm/resourcelibrary](https://www.corning.com/opcomm/resourcelibrary)

Order Tracker
ordertracker.corning.com

Customer Care
00800 2676 4641

Questions or Comments
cc.emea@corning.com

Local Sales Contacts
[corning.com/opcomm/emea/en/sales](https://www.corning.com/opcomm/emea/en/sales)

Authorised Distributor Network
[corning.com/emea/en/distributors](https://www.corning.com/emea/en/distributors)

Solutions Kiosk App (Android)
[corning.com/emea/en/android-app](https://www.corning.com/emea/en/android-app)

Solutions Kiosk App (iOS)
[corning.com/emea/en/ios-app](https://www.corning.com/emea/en/ios-app)

Order Corning's Core Product Catalogs
[opcomm.corning.com/
EMEA_CatalogueOrder.html](https://opcomm.corning.com/EMEA_CatalogueOrder.html)

Product Configurators

Newsletter Archive and Subscription
[corning.com/emea/en/newsletter](https://www.corning.com/emea/en/newsletter)

Follow us on Twitter
twitter.com/corningopcomm

Download Catalog



[Contents](#)

Glossary

ALTOS™	Advanced Loose Tube Operating System
APC	Angled Physical Contact
BAT	Building Access Terminal
CT	Central Tube
ECAM	External Cable Assembly Module
EIA	Electronic Industries Alliance
FREEDM™	Fire-Retardant Environmentally Drivers Minibundle
FRNC	Flame Retardant and Non-Corrosive
FS	Flat Splice
FTTP	Fibre to the Premises
HC	Hardened Connectivity
HD	High-Density
HDPE	High-Density Polyethylene
IEC	International Electrotechnical Commission
IEEE	Institute of Electrical and Electronics Engineers
ISP	Inside Plant
ITU	International Telecommunications Union
ITU G.652	Defines Standard Single-Mode Fibres
ITU G.657	Defines Standard Bend-Improved and Bend-Tolerant Fibres
LBL	Single-Mode Corning® ClearCurve® Fibre Low-Bend Loss
LC Connector	Lucent Connector, High-Density Connector
LSZH™	Low-Smoke, Zero-Halogen

LT	Loose-Tube
MDU	Multi-Dwelling Unit
MM (OM4)	Multimode (OM4)
MOQ	Minimum Order Quantity
NPC	No Polish Connector
OLT	Optical Line Terminal
ODF	Optical Distribution Frame
OSP	Outside Plant
PON	Passive Optical Network
PoP	Point-of-Presence
SC Connector	Subscriber or Square Type of Connector
SC Tray	Single Circuit Splice Tray
SE Tray	Single Element Splice Tray
SST	Flat Dielectric Drop Cable
SFU	Single-Family Unit
SM (OS2)	Single-Mode (OS2)
SMF	Single-Mode Fibre
TIA	Telecommunications Industry Association
UPC	Ultra Physical Contact
ZBL	Single-Mode Corning® ClearCurve® Fibre Zero-Bend Loss
WDM	Wavelength Division Multiplexer
🚚	FastShip Programmes

[Contents](#)

See the Light[®] Fibre Optic Training

See the Light[®] Training Programme

Corning has developed a comprehensive, integrated training programme to meet the needs of designers, installers, and end users of fibre optic products. Courses include hands-on installation and design classes focused on central office and fibre to the home (FTTH). Our class material is written and taught by field-experienced technical experts. Our teaching style incorporates hands-on training and interactive discussion on the latest products and solutions. Our online e-learning courses give you the flexibility to broaden your knowledge of fibre optics at your own pace and convenience. Some courses are a combination of classroom training and e-learning, providing a mix of theoretical study and practical installation to maximise your skills and knowledge.



To find out more about upcoming events and on-demand learning opportunities, visit www.corning.com or email us at training.emea@corning.com.

Webinars

These live and on-demand learning experiences combine a mix of solutions, product discussions, and demonstrations. Custom webinars are available upon request, based on resource availability. Contact your local sales or customer care representative for more information.

Training

These single or multiday trainings meet the needs of designers, installers, and end users of fibre optic products. The multiday offerings include hands-on installation and design classes for FTTH networks, installation, testing, and design.

E-Learning

Our modular e-learning training is constantly being expanded and offers technical training, product overviews, sales tools, or design aspects in various network environments.

[Contents](#)



CORNING

Corning Optical Communications GmbH and Co. KG • Leipziger Strasse 121 • 10117 Berlin, GERMANY
+00 800 2676 4641 • FAX: +49 30 5303 2335 • www.corning.com/opcomm/emea

Corning Optical Communications reserves the right to improve, enhance, and modify the features and specifications of Corning Optical Communications products without prior notification. A complete listing of the trademarks of Corning Optical Communications is available at www.corning.com/opcomm/trademarks. All other trademarks are the properties of their respective owners. Corning Optical Communications is ISO 9001 certified. © 2019 Corning Optical Communications. All rights reserved. CRR-718-BEN / October 2020