



**Performing Arts  
Division –  
Technical Support  
Unit**

**Sheung Wan Civic  
Centre**

5/F, Sheung Wan  
Municipal Services  
Building,  
345 Queen's Road  
Central  
Sheung Wan, H.K.  
Phone  
852-2853 2668  
Fax  
852-2543 9771

**CONTACTS**

**Jan Lau**  
Senior Manager (HKW)  
Direct Line  
852- 2853 2688

**Charrix Cheng**  
Manager (SWCC)  
Direct Line  
852- 2853 2686  
Fax Line  
852- 2543 9771

**Sunny Wong**  
Resident Technical  
Manager(HK)  
Direct Line  
852- 2853 0730 (SWCC) /  
3184 5737 (SWHCC)  
Fax Line  
852- 2850 6250

**GENERAL SET-UP**

*Theatre operates on a  
'bare-walls' touring  
policy. That is, all  
equipment is normally  
set-up and struck within  
the booking period.  
Hires are reminded to  
allow sufficient  
preparation time to hang  
theatre masking, rig all  
overhead stage lighting  
and set up sound system.  
Check with our Technical  
Manager for any other  
equipment and technical  
enquiry.*

# Sheung Wan Civic Centre – Theatre

## FULL Technical Information

V. 2021.12.09

Page 1 of 6



The SWCC Theatre is a traditional proscenium theatre designed and fully equipped to stage Drama, Music and Dance. It is also used for Assembly and Variety performances.

**DIRECTIONS**

MTR:  
Island Line, Sheung Wan Station, Exit A1  
or A2

Freeway (From Western Harbour Tunnel):  
Connaught Road Central → Turn right to  
Rumsey Street → Wing Lok Street →  
Turn left to Cleverly Street → Turn right to  
Bonham Strand → Turn left to Morrison  
Street

Freeway (From Western District):  
Connaught Road Central → Turn left to  
Cleverly Street → Turn right to Bonham  
Strand → Turn left to Morrison Street

Freeway (From Central):  
Connaught Road Central → Turn left to  
Rumsey Street → Turn right to Wing Lok  
Street → Turn left to Cleverly Street →  
Turn right to Bonham Strand → Turn left  
to Morrison Street



**LOADING**

Loading dock shared with the Municipal  
Complex

Cargo lift:  
2.80 x 1.70 x 3.00 m  
(W x D x H)  
Capacity: 2000kg

Door Opening to side stage:  
2.03 x 2.38m (W x H)

**STAGE ENTRANCE**

Next to 4/F Cargo lift or 4/F passenger  
lift, entry corridor turns right

**PARKING**

Permit required





## **AUDITORIUM**



**Total Seating:**  
482

### **Removable Seating**

Orchestra pit (seats): 16-20

35 seats will be lost from the Stall Row AA & BB for setting Orchestra pit.

## **PROSCENIUM**

Frame dimension

10.05 – 4.95m (W x H)

## **STAGE WIDTH**

Centreline to stage right wall

9.20m

Centreline to stage left wall

10.00m

Between fly galleries

12.50m

Centreline to stage right

6.20m

Centreline to stage left

6.30m

## **STAGE DEPTH**

Rear of Proscenium to back wall

11.80m

Rear of Proscenium to forestage edge

1.75m

## **STAGE HEIGHT**

Clearance under grid

11.54m

## **FORESTAGE / ORCHESTRA PIT**

10.00 x 2.00 x 1.50m (W x L x D)

Capacity

With a loss of 35 seats  
16-20 musicians

## **STAGE FLOOR**

Flat black surface hardboard

## **SIDE STAGE**

Limited side stage area

**The stage fire shutter is treated as a safety curtain by FSD and cannot be obstructed by scenery, equipment or stage wagon in production.**

## **REAR STAGE**

Not available

## **STORAGE SPACE**

Limited space behind the back wall

## **CROSSOVER**

Corridor behind stage and corridor in 5/F dressing room

## **RIGGING**

**House Curtain** (Golden Yellow)

Standard speed electric or  
Fly in and out manually



Electric Lighting Bar (Bar no.3, 4, 11, 22, 30, 37 & 42) #	7, Fixed speed electric
Double purchase counterweights	34
Bar diameter	48 mm
Bars distance (generally)	0.20m
Capacity (generally)	250kg SWL
Bar length	11.80m

# Please be reminded that all electric lighting bar can only reach to the maximum height of 6900mm (without lighting fixtures hanged). Hirers should be aware of this limitation and reserve safety distance between lighting bar and their bring-in sceneries and/or equipment.

### Rigging System

Bar 26 carries the mid curtain

Bar 37 carries the cyclorama lighting bar

Bar 39 carries the rear curtain

### STAGE EQUIPMENT

#### Stage Drapery

Black masking	Legs	10	flat	2.00 x 6.00m	(W x H)
	Borders	4	flat	12.00 x 2.50m	
	Half tabs	2	flat	7.00 x 6.10m	Mid-curtain
	Half tabs	2	flat	7.00 x 6.10m	Rear curtain
	Half tabs	2	flat	4.00 x 6.00m	Spare
	Tab	1	flat	14.10 x 5.80m	as Border 5 on bar 31

Golden Yellow House curtain	1	pair	General rig; fix speed electric draw, or manual fly.
-----------------------------	---	------	--

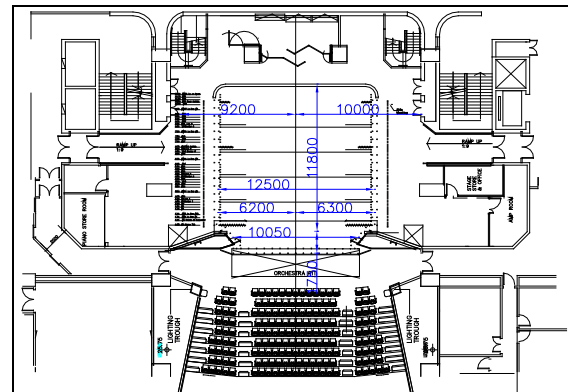
#### Orchestra Riser

Wenger portmaster. Aluminum frame platform with wooden surface. Guard rails available. No drilling or painting.

2.40 x 1.20m (W x L)	203mm(H) x 6
	407mm(H) x 6

**Choir Riser** (3 steps) Wenger tourmaster  
5 x 3 steps choir risers for approx. 60 persons.

**Acoustic Shell** Wenger legacy  
1 set of 5 Acoustic Shell Panels



**Dancing Tile** Black reversible for forestage edge to Cyc  
*for dance show only* (Please allow time to lay the tiles during booking time)  
12.00 x 2.00m x 6

**Stage Carpet** Green 2 4.00 x 8.50m  
*for Chinese Opera and Operatic Songs concerts only*

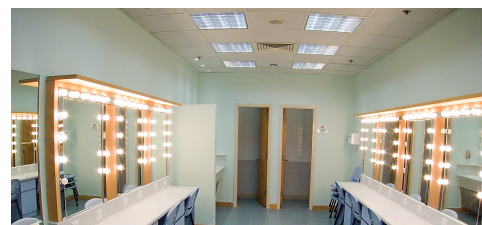
**Instrument** Grand Piano 1 Steinway & Sons (Incur extra charge)  
Timpani 1 set Ludwig 23", 26", 29", 32"

#### Lift and Ladder

Platform fibreglass ladder 1 3.00m (H)  
Cougar lifts 1 *operated by competent person & prior approved by venue management only*  
AP-25AC

### DRESSING ROOM

Stage (Level 5) **Dressing Room 1:** for 8 people  
**Dressing Room 2:** for 5 people  
**Dressing Room 3:** for 5 people  
**Dressing Room 4:** for 2 people  
**Dressing Room 5:** for 5 people  
**Dressing Room 6:** for 2 people





10 seats dressing table outside dressing room 4-6  
All rooms fitted with private toilet  
Dressing room 2, 4, 5 & 6 have shower  
Quick change facilities and digital locker at rear stage

### **RUNNING WARDROBE**

1 set of steamer, 5 sets of Irons & boards are available for loan from Resident Stage Management Office

### **LIGHTING**

<b>Dimmer</b>	180 nos. of 2.5kW; locating at Dimmer Room Level 4 Lecture Hall.				
<b>Control Board</b>	ETC Gio 2048, with full backup control facilities, EOS Family OS operating software, located in Lighting Control Room at the back of auditorium.				
<b>Houselight</b>	Dimmer controlled. Take-control available in Lighting Control Room.				
<b>Circuit</b>	180 nos. x 2.5kW production lighting circuits, fixed wiring type, all circuits are terminated to 2 nos. of 15A socket outlets to British standard 546 respectively on the production lighting boxes, distributed at various locations throughout the Stage and lighting bridges.				
<b>Additional Power</b>	100Amp 3-phase (include 1 nos. of 63Amp 3-phase socket, 1 nos. of 32Amp 3-phase socket and 1 nos. of 32Amp single phase socket), located at Down Stage Right wall with 100 clamping busbar for temporary cable connection. <b>Connection must be conducted by a local registered electrical worker.</b> <b>Hirer shall supply adequate circuit protective devices for all bring in electrical installation.</b> <b>13A wall-mounted socket outlets at UK standard are provided on the stage.</b>				
<b>Front of House Position</b>	FOH Lighting Bridge no.1, 8.17m throw at 38 degree FOH Lighting Bridge no.2, 11.24m throw at 26 degree				
<b>Profile</b>	750W	ETC	Source 4 15/30	85	30 (20 at each FOH lighting bridges, total 2 bridges)
	600W	Strand	SL 15/32	18	55 (pool) 13 (slot and stage) 5 (pool)
<b>Fresnel</b>	1kW	Lee	100-515	90	78 (stage and FOH lighting bridges) 12 (pool)
	1kW	Selecon	RAMA 7/50 (16RAFR 150)	15	
<b>Parcan 64</b>	1kW	Thomas	CP 61 / 62	22	
<b>Cyclorama light</b>	1kW	Selecon	Aurora	4	Top (Bar 37)
<b>Ground Row</b>	1kW	Selecon	Aurora-GR-4-way Linear	4	Bottom
<b>Follow Spot</b>	2kW	Robert Juliat	Ivanhoe 1039	2	Entrance top of the Auditorium
<b>Effects Projection</b>	2kW	Strand	Cadenza EP Fleecy clouds	1 1	





<b>Animation Projection</b>	750W	ETC	Source 4 25/50 Animation Motor	4 (Max 4 effects)		
	Effect	Disc	Water	4		
			Fire	4		
<b>Smoke generator</b>	1300W	Look Solutions	Viper NT	2		
<b>Strobe Light</b>	3kW	Martin	Atomic 3000	3		
<b>UV light</b>	400W	Griven	Wood	4		
<b>Other</b>	Music Light	K & M	122503.070.55	18		
	Side Light Towers		4-tier, 2.00m(H)	8		
	Floor Stands			12		
	Light Stands			16 (pool)		
<b>Gobo Holder</b>			<u>Holder</u>	<u>Holder</u>	<u>Gobo</u>	<u>Image</u>
<b>Spotlight Applicable</b>			<u>Qty.</u>	<u>Type</u>	<u>Size</u>	<u>Size</u>
	ETC		20	A	100mm	68-75mm
	ETC		20	B	86mm	65mm
<b>Supply of above equipment subject to availability on receipt of a lighting plan.</b>						
<b>Equipment availability does vary slightly according to equipment conditions and maintenance. Check with Technical Manager for any updates.</b>						
<b><u>Hirer will be provided with basic lighting only, from available hung equipment, if technical preparation time is less than 2 hours in the booking.</u></b>						
<b>All brought-in “Electrical and Stage Lighting Equipment” to be used in LCSD PA venues, shall meet the requirements of “Code of Practice for Electricity (Wiring) Regulations (2020 Edition)”. Please contact the venue management for any electrical safety concern. Website reference:</b>						
<b><a href="http://www.emsd.gov.hk/emsd/eng/welcome/em_safety.shtml">http://www.emsd.gov.hk/emsd/eng/welcome/em_safety.shtml</a></b>						
<b><u>SOUND</u></b>						
<b>Sound System</b>	Meyer Sound Lina (centre cluster)			3		
	Meyer Sound Lina (sides of proscenium)			10	(5 on each side)	
	Meyer Sound 750-LFC			4	(2 on each side)	
	Meyer Sound UPM-1XP (stage front)			3		
	Meyer Sound Lina (top of auditorium)			3		
	Meyer Sound UP4-XP (auditorium)			10		
<b>Main Control Console</b>	Soundcraft Vi2000 with 24 inputs and 8 outputs. Located in Sound Control Room at the back of auditorium.					
<b>Audio tie line</b>	Each side of stage			12		
	Front stage			6		
	Auditorium Row T			24		
<b>Microphone</b>	AKG CK9 with C451EB			3		
	AKG C414B			4		
	AKG D112			2		
	AKG C547BL			4		
	AKG C568 shotgun			4		
	Crown PCC 160			3		
	DPA 4018V			4		
	Neumann KM183			2		
	Neumann KM184			9		



	Shure 565SD	4
	Shure Beta 57A	4
	Shure Beta 58	2
	Shure Beta 58A	8
	Shure SM 57	6
	Shure SM 58	4
	Shure MX 412	2
	Shure PG58	1
<b>Wireless Microphone</b>	Shure ADX2/K9 hand-held type	8
	Shure ADX1-Lemo 3 body-pack type	8
	<b>Max. 8 units with a minimum booking of 2 sessions (Incur extra charge)</b>	
<b>Stage Monitor</b>	Meyer Sound UPJ-1P	8
	Meyer Sound UPM-2P	4
<b>CD Player</b>	Denon DN-C635	2
<b>Mini-Disc Recorder</b>	Tascam MD-801R	2
<b>LCD Projector</b>	Mitsubishi FD630U	1
	Panasonic PT-RZ970	1
<b>LED SURTITLE DISPLAY SYSTEM</b>	Horizontal LED Display Boards (Incur extra charge)	2 sets
	Default font color : White	
	Two (2) Horizontal display boards fixedly installed on the left and right sides of the forestage.	
	Display English, Chinese or English and Chinese texts simultaneously.	
	Size of LED board : 153.6 x 57.6 x 7.5cm (WxHxD)	
	The system will display in four lines per page.	
	Surtitle input and stored in Microsoft® Word (*.doc or .docx) file format.	
	The control monitor can be set at side stage right. Display on ALL boards will be identical.	
	LED board is set up within booking period when two sessions or more are booked. Setup time normally requires one hour.	
<b>COMMUNICATION</b>		
Stage manager desk located at stage left		
Two channels intercom system for stage, lighting and sound (6 sets portable pack)		
Paging and show relay system		
Close Circuit TV system (2 floating monitors for hirers)		
Production desk can be set at the middle of the auditorium upon request		
<b>Prior to booking date, please confirm with Technical Manager for the availability of the equipment. All required equipment will be set-up during the booking sessions; please allow adequate time for equipment set-up before performance or rehearsal.</b>		