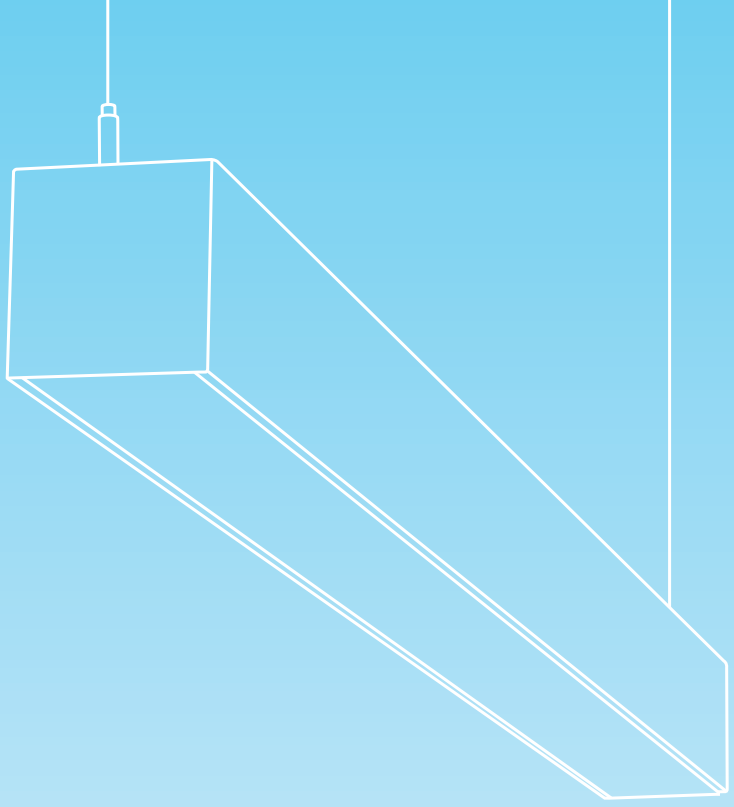
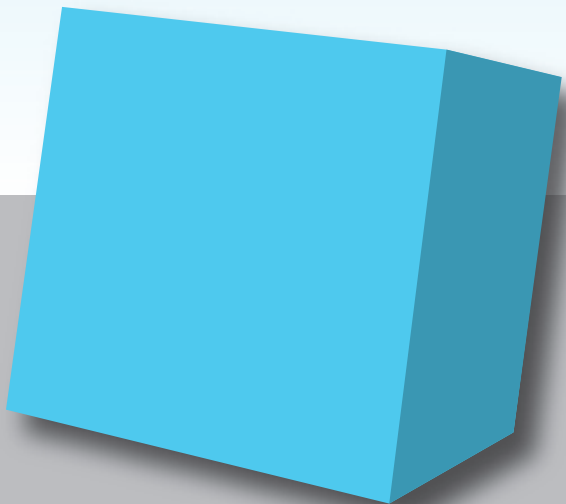


P40 Series

The unsurpassed versatility of modular fixtures. The performance standards of Prudential Litg.



fundamental







P40



P42



P43



P46

Whether it's our pendant-or wall-mount P40 there are concepts basic to effective design: scale, proportion, texture, color. The secret often lies in making the complex, simple. That's the beauty of our P40 Series. Whether it's our pendant-mount P40, our recessed P42 and P43 fixtures, or our modular direct/indirect P46, the clean detailing and slender proportions fit perfectly into any environment. And a new one-lamp staggered system for both T5/T5HO and T8 lamps offers even light transmission across the lens—without socket shadows.





P42



P43

P42 P43 Need a recessed solution? The P42 has a 1-1/2" regressed mitered aluminum doorframe that creates an elegant recess in the ceiling plane. The P43 lies flush with the plane, creating sleek lines of light that illuminate the space and allow the designer to create a taut graphic plane on the wall or ceiling. A variety of shielding and mounting options are available.



With its clean, mitered corners and either smooth or striated frames, our P42 brings relief to ceiling plane clutter.



The P43 makes delicate ribbons of light in the ceiling that are small in scale, yet powerful enough to fully illuminate walls and floors.

P40 Series

The unsurpassed versatility of modular fixtures. The performance standards of Prudential Ltd.



That's our new Pulse linear fixture above the conference room table. So where's the P43? Recessed vertically into the wall. With either a discreet flat finish trim or a concealed flange that can be spackled and finished, it's a covert application. Only the lens is revealed.

prulite.com





P40 When we took our popular 6" P60 and scaled down its basic shape to a 4" profile, the P40 became an instant classic. Now we've made it even better. Unlike most competitors, we now offer P40 with a one-lamp staggered lamping system that lets you use T5, T5HO or T8 lamps. So while the P40's clean lines and slender profile are ideal for minimalist interiors, there's nothing basic about it.

And because it's made from 20-gauge steel rather than more costly aluminum, P40 fits perfectly into any budget. We gave it texture and color, too, with 20 powder-coat paint finishes, galvanized steel, or any custom color.

P40 Series

The unsurpassed versatility of modular fixtures. The performance standards of Prudential Litg.

Be discreet: to create the LA Phil Store—located in the Frank Gehry-designed Walt Disney Concert Hall in Los Angeles—Belzberg Architects of Santa Monica used P40 fixtures to creatively light retail shelf space, using the line of light as a design element.

prulite.com

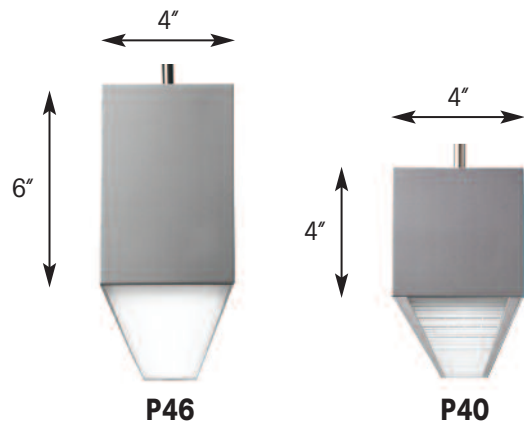




P46 Which direction did you have in mind? Our Modular 4" x 6" P46 lets you direct light a number of different ways: direct/indirect –symmetrical and asymmetrical. Available pendant or wall mounted, in T8 or T5, P46 gives the additional choices to help you achieve precisely the lighting effect you want: specify clear prismatic or satin acrylic lenses, and parabolic or blade louvers.

P46 can form a continuous row, or you can spec the installation of any of our standard three, four, or eight foot units. P46 can be cable- or wall-mounted: directly to the wall, with a 1/2" wall spacer, or a 2" wall bracket.

A new optional 1-lamp staggered configuration is also available. Wash the wall and ceiling, with an even light transmission that eliminates socket shadows along the entire length of its satin acrylic lens.



P40 Series

The unsurpassed versatility of modular fixtures. The performance standards of Prudential Ltg.



Get continuous light across the length of the lens with no socket shadows, thanks to a new optional 1-lamp staggered configuration.

prulite.com



P42

Applications Corridors, open offices, retail, libraries.

Features A narrow recessed lighting system with a 1-1/2" deep extruded aluminum regressed doorframe in either a standard lamp configuration, or a staggered lamp configuration for single T8 or T5/HO lamp rows to provide continuous lighting without socket shadows along the entire row length. Standard lamping for 2T5 or T5HO lamp rows have offset lamps within modular rows to mitigate socket shadows. T8 lamps in standard configuration are end to end in modular rows and are not offset.

Construction The housing, available in 2-, 3-, 4-, 6-, or 8-foot standard lengths, is made of 20-gauge steel. Regressed doorframe is extruded aluminum.

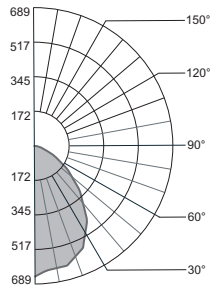
Finish The standard housing is gloss white (YGW) using polyester powder paint. The standard doorframe is gloss white (KW or JW) or matte black (KB or JB) as specified in ordering matrix.

Electrical T8 fixtures have instant-start electronic ballasts with less than 20% THD. T5 and T5HO fixtures have programmed start electronic ballast with less than 10% THD. Fixtures are U.L. Damp labeled (non-emergency) and I.B.E.W. manufactured. Maximum ballast size available: 2 3/8" width x 1 1/2" height.

Mounting Fixture is to be recess-mounted into exposed T-bar or hard ceiling applications.

Options **CR:** continuous row-installation (specify for non-staggered system only) **EML:** emergency battery (600-700 lumens); **EMH:** emergency battery (1100-1400 lumens); **DM:** dimming (consult factory); **RSE:** rapid-start electronic (T8 only); **10THD:** ballast with < 10% total harmonic distortion (T8 only); **B₋:** specific ballast, specify manufacturer and catalog number (consult factory); **FH:** fixture fusing (slow blow);

P42-1T8-04'-LPA-KW Regressed striated white frame 1T8 with Optiglow™ lens Efficiency = 53.8%



Standard System*

| series | lamp rows | nominal length | shielding | frame style/color | circuiting | voltage | ceiling system | |
|------------|-----------|--------------------|-----------|------------------------------|---|----------------------------|----------------|---|
| P42 | | | | | | | | |
| | 1T8 | 02' | WA | frost white acrylic diffuser | JW* smooth frame white or | SC single circuit | 120 | X1 exposed T-bar |
| | 2T8 | 03' | | | | | | |
| | 1T5 | 04' | PRA | prismatic acrylic lens | JB black | DC* dual circuit (in-line) | 277 | X3B hard ceiling (overhead mounting brackets) |
| | 2T5 | 06' | | | KW striated frame white or | 347 | | |
| | 1T5HO | 08' | LPA | | KB black | UNV* | *120-277 | X7 hard ceiling (concealed flange) |
| | 2T5HO | R_* *row length | OptiGlow™ | clear linear prismatic lens | *standard Note: Fixture body flange finished in gloss white on mounting style x3B. | | | |

One Lamp Staggered System*

| series | lamp rows | nominal length | shielding | frame style/color | circuiting | voltage | ceiling system | |
|-----------------|-----------|------------------------------|-----------|------------------------------|--|-------------------|----------------|---|
| P42-STG- | | | | | | | | |
| | 1T8 | 08' | WA | frost white acrylic diffuser | JW* smooth frame white or | SC single circuit | 120 | X1 exposed T-bar |
| | 1T5 | R_* | | | | | | |
| | 1T5HO | *row length in 4' increments | PRA | prismatic acrylic lens | JB black | | 277 | X3B hard ceiling (overhead mounting brackets) |
| | | | LPA | | KW striated frame white or | UNV* | | |
| | | | OptiGlow™ | clear linear prismatic lens | KB black | *120-277 | | X7 hard ceiling (concealed flange) |
| | | | | | *standard Note: Fixture body flange finished in gloss white on mounting styles x3B. | | | |

*See drawings for row examples and lamping configurations.

P43

Applications Corridors, open offices, retail, libraries.

Features A narrow 4" wide recessed lighting system in either a standard lamp configuration, or a staggered lamp configuration for single T8 or T5/HO lamp rows to provide continuous lighting without socket shadows along the entire row length. Standard lamping for 2T5 or T5HO lamp rows have offset lamps within modular rows to mitigate socket shadows. T8 lamps in standard configuration are end to end in modular rows and are not offset.

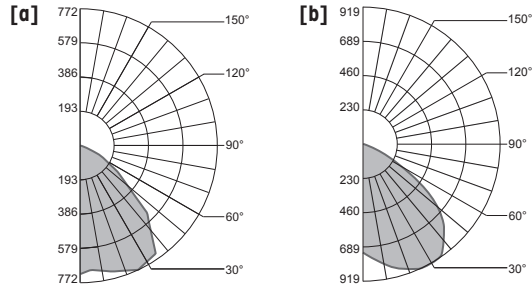
Construction The housing, available in 2-, 3-, 4-, 6- or 8-foot standard lengths, is made of die-formed 20-gauge steel. Louver material is semispecular, low iridescent aluminum. Snap-in prismatic lens is clear extruded acrylic. Snap-in satin acrylic lens is clear frost extruded acrylic with a matte finish for soft, even light transmission.

Finish The standard housing and flange color is gloss white (YGW) using polyester powder paint.

Options **CR:** continuous-row installation (specify with non-staggered system only); **EML:** emergency battery (600-700 lumens); **EMH:** emergency battery (1100-1400 lumens); **DM:** dimming (consult factory); **RSE:** rapid-start electronic (T8 only); **10THD:** ballast with < 10% total harmonic distortion (T8 only); **B :** specific ballast, specify manufacturer and catalog number (consult factory); **FH:** fixture fusing (slow blow); **INTCW:** integrates with Sense™ System wireless switches as whiteboard luminaire.

[a] P-43-1T5-04'-SPL-TMW-D1 Symmetrical direct 1T5 with parabolic louver Efficiency=68.2%

[b] P-43-1T5-04'-SPL-D1W Asymmetric direct 1T5 with parabolic louver Efficiency=64.3%



Standard System*

| lamp series/ rows | nominal length | shielding | color/finish* | distribution | circuiting | voltage | ceiling system |
|------------------------------|-------------------|-----------|---------------------------------|--|-------------------------|----------------------------|---|
| P43 | | | | | | | |
| 1T8 | 02' | SAL | satin acrylic extruded lens | TMW textured matte white | D1 direct | SC single circuit | X1 exposed T-bar |
| 2T8 | 03' | | | YGW† gloss white | D1W* asymmetric to wall | DC* dual circuit (in-line) | X3B hard ceiling (overhead mounting brackets) |
| 1T5 | 04' | PRA | prismatic acrylic extruded lens | YPE pewter | *1 lamp only | *2-lamp only | |
| 2T5 | 06' | | | Y__ premium color | | | |
| 1T5HO | 08' | SPL | silver parabolic louver | CC custom color | | | X7 hard ceiling (concealed flange) |
| 2T5HO* | R_* | | | | | | |
| *not available with PRA, SAL | *row length | BLA | blade louver-anodized | *indicates color of flange - x1 and x3B ceiling systems only †standard | | | |
| | | BLW | blade louver white | | | | |

One Lamp Staggered System*

| lamp series/ rows | nominal length | shielding | color/finish* | distribution | circuiting | voltage | ceiling system |
|----------------------|-----------------------------------|-----------|-----------------------------|--|------------|-------------------|---|
| P43-STG- | | | | | | | |
| 1T8 | 08' | SAL | satin acrylic extruded lens | TMW textured matte white | D1 direct | SC single circuit | X1 exposed T-bar |
| 1T5 | R_* | | | YGW† gloss white | | | X3B hard ceiling (overhead mounting brackets) |
| 1T5HO | *row length in 4' increments only | | | YPE pewter | | | |
| | | | | Y__ premium color | | | |
| | | | | CC custom color | | | |
| | | | | *indicates color of flange - x1 and x3B ceiling systems only †standard | | | |
| | | | | | | | X7 hard ceiling (concealed flange) |

*See drawings for row examples and lamping configurations.



P40

Features A 4" x 4" square modular linear lighting system in either a standard lamp configuration, or a staggered lamp configuration for single T8 or T5/HO lamp rows to provide continuous lighting without socket shadows along the entire row length. Standard lamping for 2T5 or T5HO lamp rows have offset lamps within modular rows to mitigate socket shadows. T8 lamps in standard configuration are end to end in modular rows and are not offset.

Construction The housing, available in 3-, 4- or 8-foot standard lengths, and end plates are made of 20-gauge steel. Silver parabolic louver material is semi-specular, low iridescent aluminum. Snap-in prismatic acrylic lens is clear extruded acrylic. Snap-in satin acrylic lens is clear frost extruded acrylic with a matte finish for soft, even light transmission.

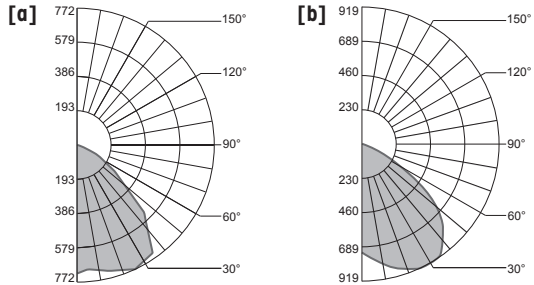
Finish The standard exterior body color is textured matte white (TMW) using polyester powder paint. Available in optional galvanized finish or refer to **Controls & Options Section** for paint colors. Canopies match finish when galvanized is specified; all others match body color unless otherwise specified.

Options **EML:** emergency battery (600-700 lumens); **EMH:** emergency battery (1100-1400 lumens); **DM:** dimming (consult factory); **RSE:** rapid-start electronic (T8 only); **10THD:** ballast with

< 10% total harmonic distortion (T8 only); **B_:** specific ballast, specify manufacturer and catalog number (consult factory); **FH:** fixture fusing (slow blow); C2: 90° 2-way corner; CX: special connector (consult factory); **DLH:** RightLight™ daylight harvesting system, specify number of sensors per row; **INTCW:** integrates with Sense™ System wireless switches as whiteboard luminaire.

[a] P-40-1T5-04-SPL-D1 Symmetric direct 1T5 with parabolic louver Efficiency=68.2%

[b] P-40-1T5-04-SPL-D1R Asymmetric indirect 1T5 with parabolic louver Efficiency=64.3%



Standard System*

| lamp series/ rows | nominal length | shielding | color/finish | distribution | circuiting | voltage | mounting | ceiling system |
|------------------------------|-----------------------------------|-------------------------------------|---------------------------|----------------------------------|----------------------------|----------|---|-------------------|
| P40 | | | | | | | | |
| 1T8 | 03' | NS* no shielding | TMW* textured matte white | D1 direct | SC single circuit | 120 | CA48** aircraft cable (adjustable) | X1 exposed T-bar |
| 2T8 | 04' | SAL† satin acrylic extruded lens | YGW gloss white | D1R* asymmetric to room | DC* dual circuit (in-line) | 277 | CA96" aircraft cable (adjustable) | X3 hard ceiling |
| 1T5 | 08' | PRA† prismatic acrylic lens | YPE pewter | D1W* asymmetric to wall | *2-lamp only | 347 | CA144" aircraft cable (adjustable) | X6 slot grid |
| 2T5 | R_* | | Y_ premium color | D2 indirect | | UNV* | SUR† surface mount | |
| 1T5HO | *row length in 4' increments only | SPL silver parabolic louver | Y_ premium color | D2R* indirect asymmetric to room | | *120-277 | WB wall bracket (2" standoff) | |
| 2T5HO* | | BLA blade louver aluminum | CC custom color | | | | WS wall spacer (1/2" standoff) | |
| *not available with PRA, SAL | | BLW blade louver white | GLV galvanized | *1-lamp only. | | | WM** direct to wall | |
| | | *D2 only †not available with DLH | *standard | | | | *standard †Di, DiR, DiW only **is ADA compliant | |

One Lamp Staggered System*

| lamp series/ rows | nominal length | shielding | color/finish | distribution | circuiting | voltage | mounting | ceiling system |
|----------------------|-----------------------------------|----------------------------------|---------------------------|---------------|-------------------|----------|------------------------------------|-------------------|
| P40-STG- | | | | | | | | |
| 1T8 | 08' | SAL* satin acrylic extruded lens | TMW* textured matte white | D1 direct | SC single circuit | 120 | CA48** aircraft cable (adjustable) | X1 exposed T-bar |
| 1T5 | R_* | *not available with DLH | YGW gloss white | | | 277 | CA96" aircraft cable (adjustable) | X3 hard ceiling |
| 1T5HO | *row length in 4' increments only | | YPE pewter | | | 347 | CA144" aircraft cable (adjustable) | X6 slot grid |
| | | | Y_ premium color | | | UNV* | SUR surface mount | |
| | | | CC custom color | | | *120-277 | WB wall bracket (2" standoff) | |
| | | | GLV galvanized | | | | WS wall spacer (1/2" standoff) | |
| | | | *standard | | | | WM† direct to wall | |
| | | | | Distribution: | | | | |
| | | | | | | | | |
| | | | | D1 | D1R/W | D2 | D2R | |
| | | | | | | | *standard †is ADA compliant | |

*See drawings for row examples and lamping configurations.

P46

Features A 4" x 6" direct/indirect modular linear lighting system in either a standard lamp configuration, or a staggered lamp configuration for single T8 or T5/HO lamp rows to provide continuous lighting without socket shadows along the entire row length. Standard lamping for 2T5 or T5HO lamp rows have offset lamps within modular rows to mitigate socket shadows. T8 lamps in standard configuration are end to end in modular rows and are not offset. See Typical Row examples for lamping configurations.

Construction The housings, available in 3-, 4-, or 8-foot standard lengths, and end plates are made of 20-gauge steel. Silver parabolic louver material is semi-specular, low iridescent aluminum. Snap-in prismatic acrylic lens is clear extruded acrylic. Snap-in satin acrylic lens is clear frost extruded acrylic with a matte finish for soft, even light transmission.

Finish The standard housing is textured matte white (TMW) using polyester powder paint. Available in optional galvanized finish or refer to **Controls & Options** Section for paint colors. Canopies match finish when galvanized is specified; all others match body color unless otherwise specified.

Mounting Fixture is to be suspended with aircraft cables, surface-mounted, wall-mounted directly, or with a 1/2" wall spacer or 2" wall bracket.

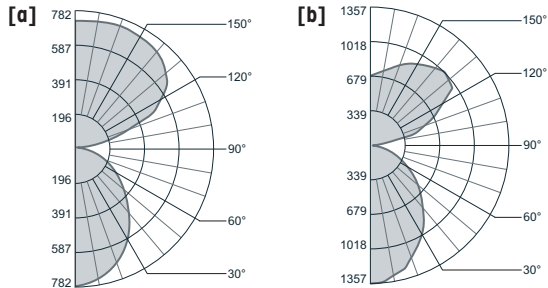
Options **EML:** emergency battery (600-700 lumens); **EMH:** emergency battery (1100-1400 lumens); **DM:** dimming (consult factory); **RSE:** rapid-start electronic (T8 only); **10THD:** ballast with

< 10% total harmonic distortion (T8 only); **B_:** specific ballast, specify manufacturer and catalog number; **FH:** fixture fusing (slow blow);

C2: 90° 2-way corner; **CX:** special connector (consult factory); **DLH:** RightLight™ daylight harvesting system, specify number of sensors per row; **INTCW:** integrates with Sense™ System wireless switches as whiteboard luminaire.

[a] P46-1T5/1T5-04'-SAL-D3 Symmetrical 1T5 direct, 1T5 indirect with satin acrylic lens down, and no shielding up Efficiency = 81%

[b] P46-2T5/1T5-04'-SAL-D7R Symmetrical 2T5 direct, asymmetrical 1T5 indirect with satin acrylic lens down, no shielding up Efficiency = 69%



Standard System*

| series/ lamp rows* | nominal length | shielding* | color/finish | distribution | circuiting | voltage | mounting | ceiling system* | |
|---|-------------------|-------------------------------------|---------------------------------|--------------------------|---|-----------------------------|------------------------------------|--------------------------------|--|
| P46 | | | | | | | | | |
| (D3) | 03' | SAL† | satin acrylic extruded lens | TMW textured matte white | D3 direct/indirect | SC single circuit | CA48" aircraft cable (adjustable) | X1 exposed T-bar | |
| 1T8†/1T8** | 04' | | | | | | | X3 hard ceiling | |
| 2T8†/1T8** | 08' | PRA† | prismatic acrylic extruded lens | YGW gloss white | D6 asym-metric direct/indirect | DC* dual circuit | CA96" aircraft cable (adjustable) | X6 slot grid | |
| 1T8†/2T8** | R_* | | | YPE pewter | | *direct & indirect circuits | | *specify with cable mount only | |
| 2T8†/2T8** | *row length | | | Y_ premium color | | | | | |
| 1T5†/1T5** | | SPL | silver parabolic louver | CC custom color | D7R direct/asymetric indirect to room | UNV* | CA144" aircraft cable (adjustable) | | |
| 2T5†/1T5** | | | | GLV galvanized | D7W direct/asymetric indirect to wall | *120-277 | WB wall bracket (2" standoff) | | |
| 1T5†/2T5** | | BLA | blade louver-anodized | | D8R asymetric indirect to room/asymetric indirect to room | | WS wall spacer (1/2" standoff) | | |
| 2T5†/2T5** | | BLW | blade louver white | | D8W asymetric indirect to wall/asymetric indirect to wall | | WM* direct to wall | | |
| (D6) | | | | | | | | *is ADA compliant | |
| 1T8†/1T8** | | *for direct lighting component only | | | | | | | |
| 1T8†/2T8** | | †not available with DLH | | | | | | | |
| 1T5†/1T5** | | | | | | | | | |
| 1T5†/2T5** | | | | | | | | | |
| (D7R/D7W) | | | | | | | | | |
| 1T8†/1T8** | | | | | | | | | |
| 2T8†/1T8** | | | | | | | | | |
| 1T5†/1T5** | | | | | | | | | |
| 2T5†/1T5** | | | | | | | | | |
| (D8R/D8W) | | | | | | | | | |
| 1T8†/1T8** | | | | | | | | | |
| 1T5†/1T5** | | | | | | | | | |
| *all T5 lamping configurations also available in T5HO | | | | | | | | | |
| †direct | | | | | | | | | |
| **indirect | | | | | | | | | |
| | | | | Distribution: | | | | | |
| | | | | | | | | | |
| | | | | D3 | D6 | D7R/W | D8R/W | | |

*See drawings for row examples and lamping configurations.



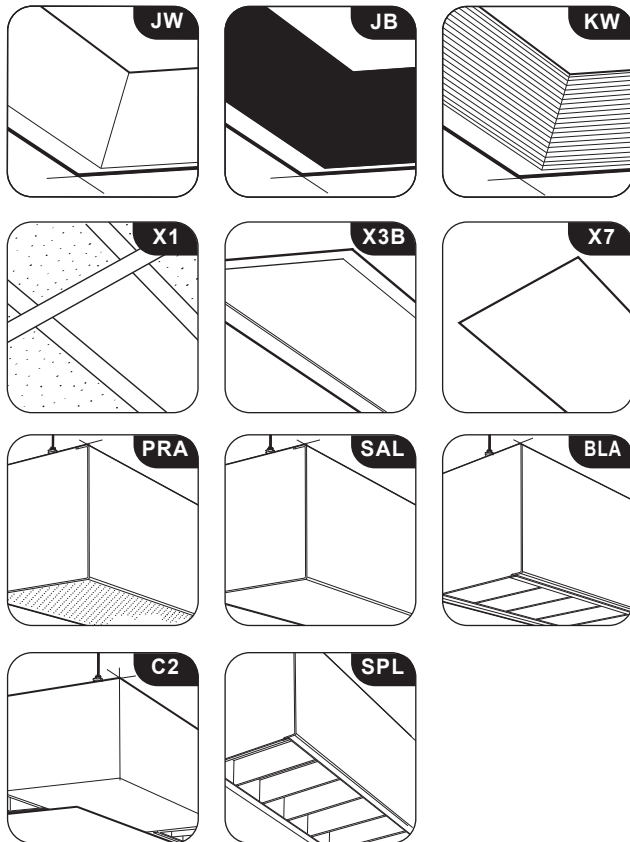
P46, cont.

Staggered System*

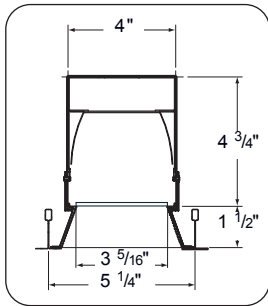
| series/ lamp rows* | nominal length | shielding* | color/finish | distribution | circuiting | voltage | mounting | ceiling system* |
|--|-------------------|-------------------------------------|----------------------|------------------------------------|-----------------------------|----------|-----------------------------|--------------------------------|
| P46-STG- | | | | | | | | |
| (D3) | 08' | SAL | TMW | D3 | SC | 120 | CA48" | X1 |
| 1T8†/1T8** | R_* | safrin acrylic extruded lens | textured matte white | direct/indirect | single circuit | 277 | aircraft cable (adjustable) | exposed T-bar |
| 1T8†/2T8** | *row length | *for direct lighting component only | YGW | D7R | DC* | 347 | CA96" | X3 |
| 1T5†/1T5** | | | gloss white | direct/asymmetric indirect to room | dual circuit | UNV* | aircraft cable (adjustable) | hard ceiling |
| 1T5†/2T5** | | | YPE | | *direct & indirect circuits | *120-277 | CA144" | X6 |
| (D7R/D7W) | | | premium color | D7W | | | aircraft cable (adjustable) | slot grid |
| 1T8†/1T8** | | | CC | direct/asymmetric indirect to wall | | | CA144" | *specify with cable mount only |
| 1T5†/1T5** | | | GLV | | | | aircraft cable (adjustable) | |
| *all T5 lamping configurations also available in T5HO †direct **indirect | | | | | | | | |
| | | | | | | | WB | |
| | | | | | | | wall bracket (2" standoff) | |
| | | | | | | | WS | |
| | | | | | | | wall spacer (1/2" standoff) | |
| | | | | | | | WM* | |
| | | | | | | | direct to wall | |
| | | | | | | | *is ADA compliant | |

*See drawings for row examples and lamping configurations.

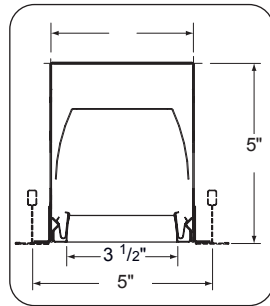
Lenses, louvers and ceiling mount options



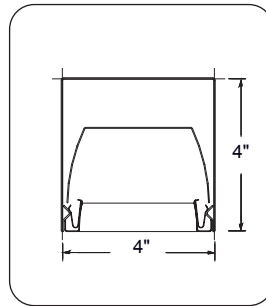
Dimensions



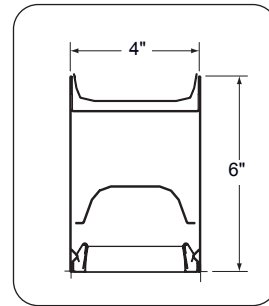
P42



P43



P40



P46

Lamping Configuration

One lamp Staggered System (STG)

Typical Row Examples

T5 - (3) 3ft 21w or 39w lamps



T8 - (3) 3ft 25w lamps

T5 - (4) 3ft 21w or 39w lamps and (1) 2ft 14w or 24w lamps



T8 - (3) 3ft 25w and (1) 4ft 32w lamp

T5 - (3) 4ft 28w or 54w lamps, (3) 21w or 39w lamps, and (1) 2ft 14w or 24w lamps

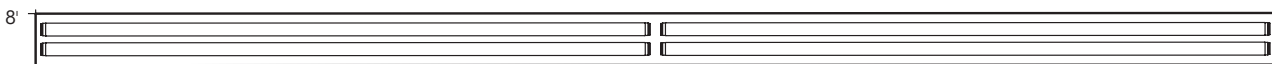


T8 - (6) 3ft 25w lamps and (1) 4ft 32w lamp

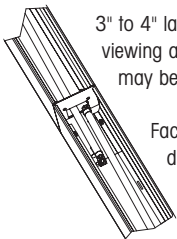
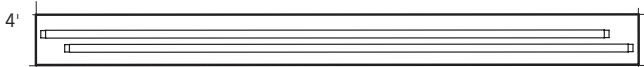
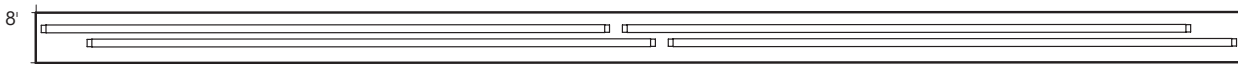
Standard System

Typical Row Examples

T8 lamp rows



2T5 or 2T5HO lamp rows



3" to 4" lamp overlap. From certain viewing angles brightness variations may be visible at overlap.

Factory supplied submittal drawing will be provided.
Lamps are not supplied

For the latest and most accurate information, visit us at prulite.com.



Want to learn more about the versatility of our modular fixtures? Visit prulite.com.



Cole Haan
Factory Store
Philadelphia, PA
Lighting Design Alliance



This fixture offers control options,
enhanced with energy savings. ✓

Waste not, want not. As part of
our efforts to ensure we practice
sustainability in our business, we've
printed this brochure on recycled paper.



Prudential Ltg.
1737 East 22nd St
Los Angeles, CA 90058
Tel 213.746.0360
prulite.com

Light creates Life.
Create with Prudential Ltg.

