



---

**Project Controls Expo**  
**09/10 Nov London 2011**

**Fuse<sup>®</sup> - The 'One-Stop Shop'**  
**For Project Analytics**

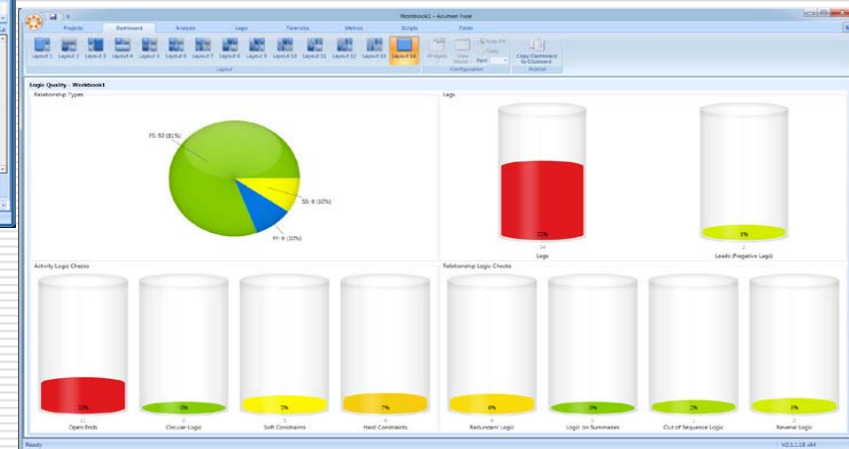
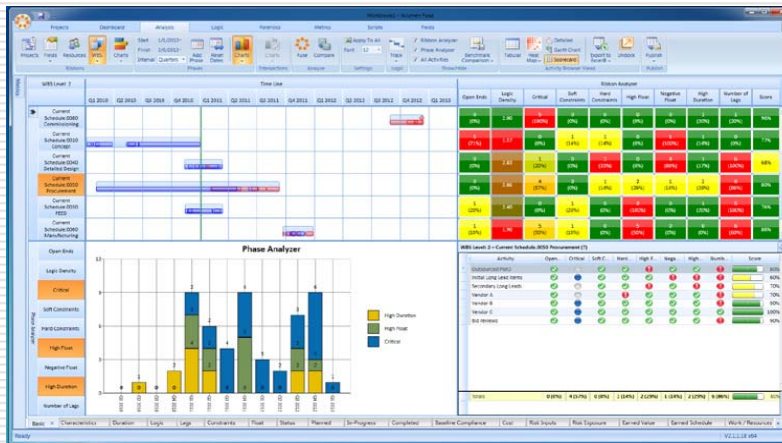
# Speaker Profile

---

- Amardeep Dua
- Business Development Manager for OTC Optima
- OTC Optima – a project management consultancy with many years of experience implementing integrated project control environments with EV and risk management at their core
- Sole UK/European distributors for Fuse

# Acumen Fuse

## Enterprise Project Analysis



# Index

---

- What is Fuse?
- The Key Features of Fuse
- Three Analysis Modules
- Current Release: Version 3
- Benefits of Fuse
- Customisation
- Demo
- Questions



# What is Fuse?

---

- ❑ Fuse is a metric analysis and visualisation tool that assesses quality of schedules, accuracy of cost forecasts, realism of risk models, earned value and project performance
- ❑ Fuse uses libraries of metrics to provide a unique insight into how to improve project plans and execution strategies
- ❑ What has typically taken schedulers and project managers days to achieve is now easily and repeatedly done in minutes
- ❑ Quickly pinpoint problematic areas and activities within a project and let Fuse provide solutions for resolution

# The Key Features of Fuse

---

## ***Project Analysis***

- Achieve well built and realistic plans. Determine where project cost overruns and risk hot spots are happening

## ***Slice & Dice***

- Create groups of activities based on any attribute or code. Apply metrics to specific groupings for targeted analysis & insight

## ***Trend evaluation***

- Pinpoint changes and variances between two or more projects

# The Key Features of Fuse

---

## ***Performance Tracking***

- Visualise project performances from start to finish.  
Compare current project snapshots to past and future plans

## ***Custom Reporting***

- Quickly generate Word, PDF or Excel based reports on project quality or status

# Fuse Analysis

*Three analysis modules in one tool:*

Compare multiple schedules, or iterations of the same schedule to identify differences as well as understand the **root cause of the delays**



Fuse includes **over 250 schedule, cost, risk, EV & performance metrics**

Quickly check all **logic links** within the project (or multiple projects)



# Release: Fuse Version 3

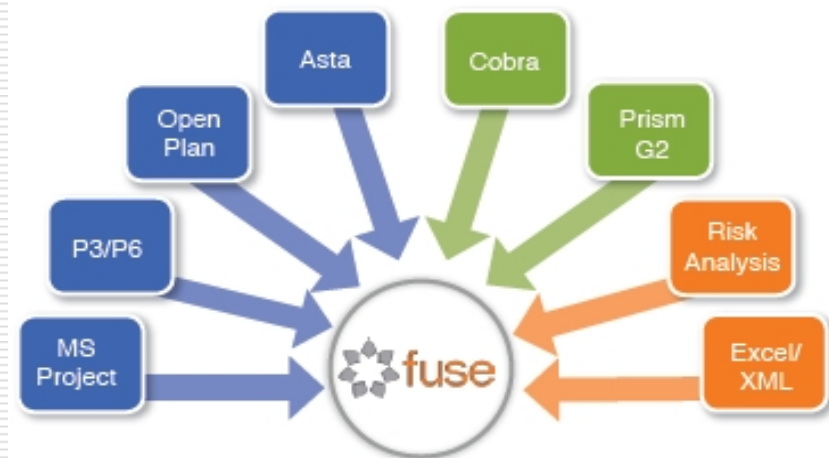
---

- ❑ Version 3.0 focuses on adding new features and functions based on the direct requests from users
- ❑ Run an analysis and not only report the errors, complexities and flaws BUT you can also REMOVE them within Fuse
- ❑ New features include:
  - Schedule Cleanser
  - Visualise Timeline
  - Logic Trace
  - Drill down analysis

# Benefits



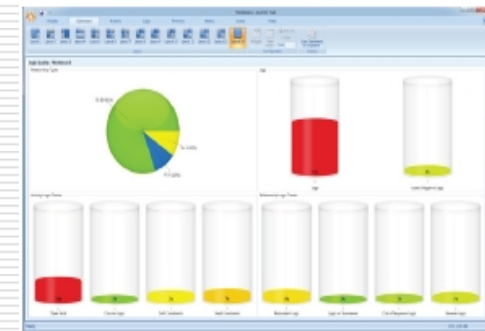
## Multi-Platform Integration



Import multiple data platforms into one workbook. Merge schedule with cost, risk and EV

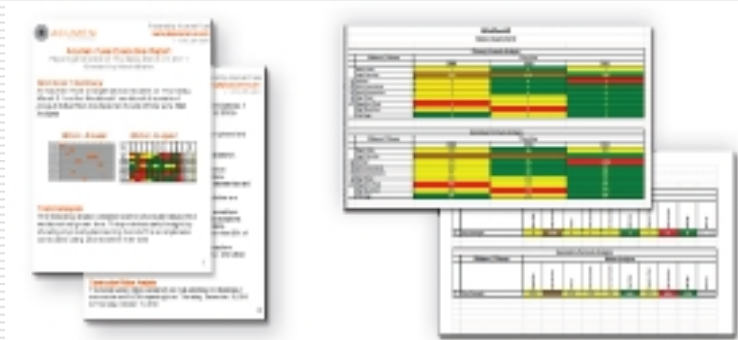
# Customisation

- ❑ Edit any of Fuse's standard metrics to meet your project criteria, or create new metrics with the easy-to-use metric builder
- ❑ Default metrics (250+) include:
  - Activity and project status
  - Work/resources allocation
  - Earned value surveillance
  - Baseline compliance analysis
  - DCMA 14 point/GAO
  - Cost Performance.....
- ❑ Customise the dashboard for quick insight into project status and metric results

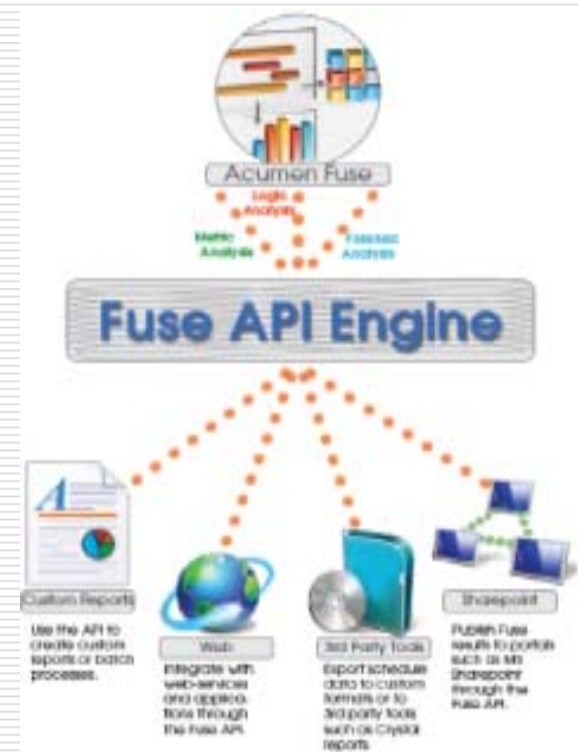


# Reporting

- ❑ Publish analysis results to an Executive Briefing or detailed Analyst Report



- ❑ Fuse API - generate custom reports or publish to the Web, MS Sharepoint or 3<sup>rd</sup> party applications



---

# Demo



# Questions

---



**If you require further information or have additional questions please visit our stand or please email us at [fuse@otcoptima.com](mailto:fuse@otcoptima.com)**