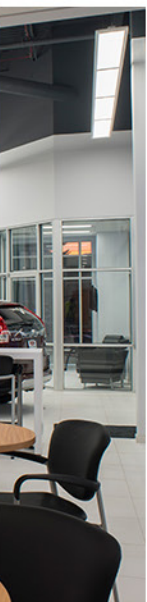
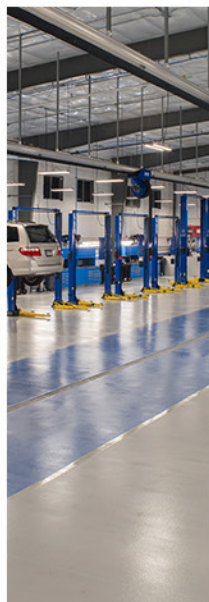




# AUTO DEALERSHIP EXPERIENCE



# BBL





## National Rankings

MODERN HEALTHCARE TOP  
DESIGN-BUILD COMPANIES  
1

BUSINESS REVIEW TOP  
CONTRACTORS  
1

ENR NEW YORK TOP  
CONTRACTORS  
18

ENR TOP 100  
DESIGN-BUILD FIRMS  
66

ENR TOP 400  
CONTRACTORS  
215

## Corporate Overview

Founded in 1973, BBL is a fully diversified Design-Build, General Contractor, and Construction Management firm with annual construction sales in excess of \$400 million. BBL is a leader in the construction industry, ranking among the nation's Top 400 Contractors in ENR (Engineering News Record) magazine.

BBL currently employs over 300 highly talented and experienced construction, design, and management professionals. Our knowledge and expertise ensures that proper design and construction solutions are used on each of our projects. Our delivery process saves our clients time and money, while assuring them they will receive a high quality, successful project that will support their desired business goals.

We deliver a wide variety of construction projects including healthcare, hospitality, financial institutions, multifamily, commercial office, higher education, government, retail, and industrial projects.

With over four decades of experience, BBL has built a reputation as an industry leader. Our history of success is a result of our solid commitment to quality and an established record of delivering projects on-time and in-budget. Whether it's from our corporate office in Albany, New York or our regional office in Charleston, West Virginia, all our clients receive the same professional service and high-quality construction.



**BBL**



# Mohawk Chevrolet

Malta, New York  
(in progress)



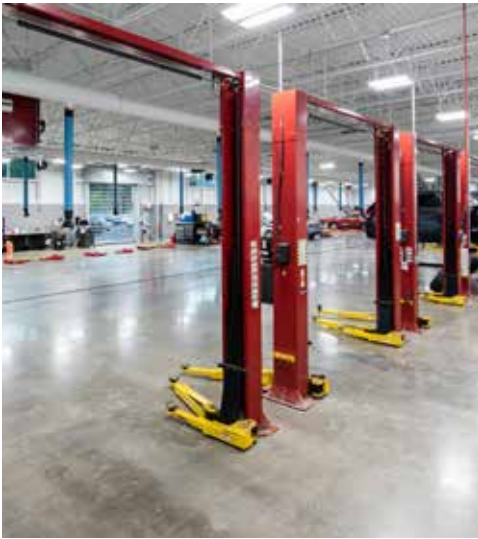
SQUARE FOOTAGE  
45,000

DELIVERY METHOD  
Design-Build

BBL is currently in the process of building this new 45,000 square foot Chevrolet car dealership located in Malta, New York..

# Armory Chrysler Dodge Jeep Ram

Albany, New York



SQUARE FOOTAGE  
54,000

DELIVERY METHOD  
Design-Build



Construction of a 54,000 car dealership with a 12 car service reception, 31 service bays, 3 detail bays, and a car wash.



## Friendly Honda Fayetteville, New York



SQUARE FOOTAGE  
25,000

DELIVERY METHOD  
Design-Build

BBL delivered a new 25,000 sf structural steel and masonry Honda dealership, service center, and a separate car wash in Fayetteville, NY. The finishes include; EFIS, insulated metal wall panels, storefront glass, and Alucobond decorative metal panel for Honda Barrel and façade.

## Carbone Honda Bennington, Vermont



SQUARE FOOTAGE  
15,000

DELIVERY METHOD  
Design-Build

BBL built Carbone's Honda franchise location in Bennington, Vermont. Carbone has also selected BBL to build their Toyota location in the adjacent lot.



## Carbone Toyota Bennington, Vermont



SQUARE FOOTAGE  
*New Construction:* 8,200  
*Renovation:* 23,000

DELIVERY METHOD  
Design-Build

In Bennington, VT, BBL is constructing 8,200 sf addition to the Carbone Toyota including a showroom, customer care area, service lane, and offices. Beyond the 8,200 sf addition, there will be 23,000 sf in renovations to the existing facility.

## Carbone Subaru Troy, New York



SQUARE FOOTAGE  
30,685

DELIVERY METHOD  
Design-Build

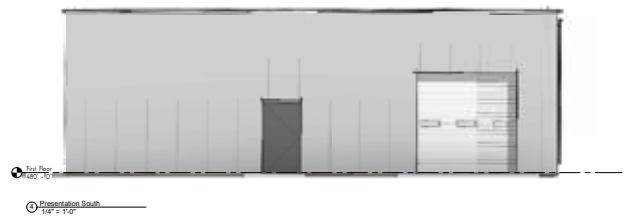


Although categorized as new construction, the dealership facility was constructed utilizing the main superstructure of the original existing building. The reconstructed dealership building includes a new 24,144 sf vehicle sales/service center area, a 6,541 sf pre-owned sales area, a 2,824 sf showroom, and a 12,451 sf service area with both car (14) and truck (2) service bays.



# Carbone Subaru Car Wash

Troy, New York  
(in progress)



SQUARE FOOTAGE  
3,000

DELIVERY METHOD  
Design-Build

Following construction of the dealership itself, BBL was invited back to build a 3,000 square foot car wash and detail center facility for Carbone Subaru of Troy, New York.

# Kingston Honda

Kingston, New York



SQUARE FOOTAGE  
40,000

DELIVERY METHOD  
Design-Build

Kingston Honda is a 40,000 sf automotive sales and service center located in Kingston, New York that incorporates Honda's latest branded elements. The spacious showroom contains vehicle displays, open sales stations, and a sizable customer lounge. The service center features a two lane service drive entrance with high speed doors, 16 service bays and multiple alignment and scissor lifts. Amenities include a multi-level parts storage distribution center, 2 detail bays and a full service car wash to accommodate the Lia Auto Groups current and future needs.



Laks Acura  
Buffalo, New York  
(in progress)



SQUARE FOOTAGE  
10,000

DELIVERY METHOD  
Design-Build Renovation

BBL is currently in the process of renovating and expanding this Acura car dealership for Laks Acura in Buffalo, New York

## Lia Honda Brewster Sales Center Brewster, New York



SQUARE FOOTAGE  
16,877

DELIVERY METHOD  
Design-Build



The previously developed site included an existing structure which was demolished and cleared for the construction of a new 16,877 sf Sales Center. Having worked with the Lia Auto Group on several previous dealerships, BBL provided valuable input during the pre-construction phase. The multilevel center's 12,258 sf upper floor houses the showroom and administration offices. The 4,619 sf lower level includes additional administration offices and a new vehicle delivery area.



## Lia Honda Brewster Service Center

Brewster, New York



SQUARE FOOTAGE  
23,679

DELIVERY METHOD  
Pre-Construction  
Design-Build

An existing structure was demolished and the site cleared to make way for the new 23,679 sf facility. The Lia Auto Group, once again called upon BBL for our extensive knowledge to provide services from pre-construction during the design development phase all the way through construction. The Service Center includes a 6,448 sf customer, administration, and service drive. The large 17,231 sf Service and Parts area includes 20 service bays, a full service car wash, one alignment bay, and one detail bay.

Lia Honda  
Albany, New York



SQUARE FOOTAGE  
*New Construction:* 6,400 sf  
*Renovation:* 4,000 sf

DELIVERY METHOD  
Design-Build

BBL was asked to provide additional space for corporate offices as well as mandatory vehicle queuing of 10 cars in the service reception drive of this existing Honda Dealership. Working closely with the Owner and our architect we were able to meet the requirements set forth by Honda while providing value engineering options which allowed the project to proceed in tough economic times. BBL constructed a 6,400 square foot new facility and renovated an additional 4,000 square feet of the existing facility, all within a 6 month schedule.



# Northway Toyota

Latham, New York



SQUARE FOOTAGE  
46,000

DELIVERY METHOD  
Design-Build



BBL was selected by Northway Toyota to demolish their existing dealership and build a new 46,000 sf Toyota Dealership. The new dealership includes a six car showroom, a three bay service drive, and 32 service bays.

# Goldstein Chrysler Dodge Jeep Ram

Latham, New York



SQUARE FOOTAGE  
37,241

DELIVERY METHOD  
Design-Build



What was once Big Al's Used Cars was knocked down to welcome this 37,241 sf full-service Chrysler Dodge Jeep Ram. Goldstein's newest facility includes a showroom, service area, service express lane, and a full-service car wash for Goldstein Customers.



## Goldstein Subaru Albany, New York



SQUARE FOOTAGE  
18,000

DELIVERY METHOD  
Design-Build

The existing Goldstein Subaru facility underwent a complete renovation. The project includes the addition of a 3,700 sf showroom with an exterior car display, renovation of the existing 8,000 sf showroom, a new 6,700 sf service area addition with a two-lane service drive thru and a new 1,200 sf isolated car wash bay.

# Goldstein Buick GMC

Colonie, New York



SQUARE FOOTAGE  
16,000

DELIVERY METHOD  
Design-Build/Renovation



This existing Buick GMC dealership was remodeled to meet the growth and need of the Goldstein Auto Group. The existing 4,500 sf showroom was removed, while the existing service area was salvaged and remained in business throughout the project duration. A temporary partition was constructed to isolate construction activity from the ongoing operation of the service area, and sales was temporarily relocated to trailers on site while the brand new 15,000 sf showroom was built.

The new expansive showroom includes a customer lounge, children's area, offices and meeting space, new car delivery, ancillary storage, and parts rooms. The second floor executive and administrative office area is an open mezzanine overlooking the showroom. Additionally, a new two-lane service drive-thru and car wash were built adjacent to the existing service area.

## Destination Kia Albany, New York



SQUARE FOOTAGE  
26,000

DELIVERY METHOD  
Design-Build

The extensive renovation and addition to the existing facility included a new facade, a new showroom and service garage, renovation of the original service area, and the addition of a second floor storage mezzanine.

The new 7,000 sf showroom was completely overhauled highlighting a reconfigured space design with new finishes and fixtures. A 10,500 sf Star Steel Building with epoxy flooring was constructed to house the dealership's new service garage. The back of the house was renovated as well to include new customer restrooms, a staff locker room and bull pen.

Associated site work including new paving, drainage systems and protective guide rails around the building was completed.



## Destination Nissan Albany, New York



SQUARE FOOTAGE  
8,500

DELIVERY METHOD  
Design-Build



Renovation of this Nissan dealership required the installation of a one foot wide by 80 foot long separation wall between the facility and the adjacent Kia dealership. The existing showroom was demolished with a new 5,600 space being constructed.

The renovation also included new finishes, fixtures and signage in the Service Drive Thru and Service Writers' areas, back of the house upgrades and new epoxy flooring in the Service Garage and Parts area. Associated site work including guide rails around the building and new paving and markings was completed.



## Capital Luxury Jaguar & Land Rover Albany Colonie, New York



SQUARE FOOTAGE  
8,000

DELIVERY METHOD  
Design-Build

Renovation of the Jaguar and Land Rover dealership included a complete rehab of the 5,000 sf showroom; 1,800 sf detail bay addition; and 800 sf service write-up drive-thru and canopy. The project included a new facade, with the trademark towers for both manufacturers, per their corporate design and a test track located in front of the showroom to demonstrate the vehicles' capabilities on extreme angles.

# OTTO Cadillac

Colonie, New York



SQUARE FOOTAGE  
13,000

DELIVERY METHOD  
Design-Build

This project was a shuttered Saturn dealership, remodeled into a new showroom and service area for Otto Cadillac. The façade of the building was removed in its entirety, with the majority of the interior gutted. The new showroom includes a lounge, sales offices, and room to display three vehicles. The service area added a write-up drive-thru, offices, collision/estimating and delivery space. Some existing office space, restrooms, parts, and a locker room were salvaged and given new finishes to match the rest of the renovated facility. The entire facility was given a new mechanical system and new roof.

The Cadillac corporate design included simulated limestone for the exterior, with high-end finishes throughout including a porcelain tile, frame-less glass doors, and wood paneling. Exterior work included repaving, re-striping, and a stamped concrete patio and vehicle display area.





## DePaula Chevrolet Albany, New York



SQUARE FOOTAGE  
12,000

DELIVERY METHOD  
General Contractor

Construction of this new 12,000 square foot showroom and the reconfiguration of the site was a challenge due to the logistics of keeping the dealership showroom and service shop fully operational. The new facility was completed with great success by July of 2006.

# Cooley Motors

North Greenbush, New York



SQUARE FOOTAGE  
8,000

DELIVERY METHOD  
Design-Build

This existing Mazda and Volkswagen dealership was remodeled in a complex and phased renovation consisting of a new car wash, two detailing bays, and a full renovation of the showroom and garage. The existing showroom was gutted and expanded with new defined entrances for each brand per the manufacturer's specifications. The renovated showroom and adjacent areas include offices, customer lounge and a kids' area. Service now has a dedicated entrance and corridor, and a customer lounge and write-up area for each brand.

# Lia Chrysler Dodge Jeep Ram

Albany, New York



SQUARE FOOTAGE  
26,000

DELIVERY METHOD  
Design-Build



The dealership was constructed within an existing auto plaza containing another brand, as well as, a collision and rental center. The new dealership is complete with a 6,500 sf showroom, 1,000 sf new vehicle delivery, two-lane service drive, and 12 service bays. The project also added 200 parking spaces to the auto plaza.



Lia Hyundai  
Albany, New York



SQUARE FOOTAGE  
26,000

DELIVERY METHOD  
General Contractor

BBL provided a phased construction process for this car dealership. Eighty percent of the facility was constructed only three feet away from the existing dealership. Once the operation was relocated into the new building, the existing facility was demolished allowing for the remainder of the new construction to be completed. The dealership remained operational during the entire process with no loss of sales or service business.

## Lia Hyundai Hartford, CT



SQUARE FOOTAGE  
33,000

DELIVERY METHOD  
Design-Build



This project took an existing aging and inefficient Hyundai dealership and demolished the existing showroom while salvaging and renovating the existing service area located in the rear half of the building.

The new, bigger, 14,500 sf showroom addition was built where the old showroom once stood, with sales offices, general office space, a conference room and break room, and the capacity to comfortably display eight vehicles. Both the new and existing spaces were outfitted with premium finishes such as ceramic tile in the showroom and epoxy floor throughout the service area. All mechanical, electrical and plumbing systems were replaced and upgraded, and the site was repaved and striped with new curbs and sidewalks, site lighting, signage and landscaping.

The renovated service area has 14 service bays, with a parts room, locker room, and detail area with an adjacent new waiting area and covered service drop-off area incorporated into the new structure.

Lia Infiniti  
Latham, New York



SQUARE FOOTAGE  
22,000

DELIVERY METHOD  
Design-Build

Using a Design/Build approach, BBL converted an existing 22,000 square foot Dodge dealership into a modern Infiniti dealership for the Lia Auto Group. With a fast track approach BBL completed the design and construction within 6 months, allowing the grand opening just prior to their busiest time of the year. Accelerated coordination between Infiniti, the Owner, Infiniti's corporate architects, our local architects and engineers was critical to keep the contractors on schedule. This facility incorporates a modern design with the latest technology and finishes available.



Lia Nissan  
Colonie, New York



SQUARE FOOTAGE  
27,000

DELIVERY METHOD  
General Contractor



BBL was selected to design and build the first Nissan prototype of it's kind in the Capital District. The project was delivered on schedule despite a complicated tight site and a winter construction schedule. This facility is one of the Northeast's premier Nissan dealerships.

# Lia Nissan

Glens Falls, New York



SQUARE FOOTAGE  
18,228

DELIVERY METHOD  
Design-Build



A repeat client, the Lia Auto Group involved BBL early in the design development phase of the Lia Nissan dealership. The new facility was constructed on a vacant site and includes a 9,535 sf showroom and 9,095 sf of service area with eight service bays, one wash bay and one alignment bay.

# Lia Toyota

Colonie, New York



SQUARE FOOTAGE  
60,000

DELIVERY METHOD  
Design-Build

This new showroom and service facility was designed and constructed to match the ever growing quality and demand for Toyota products. Energy efficient and environmentally sensitive construction paralleled the corporate goals of Toyota.

The project was constructed in two phases. First, the new showroom replaced the inadequate and aging adjacent facility. Once completed, Phase II commenced which included the partial demolition and renovation/reconstruction of the existing facility into a modern regional collision center for the Lia Auto Group.



# Hartford Toyota Superstore

Hartford, Connecticut



SQUARE FOOTAGE  
50,494

DELIVERY METHOD  
Design-Build

The Hartford Toyota Superstore totals over 50,000 sf with various features. A showroom, NVD (New Vehicle Delivery), services drive with quick check & alignment, service shop with 25 lifts, separate detail shop with 4 vehicle detail bays, and a car wash for new and service vehicles are all included in this 50,494 sf foot print. This project was completed a month and a half ahead of schedule.

# Sun Auto Warehouse

Cicero, New York



SQUARE FOOTAGE  
42,400

DELIVERY METHOD  
Design-Build



Sun Auto is a used car dealer. This project is one of a kind designed specifically for Sun Auto including their new branding and image. The Cicero location holds their flagship store, all other locations will be brought up to the new image and branding. The project incorporated the infrastructure for all company headquarter administrative operations, showroom, service facility, and New Vehicle Delivery.