

Research Article

GC Method Validation for the Analysis of Menthol in Suppository Pharmaceutical Dosage Form

Murad N. Abualhasan,¹ Abdel Naser Zaid,¹ Nidal Jaradat,¹ and Ayman Mousa²

¹Department of Pharmacy, Faculty of Medicine & Health Sciences, An Najah National University, Nablus, State of Palestine

²R&D Department, Avalon Pharma, Riyadh, Saudi Arabia

Correspondence should be addressed to Murad N. Abualhasan; m.abualhasan@najah.edu

Received 26 November 2016; Revised 22 January 2017; Accepted 1 February 2017; Published 6 March 2017

Academic Editor: Ashish Rawson

Copyright © 2017 Murad N. Abualhasan et al. This is an open access article distributed under the Creative Commons Attribution License, which permits unrestricted use, distribution, and reproduction in any medium, provided the original work is properly cited.

Menthol is widely used as a fragrance and flavor in the food and cosmetic industries. It is also used in the medical and pharmaceutical fields for its various biological effects. Gas chromatography (GC) is considered to be a sensitive method for the analysis of menthol. GC chromatographic separation was developed using capillary column (VF-624) and a flame ionization detector (FID). The method was validated as per ICH guidelines for various parameters such as precision, linearity, accuracy, solution stability, robustness, limit of detection, and quantification. The tested validation parameters were found to be within acceptable limits. The method was successfully applied for the quantification of menthol in suppositories formulations. Quality control departments and official pharmacopeias can use our developed method in the analysis of menthol in pharmaceutical dosage formulation and raw material.

1. Introduction

Menthol is a phytogenic essential oil that is considered as a monocyclic monoterpenoid alcoholic compound. The main form of menthol occurring in nature is (–)-menthol (Figure 1). It is isolated from various mint plants species such as *Mentha piperita*, *Mentha canadensis*, *Mentha arvensis*, and *Mentha spicata* [1]. Menthol can also be semisynthesized from other essential oils such as turpentine oil, eucalyptus oil, and citronella oil. Due to its peculiar and cooling properties, this natural compound has been used from centuries as a fragrance and flavor in the food and cosmetic industries [2, 3].

This natural compound is used widely in the medical and pharmaceutical fields for its biological effects such as analgesic, antifungal, antipruritic antibacterial, anticancer, and anti-inflammatory activities [4]. In addition, menthol is present in pharmaceutical preparations that are used as cooling agent in the counterirritant rubefacients, mouth and throat antiseptics, hemorrhoids, and many other pharmaceutical formulation [5–7]. Menthol is well known for its cooling sensation effect when it is chewed, inhaled, consumed, or applied to the skin due to its ability to chemically activate the

cold sensations transient receptor potential cation channel [8].

Menthol is also present in many suppository dosage form and widely sold in the local and international markets. It is mainly indicated for the treatment of occasional minor irritation, pain, and cough associated with cold or inhaled irritants [9, 10].

Many methods have been established for the analysis of menthol, including HPLC methods with fluorescence-labeling reagents [11], refractive index [12], and polarized photometric detector [13]. Normal-phase HPLC with refractive index detector has also been employed in the analysis of menthol [14]. However, these methods have low sensitivity. Gas chromatography is considered to be a sensitive method for the analysis of menthol and it has been widely employed in the analysis of menthol in food and cosmetics [15]. To the best of our knowledge, there is not a specific analytical method that has applicability of analyzing menthol in actual pharmaceutical samples such as suppositories. Moreover, none of the most recognized pharmacopeias include the analysis of menthol in suppository dosage form.

TABLE 1: The GC parameters.

Carrier gas	Helium			
	Rate (°C/minute)	Temperature (°C)	Hold time (minute)	Total time (minute)
Column oven temperature (programmed)	Initial	90	1.0	1.0
	15	181	3.0	18.0
		Total Time		19.0
Detector temperature	180°C			
Injector temperature	280°C			
Flow rate	5.0 mL/ minute (constant)			
Split ratio	50			
Injection volume	1 µL			
Gases flow rate	Makeup Gas			
	He → 30 mL/minutes			
	H2 → 30 mL/minutes			
	Air → 300 mL/minutes			

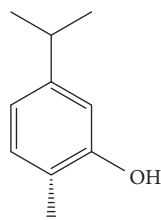


FIGURE 1: Menthol structure.

The objective of our work was to establish a simple and rapid analysis of menthol in suppository pharmaceutical products by GC. The method was validated according the international guideline described in the ICH and international pharmacopeias [16]. The method was validated in terms of linearity, precision, accuracy, and ruggedness [17]. The method can be routinely used for the purpose of determination of menthol in formulated suppositories and in raw material.

2. Experimental

2.1. Chemicals. The analytical standard menthol (purity > 99.57%) was purchased from Frey & Lau GmbH, Immenhachen, Henstedt-Ulzburg, Germany; menthol reference standard was purchased from USP [Catalogue number 1381709]. Ethanol absolute was of GC grade from Thermo Fisher Scientific (Fair Lawn, New Jersey, USA).

Ultrapure water was obtained from Elga pure water system (Elga, model LA621, UK).

All other reagents were of pharmaceutical grade and used as received.

2.2. Chromatographic Conditions. Chromatographic separation was performed using capillary column, VF-624 ms (phase composition: 6% cyanopropylphenyl and 94% dimethylpolysiloxane), with film thickness of 1.8 µm, and length of 60 m. The experiments were performed on Thermo GC Model (Trace Ultra Gas Chromatography, Thermo

Fisher Scientific, USA) equipped with autosampler (Thermo Triplus) and a flame ionization detector (FID). The GC parameters are summarized in Table 1.

2.3. Preparation of Sample and Standard Solutions. The internal standard thymol (2% w/v) was prepared by dissolving in absolute ethanol. Standard solutions were prepared by weighing accurate weight of 30 mg of menthol working standards into 50 mL volumetric flask, adding 25 mL of ethanol, and sonicating for 5 minutes. 2.0 ml of the prepared Thymol Solution (Internal Standard) was added to it and the volume was completed to 25 ml with ethanol [18].

Sample preparation solutions were prepared by accurately weighing 3.0 g of smashed suppositories and were placed in 50 mL volumetric flask; then 5 mL of THF was added to it. The mixture was stirred vigorously for about 30 minutes on a shaker; then 2.0 mL of Thymol Solution (Internal Standard) was added to it and the volume was complete with diluents. The solution was filtered with cotton and with 0.22 µm pore filter and then injected directly. The final solution of the sample was kept at room temperature to avoid precipitation.

2.4. Assay Calculation. The percentage assay of menthol was calculated using the following formula [19]:

$$\text{Assay of methanol \%} = \frac{R_{\text{sple}} * W_{\text{std}} * P * 100\%}{R_{\text{std}} * W_{\text{sple}} * 9.682}, \quad (1)$$

where R_{sple} = Ratio of the peak area of menthol divided by the peak area of the thymol in sample preparation. R_{std} is the average ratio of the peak area of menthol divided by the peak area of the thymol in the standard preparations. W_{std} is the weight of menthol working standard (mg). W_{sple} is the weight taken in sample preparation (g). P is the purity of menthol working standard.

2.5. Method Validation

2.5.1. System Suitability and Precision. The system suitability parameter for 10 replicate injections of Menthol and Thymol ratio was performed. The relative standard deviation (RSD) of

ratio of the peak area of Menthol and Thymol of the replicate injections of standard solution should have an RSD not more than 2.0%.

2.5.2. Linearity and Range. In order to evaluate the linearity of assay procedure, a series of standards at different concentrations of the target concentration for menthol was prepared in the range of 0.3–0.9 mg/mL which corresponds to 50%–150% relative to menthol measuring concentration in standard solution. After chromatographing each preparation in triplicate, a linear regression analysis was performed on the average peak ratio versus the concentrations of the levels studied.

The correlation coefficient was calculated by plotting component average peak ratio versus component concentrations. Linear regression was applied to the plots and the correlation coefficients for component data were calculated. In order for the test to pass the square of correlation coefficient should not be less than 0.998.

The limit of detection (LOD) and limit of quantification (LOQ) were calculated based on the standard deviation (s.d) of the data and the slope of the regression line. The LOD was calculated according to the following equation: $3.3 * s.d / \text{slope}$. The LOQ was calculated according to the following equation: $10 * s.d / \text{slope}$.

2.5.3. Accuracy. The accuracy was performed based on three concentrations around the test concentration (80%, 100%, and 120%); three replicates of each concentration were injected. The percentage of recovery and percentage of RSD were calculated for each of the repeated samples.

2.5.4. Method Precision. In order to evaluate the precision of assay method of menthol, six samples of suppositories were prepared and injected in replicate. The percentage of recovery and percentage of RSD were calculated for each of the repeated samples. The percentage of RSD must be less than 2.0 and all percentages of accuracy results must be within the specifications (within $\pm 20.0\%$ of the actual amount for menthol).

2.5.5. Ruggedness of the Method. Ruggedness of the analytical method was performed by running samples in two days by different analysts, using different instruments. In order for the method to be rugged the percentage of RSD results between day 1 and day 2 must be less than or equal to 5 and all percentage of accuracy results must be within $\pm 20.0\%$ of the actual amount.

2.6. Stability of Analytical Solution. The stability of analytical solution was determined by analyzing menthol in both the standard solutions and sample solution over 24-hour period. The percentage of recovery of menthol was calculated versus the fresh injections for both standard solutions and sample solutions. In order to prove the stability of the solution the standard deviation of all the test solutions must be within $\pm 2.0\%$.

TABLE 2: System suitability and system precision result.

Injection number	Area of menthol (mVot)	Area of thymol (mVot)	Ratio
1	76756	124806	0.615
2	76491	124418	0.615
3	74717	122117	0.612
4	76281	125238	0.609
5	75446	123684	0.610
6	74402	121399	0.613
7	75591	124163	0.609
8	73692	121011	0.609
9	78280	125238	0.625
10	78409	125059	0.627
AVG	76007	123713	0.614
RSD%	2.052	1.308	1.071

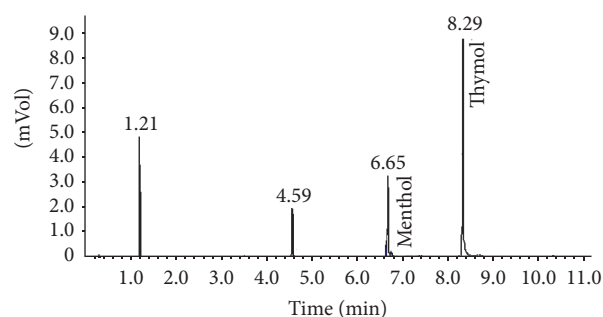


FIGURE 2: GC chromatogram of menthol and internal standard Thymol.

3. Result and Discussion

3.1. System Suitability and Precision. It is generally desirable to ascertain the suitability and effectiveness of the operating system when employing chromatographic methods such as gas chromatography to ascertain the effectiveness of the final operating systems; it should be subjected to a suitability test prior to use. The essence of such test is the concept that the electronics, the equipment, the specimens, and the analytical operations constitute a single analytical system, which is amendable to an overall test of the system functions.

The result of system precision of 10 replicate injections shows that the RSD value was 1.071 (Table 2).

The GC chromatogram showed well separated peaks for menthol and the thymol internal standard (Figure 2).

3.2. Method Validation

3.2.1. Linearity and Range. The correlation coefficient was calculated by plotting component average peak ratio versus component concentrations and was found to be 0.9998. Linear regression was applied to the plots and the slope was found to be 0.9775 with an intercept of -0.0112 (Table 3 & Figure 3).

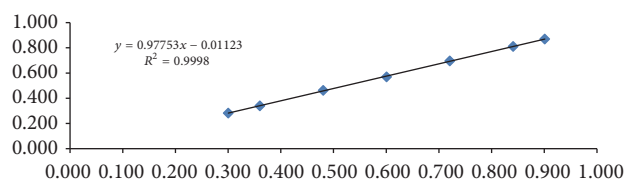


FIGURE 3: Linearity for menthol in suppository.

TABLE 3: Linearity results for menthol.

Level #	Concentration (mg/mL)	Ratio
1	0.300	0.283
2	0.360	0.340
3	0.481	0.463
4	0.601	0.569
5	0.721	0.696
6	0.841	0.812
7	0.901	0.869
R^2	0.9998	
Slope	0.9775	
Intercept	-0.0112	

TABLE 4: Accuracy results for menthol.

* Relative concentration%	Concentration (mg/mL)	Preparation #	Average % recovered
80%	0.48	1	99.5
		2	100.4
		3	101.3
		Average	100.4
		% RSD	0.896
100%	0.60	1	101.1
		2	98.4
		3	99.6
		Average	99.7
		% RSD	1.370
120%	0.72	1	101.3
		2	100.3
		3	100.1
		Average	100.6
		% RSD	0.64

* Relative to menthol concentration in standard solution.

Limit of detection and limit of quantitation were calculated and found to be 0.01 mg/mL and 0.03 mg/mL, respectively.

3.2.2. Accuracy. The purpose of this test was to prove accuracy of the method and show that none of the suppository excipients interfere with menthol active ingredients. The analytical methods were accurate, and the percentage of recovery for the all the tested samples was in the range of 98–102 and the RSD was less than 2. The test results are illustrated in Table 4.

TABLE 5: Method precision results.

Preparation #	Rep #	Ratio	Assay
1	1	0.8102	104.9
	2	0.8113	105.0
2	1	0.8042	102.3
	2	0.8109	103.1
3	1	0.8150	104.0
	2	0.8129	103.7
4	1	0.9122	104.6
	2	0.9229	105.8
5	1	0.9018	104.1
	2	0.9083	104.8
6	1	0.8586	103.7
	2	0.8555	103.4
Average			104.1
% RSD			0.9

3.2.3. Method Precision. The method is precise and the percentage of recovery results for preparations is shown in Table 5 and the percentage of RSD of the tested samples was calculated and found to be 0.9.

3.2.4. Ruggedness of the Method. The percentage of recovery results for twelve preparations was calculated and was found to be 105. The average percentage of RSD for day 1 and day 2 results was found to be 1.2. The method therefore is considered rugged.

3.3. Stability of Analytical Solutions. It is important to know if the solutions used in the analytical of both the standard solutions and the sample solutions are stable over time. This was determined by analyzing menthol over a period of 24 hours; the percentage of recovery was calculated versus the fresh injections for the standard solutions and sample solution. In order to prove the stability of the solution, the standard deviation for results should be within $\pm 2.0\%$. Both the standard solution and the sample solution were stable for 24 hours and the calculated percentage of RSD for the test results was less than 0.5.

4. Conclusion

A new and suitable GC assay method utilizing FID detection has been developed for the analysis of menthol in pharmaceutical suppositories. This method is novel, economical, rapid, and specific for the assay of that active ingredient menthol. The developed method has been validated in accordance with both FDA and ICH guidelines and showed excellent linearity, accuracy, precision, and system suitability.

Competing Interests

The authors declare that they have no competing interests.

References

- [1] G. P. P. Kamatou, I. Vermaak, A. M. Viljoen, and B. M. Lawrence, "Menthol: a simple monoterpene with remarkable biological properties," *Phytochemistry*, vol. 96, pp. 15–25, 2013.
- [2] R. Eccles, "Menthol and related cooling compounds," *Journal of Pharmacy and Pharmacology*, vol. 46, no. 8, pp. 618–630, 1994.
- [3] H. El-Zaiedi, J. Martínez-Tomé, Á. Calín-Sánchez, F. Burló, and Á. Carbonell-Barrachina, "Volatile composition of essential oils from different aromatic herbs grown in mediterranean regions of Spain," *Foods*, vol. 5, no. 2, article 41, 2016.
- [4] M. Stengel, A. Binder, O. Klebe, G. Wasner, J. Schattschneider, and R. Baron, "462 Topical menthol: stability of a sensory profile in a human surrogate model," *European Journal of Pain*, vol. 11, pp. 204–205, 2007.
- [5] J. S. Dambolena, A. G. López, M. C. Cánepa, M. G. Theumer, J. A. Zygodlo, and H. R. Rubinstein, "Inhibitory effect of cyclic terpenes (limonene, menthol, menthone and thymol) on *Fusarium verticillioides* MRC 826 growth and fumonisin B1 biosynthesis," *Toxicon*, vol. 51, no. 1, pp. 37–44, 2008.
- [6] B. Bromma, E. Scharein, U. Darsow, and J. Ring, "Effects of menthol and cold on histamine-induced itch and skin reactions in man," *Neuroscience Letters*, vol. 187, no. 3, pp. 157–160, 1995.
- [7] S.-H. Kim, S. Lee, S. R. Piccolo et al., "Menthol induces cell-cycle arrest in PC-3 cells by down-regulating G2/M genes, including polo-like kinase 1," *Biochemical and Biophysical Research Communications*, vol. 422, no. 3, pp. 436–441, 2012.
- [8] G. Yosipovitch, C. Szolar, X. Y. Hui, and H. Maibach, "Effect of topically applied menthol on thermal, pain and itch sensations and biophysical properties of the skin," *Archives of Dermatological Research*, vol. 288, no. 5-6, pp. 245–248, 1996.
- [9] C. S. Yong, Y.-K. Oh, S. H. Jung et al., "Preparation of ibuprofen-loaded liquid suppository using eutectic mixture system with menthol," *European Journal of Pharmaceutical Sciences*, vol. 23, no. 4-5, pp. 347–353, 2004.
- [10] R. J. Thompson, "Treatment of interstitial cystitis using topical application of menthol and L-arginine," Google Patents, 2003.
- [11] Y.-T. Lin, H.-L. Wu, H.-S. Kou, S.-M. Wu, and S.-H. Chen, "Enantiomeric analysis of (+)-menthol and (-)-menthol by fluorogenic derivatization and liquid chromatography," *Journal of Chromatography A*, vol. 1087, no. 1-2, pp. 223–228, 2005.
- [12] K. A. Shaikh and S. D. Patil, "Sensitive and selective method for the analysis of menthol from pharmaceutical products by RP-HPLC with refractive index detector," *Journal of Pharmacy and Bioallied Sciences*, vol. 2, no. 4, pp. 360–364, 2010.
- [13] K. Hamasaki, K. Kato, T. Watanabe et al., "Determination of l-menthol in pharmaceutical products by high performance liquid chromatography with polarized photometric detection," *Journal of Pharmaceutical and Biomedical Analysis*, vol. 16, no. 8, pp. 1275–1280, 1998.
- [14] D. Barron and A. Pabst, "Recent advances in high-performance liquid chromatography of volatile natural products," in *Modern Phytochemical Methods*, N. H. Fischer, M. B. Isman, and H. A. Stafford, Eds., pp. 33–74, Springer, Boston, Mass, USA, 1991.
- [15] M. Li, D. L. Nelson, and P. Sporns, "Determination of menthol in honey by gas chromatography," *Journal of AOAC International*, vol. 76, no. 6, pp. 1289–1295, 1993.
- [16] International Conference on Harmonization Fifth CD ROM: Regulatory Affairs Journal, 2001.
- [17] J. Ermer and J. H. M. B. Miller, *Method Validation in Pharmaceutical Analysis: A Guide to Best Practice*, John Wiley & Sons, 2006.
- [18] IOFI Working Group on Methods of Analysis, "Guidelines for the quantitative gas chromatography of volatile flavouring substances, from the Working Group on Methods of Analysis of the International Organization of the Flavor Industry (IOFI)," *Flavour and Fragrance Journal*, vol. 26, no. 5, pp. 297–299, 2011.
- [19] A. Li and T. Imasaka, "Internal standards for use in the comprehensive analysis of polychlorinated aromatic hydrocarbons using gas chromatography combined with multiphoton ionization mass spectrometry," *Journal of Chromatography A*, vol. 1470, pp. 111–117, 2016.

