

# GENERAL MEDICINE



**WelchAllyn®**

Advancing Frontline Care™

# Welch Allyn Advancing Frontline Care

In general medicine practices, the people you see every day are more than just your patients—they are your friends and neighbors. And when patients visit your office, they're not just going to the doctor—they're going to their doctor.

For nearly 100 years, Welch Allyn has been right there with you, providing innovative, affordable healthcare products and solutions that allow you to more effectively diagnose and treat your patients—whether you are caring for infants, the elderly, or any age in between.

At Welch Allyn, “innovation” means providing you with state-of-the-art products designed to meet your need for simplicity and efficiency. So you can see more patients, perform more procedures, and provide more complete on-site care.

Welch Allyn is proud to be a longstanding Corporate Member of the American Academy of Family Physicians Foundation, lending our expertise and support to the ongoing advancement of family medicine.

CORPORATE MEMBER

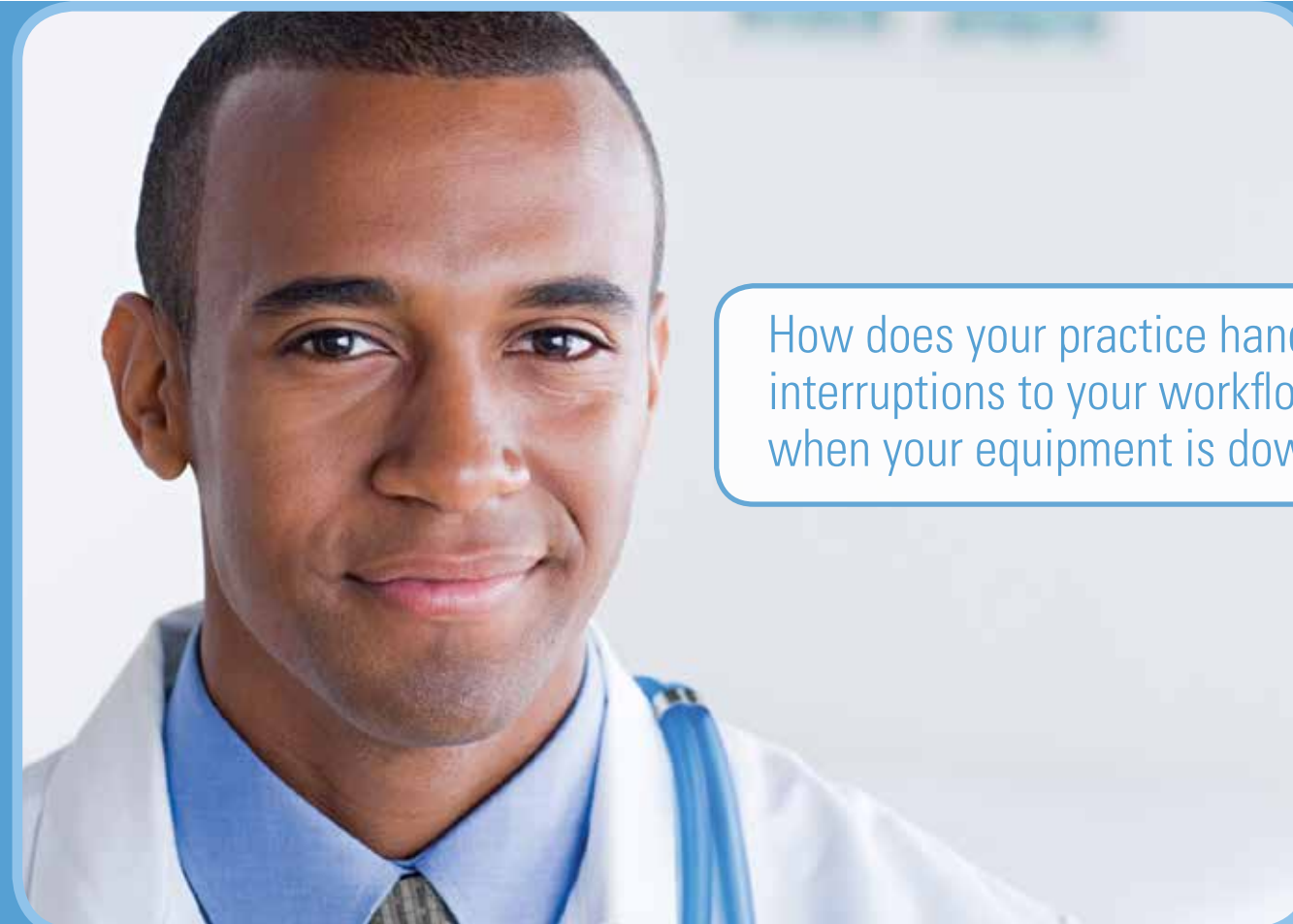


AMERICAN ACADEMY OF  
FAMILY PHYSICIANS FOUNDATION

## GENERAL MEDICINE

- 1 Spot Vital Signs® LXi Device Pg. 18
- 2 Green Series™ 777 Integrated Wall System Pg. 4
- 3 Green Series GS 600 Minor Procedure Light Pg. 24
- 4 ABPM 6100 Pg. 15
- 5 Ear Wash System Pg. 23
- 6 Green Series Procedure Headlight Pg. 25
- 7 MicroTym®3 Tympanometric Instrument Pg. 22
- 8 AudioScope® 3 Screening Audiometer Pg. 22
- 9 CP 200™ ECG Pg. 16
- 10 Harvey™ Elite® Stethoscope Pg. 13
- 11 KleenSpec® Vaginal Specula Pg. 20
- 12 KleenSpec Cordless Illuminator Pg. 20
- 13 Braun ThermoScan® PRO 4000 Thermometer Pg. 9
- 14 SureSight® Vision Screener Pg. 23

For more information on the products in this catalog, visit our website at [www.welchallyn.com](http://www.welchallyn.com).



How does your practice handle interruptions to your workflow when your equipment is down?

## Comprehensive Partnership Program


A support services program designed specifically for your busy medical practice.

The Welch Allyn Comprehensive Partnership Program is designed to help manage your equipment and ensure it helps you provide continuous care for your patients while improving the bottom line. It's simple, cost-effective and from a partner you've come to rely on—Welch Allyn.

- Remote Technical Support—Troubleshoot issues, download updates and more using our trained technical staff and the Welch Allyn Service Tool
- Parts and Labor—Everything is included in your agreement
- Faster Turnaround Time—Prompt, dependable service to help ensure minimal down time
- Loaner Coverage—Advanced replacement or access to loaners during repair to ensure equipment is always available
- Free Shipping—All costs associated with shipping the product will be covered
- Training Discounts—Special pricing for clinical and technical training when needed and where available
- Calibration—As an available option, fully covered costs to have your device calibrated and certified annually
- Accessory Protection—Replacement of most of the accessories originally included with your device

### Advantages of the Comprehensive Partnership Program over a Standard Warranty

Make sure you have the support you need. While product warranties provide basic assurance of Welch Allyn hardware quality, they may not include the full range of services and support you need for achieving your service level and cost objectives.

 **Look for the Partners in Care icon** throughout our catalog for products that are offered with Partners in Care Service Agreements. Refer to page 26 for part numbers.



Visit [welchallyn.com/services](http://welchallyn.com/services) for more information.

# Welch Allyn Integrated Wall System Solutions

- Eliminate frustrating and time-consuming searches for individual pieces of equipment
- Prevent equipment from being lost, stolen or misplaced
- Configure wall systems based on your workflow needs
- Standardize or choose the technology you need for each facility
- Upgrade to the Welch Allyn LED Replacement Lamps for greater energy efficiency and lower cost of ownership



### Connex® Vital Signs Monitor

- Connectivity ready
- Full automation of digital parameters
- Optional SpO<sub>2</sub>



### Connex® ProBP™ Digital Blood Pressure Device

- Connectivity ready
- Automated blood pressure



### Wall Aneroid

- Mechanical/traditional blood pressure



### SureTemp® Plus 690 Electronic Thermometer

- Provides accurate oral temperature readings in about 4 to 6 seconds, 10- to 13-second pediatric axillary and rectal temperatures and 12- to 15-second adult axillary temperatures



### Braun ThermoScan® PRO 4000 Ear Thermometer

- Ergonomically designed ear thermometer to take temperatures easily and accurately



### PanOptic™ Ophthalmoscope

5x larger field of view of the fundus vs. standard ophthalmoscopes in an undilated eye (25° vs. 5°).

- #11810 PanOptic Ophthalmoscope
- #11820 PanOptic Ophthalmoscope with Cobalt Blue Filter and Add-On Corneal Magnifying Lens



### Coaxial Ophthalmoscope

Multiple aperture/filter options provide long-lasting, reliable performance for general and specialist examinations.

- #11720 Includes: 6 Apertures and Red-free, Cobalt Blue, and Polarizer Filters



### MacroView™ Otoscope

A nearly complete view of the tympanic membrane with approximately twice the field of view and 30% greater magnification than a traditional otoscope.



### FlexiPort® Blood Pressure Cuffs

Reusable or disposable unique FlexiPort fitting enables true cuff standardization throughout your facility



### KleenSpec® Disposable Specula Dispenser

Offers optimum organization of disposable otoscope tips



### Pneumatic Otoscope

Provides bright white light output and a rotating lens with ultraseal.

## Connex® Integrated Wall System

The integration of connectivity-ready vital signs management and physical assessment tools in one system helps enhance clinical decision-making, improves patient safety and saves valuable time.

- Allows clinicians to immediately obtain and view all necessary patient data, then send it directly to an EHR system.
- Provides accurate data every time, speeding decision-making and improving patient safety.
- Configure your wall system based on your workflow needs.
- Open architecture design allows you to expand your system.
- Eliminates frustrating and time-consuming searches for individual pieces of equipment throughout the facility.
- Prevents tools from being lost, stolen or misplaced.
- Enhances the visibility of information to your patients and improves communication and compliance.
- Saves valuable floor space and minimizes device wear and tear.

### FOUR COMMON SYSTEMS DESIGNED FOR GENERAL MEDICINE

- #84NTVXC-B Connex Integrated Wall System with Blood Pressure, Nellcor® SpO<sub>2</sub>, SureTemp Plus, Coaxial and Macroview
- #84MTVXC-B Connex Integrated Wall System with Blood Pressure, Masimo® SpO<sub>2</sub>, SureTemp Plus, Coaxial and Macroview
- #84NTVXP-B Connex Integrated Wall System with Blood Pressure, Nellcor SpO<sub>2</sub>, SureTemp Plus, PanOptic and Macroview
- #84MTVXP-B Connex Integrated Wall System with Blood Pressure, Masimo SpO<sub>2</sub>, SureTemp Plus, PanOptic and Macroview



## Green Series™ 777 Integrated Wall System

Standardize your facility with a sturdy, predrilled mounting board that mounts easily to any wall.

- Help reduce facility cost with an energy-efficient product
- Help improve workflow with contoured handles that automatically turn on/off
- Configure to meet your needs with your choice of optional KleenSpec® Disposable Diagnostic or Pneumatic Specula Dispenser
- Durable, easy-to-clean, high-impact ABS housing

### FIVE COMMON SYSTEMS DESIGNED FOR GENERAL MEDICINE

- #77791-1MPX Wall Board, GS 777 Wall Transformer, Wall Aneroid, MacroView Otoscope, PanOptic Ophthalmoscope (#11810), SureTemp Plus Thermometer, Specula Dispenser
- #77791-MX Wall Board, 777 Wall Transformer, Wall Aneroid, MacroView Otoscope, Coaxial Ophthalmoscope, SureTemp Plus Thermometer, Specula Dispenser
- #77791-2MPX Wall Board, 777 Wall Transformer, Wall Aneroid, MacroView Otoscope, PanOptic Ophthalmoscope (#11820), SureTemp Plus Thermometer, Specula Dispenser
- #77792-M Wall Board, GS 777 Wall Transformer, Wall Aneroid, MacroView Otoscope, Coaxial Ophthalmoscope, Specula Dispenser
- #77791-2MPXPROBP Wall Board, GS 777 Wall Transformer, Connex ProBP Digital Blood Pressure Device, MacroView Otoscope, PanOptic Ophthalmoscope, SureTemp Plus Thermometer, Specula Dispenser



**“We purchased the Welch Allyn Integrated Diagnostic System for all our new healthcare center exam rooms and have been extremely pleased. They’ve added to our efficiency.”**

— PAUL LOISELLE,  
EXECUTIVE DIRECTOR, HEALTH CARE  
UNIVERSITY OF NEW ENGLAND

“The PanOptic ophthalmoscope’s breadth of the field of view gives me a much greater visual appreciation of retinal structures. It increases my confidence during an exam.”

— LARRY CULPEPPER, MD,  
BOSTON, MA

## PanOptic™ Ophthalmoscope

The revolutionary PanOptic provides easy entry into the eye, together with a wider field of view to more easily observe conditions such as hypertensive retinopathy, diabetic retinopathy, and papilledema.

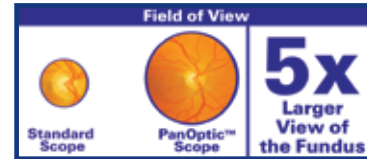
- Fast, easy entry into undilated pupils
- 5x larger view of the fundus vs. standard ophthalmoscopes in an undilated eye
- 25° field of view vs. the standard 5° field of view
- Greater working distance improves comfort for both practitioner and patient
- Helps detect corneal abrasions with cobalt blue filter and magnifying lens

#11820 PanOptic Ophthalmoscope with Cobalt Blue Filter and Corneal Viewing Lens

#11870 Patient Eyecups (package of 5)



#11820



## iExaminer™

Capture, Store, Send, Retrieve

- Adaptor to PanOptic allowing rapid capture of fundus images on your iPhone® 4/4S for easy, cost-effective documentation
- Send images to peers across the continuum of care at a moment's notice
- Easily portable, allowing you to capture images in any clinical environment
- Lower cost solution than traditional equipment for imaging the eye
- Facilitates patient education and compliance

#11840 iExaminer Adapter (only)

#11842 iExaminer Set, complete with #11820 PanOptic, #11840 adapter, #71900 Lithium Ion handle, #05815-M Soft Case



#11840



## 3.5 V Coaxial Ophthalmoscope

- Detect corneal abrasions with cobalt blue filter
- Coaxial optical system produces shadow-free spot viewing
- Polarizing filter virtually eliminates corneal reflection
- Sealed optics keep out dust and dirt

#11720 3.5 V Coaxial Ophthalmoscope



#11720

## Digital MacroView™ Otoscope



#23920

Computer and handle not included

Offering you clear, live and still images of the ear canal and tympanic membrane, the Digital MacroView Otoscope is a valuable tool for the diagnosis and treatment of your patients' ears. Easy to learn and use, the Digital MacroView is a plug-and-play system requiring no additional purchase of software.

- Improves communication, which can lead to better client compliance
- Excellent training aid for educational purposes
- Offers you the ability to view small details
- Allows you to store digital images in patient records for enhanced documentation of exam findings
- Provides you the ability to share images with other providers as visual descriptive reference

#23920 Digital MacroView Otoscope with 10 ft USB Cable and Set of Four Reusable Ear Specula

#52432-U Disposable KleenSpec® 524 Series Specula, 2.75 mm (850/bag, 10 bags/case)

#52434-U Otoscope Tips for MacroView™ Otoscope 524 Series Specula, 4.25 mm (850/bag, 10 bags/case) (80/box, 6 boxes/case)



#23820

## MacroView™ Otoscope

The MacroView Otoscope delivers almost twice the field of view at higher magnification compared to standard otoscopes, making it easier to visualize the auditory canal and tympanic membrane. This instrument is a significant advance in hand-held otoscopy, providing an improved view for enhanced learning and decision making.

- A nearly complete view of the tympanic membrane with approximately twice the field of view and 30% greater magnification than a traditional otoscope
- Better clarity and definition of landmarks
- The ability to adjust focus for variable ear canal length or farsighted eyes
- Tip grip for secure fastening and ejection of ear specula

#23820 MacroView Otoscope with Throat Illuminator

#23810 MacroView Otoscope

#52432-U Disposable KleenSpec® 524 Series Specula, 2.75 mm (850/bag, 10 bags/case)

#52434-U Otoscope Tips for MacroView™ Otoscope 524 Series Specula, 4.25 mm (850/bag, 10 bags/case) (80/box, 6 boxes/case)

#52700 Instrumentation Specula Slotted Tip for #23810 and #23820 MacroView Otoscope (48/box, 4 boxes/case)

## 3.5 V Operating Otoscope

- Open system makes procedures more convenient
- Rotatable lens and speculum



#21700

#21700 3.5 V Operating Otoscope

#52133 Disposable KleenSpec® 521 Series Specula, 3 mm (500/bag, 10 bags/case)

#52134 Otoscope Tips for 521 Series Specula, 4 mm (500/bag, 10 bags/case)

#52135 Pneumatic Otoscope 521 Series Specula, 5 mm (500/bag, 10 bags/case)

## 3.5 V Pneumatic Otoscope

- Fiber optic illumination produces cool light
- Rotatable head for left- and right-sided viewing
- Sealed system for improved pneumatic otoscopy



#20200

#20200 3.5 V Pneumatic Otoscope

#52133 Disposable KleenSpec® 521 Series Specula, 3 mm (500/bag, 10 bags/case)

#52134 Otoscope Tips for 521 Series Specula, 4 mm (500/bag, 10 bags/case)

#52135 Pneumatic Otoscope 521 Series Specula, 5 mm (500/bag, 10 bags/case)

## 3.5 V EpiScope® Skin Surface Microscope

Helps distinguish pigmented skin lesions such as basal cell carcinoma vs. malignant melanoma by providing the ability to magnify, illuminate and measure.

- Provides 10 times magnification and illumination for crisp, clear viewing
- Reticle contact plate facilitates measurement and tracking of lesion growth
- Halogen illumination for true tissue color
- Free reference guide available for patient education



#47300

#47300 3.5 V Halogen EpiScope with Reticle Contact Plate

### 3.5 V Lithium Ion Rechargeable Handle

Twice the power, half the weight.

- Smaller diameter and half the weight of a full-size 3.5 V NiCad handle
- 120 minutes of operation between charges
- Charges in Universal Desk Charger or with removable AC adapter
- Low-battery indicator light



#71900

- #71900 Handle with Removable AC Adapter
- #71910 Handle Alone, for use with Universal Desk Charger

### 3.5 V Nickel Cadmium Rechargeable Handle

Traditional chrome-plated brass construction for durability and long life .

- Smooth, nonabrasive knurled finish ensures a no-slip grip
- 60 minutes of operation between charges
- Can also be converted for use with standard C-cell batteries
- Charges in Universal Desk Charger and numerous stand consoles and well chargers



#71000-C

- #71000-A Rechargeable Handle
- #71000-C Rechargeable/Convertible Handle
- #71670 Rechargeable Handle for Desk/Well Chargers

### Universal Desk Charger Set

Keep your diagnostic instruments powered up and ready to go with our most popular handles and instruments in one easy-to-order set.

- Colored LEDs signal power is “on” and instruments are charging
- Advanced circuitry ensures constant, safe charging and optimum, long-lasting lamp life
- Optional—wall mount kit and/or specula tray

#### #71811-MPS

Universal Desk Charger plus:  
PanOptic™ Ophthalmoscope (#11810)  
MacroView™ Otoscope (#23810)  
(2) Lithium Ion Handles (#71910)

#### #71841-MS

Universal Desk Charger plus:  
Coaxial Ophthalmoscope (#11720)  
MacroView Otoscope (#23810)  
(2) NiCad Handles (#71670)



#71841-MS

### LED Replacement Lamps



30X the lamp life of a traditional halogen lamp in just one LED lamp

The Welch Allyn LED lamp provides up to 80% cost savings over the life of the lamp versus our equivalent halogen lamp, plus:

- Triple the examination time on a fully charged battery handle
- Consistent color even when light intensity is reduced
- LED color and patented circuitry designed specifically for intended examinations
- Lower heat buildup for increased clinician and patient comfort
- 7-year guarantee

| LED Lamp Part # | Device Part #                  | Description                               |
|-----------------|--------------------------------|---|
| 03100-LED       | Traditional Diagnostic Oscopes |   |
|                 | 20000                          | Otoscope/Throat Illuminator               |
|                 | 20200                          | Pneumatic Otoscope                        |
|                 | 21700                          | Operating Otoscope                        |
| 06500-LED       | MacroView™ Diagnostic Oscopes  |   |
|                 | 23810                          | MacroView™ Otoscope                       |
|                 | 23820                          | MacroView™ Otoscope/Throat Illuminator    |
|                 | 23920                          | Digital MacroView Otoscope                |
| 04900-LED       | Traditional Ophthalmoscopes    |   |
|                 | 11720                          | 3.5 V Coaxial Ophthalmoscope              |
|                 | 11730                          | AutoStep® Coaxial Ophthalmoscope          |
|                 | 11735                          | Prestige™ Coaxial-Plus Ophthalmoscope     |
| 03800-LED       | PanOptic™ Ophthalmoscopes      |   |
|                 | 11810                          | PanOptic™ Ophthalmoscope                  |
|                 | 11820                          | PanOptic™ Ophthalmoscope/Blue Filter/Lens |

### SureTemp® Plus 690 Electronic Thermometer



Easy to use with intuitive operation and improved accuracy. The device takes approximately 4- to 6-second oral temperatures, 10- to 13-second pediatric axillary and rectal temperatures, and 12- to 15-second adult axillary temperatures.

- Interchangeable, removable probe wells to reduce the risk of cross-contamination
- Large LCD displays temperatures in Fahrenheit or Celsius
- Last temperature recall
- Takes approximately 6,000 readings on 3 AA batteries

- #01690-200 SureTemp Plus 690 Thermometer with Oral Probe and Well (4 ft)
- #01690-300 SureTemp Plus 690 Thermometer with Wall Mount, Oral Probe and Well (9 ft)
- #01690-400 SureTemp Plus 690 Thermometer with Wall Mount, Oral Probe and Well (4 ft)
- #01690-201 SureTemp Plus 690 Thermometer with Rectal Probe and Well (4 ft)
- #01690-301 SureTemp Plus 690 Thermometer with Wall Mount, Rectal Probe and Well (9 ft)
- #05031-101 Probe Covers (box of 1,000)



#01690-200

### BRAUN ThermoScan PRO 4000 Ear Thermometer



The speed and accuracy you need for all types of patients. The exclusive ExacTemp™ technology provides an active user feedback system to ensure proper positioning.

- Excellent accuracy and repeatability through a preheated probe tip and sensor
- Probe cover detection system ensures a new probe cover is used each time, ensuring precise infrared heat transfer for accurate temperatures
- Easy-to-read LCD displays temperature in Fahrenheit or Celsius
- Last temperature recall
- Optional charging and security features with use of Base Station

- #04000-200 Braun ThermoScan PRO 4000
- #24001-1000 Recharging Base Station
- #05075-800 Probe Covers (case of 800)



#04000-200



#DS58-11  
(Adult cuff not shown)

## DS66 Trigger Aneroid

Innovative trigger-release design for easy operation.

- Certified accuracy to  $\pm 3$  mmHg
- Withstands 30" drop
- Laser-engraved dial face for accuracy
- Jeweled movement for long life
- Trigger deflation valve for smooth, one-finger operation
- Latex free for safety
- 15-year calibration warranty



#5098-27

- #5098-27 Gauge with Reusable One-Piece Adult Cuff
- #5098-30 Multi-Cuff Kit with Reusable One-Piece Cuff (child print, small adult, adult, large adult) and Zippered Case
- #5098-30CB Multi-Cuff Kit with Two-Piece Cuff and Bladder (child print, adult, large adult) and Zippered Case

## Tycos® DS58 Classic Aneroid

Unsurpassed reliability in a traditional, handheld design with gear-free DuraShock™ technology.

- Certified accuracy to  $\pm 3$  mmHg
- Withstands 60" drop
- Thumbscrew bleed valve
- Laser-engraved dial face for accuracy
- Jeweled movement for long life
- Premium inflation system for comfort
- Latex free for safety
- Lifetime calibration warranty

- #DS58-11 Gauge with Reusable One-Piece Adult Cuff and Zippered Case
- #DS58-MC Multi-Cuff Kit with Reusable One-Piece Cuff (child print, small adult, adult, large adult) and Zippered Case



#5090-02

## DS48A Classic Pocket Aneroid

The Welch Allyn Tycos® DS48A Classic pocket-style aneroid, featuring DuraShock™ technology, is lightweight and will not weigh down a cuff on a patient's arm.

- Certified accuracy to  $\pm 3$  mmHg
- Laser-engraved dial face guarantees consistent, accurate readings
- Withstands 60" drop
- Convenient metal clip
- Jeweled movement for longer life
- Lifetime calibration warranty

- #DS48A Gauge Only
- #5090-02 Gauge with FleixPort® Adult Cuff



#DS45-11

## DS45 Integrated Aneroid

The first gear-free, shock-resistant aneroid sphygmomanometer with integrated cuff.

- Certified accuracy to  $\pm 3$  mmHg
- Withstands 30" drop
- Laser-engraved dial face for accuracy
- Gauge rotates 360° for easy viewing and snaps directly into cuff for quick cuff change
- Latex free for safety
- 10-year calibration warranty

- #DS45-11 Aneroid with Reusable One-Piece Adult Cuff
- #DS45-11C Aneroid with Reusable One-Piece Adult Cuff and Zippered Case

## Wall and Mobile Aneroids

Improved ergonomics and a modern design make this an easy-to-use and attractive blood pressure aneroid. Based on nearly a century of experience building and designing innovative blood pressure technology, it's the smart choice for accurate and reliable readings in your facility.

- Certified accuracy to  $\pm 3$  mmHg
- Laser-engraved dial face provides unmatched accuracy
- Recessed dial face and high contrast orange pointer increase visibility and reduce parallax errors
- Lifetime calibration warranty
- New 5-leg stand provides improved stability and maneuverability
- Latex and mercury free

- #7670-01 Wall Aneroid with Reusable One-Piece Adult Cuff
- #7670-03 Mobile Aneroid with Reusable One-Piece Adult Cuff



## Advanced DuraShock™ Technology

The unique design allows gauges with DuraShock Technology to be shock-resistant, providing additional durability and requiring calibration less often than many competing gauges. In fact, Welch Allyn gauges can fall 30 inches or 60 inches (depending on the gauge) onto a hard surface and still remain accurate. These gauges will provide more accurate readings with lower lifetime cost than traditional technology.



#7670-01



#7670-03

### SAFETY AND CONVENIENCE

Welch Allyn aneroids use reusable one-piece blood pressure cuffs, providing durable latex-free construction, bladderless design making cleaning easy and effective, and three-year warranty. Cuffs and bladder-style cuffs are available with all aneroids by adding "CB" to the part number (e.g., DS58-11CB).

WELCH ALLYN OFFERS MERCURY DISPOSAL. Mercury spills are a costly and hazardous distraction. In fact, some parts of the country are regulating and even banning medical products containing mercury, such as thermometers and sphygmomanometers. Welch Allyn is helping—with our own mercury-free sphygmomanometers, and with a program that will safely dispose of your existing mercury sphygmomanometers. For more information, contact your local Welch Allyn representative or visit the EPA website at [www.purdue.edu/dp/envirosoft/mercury/src/title.htm](http://www.purdue.edu/dp/envirosoft/mercury/src/title.htm)

## FlexiPort® Blood Pressure Cuffs

True standardization in a snap.

Long-lasting, easy to use, and affordable, Welch Allyn cuffs are the top choice for hospitals and clinics around the world. Why? Because Welch Allyn can offer you virtually every type, size, and configuration of cuffs, along with the ability to simplify inventory like no other cuff provider with our innovative FlexiPort® connection, which makes every cuff a one- or two-tube cuff.

- Easy one-hand attachment/detachment of tubing from FlexiPort makes changing cuffs much faster and easier
- Tested to withstand demanding clinical environments
- 3-year warranty
- Meets all the latest clinical guidelines for proper fit from AAMI and AHA
- Standardizing can reduce part numbers by up to 60%

The right cuff. The right tubes. At the right time.



The unique FlexiPort fitting enables true cuff standardization throughout your facility. With FlexiPort, finding the right cuff is made simpler than ever before by eliminating annoying hassles and frustrations of traditional tubes and fittings.

Simplify inventory by reducing part numbers

Once these FlexiPort fittings are attached to your blood pressure devices, you can buy cuffs without tubes and connectors—reducing part numbers by up to 60%.

Visit [welchallyn.com/flexiport](http://welchallyn.com/flexiport) to see how FlexiPort cuffs can improve your facility, in a snap.



Primary sizes are color-coded to make it easy to find the proper cuff size.

12 Latex-free material minimizes risk of allergic reactions.



Rotatable port reduces stress to the cuff improving patient comfort and cuff durability.



No sewn seams to tear or fray.



Folded edge reduces risk of cuts and scrapes, maximizing patient comfort.



#5079-325



Pediatric Head



#5079-135

## Professional Stethoscope

Comfortable and affordable, designed for general use.

- Stainless steel double-head (bell and flat diaphragm) chestpiece with nonchill rim
- Rotatable binaurals and interchangeable comfort sealing ear tips
- 28" length
- 5-year warranty
- Latex free

#5079-135 Professional Stethoscope, Adult, Double Head, Black

#5079-137 Professional Stethoscope, Adult, Burgundy

#5079-139 Professional Stethoscope, Adult, Navy

#5079-285 Professional Stethoscope, Adult, Forest Green

#5079-145 Professional Stethoscope, Pediatric, Double Head, Black

## Harvey™ DLX Stethoscope

Cardiology grade, developed for precision and acoustic clarity.

- Full-range cardiology/pulmonology stethoscope
- Chrome-plated brass chestpieces
- Available with double-head (bell and flat diaphragm) or rotatable triple-head (brass bell and flat or corrugated diaphragm) chestpieces
- Pediatric chestpieces available
- Rotatable binaurals and interchangeable comfort sealing ear tips
- Triple-leaf binaural spring encased in polyurethane allows adjustment without the risk of breaking
- 28" length
- 10-year warranty
- Latex free

#5079-325 Harvey DLX Stethoscope, Double Head, Black

#5079-326 Harvey DLX Stethoscope, Double Head, Burgundy

#5079-327 Harvey DLX Stethoscope, Double Head, Navy

#5079-328 Harvey DLX Stethoscope, Double Head, Forest Green

#5079-321 Harvey DLX Stethoscope, Triple Head, Black



#5079-125

## Harvey™ Elite® Stethoscope

Lighter weight, cardiology grade.

- Full-range cardiology/pulmonology stethoscope
- Double-head (bell and flat diaphragm) stainless steel chestpiece with nonchill rim
- Pediatric chestpieces available
- Rotatable binaurals and interchangeable comfort sealing ear tips
- Triple-leaf binaural spring encased in polyurethane allows adjustment without the risk of breaking
- 28" length
- 10-year warranty
- Latex free

#5079-125 Harvey Elite Stethoscope, Black

#5079-270 Harvey Elite Stethoscope, Burgundy

#5079-271 Harvey Elite Stethoscope, Navy

#5079-284 Harvey Elite Stethoscope, Forest Green



## CardioPerfect® Workstation Software

Easy-to-use, intuitive software that is EHR ready. For use with the Resting or Exercise ECGs, SpiroPerfect® Spirometer, PC-Based ECGs and ABPM.

Access your patient data across the entire family of cardiopulmonary products with Welch Allyn CardioPerfect Workstation Software. This software manages data from these different diagnostic tests in the same way, allowing you to store all of your patient information in the same record. This permits you to retrieve and analyze information quickly, allowing you and your staff to be more efficient.

- Retrieve records with the touch of a key, and review and edit right on the screen
- Store thousands of records with ease
- Access information from your exam rooms, your office, or at home
- Fax or e-mail reports directly for consults
- A vital component of any HIPAA-compliant program



## PC-Based Resting ECG

The Welch Allyn PCR-100 turns any PC into a full-featured electrocardiograph. Intuitive Windows® operation makes it easy for your staff to learn and use, while the power and features of a PC-based system will save money and increase utilization of existing equipment. And with its ability to connect with leading EHR systems, you'll be able to spend less time on paperwork and more time with your patients.

- Large-screen display saves time and eliminates repeat ECGs
- ECG measurements speed physician review and interpretation
- Programmable report formats that print on plain paper using inkjet or laser printer
- Optional ECG interpretation available
- Upgradeable—leverage your investment by adding exercise ECG, spirometry or ambulatory blood pressure

- #CPR-UI-UB-D PCR-100i PC-Based Resting ECG with interpretive software
- #CPR-UN-UB-D PCR-100 PC-Based Resting ECG (noninterpretive software)



## PC-Based SpiroPerfect® Spirometer

In seconds, you and your staff can see and compare accurate results from pulmonary function tests. You can clearly evaluate pulmonary obstruction or restriction, increase success rates of patients who are undergoing smoking cessation, show progress, and help pediatric patients comply with test procedures.

- Fast, reliable pre-/post-bronchodilator FVC, SVC and MVV testing with automatic interpretation and reversibility analysis
- Instantly verify quality and variability of test performance and compare previous tests using the trending tool
- Motivate children with incentive graphic—for pediatric patient coaching
- Reduce risk of cross-contamination with single-use disposable transducers

- #SPIRO-S PC Spirometer Module, with 3 L calibration syringe
- #SPIRO-NS PC Spirometer Module, without 3 L calibration syringe
- #703418 Disposable Flow Transducer, 25 pk
- #703419 Disposable Flow Transducer, 100 pk
- #703480 Calibration Syringe (3 liters)



#SPIRO-S

## PC-Based Exercise ECG

Welch Allyn PC-Based Exercise ECG Systems offer flexible and affordable clinical features to meet any testing requirements and provide advanced database functionality for paperless storage.

- 12-lead ECG mode for baseline ECGs
- Select commonly used stress protocols or customize your own
- Records and monitors all 12 leads simultaneously
- View any leads in 3-, 6-, or 12-lead screen formats
- Reports can be printed on demand or at predefined intervals
- Arrhythmia detection is available throughout the test
- Data is stored on hard drive, allowing access to test results at any time

- #101457 PCE-210 Exercise Stress System interpretive with computer and treadmill
- #CPSP-UN-UC-D-PT PCE-210 Exercise Stress System noninterpretive with computer and treadmill
- #CPSP-UN-UC-D-T PCE-210 Exercise Stress System noninterpretive with treadmill only



## Holter Systems

User-friendly, powerful systems that are tailored to meet your needs. Features easy-to-use software and recorders that can improve patient compliance.

### Office Holter Software (PCH-100)

Easy-to-use software with detailed analysis. Fast transfer of recordings and custom report formats.

- Intuitive menus allow you to easily program your test using Start Test Wizard
- Transfer recordings in just minutes
- Highlight key areas for further analysis with our unique summary results presentations



- #101510 Office Holter Software

### HR-100 Holter Recorder

- 2- to 3-channel recording
- 24-48 hours of recording time
- Pacer detection
- Wireless transfer to patient's ECG in real time to verify electrode quality and placement
- Remote initialization



- #401700 HR-100 Holter Recorder with 5-Lead Cable
- #401701 HR-100 Holter Recorder with 7-Lead Cable

### HR-300 Holter Recorder

In addition to the features offered in the HR-100, the HR-300 offers the following:

- Display in real-time ECG preview or test programming
- Remote initialization
- Capture test data at 200, 500 or 1000 samples per second



- #401704 HR-300 Holter Recorder with 7-Lead Cable

### Expert Holter Software (PCH-200)

In addition to all of the features offered in the PCH-100 software, the PCH-200 software offers the following:

- Review detailed views of results from any entry point: Forms, Arrhythmias, Heart Rate and FD review modes
- Utilize our comprehensive editing tools to: review and edit down to the beat level; relabel beats individually or as a form; mark, label and insert ECG strips as required; and mark and label regions as artifact/afib/flutter

- #101512 Expert Holter Software

## ABPM 6100

Accurate 24-hour ambulatory blood pressure monitoring with simple, one-button operation and powerful Windows®-based reporting software.

- Easy patient hook-up with unique sleeve cuffs
- Lightweight, compact and quiet for improved patient compliance
- Dynamic inflation automatically limits maximum cuff pressure for patient comfort
- Comprehensive, customizable reporting software enhances data analysis and clearly indicates patient's dipper status
- Trending tool for long-term evaluation and medication management

- #ABPM-6100S ABPM 6100 Monitor and Software





## Electrocardiographs

Our multichannel electrocardiographs (ECGs) are flexible enough to work in almost any office setting. The cost-effective Welch Allyn CP 100 and full-featured Welch Allyn CP 200 are reliable, easy-to-use devices that make taking an ECG more efficient for you and your staff. And with intuitive designs and advanced software features, you can manage and quickly generate patient data as you need it.

### Welch Allyn CP 100 and CP 200 common features:

- Full alphanumeric keyboard and LCD display for fast and easy entry of patient information
- Advanced filters for optimal ECG trace quality ensure accurate readings
- Customizable report formats allow you to print information the way you need
- Lithium battery technology lets you take the device to the patient

### CP 100™ ECG

A reliable, easy-to-use, and cost-effective ECG device designed for almost any office setting.

- A noninterpretive 12-lead resting ECG that provides accurate measurements
- Optional MEANS ECG interpretation software helps you interpret results
- High-resolution thermal printer generates standard full-sized reports and multiple printouts in the channel configuration you need
- Lead quality graphic saves valuable time and ensures accurate data capture by highlighting poor connections

#CP1-1E1 CP 100 Noninterpretive  
#CP1A-1E1 CP 100 Interpretive



#CP1A-1E1



#CP2AS-1E1

### CP 200™ ECG with Optional Spirometry

An easy-to-use, full-featured device with advanced options to help streamline workflow in your office.

Same features as the CP 100 plus:

- Large color LCD screen allows you to preview critical information
- Save time by using dedicated function or “soft keys” to perform the most common functions without scrolling through menus
- Store up to 50 ECGs and 50 spirometry tests for later review and editing of patient data and interpretation
- Connect directly and easily to the Welch Allyn CardioPerfect® Workstation Software through hardwire cable interface
- Optional spirometry testing and optional MEANS interpretation software

#CP2-1E1 CP 200 Noninterpretive  
#CP2A-1E1 CP 200 Interpretive  
#CP2S-1E1 CP 200 Noninterpretive with Spirometry  
#CP2AS-1E1 CP 200 Interpretive with Spirometry

### ECG Carts

- A must if you intend to move your device around the office
- Optional cable arm and shelf

#401393 CP 100 & CP 200 Cart  
#401161 Cable Arm and Shelf

#401393 with #401161 (device not included)



#401393 with #105065 (monitor not included)



#4800-60 (monitor not included)

#63XXXX-B CVSM 6300 Blood Pressure (only)  
#63XTXX-B CVSM 6300 Blood Pressure, Temperature (SureTemp Plus)  
#63XXE-B CVSM 6300 Blood Pressure, Temperature (Braun ThermoScan PRO 4000)  
#63MXX-B CVSM 6300 Blood Pressure, SpO<sub>2</sub> (Masimo)  
#63MTXX-B CVSM 6300 Blood Pressure, SpO<sub>2</sub> (Masimo), Temperature (SureTemp Plus)

## Connex® Vital Signs Monitor 6000 Series

Working directly with clinicians, we’ve designed a simple yet revolutionary device that can improve your workflow, reduce transcription errors, and give you back valuable time to focus on patient interaction and care. Automated, “all-in-one” electronic capture of vitals data can be stored in the device or sent directly to your EMR.

- Full color, touch screen monitor
- Unique, customizable blood pressure averaging program
- Home screen groups functions needed for meeting current Meaningful Use requirements and hypertension management
- SureBP® technology measures BP in 15 seconds, pulse rate and MAP included
- Supports adult, pediatric and neonatal NIBP
- SureTemp Plus oral, pediatric or adult axillary, and rectal thermometry and/or Braun ear thermometry
- Masimo or Nellcor SpO<sub>2</sub>
- Spot check of NIBP, pulse rate, temperature and SpO<sub>2</sub> in approximately 30 seconds
- Ability to manually enter patient height, weight, pain and respiration rate, calculates BMI
- Connectivity to a broad range of Health o meter and DECTECO® electronic scales
- 9-Cell lithium battery for 8 hours of on-time performance
- Available in mobile, wall-mounted, or desktop workflow options

#63MXXE-B CVSM 6300 Blood Pressure, SpO<sub>2</sub> (Masimo), Temperature (Braun ThermoScan PRO 4000)  
#63NXX-B CVSM 6300 Blood Pressure, SpO<sub>2</sub> (Nellcor)  
#63NTXX-B CVSM 6300 Blood Pressure, SpO<sub>2</sub> (Nellcor), Temperature (SureTemp Plus)  
#63NXXE-B CVSM 6300 Blood Pressure, SpO<sub>2</sub> (Nellcor), Temperature (Braun ThermoScan PRO 4000)  
#4800-60 Connex Accessory Cable Management Stand

### Spot Vital Signs® LXi Device

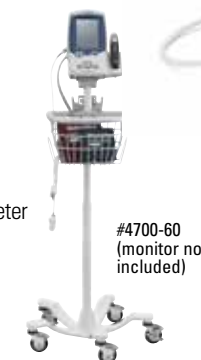
A faster electronic spot check device with enhanced parameters and greater connectivity capability.

- SureBP™ measures blood pressure in 15 seconds—resulting in time savings for you and improved comfort for your patients. Pulse rate and MAP included
- Choice of SureTemp® Plus or Braun ThermoScan® PRO 4000 ear thermometer
- Optional Masimo® and Nellcor® SpO<sub>2</sub>
- Ability to enter weight, height, respiration rate, and pain level; calculates Body Mass Index
- Connects to select Health o meter® or Tanita® digital scales
- 50-reading memory allows retrieval of previous data for review or download
- EHR connectivity-ready
- Bigger, brighter LCD display provides greater visibility from farther distances

#450T0-E1 Spot LXi with SureBP and SureTemp Plus Thermometer  
#450E0-E1 Spot LXi with SureBP and Braun ThermoScan® PRO 4000 Thermometer  
#45MT0-E1 Spot LXi with SureBP, Masimo SpO<sub>2</sub> and SureTemp Plus Thermometer  
#45ME0-E1 Spot LXi with SureBP, Masimo SpO<sub>2</sub> and Braun ThermoScan® PRO 4000 Thermometer  
#4700-60 Mobile Stand with Basket  
#4701-62 Wall Mount with Basket  
#4800-60 Accessory Cable Management Stand  
#4500-925 Cable for wired connectivity



#45MT0-E1



#4700-60 (monitor not included)

## Connex® ProBP™ 3400 Digital Blood Pressure Device

Accurate, reliable, connected blood pressure readings in the palm of your hand.

- SureBP® technology enables accurate blood pressure readings in about 15 seconds improving efficiency and patient comfort
- Obtains accurate readings and minimizes errors, even in the presence of a weak pulse
- USB-wired technology enables connectivity to EHR systems
- Handheld, wall mount and mobile stand configurations
- Lithium ion battery technology delivers up to 100 readings on a single charge with rapid recharge time

### Handheld

- #34XFHT-B Connex ProBP 3400 with SureBP
- #34XXHT-B Connex ProBP 3400 with Standard BP

### Wall Mount

- #34XFWT-B Connex ProBP 3400 with SureBP
- #34XXWT-B Connex ProBP 3400 with Standard BP

### Mobile Stand

- #34XFST-B Connex ProBP 3400 with SureBP
- #34XXST-B Connex ProBP 3400 with Standard BP



## Propaq® CS Monitor

Cost-effective continuous vital signs monitor that features a bright, full-color touchscreen display, easy-to-use menu functions and is ideal for procedural sedation and recovery for Gastroenterology, Endoscopy, Pain Management, Ophthalmology, Oral/Maxillofacial and Multi-specialty clinics.

- 3- or 5-lead ECG, Masimo SET® or Nellcor® OxiMax® SpO<sub>2</sub>, NIBP with Welch Alllyn FlexiPort® technology, heart/pulse rate, respiration, temperature, capnography (sidestream and/or mainstream), invasive blood pressure (one or two channels)
- Full patient alarms including apnea alarming
- Trending on all parameters
- Programmable defaults on displayed parameters and alarm limits
- Printer

Please note that some of the features listed above are optional and should be discussed with your Welch Alllyn representative.

### THREE COMMON SYSTEMS DESIGNED FOR GENERAL MEDICINE

- #9001-001288 ECG, Respiration, Nellcor SpO<sub>2</sub>, NIBP, 2 Temperature Channels, Battery, Connectivity Port
- #9001-004720 ECG, Nellcor SpO<sub>2</sub>, NIBP, 2 Temperature Channels, Battery, Connectivity Port
- #9001-005578 ECG, Respiration, Nellcor SpO<sub>2</sub>, SS etCO<sub>2</sub>, NIBP, 2 Temperature Channels, Printer, Battery, Connectivity Port



## Spot Vital Signs® Device

Quick, easy, accurate vital signs at an affordable price.

- Fast and accurate—completes NIBP, pulse rate, temperature, and SpO<sub>2</sub> in approximately 30 seconds
- Automated, multiparameter and modular device
- Serial connectivity to EHR systems
- Set it on a countertop, mount it on a wall or wheel it on a mobile stand
- Big, bright, easy-to-read LCD screen
- Optional SureTemp® thermometry gives you the versatility to obtain oral, axillary and rectal temperatures
- Optional Masimo® or Nellcor® SpO<sub>2</sub>

- #4200B-E1 Spot with NIBP only (includes Pulse Rate and MAP)
- #420TB-E1 Spot with NIBP and SureTemp Thermometry
- #42MOB-E1 Spot with NIBP and Masimo Pulse Oximetry
- #42MTB-E1 Spot with NIBP, Masimo Pulse Oximetry and SureTemp Thermometry
- #42N0B-E1 Spot with NIBP and Nellcor Pulse Oximetry
- #42NTB-E1 Spot with NIBP, Nellcor Pulse Oximetry and SureTemp Thermometry
- #4700-60 Mobile Stand with Basket
- #4701-62 Wall Mount with Basket
- #4200-170 Connectivity Accessory Kit with PC IR Adaptor



## Propaq® LT Monitor

Weighing in at just about two pounds, and with a shock resistance that can withstand a six-foot drop, the durable Propaq LT is ideal for reliable spot-check and continuous monitoring needs during pre-op, post-op and simple procedures.

- 3- or 5-lead ECG, Masimo SET® or Nellcor® OxiMax® SpO<sub>2</sub>, NIBP with Welch Alllyn FlexiPort technology, heart/pulse, respiration
- Continuous monitoring and spot check modes
- Storage of up to 20 full-disclosure data snapshots
- Print 8.5" x 11" reports from your PC via USB
- Ability to attach PDF to an electronic medical record from your PC
- 24-hour tabular and graphical trending
- Compact design, around the size of a paperback book
- Large color display option
- Numerous mounting options to match your facility workflow

- #802LT0N-UE1 ECG, Respiration, Nellcor SpO<sub>2</sub>, NIBP, Charging Cradle with USB, Battery
- #802LT0S-UE1 ECG, Respiration, Masimo SpO<sub>2</sub>, NIBP, Charging Cradle with USB, Battery





### KleenSpec® Cordless Illumination System

- Advanced LED light source provides improved visualization of the exam area by supplying brighter, whiter light
- No cord to get in the way during procedures
- Automatically illuminates upon insertion of the illuminator; once it is removed the light goes off

- #79910 Complete KleenSpec Cordless Illuminator with Charging Station
- #79920 Cordless Illuminator with Charging Station and Auxiliary Power Cord
- #79900 Cordless Illuminator
- #59010 Disposable Sheath for Cordless Illuminator (100/box, 5 boxes/case)
- #73910 Charging Station for Cordless Illuminator
- #75910 Auxiliary Power Cord accessory for Cordless Illuminator



### 590 Series KleenSpec® Vaginal Specula

Ergonomic design to help improve patient exams. Single-use speculum eliminates the time and expense of reprocessing metal specula.

- Improves patient safety by reducing risk of cross-contamination
- A wide handle for improved maneuverability and better balance
- Light pipe design provides a homogeneous spot and eliminates glare back
- Smooth, molded acrylic that will not pinch or bind tissue for greater comfort

- #590XS KleenSpec 590 Series Disposable Vaginal Specula, extra small (case of 96)
- #59000 KleenSpec 590 Series Disposable Vaginal Specula, small (case of 96)
- #59001 KleenSpec 590 Series Disposable Vaginal Specula, medium (case of 96)
- #59004 KleenSpec 590 Series Disposable Vaginal Specula, large (case of 72)
- #58014 KleenSpec Disposable Vaginal Speculum Dispenser



### KleenSpec® Corded Illumination System

The 590 Series KleenSpec Vaginal Speculum is compatible with the corded Illumination System (#78810) and Disposable Sheath (#58010). KleenSpec 580 Series Specula with attached Sheath also available in small, medium and large sizes.



#78800 (Shown with #73410 Transformer with 5 ft cord)



### KleenSpec® Vaginal Specula with Attached Sheath

Reduces the risk of illuminator contamination.

- Preattached sheath easily pulls down over the Welch Allyn illumination system
- The deployed sheath protects the light cord from cross-contamination
- Unique, high-quality molded acrylic for patient comfort and reliability

- #58000S KleenSpec 580 Series Disposable Vaginal Specula with Sheath, Small (case of 72)
- #58001S KleenSpec 580 Series Disposable Vaginal Specula with Sheath, Medium (case of 72)
- #58004S KleenSpec 580 Series Disposable Vaginal Specula with Sheath, Large (case of 48)



### KleenSpec® Economy Series

Integrated illumination in an economical package.

- No sharp edges with this quality economy line
- Expendable illuminator can be re-sterilized up to 50 times before disposal

- #58600 KleenSpec 586 Series Disposable Vaginal Specula, Small (25 Specula in one bag/box)
- #58601 KleenSpec 586 Series Disposable Vaginal Specula, Medium (25 Specula in one bag/box)

### KleenSpec® Disposable Sigmoidoscope

The finest in design and craftsmanship for optimal clinical performance.

- #53130 Box of 25 Disposable Specula with Obturators

### KleenSpec® Disposable Anoscope System

A high-performance, disposable anoscope for a convenient, safe, and efficient examination.

- Halogen illumination and fiber optic light transmission provide true tissue color and an unobstructed view
- 45 degree bevel at distal end to facilitate instrumentation
- Convenient disposable speculum and obturator ready for instant use
- May be used with #73210 light handle (shown) or 3.5 V Welch Allyn handle

- #36103 Complete Illumination System, including fiber optic light head and light handle with cord
- #53110 Box of 25 individually wrapped disposable specula (19 mm x 10 cm) with obturators





#29400

## OAE Hearing Screener

Requiring minimal patient cooperation, the OAE (otoacoustic emissions) let you precisely and objectively screen for hearing loss in newborns, infants, toddlers, preschool, and school-age children in just seconds.

- Fast, accurate results—about 10 seconds per ear
- Objective testing—no patient response required
- Clear results that don't require caregiver interpretation—Pass/Refer result provided by instrument
- 10-test memory storage in device
- Simple printer interface for easy patient data documentation

- #29400 OAE Hearing Screener Set (includes printer)
- #29420 OAE Ear Tip Sampler Pack (newborn, infant, pediatric and adolescent)
- #29422 OAE Newborn Tree Ear Tips, 100/bag
- #29424 OAE Blue Infant Ear Tips, 100/bag
- #29426 OAE Pediatric Foam Ear Tips, 100/bag
- #29428 OAE Adolescent Foam Ear Tips, 100/bag

## MicroTym<sup>®</sup>3 Portable Tympanometric Instrument

Speed, accuracy and ease of use combine to give you the perfect instrument for your practice.

- Features 1,000 Hz quick-interpretation mode for testing infants under the age of six months
- Test in seconds—ideal for young or uncooperative patients
- Foreground and background contrast LCD screen for easy viewing
- Three optional forms of information available for 226 Hz—tympanogram, numerical and interpretive data—making it flexible for your needs
- Compare middle ear function measurements side-by-side with easy-to-use graphs (226 Hz only)
- Tests print automatically or on-demand and can produce multiple copies for parent consultation or referral (for 226 Hz only—printing not available for 1,000 Hz)

- #93650 MicroTym3 Set with Charging Stand and Printer
- #23650 MicroTym3 Handle only with two sets of Probe Tips



#93650

## AM 282<sup>™</sup> Manual Audiometer

Threshold audiometry to quantify hearing loss.

- 11 frequencies: 125 Hz to 8000 Hz
- Wide intensity range
- Compact, lightweight design
- AC line power and battery
- Calibration storage for standard earphones and optional insert phones

- #28200 AM 282 Manual Audiometer with AC Power



#28200

## AudioScope<sup>®</sup> 3 Screening Audiometer

View the tympanic membrane and ear canal while screening for hearing loss, quickly and accurately.

- Brilliant view of tympanic membrane and ear canal before and during screening
- Choice of three screening levels—20 dB HL, 25 dB HL and 40 dB HL—at 500, 1000, 2000 and 4000 Hz for all ages
- Built-in 1000 Hz pretone lets patients "practice" listening first

- #92680 AudioScope 3, Complete (AudioScope 3, Set of AudioSpec, Charging Stand, Recording Forms)



#92680



## TM 286<sup>™</sup> AutoTymp<sup>®</sup>

More data for a more complete diagnosis.

- Tympanometry
- Ipsilateral acoustic reflex testing, and manual or automated audiometry packaged in a single, user-friendly device
- Multifunction capability enables effective management of ear health

- #28600 TM 286 AutoTymp with IPSI Reflex Testing and Audiometry

## Ear Wash System

Turn the entire process of cerumen removal into a clean, quick, safe procedure, with simultaneous irrigation and suction discharge.

- Eliminates messy outflow by automatically dislodging, removing and disposing of cerumen
- Transparent tip seals tightly and directs outflow back to sink and away from you and your patient
- You control and monitor suction, water temperature and pressure
- Safe, reduces risk of typical side effects like vertigo, nausea and tympanic membrane damage

- #29350 Ear Wash System
- #29360 Ear tips for Ear Wash System (Case of four boxes, or 100 ear tips)



#29350



#14000

## SureSight<sup>®</sup> Vision Screener

Screen for common vision problems with this child-friendly vision screener that engages youngsters, puts them at ease, and requires minimal cooperation.

- Five-second, automatic test
- Lights and sounds engage child's attention
- Measures and indicates abnormal readings automatically—no provider interpretation is required
- Operates at a nonthreatening 14" (35 cm) distance
- Minimal cooperation is necessary, making it equally effective for children, disabled patients, and those with a language barrier

- #14000 SureSight Vision Screener



## Green Series™ Medical Exam Lights

Featuring white LEDs that provide a brighter, whiter light than ever before and consume less energy. Now you can see true tissue color during an exam or procedure while also reducing your current cost of ownership.

- LEDs as opposed to halogen, for a superior whiter, brighter light
- Uniform spot—no dark or hot spots—for enhanced visualization of the exam area
- No bulb replacement for cost savings and less waste
- Consumes less energy for reduced cost of ownership
- Touchless auto on/off controls to reduce the risk of cross-contamination
- Easy to clean
- 5-year limited warranty



LED VS. HALOGEN



### GS 300 General Exam Light

- Perfect combination of intense light output and cool operation, all delivered in a compact design
- Affordable price and rugged performance

- #44400 GS 300 General Exam Light with Mobile Stand
- #44410 GS 300 General Exam Light with Table/Wall Mount
- #48955 Table/Wall Mount
- #48960 Tall Mobile Stand

### GS Exam Light IV

- Keep very focused light in specific areas
- 3x the typical light output and features a highly flexible light pipe that is twice as long as conventional pipes
- Compact, unobtrusive head that ensures pinpoint accuracy and true tissue color during an exam

- #48810 GS Exam Light IV with Table/Wall Mount
- #48950 Mobile Stand for GS Exam Light IV
- #48960 Tall Mobile Stand
- #44215 Extended Wall Mount
- #52640 Disposable Sheath (25/box, 5 boxes/case)



#48810

### GS 600 Minor Procedure Light

- Ideal for minor procedures and exams
- Features 3 LEDs and a wider head specifically for demanding viewing conditions that require exceptionally good light
- Touchless dimming controls

- #44600 GS 600 Minor Procedure Light with Mobile Stand
- #44610 GS 600 Minor Procedure Light with Table/Wall Mount
- #48955 Table/Wall Mount
- #48960 Tall Mobile Stand
- #44215 Extended Wall Mount
- #52630 Disposable Sheath (50/box, 5 boxes/case)



#44600

### GS 900 Procedure Light

- Perfect for minor procedures in the ambulatory care center, outpatient facility or physician's office
- Features 6 LEDs, outstanding durability, extraordinary maneuverability and unparalleled spot quality
- Ceiling mount option maximizes floor space and direct light wherever it is needed
- Touchless intensity controls with minimal heat dissipation and high color temperature

- #44900 GS 900 Procedure Light with Mobile Stand
- #44900-C GS 900 Procedure Light with Ceiling Mount
- #44900-W GS 900 Procedure Light with Wall Mount
- #52630 Disposable Sheath (50/box, 5 boxes/case)



#44900

#44900-C



#46070R

#46070

### Green Series™ Portable Headlight

LED technology provides illumination precisely where it is needed, with cool, bright light that ensures comfort for both clinician and patient.

- Weighs just 4 ounces—one of the most comfortable and lightweight headlamps available
- Supplies bright, white, shadow-free light for true tissue color

- #46070R GS Portable Headlight with Rigid Headband and Direct Power Supply/Charger
- #46070 GS Portable Headlight with Terrycloth Headband and Direct Power Supply/Charger
- #49642 Soft Terrycloth Headbands (Box of 10)

### LumiView™ Portable Binocular Microscope

Unique 3-D optics for viewing into small cavities.

- Adapts optical properties of binocular microscope to converge user's vision into a magnified, 3-dimensional view
- Directs cool halogen light to the spot for clear 3-D image and accurate depth perception
- Simple to use, easy to carry and very affordable

- #20500H Portable Binocular Microscope, Head Mount with Portable Battery Pack
- #20500S Portable Binocular Microscope, Spectacle Mount with Portable Battery Pack



#49020

### Green Series™ Procedure Headlight

Cool, bright white light that is ideal for a variety of office-based procedures. When you need targeted, well-defined illumination without the heat of traditional headlamps, look to our Green Series Headlamps to provide superior quality and reliability.

- Weighing just six ounces, it is extremely comfortable to wear for simple and complex procedures
- Supplies bright, white, shadow-free light for truer tissue color
- Rechargeable battery pack makes this a completely portable, compact unit that allows the user freedom of movement
- Enjoy the flexibility of operating the headlight using the direct power source or the rechargeable "belt-clip" portable power source
- LED lamp's operating life expectancy is 10,000 hours with minimal light output degradation

- #49020 GS Procedure Headlight
- #75260 Battery Pack with Charger
- #49099 Carrying Case



#20500H

| Part No.   | Calibration Included | Ref. Page | Material Description                     |
|------------|----------------------|-----------|--|
| S1-3400C   | Y                    | 18        | PROBP 3400, COMP PARTNER PGM+ CAL        |
| S1-3400-2C | Y                    | 18        | PROBP 3400, COMP PARTNER PGM 2YR+ CAL    |
| S1-3400-5C | Y                    | 18        | PROBP 3400, COMP PARTNER PGM 5YR+ CAL    |
| S1-4200    |                      | 18        | SPOT, COMPREHENSIVE PARTNER PGM          |
| S1-4200-2  |                      | 18        | SPOT, COMP PARTNER PGM 2YR               |
| S1-4200C   | Y                    | 18        | SPOT, COMPREHENSIVE PARTNER PGM+ CAL     |
| S1-4200-2C | Y                    | 18        | SPOT, COMP PARTNER PGM 2YR+ CAL          |
| S1-4500    |                      | 17        | SPOT LXI, COMPREHENSIVE PARTNER PGM      |
| S1-4500-2  |                      | 17        | SPOT LXI, COMP PARTNER PGM 2YR           |
| S1-4500C   | Y                    | 17        | SPOT LXI, COMPREHENSIVE PARTNER PGM+ CAL |
| S1-4500-2C | Y                    | 17        | SPOT LXI, COMP PARTNER PGM 2YR+ CAL      |
| S1-6000    |                      | 17        | CVSM, COMPREHENSIVE PARTNER PGM          |
| S1-6000-2  |                      | 17        | CVSM, COMP PARTNER PGM 2YR               |
| S1-6000-5  |                      | 17        | CVSM, COMP PARTNER PGM 5YR               |
| S1-6000C   | Y                    | 17        | CVSM, COMPREHENSIVE PARTNER PGM+ CAL     |
| S1-6000-2C | Y                    | 17        | CVSM, COMP PARTNER PGM 2YR+ CAL          |
| S1-6000-5C | Y                    | 17        | CVSM, COMP PARTNER PGM 5YR+ CAL          |
| S1-24X     |                      | 19        | PROPAQ CS, COMPREHENSIVE PARTNER PGM     |
| S1-24X-2   |                      | 19        | PROPAQ CS, COMP PARTNER PGM 2YR          |
| S1-24XC    | Y                    | 19        | PROPAQ CS, COMP PARTNER PGM+ CAL         |
| S1-24X-2C  | Y                    | 19        | PROPAQ CS, COMP PARTNER PGM 2YR+ CAL     |
| S1-802LT   |                      | 19        | PROPAQ LT, COMPREHENSIVE PARTNER PGM     |
| S1-802LT-2 |                      | 19        | PROPAQ LT, COMP PARTNER PGM 2YR          |
| S1-CIWS    |                      | 4         | CIWS, COMPREHENSIVE PARTNER PGM          |
| S1-CIWS-2  |                      | 4         | CIWS, COMP PARTNER PGM 2YR               |
| S1-CIWS-5  |                      | 4         | CIWS, COMP PARTNER PGM 5YR               |
| S1-CIWSC   | Y                    | 4         | CIWS, COMPREHENSIVE PARTNER PGM+ CAL     |
| S1-CIWS-2C | Y                    | 4         | CIWS, COMP PARTNER PGM 2YR+ CAL          |
| S1-CIWS-5C | Y                    | 4         | CIWS, COMP PARTNER PGM 5YR+ CAL          |

| Part No.       | Calibration Included | Ref. Page | Material Description                     |
|----------------|----------------------|-----------|--|
| S1-CP100       |                      | 16        | CP100, COMPREHENSIVE PARTNER PGM         |
| S1-CP100-2     |                      | 16        | CP100, COMP PARTNER PGM 2YR              |
| S1-CP200       |                      | 16        | CP200, COMPREHENSIVE PARTNER PGM         |
| S1-CP200-2     |                      | 16        | CP200, COMP PARTNER PGM 2YR              |
| S1-CP200S      |                      | 16        | CP200 w/SPO, COMPREHENSIVE PARTNER PGM   |
| S1-CP200S-2    |                      | 16        | CP200 w/SPO, COM PARTNER PGM 2YR         |
| S1-CPWS-ABPM   |                      | 15        | CPWS ABPM, COMPREHENSIVE PARTNER PGM     |
| S1-CPWS-ABPM-2 |                      | 15        | CPWS ABPM, COMPREHENSIVE PARTNER PGM 2YR |
| S1-CPWS-BNDL   |                      | 14        | CPWS BNDL, COMPREHENSIVE PARTNER PGM     |
| S1-CPWS-BNDL-2 |                      | 14        | CPWS BNDL, COMPREHENSIVE PARTNER PGM 2YR |
| S1-CPWS-R      |                      | 14        | CPWS RESTING, COMPREHENSIVE PARTNER PGM  |
| S1-CPWS-R-2    |                      | 14        | CPWS RESTING, COMP PARTNER PGM 2YR       |
| S1-CPWS-S      |                      | 15        | CPWS STRESS, COMPREHENSIVE PARTNER PGM   |
| S1-CPWS-S-2    |                      | 15        | CPWS STRESS, COMP PARTNER PGM 2YR        |
| S1-CPWS-SPO    |                      | 14        | CPWS SPO, COMPREHENSIVE PARTNER PGM      |
| S1-CPWS-SPO-2  |                      | 14        | CPWS SPO, COMPREHENSIVE PARTNER PGM 2YR  |
| S1-M690        |                      | 9         | M690/692, COMPREHENSIVE PARTNER PGM      |
| S1-M690-2      |                      | 9         | M690/692, COMPREHENSIVE PARTNER PGM 2YR  |
| S1-4000        |                      | 9         | BRAUN 4000, COMPREHENSIVE PARTNER PGM    |
| S1-4000-2      |                      | 9         | BRAUN 4000, COMP PARTNER PGM 2YR         |
| S1-MT3         |                      | 22        | MICROTYMP 3, COMPREHENSIVE PARTNER PGM   |
| S1-MT3-2       |                      | 22        | MICROTYMP 3, COMP PARTNER PGM 2YR        |
| S1-MT3C        | Y                    | 22        | MICROTYMP 3, COMP PARTNER PGM+ CAL       |
| S1-MT3-2C      | Y                    | 22        | MICROTYMP 3, COMP PARTNER PGM 2YR+ CAL   |
| S1-OAE-294X    |                      | 22        | OAE-294X, COMPREHENSIVE PARTNER PGM      |
| S1-OAE-294X-2  |                      | 22        | OAE-294X, COMPREHENSIVE PARTNER PGM 2YR  |
| S1-14000       |                      | 23        | SURESIGHT VS, COMPREHENSIVE PARTNER PGM  |
| S1-14000-2     |                      | 23        | SURESIGHT VS, COMP PARTNER PGM 2YR       |
| S1-14000C      | Y                    | 23        | SURESIGHT VS, COMP PARTNER PGM+ CAL      |
| S1-14000-2C    | Y                    | 23        | SURESIGHT VS, COMP PARTNER PGM 2YR+ CAL  |

## Relevant CPT<sup>†</sup> Codes for General Medicine Products

### ABPM—PAGE 15

|       |  |
|-------|--|
| 93784 | Ambulatory blood pressure monitoring, utilizing a system such as magnetic tape and/or computer disk, for 24 hours or longer; including recording, scanning analysis, interpretation and report |
| 93786 | Ambulatory blood pressure monitoring, utilizing a system such as magnetic tape and/or computer disk, for 24 hours or longer; recording only  |
| 93788 | Ambulatory blood pressure monitoring, utilizing a system such as magnetic tape and/or computer disk, for 24 hours or longer; scanning analysis with report                                     |
| 93790 | Ambulatory blood pressure monitoring, utilizing a system such as magnetic tape and/or computer disk, for 24 hours or longer; physician review with interpretation and report                   |

### AM 282<sup>TM</sup> MANUAL AUDIOMETER—PAGE 22

|       |  |
|-------|--|
| 92552 | Pure tone audiometry (threshold); air only |
|-------|--|

### EAR WASH SYSTEM—PAGE 23

|       |  |
|-------|--|
| 69210 | Removal of impacted cerumen (separate procedure), one or both ears   |
| 60268 | Removal of impacted cerumen (one or both ears) by physician on same date of service as audiologic function testing |

### EXERCISE TESTING—PAGE 15

|       |   |
|-------|---|
| 93015 | Cardiovascular stress test using maximal or submaximal treadmill or bicycle exercise, continuous electrocardiographic monitoring, and/or pharmacological stress; with physician supervision, with interpretation and report |
| 93016 | Physician supervision only, without interpretation and report   |
| 93017 | Tracing only, without interpretation and report   |
| 93018 | Interpretation and report only  |

### HOLTER SYSTEM—PAGE 15

|       |   |
|-------|---|
| 93224 | External electrocardiographic recording up to 48 hours by continuous rhythm recording and storage; includes recording, scanning analysis with report, physician review and interpretation |
| 93225 | External electrocardiographic recording up to 48 hours by continuous rhythm recording and storage; recording (includes connection, recording, and disconnection)                          |
| 93226 | External electrocardiographic recording up to 48 hours by continuous rhythm recording and storage; scanning analysis with report  |
| 93227 | External electrocardiographic recording up to 48 hours by continuous rhythm recording and storage; physician review and interpretation  |

### MICROTYMP<sup>®</sup> 3—PAGE 22

|       |  |
|-------|--|
| 92567 | Tympanometry (impedance testing)               |
| 92568 | Acoustic reflex testing, threshold             |
| 92550 | Tympanometry and reflex threshold measurements |

### OAE HEARING SCREENER—PAGE 22

|       |  |
|-------|--|
| 92587 | Evoked otoacoustic emissions limited (single stimulus level) either transient or distortion products |
|-------|--|

### PULSE OXIMETRY (SPOT VITAL SIGNS<sup>®</sup> LXI, SPOT VITAL SIGNS<sup>®</sup> CONNEX<sup>®</sup> VSM, PROPAQ LT, PROPAQ CS)—PAGES 17-19

|   |  |
|---|--|
| Used for monitoring during minor procedures, treatment, and minor surgery |  |
| 94760   | Noninvasive ear or pulse oximetry for oxygen saturation; single determination                                    |
| 94761   | Multiple determinations (e.g., during exercise)  |
| 94762   | Noninvasive ear or pulse oximetry for oxygen saturation; by continuous overnight monitoring (separate procedure) |

### RESTING ECG—PAGE 14

|       |   |
|-------|---|
| 93000 | Electrocardiogram, routine ECG with at least 12 leads; with interpretation and report |
| 93005 | Tracing only, without interpretation and report                                       |
| 93010 | Interpretation and report only  |

### SPIROMETRY PRODUCTS—PAGE 14

|       |   |
|-------|---|
| 94010 | Spirometry, including graphic record, total and timed vital capacity, expiratory flow rate measurement(s), with or without maximal voluntary ventilation  |
| 94060 | Bronchospasm evaluation: spirometry as in 94010, before and after bronchodilator (aerosol or parenteral) (For prolonged exercise test for bronchospasm with pre- and post-spirometry, use 94620.) |
| 94070 | Bronchospasm provocation evaluation, multiple spirometric determinations as in 94010, with administered agents (eg., antigen(s), cold air, methacholine)  |
| 94150 | Vital capacity, total (separate procedure)  |
| 94200 | Maximum breathing capacity, maximal voluntary ventilation   |
| 94375 | Respiratory flow volume loop  |

### SURESIGHT<sup>®</sup> VISION SCREENER—PAGE 23

|       |   |
|-------|---|
| 92015 | Screening test of visual acuity, quantitative, bilateral (test must employ graduated visual acuity stimuli that allow a quantitative estimate of visual acuity (e.g., Snellen chart)) |
|-------|---|

### TM 286<sup>TM</sup> AUTOTYMP<sup>®</sup>—PAGE 23

|       |                         |
|-------|-------------------------|
| 92568 | Acoustic reflex testing |
|-------|-------------------------|

### A Word about the Coding Information Contained in This Catalog

This information is for reference only. Information does not constitute a guarantee of coverage or payment. Be sure to confirm the requirements and specific coding, coverage, medical necessity, and reimbursement guidelines of the payer you are billing before submitting claims by reviewing your managed care contracts, consulting the Physicians' Current Procedural Terminology, The Federal Register, or contacting provider services. The information contained in this document is provided for convenience only and represents no statement, promise, or guarantee by Welch Allyn concerning coverage or levels of reimbursement. Payment will vary by geographic locality. It is always the provider's responsibility to determine coding, coverage and claim information for the services that were provided. Centers for Medicare & Medicaid Services (CMS) Medicare Program: Medicare Physician Fee Schedule for CY 2012, <http://cms.gov/PhysicianFeeSched/>. Please note: Medicare fee schedule corrections and changes occur periodically. CPT copyright 2011 American Medical Association. All rights reserved. CPT is a registered trademark of the American Medical Association. Applicable FARS/DFARS Restrictions Apply to Government Use. Fee schedules, relative value units, conversion factors and/or related components are not assigned by the AMA, are not part of CPT, and the AMA is not recommending their use. The AMA does not directly or indirectly practice medicine or dispense medical services. The AMA assumes no liability for data contained or not contained herein.

<sup>†</sup>CPT copyright 2011 American Medical Association. All rights reserved. CPT is a registered trademark of the American Medical Association. Applicable FARS/DFARS restrictions apply to government use.

# General Medicine Consumables

“I can always tell if somebody tries to switch from Welch Allyn consumables to the cheap substitutes. They don’t fit the instruments right, and I worry about the accuracy.”

— BARBARA J. CONNOR, MD  
AUBURN, NY

WELCH ALLYN CONSUMABLE PRODUCTS are designed to maximize the performance of Welch Allyn instruments, and are manufactured to meet rigid conformance requirements.

| Product Name     | Part No.    | Ref. Page | Product Affiliation  |
|------------------|-------------|-----------|--|
| Thermometry      | #05031-101  | 9, 17, 18 | Disposable Thermometer Probe Covers for SureTemp® 678, 679, 690, 692 and 986 Models; Spot Vital Signs® LXi; Spot Vital Signs® (1,000 each) |
|                  | #05075-800  | 9         | Disposable Thermometer Probe Covers for Braun ThermoScan® PRO 4000 (800 each)  |
| Paper            | #52600      | 23        | TM 286™ AutoTyp™ Printer Paper (1 pack of 5 rolls)   |
|                  | #56100      | 22        | MicroTyp™3 Printer Paper (5 rolls)   |
|                  | #94016-0000 | 16        | Paper for CP 100™ and CP 200™ 8.25" x 11" (1,000 sheets)   |
|                  | #65184      | N/A       | Video Colposcope Sony® UPC-215 Print Pad (3 sets of 80 pads with ink ribbon)   |
| Electrodes       | #45003-0000 | 16        | Exercise ECG Electrodes (case of 500)  |
| Batteries        | #72200      | 8         | Replacement NiCad Rechargeable Battery (black) for Desk/Well Charger Handle  |
|                  | #71960      | 8         | Replacement Battery for Lithium Ion Handle   |
|                  | #72300      | 8         | Replacement NiCad Battery (orange) for #71000-A and #71000-C Rechargeable Handles  |
| Lamps            | #04900-U    | 6         | Ophthalmoscopes #11720, 11730, 11735   |
|                  | #04900-LED  | 6         | Ophthalmoscopes #11720, 11730, 11735   |
|                  | #03800-U    | 6         | PanOptic™ Ophthalmoscopes #11810, 11820  |
|                  | #03800-LED  | 6         | PanOptic™ Ophthalmoscopes #11810, 11820  |
|                  | #06500-U    | 7         | MacroView™ Otoscopes #23810, 23820   |
|                  | #06500-LED  | 7         | MacroView™ Otoscopes #23810, 23820, 23920  |
|                  | #03100-U    | 7         | Otoscopes #20000, 20200, #21700, 3.5 V Handle Adapter #73500   |
|                  | #03100-LED  | 7         | Otoscopes #20000, 20200, #21700, 3.5 V Handle Adapter #73500   |
|                  | #08800-U    | 20        | 4.6 V Halogen Lamp for Vaginal Specula Illumination System #78810  |
|                  | #09800-U    | N/A       | Solarc® Lamp for Video Colposcope  |
| Otoscope Specula | #52133      | 7         | 521 Series, Pneumatic, Disposable KleenSpec®, 3 mm (500/bag, 10 bags/case)   |
|                  | #52134      | 7         | 521 Series, Pneumatic, Disposable KleenSpec®, 4 mm (500/bag, 10 bags/case)   |
|                  | #52135      | 7         | 521 Series, Pneumatic, Disposable KleenSpec®, 5 mm (500/bag, 10 bags/case)   |
|                  | #52432-U    | 7         | 524 Series, MacroView, Disposable KleenSpec®, 2.75 mm (850/bag, 10 bags/case)  |
|                  | #52434-U    | 7         | 524 Series, MacroView, Disposable KleenSpec®, 4.25 mm (850/bag, 10 bags/case)  |
|                  | #52700      | 7         | Slotted Tip for #23810 and #23820 MacroView Otoscope (48/box, 4 boxes/case)  |
|                  | #24320      | 7         | MacroView™ Disposable SofSeal™ Sealing Accessory for Otoscope, Small, for 2 to 4.25 mm (80/box, 6 boxes/case)                              |
|                  | #24330      | 7         | MacroView™ Disposable SofSeal™ Sealing Accessory for Otoscope, Medium, for 3 mm, 4 mm, 5 mm (80/box, 6 boxes/case)                         |

Local Rep: \_\_\_\_\_

Phone Number: \_\_\_\_\_

4341 State Street Road, P.O. Box 220, Skaneateles Falls, NY 13153-0220 USA  
(p) 800.535.6663 (f) 315.685.3361 www.welchallyn.com

