



Humanities

Geography GCSE

Head of department: Miss Alcock





Geography GCSE

Course Content information

- Exam board: AQA 8035
- Assessed by 3 exam papers at the end of year 11
- All exams set on different dates in the summer





What to expect on this course?

Paper 1 – Challenges in the physical environment

Section A ‘The challenge of natural hazards’

- Tectonic hazards
- Weather hazards
- Climate change

Section B ‘The Living World’

- Ecosystems
- Tropical Rainforests
- Hot Deserts

Section C ‘Physical landscapes in the UK’

- UK Coastal landscapes
- UK River landscapes

Paper 2 – Challenges in the human environment

Section A ‘Urban Issues and Challenges’

- Mumbai – Opportunities, Challenges, and planning
- Birmingham – Opportunities, challenges and urban planning
- Sustainability

Section B ‘Changing Economic World’

- How we measure development
- Causes of uneven development
- Nigeria
- The UK: economy and place in the world

Section C ‘The Challenge of Resource Management’

- Food, energy, and water in the UK
- Global energy management

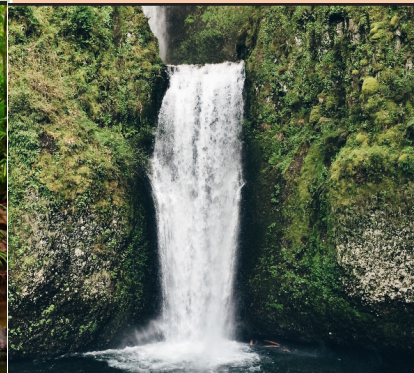
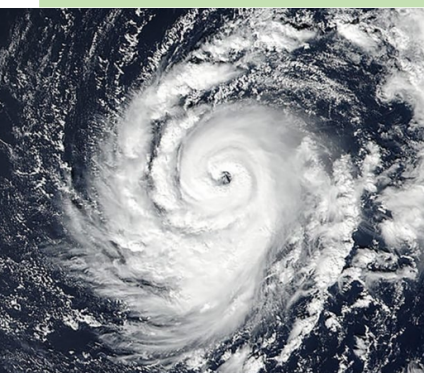
Paper 3 – Geographical applications

Issue Evaluation

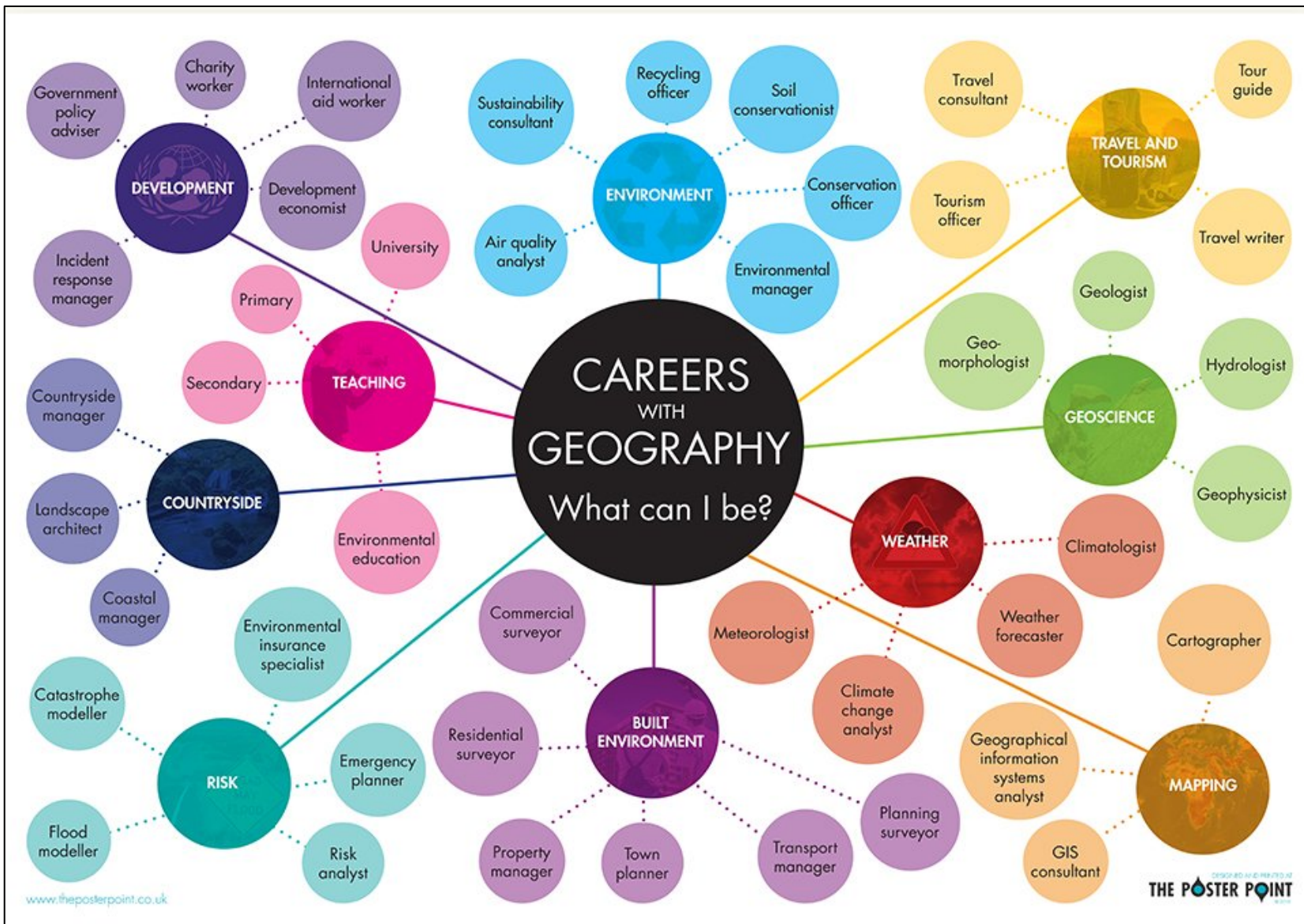
- Students provided with a resource booklet 12 weeks before their exam based on a current geographical issue.

Fieldwork

- Students must undertake 2 fieldwork opportunities during the course
- Physical fieldwork (rivers) and human (city) fieldwork
- They will collect, record, process and present the data
- Analysing, reaching conclusions, evaluating enquiries



Why choose Geography?



- Geography is about the future and encourages flexible thinking
- Get to know the human and physical world through fieldwork
- It fosters transferable skills which all employers look for
- Make wise decisions that balance the environment, economic, and social concerns in the context of sustainable development





Course title

Further information

- For more information about the AQA GCSE Geography course please look at the below sources

<https://www.aqa.org.uk/subjects/geography/gcse/geography-8035>

<https://www.bbc.co.uk/bitesize/examspecs/zy3ptyc>

Teachers of the GCSE Geography course include: Miss Alcock, Mrs Tillotson, Mrs Dunn, Miss Truman, and Mr Marshall

If you have any questions please e-mail myself at aalcock@oldburyacademy.org.uk





National Careers Service

This link will take you to a government website that is designed to help you explore careers.

<https://nationalcareers.service.gov.uk/>

Have a look at careers you are interested and what advice they give you about possible GCSEs and A-levels you should be interested in.

