

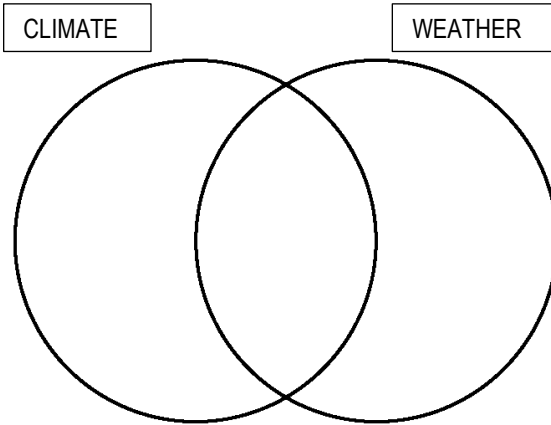
**Georgia Studies CRCT Study Guide**

Name: \_\_\_\_\_

DUE: \_\_\_\_\_

*\*You may use all the resources available including my website, your notes, text, & CRCT prep book to complete for possible extra credit toward your GA Studies grade!*

**Standard SS8G1**



1. In the Venn diagram, explain the difference between climate and weather.

2. What word could best be used to describe Georgia's climate? \_\_\_\_\_

3. How does Georgia's climate affect its economy? \_\_\_\_\_

Fill in the missing information in the table below for # 4-8.

Region -	Distinguishing feature -	Important to know -
	Largest region	
	Smallest Region	
	Most populated region	
	Receives the most precipitation	
	TAG corner in this region	

**Standard SS8H1**

Use the table below to fill in information about the pre-historic Native American Indian tribes for # 9-12.

	Time Period	Settlement	Food Sources	Tools
PALEO				
ARCHAIC				
WOODLAND				
MISSISSIPPIAN				

13. What Spanish explorer was the first to travel into Georgia in 1540? \_\_\_\_\_

14. What were his motivations? \_\_\_\_\_

15. What was the purpose for establishing missions in the barrier islands?

\_\_\_\_\_

**Standard SS8H2**

Match the correct term to the statement.

- 16. \_\_\_\_ Widely recognized as the man responsible for the establishment of the GA colony.
- 17. \_\_\_\_ Group of men who worked together to establish the colony.
- 18. \_\_\_\_ Colonists who became dissatisfied with life in GA & its rules.
- 19. \_\_\_\_ Group of settlers recruited by Oglethorpe to settle town of Darien.
- 20. \_\_\_\_ Settlers who established the towns of Ebenezer & New Ebenezer.
- 21. \_\_\_\_ Group of settlers who brought a needed doctor to the colony.
- 22. \_\_\_\_ Yamacraw chief who welcomed colonists & granted them land.
- 23. \_\_\_\_ Served as an interpreter for Oglethorpe & Native Americans.
- 24. \_\_\_\_ Person who granted charter to Oglethorpe & Trustees.
- 25. \_\_\_\_ One of the groups Oglethorpe & Trustees hoped would settle in the new colony.

- A. Trustees
- B. Salzburgers
- C. Jews
- D. James Oglethorpe
- E. Mary Musgrove
- F. King George II
- G. Debtors
- H. Malcontents
- I. Tomochici
- J. Highland Scots

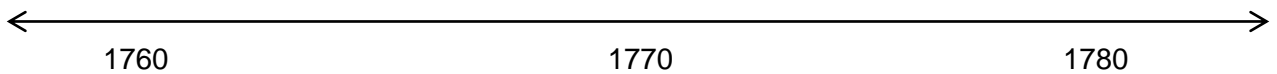
Give evidence of support for the 3 reasons for the settlement of Georgia for #26-28.

ECONOMY	DEFENSE	CHARITY

**Standard SS8H3**

Rank the events in chronological order on the timeline for # 29-34.

*Declaration of Independence, Increased Taxes, French & Indian War, Intolerable Acts, Proclamation of 1763, and Boston Tea Party.*



35. The three delegates to sign the Declaration of Independence from Georgia were:

\_\_\_\_\_

**Standard SS8H4**

Read the statement. If it applies to the *Articles of Confederation*, write A. If it applies to the *Constitution*, write C.

- 36. \_\_\_\_ Written at the Second Continental Congress in 1787.
- 37. \_\_\_\_ Outlined 3 branches of the National Government.
- 38. \_\_\_\_ No power to tax.
- 39. \_\_\_\_ Bill of Rights was added before ratification.
- 40. \_\_\_\_ Required unanimous votes.
- 41. \_\_\_\_ Identified an executive branch to enforce the laws.
- 42. \_\_\_\_ Considered to be weak.

43. The delegates from Georgia to sign the Constitution were:

\_\_\_\_\_

Standard SS8H5

Complete the chart to compare & contrast the systems of land distribution for #44-45.

	HEADRIGHT SYSTEM	LAND LOTTERY
When did it begin?		
Who was eligible?		
How much land could they get?		

46. What system gave land away in an illegal manner? \_\_\_\_\_

Fill in the blank.

47. Chief \_\_\_\_\_ was killed by his own people for giving away their lands without their approval.

48. The Cherokee published their own newspaper known as the \_\_\_\_\_, printed in English and Cherokee.

49. The Supreme Court ruled that Cherokee land was not subject to Georgia law in the \_\_\_\_\_ case.

50. In 1865 the United States passed the \_\_\_\_\_ Act.

51. One event that led to the desire to remove the Native Americans from Georgia was the discovery of \_\_\_\_\_ in \_\_\_\_\_.

52. \_\_\_\_\_ was the Cherokee credited with creating a written language for his people, which was known as a \_\_\_\_\_.

53. \_\_\_\_\_ was president during the period of Indian removal.

54. The forced removal of Native Americans from Georgia to land west of the Mississippi was known as the \_\_\_\_\_.

55. Name the first land grant university in Georgia: \_\_\_\_\_

56. What two religions dominated the South following the Revolutionary War?

\_\_\_\_\_

Standard SS8H6

57. The period before the Civil War is known as the \_\_\_\_\_ era.

58. In this era the Southern economy was based on \_\_\_\_\_ and the Northern economy on \_\_\_\_\_.

59. Define *nullification*: \_\_\_\_\_

Fill in the missing information in the table for #60-65.

EVENT	DATE	INFORMATION
Missouri Compromise		Maintained balance between free & slave state by admitting _____ & _____ to the Union & drawing a 36°30' line which _____.
Compromise of 1850	1850	Passed the _____. Forbid the sale of slaves in _____. Admitted _____ as a free state. _____ & _____ could vote for free/slave.
	1854	Allowed states to vote for slave or free state through popular _____.
Dred Scott Case	1857	
Election of Abraham Lincoln		Led to the _____ of SC & _____ other states.
	1861	Started the Civil War

Compare the key battles in the table below for #66-68.

	ANTIETAM	GETTYSBURG	CHICKAMAUGA
WHEN			
WHAT STATE			
WHO WON			
COMMANDERS			
IMPORTANCE			

69. The Emancipation Proclamation followed the Union victory at \_\_\_\_\_.

70. Signed by Lincoln on January 1, \_\_\_\_\_ the proclamation granted \_\_\_\_\_ to slaves in the \_\_\_\_\_ States of America.

Fill in the table below for #71-73.

	PURPOSE	WHEN RATIFIED
13TH AMENDMENT		
14TH AMENDEMENT		
15TH AMENDMENT		

74. Define *sharecropping*: \_\_\_\_\_

75. Define *tenant farming*: \_\_\_\_\_

Reconstruction According to.....	
76. Lincoln wanted	
77. Congress (Radical Republicans) wanted -	
78. Johnson wanted -	

Standard SS8H7

Match the statement to the appropriate individual or term.

- 79. \_\_\_\_ Head of the Populist Party.
- 80. \_\_\_\_ Political party holding beliefs similar to the Farmers' Alliance.
- 81. \_\_\_\_ Joseph Brown, Alfred Colquitt, & John B. Gordon
- 82. \_\_\_\_ Editor of the Atlanta Constitution credited with coining the term "New South."
- 83. & 84. \_\_\_\_ & \_\_\_\_ Two organizations formed by poor farmers aimed at increasing their political influence.
- 85. \_\_\_\_ Held in Atlanta in 1895 to promote the "New South."
- 86. \_\_\_\_ One of the reform measures of the Farmers' Alliance & the Grange, giving free mail delivery to those in rural areas.

- A. Farmers' Alliance
- B. Henry Grady
- C. Tom Watson
- D. Bourbon
- Triumvirate
- E. Grange
- F. Populist
- G. Rural Free Delivery
- H. International Cotton Exposition

Fill in the information for #87-90.

	PLESSY V. FERGUSON	LEO FRANK CASE	JIM CROW LAWS	ATLANTA RIOT
WHO				
WHEN				
WHAT				

What are these individual best known for?

91. Henry McNeal Turner \_\_\_\_\_  
92. Booker T. Washington \_\_\_\_\_  
93. W.E.B Duboise \_\_\_\_\_  
94. Alonzo Herndon \_\_\_\_\_  
95. John & Lugenia Burns Hope \_\_\_\_\_

**Standard SS8H8**

True or False?

96. \_\_\_\_\_ Just after WWI, cotton prices increased & Farmers in GA did quite well.  
97. \_\_\_\_\_ Around 1915, Georgia Farmers battled an insect the cotton weevil that did great damage to their crops.  
98. \_\_\_\_\_ Georgia suffered from drought conditions from 1925 to 1927.  
99. \_\_\_\_\_ Overproduction occurs when industries make more goods than they can sell.  
100. \_\_\_\_\_ The Great depression was caused by the Stock Market Crash of 1929.  
101. \_\_\_\_\_ Tariffs established by the United States helped solve the Great Depression.

Identify the programs for #102-106.

PROGRAM	STOOD FOR	PURPOSE
CCC		
FDIC		
AAA		
SSA		
REA		

**Standard SS8H9**

107. Define *lend-lease* program: \_\_\_\_\_  
108. Define *Holocaust*: \_\_\_\_\_  
109. Who is Richard Russell? \_\_\_\_\_  
110. Who is Carl Vinson? \_\_\_\_\_  
111. The attack on Pearl Harbor by the Empire of Japan occurred on December \_\_\_\_, \_\_\_\_.

Standard SS8H10

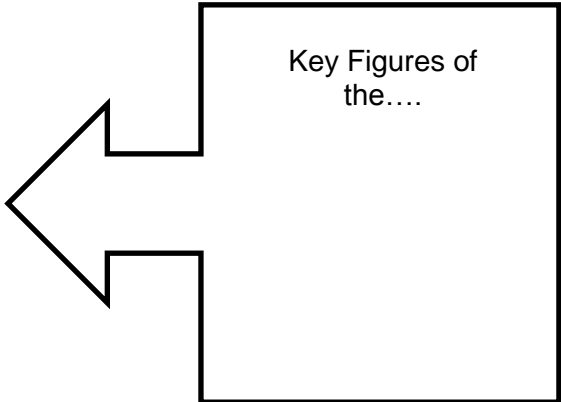
For #112-115 explain how the following contributed to Georgia's growth.

WILLIAM B. HARTSFIELD	IVAN ALLEN JR.	ELLIS ARNALL	MAJOR LEAGUE SPORTS

Standard SS8H11

For # 116-119 identify the action/role that each is person is associated with and name the single movement united them all.

- 116. Charlayne Hunter & Hamilton Holmes  
\_\_\_\_\_
- 117. Benjamin Mays  
\_\_\_\_\_
- 118. Dr. Martin Luther King Jr.  
\_\_\_\_\_
- 119. Maynard Jackson  
\_\_\_\_\_



Match the event to its description.

- 120. \_\_\_\_\_ President Eisenhower used federal troops for this action.
- 121. \_\_\_\_\_ This U.S. Supreme Court decision overturned *Plessy v. Ferguson*.
- 122. \_\_\_\_\_ This group recommended that school segregation in Georgia be left to the local school districts.
- 123. \_\_\_\_\_ This was a move by the legislature, approved by the voters in 1953.
- 124. \_\_\_\_\_ Georgia citizens had no vote in this legislative response to the *Brown v. Board of Education* ruling.
- 125. \_\_\_\_\_ A U.S. court order led to this action in school integration.
- 126. \_\_\_\_\_ The U.S. Supreme Court decision declared "separate but equal" to be constitutionally unacceptable.

- A. 1956 Flag Controversy
- B. Brown v Board of Education
- C. Sibley Commission
- D. Integration of the University of GA
- E. Integration of Little Rock Central HS
- F. Plessy v. Ferguson
- G. GA constitutional amendment to prevent school integration

Standard SS8H12

127. Define *county-unit system*: \_\_\_\_\_

128. Define *reapportionment*: \_\_\_\_\_

129. Around what time did these two systems end? \_\_\_\_\_

130. Circle the government roles served by Jimmy Carter:

Mayor Governor Senator President

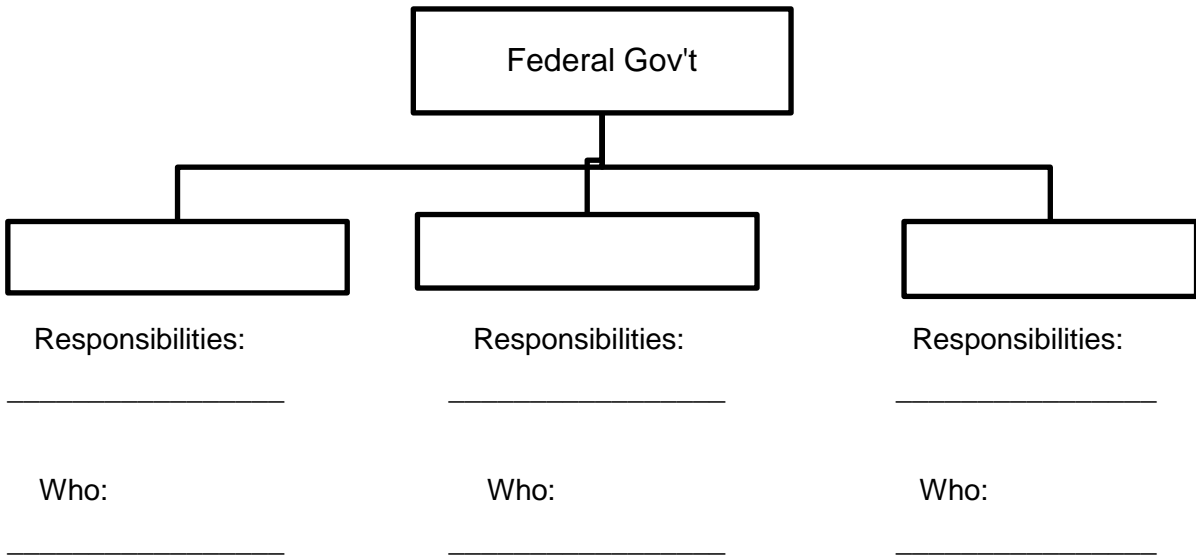
131. What are the two dominating political parties in Georgia? \_\_\_\_\_ and \_\_\_\_\_

Standard SS8CG 1-4

#132-135 - Rank the following documents in the order of which they were written & give the year:

\_\_\_\_\_ Georgia Constitution (\_\_\_\_\_) \_\_\_\_\_ US Constitution (\_\_\_\_\_)  
\_\_\_\_\_ Articles of Confederation (\_\_\_\_\_) \_\_\_\_\_ Declaration of Independence (\_\_\_\_\_)

Fill in the information missing from the graphic organizer below for #136-144



145. What is the highest government position at the *state* level? \_\_\_\_\_

146. Second highest? \_\_\_\_\_

True or False?

147. \_\_\_\_\_ The official name for the Georgia legislature is the General Assembly.

148. \_\_\_\_\_ House members in Georgia serve 2-year terms & state senators 4-years.

149. \_\_\_\_\_ A person must be at least 25 years old to serve in the House or Senate.

150. \_\_\_\_\_ A candidate for state legislature must be a US citizen.

151. \_\_\_\_\_ The state legislature meets 100 days each year.



#152-157. Rank the following in the correct order to show how a bill becomes a law.

\_\_\_\_\_ Both houses approve the same version of the bill.

\_\_\_\_\_ Committee approves the bill & sends it to the floor for a vote.

\_\_\_\_\_ Bill goes to the Governor for action.

\_\_\_\_\_ Bill is assigned to a committee for hearings.

\_\_\_\_\_ Bill is submitted, formatted, & given a number.

\_\_\_\_\_ After approval by first house, bill is sent to other house for committee & floor vote.

**Standard SS8CG5**

Fill in the blank with key government terms from the word bank.

158. An individual who files a law suit is known as a \_\_\_\_\_.

159. A \_\_\_\_\_ is a very serious crime.

160. A minor crime, such as shoplifting, is known as a \_\_\_\_\_.

161. If a crime is committed, it will be dealt with in a \_\_\_\_\_ court.

162. In cases where no crime is committed, such as a divorce, a \_\_\_\_\_ court will hear the case.

163. In a trial, the person charged with a crime is the \_\_\_\_\_.

- |             |
|-------------|
| Civil       |
| Criminal    |
| Plaintiff   |
| Defendant   |
| Felony      |
| Misdemeanor |

**Standard SS8CG6**

#163-171 - Read each scenario & determine if it indicates the status of a **JD** = Juvenile Delinquent, **UC** = Unruly Child, or **DC** = Deprived Child.

_____ Individual runs away from home.	_____ Child is routinely left home alone.	_____ Person is caught selling marijuana.
_____ Child is malnourished.	_____ Individual uses a gun in an armed robbery.	_____ Child disobeys reasonable commands of parents.
_____ Individual is caught shoplifting.	_____ Individual attends party where alcohol is served without a parent.	_____ Child shows indications of physical abuse.

172. Why is there a separate court for juveniles? \_\_\_\_\_  
\_\_\_\_\_

173. Juveniles are \_\_\_\_\_ years old or under.

174. Explain the difference between a trial for adults & a juvenile trial: \_\_\_\_\_  
\_\_\_\_\_

Standard SS8E 1-4

175. Define *voluntary trade*: \_\_\_\_\_

176. Define *profit*: \_\_\_\_\_

177. Define *revenue*: \_\_\_\_\_

178. Define *expenditure*: \_\_\_\_\_

179. Explain the difference between *goods* and *services*: \_\_\_\_\_  
\_\_\_\_\_

Identify the types of goods & services produced in Georgia for each time period for #180-189.

	GOODS	SERVICES
EARLY EUROPEAN CONTACT		
COLONIAL PERIOD		
ANTEBELLUM		
RECONSTRUCTION		
1920'S AND BEYOND		

**You will take the Social Studies portion of the CRCT on:**

\_\_\_\_\_

**Parent Signature Required:** \_\_\_\_\_