



OCTOBER 2017

FISH WRAPPER

Spearfish Area Chamber of Commerce

Get caught with The Hook! Young Professionals gets a makeover.

Have you been a part of that awkward silence during a social function? Well, The Hook strives to eliminate those uncomfortable moments while still providing a platform for professional development. Plus, the events are always easy going and entertaining.

The Hook formally known as YP-Young Professionals is open to anyone in the Spearfish area between the ages of 21 and 40. Attendees include BHSU students and employees, mortgage specialists, administrative assistants, construction based positions, and more.



This summer, the Spearfish Chamber has worked on re-vamping the pro-

gram. The Young Professionals group instated a planning committee to help the Chamber staff. The committee's goals in the revamp were to provide a free drink for attendees and to have fun and interactive activities geared towards the young professionals' interests. The monthly socials should be something people look forward to while

making connections they normally wouldn't make. The group plans to focus on networking, mentorship, and service in the next couple of months. The vision is to establish relationships, empower each other, and engage in the community.

The revamp has been successful. The Hook is averaging 25-30 people at socials and recruited 5-10 new faces each event. Recent socials have included BH Party Pedaler tour, Crow Peak



The Black Hills Party Pedaler brought a smile to all the members' faces.

See more inside.

Meet and Greet with New City Administrator



Hosted by the Chamber & SEDC
Welcome Michael Harmon

Thursday, Oct. 12

7:30-9:00 a.m.

Breakfast by Bay Leaf



Gone Fishin' Mixer



Medical Center of Spearfish
&
Urgent Care

October 26th at 5-7 p.m.
120 E. Michigan St., Spearfish, SD

NEW BUSINESS MEMBERS

Gillette-Campbell County Airport

Shelly Besel
2000 Airport Rd. Ste. 108
Gillette, WY
(307) 686-1042
www.iflygillette.com

4-H Youth Program

Michelle May
117 5th Ave. #103
Belle Fourche
(605) 892-3371
www.igrow.org

South Dakota Overhead Doors

Dillon Julius
430 E. Colorado Blvd.
Spearfish
(605) 717-1500
www.sdoverheaddoors.com

Innovative Business Concepts

Karen Kean
104 W. Hudson St.
Spearfish
(605) 641-1147

RENEWING ASSOCIATE MEMBER

Alyce Schavone

OPEN HOUSES

Ketel Thorstenson, LLP

Thursday, October 12th
4 -6 p.m. | Joy Center
1351 St. Joe St.

Paws & Relax

Canine Lodging & Playcare

Thursday, October 19th
5 -7 p.m. | 493 Tinton Rd.

NATIONAL DISABILITIES EMPLOYMENT AWARENESS MONTH



RENEWING BUSINESS MEMBERS

BankWest Insurance
Black Hills Community Bank
Black Hills Moving and More
Cadillac Jacks Gaming Resort
Century 21 Spearfish Realty, Inc.
Common Cents #122
Donovan Construction
Elkhorn Ridge RV Resort
Fireplaces, Stoves, and More
The Glass Shop
Green Bean Coffeehouse
Heisler's Hardware
Help-U-Rent of the Black Hills
High Mountain Outfitters
The Homeslice Group
Jackson Dental Clinic
Precision Mechanical
Regional Health Dermatology-Spearfish
Regional Health Medical Clinic-10th Avenue
Regional Health Medical Clinic-North Avenue
Regional Health Spearfish Hospital
Regional Health Surgery Center-Spearfish
Regional Orthopedics
Regional Rehabilitation and Sports Medicine
Spearfish Canyon Foundation/Land Trust
Spearfish Community Coalition
Spearfish Community Foundation
Spearfish Foundation for Public Education
Stadium Sports Grill
State Farm Insurance - Garcia
Super 8 - Spearfish
Transmission Specialists
Vanway Trophy & Awards, Inc.
VIP Properties
White's Queen City Motors
Z Bar & Nightclub

Ribbon

Cuttings

Ground

Breaking



Amber and Jesse Horstmann | 3525 E. Colorado Blvd, Ste 3
(605) 559-0307 | www.legacyenterprises.net




NEW MEMBER



Brian Dodge | 2904 4th Ave. | (605) 645-8836



NEW LOCATION



Why Your Dad Was Right About Chamber Memberships

Okay, so maybe your dad never told you anything about chamber memberships but I'm sure between one of your parents you learned the following lessons. And you might be surprised how they apply to chamber memberships.

You Are the Company You Keep

Do you remember this one? Your parents likely told you to be careful who you associate with because people assume certain things about you based on your peer group. So, let's see. If you hang out with business-focused, civic-minded people at the chamber, what does that mean for your business? Only good things. Your parents were right. The company you keep says a lot about you.

One Day You'll Thank Me

The day you join the chamber, you'll be exposed to a lot of incredible knowledge through member connections and a deep resource within the chamber and its programming. But the information doesn't find its way into your brain through osmosis. You need to meet the people who can help your business succeed and attend the programming or watch the videos. If you do, your business and network will grow and you'll thank the chamber one day.

If All Your Friends Jumped off of a Bridge, Would You?

The chamber isn't a cookie-cutter organization offering a one-size solution to your business problems. It's not an equation. The help you can find at the chamber is personalized to your business. It's not about following the crowd, unless you consider personalized best practices or listening to experts in your field as following the crowd.

Manners Don't Cost a Dime

Manners don't cost a dime and neither does making the most of your chamber membership. Whether you make lifelong connections that will help your

business prosper or you never do anything with your chamber membership, the fee is the same. So, what do you say? Why not get involved as much as possible or use those resources to maximum advantage? You have everything to gain and nothing more to spend.

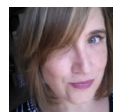
Watch the Other Guy

Keeping an eye on the competition is important. But in today's global economy it doesn't need to just be your competition you keep an eye on. Many successful business people become that way by applying a business' success in another industry to their own. Seeing those possibilities and connections can help you grow in a way your competition isn't. The chamber can assist you in keeping an eye on the other guy but will also help you discover valuable lessons from other business professionals, things that may just help you solve a challenge in your own business.

Life Is Better When You Have a Good Time - and Bring Others Along for the Ride

Chambers aren't stodgy business groups like some people believe. They're comprised of professionals who want to achieve business success and help the community along the way. They advocate for pro-business legislation and bring innovative ideas to the town. They also can throw one heck of an event and they love bringing people along for the ride.

While today's chamber is not your parent's chamber, it still benefits your business. While their programs and offerings have changed with the times, their value is as beneficial as your parents' advice. You may ignore it at first, but ultimately it leads to your growth.



Christina R. Green articles have appeared in the *Midwest Society of Association Executives' Magazine*, *NTEN.org*, *AssociationTech*, and *Socialfish*. She is a regular blogger at *Frankikenny.com* and the *Event Manager Blog*.



BUSINESS REPORT

THE BUSINESS COMMUNICATIONS LINE FOR SPEARFISH AND THE NORTHERN BLACK HILLS



Pictured, from left, Terry Steen, Jim Benning, Vic Uttke, Wayne Klein, Rick Furnish and Joe Jorgensen.

New development unveiled in Spearfish

A special unveiling of Spearfish's newest development, The Village at Creekside was held recently. The Village is located north of Spearfish, on the corner of North Avenue and Yukon Place, adjacent to the Creekside Apartments and alongside Spearfish Creek.

At nearly seven acres, The Village will encompass a fun, comfortable and welcome destination for locals and visitors. Local developers Vic Uttke, Wayne Klein, Rick Furnish, Joe Jorgensen, Terry Steen and Jim Benning say this location is perfect for a multi-use 'village' where people can enjoy the natural beauty of Spearfish Creek while shopping, working, residing, playing in the commons, having coffee, or dining on the patio overlooking Spearfish Creek.

Local business, Amann & Graslie Family Dentistry have announced they will relocate to The Village. To learn more about the land available, visit www.spearfishlandmark.com.

SEDC welcomes Black Hills State economics intern

The Spearfish Economic Development Corporation (SEDC) welcomes Janice Gbedemah as the corporation's fall intern. Janice is an international student from Ghana, West Africa pursuing a degree in economics and finance at Black Hills State University.

As part of her internship, Janice will assist in the creation and distribution of marketing materials, perform economic data collection and analysis, assist with month-end financial reports, writing of press releases as well as assisting in basic office functions. SEDC's internship is structured to provide the intern with substantial—and transferrable—skills and experience to progress professionally and personally.

Janice worked at Black Hills Knowledge Network in Rapid City this summer as the Data Services and Social Media intern. She plans to pursue a career in economic consulting before attending graduate school for International Economics.



Atlas Building Update



BY THE NUMBERS

Building Permits	2017	2016	YTD	YTD 2016
New Residential	6			
New Commercial	2			
Total Permits	39	50		
Total Dollars	\$9,548,085	\$5,080,000	\$40,263,527	\$33,106,784

Sales Tax	2017	2016	YTD	YTD 2016
2nd Penny	\$328,869	\$387,044	\$2,477,628	\$2,450,476
Hospitality	\$59,571	\$56,181	\$386,133	\$381,648

-- Building Permits & Sales Tax based on most recent City of Spearfish report from August 2017.

Labor Force	2017	2016
City of Spearfish		
Total Labor Force	6,328	6,254
Total Employed	6,155	6,081
Total Unemployed	173	173
Percentage Unemployment	2.7%	2.8%
Lawrence County		
Total Labor Force	13,544	13,358
Total Employed	13,144	12,987
Total Unemployed	400	371
Percentage Unemployment	3.0%	2.8%
Northern Hills		
Total Labor Force	83,786	82,059
Total Employed	81,347	79,966
Total Unemployed	2,459	2,073
Percentage Unemployed	2.9%	2.5%

-- Labor Force Data based on most recent SD Dept. of Labor & Regulation report from July 2017.

The Hook continued...

Brewery tour, and a Social Media Scavenger Hunt with Vast Broadband. The Hook has also been encouraging service. Several members suited up for Day of Caring in September hosted by the United Way.

It is a great, low pressure way to meet a variety of people. Jennifer Jungwirth of Spearfish Economic Development said, "It is a great relaxed event to come to after work-get some food, have a drink, and have some casual conversation."



The Hook members take instagrams for the Social Media Scavenger Hunt at the Sept. Social.

The Hook hopes to continue to grow their membership base in the following months. The group encourages anyone to come. No commitment is needed. It isn't just for the suits. The group will have more fun with a diverse the membership.

The Hook is solely run by sponsorship dollars. If you would like to invest in a motivated group of individuals, contact Bailey Sadowsky at (605) 642-2626 or member@spearfishchamber.org.

In October you can see The Hook at Elkhorn Ridge RV Resort and Northern Hills Training Center's Chili Feed.

Follow us on  &  @thehookyp and sign-up for our eblasts.

See back ad for more info on the October social.

GET your business NOTICED

2018 IN-ROOM GUIDE

The In-Room Guide has been produced by the Spearfish Chamber of Commerce for the past 18 years with much success noted by both businesses and travelers alike.

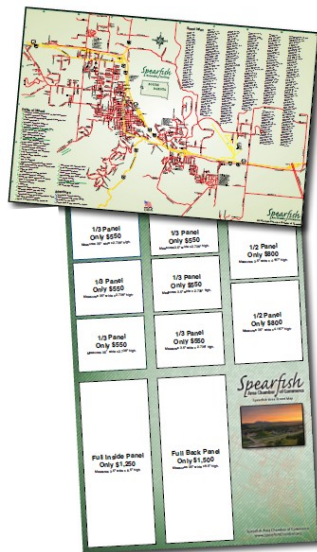
Placed in 800 rooms!

Take a step in getting your business noticed by nearly 200,000. The In-Room Guide is placed in lodging facilities in and around the Spearfish area. Advertising in this guide gives you coverage in most of the hotels and campgrounds in Spearfish, along with many vacation homes throughout the Northern Hills.



DEADLINE: OCTOBER 9TH

Promote/Pinpoint Your Business on the NEW 2018 Spearfish Street Map!



The Spearfish Area Chamber of Commerce is updating its top-notch, full-color, foldable street map. The map serves visitors and area residents. Only about 13 display advertising spaces are available on the map.

Benefits include:

- 10,000 copies distributed over two years
- Viewable on the Chamber's website with links to advertisers
- Mailed in relocation packets
- Banner or tile ad on website for 6 months
- And more!

For More Information contact Bailey Sadowsky at (605) 642-2626 or member@spearfishchamber.org

20% Discount for exposure on BOTH the In-Room Guide & Map! Contact Bailey at the Chamber

COFFEE & CONVERSATION

Every Thursday Morning from 8-9 a.m. | 106 W Kansas St.

Hosted by Spearfish Chamber & Spearfish Economic Development Corporation



Spearfish Area Chamber of Commerce

605-642-2626

106 W. Kansas
Spearfish, SD 57783

PRESORTED
STANDARD
US POSTAGE PAID
PERMIT #56
SPEARFISH, SD

ADDRESS SERVICE REQUESTED

2017 Chamber Board of Directors & Staff

Kelsie Darling
Chair
Quik Signs

Angie Black
Vice Chair
Spearfish Holiday Inn Hotel &
Convention Center

Barbara Cline
Past Chair
Prairie Hills Transit & Child Care

Jason Boke
Northern Hills Technology &
Digital Designs

Steve Byrd
First Western Insurance

Chris Davis
Northern Hills Training Center

TJ Gusso
First Interstate Bank

Todd Jensen
Spearfish GMC Cadillac

Kevin Rhoades
White's Canyon Motors

Jenny Scholl
Master's Auto Detailing

Jenni Tucker
Help-U-Rent / Black Hills Blinds

Jess Weaver
Ketel Thorstenson, LLP

Ex-Officio Officers
Mistie Caldwell, Visit Spearfish

Michelle DeNeui, City of Spearfish

Kory Menken, SEDC

Treasurer
Sharon E. Hoggatt, CPA, PC

Staff
Melissa Barth, IOM
Executive Director

Tammy McDaniel
Office & Program Coordinator

Bailey Sadowsky
Sales & Communication Coordinator

NOV 25



Less than 2 months **#SHOPSMALL #SPEARFISHFIRST**

**MAKE A
BIG IMPACT
SHOP SMALL**
★
SMALL BUSINESS SATURDAY



OCT-OBER

**FEATURED GUEST
DORCIE JOHNER**
KELLER WILLIAMS REALTY

MORE GUESTS TO BE
ANNOUNCED.  

SOCIAL

Photo by Autumn Mott on Unsplash

BUILD YOUR OWN S'MORE

OCTOBER 10TH
5:00-6:30 P.M.



AGES 21-40
FREE DRINKS

