

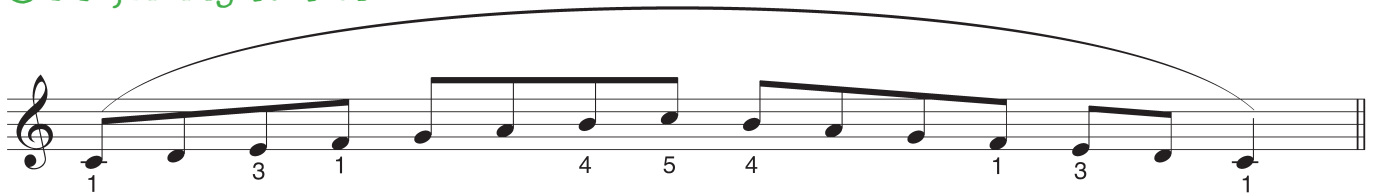
# Get Set! Piano Tutor and Pieces Books 2: scales, arpeggios and broken chords

## Scales - one octave separately

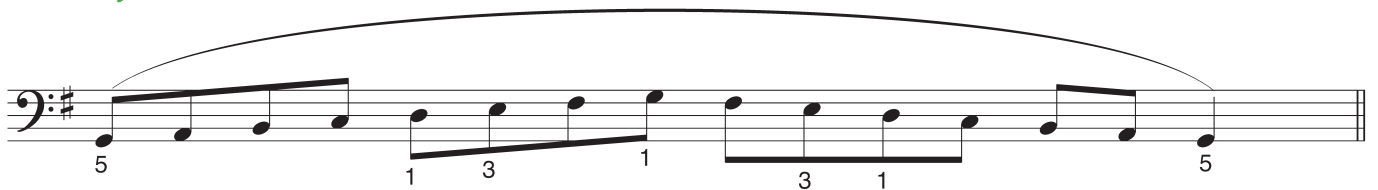
### C major left hand



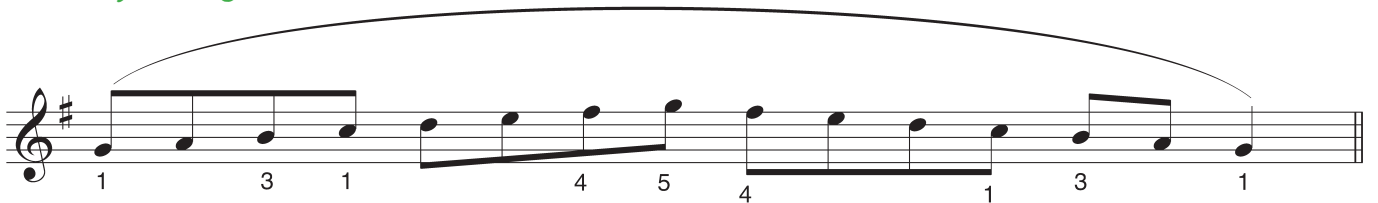
### C major right hand



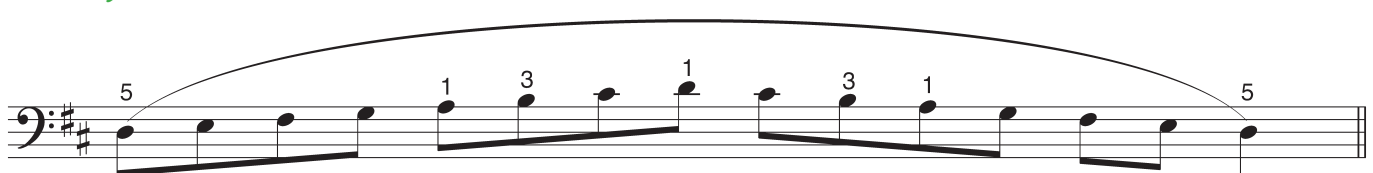
### G major left hand



### G major right hand



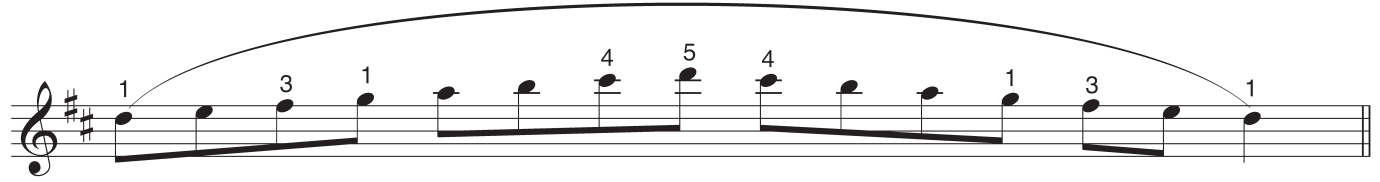
### D major left hand



# Scales, arpeggios and broken chords

## Scales - one octave separately (cont.)

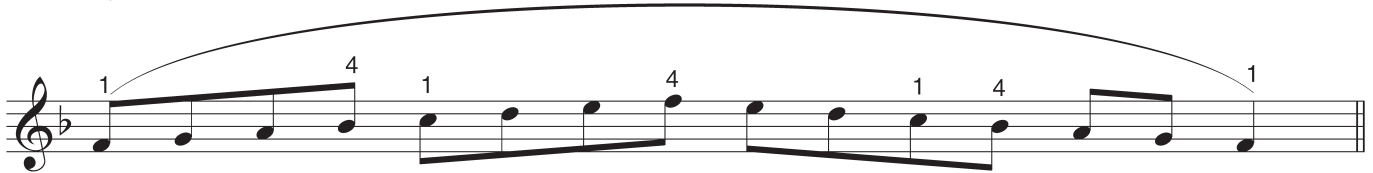
### D major right hand



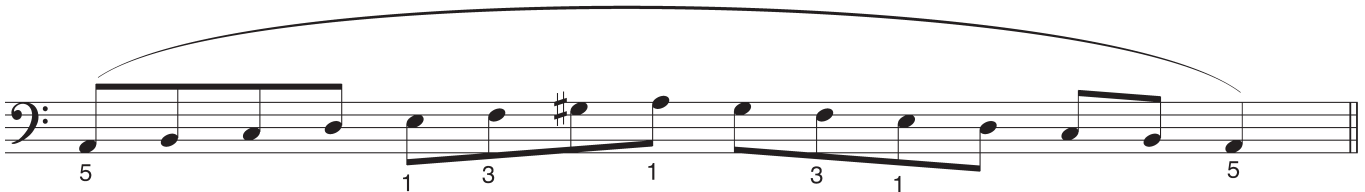
### F major left hand



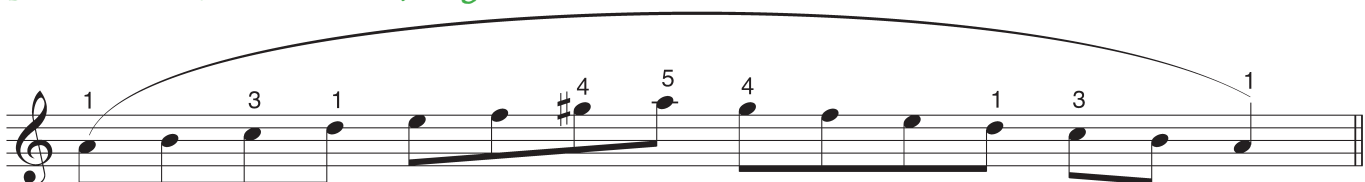
### F major right hand



### A minor (harmonic) left hand



### A minor (harmonic) right hand



# Scales, arpeggios and broken chords

## Scales - one octave separately (cont.)

### E minor (harmonic) left hand

Musical notation for the E minor (harmonic) left hand scale. The scale is written in bass clef with a key signature of one sharp (F#). The notes are: E2, F2, G2, A2, B2, C3, D3, E3, F#3, G3, A3, B3, C4, D4, E4. Fingerings are indicated by numbers 1-5 below the notes: 5, 1, 3, 1, 3, 1, 3, 1, 5.

### E minor (harmonic) right hand

Musical notation for the E minor (harmonic) right hand scale. The scale is written in treble clef with a key signature of one sharp (F#). The notes are: E4, F4, G4, A4, B4, C5, D5, E5, F#5, G5, A5, B5, C6, D6, E6. Fingerings are indicated by numbers 1-5 below the notes: 1, 3, 1, 4, 5, 4, 1, 3, 1.

### D minor (harmonic) left hand

Musical notation for the D minor (harmonic) left hand scale. The scale is written in bass clef with a key signature of two flats (Bb, Eb). The notes are: D2, Eb2, F2, G2, Ab2, Bb2, C3, D3, Eb3, F3, G3, Ab3, Bb3, C4, D4. Fingerings are indicated by numbers 1-5 below the notes: 5, 1, 3, 1, 3, 1, 3, 1, 5.

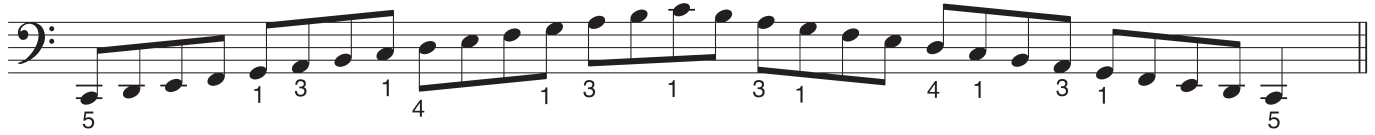
### D minor (harmonic) right hand

Musical notation for the D minor (harmonic) right hand scale. The scale is written in treble clef with a key signature of two flats (Bb, Eb). The notes are: D4, Eb4, F4, G4, Ab4, Bb4, C5, D5, Eb5, F5, G5, Ab5, Bb5, C6, D6. Fingerings are indicated by numbers 1-5 below the notes: 1, 3, 1, 4, 5, 4, 1, 3, 1.

# Scales, arpeggios and broken chords

## Scales - two octaves separately

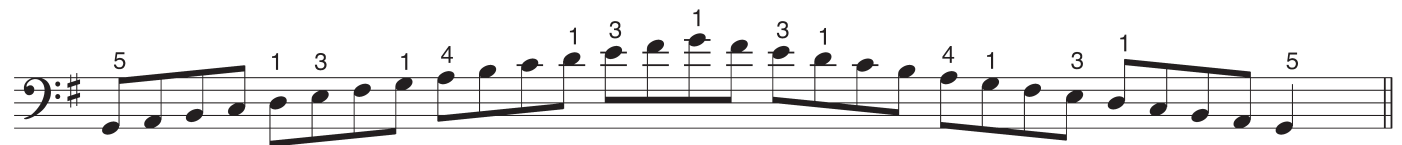
### C major left hand



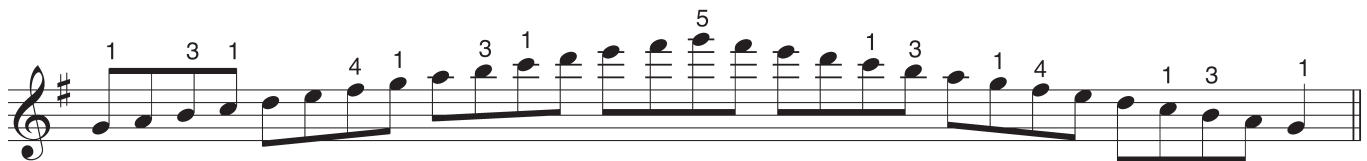
### C major right hand



### G major left hand



### G major right hand



### D major left hand

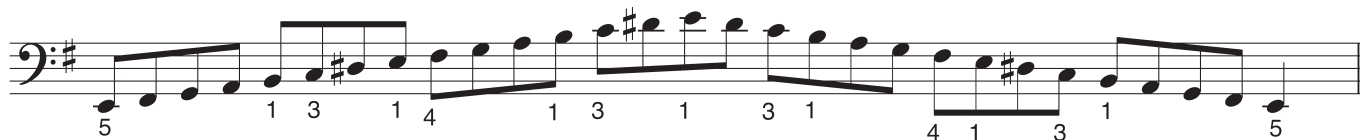




# Scales, arpeggios and broken chords

## Scales - two octaves separately (cont.)

### E minor (harmonic) left hand



### E minor (harmonic) right hand



# Scales, arpeggios and broken chords

## Scales - one octave together

### C major

Musical notation for the C major scale, one octave together. The piece is in C major (one sharp) and common time. The right hand (treble clef) starts on middle C (C4) and ascends to C5, while the left hand (bass clef) descends from C4 to C3. The scale is played in a single breath, indicated by a slur over both staves. Fingerings are: RH (1, 3, 1, 4, 5, 4, 1, 3, 1) and LH (5, 1, 3, 1, 3, 1, 3, 1, 5).

### G major

Musical notation for the G major scale, one octave together. The piece is in G major (two sharps) and common time. The right hand (treble clef) starts on G4 and ascends to G5, while the left hand (bass clef) descends from G4 to G3. The scale is played in a single breath, indicated by a slur over both staves. Fingerings are: RH (1, 3, 1, 4, 5, 4, 1, 3, 1) and LH (5, 1, 3, 1, 3, 1, 3, 1, 5).

### D major

Musical notation for the D major scale, one octave together. The piece is in D major (two sharps) and common time. The right hand (treble clef) starts on D4 and ascends to D5, while the left hand (bass clef) descends from D4 to D3. The scale is played in a single breath, indicated by a slur over both staves. Fingerings are: RH (1, 3, 1, 4, 5, 4, 1, 3, 1) and LH (5, 1, 3, 1, 3, 1, 3, 1, 5).

# Scales, arpeggios and broken chords

## Duets for right hand scales - one octave

### C major

musical score for C major scale duet. The pupil part is in treble clef, 4/4 time, with fingerings: 1 2 3 1 2 3 4 5 4 3 2 1 3 2 1. The teacher part is in bass clef, 4/4 time, with chords: C4-E4-G4, C4-E4-G4, C4-E4-G4, C4-E4-G4, C4-E4-G4, C4-E4-G4, C4-E4-G4, C4-E4-G4.

### G major

musical score for G major scale duet. The pupil part is in treble clef, 4/4 time, with fingerings: 1 2 3 1 2 3 4 5 4 3 2 1 3 2 1. The teacher part is in bass clef, 4/4 time, with chords: G2-B2-D3, G2-B2-D3, G2-B2-D3, G2-B2-D3, G2-B2-D3, G2-B2-D3, G2-B2-D3, G2-B2-D3.

### D major

musical score for D major scale duet. The pupil part is in treble clef, 4/4 time, with fingerings: 1 2 3 1 2 3 4 5 4 3 2 1 3 2 1. The teacher part is in bass clef, 4/4 time, with chords: D2-F#2-A2, D2-F#2-A2, D2-F#2-A2, D2-F#2-A2, D2-F#2-A2, D2-F#2-A2, D2-F#2-A2, D2-F#2-A2.

### F major

musical score for F major scale duet. The pupil part is in treble clef, 4/4 time, with fingerings: 1 2 3 4 1 2 3 4 3 2 1 4 3 2 1. The teacher part is in bass clef, 4/4 time, with chords: F2-A2-C3, F2-A2-C3, F2-A2-C3, F2-A2-C3, F2-A2-C3, F2-A2-C3, F2-A2-C3, F2-A2-C3.



# Scales, arpeggios and broken chords

## Duets for right hand scales - one octave (cont.)

### A minor (harmonic)

pupil

teacher

### E minor (harmonic)

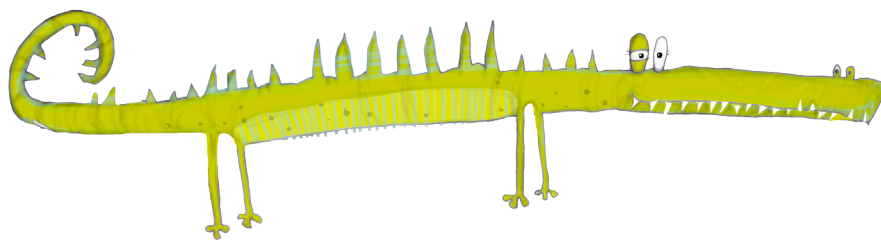
pupil

teacher

### D minor (harmonic)

pupil

teacher



# Scales, arpeggios and broken chords

## Duets for right hand scales - two octaves

### C major

musical score for C major scale duet. The pupil part (treble clef) consists of four measures of an ascending and descending scale with fingerings: 1, 3, 1, 4, 1, 3, 1, 5, 1, 3, 1, 4, 1, 3, 1. The teacher part (bass clef) consists of four measures of broken chords: C major, F major, C major, F major.

### G major

musical score for G major scale duet. The pupil part (treble clef) consists of four measures of an ascending and descending scale with fingerings: 1, 3, 1, 4, 1, 3, 1, 5, 1, 3, 1, 4, 1, 3, 1. The teacher part (bass clef) consists of four measures of broken chords: G major, C major, G major, C major.

### D major

musical score for D major scale duet. The pupil part (treble clef) consists of four measures of an ascending and descending scale with fingerings: 1, 3, 1, 4, 1, 3, 1, 5, 1, 3, 1, 4, 1, 3, 1. The teacher part (bass clef) consists of four measures of broken chords: D major, G major, D major, G major.

### F major

musical score for F major scale duet. The pupil part (treble clef) consists of four measures of an ascending and descending scale with fingerings: 1, 4, 1, 3, 1, 4, 1, 4, 1, 4, 1, 3, 1, 4, 1. The teacher part (bass clef) consists of four measures of broken chords: F major, C major, F major, C major.

# Scales, arpeggios and broken chords

## Duets for right hand scales - two octaves (cont.)

### A minor (harmonic)

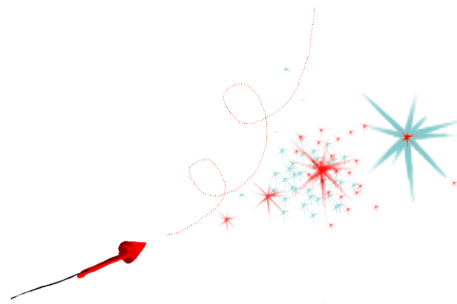
musical score for A minor (harmonic) duet. The pupil part is in treble clef, 4/4 time, with fingerings 1 3 1 4 1, 3 1, 5, 1 3, 1 4, 1 3 1. The teacher part is in bass clef, 4/4 time, with fingerings 1 3 1, 1 3 1, 1 3 1, 1 3 1.

### E minor (harmonic)

musical score for E minor (harmonic) duet. The pupil part is in treble clef, 4/4 time, with fingerings 1 3 1 4 1, 3 1, 5, 1 3, 1 4, 1 3 1. The teacher part is in bass clef, 4/4 time, with fingerings 1 3 1, 1 3 1, 1 3 1, 1 3 1.

### D minor (harmonic)

musical score for D minor (harmonic) duet. The pupil part is in treble clef, 4/4 time, with fingerings 1 3 1 4 1, 3 1, 5, 1 3, 1 4, 1 3 1. The teacher part is in bass clef, 4/4 time, with fingerings 1 3 1, 1 3 1, 1 3 1, 1 3 1.



# Scales, arpeggios and broken chords

## Duets for left hand scales - one octave

### C major

teacher

pupil

5 4 3 2 1 3 2 1 2 3 1 2 3 4 5

Detailed description: This musical score is for the C major scale. The teacher's part is in the right hand, starting with a C major triad (C-E-G) and followed by a descending eighth-note scale: G4-F4-E4-D4-C4. The pupil's part is in the left hand, starting with an ascending eighth-note scale: C3-D3-E3-F3-G3-A3-B3-C4, followed by a descending eighth-note scale: B3-A3-G3-F3-E3-D3-C3. Fingering numbers are provided below the notes.

### G major

teacher

pupil

5 4 3 2 1 3 2 1 2 3 1 2 3 4 5

Detailed description: This musical score is for the G major scale. The teacher's part is in the right hand, starting with a G major triad (G-B-D) and followed by a descending eighth-note scale: F#4-E4-D4-C4. The pupil's part is in the left hand, starting with an ascending eighth-note scale: G3-A3-B3-C4, followed by a descending eighth-note scale: B3-A3-G3-F#3-E3-D3-C3. Fingering numbers are provided below the notes.

### D major

teacher

pupil

5 4 3 2 1 3 2 1 2 3 1 2 3 4 5

Detailed description: This musical score is for the D major scale. The teacher's part is in the right hand, starting with a D major triad (D-F#-A) and followed by a descending eighth-note scale: C#4-B4-A4-G4. The pupil's part is in the left hand, starting with an ascending eighth-note scale: D3-E3-F#3-G4, followed by a descending eighth-note scale: F#3-E3-D3-C#3-B2-A2-G2. Fingering numbers are provided below the notes.

### F major

teacher

pupil

5 4 3 2 1 3 2 1 2 3 1 2 3 4 5

Detailed description: This musical score is for the F major scale. The teacher's part is in the right hand, starting with an F major triad (F-A-C) and followed by a descending eighth-note scale: E4-D4-C4-B3. The pupil's part is in the left hand, starting with an ascending eighth-note scale: F3-G3-A3-B3-C4, followed by a descending eighth-note scale: B3-A3-G3-F3-E3-D3-C3. Fingering numbers are provided below the notes.

# Scales, arpeggios and broken chords

## Duets for left hand scales – one octave (cont.)

### A minor (harmonic)

teacher

pupil

5 4 3 2 1 3 2 1 2 3 1 2 3 4 5

Detailed description: This musical score is for the A minor harmonic scale. The teacher's part is in the treble clef, 4/4 time, and consists of two measures of chords: A minor, G major, F# major, and E minor. The pupil's part is in the bass clef, 4/4 time, and consists of two measures of a scale: an ascending scale from G4 to G5 and a descending scale from G5 to G4. Fingering numbers are provided below the notes.

### E minor (harmonic)

teacher

pupil

5 4 3 2 1 3 2 1 2 3 1 2 3 4 5

Detailed description: This musical score is for the E minor harmonic scale. The teacher's part is in the treble clef, 4/4 time, and consists of two measures of chords: E minor, D major, C# major, and B minor. The pupil's part is in the bass clef, 4/4 time, and consists of two measures of a scale: an ascending scale from D4 to D5 and a descending scale from D5 to D4. Fingering numbers are provided below the notes.

### D minor (harmonic)

teacher

pupil

5 4 3 2 1 3 2 1 2 3 1 2 3 4 5

Detailed description: This musical score is for the D minor harmonic scale. The teacher's part is in the treble clef, 4/4 time, and consists of two measures of chords: D minor, C major, B major, and A minor. The pupil's part is in the bass clef, 4/4 time, and consists of two measures of a scale: an ascending scale from C4 to C5 and a descending scale from C5 to C4. Fingering numbers are provided below the notes.



# Scales, arpeggios and broken chords

## Duets for left hand scales - two octaves

### C major

teacher

pupil

5 1 3 1 4 1 3 1 3 1 4 1 3 1 5

Detailed description: This musical score is for the C major scale. The teacher's part is in the treble clef, and the pupil's part is in the bass clef. Both are in 4/4 time. The teacher's part consists of four measures of chords and eighth-note patterns. The pupil's part consists of four measures of eighth-note scales, with fingerings indicated by numbers 1-5. The scale is played over two octaves.

### G major

teacher

pupil

5 1 3 1 4 1 3 1 3 1 4 1 3 1 5

Detailed description: This musical score is for the G major scale. The teacher's part is in the treble clef, and the pupil's part is in the bass clef. Both are in 4/4 time. The teacher's part consists of four measures of chords and eighth-note patterns. The pupil's part consists of four measures of eighth-note scales, with fingerings indicated by numbers 1-5. The scale is played over two octaves.

### D major

teacher

pupil

5 1 3 1 4 1 3 1 3 1 4 1 3 1 5

Detailed description: This musical score is for the D major scale. The teacher's part is in the treble clef, and the pupil's part is in the bass clef. Both are in 4/4 time. The teacher's part consists of four measures of chords and eighth-note patterns. The pupil's part consists of four measures of eighth-note scales, with fingerings indicated by numbers 1-5. The scale is played over two octaves.

### F major

teacher

pupil

5 1 3 1 4 1 3 1 3 1 4 1 3 1 5

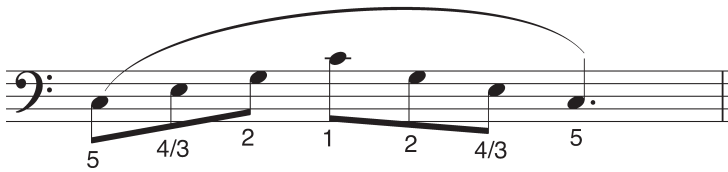
Detailed description: This musical score is for the F major scale. The teacher's part is in the treble clef, and the pupil's part is in the bass clef. Both are in 4/4 time. The teacher's part consists of four measures of chords and eighth-note patterns. The pupil's part consists of four measures of eighth-note scales, with fingerings indicated by numbers 1-5. The scale is played over two octaves.



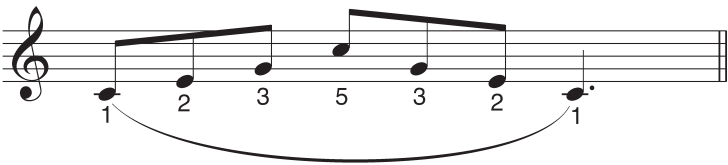
# Scales, arpeggios and broken chords

## Arpeggios - separately

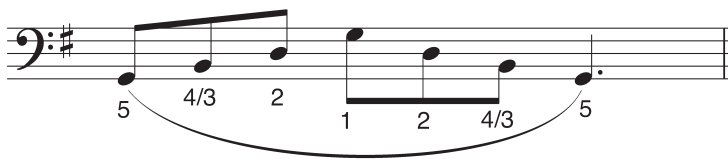
### C major left hand



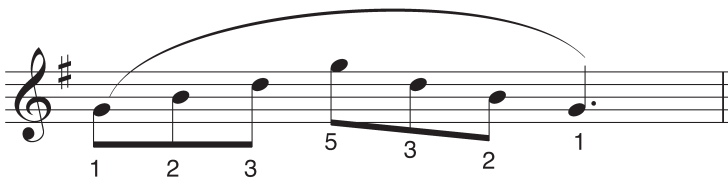
### C major right hand



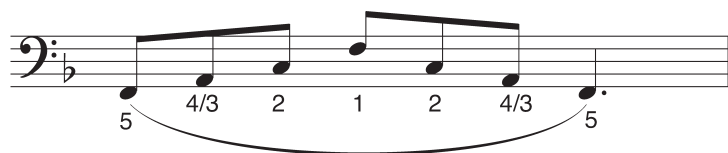
### G major left hand



### G major right hand



### F major left hand



### F major right hand

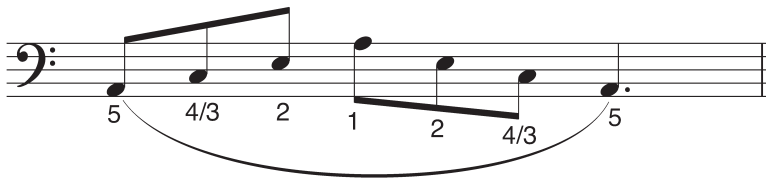




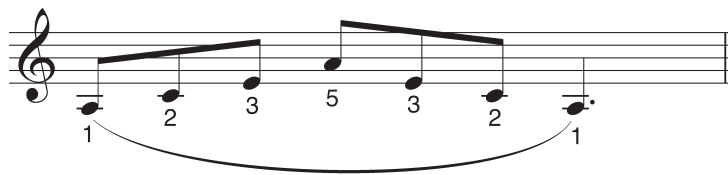
# Scales, arpeggios and broken chords

## Arpeggios - separately (cont.)

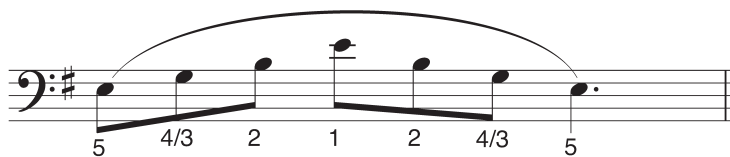
### A minor left hand



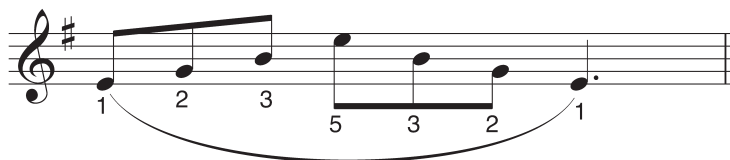
### A minor right hand



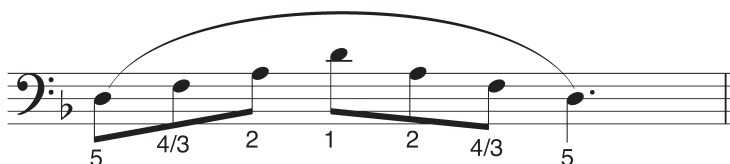
### E minor left hand



### E minor right hand



### D minor left hand



### D minor right hand



# Scales, arpeggios and broken chords

## Broken chords – separately

### C major left hand

Musical notation for the C major left hand scale in bass clef. The scale is written in two phrases: an ascending phrase and a descending phrase. Fingerings are indicated by numbers 1-5 below the notes. The ascending phrase starts on C4 and ends on C5, with fingerings 5, 3, 1, 5, 3, 1, 5, 2, 1, 2. The descending phrase starts on C5 and ends on C4, with fingerings 1, 2, 5, 1, 3, 5, 1, 3, 5, 1.

### C major right hand

Musical notation for the C major right hand scale in treble clef. The scale is written in two phrases: an ascending phrase and a descending phrase. Fingerings are indicated by numbers 1-5 below the notes. The ascending phrase starts on C4 and ends on C5, with fingerings 1, 3, 5, 1, 2, 5, 1, 3, 5, 3. The descending phrase starts on C5 and ends on C4, with fingerings 5, 3, 1, 5, 2, 1, 5, 3, 1, 5.

### G major left hand

Musical notation for the G major left hand scale in bass clef. The scale is written in two phrases: an ascending phrase and a descending phrase. Fingerings are indicated by numbers 1-5 below the notes. The ascending phrase starts on G3 and ends on G4, with fingerings 5, 3, 1, 5, 3, 1, 5, 2, 1, 2. The descending phrase starts on G4 and ends on G3, with fingerings 1, 2, 5, 1, 3, 5, 1, 3, 5, 1.

### G major right hand

Musical notation for the G major right hand scale in treble clef. The scale is written in two phrases: an ascending phrase and a descending phrase. Fingerings are indicated by numbers 1-5 below the notes. The ascending phrase starts on G4 and ends on G5, with fingerings 1, 3, 5, 1, 2, 5, 1, 3, 5, 3. The descending phrase starts on G5 and ends on G4, with fingerings 5, 3, 1, 5, 2, 1, 5, 3, 1, 5.

### F major left hand

Musical notation for the F major left hand scale in bass clef. The scale is written in two phrases: an ascending phrase and a descending phrase. Fingerings are indicated by numbers 1-5 below the notes. The ascending phrase starts on F3 and ends on F4, with fingerings 5, 3, 1, 5, 3, 1, 5, 2, 1, 2. The descending phrase starts on F4 and ends on F3, with fingerings 1, 2, 5, 1, 3, 5, 1, 3, 5, 1.

### F major right hand

Musical notation for the F major right hand scale in treble clef. The scale is written in two phrases: an ascending phrase and a descending phrase. Fingerings are indicated by numbers 1-5 below the notes. The ascending phrase starts on F4 and ends on F5, with fingerings 1, 3, 5, 1, 2, 5, 1, 3, 5, 3. The descending phrase starts on F5 and ends on F4, with fingerings 5, 3, 1, 5, 2, 1, 5, 3, 1, 5.

# Scales, arpeggios and broken chords

## Broken chords – separately (cont.)

### A minor left hand

Two measures of a broken chord scale in A minor for the left hand, bass clef. The first measure contains the notes G, F, E, D, C, B, A, G with fingerings 5, 3, 1, 5, 3, 1, 5, 2, 1, 2. The second measure contains the notes G, F, E, D, C, B, A, G with fingerings 1, 2, 5, 1, 3, 5, 1, 3, 5, 1. A slur covers the first five notes of each measure.

### A minor right hand

Two measures of a broken chord scale in A minor for the right hand, treble clef. The first measure contains the notes G, F, E, D, C, B, A, G with fingerings 1, 3, 5, 1, 2, 5, 1, 3, 5, 3. The second measure contains the notes G, F, E, D, C, B, A, G with fingerings 5, 3, 1, 5, 2, 1, 5, 3, 1, 5. A slur covers the first five notes of each measure.

### E minor left hand

Two measures of a broken chord scale in E minor for the left hand, bass clef. The first measure contains the notes D, C, B, A, G, F, E, D with fingerings 5, 3, 1, 5, 3, 1, 5, 2, 1, 2. The second measure contains the notes D, C, B, A, G, F, E, D with fingerings 1, 2, 5, 1, 3, 5, 1, 3, 5, 1. A slur covers the first five notes of each measure.

### E minor right hand

Two measures of a broken chord scale in E minor for the right hand, treble clef. The first measure contains the notes D, C, B, A, G, F, E, D with fingerings 1, 3, 5, 1, 2, 5, 1, 3, 5, 3. The second measure contains the notes D, C, B, A, G, F, E, D with fingerings 5, 3, 1, 5, 2, 1, 5, 3, 1, 5. A slur covers the first five notes of each measure.

### D minor left hand

Two measures of a broken chord scale in D minor for the left hand, bass clef. The first measure contains the notes C, B, A, G, F, E, D, C with fingerings 5, 3, 1, 5, 3, 1, 5, 2, 1, 2. The second measure contains the notes C, B, A, G, F, E, D, C with fingerings 1, 2, 5, 1, 3, 5, 1, 3, 5, 1. A slur covers the first five notes of each measure.

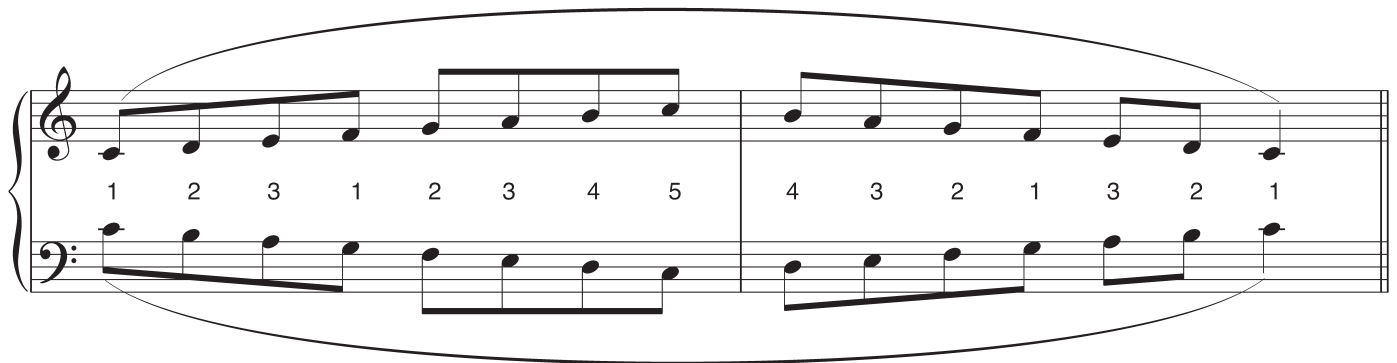
### D minor right hand

Two measures of a broken chord scale in D minor for the right hand, treble clef. The first measure contains the notes C, B, A, G, F, E, D, C with fingerings 1, 3, 5, 1, 2, 5, 1, 3, 5, 3. The second measure contains the notes C, B, A, G, F, E, D, C with fingerings 5, 3, 1, 5, 2, 1, 5, 3, 1, 5. A slur covers the first five notes of each measure.

# Scales, arpeggios and broken chords

## Contrary motion scales – one octave

### C major



### Chromatic

