



NORTH CAROLINA

Department of Transportation



Getting Started with ArcGIS Pro

By Cathy Cole, NCDOT GIS Unit

April 24, 2018

ArcGIS Pro Resources

- Getting started with ArcGIS Pro –
(ESRI link: <http://pro.arcgis.com/en/pro-app/get-started/arcgis-pro-system-requirements-2-0-0.htm>)
- For ArcGIS Pro videos, tutorials and resource information, sign in to your ESRI Global account and search for ArcGIS Pro Resources:
<https://www.esri.com/en-us/arcgis/products/arcgis-pro/resources/arcgis-pro-resources>
- ITRE classes - <https://itre.ncsu.edu/calendar/arcgis/>

System Requirements for ArcGIS Pro 2.0

- ArcGIS License Manager 10.5.1 or later is required to manage ArcGIS Pro 2.0 Named User licenses with ArcGIS Enterprise or to manage Concurrent Use licenses.
- Windows Server 2016 Standard and Datacenter were added as supported operating systems.
- The latest Windows 10 update tested is now Creators Update instead of Anniversary Update.
- Microsoft Internet Explorer 11 continues to be a software requirement but the earlier version, Internet Explorer 10, was removed because it is no longer supported.
- ArcGIS Pro is now supported as a hosted application running on the following virtual desktop infrastructure: VMware vSphere 6.5 (using VMware Horizon View 7.0 or later) and Citrix XenDesktop 7.13.

Supported operating systems:

Operating systems	Latest update or service pack tested
Windows 10 Home, Pro, and Enterprise (64 bit)	Creators Update
Windows 8.1 Pro and Enterprise (64 bit)	Update: April 2017
Windows 7 Ultimate, Professional, and Enterprise (64 bit)	SP1 and KB2533623
Windows Server 2016 Standard and Datacenter (64 bit)	
Windows Server 2012 R2 Standard and Datacenter (64 bit)	Update: April 2017
Windows Server 2012 Standard and Datacenter (64 bit)	Update: April 2017
Windows Server 2008 R2 Standard, Enterprise, and Datacenter (64 bit)	SP1 and KB2533623

NOTE: Windows 8 is no longer supported by Microsoft. Upgrade to Windows 8.1 or later.

Hardware requirements:

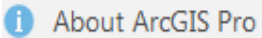
CPU speed	Minimum: Hyperthreaded dual core* Recommended: Quad core* Optimal: 2x hyperthreaded hexa core*
Platform	x64 with SSE2 extensions
Memory/RAM	Minimum: 4 GB Recommended: 8 GB Optimal: 16+ GB
Display properties	24-bit color depth Also see Video/Graphics adapter requirements below.
Screen resolution	1024x768 or higher at normal size (96 dpi)
Visualization cache	The temporary visualization cache for ArcGIS Pro can consume up to 32 GB of space, if available, in the user-selected location. By default, the visualization cache is written to the user profile.**
Storage	Minimum: 4 GB of free space Recommended: 6 GB or more of free space on a solid-state drive (SSD)

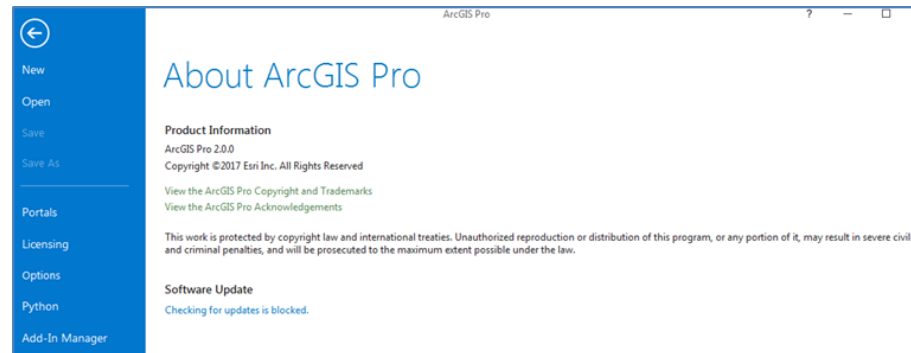
Licensing

The [three license types for ArcGIS Pro](#) 2.0 are as follows:

- [Named User license](#)—Using a named user license means that access to ArcGIS Pro is granted to you via your organizational account in ArcGIS Online or ArcGIS Enterprise. In both cases, an administrator will allocate an ArcGIS Pro license to you from within your organization's ArcGIS Online organization or ArcGIS Enterprise portal; this is the standard workflow. If you are using ArcGIS Online, the standard workflow is all that is required. However, if you are using ArcGIS Enterprise, you must also use ArcGIS License Manager 10.5.1 to manage your ArcGIS Pro license allocations. To use ArcGIS Enterprise, you must have version 10.5 or later.
- [Concurrent Use license](#)—ArcGIS License Manager 10.5.1 or later is required to manage ArcGIS Pro 2.0 licenses.
- [Single Use license](#)—No additional software is required for licensing.
- The application runs with the license level (Advanced, Standard, or Basic) specified by the organization administrator and with any extensions for which licenses have been assigned. The license type and level can be seen in ArcGIS Pro on the Licensing page. It is possible to have a combination of ArcGIS Pro license types.

Using ArcGIS Pro

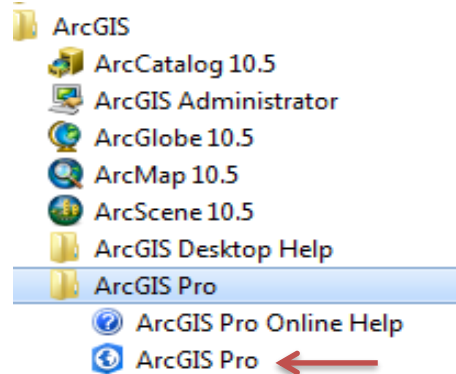
- If ArcGIS Pro is installed on your computer and you want to check the version, launch the software, then click the About ArcGIS Pro button at bottom  and this screen will pop up:



- It is also possible to import existing map documents, layouts, and data into ArcGIS Pro from ArcMap. You can use both ArcGIS Pro and ArcMap to access and work with local data and online services. Both applications can reside together on the same computer.
- ArcGIS Pro quick-start tutorials introduce you to many aspects of ArcGIS Pro. They cover basic operations, workflows, layouts and analysis models. These can be accessed from <http://pro.arcgis.com/en/pro-app/get-started/pro-quickstart-tutorials.htm> . ESRI also offers other ArcGIS Pro training, some of which are free, from the training catalog: <https://www.esri.com/training/catalog/search/> .

Getting Started with ArcGIS Pro

- Click Windows Start Programs button, All Programs, ArcGIS, ArcGIS Pro and click ArcGIS Pro.




- Once you start ArcGIS Pro, you may need to sign in to your ArcGIS Online or Portal account to verify your license.

Getting Started with ArcGIS Pro

- NCDOT's organizational ArcGIS online account

ArcGIS Sign In

ArcGIS Pro wants to access your ArcGIS Online account information

Sign in to North Carolina Department of Transportation 

Using

NCDOT

OR

ARCGIS

Username
ccole


Password
.....|

SIGN IN CANCEL

[Forgot password?](#) [Forgot username?](#)

Sign me in automatically

ArcGIS Pro developed by:

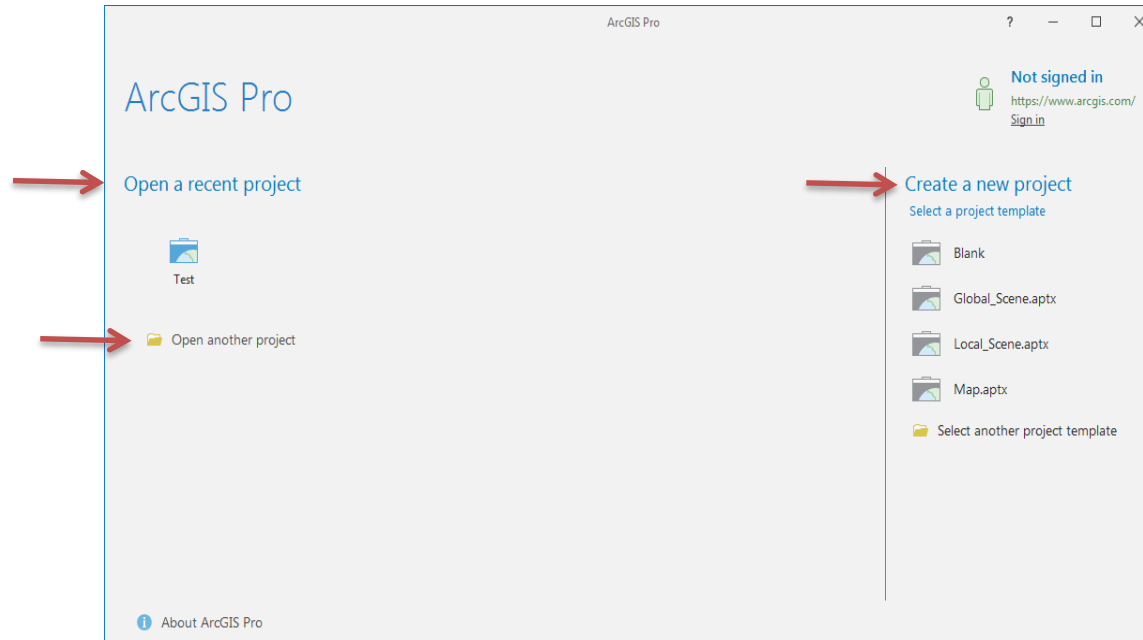


Esri

Esri publishes a set of ready-to-use maps and apps that are available as part of ArcGIS. ArcGIS is a mapping platform that enables you to create interactive maps and apps to share within your organization or publicly.

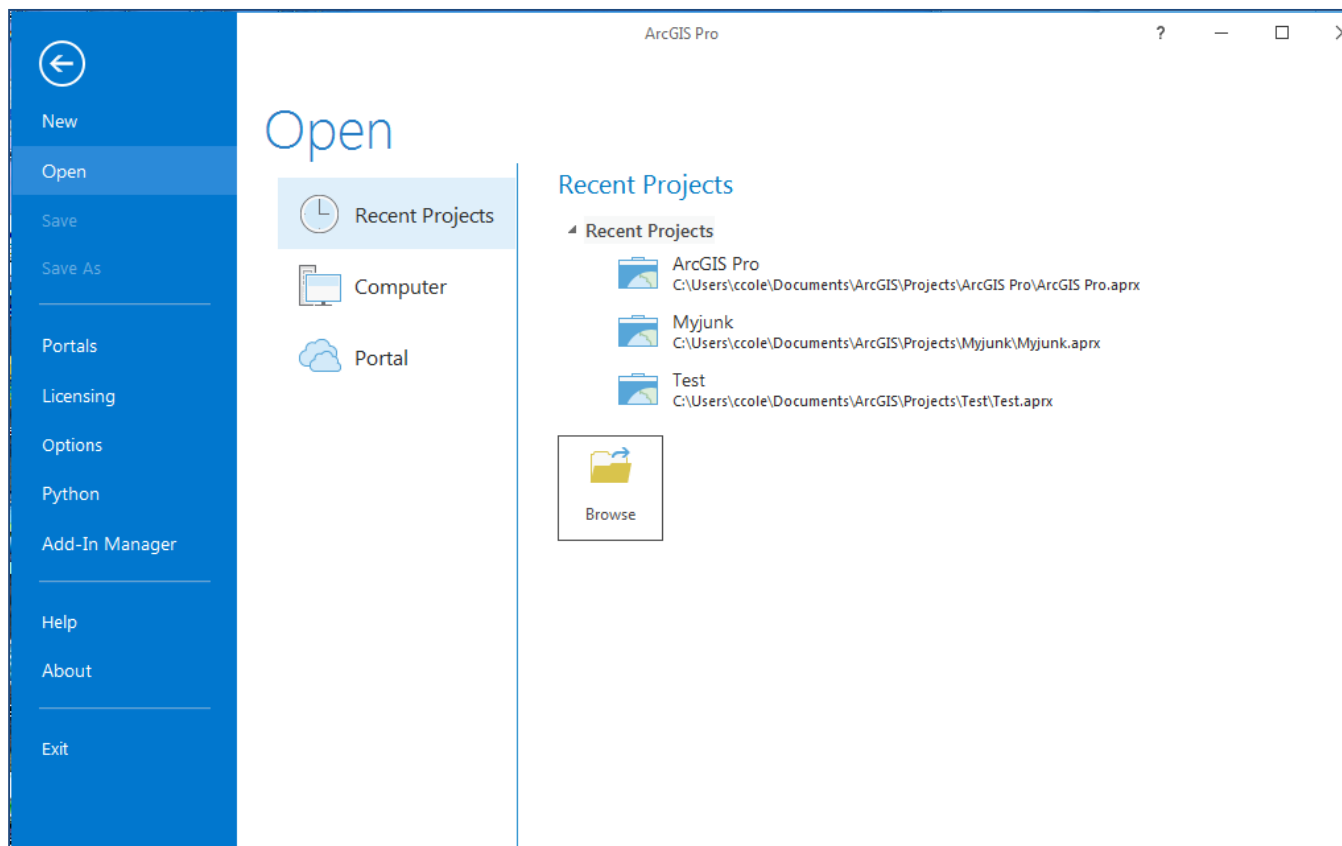
Getting Started with ArcGIS Pro

- From the ArcGIS Pro menu, you can open a recent project, browse for other projects or create a new project.



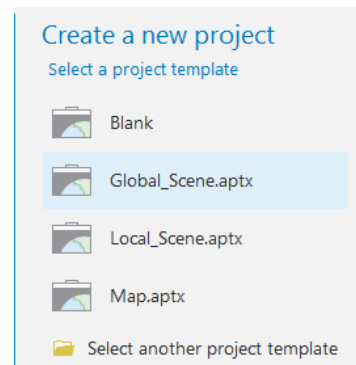
Open Another Project

- From the start page, click Open another project or Open an existing project.



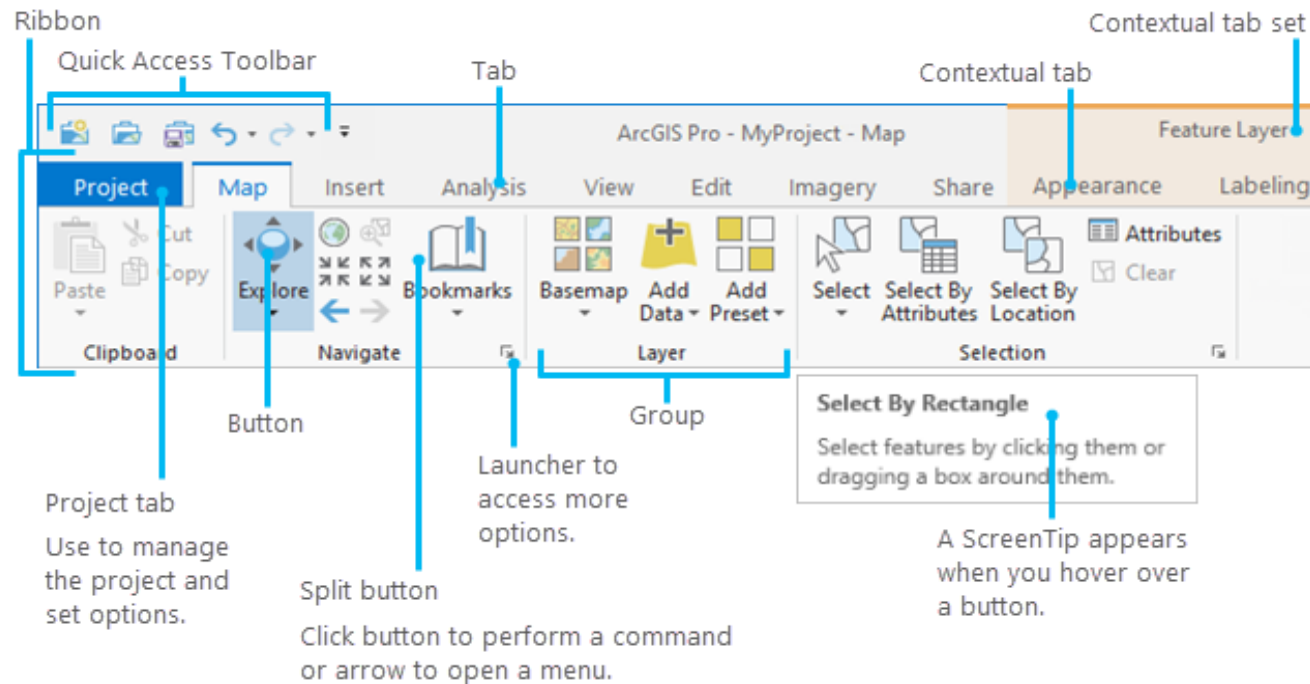
Create a New Project

- The ArcGIS Pro start page lists several project templates to choose from. Some are provided with the software to help you get started, for example:
- To build a 2D map, select the Map template.
- To create a 3D global scene, select the Global Scene template.
- To start with a 3D local scene, select the Local Scene template.
- To create a new project that is completely empty, select the Blank project template.

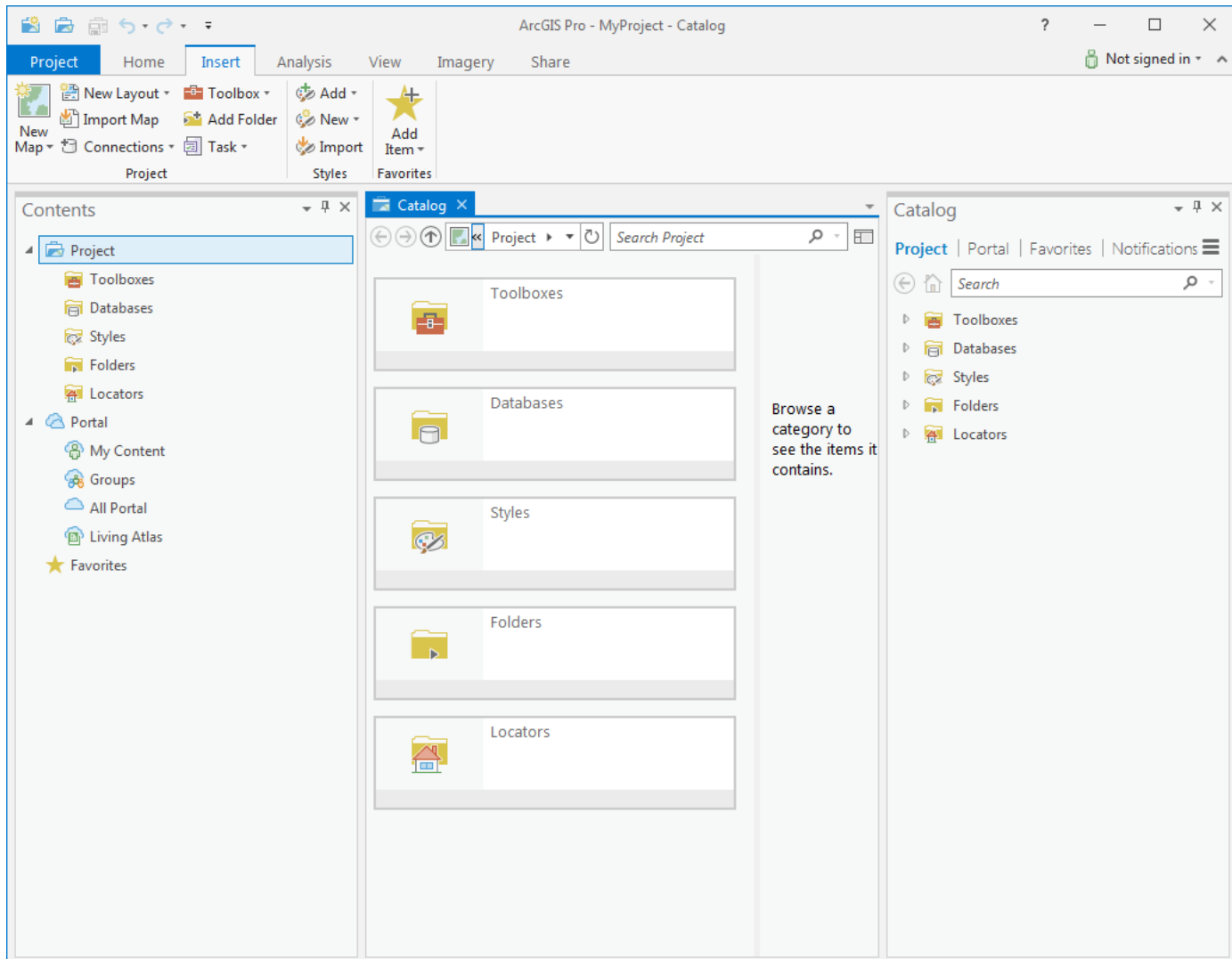


The ArcGIS Pro Interface

- ArcGIS Pro uses a horizontal ribbon across the top of the application window to display and organize functionality into a series of tabs.



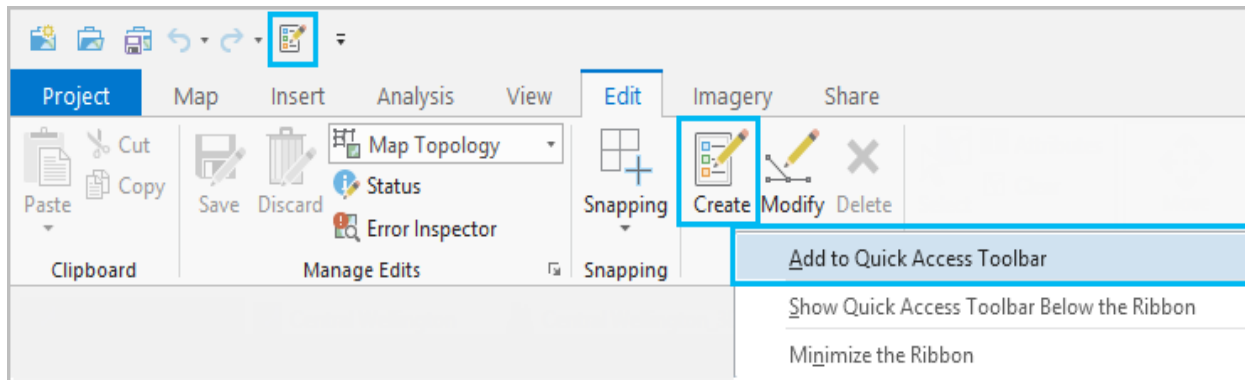
- A New Project



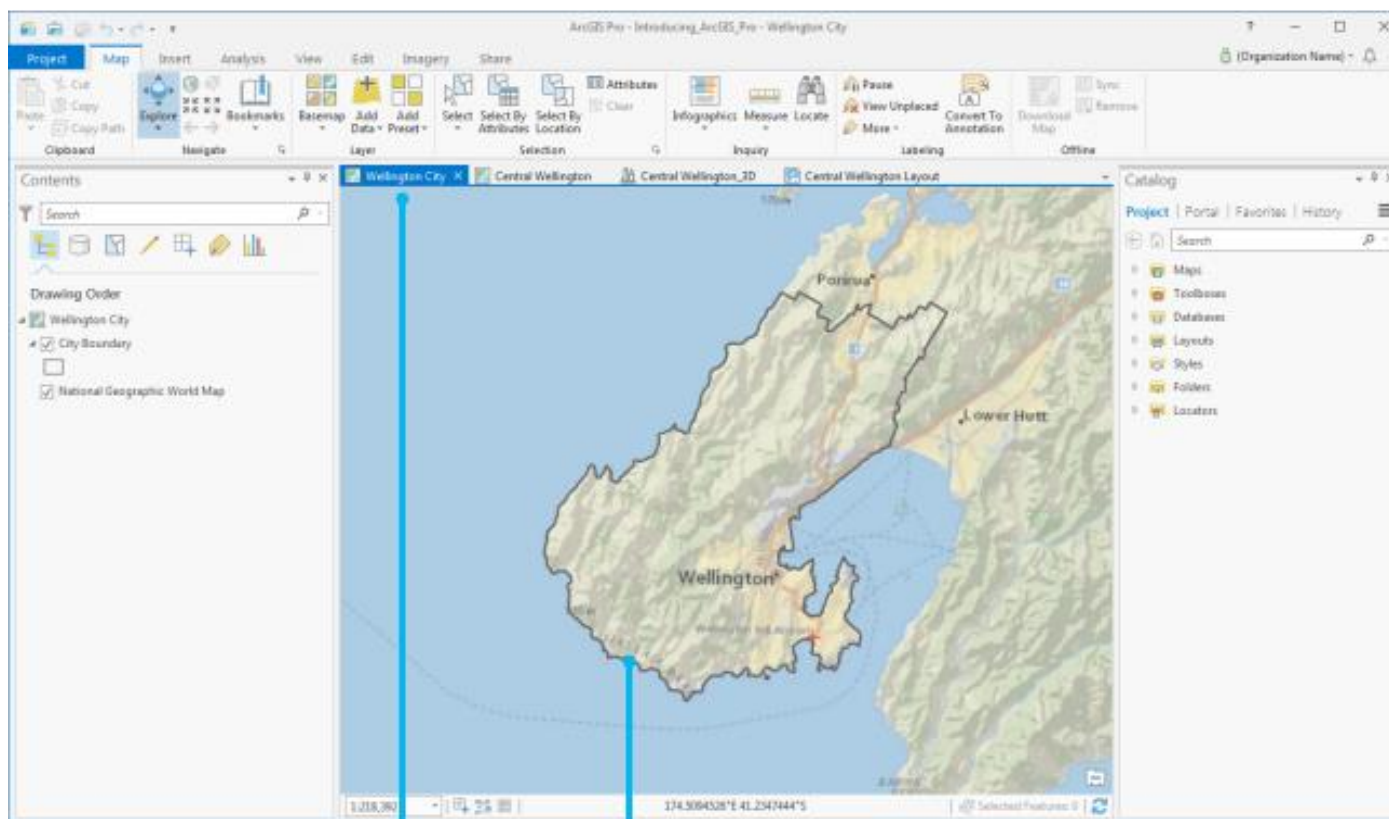
- The Quick Access Toolbar above the ribbon has buttons to save and open, or undo and redo changes to your project.



- You can [customize the ribbon](#), group tools you use most often, add or remove tools from the ribbon, or add tools to the Quick Access Toolbar.



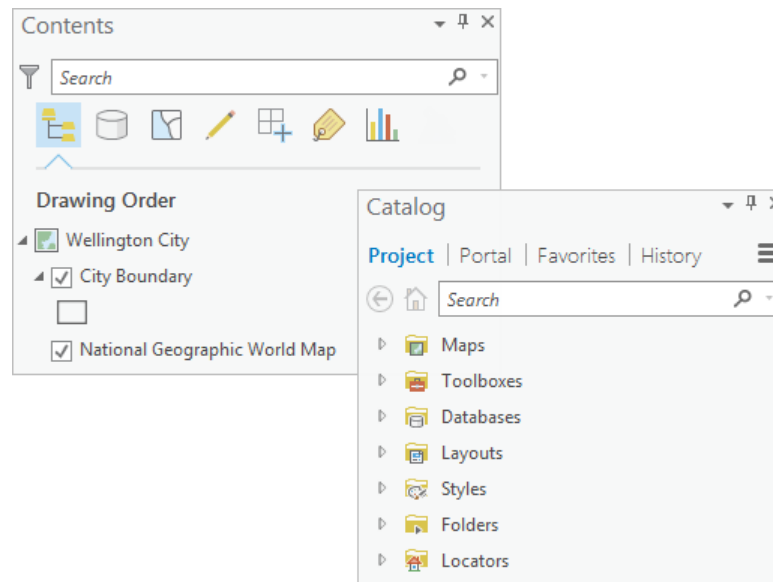
- A view is a window that represents the primary work area of the application and provides a visualization of your data.



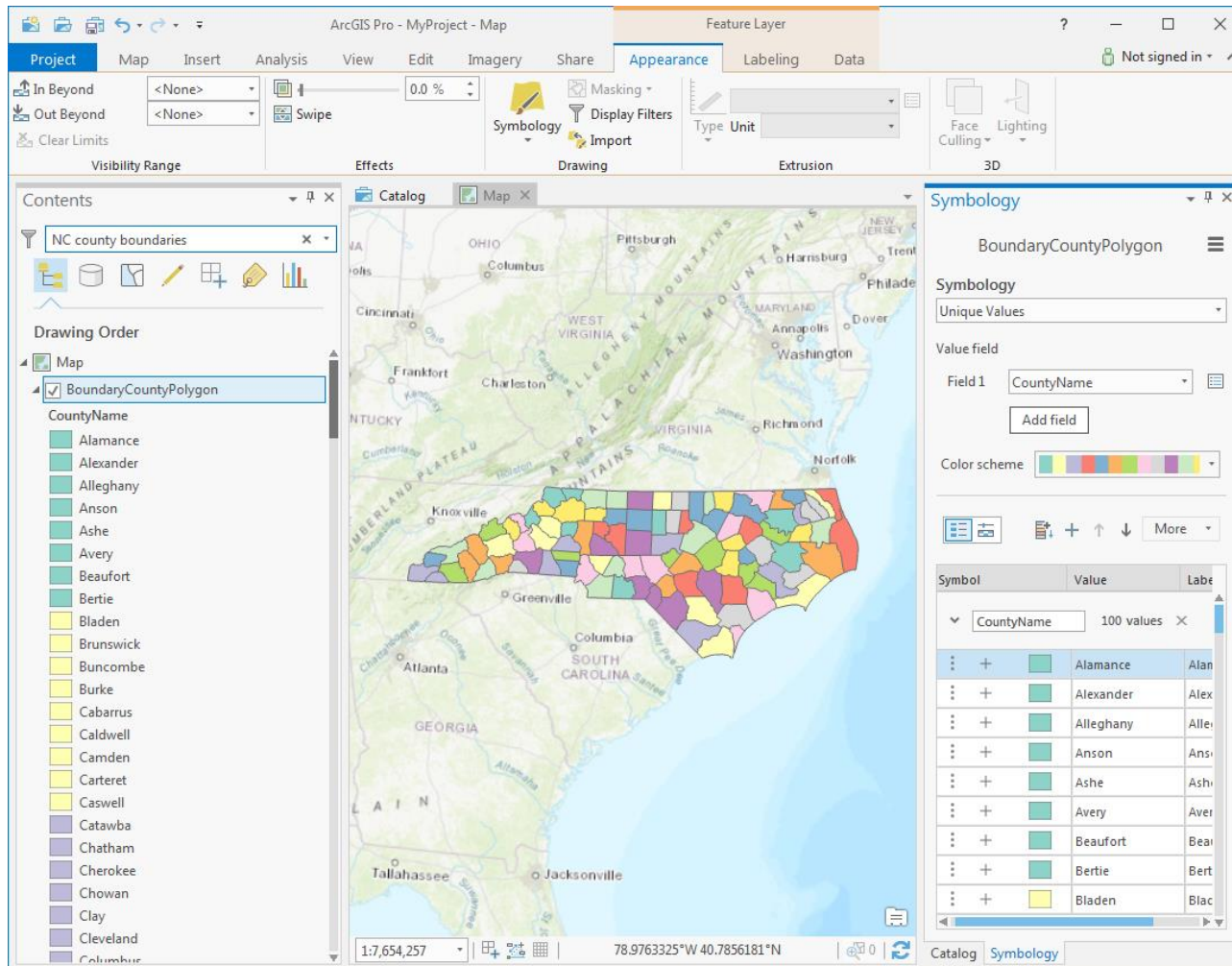
Active view tab

Map view

- A pane is a dockable window that contains commands and settings in addition to those available on the ribbon.
- You can find more commands and items within panes by using various controls.



- Although the look and feel has been changed, some options remain the same.



A few Pros & Cons

- Pros:
- ArcGIS Pro is the future of desktop GIS.
- ArcGIS is more “project based” than “map based”.
- Advanced integration with web GIS.
- Compatible with existing ArcMap documents.
- Faster drawing, better symbology

- Cons:
- ArcGIS Pro tends to use double the amount of memory.
- The functionality between Pro and ArcMap/Catalog is not 100% in place yet.
- Create, Edit or Display Personal Geodatabases.
- Version of Python used

Questions?

Thank you !