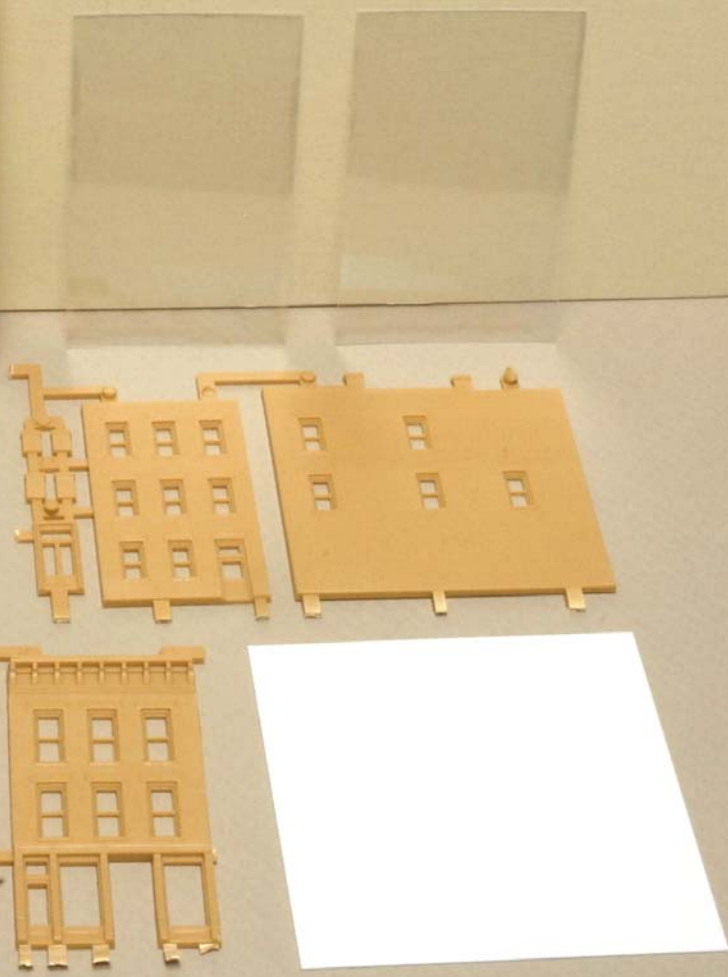
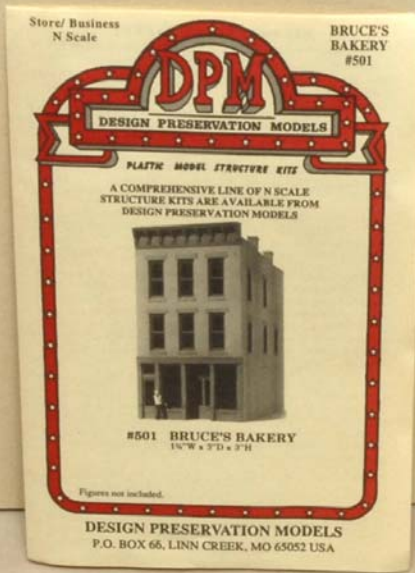


# DPM

getting the most out of the  
Design Preservation

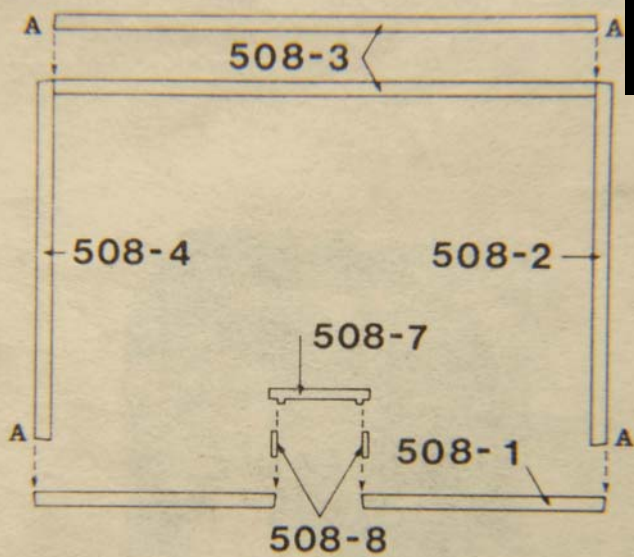


Models kits

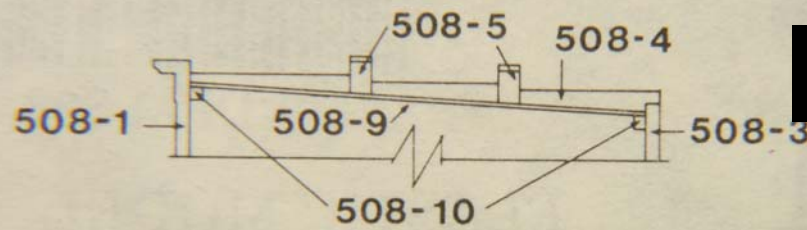


# The basic typical DPM kit contains:

- Instructions
- Glazing
- Four walls
- Other parts
- Sheet stock
- Strip stock

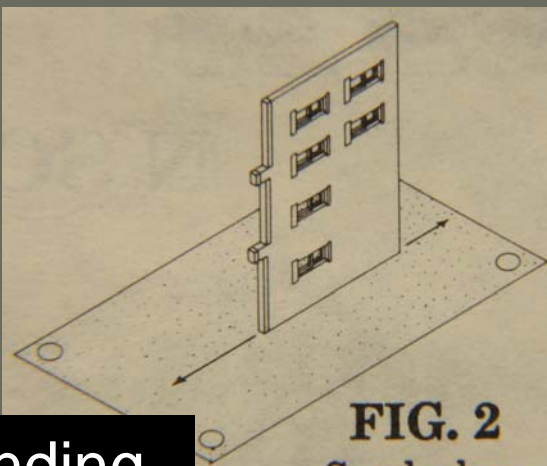


Footprint

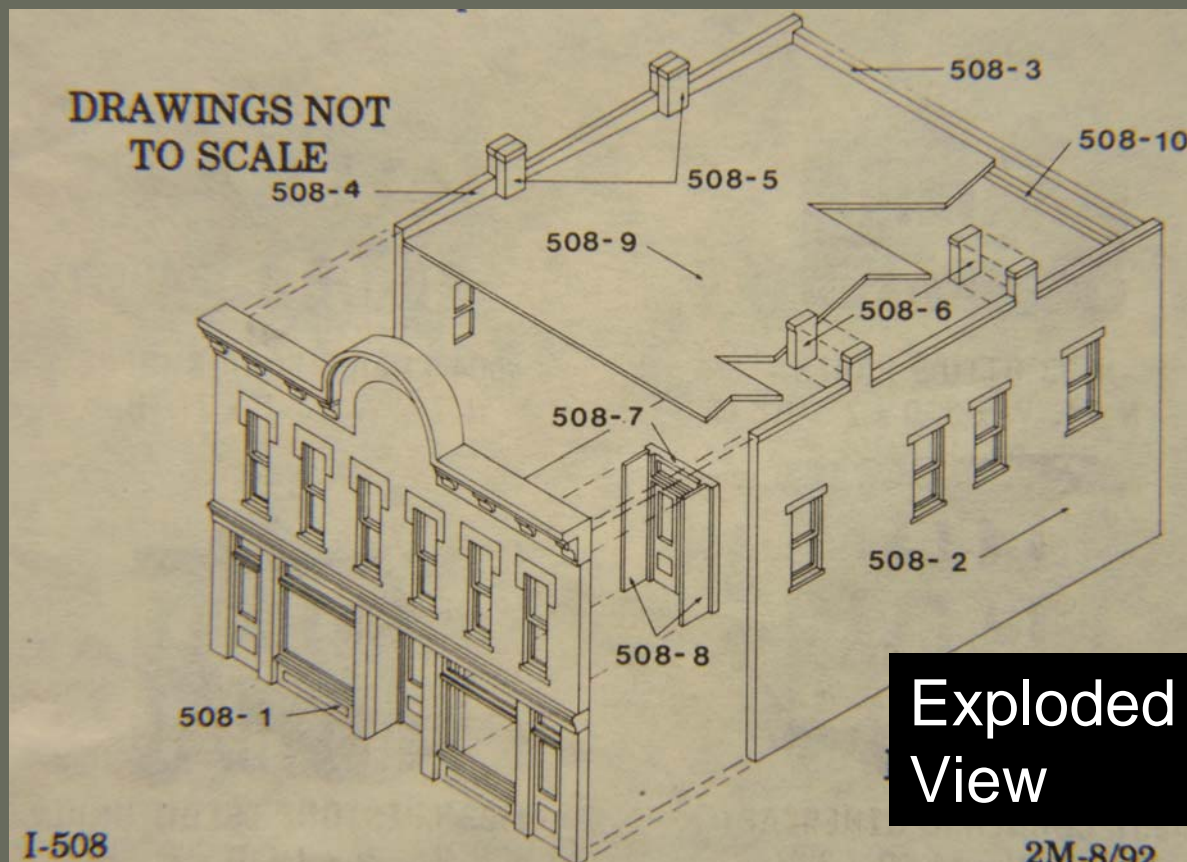


Roofing

FIG. 1  
Plan (view from top)



Sanding



# The basic DPM kit typically does not contain...

- Foundations
- Detail parts
- Tips for construction techniques
- Options for kit-bashing
- Painting, finishing & weathering instructions
- Suggestions for window treatments

# Styrene Solvents



# Enhancing the basic kit without substantial changes



## **BRUCE'S BAKERY is one of the smaller kits.**

- *Here, it is as pictured in the Walther's Catalog.*
- *With no basic changes in the footprint, the kit can be enhanced in several ways.*

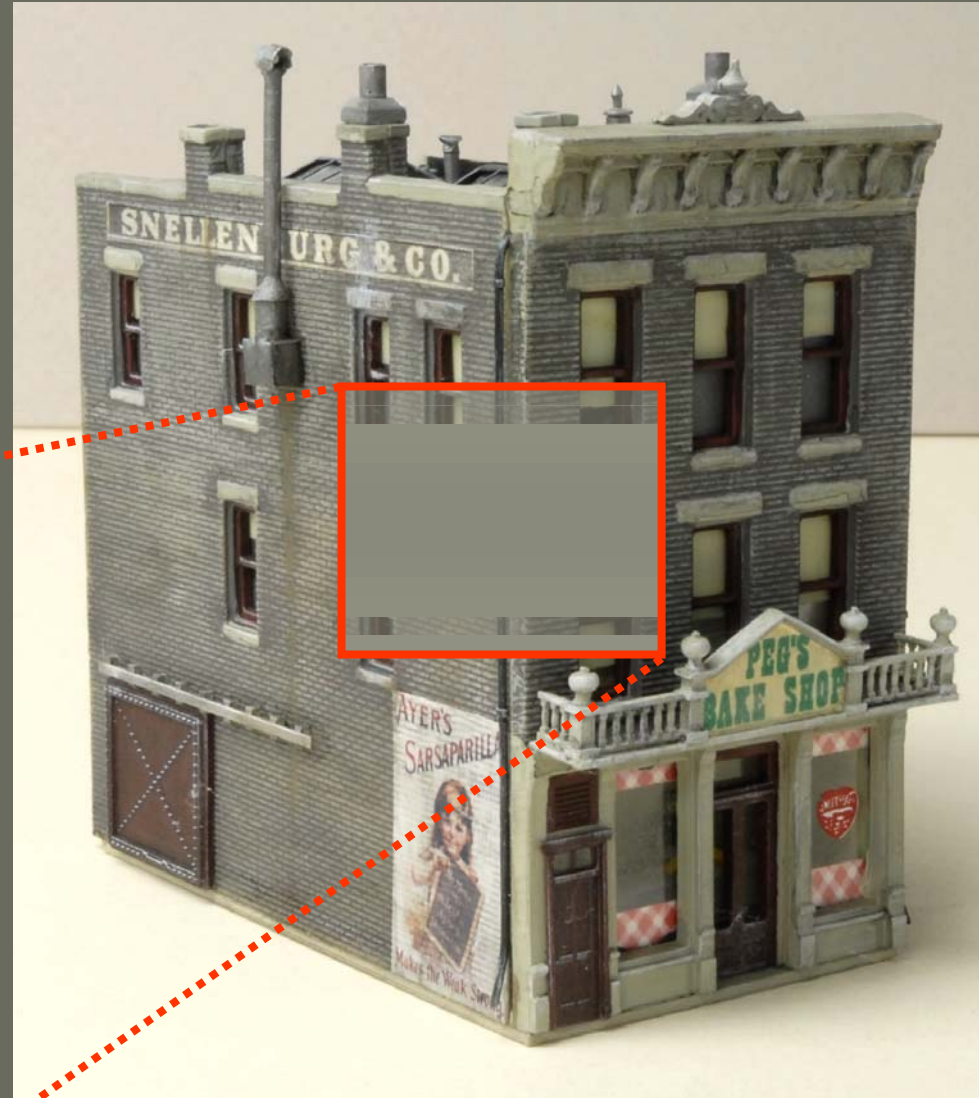
# Basic Painting

*First, the four sides were primed gray (automotive primer)*

*Then, the sides were give a heavy wash of Polly Scale Dark Gray mixed with Dirt.*

*When dry, fine grit sandpaper (300-400) was used to sand off the surface paint, leaving the dark gray in the brick striations for mortar joints.*

*Windows, headers, sills and trim were brush painted.*



# Left side details...

## Chimney top

*Simulating tin flashing for extended chimney*

## Vent pipe

*Use styrene square rod for the junction box*

## Roof drain

*Brass rod and wiring insulation for pipe couplers*

## Freight door

*Use styrene strip stock to construct the hanger*

## Signage

*Embossed*

## Foundation





# Front Details...

Cornice ornament

*White metal detail part*

Window shades

*Painted on the interior*

Balustrade & sign

*White metal detail part*

Dry transfers

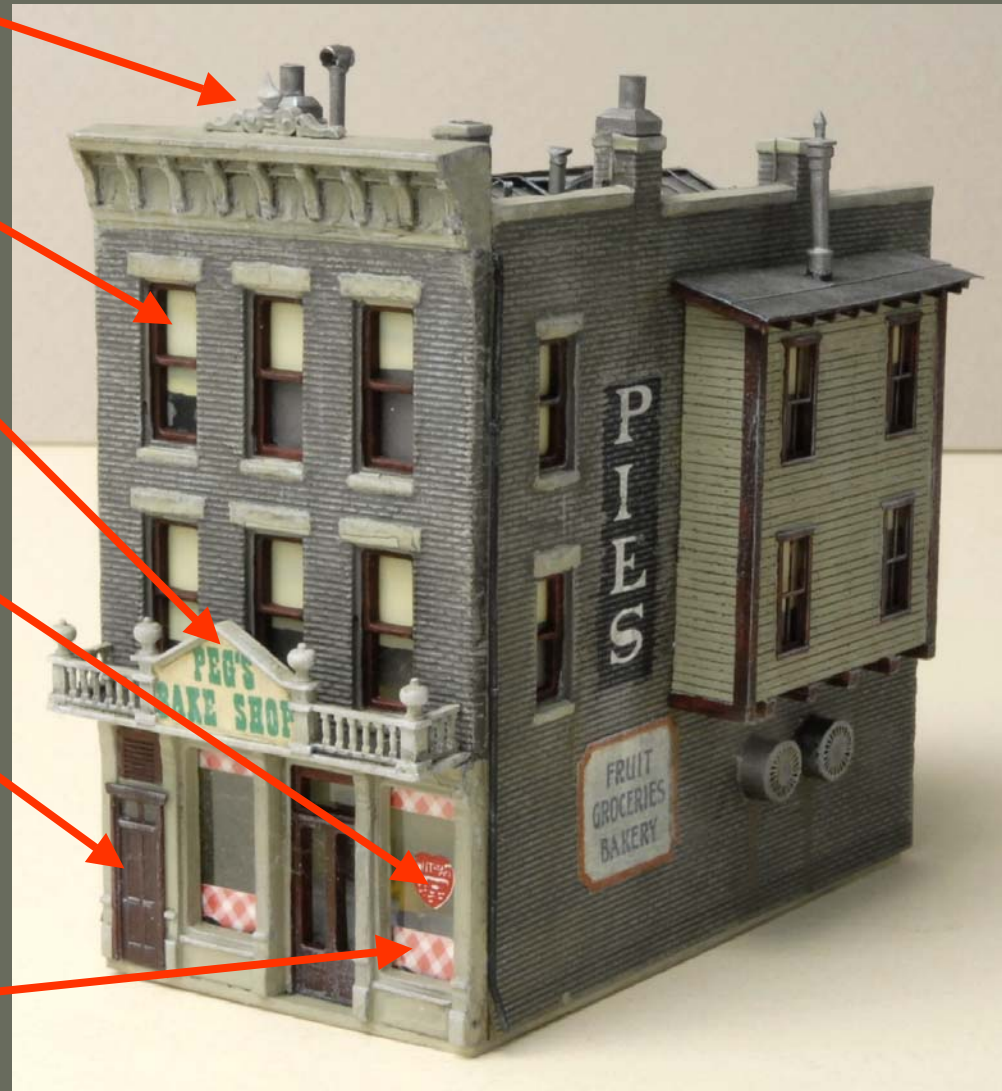
*Woodland Scenics*

New pedestrian door

*Use vent to block  
clerestory window*

Curtains

*Clipped from catalog*



# Right side details...

**Chimney top**

*Matches left side*

**Roof drain**

*Matches left side and  
hides seam*

**Scratch-built bay**

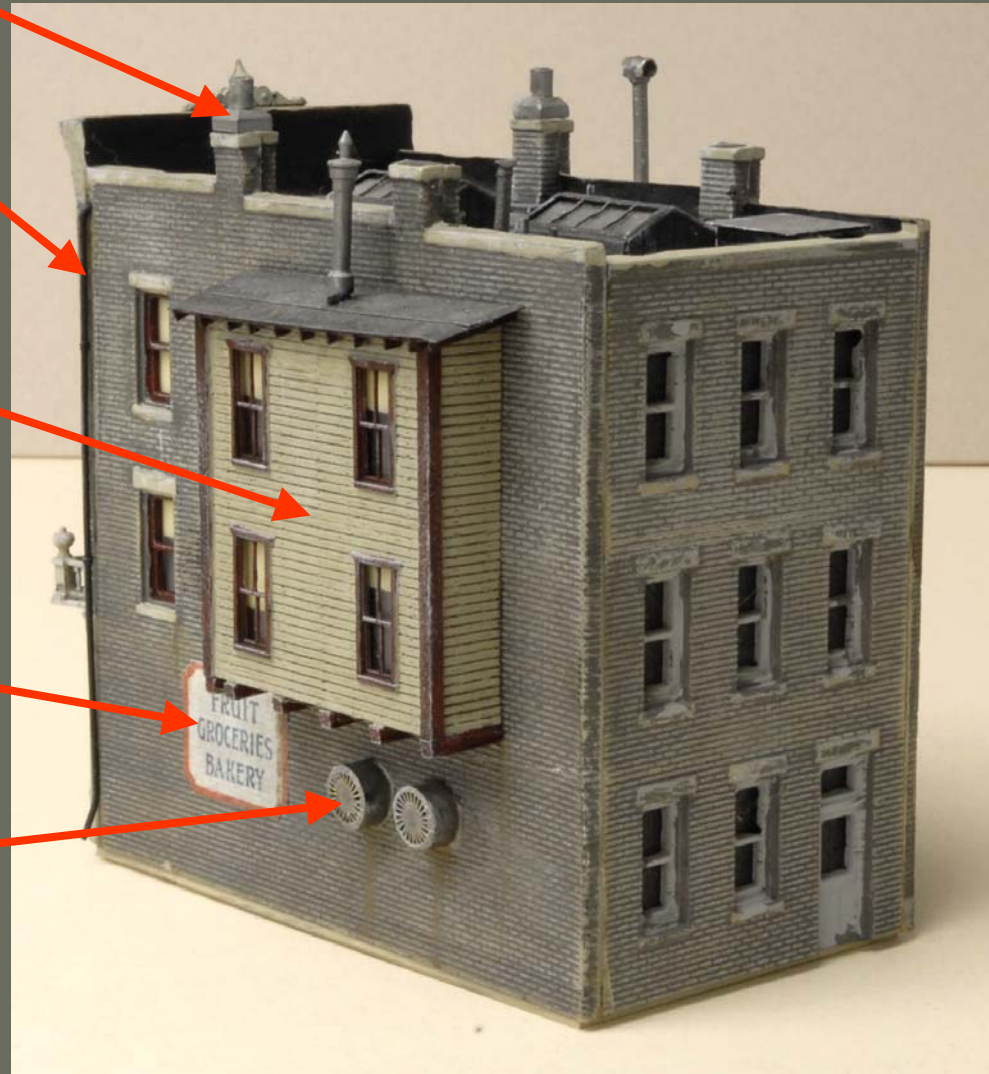
*Scribed basswood,  
Grandt Line windows,  
rafter ends, stove pipe*

**Sign**

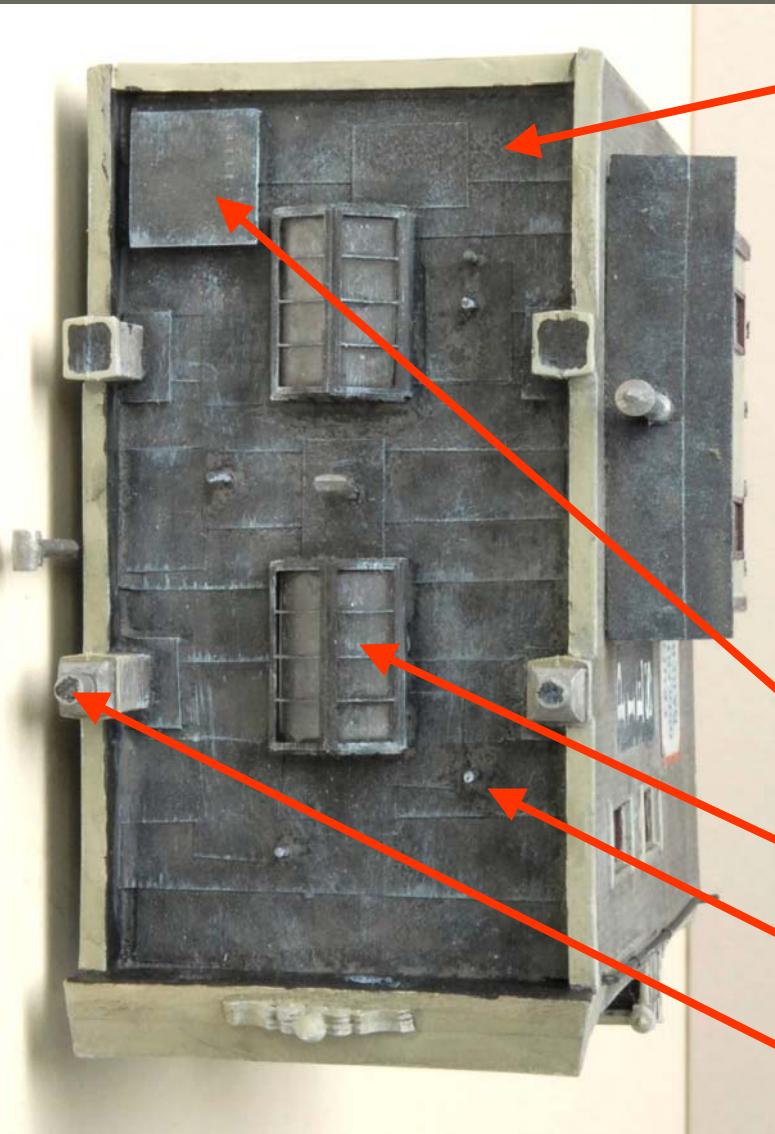
*Embossed*

**Kitchen blowers**

*Etched brass diesel fans  
and MacDonald's  
straws*



# Roof Details



## Simulated tarpaper

- *If the sub-roofing is styrene, laminate paper to it before installing rolled roofing strips*
- *Use grained paper for roofing strips*
- *Paint Grimy Black*
- *Dry brush with Light Gray*

## Access Hatch

## Etched brass skylights

## Roof vents

## Painted chimney holes

# Finishing Tips

Once all the construction and painting is complete, float a final coat of alcohol/ink mixture over the whole structure to tie everything together.

Dry-brush the window sills and door frames with Light Gray Polly Scale paint.



# Another Kit with Minimal Changes



## ADDED DETAILS

- *Window displays*
- *Main entrance sign (Bar Mills)*
- *Painting variations*
- *Roof gizmology*

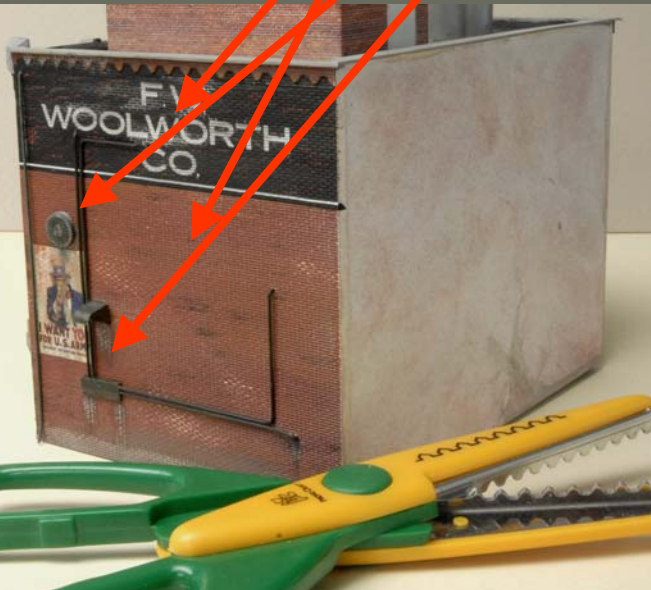
## ADDITIONAL DETAILS

*Substituting the windowed ends for solid wall ends, since on my layout this structure would not function as a corner building*

*Signage*

*Extra plumbing, conduit, blower, vents and drains—plus cornice gingerbread*

*Roof access and roof "gizmology"*



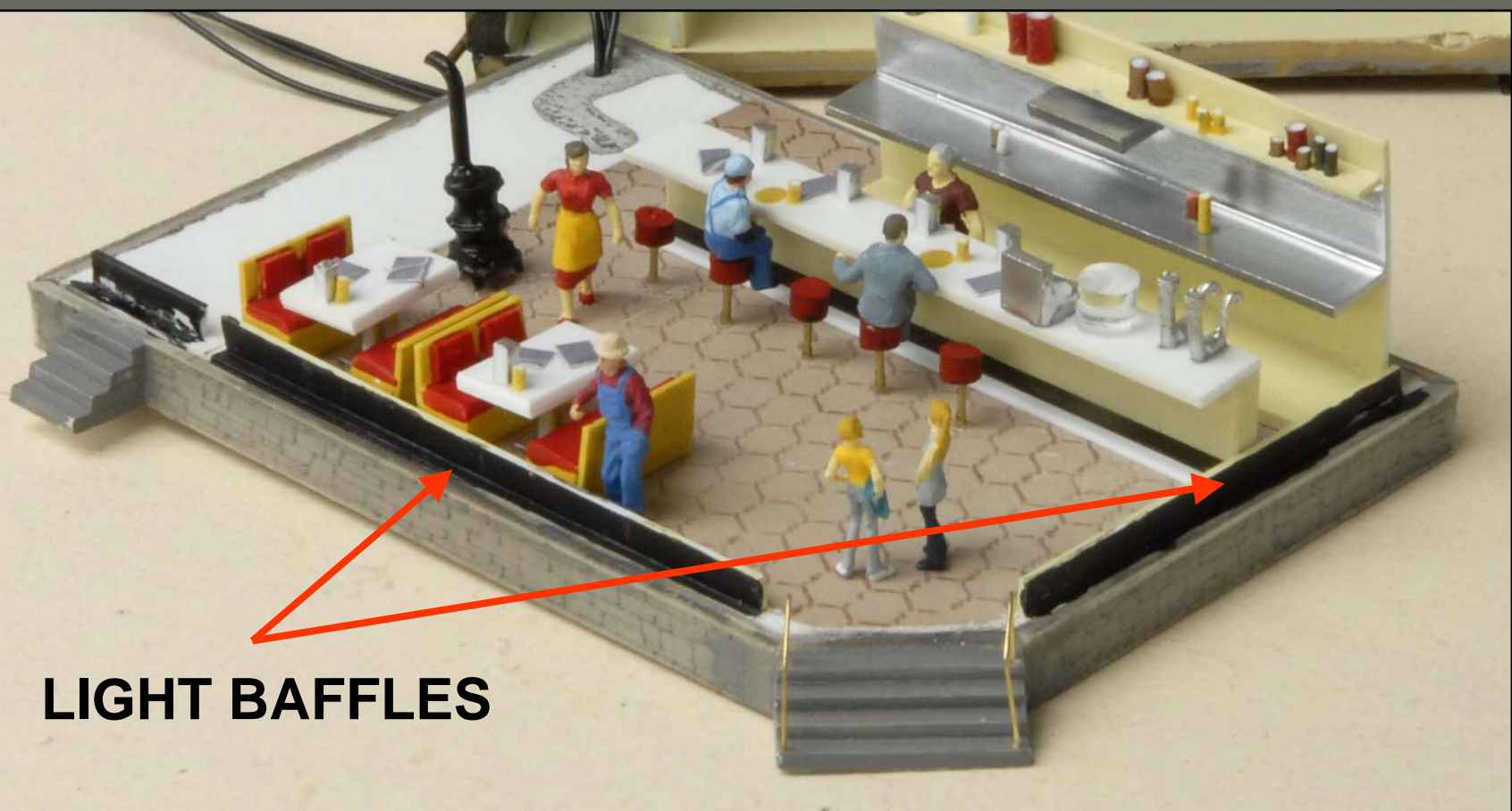
# Super-detailing an Interior



## CORNER TURRET BUILDING

*Besides an added foundation, steps and other detailing, the primary distinction is an elaborately detailed interior.*





## LIGHT BAFFLES

Besides the scratch-built interior, it is critically important to create baffles to eliminate light leaks between the shell and the foundation.





# Night scene of café

*A well-lighted building with lots of windows makes for great “eye candy” in a night scene*



# Source for Period Signage

## Desperate Enterprises catalogs






**New Image!**

Case Tractor Tribute  
 Cat.# 877 12¾"W x 16"H



Farmall Sold Here  
 Cat.# 26 16"W x 11½"H



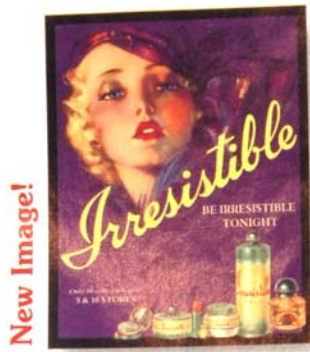
Farmall M  
 Cat.# 825 16"W x 12½"H



Ford Farming 8N  
 Cat.# 758 16"W x 11½"H



Ford Golden Jubilee  
 Cat.# 699 16"W x 10½"H



Irresistible  
Cat.# 863 12½"W x 16"H



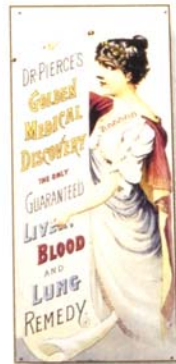
Mennen's Toilet Powder  
Cat.# 10 13"W x 16½"H



Ayer's Mother w/ Child  
Cat.# 413 10½"W x 16"H



Pearline Soap - Boy w/poster  
Cat.# 380 10¾"W x 16"H



Dr. Pierce's Golden Discovery  
Cat.# 370 7¼"W x 16"H

Desperate Enterprises,  
Inc.

728 Smith Rd.  
Medinia, OH 44256

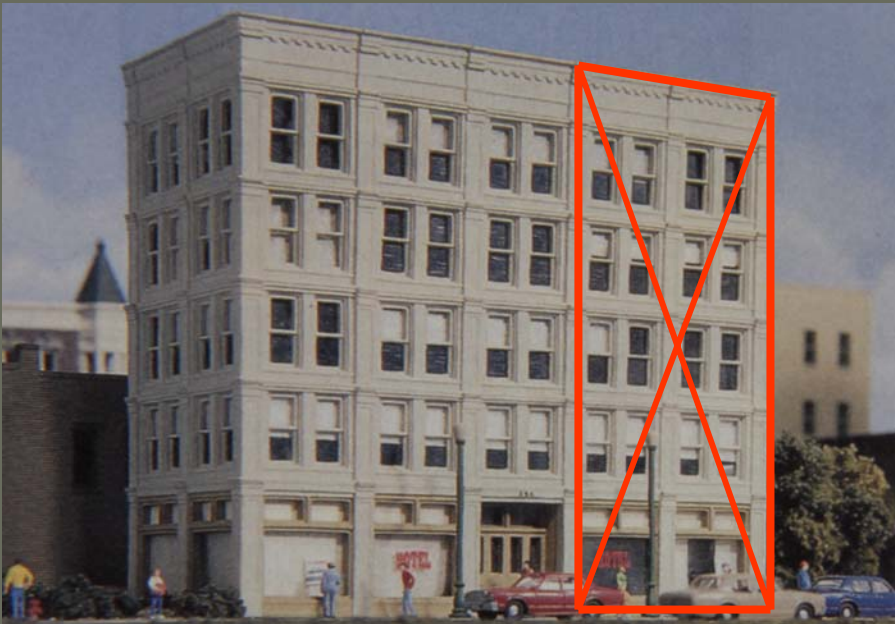
[www.desperate.com](http://www.desperate.com)

(800) 732-4859

# Cutting Up a Kit

## HILLTOWNE HOTEL

- *Medium sized kit as pictured in Walther's Catalog*
- *This kit can be either reduced or enlarged, depending upon space available.*
- *First, we will saw off one end.*



# Reduction

## Cutting

*To cut off bays, use repeated scores with a hobby knife or use a small razor saw.*

## End Wall

*Here, because the end of the hotel would be butted against another structure, I elected to use styrene sheet for the end wall and paint it black.*



# Painting

## Exterior

*Using spray bombs (gray primer, flat black, flat white) I misted the colors into each other and allowed them to bleed.*

*I brush painted the window trim.*

## Interior

*I painted the interior flat black (to seal light leaks from interior lighting) before wallpapering the lobby walls.*



# Frontside Details

## Sign

*Scratch-built*

## A/C units

*For premium rooms only*

## Window Shades

*Tan paper*

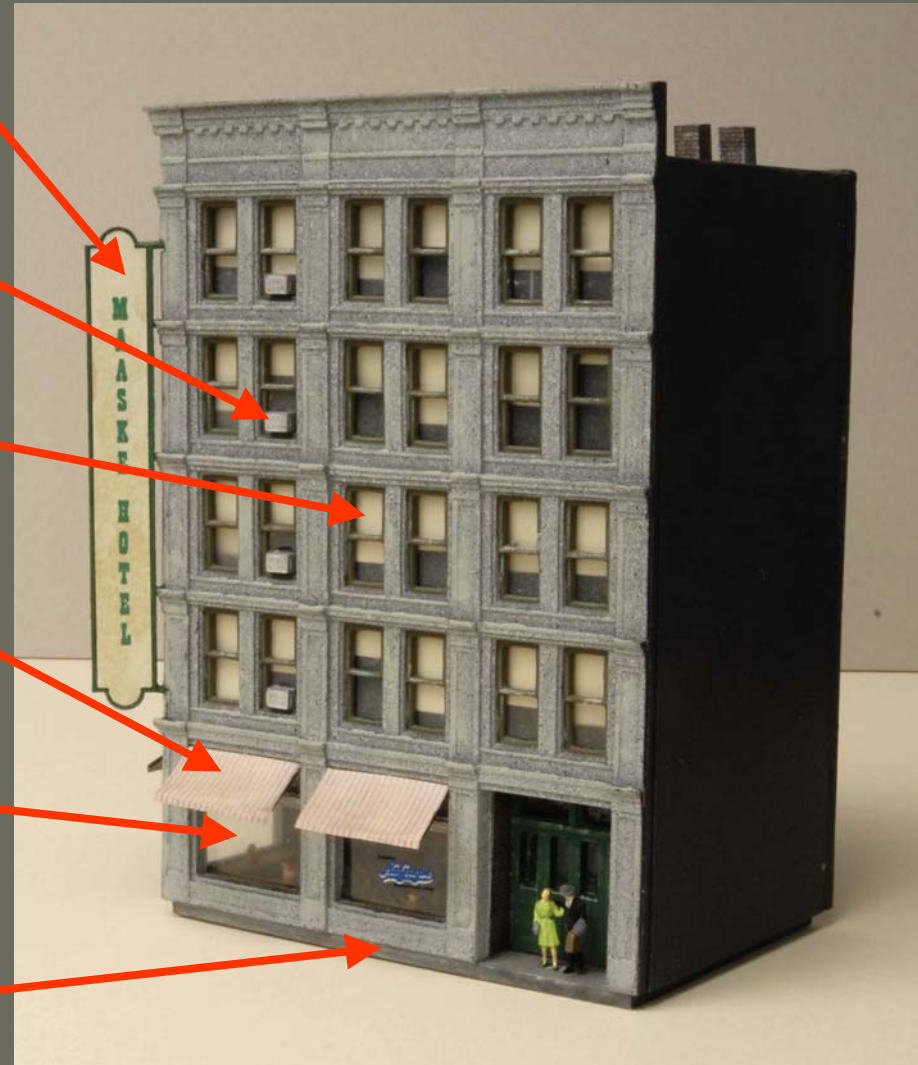
## Awnings

*Clipped from clothing catalog*

## Lobby Interior

*Counter, people, flowers*

## Foundation

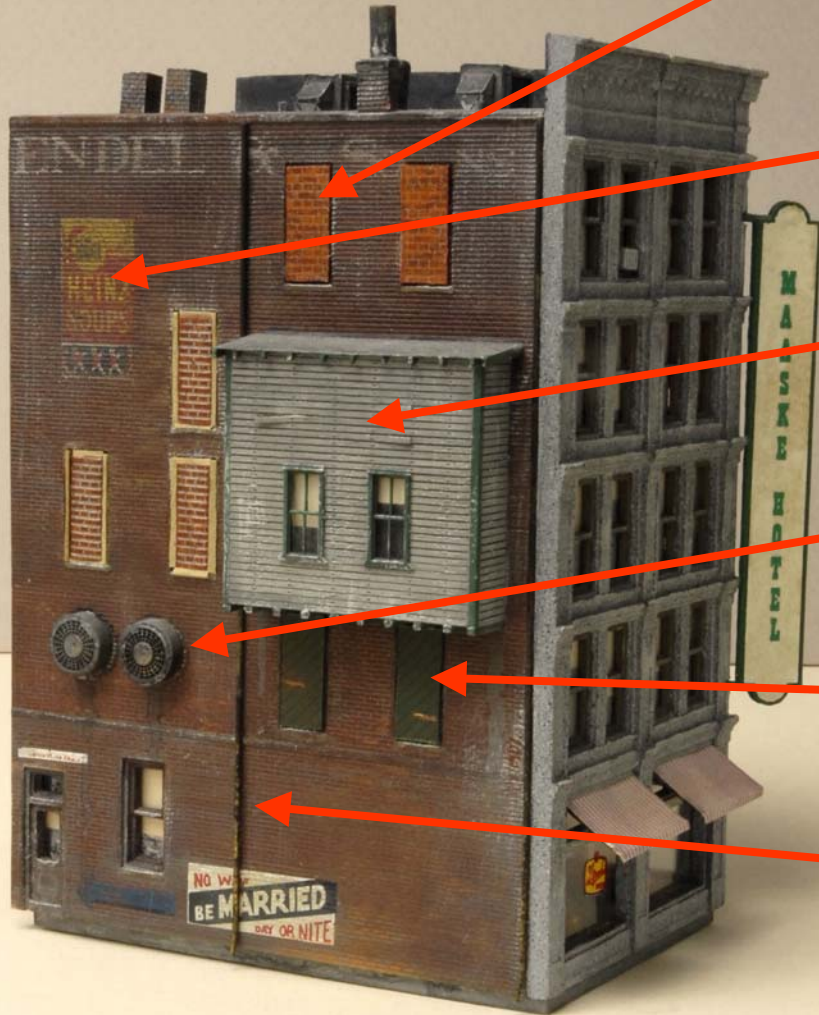


Block out  
some  
windows to  
simulate  
unoccupied  
rooms





# Backside Details



## Bricked windows

*Different bricks suggest later additions*

## Signage

*Dry transfers*

## Bay window

*Scratch-built from wood*

## Blowers

*Diesel grills & straws*

## Shuttered windows

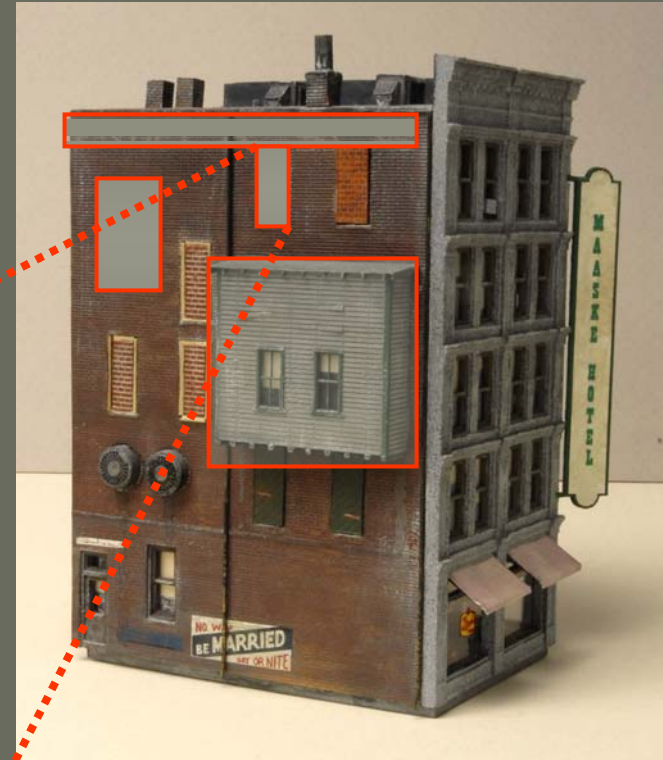
*From the scrap box*

## Drain pipe

*Brass rod with gun blueing*

# Finishing Tips

Weather over signs  
and lettering



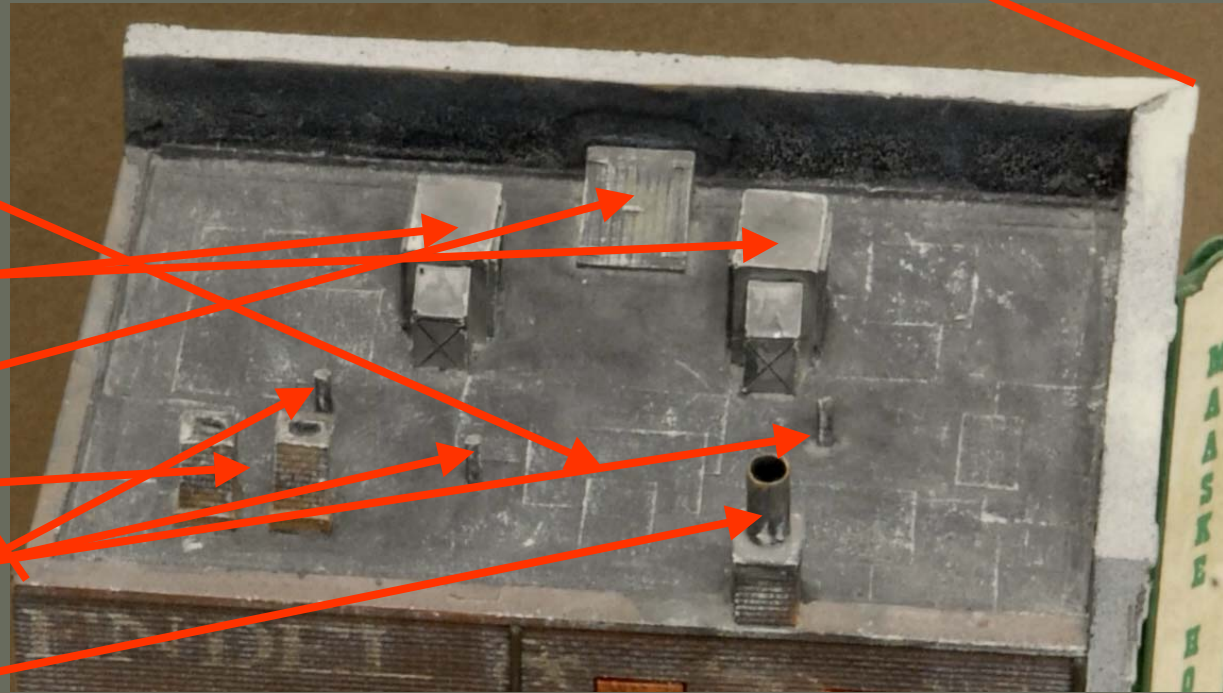
Vary brick color

Use a chisel blade to lift up  
“loose” boards; use a pounce  
wheel to make nail indentations



# Roof Details

Dry-brushing emphasizes form and illuminates details; it simulates light that bounces off of sharp edges



Patched roofing

A/C units

Access trap door

Chimneys

Vents

Chimney extension



MONTANA POWER CO

EMERALD CAFE

1931

191  
25

Wagon

# Enlarging the Kit

**This hotel lends  
itself to  
making a large  
city building  
by combining  
several kits.**

- *The cornice on each front should be cut off (except the top one)*
- *Reinforce the inside walls with square strip styrene*



# Expanding the Basic Kit

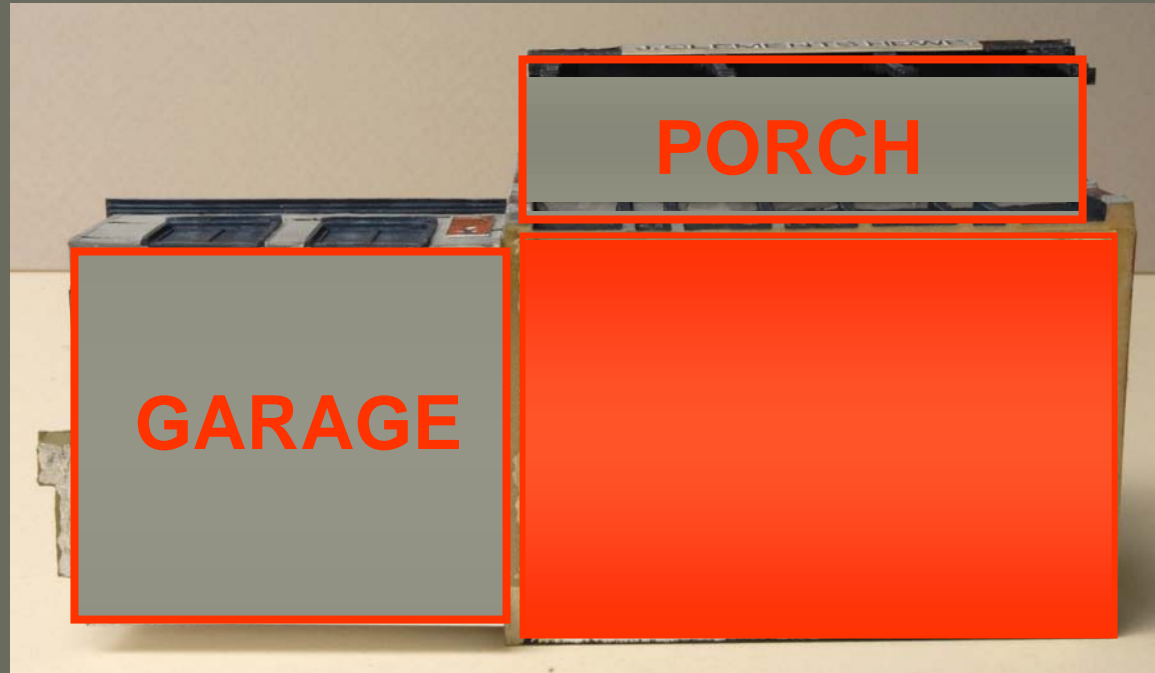


## ERIK'S EMPORIUM

- *Here, pictured in the Walther's Catalog*
- *By adding scratch-built extensions on the front and left side, the character of the building will be changed significantly.*

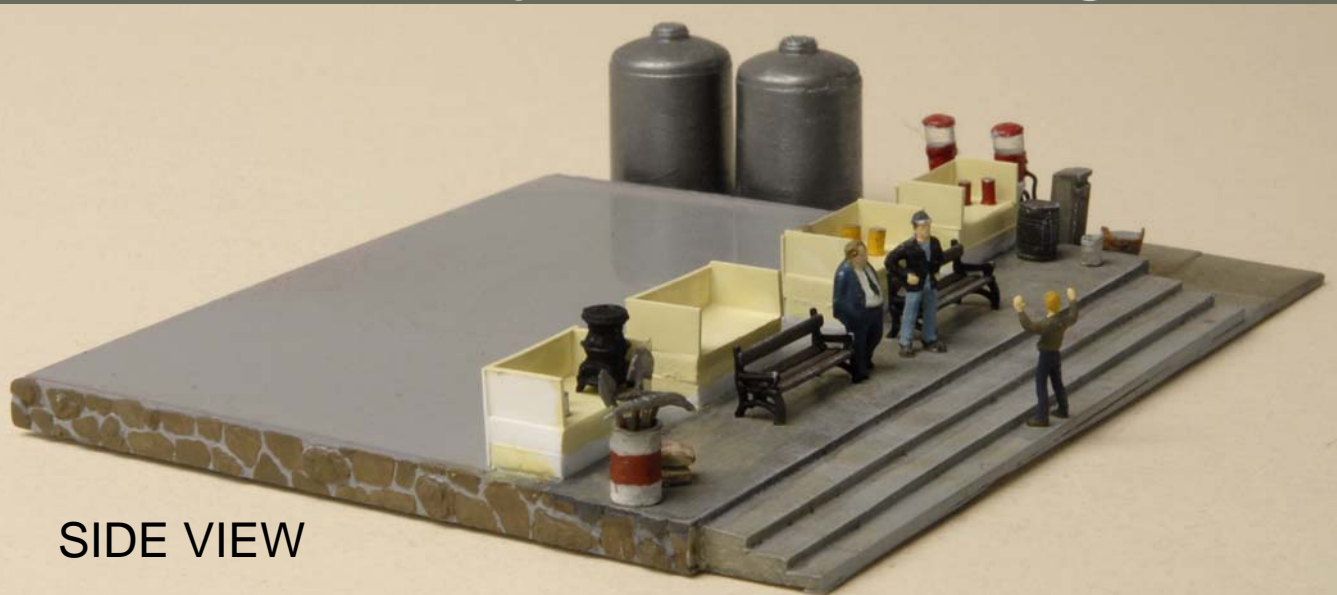
Viewed from the bottom, you can see the porch extension on the front of the structure and the garage extension to the side.

## Expanded Footprint



# Foundation

*The kit walls may be built as designed.*



**SIDE VIEW**

Porch steps and a foundation can then be constructed from layers of styrene sheet stock to fit the building shell.

Interior window displays can be scratch-built on the foundation base.

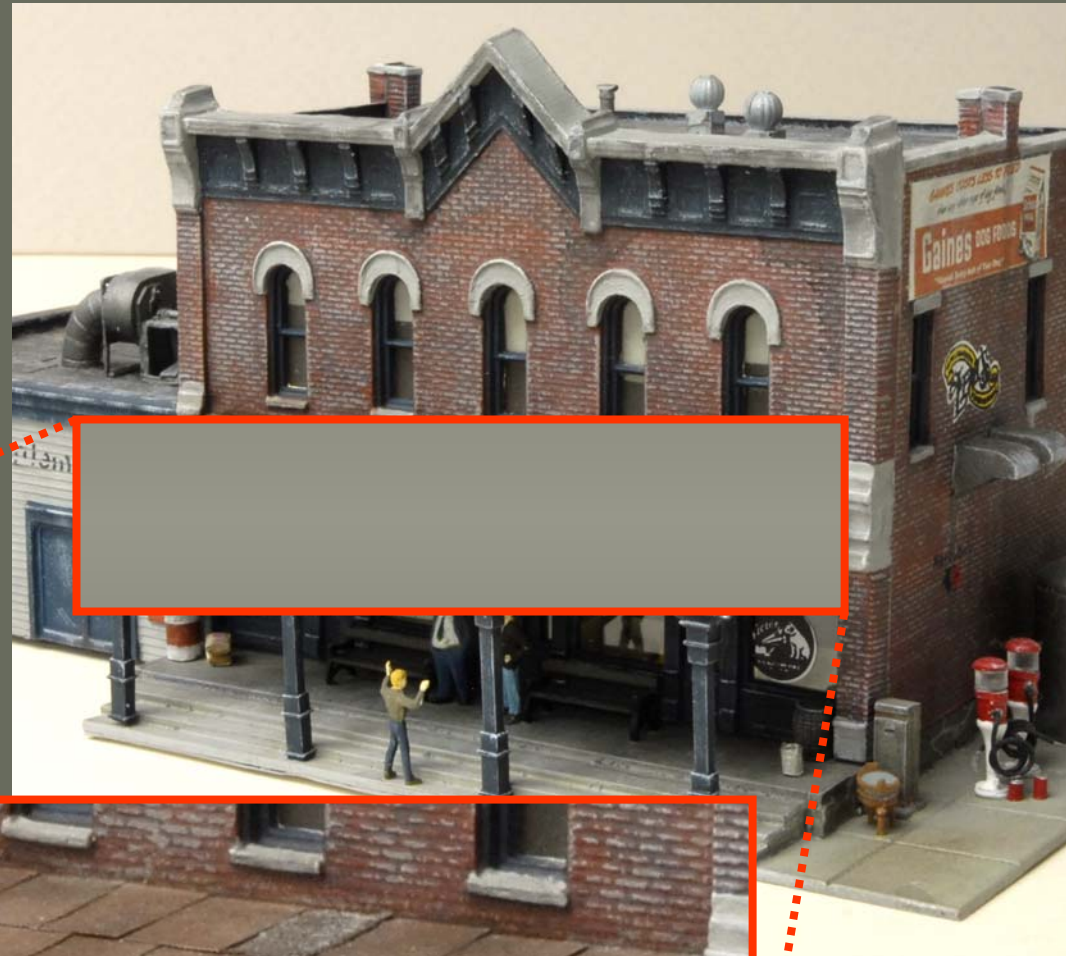


**FRONT VIEW**



# The Porch

- Acid etched corrugated roofing (Archer's Etchant)
- Dry transfer sign
- White metal porch posts



# STYRENE SCRATCH- BUILT GARAGE

*Squirrel cage  
roof blower*

*Simulated  
tarpaper roof*

*Commercial  
doors and  
windows*





ELECTRICAL & PLUMBING

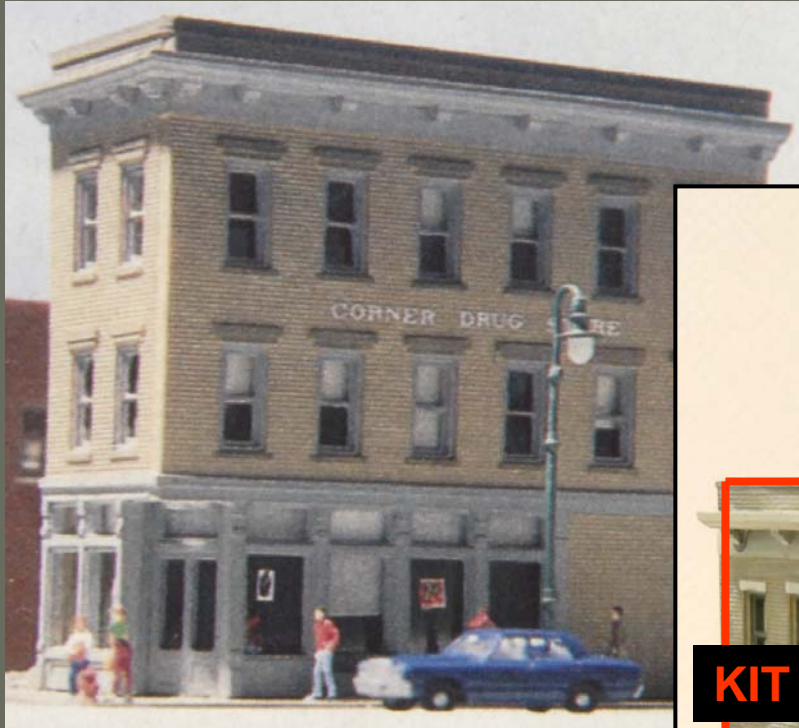
tools & implements

J. CLEMENTS HDV E.

Grimes

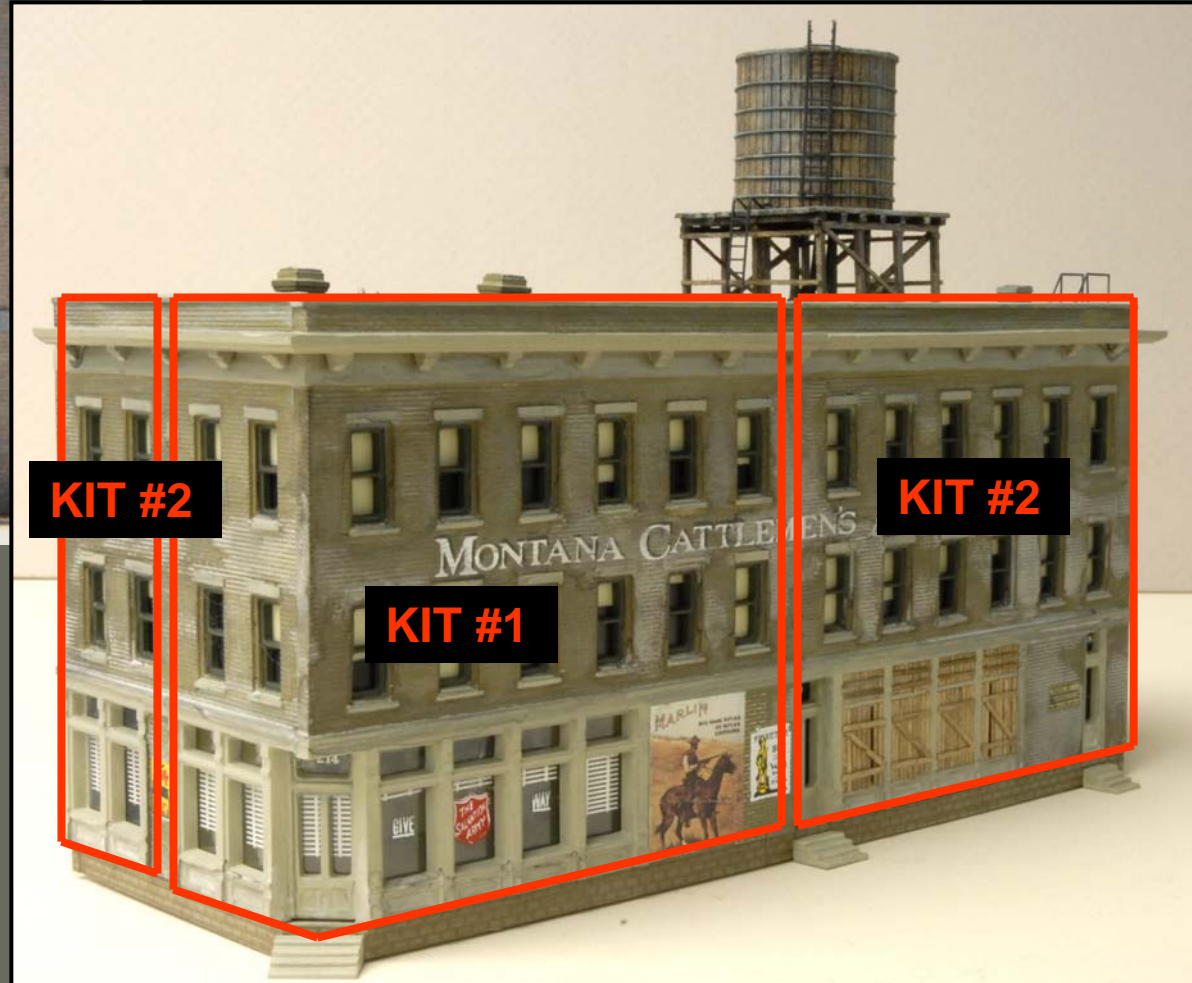
# Doubling a Kit

*This kit lends itself to doubling by joining two kits side by side and extending the sides*



**CORNER  
APOTHECARY**

*As shown by Walthers*



# Special Treatments

Scratch-built  
water tank

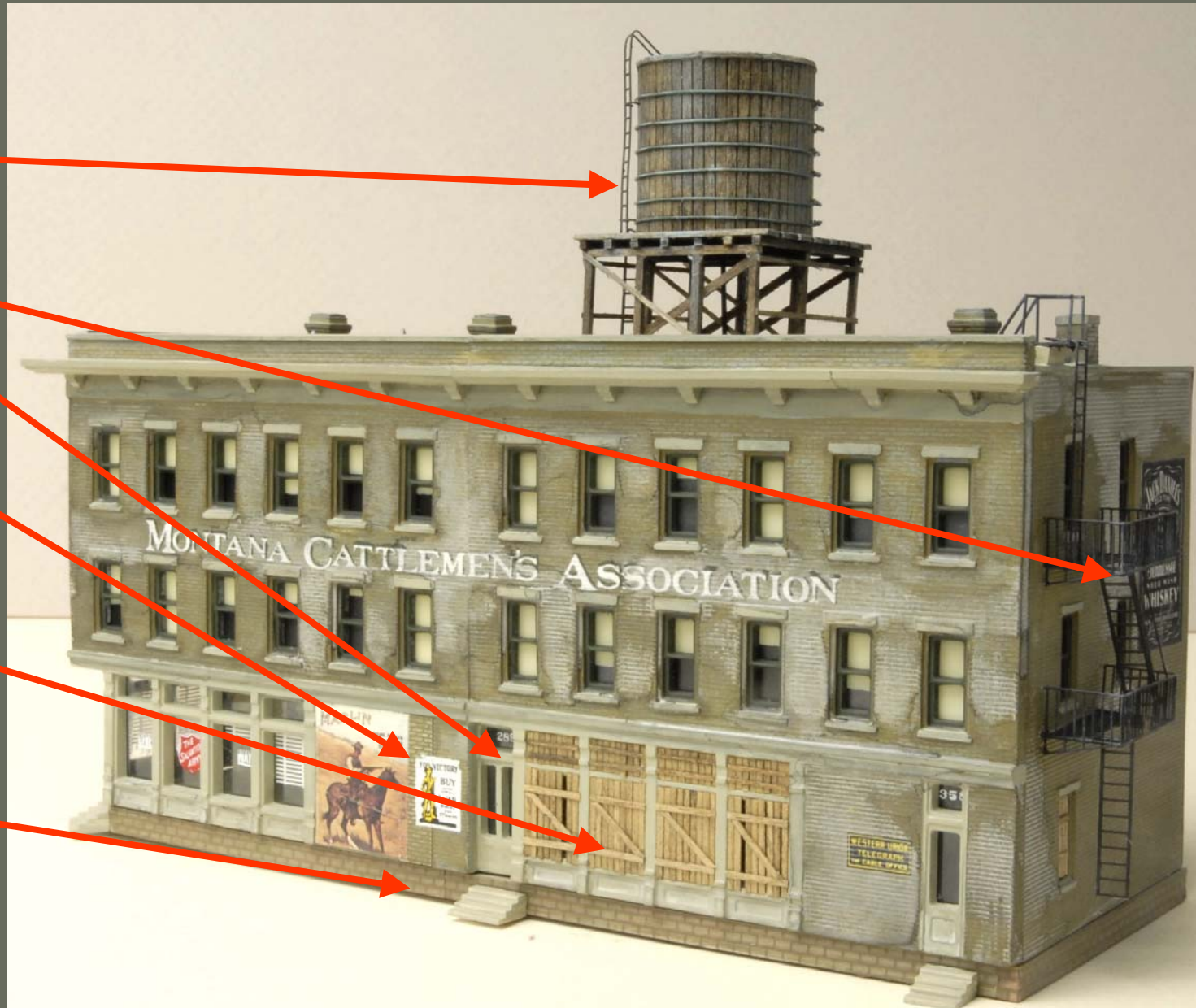
Fire escape

New doorway

Blocked  
doorway

Boarded  
windows

Foundation  
and steps



# ROOF DETAILS

*Chimneys and vents (since this structure would not be visible from the rear, I elected use sheet styrene for the back)*





OLD STORAGE

F.W.  
WOOLWORTH

MONTANA CATTLEMENS ASSOCIATION

WANT YOU  
FOR U.S. ARMY

MARLIN

JACK DANIELS  
OLD No. 7  
WHISKEY

Swiss Premium  
DRESSED MEATS

tool

# More Extensive Kit-bashing

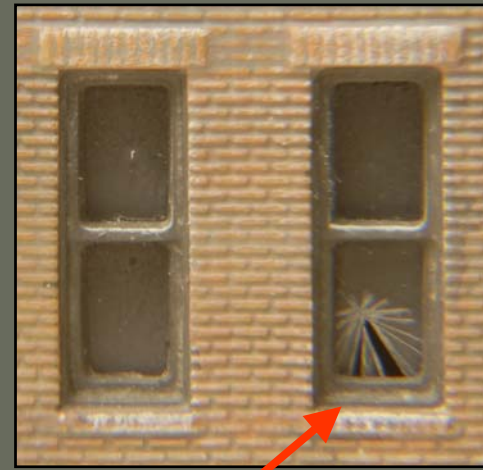
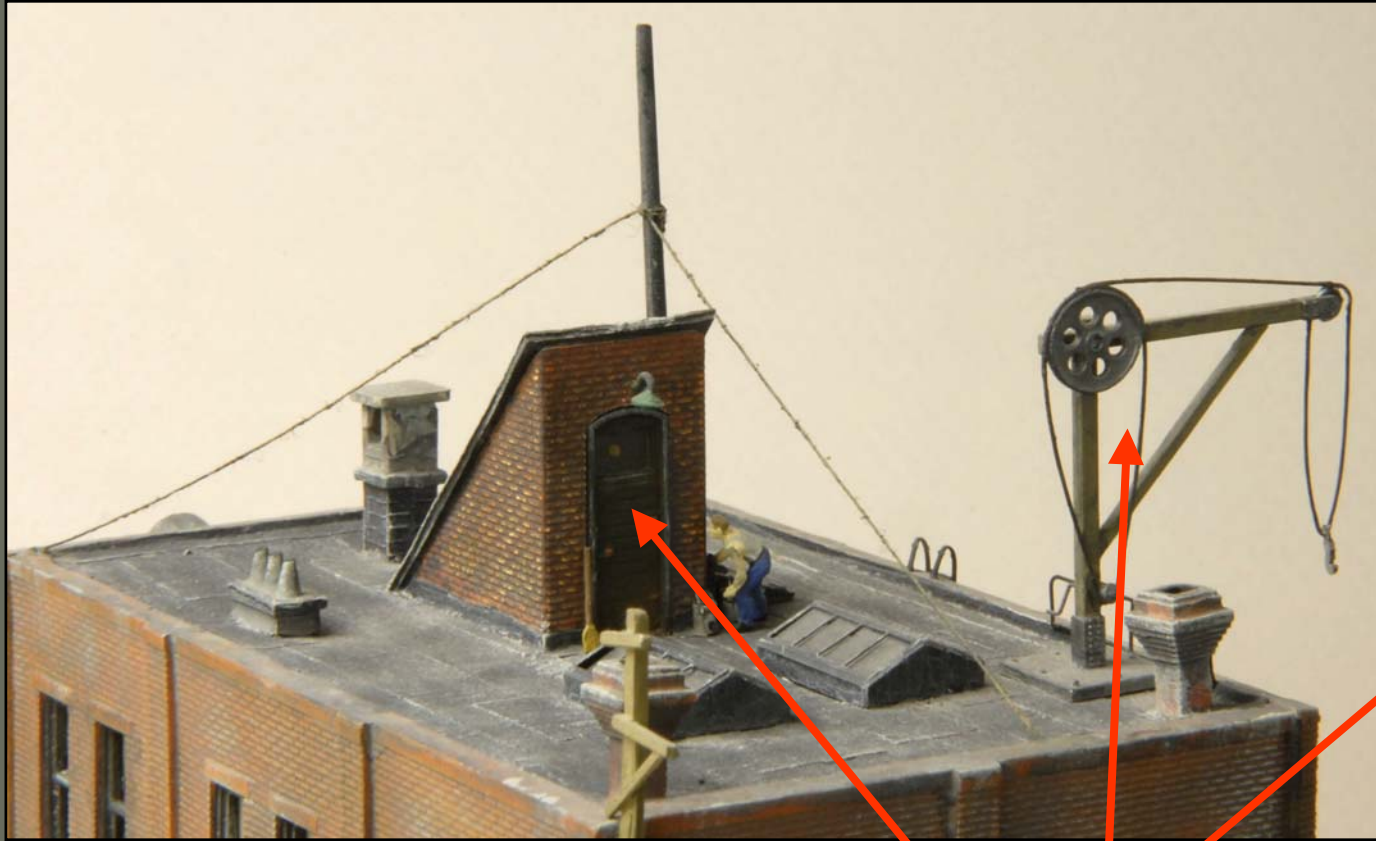


## GRIPP'S LUGGAGE

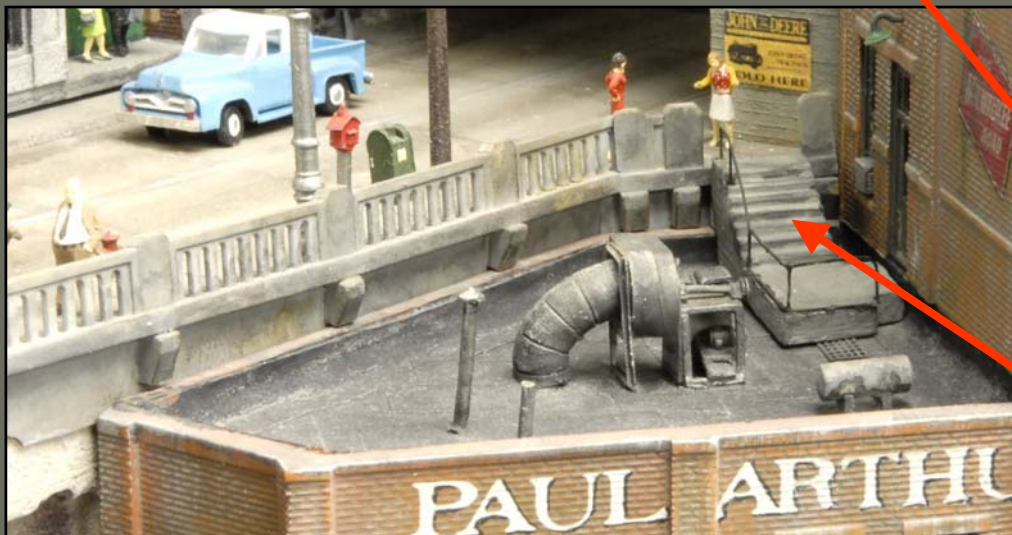
*Because of the complexity of the kit-bash, photocopy the kit sides so the details can be worked out in advance using paper copies.*







# Added Details



- *Broken window pane*
- *Roof stairway access*
- *Roof crane*
- *Upper level street access*



I added an extensive scratch-built icing platform and cut in a special door for the icing conveyor.



Tougher to the Point  
TOP QUALITY  
SEE YOUR GENERAL TIRE DEALER  
THE ONLY TIRE DEALER

ARTHUR'S STORAGE & ICE

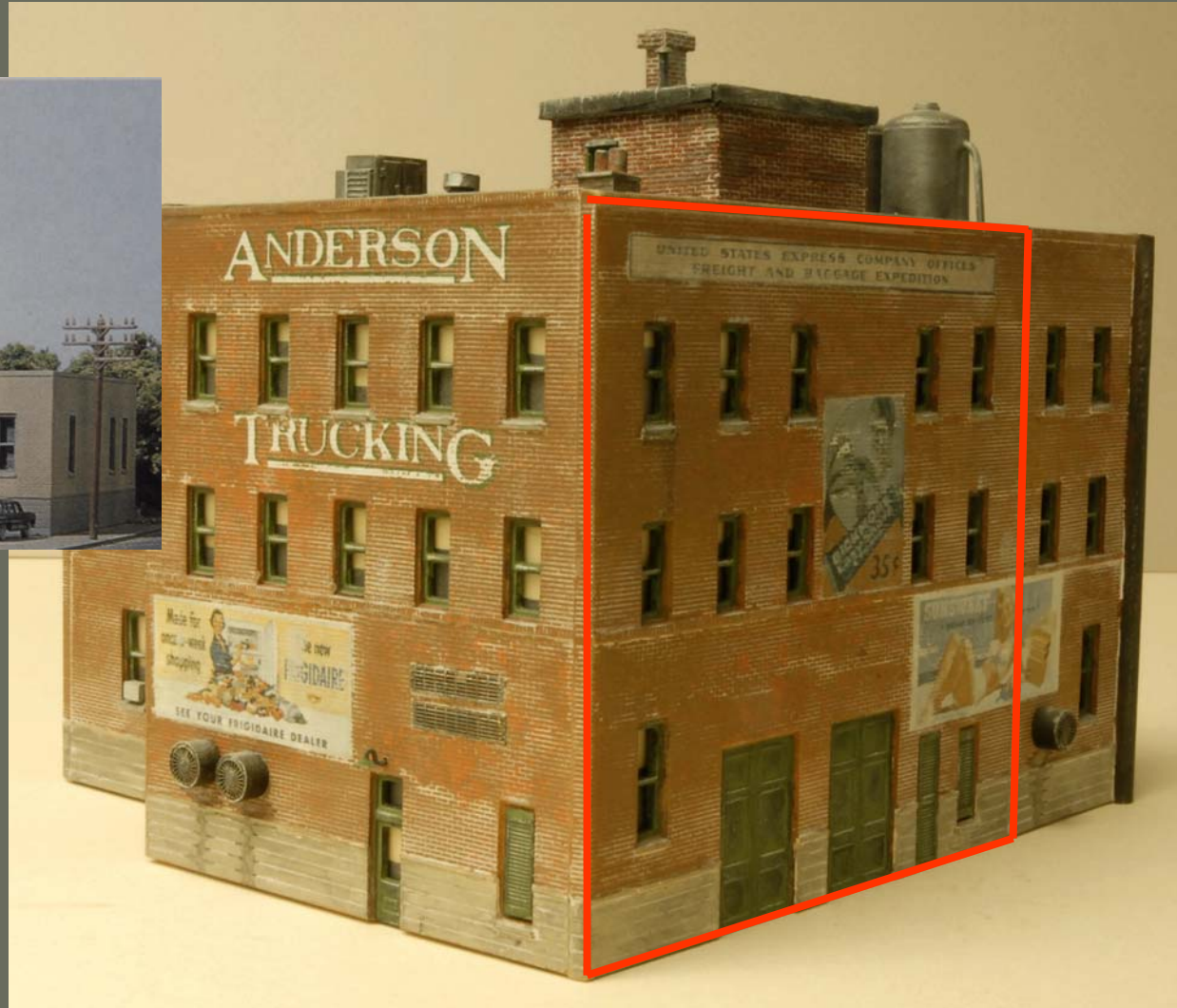
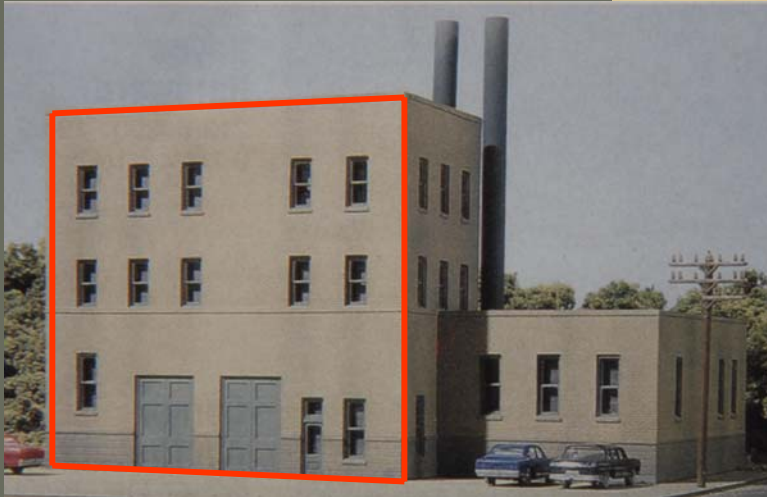
Douglas

BUY REAL  
HARRIGAN'S

HARRIGAN'S LAUNDRY

BUY REAL  
HARRIGAN'S

# More Kit-bashing



## GOODNIGHT MATTRESS CO.

*As before, it helps to photocopy the kit pieces in order to plan the kit-bash effectively.*

# Changing the Footprint

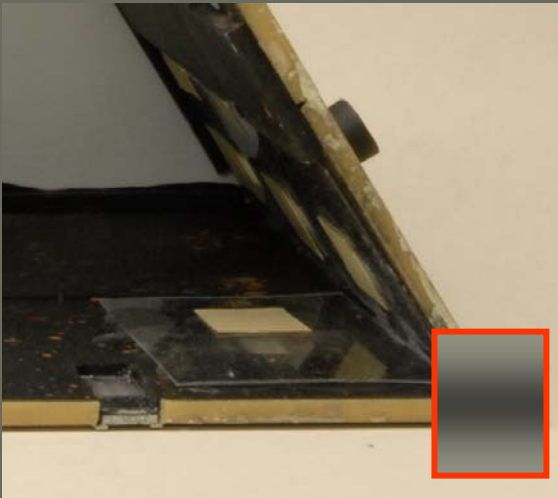
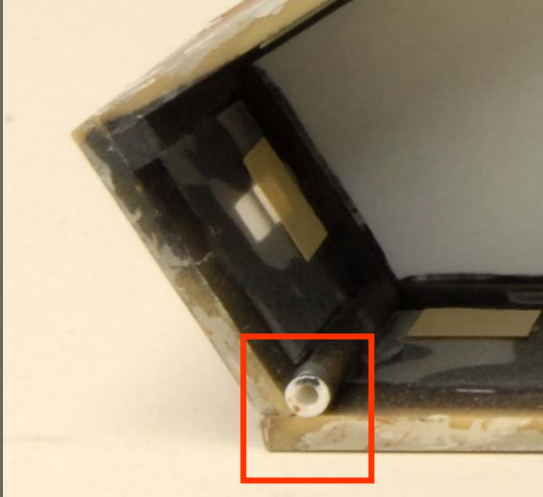
When changing the footprint to an angled shape, the angled corners, which are no longer square, become challenges.

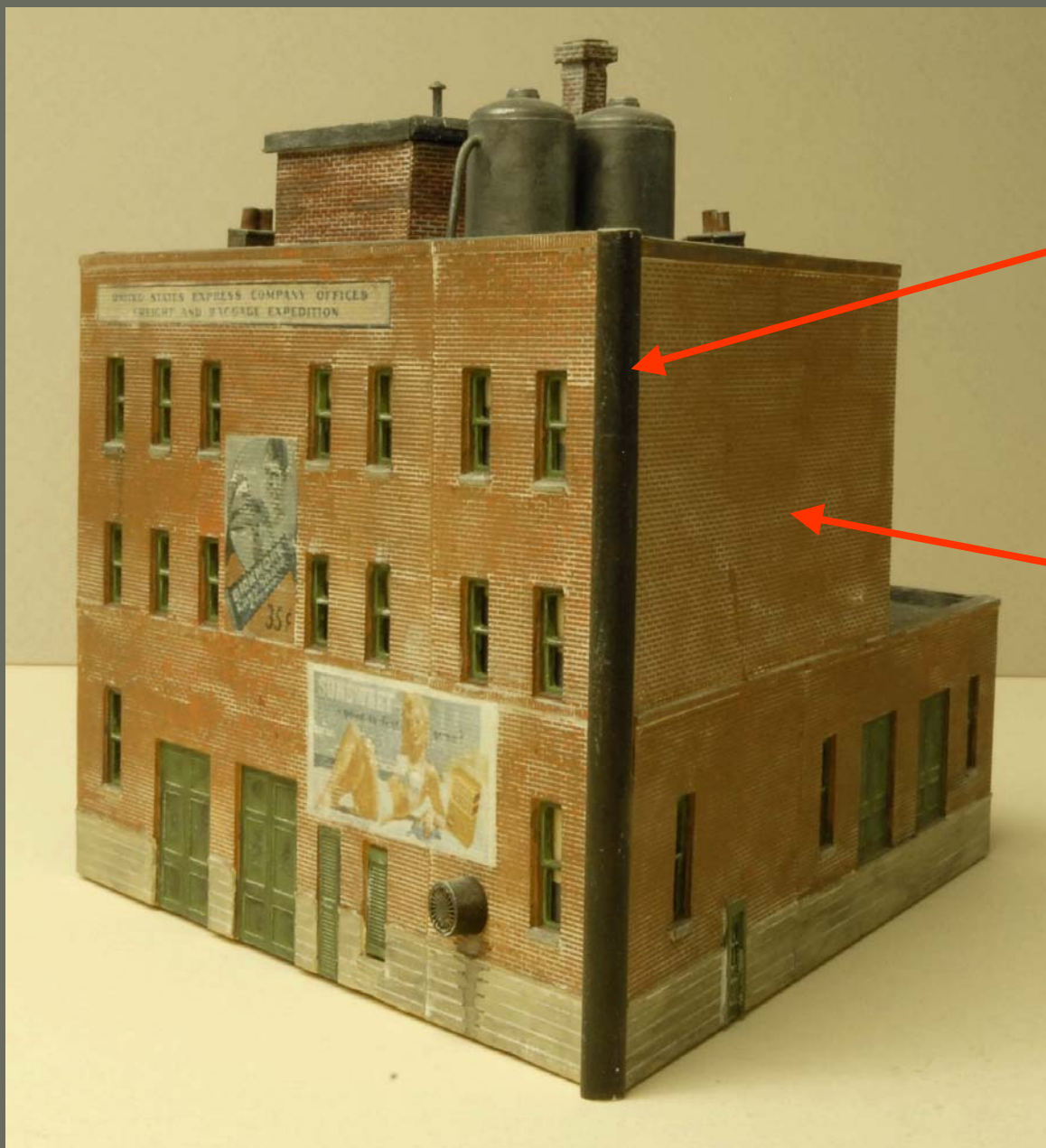


# Tips for those Oblique Angles

**Sand the edge to a bevel instead of trying to cut through the thick styrene:**

- *Use coarse sandpaper on a hard, flat surface for the major sanding.*
- *Sand in a circular or Figure 8 design to avoid unevenness.*
- *Use finer sandpaper for final smoothness.*
- *Piping (styrene tubing) can be used on the outside of oblique angles to form the leading edge or on the inside for additional bracing.*





Piping (styrene tubing) for the oblique angle edge

Brick sheet stock for large brick areas.

Not all wall seams need to be hidden; walls seams are not uncommon in masonry as expansion joints.





# ROOFING DETAILS

Dry-brushing highlights the details!

*Tarpaper roofing*

*Elevator housing*

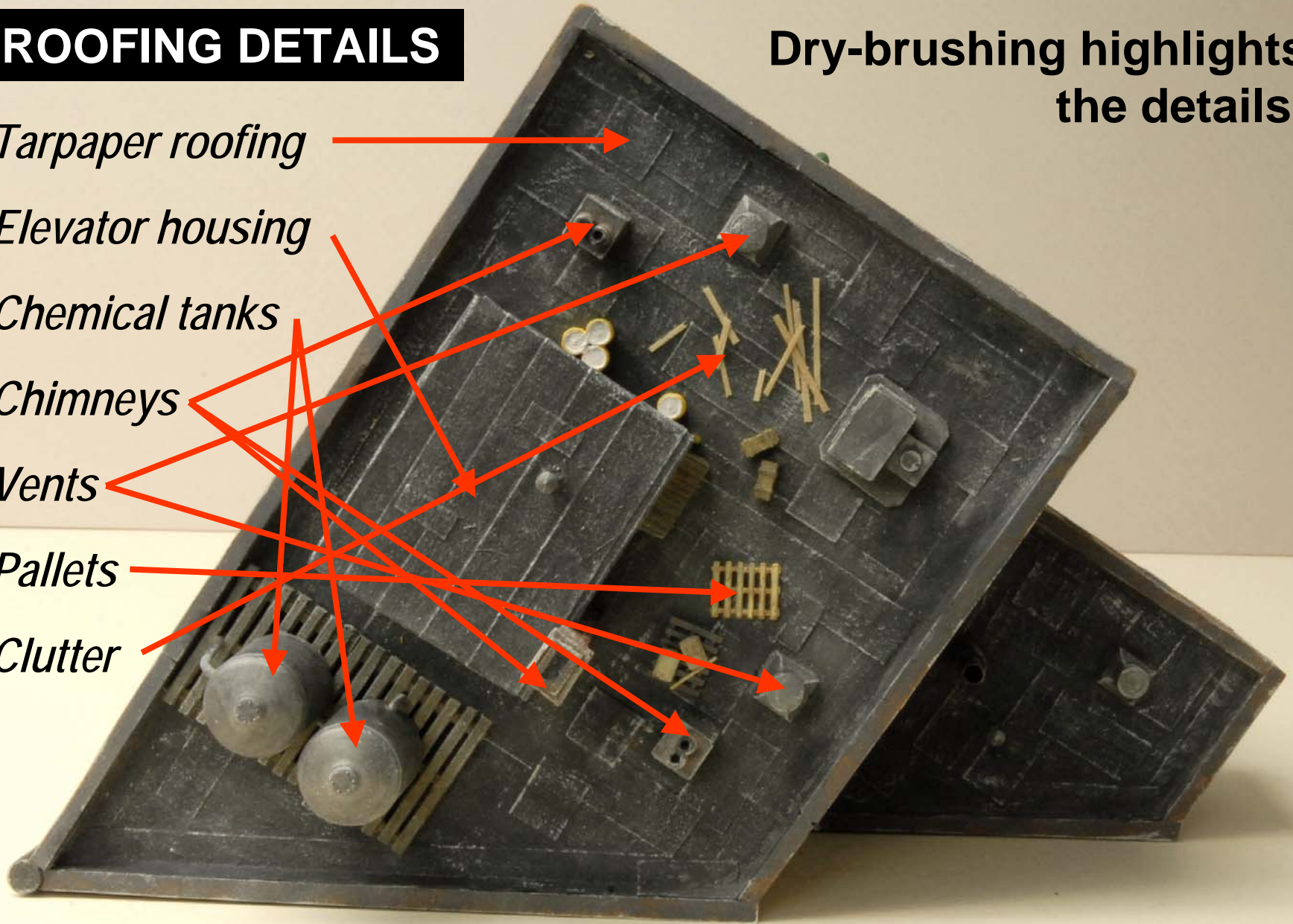
*Chemical tanks*

*Chimneys*

*Vents*

*Pallets*

*Clutter*

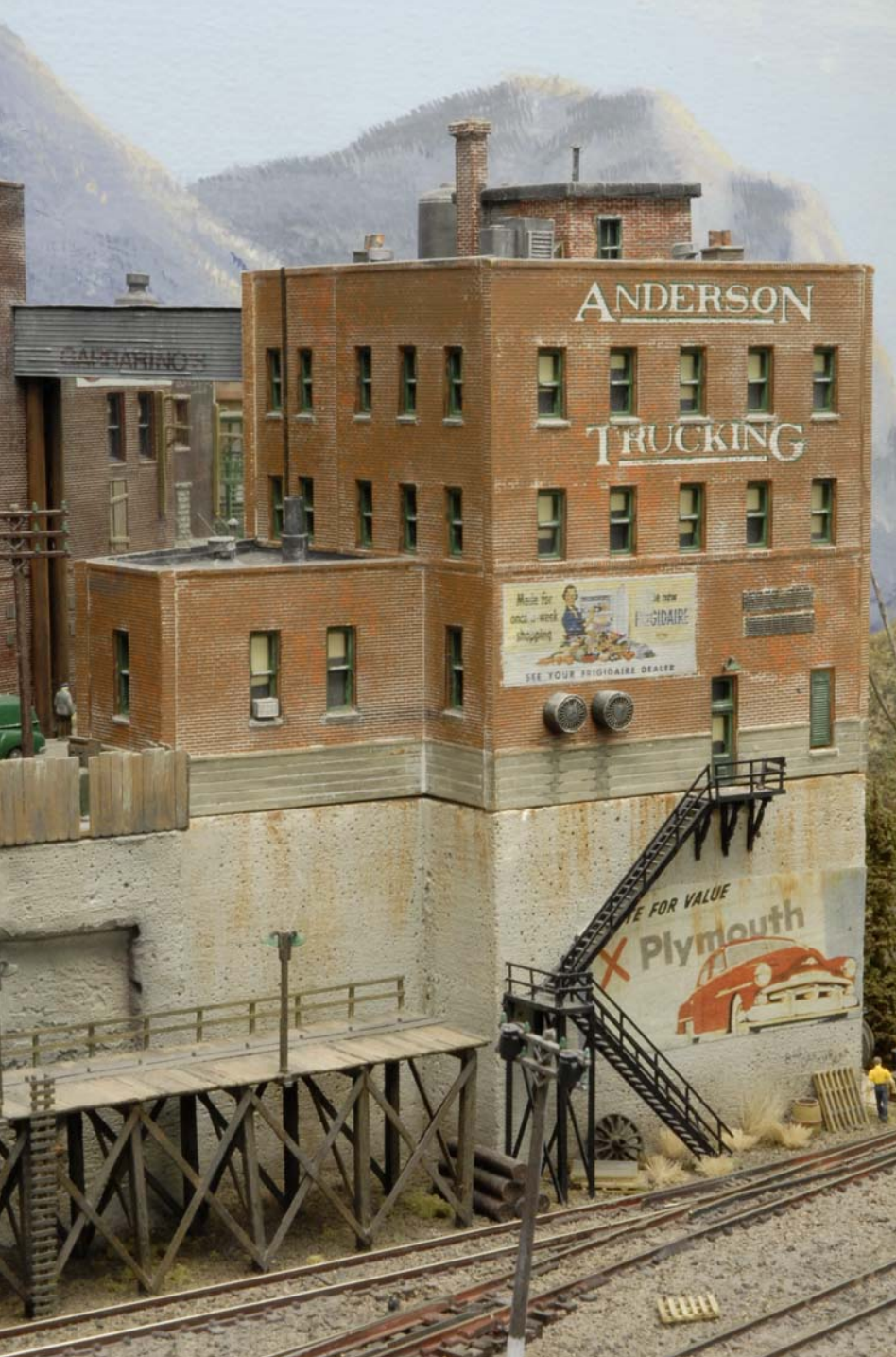


# Adding a large foundation structure

Large foundation structures can be added by casting them in plaster using balsa wood molds.

Here, the foundation structure also features a tunnel.





# Scrapbox Stuff

This relief structure was created from left over pieces from other DPM kits.



Use a small flame to melt the ends of fiber optics into simulated light bulbs.



Thread multiple fiber optics to a common light source.





Bricked in windows and watersheds add interest

Vents are found on the sides of buildings, along with lots of signage.



# More Scrapbox Stuff

This structure, also, was created from leftover DPM parts with added details



**“DPM City”, featuring five of the super-detailed  
DPM kits we’ve discussed  
(Month of July, 2009 NMRA Calendar)**

