



**GHOST ARTIST**

*Milliken*<sup>™</sup>



## INSPIRED. INSPIRING.

They work with glass and steel and concrete. Their canvas is the cityspace. They are the ghost artists. Unsung and uncredited, their contributions nonetheless lend impact to the architectural designs we admire everyday. These simple yet striking details are the inspiration for Ghost Artist.

Facade in Chicanery, monolithic tile



Trace in Recondite, monolithic tile



Facade in Shroud, monolithic tile



Semblance in Shroud, monolithic tile



Trace in Shroud, monolithic tile



Shadowpoint in Shroud, monolithic tile



Facade in Elusory with Negotiator in Black Book, monolithic tile

Colorline shown in **Facade**



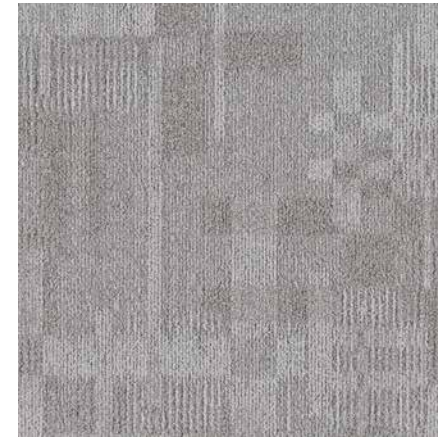
**FAC15-20 GUISE**  
(Semblance SEM15-20, Shadowpoint SHA15-20, Trace TRC15-20)



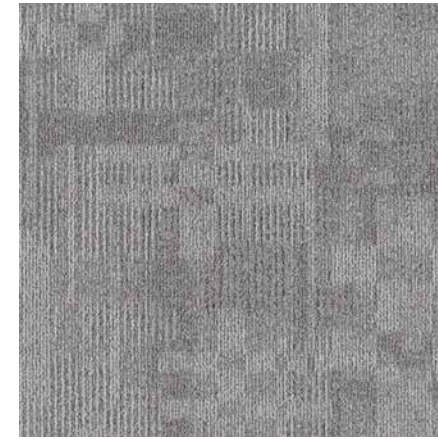
**FAC15-124 VISAGE**  
(Semblance SEM15-124, Shadowpoint SHA15-124, Trace TRC15-124)



**FAC48-122 VEILED**  
(Semblance SEM48-122, Shadowpoint SHA48-122, Trace TRC48-122)



**FAC5-6 MYSTIFY**  
(Semblance SEM5-6, Shadowpoint SHA5-6, Trace TRC5-6)



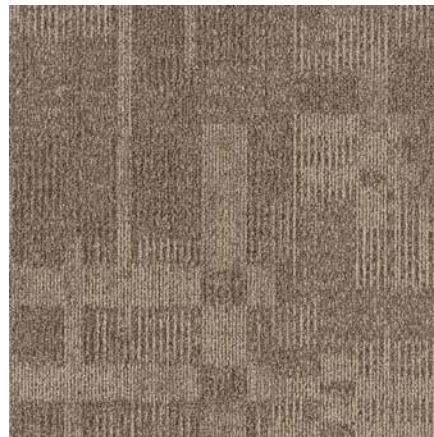
**FAC108-13 FACET**  
(Semblance SEM108-13, Shadowpoint SHA108-13, Trace TRC108-13)



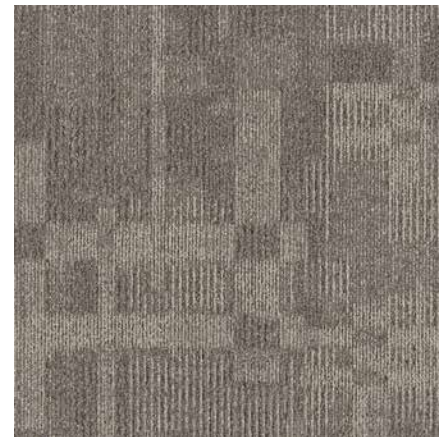
**FAC67-108 CHICANERY**  
(Semblance SEM67-108, Shadowpoint SHA67-108, Trace TRC67-108)



**FAC94-96 UMBRA**  
(Semblance SEM94-96, Shadowpoint SHA94-96, Trace TRC94-96)



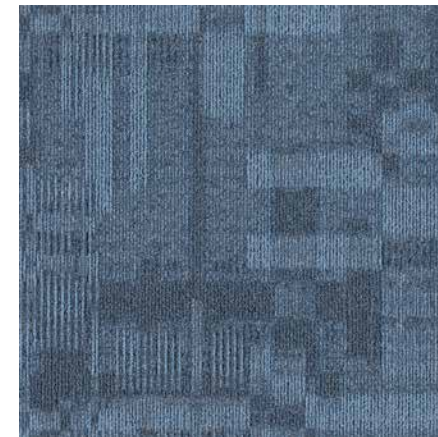
**FAC124-94 CACHE**  
(Semblance SEM124-94, Shadowpoint SHA124-94, Trace TRC124-94)



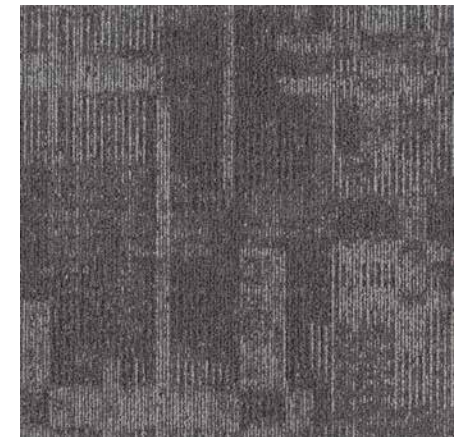
**FAC122-120 CLOAK**  
(Semblance SEM122-120, Shadowpoint SHA122-120, Trace TRC122-120)



**FAC171-25 SHROUD**  
(Semblance SEM171-25, Shadowpoint SHA171-25, Trace TRC171-25)



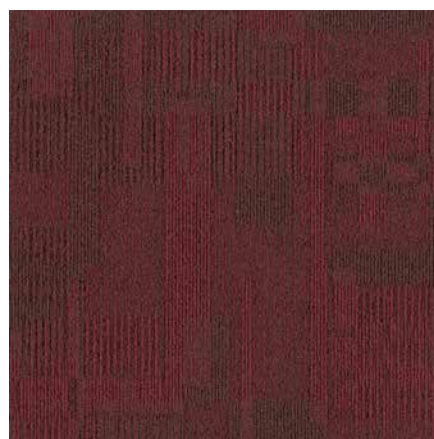
**FAC52-126 ENSCONCE**  
(Semblance SEM52-126, Shadowpoint SHA52-126, Trace TRC52-126)



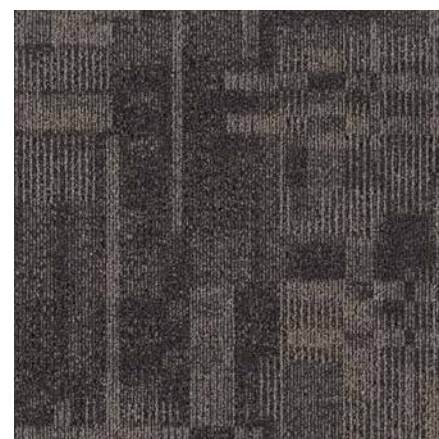
**FAC13-118 OBSCURA**  
(Semblance SEM13-118, Shadowpoint SHA13-118, Trace TRC13-118)



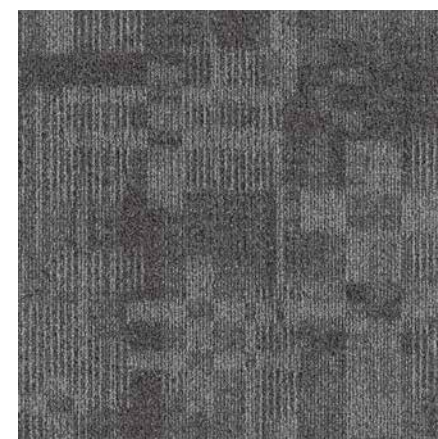
**FAC93-178 RECONDITE**  
(Semblance SEM93-178, Shadowpoint SHA93-178, Trace TRC93-178)



**FAC60-82 SECLUDE**  
(Semblance SEM60-82, Shadowpoint SHA60-82, Trace TRC60-82)



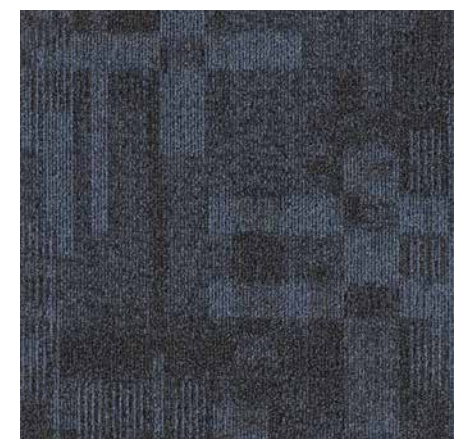
**FAC133-120 CONCEAL**  
(Semblance SEM133-120, Shadowpoint SHA133-120, Trace TRC133-120)



**FAC25-118 SPECTRAL**  
(Semblance SEM<sup>2</sup>5-118, Shadowpoint SHA25-118, Trace TRC25-118)



**FAC67-119 ELUSORY**  
(Semblance SEM67-119, Shadowpoint SHA67-119, Trace TRC67-119)



**FAC27-52 STEALTH**  
(Semblance SEM<sup>2</sup>7-52, Shadowpoint SHA27-52, Trace TRC27-52)

## Style Backed by Performance

Milliken Floor Covering offers products and expertise in all areas of your commercial spaces, including high-performance entryway systems, modular and broadloom carpet, luxury vinyl tile and milliCare®. Simplify your flooring projects by working with a trusted partner that lets you focus on enjoying the process of creating a great space.

Milliken

## Complete Performance and Support

### ENTRANCE FLOORING

The OBEX® brand of products offers highly effective, comprehensive modular entry solutions designed as a three-zone barrier system to prevent dirt and moisture from entering the building. Available in coordinated colors and patterns, OBEX entry products are engineered to increase the functionality of a building's entrance without forsaking elements of design or aesthetic.

### MODULAR CARPET AND BROADLOOM

Milliken's broadloom and carpet tile incorporate the latest innovations in tufting and dyeing technology, achieving unique looks and excellent performance. All carpet tile products have cushion backing for an extended lifespan, as well as ergonomic and environmental benefits.

### LUXURY VINYL TILE

From natural looks of wood and stone to more modern textures and abstracts, Milliken's collection of Luxury Vinyl Tile flooring creates new options for a commercial or hospitality interior. Our simple-to-search Color Reference system provides easy coordination of the LVT options to modular and broadloom carpets.

### MILLCARE®

milliCare takes caring for your flooring and textiles off your to-do list, which means you can skip right to the part where you get to lean back, put your hands behind your head, and be a hero for keeping a beautifully cleaned space.



#### WARRANTY

Our products are backed by lifetime commercial warranties that ensure quality and give peace of mind. Milliken stands behind its products in the areas of Face Fiber Wear, Staining/Soiling Resistance, Color Pattern Permanency, Delamination of Backing, Edge Ravel, Tuft Bind, Floor Compatibility, Antistatic, Flammability, Cushion Resiliency, Dimensional Stability, Floor Release, TractionBack and Moisture Resistance.  
» [millikenfloors.com/warranty](https://millikenfloors.com/warranty)



#### SUSTAINABILITY

Core to our culture, we embrace sustainability with practices such as third party voluntary product labeling and certifications, zero waste to landfill since 1992, use of renewable energy, product lifecycle assessments, ISO 9000 quality standards and all of our manufacturing sites are certified to the highest global environmental standard - ISO 14001 certified.  
» [millikenfloors.com/sustainability](https://millikenfloors.com/sustainability)



#### STAINSMART®

StainSmart provides lifetime resistance for your carpet against penetrating stains and soil.  
» [millikenfloors.com/stainmart](https://millikenfloors.com/stainmart)



#### MOISTURE MANAGEMENT

Milliken modular carpet is a moisture mitigation solution all by itself. Unlike with hardback products, water vapor has a way to escape from beneath Milliken's cushion backing. It travels freely through our open-cell cushion, evaporating naturally through seams at the edges of each carpet tile. All modular carpet tiles come with a lifetime warranty against adhesive breakdown due to moisture vapor emissions.  
» [millikenfloors.com/moisture](https://millikenfloors.com/moisture)



#### CUSHION BACKING

Provides superior underfoot comfort while improving the carpet's durability and offering ergonomic, acoustic and environmental benefits.  
» [millikenfloors.com/cushion](https://millikenfloors.com/cushion)



#### SIT TO STAND

Avoid the hassle and expense of using anti-fatigue mats under sit-to-stand workstations. Milliken cushion backed carpet tiles have ergonomics built directly into the carpet tiles themselves.  
» [millikenfloors.com/sit2stand](https://millikenfloors.com/sit2stand)



#### TRACTIONBACK®

Our bio-based high-friction coating keeps carpet tiles securely in-place without additional adhesives, eliminating the need to prime or seal the floor thereby reducing installation time and costs.  
» [millikenfloors.com/tractionback](https://millikenfloors.com/tractionback)

# GHOST ARTIST

## Facade/Semblance/Shadowpoint/Trace

### Construction

Tufted, Textured Loop

### Tile Size

50 cm x 50 cm (19.7" x 19.7")

### Yarn Type

Universal Fibers® Solution-Dyed Nylon

### Stain Resist / Soil Release

StainSmart®

### Gauge

1/12

### Stitches Per Inch

Facade: 10.8, Semblance: 10.6

Shadowpoint: 12.2, Trace: 10.6

### Tufts

Facade: 129.6/in<sup>2</sup> (2,007/100 cm<sup>2</sup>)

Semblance:

127.2/in<sup>2</sup> (1,970/100 cm<sup>2</sup>)

Shadowpoint:

146.4/in<sup>2</sup> (2,267/100 cm<sup>2</sup>)

Trace: 127.2/in<sup>2</sup> (1,970/100 cm<sup>2</sup>)

### Standard Backing

PVC-Free WellBAC® Comfort

Cushion

Available with TractionBack®

### Recycled Content by

#### Total Weight

Standard Backing: 39.3% Pre-

Consumer, 0.0% Post-Consumer

NSF 140 Platinum Backing Option:

28.6% Pre-Consumer, 10.7%

Post-Consumer

### Embodied Carbon

Facade: 15.16 (kg CO<sub>2</sub>e)/m<sup>2</sup>

Semblance: 15.16 (kg CO<sub>2</sub>e)/m<sup>2</sup>

Shadowpoint: 15.97 (kg CO<sub>2</sub>e)/m<sup>2</sup>

Trace: 15.56 (kg CO<sub>2</sub>e)/m<sup>2</sup>

### Nominal Total Thickness

Facade: 0.32" (8.1 mm)

Semblance: 0.34" (8.6 mm)

Shadowpoint: 0.32" (8.1 mm)

Trace: 0.33" (8.4 mm)

### Nominal Total Weight

Facade & Semblance:

103.0 oz/yd<sup>2</sup> (3,492 g/m<sup>2</sup>)

Shadowpoint:

105.0 oz/yd<sup>2</sup> (3,560 g/m<sup>2</sup>)

Trace:

104.0 oz/yd<sup>2</sup> (3,526 g/m<sup>2</sup>)

### Flammability (Radiant Panel

ASTM E-648)

≥ 0.45 (Class I)

### Smoke Density (NFPA-

258-T or ASTM-E-662)

≤ 450

### Methanamine Pill Test

(CPSC FF-1-70 or ASTM D

2859

Self-Extinguishing

### Lightfastness (AATCC 16E)

≥ 4.0 at 80 Hours

### Crocking (AATCC 165)

≥ 4.0 Wet or Dry

### Static Electricity

(AATCC-134) 20%

R.H., 70° F.

≤ 3.5 KV, Permanent

Conductive Fiber

### Texture Appearance

Retention Rating (TARR)

Facade: Severe Traffic End-

Use Applications

Semblance, Shadowpoint &

Trace: Heavy Traffic End-Use

Applications

### Recommended Maintenance

MilliCare® Textile and Carpet

Care Service Network

### Indoor Air Quality—CRI

Green Label Plus™

GLP0793, Carpet Category 5Y

### Recommended Installation

Method(s)



MONOLITHIC

## SUSTAINABLE FEATURES

Ghost Artist is manufactured with WellBAC® Comfort cushion backing, and is certified NSF-140 Gold with over 40% pre-consumer recycled content by total product weight. Ghost Artist is also available with our NSF-140 Platinum backing option. All Milliken modular carpets carry Environmental Product Declarations and Health Product Declarations, which contribute to LEED certification. Additionally, Milliken modular carpets carry Declare® transparency labels and comply with the Red List Imperative of the Living Building Challenge.™



Declare.



Images in this brochure are approximate for color and pattern scale. Please use actual carpet samples to make your final selections.

Milliken™

Customer Concierge 800.824.2246 | millikenfloors.com  
© 2021 Milliken & Company | Design © Milliken & Company | Made in the USA

2710023544  
CP 0422

### SHOWN ON THE COVER

(Front) Facade in Chicanery, monolithic tile (Back) Semblance in Ensconce with Formwork in French Blue, monolithic tile.



Scan to learn more.