

2007
WINNEBAGO
Vectra®

VECTRA





40TD Serenity with Honey Cherry

Destined to Travel.

Designed to surround you in refined comfort and provide years of memorable travel adventures, the 2007 Vectra stands tall and proud as the flagship of the Winnebago lineup, delivering unparalleled features and performance. It all begins with the Evolution Chassis®, featuring exclusive formed rails that deliver superior strength-to-weight ratios and incredible floorplan flexibility. Shown above, the all-new 40TD has incredibly spacious opposing flat-floor sliderooms (15 feet 11 inches and 21 feet 6 inches) for plenty of living space. The 8,000 watt Onan® Quiet Diesel™ puts power at your disposal. Choose the available automatic start system and your generator will kick in when your house batteries need a charge. Floor-ducted heating and ceiling-ducted TrueAir® residential central air conditioning provide maximum climate control. Dual-glazed, flush-mounted windows come standard and provide thermal efficiency. Day/night pleated shades offer full control over light and privacy levels.

Add to that exterior styling that will turn heads wherever you go and well-designed and appointed interior amenities that surround you in user-friendly comfort, and you have the 2007 Vectra, the coach of your dreams.

On the cover: 40FD with Dark Forest full-body paint.



40KD

Surround Yourself With Luxury.

If you have an affinity for beautiful, solid-wood cabinetry, you will absolutely adore the elegant satin look created by the catalyzed topcoat finish. A sleek Euro Lounge Chair will become your favorite place to relax and is a standard feature on the 40FD. The comfortable sofa sleeper by Villa, available in UltraLeather™, is a great place to sit and relax.

With its 30-inch high-definition Sony® TV and an available electric fireplace, the entertainment center gives you all the comforts of home. Upgrade your TV in the 40FD or 40TD by choosing the 37-inch, high-definition LCD TV. (The entertainment center is available only on the 40FD.)

WEB Select a Key Feature

The **WEB** icon designates a Winnebago Industries Key Feature. For further in-depth information and photos, use the Search Window or click on the Key Features page at winnebagoind.com.



40FD Sandy Cove with Washed Maple



40TD

Premium Entertainment.

Enjoy your favorite shows and movies on the available 37-inch TV (40FD and 40TD). The Home Theater Sound System provides a true surround-sound experience while the 2,000-watt inverter/charger lets you enjoy your favorite programs, even when you're not connected to shoreline or generator power. Enjoy more channels by adding the in-motion satellite system.*

*Satellite TV requires a subscription. See your dealer for details.



40TD

Best Seat in the House.

The available Home Theater Lounge seating by Villa features over-stuffed cushions, soft UltraLeather upholstery, individual footrests, armrests and beverage holders (available on 40TD only).



A Chef's Delight.

Vectra owners enjoy a kitchen that has it all: elegant, solid-surface Corian® countertops; a space-saving pullout pantry on the 40FD and 40TD; even stainless steel appliances, including a 30-inch microwave/convection oven. The available G.E.® Advantium™ Speedcook oven gives you greater flexibility when cooking.

Cleanups are easy in the large, stainless steel sink. It includes a Moen® faucet with pullout sprayer and a separate faucet for clear, satisfying Everpure® filtered water.

A dining table and four chairs come standard on every model. Or you can choose the comfort and storage of the BenchMark™ full comfort dinette. There's also the available multifunction table that doubles as a computer desk. When it is time to set the table, you will appreciate the full-extension drawer slides and wooden silverware tray.

40TD

Refrigerator/Freezer.

Your Vectra features a four-door refrigerator/freezer for plenty of cold storage. The refrigerator has Titanium Touch stainless finish doors that have the look of stainless steel, resist fingerprints and are warmer to the touch than traditional stainless steel. As an added benefit, you can use your favorite kitchen magnets.



titanium TOUCH
STAINLESS
WEB



Dishwasher.

Make meal cleanup a snap with the available drawer-style dishwasher.



Drawer Slides Farther.

Full-extension drawer slides allow drawers to fully extend for easy access to stored items.



Neat and Tidy.

We pay attention to the smallest details; that's why we've added formed handles to the wastebasket, so you can easily use a plastic grocery bag in place of a garbage bag.

The Comforts of Home.

After a day of traveling, it is nice to have a space to relax in. With the standard rear slideouts, the Vectra's bedroom becomes your personal retreat after a full day of adventures. Watch your favorite TV program on the 20-inch LCD TV. Add the available rear stereo system so you can enjoy the AM/FM stereo with CD/DVD player, alarm clock, headphone jack and a spot to connect your MP3 player. The available ceiling fan helps keep things comfortable on those warm summer nights.

The bathroom offers elegant touches such as ceramic tile floorcovering, Corian solid-surface countertops, a granite-look shower and a high-output water heater to help ensure you'll always have plenty of hot water. No need to bring a vacuum along — there's an available central vacuum system with built-in VacPan®.



40KD Serenity with Honey Cherry



A Good Night's Sleep.

The Vantage Point™ Sleep Number® bed by Select Comfort™ allows you to quickly and independently adjust each side of the bed to your ideal level of comfort and support. (King size available on the 40KD.)



Washer/Dryer.

The available combination washer/dryer features multiple wash, time and temperature cycles, giving you the convenience of doing your laundry at home.



Bath.

A Moen Posi-Temp® valve regulates a consistent water temperature as you shower, even if water pressure fluctuates.



The RV Radio® includes AM/FM stereo; CD player; weather band; and large, easy-to-use buttons and knobs. Upgrade your RV Radio with the available Sirius® Satellite Radio package. Sirius brings you 120 channels of crystal clear programming and a free six-month subscription. (Sirius Satellite Radio not available in Canada.)



Engineered to Impress.

Our engineers pay meticulous attention to every detail. Vectra's dash is ergonomically designed, putting the driving controls at your fingertips. The SmartWheel™ steering wheel controls key functions and also tilts and telescopes. Additional dash features include electronic compass; thermometer; built-in defroster fans; bus-style, power driver and passenger sun visors; sliding driver and passenger windows; driver and passenger map lights; high-back, custom-designed Stitchcraft driver and passenger cab seats in UltraLeather; and an available global positioning system. The standard Sony rearview monitor system and optional side cameras are activated with the turn signals and provide peace of mind while maneuvering.



PowerLine® WEB
Our energy management system monitors electrical usage and automatically cycles postponable appliances on and off to prevent power overloads.

OnePlace®
This complete systems center places frequently used switches, gauges and controls in one convenient location.



Adjustable Pedals.
The automotive-style brake and accelerator pedals are adjustable at the push of a button.



TrueAir.
The residential central air conditioning system cools 40 percent faster and runs 10 percent quieter than roof units. The key is a Coleman-Mach® cooling unit located in the basement for a lower vehicle profile and maximum cooling of all areas of the motor home.



TrueLevel™
When it comes to tank levels, eliminate guesswork with our exclusive TrueLevel holding tank monitoring system. It incorporates detector cells that read liquid levels from outside the tank. No probes mean no more corrosion, just accurate readings time after time.

Everything Has Its Place.

We talked to Winnebago owners and other motor home enthusiasts to learn how we could make better use of available storage space. Our Smart Storage™ solutions give you a more convenient and functional way to store your gear. The large StoreMore® exterior storage compartment features straps and attachment points to securely hold essential tools and accessories. Electrical and plumbing connections can be found in one convenient location and are color-coded and labeled. There's even a place to clip gloves so they're always available when you need them. Another new feature for 2007 is a full-coach water filtration system conveniently located in the service center, as is a hookup for a portable satellite dish.

Other exterior enhancements include standard electric patio and entrance door awnings and an entrance screen door.



StoreMore.

No crawling on your hands and knees to reach stored items. Our StoreMore slideout system extends the exterior compartments along with the slideroom for easy access to your gear.



Service Center.

The QuickPort® service connection hatch is fast, simple and allows you to close the bay doors while keeping hookups connected. The QuickConnect® coupling valve on the sewer hose makes for quick and clean hookups and has its own storage holster.



Ladder Plus Storage.

The available foldout aluminum ladder comes with its own storage sleeve for easy access.



Entertainment Center.

Your exterior entertainment center can be enhanced with a 20-inch LCD TV and DVD player.



Slideout Storage.

Enhance your storage capabilities by choosing the available slideout storage box for easy access to stored items (not available on the 40TD). Or, for additional cold storage, choose the available portable refrigerator/freezer.



Dash Pad



Service Center



Entrance Door

Hydraulic Leveling Jacks.

New for 2007 is our exclusive three-position hydraulic jack switching system. Control your jacks from the driver's seat, entrance door or service center. Leveling your motor home has never been easier.



Caspian Blue



Sandy Cove



Serenity



A-Main Fabric
B-Carpet
C-Accent



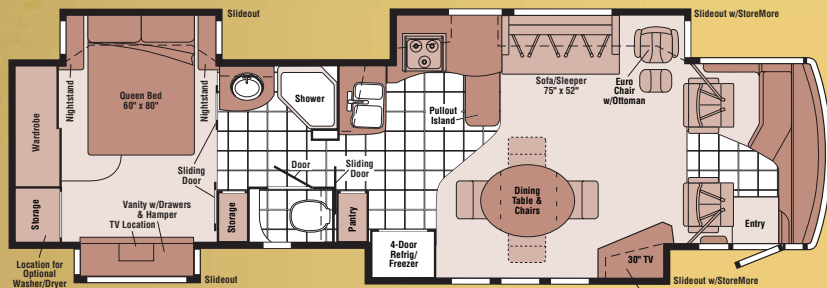
Concert Cherry



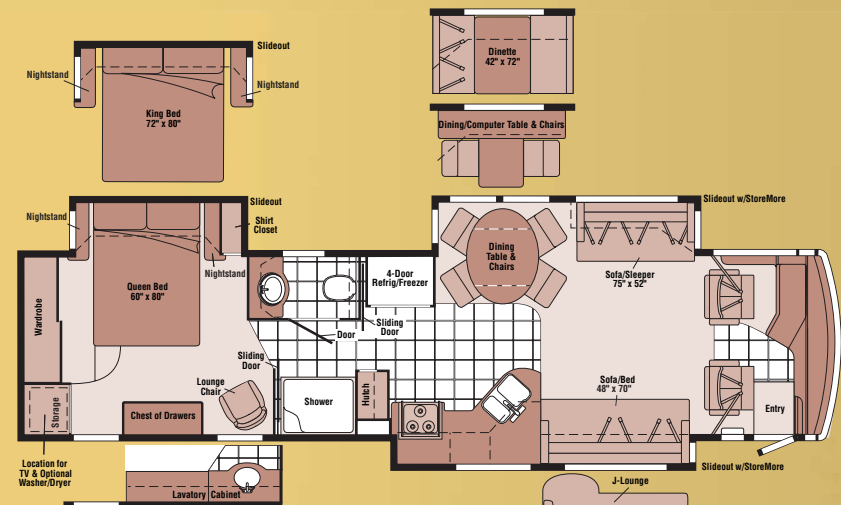
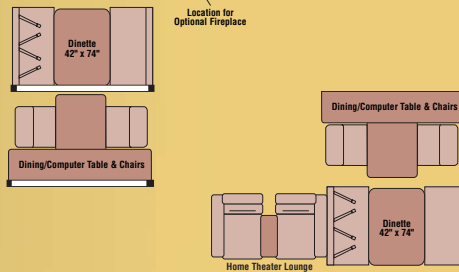
Washed Maple



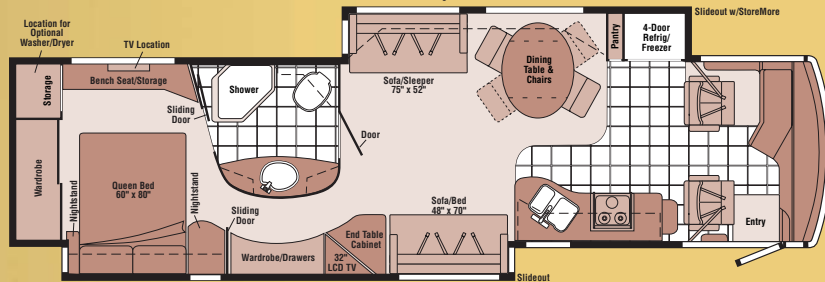
Honey Cherry



40FD



40KD



40TD - NEW



Note: Dimensions shown are for sleeping space only and may vary due to styling differences. Dashed lines denote overhead storage areas.



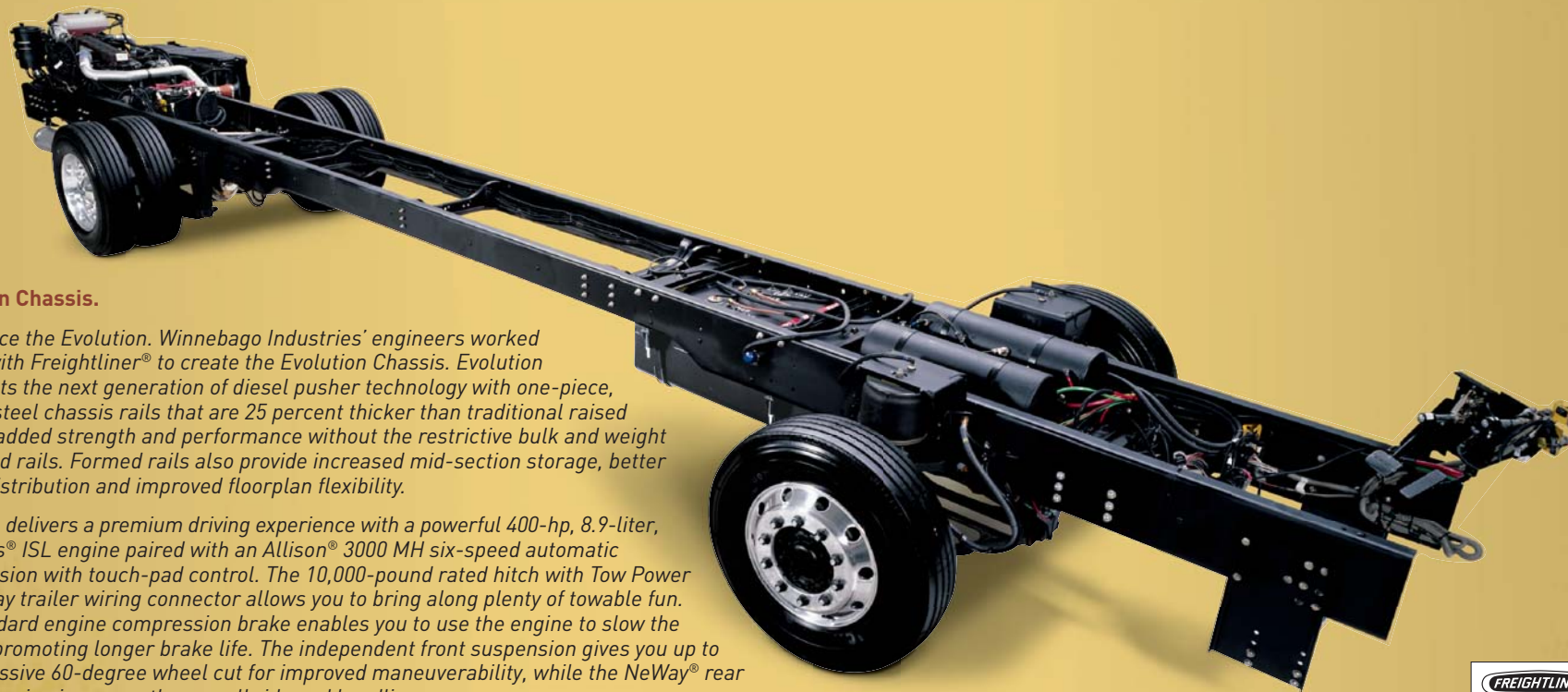
Valley Sage — Full-Body Paint



Dark Forest — Full-Body Paint



Aspen Mist — Full-Body Paint



Evolution Chassis.

Experience the Evolution. Winnebago Industries' engineers worked closely with Freightliner® to create the Evolution Chassis. Evolution represents the next generation of diesel pusher technology with one-piece, formed-steel chassis rails that are 25 percent thicker than traditional raised rails for added strength and performance without the restrictive bulk and weight of stacked rails. Formed rails also provide increased mid-section storage, better weight distribution and improved floorplan flexibility.

Evolution delivers a premium driving experience with a powerful 400-hp, 8.9-liter, Cummins® ISL engine paired with an Allison® 3000 MH six-speed automatic transmission with touch-pad control. The 10,000-pound rated hitch with Tow Power seven-way trailer wiring connector allows you to bring along plenty of towable fun. The standard engine compression brake enables you to use the engine to slow the vehicle, promoting longer brake life. The independent front suspension gives you up to an impressive 60-degree wheel cut for improved maneuverability, while the NeWay® rear air suspension improves the overall ride and handling.

On top of that, you'll have access to a network of more than 400 Freightliner chassis service centers, many open 24 hours a day, seven days a week. Take the wheel of the Vectra and experience the driving comfort, responsive handling and smooth ride you've come to expect from Winnebago.



THE LEADER AT EVERY TURN™

WEIGHTS & MEASURES	40FD	40KD	40TD
Length	39'8"	39'8"	39'8"
Exterior Height ¹	12'4"	12'4"	12'4"
Exterior Width ²	8'5.5"	8'5.5"	8'5.5"
Exterior Storage ³ (cu. ft.)	151.2	141.9	138.8
Awning Length	20'	20'	20'
Interior Height	7'2.5"	7'2.5"	7'2.5"
Interior Width	8'5"	8'5"	8'5"
Freshwater Capacity w/Heater ⁴ (gal.)	108	108	107
Holding Tank Capacity – Black/Gray ⁴ (gal.)	57/72	57/72	52/86
LP Capacity ⁵ (gal.)	31	31	31
Fuel Capacity (gal.)	100	100	100
GCWR ⁶ (lbs.)	44,320	44,320	44,320
GVWR (lbs.)	34,320	34,320	34,320
GAWR – Front (lbs.)	14,320	14,320	14,320
GAWR – Rear (lbs.)	20,000	20,000	20,000
Wheelbase	267"	267"	267"

Standard - S Optional - O	40FD	40KD	40TD
AUTOMOTIVE/CHASSIS			
Freightliner® Evolution Chassis® – Cummins® ISL 8.9L turbo-charged diesel, 400-hp, side radiator, Allison® 6-speed electronic 3000 MH transmission, ZF™-IFS front air suspension, NeWay® rear air suspension, 160-amp. alternator, 4-wheel ABS, engine compression brake	S	S	S
Air Accessory Manifold quick connect, 50' air hose, pressure gauge, manual air shutoff, Battery Disconnect chassis, manual, Leveling Jacks HWH® hydraulic, w/3-way switching system, Trailer Hitch ⁴ 10,000-lb. drawbar/500 lbs. maximum vertical tongue weight & wiring, 7-pin connector, Wheels stylized aluminum	S	S	S
CAB AREA & DRIVER CONVENIENCES			
Cab Seats (UltraLeather™) armrests, footrest (passenger), adj. lumbar support, multi-adjustable slide/recline & swivel, Compass electronic w/outdoor thermometer, Console Center Cabinet , Cruise Control , Defroster Fans auxiliary, built-in, 2-speed w/instrument panel switch, Compression Brake Control , Floor Mat (Driver) carpet, Freightliner Information Center see Freightliner Owner's Manual, Map Lights , Monitor System rear-view, color, single camera & 1-way audio, Sony®, Power Door Lock keyless entry w/remote, Powerpoints 12-volt DC, Steering Wheel custom, SmartWheel™ w/power-assist, tilt, Sunvisors powered, Trim Panels driver & passenger, Window (Driver) full-slider w/screen, dual-glazed, Window (Passenger) partial slider w/screen, dual-glazed, Windshield Wipers intermittent, radial arms	S	S	S
Cab Seats 6-way, power assist, driver & passenger, Cab Seats 6-way, power assist, driver, GPS Navigation System , Spotlight roof-mounted w/wireless remote, Video Camera System side-mounted cameras, turn signal activated	O	O	O
ENTERTAINMENT			
Entertainment Center (Exterior) AM/FM radio, CD player w/remote, DC receptacle, AC duplex receptacle, TV jack, radio antenna, speakers (2), lockable compartment, Home Theater Sound System DVD/VCR, receiver, amplifier, speakers (5), subwoofer, Sony, RV Radio® (Cab) AM/FM/stereo/CD, remotes, roof-mounted flexible rubber antenna, speakers (4), weather band, Radio Power Switch main/auxiliary battery, Satellite System Ready , Telephone input & interior jacks, TV 20" AC color, bedroom, LCD, stereo w/remote, remote extenders, Sharp®, TV Enhancement Package antenna (amplified), interior jack(s), coax wiring, cable input, exterior jack, portable satellite dish hookup, Video Selection System	S	S	S

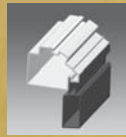
Standard - S Optional - O	40FD	40KD	40TD
CB Radio Cobra®, antenna, ant. lead, 12-volt DC power supply, Compact 10-Disc Changer w/remote, Satellite Dish Antenna RV digital, power, Satellite Dish RV digital, in-motion, King-Dome®, Satellite Radio antenna, docking port, receiver, Sirius®, includes 6-month paid subscription (NA in Canada), Stereo System (Bedroom) AM/FM CD/DVD player, headphone jack, auxiliary input (plays MP3), recessed cube speakers (2), bass speaker, alarm clock	O	O	O
Entertainment Center w/TV & DVD (Exterior) AM/FM radio, CD/DVD player w/remote, DC receptacle, AC duplex receptacle, TV 20" LCD AC color stereo w/remote, speakers (2), bass speaker, TV jack, remote extender, radio antenna, alarm, headphone jack, auxiliary input (plays MP3)	O	O	O
TV 27" AC color, front cabinet, flat-face, stereo w/remote, Sony		S	
TV 30" AC color, front slideout entertainment center, high-definition, flat-face, stereo w/remote, Sony	S		
TV 32" AC color, LCD, high-definition, stereo w/remote, Sony		O	S
TV 37" AC color, LCD high-definition, stereo w/remote	O		O
Fireplace electric	O		
INTERIOR			
Ceiling vinyl, Countertops solid-surface Corian®, Curtain front wraparound, pleated w/pull cords, Light(s) wall lamp(s), Lights ceiling w/wall switches, Lights fluorescent, lounge, Lights reading, auxiliary, Shades pleated, day/night, blackout, Sliding Stepwell Cover Panel 12-volt powered, Windows dual-glazed/thermo-insulated/flush-mounted	S	S	S
Fan ceiling, lounge, Sunscreen Package windshield screen, windshield wiper covers, Vacuum Cleaner Central , Dirt Devil®	O	O	O
FURNITURE			
BenchMark™ Full Comfort Dinette (Fabric) w/access to storage below, child-seat tether anchor, Multifunction Table & Chairs freestanding (2), folding (2), legless table w/solid-surface top, Sofa/Sleeper (UltraLeather, 75" x 52") air mattress, throw pillows, Villa	O	O	O

Standard - S	Optional - O	40FD	40KD	40TD
Dining Table & Chairs freestanding (2), folding (2), oval freestanding table, Sofa/Sleeper (Fabric 75" x 52") air mattress, throw pillows, Villa				
Entertainment Center hardwood				
J-Lounge (UltraLeather) access to storage below, throw pillows, Villa				
Lounge Chair (UltraLeather) Euro w/ottoman				
Sofa (Fabric 48" x 70") access to storage below, throw pillows, removable armrests (2), Villa				
Sofa (UltraLeather 48" x 70") access to storage below, throw pillows, removable armrests (2), Villa				
Theater Seats (UltraLeather) recliner, dual footrest, beverage holders, flip-up cover, Villa				
GALLEY				
Faucet single-control w/pullout sprayer, Moen®, Lights fluorescent, ceiling & under-cabinet, Microwave/Convection Oven w/sensor cook feature & exterior vent range fan, residential 30", stainless steel, Sharp, Range Cover flush-mounted (countertop material), Range Top 3-burner w/storage below, recessed, sealed burners, stainless steel, Amana®, Refrigerator/ Freezer four-door w/icemaker, Titanium Touch stainless finish, Norcold®, Roof Vent insulated, powered ventilator fan, Silverware Tray wood, Sink Covers (countertop material), Wastepaper Basket , Water Filtration System Everpure® separate faucet				
Dishwasher drawer-style, stainless steel, Microwave/Speedcook Oven w/range fan, residential 30", stainless steel, G.E.® Advantium™				
Island Storage Bin large, roll-out				
Island Storage Cabinet with solid-surface countertop				
Hutch decorative glass, adj. shelf				
Pantry				
BATH				
Cabinet lavatory, Cabinet linen, Cabinet medicine, Faucet (Shower) single-control hand-held showerhead, Light shower, Light fluorescent, recessed, Lights makeup, Roof Vent insulated, power, private toilet room, Shower w/wall surround, granite look, Shower Door textured glass, Shower Seat				
BEDROOM				
Bed queen, Serta® innerspring w/underbed storage, bedspread, pillows, throw pillows, Headboard , Lights reading, halogen, Light decorative, ceiling w/dimmer, Powerpoint 12-volt DC receptacle				
Bed Sleep Number® queen-size mattress by Select Comfort™, Fan ceiling				
Bed Sleep Number king-size mattress by Select Comfort				
EXTERIOR				
Air Horns roof-mounted, Awning Package patio w/wind sensor & remote, entrance door, electric, Awning Rails , Door entrance w/separate screen door w/roll-down screen, deadbolt lock, remote & touch-pad entry, Entrance Door Step double, electric w/doorjamb switch, Ladder , Lights fog lamps, Light porch w/interior switch, Light under hood, Lights compartment, Light service, driver side, Lights auxiliary docking lamps, Locking Fuel-Fill Doors , Mirrors electric remote w/defrost, chrome head, full-body paint color arms, turn signal, Mudflaps rear, Receptacle AC duplex, Sidewall Skin 1-piece smooth				

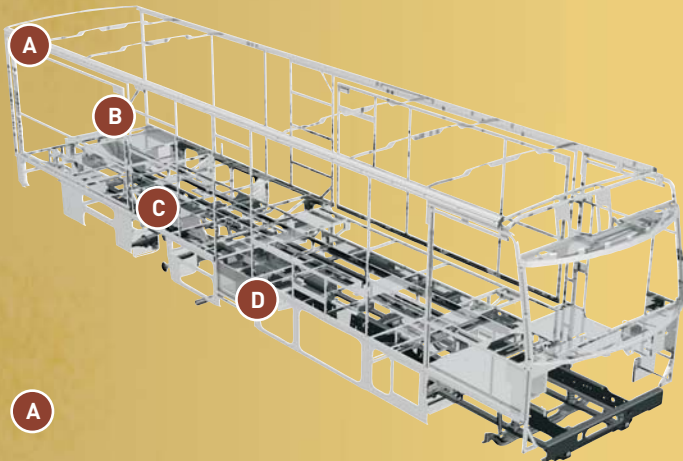
Standard - S	Optional - O	40FD	40KD	40TD
EXTERIOR (cont'd)				
fiberglass, high-gloss, Storage Compartments smooth valance panels, trunk liner, gas cylinders, TriMark® KeyOne™ System, paddle latch, lights, power locks, fold-up shelf, Storage Containers				
Awnings window, Mud Guard full-width, Front Exterior Protective Mask , Refrigerator/ Freezer portable, Spotlight roof-mounted w/wireless remote, Step Ladder folding				
Storage Box slideout, upper shelf & fold-down door				
SYSTEMS				
HEATING/AC – Automotive Heater/Air Conditioner blend air system, Furnace 40,000 BTU, 2-stage, primary, Furnace 25,000 BTU, secondary, TrueAir® Residential Central Air Conditioning System with heat pump				
ELECTRICAL – Auxiliary Start Circuit, Batteries (Coach) deep-cycle (3), slideout tray, Battery (Coach) disconnect system, manual, Battery Charge Control automatic dual, Battery Chassis Charger/Maintainer , Electrical Distribution System AC & DC breaker panels, 50-amp., Generator 8,000-watt, Onan® Quiet Diesel™ slide, Generator/Shoreline Automatic Changeover Switch , Converter/Inverter/Charger DC/AC, 2,000-watt w/remote panel, OnePlace® Systems Center wall-mounted, PowerLine® energy management display, courtesy light, battery digital voltmeter, generator hourmeter gauge, generator start/stop switch, heating & A/C thermostat, holding tank levels, LP tank level, solar panel/battery charger light, water heater switch, water heater on light & pilot indicator light, water pump switch, water tank level, Power Cord Reel powered, 12-volt DC, Power Cord 50-amp., Service Center (Electrical) cable inputs, power cord, QuickPort® service connection hatch, shoreline/generator automatic changeover switch, telephone input, TV/satellite input, Solar Panel 10-watt battery charger				
Generator Automatic Start System				
PLUMBING/LP – Drain 1½" water tank, Service Center (Drainage/Water) drainage valves, holding tank flushing system, city water hookup/tank diverter fill, drain for freshwater system, exterior wash station w/pump switch, glove holder, monitor panel, soap dispenser, QuickPort service connection hatch, paper towel holder, portable satellite hookup, 20' sewer hose w/QuickConnect® coupling valve, Tank flushing system, black tank only, Tank holding, heated compartment, Tank LP, permanent mount w/gauge, remote, 12-volt shutoff, TrueLevel™ Holding Tank Monitoring System , Water Heater 10-gallon (16-gallon output) electronic ignition, LP gas/120 VAC w/motoraid, high-output, Water System Winterization Package water heater bypass valve & siphon tube, Full Coach Water System Filtration Package replaceable filter, filter housing, wrench, Water Hookup city, Water Pump demand, Washer/Dryer Prep , Water Tank Fill pressurized city hookup w/diverter valve				
Washer-Dryer Combination , Water Supply Hose w/reel				
SAFETY				
Assist Bars interior, Assist Handle exterior, lighted, acrylic, Bumpers front & rear, Child-Seat Tether Anchor (dinette), Detectors/Alarms LP leak, smoke, carbon monoxide, Fire Extinguisher 10 BC, Ground Fault Interrupter , Lights high-mount brakelamps, Lights daytime running, Light(s) courtesy w/wall switch(es), Seat Belts cab, 3-point adjustable, Seat Belts lap (in selected areas), Window escape, Windshield one-piece laminated safety glass				
Security Vault (bedroom) key lockable				
WARRANTY*				
12-month/15,000-mile basic limited warranty; 36-month/36,000-mile limited warranty on structure; 10-year limited parts & labor warranty on roof skin*				

- The height of each model is measured to the top of the tallest standard feature and is based on the curb weight of a typically equipped unit. The actual height of your vehicle may vary by several inches depending on chassis or equipment variations. Please contact your dealer for further information.
- Vectra floorplans feature a wide-body design — over 96 inches. In making your purchase decision, you should be aware that some states restrict access on some or all state roads to 96 inches in body width. Before making your purchase decision, you should confirm the road usage laws in the states of interest to you.
- The load capacity of your motor home is designated by weight, not by volume, so you cannot necessarily use all available space when loading your motor home.
- Capacities are based on measurements prior to tank installation. Slight capacity variations can result due to installation applications.

- Capacities shown are tank manufacturer's listed water capacity (W.C.). Actual filled LP capacity is 80% of listing due to overfilling prevention device on tank.
 - Actual towing capacity is dependent on your particular loading and towing circumstances, which includes the GVWR, GAWR and GCWR, as well as adequate trailer brakes. Please refer to the Operator's Manual of your vehicle for further towing information.
 - See separate chassis warranty.
 - See your dealer for complete warranty information.
- Not all items available in combination. See dealer for details. NA — Not Available.
Winnebago Industries® continuing program of product improvement makes specifications, equipment, model availability and prices subject to change without notice. Comparisons to other motor homes are based on the most recent information available.



A



SUPERSTRUCTURE® is the term given to Winnebago Industries' structural motor home design and construction. Rather than a single component, it is the culmination of design integration that incorporates steel and aluminum substructures; composite-design laminated floor risers; interlocking joint technology; and Thermo-Panel® floor, roof and sidewalls to form a high-strength, durable vehicle body.

Thermo-Panel manufacturing combines a durable exterior panel with welded aluminum support substructures. The substructures are embedded in a high-density, block-foam insulation core to create a strong, durable, yet lightweight sidewall. Just another Winnebago Industries invention.

- A** Interlocking joint construction utilizes advanced extruded aluminum structural components to create integrated floor-to-sidewall and sidewall-to-roof joints. This design effectively distributes the weight of the walls and roof, making a stronger and more durable body than competitor designs that rely on screws to carry the weight.
- B** The foundation substructure assembly is precision-aligned to maximize strength and cross-coach support as well as durability.
- C** Laminated risers feature a welded aluminum core for improved strength and provide a stable base for the floor structure and storage compartments.
- D** Critical steel components are treated using an advanced electrodeposition coating process that provides superior corrosion protection.



One-year-old Winnebago Industries' fiberglass roof



One-year-old competitor's rubber roof

BUILT TO A HIGHER STANDARD.

The 2007 Vectra features a crowned, one-piece fiberglass roof skin backed with a 10-year limited parts-and-labor roof skin warranty. Fiberglass offers superior strength, attractiveness and durability compared to rubber roofs found on many competitive models. Over time, rubber roofs are susceptible to chalking, streaking and degradation, and have less puncture and tear resistance than fiberglass.



Take a Tour We're proud of our process, our state-of-the-art facilities and the people who make Winnebago Industries number one. We invite you to visit our factory in Forest City, Iowa, for a firsthand look at the dedication and technology behind every motor home we build.



Recognized Quality The Recreation Vehicle Dealer Association annually rates RV manufacturers and awards the Quality Circle award to manufacturers who provide exceptional products, service and support. Winnebago Industries is proud to be the only manufacturer to receive this award every year since its inception.



Committed to Service We back our motor homes with the industry's best service after the sale.

- 12-month/15,000-mile basic limited warranty
- 36-month/36,000-mile limited warranty on structure
- Standard 10-year limited parts-and-labor roof skin warranty
- Complimentary 24-hour roadside assistance program
- TripSaver Fast Track Parts. TripSaver guarantees that in-stock warranty parts ship directly to your dealer within 24 hours.
- National dealer service network

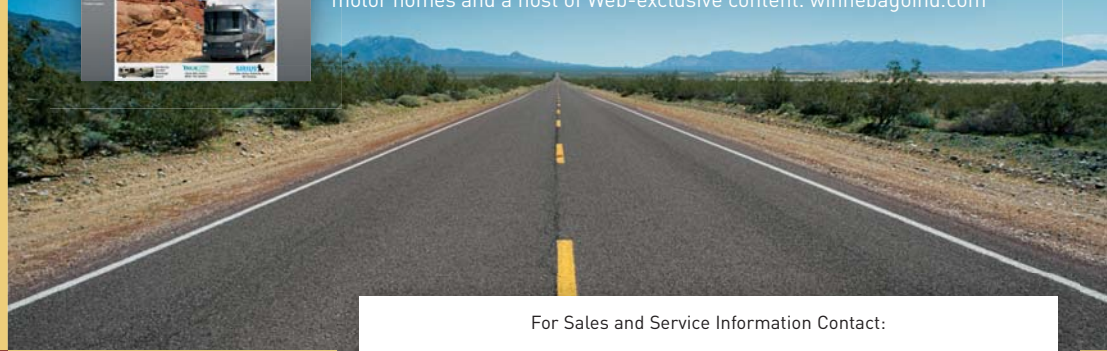


WIT Club Winnebago owners are like family. Joining the Winnebago-Itasca Travelers is a great way to meet and travel with other Winnebago enthusiasts. Members enjoy:

- Caravans and rallies
- Local and state group activities
- RV travel benefits



Visit the Web Visit us on the Web for more information on all of our motor homes and a host of Web-exclusive content. winnebagoind.com



For Sales and Service Information Contact:

Built proudly by



NYSE listing: WGO