



Glass Furniture Fittings

**Glass Wire Display Lighting Hardware
Glass Wire/Rod Fittings
Glass Hinges, Supports & Brackets
Glass Furniture Locks
Glass Aluminium Profiles**



Armstrong L101/W Lighting Hardware for Wire Display System

- The holder length between two rods is adjustable(300mm~400mm)
- The lamp stand could rotate 180 degree
- Power by the safer DC
- For dia. 2.0mm or 2.5mm
- Maximum Lamp Power: 20W

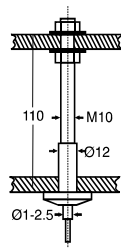
Contents

1. Wire holder – 2pcs
2. Lamp's holder – 1pc
3. Steel bar (200mm) – 2pcs
4. PVC washer – 2pcs



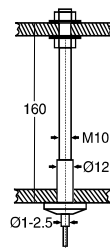
Pag 1901 Ceiling base mount

Material - Brass/Iron
Finish - CP,SS



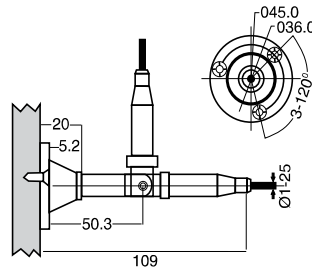
Pag 1902 Top assembly with 7"long stud

Material - Brass/Iron
Finish - CP, SS



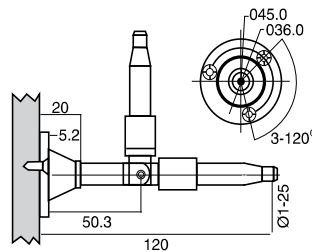
Pag 1903 Hanger pipe

Material - Brass
Finish - CP, SS



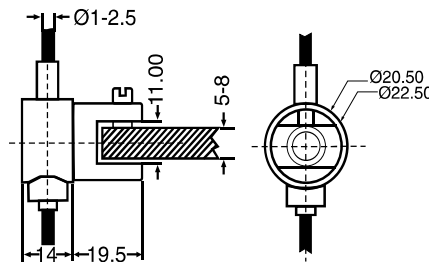
Pag 1904 Hanger pipe with tensioner

Material - Brass
Finish - CP, SS



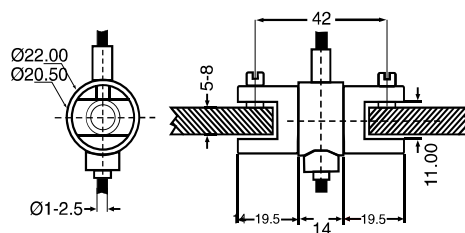
Pag 1905 Outside glass support

Material - Brass
Glass Thickness - 10mm, 12mm
Finish - CP, SSS



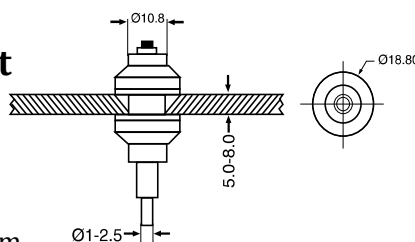
Pag 1906 Middle glass support

Material - Brass
Glass Thickness - 10mm or 12mm
Finish - CP, SSS



Pag 1907 Bored hold base support

Material - Brass
Glass Thickness - 10mm to 12mm
Finish - CP, SSS



Pag 1908 Wire

3 metres roll = 1pcs

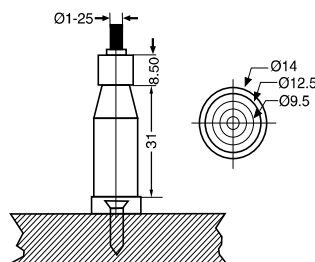
5 metres roll = 1pcs

Material - St. Steel
Thickness - 2mm

(Other sizes available on request)

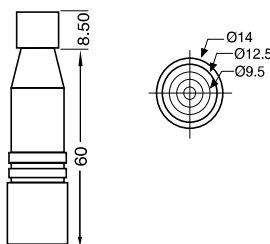


Pag 1909 Floor fixed base



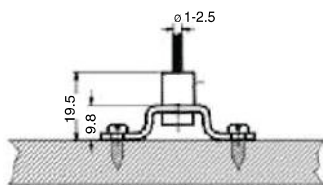
Material - Brass
Finish - CP, SSS

Pag 1910 Bottom assembly with tensioner



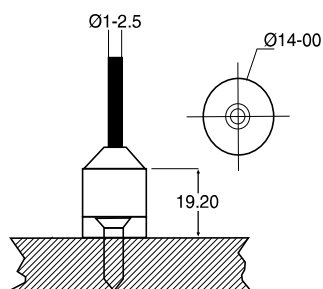
Material - Brass
Finish - CP, SSS

Pag 1911 Floor fixed base



Material - SS
Finish - CP, SSS

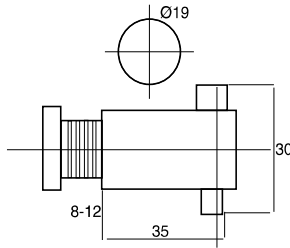
Pag 1912 Floor fixed base



Material - Brass
Finish - CP, SSS

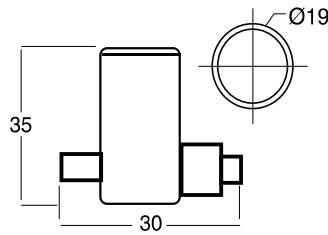
Pag 1913 Mirror /photo frame holder

Material - Brass
Glass Thickness - 8mm to 12mm
Finish - CP, SSS



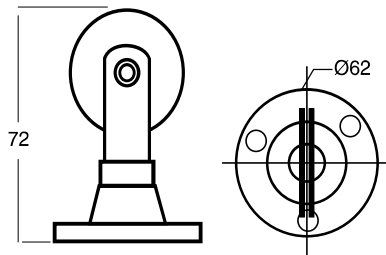
Pag 1914 Pipe holder

Material - Brass
Pipe Thickness - 19mm
Finish - CP, SSS



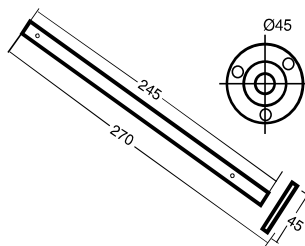
Pag 1916 Wall mounted pulley

Material - Brass/SS
Finish - CP, SSS



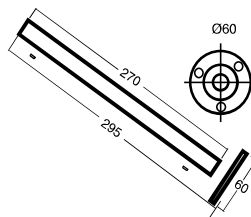
Pag 1917 Spacer rod

Material - Brass/SS
Finish - CP, SSS



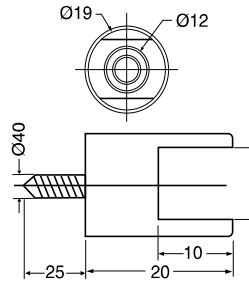
Pag 1918 Wall mounted wire rope holder

Material - Brass/SS
Finish - CP, SSS



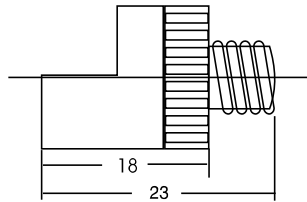
Pag 1915 Glass wall bracket

Material - Brass/SS
Glass Thickness - 10mm to 12mm
Finish - CP, SSS



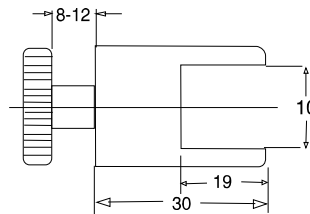
Pag 1919 Self button for glass showcase

Material - Brass/SS
Glass Thickness - 10mm to 12mm
Finish - CP, SSS



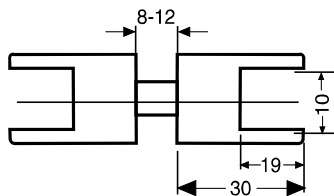
Pag 1920 Partition glass bracket for single side

Material - Brass/SS
Glass Thickness - 10mm to 12mm
Finish - CP, SSS



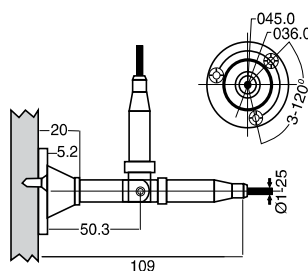
Pag 1921 Partition glass bracket for double side

Material - Brass/SS
Glass Thickness - 10mm to 12mm
Finish - CP, SSS



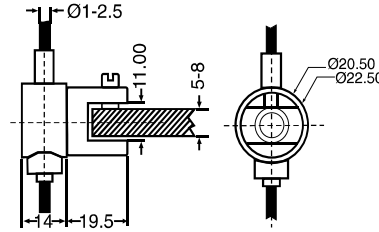
Pag 1922 Hanger Pipe for Rod fitting

Material - Brass
Finish - CP, SSS



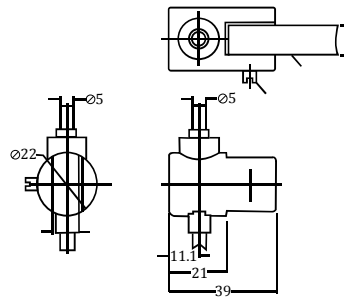
Pag 1923A Outside glass support Rotating

Material - Brass
Glass Thickness - 10mm, 12mm
Finish - CP, SSS



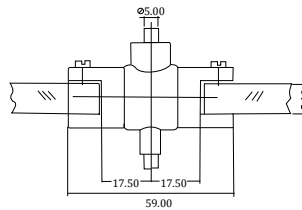
Pag 1923B Outside glass support Fixed

Material - St. Steel, Brass
Glass Thickness - 10mm, 12mm
Finish - CP, SSS



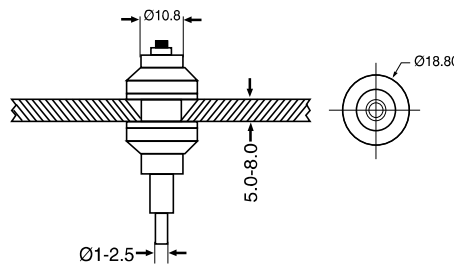
Pag 1931 Middle glass support base double side -Rotating

Material - Brass
Glass Thickness - 10mm, 12mm
Finish - CP, SSS



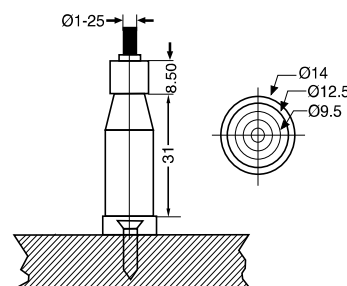
Pag 1924 Bored hole bracket

Material - Brass
Glass Thickness - 10mm, 12mm
Finish - CP, SSS

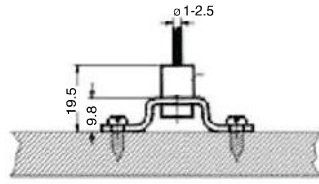


Pag 1925 Floor fixed base

Material - Brass
Finish - CP, SSS

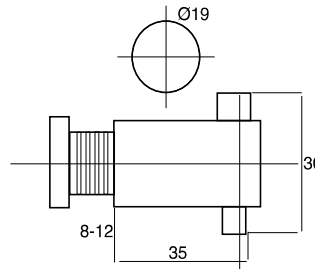


Pag 1927 Floor Fixed Base



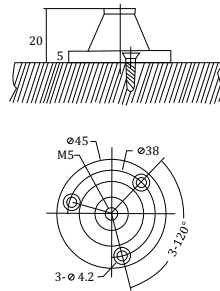
Material - SS
Finish - CP, SSS

Pag 1928 Mirror/Photo Frame Holder



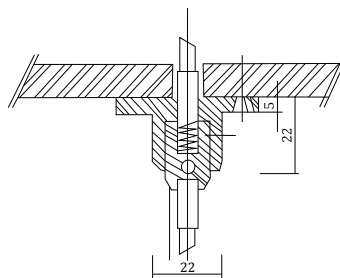
Material - Brass
Glass Thickness - 6mm to 12mm
Finish - CP, SSS

Pag 1929 Rod Base Mount



Material - Brass
Finish - CP, SSS

Pag 1930 Ceiling / Base Mount



Material - Brass
Finish - CP, SSS

Pag 1926 Rod



Material - St. Steel
Length - 1Meter
Finish - Chrome, SS

Pag Q0112

Unit :

4 Piece Sets

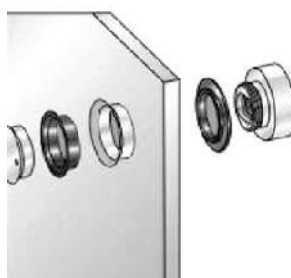
Material - Brass/Swarovski Crystal
Size - 20mm, 40mm
Crystal - Clear, Blue, Green
Finish - SS, AB, CP, BG



Pag 1413

**Fixing connector
between glass & wall**

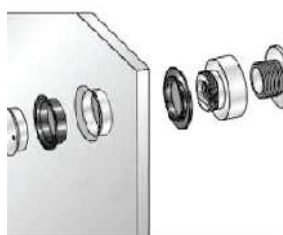
Material - St. Steel
Glass Thickness - 10mm to 12mm
Not adjustable - 6mm
Finish - SSS



Pag 1414

**Fixing connector
between glass & wall**

Material - St. Steel
Glass Thickness - 10mm to 12mm
Sizes Available - A - 8.5 to 10.5 C - 12.5 to 14.5
 B - 10.5 to 12.5 D - 14 to 18mm
Finish - SSS



Pag 1412

Mirror stud

Material - St. Steel
Dia - 19,25,30,40mm
Length - 25,50,75,100mm
Finish - SSS



Pag 2019

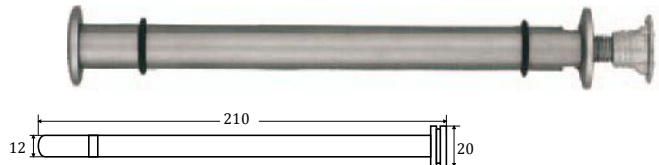
Center Self Support

Material - Iron
Finish - Nickel Plated



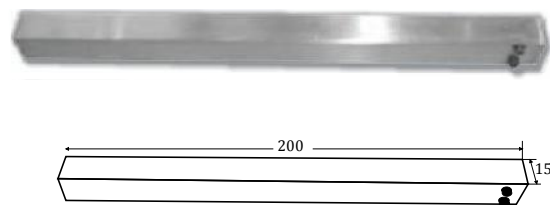
Pag 2001 Round rod glass holder

Material - Brass, St. Steel
Finish - CP, SSS



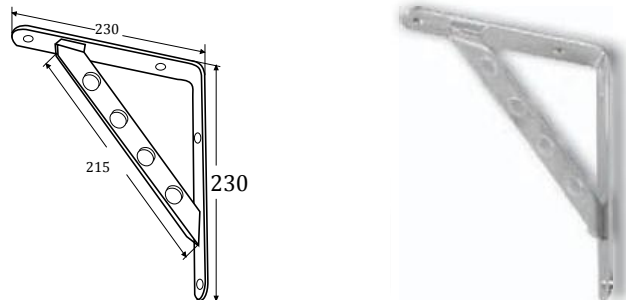
Pag 2002 Square rod top spacer & glass holder

Material - Brass, St. Steel
Finish - CP, SSS



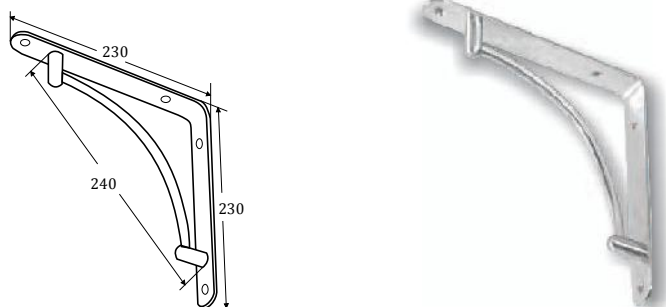
Pag 2003 Triangle bracket

Material - St. Steel
Finish - SSS



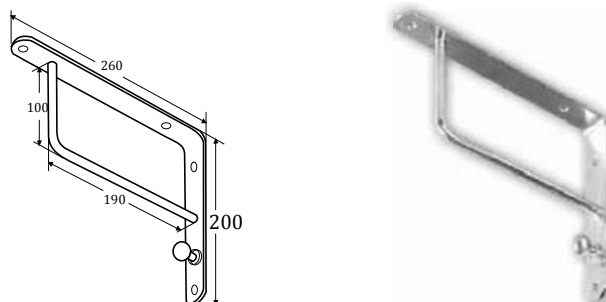
Pag 2004 Triangle bracket

Material - St. Steel
Finish - SSS

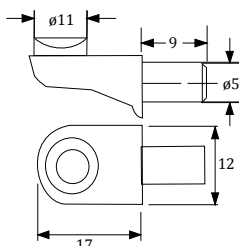


Pag 2005 Triangle bracket

Material - St. Steel
Finish - CP, SSS

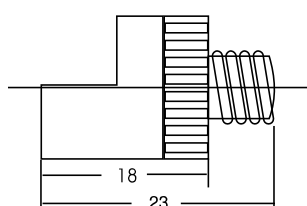


Pag 2007
Glass board support



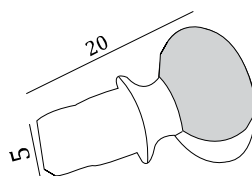
Material - Zinc Alloy, Plastic
Finish - Nickel Plated

Pag 1919
Self button for glass showcase



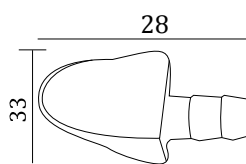
Material - Brass/SS
Glass Thickness - 10mm to 12mm
Finish - CP, SSS

Pag 2020
Board Support



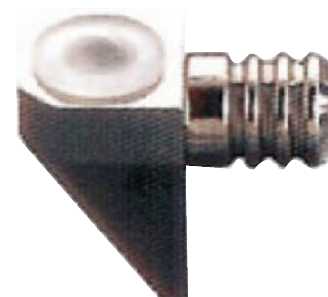
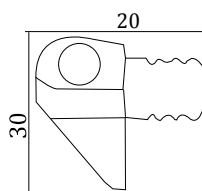
Material - Zinc alloy
Finish - Nickel Plated

Pag 2012
Self Button SS Small, Large



Material - Zinc alloy
Finish - CP, SSS

Pag 2013
Self Button



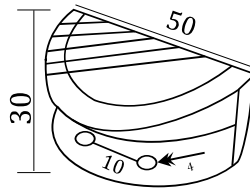
Material - Zinc alloy
Size - Small, Medium, Large
Finish - SS

**Pag 2026
Bracket SS**



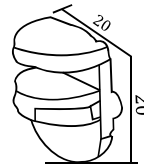
Material - St. Steel
Finish - SSS

**Pag 2017
Glass Bracket**



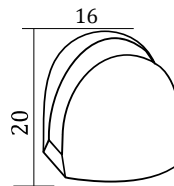
Material - Zamak
Glass Thickness - 8mm
Finish - GP, GP/PG

**Pag 2024
Adjustable Self Button Nickel Plated**



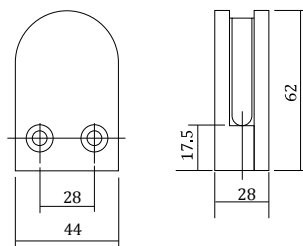
Material - Zinc alloy, Plastic
Glass Thickness - 8mm to 10mm
Finish - Zinc Plated, Clear

**Pag 2021
Glass Bracket**



Material - Zinc
Glass Thickness - 8mm
Size - Small, Large
Finish - SN, AB

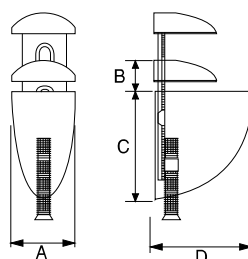
**Pag 2010
Glass bracket**



Material - St. Steel
Glass Thickness - 8mm to 10mm
Weight Capacity - Max. 35kgs
Finish - SSS

Pag 2006 Glass bracket

Material - Zinc Alloy, Plastic, Steel
Glass Thickness - up to 12mm
Size - small, medium, large
Finish - CP, SSS

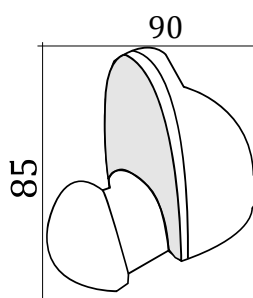


	A	B	C	D
Small	30	M4X20	48	54
Medium	31	M4X29	55	75
Large	40	M4X40	73	105



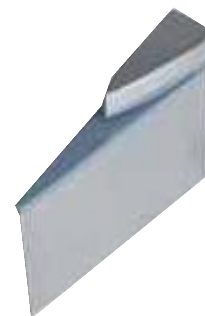
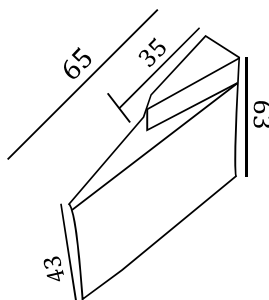
Pag 2018 Adjustable Glass Bracket

Material - Zamak
Glass Thickness - 6mm to 19mm
Finish - SC



Pag 2025 Adjustable Glass Bracket

Material - Zinc
Glass Thickness - 6mm to 19mm
Size - Small, Medium, Large
Finish - BSN



Pag 2023 Glass Board Clamp

Material - Zinc alloy, Plastic
Glass Thickness - 8mm to 19mm
Size - Small, Large
Finish - Chrome Plated



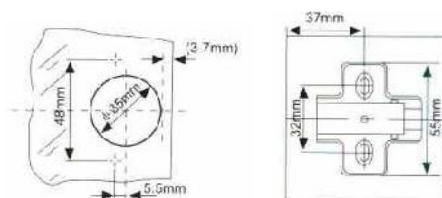
Pag Clip-On Hydraulic Buffering Hinges For Glass Doors

- Opening Angle : 95[^]
- Material : Steel
- Finish : Chrome Plated
- Hinge Arm Assembly : Clip On Mounting Plate
- Feature : With Auto closing & Self Closing
- Cycles Tested : 50000 Cycles
- Diameter of Hinges : 35mm
- Range of Glass Thickness : 6mm
- Face Panel Measurement : 3 to 7mm
- Unit : Pairs



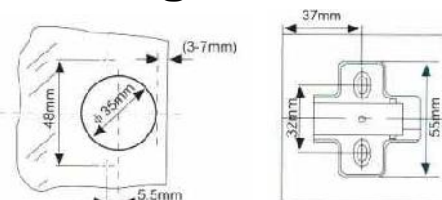
Pag 2130 0[^] Hydraulic Hinge

Full Overlay
Crank : 0[^]



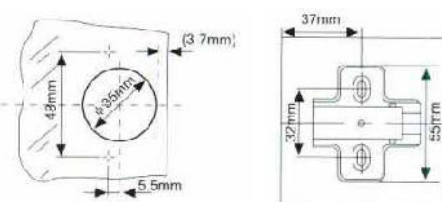
Pag 2131 8[^] Hydraulic Hinge

Half Overlay
Crank : 8[^]



Pag 2132 17[^] Hydraulic Hinge

Insert
Crank : 15[^]



Pag Ferrari 2106 Slide On 17[^] with CP Cap

Ferrari Code : C95315CNFZG

- Opening angle:95°
- Depth of hinge cup:26mm
- Possible drilling distance on the door :4-7mm
- Range of door thickness:6-8mm



Pag 2101

90° Glass to wall hinge

Material : Brass, St. Steel
Glass Thickness : 6mm, 8mm
Weight Capacity : Max. 15kgs
Finish : CP, SN



Pag 2104

Wall to glass hinge 8mm

Material : St. Steel
Glass Thickness : 6mm to 8mm
Weight Capacity : 20kg
Finish : SSS



Pag 2128

Glass Catcher Hinges

Material : Zinc alloy
Glass Thickness : 8mm to 10mm
Finish : SSS



Pag 2102

Glass hinge top bottom

Material : Zinc
Glass Thickness : 5mm
Finish : SS



Pag 2107

Glass hinge

Material : Zinc
Glass Thickness : 6mm to 8mm
Finish : CP



Pag 2105

Glass to glass hinge 8mm

Material : St. Steel
Glass Thickness : 6mm to 8mm
Weight Capacity : 20kg
Finish : SSS



Pag 2108

Glass pivot

Material : Zinc
Glass Thickness : 6mm to 8mm
Finish : SSS



Pag 2125

Glass Door Pivot

Material : Zinc alloy
Glass Thickness : 6mm to 8mm
Finish : Chrome Plated



Pag 2120

Glass
Pivot Hinges

Material : St. Steel
Glass Thickness : 8mm to 10mm
Finish : SSS



Pag 2127

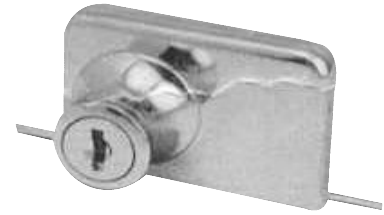
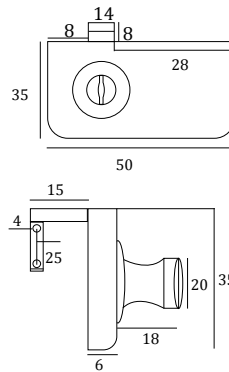
Glass Fittings Manet Pivot
For Small Doors

Material : St. Steel
Glass Thickness : 8mm to 10mm
Finish : SSS



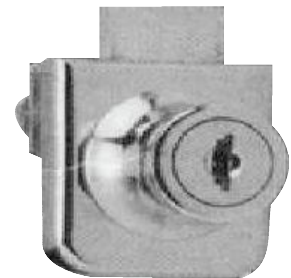
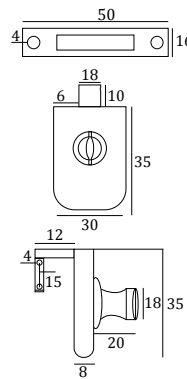
Armstrong 417-8 Glass Double door lock w/o boring hole

Material : Zinc
Finish : Gp, Cp
Application : Cabinet Door Lock
 Without Boring a Hole on Door
 Cylinder Can Be Used as Handle



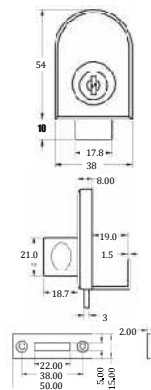
Armstrong 407-8 Glass Door lock w/o boring hole

Material : Zinc
Finish : BG
Application : Cabinet Door Lock Without Boring a Hole
 on Door, Cylinder Can Be Used as Handle



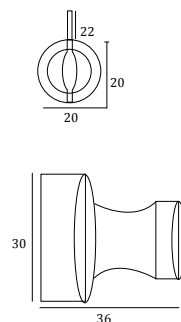
Armstrong 408-19 Glass door lock w/o boring hole

Material : Zinc
Size : 19mm (408-19), 8mm (Pag 2110)
Finish : BG, CP
Application : Cabinet Door Lock Without Boring a Hole
 on Door, Cylinder Can Be Used as Handle

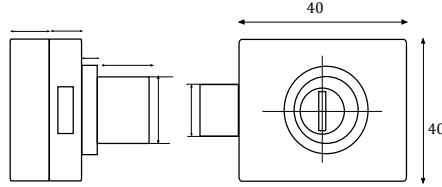


Armstrong 420 Glass lock (4-8mm)

Material : Zinc
Finish : Gp, Cp
USP : Cylinder can be used as a handle

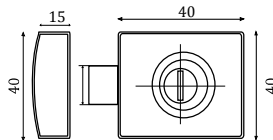


Pag 2117
Glass door lock
with brass ultra key



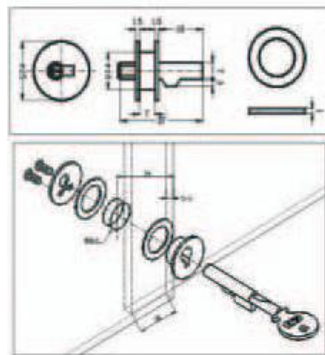
Material : Zinc alloy
Glass Thickness : Up to 12mm
Finish : SS

Pag 2118
Glass double door lock with
brass ultra key



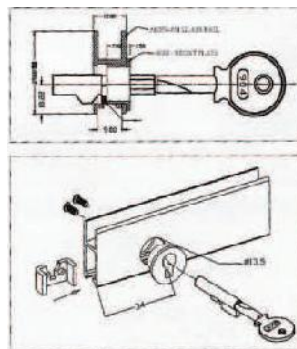
Material : Zinc alloy
Glass Thickness : Up to 12mm
Finish : SS

Pag 2112A
Sliding Glass Door Lock



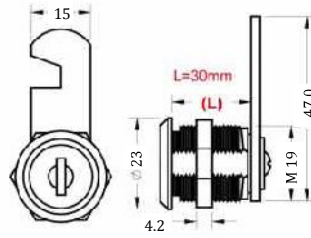
Cylinder : Brass, Nickel Plated
Key : Steel, Chrome Plated
Glass Thickness : 5mm
Finish : Chrome Plated

Pag 2112B
Sliding Glass
Door Lock



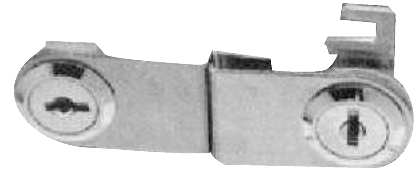
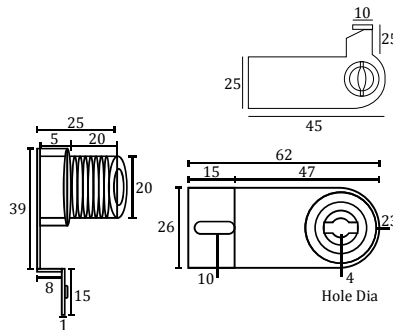
Cylinder : Brass, Nickel Plated
Key : Steel, Chrome Plated
Glass Thickness : 5mm to 6mm
Finish : Chrome Plated

Armstrong 505 Cam Lock



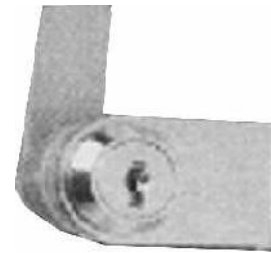
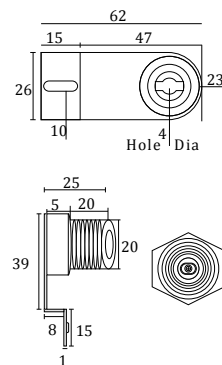
Material : Zinc
Size : 30mm(505-30), 16mm(505-16),
 12mm(Pag 2116 - with brass ultra keys)
Finish : CP, GP

Armstrong 410-2 Glass Double door swinging lock



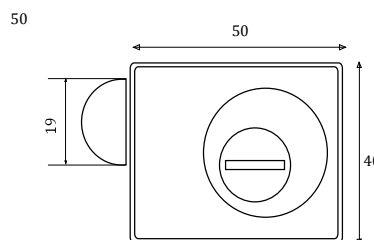
Material : Zinc
Finish : Gp, Cp

Armstrong 410-1 Cabinet Glass Door Lock Swinging



Material : Zinc
Finish : CP
Application : Glass Cabinet Lock

Pag 2119 Glass door lock with base plate with brass ultra key



Material : Zinc alloy
Glass Thickness : Up to 12mm
Finish : SS

Material : Aluminium
Finish : Aluminium & SS
Profile Length : 3 mtrs
Cut Degree Required : 45° from both ends

Suitable for fixing with special 3524 slide on concealed hinges
Gasket Pre-installed within the profile.

3523: Frame Profile with slot for sliding on hinge Convenient to install

Provided with Plastic Profile for smooth fixing of glass or panel.

3525: Corner Bracket for 3523 High on strength made of steel

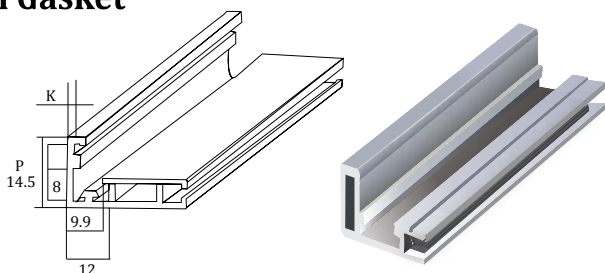
3524 : Concealed Slide on Hinges for fixing 3523 profile shutters
 No milling required to fix these hinges.

Application: Aluminium Frame Profile for cabinet
 Simply cut the frame ends with a 45°, slide the corner connectors into the ends & slide the hinges into the sides.

No milling required to attach hinges to frame



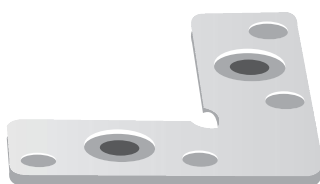
Pag 3523 Aluminium Frame Profile with Gasket



Plastic Cover Profile For 3523



Pag 3525 Corner Bracket



Application : For Fixing Profile Together
Fitting Side : On Four corners of each shutter
Material : Steel
Cut Degree : 45

Pag 3524 Hinges in 0° & 8° CRANK For 3523 Profile



Material : Aluminium
Profile Length : 3 mtrs
Cut Degree Required : 45° from both ends

Suitable for fixing with standard European furniture concealed hinges.
Gasket Pre-installed within the profile.

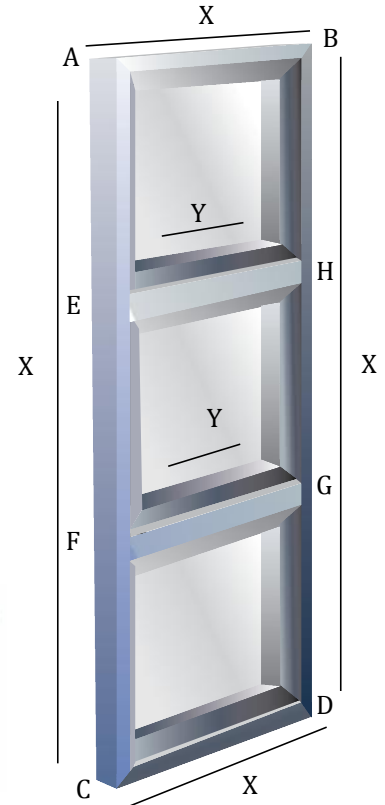
3501 : Profile for sides X
 Also suitable for single shutters if used on all four sides

3532 : Corner Bracket for 3501 (For corners A, B, C, D)
 High on strength made of steel

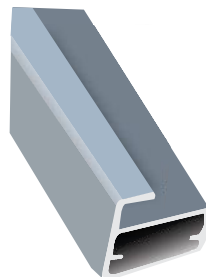
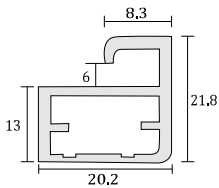
3517 : Common Profile Between two shutters (Side Y)
 Unique application, Holds Glass From both Sides

3518 : Corner Bracket for 3517 (For corners E, F, G, H)
 High on strength made of Aluminium

Suitable for Use with
 Standard: 3511 - 0°, 3512 - 8°, 3513 - 17°
 Hydraulic: 3541 - 0°, 3542 - 8°, 3543 - 17°

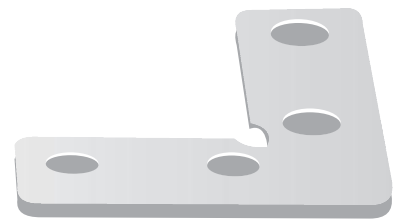


Pag 3501 Aluminium Frame Profile with Gasket

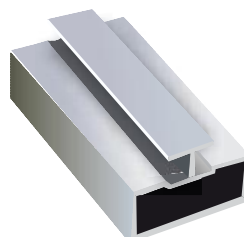
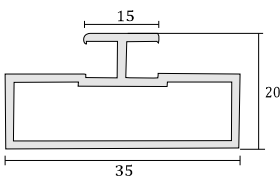


Finish : Aluminium, SS

Pag 3532 Corner Bracket for 3501

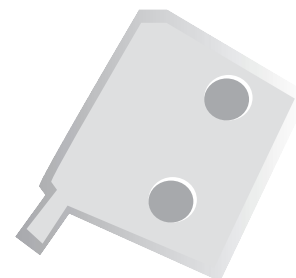


Pag 3517 Center Profile with Gasket



Finish : Aluminium

Pag 3518 Corner Bracket for 3517



Material : Aluminium

Finish : Aluminium & SS

Glass Thickness : 4mm

Profile Length : 3 mtrs

Cut Degree Required : 45° from both ends

Suitable for fixing with standard furniture concealed hinges.

Gasket Pre-installed within the profile.

Item Details:

3539 : Aluminium Frame Profile

3540 : Aluminium Handle Profile

Fits with 3539 model using the same 3548B corner

brackets

3548B : Corner Bracket for 3539 & 3540

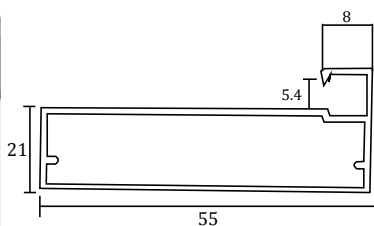
High on strength made of steel

Hinges : Normal: 3511 - 0°, 3512 - 8°, 3513 - 17°

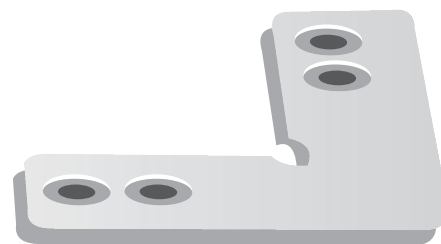
Hydraulic: 3541 - 0°, 3542 - 8°, 3543 - 17°



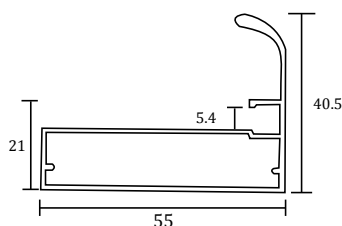
Pag 3539 Aluminium Frame Profile



Pag 3548B Conector Corner Bracket for 3539 & 3540



Pag 3540 Aluminium Handle Profile



Suitable for Use with all types of standard wooden and aluminium door hinges



Material : Aluminium

Finish : Aluminium

Glass Thickness : 4mm

Profile Length : 3 mtrs

Cut Degree Required : 45° from both ends

Suitable for fixing with standard furniture concealed hinges.

Gasket Pre-installed within the profile.

Item Details:

3537 : Aluminium Frame Profile

3538 : Aluminium Handle Profile

Fits with 3537 model using the same 3548A corner brackets

3548A : Corner Bracket for 3537 & 3538

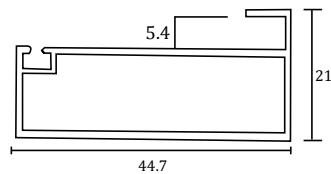
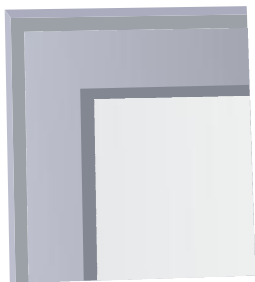
High on strength made of steel

Hinges : Normal: 3511 - 0°, 3512 - 8°, 3513 - 17°

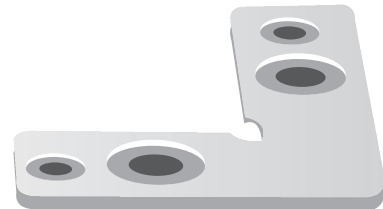
Hydraulic: 3541 - 0°, 3542 - 8°, 3543 - 17°



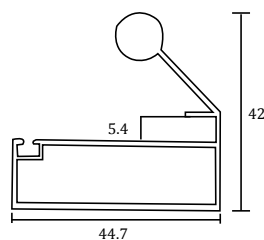
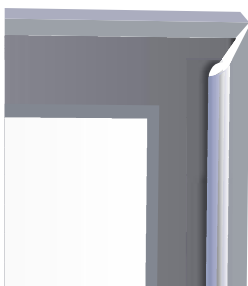
Pag 3537 Aluminium Frame Profile



Pag 3548A Conector



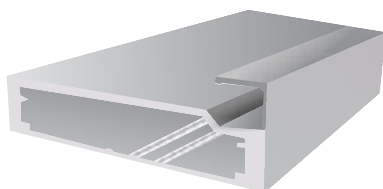
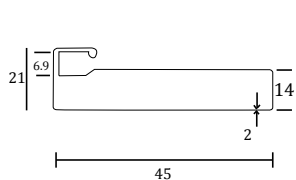
Pag 3538 Aluminium Handle Profile



Suitable for Use with all types of standard wooden and aluminium door hinges



Pag 3533 Aluminium Frame Profile



Material : Aluminium
Profile Length : 3 mtrs
Cut Degree Required : 45° from both ends
Suitable for fixing with standard European furniture concealed hinges.
Gasket Pre-installed within the profile.

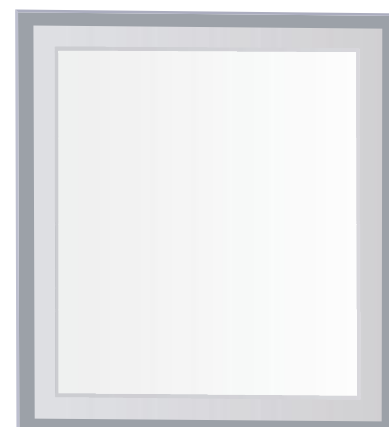
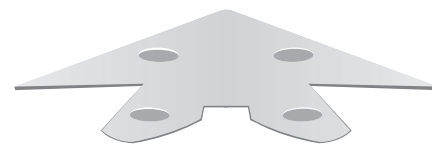
Item Details:

3533 : Aluminium Frame Profile

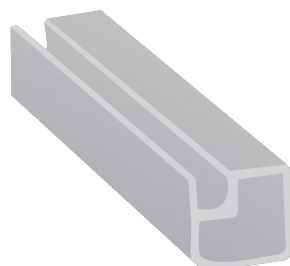
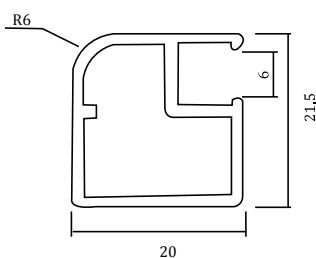
3534 : Corner Bracket for 3533

High on strength made of steel

Hinges : Suitable for Use with all types of standard wooden and aluminium door hinges



Pag 3503 Aluminium Frame Profile



Material : Aluminium
Profile Length : 3 mtrs
Cut Degree Required : 45° from both ends
Suitable for fixing with standard European furniture concealed hinges.
Gasket Pre-installed within the profile.

Item Details:

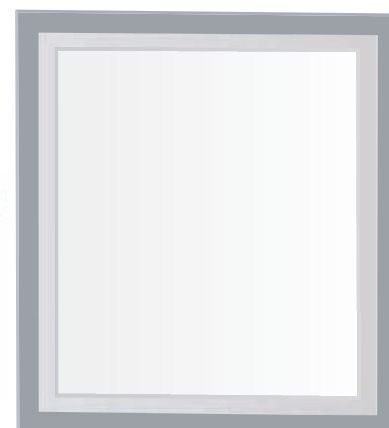
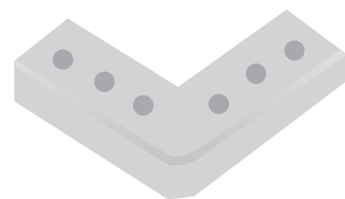
3533 : Aluminium Frame Profile

3534 : Corner Bracket for 3533

High on strength made of steel

Hinges : Standard: 3511 - 0°, 3512 - 8°, 3513 - 17°
 Hydraulic: 3541 - 0°, 3542 - 8°, 3543 - 17°

Finish : Aluminium, SS



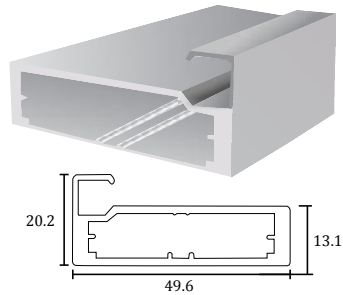
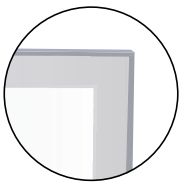
Material : Aluminium
Finish : Aluminium & SS
Glass Thickness : 4mm
Profile Length : 3 mtrs
Cut Degree Required : 45° from both ends
Suitable for fixing with standard European furniture concealed hinges.
Gasket Pre-installed within the profile.

Item Details:

- 3528** : Aluminium Frame Profile
Also suitable for single shutters if used on all four sides
- 3529** : Aluminium Handle Profile
Fits with 3528 model using the same 3534 corner brackets
- 3534** : Corner Bracket for 3528 & 3529
High on strength made of steel
- Hinges** : Normal: 3511 - 0°, 3512 - 8°, 3513 - 17°
Hydraulic: 3541 - 0°, 3542 - 8°, 3543 - 17°

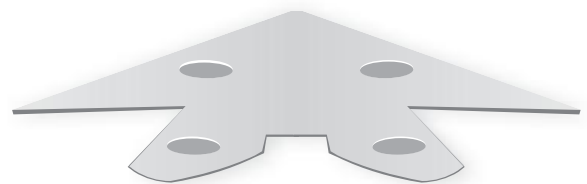


Pag 3528 Frame Profile

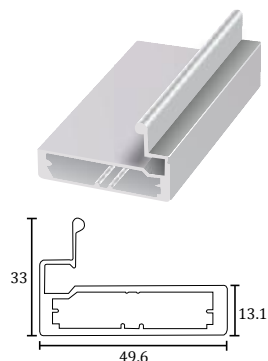
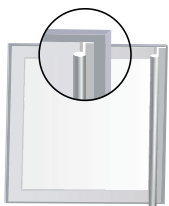


Finish : Aluminium, SS

Pag 3534 Connector Corner Bracket for 3528 & 3529



Pag 3529 Aluminium Handle Profile



Finish : Aluminium, SS

Suitable for Use with all types of standard wooden and aluminium door hinges

