



### Credit Cards



Credit card payments are welcome. Alternatively we have a selected range of products available to buy on line at [www.immersionheaters.com](http://www.immersionheaters.com)

### Quality Assurance

The pursuit of excellence in satisfying and exceeding customer requirements is the driving force behind Heatex.

With a dedication to Total Quality Management from our workforce and ISO 9001 : 2000 accreditation, our customers can be confident that the system and commitment within Heatex will ensure our products, timescales and prices demonstrate a thorough understanding of your needs.

See our complete range and technical datasheets @ [www.exheat.com](http://www.exheat.com)

Heatex Ltd  
Thrextan Road Industrial Estate  
Watton Thetford Norfolk IP25 6NG UK  
Tel: +44 (0) 1953 886200  
Fax: +44 (0) 1953 886222  
Email: [sales@exheat.com](mailto:sales@exheat.com)  
[www.exheat.com](http://www.exheat.com)



Certificate No. FM26078

Sales Hotline: +44 (0) 1953 886210

Heatex Electric Heaters and Control Systems



Global Heating Specialists



Heatex Electric Heaters and Control Systems



## Heatex Industrial

Heatex Industrial Division offers a fast-track solution to industry's wide and varied requirements for electrical heating systems.

### ATEX

All hazardous area heaters manufactured by Heatex are certified to the ATEX Directive 94/9/EC. This directive became mandatory for all equipment put into service within the EU in July 2003. For more information on the requirements of the ATEX Directive contact sales@exheat.com.

### PRODUCT RANGE

Hazardous area air warmers, enclosure heaters and convector heaters.

Flameproof radiators, fan heaters, water boilers, immersion heaters and thermostats.

Safe area fan heaters, industrial convectors, in line heaters.

Vented and unvented storage water heaters, vat heaters.

Industrial, domestic, baptistry and portable immersion heaters.

Externally adjustable flameproof immersion heaters, thermostats and radiators.

Drum heaters silicone rubber and jacketed, IBC heaters, hazardous area.

Heating elements rod and core type, trace heating, thermostats, control panels.

Hazardous area safety switches and cable glands.

### INDIVIDUAL SOLUTIONS and CUSTOM BUILT

Because our standard range of products may not exactly meet our customer's requirements; Heatex Sales Engineers and Designers will, through consultation with their customers, design a custom built Hazardous or Safe area electric heater. This will ensure our clients procure the optimum heater for their applications.

See our complete range and technical datasheets @ [www.exheat.com](http://www.exheat.com)



## Contents

▶ Air Heaters	3-6
▶ Water Heaters	7-10
▶ Immersion / Line Heaters	10-13
▶ Drum Heaters	14-16
▶ Rod Elements / Trace Heating	17-18
▶ Controls	18-19
▶ Accessories	19

Order Heatex's latest catalogue online now

See our complete range and technical datasheets @ [www.exheat.com](http://www.exheat.com)

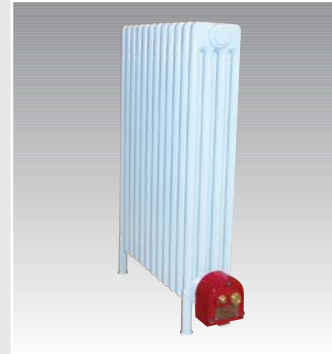
### FAW Hazardous Area Air Warmers



- ▶ ATEX certified  $\text{Ex}$  II 2 G EEx'e' II T2 to T4
- ▶ 110V, 220 - 254V single phase, and 400 - 440V 3 phase
- ▶ Self colour stainless steel or painted finish
- ▶ Individually replaceable elements
- ▶ Optional wall mounting kit
- ▶ 250W to 3000W models available

See our complete range and technical datasheets @ [www.exheat.com](http://www.exheat.com)

### FLR Flameproof Liquid Filled Radiators



- ▶ ATEX certified  $\text{Ex}$  II 2 G EEx'd' IIC T6
- ▶ Certified DIP B21 for dust
- ▶ Externally adjustable control thermostat
- ▶ Long life Incoloy 825 elements
- ▶ Powder coated white decorative finish
- ▶ Also available in standard, non hazardous construction
- ▶ 1kW to 3kW models available

Order Heatex's latest catalogue online now

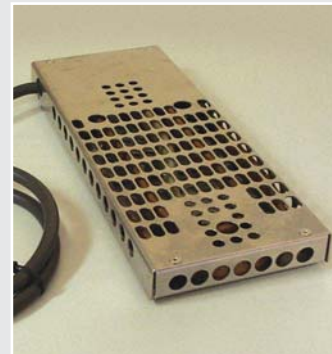
See our complete range and technical datasheets @ [www.exheat.com](http://www.exheat.com)

### FUH Flameproof Fan Heaters



- ▶ ATEX certified  $\text{Ex}$  II 2 G EEx'd' IIC T3
- ▶ Efficient liquid to air heat exchanger
- ▶ Over temperature protection
- ▶ Adjustable angle outlet louvres
- ▶ Typical applications include oil refineries, offshore platforms and munitions stores
- ▶ 6kW to 30kW models available

### HEF Hazardous Area Enclosure Heaters



- ▶ ATEX certified  $\text{Ex}$  II 2 G EEx'e' II T4
- ▶ Supply voltage 110V or 220-240V
- ▶ Self regulating
- ▶ Low surface temperature
- ▶ Can be installed anywhere within the enclosure
- ▶ 25W to 500W models available





### FCR Hazardous Area Convector Heaters

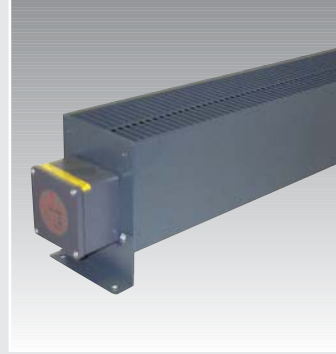


- ▶ ATEX certified  $\text{Ex}$  II 2 G EEx'e' II T2 or T3
- ▶ Floor or wall mounting
- ▶ Small footprint
- ▶ Powder coated finish RAL7032
- ▶ Optional integral room temperature control thermostat
- ▶ 1kW to 3kW models available, 110V, 240V and 415V supply

See our complete range and technical datasheets @ [www.exheat.com](http://www.exheat.com)



### STW Industrial Convector Heaters



- ▶ Heavy duty construction
- ▶ Protective guard included
- ▶ Powder coated steel sheet construction
- ▶ Floor or wall mounting
- ▶ 110 or 240V supply
- ▶ Weatherproof to IP66
- ▶ 1kW to 3kW models available

Order Heatex's latest catalogue online now

### ANB Fan Assisted Air Heaters



- ▶ Wall or floor mounting
- ▶ Adjustable sweep angle
- ▶ 6kW to 17kW models available
- ▶ Factory fitted supply cable and plug
- ▶ Five position selector switch
- ▶ Integral control thermostat

### FWD Flameproof Air Warmers



- ▶ ATEX certified  $\text{Ex}$  II 2 G/D EEx'd' IIC T2-T4
- ▶ 110V or 230/240V single phase
- ▶ Self colour stainless steel or painted finish
- ▶ Individually replaceable elements
- ▶ Optional wall mounting kit
- ▶ 500W to 3000W models available

See our complete range and technical datasheets @ [www.exheat.com](http://www.exheat.com)



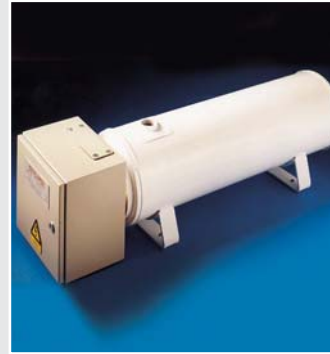
### Unvented or Vented Storage Water Heaters



- ▶ Glass lined steel or copper construction
- ▶ Fully insulated
- ▶ 300 litres to 3000 litres storage volume
- ▶ Direct or indirect
- ▶ Expansion kit supplied (for unvented)

Order Heatex's latest catalogue online now [www.exheat.com](http://www.exheat.com)

### HFW Water Flow Heaters



- ▶ Heavy duty copper cylinder
- ▶ Individually replaceable elements
- ▶ Lagged and clad
- ▶ Fitted with control and run dry protection thermostats
- ▶ Standard range 12kW to 54kW

Order Heatex's latest catalogue online now [www.exheat.com](http://www.exheat.com)

### MLH Inline Water Line Heaters



- ▶ Mild steel or stainless steel
- ▶ Individually replaceable elements
- ▶ Lagged and clad
- ▶ Fitted with control thermostat
- ▶ Standard range 3kW to 12kW
- ▶ ATEX certified EX II 2 G EEX'd' IIC T3-T6

### In Line Process Heaters



- ▶ Available in safe or flameproof construction
- ▶ Rod, cartridge or removable ceramic core options
- ▶ Stainless steel, carbon steel, or copper / brass construction
- ▶ Typical uses include fuel / lube oil, water and compressed air
- ▶ Standard range 3kW to 120kW
- ▶ ATEX certified EX II 2 G EEX'd' IIC T3-T6

Order Heatex's latest catalogue online now [www.exheat.com](http://www.exheat.com)



### RFA-0S Flameproof Oversink Water Heaters



- ▶ ATEX certified  $\text{Ex}$  II 2 G EEx'd' IIC T4
- ▶ Open outlet construction
- ▶ Easy oversink installation
- ▶ Copper cylinder
- ▶ Ideal for hand wash facilities in hazardous areas
- ▶ 2kW/240V single phase

See our complete range and technical datasheets @ [www.exheat.com](http://www.exheat.com)



### FP-U Flameproof Water Boilers



- ▶ ATEX certified  $\text{Ex}$  II 2 G EEx'd' IIC T4
- ▶ Stainless steel construction
- ▶ Drip proof, lever style, tap
- ▶ Dry run protected
- ▶ Ideal for tea making facilities in rest rooms located in hazardous areas
- ▶ 2kW/25 litres

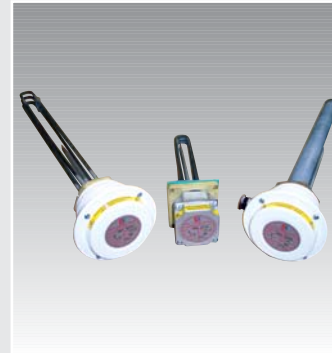
Order Heatex's latest catalogue online now

### FP-RCH Flameproof Cistern Type Water Heaters



- ▶ ATEX certified  $\text{Ex}$  II 2 G EEx'd' IIC T4
- ▶ Integral cold water make up tank
- ▶ 25 litre to 100 litre hot water capacity
- ▶ Open vented construction
- ▶ Typical uses include washrooms and safety showers located in hazardous areas
- ▶ 2kW/240V single phase

### HB Industrial Immersion Heaters



- ▶ 2", 2 1/4" and 2 1/2" BSP. Brass screw plug
- ▶ Rod type 1kW to 18kW
- ▶ Removable core type 1kW to 6kW
- ▶ Bolt on flange fixing
- ▶ Rod type 12kW to 54kW
- ▶ Fitted with control and dry run thermostats

Available for order on line at [www.immersionheaters.com](http://www.immersionheaters.com)

See our complete range and technical datasheets @ [www.exheat.com](http://www.exheat.com)



### RFA Flameproof Immersion Heaters



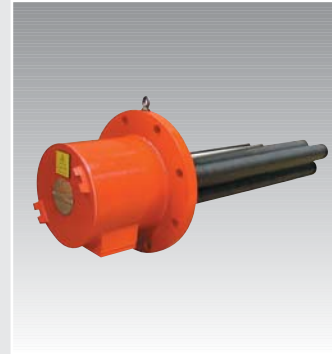
- ▶ ATEX certified  $\text{Ex II 2 G EEx'd' IIC T3-T6}$
- ▶ 2", 2 1/4" and 2 1/2" BSP. Brass screw plug or industry standard flange
- ▶ Rod element type 1kW to 18kW
- ▶ Removable ceramic core type 1kW to 8kW
- ▶ Custom built heaters available on short delivery

See our complete range and technical datasheets @ [www.exheat.com](http://www.exheat.com)

Subject to change without notice



### FP-C Flameproof Immersion Heater

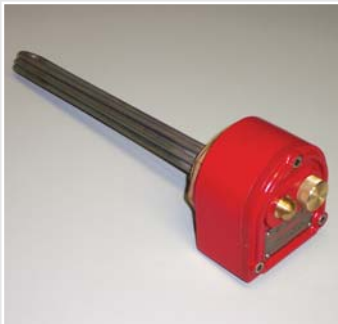


- ▶ ATEX certified  $\text{EX II 2 G/D EEx'd' IIC T3-T6 IP65}$
- ▶ Rod type 1kW to 150kW
- ▶ Removable core type 1kW to 120kW
- ▶ Built in process temperature sensors
- ▶ Stainless steel screw plug or industry standard flange

Order Heatex's latest catalogue online now

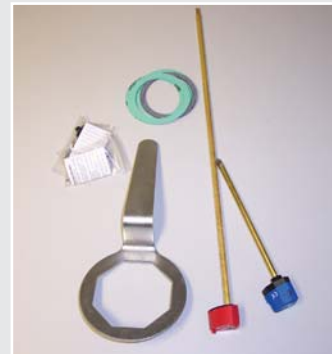
See our complete range and technical datasheets @ [www.exheat.com](http://www.exheat.com)

### Flameproof Immersion Heaters with built in Externally Adjustable Thermostats



- ▶ ATEX certified  $\text{Ex II 2 G/D EEx'd' IIC T3-T6}$
- ▶ Built in externally adjustable thermostat
- ▶ Terminal box can be rotated to allow final cable entry position to be chosen
- ▶ Ambient or process sensing thermostat

### Immersion Heater Accessories



- ▶ 7", 11" and 18" rod thermostats
- ▶ Various capillary thermostats
- ▶ Box and flat spanners
- ▶ Gaskets

Available for order on line at [www.immersionheaters.com](http://www.immersionheaters.com)



### PIH Baptistry/Portable Immersion Heaters



- ▶ Stable, self supporting base
- ▶ 3kW/240V single phase
- ▶ Optional integral control thermostat
- ▶ Robust, stainless steel construction
- ▶ Long life, incoloy 825 element
- ▶ Ideal for baptismal pools, drum heating and vat heating

Available for order on line at [www.immersionheaters.com](http://www.immersionheaters.com)

Order Heatex's latest catalogue online now [www.exheat.com](http://www.exheat.com)

### HSSD Side Drum Heaters (silicone rubber)



- ▶ Silicone rubber insulated
- ▶ Double insulated construction
- ▶ 0 - 120°C thermostat
- ▶ 2 metre power cable

Order Heatex's latest catalogue online now [www.exheat.com](http://www.exheat.com)

### HV Vat Heaters



- ▶ Single phase and three phase models
- ▶ Steel, titanium, stainless steel and PTFE coated elements
- ▶ IP55 terminal enclosure
- ▶ Optional integral control thermostat
- ▶ Custom built heaters to suit clients tank dimensions
- ▶ 1kW to 18kW models available

### Side Drum Heaters (jacket)



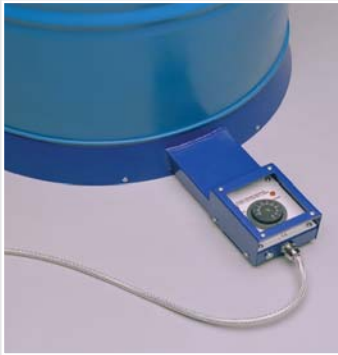
- ▶ 25L, 50L, 105L and 200L sizes
- ▶ 0 - 90°C or 20 - 220°C options
- ▶ Adjustable quick release buckles
- ▶ 3 metre braided power cable

Order Heatex's latest catalogue online now [www.exheat.com](http://www.exheat.com)





### HBD Base Drum Heaters



- ▶ Even heat over platten area
- ▶ 20 - 150°C thermostat
- ▶ 110V or 230V options
- ▶ 2 metre armoured power cable

See our complete range and technical datasheets @ [www.exheat.com](http://www.exheat.com)

### HIDH Hazardous Area Drum Heaters



- ▶ ATEX certified EEx'e' II T3
- ▶ Single phase 240V, 50Hz a.c.
- ▶ Suitable for 205 litre drums or smaller steel drums
- ▶ Supplied complete with 5m of galvanised steel wire braided cable

Order Heatex's latest catalogue online now

See our complete range and technical datasheets @ [www.exheat.com](http://www.exheat.com)

### HIJD Insulation Jackets



- ▶ Polyurethane nylon jacket
- ▶ Water resistant
- ▶ Flame resistant
- ▶ 25L, 50L, 105L, 200L sizes

### IBC Dual Circuit Jacket Heaters



- ▶ Polyurethane nylon jacket
- ▶ Dual 1kW heating circuits separately controlled
- ▶ Supplied complete with 5m cable
- ▶ 0 - 90°C capillary thermostat
- ▶ 240V standard with 110V option



## Electric Heating Elements



- ▶ Rod and finned rod type available in various diameters and materials supplied straight or formed to suit
- ▶ Removable ceramic core elements built to order on short delivery. Vertical mounting option
- ▶ Cartridge heaters available in various diameters and materials. Built in thermocouple option

See our complete range and technical datasheets @ [www.exheat.com](http://www.exheat.com)

Order Heatex's latest catalogue online now

## Trace Heating

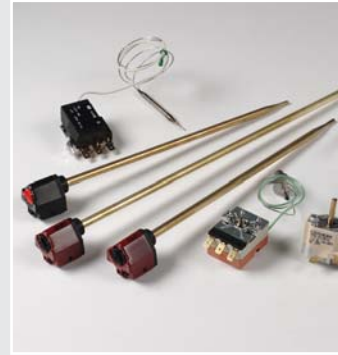


- ▶ Self-regulating heating tapes for use in non-hazardous, hazardous and corrosive environments
- ▶ Approved to CENELEC / IEC standards
- ▶ Can be cut to length no wastage
- ▶ Full range of controls and accessories
- ▶ Available for commercial or industrial applications

Subject to change without notice



## Thermostats



- ▶ Stem type auto reset
- ▶ Stem type manual reset
- ▶ Capillary type auto reset
- ▶ Capillary type manual reset
- ▶ Capillary type dual function
- ▶ Wide variety of temperature ranges available

See our complete range and technical datasheets @ [www.exheat.com](http://www.exheat.com)

Order Heatex's latest catalogue online now

## Flameproof Thermostats Models HFT & RFT



- ▶ ATEX certified  $\text{Ex}$  II 2 G/D EEx'd' IIC T3-T6
- ▶ Model HFT - wall mounted room thermostat
- ▶ Model RFT - immersion type process thermostat
- ▶ Various control and temperature options

Subject to change without notice



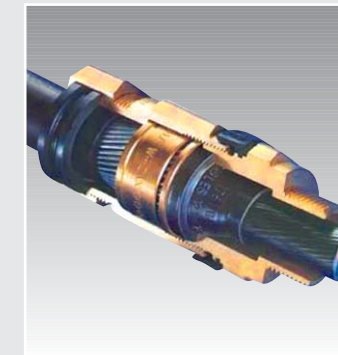
## Externally Adjustable Flameproof Thermostats



- ▶ ATEX certified  $\text{Ex}$  II 2 G/D EEx'd' IIC T6
- ▶ Built in externally adjustable thermostat
- ▶ Terminal box can be rotated to allow final cable entry position to be chosen
- ▶ Ambient or process sensing thermostat

Order Heatex's latest catalogue online now

## ATEX Cable Glands



- ▶ Indoor and outdoor use
- ▶ Flameproof EEx'd' and increased safety EEx'e'
- ▶ Suitable for use in Zone 1 and 2
- ▶ Supplied complete with shroud, locknut, washer and earth tag