

# INLIQUID™

Going... Going...  
Gone

Sam Koren  
Bhavisha Patel  
Gillian Pokalo  
Paul Rappoport  
Marta Sanchez  
Arlene Solomon

Contact:  
Rachel Zimmerman  
Rachel@inliquid.org  
215-235-3405



## Going ... Going ... Gone

Errands to run, work to do, games to play, we have to get there somehow.

These six artists have recorded their reflections of the journey through images of bicycles, trains, and cars real and imagined. Often they are moments in time: the bicycle locked to a signpost, the train stopped in motion through a photograph, cars for play and that have long since seen their last day. Sometimes these reflections are an assembled group of images that evokes the repetition of a daily commute, the mystery and labor involved in those endless freight trains, what it is that occupies all that space, and where is it going. Some images simply capture a special moment in history.

In a world that is constantly moving take a pause to see this art.



Detail of *Maura's Day at the Shore*, Arlene Solomon

Cover page: Detail of *Boat by the Water*, Gillian Pokalo

Contact:

Rachel Zimmerman

215-235-3405 · rachel@inliquid.

**INLIQUID**<sup>TM</sup>

**inliquid.org**

InLiquid is a 501(c)(3) nonprofit organization, and as such all gifts are tax-deductible

# Floor 2

# Going... Going... Gone



Gillian Pokalo  
*Commute*  
38" x 44" x 2"



Paul Rappoport  
*Jalopnik Buggy, rear*  
14" x 18" framed



Sam Koren  
*Tripping*  
20" x 30"



Arlene Soloman  
*The Big Bus*  
10.5" x 13.5"



Marta Sanchez  
*Luna de la Plata*  
11.5" x 14.5"



## Floor 2

## Going... Going... Gone



Gillian Pokalo  
*Commuter*  
Oil and screen print on canvas  
38" x 44" x 2"  
2006  
\$9,500

*Contact:*  
**Rachel Zimmerman**  
215-235-3405 · [rachel@inliquid.org](mailto:rachel@inliquid.org).

**INLIQUID**<sup>TM</sup>

[inliquid.org](http://inliquid.org)  
InLiquid is a 501(c)(3) nonprofit organization, and as such all gifts are tax-deductible

## Floor 2

## Going... Going... Gone



Arlene Soloman  
*The Big Bus*  
2016  
Mixed media photo collage  
10.5" x 13.5"  
\$400



Marta Sanchez  
*Luna de la Plata*  
2017  
serigraph, Coronado Studios  
11.5" x 14.5"  
\$600

Contact:  
**Rachel Zimmerman**  
215-235-3405 · rachel@inliquid.

**INLIQUID**<sup>TM</sup>

**inliquid.org**

InLiquid is a 501(c)(3) nonprofit organization, and as such all gifts are tax-deductible



## Floor 2

## Going... Going... Gone



Sam Koren  
*Tripping*  
2018  
Digital Photography  
20" x 30"  
\$675



Paul Rappoport  
*Jalopnik Buggy, rear*  
2017  
inkjet photographic print  
14" x 18" framed  
\$225

# Floor 3

# Going... Going... Gone



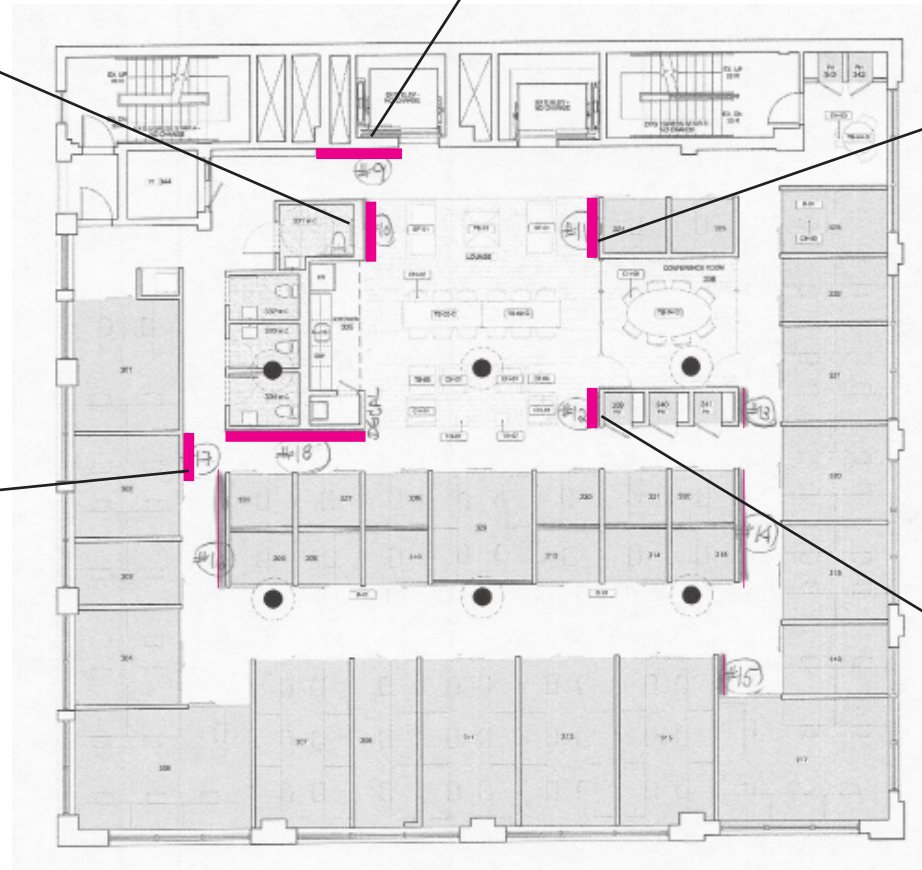
Gillian Pokalo  
*Bethlehem Steel Train*  
24" x 30"



Paul Rappaport  
*Coming?*  
13" x 17" framed



Sam Koren  
*As Life Passing By*  
20" x 30"



Marta Sanchez  
*Vertical Train Yard*  
72" x 36"



Gillian Pokalo  
*Station House*  
6" x 6" x 1"



# Floor 3

# Going... Going... Gone



Paul Rappaport  
*Coming?*  
2016  
inkjet photographic print  
13" x 17" framed  
\$225



Gillian Pokalo  
*Station House*  
2018  
Encaustic and Photo Screen print on panel  
6"x6"x1"  
\$200



Marta Sanchez  
*Vertical Train Yard*  
2005  
Oil and enamel on metal  
72" x 36"  
\$8,000

Contact:  
**Rachel Zimmerman**  
215-235-3405 · rachel@inliquid.

**INLIQUID**<sup>TM</sup>

**inliquid.org**

InLiquid is a 501(c)(3) nonprofit organization, and as such all gifts are tax-deductible



# Floor 3

# Going... Going... Gone



Gillian Pokalo

*Bethlehem Steel Train*

2018

Photo screen print and monoprint on paper, hand-colored, matted and framed.

24" x30"

\$750

Sam Koren

*As Life Passing By*

2018

Digital Photography

20x30x1

\$675

*Contact:*

**Rachel Zimmerman**

215-235-3405 · [rachel@inliquid.org](mailto:rachel@inliquid.org).

**INLIQUID**<sup>TM</sup>

InLiquid is a 501(c)(3) nonprofit organization, and as such all gifts are tax-deductible

**[inliquid.org](http://inliquid.org)**

# Floor 4

# Going... Going... Gone



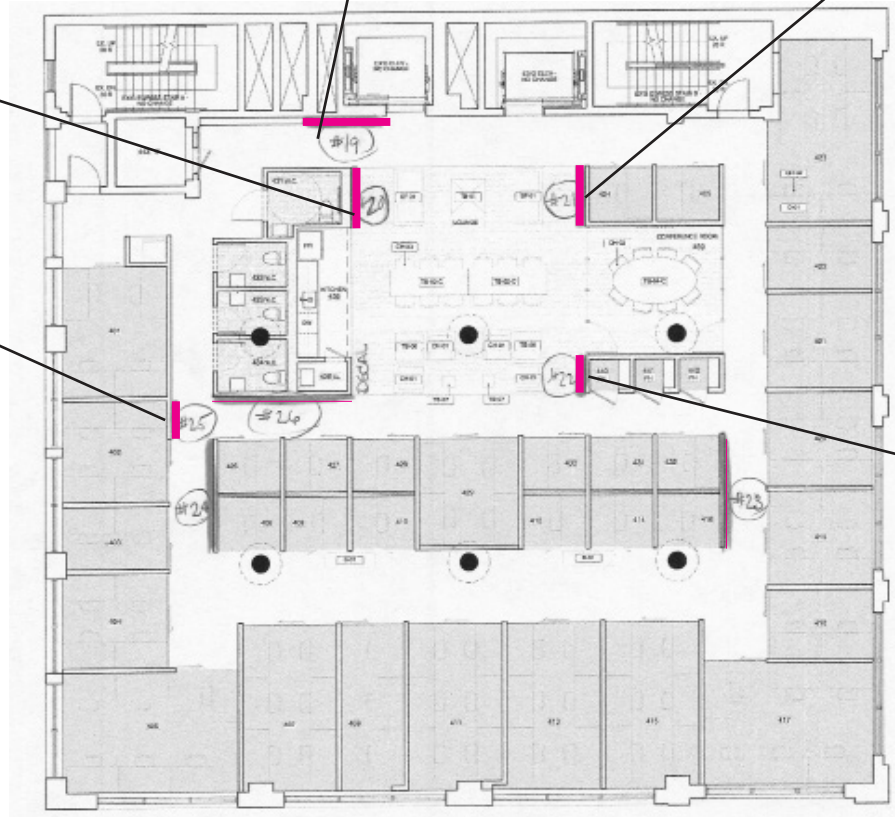
Gillian Pokalo  
*Boat by the Water*  
19" x 21"



Marta Sanchez  
*Spirit train/second and Indiana-1*  
8"x24" approx.



Bhavisha Patel  
*Amtrak Bridge II*  
14" x 18"



Bhavisha Patel  
*Bridge VII*  
20" x 24"

Arlene Solomon  
*Maura's Day at the Shore*  
7.5 x 9.5"

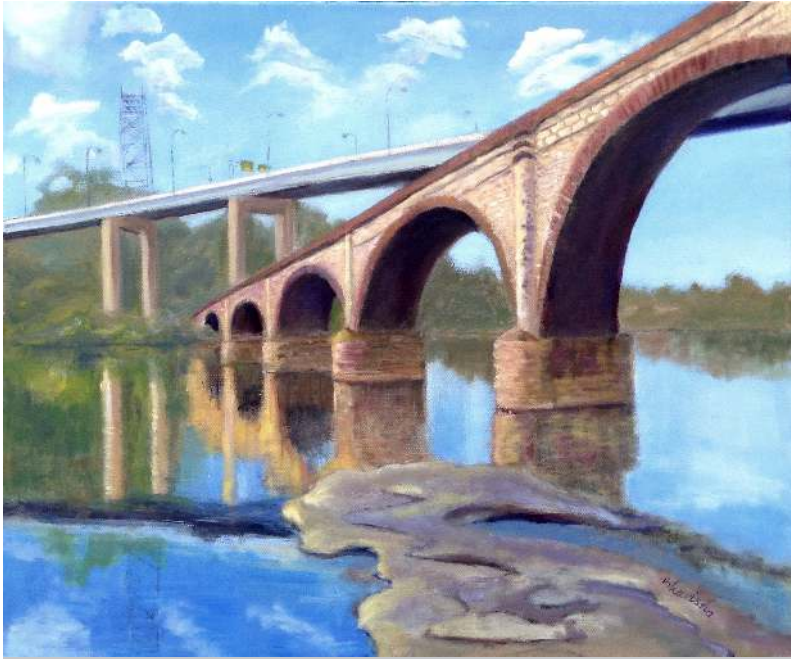


Arlene Solomon  
*Stopping for a Drink*  
10.5 x 13.5 x 1



## Floor 4

## Going... Going... Gone



Bhavisha Patel  
*Bridge VII*  
2017  
Oil on canvas  
20" x 24"  
\$1,200



Gillian Pokalo  
*Boat by the Water*  
2015  
Photo screen print and acrylic on paper, framed  
19" x 21"  
\$1,500

Contact:  
**Rachel Zimmerman**  
215-235-3405 · rachel@inliquid.

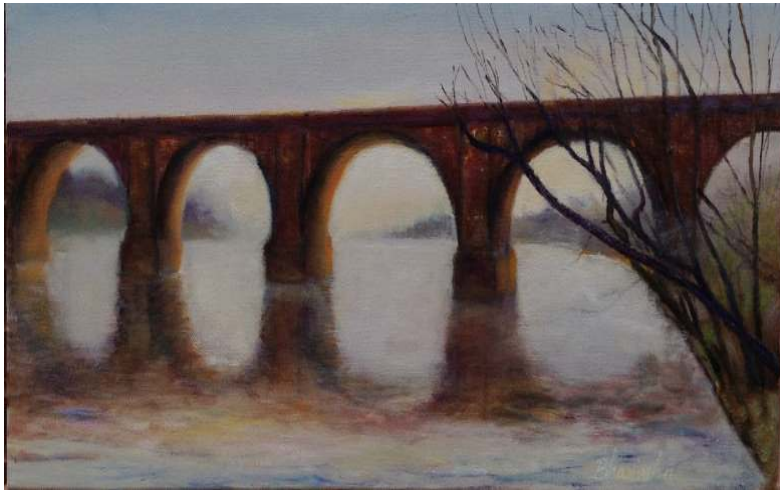
**INLIQUID**<sup>TM</sup>

InLiquid is a 501(c)(3) nonprofit organization, and as such all gifts are tax-deductible

**inliquid.org**

# Floor 4

# Going... Going... Gone



Bhavisha Patel  
*Amtrak Bridge II*  
2017  
oil on canvas  
14" x 18"  
\$500



Marta Sanchez  
*Spirit train/second and Indiana-1*  
2017  
acrylic on paper  
8"x24" approx.  
2,500

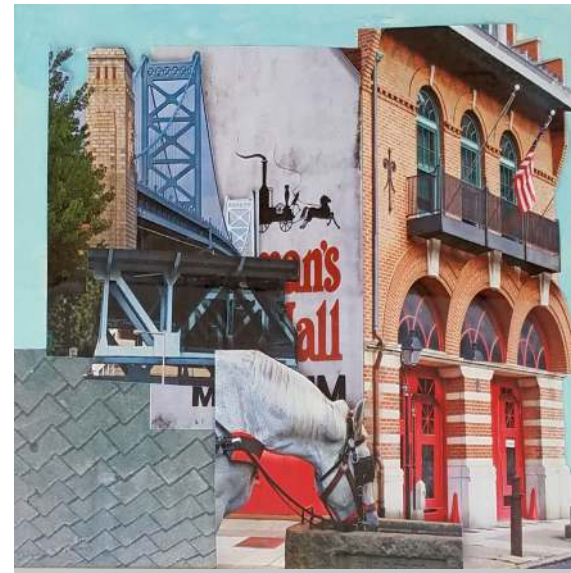


# Floor 4

# Going... Going... Gone



Arlene Solomon  
*Maura's Day at the Shore*  
2016  
Mixed media photo collage  
7.5 x 9.5"  
\$300



Arlene Solomon  
*Stopping for a Drink*  
2016  
Mixed media photo collage  
10.5 x 13.5 x 1  
\$400

# Floor 5

Going... Going... Gone



Paul Rapoport  
*Chili Con Bike*  
14" x 18" framed



Arlene Solomon  
*Saturday in Times Square*  
8 x 10 x 1



Gillian Pokalo  
*Under the Trestle Bridge*  
24" x 30" x 1.5



Bhavisha Patel  
*Rogues Gallery*  
14" x 11"



Bhavisha Patel  
*Bicycles in the Snow:  
Delancy Street*  
20" x 16"



Bhavisha Patel  
*I Fly, I Drive, I Bike, I Walk*  
9" x 13"



Bhavisha Patel  
*Bicycles In Snow,  
Walnut Street*  
20" x 16"



Bhavisha Patel  
*Bicycles in the Snow V*  
16" x 20"

Contact:  
**Rachel Zimmerman**  
215-235-3405 · rachel@inliquid.

**INLIQUID**<sup>TM</sup>

**inliquid.org**

InLiquid is a 501(c)(3) nonprofit organization, and as such all gifts are tax-deductible



# Floor 5

# Going... Going... Gone



Gillian Pokalo  
*Under the Trestle Bridge*  
2019  
Photo screen print and acrylic on paper  
24" x 30" x 1.5  
\$500



Arlene Solomon  
*Saturday in Times Square*  
2015  
mixed media photo collage  
8 x 10 x 1  
\$350.00

Contact:  
**Rachel Zimmerman**  
215-235-3405 · rachel@inliquid.

**INLIQUID**<sup>TM</sup>

**inliquid.org**

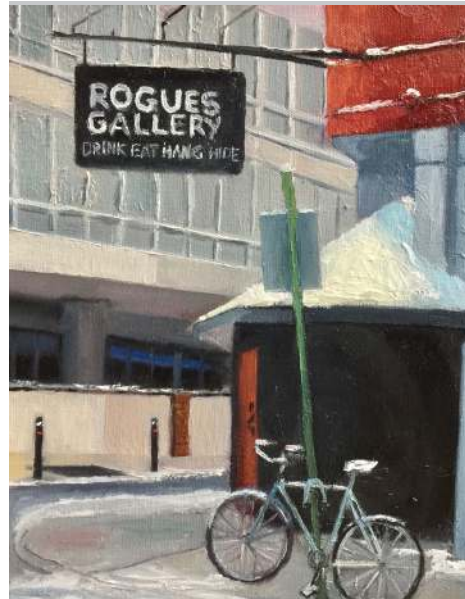
InLiquid is a 501(c)(3) nonprofit organization, and as such all gifts are tax-deductible

# Floor 5

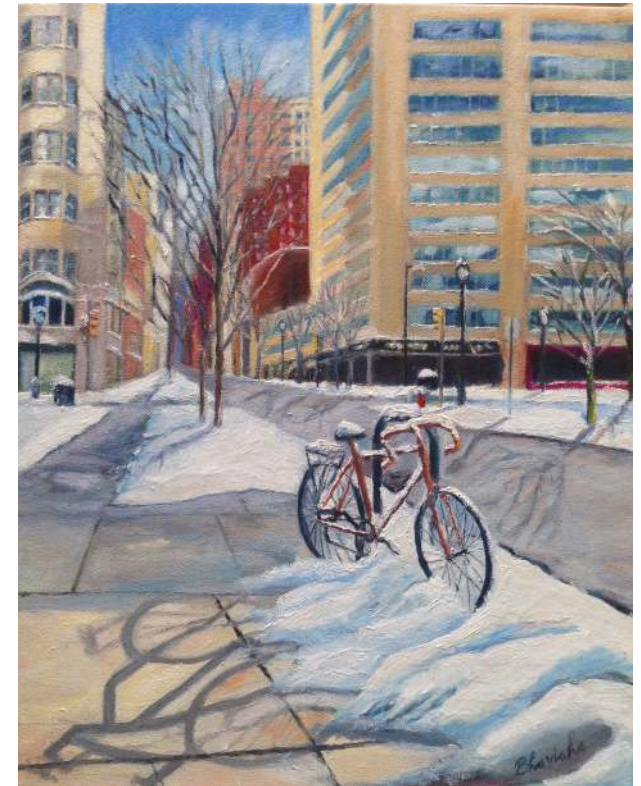
# Going... Going... Gone



Bhavisha Patel  
*Bicycles in the Snow: Delancy Street*  
2018  
oil on canvas  
20" x 16" x 1.5"  
\$1,000



Bhavisha Patel  
*Rogues Gallery*  
2019  
oil on canvas  
14" x 11" x 1.5"  
\$385



Bhavisha Patel  
*Bicycles In Snow, Walnut Street*  
2017  
oil on canvas  
20" x 16" x 1.5"  
\$800

Contact:  
**Rachel Zimmerman**  
215-235-3405 · rachel@inliquid.

**INLIQUID**<sup>TM</sup>

**inliquid.org**

InLiquid is a 501(c)(3) nonprofit organization, and as such all gifts are tax-deductible



# Floor 5

# Going... Going... Gone



Paul Rapoport  
*Chili Con Bike*  
2010  
Inkjet photographic print  
14" x 18" framed  
\$300



Bhavisha Patel  
*I Fly, I Drive, I Bike, I Walk*  
2019  
oil on canvas  
9" x 13" x 1"  
\$300



Bhavisha Patel  
*Bicycle in the Snow V*  
2017  
oil on canvas  
16" x 20"  
\$800

Contact:  
**Rachel Zimmerman**  
215-235-3405 · rachel@inliquid.

**INLIQUID**<sup>TM</sup>

**inliquid.org**

InLiquid is a 501(c)(3) nonprofit organization, and as such all gifts are tax-deductible