

# GOLD COUNTRY WOODCRAFTERS

Newsletter December, 2020

Vol 74

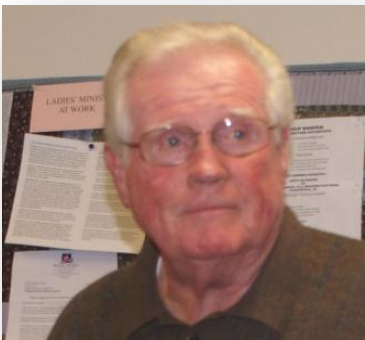
## GCW Purple Newsletter Brief:

For December we had record setting 19 members join the GCW Zoom meeting. Basil Borkert again managed the Show-N-Tell with 5 of the 19 participating in the Show-N-Tell. There were some great discussions on tools and projects prompted by the presenting members which brought the meeting to span 2 hours. For the November newsletter we have 6 members highlighted in the Show-N-Tell section. Again the “Members Corner” section on page 2 has messages from members.

## Zoom meetings:

The club is planning to hold Zoom (online) meetings until we are allowed to meet in-person. Unfortunately it may still be a few months before in-person meetings can be convened. Stay tuned for the Zoom meeting notice for January 12<sup>th</sup> 2021 and be sure to mark your calendar to join in at 7PM. Have pictures of your Show-N-Tell projects ready for these meetings. During the meetings you can bring up your project pictures and use the SHARE button on Zoom to show members your work. Homer Rail will continue to be hosting the meetings. All 2020 members and guests are welcome to join the Zoom (online) meetings for the foreseeable future. Details with the Zoom sign-on will be published the Thursday prior to each Zoom meeting. We have a number of our members now that have mastered the Zoom experience. If you haven't yet made the leap, give it a try. If you need one on one help, contact Homer, he's “the expert”. Homer Rail: [railart16@yahoo.com](mailto:railart16@yahoo.com)

## Presidents Message:



Dear fellow CGW members.

With the good news of Covid19 vaccinations beginning in December, GCW may be able to see some light at the end of the tunnel. Unfortunately, it still wouldn't be prudent to have a face to face meeting in January 2021. With the help of Gail Cone, we'll keep you posted and the executive board wishes you all a Merry Christmas (if that's possible) and certainly a happier New Year.

Blessings to all and stay safe.

*Warm Regards:*

*John Brideson*

GCW President

# GOLD COUNTRY WOODCRAFTERS

Newsletter December, 2020

Vol 74

## Standing message from the Editor:

We encourage our members to continue with their woodworking hobby. This is just one of the ways that can help us cope with the challenges being presented to us in this difficult time. The club is meeting through Zoom each month until in person is allowed and safe. Our members are encouraged to join the virtual meetings. With all the projects being created during this wild period we can look forward in anticipation of showing them “in person” at a future meeting. Our next, “in person” meeting will most certainly have to be a Show-N-Tell meeting to rival any.

## Notice:

**Membership Dues and Club Year:** Dues will not be due until we have our first in-person meeting. So for now, please **DO NOT** send in your annual Club dues. When in-person meetings are allowed dues will be prorated to align with the month that first in-person meeting occurs. Normally, established members are required to pay the full yearly dues regardless of when they pay their dues. That requirement will be reinstated the first calendar year the club is operational on January 1. The Executive Committee decided to set the club year to coincide with the calendar year. That is the club year, will now officially start on January 1 of each calendar year instead of September 1 of each year.

## Members Message Corner:

**Gail Cone:** If anyone would like to change their mug shot picture that is used for Show-N-Tells, etc please send me a new preferred one. Don't forget to smile...

**Gail and Karen Cone:**



Karen and I would like to wish all our GCW members and their families the most wonderful and joyous Christmas and New Year. We know the coming year is bound to be better than 2020 and look forward to when we can meet in person again (unmasked). We may never think of purple again in the same way.

With warm regards

*Karen and Gail.*

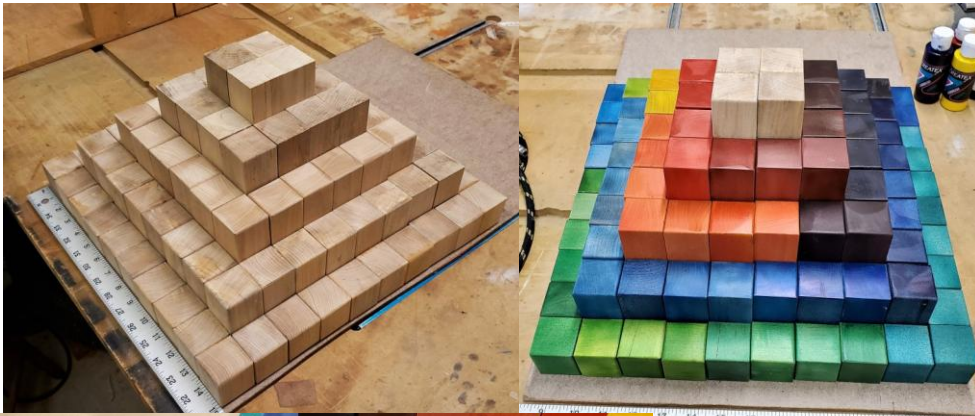
# GOLD COUNTRY WOODCRAFTERS

Newsletter December, 2020

Vol 74

## V-Show-N-Tell (6 Members):

### *Homer Rail*



I have been making this set of wooden blocks for my granddaughter in Colorado for a while now. They are all uniformly cut and sanded to a precise size measured with digital calipers then sprayed with a water based acrylic paint using a Binks airbrush. The four tallest blocks have been sprayed with clear. A base was created to hold the set. They are now on their way to Colorado. I just checked the price on

the commercially available set and it has a price tag of \$330.00! The blocks are a learning/teaching tool used in math and engineering for children.

*Homer*



### *Basil Borkert*



This picture shows a dish display rack I created for my wife. It is made from Red Oak, stained with Minwax and finished with semi-gloss poly and waxed.

*Basil*

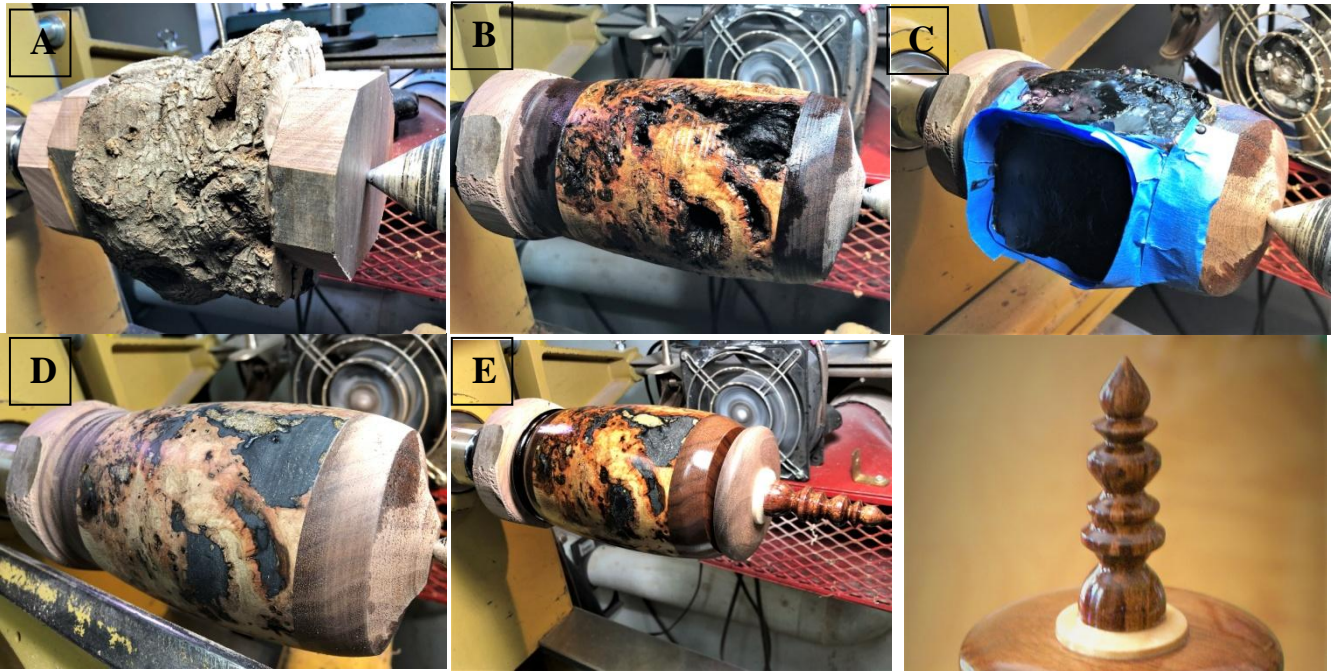


# GOLD COUNTRY WOODCRAFTERS

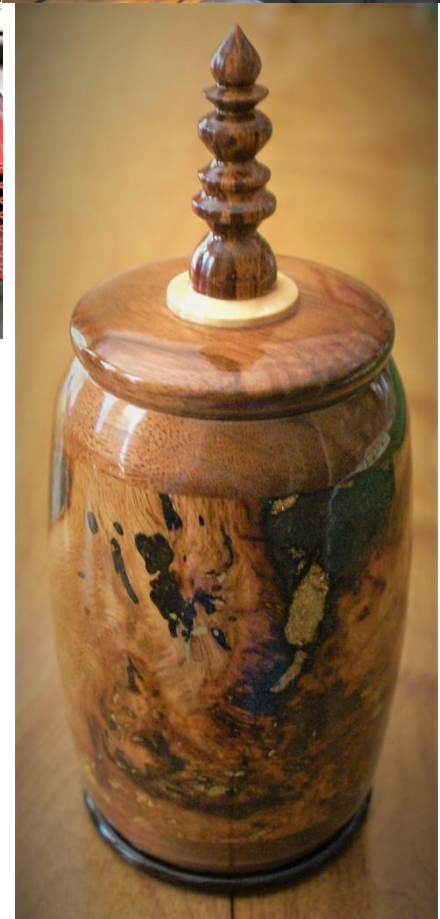
Newsletter December, 2020

Vol 74

## Gail Cone



I love to take, what some people would call, firewood and try to create some wood art. Well this is my latest. It started out as a section of Oak limb that had been infested with mistletoe. If you look closely (Picture A) you can see some of what is left of the mistletoe stocks. Worms and rot take over as the limb dies and ages to add to the character piece. With this much damage the project requires the addition of a bottom and top block to help hold it together, in this case Walnut. After picking out all the loose stuff I stabilized the piece using CA (lots of it, picture B). At this point I start filling in the voids where some of the voids go well into the center. The large voids I stuff some TP and saturate with CA to close off possible filling leaks. I then add wood dust (then CA) to deep sections to set their depth to no more than 1/8" or so. For the filling I use resin for the large voids (picture C) and for the smaller areas I use epoxy or thick CA. Artists black acrylic is added to the fillers for color. Brass key filings are added for the gold accent. For really small surface voids I use powdered brass set with CA. After turning off the fillers (picture D) and refining the surface there are many spots that have to be cleaned up or filled (fair amount of time spent here). For the finish I used CA requiring several coats that are sanded and buffed out. This is a time consuming finish to apply and all does not always go well but the results are well worth it. The bottom ring is Walnut colored using Trans-tint dye (will use acrylic next time as the CA reacts with Trans-Tint). The Top is Walnut, Maple, Purple Heart sap-wood (finial).  
Take care and stay safe.



Gail

# GOLD COUNTRY WOODCRAFTERS

Newsletter December, 2020

Vol 74

*Dale Gamble*



We picked up the project designs via the Internet. Most of the cars are made from scrap Oak with one being made from Cherry. Each has a half inch veneer ply sandwiched to kind of show a racing stripe. The wood for the elephants is Poplar. Many thanks to my wife for her help with the elephant ears. Both projects were finished with butcher block conditioner. We'll be dropping off the toys at the CHP with acknowledgment for Gold Country Woodcrafters.



*Dale*

*Ron Sexton*



Here is my latest project. This is a small turned Ring Bowl. The woods used are Patagonia Cypress, Walnut and Sugar Maple. It measures approx. 4"W X 3" H. The knob is solid brass, lathe turned, that I bought from Anglo American Brass when I was in business. It is the last one I had in stock. I will probably give it to my Grand Daughter.



*Ron*

# GOLD COUNTRY WOODCRAFTERS

Newsletter December, 2020

Vol 74

*Bill Meronek*



Shelves



Reed Holder



Doors



Attached are pictures of 3 projects I presented at last Tuesday's Zoom meeting. A: The first a set of Bathroom Sink Shelves. They are made using White Oak. Joinery incorporates dado cuts using a router.

The finish is 2 coats of tung oil, 2 coats wipe on poly. I used 4/4 stock planed down to 1/2". B: The second is a Weaving Reed Holder made using maple. For assembly I used dowels as well as screws. I routed edges and inset the bottom piece. Again I used 4/4 stock planed down to 1/2". For the finish I used 2 coats tung oil finish and 2 coats of wipe on poly. C: The third is a set of Bathroom Cabinet Doors & Drawer fronts made using paint-grade Poplar 4/4 stock planed down to 1/2". I added 1/4" trim around edges and drilled holes on back side to accommodate Blum hinges.



*Bill*

# GOLD COUNTRY WOODCRAFTERS

Newsletter December, 2020

Vol 74

**Businesses that support GCW:** Be sure to stop by Woodcraft Supply Sacramento, Pro Builder Placerville, The Paint Spot\*, or the Rockler Woodworking\* store in Rocklin. Please let them know how much Gold Country Woodcrafters appreciates their support. \* ***Businesses offering GCW member discounts.***

**Membership Dues: (No dues required until further notice)**

**Notice to members:** If your contact information has changed since joining please let the club know. Just send any changes you may have to the email address used to send out the newsletter. Your cooperation is much appreciated.

**Gold Country Woodcrafters Meeting Place:** (When we can) GCW meetings are held the second Tuesday of each month unless otherwise notified and are at the Park Community Church meeting hall, 3901 Wild Chaparral Dr. Shingle Springs, Ca. exit 37 off highway 50. A map is provided on the home page of the GCW website.

**Saw and Planer blade sharpening:**

For members that need some blades sharpened GCW member Ken Welsh can handle the job. Just give him a call.

## WELSH'S SAW WORKS

Formerly Rocklin Saw Works

**Ken Welsh**

Owner

3021 Crystal View Drive  
El Dorado Hills, CA 95762  
(Off Bass Lake Road)

**Phone: (530) 677-4938**

**Cell: (916) 275-3388**

Regards and happy woodcrafting.

Gail Cone

GCW Newsletter editor



I would like to acknowledge my Wife, Karen, for taking the time and effort to proof read the newsletter each and every month. Believe me it makes a real difference making me look good.

**GCW Web site: [goldcountrywoodcrafters.com](http://goldcountrywoodcrafters.com)**

If you have any comments or suggestions please send them to me via an email. If you wish to unsubscribe so you no-longer receive GCW newsletters just send me a reply with the word "unsubscribe" in the subject.