

MSA KART RACE YEARBOOK – 2006

APPENDIX 1 – MSA Homologated Chassis

Formula Cadet

Note that 1991 homologated chassis are no longer eligible for use in Formula Cadet.

1994 Homologation

Wright	Mini	50-94
Patron	Knight	51-94
KartPro	Stratos KPS 94	52-94
Kartell	Spirit	53-94
Swift	S94	54-94
Red Dragon	Dragon Cadet	55-94
Deavinsons	Sprint Cadet	56-94
Zip Kart	Zip Cadet	57-94
Top Kart	Mini Top	58-94
Comer	Mini	59-94
Dartford	Solo Cadet 2	60-94
Allkart	Komet	61-94
Cancelled		62-94
Tony Kart		63-94
Fullerton	Mini	64-94
PCR Mini		65-94
Alpha	Mini (Tecno from 1.1.98)	66-94
DAP/Tabor	Rookie 03	67-94
ARC	C2	68-94
Gillard	Cadet	69-94

1998 Homologation

Biz Karts	JK3 RC	01-98
Deavinsons	Cadet/98	02-98
Tal-Ko	Renegade	03-98
CRG (Tal-Ko)	Cadet	04-98
McMahon	Tiger Shark	05-98
John Mills (Delta)	Mari Minikart	06-98
O'Neill (Tony Kart)	Minikart	07-98
Dartford	Cadet	08-98
Simon Wright	07 Garda	09-98
Gillard	Cadet 105	10-98
Anderson-CSK	Fontana	11-98
Comer)		
Fullerton	Club 2000	12-98
ARC	ARC Cadet	13-98
Tabor (DAP)	Lance	14-98
Zip Kart	CD06	15-98
Rocket	(Tecno) Jensen Mini	16-98
Chevron	B75 Kadet	17-98
Andy Cox	(Birel) L3	18-98
Berkeley	(Gold) Cadet	19-98
MBA	(Zip Kart) Mini	20-98

2001 Homologation

Anderson	Magic	CHC-01-01
ARC	Sprinter	CHC-02-01
Drew Price	AX6 Arrow	CC-03-01

BRM	CSA/6/01	CC-04-01
Biz	JK3HC	HC-05-01
Bowman		HC-06-01
Dartford	Solo Sonic	CHC-07-01
Deavinsons		CHC-0801
ELK	Cadet	CHC-09-01
Fox	Mini	CC-10-01
Kamikazi	Cadetti	CC-11-01
Swiss Hutless	Cool	CC-12-01
Kartell	Spirit	HC-13-01
Rakama	Mike	CC-14-01
Biesse	Mini	CC-15-01
M.B.A	Mini-Comer	CC-16-01
LRG Karts	Cadet	CHC-17-01
Mari	Minikart	CC-18-01
Top Kart	Mini 2000	CC-19-01
Tony Kart	Rocky (Trulli)	CHC-20-01
Parolin UK	Revo	CHC-21-01
Patron Racing	Knight	CHC-22-01
Project One		HC-23-01
Shark	Tiger Shark M	CC-24-01
Piranha	Cadet	CHC-25-01
Swiss Hutless	UK Mini Cadet	CC-26-01
Simon Wright	Braga	CHC-27-01
Zip Kart	Puma	CC-28-01

2004 Homologation

Arrow	AX8 MIDGET	01/C/04
Tony Kart S.r.l	ROCKY EXP	02/C/04
ZIP Kart	ZIP BLADE	03/C/04
Tal-ko	MONZA	04/C/04
Mac Minarelli	STORM	05/C/04
LRG	LRG CADET	06/C/04
Haase S.r.l	BOMBER/SKIPPER	07/C/04
DK	STNGER	08/C/04
Shark	TIGER SHARK MK3	09/C/04
Wright	GARDA 04	10/C/04
Project One	HONDA CADET	11/C/04
Racing		
Mari	MK11	12/C/04
Ital Course SRL	IT 15	13/C/04
Swiss Hutless	MINI CADET	14/C/04
MS Kart	MS KADET UK	15/C/04
PCR	MINIK4	16/C/04
Maranello	RS-3	17/C/04
Biz	JK3	18/C/04

CADET BRAKE
 BIREL SPA B - 1 H6/P22 - DL 18-98
 * CC= Comer Cadet, HC= Honda Cadet,
 CHC= Comer or Honda Cadet

Formula TKM

Note that the 90/91 listed chassis are no longer eligible for use in Formula TKM.

MSA KART RACE YEARBOOK – 2006

1994 Homologation

Tal-Ko	KM-S-Stealth	TKM-10-94	Zip	CD16	03398
Tal-Ko	TKM-L-Stealth	TKM-11-94	Deavinsons	Sprint TKM100/104	03498
Deavinsons	Sprint 100	TKM-12-94	Deavinsons	Sprint TKM100/101	03598
Swift	F TKM	TKM-13-94	Kartpro	Stratos Formula TKM	03698
Spirit	Spirit SDB	TKM-14-94	Dartford	Solo Revenge	03798
Spirit	Spirit SP	TKM-15-94	Dartford	Solo Taurus	03898
KartPro	F TKM	TKM-16-94	McMahon	Shark	03998
Zip	CD15	TKM-17-94	Anderson	Fontana	04098
Zip	CD10	TKM-18-94	Fullerton	Tiger	04198
ARC	Senior TKM	TKM-19-94	Fullerton	Lion	04298
ARC	Junior TKM	TKM-20-94	Lovato	Smart Kart	04398
Vixen	VB1 Senior	TKM-21-94	ARC	K2000 E	04498
Vixen	VB2 Junior	TKM-22-94	ARC	K2000 C	04598
SWRD	O2/P2	TKM-23-94	Vixen	VB4	04698
SWRD	O2	TKM-24-94	Bowman	Flight	04798
Kestrel	K4	TKM-25-94	Bowman	Arrow	04898
Paul Carr	Venom A	TKM-26-94	Gillard	TKM 205	04998
Paul Carr	Venom P	TKM-27-94	Gillard	TKM 206	05098
Anderson	100TKM	TKM-28-94	Paul Carr	Venom A (re-hom)	05198
Tabor	Sabre	TKM-29-94	Paul Carr	Venom Ultima	05298
Patron	Knight L	TKM-30-94	Kartell	SDB Meteor	05398
Patron	Knight S	TKM-31-94	Kartell	SDB Evolution	05498
Kartsport	Boxer K1	TKM-32-94	Wimbleton	Daytona	05598
Kartsport	Boxer K3	TKM-33-94	Slipstream	Pukka	05698
Berkeley	Rapide	TKM-34-94	O'Neill	Verde 28	05798
Project 1	Project 1	TKM-35-94	O'Neill	Verde 30	05898
Red Dragon	94	TKM-36-94			
Dartford	Solo 2/94	TKM-37-94			
Dartford	Solo 1/94	TKM-38-94			
Gillard	TKM 203	TKM-39-94			
Gillard	TKM 204	TKM-40-94			

All Turbo karts have been excluded from the homologation list and may not be raced in Formula TKM.

None of the above karts may be sold as new

The RP Motorsport TKM DP94 kart has been excluded from the homologation list and may not be raced in Formula TKM.

1998 Homologation

Please note that from 1.1.98 manufacturers are not permitted to sell new karts which do not bear the appropriate 1998 chassis markings.

Tal-Ko	Raider	02098
Tal-Ko	Stealth Evolution	02198
Patron	Knight TK	02298
Kartsport	Boxer K5	02398
BIZ	TKM J	02498
BIZ	TKM S	02598
Project One	Evo	02698
Kestrel	K4 (re-homologated)	02798
Kestrel	K6	02898
Wright	06 Suzuka	02998
Wright	07 Garda	03098
Rocket	RMS Rocket	03198
Zip	CD11	03298

2001 Homologation

Tal-Ko	TKM Raider R1	00101
Tal-Ko	TKM Raider R3	00201
Biz Karts	Biz TKM	00301
Project One	Project One EVO 2	00401
LRG Karts	8LRG TKM	00501
LRG Karts	2LRG TKM	00601
Dartford	Solo Tornado	00701
Dartford	Solo Revenge/2	00801
JKH	Dynamite	00901
Shark	M2	01001
Shark	M1	01101
Shrewley	Jade	01201
Zip Kart	Cougar	01301
Deavinsons	TO1	01401
Simon Wright	Braga	01501
Simon Wright	Suzuka/2	01601
Kestrel	K7 Stinger	01701
Anderson	Magic	01801
John Mills	JM Kart	01901
Modus	Vixen VB5	02001

MSA KART RACE YEARBOOK – 2006

ARC	KZero 04-T	02101	SWRD	Braga 04	00404
ARC	KZero 04	02201	Modus M/S	Vixen VB6	00504
Paul Carr	Venom Attack	02401	RM Wilson	TEC-MEC Banshee	00604
Kartell	Spirit Excell 1	02501	RM Wilson	TEC-MEC Voodoo	00704
Kartell	Spirit Excell 2	02601	Patron	Knight	00804
Gillard	208	02701	Jade	Elite 2	00904
Gillard	209	02801	Jade	Elite 1	01004
TRT	RT9 Mullet	02901	Project 1	Project 1 Eclate	01104
Longfield	RMS Rocket	03001	Dartford	Nimrod	01204
			JKH	Dynamite V3	01304
			JKH	Dynamite V4	01404
			Gillard	209 EVO	01504
			Gillard	208 EVO	01604
			P Carr	Venom Sidewinder	01704
			P Carr	Venom Shadow	01804
From Jan 1, 2004 none of the above karts may be sold as new.					
<u>2004 Homologation</u>					
Tal-Ko	TKM Storm	00104			
Tal-Ko	TKM Blade	00204	Re-Homologation		
ARC	Elite	00304	ARC	K ZERO 4-T	02101

MSA KART RACE YEARBOOK – 2006

APPENDIX 2 – Eligible Engines

Formula ICA – Liquid Cooled Variants registered with the MSA

REG NO.	MANUFACTURER	MODEL
Lc/ica/15/00	Haase	Titan wI2
Lc/ica/17/00	Vortex	VL/cw
Lc/ica/18/00	Metalscale	Fox mc10I l/c
Lc/ica/21/00	lame	Mag 95
Lc/ica/23/00	lame	Parilla Reedjet
Lc/ica/24/00	Vortex	V195/w
Lc/ica/28/01	lame	100 Reedjet lc

Formula 100 National 98

Arisco Terminator V-95.
 Atomikart AKV95.
 CMP GP-25.
 CRG S20-T1.
 Dino M1.
 Fox MC 20V.
 Hetschel KZH-1-D95.
 Italsistem Saetta SV11, MV 21.
 JAKO 1VA.
 Parilla TT37.
 PCR TSV95 Rotary V.
 Refo F3.
 Rotax R100DS-D-R.
 Sirio TT53.
 Titan RV 1.
 Vortex VR95, VR95-B.

Formula 100 National 95

Atomikart AKV92.
 Comer MIK 350V.
 DAP T79, T71.
 Fox 96V.
 Hetschel KZH100D.
 IDK Twin Spark V.
 Ital MV 1.
 Kilt KV103/FA/FK.
 OS ITL100.
 Parilla TT36.
 PCR TSV100.
 Rotax R100DSC, DS-C3.
 Solo TT46.
 Solo TT42 with the new head.
 TKM KA100, KA 100B with new head.

Formula 100 National 92

Arrow KE3TT KE4 3P.
 Atomikart AKV 90.
 DAP T91, T92, T70TT, T76, T95.
 Dino 100R, 100 3K, 100T, 50TT.
 EME BPS 50, BPL 48.

Komet K78, K55TT.
 MacMinarelli 100V.
 Parilla TT22, TT23, TT27, TT31.
 PCR TS50/3 TS50 3 Nordica TS54/3.
 RKO IT/3/TT/C.
 Rotax R100DS.
 Sirio ST50.
 Solo TT42 with the old head only.
 TKM F99 3P, F99TT, L90TT, S89 3P, S89TT,
 RL66TT, RS98TT, RL80TT, KA100B (old head).
 Yamaha KT100AX.
 Zip 48.

Plus following liquid cooled variants for Formula A and 100 National:

REG NO.	MANUFACTURER	MODEL
100lc/1/98	Dino	M1
100lc/2/98	Hetschel GmbH	KZH-100d lc
100lc/3/98	Kilt	KV103 lc
100lc/4/98	Bombardier Rotax	100 Kart ds/lc
100lc/5/98	CRG. srl	S20 ti lc
100lc/6/98	Ital Sistem	MV1 lc
100lc/7/98	Saetta	SV11lc
100lc/8/98	Ital Sistem	MV21 lc
100lc/9/98	Dap	T86 lc
100lc/10/98	Parilla	TT37el
100lc/11/98	Vortex	VR95w
100lc/12/98	Titan	WR1
100lc/13/99	Atomikart	Akv95 lc Atomic
100lc/14/99	Metalscale	Fox mc20v lc
Lc/fa/16/00	Vortex	VR/cw
Lc/fa/19/00	Metalscale	Fox mc20v l/c
Lc/fa/20/00	MRC/PCR Atk	Atk rsv98lc
Lc/fa/22/00	lame	Parilla TT38
Lc/fa/25/01	Comer	351 v & vti lc
Lc/fa/26/01	lame	TT38 super lc
Lc/fa/27/01	lame	TT39 maxi lc
Lc/fa/29/01	Ital Sistem	Saetta sv21lc
Lc/fa/30/01	Rotax	R-100 DS-F-R/LC

MSA registered engines for Formula ICC/125 Open (as appropriate to class regulations)

Bombardier Rotax R124 A/C.
 Gilera R1S, 125KS.
 Honda CR125 pre-31.12.94, including parts shown on Honda lists pre-31.12.94. (Onus on competitor to prove eligibility)
 Minarelli K125 LA, K125 LW.
 Moto TM K7, KL98.
 Pavesi Lam93, Lam95.
 SGM F198.

MSA KART RACE YEARBOOK – 2006

Plus the following 2001 registrations

REG No.	MANUFACTURER	MODEL
125-0101	CRS srl	S88
125-0201	CRS srl	MF1 125cc
125-0301	TM Racing Italy	K9
125-0401	Pavesi	Lam 98
125-0501	Pavesi	L 2001
125-0601	Motori MC Kart srl	MC Bat-1
125-0701	Motori MC Kart srl	Bat-3
125-0901	Vortex	VL 125
125-1001	TM Racing Italy	K9 (Modus)

Formula 250 National

Bombardier Rotax 257 (when modified to 5 speed form)

Cagiva WMX 250/88 Cross.

Honda CR250.

Kawasaki KX250.

KTM 544/545/546.

Moto TM Cross 250.

Suzuki RM250 Z to V (1982 - 1997 inclusive).

Yamaha YZ250.

APPENDIX 3 – Silencing

1.6 Intake Silencers

1.1 In 100cc classes other than Senior and Junior Formula TKM only CIK-FIA homologated boxes are permitted for ABkC championship events. British made boxes conforming to the CIK specification may be used in club meetings by all classes other than the Formula TKM classes. CIK noise boxes conform to the following nominal specification:-

- a) The intake silencer must make a petrol tight fit with the carburettor interface.
- b) The minimum volume of the silencer must be 1000cc.
- c) The material must be non splinterable plastic.
- d) Have a maximum of two openings for the air intake.
- e) The air intakes must be unmodified and be a maximum of 23mm diameter for 100cc and Junior Gearbox karts and maximum of 30mm diameter for all other gearbox karts.

1.2 A CIK homologated box must not be modified with the exception of drilling holes in the mounting flange and drilling a maximum of two holes in the box wall, for the sole purpose of mounting on gearbox karts. The carburettor adapter is free providing a petrol tight joint is made between the box and the carburettor.

All gearbox karts must have a CIK intake box correctly fitted, or one that is approved by the ABkC for that class.

1.3 In order to obtain ABkC approval 10 boxes must be presented for inspection. The boxes must be professionally produced devices complete with production diagrams. During a noise test, which is made on an overhead microphone, static and on both sides of the kart, the box must give at least equal noise attenuation to a CIK intake box fitted to the same engine. The lap times with the box on test must be comparable with lap times using a CIK box. A sample of the box will be retained by ABkC as a reference.

An ABkC approved box must be permanently marked with its ABkC approval code in order to be deemed legal for use.

1.4 The following intake boxes have been approved by the ABkC for use on all gearbox karts with the exception of the Europa, Junior Gearbox, ICC (UK) and Super ICC classes:-
Single Cylinder FIS/2RV Motivation Design and Development Filtered Induction Silencer System Assembly, side fitting for rotary valve gearbox class engines, fitted with Pipercross foam filter element. Approval expires 31/12/2007.

Twin Cylinder FIS/2T Motivation Design and Development Filtered Induction Silencer System Assembly, side fitting for rotary valve twin cylinder gearbox class engines, fitted with Pipercross foam filter elements. Approval expires 31/12/2007.

Single Cylinder FIS/2PR Motivation Design and Development Filtered Induction Silencer System Assembly, for reed valve or piston port induction single cylinder gearbox engines, fitted with Pipercross foam filter element. Approval expires 31/12/2007. It must be fitted with the intake trumpets facing towards the ground. Not applicable to 250E.

Note that the intake box designated GB1/94 is no longer approved.

1.5 Formula 210. All air entering the carburettor must flow through either a K & N cylindrical filter, Part No. RU 0840, or a K & N conical filter, Part No. RU 9220. These intake filters must only be used with an exhaust muffler conforming to 20.8.5.2. An air box conforming to the CIK specification or an air box approved by the ABkC may also be used.

MSA KART RACE YEARBOOK – 2006

2.0 Exhaust Silencers

2.1 Unless specifically authorised exhaust lengths may not be varied whilst the kart is in motion. Any such system must be failsafe in operation, not present a hazard and incorporate a measurable reduction in sound level. It should be noted that authorisation will only be given for applications for Formula 100 National as the majority of classes do not allow such systems.

2.2 The following regulations 2.3 and 2.4 are mandatory for all gearbox classes except Europa 125. The following regulation 2.5 is mandatory for all gearbox classes except 125 Europa and 210 National.

2.3 Karts shall be provided with an exhaust silencer lying approximately parallel to the rear axle of the kart, and fed by a gas-tight tubed link pipe of a minimum 300mm length from the exit of the expansion chamber to the entrance of the silencer/muffler. In Formula 250E at least one silencer must lie approximately parallel to the axle.

2.4 The link pipe must have a bend of approximately 180 degrees for engines exhaust ported to the rear. For engines exhaust ported to the front, the bend must be between approximately 45 degrees and approximately 180 degrees. Formula 250E is exempt from these bend angle requirements.

2.5 The muffler must have an external diameter of a minimum of 100mm and a minimum canister length of 380mm. The canister must be used with muffling material and/or baffling plates to be an efficient silencer. The exhaust exit diameter of the canister must be no greater than 38mm.

2.6 Formula 250E: Mufflers as above, two to be fitted.

2.7 Formula 210. All gasses leaving the engine must pass through a muffler with minimum active length 47.5cm, minimum outside diameter 10cm, with an inner tube of maximum bore 4.0cm which must have perforations over the majority of its complete length. The muffler must be connected to the exhaust tailpipe by a nominal 180 degree bend or flexible pipe.

3.0 General

3.1 The black flag will be shown during a race to signify that a kart is exceeding the sound level limit for the class or circuit. Drivers must return to the pits and report to the Clerk of the Course. If the silencing system is broken during a race the driver must stop in a safe place as soon as is practical and not attempt to continue or return to the pits.

3.2 Attention must be given to silencing systems maintenance. With the published reductions to permitted levels it is important that flex connections and joints are checked regularly and made good. Exhaust silencers which are capable of being repacked, such as Rotax 125 Max, can suffer from declining performance and it is essential that repacking is carried out in accordance with manufacturers instructions.

MSA KART RACE YEARBOOK – 2006

APPENDIX 4 – ABkC Additional Regulations to the MSA Kart Race Handbook – 2006

A. General

The Association of British Kart Clubs (ABkC) was formed in 1990 to act as an interface between kart clubs and the sports governing body, the MSA, with whom there is a high degree of discussion and co-operation. The clubs are represented by a Steering Group which is elected each year during the ABkC AGM which is held in the Autumn.

The regulations contained in the 2006 Kart Race Yearbook and referred to as ABkC affiliations and/or ABkC rules represent the class structure being used by the Association in its direct drive and gearbox national championships. **All clubs affiliated to ABkC have agreed to use these regulations for their race meetings. Without this co-operation it would be impossible for drivers to move from club to club during the racing season and find the same race classes.**

This document should be used as an addition to the Club's Supplementary Regulations and used as the reference point for the classes.

All ABkC clubs must run their meetings according to the regulations set down by the MSA. The officials and all safety regulations must conform to the current MSA Yearbook, the ABkC specific regulations are only the class regulations. The ABkC reserves the right to conform to changes in CIK regulations that occur after the publication of the 2006 Kart Race Yearbook.

Information printed in italics relates to regulations that will come into force in the future should the member Clubs agree.

Regulations which contain numerals in brackets e.g. (N.14.8.1) are references taken from the MSA Motor Sports Yearbook.

Changes are shaded.

Definitions

The ABkC Kart Racing Regulations, were until 1997 published separately and were known as the "Green Book". These regulations are now incorporated into the 2006 MSA Kart Race Handbook, known as the "Gold Book", published by the MSA on behalf of them and all the Kart Associations. The MSA British Motor Sports Yearbook, is hereafter called the "Blue Book". The CIK Yearbook of Karting Sport, is hereafter called the "Yellow Book".

ABkC National Championships will be organised by the Super One, Super Two and Super Four or other series as may be decided by the Steering Group for those existing popular classes and selected CIK classes as indicated under the Class Regulations. ABkC single event National Championships may be organised for these and for the other less popular existing classes and any newer classes as they become established.

Only members of ABkC Clubs can enter the ABkC championships or qualifiers, these are:

S1 Series

Formula Intercontinental A

Formula 100 National

Formula TKM Extreme

Formula Rotax 125 Max

Formula Rotax 125 Max/177 (if run)

Formula Junior TKM

Formula Junior TKM Intermediate

Formula Junior Rotax UK (aka Formula Junior Max)

Formula MiniMax (aka Formula Junior Rotax UK Restricted)

Formula Cadet (Comer and/or Honda and/or WTP)

MSA KART RACE YEARBOOK – 2006

Super 2 Series – Honda Cadet, Junior and Senior; World Formula

Super 4 Series – All gearbox classes – 2006 allocation

Super ICC – BRDC Stars of Tomorrow

Junior Gearbox – BRDC Stars of Tomorrow

ICC UK – NKF

250 National - NKF

ABkC Open '0' Plate Championships

ABkC Internations Challenge (with exception of entries from Eire team)

Senior officers of the Association:

Chairman Russell Anderson

☎ 01977 689990 email: chairman@abkc.org.uk

Secretary Graham Smith, "Stoneycroft", Godsons Lane, Napton, Southam CV47 8LX.

☎ & Fax: 01926 812177. email: info@abkc.org.uk

Treasurer Ian Rennison, c/o Clay Pigeon Raceway,

The ABkC website can be found at <http://www.abkc.org.uk>

Member Clubs (as at 01.10.05) are:

Bayford Meadow KC • Beccles & District KC • BRDC Stars of Tomorrow • Buckmore Park KC • Camberley KC • Chasewater KC • Clay Pigeon KC • Cumbria KC • Dunkswell KC • East of Scotland KC • Forest Edge KC • Guernsey Kart & Motor Club • Grampian KC • Hoddesdon KC • Hunts KC • Isle of Man • Kent Kart Racing Club • Lincolnshire KC • Llandow KC • Manchester & Buxton KC • North of Scotland KC • RAF MSA • Rissington KC • Sandown Park KC • Sherington KC • South Yorks KC • Trent Valley KC • Ulster KC • Warden Law KC • West of Scotland KC • Whilton Mill KC

B. General Regulations for all ABkC classes

The general regulations relating to the organisation of a kart race meeting, as specified in the MSA Blue Book, govern a meeting organised to the classes specified in this publication.

B.1 Fuel.

B.1.1 Fuel for Club meetings must conform to the MSA specification defined as – Fuel must be Unleaded petrol to BS EN228, as defined in Section P in the MSA Blue Book.

Notes: The use of power boosting or octane boosting additives by competitors in any fuel is prohibited. Some power/octane boosters are carcinogenic.

B.1.2 When control fuel is specified the fuel for the ABkC Championships will be obtained through the appointed supplier and will conform to the current MSA regulations. Any driver found to be using fuel that does not conform to the blueprint provided by the appointed supplier may be excluded from the ABkC Championship. Unless a waiver is given, all ABkC non-gearbox Championships will use control fuel to ensure that all competitors are racing at an equal level in relation to fuel. All systems of injection and/or spraying of products other than fuel are forbidden.

B.1.3 If a control fuel is specified for use in an event or championship series this must be specified in the Regulations for the event.

B.1.4 Fuel Tanks CIK classes. The tank capacity must be 8 litre minimum.

B.2 The definition of a number plate is any suitable backing material of the appropriate colour if attached to a solid surface such as a sidepod.

B.3.1 ABkC member clubs will acknowledge the 1 to 15 number plates recognising the top fifteen finishers in an ABkC Championship, including the Super One Series ABkC Direct Drive Championship. ABkC member clubs will acknowledge the 1 to 9 number plates recognising the top nine finishers in the ABkC Super Two Series and the Super Four Series Gearbox Championship ~ the 1 to 9 number plates in the 125 Europa Challenge (incorporating rounds of the Super 4) and in Formula 210 National the top nine finishers in the 210 Challenge. Winners of the ABkC Open

MSA KART RACE YEARBOOK – 2006

Championships and the winner of the 210 Challenge O Plate competition may use the "0" plate which will be acknowledged by member clubs. Scottish, Welsh and Northern Ireland championship winners number plates (e.g. S & C) in ABKC recognised classes will be recognised by ABKC clubs, so long as the class is raced fully to the ABKC regulations. When Formula Junior TKM and Intermediate race together, Formula Junior TKM seeded numbers take precedence. When Super 1 and MSA Cadet seeded drivers race together the Super 1 seeds will precede their number with S. ~

B.3.2 The recognition of the above numbers will take place immediately the championship results are no longer provisional.

B.4 Driver Eligibility

B.4.1 Only drivers who are members of ABKC clubs will be eligible to enter for an ABKC championship.

B.4.2 Where the Super One Series or ABKC member club runs an MSA British Championship this class is open to any driver conforming to the MSA regulations for that Championship.

B.4.3 It is a condition of the Club's acceptance of a driver's race entry that they, the driver, agrees to conform to the regulations contained within the current ABKC regulations contained within this publication and subsequent amendments.

B.5 Performance Monitoring Devices. ABKC do not see the use of such devices causing problems, where allowed for a specific class, provided that the track side components of these devices are set up in an area designated by the Club and satisfactory to the Clerk of Course.

B.5.1 Data Logging equipment is recognised as a device that will allow the down loading of information from the kart. A revolution counter that monitors maximum revs is not considered a Data Logging Device.

B.6 Scrutineering

B.6.1 The host club or championship organiser will provide each driver with a Scrutineering Document.

B.6.2 The document will contain space for the numbers of the engines and chassis being used as appropriate for the competition.

B.6.3 The Scrutineering Document must be completed and signed by the driver prior to the commencement of the event. It is the responsibility of the driver to comply with the above but if the driver is under 18 years of age the signature on the scrutineering document must be that of the drivers parent or guardian.

B.6.4 At the completion of any part of the event, if the equipment being used, including the chassis and engine numbers, does not conform in all respects to the data on the Scrutineering Document the driver will be excluded from the meeting.

B.6.5 All equipment recorded on the scrutineering card must conform to the class technical regulations.

B.7 Weight

B.7.1 Scales as Blue Book (N.3.1.8). D.5.1(d) does not apply.

B.7.2 It is the responsibility of the driver to ensure that their equipment conforms to the class weight limits using the "scales of the day".

B.8 Class sub-division

B.8.1 A class may be sub divided to suit local drivers, the suggested sub divisions are indicated here under the heading CLUBS.

B.8.2 Clubs may further divide the race classes into experienced and inexperienced drivers using suitable names that indicate this division to drivers when entering an event.

B.9.1 Karts capable of self starting, either by means of a starter motor being fitted to the engine or by attaching a starter motor, or by means of a pull cord must conform to the following regulations:-

B.9.2 All karts fitted with a self starting system must also be fitted with an operational on/off ignition switch clearly marked with the relevant positions.

B.9.3 The driver of a self start kart must be in the seat when the engine is started or when it is running on the dummy grid. It is recommended that the brake is applied during the starting procedure.

B.9.4 Engines that may be self started must not be started on the dummy grid until the signal is given by the grid marshal. They must be given the opportunity to start before the rest of the karts are given the signal to move off from the dummy grid.

MSA KART RACE YEARBOOK – 2006

- B.9.5** It is forbidden to lift the rear of the kart with the engine running with the purpose of revving the engine further and spinning the rear axle. It is further expressly forbidden to carry this out with the purpose of warming the rear tyres.
- B.9.6** All karts MUST leave the grid in a safe manner at slow speed so as not to endanger pushers.
- B.9.7** Once a practice or race session has started, karts may only be worked on in a place of safety. At no time can work be carried out on a kart while its engine is running (e.g. replacing a chain, exhaust etc.) Any engine fitted with an ignition switch must have this switched off.
- B.9.8** Race stoppages will be in accordance with Blue Book Section N.6.4. ~
- B.9.9** ~
- B.9.10** ~
- B.9.11** ~
- B.10** Tyre bead retention pegs are permitted in all classes.
- B.11** Acoustic engine covers are permitted in all classes.
- B.12** Sprocket protectors are permitted in all classes.
- B.13** ABKc clubs must use the sound level meter at a height of 3.6m unless a waiver has been given (reference Blue Book N 14.11.4)
- B.14 Noise Safety:** The following regulations are highly recommended and may become mandatory in subsequent years. Refer to Blue Book E.12.17.10. It should be noted that the HSE limits (Noise at Work Regulations 1989) for exposure to noise without ear protection is as follows:

Sound level in dB(A)	Maximum exposure period (Hours per day)
90	8
93	4
96	2
99	1
102	0.5
105	0.25

Above these limits it is the legal responsibility for employers to supply ear protection.

- B.14.1** Officials: Every official and helper who is located close to the track should be issued with ear protection. This can be either earmuff style or disposable foam plugs style.
- B.14.2** Competitors: It is highly recommended that every competitor wear ear plugs at all times when driving a kart.
- B.14.3** Dummy Grid and after race collecting area: It is recommended that all personnel in the pit area use ear protection.
- B.14.4** Dummy Grid, collecting area and Spectator Areas close to the track: Signs are recommended advising that ear protection is recommended, and advising a source to purchase such protection.
- B.14.5** Ear plugs: Clubs should have supplies of disposable ear plugs for officials and for sale to spectators and drivers.
- B.15** Fire Extinguishers: All drivers must have present at race meetings a fire extinguisher to BSEN3 standard with a minimum 55B rating. Environmental scrutineers will carry out spot checks in the paddock. (Note: Type B means for use with flammable liquids, and the 55 refers to the capacity. The actual extinguishant is not specified, but Halon is no longer legal in the UK). Fire extinguishers must be kept in the competitors pit space at all times.
- B.16** All karts must be fitted with secondary brake cable as per N14.7. The cable must be a minimum of 1.8mm nominal diameter.
- B.17** Front fairings of the wedge or shovel nose type are ineligible in all classes except gearbox when in long circuit trim with effect from 1.1.2003. The front fairing must otherwise conform to the 2002 or 2003 CIK Front Fairing measurements. The 2002 regulations require a minimum width of 1000mm, must comprise on its front side a vertical surface with a minimum height of 80mm and a minimum length of 300mm located immediately above the ground clearance.
- B.18** A club meeting is defined as a Clubman or National B status event or race which is not a

MSA KART RACE YEARBOOK – 2006

round of a national multi-venue championship, an ABkC championship or any National A meeting, but may be part of the organising club's own single venue club championship.

B.19 Any competitor found to be using chemical treatment on tyres in contravention of N.14.6.8, or using fuel or lubricants in contravention of MSA or championship regulations will be banned from racing at all ABkC clubs and all ABkC championships for a minimum period of one year. Drivers may appeal any decision to the ABkC Steering Group.

B.20 Pitting for repairs is permitted and outside help is allowed in designated pit areas (See Blue Book J.14.1).

C. Direct Drive Class General Regulations

C.1 A clutch is permitted in any of the 100cc classes.

C.2 Any club may organise a "165" weight category for any senior 100cc class, (e.g.100 National/165) but must conform to 165kg minimum weight limit with driver, on the completion of any part of the event. The driver must, in full racing equipment, weigh a minimum of 80kgs at the completion of any part of the event. In Formula Rotax 125 Max/177 the minimum weight limit including driver is 177kg and the driver must, in full racing equipment, weigh a minimum of 85kg at all times. The number plate should have a black or white line of 2.5cm width across the base of the plate in the 165/177 categories.

C.3 Rear view mirrors are forbidden.

C.4 **The ABkC encourages the use of water cooled 100cc engines and regulations to include these have been introduced (see Formula 100 National 10.4). The ABkC recommends the use of acoustic engine covers or other measures such as inserts between head and cylinder fins to reduce noise to the ~ limits. This will be especially applicable in the Formula A, ICA and 100 National classes.**

C.5 It is recommended that clubs incorporate into their supplementary regulations that only one set of slicks be used during a race meeting.

D. Gearbox Class General Regulations

D.1 **It is important to note that at club level all 250cc monocylinder karts may race together for either one or more sets of trophies at the club' s discretion, and similarly all 125cc classes may race together for either one or more sets of trophies. If necessary all gearbox classes may race at the same time.**

D.2 No more than one set of dry tyres may be used in an ABkC gearbox championship meeting for official practice and racing plus one spare front and one spare rear if the original is damaged as specified in SRs. In the event of a tyre being punctured or damaged during racing an extra replacement tyre may be permitted at the discretion of the Chief Scrutineer and Clerk of Course.

D.3 In Formula 210 no form of digital re-programmable ignition is permitted, either by re-programming the ignition system from an external programmer, or by means of add on circuitry. Only a simple add on resistor/capacitor passive circuit is permitted in order to introduce a fixed delay curve to the ignition system. No variation of this curve is permissible whilst the kart is in motion. No active devices such as transistors or integrated circuits are permitted. Devices may be required to be laboratory tested to determine compliance.

D.4 Drive by wire and traction control devices are expressly forbidden.

D.5 Gear change in Formula 210, Formula 125 Open, Formula 125 ICC (U.K.), Formula Super ICC, Formula 250 National and Formula 250E classes must be mechanical with no electrical, electronic, hydraulic or pneumatic operation or assistance. No form of ignition control to aid gear changing is permitted, for example continuous traction system (cts).

D.6 Bodywork Definitions related to karts used on long and short circuits.

D.6.1 Long circuit bodywork trim is recognised as including anything in short circuit bodywork trim plus any nose type conforming to kart general regulations, fully enveloping panels, and wings either full width or part width.

MSA KART RACE YEARBOOK – 2006

- D.6.2** Short circuit bodywork trim is recognised as including a front fairing plus side-protection bars or side-pods to prevent wheel interlocking as per general kart regulations and optionally either a Nassau panel or bubble. Lateral bodywork and front fairings must never cut the plane through the top of the front and rear tyres. – Rear vertical wing ends are permitted but any form of wing or winglets or fully enveloping body panels are not permitted.
- D.6.3** No part of the kart other than the bolts or clamps fixing the floor tray, the engine, the seat and seat stays, or the brake discs, the front kingpin bolts, the sprocket, the wheels and the tyres, may protrude below the bottom of the main longitudinal chassis rails. The floor tray may be clamped direct to the lower edge of the main longitudinal chassis rails.
- D.7** Kevlar and carbon fibre are not permitted in Formula 125 ICC (U.K.), Super ICC, Formula 210 or Formula 250 National except for seats, silencers, Nassau panels and instrument panels, Carbon fibre or Kevlar bodywork is specifically permitted in 125 Open and Formula 250E.
- D.8** Homologation and Registration of Engines for ABkC Championships and Club events.
- D.8.1** ABkC will only allow the registration of new engines into the 125 Open and 250 National classes on a three year basis, the next permitted update of engines in these classes will be for the 2007 season. Engines being put forward for registration should be presented for inspection to the MSA or their designated Association by 1.6.2006. 2004 was the start of a three year period. Engines homologated by the CIK do not need to be separately registered by the MSA unless specified in class regulations.
- D.8.2** In 125 Open engines must be registered by the CIK for use in Formula C, ICC or Super ICC. Any change to this regulation is not anticipated until the 2007 season.
- D.9** Re-programmable ignitions: Provided the ignition system has its ability to be reprogrammed blanked off so that it is impossible to carry out any further re-programming, an ignition unit that is no longer reprogrammable is permitted in 250 National classes.

E. Lap Scoring & Points Scheme Recommendations

After a survey of the procedures used by member clubs when lap scoring and calculating the grids for the finals during a meeting the following suggestions are made to enable the drivers to understand the system.

- E.1** System (A) The first placed driver in any heat will be given 0 points, 2nd place 2 points, 3rd place 3 points and so on until the last placed driver, or System (B), the first placed driver will be given the number of points equal to the maximum number on the grid plus two, the second placed driver the maximum less two, the third the maximum less three and so on.
- E.2** (A) A driver who fails to start a race will take 1 point more than the number of drivers that started the race, or (B) 1 point less than the maximum number of starters.
- E.2.1** If the grid is part of a meeting when drivers may not be racing in every grid used for that class, then a non finishing driver will take (A) 1 point more or (B) 1 points less, than the largest starting grid used in that class.
- E.2.2** Drivers who fail to finish may be given points according to their positions on the lap charts.
- E.3** A driver who is excluded from a race will take (A) 1 point more, or (B) 1 point less, than the number of drivers that started a race, calculated in exactly the way as in section E.2.1. The C of C may decide to increase this penalty under certain circumstances (MSA Blue Book Section O.2).
- E.4** Lap scoring, when transponders are not being used, should take the form of at least three people independently observing the drivers, this is important should a dispute arise in order that a majority decision may be made. The practice of one person "calling" the drivers is not encouraged!
- E.5** In order to enable the judicial procedures to proceed with the minimum of complication the lap scoring team are advised to include the following pieces of information on their lap scoring sheets:
- Race start and finish times.
 - Number of starters and number of finishers.
 - Any other observations pertinent to the result of the race.
- E.6** In accordance with MSA Yearbook C.7.1.9 the Chief Lap Scorer will be a judge of fact in respect of laps completed and finishing order. The Chief Lap Scorer must forward the race finishing order to the results team and the Clerk of the Course.

F. Transponder Lap Scoring

F.1 The ABkC and MSA has introduced transponder lap scoring. The nominated system for all ABkC clubs is the AMB TranX 160 system introduced from 1.1.2001. Every driver will be expected to own a transponder by that time, although clubs may hold back up stocks for hire. Clubs not able to comply may apply to the ABkC for a waiver.

F.2 The transponder must be fitted in an approximately upright position (ie with the 'R' clip to the top) on the back of the seat fitted at a height from the ground at 25cm \pm 5cm measured to any point of the transponder.

F.2.1 Deleted.

F.2.2 Deleted.

F.2.3 Transponders must be mounted in accordance with the manufacturer's recommendations.

F.2.4 If transponder lap scoring is in use then at least one lap scorer must manually lap score each race per N4.9. Transponder decoders must be a certified and approved type.

F.2.5 Where timing by transponder is permitted kart timekeepers must be MSA licenced. Kart timekeepers must be MSA licenced.

G. Tyre Testing Guidelines

G.1 A photo-ionization detector (PID) with a calibration certificate for isobutylene at 100ppm issued in the preceding 12 months may be used for testing for chemical treatment of tyres.

G.2 A reading greater than 3ppm on a PID as described in G.1 with the sampling probe within 5mm of any part of the tyre or tread, where the reading is 50% greater than the average readings found on tyres from other competitors in the race will be deemed evidence of chemical treatment as per MSA Competitors Yearbook regulation N.14.6.8

G.3 If chemical treatment of tyres is established before the race, using the above technique or any other, the competitor will not be allowed to race as chemically treated tyres may constitute a safety risk and contravenes N.14.6.8. If the event regulations allow then the competitor may at the discretion of the chief scrutineer be given the opportunity to change tyre(s). No additional time will be allowed for this.

MSA KART RACE YEARBOOK – 2006

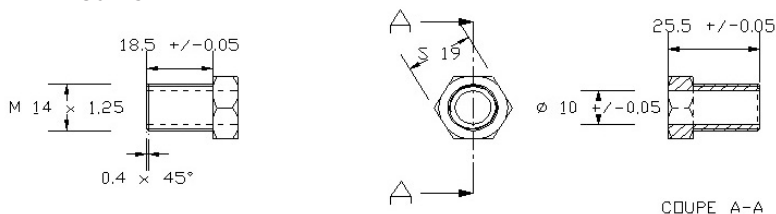
APPENDIX 5 – CIK Yearbook Extracts and MSA Supplementary Information

Due to the CIK Yearbook publication date occurring after the print date for this publication, users are reminded to refer to the definitive regulations as published by the CIK-FIA. These regulations can be found on the CIK-FIA website at the following address: www.cikfia.com

CIK METHOD FOR MEASURING THE VOLUME OF THE COMBUSTION CHAMBER – See CIK Technical Regulations App 1

For clarification note that the insert is normally used without the standard plug washer, but if additional washers or sensors are used under the plug these should also be fitted under the insert.

SPARK PLUG INSERT:



$$\text{Volume Insert} = \pi \times 1 \times 25.5 / 4 = 2 \text{ cm}^3/\text{cc}$$

JUNIOR GEARBOX: PROCEDURE FOR REPLACING CUT-OFF VALVE IN KIEHIN CARBURETTOR FROM HONDA ENGINE

It is permitted to lower the pedestal, which forms the integral cut-off valve, to a limit of 4mm measured from the top face of the carburettor body to the top of the pedestal. A maximum hole of 8mm is permitted to be drilled into the original cut-off valve in order to insert a new cut-off valve. Removal of the webbing in the inner side of the float support is also permitted to the same minimum level of 4mm. No other modifications are permitted for any reason.

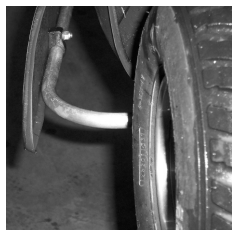
MSA BODYWORK REGULATIONS – GUIDANCE NOTES

Definitions: References to N refer to the MSA Competitors Yearbook. 08 homologation CIK bodywork is the bodywork homologated for the period 2003 to 2008 (sometimes referred to as "2003 CIK homologated bodywork"). When CIK classes are referenced, this means Formula A, ICA and JICA.

GUIDANCE FOR THE USE OF '08' BODYWORK

Clarification of wet conditions when using 08 sidepods.

When wet weather tyres are fitted, they may be inside the sidepods except for variants with ends that are not of the closed-off variety (please refer to pictures below).



Illegal



Legal



Legal

MSA KART RACE YEARBOOK – 2006

APPENDIX 6 – Kart Clubs Recognised by the MSA for the Organisation of Kart Competitions

500 M R C I Ltd (Karting).

Club Sec: F C J Weir, 124 Mountstewart Road, Carrowdore, Newtownards, County Down, BT22 2ES ☎ (h): 02891 861429 ☎ (w): 02891 861429 Comp Sec: F C J Weir, 124 Mountstewart Road, Carrowdore, Newtownards, County Down, BT22 2ES ☎ (h): 02891 861429 ☎ (w): 02891 861429 Chief Marshal: Mr P Ritche, 3 The Liberty, Portaferry, Newtownards, County Down, BT22 1LU.

B A R C (Kart Section).

www.barc.net Club Sec: Mr D I Carter, Thrupton Circuit, Andover, Hampshire, SP11 8PN ☎ (h): 01264 710840 ☎ (w): 01264 882200 Comp Sec: Mr D Wells, Thrupton Circuit, Andover, Hampshire, SP11 8PN ☎ (w): 01264 882200 Chief Marshal: Mr T Jackson, BARC LTD, Thrupton Circuit, Andover, Hampshire, SP11 8PN

Beccles & District Kart Club.

www.bdkc.co.uk Club Sec: Mrs J E Knights, Pathside, 56 London Road, Pakefield, Lowestoft, Suffolk, NR33 7AQ Comp Sec: Mrs J E Knights, Pathside, 56 London Road, Pakefield, Lowestoft, Suffolk, NR33 7AQ Chief Marshal: Mrs J E Knights, Pathside, 56 London Road, Pakefield, Lowestoft, Suffolk, NR33 7AQ

British Kart Club. Club Sec: A Burgess, 15 Moorfield Road, Orpington, Kent, BR6 0XD ☎ (h): 01689 897123 ☎ (w): (f) 01689 890998 Comp Sec: A Burgess, 15 Moorfield Road, Orpington, Kent, BR6 0XD ☎ (h): 01689 897123 ☎ (w): (f) 01689 890998

British Superkart Racing Club Ltd. Club Sec: I Rushforth, 6 Mansfield Avenue, Quorn, Loughborough, Leicestershire, LE12 8BD ☎ (h): 01509 620702 Comp Sec: I Rushforth, 6 Mansfield Avenue, Quorn, Loughborough, Leicestershire, LE12 8BD ☎ (h): 01509 620702

Buckmore Park Kart Club.

www.buckmore.co.uk Club Sec: Mr C Pullman, Buckmore Park Kart Circuit, Maidstone Road, Chatham, Kent, ME5 9QG ☎ (h): 07778 180352 ☎ (w): 01634 661601 Comp Sec: Mrs S Rose, Buckmore Park Kart Circuit, Maidstone Road, Chatham, Kent, ME5 9QG ☎ (h): 01634 661604 ☎ (w): 01634 661604 Chief Marshal: A Eldridge, Buckmore Park Kart Circuit, Maidstone Road, Chatham, Kent, ME5 9QG ☎ (h): 01634 201562

Camberley Kart Club.

www.camberleykc.co.uk Club Sec: Mr M W Scott, 50 Northbrook Road, Worthing, West Sussex, BN14 8PT ☎ (h): 01903 217774 ☎ (w): 01273 430490 Comp Sec: Mrs E Buxton, 7 St Davids Close, Farnborough, Hampshire, GU14 9AQ ☎ (h): 01276 34810 ☎ (w): 0797 980 7981

Chasewater Kart Racing Club.

Club Sec: Mr M Stackhouse, 98 Baltimore Road, Great Barr, Birmingham, B42 1QN ☎ (h): 0121 3585588 ☎ (w): 0121 303 3677 Comp Sec: M Curran, 19 Bronte Drive, Cannock, Staffordshire, WS11 2GL ☎ (h): 01543 271288

Clay Pigeon Endurance Kart Club Ltd.

www.claypigeonraceway.com Club Sec: Mrs C Rennison, Clay Pigeon Raceway, Wardon Hill, Dorchester, Dorset, DT2 9PW ☎ (h): 07729 866384 ☎ (w): 01935 83713 Comp Sec: Mrs C Rennison, Clay Pigeon Raceway, Wardon Hill, Dorchester, Dorset, DT2 9PW ☎ (h): 07729 866384 ☎ (w): 01935 83713

Clay Pigeon Kart Club Ltd.

www.claypigeonkartclub.com Club Sec: Mrs C Rennison, Clay Pigeon Raceway, Wardon Hill, Dorchester, Dorset, DT2 9PW ☎ (h): 07729 866384 ☎ (w): 01935 83713 Comp Sec: Mrs L Appleby, 28 North Street, Stoke-sub-Hamdon, Somerset, TA14 6QP ☎ (h): 01935 822257

Coleraine & District Motor Club (Kart Sect).

www.coleraineanddistrictmc.co.uk Club Sec: George Harrigan, 30 Laurel Park, Coleraine, County Londonderry, BT51 3AQ ☎ (h): 02870 351293 Comp Sec: Mr T Hamill, 92 Newmills Road, Coleraine, County Londonderry, BT52 2JD ☎ (h): 02870 352646 ☎ (w): 02870 352646

Cumbria Kart Racing Club.

www.cumbriakrc.co.uk Club Sec: Mrs S Blair, 14 Findlay Place, Workington, Cumbria, CA14 2XG ☎ (h): 01900 67513 Comp Sec: Mrs M Fell, 50 Newton Road, Dalton-in-Furness, Cumbria, LA15 8NF ☎ (h): 01229 463748

MSA KART RACE YEARBOOK – 2006

Daytona Kart Racing Club. www.spkc.tk

Club Sec: Mr I Eastwood, Mayfield House, Brooklands Lane, Weybridge, Surrey, KT13 8UX ☎ (h): 01932 849400 ☎ (w): 0207 7930464
Comp Sec: Mrs R Eastwood, Mayfield House, Brooklands Lane, Weybridge, Surrey, KT13 8UX ☎ (h): 07775 793036 ☎ (w): 0845 644 5502
Chief Marshal: Mr J P Goddard, 9a Sunninghill Road, Sunninghill, Ascot, Berkshire, SL5 7BX

East Of Scotland Kart Club. www.eskc.net

Club Sec: C A Stephen, 3 Burn Brae Park, Kincardine, Fife , FK10 4RP ☎ (h): 01259 731 644 ☎ (w): 07970 104 774
Comp Sec: C A Stephen, 3 Burn Brae Park, Kincardine, Fife , FK10 4RP ☎ (h): 01259 731 644 ☎ (w): 07970 104 774

Fleet Kart Club.

paulbowlerpromotions.co.uk Club Sec: Mrs S Bowler, 69 Kenilworth Road, Fleet, Hampshire, GU51 3AY ☎ (h): 01252 625781

Forest Edge Kart Club. www.fekc.co.uk

Club Sec: J Crawford, Lilacs, Mount Pleasant, Lymington, Hampshire, SO41 8LS ☎ (h): 01590 678409 ☎ (w): 01202 294113
Comp Sec: Mrs C Parsons, Barnes Hill Farm, Milton Abbas, Blandford Forum, Dorset, DT11 0BB ☎ (h): 01258 880165
Chief Marshal: D J V Underhill, 63 Dacombe Drive, Upton, Poole, Dorset, BH16 5JJ ☎ (h): 01202 623696 ☎ (w): 07817 424688

Grampian Kart Club. Club Sec: Mrs M

Robertson, 88a Low Street, New Pitsligo, Fraserburgh, Aberdeenshire, AB43 6NR ☎ (h): 01771 653613 ☎ (w): 01771 653880
Comp Sec: Mr P McRobbie, Rosedale, Queen Street, Huntley, Aberdeenshire, AB54 8EB ☎ (h): 01466 793675 ☎ (w): 0777 614 0109

Guernsey Kart & Motor Club LBG (Kart).

www.gmccc.co.uk Club Sec: S Tullier, La Ponderosa, Rue De La Ronde Cheminee, Castel, Guernsey, GY5 7GF ☎ (h): 01481 252404 ☎ (w): 01481 717000
Comp Sec: H Robilliard, Ajamais, 6 Hougue Mague Lane, Capelles, St Sampson, Guernsey, GY2 4WA ☎ (h): 01481 247892 ☎ (w): 01481 247892

Hunts Kart Racing Club Ltd.

www.hkrc.co.uk Club Sec: Mr D Stimpson, The Paddocks, PO Box 203, Nothampton, NN7 4WZ ☎ (h): 01604 820874 ☎ (w): 07860 323894
Comp Sec: Mrs D Freeman, 76 Guntons Close, Soham, Ely, Cambs, CB7 5DN ☎ (w): 01353 720390
Chief Marshal: P Smith, 14 Highfield Crescent, Kettering, Northamptonshire, NN15 6JS

Isle Of Man Kart Racing Association Ltd.

www.iomkra.com Club Sec: Mrs J Hammonds, 11 Reginald Close, Governors Hill, Douglas, Isle Of Man, IM2 7AJ ☎ (h): 01624 617158 ☎ (w): 07624 428066
Comp Sec: Mrs A Clarke, 86 Snaefell Road, Willaston, Isle Of Man , IM2 6NG ☎ (h): 01624 672 375 ☎ (w): 07624 425 475
Chief Marshal: Mr A Sumner, 1 Derby Drive, Peel, Isle Of Man, IM5 1NT ☎ (h): 01624 842127

Jersey Motor Cycle & Light Car Club (Kart).

www.jerseymotorsport.com Club Sec: Mrs C Bertie-Roberts, The Chequered Flag, 19 Oxford Road, St Helier, Jersey, JE2 4LJ ☎ (h): 01534 852952 ☎ (w): 01534 852952
Comp Sec: Mrs C Bertie-Roberts, The Chequered Flag, 19 Oxford Road, St Helier, Jersey, JE2 4LJ ☎ (h): 01534 852952 ☎ (w): 01534 852952

Kent Kart Racing. www.kkrc.co.uk

Club Sec: C Hilder, 94 Leonard Road, Greatstone, New Romney, Kent, TN28 8RU ☎ (h): 07901 670819 ☎ (w): 01233 639762
Comp Sec: C Hilder, 94 Leonard Road, Greatstone, New Romney, Kent, TN28 8RU ☎ (h): 07901 670819 ☎ (w): 01233 639762

Lincolnshire Kart Racing Club.

www.lkrc.uk.com Club Sec: Mrs L Healy, 35 Barnet Avenue, Sheffield, S11 7RN ☎ (h): 0114 2302381
Comp Sec: Miss D Thornsby, 25 Norton Lawns, School Lane Close, Sheffield, South Yorkshire, S8 8HF ☎ (h): 0114 274 7373 ☎ (w): 0114 274 5092

Lion Kart Racing. Club Sec: Ms A Yates,

2 Rope Lane, Shavington, Crewe, CW2 5DT ☎ (h): 01270 663674
Comp Sec: Ms A Yates, 2 Rope Lane, Shavington, Crewe, CW2 5DT ☎ (h): 01270 663674

MSA KART RACE YEARBOOK – 2006

Long Circuit Racing Kart Club.

www.longcircuit-racingkart-club.co.uk
Club Sec: T Bateman, 7 Burns Close, Kidsgrove, Stoke-On-Trent, Staffordshire, ST7 4JD
☎ (h): 01782 771120 ☎ (w): 07831 854896
Comp Sec: T Bateman, 7 Burns Close, Kidsgrove, Stoke-On-Trent, Staffordshire, ST7 4JD ☎ (h): 01782 771120 ☎ (w): 07831 854896
North Of Scotland Kart Club. **www.nskc.co.uk**
Club Sec: E Sutherland, Rhives House, Rhives, Golspie, Sutherland, KW10 6SD ☎ (h): 01408 633459 ☎ (w): 01408 633437 Comp Sec: E Sutherland, Rhives House, Rhives, Golspie, Sutherland, KW10 6SD ☎ (h): 01408 633459 ☎ (w): 01408 633437

R A F Motor Sports (Kart Sect). Club Sec: Fit Lt PRC Saunders, SEWO, RAF Lyneham, Chippenham, Wiltshire, SN15 4PZ ☎ (w): 01249 896153 Comp Sec: FS L A Britten, 99 Squadron, RAF Brize Norton, Caterton, Oxfordshire, OX8 3LX ☎ (w): 01993 842551 ext. 7845

Rissington Kart Club.

www.rissykartclub.com Club Sec: Mrs D Wynell-Mayow, 20 Springwater Close, Northway, Tewkesbury, Gloucestershire, GL20 8SE
☎ (h): 01684 299292 ☎ (w): 07966 202447
Comp Sec: J K Dredge, 4 Goodwood Close, Burghfield Common, Reading, RG7 3EZ
☎ (h): 0118 9836070

Rochester Motor Club (Kart Section).

www.f6karting.com Club Sec: Mr R D McCabe, 5 Old Loose Close, Loose, Maidstone, Kent, ME15 0BJ ☎ (h): 01622 745 714 ☎ (w): 07976 275079 Comp Sec: Mr R Sheffield, 103 Tudor Avenue, Worcester Park, Surrey, KT4 8TU
☎ (h): 0208 330 5810 ☎ (w): (m) 07710 288074

Shenington Kart Racing Club.

www.sheningtonkrc.co.uk Club Sec: G M Smith, Stonycroft, Godsons Lane, Napton, Southam, Warwickshire, CV47 8LX ☎ (h): 01926 812177 Comp Sec: S Game, 16 Graham Road, Bicester, Oxfordshire, OX26 2HP ☎ (h): 01869 320157 ☎ (w): (f) 01869 247981

South Yorkshire Kart Club.

www.syk.fsnet.co.uk Club Sec: Mrs M Plane, 167 Furlong Road, Goldthorpe, Rotherham, S63 9PT ☎ (h): 01709 890312 Comp Sec: Mrs V Lord, 7 Abney Grange, Mossley, Ashton-under-Lyne, Lancashire, OL5 9LP ☎ (h): 01457 832803 Chief Marshal: C Charlesworth, 5 Sankey Square, Goldthorpe, Rotherham, South Yorkshire, S63 9AJ

Trackside Racing Kart Club.

www.tracksideracing.co.uk Club Sec: S Hart, Bayford Meadow Kart Circuit, Symmonds Drive, Eurolink Ind Estate, Sittingbourne, Kent, ME10 3RY ☎ (w): 01795 473300 Comp Sec: S Hart, Bayford Meadow Kart Circuit, Symmonds Drive, Eurolink Ind Estate, Sittingbourne, Kent, ME10 3RY ☎ (w): 01795 473300 Chief Marshal: Mr B Scott, Bayford Meadows Kart Circuit, Symmonds Drive, Eurolink Ind Estate, Sittingbourne, Kent, ME10 3RY

Trent Valley Kart Club. **www.tvkc-pfi.co.uk**

Club Sec: Mr N Edwards, 4 Grosvenor Close, Retford, Nottinghamshire, DN22 7HP
☎ (h): 01777 700323 ☎ (w): 07718 625405
Comp Sec: P Connelly, 37 Lower Mickleton, Methley, Leeds, LS26 9JH ☎ (h): 01977 515204 ☎ (w): (f) 01977 516839

Two Counties Kart Club.

www.planetkarting.co.uk Club Sec: B Taylor, 22 Old Castle Road, Rodwell, Weymouth, Dorset, ☎ (h): 01305 784336 Comp Sec: J Shone, 125 Lanehouse Rocks Road, Weymouth, Dorset, DT4 9HY ☎ (h): 01305 774074

Warden Law Kart Club.

www.wardenlawkartclub.co.uk Club Sec: Mrs A Johnston, 7 Thornby Close, Ushaw Moor, Durham, DH7 7NN ☎ (h): 0191 3734339 ☎ (w): 0191 3833519 Comp Sec: A Laws, 2 Matfen Place, Fenham, Newcastle Upon Tyne, NE4 9DN ☎ (h): 0191 256 8109 ☎ (w): 0191 273 0830 Chief Marshal: D Whetstone, C/o Karting North East, Hangmans Lane, Warden Law, Sunderland, SR3 2PR

West Of Scotland Kart Club.

www.wskc.co.uk Club Sec: Mr D Lane, 5 Netherbank View, Edinburgh ☎ (h): 0131 664 9317 Comp Sec: I Nelson, 20 Glenside Gardens, Armadale, Bathgate, West Lothian, EH48 3RA ☎ (h): 01501 731870 Chief Marshal: G Gribben, 73 Thrashbush Road, Airdrie, Lanarkshire, ML6 6QS

Whilton Mill Kart Club.

www.whiltonmillkartclub.co.uk Club Sec: Mr D Parker, Whilton Mill Kart Club, Whilton Lock, Daventry, Northamptonshire, NN11 5NH Comp Sec: R Chapman, 23 Foxglove Close, Buckingham, Buckinghamshire, MK18 1FU
☎ (w): 01280 816512 Chief Marshal: C Wells, 22 Prestwold Way, Northampton, NN3 8JH

MSA KART RACE YEARBOOK – 2006

APPENDIX 7 – Recognised Groups Composed of Individual Clubs Not Necessarily Recognised for the Promotion of Motor Competitions

Association of British Kart Clubs (The ABkC Steering Group is recognised by the MSA as the Kart Regional Committee)

Secretary: G M Smith, Stoneycroft, Godsons Lane, Napton, Southam, Warwicks CV47 8LX.
☎ (h) 01926 812177 & Fax. email: info@abkc.org.uk

Member Clubs (as at 1.10.05) are:

Bayford Meadow KC • Beccles & District KC • BRDC Stars of Tomorrow • Buckmore Park KC • Camberley KC • Chasewater KC • Clay Pigeon KC • Cumbria KC • Dunkeswell KC • East of Scotland KC • Forest Edge KC • Guernsey Kart & Motor Club • Grampian KC • Hoddesdon KC • Hunts KC • Isle of Man • Kent Kart Racing Club • Lincolnshire KC • Llandow KC • Manchester & Buxton KC • North of Scotland KC • RAF MSA • Rissington KC • Sandown Park KC • Shenington KC • South Yorks KC • Trent Valley KC • Ulster KC • Warden Law KC • West of Scotland KC • Whilton Mill KC

British Superkart Association

Secretary: Mr I Rushforth, 6 Mansfield Avenue, Quorn, Loughborough LE12 8BD. ☎ 01509 620702

Northern Karting Federation

Secretary: Mrs Anne Laws, 2 Matten Place, Fenham, Newcastle Upon Tyne, NE4 9DN, ☎ (h): 0191 273 0830

Member Clubs (as at 1.10.05) are:

Cumbria KC – Lincolnshire KC – Manchester & Buxton KC – Rissington KC – Shenington KC – Warden Law KC – West of Scotland KC

National Kart Racing Association

Secretary: Mrs J Shone, 125 Lane House Rocks Road, Weymouth, Dorset DT4 9HY.
☎ h) 01305 774074.

Member Clubs: (as at 1.10.05) are:

Camberley KC – Chasewater KC – Clay Pigeon KC - Dunkeswell KC – East of Scotland KC – Forest Edge KC – Grampian KC – Hoddesdon KC - Kent KC – Kingdom KC – Lincolnshire KC – Llandow KC – South Yorkshire KC – Trent Valley KC – Two Counties KC – Warden Law KC.

Wessex Kart Association

Secretary: Mrs L Baugh, Dhoni, 10 Parsons Green, St Florence, Nr Tenby SA70 8NG. ☎ 01834 871845 (5.30pm to 8pm).

Member Clubs: Cardiff KC – Clay Pigeon KC – Forest Edge KC – Llandow KC – Rissington KC.

OTHER APPROVED ORGANISATIONS COMPOSED OF ASSOCIATIONS OF CLUBS OR BODIES RECOGNISED AS RESPONSIBLE ORGANISATIONS IN THE SPHERE OF MOTOR SPORT

Kart Officials Club

R Sheffield, 103 Tudor Avenue, Worcester Park, Surrey KT4 8TU. ☎ 07710 288074.

MSA KART RACE YEARBOOK – 2006

APPENDIX 8 – MSA Licensed Kart Race Tracks

(with Club telephone number where known)

- P **Aghadowey** Northern Ireland
L **Anglesey** Bodorgan, Anglesey - LL62 5LP
T **Barton Stacey** Nr Andover, Hampshire. ☎ 01590 678409
P **Bayford Meadow** Sittingbourne, Kent - ME10 3RY. ☎ 01795 479599
P **Bishops court** Six miles from Downpatrick, Northern Ireland - BT30 7EY
P **Blackbushe** Off A30 at Blackbushe Airport, Yateley, Surrey. ☎ 01256 389761
P **Boyndie (Kart)** Three miles west of Banff, Grampian. ☎ 01466 799299
L **Brands Hatch** Fawkham, Longfield, Kent - DA3 8NG
P **Buckmore Park** Chatham, Kent - ME5 9QG. ☎ 01634 201562
L **Cadwell Park** Louth, Lincolnshire - LN11 9SE
L **Castle Combe** Chippenham, Wiltshire - SN14 7EY
P **Clay Pigeon** Wardon Hill, Dorchester, Dorset - DT2 9PW. ☎ 01823 443287
P **Crail** On the eastern tip of Fife - KY10 7EX. ☎ 01382 529428
L **Croft** Croft-on-Tees, Nr Darlington - DL2 2PN
P **Darley Moor** Nr. Whyceston, Ashbourne, Derbyshire - DE6 2ET
P **Daytona Milton Keynes** H4 Danstead Way, Milton Keynes, Bucks - MK13 8NP
L **Donington** Castle Donington, Derby - DE74 2RP
P **Dunkeswell** Five miles from Honiton, Devon. ☎ 0871 871 1400
P **Ellough** Two miles from Beccles, Suffolk. ☎ 01502 572223
P **Fulbeck** Off A17, eight miles from Newark, Cambridgeshire. ☎ 0114 2302381
P **Glan y Gors Park** Glan Y Gors Park, Cerrigydrudion, Conwy - LL21 0RU. ☎ 01606 883856
T **Jurby** Jurby Aerodrome, Isle of Man. % 01624 817722
P **Karting** North East (was Warden Law) Off A690, near Houghton le Spring, Co Durham - SR3 2PR. ☎ 0191 2730830
P **Kimbolton** 10 miles southwest of Huntingdon, Cambridgeshire. ☎ 01933 222239
L **Kirkistown** Rubane Road, Cloughey, Portavogie, Newtownards
L **Knockhill** Nr Dunfermline, Fife - KY12 9TF
P **Lakeland Stadium (was Rowrah)** Four miles from Frizington, Cumbria. ☎ 01900 67513
P **Littleferry (was Golspie)** Littleferry Kart Circuit, Golspie, Sutherland - KW10 6TG. ☎ 01349 884036
P **Llandow** Four miles west of Cowbridge, South Glamorgan - CF61 12G. ☎ 07947 038333
P **Lydd** Herons Park, Kent - TN29 9JH
L **Lydden** Wotton, Nr Cantebury, Kent - CT4 6RX
L **Mallory Park** Kirkby Mallory, Leicester - LE9 7QE
P **Nutts Corner (Kart)** Four miles from Crumlin, Northern Ireland. ☎ 02891 822187
L **Oulton Park** Little Budworth, Taporley, Cheshire - CW6 9BW
P **P F International** Stragglethorpe, near Stubton, Lincolnshire - NG32 2AY. ☎ 01777 700323
L **Pembrey** On A484, eight miles from Llanelli, Dyfed - SA16 0HZ. ☎ 02920 733348
P **Rissington** RAF Station south of Stow on the Wold, Glos. ☎ 0118 942 5535
P **Rye House** Hoddesdon, Herts - EN11 0EH
P **Sandown Park** Esher, Surrey - KT10 8AN. ☎ 01372 471312
P **Shenington** Off A422 Stratford Rd, 8 miles from Banbury - OX15 6NZ. ☎ 01926 812177
L **Silverstone** Silverstone, Northants - NN12 8TN
L **Snetterton** Norwich, Norfolk - NR16 2JU
T **Sorel Point** St John, Jersey. ☎ 01534 872220
P **St Sampsons** Guernsey, Channel islands - GY2 4BD. ☎ 01481 247892
L **Stowe** Silverstone, Northants - NN12 8TN
P **Summerlee (was Larkhall)** Hamilton, Strathclyde - ML9 2UL. ☎ 0141 775 1506
P **Three Sisters** Bryn Road, Ashton in Makerfield, Wigan, Lancs. ☎ 01257 252722
L **Thruxton** Andover, Hampshire - SP11 8PN
P **Whilton Mill** Whilton Locks, Daventry, Northants - ML9 2UL. ☎ 01280 816512
P **Wombwell** Dorothy Hyman Stadium, 6 miles from Barsley. ☎ 0161 633 4519

KEY: P – Permanent Track. T – Temporary Track. L – Car Race Circuit (Long Circuit)

MSA KART RACE YEARBOOK – 2006

APPENDIX 9 – MSA/ARKS Club Examiners

BAYFORD MEADOWS KC

Ian Ward

Bayford Meadows KC, Symmonds Drive
Eurolink Ind Estate, Sittingbourne
Kent ME10 3RY

☎ 0780 238 4624 (M)

BECCLIS & DKC

Richard Lock

16 Deepdale, Carlton Colville,
Suffolk NR33 8TU

☎ 01502 530553 (H)

CAMBERLEY KC

Ian M Johnson

96 Minley Road, Cove
Farnborough, Hants GU14 9QW

☎ 01252 520056 (H)

CHASEWATER KC

Terry Bateman

81 Spey Drive, Whitehill, Kidsgrove,
Stoke on Trent ST7 4AF

☎ 01782 771120

COLERAINE & DMC

Evan Freeman

15 Cashel Road, Macosquin, Coleraine
Co Londonderry BT51 4OW

☎ 02870 352052 (H)

CUMBRIA KRC

Malcolm Fell

50 Newton Road, Dalton in Furness
Cumbria LA15 8NT

☎ 01229 463748 (H)

DUNKESWELL KRC

Andrew Parr

14 Rochester Road, Taunton
Somerset TA2 7LD

☎ 01823 279596 (H)

Harold A Sutcliffe

12 Shallowford Close, Egguckland,
Plymouth, Devon PL6 5TN

☎ 01752 706923

EAST OF SCOTLAND KC

D Graham Lowe

25a Campfield Road, Broughty Ferry
Dundee DD5 2NG

☎ 01382 738522 (H)

FOREST EDGE KC

Peter A Bryceson

Clappgate Cottage, Newbury Road
Whitchurch, Hants RG28 7PW

☎ 01256 893663 (H)

Peter Thomas

12 Saxby Close, Barnham
West Sussex PO22 0GN

☎ 01243 553637

GRAMPIAN KC

Scott Rennie

Elgosar, Tupperty, Ellon
Aberdeenshire B41 8LX

☎ 01358 724478

George Stephen

31 Seafield Street, Portlnockie, Buckie
Moray AB56 4LX

☎ 01542 841800

GUERNSEY K & MC

Claude Ford

1 Symphony Park, Hacse Lane, Vale
Guernsey GY3 5DS

☎ 07781 138382 (M)

ISLE OF MAN KR ASSOCIATION

Richard M Messenger

2 Harbour View, Onchan, Isle of Man IM3 2AN

☎ 01624 629971 (H)

Gordon J Sweetapple

18 Odins Way, Ballakillowey, Castletown
Isle of Man IM9 4BQ

☎ 01624 832992 (H)

JERSEY K & MC

Andrew Davis

2 Trois Chenes Court, Le Mont de la Chessnaie
St Lawrence, Jersey JE3 1HR

☎ 01534 861238 (H)

KENT KRC

Dannie F Pennell

2 Springpond Road, Dagenham
Essex RM9 5DP

☎ 020 8517 9973 (H)

LINCS KC

Steve Hamilton

12 Eadon Place, Northgate Street,
Great Yarmouth, Norfolk NR30 1BQ

☎ 01493 846843

MSA KART RACE YEARBOOK – 2006

Rob Cannell

10 Malpas Road, Derbyshire DE4 3HT
☎ 01629 584092

LLANDOW KC

Nigel Kent

Brynteg Farm Road, Cefn Cribwr, Brigend
South Wales CF32 0HA
☎ 01656 720218

NORTH OF SCOTLAND KC

Roy S Wilson

Waterboard Cottage, Strathpeffer Road
Dingwall, Ross-shire IV15 9QF
☎ 01349 862486 (H)

RAF MOTOR SPORTS ASSOC (KART)

Liam Britten

Burnbrae, 42 Alvescot Road, Carterton
Oxon OX18 3JJ
☎ 01993 844392

RISSINGTON KC

Michael Chalmers

40 Dulnan Close, Tilehurst, Reading
Berks RG30 4YW
☎ 01189 425535 (H)

ROCHESTER MC F6

Roger Sheffield

103 Tudor Avenue, Worcester Park
Surrey KT4 8TU
☎ 07710 288074 (M)

SHENINGTON KRC

Mark Allen

Cavalier Cottage, Edgehill
Banbury, Oxon OX15 6DJ
☎ 01295 678116

Chris Smith

26 Orchard Road, Hook Norton, Banbury
Oxon OX15 5LX
☎ 01608 737145 (H)

South Yorks KC

Brian Lord

Engelsea, 9 Fern Close, Springhead
Oldham OL4 4NS
☎ 0161 633 4519

TRENT VALLEY KC

Nigel A Edwards

4 Grosvenor Close, Retford, Notts DN22 7HP
☎ 01777 700323 (H)

TWO COUNTIES KC

Ron Shone

125 Lanehouse Rocks Road
Weymouth, Dorset DT4 9HY
☎ 01305 774074

ULSTER KC

Percy Jordan

193 Annadale Flats, Ormeau Road, Belfast
Northern Ireland BT7 3AX
☎ 02890 283822 (H)

Gordon Duncan

45 Castle Avenue, Moira, Craigavon
Co Armagh BT67 4NH
☎ 02892 612097

WARDEN LAW KC

Peter R Knibb

9 Meadowgate Drive, Tayfield Grange
Hartlepool, Cleveland TS26 0RH
☎ 01429 863154 (H)

Mark Nicholson

13 Upleatham Village, Redcar
Cleveland TS11 8AG
☎ 01287 623483 (H)

MSA KART RACE YEARBOOK – 2006

APPENDIX 10 – Kart Championships and Co-ordinators (Provisional)

BSA Superkart Championship

Long Circuit gearbox kart championship for F125 ICC, F125 Open, 250 National, Division 1 Superkarts and MSA British Championship for 250 National class. For details and registration contact: Mr Ian Rushforth, 6 Mansfield Avenue, Quorn, Loughborough, Leics LE12 8BD. ☎ 01509 620702.

Formula South East Championship

Formula 6 Association, through Rochester Motor Club Limited, organise four stroke kart race meetings for all age groups. For details and registration contact: Mr Roger Sheffield, 103 Tudor Avenue, Worcester Park, Surrey KT4 8TU. ☎ 07710 288074.

BRDC Stars of Tomorrow

Direct drive classes for Formula Cadet, MiniMax, Junior Max, Junior Gearbox and Super ICC including the MSA British Championship for Formula Cadet. There are expected to be qualifying rounds in some classes. For details and registration contact: Carolyn Hoy, Snowball Farm, Westbury, Brackley, Northants NN13 7JP. ☎ 01280 706906, Fax: 01280 701508.

Northern Karting Federation

Includes ABkC S4 Championships for ICC UK and 250 National. Contact: Mrs A Laws, 2 Matfen Place, Fenham, Newcastle On Tyne, NE4 9DN

National Kart Racing Association

Clubmans Championship for most classes. Scotland, North of England, South of England regional championship and grand final combining all regions. For details and registration contact: Ron Shone, 125 Lanehouse Rocks Road, Weymouth, Dorset DT4 9HY. ☎ 01305 774074.

Scottish Super Series

Direct drive classes. Drivers must be a member of an ASKC club. For details and registration contact: Carol Blanchard, 16 Corrie Terrace, Muir of Ord, Ross & Comarq, IV6 7QR. ☎ 01463 870875

Super Two ABkC National Four Stroke Kart Championship

ABkC National 4 stroke championship incorporating the Honda Challenge for Honda Cadet, Junior Senior and World Formula classes. Details and registration from www.Ratpro.co.uk or contact Roger Abbey-Taylor at: 10 Island Close, Staines, Middlesex TW18 4YZ. ☎ 01784 462624

2005 Super 4 ABkC National Gearbox Kart Championships

ABkC national championships short circuit gearbox classes. For details and registration contact:: ABkC Secretary.

2005 Elf BTE Lawline Super One National Kart Championships

Direct Drive Classes including MSA British Championships for Formula A and JICA, and ABkC National Championships for ICA, 100 National, Rotax Max, TKM Junior and Senior, Cadet, Rotax Junior UK and Mini Max. For details and registration contact: Mrs Sonja Game, 16 Graham Road, Bicester, Oxon OX26 2HP. ☎ 01869 320157.

210 Challenge

Details are available from Mrs Kate Bateman, 'The Villiers', 36 South Road, Aston Field, Bromsgrove, Worcs B60 3EL. ☎ 01527 870834.

MSA KART RACE YEARBOOK – 2006

APPENDIX 11 – Provisional Championship Calendar

BRDCStars of Tomorrow

(For Junior Max, Mini Max, MSA British Cadet Championship, ABkC National Super 4 Junior Gearbox and ABkC National Super 4 Super ICC Championships.

6-7 May	Rowrah
3-4 June	Shenington
24-25 June	Silverstone (Stowe)
TBA	Silverstone for Super ICC only
22-23 July	Larkhall
19-20 August	Genk (Belgium)
23-24 Sept	Buckmore Park (Not Super ICC)

Elf BTE Lawline Super One National Kart Championships.

All registered drivers will be able to enter each round, there will be no pre-qualifying rounds

MSA Renault British Kart Championship and Junior Championship (Formula A and JICA) plus the Renault ABkC Bridgestone ICA Championship, ABkC Vega Formula 100 National and ABkC Dunlop Formula Cadet (Comer) National Championships.

18-19 March	Three Sisters
29-30 April	Shenington
20-21 May	PF International
17-18 June	Larkhall
29-30 July	Clay Pigeon
9-10 Sept	Rowrah

TKM ABkC Championship for Formula TKM Extreme, Junior TKM and Junior TKM Intermediate

11-12 March	Buckmore Park
15-16 April	Kimbolton
13-14 May	Whilton Mill
10-11 June	Rowrah
26-27 August	Fulbeck
7-8 October	Shenington

Rotax Max ABkC Championship for Formula Rotax, Junior Max UK and Mini Max

25-26 March	Clay Pigeon
22-23 April	Lydd
27-28 May	Warden Law
8-9 July	PF International
16-17 Sept	Three Sisters
21-22 October	Buckmore Park

Formula WTP Little Green Man Championship

16 April	Warden Law
14 May	Kimbolton
11 June	Wombwell
16 July	Shenington
12 August	Rowrah
3 Sept	PF International
24 Sept	Whilton Mill

Super Two ABkC Four Stroke Kart Championship

Comprising the ABkC Honda Challenge (Cadet, Junior Standard and Heavy, Senior) and World Formula

TBA	Likely to be a one weekend championship
-----	---

ABkC InterNations Challenge

TBA August	Llandow (Wales)
------------	-----------------

ABkC O Plate Allocations

TBA	Larkhall (Formula A, 100 National & JICA)
TBA	Glan y Gors (TKM 2 & 4-stroke classes)
TBA	Rowrah (Rotax Classes)
TBA	Ryehouse (Cadet)
TBA	Llandow (Honda Junior & Senior)
TBA	Rowrah (Gearbox, 250/210 only provisional)

2005/2006 Super Libre/JICA Winter Series

22 January	PF International
5 February	Shenington

NKRA Championship with regional qualifiers Scotland:

Grand Final -

Northern Kart Federation Championships

Direct drive classes, Junior Gearbox, Super 4 ICC UK and Super 4 250 National. Dates to be advised

MSA KART RACE YEARBOOK – 2006

Other Important Dates

15-16 July	Llandow	Welsh Championships
5-6 August	PF International	TV Kart Masters
12-13 August	Kimbolton	TKM Festival
2-3 Sept	Rissington	Midland Championship
TBA	TBA	Kart Grand Prix (Gearbox Long Circuit)

International Calendar

CIK-FIA Karting Championships

CIK-FIA World Karting (Formula A) Championship & ICA World Cup

28 Sept-1 Oct Angerville (F)

CIK-FIA European Formula A Championship

4-7 May La Conca (I)
22-25 June Varennes s/Allier (F)
17-20 August Ampfing (D)

CIK-FIA Super ICC World Cup

31 Aug-3 Sept Mariembourg (B)

CIK-FIA European Super ICC Championship

4-7 May La Conca (I)
22-25 June Varennes s/Allier (F)

CIK-FIA European ICC Championship

4-7 May La Conca (I)
22-25 June Varennes s/Allier (F)
31 Aug-3 Sept Mariembourg (B)

CIK-FIA European Superkart Championship

TBA TBA

CIK-FIA Formula A and Juniors Monaco Kart Cup

13-15 October Monaco (MC)

CIK-FIA European ICA and Juniors Championships

Qualification – West

13-16 July Braga (P)

Finals – ICA

17-20 August Ampfing (D)

Finals – Junior

31 Aug-3 Sept Mariembourg (B)

CIK-FIA ICA and Juniors Viking Trophy

30 Jun-2 Jul Goteburg (S)

CIK-FIA Formula A World Cup & CIK-FIA Asia-Pacific ICA Championships

26-28 May Suzuka (J)

Rotax Mojo Max Euro Challenge

24-26 March TBA

19-21 May TBA

28-30 July TBA

22-24 Sept TBA

WS KARTING INTERNATIONAL SERIES

(For JICA, ICA, Formula A, ICC)

4-5 Feb La Conca (I)

1-2 April Garda (I)

10-11 June Mariembourg (B)

16-17 Sept Jesolo (I)

Please see www.msauk.org, www.cikfia.com and www.abkc.org.uk for confirmed dates.

MSA KART RACE YEARBOOK – 2006

APPENDIX 12 – Kart Race Fixtures – 2006

DATE	VENUE	STATUS	CLUB
January			
8th January	Lydd Raceway	B	Kent KRC
8th January	Wombwell	B	SYKC
8th January	Kimbolton	B	HKRC
14th January	Kirkistown	C	500 MRC Ireland
22nd January	PF Int'l	C	Trent Valley KC
22nd January	Bayford Meadows	B	Club 125
28th January	Ellough Park Raceway	B	Beccles & District KC
28th January	Blackbushe	B	Camberley KC
29th January	Whilton Mill	C	Whilton Mill KC
29th January	Buckmore Park	C	Buckmore Park KC
29th January	3 Sisters	B	Manchester & Buxton KC
29th January	Rye House	C	Rye House KC
February			
5th February	PF Int'l	C	Trent Valley KC
5th February	Shenington	C	Shenington KRC
5th February	Larkhall	C	West of Scotland KC
5th February	Rye House	C	Rye House KC
11th February	Kirkistown	C	500 MRC Ireland
12th February	Lakeland Stadium Rowrah	C	Cumbria KRC
12th February	Lydd Raceway	B	Kent KRC
12th February	Wombwell	B	SYKC
12th February	Kimbolton	B	HKRC
12th February	Clay Pigeon Raceway	C	Clay Pigeon KC
12th February	Glan Y Gors	B	Manchester & Buxton KC
19th February	Crail Kart Track	C	East of Scotland KC
19th February	Buckmore Park	C	Buckmore Park KC
19th February	Lydd International	B	Club 125
19th February	Shenington	C	Shenington KRC
19th February	Warden Law	B	Warden Law KC
25th February	Blackbushe	B	Camberley KC
25th February	Ellough Park Raceway	B	Beccles & District KC
26th February	Whilton Mill	C	Whilton Mill KC
26th February	3 Sisters	B	Manchester & Buxton KC
March			
5th March	PF Int'l	C	Trent Valley KC
5th March	Little Rissington	B	Little Rissington KC
5th March	Buckmore Park	B	Club 125
5th March	Barton Stacey	B	Forest Edge KC
5th March	Rye House	C	Rye House KC
5th March	Larkhall	C	West of Scotland KC
12th March	Boyndie	C	Grampian KC
12th March	Lakeland Stadium Rowrah	B	Cumbria KRC
12th March	Kimbolton	B	HKRC
12th March	Clay Pigeon Raceway	C	Clay Pigeon KC
12th March	Sorel Port	B	Jersey Kart & Motor Club
12th March	Lydd Raceway	B	Kent KRC

MSA KART RACE YEARBOOK – 2006

12th March	Wombwell	B	SYKC
12th March	Glan Y Gors	B	Manchester & Buxton KC
18-19th March	Three Sisters	A	Shenington KRC
19th March	Crail Kart Track	C	East of Scotland KC
19th March	Warden Law	B	Warden Law KC
19th March	Buckmore Park	C	Buckmore Park KC
19th March	Barton Stacey	End	Forest Edge KC/Endurance Drivers Club
19th March	Shenington	C	Shenington KRC
25th March	Ellough Park Raceway	B	Beccles & District KC
25th March	Blackbushe	B	Camberley KC
25th March	Nuttscorner	C	Ulster KC
25/26th March	Clay Pigeon Raceway	A	Clay Pigeon KC
26th March	Sorel Point	B	Jersey Kart & Motor Club
26th March	Littleferry Circuit	C	North of Scotland KC
26th March	3 Sisters	B	Manchester & Buxton
26th March	Whilton Mill	C	Whilton Mill KC

April

2nd April	PF Int'l	C	Trent Valley KC
2nd April	Larkhall	B	West of Scotland KC
2nd April	Daytona Milton Keynes	B	Club 125
2nd April	Rye House	C	Rye House KC
2nd April	Little Rissington	B	Little Rissington KC
2nd April	Barton Stacey	B	Forest Edge KC
9th April	Boyndie	C	Grampian KC
9th April	Lakeland Stadium Rowrah	B	Cumbria KRC
9th April	Sorel Point	B	Jersey Kart & Motor Club
9th April	Clay Pigeon Raceway	C	Clay Pigeon KC
9th April	Glan Y Gors	B	Manchester & Buxton KC
9th April	Lydd Raceway	B	Kent KRC
9th April	Shenington	C	Shenington KRC
9th April	Wombwell	B	SYKC
15/16th April	Kimbolton	B	HKRC
16th April	Crail Kart Track	C	East of Scotland KC
16th April	Buckmore Park	B	Buckmore Park KC
16th April	Bayford Meadows	B	Club 125
16th April	Warden Law	B	Warden Law KC
17th April	Nuttscorner	C	Ulster KC
18th April	Nuttscorner	C	Ulster KC
22nd April	Kirkistown	B	500 MRC Ireland
22nd April	Blackbushe	B	Camberley KC
22/23rd April	Lydd Raceway	A	Kent KRC
23rd April	Thruyton	End	Forest Edge KC/Endurance Drivers Club
23rd April	Sorel Point	B	Jersey Kart & Motor Club
23rd April	Whilton Mill	C	Whilton Mill KC
23rd April	3 Sisters	B	Manchester & Buxton KC
29th April	Ellough Park Raceway	B	Beccles & District KC
29th April	Nuttscorner	C	Ulster KC
29/30th April	Shenington	A	Shenington KRC
30th April	Littleferry Circuit	C	North of Scotland KC
30th April	Lydd international	B	Club 125

MSA KART RACE YEARBOOK – 2006

May

5/6/7 May	Lakeland Stadium Meeting	A	Cumbria KRC
7th May	Little Rissington	B	Little Rissington KC
7th May	Barton Stacey	B	Forest Edge KC
7th May	Larkhall	B	West of Scotland KC
7th May	Bayford Meadows	B	Club 125
7th May	PF Int'l	C	Trent Valley KC
7th May	Rye House	C	Rye House KC
13th May	Kirkistown	B	500 MRC Ireland
14th May	Boyndie	C	Grampian KC
14th May	Kimbolton	B	HKRC
14th May	Sorel Point	B	Jersey Kart & Motor Club
14th May	Lakeland Stadium Rowrah	B	Cumbria KRC
14th May	Wombwell	B	SYKC
14th May	Lydd Raceway	B	Lydd Raceway
14th May	Clay Pigeon Raceway	C	Clay Pigeon KC
14th May	Glan Y Gors	B	Manchester & Buxton KC
20/21st May	PF Int'l	A	Trent Valley KC
21st May	Crail Kart Track	C	East of Scotland KC
21st May	Warden Law	B	Warden Law KC
21st May	Buckmore Park	B	Buckmore Park KC
21st May	Barton Stacey	End	Forest Edge KC/Endurance Drivers Club
21st May	Shenington	C	Shenington KRC
27th May	Elough Park Raceway	B	Beccles & District KC
27th May	Nuttscorner	C	Ulster KC
27th May	Blackbushe	B	Camberley KC
28th May	3 Sisters	B	Manchester & Buxton KC
28th May	Littleferry Circuit	C	North of Scotland KC
28th May	Whilton Mill	C	Whilton Mill KC

June

3/4th June	Shenington	A	Shenington KRC
4th June	Little Rissington	B	Little Rissington KC
4th June	Whilton Mill	B	Club 125
4th June	Larkhall	B	West of Scotland KC
4th June	Lakeland Stadium Rowrah	B	Cumbria KRC
4th June	PF Int'l	C	Trent Valley KC
4th June	Rye House	C	Rye House KC
4th June	Barton Stacey	B	Forest Edge KC
10/11th June	Lakeland Stadium Rowrah	A	Cumbria KRC
11th June	Boyndie	C	Grampian KC
11th June	Kimbolton	B	HKRC
11th June	Sorel Point	B	Jersey Kart & Motor Club
11th June	Lydd Raceway	B	Kent KRC
11th June	Wombwell	B	SYKC
11th June	Clay Pigeon Raceway	C	Clay Pigeon KC
11th June	Glan Y Gors	B	Manchester & Buxton KC
17th June	Kirkistown	C	500 MRC Ireland
17/18th June	Shenington	C	Shenington KRC
18th June	Crail Kart Track	C	East of Scotland KC
18th June	Thruyton	End	Forest Edge KC/Endurance Drivers Club
18th June	Buckmore Park	B	Buckmore Park KC

MSA KART RACE YEARBOOK – 2006

18th June	Warden Law	B	Warden Law KC
24th June	Ellough Park Raceway	B	Beccles & District KC
24th June	Nuttscorner	C	Ulster KC
24th June	Blackbushe	B	Camberley KC
25th June	Whilton Mill	C	Whilton Mill KC
25th June	Littleferry Circuit	C	North of Scotland KC
25th June	Sorel Point	B	Jersey Kart & Motor Club
25th June	3 Sisters	B	Manchester & Buxton KC

July

2nd July	PF Int'l	C	Trent Valley KC
2nd July	Bayford Meadows	B	Club 125
2nd July	Larkhall	B	West of Scotland KC
2nd July	Little Rissington		Little Rissington KC
2nd July	Rye House	C	Rye House KC
2nd July	Barton Stacey	B	Forest Edge KC
8/9th July	PF Int'l	A	Trent Valley KC
9th July	Boyndie	C	Grampian KC
9th July	Kimbolton	B	HKRC
9th July	Sorel Point	B	Jersey Kart & Motor Club
9th July	Lakeland Stadium Rowrah	B	Cumbria KRC
9th July	Clay Pigeon Raceway	C	Clay Pigeon KC
9th July	Wombwell	B	SYKC
9th July	Lydd Raceway	B	Kent KRC
9th July	Glan Y Gors	B	Manchester & Buxton KC
16th July	Crail Kart Track	C	East of Scotland KC
16th July	Shenington	C	Shenington KRC
16th July	Warden Law	B	Warden Law KC
16th July	Buckmore Park	B	Buckmore Park KC
22nd July	Blackbushe	B	Camberley KC
23rd July	Barton Stacey	End	Forest Edge KC/Endurance Drivers Club
23rd July	Sorel Point	B	Jersey Kart & Motor Club
23rd July	Whilton Mill	C	Whilton Mill KC
23rd July	3 Sisters	B	Manchester & Buxton KC
29th July	Ellough Park Raceway	B	Beccles & District KC
29th July	Nuttscorner	C	Ulster KC
29/30th July	Clay Pigeon Raceway	A	Clay Pigeon KC
30th July	Littleferry Circuit	C	North of Scotland KC
30th July	Bayford Meadows	B	Club 125

August

5/6th August	PF Int'l	A	Trent Valley KC
6th August	Little Rissington	B	Little Rissington KC
6th August	Barton Stacey	B	Forest Edge KC
6th August	Rye House	C	Rye House KC
6th August	Larkhall	B	West of Scotland KC
11th August	Kimbolton	B	HKRC
12th August	Crail Kart Track	B	East of Scotland KC
13th August	Crail Kart Track	B	East of Scotland KC
13th August	Sorel Point	B	Jersey Kart & Motor Club
13th August	Lakeland Stadium Rowrah	B	Cumbria KRC
13th August	Lydd Raceway	B	Kent KRC

MSA KART RACE YEARBOOK – 2006

13th August	Clay Pigeon Raceway	C	Clay Pigeon KC
13th August	Glan Y Gors	B	Manchester & Buxton KC
20th August	Boyndie	C	Grampian KC
20th August	Lydd International	B	Club 125
20th August	Warden Law	B	Warden Law KC
26th August	Blackbushe	B	Camberley KC
26th August	Ellough Park Raceway	B	Beccles & District KC
26/27 August	Nuttscorner	A	Ulster KC
27th August	Lakeland Stadium Rowrah	B	Cumbria KRC
27th August	Littleferry KC	C	North of Scotland KC
27th August	3 Sisters	B	Manchester & Buxton KC
27th August	Whilton Mill	C	Whilton Mill KC
28th August	Lakeland Stadium Rowrah	B	Cumbria KRC

September

2/3rd September	Little Rissington	A	Little Rissington KC
3rd September	PF Int'l	C	Trent Valley KC
3rd September	Larkhall	B	West of Scotland KC
3rd September	Barton Stacey	B	Forest Edge
3rd September	Rye House	C	Rye House KC
9/10th September	Lakeland Stadium Rowrah	A	Cumbria KRC
10th September	Boyndie	C	Grampian KC
10th September	Clay Pigeon Raceway	C	Clay Pigeon KC
10th September	Kimbolton	B	HKRC
10th September	Wombwell	B	SYKC
10th September	Lydd Raceway	B	Kent KRC
16th September	Kirkistown	B	500 MRC Ireland
16/17 September	Three Sisters	A	Shenington
17th September	Crail Kart Track	C	East of Scotland KC
17th September	Glan Y Gors	B	Manchester & Buxton KC
17th September	Shenington	C	Shenington KRC
17th September	Warden Law	B	Warden Law KC
17th September	Buckmore Park	B	Buckmore Park KC
17th September	Lydd International	B	Club 125
23rd September	Blackbushe	B	Camberley KC
24th September	Thruyton	End	Forest Edge KC/Endurance Drivers Club
24th September	Whilton Mill	C	Whilton Mill KC
24th September	Sorel Point	B	Jersey Kart & Motor Club
24th September	Littleferry Point	C	North of Scotland KC
24th September	Clay Pigeon	B	Club 125
24th September	3 Sisters	B	Manchester & Buxton KC
30th September	Ellough Park Raceway	B	Beccles & District KC
30th September	Nuttscorner	C	Ulster KC
30th September	Rye House	C	Rye House KC

October

1st October	Rye House	C	Rye House KC
1st October	PF Int'l	C	Trent Valley KC
1st October	Larkhall	C	West of Scotland KC
1st October	Barton Stacey	B	Forest Edge

MSA KART RACE YEARBOOK – 2006

1st October	Little Rissington	B	Little Rissington KC
8th October	Lakeland Stadium Rowrah	B	Cumbria KRC
8th October	Kimbolton	B	HKRC
8th October	Boyndie	C	Grampian KC
8th October	Sorel Point	B	Jersey Kart & Motor Club
8th October	Clay Pigeon Raceway	C	Clay Pigeon KC
8th October	Wombwell	B	SYKC
8th October	Lydd Raceway	B	Kent KRC
8th October	Glan Y Gors	B	Manchester & Buxton KC
14th October	Nuttscorner	C	Ulster KC
15th October	Craill Kart Track	C	East of Scotland KC
15th October	Warden Law	B	Warden Law KC
15th October	Shenington	C	Shenington KRC
15th October	Buckmore Park	B	Buckmore Park KC
22nd October	Barton Stacey	End	Forest Edge KC/Endurance Drivers Club
22nd October	Whilton Mill KC	C	Whilton Mill KC
22nd October	Sorel Point	B	Jersey Kart & Motor Club
22nd October	3 Sisters	B	Manchester & Buxton KC
28th October	Blackbushe	B	Camberley KC
28th October	Ellough Park Raceway	B	Beccles & District KC
29th October	Bayford Meadows	B	Club 125
29th October	Littleferry Circuit	C	North of Scotland KC
29th October	Shenington	C	Shenington KRC

November

5th November	PF Int'l	C	Trent Valley KC
5th November	Rye House	C	Rye House KC
5th November	Little Rissington	B	Little Rissington KC
5th November	Larkhall	C	West of Scotland KC
5th November	Barton Stacey	B	Forest Edge
7/8th November	Shenington	A	Shenington KRC
11th November	Kirkistown	C	500 MRC Ireland
12th November	Lakeland Stadium Rowrah	B	Cumbria KRC
12th November	Glan Y Gors	B	Manchester & Buxton KC
12th November	Kimbolton	B	HKRC
12th November	Lydd Raceway	B	Kent KRC
12th November	Wombwell	B	SYKC
12th November	Clay Pigeon Raceway	C	Clay Pigeon KC
19th November	Craill Kart Track	C	East of Scotland KC
19th November	Thrupton	End	Forest Edge KC/Endurance Drivers Club
19th November	Warden Law	B	Warden Law KC
19th November	Shenington	C	Shenington KRC
19th November	Buckmore Park	B	Buckmore Park KC
25th November	Ellough Park Raceway	B	Beccles & District KC
25th November	Nuttscorner	C	Ulster KC
25th November	Blackbushe	B	Camberley KC
26th November	Whilton Mill	C	Whilton Mill KC
26th November	3 Sisters	B	Manchester & Buxton

MSA KART RACE YEARBOOK – 2006

December

3rd December	PF Int'l	C	Trent Valley KC
3rd December	Shenington	C	Shenington KRC
3rd December	Rye House	C	Rye House KC
3rd December	Larkhall	C	West of Scotland KC
3rd December	Clay Pigeon Raceway	C	Clay Pigeon KC
9th December	Kirkistown	C	500 MRC Ireland
10th December	Lakeland Stadium Rowrah	B	Cumbria KRC
10th December	Lydd Raceway	B	Kent KRC
10th December	Kimbolton	B	HKRC
10th December	Wombwell	B	SYKC
17th December	Buckmore Park	B	Buckmore Park KC
27/28 December	Warden Law	A	Warden Law KC
30th December	Nuttscorner	C	Ulster KC
30th December	Blackbushe	B	Camberley KC

MSA KART RACE YEARBOOK – 2006

APPENDIX 13 – Summary of Main Kart Classes for 2006 with popular options

Class	Number Plate/No.	Weight kg (with driver) Short/Long/BSA	Ages	Tyres – Dry	Tyres – Wet	Comments
Comec Cadet	Yellow/Black	97 (S60 = 95)	8-12	Dunlop SL3 'RAC'	KT3 'RAC'	60cc: Comec sealed engine, clutch
Honda Cadet	Yellow/Red	100	8-12	Dunlop SL3 'RAC'	KT3 'RAC'	GX160 sealed engine, clutch, budget
WTP Cadet	Green/White	98 B1 / 103 B5	8-12	Dunlop SL3	KT3	60cc: WTP sealed engine, clutch, B5 Electric Start
Junior TKM 2S	Blue/White	129	11-16	Maxxis SL3	F TKM	As TKM with restrictor; optional clutch
Junior TKM 2S Interim'te	White/Black	144 (driver 62+)	11-16	Maxxis SL3	F TKM	As above, higher weight.
Junior TKM K4S	Blue/Yellow	140	11-16	Maxxis SL3	F TKM	Jnr version of F TKM 4S, clutch, restrictor
Honda Junior	Blue/White	145/152	11-16	Dunlop SL1	KT3	2 x GX120 (145kg) or 2 x GX160 (152kg), clutch
Honda Junior Heavyw't	Blue/White*	160 (driver 62+)	11-16	Dunlop SL1	KT3	1 x GX120 + 1 x GX160, clutch
Junior Blue	Red/White	See regs	11-16	Maxxis HG2	WT4	IAEM Lynx 100cc, clutch, driver weight/ restrictors
Junior Rotax MiniMax	Yellow/Black	135	11-16	Vega SL8 'JAG'	Vega W2 'JAG'	Restricted version of J Rotax
Junior Rotax	Red/White	145	13-16	Vega SL8 'JAG'	Vega W2 'JAG'	Jnr version of F Rotax 125 Max
JICA	Yellow/Black	135	13-16#	B'stone YGB 'MSA'	YEJ	CIK piston port 100cc, clutch
Junior Gearbox	Red/White	155	13-16	Burriss SS 55	Dunlop KT8	Jnr entry level gearbox class, 85cc, 6 speed
TKM 2S Extreme	Red/White	148/ Heavy 163	16	Maxxis SL3	F TKM	BT82 piston port, optional clutch
TKM K4S	Red/Yellow	162	16	Maxxis SL3	F TKM	200cc 4 stroke, clutch
Libre	Per class regs	155	16	Dunlop SL4 'ABKC'	YEJ, KT6 or W2 'GB'	Open grid class for 100cc d/drive classes
F 100 National	Green/White	155	16	Vega SL7 'GB'	W2 'GB'	Earlier rotary valve engines, 24mm carb
Formula Blue	Blue/White	See regs	16	LeCont LH TAB	LeCont W TAB or Maxxis WT4	Selected engines, club/economy class
Rotax 125 Max	Blue/White	162	16	Vega SL6 'JAG'	Vega W2 'JAG'	125cc d/drive commercial class
Rotax 125 Max/177	Blue/White*	177	16	Vega SL6 'JAG'	Vega W2 'JAG'	Heavyw't version with 85kg min driver weight
Honda Senior	White/Red	175	16	Dunlop SL1	KT3	2 x GX160, clutch
Formula A	Yellow/Black	150	16	Dunlop DCM	KT10	CIK, latest rotary/reed engines
ICA	White/Black	150	16	B'stone YGB 'MSA'	YEJ	CIK, reed valve, 2.4mm carb
125 ICC (UK)	Green/White	180	16	Dunlop SL4 'ABKC'	KT10	125cc reed valve with 30mm carburettor
Super/ICC	Yellow/Black	172	16	Dunlop SL4 'ABKC'	KT10	Lightw't version of above
125 Open	Blue/White	185	16	Dunlop SL4 'ABKC'	KT10	Reed or rotary valve 125cc engines
250 National	White/Black	195/200	16+	Maxxis XP5	WT8	Motorcross 250cc engines + Div 2 Superkart
250E	Green/White	210	16+	Open	Open	Twin cylinder 250 + Rotax 257 + 125 twins
Formula 210	Red/White	165/190	16	Dunlop SL3	KT5/6/8	Classic Villiers 197 or replicas

Key: * With baseline strip + means 17 years age minimum for long circuit # means from 12 years with min 12 months National A licence.

NOTES

NOTES

NOTES

NOTES

NOTES

NOTES

PUBLICATIONS, TECHNICAL PAPERS & CLUB EQUIPMENT



MOTOR SPORTS ASSOCIATION
UNITED KINGDOM

Subject to their availability the products and their prices listed below are correct at the time of going to press, but may be changed without further notice.

PUBLICATIONS (VAT zero rated)

MSA Competitors' Yearbook	£22.00
MSA Officials' Yearbook	£15.00
MSA Kart Race Yearbook	£7.00
MSA Motor Club Manual	£25.00
UK Circuit Guide	£45.00
Karting Circuit GuidePOA
Euro Circuit Guide	£45.00
Motor Vehicles (Competition & Trials) Regulations 1969/74/76	£7.00

CLUB EQUIPMENT (VAT standard rated incl.)

Club Membership cards	200 for £15.00
Signing-On Sheets - Competitors/OfficialsFOC available on website
Signing-On Sheets - MediaFOC available on website
"Prohibited Area" rigid PVC warning signsper pack of 5 £35.00
"Motor Sports Can Be Dangerous" rigid PVC warning signper pack of 5 £35.00
"Special Stage Warning" day-glo warning signPOA
"Special Stage Danger" day-glo warning signPOA

TECHNICAL PAPERS (VAT zero rated, except † = standard rate)

MSA Rollage Certificate	*each £15.00
MSA Historic Rally Vehicle Identity Form Registration	†£50.00
MSA Competition Car Log Book payable to Scrutineer	£27.00
MSA Homologation Fiche (Kart)	†each £22.00
FIA Historic Technical Passport Application (including App. K Copy, excluding Registration Fee)	†each £250.00
FIA Current Homologation Papers for any UK car	†each £50.00
FIA Current Homologation - Extension of any UK car	†each £25.00
FIA Homologation Papers for any non UK car	†each £82.00
FIA Current Homologation - Extension for any non UK car	†each £25.00
FIA Lapsed Homologation Papers for any UK car	†each £40.00
FIA Lapsed for any non UK car	†each £50.00
†MSA Original Roll Cage Registration (Trade only)	†£180.00
†MSA Production Kit Car Forms (Trade only) - Registration	each £150.00
MSA Production Kit Car Forms copy	each £15.00

* If to be posted to an address overseas £5.00 to be added to cover postage

† If to be posted to an address overseas £8.00 to be added to cover postage

**For the above items, please address order(s) to:
Sales Dept, Motor Sports Association, Colnbrook SL3 0HG**

Purchase on-line from www.msauk.org

ZOOM

KARTMART



Exclusive UK Distributors of
BRIGGS & STRATTON World Formula Engines



Agents for



Zoom Kart Market,
Millward House
Eastfield Side
Sutton-in-Ashfield
Nottinghamshire
NG17 4JW

Tel: (01623) 512463

E-mail: sales@zoomkarts.com

Website: www.zoomkarts.com

SHOP ON LINE . . .

Visit our website on

www.zoomkarts.com

Looking for a class that will launch you into big-time motor racing? Or perhaps a class that will provide the most cost effective close racing you'll ever get.

The answer for both is the same...Formula TKM.



Where Champions Are Born

Our TKM 2 & 4 stroke classes have helped develop so many motor racing stars. Jenson Button, Anthony Davidson, Gary Paffett and Robbie Kerr a few of the hundreds.

They showed their true skills by taking top titles in the class. Their skill and driving ability the key factor.

Equally thousands of other drivers have had fantastic, close, cost effective and fun racing at club level in Formula TKM. The natural starting point for every karter whether Junior, Intermediate or Senior.

Thanks to carefully controlled regulations and well designed equipment you don't need a bulging cheque book or a technical degree.

So whether you choose traditional 2-stroke racing with the option of a clutch and a really simple, easy to use and long life engine... or 4-stroke with convenient ultra modern technology, clutch/electric remote start as standard and a supremely reliable long life engine, the answer is Formula TKM.

For full details on the Formula TKM classes and our TKM 2005 S1 and F6 championships or Maxxis Kimbolton TKM Festival call us now or check out our web-site.



TAL-KO
RACING

Sunderland Road, Sandy, Beds SG19 1QY
Tel 01767 682020 Fax 01767 691622
email: info@tal-ko.com www.tal-ko.com