



gold series[®]

Camfil Farr	Application brochure
Air Pollution Control - B-1000-27	
Camfil Farr - clean air solutions	



the ultimate dust collector ... the Gold Series®



The Gold Series® cartridge dust and fume collector combines enhanced performance with ease of service while cleaning the work environment of irritating dust and fumes. The new Gold Series cartridge dust and fume collector may be used for a wide range of pollution control and product recovery applications.

The Gold Series is the next generation dust collector, building on 25 years of experience with Camfil Farr's Tenkay® dust collector.

Enhanced performance features with exceptional ease of installation and service make the Gold Series the ultimate choice for a clean workplace.

Meeting airflow requirements with a 25% smaller housing allows the Gold Series to deliver premium performance at a competitive price and take up less factory floor space. The service benefits are numerous offering faster, trouble-free change-out of cartridges.



Featuring the Gold Cone in the center of the cartridge, cleaning is accomplished by pulse waves that emanate outward from this inner cone providing enhanced cleaning for more efficient operation, longer cartridge life and reduced service requirements.

In most cases the Gold Series meets the 5mg/m³ or less emissions required to recirculate the air back into the work place on non-hazardous dusts.

The Gold Series, along with other Camfil Farr dust collectors, are manufactured in our hi-bay facility in Jonesboro, AR (pictured below).



Gold Cone cartridge

Camfil Farr Gold Series cartridges have an expanded capacity due to the patented inner Gold Cone. This inner cone increases media area and provides uniform dispersion of back-pulsed air. It also opens up more useable space for air flow in the filter house.

The new Poly-Tech™ media is the most advanced pulse-cleaned media ever made. Also available is the Poly-Tech HE (High Efficiency) with a melt blown surface treatment yielding a filtration efficiency of 99.99% on 0.5µ and larger particles. The media now comes standard with silicone impregnation for high humidity resistance.

Featuring an injection-molded inner cone in the center of the cartridge, cleaning is

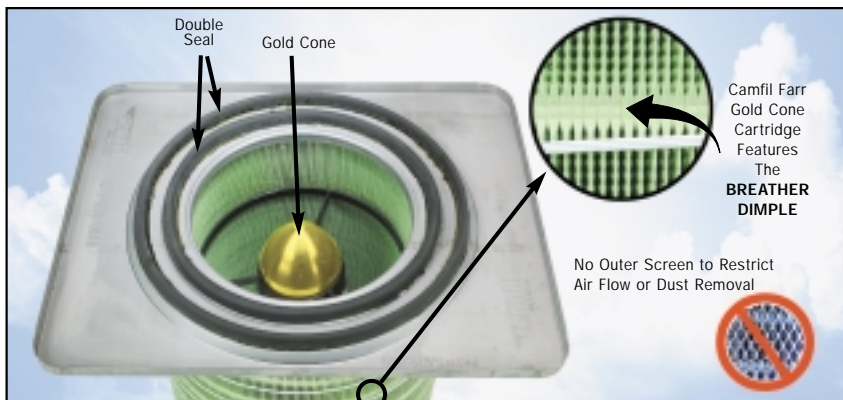
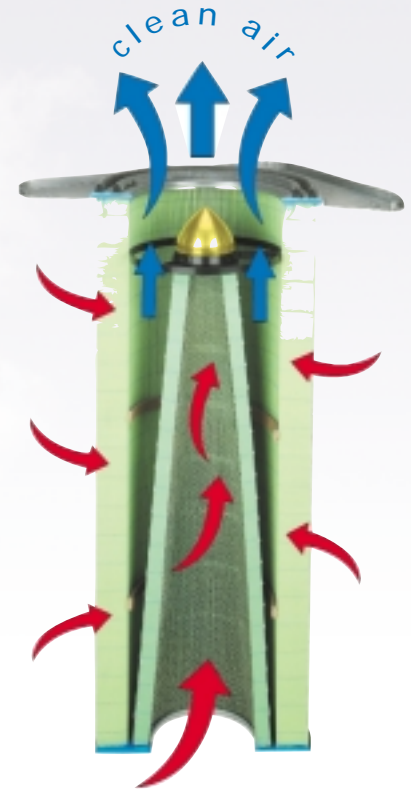
accomplished by pulse waves that emanate outward from this inner cone providing enhanced cleaning for more efficient operation, longer cartridge life and reduced service requirements.

Continuous double seal gaskets give added insurance against leaks. No other filter design gives you a double seal barrier.

The Breather Dimple™ opens up the pleats allowing more effective cleaning and lower pressure drop.

Key benefits:

- High filtration efficiency
- Excellent energy performance
- Long element life



Camfil Farr Gold Cone Cartridge and Cam Lock Feature covered by Patent Numbers 5,972,059 & 4,322,231



air pollution control

Gold Series® offers modular des

Gold Series features

Gold Series collectors feature a new modular design for optimum field flexibility. Each module accommodates airflows up to 5,000 cfm using four cartridges mounted in a symmetrical frame. Additional modules may be added to meet total airflow requirements beyond to 100,000 cfm.

The Gold Series module is constructed of 7 gauge carbon steel. The door, hopper, inlet, and panels are all 10 gauge steel. Most other dust collectors on the market are only 12 gauge. All Gold Series dust collectors are powder painted for unsurpassed weather and corrosion resistance.

Designed in modules, the cross flow inlet, access door, explosion vent, and other components can be installed on any side of the module to meet individual needs. The available configurations are virtually unlimited. This gives you a customized dust collector, delivered fast.

The vertical design of Camfil Farr cartridges provides more efficient pulsing of dust, thus eliminating uneven dust loading associated with horizontally mounted cartridges.

Enhanced performance features with exceptional ease of installation and service make the Gold Series the ultimate choice for a clean workplace.



Easy Access Door

- No Knobs To Lose or Drop
- No Threads To Bind
- Mechanically Attached Seal
- Heavy 10 gauge Construction
- Lock-Out/Tag-Out Capability
- Reversible For Left/Right Opening



Easy changeout of Gold Cone cartridges with patented Cambar action that positively seals the cartridges without using threads or knobs.

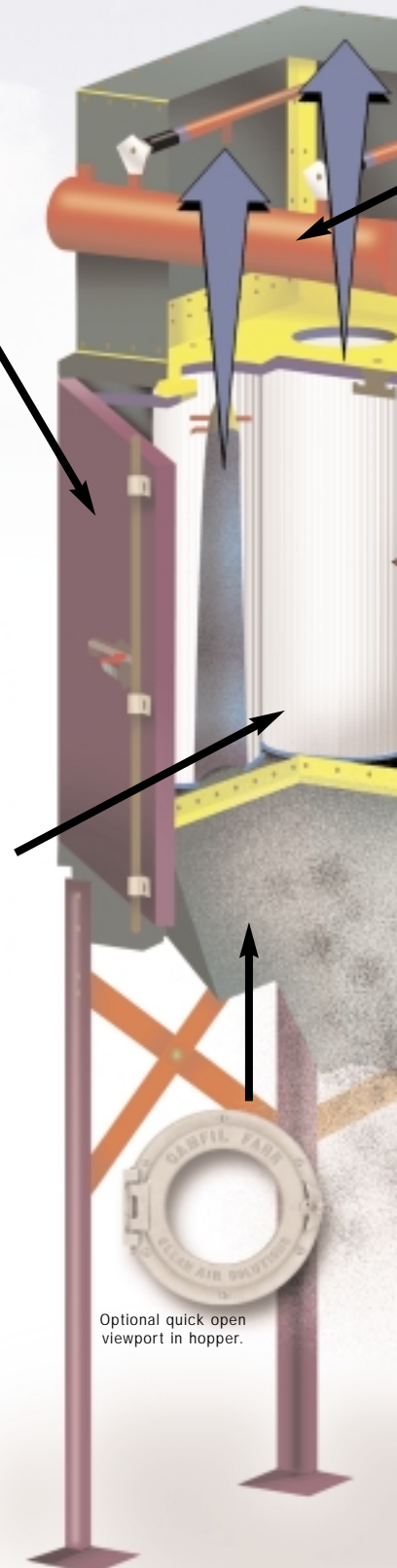
CONTROL OPTIONS



DCT 1000

P4

DETERMINATOR

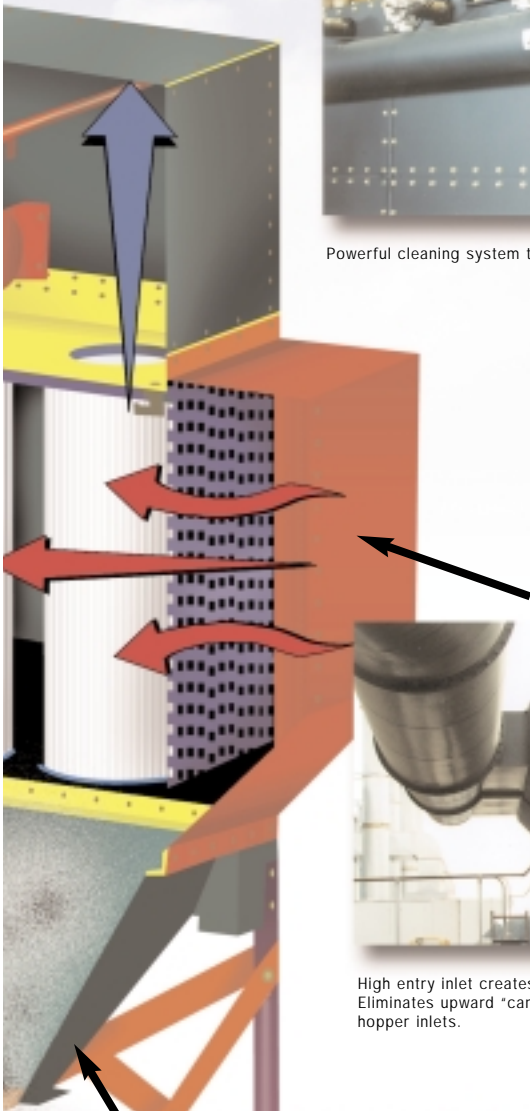


Optional quick open viewport in hopper.

ign for optimum field flexibility



Powerful cleaning system to provide long filter life.



High entry inlet creates a cross flow through the filters. Eliminates upward "can" velocities associated with traditional hopper inlets.



Gold Series components are individually powder coated prior to assembly for superior corrosion resistance.

Easy maintenance

The service benefits are numerous. A new heavy gauge access door uses an easy-to-use lift cambar in place of the usual threaded handle, facilitating entry into the collector. The door is fully-reversible for access from either side and has an exclusive lockout feature for worker safety. Cartridge service is further simplified through a cambar system that allows faster, trouble-free changeout.

Gold Series options:

- Explosion Venting
- Increase Leg Length
- Rotary Airlock
- Hopper Access Door
- Drum Cover Kit
- Sprinkler Coupling
- Quick Open Access
- Dust Level Indicator
- Panel in Clean Air Chamber
- Dust Bin w/Drawers
- Common Trough Hopper
- Internal Compressed Air Header
- Large Pyramid Hopper
- Stainless Steel Construction
- Special Paint
- Various Inlet Baffles
- NEMA 7/9 Solenoid Enclosure

Gold Cone filter media options:

450 Sq. Ft. Cartridges (Media Area) - 180°F Max

PTS - Poly-Tech Standard with Moisture Resistant Treatment

PTC - Poly-Tech Carbon Impregnated (static drain)

PTF - Poly-Tech Fire-Retardant Treatment

PTU - Poly-Tech Ultra High Efficiency

350 Sq. Ft. Cartridges (Media Area) - 180°F Max

PTSW - Poly-Tech Standard Wide Pleat

PTCW - Poly-Tech Carbon Impregnated Wide Pleat

PTFW - Poly-Tech Fire Retardant Wide Pleat

PTUW - Poly-Tech Ultra High Efficiency Wide Pleat

200 Sq. Ft. Cartridges (Media Area) -

250°F Max, Washable

DPS - Durapleat® Standard Spun-Bond Polyester

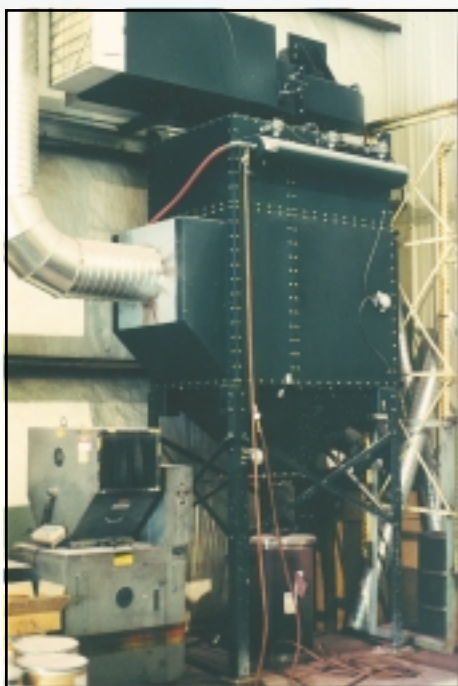
DPA - Durapleat® Aluminized Finish (static drain)

DPO - Durapleat® Oleophobic Treatment (moisture resistant)

DPT - Durapleat® with Teflon Membrane

air pollution control

Gold Series installations



GS6 with top mount fan and safety monitoring filter on color pigment blending



GS96 on paper dust



GS48 on railcar sandblasting



Front and side view of GS120 on metal flame spraying



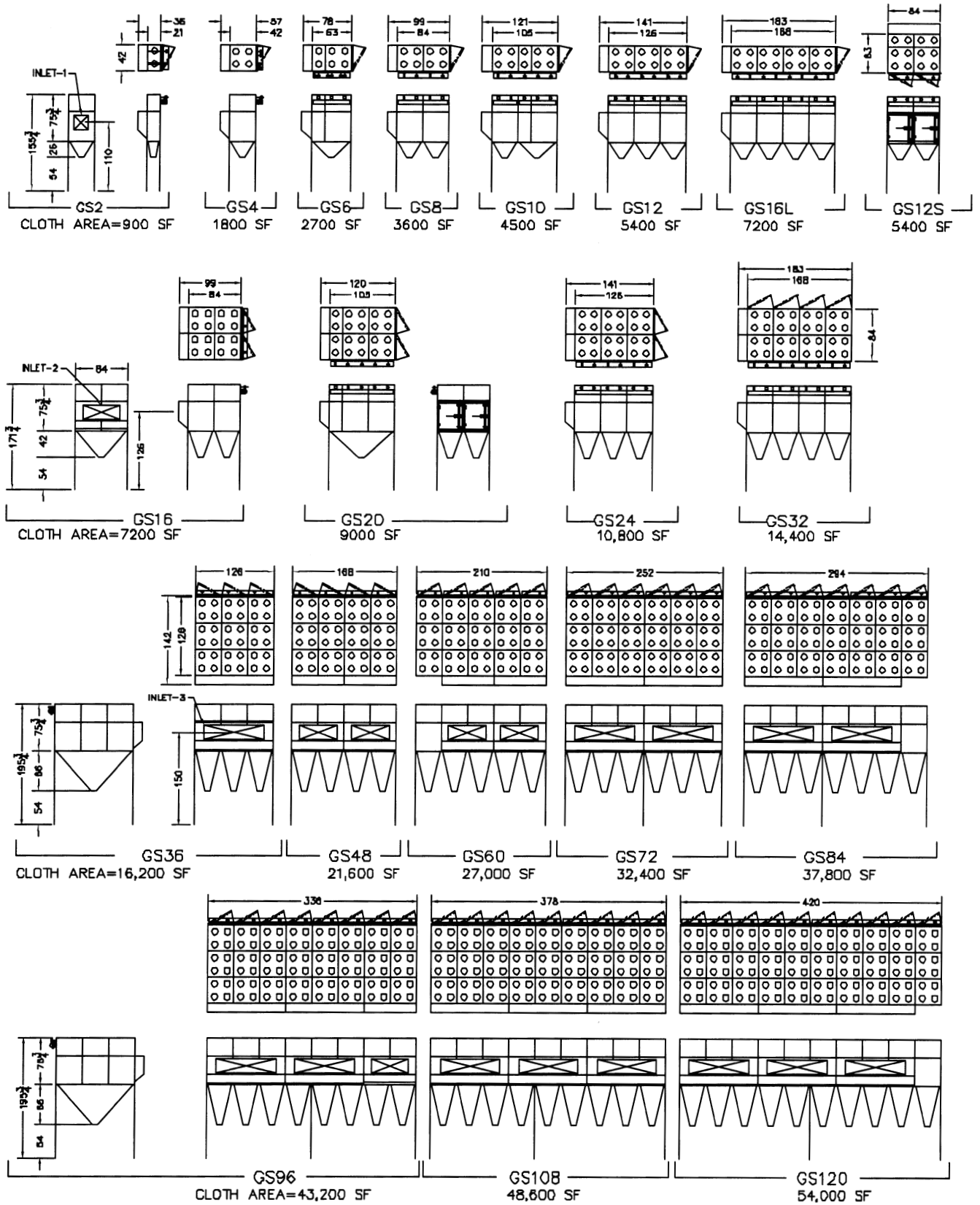
Gold Series models

MODEL # CODE

GS 24

└─ # of Cartridges

└─ Gold Series



Large single point discharge hoppers available. Trough hoppers also available. Hoppers shown result in lowest possible head height.



A partial listing of Gold Series users

3M COMPANY
 AC HUMKO CORPORATION
 ACUSHNET RUBBER COMPANY, INC.
 AERO METALS, INC.
 AEROFIL TECHNOLOGY, INC.
 ALBAUGH, INC.
 ALLIED METALS
 AMADA AMERICA INC
 AMERICAN PRESS
 AMERICAN SUPERCONDUCTOR
 AMORIM INDUSTRIAL SOLUTIONS
 ANGLO GOLD
 ANHEUSER BUSCH
 APPLIED RESEARCH TECHNOLOGY
 AQUATICS INDUSTRIES, INC.
 ARCH CHEMICALS, INC.
 ASSOCIATED METAL WORKS
 ATLANTIC PACKAGING CORPORATION
 ATR WIRE & CABLE COMPANY, INC.
 AUTOMATION ENGINEERING & MFG.
 B & D ROLLERS
 BAY CORRUGATED CONTAINER, INC.
 BENJAMIN MOORE & COMPANY
 F GOODRICH AEROSPACE/ROHR IND
 BINDAGRAPHS
 BLASTEC, INC.
 BROOMFIELD SHEET METAL, INC.
 BRUNNQUELL IRON WORKS
 BUCKEYE FIRE EQUIPMENT CO.
 BURKART FOAM, INC.
 C & D TECHNOLOGIES, INC.
 C O HILER INC.
 CABRILLO CABINETS
 CAMERON CHEMICALS, INC.
 CARWILE MECHANICAL CONTRACTORS
 CAST-RITE STEEL CASTING CORP.
 C-E MINERALS
 CENTRAL RUBBER COMPANY
 CERAMATEC
 CLARIDGE PROD. & EQUIPMENT
 CLASS GLASS & PERFORMANCE
 COLUMBUS WOOD PRODUCTS
 COMMONWEALTH INDUSTRIES
 CONSAIR ENGINEERING, INC.
 CONTINENTAL ALUMINUM
 COROPLAST, INC.
 CREAMLAND DAIRY
 CROSBIE FOUNDRY
 CROSSVILLE CERAMICS
 CRUISER YACHTS
 CULLIGAN INTERNATIONAL COMPANY
 CUSTOM ALLOY
 DAL-TILE INTERNATIONAL

DIXIE WOODWORKING
 E.M. INDUSTRIES, INC.
 EFTEC AMERICA
 ELITE MANUFACTURING CORP.
 ELTEC GATES, INC.
 ENCOMPASS
 ENDICOTT CLAY PRODUCTS
 ENNIS AGRI-TECH, INC.
 EXPERIAN
 FEDERAL - MOGUL
 FIDELITY INVESTMENTS
 FLAME SPRAY, INC.
 FT. WAYNE FOUNDRY
 G.E. DOVER LIGHTING
 GARCO BUILDING SYSTEMS
 GATEWAY COMPANY INC.
 GAYSTON CORPORATION
 GENERAL CASTINGS
 GENERAL ELECTRIC
 GENERAL SHALE CORPORATION
 GENTEX CORPORATION
 GM POWERTRAIN DIVISION
 GRANUTECH-SATURN SYSTEMS CORP.
 GRAPHIC CONTROLS
 GREENE, TWEED & COMPANY
 GTE CONSOLIDATED
 GTS DURATEK - MEMPHIS
 HALL SHEET METAL WORKS, INC.
 HARDFACE ALLOY, INC.
 HILL-ROM COMPANY
 HOFFMAN AIR & FILTRATION
 HOFMANN INDUSTRIAL, INC.
 HOOVEN DAYTON CORPORATION
 HUFFMAN METAL WORKS, INC.
 HUNTER DOUGLAS
 IKG INDUSTRIES, INC.
 IMPERIAL METAL FINISHING, INC.
 INDIANA LIMESTONE COMPANY, INC
 INGREDIENT MASTERS C/O
 INTELLIPAK, LTD.
 INTERNATIONAL SPECIALTY ALLOYS
 ISPAT INLAND, INC.
 J.O. MORY INC.
 J-STAR CONSOLIDATED
 KERR PRINTING
 KEYSTONE COATING
 KIMBERLY-CLARK CORP.
 KIRK & BLUM MANUFACTURING CO.
 KOUNTRY KRAFT KITCHENS
 LAMKIN CORPORATION
 LANGE-STEGMANN
 LASCO BATHWARE DIV
 LEMFORDER CORPORATION

LENOX CHINA
 LEVIN-RICHMOND TERMINAL CORP.
 LILLY INDUSTRIES
 LITHO-KROME COMPANY
 LOZIER CORPORATION/WEST PLANT
 LUWA BAHNSON, INC.
 MAAX HYDROSWIRL
 MAYTAG CLEVELAND COOKING PROD.
 MEAD PRODUCTS
 MERCEDES BENZ
 MIDWEST GRAIN PRODUCTS
 MODERN DIE WELDING INC.
 MOELLER MARINE PRODUCTS
 MOORE DIVERSIFIED PRODUCTS
 MORGAN METALS
 MOTOMAN, INC.
 NATIONAL BY-PRODUCTS
 NATIONAL COMPUTER PRINT, INC.
 NIBCO CORP
 NIRO INC.
 NORTH AMERICAN STEEL
 NORTH EL PASO BRICK
 NORTHRUP GRUMMAN
 OGLEBAY NORTON SPECIALTY MNLS.
 OHIO BLOW PIPE COMPANY
 OILFIELD ELECTRIC MARINE
 OLIN BRASS
 PACIFIC CLAY PRODUCTS
 PACKAGING UNLIMITED
 PAMARCO
 PARKER/CHROMERICS
 PHARMLIN INCORPORATED
 PHELPS DODGE MINING COMPANY
 PHOENIX METAL WORKS, INC
 PLASKOLITE, INC.
 POLLUTION CONTROL INDUSTRIES
 PPG INDUSTRIES OHIO, INC.
 PRAXAIR SURFACE TECHNOLOGIES
 PRECISION COATINGS INC.
 PRECISION METAL WORKS
 PRECISION PRESS
 PRESTO PRODUCTS
 PURINA MILLS, INC.
 QUAD GRAPHICS
 QUAKER COLOR
 QUAKER FABRICS CORP.
 QUANTUM METALS
 REYNOLDS METAL COMPANY
 RIVER CEMENT COMPANY
 ROCK VALLEY COLLEGE
 ROCKY MOUNTAIN MONUMENT
 RUSSEL METALS / BACHALL GROUP
 RUSSELL-FIELD PAPER CO.

S. ROSENTHAL COMPANY
 S.A.F.E. SYSTEMS, INC.
 SAINT-GOBAIN INDUST. CERAMICS
 SANDBLASTERS, INC.
 SCHWEITZER-MAUDUIT
 SHEFFIELD PLATERS, INC.
 SHELBY STEEL
 SIFCO MECHANICAL
 SIGNATURE BRANDS
 SLOSS INDUSTRIES ARICHEM
 SOLAR TURBINE
 SORBILITE, INC.
 STANDLEY BATCH SYSTEMS, INC.
 STANDRIDGE COLOR
 STAR CORRUGATED BOX CO., INC.
 STEEL FAB, INC.
 STEEL SERVICE CORP.
 SUMMIT STEEL FABRICATORS
 SUPERIOR SYSTEMS INC.
 SURFACE AUTOMATION SYSTEMS,LLC
 TAYLOR-POHLMAN, INC.
 TEKNOR APEX
 TENNANT COMPANY
 THERMAL PROCESSING SOLUTIONS
 THERMOGAS
 TIMBER PRODUCTS
 TRANE COMPANY
 TRANSWHEEL CORPORATION
 TRIPLE CROWN
 TRUTEC INDUSTRIES, INC.
 U.S. BRONZE POWDERS, INC.
 U.S. TONER & COPIERS
 ULTRA FAB
 UNICOR - FEDERAL PRISON INDUST
 UNITED STATES GYPSUM COMPANY
 UNIVERSAL AUTO OF VIRGINIA INC
 UNIVERSAL NUTRITIONAL SYSTEMS
 UNIVERSITY OF CHICAGO
 UNIVERSITY OF MASSACHUSETTS
 VALGRA INDUSTRIES, INC.
 WALL COLMONOY CORPORATION
 WARRIOR SYSTEMS, INC.
 WESTERN PNEUMATICS, INC.
 WEYERHAUSER CORPORATION
 WILLAMETTE INDUSTRIES

www.camfilfarr.com/apc

Camfil Farr - Air Pollution Control - Jonesboro, AR

3501 Airport Rd. • Jonesboro, AR 72401 • 870-933-8048 • Fax: 870-933-8380

www.camfilfarr.com/apc • e-mail: filterman@camfilfarr.com • Toll Free 800-479-6801 • Toll Free Fax: 800-222-6891

Sales and Manufacturing Locations

Camfil AB

Industrigatan 3
SE-619 33 TROSA, Sweden
Tel: 46 156 536 00
Fax: 46 156 167 24

Camfil Farr

3501 Airport Road
Jonesboro, AR 72401
Tel: (870) 933-8048
Fax: (870) 933-8380

Camfil Farr

2785 Ave. Francis-Hughes
Laval, Quebec, Canada H7L 3J6
Tel: (450) 629-3030
Fax: (450) 662-6035

Camfil Farr

272 Kings Road, Tyseley
Birmingham, England B112AB
Tel: (011) 44121-707-8211
Fax: (011) 44121-706-9986

North American Manufacturing Locations

Jonesboro, Arkansas • Laval, Quebec • Corcoran, California • Delano, California • Crystal Lake, Illinois
Holly Springs, Mississippi • Riverdale, New Jersey • Conover, North Carolina • Washington, North Carolina • Concord, Ontario

World Wide Manufacturing Locations

France • Germany • Ireland • Malaysia • Sweden • Switzerland • United Kingdom

