

Golf/Vento

Current Flow Diagram

No. 4 / 1

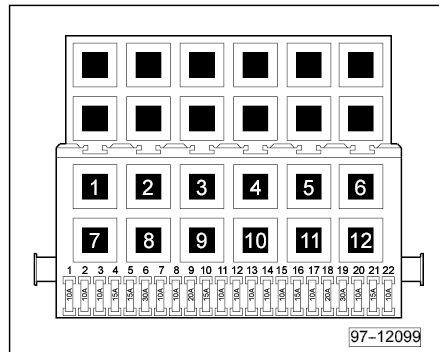
Edition 07.1997

2.8 ltr./128 kW Motronic, engine code AAA, 2.9 ltr./140 kW Motronic, engine code ABV

From August 1995

2.8 ltr./128 kW Motronic, engine code AAA, from August 1995**Relay locations:**

For relay locations and multi-pin connector wiring, see section "Fitting locations section"



12 - Fuel pump relay (167)

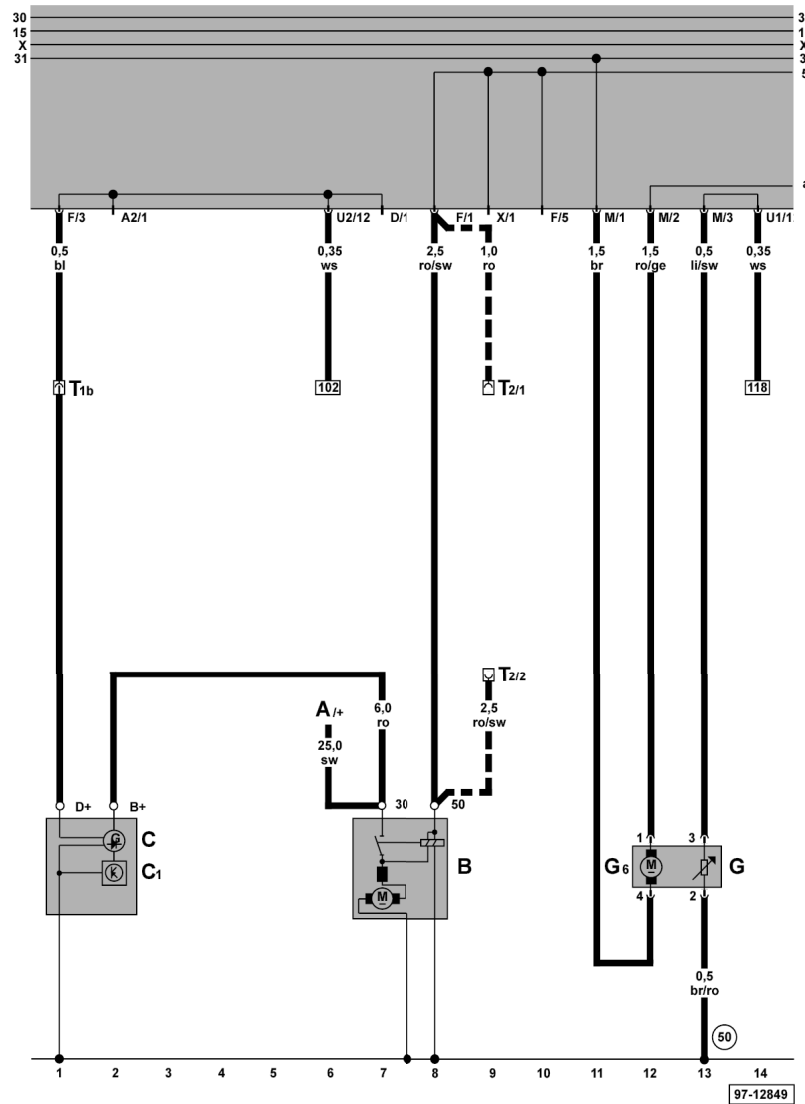
**Notes:***The number in brackets behind the part designation denotes the control number on the housing.***Fuse colours**

- 30 A - green
- 25 A - white
- 20 A - yellow
- 15 A - blue
- 10 A - red

Golf/Vento

Current Flow Diagram

No. 4 / 2



Alternator, starter, fuel pump, fuel gauge

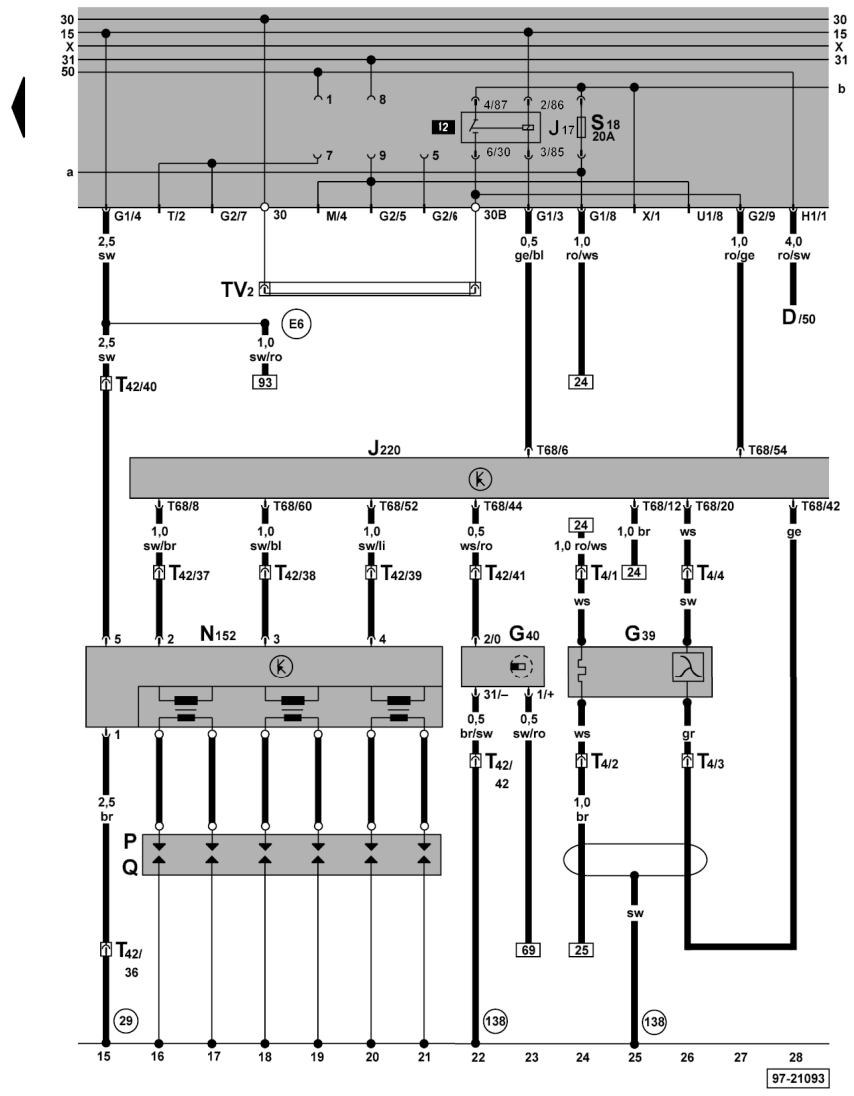
- A - Battery
- B - Starter
- C - Alternator
- C1 - Voltage regulator
- G - Fuel gauge sender
- G6 - Fuel pump (pre-supply pump)
- T1b - Single connector, near battery
- T2 - 2-pin connector, behind the relay plate
- 50 - Earth point, on left luggage compartment
- - Automatic gearbox only

- ws = white
- sw = black
- ro = red
- br = brown
- gn = green
- bl = blue
- gr = grey
- li = purple
- ge = yellow
- or = orange
- rs = pink

Golf/Vento

Current Flow Diagram

No. 4 / 3



Motronic control unit, ignition system, Lambda probe

- D - Ignition/starter switch
- G39 - Lambda probe
- G40 - Hall sender
- J17 - Fuel pump relay
- J220 - Motronic control unit, right in plenum chamber
- N152 - Ignition transformer
- P - Spark plug connector
- Q - Flame plug
- T4 - 4-pin connector, near intake manifold
- T42 - 42-pin connector, on engine
- T68 - 68-pin connector
- TV2 - Terminal 30 junction box, above the relay plate
- 29 - Earth point, near battery
- 138 - Earth connection (control unit), in Motronic wiring harness
- E6 - Positive connection -1- (15), in Motronic wiring harness

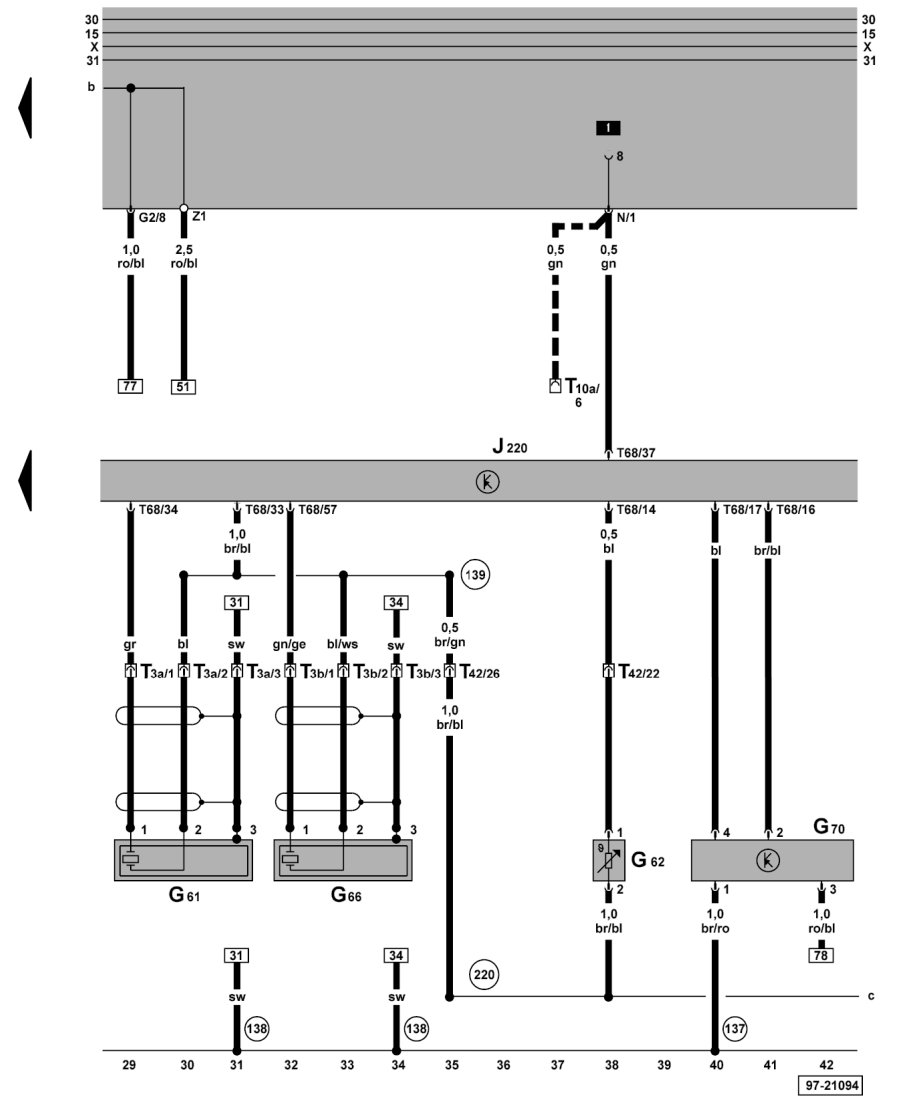


ws = white
 sw = black
 ro = red
 br = brown
 gn = green
 bl = blue
 gr = grey
 li = purple
 ge = yellow
 or = orange
 rs = pink

Golf/Vento

Current Flow Diagram

No. 4 / 4



Motronic control unit, knock sensors, throttle valve potentiometer, intake air temperature sender, air mass meter

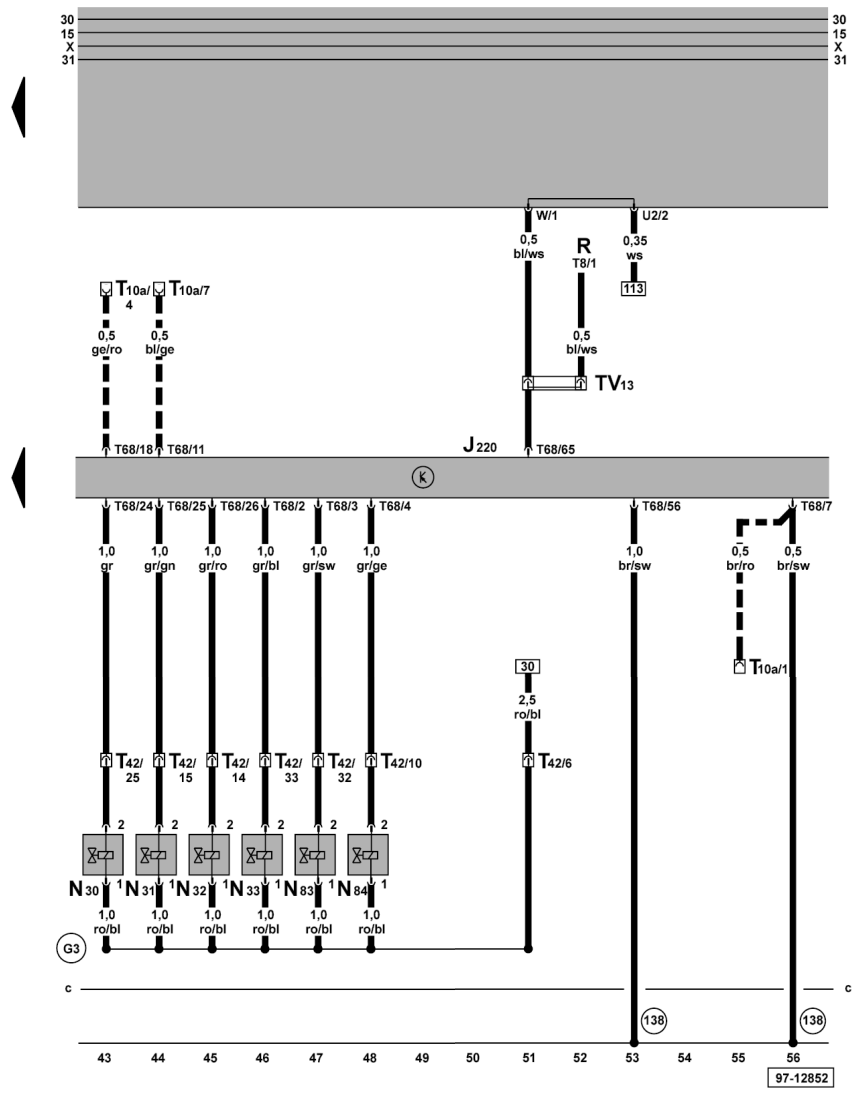
- G61 - Knock sensor I
- G62 - Coolant temperature sender
- G66 - Knock sensor II
- G70 - Air mass meter
- J220 - Motronic control unit, right in plenum chamber
- T3a - 3-pin connector, near cylinder head cover
- T3b - 3-pin connector, near cylinder head cover
- T10a - 10-pin connector, behind the relay plate
- T42 - 42-pin connector, on engine
- T68 - 68-pin connector
- 137 - Earth connection (end stage), in Motronic wiring harness
- 138 - Earth connection (control unit), in Motronic wiring harness
- 139 - Earth connection (sender earth), in Motronic wiring harness
- 220 - Earth connection (sender earth), in engine wiring harness
- - Automatic gearbox only

- ws = white
- sw = black
- ro = red
- br = brown
- gn = green
- bl = blue
- gr = grey
- li = purple
- ge = yellow
- or = orange
- rs = pink

Golf/Vento

Current Flow Diagram

No. 4 / 5



Motronic control unit, injectors

- J220 - Motronic control unit, right in plenum chamber
- N30 - Injector, cylinder 1
- N31 - Injector, cylinder 2
- N32 - Injector, cylinder 3
- N33 - Injector, cylinder 4
- N34 - Injectors series resistor
- N83 - Injector, cylinder 5
- N84 - Injector, cylinder 6
- R - Radio
- T8 - 8-pin connector, on radio
- T10a - 10-pin connector, behind the relay plate
- T42 - 42-pin connector, on engine
- T68 - 68-pin connector
- TV13 - Speed signal junction box, above the relay plate
- 138 - Earth connection (control unit), in Motronic wiring harness
- G3 - Positive (+) connection in cable sleeve - injectors
- - Automatic gearbox only

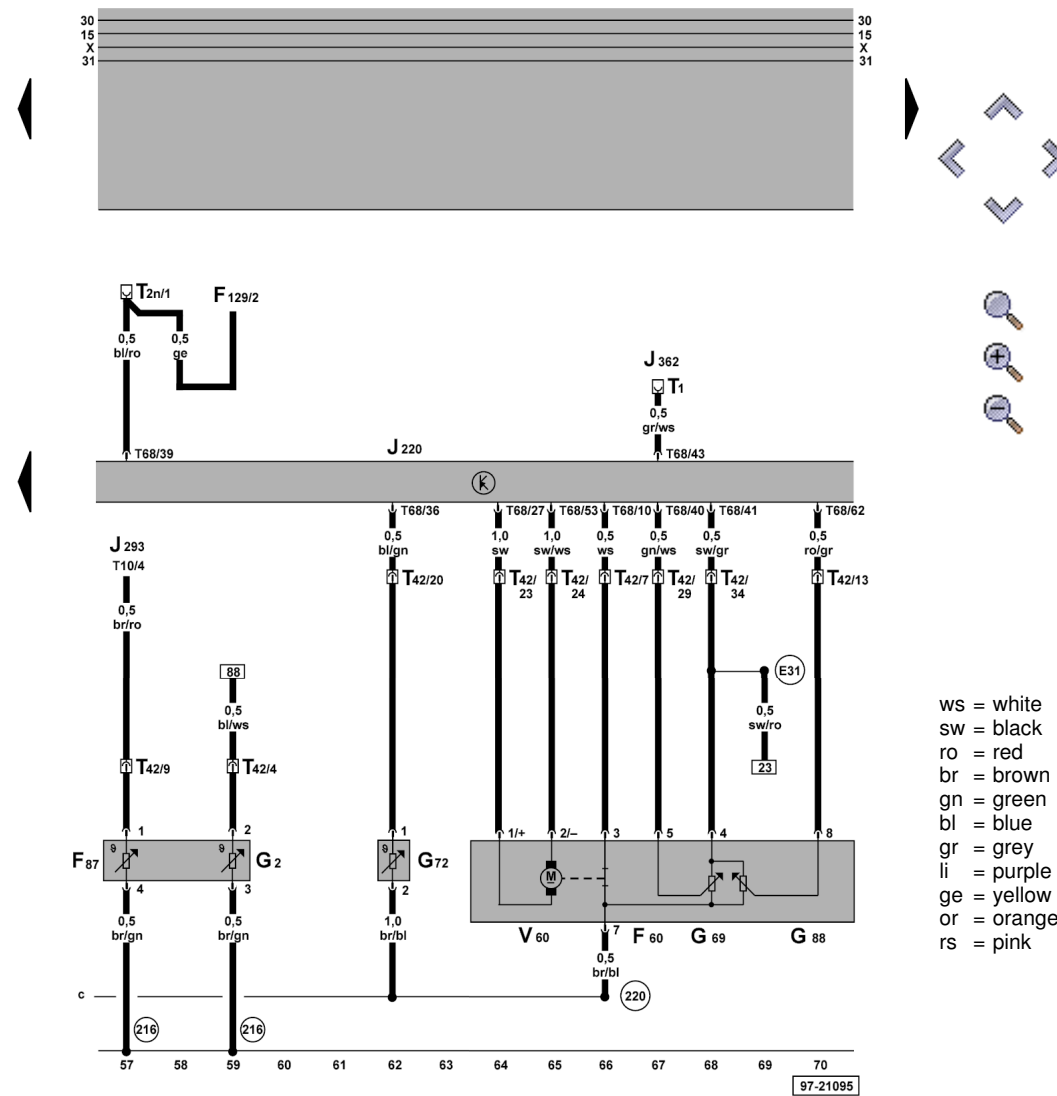


ws = white
 sw = black
 ro = red
 br = brown
 gn = green
 bl = blue
 gr = grey
 li = purple
 ge = yellow
 or = orange
 rs = pink

Golf/Vento

Current Flow Diagram

No. 4 / 6



Motronic control unit, coolant temperature gauge sender, coolant temperature sender, throttle valve control part

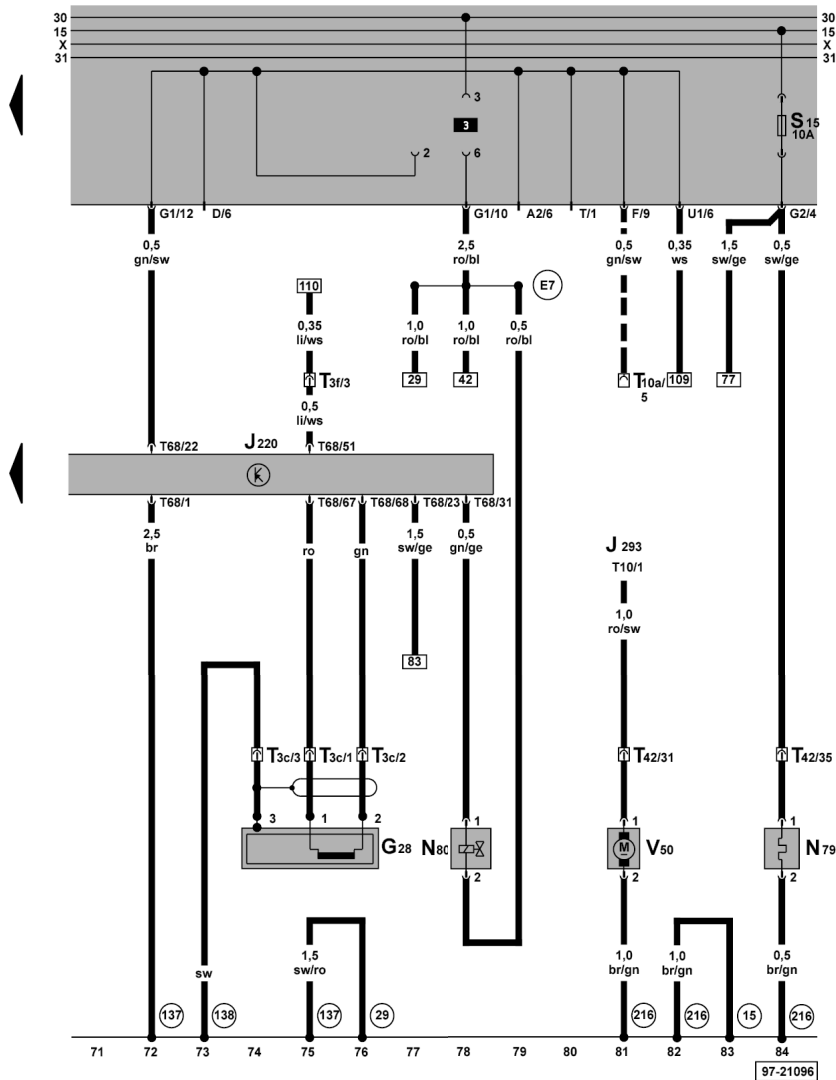
- F60 - Idling switch
- F87 - Fan run-on thermo-switch
- F129 - Air conditioner pressure switch
- G2 - Coolant temperature sender
- G69 - Throttle valve potentiometer
- G72 - Intake manifold temperature sender
- G88 - Throttle valve positioner potentiometer
- J220 - Motronic control unit, right in plenum chamber
- J293 - Radiator fan control unit, left in engine compartment
- J362 - Immobilizer control unit
- T1 - Single connector, behind the relay plate
- T2n - 2-pin connector, behind the relay plate
- T10 - 10-pin connector
- T42 - 42-pin connector, on engine
- T68 - 68-pin connector
- V60 - Throttle valve positioner
- 216 - Earth connection -2-, in Motronic wiring harness
- 220 - Earth connection (sender earth), in engine wiring harness
- E31 - Connection (15), in engine wiring harness

ws = white
 sw = black
 ro = red
 br = brown
 gn = green
 bl = blue
 gr = grey
 li = purple
 ge = yellow
 or = orange
 rs = pink

Golf/Vento

Current Flow Diagram

No. 4 / 7



Motronic control unit, engine speed sender, activated charcoal filter system solenoid valve, heater element crankcase breather, coolant circulation pump

- G28 - Engine speed sender
- J220 - Motronic control unit, right in plenum chamber
- J293 - Radiator fan control unit, left in engine compartment
- N79 - Heater element (crankcase breather)
- N80 - Activated charcoal filter system solenoid valve I, (pulsed)
- T3c - 3-pin connector, near starter
- T3f - 3-pin connector, behind the relay plate
- T10 - 10-pin connector
- T10a - 10-pin connector, behind the relay plate
- T42 - 42-pin connector, on engine
- T68 - 68-pin connector
- V50 - Coolant circulation pump
- 15 - Earth point, on cylinder head
- 29 - Earth point, near battery
- 137 - Earth connection (end stage), in Motronic wiring harness
- 138 - Earth connection (control unit), in Motronic wiring harness
- 216 - Earth connection -2-, in Motronic wiring harness
- E7 - Positive connection (87a), in Motronic wiring harness
- - Automatic gearbox only

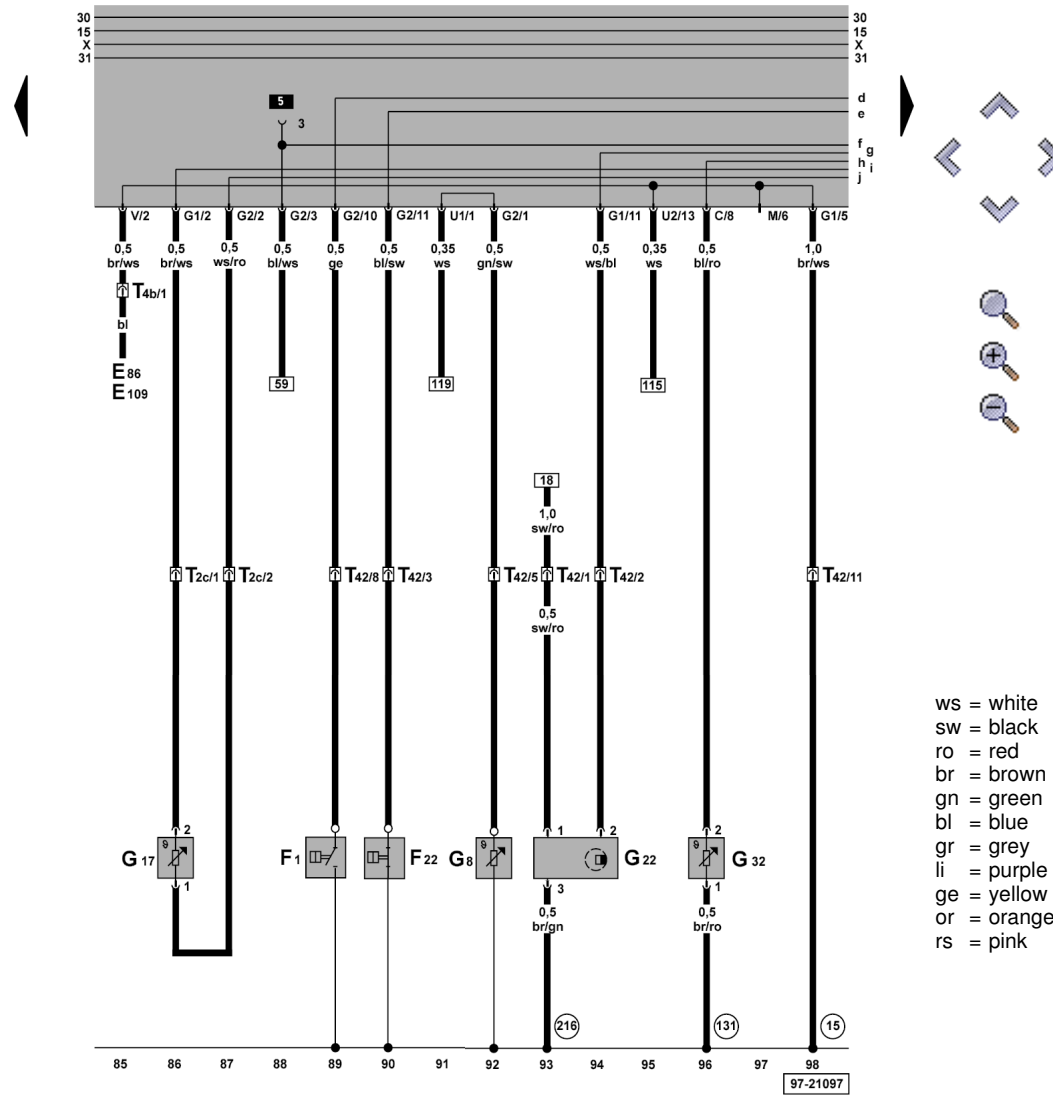
ws = white
 sw = black
 ro = red
 br = brown
 gn = green
 bl = blue
 gr = grey
 li = purple
 ge = yellow
 or = orange
 rs = pink

97-21096

Golf/Vento

Current Flow Diagram

No. 4 / 8



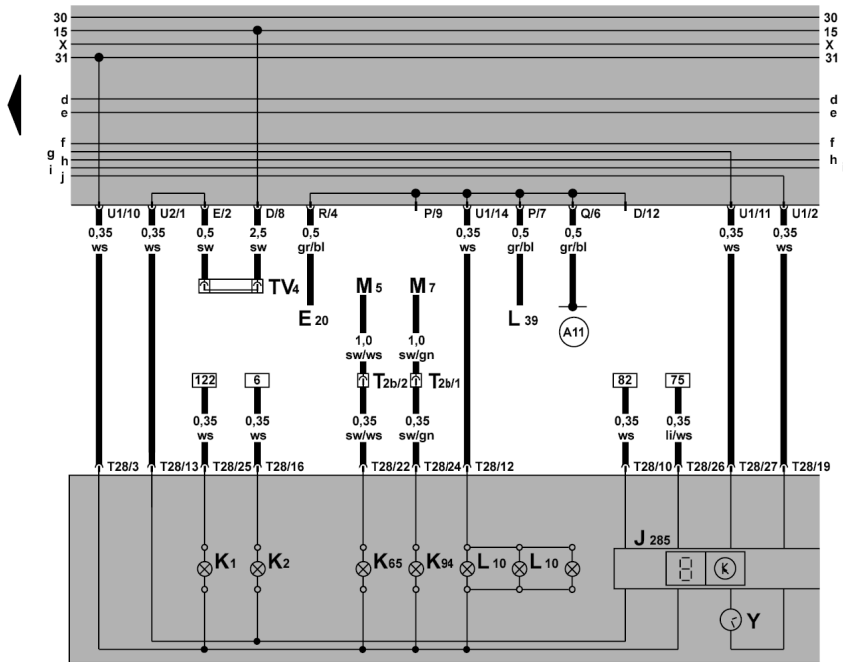
Oil pressure switch, speedometer sender, oil temperature sender, coolant shortage indicator sender

- E86 - Multi-function display call-up button
- E109 - Multi-function display, memory switch
- F1 - Oil pressure switch
- F22 - Oil pressure switch (0.3 bar)
- G8 - Oil temperature sender
- G17 - Ambient temperature sensor
- G22 - Speedometer sender (Hall sender on gearbox)
- G32 - Coolant shortage indicator sender
- T2c - 2-pin connector
- T4b - 4-pin connector, behind steering column switch trim
- T42 - 42-pin connector, on engine
- 15 - Earth point, on cylinder head
- 131 - Earth connection -2-, in engine compartment wiring harness
- 216 - Earth connection -2-, in Motronic wiring harness

Golf/Vento

Current Flow Diagram

No. 4 / 9



Dash panel insert, warning lamps

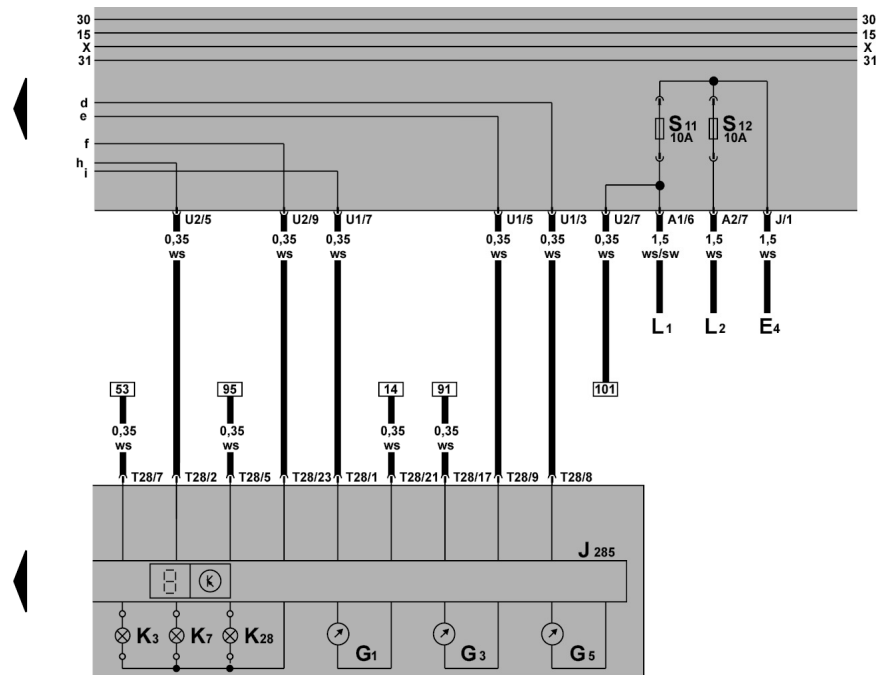
- E20 - Switches and instruments - lighting control
- J285 - Control unit with display in dash panel insert
- K1 - Main beam warning lamp
- K2 - Alternator warning lamp
- K65 - Left turn signal warning lamp
- K94 - Right turn signal warning lamp
- L10 - Dash panel insert light bulb
- L39 - Heated rear window switch bulb
- M5 - Turn signal bulb, front left
- M7 - Turn signal bulb, front right
- T2b - 2-pin connector, behind the relay plate
- T28 - 28-pin connector, on dash panel insert
- TV4 - Terminal 15 junction box, above the relay plate
- Y - Analogue clock
- A11 - Positive (+) connection (58b), in wiring harness for instruments

ws = white
 sw = black
 ro = red
 br = brown
 gn = green
 bl = blue
 gr = grey
 li = purple
 ge = yellow
 or = orange
 rs = pink

Golf/Vento

Current Flow Diagram

No. 4 / 10



Dash panel insert, warning lamps, fuel gauge, coolant temperature gauge, rev. counter

- E4 - Headlight dipper/flasher switch
- G1 - Fuel gauge
- G3 - Coolant temperature gauge
- G5 - Rev. counter
- J285 - Control unit with display in dash panel insert
- K3 - Oil pressure warning lamp
- K7 - Dual circuit brake/handbrake warning lamp
- K28 - Coolant temperature/coolant shortage warning lamp
- L1 - Twin filament bulb/sealed beam insert, left
- L2 - Twin filament bulb/sealed beam insert, right
- T28 - 28-pin connector, on dash panel insert

- ws = white
- sw = black
- ro = red
- br = brown
- gn = green
- bl = blue
- gr = grey
- li = purple
- ge = yellow
- or = orange
- rs = pink