

Good design

Date

1953

Publisher

The Museum of Modern Art

Exhibition URL

www.moma.org/calendar/exhibitions/1717

The Museum of Modern Art's exhibition history—from our founding in 1929 to the present—is available online. It includes exhibition catalogues, primary documents, installation views, and an index of participating artists.



**GOOD
DESIGN**

MoMA
542
c.2

GOOD DESIGN is a series of exhibitions of home furnishings, organized by the Museum of Modern Art, New York, for The Merchandise Mart, Chicago. The Museum has appointed Edgar Kaufmann, Jr., Director of the activity.

At the beginning of the program, Rene d'Harnoncourt, Director of the Museum, and Wallace O. Ollman, General Manager of The Mart, issued a joint statement:

"It is the first time an art museum and wholesale merchandising center have co-operated to present the best examples of modern design in home furnishings. Now, at the mid-point of the century, these two national institutions, whose very different careers began just 20 years ago, believe and hope that in combining their resources they will stimulate the appreciation and creation of the best design among manufacturers, designers and retailers for good living in the American home. Thus the attention of all America will be focused on the good things being created by the home furnishings industry."

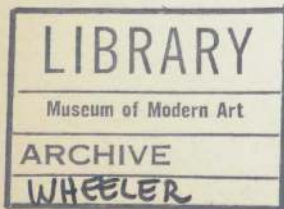
New items are selected for Good Design about six weeks before each main home furnishings market — Winter Market (early January) and Summer Market (mid-June). Full page announcements in important trade publications (and direct mail) solicit submissions for Good Design and give directions for submitting.

Selection Committees are appointed for each season by the Museum of Modern Art. They consist of one business man actively interested in art or design; one designer, craftsman or teacher; and the Director, who acts as permanent Committee Chairman. A majority vote of the Committee is final.

Basis of selection is: eye-appeal, function, construction and price, with emphasis on the first.

Items are selected from thousands sent by manufacturers and distributors and more requested by the Good Design research staff who shop wholesale and retail markets, scan trade and consumer publications.

continued inside back cover



- A—Furniture
- B—Floor Coverings
- C—Sheer Fabrics
- D—Drapery Fabrics
- E—Upholstery Fabrics
- F—Wall Coverings
- G—Lamps
- H—Accessories
- i—Tablewares
- J—Miscellaneous
- K—Kitchen and Cleaning
Equipment
- L—Household Appliances

SEPTEMBER - NOVEMBER 1953

The Museum of Modern Art, New York

MoMA 542

c. 2

In many cases, items that are handmade cannot be duplicated precisely. These items are designated by an asterisk

Item	Designer	Manufacturer or Distributor	Retailer Approximate price
FURNITURE			
A 1 Table—adjustable to 3 positions— black finish	Guy Baker, Jr.	Richards Morgenthau Co. 225 5th Ave. New York 10, N. Y.	B. Altman \$100
A 10 "Fold-A-Way" snack table—maple top—iron legs. 12" x 14" x 24"	Ernest Sohn	Ernest Sohn Creations 225 5th Ave. New York 10, N. Y.	Lord & Taylor \$6.25
A 11 Adjustable outdoor armchair—black metal with white plastic webbing	J. Cecil Witt	Troy Sunshade Co. Troy, Ohio	B. Altman Bloomingdale's \$27.95
A 12 Black metal folding chair—baked enamel on steel	J. Cecil Witt	Troy Sunshade Co.	B. Altman Bloomingdale's \$10.95
A 14 Lounge—white canvas on latex foam —iron rod base	Paul McCobb	B. G. Mesberg 201 E. 57th St. New York, N. Y.	Bloomingdale's \$149.50
A 15 Day bed—black canvas on latex foam—iron rod base	Paul McCobb	B. G. Mesberg	Bloomingdale's \$199.50
A 16 Conference table—walnut, oil finish #8-4 top, 96" x 42" #12 base, 61" x 24"	Jens Risom	Jens Risom Design 49 E. 53rd St. New York 22, N. Y.	Georg Jensen \$296
A 18 Walnut sideboard—84" x 17" x 36" to go with A 21	William Pahlmann	Grand Rapids Bookcase & Chair Co. Hastings, Michigan	W. & J. Sloane \$240
A 20 Walnut double chest 62" x 200" x 32"—10 drawers	William Pahlmann	Grand Rapids Bookcase & Chair Co.	W. & J. Sloane \$270
A 21 Mobile walnut dining table— 64" x 36" x 29". To go with A 18	William Pahlmann	Grand Rapids Bookcase & Chair Co.	W. & J. Sloane \$230
A 23 6-drawer rosewood chest 46 $\frac{9}{16}$ " x 23 $\frac{3}{8}$ "	George Nelson	Herman Miller Furniture Co. Zeeland, Mich.	Bloomingdale's Century Furniture Shops 55 E. 8th St. New York, N. Y.

Item	Designer	Manufacturer or Distributor	Retailer Approximate price
A 25 2 natural cane benches—black frame, metal legs, 18" x 48" x 14"	George Nelson	Herman Miller Zeeland, Mich.	Bloomington's Century Furniture Shops \$60 each
A 26 3-drawer rosewood chest— 33 $\frac{5}{8}$ " x 35 $\frac{1}{2}$ "	George Nelson	Herman Miller	Bloomington's Century Furniture Shops \$158
A 27 Armchair—natural mahogany and natural wicker	Nanna and Jorgen Ditzel	Dunbar Furniture Co. Berne, Ind.	Lord & Taylor \$225
A 29 Easy chair—walnut finish handprinted linen	Folke Ohlsson	Dux Co. 25 Taylor St. San Francisco 2, Calif.	Abraham & Strauss \$140
A 30 Ottoman—walnut finish	Folke Ohlsson	Dux Co.	Abraham & Strauss \$61
A 32 Bow side chair—black steel frame, white cord	Allan Gould	Allan Gould Designs 166 Lexington Ave. New York 16, N. Y.	Bloomington's W. & J. Sloane \$21.50
A 34 Occasional table—polished chrome legs, marble top, 31" diameter	Paul Mayen	Habitat Associates 837 Madison Ave. New York 21, N. Y.	Habitat Associates \$159
A 35 Armchair—white plastic coated wire and rod frame, black upholstery pad	Harry Bertoina	Knoll Associates 575 Madison Ave. New York 22, N. Y.	Abraham & Straus Bloomington's \$75
A 36 Side chair—black and white plastic coated wire and rod frame, pad seat	Harry Bertoina	Knoll Associates	Abraham & Straus Bloomington's \$30
A 37 Side chair—black plastic back, up- holstered seat, rod legs	Eero Saarinen	Knoll Associates	Abraham & Straus Bloomington's \$64.50 in muslin
A 39 Coffee table—chrome base plate glass top	Katavolos, Littell, Kelley	Laverne 160 E. 57th St. New York 22, N. Y.	Laverne 160 E. 57th St. New York 22, N. Y. \$245
A 40 Side chair—leather sling, 4 chrome legs, black enamel stretcher	Katavolos, Littell, Kelley	Laverne	Laverne \$195
A 41 Dining chair—leather sling, 3 chrome legs, black enamel stretcher	Katavolos, Littell, Kelley	Laverne	Laverne \$135
A 42 Cocktail table—chrome legs, traver- tine top	Katavolos, Littell, Kelley	Laverne	Laverne \$180

Item	Designer	Manufacturer or Distributor	Retailer Approximate price
A 43 Dining table—white Carrara marble on brass plated steel legs	Katavolos, Littell, Kelley	Laverne	Laverne \$380
A 45 Desk—black metal with chromium trim	Charles Eames	Herman Miller Zeeland, Mich.	Abraham & Straus W. & J. Sloane \$172.70
A 47 Armchair—rod legs, improved plastic shell, detachable black Naugahyde pad	Charles Eames	Herman Miller	Abraham & Strauss W. & J. Sloane \$62
A 48 Clothes rack, "Hang-it-All"	Charles Eames	Herman Miller	Mail order from The Playhouse 66 E. Walton Chicago, Ill. \$5.95 plus postage
A 51 Adjustable cocktail-dining table—hardwood veneer, hollow core construction, baked black iron legs	Tepper Meyer Associates	Fred Meyer of Calif. 1458 San Bruno Ave. San Francisco, Calif.	R. H. Macy

FLOOR COVERINGS

B 1 "Pacifica"—black and natural, 12' broadloom	Walter B. Guinan	Karastan Rug 295 5th Ave. New York 16, N. Y.	R. H. Macy \$14.95 sq. yd.
B 2 "Waipoint"—fiber E, viscose and acetate gray cocoa	Katherine Kinnane & John Gerald	Waite Carpet Co. Oshkosh, Wisc.	B. Altman Lord & Taylor \$14.95 sq. yd.
B 3 "Braid-Wai-California" fiber rug—multicolor 6' x 9'	Katherine Kinnane & John Gerald	Waite Carpet Co.	B. Altman Lord & Taylor \$18.95

SHEER FABRICS

C 1 White nylon fishnet 1" squares—144" wide		Arundell Clarke 25 E. 73rd St. New York 21, N. Y.	Decorators and architects \$4.50 per yd.
C 2 Chromespun acetate marquisette 52" wide white yellow		Tennessee Eastman Co. Kingsport, Tenn.	Bloomingdale's
C 5 "Caracas"—linen and rayon natural		Moss Rose Mfg. Co. Allegheny & Hancock Sts. Philadelphia 33, Pa.	Decorators and architects \$3 per yd.

Item	Designer	Manufacturer or Distributor	Retailer Approximate price
C 6* Dark and white cotton, metallic, rayon wool	Marianne Strengell	Marianne Strengell Textiles Cranbrook Art Academy Bloomfield Hills, Mich.	Decorators and architects \$15 per yd.
C 7 Printed squares on striped rayon, "Central Park South," 50" wide	Ruth Adler	Adler-Schnee Associates 7403 Puritan Ave. Detroit 21, Mich.	Decorators and architects \$12 per yd.
C 10 Linen, 52" wide white yellow persimmon blue turquoise		Knoll Textiles 575 Madison Ave. New York 22, N. Y.	Abraham and Straus Bloomingdale's \$4.50 per yd.
C 11 "Striped Linen," natural and white, 52" wide	Jack Lenor Larsen	Jack Lenor Larsen 60 E. 57th St. New York 22, N. Y.	Decorators and architects \$7.50 per yd.
C 13 Printed cotton batiste, "Tally," 50" wide	Angelo Testa	Angelo Testa & Co. 49 E. Ohio St. Chicago 11, Ill.	Decorators and architects \$6.50 per yd.
C 14 Printed cotton batiste, "Furrows," 50" wide	Angelo Testa	Angelo Testa & Co.	Decorators and architects \$6.50 per yd.

DRAPERY FABRICS

D 1 "Structures"—rayon and cotton—48" wide—yellow and gray on white	Ben Rose	Ben Rose 314 N. Michigan Ave. Chicago 1, Ill.	New Design 33 E. 75th New York, N. Y. \$5 per yd.
D 3 "1:30 A.M."—50" wide—blue on bleached linen	Pierre Kleykamp	L. Anton Maix 162 E. 59th St. New York, N. Y.	Ernst Schwadron 757 Madison Ave. New York 21, N. Y. \$9 per yd.
D 4 "1:30 A.M. Noir"—50" wide—black on natural linen	Pierre Kleykamp	L. Anton Maix	Ernst Schwadron \$9 per yd.
D 5 "1:30 A.M. Petit"—50" wide—black on bleached linen	Pierre Kleykamp	L. Anton Maix	Ernst Schwadron \$9 per yd.
D 9 "Raff" linen—multicolor 50" wide	Viola Grästen	Bonniers 605 Madison Ave. New York 22, N. Y.	Bonniers 605 Madison Ave. New York 22, N. Y. \$9 per yd.

Item	Designer	Manufacturer or Distributor	Retailer Approximate price
D 11 "Vicot" black cotton and viscose— 54" wide	Jack Lenor Larsen	Menlo Textiles Menlo Park, Calif.	Decorators and architects \$7 per yd.
D 12 "Vicot" cotton and viscose— 54" wide	Jack Lenor Larsen	Menlo Textiles	Decorators and architects \$7 per yd.
D 14 Washable linen, 37" wide yellow blue gray	Sten Hultberg	Dux Co. 25 Taylor St. San Francisco 2, Calif.	Century Furniture Shops 55 E. 8th St. New York, N. Y. \$6.00 per yd.
D 15 Turquoise and copper print on nat- ural Belgian linen, "Buttony," 50" wide	Elenor and Henry Kluck	Elenhank Designers 5715 E. Ada St. Chicago 36, Ill.	Decorators and architects \$8.75 per yd.
D 19 Pre-shrunk, bleached linen, "Mondrian white," 52" wide	Jack Lenor Larsen	Jack Lenor Larsen 60 E. 57th St. New York 22, N. Y.	Decorators and architects \$7.75 per yd.
D 23 Taffeta silk, "Sumatra" 50" wide	D. V. Jones	F. Schumacher & Co. 60 W. 40th St. New York 18, N. Y.	B. Altman \$15.75 per yd.
B 24 Printed textured linen, "Square Deal" 50" wide	Angelo Testa	F. Schumacher & Co.	B. Altman \$8.25 per yd.
D 34 Handwoven Siamese silk, black and white plaid, 40" wide	Tao Peng Sanani- korn	Thaibok Fabrics 3 E. 52nd St. New York 22, N. Y.	Thaibok Fabrics \$16.50 per yd.
D 35 Handwoven Siamese silk, multicolored plaid, 40" wide	Tao Peng Sanani- korn	Thaibok Fabrics	Thaibok Fabrics \$16.50 per yd.

UPHOLSTERY FABRICS

"Burmese"—mercerized cotton and viscose —54" wide:	Boris Kroll	Boris Kroll Fabrics 220 E. 51st St. New York 22, N. Y.	Bloomingdale's
E 2 tan on black—textured			\$8.40 per yd.
E 3 apricot on black—plain			\$7.95 per yd.
E 4 yellow on black—textured			\$8.40 per yd.
E 5 charcoal on black—textured			\$8.40 per yd.
E 6 white and black—plain			\$7.95 per yd.

Item	Designer	Manufacturer or Distributor	Retailer Approximate price
E 7 blue/green on black—textured	Boris Kroll	Boris Kroll Fabrics	\$8.40 per yd.
E 8 yellow on black—textured			\$8.40 per yd.
E 9 red on black—plain			\$7.95 per yd.
E 10 purple on black—plain			\$7.95 per yd.
E 11 blue/green-gold on black—textured			\$8.40 per yd.
E 12 white, black, tan, charcoal on black —striped			\$8.85 per yd.
E 13 tan on black—striped			\$8.85 per yd.
E 14 all black—plain			\$9.90 per yd.
E 17* Wool, cotton, acetate—42" wide— black and white	Marianne Strengell	Marianne Strengell Textiles Cranbrook Art Academy Bloomfield Hills, Mich.	Decorators and architects \$18 per yd.
E 19 "Gibraltar"—100% Saran—54" wide multicolor	Marianne Strengell	Jud Williams 55 E. 55th St. New York 22, N. Y.	Decorators and architects \$15 per yd.
E 20 "Double Triangles"—red on natural ground—48" wide	Alexander Girard	Herman Miller Furniture Co. Zeeland, Mich.	Abraham & Straus Bloomingdale's \$7 per yd.
E 28 Linen—"Courtrai," 52" wide blue-green black and white	Zelina C. Brunschwig	Brunschwig & Fils 509 Madison Ave. New York 22, N. Y.	Lord & Taylor \$8 per yd.
E 29 Cotton and jute "Addington Tweed" brown, black and tan, 50" wide	Henry W. Calvin	Henry Calvin Co. 414 Jackson St. San Francisco 11, Calif.	Decorators and architects \$11 per yd.
E 30 Cotton and jute "Blenheim Tweed" black and tan, 50" wide	Henry W. Calvin	Henry Calvin Co.	Decorators and architects \$9 per yd.
E 32 Mohair, cotton and rayon—"Nordic" natural and black, 54" wide	Earle Farnsworth	Goodall Fabrics Sanford, Maine	Decorators and architects \$7.50 per yd.
E 35 Linen—"New Damask" white and black, 52" wide	Jack Lenor Larsen	Jack Lenor Larsen 32 E. 22nd St. New York 10, N. Y.	Decorators and architects \$9.50 per yd.
E 36 Linen—"New Damask," 52" wide charcoal and black turquoise and black	Jack Lenor Larsen	Jack Lenor Larsen	Decorators and architects \$10.75 per yd.

Item	Designer	Manufacturer or Distributor	Retailer Approximate price
E 42 Avisco and cotton black and white, 54" wide	Isabel Scott	Isabel Scott Fabrics Corp. 17 E. 53rd St. New York 22, N. Y.	Decorators and architects \$8.95 per yd.
E 43 Avisco and cotton blue and black, 54" wide	Isabel Scott	Isabel Scott Fabrics Corp.	Decorators and architects \$8.95 per yd.
E 44 Wool—"Cubism" gray and black, 50" wide	Agnete Gjordvod	George Tanier 521 Madison Ave. New York 22, N. Y.	Euster Associates 104 E. 28th St. New York, N. Y. \$14.50 per yd.

WALL COVERINGS

*Hand made Japanese silk papers:

F 6 butterflies	Takahashi Studio	Takahashi 1661 Post St. San Francisco 15, Calif.	Hanlan Associates 129 Macdougall St. New York 12, N. Y. \$5.00 sheet
F 7 maple leaves			Hanlan Associates \$1.25 sheet
F 8 bamboo leaves			Hanlan Associates \$1.25 sheet
F 9 ginkgo leaves			Hanlan Associates \$1.25 sheet
F 11 "Facets" charcoal on white orange on white	Alexander Girard	Herman Miller Furniture Co. Zeeland, Mich	Abraham & Straus Bloomingdale's \$4.50 per roll 30" wide
F 12 "Pepitas" ochre on gray magenta on light gray	Alexander Girard	Herman Miller	Abraham & Straus Bloomingdale's \$4.50 per roll
F 13 "Lines" orange on ochre sepia on white	Alexander Girard	Herman Miller	Abraham & Straus Bloomingdale's \$4.50 per roll

LAMPS

G 2 Ceiling lamp—white opal glass, polished brass tips	Paul Mayen	Habitat Associates 837 Madison Ave. New York 21, N. Y.	Habitat Associates 837 Madison Ave. New York 21, N. Y. \$21
---	------------	--	--

Item	Designer	Manufacturer or Distributor	Retailer Approximate price
G 3 Ceiling lamp—laminated white shade, baked white enamel on steel frame	Paul Mayen	Habitat Associates	Habitat Associates \$27
G 5 Table lamp—lacquer on steel white black	Harry Gitlin	Stamford 429 W. Broadway New York 12, N. Y.	Hansen 978 First Ave. New York, N. Y. \$8

ACCESSORIES

H 1 3 silver cigarette dishes	Allan Adler	Allan Adler 8626 Sunset Blvd. Hollywood 46, Calif.	Black, Starr & Gorham \$10, \$15, \$20 plus tax
H 2 Ashtrays (3) white, green, brown stoneware 3½" diameter	Bruce Anderson	Bruce Anderson 337 Golf Club Dr. Santa Cruz, Calif.	America House, 32 E. 52nd St. New York 22, N. Y. Mayhew \$1 each
H 4 Ashtrays (3) white, green, brown stoneware 9½" diameter	Bruce Anderson	Bruce Anderson	America House Mayhew 603 Madison Ave. New York 21, N. Y. \$6 each
H 5 Seguso iridescent glass pitcher 11½" high—crystal	Flavio Poli	Bonniers 605 Madison Ave. New York 22, N. Y.	Bonniers 605 Madison Ave New York 22, N. Y. \$20
H 6 Cigarette box black oxidized metal and brass	Paul Hagenauer	Bonniers	Bonniers \$18
H 7* Stoneware vase—matte slate colored glaze	Carl Harry Stålhane	Bonniers	Bonniers \$22
H 8* Stoneware vase—matte slate colored glaze	Carl Harry Stålhane	Bonniers	Bonniers \$34
H 9* Stoneware vase—matte white glaze	Carl Harry Stålhane	Bonniers	Bonniers \$45
H 10* Pottery vase, small unglazed outside, glazed inside	Greta Moller	Bonniers	Bonniers \$8.50
H 11* Pottery vase, large unglazed outside, glazed inside	Greta Moller	Bonniers	Bonniers \$19

Item	Designer	Manufacturer or Distributor	Retailer Approximate price
H 12 Ash tray—mottled blue glazed pottery—4¾" sq., ¾" deep	Ejo	Bonniers	Bonniers \$4
H 13 Platter—15" white baked enamel on aluminum black insert	Ernst Lichtblau	Joseph Franken 200 E. 63rd St. New York 21, N. Y.	Georg Jensen 667 5th Ave. New York 22, N. Y. \$8.50
H 14 Platter 15" polished brass	Ernst Lichtblau	Joseph Franken	Georg Jensen \$22.50
H 17 Perforated metal bowls black baked enamel on steel 8" 12" 15"	Gross and Esther Wood	Gross Wood & Co. 230 Natoma St. San Francisco 3, Calif.	Decorators & architects \$2, \$3, \$4
H 18 Glass vase tall, hand blown, smoke color	Richard Sussmuth	Georg Jensen	Georg Jensen \$9.50
H 20 Mahogany bowl—natural finish	William P. Frost	Georg Jensen	Georg Jensen \$16
H 21 Large teak bowl—oil finish	Finn Juhl	Georg Jensen	Georg Jensen \$67
H 22 Small teak bowl—oil finish	Kay Bojesen	Georg Jensen	Georg Jensen \$19
H 23 Oval bowl—red enamel on copper	Leona Whiteman	Georg Jensen	George Jensen \$14
H 24 Porcelain mugs wine cup old fashioned tumbler double old fashioned	Luke and Rolland Lietzke	Lietzke Porcelains Saxe Road Mogadore, Ohio	New Design 33 E. 75th St. New York 21, N. Y. \$1, \$2, \$3
H 27 Flower pot with saucer, 6" high partly glazed in brown	Hal Riegger	Miltonvale Potteries, Inc. Miltonvale, Kans.	The Pottery Barn 150 10th Ave. New York, N. Y. \$2.85
H 29 10" round bowl abaca cloth in plastic	Fred R. Snyder and Edna R. Cox	Santa Monica Products Co. Santa Monica, Calif.	Bloomington's \$10
H 30 Large tray—15" x 21½" abaca cloth in plastic	Fred R. Snyder and Edna R. Cox	Santa Monica Products Co.	B. Altman \$18
H 32* Bowls brown black	Japanese folk potters	Takahashi 1661 Post St. San Francisco 15, Calif.	\$2 each

Item	Designer	Manufacturer or Distributor	Retailer Approximate price
H 33 Hardwood bowls with lids one light—one dark	Japanese folk woodworkers	Takahashi	\$3.95 each
H 34* Deep bowl—5¼" brown, black glaze on stoneware	Japanese folk potters	Takahashi	\$2
H 35* Deep bowl with spout brown glaze on stoneware	Japanese folk potters	Takahashi	Architects & decorators \$5
H 36 Bowl—12" baked enamel on spun aluminum	Florence Thomas	Florence Thomas 33 E. Union St. Pasadena, Calif.	R. H. Macy \$4.50
H 38* "Unica"—Leerdam vase clear glass, small neck, white mark- ings	Maydam	A. J. Van Dugteren	Black, Starr & Gorham Bonniers \$60
H 42* Casserole—hand thrown— black and white stoneware	Lucy Rie	Georg Jensen	Georg Jensen \$25.50 each
H 43 Covered jars (2)—glass 8½" high 10¼" high	Winslow Anderson	Blenko Glass Co. Milton, W. Va.	Abraham & Straus Bloomingdale's \$4.50, \$5
H 44 Ceramic bottle—"white ruff decoy"	James Solomon	Richards Morgenthau Co. 225 5th Ave. New York, N. Y.	Georg Jensen 667 5th Ave. New York 22, N. Y. \$20
H 45 Ceramic bottle—"Sandpiper #1"	Kenji Fujita	Richards Morgenthau	Georg Jensen \$15
H 46 White candle—4¼" dia.	Helen Pope	Avant 6314 San Bonita Blvd. St. Louis, Mo.	Abraham & Straus Penthouse Galleries 15 W. 55th St. New York, N. Y. \$1.30 each
H 47 Black candle—12" dia.	Helen Pope	Avant	Abraham & Straus Penthouse Galleries \$4.45 each
H 48 Open spiral basket — willow and reed, 12" dia. x 5" deep	L. Hansen	Basket Bazaar 133 W. 3rd St. New York 12, N. Y.	Basket Bazaar 133 W. 3rd St. New York 12, N. Y. \$5
H 49 Heavy crystal vase—9" high	Strombergshyttan	R. F. Brodegaard & Co. 225 Fifth Ave. New York 10, N. Y.	Georg Jensen \$35

Item	Designer	Manufacturer or Distributor	Retailer Approximate price
H 50 Heavy triangular vase— Swedish crystal, 7" high	Strombergshyttan	R. F. Brodegaard & Co.	Bonniers \$18
H 51 Heavy crystal vase—6½" high	Strombergshyttan	R. F. Brodegaard & Co.	Georg Jensen \$15
H 54 Thermos ice bowl and cover polished brass	Tommi Parzinger	Dorlyn Silversmiths 223 Wooster St. New York 12, N. Y.	Hammacher Schlemmer & Co. W. & J Sloane \$40
H 55 Orrefors Cocktail shaker		Fisher, Bruce & Co. 219 Market St. Philadelphia 6, Pa.	Georg Jensen \$25
H 57 Flask—green glass and natural raffia, 14½" high	Martin Freeman	Martin Freeman Co. 225 Fifth Ave. New York 10, N. Y.	W. & J. Sloane \$5.50
H 58 Flask—green glass and natural raffia, 12" high	Martin Freeman	Martin Freeman Co.	W. & J. Sloane \$4.50
H 60 Black stoneware bowl— 8½" dia.	Glidden Parker and Fong Chow	Glidden Pottery Alfred, N. Y.	B. Altman \$2.80
H 61 Black stoneware bowl— 6" dia.	Glidden Parker and Fong Chow	Glidden Pottery	B. Altman \$1
H 62 Black stoneware bowl— 4¾" dia.	Glidden Parker and Fong Chow	Glidden Pottery	B. Altman \$1
H 63 Black and white stoneware flower bowl—6" sq.	Glidden Parker	Glidden Pottery	B. Altman \$2.50
H 64 Candle holders—black iron, 6½" high	Gross and Esther Wood	Gross Wood & Co. 230 Natoma St. San Francisco 3, Calif.	Decorators & architects \$1 each
H 71 Glass plate—striped in white, 10½" dia.	Venini	Frederik Lunning, Inc. 667 Fifth Ave. New York 22, N. Y.	Georg Jensen \$22
H 72 Wax candles—Japan, 9" high red white	Japanese handcraft	Ivo Meucci Associates 620 N. Michigan Ave. Chicago 11, Ill.	Decorators & architects \$2.60 each
H 74 Candle holders—white Chinese porcelain		Modes of the Moment 471 N. Robertson Blvd. Los Angeles 48, Calif.	\$15 pair

Item	Designer	Manufacturer or Distributor	Retailer Approximate price
H 75 Cigarette box—black cast iron with solid brass lid	Karl Kleinberg	Modern California 527 W. 17th St. Los Angeles 14, Calif.	\$5
H 76 Oval bowl—hand carved black mahogany, 10" x 16"	Chester Pfeiffer	Joseph Pelkey 694A Eastern Parkway Brooklyn 13, N. Y.	Bloomingdale's \$22.50
H 77 Jar with cover—vitrified china white gray	Mary Winans	The Max Schonfeld Co. 663 N. La Cienega Los Angeles 46, Calif.	Abercrombie & Fitch B. Altman \$5
H 81 Bowl—polished aluminum alloy	Richard K. Thomas	Winkler Mill Craftsmen, Inc. Box 64B, R.F.D. #1 Santa Fe, New Mexico	Georg Jensen \$9.50
H 82 Square plate—polished aluminum alloy, 8"	Richard K. Thomas	Winkler Mill Craftsmen	Georg Jensen \$13
H 83 Square plate—polished aluminum alloy, 10"	Richard K. Thomas	Winkler Mill Craftsmen	Georg Jensen \$15
H 84 Waste Basket black expanded metal	Gross and Esther Wood	Gross Wood & Co. 230 Natoma St. San Francisco 3, Cal.	Decorators & architects \$5

TABLEWARES

i 1 Covered bowl glazed pottery	Greta Moller	Bonniers 605 Madison Ave. New York 22, N. Y.	Bonniers 605 Madison Ave. New York 22, N. Y. \$30
i 3 Salad serving set—2 pcs 11"—dull ebony		Bonniers	Bonniers \$5 pair
i 4 Relish set—6" Danish polished horn	Peter Husted	Bonniers	Bonniers \$1.75 pair
i 5 Sauce spoon—7" Danish polished horn	Peter Husted	Bonniers	Bonniers \$2.25
i 6 Serving spoon—8½" Danish polished horn	Peter Husted	Bonniers	Bonniers \$1.75
i 7 Salad set—10" Danish polished horn	Peter Husted	Bonniers	Bonniers \$4.50 pair
i 8 Long salad set—12" Danish polished horn	Peter Husted	Bonniers	Bonniers \$5 pair

Item	Designer	Manufacturer or Distributor	Retailer Approximate price
i 13 Tablecloth (54" x 72") and napkin (15" x 15") brown and white cotton, hand fringed	Everett E. Sherwin	Garden States Prints Mfg. Corp. 200 Madison Ave. New York 16, N. Y.	Lord & Taylor \$5.98 & \$.60
i 14 Tablecloth (54" x 74") and napkin (15" x 15") red and white cotton, hand fringed	Everett E. Sherwin	Garden States Prints	Lord & Taylor \$3.98 & \$.60
i 15 Place mat—handwoven red wool on natural linen	Swedish folk weavers	Elizabeth Hanna Imports 801 DeHaro St. San Francisco 9, Calif.	Penthouse Gallery 15 W. 55th St. New York, N. Y. \$15.30
i 16 Plate mat—handwoven multicolored wool on natural linen	Swedish folk weavers	Elizabeth Hanna Imports	Penthouse Gallery \$15.30
i 17 "American Modern" flatware—stain- less steel—satin finished—6 pcs.	Russel Wright	John Hull Cutlers Corp. Meriden, Conn.	Abraham & Straus R. H. Macy \$6.95 set
i 18 Tall pitcher—2½ qt. clear glass—hand blown	Richard Sussmuth	Georg Jensen 667 5th Ave. New York 22, N. Y.	Georg Jensen 667 5th Ave. New York 22, N. Y. \$8.50
i 19 Round-sided pitcher—2 qt. clear glass—hand blown	Richard Sussmuth	Georg Jensen	Georg Jensen \$7.25
i 20 Stemware—6 goblets—10 oz. clear glass—hand blown	Richard Sussmuth	Georg Jensen	Georg Jensen \$1.25 each
i 22 Stainless steel flatware: satin finished dinner knife dinner fork soup spoon salad fork teaspoon butter spreader tablespoon demitasse spoon gravy ladle mustard spoon iced-tea spoon sugar spoon cheese knife 2 pc. fish set small ladle vegetable spoon potato spoon	Gottlieb Hammesfahr	Frederick Lunning 667 5th Ave. New York 22, N. Y.	Georg Jensen \$3.00 \$1.40 \$1.30 \$1.25 \$1.20 \$2.50 \$1.50 \$1.00 \$5.50 \$1.15 \$1.75 \$2.50 \$2.00 \$4.00 \$9.50 \$5.00 \$4.75

Item	Designer	Manufacturer or Distributor	Retailer Approximate price
i 23 Chop plate—12"—coupe shape white porcelain	Herman Gretsch	H. E. Lauffer Co. 1123 Broadway New York 10, N. Y.	New Design 33 E. 75th St. New York 21, N. Y. Saks Fifth Avenue \$5.95
i 24 Low cup and saucer—white porce- lain—4" cup, 6" saucer	Herman Gretsch	H. E. Lauffer Co.	New Design Saks Fifth Avenue \$2.50 set
i 25 4 small ceramic cups—2¾" matte glazes—gray, black, green, brown	Jane and Gordon Martz	Marshall Studios Veedersburg, Ind.	Decorators & architects \$.80 each
i 26 6 ceramic tumblers black matte glaze—3¾"	Jane and Gordon Martz	Marshall Studios	Decorators & architects \$1.50 each
i 27 Small ceramic salt & pepper shakers matte glaze	Jane and Gordon Martz	Marshall Studios	Decorators & architects \$1.60 pair
i 28 Large ceramic salt & pepper shakers matte glaze	Jane and Gordon Martz	Marshall Studios	Decorators & architects \$2 pair
i 29 Ceramic sugar and cream set brown matte glaze	Jane and Gordon Martz	Marshall Studios	Decorators & architects \$6 pair
i 30 Ceramic pitcher brown matte glaze	Jane and Gordon Martz	Marshall Studios	Decorators & architects \$6.50
i 31 Large ceramic pitcher black matte glaze	Jane and Gordon Martz	Marshall Studios	Decorators & architects \$12.50
i 32 Sugar and cream set gunmetal glaze on earthenware	Oliver W. Greene	Peter Pots of Providence 14 Sheldon St. Natick, R. I.	Bloomingle's \$5
i 33 Decanter—gunmetal glaze on earthenware—copper tipped cork	Oliver W. Greene	Peter Pots of Providence	Bloomingle's \$9.50
i 34 Cock and hen cruets gunmetal glaze on earthenware	Elizabeth Boyd Greene	Peter Pots of Providence	Bloomingle's \$5 pair
i 35 Plate—6"—prism glass	Scott Wilson and Fritz Foord	Mary Ryan 225 5th Ave. New York 10, N. Y.	Georg Jensen \$10
i 36 Plate—8"—prism glass	Wilson & Foord	Mary Ryan	Georg Jensen \$10
i 37 Plate—10"—prism glass	Wilson & Foord	Mary Ryan	Georg Jensen \$10

Item	Designer	Manufacturer or Distributor	Retailer Approximate price
i 38 "Silhouette"—glassware iced tea, goblet, sherbet, juice amber smoke clear	Eva Zeisel	Sun Glo Studios 225 5th Ave. New York 10, N. Y.	B. Altman \$1 each
i 39 2 cups, 3¼"	Japanese folk potters	Takahashi 1661 Post St. San Francisco, Calif.	Decorators & architects \$2 each
i 40 Large kettle	Japanese folk potters	Takahashi	\$25
i 41 Glass punch set—14 pcs. 3 gal. bowl, 10" 12 cups, 1 ladle	Andries Copier	A. J. Van Dugteren & Sons 134 5th Ave. New York 11, N. Y.	\$36 set
i 42 "Tango"—Leerdam stemware—steel colored goblet sauterne cocktail cordial sherbet	Andries Copier	A. J. Van Dugteren & Sons	Black, Starr & Gorham Bonniers \$18 doz. \$18 doz. \$18 doz. \$12 doz. \$18 doz.
i 43 "Silja"—tumblers—5 sizes smoke, green, clear iced tea highball old fashioned juice whiskey	Kay Franck	Waertsila Corp. 225 5th Ave. New York 10, N. Y.	Georg Jensen \$26.40 doz. \$24 doz. \$21.60 doz. \$18 doz. \$10.80 doz.
i 45 After-dinner cup and saucer—porce- lain, "Coins" decoration	Raymond Loewy	Continental Division, Rosenthal-Block China Corp. 21 E. 26th St. New York 10, N. Y.	Bloomingdale's Saks Fifth Ave. \$4.25
i 46 Bread and butter plate—porcelain, "Coins" decoration	Raymond Loewy	Continental	Bloomingdale's Saks Fifth Ave. \$2.50
i 47 Coffee pot—porcelain, "Coins" decoration	Raymond Loewy	Continental	Bloomingdale's Saks Fifth Ave. \$16.50
i 48 Dessert plate—porcelain, "Coins" decoration	Raymond Loewy	Continental	Bloomingdale's Saks Fifth Ave. \$2.95

Item	Designer	Manufacturer or Distributor	Retailer Approximate price
i 49 Dinner plate—porcelain, "Coins" decoration	Raymond Loewy	Continental	Bloomingdale's Saks Fifth Ave. \$4
i 50 Platter—porcelain, "Coins" decoration, 14" long	Raymond Loewy	Continental	Bloomingdale's Saks Fifth Ave. \$14
i 51 Teacup and saucer—porcelain, "Coins" decoration	Raymond Loewy	Continental	Bloomingdale's Saks Fifth Ave. \$4.50
i 52 Bowl with ladle—porcelain, "Gayety" decoration, 12½" dia.	Raymond Loewy	Continental	Bloomingdale's Saks Fifth Ave. \$8.75 bowl \$3.25 ladle
i 53 Covered tureen—porcelain, "Gayety" decoration, 10½" dia.	Raymond Loewy	Continental	Bloomingdale's Saks Fifth Ave. \$18
i 54 Oval platter—porcelain, "Gayety" decoration, 14½" long	Raymond Loewy	Continental	Bloomingdale's Saks Fifth Ave. \$9.25
i 55 Plate—black circles on off white, hand thrown ceramic, 9½" dia.	Jane Dickerman	Jane Dickerman 126 W. Grand Ave. Chicago 10, Ill.	Decorators & architects \$5 each
i 56 Plate—white circles on black, hand thrown ceramic, 9½" dia.	Jane Dickerman	Jane Dickerman	\$5 each
i 57 Highball glass—"Laguna"	James Rosati	The Duncan & Miller Glass Co. Washington, Pa.	Saks Fifth Ave. \$1 each
i 58 Old-fashioned glass—"Laguna"	James Rosati	Duncan & Miller	Saks Fifth Ave. \$1 each
i 59 Fruit juice glass—"Laguna"	James Rosati	Duncan & Miller	Saks Fifth Ave. \$1 each
i 60 Stainless steel flatware— 5-pc. place setting		Evans International 12 Arrow St. Cambridge, Mass.	B. Altman \$5 set
i 64 Steak knives—stainless steel	Folke Arstron	Gense Import, Ltd. 15 E. 26th St. New York, N. Y.	Abraham & Straus \$14 set of 6

Item	Designer	Manufacturer or Distributor	Retailer Approximate price
i 65 Large plate—yellow and black stoneware, 12½" dia.	Glidden Parker	Glidden Pottery Alfred, N. Y.	B. Altman \$7.50
i 66 Buffet plate—yellow and black stoneware	Glidden Parker	Glidden Pottery	B. Altman \$1.70
i 67 Salad bowl—yellow and black stoneware	Glidden Parker	Glidden Pottery	B. Altman \$4.30
i 68 Sugar bowl—yellow stoneware	Glidden Parker	Glidden Pottery	B. Altman \$2
i 69 Creamer—yellow stoneware	Glidden Parker	Glidden Pottery	B. Altman \$2
i 70 Coffee pot—incised semi-vitreous china	Russel Wright	The Harker Pottery Co. East Liverpool, Ohio	R. H. Macy \$4.95
i 71 Covered casserole—incised semi-vitreous china, 2½" qts.	Russel Wright	The Harker Pottery Co.	R. H. Macy \$4.95
i 72 Oval platter—incised semi-vitreous china, 13¼" long	Russel Wright	The Harker Pottery Co.	R. H. Macy \$4.95
i 73 Covered vegetable bowl incised semi-vitreous	Russel Wright	The Harker Pottery Co.	R. H. Macy \$3.50
i 74 Bowl—incised semi-vitreous china, 1½" pints	Russel Wright	The Harker Pottery Co.	R. H. Macy \$1.75
i 75 Straw place mate—oval, Italy, "Capri"		Georg Jensen 667—Fifth Ave. New York 22, N. Y.	Georg Jensen 667 Fifth Ave. New York 22, N. Y. \$1
i 83 Flatware—6 pc. stainless steel place setting	Sam Bordelon	Arthur Salm 32 S. State St. Chicago 3, Ill.	Georg Jensen \$12.50 set
i 84 Place mats with colored borders red yellow blue		Manuel Serra 1400 Aspen St., N. W. Washington, D. C.	Georg Jensen \$1.30 each
i 85 Pepper mill—white porcelain and rosewood	Trudi and Harold Sitterle	Sitterle Ceramics Croton Falls, N. Y.	G. J. Mayhew \$10
i 86 Salt dish with spoon—rosewood, porcelain	Trudi and Harold Sitterle	Sitterle Ceramics	G. J. Mayhew \$3.50

	Item	Designer	Manufacturer or Distributor	Retailer Approximate price
i 88	Berry dish—Leerdam glass, 5" dia.	A. D. Copier	A. J. Van Dugteren 134 Fifth Ave. New York 11, N. Y.	Black, Starr & Gorham \$18 dozen
i 90	Bowl—Leerdam glass, 9" dia.	A. D. Copier	A. J. Van Dugteren	Black, Starr & Gorham \$5
i 91	Fruit juice glass— dark Leerdam glass	A. D. Copier	A. J. Van Dugteren	Black, Starr & Gorham \$9 dozen
i 92	Goblet—dark Leerdam glass	A. D. Copier	A. J. Van Dugteren	Black, Starr & Gorham \$18 dozen
i 93	Tumbler—dark Leerdam glass	A. D. Copier	A. J. Van Dugteren	Black, Starr & Gorham \$9
i 94	Linen place mat— gray stripes on white	Kathryn Lathrop Welch	Kathryn Lathrop Welch Angelica, New York	America House 32 E. 52nd St. New York 22, N. Y. \$2.80 each
i 95	Coffee carafe and warmer— copper, Pyrex and iron, candle warmer, 8 cup	Ernest Sohn	Ernest Sohn Creations 225 Fifth Ave. New York 10, N. Y.	B. Altman \$9 set
MISCELLANEOUS				
J 2	"Turf Tender"—lawn rake Tenite tines—18" wide	Charles Wolk	The Campro Sales Co. 1300 4th St. Canton 2, Ohio	Hardware depts. and shops \$1.79
J 4	"Your Valet"—clothes brush—all plastic white bristles blue bristles	Henry LeVant	LeVant Brush Co. 15004 Oxnard St. Van Nuys, Calif.	B. Altman Lewis & Conger \$4.50 each
J 6	Closet storage set nickel plated steel, rubber covered hangers, wood bar	Carl Ferrara	Veri Neet 154-63 23rd Ave. Whitestone, N. Y.	Hammacher-Schlemmer 145 E. 57th St. New York 22, N. Y. \$14 per unit
J 7	Glass sand urn Pyrex with aluminum sand tray		Loumac Supply Corp. 327 E. 103rd St. New York 29, N. Y.	Decorators and architects \$30
J 8	Gardening gloves for men— "Green Thumb," vinyl-treated, washable cotton		Edmont Mfg Co. Walnut St. Coshocton, Ohio	R. H. Macy \$.98

Item	Designer	Manufacturer or Distributor	Retailer Approximate price
J 10	George Kosmak	Kosmak Fireplaces 45 Castle St. San Francisco 11, Calif.	Decorators and architects \$150
J 11	George Masselman	Masselman Designs West Redding, Conn.	New Design 33 E. 75th New York, N. Y. \$13
J 12		Millers Falls Co. Greenfield, Mass.	Hardware depts. and shops \$6.50
J 15		Salton Mfg. Co. 29-31 Jumel Pl. New York 32, N. Y.	Abraham & Straus W. & J. Sloane \$79.50
J 16		Union Steel Products Co. Albion, Mich.	Summer furniture depts. \$8.95

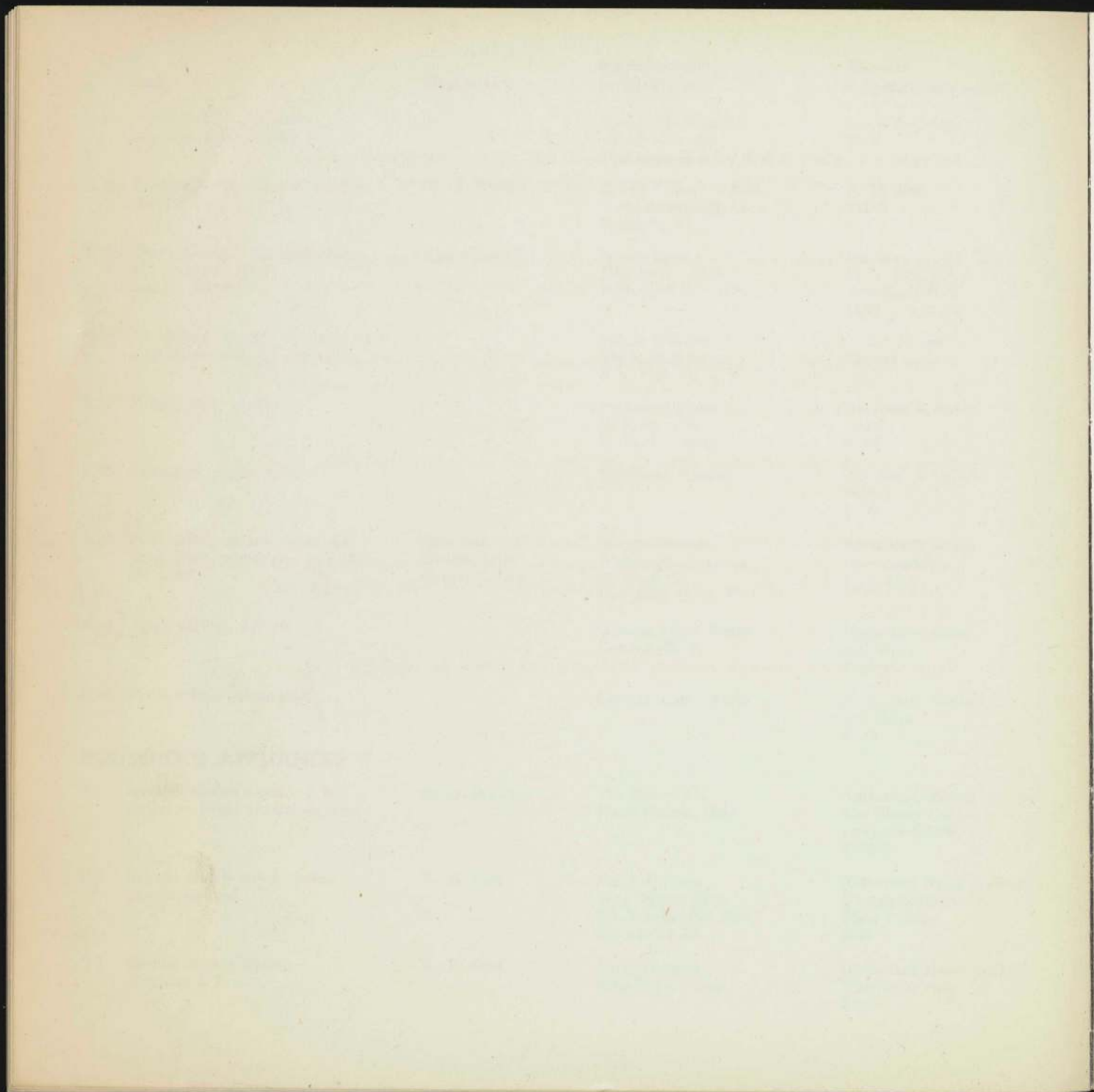
KITCHEN AND CLEANING EQUIPMENT

K 1	"Cutco"—9-pc. kitchen service set Lamb patented handles—stainless steel paring knife utility knife heavy utility knife carving knife slicing knife wide blade chef's knife service fork carving fork spatula		The Aluminum Cooking Utensil Co. Cutco Cutlery Div. New Kensington, Pa.	Sold direct \$2.20 \$4.95 \$5.65 \$8.65 \$7.95 \$9.95 \$3.65 \$4.95 \$3.95
K 2	"Cutco"—steak knife Lamb patented handle		The Aluminum Cooking Utensil Co.	Sold direct \$3.85
K 3	Cork screw—stainless steel with Palissandre wood handle	Kay Bojesen	Bonniers 605 Madison Ave. New York 22, N. Y.	Bonniers 605 Madison Ave. New York 22, N. Y. \$2.50
K 5	Cheese slicer—stainless steel with Palissandre wood handle	Kay Bojesen	Bonniers	Bonniers \$3.50
K 14	Jumbo salad basket collapsible, tinned steel		H. A. Mack & Co. 165 Newbury St. Boston 16, Mass.	Bonniers \$6.50
K 16	"Norplac"—pastry spoon polyethylene and polystyrene	Clayt Laughlin	Northwest Plastics 65 Plato St. St. Paul 1, Minn.	Abraham & Straus Stern's \$.29

Item	Designer	Manufacturer or Distributor	Retailer Approximate price
K 17 "Quik Suds"—dishwasher interchangeable brushes		Osrow Products Co. 123-07 101st Ave. Richmond Hill 19, N. Y.	Lewis & Conger \$7.95
K 18 Refrigerator storage set, stainless steel 2 - 1 pt., 1 - 1 qt., 1 - 2 qt.	W. A. Welden	Revere Copper & Brass div. Rome Mfg. Co. Rome, N. Y.	R. H. Macy \$11.95
K 19 "Susie Flipper"—pancake turner 15"—stainless steel bakelite handle	Paul Grancell	Rowen Corp. 5107 Sunset Blvd. Hollywood 27, Calif.	Barmart 62 W. 45th St. New York, N. Y. \$1.95
K 27 11 kitchen utensils on rack, each a single piece of stainless steel		Joseph Franken 200 E. 63rd St. New York 21, N. Y.	Georg Jensen \$30 set
K 29 Mixing fork—plastic		Northwest Plastics 65 Plato Ave. St. Paul 1, Minn.	Abraham & Straus Stern's \$.29
K 30 Triangular plastic ladle		Northwest Plastics	Abraham & Straus Stern's \$.39
K 32 Dish towels—cotton, rayon, and linen, black, white, gray and blue— 20" x 30"	John and Earline Brice Robert S. Low	Martex Division Wellington Sears Co. 65 Worth St. New York 13, N. Y.	Abraham & Straus Bloomingdale's \$.59 each
K 33 Pyrex pie-dish, 11" dia.		Corning Glass Works Corning, N. Y.	Housewares depts. and shops \$.59
K 34 Pyrex oblong baking dish		Corning Glass Works	Housewares depts. and shops \$.79

HOUSEHOLD APPLIANCES

L 1 Movable clothes washer—6 lb. capacity—baked enamel on steel	Henry Dreyfuss	The Hoover Co. North Canton, Ohio	Authorized Hoover dealers The Hoover Co. Longacre 5-7100 \$119.95
L 2 Electric clothes dryer—baked enamel on steel	W. B. Ford	Norge Division Borg-Warner Corp. 234 Merchandise Mart Chicago 54, Ill.	Authorized Norge dealers Warren-Connolly Co. Plaza 7-1300 \$239
L 3 Electric clothes washer— matching L 2	W. B. Ford	Norge Division Borg-Warner Corp.	Authorized Norge dealers Warren-Connolly Co. \$299





An item is eligible if it can be bought in the U.S.A. market, if it is new in this market since the previous show, and if it does not attempt to imitate the past. Home made or foreign, machine made or handcraft, all are acceptable.

Items selected remain on exhibition in Chicago for one year (January to January, June to June). Items not selected are returned to sources. About 500 items are shown in about 5,500 square feet.

A New York version of Good Design is presented in the Museum of Modern Art each autumn, usually on the ground floor, for about eight weeks. Some 3,000 square feet are available, and correspondingly fewer items are shown.

Catalogs with detailed information about each item are issued for every showing in both cities and are sold by mail as well as in the exhibitions.

Distinguished new settings are created for the exhibits each January in Chicago and each fall in New York by a designer or architect appointed annually by the Museum of Modern Art. Charles Eames, Finn Juhl, Paul Rudolph and Alexander Girard have designed the first four of these installations.

Good Design originated in January 1950 and has continued regularly ever since.

