

# Service Manual

50 inch Class 1080p Plasma HDTV

Model No. **TC-P50S30X**

GPF14DU Chassis

*Simplified*

Please file and use this manual together with the service manual for Model No. TC-P50S30, ORDER NO. MTNC110208CE.

## WARNING

This service information is designed for experienced repair technicians only and is not designed for use by the general public. It does not contain warnings or cautions to advise non-technical individuals of potential dangers in attempting to service a product. Products powered by electricity should be serviced or repaired only by experienced professional technicians. Any attempt to service or repair the product or products dealt with in this service information by anyone else could result in serious injury or death.

## TABLE OF CONTENTS

	PAGE	PAGE
<b>1 Different points</b> -----	<b>2</b>	
1.1. Mechanical Replacement Parts List -----	2	
1.2. Electrical Replacement Parts List -----	2	
<b>2 Block Diagram</b> -----	<b>3</b>	
2.1. Main Block Diagram -----	3	
2.2. Block (1/4) Diagram-----	4	
<b>3 Schematic Diagram</b> -----	<b>5</b>	
3.1. A-Board (1/15) Schematic Diagram-----	5	
3.2. A-Board (4/15) Schematic Diagram-----	6	
3.3. A-Board (10/15) Schematic Diagram-----	7	

**Panasonic**<sup>®</sup>

© Panasonic Corporation 2011.  
Unauthorized copying and distribution is a violation of law.

# 1 Different points

## 1.1. Mechanical Replacement Parts List

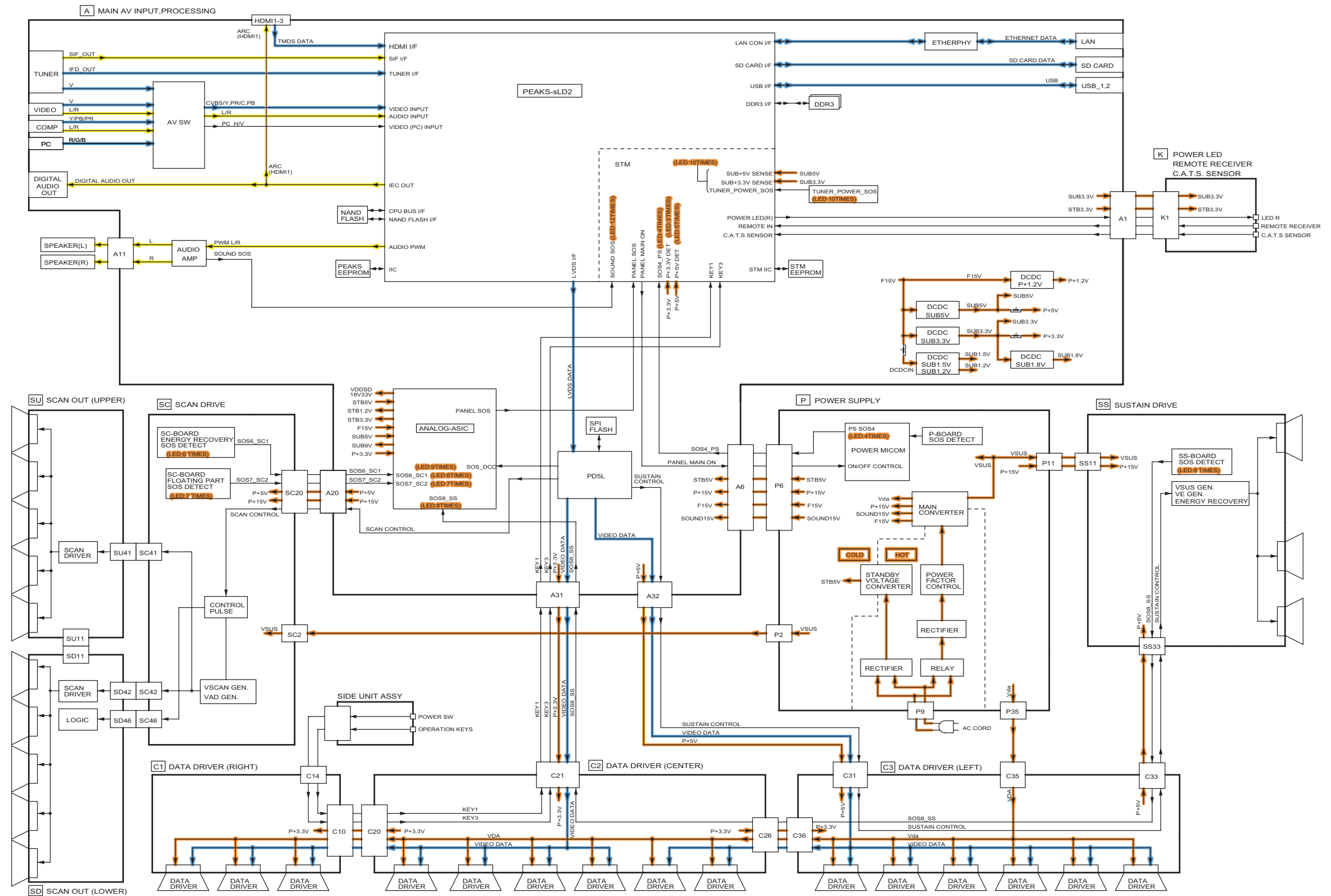
Ref. No.	Parts No.		Parts name & Description	Pcs	Remarks
	TC-P50S30	TC-P50S30X			
5	MD50F14C3A	MD50F14AAJ	PLASMA DISPLAY PANEL	1	△
13	TQB2AA0604	TQB2AC0032-1	INSTRUCTION BOOK(ENG/SPA)	1	PAVCA △
35	TXFKU05ZSER	TXFKU36ZSER	REAR COVER	1	PAVCA △

## 1.2. Electrical Replacement Parts List

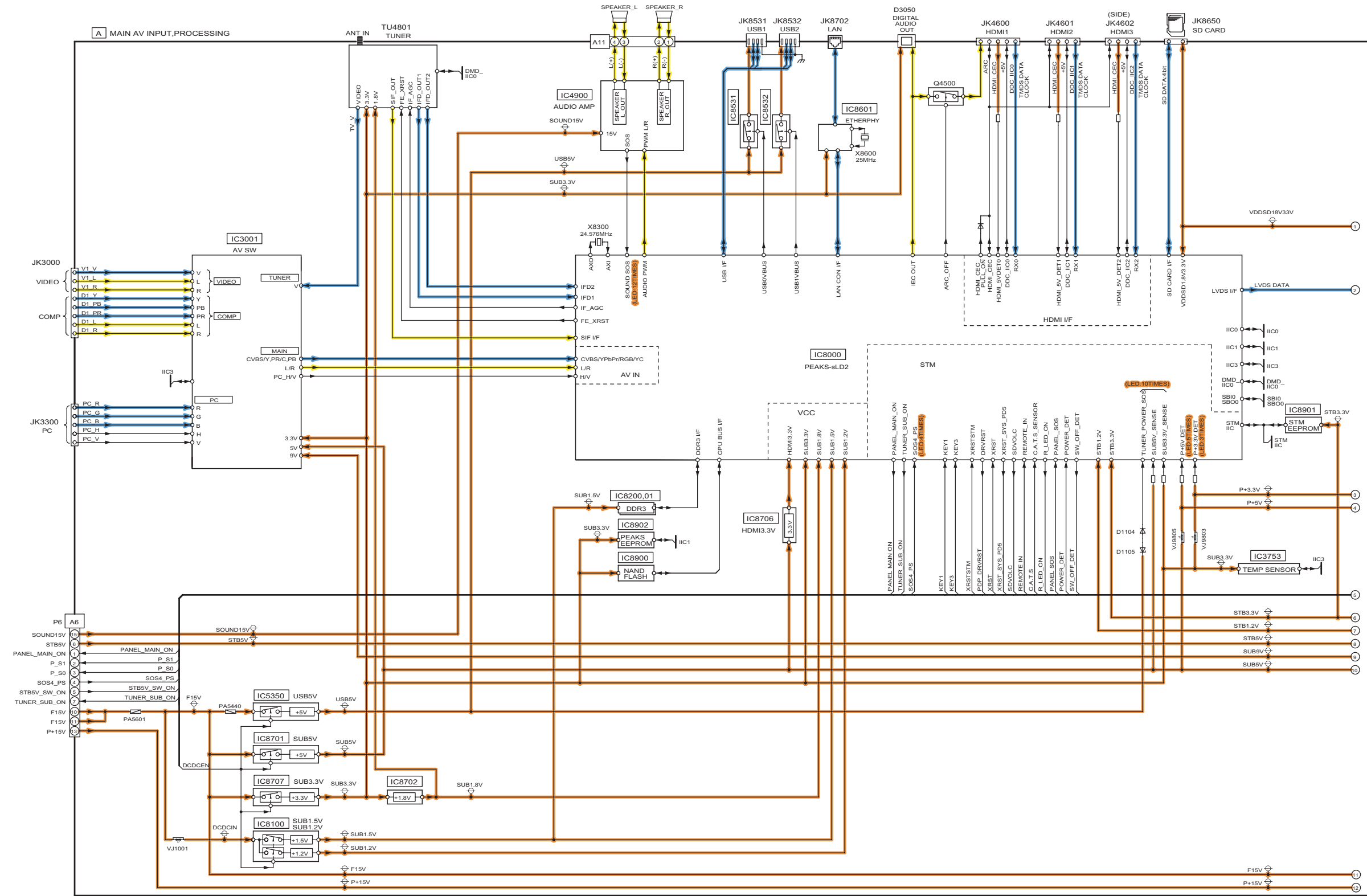
Ref. No.	Parts No.		Parts name & Description	Pcs	Remarks
	TC-P50S30	TC-P50S30X			
PCB	TXN/A1PHUUS	TXN/A1MNUXS	CIRCUIT BOARD A	1	(RTL) PAVCA △
PCB	TXNSC1PHUU	TXNSC1MNUX	CIRCUIT BOARD SC	1	(RTL) PAVCA △
PCB	TXNSS1PHUU	TXNSS1MNUX	CIRCUIT BOARD SS	1	(RTL) PAVCA △
PCB	TXNSU1PHUU	TXNSU1MNUX	CIRCUIT BOARD SU	1	PAVCA △
C3301	----	F1J1A106A043	C 10UF, 10V	1	
C3302	----	F1J1A106A043	C 10UF, 10V	1	
C3303	----	F1J1A106A043	C 10UF, 10V	1	
IC8900	TVRS095S	TVRS095AFS	IC	1	PAVCA
IC8902	TVRS021S	TVRS220S	IC	1	PAVCA
IC9304	TVRS111S	TVRS111AFS	IC	1	PAVCA
JK3300	----	K1FY315A0010	CONNECTOR	1	
JS001	----	D0GBR00J0004	M 0 OHM J 1/10W	1	
JS002	D0GBR00J0004	----	M 0 OHM J 1/10W	0	
JS003	----	D0GBR00J0004	M 0 OHM J 1/10W	1	
R3012	----	D0GA680JA023	M 68 OHM, J,1/16W	1	
R3013	----	D0GA101JA015	M 100 OHM, J,1/16W	1	
R3014	----	D0GA680JA023	M 68 OHM, J,1/16W	1	
R3015	----	D0GA101JA015	M 100 OHM, J,1/16W	1	
R3016	----	D0GA680JA023	M 68 OHM, J,1/16W	1	
R3301	----	D1BD75R0A066	M 75.0 OHM,F,1/8 W	1	
R3302	----	D1BD75R0A066	M 75.0 OHM,F,1/8 W	1	
R3303	----	D1BD75R0A066	M 75.0 OHM,F,1/8 W	1	
R3304	----	D0GDR00J0004	M 0 OHM, 1/8W	1	
R3305	----	D0GDR00J0004	M 0 OHM, 1/8W	1	
R3313	----	D0GA472JA023	M 4.7KOHM, J,1/16W	1	
R3314	----	D0GA472JA023	M 4.7KOHM, J,1/16W	1	
R16285	EXB38V623J	EXB38V823J	M 82 kOHM 1/16 W	1	
R16309	ERG2FJS563D	ERG2FJS393D	M 39K OHM, J, 2W	1	
R16310	ERG2FJS563D	ERG2FJS393D	M 39K OHM, J, 2W	1	
R16311	ERG2FJS563D	ERG2FJS393D	M 39K OHM, J, 2W	1	
R16317	D1BD5762A077	D1BD5232A077	M52.3KOHM,D,1/10W	1	PAVCA
R16318	D1BD5762A077	D1BD5232A077	M52.3KOHM,D,1/10W	1	PAVCA

# 2 Block Diagram

## 2.1. Main Block Diagram

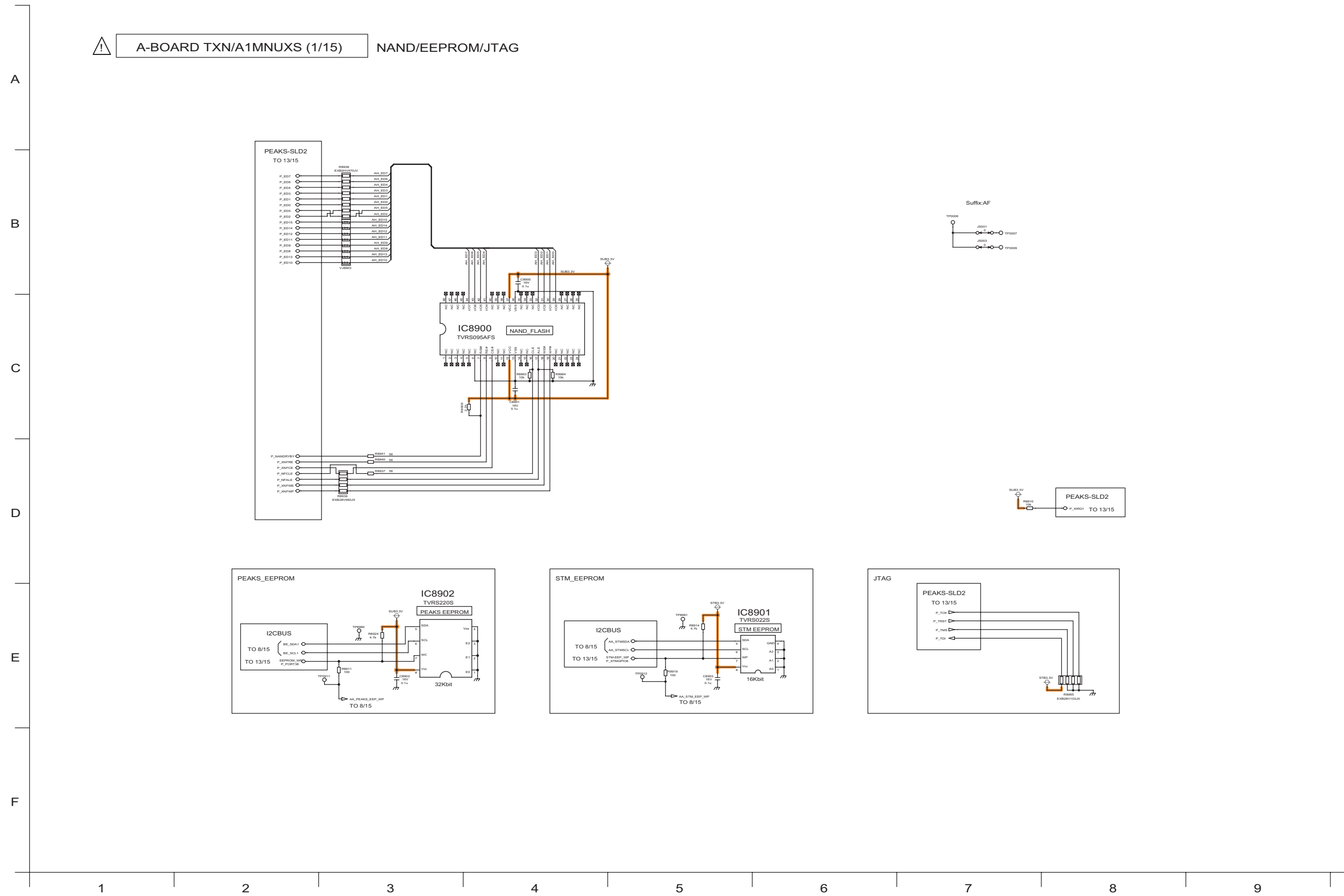


## 2.2. Block (1/4) Diagram

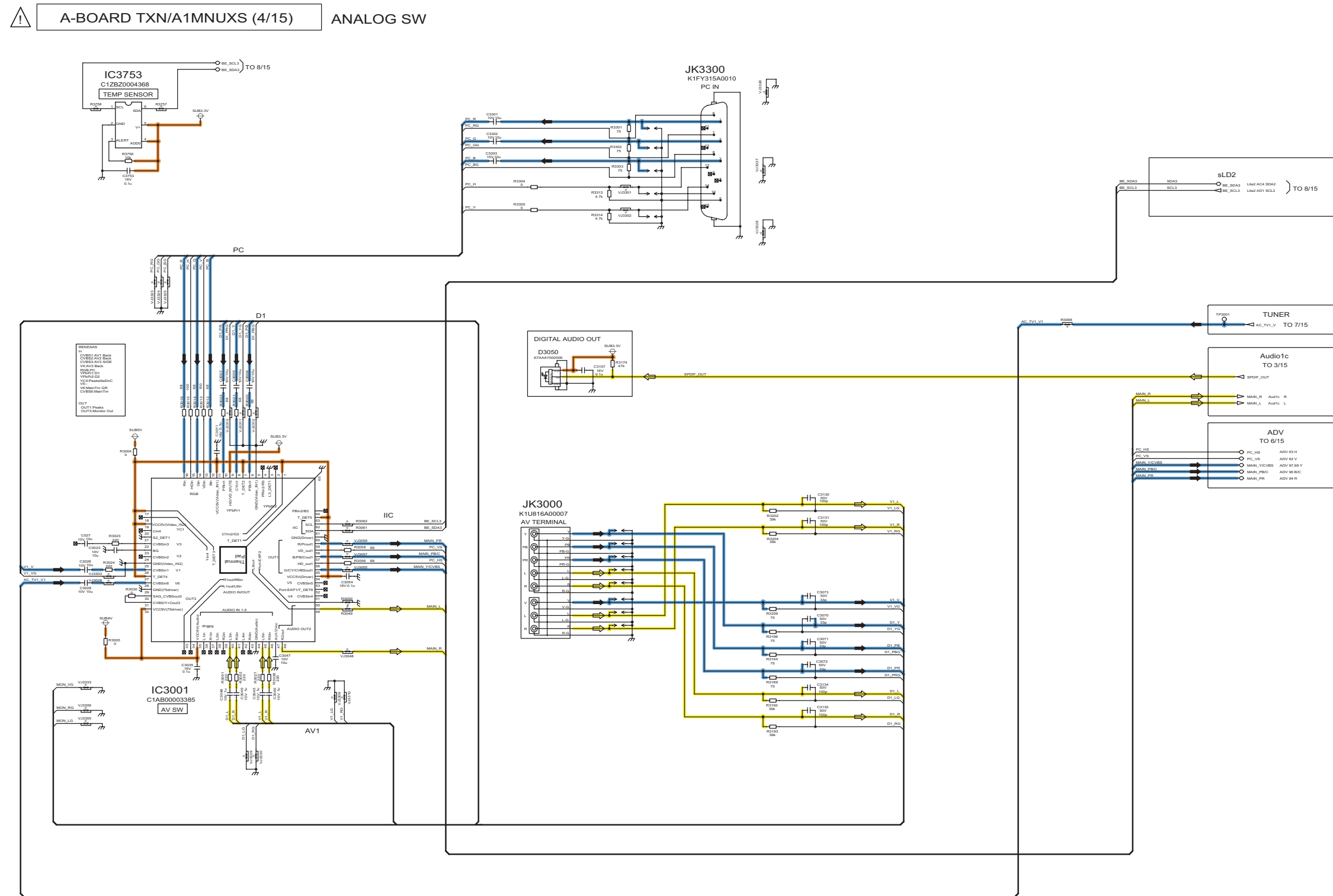


# 3 Schematic Diagram

## 3.1. A-Board (1/15) Schematic Diagram

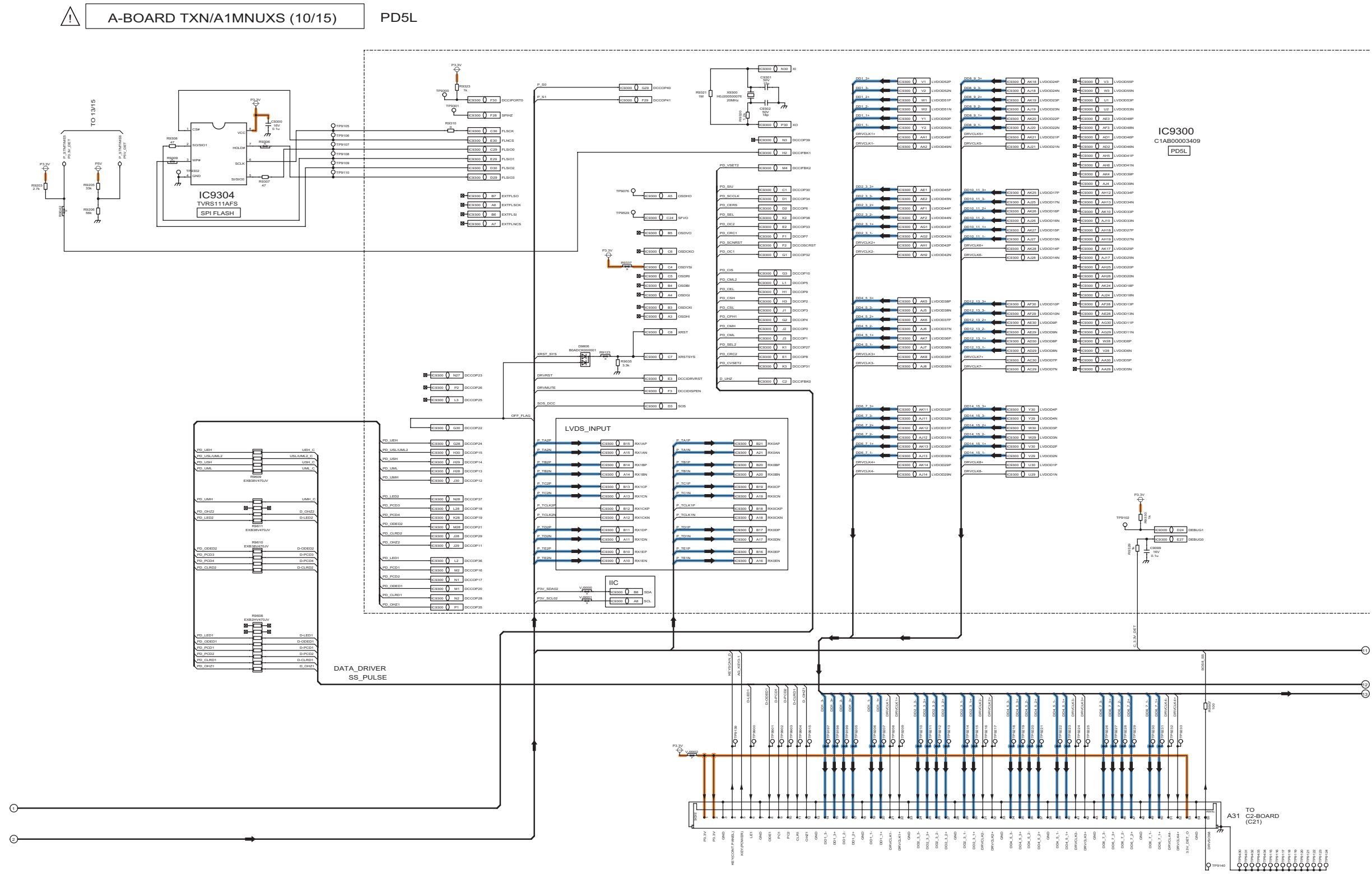


### 3.2. A-Board (4/15) Schematic Diagram



28 29 30 31 32 33 34 35 36

### 3.3. A-Board (10/15) Schematic Diagram



82

83

84

85

86

87

88

89

90