

GPL Geometrically Programmed Louvers

The Pelco GPL is a precisely aimed and controlled traffic signal louvering system which is designed for quick easy installation. Drivers see a full circle of bright projected light when they are within the preset field of vision. The GPL is available without a visor or with a full circle visor that easily replaces the existing visor on most signals.



GPL, Geometrically Programmed Louver, 12" w/o Visor



GL-1001	-	<input type="text"/>	-	PNC
		View Angle		
		7=7°		
		8=8°		
		9=9°		
		11=11°		
		13=13°		
		15=15°		
		23.5=23.5°		
		42=42°		

Note:
Typical factory set view angle is 8°. Additional view angles can be achieved by relocating the baffles. See diagram on T13-2.

GPL, Geometrically Programmed Louver, 12" w/ Visor



GL-1010	-	<input type="text"/>	-	<input type="text"/>	-	<input type="text"/>
		View Angle		Mounting Clips		Coating
		07=7°		Blank=No Clips		P__=Paint
		08=8°		UC=Universal Clips		
		09=9°				
		11=11°				
		13=13°				
		15=15°				
		23.5=23.5°				
		42=42°				

Note:
1. Shown with universal clip option.
2. Typical factory set view angle is 8°. Additional view angles can be achieved by relocating the baffles. See diagram on T13-2.

Note: 1. All assemblies are supplied standard with stainless steel fasteners.
2. Universal Clips fit Eagle, Econolite, TCT, Mark IV, and McCain signals.
3. See Reference Section page v for available paint colors.

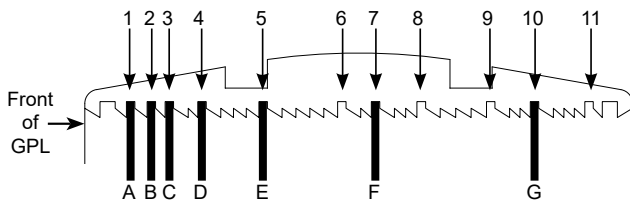


GPL View Angle Adjustments

The Pelco GPL is a precisely aimed and controlled traffic signal lowering system which is designed for quick easy installation. Drivers see a full circle of bright projected light when they are within the preset field of vision. The GPL is available without a visor or with a full circle visor that easily replaces the existing visor on most signals.



GPL Baffle Locations 1 thru 11 (for other than standard factory set 8° view angle)

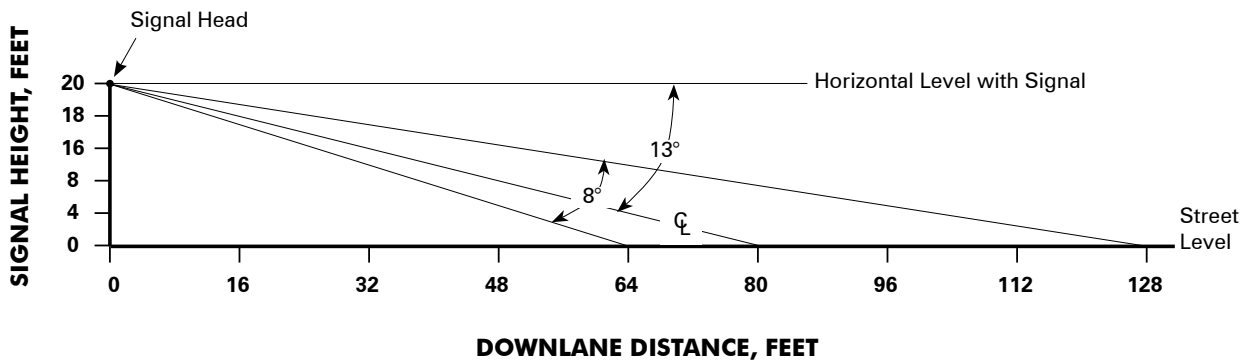


Baffles A thru G
(Baffles shown in factory set positions for 8° View Angle)

View Angle	Baffle Position for GPL
8°	All baffles in factory set position #1, 2, 3, 4, 5, 7, & 10
7°	Move baffle "G" to #11 position
9°	Move baffle "G" to #9 position
11°	Move baffle "G" to #8 position
13°	Omit baffle "G" completely
15°	Omit baffle "G" completely & move baffle "F" to #6 position
23½°	Omit baffle "F" & "G" completely
42°	Omit baffle "E", "F" & "G" completely

Typical Example at 8° View Angle

Signal Height: 20 Ft
Furthest Distance Downlane: 128 Ft
Closest Distance Downlane: 64 Ft



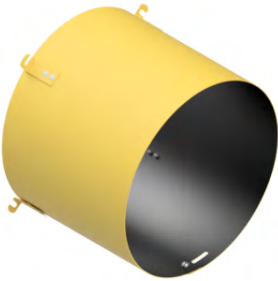
Aluminum Signal Visors

Full circle and tunnel signal visors are supplied with a universal clip for attachment to signal. Black inside, federal yellow or black outside.



Visor, Full Circle w/ Slots for 12" GPL w/ Universal Clips

SM-1028-UC - Coating
P__=Paint



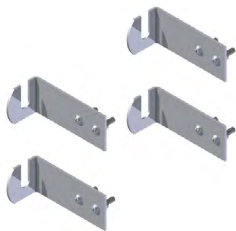
Visor, Full Circle w/o Slots for 12" Signal w/ Universal Clips

SM-1031-UC - Coating
P__=Paint



Visor, Tunnel for 12" Signal w/ Universal Clips

SM-1034-UC - Coating
P__=Paint



Universal Clip Set of 4

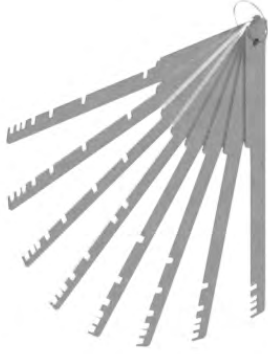
SM-1040 - Coating
P__=Paint

- Note: 1. All assemblies are supplied standard with stainless steel fasteners.
2. Universal Clips fit Eagle, Econolite, TCT, Mark IV, and McCain signals.
3. See Reference Section page v for available paint colors.



Signal Accessories

The adjustment tool makes it easy to install and adjust a GPL in an existing visor. Pelco also provides a complete installation kit.



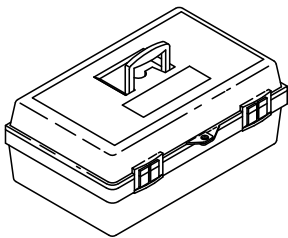
GL-1008-PNC **GPL Combs, Baffle Adjustment Set of 8, Stainless**
Includes 7°, 8°, 9°, 11°, 13°, 15°, 23.5°, 42°



GL-1002-PNC **Adjustment Tool, GPL w/ Depth Gauge**



GL-2001-PNC **Installation Kit w/o Screw Gun**
Includes: adjustment tool, visor marking template & sleeve, marking pen, 1/4" & 5/16" shock cord in a small tool box.



GL-2002-PNC **Installation Kit w/ Screw Gun**
Includes: adjustment tool, visor marking template & sleeve, marking pen, 1/4" & 5/16" shock cord, cordless screw gun, battery & charger in a large tool box.

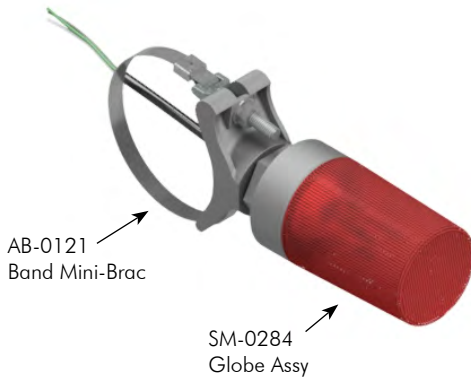
Confirmation Lights

Used to confirm a traffic signal is red when a car enters the intersection. Available in clear, red, or blue and various mounting applications.



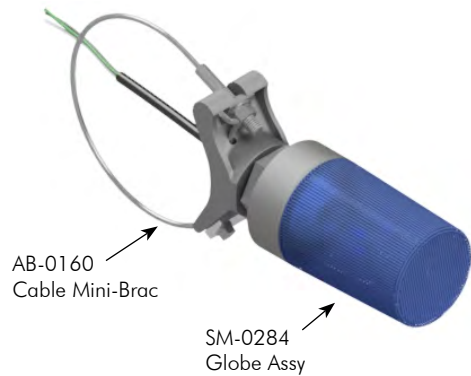
Confirmation Light Assy w/ Globe

	Globe Color	-	Coating
SM-0284	<input type="text"/>	-	<input type="text"/>
	CL=Clear RD=Red BL=Blue		PNC=Process No Color P__=Paint



Confirmation Light Assy w/ Globe Band Mount Astro Mini-Brac

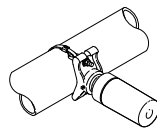
	Globe Color	-	Band Length	-	Coating
SM-0286	<input type="text"/>	-	<input type="text"/>	-	<input type="text"/>
	CL=Clear RD=Red BL=Blue		29=29" Band 42=42" Band		PNC=Process No Color P__=Paint



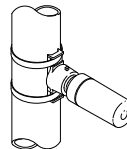
Confirmation Light Assy w/ Globe Cable Mount Astro Mini-Brac

	Globe Color	-	Cable Length	-	Coating
SM-0321	<input type="text"/>	-	<input type="text"/>	-	<input type="text"/>
	CL=Clear RD=Red BL=Blue		45=45" Cable 62=62" Cable 84=84" Cable		PNC=Process No Color P__=Paint

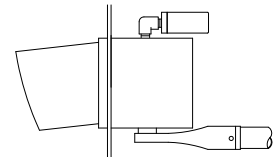
Typical Applications:



Mast Arm Mount
Astro-Mini-Brac



Side-of-Pole Mount
Banded Narrow Hub



Plumbizer Mount

- Note: 1. All assemblies are supplied standard with stainless fasteners and natural aluminum coating. Stainless upgrade to include stainless steel clamp screw or stainless cable.
 2. Bulbs not included with assembly. Recommended 67W or 69W 8000 hr traffic signal lamp (not to exceed 75W).
 3. See Reference Section page v for available paint colors.



Copper Safe® Cable Retainers

Pelco's anti-theft Cable Retainers are the best solution to help prevent copper cable theft in roadway lighting and traffic poles. Cable Retainers are available in various sizes, are easy to install, and work with Pelco's foundation anchors or existing foundations.



SP-6224-GLV **Cable Retainer Assy,
For 4" Foundation Anchor,
Galvanized Steel**

Note:
Works with Pelco's PB-5364 4" Foundation Anchor or with existing foundations with a 8" to 13-1/2" bolt circle. Secures 3/16" to 1/2" diameter cables.



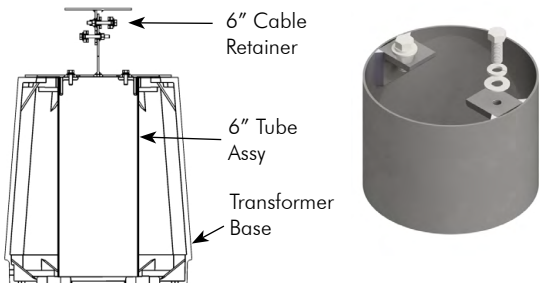
SP-6200-GLV **Cable Retainer Assy,
For 6" Foundation Anchor,
Galvanized Steel**

Note:
Works with Pelco's PB-5372 6" Foundation Anchor or with existing foundations with a 9-1/2" to 13-1/2" bolt circle. Secures 3/16" to 1/2" diameter cables.



SP-6205-GLV **Cable Retainer Assy,
For 8" Foundation Anchor,
Galvanized Steel**

Note:
Works with Pelco's PB-5375 8" Foundation Anchor or with existing foundations with a 11-1/2" to 17" bolt circle. Secures 3/16" to 1/2" diameter cables.



**Tube Assy for 6" Cable Retainer,
Galvanized Steel**

Length
SP-6358 - - GLV
04.5=4-1/2"
16.38=16-3/8"

Note: 1. All assemblies are supplied standard with stainless fasteners.



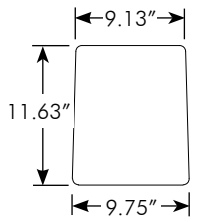
Copper Safe® Base Doors

Pelco's anti-theft Transformer Base Doors are shatter-resistant and pull-off resistant to protect against copper theft. The doors require a special Pelco Installation Kit which includes everything required for installing multiple doors and covers.



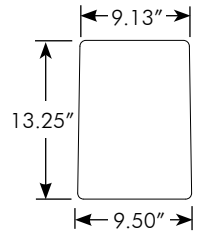
Door Assy, Copper Safe® Theft Deterrent, Steel Fits Akron TB1-17, TB1-17 Mod, TB2-17, & TB3-17 Transformer Bases

PB-5520 - Coating
P_ = Paint



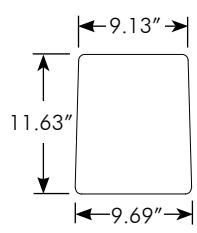
Door Assy, Copper Safe® Theft Deterrent, Steel Fits Akron TB1-20, TB1-20 Mod, TB2-20, & TB3-20 Transformer Bases

PB-5526 - Coating
P_ = Paint



Door Assy, Copper Safe® Theft Deterrent, Steel Fits Akron TB-17H Transformer Base

PB-5536 - Coating
P_ = Paint



- Note: 1. All assemblies are supplied standard with stainless fasteners.
2. Doors require AP-5121 Kit for installation.
3. Typically powder coated P40 Silver, see Reference Section page v for other available paint colors.



Copper Safe® Base Doors

Pelco's anti-theft Transformer Base Doors are shatter-resistant and pull-off resistant to protect against copper theft. The doors require a special Pelco Installation Kit which includes everything required for installing multiple doors and covers.



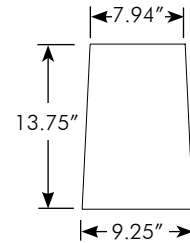
TRAFFIC ACCESSORIES



Door Assy, Copper Safe® Theft Deterrent, Steel Fits Union Metal Med Transformer Base

PB-5529 -

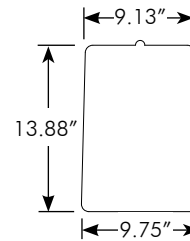
Coating
P__ = Paint



Door Assy, Copper Safe® Theft Deterrent, Steel Fits AB Chance Transformer Base

PB-5531 -

Coating
P__ = Paint



- Note: 1. All assemblies are supplied standard with stainless fasteners.
 2. Covers require AP-5121 Kit for installation.
 3. Typically powder coated P40 Silver, see Reference Section page v for other available paint colors.



Copper Safe® Hand Hole Covers

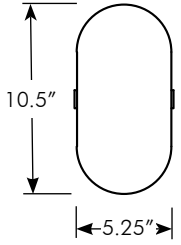
Pelco's anti-theft Hand Hole Covers are shatter-resistant and pull-off resistant to protect against copper theft. Copper Safe® covers are available for various sized hand holes. A special Pelco Installation Kit is required which includes everything needed for installing multiple covers and doors.



Hand Hole Cover Assy, Copper Safe® Theft Deterrent, Steel

Fits 4.38" x 9.63" to 5.13" x 10.38" Oval Opening

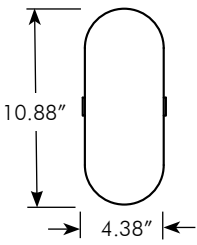
AP-3172 - Coating
P__ = Paint



Hand Hole Cover Assy, Copper Safe® Theft Deterrent, Steel

Fits 3.25" x 9.75" to 4.25" x 10.75" Oval Opening

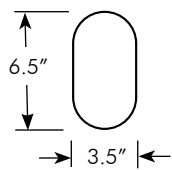
AP-3173 - Coating
P__ = Paint



Hand Hole Cover Assy, Copper Safe® Theft Deterrent, Steel

AP-3161 - Coating Fits 2.13" x 5.13" to 3.38" x 6.38"
P__ = Paint Oval Opening

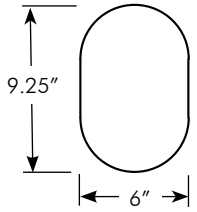
AP-3160 - Coating Fits 2" x 5" to 2.25" x 5.25"
P__ = Paint Rectangular Opening



Hand Hole Cover Assy, Copper Safe® Theft Deterrent, Steel

Fits 4.63" x 7.88" to 5.75" x 9.0" Oval Opening

AP-3167 - Coating
P__ = Paint



- Note: 1. All assemblies are supplied standard with stainless fasteners.
 2. Covers require AP-5121 Kit for installation.
 3. Typically powder coated P40 Silver, see Reference Section page v for other available paint colors.
 4. For hand hole cover matrix see page T13-11.



Copper Safe® Hand Hole Covers

Pelco's anti-theft Hand Hole Covers are shatter-resistant and pull-off resistant to protect against copper theft. Copper Safe® covers are available for various sized hand holes. A special Pelco Installation Kit is required which includes everything needed for installing multiple covers and doors.

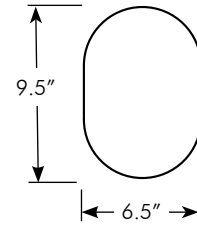


TRAFFIC ACCESSORIES



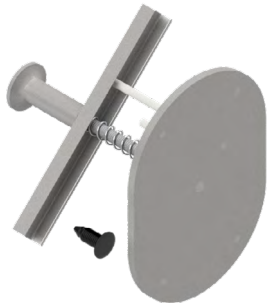
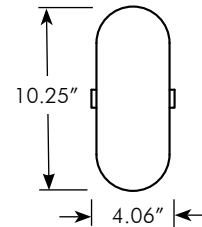
Hand Hole Cover Assy, Copper Safe® Theft Deterrent, Steel
Fits 5.63" x .863" to 6.38" x 9.38" Oval Opening

AP-3180 - Coating
P__ = Paint



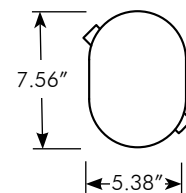
Hand Hole Cover Assy, Copper Safe® Theft Deterrent, Steel
Fits 3.38" x 9.5" Oval Opening

AP-3200 - Coating
P__ = Paint



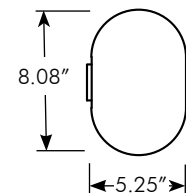
Hand Hole Cover Assy, Copper Safe® Theft Deterrent, Steel
Fits 4.63" x 6.75" to 5.25" x 7.38" Oval Opening

AP-3181 - Coating
P__ = Paint



Hand Hole Cover Assy, Copper Safe® Theft Deterrent, Steel
Fits 5" x 8" Oval Hand Hole Ring

AP-3158 - Coating
P__ = Paint



- Note: 1. All assemblies are supplied standard with stainless fasteners.
2. Covers require AP-5121 Kit for installation.
3. Typically powder coated P40 Silver, see Reference Section page v for other available paint colors.
4. For hand hole cover matrix see page T13-11.



Copper Safe® Hand Hole Covers

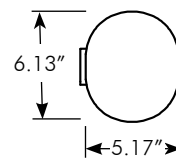
Pelco's anti-theft Hand Hole Covers are shatter-resistant and pull-off resistant to protect against copper theft. Copper Safe® covers are available for various sized hand holes. A special Pelco Installation Kit is required which includes everything needed for installing multiple covers and doors.



Hand Hole Cover Assy, Copper Safe® Theft Deterrent, Steel

Fits 3.38" x 4.38" to 5" x 16" Oval Opening on 8" OD Pole

AP-3162 - Coating
P_ = Paint



Installation Kit, Copper Safe® Theft Deterrent, for Hand Hole Covers & Doors

AP-5121-PNC

Note:
Required for installing Pelco's theft-deterrent hand hole covers and doors. Includes 3/16" & 3/8" drill bits, security extensions, and security extension wrench, in a PVC storage case. Installation Kit is reusable.

Part No.	Fits Opening Size		Overall Size		Page
	Width	Height	Width	Height	
AP-3172	4.38	9.63	5.25	10.5	T13-9
	5.13	10.38			
AP-3173	3.25	9.75	4.38	10.88	T13-9
	4.25	10.75			
AP-3161	2.13	5.13	3.5	6.5	T13-9
AP-3160 (Rect Opening)	2	5	3.5	6.5	T13-9
	2.25	5.25			
AP-3167	4.63	7.88	6	9.25	T13-9
	5.75	9			
AP-3180	5.63	8.63	6.5	9.5	T13-10
	6.38	9.38			
AP-3200	3.38	9.95	4.06	10.25	T13-10
AP-3181	4.63	6.75	5.38	7.56	T13-10
	5.25	7.38			
AP-3158 (for Hand Hole Ring)	5	8	5.25	8.08	T13-10
AP-3162 (for 8" Dia Pole)	3.38	4.38	5.17	6.13	T13-11
	5	6			

- Note: 1. All assemblies are supplied standard with stainless fasteners.
 2. Covers require AP-5121 Kit for installation.
 3. Typically powder coated P40 Silver, see Reference Section page v for other available paint colors.



This page is intentionally left blank.

