

Grafton Data Center

244 Worcester Street • Grafton, MA 01536



FULLY PERMITTED AND APPROVED



IDEAL FOR:

- » Wholesale Data Center
- » Powered Shell
- » Colocation Solutions
- » Server Hosting – Managed Hosting
- » Cloud Computing

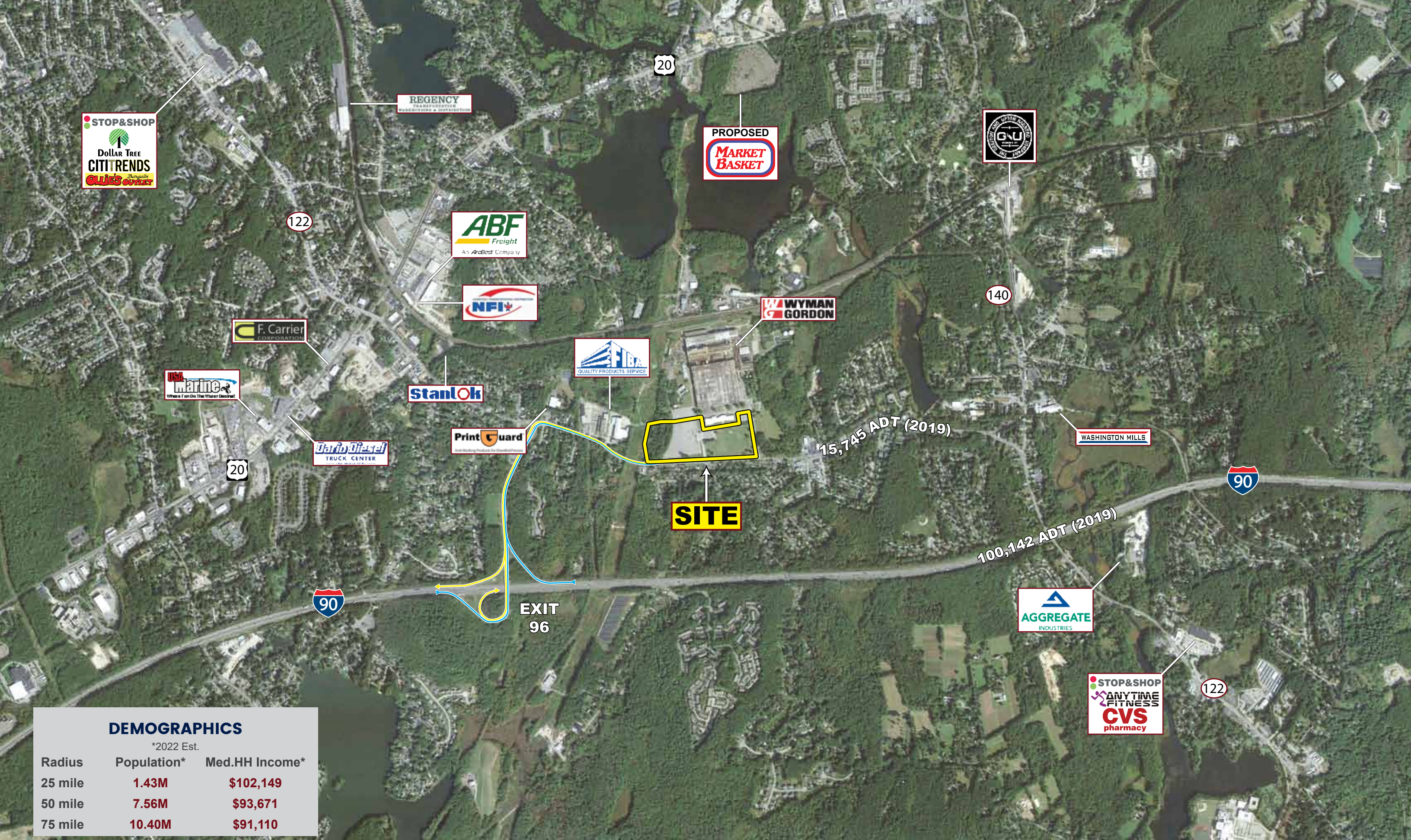
- Priority Development Overlay District
- Ground Lease or Build-to-Suit
- 26.2 Acres / Up to 331,700 SF
- 0.5 Miles to I-90 @ Exit 11
- Multiple Uses Allowed
- 50 Mile Population - 7.56 Million
- I-91 54 Miles / 51 Minutes
- I-84 20 Miles / 19 Minutes
- I-495 14 Miles / 12 Minutes

- **Available:** Up to 331,700 SF
For Custom Built Solutions
- **Building:** 1,070' x 310'
- **Office Space:** Class A
- **Lighting:** LED Fixtures
- **Clear Height:** Build-to-Suit
- **Fire Protection:** ESFR
- **Zoning:** Industrial/Light Industrial
- **Serviced By:** National Grid

Mike Hotarek
mhotarek@easternretail.com
Direct: 781-849-9017



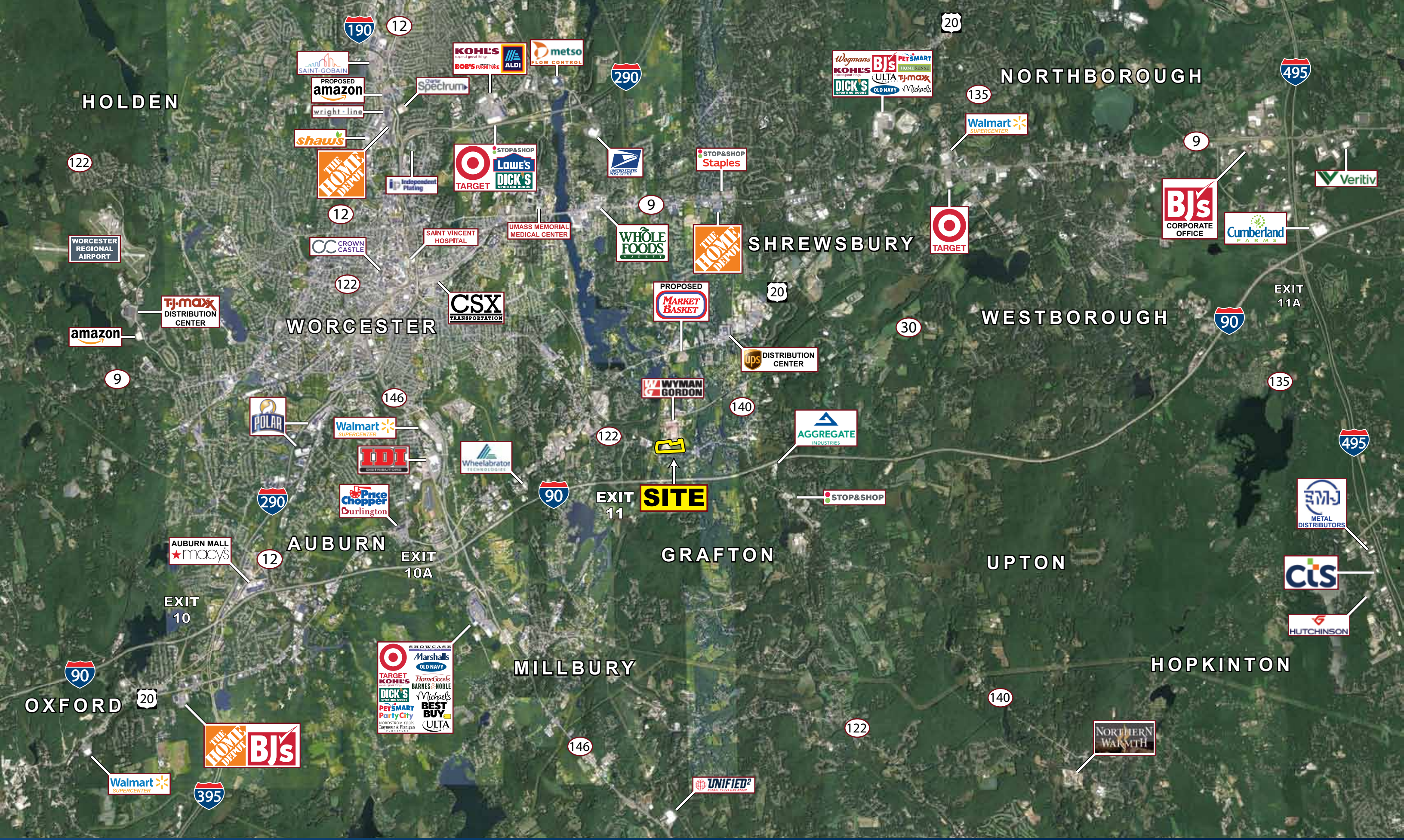




DEMOGRAPHICS

*2022 Est.

Radius	Population*	Med.HH Income*
25 mile	1.43M	\$102,149
50 mile	7.56M	\$93,671
75 mile	10.40M	\$91,110





AMTRAK/MBTA COMMUTER RAIL

WYMAN GORDON

122



BRIGHAM HILL RD.

WORCESTER ST. - 15,745 ADT (2019)

FAIRLAWN ST.

122

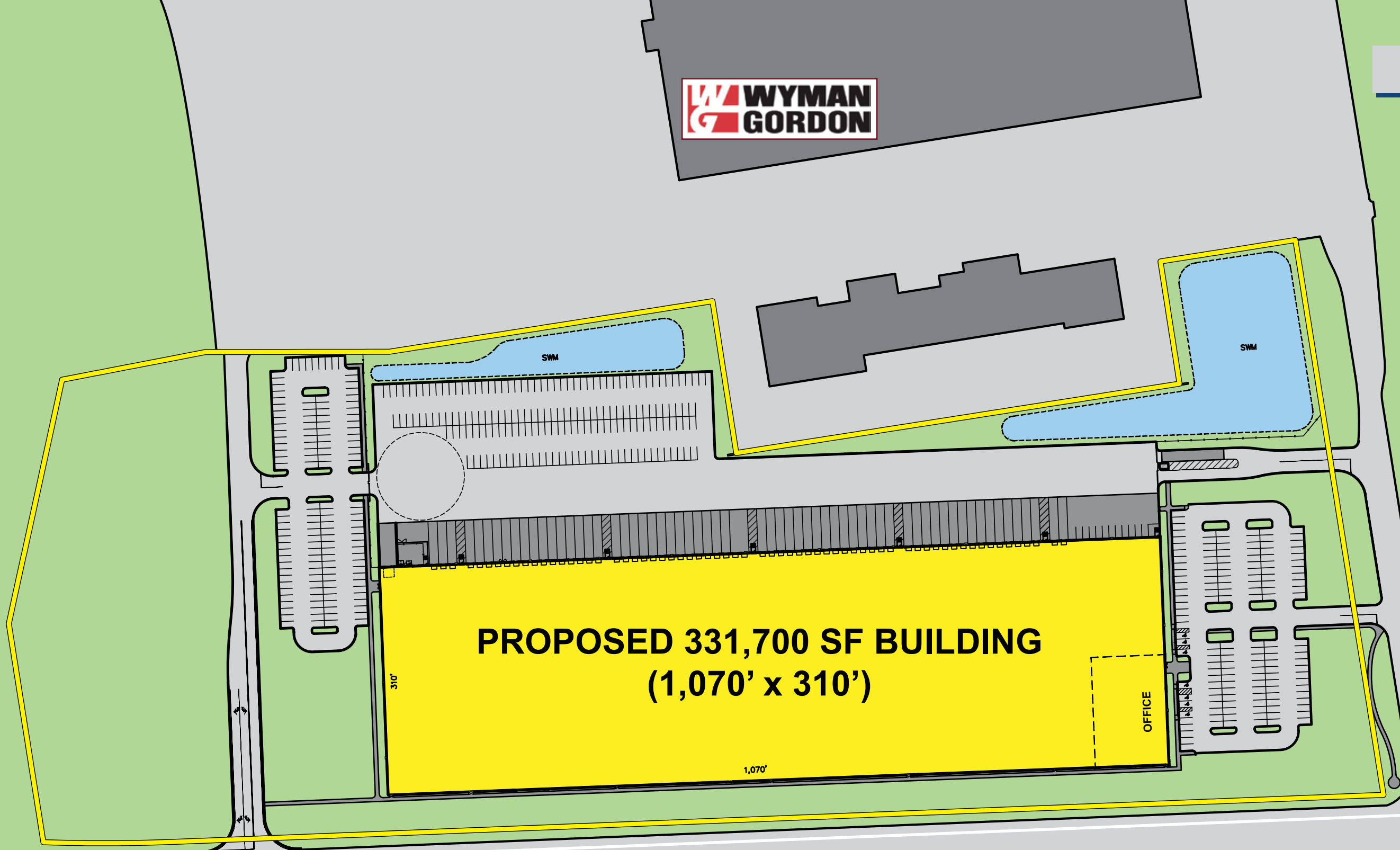
HILLTOP ST



Population/Workforce

*2022 Est.





WORCESTER STREET **122** **15,745 ADT (2019)**



Mike Hotarek
mhotarek@easternretail.com
Direct: 781-849-9017

Phone 781.849.9010 • Fax 781.849.9050 • www.easternretail.com • 25 Braintree Hill Office Park, Suite 305 • Braintree, MA 02184

The information above has been obtained from sources believed reliable. While we do not doubt its accuracy, we have not verified it and make no guarantee, warranty or representation about it. It is your responsibility to independently confirm its accuracy and completeness. Any projections, opinions, assumptions or estimates used are for example only and do not represent the current or future performance of the property. The value of this transaction to you depends on tax and other factors, which should be evaluated by your tax and financial advisors. You and your advisors should conduct a careful, independent investigation of the property to determine to your satisfaction, the suitability of the property for your needs.