



www.polyskid.com
P. O. Drawer 349, Monticello, GA. 31064
Phone: 800-542-7659, Fax: 706-468-2881
E-Mail: polytech@polyskid.com

Grain Tank Cross Auger Trough Liner For John Deere 9650 & 9660 “Walker” Combine

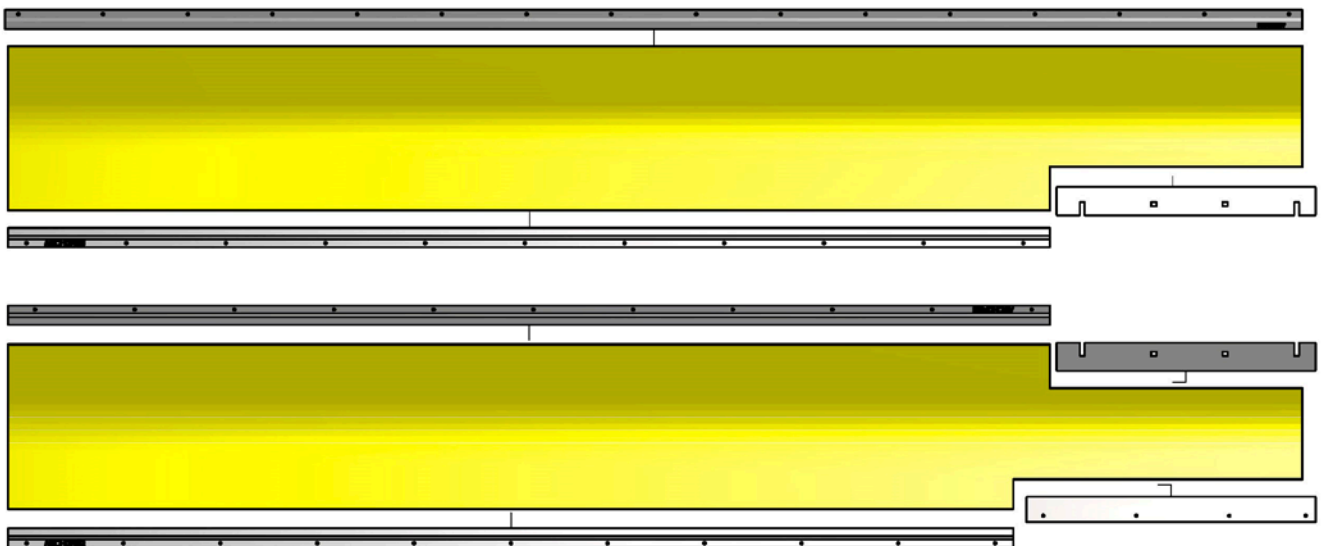
For this kit to perform properly, it is necessary to have a minimum of ¼” clearance between the bottom of the auger trough and the bottom of the auger flighting. Measure near the right side of the front auger. (SEE TOP PICTURE ON PAGE 2) If you do not have this much clearance and can not obtain more clearance by adjusting the right hand auger bearing support, PLEASE DO NOT ATTEMPT INSTALLATION.

**PLEASE READ THE ENTIRE INSTRUCTION SHEET
BEFORE STARTING INSTALLATION**

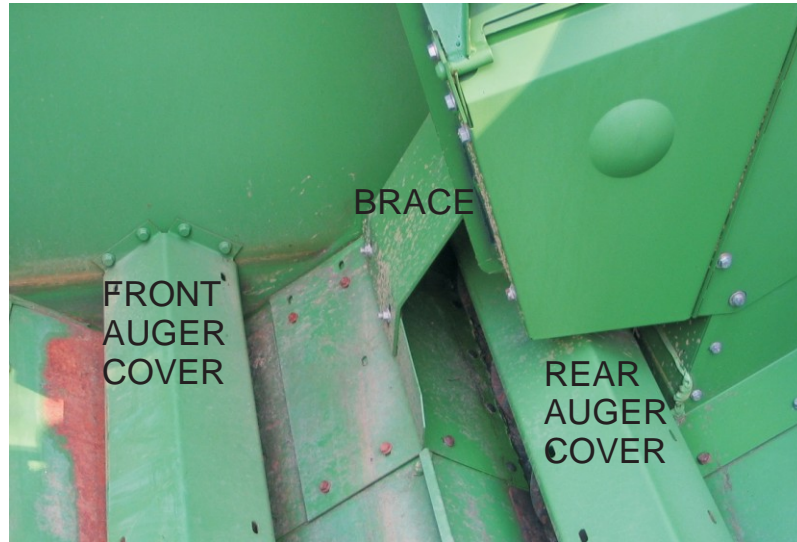
THE TERMS “LEFT”, “RIGHT”, “FRONT”, and “REAR” ARE DETERMINED BY FACING IN THE DIRECTION THE COMBINE WILL TRAVEL WHEN IN USE.

**PLEASE REFER TO THE OPERATORS MANUAL FOR YOUR
SPECIFIC COMBINE FOR PERTINENT SAFETY PRECAUTIONS**

1. Compare the contents with the enclosed “PACKING SLIP” to confirm.



2. Remove the front auger cover; it may be necessary to remove the drive shaft cover on the left. Next, remove the clean grain elevator brace and then the rear auger cover.

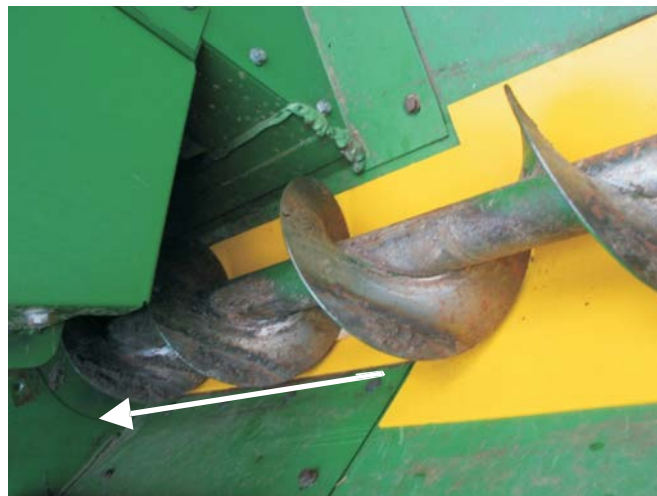


YOU DO NOT NEED TO REMOVE THE AUGERS

3. Thoroughly clean each auger trough to remove all grain, dust and crop residue.



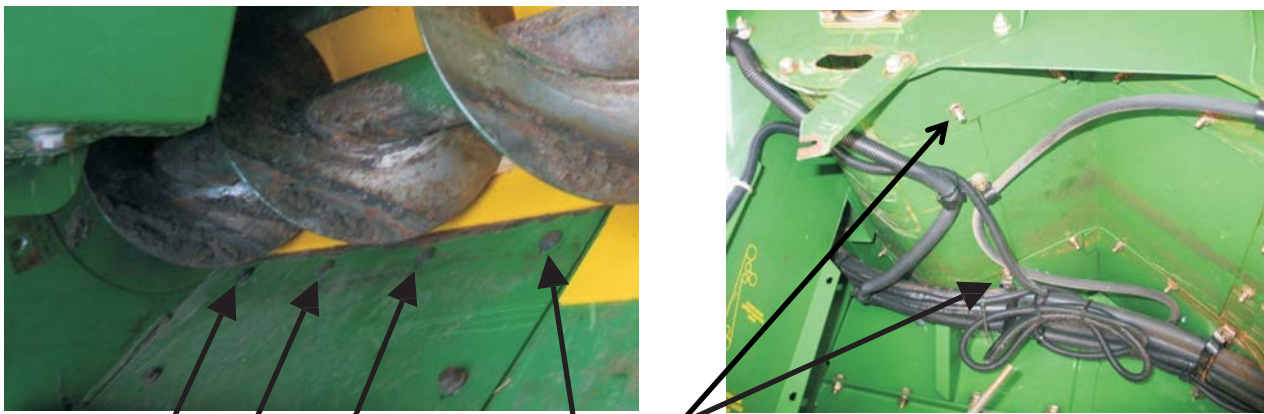
4. starting with the rear (Upper) auger, insert the poly liner under the auger. Slide the liner to the right until it makes contact with the vertical wall of the tank.



5. Wedge the liner down using the wooden wedges supplied being sure the liner is centered under the auger along the entire length.



6. Remove two carriage bolts as pictured below from the underside of the auger trough. Loosen the two outer bolts as shown below.



Loosen Only Remove Loosen Only

7. Install the stainless strip labeled AGTJHDUFR96 as shown below. Tighten bolts being sure the liner remains centered.



WHEN DRILLING BE CAREFUL TO AVOID HYDRAULIC LINES AND WIRING HARNESSSES

8. Locate the 21 3/4" long stainless part labeled AGTJHDURR9650 & position part as shown below. Drill through one of the 4 holes using the 13/64 drill bit provided; then rivet. Note: Drill and rivet each hole before moving on to the next hole.



Two types of fasteners have been supplies to secure the metal hold down strips. The choice of fastener used depends upon your personal preference and/or the tools you have available.

- (1) SELF-DRILLING SCREW: High quality fastener with undercut head to minimize strip out and vibration loosening. Requires screw gun with adjustable clutch set at proper torque.
- (2) STEEL RIVET: Not as fast and convenient as the self-drilling screw. The rivet is recommended as first choice for its greater strength and reliability. Requires Pre-Drilling the hole and a rivet gun capable of installing 3/16" steel rivet with steel mandrel.

**IF YOU CHOOSE TO USE THE SELF DRILLING SCREWS - DO NOT OVER TORQUE
ADJUST CLUTCH TO MINIMUM TORQUE REQUIRED TO FULLY SEAT SCREWS**

9. Fastening rivet with pneumatic rivet gun.



10. Locate the 75 5/8" long stainless steel part # [AGTJHD7562](#) and place it at the rear of the tank as shown below. Be sure to overlap the poly liner about 5/8".

Holding the stainless straight and in the proper position; drill and rivet each hole working from one end to the other one hole at a time.



11. Install the 78 5/8" long stainless part # [AGTJHD7838](#) on the front left of the upper trough to complete the upper liner.

12. To install the front (Lower) liner refer back to steps 4 thru 7 and 10 thru 11 with the exception of the stainless along the front of the lower trough uses part # [AGTJHDUR96](#) A 97 5/8" long hold down strip. See Pictures Below.

HAVE QUESTIONS OR NEED HELP CALL 1-800-542-7659



AGTJK006_25JUN15
Copyright© 2015 Poly Tech Industries, Inc.