



2012, 1 of 3 – 2011 & 2010 Freightliner Columbia

rb RITCHIE BROS.
Auctioneers®

Grants Pass, OR

October 26, 2017 (Thursday)

Unreserved public auction



Caterpillar 140G



1 of 2 – Caterpillar 518 w/Esco



Mack RWS788LST



Cozad 35 Ton



Caterpillar D6N XL

Grants Pass, OR

October 26, 2017

Thursday 9:00 am

Phone: **541.846.1820**

Fax: 541.846.1829

Auction location: 12310 Williams Highway,
Grants Pass, OR 97527

350+ items & counting

Bid in person or online

On-site registration starts: **Oct 24 (Tue)**

Items must be removed by: **Nov 9 (Thu)**



Rogue Valley
International-Medford
Airport

238

Williams Hwy

Water Gap Rd

Auction Site

Car rentals

Take advantage of exclusive rental car discounts.

AVIS code: C039702 | **Budget code:** A062002

Auction highlights

A complete dispersal for:

John R Wood Truking Inc.

and equipment from other owners.

Visit rbauction.com for complete auction information



Full equipment listings, more photos and detailed equipment information



New additions to each auction – items added daily!



Deposit and payment information, including financing, wire transfer accounts and taxes



Full auction schedule, with times and lot numbers



Maps, hotels and other local services

Auction notes

- ▶ Every item is sold 'as is, where is'
- ▶ International and online bidders – you may need to place a refundable deposit before you bid – check the auction details on our website for more information
- ▶ An administrative fee will be charged on every lot purchased: 2.5% on lots selling for more than \$2,500, up to a maximum of \$950 per lot; 10% on lots selling for \$2,500 or less.

Directions to auction site

From Rogue Valley International-Medford Airport, Head North on Terminal Loop Parkway toward Airport Rd. Turn left on Biddle Rd and travel for 0.8 miles. Merge onto OR-62W and continue onto Rossanley Dr. Continue on OR-238 W for 5.0 miles and turn right onto OR-238/ E California St. Continue to follow OR-238 W for 21 miles then turn left on Water Gap Rd. The auction site will be on the left hand side.

Still accepting equipment
for this auction.



Caterpillar D8H



1 of 2 – Komatsu D65E-6 w/Esco



Fiatallis 745



Caterpillar 977K



Timbco T425B



Haun HTL300F



Caterpillar 235LC



Washington 7840



John Deere 540AB



International 4300



Kenworth W900A



Peterbilt 359S



Freightliner D120064ST



1 of 2 – International 9400I



Kenworth T800



1 of 2 – Peterbilt 357



Kenworth W900



Kenworth T800 3000 Gallon



Chevrolet 5500



Qty of Antique Trucks



1 of 3 – Ford F250 4x4



1976 Lincoln Continental Mark IV



1948 Farmall H



1948 Ford 8N



Ford 8000 w/753



New Holland 1720



Hesston 4790 3x4



1 of 3 – 2010 New Holland BB9080 3x4



1 of 2 – New Holland 595 3x4



New Holland 590 3x4



2008 New Holland 580



New Holland 505



Challenger SP115B



Unused – 2013 Woods DHM7 7 Ft



Unused – 2015 Fella-Werke SM168



Unused – 2015 Krone Easy Cut 280



Freeman 5400



2014 Allen 8803



Allen 8827



Unused - 2015 H&S HM7A



1 of 3 - John Deere 3970



Unused - 2014 New Holland H5980



Unused - New Holland 216



Unused - 2015 New Holland 815TL



Qty of Shop Tools



Qty of Shop Tools

Reminder: Don't wait until...
 Opened at 9:25 AM:
 2013 Cat 349EL Track Excavator KS 876880 Bidding closes in: 2 min, 37 sec* (extended) Highest bid US \$152,000 Bid US \$153,000 54 bids
 2013 Kenworth T660 Bidding closes in: 2 min, 37 sec* (extended) Highest bid US \$35,000 36 bids
 Opened at 9:30 AM:
 Terex T560 Hydraulic Truck Crane TX 755918 Bidding closes in: 1 min, 37 sec* (extended) Highest bid US \$154,000 Bid US \$156,000 36 bids
 2008 Prentice Winning bid US \$105,460
 Opened at 9:35 AM:
 2008 Cat 12M Motor Grader AZ 863858 Bidding closes in: 3 min, 37 seconds* Highest bid US \$61,000 Bid US \$62,000 21 bids
 2012 Cat Bidding closes in: 3 min, 37 seconds* Highest bid US \$71,150
 2011 International 4300 Cab & Chassis NC 876883 Bidding closes in: 3 min, 37 seconds* Highest bid US \$11,500 Bid US \$12,000 3 bids
 2013 Kenworth Bidding closes in: 3 min, 37 seconds* Highest bid US \$2,190

Explore More Equipment

Check IronPlanet's weekly online equipment auctions
ironplanet.com

IRON PLANET

Equipment listings

Construction

CRAWLER TRACTORS: Caterpillar D8H • Caterpillar D7E • Caterpillar D6N XL • Caterpillar D6C.

WHEEL LOADERS: Fiatallis 745 • Mitsubishi WS500A.

CRAWLER LOADERS: Caterpillar 977K.

MOTOR GRADERS: Caterpillar 140G • Caterpillar 12F.

MOTOR SCRAPERS: Caterpillar 442B.

HYDRAULIC EXCAVATORS: Caterpillar 225.

MOBILE EXCAVATORS: Gradall G660C.

MINI EXCAVATORS: Bobcat 337D.

TRENCHERS: Ditch Witch 4010DD 4x4x4 Ride On.

LOADER BACKHOES: John Deere 310G.

HYDRAULIC TRUCK CRANES: Koehring MCH300.

CONVENTIONAL TRUCK CRANES: Lorain Moto-Crane 8x4x4.

VIBRATORY SMOOTH DRUM ROLLERS: Ingersoll-Rand SP54.

ROLLERS: Rosco Vibro-Stat III Static.

TOW BEHIND ROLLERS: Sheepsfoot Compactor.

PICK-UP MACHINES: Athey Ride On Asphalt.

Logging

PROCESSORS: CTR CTR421A Skid Mounted • Haun Machiney HTL300F Portable 3/Axle • Timbco T425B Crawler.

LOG LOADERS: Barko 4500 6x4 • Barko 450 6x4 • Caterpillar 235 • Caterpillar 225 LC • Prentice SC2264 6x4 • Prentice 6x4.

YARDERS: Washington 7840 Skyloc Swing • Washington WC6310D 6x4 Rubber-Tired Swing.

SKIDDERS: 2- Caterpillar 518 w/Esco • John Deere 540AB • Komatsu D65E-6.

LOGGING EQUIPMENT: Custombuilt Pull Type Arch • 3- Pacific Car & Foundry Pull Type Arch • Timbco Feller Buncher Processing Head • 92 In. Grapple • 84 In. Grapple • 36 In. Feller Buncher • Qty of Bunks.

ENVIRONMENTAL EQUIPMENT: Gallion T600BCC 6x4 Brush Cutter.

LOG TRUCKS: International 4300 T/A • Kenworth W900A T/A • Mack RWS788LST Tri/A Self-Loading • Peterbilt 359S T/A.

12- LOG TRAILERS & RIGGING: General FWC1080 T/A • General AST105 T/A • General AST104 T/A • General AST101 T/A • General T/A • Miller LD300 T/A • Pierce 2/Axle • DAL3581 T/A • 40 Ft T/A • 3- T/A.

Trucks & trailers

19- TRUCK TRACTORS: Freightliner D120064ST Sleeper T/A • 2012, 3- 2011, 2010, 2009 & 2008 Freightliner Columbia Sleeper T/A • International DF400114 T/A • 2- International 9400I Sleeper T/A • International 9400 Sleeper T/A • International 9400 T/A • Kenworth T800 Tri/A • Kenworth COE Sleeper T/A • Mack MH613 COE T/A • Peterbilt 359KP Sleeper T/A • 2- Peterbilt 357 T/A.

DUMP TRUCKS: International DF402 T/A • International R192A S/A • Kenworth W900 T/A.

WATER TRUCKS: Kenworth 3000 Gallon T/A.

TANK TRUCKS: Chevrolet 4112 1450 Gallon 4x4 • GMC C7500 Propane • International KBS7 950 Gallon • Reo F203B Fuel • Studebaker M16-28 800 Gallon S/A Fuel.

FUEL & LUBE TRUCKS: Ford F600 • International RF192A T/A • Kenworth.

SERVICE TRUCKS: Ford F650 XLT Crew Cab • Ford F600.

UTILITY TRUCKS: 3- Ford F450 XLT Crew Cab 4x4 • Ford F450 4x4 • Ford F450.

CAB & CHASSIS TRUCKS: Chevrolet C50 Viking • Ford F600 • GMC 3503 • GMC 370 • International L184.

FLATBED TRUCKS: Chevrolet 5500 • Chevrolet C60 • Chevrolet • Dodge C1D8126 • Ford F350 • Mack RS773L T/A.

11- PICKUPS: Chevrolet 2500HD Crew Cab 4x4 • Chevrolet 20 Custom 4x4 • Ford F250 XLT Lariat Extended Cab 4x4 • Ford F250 Custom 4x4 • 4- Ford F250 4x4 • GMC 25 Sierra Grande 4x4 • 2014 Nissan Frontier Crew Cab 4x4 • Nissan Extended Cab.

AUTOMOBILES: Cadillac Eldorado • Lincoln Town Car • 1976 Lincoln Continental Mark IV • Volkswagen Beetle I300.

LOWBOYS: Cozad 35 Ton T/A.

JEeps: Cozad • Custombuilt S/A Dolly • Peerless Booster.

10- HIBOYS: Brown 40 Ft x 96 In. T/A • Comet 45 Ft x 96 In. T/A Spread Axle • Fontaine 48 Ft x 102 In. T/A Spread Axle • Fruehauf PFT240 40 Ft x 96 In. T/A • Transcraft Eagle 48 Ft x 96 In. T/A Spread Axle • Transcraft Eagle 45 Ft x 96 In. T/A Spread Axle • Transcraft TH40 40 Ft x 96 In. T/A • Utility 48 Ft x 102 In. T/A Spread Axle • Utility SWWX12H 40 Ft x 96 In. T/A • Western 48 Ft x 96 In. T/A Spread Axle.

BOTTOM DUMP TRAILERS: Marquez 26 Ft T/A • Marquez 20 Ft T/A • Peerless HSS46774 28 Ft T/A.

END DUMP TRAILERS: Williamsen ADT26C 26 Ft T/A Frameless • 36 Ft T/A Frameless.

REEFER TRAILERS: 48 Ft T/A.

VAN TRAILERS: Brown 40 Ft T/A • Brown 40DV2D5H2 40 Ft T/A • Great Dane 711TL45 45 Ft T/A • Great Dane 711TL4410 44 Ft T/A • Hobbs Ranger IR 48 Ft T/A • Trailmobile 24 Ft S/A.

TANK TRAILERS: Custombuilt 400 Gallon S/A • Custombuilt 250 Gallon S/A • Peerless PT34TS 7500 Gallon T/A • Trailmobile T/A.

EQUIPMENT TRAILERS: Custombuilt T/A • Hyster R25TL 25 Ton Gooseneck • Miller T/A • Page B1214 T/A Tilt Deck.

CONTAINER CHASSIS: Dorsey CDGT206 28 Ft T/A.

Agriculture

MFWD AGRICULTURAL TRACTORS: 2- New Holland 7740 • 2015 New Holland T475.

2WD AGRICULTURAL TRACTORS: Ford 9600.

ANIQUE TRACTORS: 1967 Case G340 2WD • 1948 Farmall H • 1950 & 1948 Ford 8N • 1964 John Deere 3020 • 1962 John Deere 2010 • 1952 John Deere 60.

UTILITY TRACTORS: Ford 8000 • New Holland 1720.

17- BALERS: Freeman 370T • Hesston 4790 3x4 • 2008 Krone BP1290 • 3- 2010 New Holland BB9080 3x4 • New Holland BB960ST • 2- New Holland 595 3x4 • New Holland 590 3x3 • 2008 New Holland 580 • New Holland 580 • New Holland 505 • 2014 & 3- 2013 New Holland 340 3x4.

SWATHERS & WINDOWERS: Case IH 8840 • 2009 Case IH WD1903 • Challenger SP115B • Hesston 9260 • Hesston 8400 • Massey Ferguson 9635 • 2009 New Holland H8040 • New Holland 1495 • New Holland HW340.

CULTIVATORS: Glenco 30 Ft • Unused - 2015 Rankin RSC4 4 Ft 3 Point.

DISCS: Unused - 2013 Woods DHM7 7 Ft.

BREAKING EQUIPMENT: Maschio 300 Rotovator.

HAY CUTTING EQUIPMENT: Unused - 2015 Fella-Werke SM168 Disc 3 Pt Hitch Disc Mower • Unused - 2015 Krone Easy Cut 280 3 Pt Hitch Disc Mower • 2009 Massey Ferguson 1474 14 Ft Mower Conditioner • 2013 New Holland H7450 13 Ft Disc Mower • 2009 New Holland 1475 14 Ft Mower Conditioner • Unused - Tenutti 6 Ft Disc Mower.

MOWERS: Unused - 2012 New Holland 272GMS 72 In. Mid Mount • Unused - 2014 Woods BB600 60 In. • Unused - 2015 Woods RC4 48 In.

FORAGE HARVESTERS: 3- John Deere 3970.

HAYING EQUIPMENT: Allen 8827 Twin Rake • 2014 Allen 8803 Twin Rake • Freeman 5400 Bale Wagon • Unused - 2016 H&S AR2112 12 Wheel Rake • 2- Unused - 2015 H&S AR1261 12 Wheel Rake • Unused - 2015 H&S HM7A Tedder • Unused - 2016 Krone Swadro 38 Rake • 2014 New Holland H5980 17 Wheel Rake • 2014 New Holland PT3417 Tedder • 2016 New Holland

ProCart 1225 12 Wheel Rake • Unused - 2015 New Holland 216 Twin Rake • 2014 Sitrex PRO17 17 Wheel Rake.

AGRICULTURAL EQUIPMENT: 10 Ft Pull Type Shanks • 9 Ft Pull Type Shanks • 2- 6 Ft Pull Type Shanks • Pull Type Shanks.

LANDSCAPE EQUIPMENT: Unused - 2013 Woods SU172BT 72 In. Pulverizer.

Other items of interest

TELESCOPIC FORKLIFTS: 2009 Bobcat V417 4000 Lb 4x4.

FORKLIFTS: Caterpillar V60B 6000 Lb • Eagle-Picher R80 • Gerlinger PH862 16000 Lb • Hyster 15000 Lb • Hyster S608 6150 Lb • Hyster M300H • Hyster M300H Straddle Truck • Hyster 300 Straddle Truck • Hyster H150E 15000 Lb.

SCISSORLIFTS: JLG 2646EZ Electric.

BOOM LIFTS: Genie Z45/22 • JLG 80HX.

BROOMS: Sweepster H96 • Tow Behind.

UTILITY VEHICLES: 2009 Kawasaki Mule.

RECREATIONAL VEHICLES: Dodge Apollo 2900 DB 29 Ft Motor Home • Suzuki 4x4 All Terrain Vehicle • Qty of Snowmobiles.

PLEASURE CRAFT: Custombuilt 14 Ft Air Boat.

AIR COMPRESSORS: Chicago Pneumatic 85 CFM Portable • Ingersoll-Rand 900 Portable • 2- Ingersoll-Rand 185 CFM Portable • Worthington 9183 Portable.

LIGHT GENERATOR SETS: Caterpillar XQ225 205 KW Portable • Generac • International U2 Portable • Onan 16 KW Portable • 90 KW • 2- 60 KW Skid Mounted.

PUMPS: Gorman-Rupp 6 In. Portable.

TANKS: 10000 Gallon Skid Mounted Fuel • 10000 Gallon Skid Mounted • 1250 Gallon Skid Mounted Water • 250 Gallon Water • Qty of Fish Tanks • Qty of Tanks.

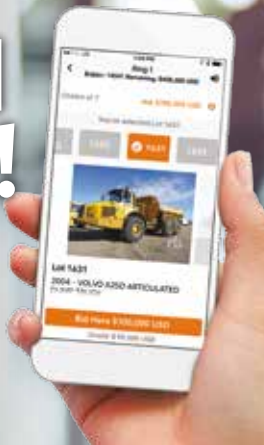
INDUSTRIAL PLANT EQUIPMENT: Lincoln Pro Cut 60 Plasma Cutter • Qty of Shop Tools.

CRANE ACCESSORIES: 48 In. Dragline Bucket • 36 In. Clam Bucket • Qty of 2 Sheave Blocks • Qty of Drop Hammers • Qty of Rigging • Qty of Spreader Bars.

TRACTOR ATTACHMENTS: 2015 New Holland 815TL Loader • Unused - 2015 New Holland 110TL Loader • New Holland 84LB Loader • Unused - 2013 Woods LR72 72 In. Landscape Rake Loader • Unused - 2014 Woods RBS60P 60 In. 3 Pt Blade.

ITEMS INCLUDE: Equipment Attachments • Truck Attachments • Industrial Items • Equipment Parts • Shop & Warehouse Items.

BID & BUY ON THE GO!



Download the Ritchie Bros. app today.

rbauction.com/app



PurchaseFlex™
Financing

No payments
for 120 days*
& \$0 down

or

LeaseFlex™

Lowest
possible
monthly
payments

Apply today – call 1.855.331.7237 or visit

rbauction.com/Flex

* Terms and conditions apply

rb RITCHE BROS.
Financial Services

More equipment added daily!

Upcoming auctions around the world

USA

Wasilla, AK	Oct 7
Minot, SD	Oct 10
Fort Pierre, SD	Oct 12
Chehalis, WA	Oct 20
North East, MD	Oct 24
Wasilla, AK	Oct 25
Grants Pass, OR	*Oct 26
Des Moines, IA	Oct 27
Minot, SD	Nov 7–8
Houston, TX	Nov 8–9
Bozeman, MT	Nov 9
Phoenix, AZ	Nov 15
Orlando, FL	Nov 16

Canada

Grande Prairie, AB	Oct 4–5
Winnipeg, MB	*Oct 5
Chilliwack, BC	Oct 11
Saskatoon, SK	Oct 17
Edmonton, AB	Oct 24–26

International

Caorso, ITA	Oct 5
Buehl, DEU	Oct 12
Narita, JPN	Oct 24
Tampere, Fin	Oct 25
Wangara, AUS	Oct 31

* NOTE NEW DATE



2 of 4 – Late Model New Holland 340 3x4



2009 Case IH WD1903



1 of 3 – Unused – Late Model H&S AR1261



2013 New Holland H7450 13 Ft



2009 Bobcat V417 4000 Lb 4x4x4



1 of 2 – New Holland 7740



John Deere 310G

» See complete and up-to-date listings for this auction at rbauction.com

Grants Pass, OR | October 26, 2017 (Thursday)

rbauction.com

rb RITCHE BROS.
Auctioneers®