

2005 TRAVEL TRAILERS AND FIFTH WHEELS

# Dutchmen



YEAR AFTER YEAR...THE VALUE LEADER





# Dutchmen

***GREAT Name!***

***GREAT Floorplans! GREAT Value!***

Year after year, Dutchmen is a best selling brand because of our commitment to high quality and value. We remain focused on providing innovative products that are loaded with standard equipment and unique features. That's why Dutchmen products offer more value for your dollar than any other recreational vehicle. Plus, Dutchmen's attention to detail in design and construction is why our customer's return when it is time for their next recreational vehicle.

Year after year, the value leader...Dutchmen.

**DUTCHMEN...THE VALUE LEADER**

***On the cover: Dutchmen 31K-DSL with Classic Package graphics***



***Our 48" x 29" dinette window is one of the largest in the industry. It provides panoramic views of the great outdoors. Plus, it includes a slider window to let the fresh air in. Don't settle for the competitors smaller windows!***



***Our composite sink is larger and deeper than most and includes a high-rise designer faucet.***



**This over-sized 22" oven with 3-burner range is part of the Comfort Package.**



**Dutchmen's "Extend-a-Galley" countertop extension gives you more room to prepare the family meal. It stores under the bed when not in use. (Optional on most DSL floorplans)**



Large kitchens with an abundance of countertop and storage space are found on all Dutchmen floorplans. A double door refrigerator, large microwave and large double bowl sink are just some of the standard features you get with Dutchmen.

**Dutchmen features "RV 800" residential steel roller drawer glides. They open and close with ease and are designed for years of reliable use.**



## YEAR AFTER YEAR...THE VALUE LEADER

**Our wider, 44" "Dinette Plus" seats four adults comfortably. The hinged seats, storage door on the seat base, and exterior door permit easy access to your cargo. Plus, large overhead cabinets are a standard feature on Dutchmen floorplans with slide rooms. The optional AM/FM/CD stereo system and speakers are integrated into the slideout overhead cabinets.**



**Dutchmen's standard double door refrigerator/freezer is available with a raised panel hardwood insert. (Part of the Classic Package)**

**31K-DSL "Dinette Plus" with Classic Package**





***Storage, Storage  
and More Storage!***



***Overhead cabinets with storage shelf below, shirt closets with mirrored doors, night stands and a lift-up bed with storage below are standard features in Dutchmen bedrooms.  
30B-DSL Bedroom shown***

***Dutchmen bathrooms are large and functional. ABS shower surround and a 12V exhaust fan are standard on all models. Plus, neo-angle shower floorplans include a glass shower door - standard.***

# ***Dutchmen***



***A 14" x 14" skylight roof vent with 12V fan is standard in all Dutchmen bathrooms.***



***A skylight over the tub or shower increases headroom and adds light to your bathroom.  
(Included in the Comfort Package)***



***Our 6 gallon water heater features direct spark ignition (DSI) for easy lighting.  
(Included in the Comfort Package)***



## ***Fold-n-Go Bunk System***

Here's a new feature – bunk beds that fold up against the wall to create a storage room in the 30 BH-DSL Travel Trailer floorplan. An extra 180 cubic feet of storage is created when the bunks are not in use. Add the optional Pac-n-Play door to the exterior for quick access to all of your camping equipment.



## ***Pac-n-Play Storage***



Pac-n-Play storage is available on bunk house floorplans. The Pac-n-Play provides more storage for cargo. The lower bunk fold up to create a large storage area that's accessible from the exterior door. It's large enough for coolers, bikes, grills, golf clubs and more. (Optional)



## ***Stor-More Rear Garage***

Need more storage space? Choose a floorplan with the "Stor-More" rear garage.

## **DÉCOR OPTIONS**

**A = Feature Fabric**  
**B = Chairs and Dinette Seats**  
**C = Sofa and Chairs in Howland Taupe**

**\*Howland Taupe available on DSL Travel Trailers and all Fifth Wheel floorplans.**





**Tote-n-Tray Storage – An Industry First!**

Located in your travel trailer's "Storage Plus" compartment, the innovative Tote-n-Tray system maximizes storage for your family. The storage system is mounted to the top of your compartment and includes two large storage tubs that are suspended from the slide out tray. Plus, the optional tray doubles as a counter top. (Optional) Dutchmen – Leading the Way in Innovation.



Our aerodynamic front profile is protected with diamond plate on our travel trailers. Diamond plate protects your investment from damage caused by the hazards of the road.



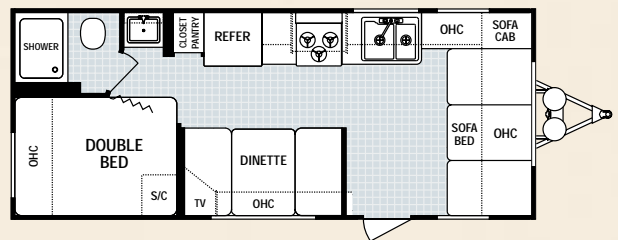
Dutchmen features E-Z Lube hubs with 15" tires. E-Z Lube hubs make wheel bearing maintenance a snap.

COMPARE THESE FEATURES TO THE COMPETITION. WE ARE

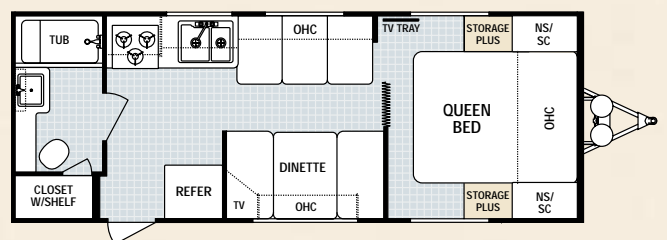


**Dutchmen Lite Travel Trailers**

Aerodynamic and easy to tow, the Dutchmen Lite features non-slide and small slide floor plans ranging in size from 18' to 29'. Dutchmen Lite is loaded with all the features and equipment you will find in the rest of the Dutchmen product line. With many great floorplans available in a variety of sizes to meet your family's needs, Dutchmen Lite is your best choice for lightweight and easy to tow travel trailers.



18B Available option: P



24Q



**Dutchmen DSL travel trailers include triple entry steps on both doors as a standard feature. Plus, the main door is 30" wide**

**and has radius corners to prevent damage to your awning**



**Take your cooking outside with Dutchmen's exterior barbecue grill. (Optional)**



**Both Dutchmen Travel Trailers and Fifth Wheels are available with the optional spray and wash station, featuring hot and cold water and a retractable, quick disconnect hose with sprayer.**

## Dutchmen Value Packages

### COMFORT PACKAGE

The Comfort Package, available on all Dutchmen floorplans, offers all the equipment to enhance your camping experience.

- 13.5 BTU Roof Air Conditioning
- Microwave oven
- A&E patio awning
- 6 gallon quick recovery gas DSI water heater with bypass kit
- Skylight over tub
- AM/FM stereo with CD player
- Three burner range with 22" oven
- TV antenna with power booster and cable jack.
- Prewired for satellite

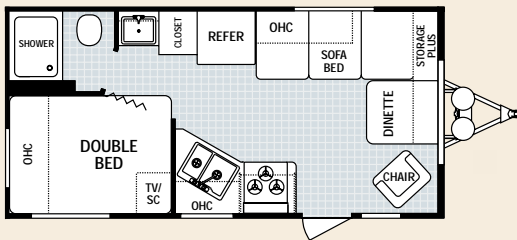
### CLASSIC PACKAGE

Upgrade your Dutchmen DSL large slide travel trailers and mid profile fifth wheel models with the Classic Package

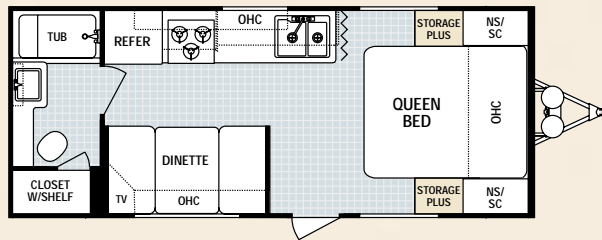
- Bedroom Carpet with pad
- Designer reading lights in bedroom
- Designer bedspread and headboard
- 2 pillows on queen bed
- Oak finish living room slide fascia
- Solid wood raised panel cabinet doors
- 30" radius entry door (most floor plans)
- Decorator lighting
- Slider windows on sides of slide
- Solid wood raised panel refer front
- Upgraded high-rise galley faucet
- Dual cabinet doors in dinette
- Phone Jack/Data port
- Upgraded graphics package
- Hitch light
- Exterior storage light
- Dual sink covers and stove cover
- Night shades

*\* See dealer for available options*

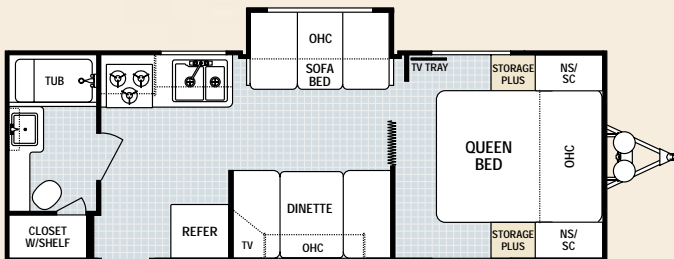
**SURE YOU'LL AGREE - DUTCHMEN IS THE VALUE LEADER.**



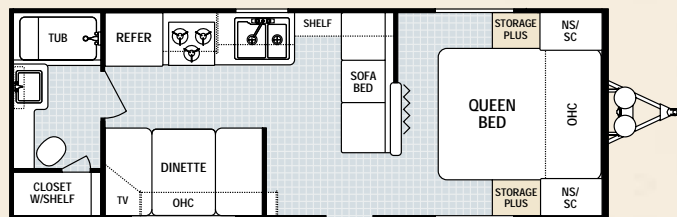
19F Available option: P



20F

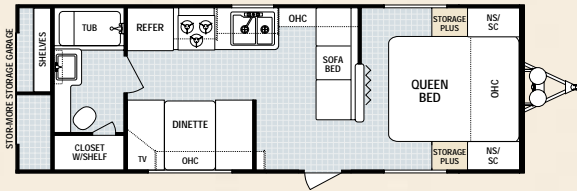


24Q-SSL

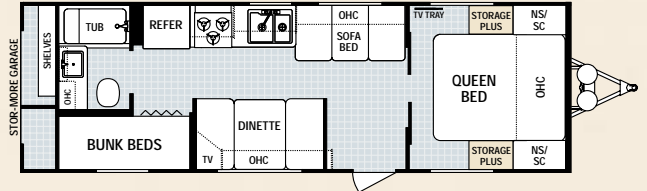


25F

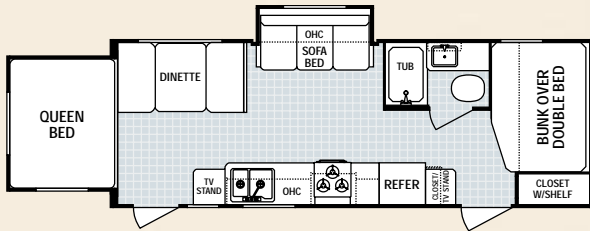
# DUTCHMEN LITE TRAVEL TRAILERS



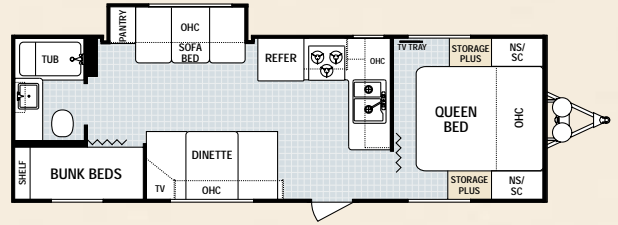
25G



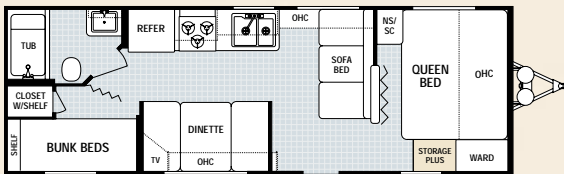
27G Available option: T



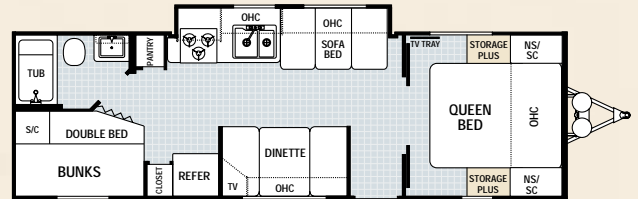
25R-SSL



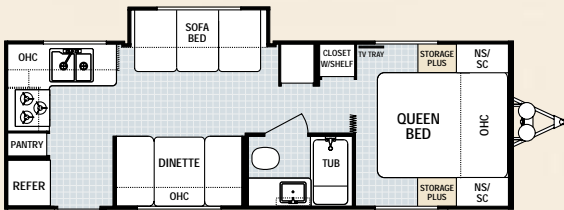
28B-SSL Available option: T



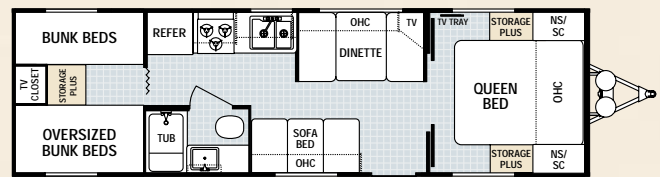
26B Available options: P, T



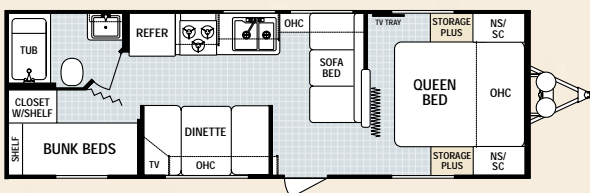
28G-SL Available option: B, T



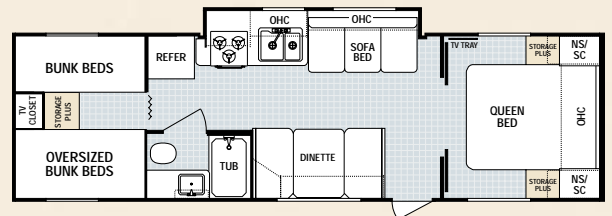
26Q-SSL



29Q Available option: J, T



27B Available options: B, P, T



29Q-GS

## DUTCHMEN LITE TRAVEL TRAILERS

Model	18B	19F	20F	24Q	24Q-SSL	25F	25G	25R-SSL	26B	26Q-SSL	27B	27G
Unloaded Vehicle Weight	4234	3990	4204	4405	4720	4348	4874	5418	4726	5220	5042	5100
Hitch Dry Weight	646	508	512	516	546	492	694	550	570	688	702	684
GVWR	7700	7700	7700	7700	7700	8400	7700	7700	7700	7700	7700	7700
Net Cargo Capacity	3466	3710	3496	3295	2980	4052	2826	2282	2974	2480	2658	2600
Length	23' 5"	20' 2"	23' 5"	26' 2"	27' 8"	25' 2"	27' 8"	26' 3"	27' 8"	27' 8"	28' 7"	29' 3"
Exterior Width	8'	8'	8'	8'	8'	8'	8'	8'	8'	8'	8'	8'
Exterior Height	10' 3"	10' 3"	10' 3"	10' 3"	10' 3"	10' 3"	10' 3"	10' 3"	10' 3"	10' 3"	10' 3"	10' 3"
Fresh Water Capacity	30	36	36	36	36	36	30	30	36	30	30	36
Grey Water Capacity	37	37	37	37	37	37	37	37	37	37/37	37	37
Black Water Capacity	37	37	37	37	37	37	37	37	37	37	37	37
Tire Size	■	■	■	■	■	■	■	■	■	■	■	■
Furnace Size (BTU's)	25000	20000	25000	25000	25000	20000	25000	25000	25000	25000	25000	30000

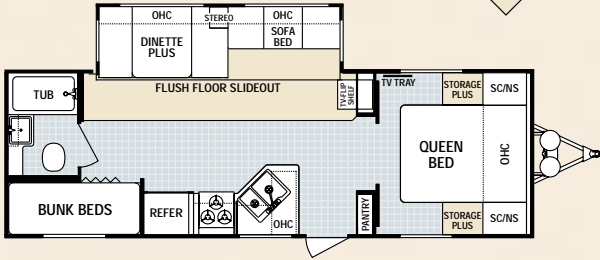
Tire Size: ■ = ST205/75D15(C)



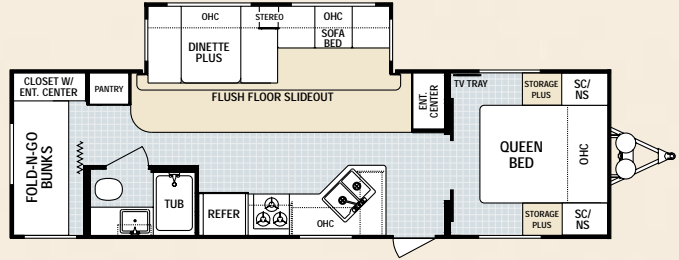
# LARGE SLIDE TRAVEL TRAILERS

 **CARPET**

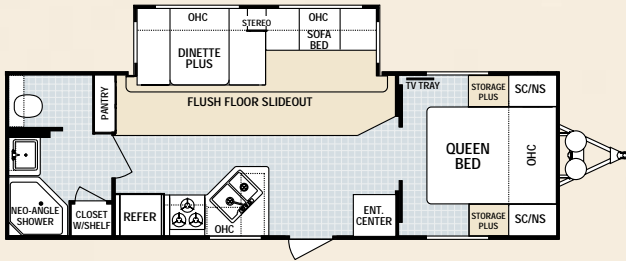
 **VINYL**



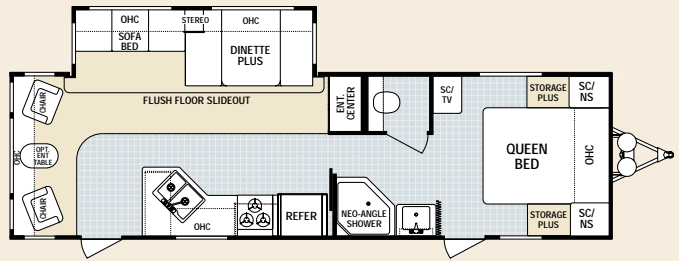
26B-DSL Available option: T



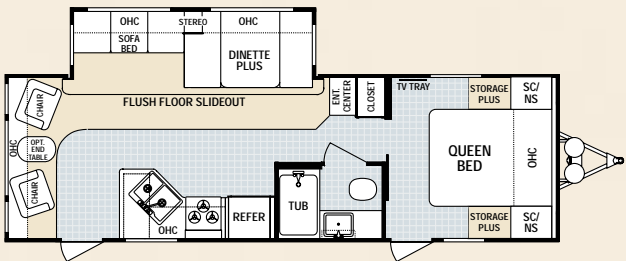
30B-DSL Available options: O, T



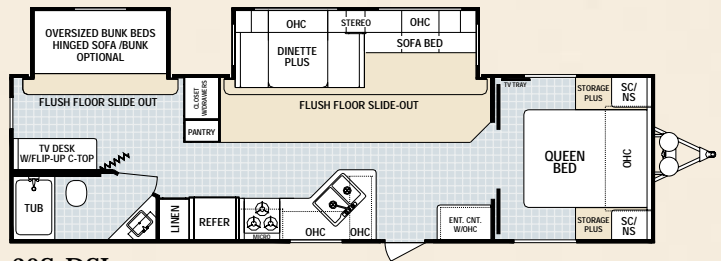
26F-DSL



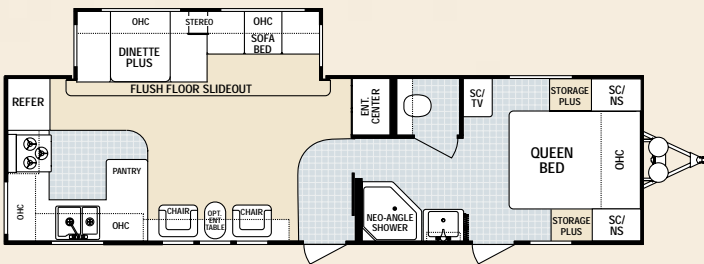
30L-DSL Available option: M



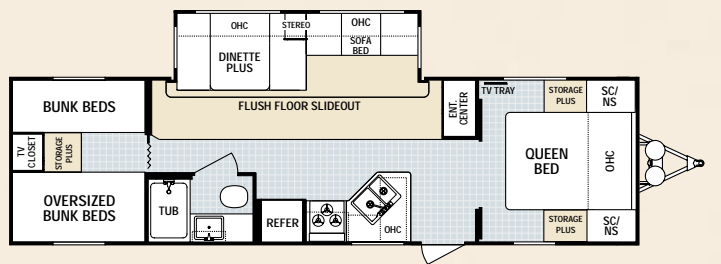
26L-DSL



30S-DSL



29R-DSL Available option: M



31B-DSL Available options: J, T

DUTCHMEN LITE TRAVEL TRAILERS					DUTCHMEN TRAVEL TRAILERS							
Model	28B-SSL	28G-SL	29Q	29Q-GS	26B-DSL	26L-DSL	26F-DSL	29R-DSL	30B-DSL	30L-DSL	30S-DSL	31B-DSL
Unloaded Vehicle Weight	5268	5632	5338	5840	6506	6840	6626	7528	7126	7126	7812	7134
Hitch Dry Weight	506	760	660	792	964	756	886	948	1146	828	974	1018
GVWR	7700	7700	7700	7700	9680	9680	9680	9680	9680	9680	9680	9680
Net Cargo Capacity	2432	2068	2362	1860	3174	2840	3034	2152	2554	2554	1868	2546
Length	29' 3"	30' 1"	31' 2"	31' 7"	28' 5"	29' 9"	29' 9"	33' 6"	31' 11"	32' 3"	33' 10"	33' 3"
Exterior Width	8'	8'	8'	8'	8'	8'	8'	8'	8'	8'	8'	8'
Exterior Height	10' 3"	10' 3"	11' 0"	10' 3"	11' 0"	11' 0"	11' 0"	11' 0"	11' 0"	11' 0"	11' 0"	11' 0"
Fresh Water Capacity	36	30	36	30	46	46	46	46	46	46	46	46
Grey Water Capacity	37	37	37	37	37	37	37	37/37	37	37	37/37	37
Black Water Capacity	37	37	37	37	37	37	37	37	37	37	37	37
Tire Size	■	■	■	■	●	●	●	●	●	●	●	●
Furnace Size (BTU's)	30000	30000	31000	30000	30000	30000	30000	34000	34000	34000	30000	34000

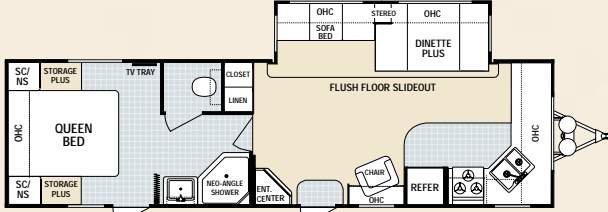
Tire Size: ■ = ST205/75D15(C)

● = ST225/75R15(D)

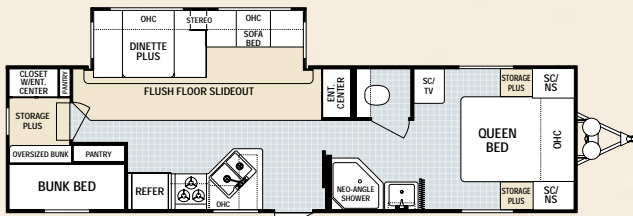
# DSL LARGE SLIDE TRAVEL TRAILERS

## Dutchmen DSL Travel Trailers and Mid Profile Fifth Wheels

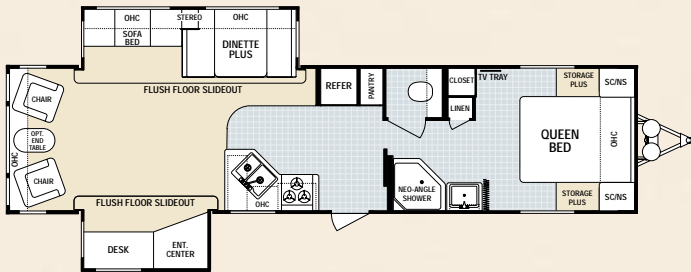
Innovative floorplans featuring large living areas and kitchens, oversized bath and bedrooms, and abundant storage define the 2005 Dutchmen travel trailers and mid profile fifth wheels. Dutchmen models feature large, flush floor slide rooms and are available in floorplans ranging from 24' to 38' feet.



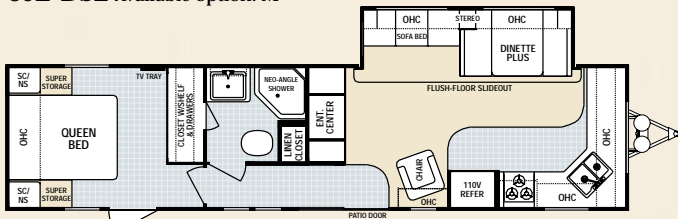
31F-DSL Available option: M (Rear)



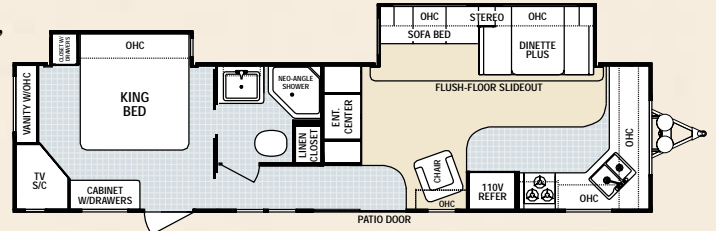
31K-DSL Available options: D, M, T



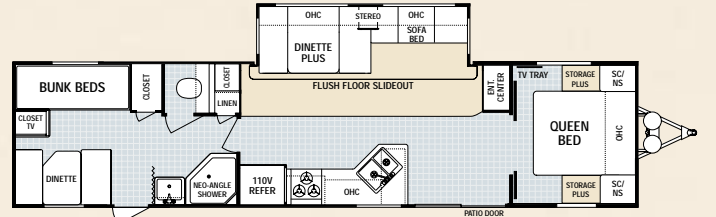
35E-DSL Available option: M



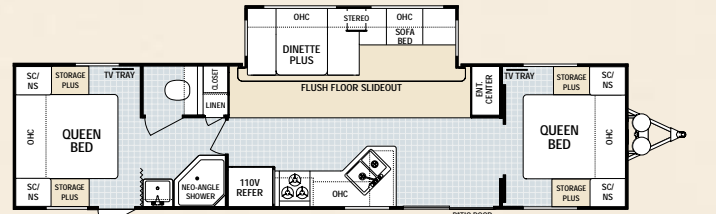
36F-DSL



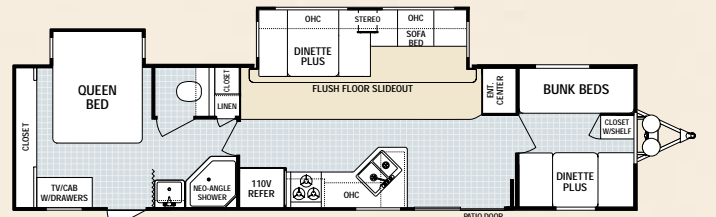
36F-DSL Available with optional rear queen or king bed slide suite (king shown)



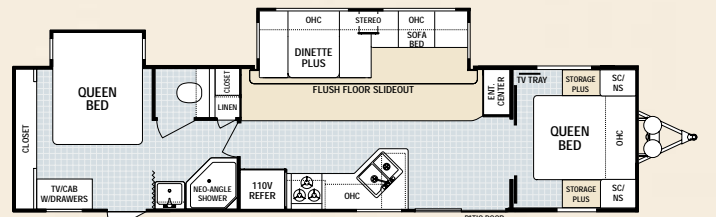
38B-DSL Shown with std. front queen, rear bunks and dinette  
Available option: T



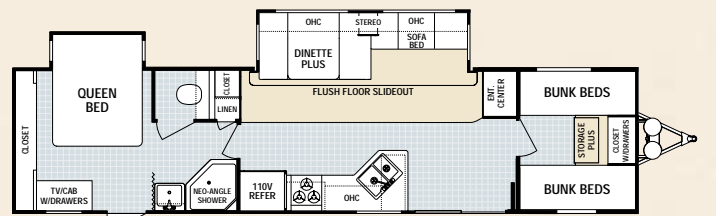
38B-DSL Shown with opt. L (rear queen) & std. queen front bed



38B-DSL Shown with option M (rear queen slide) & J (front bunks/dinette)  
Available option: T



38B-DSL Shown with option M (rear queen slide) & std. queen front bed



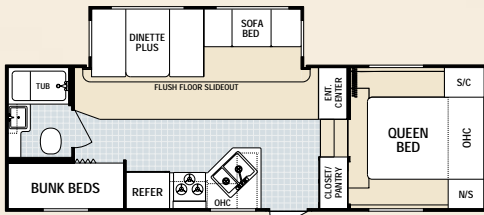
38B-DSL Shown with option M (rear queen slide) & N (front quad bunks)  
Available option: T

DUTCHMEN DSL TRAVEL TRAILERS					
Model	31F-DSL	31K-DSL	35E-DSL	36F-DSL	38B-DSL
Unloaded Vehicle Weight	7226	7498	8272	7964	8020
Hitch Dry Weight	1294	1048	1072	1240	1220
GVWR	9680	9680	11176	9680	11176
Net Cargo Capacity	2454	2182	2904	1716	3156
Length	33' 0"	34' 8"	37' 4"	37' 7"	39' 3"
Exterior Width	8'	8'	8'	8'	8'
Exterior Height	11' 0"	11' 0"	11' 0"	11' 0"	11' 0"
Fresh Water Capacity	46	46	46	46	46
Grey Water Capacity	37/37	37/37	37/37	37/37	37
Black Water Capacity	37	37	37	37	37
Tire Size	●	●	●	●	●
Furnace Size (BTU's)	34000	34000	34000	34000	34000
Tire Size: ● = ST225/75R15(D)					

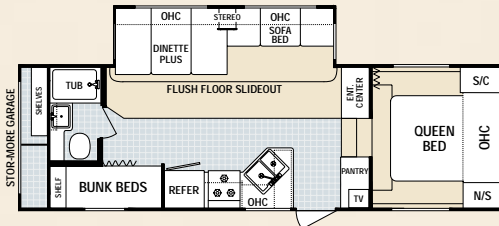
# MID PROFILE FIFTH WHEELS



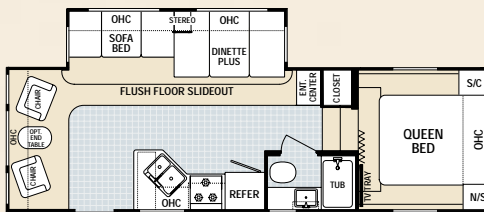
Shown with Classic Package graphics



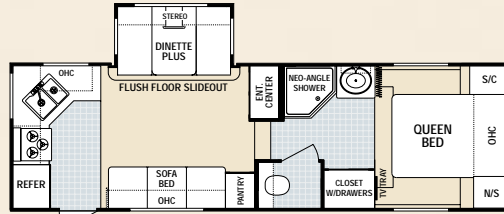
24B-M5



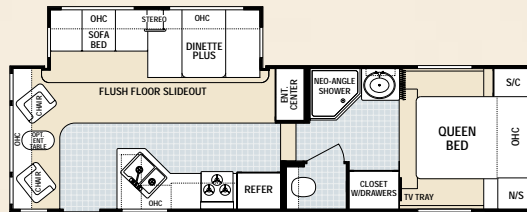
24G-M5



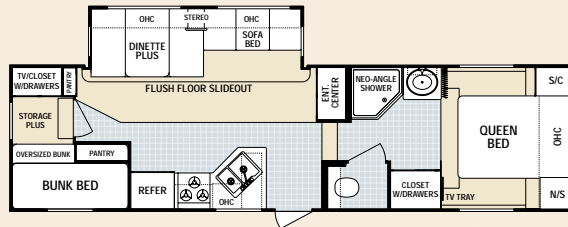
24L-M5



25R-M5 Available options: D, T

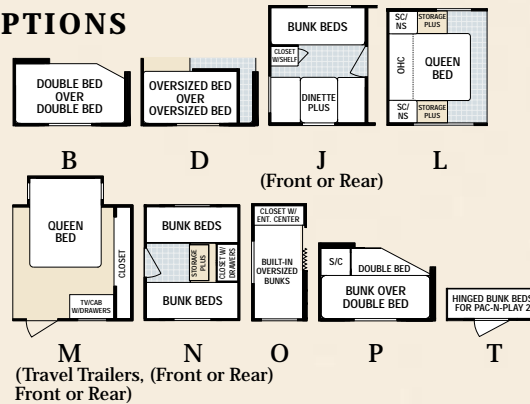


27L-M5



28B-M5

## FLOOR PLAN OPTIONS



DUTCHMEN MID-SIZE FIFTH WHEELS						
Model	24B-M5	24G-M5	24L-M5	25R-M5	27L-M5	28B-M5
Unloaded Vehicle Weight	6976	7278	6720	7222	7789	8208
Hitch Dry Weight	1164	1356	986	1108	1454	1314
GVWR	10560	10560	10560	10560	10560	10560
Net Cargo Capacity	3584	3282	3840	3338	2776	2352
Length	27' 10"	29' 0"	26' 1"	28' 7"	30' 3"	32' 6"
Exterior Width	8'	8'	8'	8'	8'	8'
Exterior Height	12' 2"	12' 2"	12' 2"	12' 2"	12' 2"	12' 2"
Fresh Water Capacity	46	46	46	46	46	46
Grey Water Capacity	37	37	37	37	37/37	37/37
Black Water Capacity	37	37	37	37	37	37
Tire Size	●	●	●	●	●	●
Furnace Size (BTU's)	30000	34000	30000	30000	34000	34000
Tire Size: ■ = ST205/75D15(C)      ● = ST225/75R15(D)						

Vehicle Loading - Every effort has been made to provide the greatest number of options for the recreation vehicle owner. Along with these choices comes the responsibility to manage the loads that are imposed by the choices so that they remain within the manufacturer's specified chassis weight limits. Do not overload the recreation vehicle.

Net carrying capacity (NCC) determined by subtracting unloaded vehicle weight (UWV) from gross vehicle weight (GVWR) and includes fluids, options and cargo. Liquid capacities and weights are approximations only.

Warning: This information is intended as a guide only. Weights of individual vehicles may vary. Consult your owner's manual for complete loading, weighing and towing instructions.

Product information, specifications, and photography in this brochure were as accurate as possible at time of printing. Photographs may contain some features that are optional on your vehicle. Since we continually strive to improve our products, actual products may differ. Prices and specifications are subject to change without notice. All capacities are approximate and dimensions are nominal. Some features shown are optional and may be different or unavailable in Canada.

Vehicles are designed for recreational use only and not intended for use as a primary residence.

# Dutchmen

## 2005 STANDARD FEATURES

	Non Slide, and Small Slide TT	Large Slide TT and M5 Fifth Wheels
<b>APPLIANCES &amp; ELECTRICAL</b>		
12 volt demand water pump	STD	STD
Safety equipment: Fire extinguisher, smoke/LP/CO detector	STD	STD
110 volt duplex receptacles interior and exterior	STD	STD
55 amp converter with built in battery charger	STD	STD
TV Tray in bedroom	STD	STD
Hydro flame forced air, DSI furnace with wall thermostat	STD	STD
<b>KITCHEN</b>		
Norcold double door gas/electric refrigerator	STD	STD
Range hood with 12 volt light and exhaust fan	STD	STD
Larger "Dinette Plus" eating areas	STD	STD
Double bowl composite sink with high rise faucet	STD	STD
Spice rack below sink	STD	STD
<b>BATH</b>		
ABS tub surround	STD	STD
Medicine cabinet with mirror	STD	STD
Shower curtain (Most models)	STD	STD
Glass shower door (Neo Angle Showers)	N/A	STD
12 volt power exhaust roof vent in bath	STD	STD
GFI protected 110 volt duplex receptacle	STD	STD
Thetford toilet	STD	STD
<b>MISC.</b>		
Lift-up bed platform with storage below	STD	STD
Slide-out overhead cabinets (living room slide only)	STD	STD
Oversized storage drawers with metal drawer guides	STD	STD
Mini-blinds throughout	STD	STD
Living room carpet (where possible)	OPT	STD
Designer valances	STD	STD
Brushed nickel cabinet door hardware	STD	STD
Décor globe light over dinette	STD	STD
Coat hooks	STD	STD
Residential tile-like linoleum	STD	STD

### CONSTRUCTION

	Non Slide, and Small Slide TT	Large Slide TT and M5 Fifth Wheels
I-beam cambered chassis	STD	STD
ALKO Leaf Spring Axle	STD	N/A
ALKO leaf spring axles with Ultra Lube feature	N/A	STD
Tandem axles with 4 wheel electric brakes	STD	STD
Large support outriggers w/solid continuous weld	STD	STD
5/8" exterior grade tongue & groove plywood floor	STD	STD
Double entry steps-welded to frame	STD	N/A
Triple entry steps-welded to frame	N/A	STD
Rear bumper with sewer hose storage	STD	STD
Track guided electric-powered flush floor living room slide-out	N/A	STD
Electric slide-out system	STD	STD
Rotocast holding tanks	STD	STD
Twin 30# LP bottles with cover	STD	STD
Aerodynamic front profile with diamond plate rock guard (TT's)	STD	STD
Fiberglass insulation-R7	STD	STD
Tinted radius clamp ring windows - Oversized dinette window	STD	STD
Rain gutter w/corner downspout	STD	STD
Flush combo entry latch/dead-bolt lock	STD	STD
Radius exterior "Storage Plus" compartments (where possible)	STD	STD
Detachable 30 amp power cord	N/A	STD
Patio light	STD	STD
1 piece seamless EPDM rubber roof (12 year rubber warranty)	STD	STD
Full walk-on roof with 5" trusses and 3/8" decking	STD	STD
Ducted air conditioning	STD	STD

*Product information, specifications, and photography in this brochure were as accurate as possible at time of printing. Photographs may contain some features that are optional on your vehicle. Since we continually strive to improve our products, actual products may differ. Prices and specifications are subject to change without notice. All capacities are approximate and dimensions are nominal. Some features shown are optional and may be different or unavailable in Canada.*

*Vehicles are designed for recreational use only and not intended for use as a primary residence.*

**\*See your Dutchmen Dealer for available options.**

## YEAR AFTER YEAR...THE VALUE LEADER



**THE INDUSTRY'S  
Best Warranty  
By Far!**

We're so confident in the design and construction of our products that they are covered by Thor's Limited Warranty program.\*

Your warranty includes:

- One Year Bumper to Hitch Limited Warranty
- Two Year Structural and Appliance Limited Warranty

\* See owner's manual for complete warranty details.



**Why A Thor  
Product Is Your  
Best RV Value:**

Thor Industries, Inc., listed on the New York Stock Exchange, proudly traces its history back over seventy years to the pioneering days of the RV industry with the founding of Airstream, the industry's oldest and most renowned brand. Our total commitment to quality and our philosophy of putting our customers first has led to our continuous growth. Today, Thor is the largest builder of RVs. Thor's strong financial condition and years of solid growth are your assurance that we will be here to serve you for years to come. We think this extra peace of mind is important when you are making a significant investment. Because our customers are always #1 with us, we work harder than other manufacturers to satisfy you.

©2004 Thor Industries, Inc.

DM1.1004

2164 Caragana Court ■ Goshen, IN 46526  
Sales: 574.534.1224 ■ Fax: 574.533.3807

[www.dutchmen-rv.com](http://www.dutchmen-rv.com)

**Your Local Dealer**