



# Greenhouse & Nursery Product Guide

Nufarm is dedicated to promoting healthy growth for your plants and your business. Our insecticide, herbicide, fungicide and plant growth regulator solutions deliver results that help ensure your success.



**Nufarm**

Grow a better tomorrow.

**SPIRATO GHN IS LABELED FOR ORNAMENTALS AND VEGETABLES**



## **TAKE NOTE, EMBLEM™ IS NOW SPIRATO® GHN.**

Through all stages of production, Spirato GHN is the go-to product for foliar, stem and root diseases providing defense and control with low use rates and an easy-to-use liquid formulation. This versatile fungicide demands the number one spot in the rotation for disease management.

**LEARN MORE ABOUT SPIRATO® GHN**  
[NUFARMINSIDER.COM/SPIRATO](http://NUFARMINSIDER.COM/SPIRATO)



## FUNGICIDE SOLUTIONS

### 26/36®

#### 26/36\*

Incorporating 26/36\* fungicide into an integrated disease management program provides effective control of key ornamental diseases.

#### KEY USES

Ornamentals

#### KEY DISEASES CONTROLLED

Botrytis, Cercospora, Thielaviopsis  
(see label for complete list)

**RATE / 1 GAL** 2 – 4 tsp

**RATE / 100 GAL** 33 – 84 fl oz (spray)

13.5 fl oz (drench)

33 – 66 fl oz (dip)

(see label for specific rates)

**EPA REG. NO.** 228-630

**ACTIVE INGR.** iprodione (19.65%),  
thiophanate-methyl (19.65%)

**FORMULATION** flowable

**CHEM. FAMILY** dicarboxamide, thiophanates

**FRAC NO.** 1 & 2 **REI** 12 hours (ornamentals)

**PACKAGE SIZE** 2 x 2.5 gal

**APPLICATION** spray, drench, dip



### 3336® DG<sup>LITE</sup>

#### 3336\* DG LITE

3336\* DG Lite is formulated with patented granular dispersing technology making it an excellent choice for soil media applications to control a wide range of diseases.

#### KEY USES

Annual and perennial flowers, bedding plants, deciduous and evergreen trees and shrubs, foliage plants, groundcovers

#### KEY DISEASES CONTROLLED

Botrytis, Cercospora, Rhizoctonia, Thielaviopsis  
(see label for complete list)

**RATE / 1000 SQ FT** 22 – 30 lb

(see label for specific rates)

**EPA REG. NO.** 1001-70

**ACTIVE INGR.** thiophanate-methyl (2.08%)

**FORMULATION** granular

**CHEM. FAMILY** thiophanates

**FRAC NO.** 1 **REI** 12 hours

**PACKAGE SIZE** 30 lb bag

**APPLICATION** broadcast, top dress, soil incorporation



### 3336® EG

#### 3336\* EG

3336\* EG is a broad-spectrum systemic fungicide which controls a variety of foliar, stem, and root diseases on a wide range of commercially important plants. 3336 EG is also effective as a pre-plant dip on cuttings and bulbs.

#### KEY USES

Annual and perennial flowers, bedding plants, deciduous and evergreen trees and shrubs, foliage plants, greenhouse, groundcovers, shadehouses and lathhouses

#### KEY DISEASES CONTROLLED

Anthrachnose, black spot of rose, Botrytis, Cercospora, Curvularia, Fusarium, Fusicladium, leaf spots and blights, powdery mildews, Rhizoctonia, rust diseases, Thielaviopsis, Venturia leaf scabs  
(see label for complete list)

**RATE / 1000 SQ FT** 2 – 6 oz

(see label for specific rates)

**EPA REG. NO.** 1001-89

**ACTIVE INGR.** thiophanate-methyl (50%)

**FORMULATION** water dispersible granule

**CHEM. FAMILY** thiophanates

**FRAC NO.** 1 **REI** 12 hours

**PACKAGE SIZE** 4 x 5 lb

**APPLICATION** spray, drench, dip



### 3336® F

#### 3336\* F

3336\* F is a water-based broad-spectrum systemic fungicide with preventive and curative properties. Its unique formulation is compatible with drench or spray applications over a wide range of ornamental settings.

#### KEY USES

Annual and perennial flowers, bedding plants, deciduous and evergreen trees and shrubs, foliage plants, groundcovers

#### KEY DISEASES CONTROLLED

Botrytis, Cercospora, powdery mildew, Rhizoctonia, Thielaviopsis (see label for complete list)

**RATE / 1 GAL** 0.5 – 1.5 tsp

**RATE / 100 GAL** 8 – 24 fl oz (spray)

8 – 16 fl oz (drench)

16 – 24 fl oz (dip)

(see label for specific rates)

**EPA REG. NO.** 1001-69

**ACTIVE INGR.** thiophanate-methyl (41.25%)

**FORMULATION** flowable

**CHEM. FAMILY** thiophanates

**FRAC NO.** 1 **REI** 12 hours

**PACKAGE SIZE** 12 x 1 qt, 2 x 2.5 gal

**APPLICATION** spray, drench, dip



# Actinovate® SP

BIOLOGICAL FUNGICIDE

## ACTINOVATE® SP

Actinovate® SP Biological Fungicide suppresses and controls root rot and foliar fungal pathogens including powdery and downy mildew, *Botrytis*, *Sclerotinia* and *Alternaria*. When used as a soil drench, it also suppresses and controls soil-borne fungi including *Fusarium*, *Rhizoctonia*, *Pythium*, *Phytophthora*, *Sclerotinia* and *Verticillium*.

### KEY USES

Bedding and foliage plants, ornamentals, shrubs

### KEY DISEASES CONTROLLED

Black spot, downy mildew, fire blight, leaf spots and rusts, powdery mildew, *Phytophthora* and *Pythium* spp., *Rhizoctonia* spp. (see label for complete list)

**RATE / 2 GAL** 1 tsp (drench)  
**RATE / 100 GAL** 6 – 12 oz (spray)  
4 – 6 oz (drench)

(see label for specific rates)

**EPA REG. NO.** 73314-1

**ACTIVE INGR.** Streptomyces lydicus WYEC 108 (0.0371%)

**FORMULATION** soluble powder

**CHEM. FAMILY** glucopyranosyl biopesticide antibiotic

**FRAC NO.** 25 **REI** 1 hour\*

**PACKAGE SIZE** 12 x 18 oz bag

**APPLICATION** spray, drench, dip

S. lydicus WYEC is a ubiquitous, naturally occurring soil microorganism that colonizes root tips and acts as a mycoparasite. \*or until sprays have dried



# Adorn®

## ADORN®

With a novel mode of action, Adorn® is an excellent addition to fungicide rotations and plays a key role in resistance management programs to defeat downy mildew, *Phytophthora* and *Pythium*.

### KEY USES

Bedding and foliage plants, groundcovers, ornamentals, shrubs

### KEY DISEASES CONTROLLED

Downy mildew, *Phytophthora* and *Pythium* spp. (see label for complete list)

**RATE / 100 GAL** 1 – 4 fl oz  
(see label for specific rates)

**EPA REG. NO.** 59639-141

**ACTIVE INGR.** fluopicolide (39.5%)

**FORMULATION** flowable

**CHEM. FAMILY** benzamides

**FRAC NO.** 43 **REI** 12 hours

**PACKAGE SIZE** 12 x 1 qt bottle

**APPLICATION** spray, drench



# Affirm™ WDG

## AFFIRM™ WDG

Affirm™ WDG is a concentrated, easy-to-mix water dispersible granule formulation that delivers excellent disease control.

### KEY USES

Edibles, ornamentals

### KEY DISEASES CONTROLLED

Botrytis, powdery mildew, *Rhizoctonia* (see label for complete list)

**RATE / 1 GAL** Consult label  
(see label for specific rates)

**EPA REG. NO.** 68173-3-1001

**ACTIVE INGR.** polyoxin D zinc salt (11.3%)

**FORMULATION** water dispersible granules

**CHEM. FAMILY** polyoxins

**FRAC NO.** 19 **REI** 4 hours

**PACKAGE SIZE** 4 x 0.5 lb resealable bag,  
3 x 2.4 lb package

**APPLICATION** spray, drench

Cleary Chemical, LLC is a wholly owned subsidiary of Nufarm.



# Agri-Mycin® 50

## AGRI-MYCIN® 50

For years, Agri-Mycin® 50 has been the industry standard bactericide. It provides effective, economical control for three to four days. Its specific mode of action is unique to streptomycin and is an essential part of any bacterial disease control program.

### KEY USES

Apples, celery, pear, peppers, potatoes, tobacco, tomatoes, tree crops

### KEY DISEASES CONTROLLED

Bacterial blight, bacterial speck\*, bacterial spot, fire blight, soft rot blackleg, wildfire blue mold (see label for complete list)

**RATE / 5 GAL** 1 – 4.5 tsp (spray, dip)  
**RATE / 100 GAL** 4 – 16 oz (spray, dip)  
(see label for specific rates)

**EPA REG. NO.** 55146-98

**ACTIVE INGR.** streptomycin sulfate (65.8%)  
(equivalent to 50% streptomycin base)

**FORMULATION** wettable powder

**CHEM. FAMILY** glucopyranosyl

**FRAC NO.** 25 **REI** 12 hours

**PACKAGE SIZE** 3 lb bag

**APPLICATION** spray, dip

\*Not registered for use in California



# Alude™

## ALUDE™

A systemic fungicide, Alude™ provides effective control of various plant diseases.

### KEY USES

Annual and perennial flowers, bedding plants, deciduous and evergreen trees and shrubs, foliage plants, groundcovers, vegetable transplants

### KEY DISEASES CONTROLLED

Bacterial blight, downy mildew, fire blight, *Phytophthora* and *Pythium* spp. (see label for complete list)

**RATE / 1 GAL** 1.5 – 3.6 tsp (spray)  
0.3 – 0.6 tsp (drench)  
**RATE / 100 GAL** 26 – 54 fl oz (spray)  
5 – 10 fl oz (drench)  
(see label for specific rates)

**EPA REG. NO.** 55146-83

**ACTIVE INGR.** mono- and dibasic sodium, potassium and ammonium phosphites (53.6%)

**FORMULATION** liquid

**CHEM. FAMILY** phosphite

**FRAC NO.** 33 **REI** 4 hours

**PACKAGE SIZE** 2 x 2.5 gal

**APPLICATION** spray, drench



www.nufarminsider.com

This guide is intended to provide a product overview. See product labels for complete details and labeled use listing.

# Cuproxat® FL

## CUPROXAT® FL

Cuproxat® FL premium tri-basic copper fungicide is engineered with uniform particles which deliver better plant coverage and protection against fungal and bacterial diseases.

### KEY USES

Greenhouse, shade crops, ornamentals

### KEY DISEASES CONTROLLED

Anthracnose, Botrytis, dieback, downy mildew, leaf spot, powdery mildew, scab, Septoria leaf spot, Volutella leaf blight  
(see label for complete list)

**RATE** Consult label

**NOW OMRI LISTED® FOR ORGANIC CROP PRODUCTION**

**EPA REG. NO.** 55146-151

**ACTIVE INGR.** basic copper sulfate (27.1%)

**FORMULATION** flowable

**CHEM. FAMILY** inorganic

**FRAC NO.** M1

**REI** 24 hours (greenhouse), 48 hours

**PACKAGE SIZE** 4 x 1 gal

**APPLICATION** spray



# Protect™ DF

## PROTECT™ DF

Protect™ DF provides excellent control of a variety of important plant diseases.

### KEY USES

Field, greenhouse, groundcovers and herbaceous plants, nursery, ornamental and shade trees

### KEY DISEASES CONTROLLED

Botrytis, Cercospora (see label for complete list)

**RATE** Consult label

**EPA REG. NO.** 1001-77

**ACTIVE INGR.** mancozeb (75%)

**FORMULATION** dry flowable

**CHEM. FAMILY** dithiocarbamate

**FRAC NO.** M3 **REI** 24 hours

**PACKAGE SIZE** 6 x 6 lb

**APPLICATION** spray



# Spectro® 90 WDG

## SPECTRO® 90 WDG

Spectro® 90 WDG combines two broad-spectrum fungicides to deliver contact and systemic plant disease protection. Spectro 90 WDG prevents and controls disease in annual and perennial flowers, as well as bedding plants, groundcovers and trees and shrubs.

### KEY USES

More than 110 ornamental species including annual and perennial flowers, bedding plants, deciduous and evergreen trees and shrubs, foliage plants, groundcovers

### KEY DISEASES CONTROLLED

Botrytis, Cercospora, Rhizoctonia  
(see label for complete list)

**RATE** Consult label

**EPA REG. NO.** 1001-72

**ACTIVE INGR.** chlorothalonil (72%),  
thiophanate-methyl (18%)

**FORMULATION** water dispersible granules

**CHEM. FAMILY** chloronitriles, thiophanates

**FRAC NO.** 1 & M5 **REI** 12 hours

**PACKAGE SIZE** 4 x 5 lb, 1 x 24 lb pail

**APPLICATION** spray



# Emblem Spirato® GHN

## SPIRATO® GHN

Through all stages of production, Spirato® GHN is a go-to product for foliar, stem and root diseases providing defense and control with low use rates and an easy-to-use liquid formulation. This versatile fungicide demands the number one spot in the rotation for disease management.

### KEY USES

More than 45 ornamental species including African violet, aster, azalea, begonia, pansy, petunia, poinsettia, brassica leafy vegetables, leafy vegetables, herbs

### KEY DISEASES CONTROLLED

Aerial blight, Alternaria leaf spot and blight, Botrytis blight, black root rot, Cercospora leaf spot, Cylindrocladium stem and root rot, Fusarium stem and root rot, Rhizoctonia stem and root rot, Septoria leaf spot, Southern blight (see label for complete list)

**RATE** Consult Label

**EPA REG. NO.** 228-723

**ACTIVE INGR.** fludioxonil (40.3%)

**FORMULATION** liquid

**CHEM. FAMILY** phenylpyrrole

**FRAC NO.** 12

**REI** 12 hours

**PACKAGE SIZE** 8 x 1 pt

**APPLICATION** spray, drench



# Strider™

## STRIDER™

Strider™ is a high-quality fungicide formulation with both preventive and curative modes of action.

### KEY USES

Nursery and outdoor ornamentals

### KEY DISEASES CONTROLLED

Botrytis, Cercospora, powdery mildew  
(see label for complete list)

**RATE / 100 GAL** 2 - 24 oz

(see label for specific rates)

**EPA REG. NO.** 228-623

**ACTIVE INGR.** propiconazole (14.3%)

**FORMULATION** flowable

**CHEM. FAMILY** triazole

**FRAC NO.** 3 **REI** 24 hours

**PACKAGE SIZE** 4 x 1 gal, 2 x 2.5 gal

**APPLICATION** spray







## PLANT GROWTH REGULATOR SOLUTIONS

# Fascination®

### FASCINATION®

Fascination® is an effective tool for more presentable, more marketable Easter and LA hybrid lilies, poinsettias and other ornamentals.

### KEY USES

Greenhouse ornamentals including lilies

### KEY PERFORMANCE BENEFITS

Delays leaf yellowing, increases flower size and number, prolongs flowering, plant vigor and growth *(see label for complete list)*

**RATE** Consult label

**EPA REG. NO.** 73049-41

**ACTIVE INGR.** benzyladenine (1.8%), gibberellins (1.8%)

**FORMULATION** liquid

**CHEM. FAMILY** gibberellins

**REI** 4 hours

**PACKAGE SIZE** 4 x .5 gal bottle, 64 fl oz

**APPLICATION** spray



# RiteWay®

### RITEWAY®

RiteWay® increases lateral branching and promotes flowering to help improve crop marketability. RiteWay contains 1.9 percent 6-BA and is easy to mix and apply.

### KEY USES

Christmas cactus, echinacea, hosta

### KEY PERFORMANCE BENEFITS-

Increases lateral or basal branching, promotes flowering and reduces overall plant height *(see label for complete list)*

**RATE / 1 GAL** 18 - 540 ml  
0.3 - 19.4 oz  
50 - 3000 ppm

*(see label for specific rates)*

**EPA REG. NO.** 71368-60

**ACTIVE INGR.** benzyladenine (6-BA) (1.9%)

**FORMULATION** liquid

**CHEM. FAMILY** purine

**REI** 12 hours

**PACKAGE SIZE** 4 x 1 gal

**APPLICATION** spray



# Sumagic®

### SUMAGIC®

Consistent and reliable, Sumagic® delivers more marketable, attractive and compact ornamentals with an increased shelf life.

### KEY USES

Greenhouse

### KEY PERFORMANCE BENEFITS

Enhances floral density and foliage color, improves stress tolerance, increases plant shelf life *(see label for complete list)*

**RATE** Consult label

**EPA REG. NO.** 59639-37

**ACTIVE INGR.** uniconazole-P (.055%)

**FORMULATION** liquid

**CHEM. FAMILY** triazole

**REI** 12 hours

**PACKAGE SIZE** 4 x 1 gal, 15 gal drum

**APPLICATION** spray



## NOTES

---

---

---

---

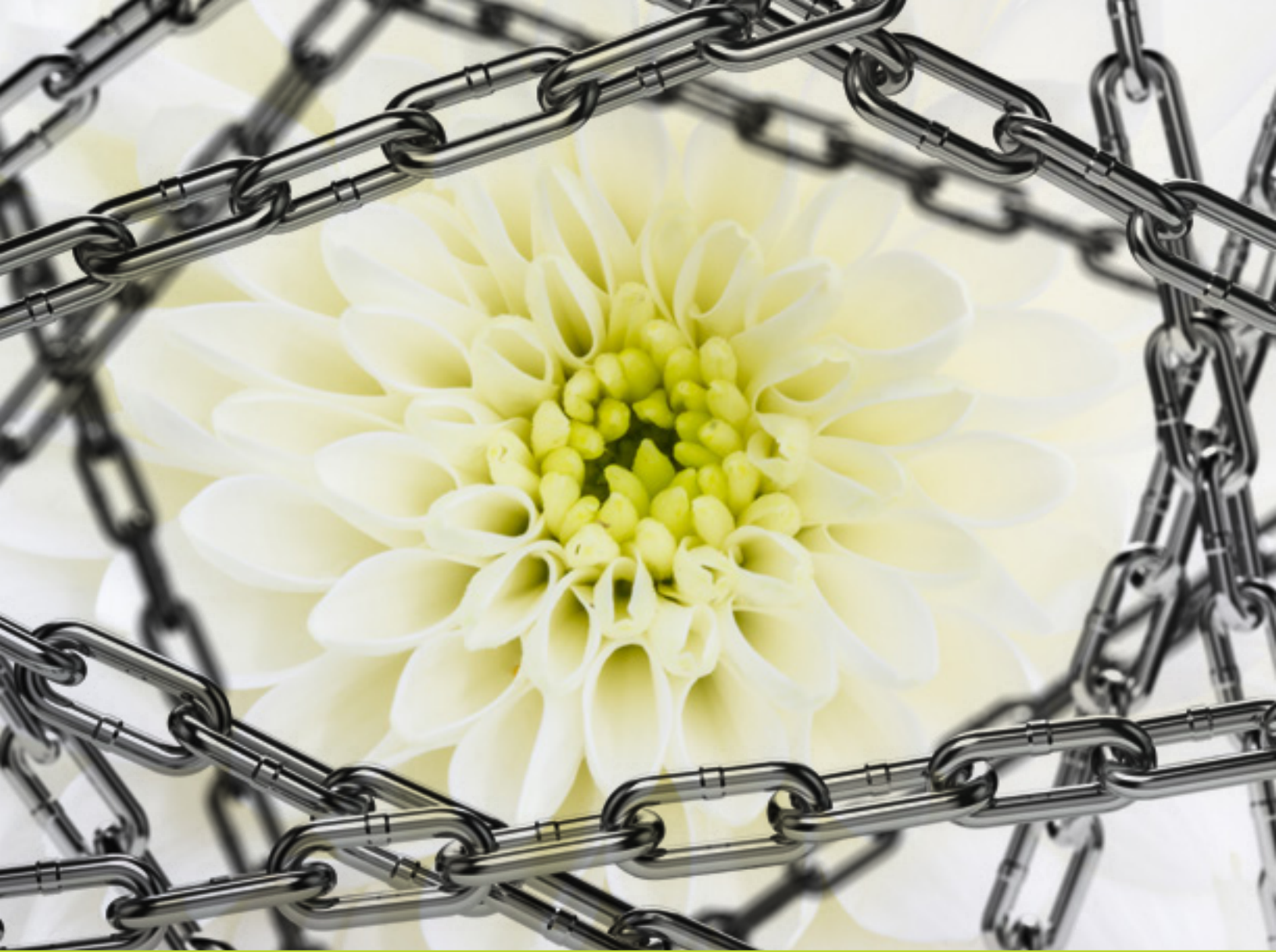
---

---

---

---





## LOCK IN PROTECTION. TIMES 2.

At Nufarm, we believe in taking care of your crops every step of the way. Whether the season is just starting or you're getting ready for sale, our complete line of plant protection products has you covered.

For locked-in protection against devastating insect pests, consider drench-applied Safari® Insecticide for lasting residual and TriStar® Insecticide for shorter action as you near delivery dates.

### Safari® INSECTICIDE

Safari® is a systemic insecticide with quick uptake and knockdown. It controls a broad spectrum of invasive pests including Q- and B-biotype whiteflies, aphids, fungus gnats, leafhoppers, leafminers, mealybugs, and armored and soft scales – some of the most costly pests in the market. Safari can be used as a drench and delivers lasting control.



### TriStar® INSECTICIDE

Achieve quick knockdown of a wide range of pests with TriStar® Insecticide. The odorless, water-based formulation mixes easily and works with contact, systemic and translaminar activity to protect valuable plants. Acetamiprid was classified as reduced risk by the EPA. Additionally, TriStar does not have a bee box.



## INSECTICIDE SOLUTIONS

### Nufarm Chlorpyrifos SPC 4

#### NUFARM CHLORPYRIFOS SPC 4

Achieve consistent, proven control of more than 200 outdoor destructive pests with Nufarm Chlorpyrifos SPC 4. Approved for selective USDA quarantine applications.

#### KEY USES

Greenhouse and outdoor ornamentals

#### KEY PESTS CONTROLLED

Ants, armyworms, fleas, mole crickets, ticks, white grubs, wood infesting insects (*see label for complete list*)

#### RATE

Consult label

EPA REG. NO. 228-624

ACTIVE INGR. chlorpyrifos (44.7%)

FORMULATION liquid

CHEM. FAMILY organophosphate

IRAC NO. 1B REI 24 hours

PACKAGE SIZE 2 x 2.5 gal

APPLICATION spray, drench



Nufarm Chlorpyrifos SPC 4 Insecticide is an EPA Restricted-Use Pesticide. Always read and follow label directions.

### DiPel® PRO DF

#### DIPEL® PRO DF BIOLOGICAL INSECTICIDE

Widely used, DiPel® PRO DF delivers outstanding worm control while being friendly to workers, the environment, and beneficial insects.

#### KEY USES

Landscape, ornamentals

#### KEY PESTS CONTROLLED

Lepidopterous worms: armyworms, loopers, tent caterpillars, tobacco budworms, various bagworms and many other worms (*see label for complete list*)

#### RATE / ACRE

0.25 – 2 lb

(*see label for specific rates*)

EPA REG. NO. 73049-39

ACTIVE INGR. *Bacillus thuringiensis* (54%)

FORMULATION dry flowable

CHEM. FAMILY microbial

IRAC NO. 11A REI 4 hours

PACKAGE SIZE 30 x 1 lb case

APPLICATION spray



### Distance®

#### DISTANCE® IGR

Distance® IGR breaks the life cycle of whiteflies, fungus gnats and other insects, providing growers with a resistance management tool that effectively controls harmful insects.

#### KEY USES

Greenhouse and outdoor ornamentals, groundcovers, non-bearing fruit trees, shrubs and ornamental trees

#### KEY PESTS CONTROLLED

Fungus gnats, leafminers, scales, shore flies, whiteflies (*see label for complete list*)

#### RATE / 100 GAL

6 – 12 fl oz (*spray*)

2 – 6 fl oz (*drench*)

(*see label for specific rates*)

EPA REG. NO. 59639-96

ACTIVE INGR. pyriproxyfen (11.23%)

FORMULATION emulsifiable concentrate

CHEM. FAMILY pyriproxyfen

IRAC NO. 7C REI 12 hours

PACKAGE SIZE 4 x 1 qt tip-n-pour

APPLICATION spray, drench



### Gnatrol® WDG

#### GNATROL® WDG BIOLOGICAL LARVICIDE

Gnatrol® offers highly selective, effective control of fungus gnat larvae, especially for those growers concerned with worker safety, the environment and resistance management.

#### KEY USES

Edibles, ornamentals, nursery, vegetable plants

#### KEY PESTS CONTROLLED

Fungus gnat larvae (*see label for complete list*)

#### RATE / 100 GAL

3.2 – 6.4 oz (*drench*)

13 – 26 oz (*heavy infestation*)

(*see label for specific rates*)

EPA REG. NO. 73049-56

ACTIVE INGR. *Bacillus thuringiensis* (37.4%)

FORMULATION water dispersible granule

CHEM. FAMILY bacillus

IRAC NO. 11A REI 4 hours

PACKAGE SIZE 16 lb pail

APPLICATION chemigation, drench, drip





## Mallet® 2F T&O

### MALLET® 2F T&O

Mallet® 2F T&O is the economical standard for soil-based insect control programs. Use on indoor and outdoor ornamentals (includes greenhouse and interior plantscapes) for long-residual, upward systemic control of piercing and sucking pests.

#### KEY USES

Greenhouse and nursery

#### KEY PESTS CONTROLLED

Aphids, leafminers, mealybugs, scales, whiteflies  
(see label for complete list)

**RATE** Consult label

**EPA REG. NO.** 228-695

**ACTIVE INGR.** imidacloprid (21.4%)

**FORMULATION** liquid

**CHEM. FAMILY** neonicotinoid

**IRAC NO.** 4A **REI** 12 hours

**PACKAGE SIZE** 4 x 1 gal, 2 x 2.5 gal

**APPLICATION** spray, drench



## Mantra® 60 WSP

### MANTRA® 60 WSP

Mantra® 60 WSP is a systemic insecticide for greenhouse ornamentals providing long-residual, upward systemic control of piercing and sucking pests.

#### KEY USES

Greenhouse and nursery

#### KEY PESTS CONTROLLED

Aphids, mealybugs, whiteflies (see label for complete list)

**RATE / 100 GAL** 20 gram pack (spray)  
(see label for specific rates including drench rates)

**EPA REG. NO.** 228-681

**ACTIVE INGR.** imidacloprid (60%)

**FORMULATION** water-soluble packet

**CHEM. FAMILY** neonicotinoid

**IRAC NO.** 4A **REI** 12 hours

**PACKAGE SIZE** 4 x 4 x (5 x 20 gm) case

**APPLICATION** spray, drench



## Mantra® 1G

### MANTRA® 1G

Mantra® 1G is a granular formulation for greenhouse ornamentals providing long-residual, upward systemic control of piercing and sucking pests. An excellent choice for soil media applications.

#### KEY USES

Ornamental plants in greenhouses, nurseries and interior plantscapes

#### KEY PESTS CONTROLLED

Aphids, leafminers, mealybugs, scales, whiteflies  
(see label for complete list)

**RATE / 1000 GAL** 15 oz (broadcast)  
(see label for specific rates including topical rates)

**EPA REG. NO.** 228-523

**ACTIVE INGR.** imidacloprid (1.0%)

**FORMULATION** granular

**CHEM. FAMILY** neonicotinoid

**IRAC NO.** 4A **REI** 12 hours

**PACKAGE SIZE** 4 x 5 lb, 50 lb drum

**APPLICATION** spray, drench



## Minx™ 2

### MINX™ 2

Minx™ 2 delivers broad-spectrum mite and leafminer control in a new low VOC water-based formula.

#### KEY USES

Greenhouse and nursery ornamentals

#### KEY PESTS CONTROLLED

Aphids, leafminers, mites, thrips, whiteflies  
(see label for complete list)

**RATE** Consult label

**EPA REG. NO.** 228-736

**ACTIVE INGR.** abamectin (2.0%)

**FORMULATION** microemulsion

**CHEM. FAMILY** avermectin

**IRAC NO.** 6 **REI** 12 hours

**PACKAGE SIZE** 4 x 1 qt, 4 x 1 gal

**APPLICATION** spray



## Overture®

### OVERTURE® 35 WP

Due to its novel chemistry, Overture® provides outstanding control of immature adult thrips, even those that are considered tolerant or resistant to other insecticides. Plus, Overture is soft on beneficial insects.

#### KEY USES

Enclosed commercial greenhouses

#### KEY PESTS CONTROLLED

Lepidopterous worms, thrips  
(see label for complete list)

**RATE / 100 GAL** 8 oz  
(see label for specific rates)

**EPA REG. NO.** 59639-125

**ACTIVE INGR.** pyridalyl (35%)

**FORMULATION** wettable powder

**CHEM. FAMILY** pyridine

**IRAC NO.** UN **REI** 12 hours

**PACKAGE SIZE** 8 x 2 oz WSP packet

**APPLICATION** spray



www.nufarminsider.com

This guide is intended to provide a product overview. See product labels for complete details and labeled use listing.

# Safari®

## SAFARI® 20 SG

Safari® 20 SG is a super-systemic insecticide that quickly knocks down a broad spectrum of ornamental pests with long-lasting control.

### KEY USES

Greenhouse, ornamentals, nursery

### KEY PESTS CONTROLLED

Aphids, armored and soft scales, fungus gnats, leafminers, mealybugs, whiteflies (including Q- and B-biotype) and many more (*see label for complete list*)

**RATE / 1 GAL** 12 – 24 oz (*basal bark*)  
**RATE / 100 GAL** 4 – 8 oz (*spray*)  
12 – 24 oz (*drench*)

(*see label for specific rates*)

**EPA REG. NO.** 86203-11-59639

**ACTIVE INGR.** dinotefuran (20%)

**FORMULATION** water soluble granule

**CHEM. FAMILY** neonicotinoids

**IRAC NO.** 4A **REI** 12 hours

**PACKAGE SIZE** 16 x 12 oz bottle, 4 x 3 lb bottle

**APPLICATION** spray, drench, basal bark



# Tame®

## TAME® 2.4 EC SPRAY

Tame® delivers broad-spectrum knockdown of numerous insect/mite pest problems and is an excellent tank mix partner.

### KEY USES

Commercial lathhouses, greenhouses, outdoor ornamentals, shadehouses

### KEY PESTS CONTROLLED

Aphids, glassy-winged sharpshooters, mites, scales, whiteflies (*see label for complete list*)

**RATE** Consult label

**EPA REG. NO.** 59639-77

**ACTIVE INGR.** fenpropathrin (30.9%)

**FORMULATION** liquid

**CHEM. FAMILY** pyrethroid

**IRAC NO.** 3 **REI** 24 hours

**PACKAGE SIZE** 12 x 1 qt bottle

**APPLICATION** spray



Tame® is an EPA Restricted-Use Pesticide. Always read and follow label directions.

# TetraSan®

## TETRASAN® 5 WDG

With excellent translaminar movement and outstanding residual activity, TetraSan® affects spider mites at all life stages without harming most beneficial insects.

### KEY USES

Greenhouse, landscape, nursery

### KEY PESTS CONTROLLED

Spider mites (*see label for complete list*)

**RATE** Consult label

**EPA REG. NO.** 59639-108

**ACTIVE INGR.** etoxazole (5%)

**FORMULATION** water dispersible granule

**CHEM. FAMILY** oxazoline

**IRAC NO.** 10B **REI** 12 hours

**PACKAGE SIZE** 8 x 2 oz WSP packet

**APPLICATION** spray



# TriStar® 8.5 SL

## TRISTAR® 8.5 SL

TriStar® 8.5 SL provides excellent control of a wide range of ornamental pests. Its contact, systemic and translaminar activity provides a fast-acting, low-odor and residual foliar spray for indoor and outdoor ornamentals (includes greenhouse and interior plantscapes).

### KEY USES

Ornamental and flowering plants grown outdoors and in greenhouses, shadehouses and lathhouses

### KEY PESTS CONTROLLED

Aphids, leafminers, mealybugs, scales, thrips, whiteflies (*see label for complete list*)

**RATE** Consult label

SEE THE PRODUCT LABEL

**NO BEE BOX**

TRISTAR IS AN EPA CLASSIFIED  
REDUCED RISK INSECTICIDE

**EPA REG. NO.** 8033-106-1001

**ACTIVE INGR.** acetamiprid (8.5%)

**FORMULATION** soluble liquid

**CHEM. FAMILY** neonicotinoid

**IRAC NO.** 4A **REI** 12 hours

**PACKAGE SIZE** 8 x 4 oz tip-n-pour, 4 x 1 qt, 4 x 1 gal

**APPLICATION** spray



### NOTES



## NON-SELECTIVE HERBICIDE SOLUTIONS

Nufarm

### Diquat SPC 2L

#### NUFARM DIQUAT SPC 2L

Nufarm Diquat SPC 2L herbicide provides non-selective control of aquatic weeds on contact. It spreads through the water for broad-spectrum control and is completely inactivated on contact with soil.

#### KEY USES

Greenhouse and nursery ornamentals

#### KEY WEEDS CONTROLLED

Bladderwort, cattail, duckweed, frog's bit, hydrilla, pennywort, water hyacinth, water lettuce, watermilfoils (see label for complete list)

**RATE / 15 GAL** 16 – 32 fl oz (broadcast)

**RATE / 100 GAL** 32 – 64 fl oz (spot)

(see label for specific rates)

**EPA REG. NO.** 228-675

**ACTIVE INGR.** diquat dibromide (37.3%)

**FORMULATION** liquid

**CHEM. FAMILY** bipyridylum

**HRAC NO.** 22 **REI** 24 hours

**PACKAGE SIZE** 4 x 1 gal, 2 x 2.5 gal

**APPLICATION** spray



### ProDeuce®

#### PRODEUCE®

Eliminates existing weeds and prevents new growth in cracks and crevices, along fences and foundations and throughout gravel areas.

#### KEY USES

On cracks and crevices in driveways, sidewalks, walkways and patios, along fences, foundations, curbs, retaining walls and edges of lawns, around the base or in mulched beds of well-established (at least 6 months old) plants, shrubs or trees, on gravel areas

#### KEY WEEDS CONTROLLED

Bermudagrass, cheat, chickweed, crabgrass, kochia, lambsquarters, mustard, pigweed, rye, shepherd's-purse, spurge, thistle (see label for complete list)

**RATE / 1000 SQ FT** 3 – 5.75 oz (broadcast)

(see label for specific rates)

**EPA REG. NO.** 228-509

**ACTIVE INGR.** glyphosate (40.15%), proflaminate (7.51%)

**FORMULATION** liquid

**CHEM. FAMILY** glycine, dinitroaniline

**HRAC NO.** 9 & 3 **REI** 4 hours\*

**PACKAGE SIZE** 8 x 64 oz squeeze-and-pour, 4 x 1 gal, 2 x 2.5 gal

**APPLICATION** spray

\*or until sprays have dried



### Razor®

#### RAZOR®

Razor® is a water-soluble glyphosate formulation for broad-spectrum non-selective control of hard-to-kill weeds.

#### KEY USES

Non-selective weed control, post-emergent

#### KEY WEEDS CONTROLLED

Many annual and perennial weeds and woody brush (see label for complete list)

**RATE / 1 GAL** 0.67 – 13 fl oz

**RATE / 100 GAL** 64 – 320 fl oz

(see label for specific rates)

**EPA REG. NO.** 228-366

**ACTIVE INGR.** glyphosate (41%)

**FORMULATION** liquid

**CHEM. FAMILY** glycine

**HRAC NO.** 9 **REI** 4 hours\*

**PACKAGE SIZE** 2 x 2.5 gal, 30 gal

**APPLICATION** spray

\*or until sprays have dried



### Razor & Burn®

#### RAZOR BURN®

Razor Burn® non-selective post-emergence herbicide combines the fast contact activity of diquat with the systemic control of glyphosate in one high-performance liquid formulation.

#### KEY USES

Non-selective weed control, post-emergent

#### KEY WEEDS CONTROLLED

Many annual and perennial weeds and woody brush (see label for complete list)

**RATE** Consult label

**EPA REG. NO.** 228-446

**ACTIVE INGR.** glyphosate (41.0%), diquat dibromide (2.1%)

**FORMULATION** liquid

**CHEM. FAMILY** glycine derivative, bipyridylum

**HRAC NO.** 9 & 22 **REI** 4 hours\*

**PACKAGE SIZE** 8 x 64 oz squeeze-and-pour, 4 x 1 gal

**APPLICATION** spray

\*or until sprays have dried



www.nufarminsider.com

This guide is intended to provide a product overview. See product labels for complete details and labeled use listing.

# Razor® Pro

## RAZOR® PRO

This premium formulation of glyphosate with proprietary surfactants delivers non-selective weed control in a broad range of settings.

### KEY USES

Ornamental weed control

### KEY WEEDS CONTROLLED

Many annual and perennial weeds and woody brush  
(see label for complete list)

### RATE

Consult label

EPA REG. NO. 228-366

ACTIVE INGR. glyphosate (41.0%)

FORMULATION liquid

CHEM. FAMILY glycine derivative

HRAC NO. 9 REI 4 hours\*

PACKAGE SIZE 5 x 1 gal, 2 x 2.5 gal, 30 gal

APPLICATION spray

\*or until sprays have dried



## SELECTIVE HERBICIDE SOLUTIONS

# Envoy Plus®

## ENVOY PLUS®

Envoy Plus® is the most effective post-emergence grass control herbicide. It provides over-the-top control of both annual and perennial grasses with excellent plant safety.

### KEY USES

Conifer trees, garden flowers and plants, groundcovers, ornamental trees and shrubs

### KEY WEEDS CONTROLLED

Annual and perennial grasses  
(see label for complete list)

RATE / 1000 SQ FT 0.4 - 0.8 fl oz

(see label for specific rates)

EPA REG. NO. 59639-132

ACTIVE INGR. clethodim (12.6%)

FORMULATION liquid

CHEM. FAMILY cyclohexene oxime

HRAC NO. 1 REI 24 hours

PACKAGE SIZE 4 x 1 gal

APPLICATION spray



## PRE-EMERGE WITH RESIDUAL CONTROL

# BroadStar™

## BROADSTAR™

BroadStar™ is the best pre-emergence granular herbicide because it controls tough broadleaf and grassy weeds with the longest residual performance.

### KEY USES

Container and field grown ornamentals, non-bearing fruit and nut trees and vines, non-crop areas and around buildings, fencerows, gravel surfaces, driveways, ground mats, and other similar sites

### KEY WEEDS CONTROLLED

Bittercress, chickweed, common groundsel, liverwort, lambsquarters, oxalis, pigweed, shepherd's-purse, spurge  
(see label for complete list)

RATE / ACRE 150 lb

RATE / 1000 SQ FT 3.5 lb

(see label for specific rates)

EPA REG. NO. 59639-128

ACTIVE INGR. flumioxazin (0.25%)

FORMULATION granule

CHEM. FAMILY N-phenylphthalimide

HRAC NO. 14 REI 12 hours

PACKAGE SIZE 50 lb bag

APPLICATION broadcast



## Nufarm

# Double O™ SPC

## DOUBLE O™ SPC

Keep ornamentals free from a broad range of weeds for up to three months with this low-odor and low-dust formulation.

### KEY USES

Container-grown ornamentals, field-grown ornamentals and labeled Christmas trees, landscape ornamentals, cut flower and foliage crops

### KEY WEEDS CONTROLLED

Chickweed, clover, dandelion, groundsel, lambsquarters, oxalis, pigweed, shepherd's-purse, spurge (garden, hairy, prostrate, spotted)  
(see label for complete list)

RATE / 1 ACRE 50 - 100 lbs (broadcast dry)

(see label for specific rates)

EPA REG. NO. 228-632

ACTIVE INGR. oxyfluorfen (2%), oryzalin (1%)

FORMULATION granular

CHEM. FAMILY dinitroaniline, diphenylether

HRAC NO. 3 & 14 REI 24 hours

PACKAGE SIZE 50 lb bag

APPLICATION broadcast



FIELD-GROWN NURSERY



GREENHOUSE



EDIBLES



OMRI LISTED



DANGER



WARNING



CAUTION



RESTRICTED-USE



AQUATIC





# SureGuard<sup>®</sup>

## HERBICIDE

### TAKE A CLOSER LOOK AND SEE THE DIFFERENCE

**SUREGUARD<sup>®</sup> AND MARENGO<sup>®</sup> LOOK SIMILAR ON PAPER,  
BUT THEY ARE TWO VERY DIFFERENT HERBICIDES.**

Although SureGuard and Marengo are both effective pre-emerge herbicide solutions, they deliver different weed control results. Understand the differences and your weed control needs. SureGuard outperforms Marengo when controlling annual winter weeds including bittercress and other mustards. SureGuard also provides post-emerge weed control empowering you to kill existing weeds while stopping new weeds before they start.

**SUREGUARD PERFORMANCE BENEFITS:**

- Controls annual winter weeds including bittercress and other mustards
- Provides post-emerge weed control
- Improves glyphosate spectrum and speed
- Better tolerated by cool-season turf
- SureGuard SC now available – same power as SureGuard in a convenient liquid formulation

SUREGUARD VS. MARENGO PERFORMANCE	SUREGUARD	MARENGO
PRE-EMERGE WEED CONTROL	YES	YES
POST-EMERGE WEED CONTROL	YES	NO <small>except a few very small weeds</small>
IMPROVES GLYPHOSATE SPECTRUM WHEN MIXED	YES	NO
IMPROVES GLYPHOSATE SPEED WHEN MIXED	YES	NO
ANNUAL GRASS CONTROL	GOOD	VERY GOOD
SUMMER BROADLEAF WEED CONTROL	VERY GOOD	VERY GOOD
WINTER ANNUAL WEED CONTROL	VERY GOOD	FAIR TO GOOD <small>weak on bittercress and other mustards</small>
ROOT PRUNING HERBICIDE	NO	YES
COOL-SEASON TURFGRASS TOLERANCE (SPRAY APPLICATION)	FAIR TO GOOD	NO
WARM-SEASON TURFGRASS TOLERANCE (SPRAY APPLICATION)	DORMANT ONLY	YES




## GROWING BETTER SINCE 1916

More than 100 years ago, our history began with a goal to help New Zealand's farmers.

From New Zealand, we have grown to serve more than 100 countries worldwide.

Today, our founders' passion to help growers through quality solutions and unparalleled customer service remains at the heart of everything we do.

**100 YEARS AND STILL GROWING**



PERSPECTIVE SKETCH  
THE N.Z. FARMERS' FERTILIZER CO'S WORKS  
TE PAPARA



[www.nufarminsider.com](http://www.nufarminsider.com)

Nufarm Chlorpyrifos SPC 4 and Tame® are EPA Restricted-Use Pesticides. Always read and follow label directions.

©2018 Nufarm. 26/36®, 3336®, Agri-Mycin®, Cuproxat®, Double O™, Mallet®, Mantra®, ProDeuce®, Razor®, Razor Burn®, RiteWay® and Spirato® are trademarks of Nufarm. Affirm™, Alude™, Minx™, Protect™, Spectro®, Strider™ and Torque™ are trademarks of Cleary Chemical, LLC. TriStar® is a trademark of Nippon Soda Co, Ltd. Adorn®, BroadStar™, Distance®, Envoy Plus®, Overture®, Safari®, SureGuard®, Tame®, TetraSan® and Tourney® are trademarks of Valent U.S.A. LLC. DiPel®, Gnatrol® and Fascination® are trademarks of Valent BioSciences LLC. Sumagic® is a trademark of Sumitomo Chemical Company, Ltd. OMRI® is a trademark of Organic Materials Review Institute. Marengo® is a trademark of Bayer. Actinovate® is a trademark of Novozymes A/S.

14-GHN-0012-L 1/18