



Greenhouse & Nursery Product Guide

Nufarm is dedicated to promoting healthy growth for your plants and your business. Our insecticide, herbicide, fungicide and plant growth regulator solutions deliver results that help ensure your success.



Nufarm

Grow a better tomorrow.



DISEASE PROTECTION FROM START TO FINISH

Protect your crops from diseases with Nufarm's complete line of plant protection products.
 Contact your Nufarm representative to customize your plan.

DISEASE POTENTIAL	BACTERIAL BLIGHT	BOTRYTIS	POINSETTIA SCAB	POWDERY MILDEW	PYTHIUM	RHIZOCTONIA	THIELAVIOPSIS
26/36® FRAC 1 + 2		•		•		•	•
3336® DG LITE FRAC 1		•				•	•
3336® EG FRAC 1		•				•	•
3336® F FRAC 1		•				•	•
ADORN® FRAC 43					•		
AFFIRM™ FRAC 19		•		•		•	•
AGRI-MYCIN® 50 FRAC 25	•						
ALUDE™ FRAC 33					•		
CUPROXAT® FL FRAC M1	•	•					
PROTECT™ DF FRAC M3	•	•	•			•	
SPECTRO® 90 FRAC 1 + M5		•				•	•
SPIRATO® GHN FRAC 12		•				•	•

FUNGICIDES

FUNGICIDE SOLUTIONS

26/36®

26/36*

Incorporating 26/36* fungicide into an integrated disease management program provides effective control of key ornamental diseases.

KEY USES

Ornamentals

KEY DISEASES CONTROLLED

Botrytis, Cercospora, Thielaviopsis
(see label for complete list)

RATE / 1 GAL 2 – 4 tsp

RATE / 100 GAL 33 – 84 fl oz (spray)

13.5 fl oz (drench)

33 – 66 fl oz (dip)

(see label for specific rates)

EPA REG. NO. 228-630

ACTIVE INGR. iprodione (19.65%),
thiophanate-methyl (19.65%)

FORMULATION flowable

CHEM. FAMILY dicarboxamide, thiophanates

FRAC NO. 1 & 2 **REI** 12 hours (ornamentals)

PACKAGE SIZE 2 x 2.5 gal

APPLICATION spray, drench, dip



3336® DG LITE

3336* DG LITE

3336* DG Lite is formulated with patented granular dispersing technology making it an excellent choice for soil media applications to control a wide range of diseases.

KEY USES

Annual and perennial flowers, bedding plants, deciduous and evergreen trees and shrubs, foliage plants, groundcovers

KEY DISEASES CONTROLLED

Botrytis, Cercospora, Rhizoctonia, Thielaviopsis
(see label for complete list)

RATE / 1000 SQ FT 22 – 30 lb

(see label for specific rates)

EPA REG. NO. 1001-70

ACTIVE INGR. thiophanate-methyl (2.08%)

FORMULATION granular

CHEM. FAMILY thiophanates

FRAC NO. 1 **REI** 12 hours

PACKAGE SIZE 30 lb bag

APPLICATION broadcast, top dress, soil incorporation



3336® EG

3336* EG

3336* EG is a broad-spectrum systemic fungicide which controls a variety of foliar, stem and root diseases on a wide range of commercially important plants. 3336 EG is also effective as a pre-plant dip on cuttings and bulbs.

KEY USES

Annual and perennial flowers, bedding plants, deciduous and evergreen trees and shrubs, foliage plants, greenhouse, groundcovers, shadehouses and lathhouses

KEY DISEASES CONTROLLED

Anthrachnose, black spot of rose, Botrytis, Cercospora, Curvularia, Fusarium, Fusicladium, leaf spots and blights, powdery mildews, Rhizoctonia, rust diseases, Thielaviopsis, Venturia leaf scabs
(see label for complete list)

RATE / 1000 SQ FT 2 – 6 oz

(see label for specific rates)

EPA REG. NO. 1001-89

ACTIVE INGR. thiophanate-methyl (50%)

FORMULATION water-dispersible granule

CHEM. FAMILY thiophanates

FRAC NO. 1 **REI** 12 hours

PACKAGE SIZE 4 x 5 lb

APPLICATION spray, drench, dip



3336® F

3336* F

3336* F is a water-based broad-spectrum systemic fungicide with preventive and curative properties. Its unique formulation is compatible with drench or spray applications over a wide range of ornamental settings.

KEY USES

Annual and perennial flowers, bedding plants, deciduous and evergreen trees and shrubs, foliage plants, groundcovers

KEY DISEASES CONTROLLED

Botrytis, Cercospora, powdery mildew, Rhizoctonia, Thielaviopsis (see label for complete list)

RATE / 1 GAL 0.5 – 1.5 tsp

RATE / 100 GAL 8 – 24 fl oz (spray)

8 – 16 fl oz (drench)

16 – 24 fl oz (dip)

(see label for specific rates)

EPA REG. NO. 1001-69

ACTIVE INGR. thiophanate-methyl (41.25%)

FORMULATION flowable

CHEM. FAMILY thiophanates

FRAC NO. 1 **REI** 12 hours

PACKAGE SIZE 12 x 1 qt, 2 x 2.5 gal

APPLICATION spray, drench, dip



Actinovate® SP

BIOLOGICAL FUNGICIDE

ACTINOVATE® SP

Actinovate® SP Biological Fungicide suppresses and controls root rot and foliar fungal pathogens including powdery and downy mildew, *Botrytis*, *Sclerotinia* and *Alternaria*. When used as a soil drench, it also suppresses and controls soil-borne fungi including *Fusarium*, *Rhizoctonia*, *Pythium*, *Phytophthora*, *Sclerotinia* and *Verticillium*.

KEY USES

Bedding and foliage plants, ornamentals, shrubs

KEY DISEASES CONTROLLED

Downy mildew, leaf spots and rusts, powdery mildew, *Phytophthora* and *Pythium* spp., *Rhizoctonia* spp. (see label for complete list)

RATE / 2 GAL 1 tsp (drench)
RATE / 100 GAL 6 – 12 oz (spray)
4 – 6 oz (drench)

(see label for specific rates)

EPA REG. NO. 73314-1

ACTIVE INGR. Streptomyces lydicus WYEC 108 (0.0371%)

FORMULATION soluble powder

CHEM. FAMILY glucopyranosyl biopesticide antibiotic

FRAC NO. 25 **REI** 1 hour*

PACKAGE SIZE 12 x 18 oz bag

APPLICATION spray, drench, dip

S. lydicus WYEC is a ubiquitous, naturally occurring soil microorganism that colonizes root tips and acts as a mycoparasite. *or until sprays have dried



Adorn®

ADORN®

With a novel mode of action, Adorn® is an excellent addition to fungicide rotations and plays a key role in resistance management programs to defeat downy mildew, *Phytophthora* and *Pythium*.

KEY USES

Bedding and foliage plants, groundcovers, ornamentals, shrubs

KEY DISEASES CONTROLLED

Downy mildew, *Phytophthora* and *Pythium* spp. (see label for complete list)

RATE / 100 GAL 1 – 4 fl oz
(see label for specific rates)

EPA REG. NO. 59639-141

ACTIVE INGR. fluopicolide (39.5%)

FORMULATION flowable

CHEM. FAMILY benzamides

FRAC NO. 43 **REI** 12 hours

PACKAGE SIZE 12 x 1 qt bottle

APPLICATION spray, drench



Affirm™ WDG

AFFIRM™ WDG

Affirm™ WDG is a concentrated, easy-to-mix water-dispersible granule formulation that delivers excellent disease control.

KEY USES

Edibles, ornamentals

KEY DISEASES CONTROLLED

Botrytis, powdery mildew, *Rhizoctonia* (see label for complete list)

RATE / 1 GAL Consult label
(see label for specific rates)

EPA REG. NO. 68173-3-1001

ACTIVE INGR. polyoxin D zinc salt (11.3%)

FORMULATION water-dispersible granules

CHEM. FAMILY polyoxins

FRAC NO. 19 **REI** 4 hours

PACKAGE SIZE 4 x 0.5 lb resealable bag,
3 x 2.4 lb package

APPLICATION spray, drench

Cleary Chemical, LLC is a wholly owned subsidiary of Nufarm.



Agri-Mycin® 50

AGRI-MYCIN® 50

For years, Agri-Mycin® 50 has been the industry standard bactericide. It provides effective, economical control for three to four days. Its specific mode of action is unique to streptomycin and is an essential part of any bacterial disease control program.

KEY USES

Apples, celery, pear, peppers, potatoes, tobacco, tomatoes, tree crops

KEY DISEASES CONTROLLED

Bacterial blight, bacterial speck*, bacterial spot, blue mold, fire blight, soft rot blackleg, wild fire (see label for complete list)

RATE / 5 GAL 1 – 4.5 tsp (spray, dip)
RATE / 100 GAL 4 – 16 oz (spray, dip)
(see label for specific rates)

EPA REG. NO. 55146-98

ACTIVE INGR. streptomycin sulfate (65.8%)
(equivalent to 50% streptomycin base)

FORMULATION wettable powder

CHEM. FAMILY glucopyranosyl

FRAC NO. 25 **REI** 12 hours

PACKAGE SIZE 3 lb bag

APPLICATION spray, dip

*Not registered for use in California



Alude™

ALUDE™

A systemic fungicide, Alude™ provides effective control of various plant diseases.

KEY USES

Annual and perennial flowers, bedding plants, deciduous and evergreen trees and shrubs, foliage plants, groundcovers, vegetable transplants

KEY DISEASES CONTROLLED

Bacterial blight, downy mildew, fire blight, *Phytophthora* and *Pythium* spp. (see label for complete list)

RATE / 1 GAL 1.5 – 3.6 tsp (spray)
0.3 – 0.6 tsp (drench)
RATE / 100 GAL 26 – 54 fl oz (spray)
5 – 10 fl oz (drench)
(see label for specific rates)

EPA REG. NO. 55146-83

ACTIVE INGR. mono- and dibasic sodium, potassium and ammonium phosphites (53.6%)

FORMULATION liquid

CHEM. FAMILY phosphite

FRAC NO. 33 **REI** 4 hours

PACKAGE SIZE 2 x 2.5 gal

APPLICATION spray, drench



www.nufarminsider.com

This guide is intended to provide a product overview. See product labels for complete details and labeled use listing.

Cuproxat® FL

CUPROXAT® FL

Cuproxat® FL premium tri-basic copper fungicide is engineered with uniform particles which deliver better plant coverage and protection against fungal and bacterial diseases.

KEY USES

Greenhouse, shade crops, ornamentals

KEY DISEASES CONTROLLED

Anthrachnose, Botrytis, dieback, downy mildew, leaf spot, powdery mildew, scab, Septoria leaf spot, Volutella leaf blight (see label for complete list)

RATE Consult label

NOW OMRI LISTED® FOR ORGANIC CROP PRODUCTION

EPA REG. NO.	55146-151
ACTIVE INGR.	basic copper sulfate (27.1%)
FORMULATION	flowable
CHEM. FAMILY	inorganic
FRAC NO.	M1
REI	24 hours (greenhouse), 48 hours
PACKAGE SIZE	4 x 1 gal
APPLICATION	spray



Protect™ DF

PROTECT™ DF

Protect™ DF provides excellent control of a variety of important plant diseases.

KEY USES

Field, greenhouse, groundcovers and herbaceous plants, nursery, ornamental and shade trees

KEY DISEASES CONTROLLED

Botrytis, Cercospora (see label for complete list)

RATE Consult label

EPA REG. NO.	1001-77
ACTIVE INGR.	mancozeb (75%)
FORMULATION	dry flowable
CHEM. FAMILY	dithiocarbamate
FRAC NO.	M3
REI	24 hours
PACKAGE SIZE	6 x 6 lb
APPLICATION	spray



Spectro® 90 WDG

SPECTRO® 90 WDG

Spectro® 90 WDG combines two broad-spectrum fungicides to deliver contact and systemic plant disease protection. Spectro 90 WDG prevents and controls disease in annual and perennial flowers, as well as bedding plants, groundcovers and trees and shrubs.

KEY USES

More than 110 ornamental species including annual and perennial flowers, bedding plants, deciduous and evergreen trees and shrubs, foliage plants, groundcovers

KEY DISEASES CONTROLLED

Botrytis, Cercospora, Rhizoctonia (see label for complete list)

RATE Consult label

EPA REG. NO.	1001-72
ACTIVE INGR.	chlorothalonil (72%), thiophanate-methyl (18%)
FORMULATION	water-dispersible granules
CHEM. FAMILY	chloronitriles, thiophanates
FRAC NO.	1 & M5
REI	12 hours
PACKAGE SIZE	4 x 5 lb, 1 x 24 lb pail
APPLICATION	spray



Emblem Spirato® GHN

SPIRATO® GHN

Through all stages of production, Spirato® GHN is a go-to product for foliar, stem and root diseases providing defense and control with low use rates and an easy-to-use liquid formulation. This versatile fungicide demands the number one spot in the rotation for disease management.

KEY USES

More than 45 ornamental species including African violet, aster, azalea, begonia, pansy, petunia, poinsettia, brassica leafy vegetables, leafy vegetables, herbs

KEY DISEASES CONTROLLED

Aerial blight, Alternaria leaf spot and blight, Botrytis blight, black root rot, Cercospora leaf spot, Cylindrocladium stem and root rot, Fusarium stem and root rot, Rhizoctonia stem and root rot, Septoria leaf spot, Southern blight (see label for complete list)

RATE Consult Label

EPA REG. NO.	228-723
ACTIVE INGR.	fludioxonil (40.3%)
FORMULATION	liquid
CHEM. FAMILY	phenylpyrrole
FRAC NO.	12
REI	12 hours
PACKAGE SIZE	8 x 1 pt
APPLICATION	spray, drench



Strider™

STRIDER™

Strider™ is a high-quality fungicide formulation with both preventive and curative modes of action.

KEY USES

Nursery and outdoor ornamentals

KEY DISEASES CONTROLLED

Botrytis, Cercospora, powdery mildew (see label for complete list)

RATE / 100 GAL 2 - 24 oz

(see label for specific rates)

EPA REG. NO.	228-623
ACTIVE INGR.	propiconazole (14.3%)
FORMULATION	liquid
CHEM. FAMILY	triazole
FRAC NO.	3
REI	24 hours
PACKAGE SIZE	4 x 1 gal, 2 x 2.5 gal
APPLICATION	spray





PLANT GROWTH REGULATOR SOLUTIONS

Fascination®

FASCINATION®
Fascination® is an effective tool for more presentable, more marketable Easter and LA hybrid lilies, poinsettias and other ornamentals.

KEY USES
Greenhouse ornamentals including lilies

KEY PERFORMANCE BENEFITS
Delays leaf yellowing, increases flower size and number, prolongs flowering, plant vigor and growth
(see label for complete list)

RATE Consult label

EPA REG. NO.	73049-41
ACTIVE INGR.	benzyladenine (1.8%), gibberellins (1.8%)
FORMULATION	liquid
CHEM. FAMILY	gibberellins
REI	4 hours
PACKAGE SIZE	4 x 0.5 gal case
APPLICATION	spray



RiteWay®

RITWAY®
RiteWay® increases lateral branching and promotes flowering to help improve crop marketability. RiteWay contains 1.9 percent 6-BA and is easy to mix and apply.

KEY USES
Christmas cactus, echinacea, hosta

KEY PERFORMANCE BENEFITS
Increases lateral or basal branching, promotes flowering and reduces overall plant height
(see label for complete list)

RATE / 1 GAL 18 - 540 ml
0.3 - 19.4 oz
50 - 3000 ppm
(see label for specific rates)

EPA REG. NO.	71368-60
ACTIVE INGR.	benzyladenine (6-BA) (1.9%)
FORMULATION	liquid
CHEM. FAMILY	purine
REI	12 hours
PACKAGE SIZE	4 x 1 gal
APPLICATION	spray



Sumagic®

SUMAGIC®
Consistent and reliable, Sumagic® delivers more marketable, attractive and compact ornamentals with an increased shelf life.

KEY USES
Greenhouse

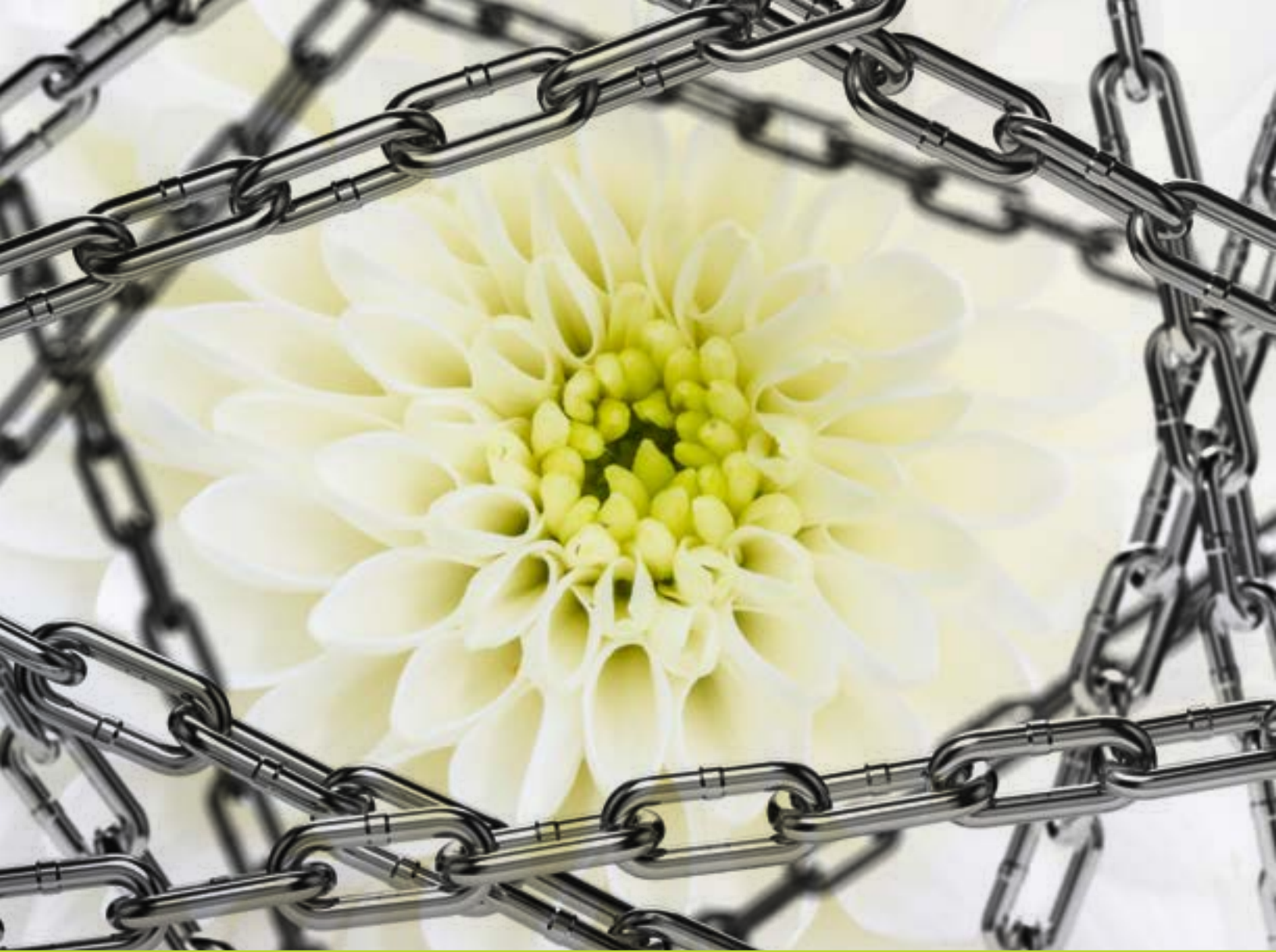
KEY PERFORMANCE BENEFITS
Enhances floral density and foliage color, improves stress tolerance, increases plant shelf life
(see label for complete list)

RATE Consult label

EPA REG. NO.	59639-37
ACTIVE INGR.	uniconazole-P (.055%)
FORMULATION	liquid
CHEM. FAMILY	triazole
REI	12 hours
PACKAGE SIZE	4 x 1 gal, 15 gal drum
APPLICATION	spray



NOTES



LOCK IN PROTECTION. TIMES 2.

At Nufarm, we believe in taking care of your crops every step of the way. Whether the season is just starting or you're getting ready for sale, our complete line of plant protection products has you covered.

For locked-in protection against devastating insect pests, consider drench-applied Safari® Insecticide for lasting residual and TriStar® Insecticide for shorter action as you near delivery dates.

Safari[®]
INSECTICIDE

START STRONG WITH SAFARI.

Safari® is the leading drench/spray insecticide in the market for a good reason: performance. Safari controls more insects faster and longer than any comparable insecticide. It provides excellent control of Q-biotype and B-biotype whiteflies, aphids, fungus gnats, leafhoppers, leafminers, mealybugs, armored scales and soft scales.



TriStar[®]
INSECTICIDE

FINISH STRONGER WITH TRISTAR.

TriStar® the leading midway-to-finish spray insecticide. With its broad-spectrum control and quick knockdown of many challenging insects, TriStar protects plants during their important transition to store shelves. Plus, TriStar is an alternative where pollinator impact is a concern.

INSECTICIDE SOLUTIONS

Nufarm Chlorpyrifos SPC 4

NUFARM CHLORPYRIFOS SPC 4

Achieve consistent, proven control of more than 200 outdoor destructive pests with Nufarm Chlorpyrifos SPC 4. Approved for selective USDA quarantine applications.

KEY USES

Greenhouse and outdoor ornamentals

KEY PESTS CONTROLLED

Ants, armyworms, fleas, mole crickets, ticks, white grubs, wood infesting insects (*see label for complete list*)

RATE

Consult label

EPA REG. NO. 228-624

ACTIVE INGR. chlorpyrifos (44.7%)

FORMULATION liquid

CHEM. FAMILY organophosphate

IRAC NO. 1B REI 24 hours

PACKAGE SIZE 2 x 2.5 gal

APPLICATION spray, drench



Nufarm Chlorpyrifos SPC 4 Insecticide is an EPA Restricted-Use Pesticide. Always read and follow label directions.

DiPel® PRO DF

DIPEL® PRO DF BIOLOGICAL INSECTICIDE

Widely used, DiPel® PRO DF delivers outstanding worm control while being friendly to workers, the environment and beneficial insects.

KEY USES

Landscape, ornamentals

KEY PESTS CONTROLLED

Lepidopterous worms: armyworms, loopers, tent caterpillars, tobacco budworms, various bagworms and many other worms (*see label for complete list*)

RATE / ACRE

0.25 – 2 lb

(*see label for specific rates*)

EPA REG. NO. 73049-39

ACTIVE INGR. *Bacillus thuringiensis* (54%)

FORMULATION dry flowable

CHEM. FAMILY bacillus

IRAC NO. 11A REI 4 hours

PACKAGE SIZE 30 x 1 lb case

APPLICATION spray



Distance®

DISTANCE® IGR

Distance® IGR breaks the life cycle of whiteflies, fungus gnats and other insects, providing growers with a resistance management tool that effectively controls harmful insects.

KEY USES

Greenhouse and outdoor ornamentals, groundcovers, non-bearing fruit trees, shrubs and ornamental trees

KEY PESTS CONTROLLED

Fungus gnats, leafminers, scales, shore flies, whiteflies (*see label for complete list*)

RATE / 100 GAL

6 – 12 fl oz (*spray*)

2 – 6 fl oz (*drench*)

(*see label for specific rates*)

EPA REG. NO. 59639-96

ACTIVE INGR. pyriproxyfen (11.23%)

FORMULATION emulsifiable concentrate

CHEM. FAMILY pyriproxyfen

IRAC NO. 7C REI 12 hours

PACKAGE SIZE 4 x 1 qt tip-n-pour

APPLICATION spray, drench



Gnatrol® WDG

GNATROL® WDG BIOLOGICAL LARVICIDE

Gnatrol® offers highly selective, effective control of fungus gnat larvae, especially for those growers concerned with worker safety, the environment and resistance management.

KEY USES

Edibles, ornamentals, nursery, vegetable plants

KEY PESTS CONTROLLED

Fungus gnat larvae (*see label for complete list*)

RATE / 100 GAL

3.2 – 6.4 oz (*drench*)

13 – 26 oz (*heavy infestation*)

(*see label for specific rates*)

EPA REG. NO. 73049-56

ACTIVE INGR. *Bacillus thuringiensis* (37.4%)

FORMULATION water-dispersible granule

CHEM. FAMILY bacillus

IRAC NO. 11A REI 4 hours

PACKAGE SIZE 16 lb pail

APPLICATION chemigation, drench, drip



GREENHOUSE



EDIBLES



OMRI LISTED



DANGER



WARNING



CAUTION



RESTRICTED-USE



AQUATIC



Mallet® 2F T&O

MALLET® 2F T&O

Mallet® 2F T&O is the economical standard for soil-based insect control programs. Use on indoor and outdoor ornamentals (includes greenhouse and interior plantscapes) for long-residual, upward systemic control of piercing and sucking pests.

KEY USES

Greenhouse and nursery

KEY PESTS CONTROLLED

Aphids, leafminers, mealybugs, scales, whiteflies
(see label for complete list)

RATE Consult label

EPA REG. NO. 228-695

ACTIVE INGR. imidacloprid (21.4%)

FORMULATION liquid

CHEM. FAMILY neonicotinoid

IRAC NO. 4A **REI** 12 hours

PACKAGE SIZE 4 x 1 gal, 2 x 2.5 gal

APPLICATION spray, drench



Mantra® 60 WSP

MANTRA® 60 WSP

Mantra® 60 WSP is a systemic insecticide for greenhouse ornamentals providing long-residual, upward systemic control of piercing and sucking pests.

KEY USES

Greenhouse and nursery

KEY PESTS CONTROLLED

Aphids, mealybugs, whiteflies (see label for complete list)

RATE / 100 GAL 20 gram pack (spray)
(see label for specific rates including drench rates)

EPA REG. NO. 228-681

ACTIVE INGR. imidacloprid (60%)

FORMULATION water-soluble packet

CHEM. FAMILY neonicotinoid

IRAC NO. 4A **REI** 12 hours

PACKAGE SIZE 4 x 4 x (5 x 20 gm) case

APPLICATION spray, drench



Mantra® 1G

MANTRA® 1G

Mantra® 1G is a granular formulation for greenhouse ornamentals providing long-residual, upward systemic control of piercing and sucking pests. An excellent choice for soil media applications.

KEY USES

Ornamental plants in greenhouses, nurseries and interior plantscapes

KEY PESTS CONTROLLED

Aphids, leafminers, mealybugs, scales, whiteflies
(see label for complete list)

RATE / 1000 GAL 15 oz (broadcast)
(see label for specific rates including topical rates)

EPA REG. NO. 228-523

ACTIVE INGR. imidacloprid (1.0%)

FORMULATION granular

CHEM. FAMILY neonicotinoid

IRAC NO. 4A **REI** 12 hours

PACKAGE SIZE 4 x 5 lb, 50 lb drum

APPLICATION spray, drench



Minx™ 2

MINX™ 2

Minx™ 2 delivers broad-spectrum mite and leafminer control in a new low VOC (volatile organic compound) water-based formula.

KEY USES

Greenhouse and nursery ornamentals

KEY PESTS CONTROLLED

Aphids, leafminers, mites, thrips, whiteflies
(see label for complete list)

RATE Consult label

EPA REG. NO. 228-736

ACTIVE INGR. abamectin (2.0%)

FORMULATION microemulsion

CHEM. FAMILY avermectin

IRAC NO. 6 **REI** 12 hours

PACKAGE SIZE 4 x 1 qt, 4 x 1 gal

APPLICATION spray



Overture®

OVERTURE® 35 WP

Due to its novel chemistry, Overture® provides outstanding control of immature adult thrips, even those that are considered tolerant or resistant to other insecticides. Plus, Overture is soft on beneficial insects.

KEY USES

Enclosed commercial greenhouses

KEY PESTS CONTROLLED

Lepidopterous worms, thrips (see label for complete list)

RATE / 100 GAL 8 oz
(see label for specific rates)

EPA REG. NO. 59639-125

ACTIVE INGR. pyridalyl (35%)

FORMULATION wettable powder

CHEM. FAMILY pyridine

IRAC NO. UN **REI** 12 hours

PACKAGE SIZE 8 x 2 oz WSP packet

APPLICATION spray



www.nufarminsider.com

This guide is intended to provide a product overview. See product labels for complete details and labeled use listing.

Safari®

SAFARI® 20 SG

Safari® 20 SG is the market-leading drench/spray insecticide for good reason: performance. It controls a broad-spectrum of ornamental pests faster and longer than any comparable insecticide.

KEY USES

Greenhouse, ornamentals, nursery

KEY PESTS CONTROLLED

Aphids, armored and soft scales, fungus gnats, leafminers, mealybugs, whiteflies (including Q- and B-biotype) and many more (*see label for complete list*)

RATE / 1 GAL 12 – 24 oz (*basal bark*)
RATE / 100 GAL 4 – 8 oz (*spray*)
12 – 24 oz (*drench*)

(*see label for specific rates*)

EPA REG. NO. 86203-11-59639

ACTIVE INGR. dinotefuran (20%)

FORMULATION water soluble granule

CHEM. FAMILY neonicotinoid

IRAC NO. 4A **REI** 12 hours

PACKAGE SIZE 16 x 12 oz bottle, 4 x 3 lb bottle

APPLICATION spray, drench, basal bark



Tame®

TAME® 2.4 EC SPRAY

Tame® delivers broad-spectrum knockdown of numerous insect/mite pest problems and is an excellent tank-mix partner.

KEY USES

Commercial lathhouses, greenhouses, outdoor ornamentals, shadehouses

KEY PESTS CONTROLLED

Aphids, glassy-winged sharpshooters, mites, scales, whiteflies (*see label for complete list*)

RATE Consult label

EPA REG. NO. 59639-77

ACTIVE INGR. fenpropathrin (30.9%)

FORMULATION liquid

CHEM. FAMILY pyrethroid

IRAC NO. 3 **REI** 24 hours

PACKAGE SIZE 12 x 1 qt bottle

APPLICATION spray



Tame® is an EPA Restricted-Use Pesticide. Always read and follow label directions.

TetraSan®

TETRASAN® 5 WDG

With excellent translaminar movement and outstanding residual activity, TetraSan® affects spider mites at all life stages without harming most beneficial insects.

KEY USES

Greenhouse, landscape, nursery

KEY PESTS CONTROLLED

Spider mites (*see label for complete list*)

RATE Consult label

EPA REG. NO. 59639-108

ACTIVE INGR. etoxazole (5%)

FORMULATION water-dispersible granule

CHEM. FAMILY oxazoline

IRAC NO. 10B **REI** 12 hours

PACKAGE SIZE 8 x 2 oz WSP packet

APPLICATION spray



TriStar® 8.5 SL

TRISTAR® 8.5 SL

TriStar® 8.5 SL provides excellent control of a wide range of ornamental pests. Its contact, systemic and translaminar activity provides a fast-acting, low-odor foliar spray for indoor and outdoor ornamentals (includes greenhouse and interior landscapes).

KEY USES

Ornamental and flowering plants grown outdoors and in greenhouses, shadehouses and lathhouses

KEY PESTS CONTROLLED

Aphids, leafminers, mealybugs, scales, thrips, whiteflies (*see label for complete list*)

RATE Consult label

SEE THE PRODUCT LABEL

**EXHIBITS LOWER RISK
TO POLLINATORS**

ACETAMIPRID IS AN EPA CLASSIFIED
REDUCED RISK INSECTICIDE

EPA REG. NO. 8033-106-1001

ACTIVE INGR. acetamiprid (8.5%)

FORMULATION soluble liquid

CHEM. FAMILY neonicotinoid

IRAC NO. 4A **REI** 12 hours

PACKAGE SIZE 8 x 4 oz tip-n-pour, 4 x 1 qt, 4 x 1 gal

APPLICATION spray



NOTES



NON-SELECTIVE HERBICIDE SOLUTIONS

Nufarm

Diquat SPC 2L

NUFARM DIQUAT SPC 2L

Nufarm Diquat SPC 2L herbicide provides non-selective control of aquatic weeds on contact. It spreads through the water for broad-spectrum control and is completely inactivated on contact with soil.

KEY USES

Greenhouse and nursery ornamentals

KEY WEEDS CONTROLLED

Bladderwort, cattail, duckweed, frog's bit, hydrilla, pennywort, water hyacinth, water lettuce, watermilfoils (see label for complete list)

RATE / 15 GAL 16 – 32 fl oz (broadcast)

RATE / 100 GAL 32 – 64 fl oz (spot)

(see label for specific rates)

EPA REG. NO. 228-675

ACTIVE INGR. diquat dibromide (37.3%)

FORMULATION liquid

CHEM. FAMILY bipyridylum

HRAC NO. 22 **REI** 24 hours

PACKAGE SIZE 4 x 1 gal, 2 x 2.5 gal

APPLICATION spray



ProDeuce®

PRODEUCE®

Eliminates existing weeds and prevents new growth in cracks and crevices, along fences and foundations and throughout gravel areas.

KEY USES

On cracks and crevices in driveways, sidewalks, walkways and patios, along fences, foundations, curbs, retaining walls and edges of lawns, around the base or in mulched beds of well-established (at least 6 months old) plants, shrubs or trees, on gravel areas

KEY WEEDS CONTROLLED

Bermudagrass, cheat, chickweed, crabgrass, kochia, lambsquarters, mustard, pigweed, rye, shepherd's-purse, spurge, thistle (see label for complete list)

RATE / 1000 SQ FT 3 – 5.75 oz (broadcast)

(see label for specific rates)

EPA REG. NO. 228-509

ACTIVE INGR. glyphosate (40.15%), prodiamine (7.51%)

FORMULATION liquid

CHEM. FAMILY glycine, dinitroaniline

HRAC NO. 9 & 3 **REI** 12 hours*

PACKAGE SIZE 8 x 64 oz squeeze-and-pour, 4 x 1 gal, 2 x 2.5 gal

APPLICATION spray

*or until sprays have dried



Razor®

RAZOR®

Razor® is a water-soluble glyphosate formulation for broad-spectrum non-selective control of hard-to-kill weeds.

KEY USES

Non-selective weed control, post-emergent

KEY WEEDS CONTROLLED

Many annual and perennial weeds and woody brush (see label for complete list)

RATE / 1 GAL 0.67 – 13 fl oz

RATE / 100 GAL 64 – 320 fl oz

(see label for specific rates)

EPA REG. NO. 228-366

ACTIVE INGR. glyphosate (41%)

FORMULATION liquid

CHEM. FAMILY glycine

HRAC NO. 9 **REI** 4 hours*

PACKAGE SIZE 2 x 2.5 gal, 30 gal

APPLICATION spray

*or until sprays have dried



Razor & Burn®

RAZOR BURN®

Razor Burn® non-selective post-emergence herbicide combines the fast contact activity of diquat with the systemic control of glyphosate in one high-performance liquid formulation.

KEY USES

Non-selective weed control, post-emergent

KEY WEEDS CONTROLLED

Many annual and perennial weeds and woody brush (see label for complete list)

RATE Consult label

EPA REG. NO. 228-446

ACTIVE INGR. glyphosate (41.0%), diquat dibromide (2.1%)

FORMULATION liquid

CHEM. FAMILY glycine derivative, bipyridylum

HRAC NO. 9 & 22

PACKAGE SIZE 8 x 64 oz squeeze-and-pour, 4 x 1 gal

APPLICATION spray



www.nufarminsider.com

This guide is intended to provide a product overview. See product labels for complete details and labeled use listing.

Razor® Pro

RAZOR® PRO

This premium formulation of glyphosate with proprietary surfactants delivers non-selective weed control in a broad range of settings.

KEY USES

Ornamental weed control

KEY WEEDS CONTROLLED

Many annual and perennial weeds and woody brush
(see label for complete list)

RATE

Consult label

EPA REG. NO. 228-366

ACTIVE INGR. glyphosate (41.0%)

FORMULATION liquid

CHEM. FAMILY glycine derivative

HRAC NO. 9 REI 4 hours*

PACKAGE SIZE 5 x 1 gal, 2 x 2.5 gal, 30 gal

APPLICATION spray

*or until sprays have dried



SELECTIVE HERBICIDE SOLUTIONS

Envoy Plus®

ENVOY PLUS®

Envoy Plus® is the most effective post-emergence grass control herbicide. It provides over-the-top control of both annual and perennial grasses with excellent plant safety.

KEY USES

Conifer trees, garden flowers and plants, groundcovers, ornamental trees and shrubs

KEY WEEDS CONTROLLED

Annual and perennial grasses
(see label for complete list)

RATE / 1000 SQ FT 0.4 - 0.8 fl oz

(see label for specific rates)

EPA REG. NO. 59639-132

ACTIVE INGR. clethodim (12.6%)

FORMULATION liquid

CHEM. FAMILY cyclohexene oxime

HRAC NO. 1 REI 24 hours

PACKAGE SIZE 4 x 1 gal

APPLICATION spray



PRE-EMERGE WITH RESIDUAL CONTROL

BroadStar™

BROADSTAR™

BroadStar™ is the best pre-emergence granular herbicide because it controls tough broadleaf and grassy weeds with the longest residual performance.

KEY USES

Container and field grown ornamentals, non-bearing fruit and nut trees and vines, non-crop areas and around buildings, fencerows, gravel surfaces, driveways, ground mats, and other similar sites

KEY WEEDS CONTROLLED

Bittercress, chickweed, common groundsel, liverwort, lambsquarters, oxalis, pigweed, shepherd's-purse, spurge
(see label for complete list)

RATE / ACRE 150 lb

RATE / 1000 SQ FT 3.5 lb

(see label for specific rates)

EPA REG. NO. 59639-128

ACTIVE INGR. flumioxazin (0.25%)

FORMULATION granule

CHEM. FAMILY N-phenylphthalimide

HRAC NO. 14 REI 12 hours

PACKAGE SIZE 50 lb bag

APPLICATION broadcast



Nufarm

Double O™ SPC

DOUBLE O™ SPC

Keep ornamentals free from a broad range of weeds for up to three months with this low-odor and low-dust formulation.

KEY USES

Container-grown ornamentals, field-grown ornamentals and labeled Christmas trees, landscape ornamentals, cut flower and foliage crops

KEY WEEDS CONTROLLED

Chickweed, clover, dandelion, groundsel, lambsquarters, oxalis, pigweed, shepherd's-purse, spurge (garden, hairy, prostrate, spotted)
(see label for complete list)

RATE / ACRE 50 - 100 lbs (broadcast dry)

(see label for specific rates)

EPA REG. NO. 228-632

ACTIVE INGR. oxyfluorfen (2%), oryzalin (1%)

FORMULATION granular

CHEM. FAMILY dinitroaniline, diphenylether

HRAC NO. 3 & 14 REI 24 hours

PACKAGE SIZE 50 lb bag

APPLICATION broadcast



FIELD-GROWN NURSERY



GREENHOUSE



OMRI LISTED



WARNING



RESTRICTED-USE



CONTAINER-GROWN NURSERY



EDIBLES



DANGER



CAUTION



AQUATIC



SureGuard[®]

HERBICIDE

TAKE A CLOSER LOOK AND SEE THE DIFFERENCE

**SUREGUARD[®] AND MARENGO[®] LOOK SIMILAR ON PAPER,
BUT THEY ARE TWO VERY DIFFERENT HERBICIDES.**

Although SureGuard and Marengo are both effective pre-emerge herbicide solutions, they deliver different weed control results. It helps to understand the differences between these tools as they relate to your weed control needs. SureGuard outperforms Marengo when controlling annual winter weeds including bittercress and other mustards. SureGuard also provides post-emerge weed control, empowering you to take down existing weeds while stopping new weeds before they start.

SUREGUARD PERFORMANCE BENEFITS:

- Controls annual winter weeds including bittercress and other mustards
- Provides post-emerge weed control
- Improves glyphosate spectrum and speed
- Better tolerated by cool-season turf
- SureGuard SC now available – same power as SureGuard in a convenient liquid formulation

SUREGUARD VS. MARENGO PERFORMANCE	SUREGUARD	MARENGO
PRE-EMERGE WEED CONTROL	YES	YES
POST-EMERGE WEED CONTROL	YES	NO <small>except a few very small weeds</small>
IMPROVES GLYPHOSATE SPECTRUM WHEN MIXED	YES	NO
IMPROVES GLYPHOSATE SPEED WHEN MIXED	YES	NO
ANNUAL GRASS CONTROL	GOOD	VERY GOOD
SUMMER BROADLEAF WEED CONTROL	VERY GOOD	VERY GOOD
WINTER ANNUAL WEED CONTROL	VERY GOOD	FAIR TO GOOD <small>weak on bittercress and other mustards</small>
ROOT PRUNING HERBICIDE	NO	YES
COOL-SEASON TURFGRASS TOLERANCE (SPRAY APPLICATION)	FAIR TO GOOD	NO
WARM-SEASON TURFGRASS TOLERANCE (SPRAY APPLICATION)	DORMANT ONLY	YES



GROWING BETTER SINCE 1916

More than 100 years ago, our history began with a goal to help New Zealand's farmers.

From New Zealand, we have grown to serve more than 100 countries worldwide.

Today, our founders' passion to help growers through quality solutions and unparalleled customer service remains at the heart of everything we do.

100 YEARS AND STILL GROWING



www.nufarminsider.com

Nufarm Chlorpyrifos SPC 4 and Tame® are EPA Restricted-Use Pesticides. Always read and follow label directions.

©2018 Nufarm. 26/36®, 3336®, Agri-Mycin®, Cuproxat®, Double O™, Mallet®, Mantra®, ProDeuce®, Razor®, Razor Burn®, RiteWay®, and Spirato® are trademarks of Nufarm. Affirm™, Alude™, Minx™, Protect™, Spectro®, Strider™ and Torque™ are trademarks of Cleary Chemical, LLC. TriStar® is a trademark of Nippon Soda Co. Ltd. Adorn®, BroadStar™, Distance®, Envoy Plus®, Overture®, Safari®, SureGuard®, Tame®, TetraSan® and Tourney® are trademarks of Valent U.S.A. LLC. DiPel®, Gnatrol® and Fascination® are trademarks of Valent BioSciences LLC. Sumagic® is a trademark of Sumitomo Chemical Company, Ltd. OMRI® is a trademark of Organic Materials Review Institute. Marengo® is a trademark of Bayer. Actinovate® is a trademark of Novozymes A/S.

14-GHN-0012-M 7/18