



GREGORIAN CHANT 101

*An Introduction to the History and Performance of Gregorian Chant
Class Handouts*

Names	punctum	virga	pes	clivis	torculus	porrectus	climacus	scandicus	quilisma
Modern equivalent	•	•	↵	↵	↵	↵	↵	↵	
French Square Notation	■	┆	┆	┆	■	┆	┆	┆	■
St Gall	- -	/ /	√ √	∩	∩	∩	/ .	! /	- uel
Messine	~ - .	√	√ ~	∩ ~	∩ ~	∩ ~	∩ ~	! /	√
Breton	•	/	√ !	∩ :	∩ ∩	∩	∩ :	! /	√
Aquitanian	• •	∩	∩ !	∩ :	∩ ∩	∩ ∩	∩ :	∩ !	√
Palaeo-Frankish	• -		∩ :	∩ ∩ :	∩	∩	∩ :	∩ !	
Beneventan	•	1	√	∩ ∩	∩	∩	∩ :	∩ !	√

AVE MARIS STELLA (Solemn Tone)

I

A - ve ma-ris stel-la, De- i Ma-ter alma, Atque
semper Virgo, Fe-lix cæ-li porta.

2. Su-mens il-lud A-ve Gabri-é-lis o-re, Funda nos
in pa-ce, Mu-tans He-væ nomen.

3. Sol-ve vincla re- is, Pro-fer lumen cæ-cis: Ma-la no-
stra pelle, Bona cuncta posce.

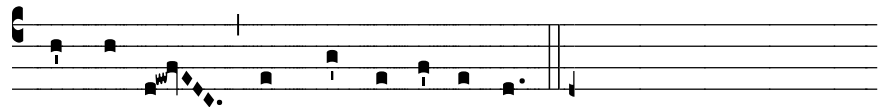
4. Monstra te esse matrem: Sumat per te pre-ces, Qui
pro no-bis na-tus, Tu-lit esse tu- us.

5. Virgo singu-lá-ris, Inter omnes mi- tis, Nos culpis
so-lú-tos, Mi-tes fac et castos.

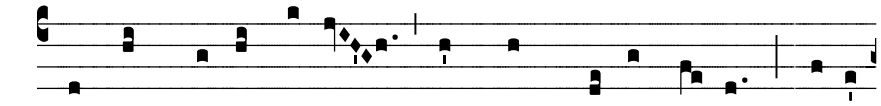
The image displays the musical score for the hymn 'Ave Maris Stella' in a Solemn Tone. It consists of five numbered stanzas, each with a vocal line and a corresponding piano accompaniment line. The notation is in a medieval style, using square neumes on a four-line red staff. The lyrics are written in Latin and are placed below the vocal line. The first stanza begins with a large initial 'A'. The piano accompaniment is written in a simple, rhythmic style, often using a single note per measure. The score is presented in a clean, black-and-white format.



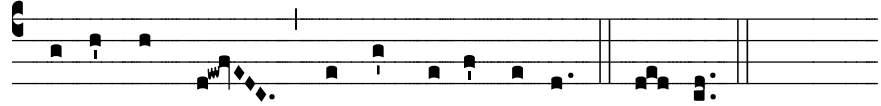
6. Vi-tam præsta pu-ram, I-ter pa-ra tu-tum: Ut vidén-



tes Je-sum, Semper collæ-témur.



7. Sit laus De- o Patri, Summo Christo de-cus, Spi-rí-



tu- i Sancto, Tri-bus honor unus. A-men.

Source: Parish Book of Chant
CMAA 2012
<http://musicasacra.com/pbc/>



FRESCO OF ALTAR IN ST. CLEMENT'S, ROME, XI CENTURY

XVI. c.

5.

G

Ló-ri-a in excélsis Dé-o. Et in térra pax homí-ni-



bus bónae vo-luntá-tis. Laudá-mus te. Benedí-cimus te.



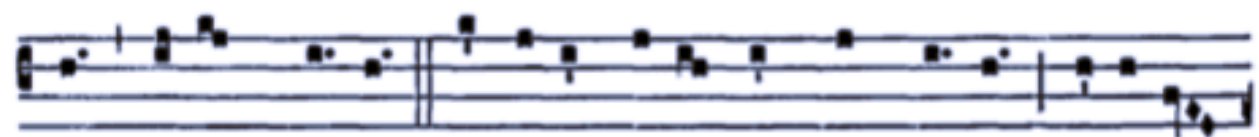
Ado-rá-mus te. Glo-ri-ficá-mus te. Grá-ti-as á-gimus tí-bi



propter má-gnam gló-ri-am tú-am. Dó-mine Dé-us, Rex cae-



lé-stis, Dé-us Pá-ter omní-pot-ens. Dómine Fí-li unigéni-



te Jé-su Chrí-ste. Dómine Dé-us, Agnus Dé-i, Fí-li-us



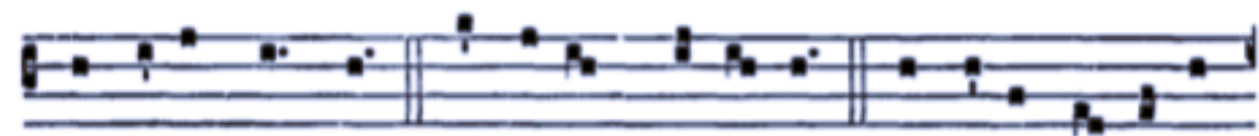
Pá-tris. Qui tóllis peccáta mún-di, mi-se-ré-re nó-bis. Qui



tól-lis peccá-ta mún-di, súscipe depre-ca-ti-ónem nó-stram.



Qui sédes ad délixteram Pá-tris, mi-seré-re nó-bis. Quóni-am



tu só-lus sánctus. Tu só-lus Dómi-nus. Tu só-lus Altíssi-

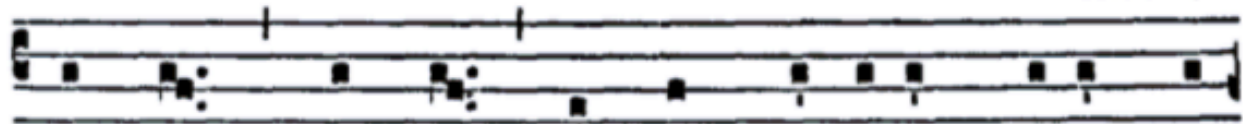


mus, Jé-su Chrí-ste. Cum Sáncto Spí-ri-tu, in gló-ri-a



Dé-i Pá-tris. A-men.

3.

**K**Yri-e * elé- i-son. *ijj.* Chríste elé- i-son. *ijj.* Ký-ri-e elé- i-son. *ij.* Kýri-e * elé- i-son.**S**

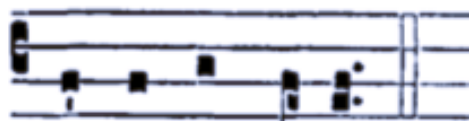
Anctus, * Sánctus, Sánctus Dóminus Dé-us Sá-



ba-oth. Pléni sunt caéli et térra gló-ri- a tú-a. Hosánna in



excélsis. Benedíctus qui vénit in nómine Dómi-ni. Hosán-



na in excélsis.

All

Mor-tem tu - am an - nun - ti - á - mus, Dó - mi - ne, et tu - am

re - sur - re - cti - ó - nem con - fi - té - mur, do - nec — vé - ni - as.

XII. c.

A -gnus Dé-i, * qui tóllis peccá-ta mún-di : mi-se-ré-re

nó-bis. Agnus Dé-i, * qui tóllis peccá-ta mún-di : mi-se-ré-

re nó-bis. Agnus Dé-i, * qui tóllis peccá-ta mún-di : dóna

nó-bis pá-cem.

KYRIE

Capo 3: **(Bm)** Dm **(Em)** Gm **(Bm)** Dm **(Em)** Gm **(Bm)** Dm **(D)** F **(G)** Bb

Ký - ri - e e - lé - i - son. Ký - ri - e e - lé - i - son. Chri - ste ___

(Em7) Gm7 **(D)** F **(G)** Bb **(Em7)** Gm7 **(D)** F **(Bm)** Dm

e - lé - i - son. Chri - ste ___ e - lé - i - son. Ký - ri - e

(Em) Gm **(Bm)** Dm **(Em)** Gm **(Bm)** Dm **(Em)** Gm **(Bm)** Dm

e - lé - i - son. Ký - ri - e e - lé - i - son.

Text: *Graduale Romanum*, 1974.

Music: *Chant Mass; Graduale Romanum*, 1974; guitar acc. © 1995, OCP. All rights reserved.

GLORIA

D Em A D D Em7 F#m A Bm
Gló - ri - a in ex - cél - sis De - o. Et in ter - ra pax ho - mí - ni - bus

Bm G A D A Bm F#m D F#sus4 F#m Gmaj7 A
bo - nae vo - lun - tá - tis. Lau - dá - mus te. Be - ne - dí - ci - mus te.

D Em D D F#m D Asus4
A - do - rá - mus te. Glo - ri - fi - cá - mus te. Grá - ti - as á - gi -

Bm F#m D G A D D Bsus4 Bm
mus ti - bi pro - pter ma - gnam gló - ri - am tu - am. Dó - mi - ne De - us,

Em Bm D F#m Bm F#sus4 F#m
Rex cae - lé - stis, De - us Pa - ter o - mní - pot - ens.

D Em A Bm F#m Em7
Dó - mi - ne Fi - li u - ni - gé - ni - te, Je - su Chri - ste. Dó - mi - ne

F#m Bm G D D Em D Bm F#m Bm F#m
De - us, A - gnus De - i, Fí - li - us Pa - tris. Qui tol - lis pec - cá - ta mun - di,

Text: *Graduale Romanum*, 1974.

Music: *Chant Mass; Chant, Mode V; Graduale Romanum*, 1974; guitar acc. © 1997, OCP. All rights reserved.

D Bm Em Bm Em7 G D

mi - se - ré - re - no - bis. Qui tol - lis pec - cá - ta mun - di,

D F#m Em D F#m G Em7 D

sú - sci - pe de - pre - ca - ti - ó - nem - no - stram.

D G A D Bm Gmaj7 F#m7

Qui se - des ad déx - te - ram Pa - tris, mi - se - ré - re no - bis.

Em7 G D D F#m Gmaj7 A

Quó - ni - am tu so - lus San - ctus. Tu so - lus - Dó - mi - nus.

D Em G D Bm F#m

Tu so - lus Al - tís - si - mus, Je - su Chri - ste.

D Em A Bm Bm Em G

Cum San - cto Spí - ri - tu, in gló - ri - a De - i

G Em7 F#sus4 F#m F#m Em Bm G A7sus4 A7 D

Pa - tris. A - men.

SANCTUS

Em Am Em Am Em Cmaj7 Em
San-ctus, San-ctus, San-ctus Dó-mi-nus De-us Sá-ba-oth.

G Am Em
Ple-ni sunt coe-li et ter-ra gló-ri-a tu-a.

Am Em G Em
Ho-sán-na in ex-cél-sis. Be-ne-dí-ctus qui ve-nit in

Am G Am Em7 Am
nó-mi-ne Dó-mi-ni. Ho-sán-na in ex-cél-sis.

Text: *Graduale Romanum*, 1974.
Music: *Chant Mass; Graduale Romanum*, 1974; guitar acc. © 1995, OCP. All rights reserved.

POST CONSECRATIONEM

Priest: *unaccompanied* or

My-sté - ri - um fí - de - i. My-sté - ri - um fí - de - i.

Em Am F Dm Em

All

Mor-tem tu - am an - nun - ti - á - mus, Dó - mi - ne, et tu - am

Dm Am G C Dm Em Dm E

re - sur - re - cti - ó - nem con - fi - té - mur, do - nec vé - ni - as.

Text: *Graduale Romanum*, 1974.

Music: *Chant Mass; Graduale Romanum*, 1974; guitar acc. © 1997, OCP Publications. All rights reserved.

AMEN

Priest: *unaccompanied*

The musical notation is written on a single staff with a treble clef. It begins with a series of eight quarter notes: G4, A4, B4, C5, B4, A4, G4, and F4. These notes are followed by a half note G4. A double bar line separates this from the second part, which consists of two half notes: G4 and F4. Above the staff, the text 'Priest: unaccompanied' is written. Above the second part of the staff, the chords 'Em' and 'Am' are indicated. Below the staff, the lyrics are: '...per ó - mni - a sae - cu - la sae - cu - ló - rum. A - men. _____'.

Em Am
All

...per ó - mni - a sae - cu - la sae - cu - ló - rum. A - men. _____

Text: *Graduale Romanum*, 1974.

Music: *Chant Mass; Graduale Romanum*, 1974; guitar acc. © 1997, OCP. All rights reserved.

PATER NOSTER

Priest

Am/C G/B G Cmaj7/G C/G

Prae - céptis salutáribus mó - ni - ti, et di - vína instituti - ó - ne for - má - ti,

Em Am/E Gsus2,4 G All Am/G G

au - dé - mus dí - ce - re: Pa - ter no - ster, qui es in cae - lis:

Am/E Em Em/D Am/C Am Am/B G/B

san - cti - fi - cé - tur no - men tu - um; ad - vé - ni - at re - gnum tu - um;

Cmaj7 Em/D Esus4 Em Am/C Cmaj7 C Dsus4 D

fi - at vo - lún - tas tu - a, sic - ut in cae - lo, et in ter - ra.

Em Am/C D6 Am/E Em

Pa - nem no - strum co - ti - di - á - num da no - bis hó - di - e;

F Am/C C Am/C Esus4 Em Fmaj7 Em/G

et di - mít - te no - bis dé - bi - ta no - stra, sic - ut et nos di -

Am/G Gmaj7 Asus4 Am C/B

mít - ti - mus de - bi - tó - ri - bus no - stris; et ne nos in -

Am Fmaj7 C/E Esus4 Em Dm Am/D

dú - cas in ten - ta - ti - ó - nem; sed lí - be - ra nos a ma - lo.

to "Libera nos"
Esus4 Em

Text: *Graduale Romanum*, 1974.

Music: *Chant Mass; Graduale Romanum*, 1974; guitar acc. © 2002, OCP. All rights reserved.

if "Libera nos" is not sung

Em/G G *Fine* Priest Am/C Dm/B G/B

ma - lo. Lí - bera nos, quáesumus, Dómine, ab ó - mni - bus ma - lis,

F Dm/F Am

da pro - pítius pacem in di - é - bus no - stris, ut, ope misericórdiae tuae ad -

F Dm A(no 3) F

iú - ti, et a pec - cáto simus semper lí - be - ri et ab omni perturbati -

Dm/F Esus4 Em Cmaj7 Am/C

ó - ne se - cú - ri: ex - spe - ctán - tes be - á - tam spem

F/A Dm Am/C Em All Am/C

et ad - vén - tum Sal - va - tó - ris no - stri Je - su Chri - sti. Qui - a tu - um est

Dm C/E Am Dm Am/C Em E(no 3) Priest

re - gnum, et po - té - stas, et gló - ri - a in sáe - cu - la. Pax Dó - mi - ni sit

Am/E Esus4 Em All Am/E Asus4 Am Priest (unaccompanied)

sem - per vo - bís - cum. Et cum spí - ri - tu tu - o. Of - fér - te vo - bis pa - cem.

Gregorian Chant Resources:

www.sanctamissa.org

-Information on Gregorian Chant and Liturgical Resources

Historical Resources:

Woods, E. Thomas. *How the Catholic Church Built Western Civilization*, Regnery Publishing Inc.

Taruskin, Richard. "The Origins of Gregorian Chant: Music from the Earliest Notations to the Sixteenth Century", *Oxford History of Western Music*. Available Online:

<https://www.oxfordwesternmusic.com/view/Volume1/actrade-9780195384819-div1-001006.xml>

Vocal Exercises Online:

Jacob's Vocal Academy Youtube Channel:

15 Daily Vocal Warm Up: https://www.youtube.com/watch?v=1f_SVJMRx5s

A Simple Guide to Singing Gregorian Chant:

<https://aleteia.org/2019/01/04/a-simple-guide-to-singing-gregorian-chant/>