

GREY-BRUCE WOODTURNERS GUILD

VOLUME 8 ISSUE 9

DATE: December 2004



The Christmas season is quickly approaching. Have you got your turning projects completed yet?

EXECUTIVE

George Turton and Wayne Brown have had to resign their positions on the Executive for personal reasons.

Jeff Parsons offered to take on the position of vice-president and the membership at November's meeting voted in favour.

2005 Executive is as follows:

President:	Marilyn Campbell
Vice-President:	Jeff Parsons
Secretary:	Lynn Day
Treasurer:	Lambert (Bert) Hogenbirk
Past President:	Ken Goldspink

SHOW AND TELL

We had a good showing at November's meeting with a couple of vases, a container with lid, Christmas decorations and a small bowl. (Photos and descriptions on page 2.)



MEMBERSHIP DUES MEMEBERSHIP INFORMATION

Please see Bert at the next meeting, or contact him by phone or e-mail if you need information on what dues you owe. Some of our members have not brought their membership up to date.

We like to keep our membership list and contact information up to date. If you have moved, changed your phone number or e-mail, please let us know, so our executive can keep you informed on events and information of interest. Newsletters, and other pertinent information is sent by e-mail to our members.



Marilyn Campbell

This box is made of pine, using stave construction. (notice only the outside of the container is turned.) Great idea for new turners! Marilyn put chip carving onto the lid to decorate an otherwise simple container.



Don Mercer

Spalted basswood was used for this small vase.

To take advantage of the colouring in the wood an initial "M" has been chip carved into the circle at the bottom of the vase.

The opening in the vase goes about ½ way in. Great for holding dried flowers!



Don Mercer

This simple bowl has been chip carved around the top rim. This causes some problems because you need to be sure that the pattern will fit properly around the bowl.

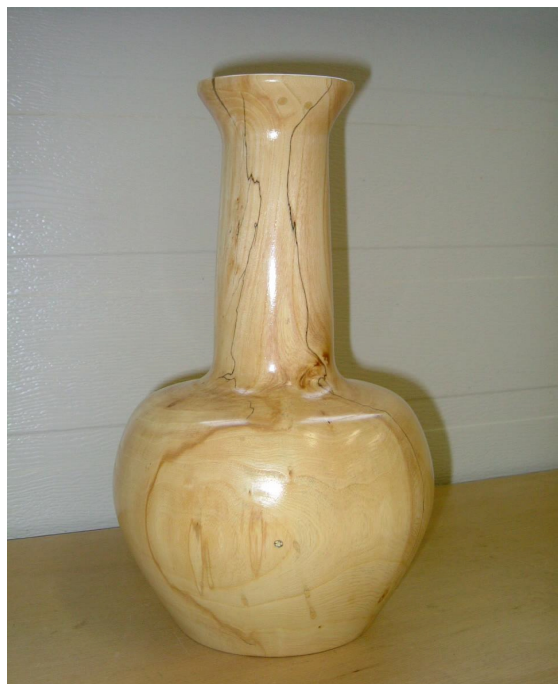
Basswood was used for this project. Carving was done with a knife.



Ivan Franklin

These Christmas ornaments were made in three parts. Different types of wood were used to make the nice contrast we see in the photo.

A forstner bit was used to make the four holes prior to turning the projects.



Ivan Franklin

One piece of spalted maple was used for this vase.

It has been completely hollowed out.

Special tools have been used for the hollowing of this vase and will be demonstrated at the April 2005 meeting, along with some other hollowing techniques.

MONTHLY RAFFLE

We had a scramble with members wanting to have their draw ticket number called first. They were all after the beautiful large pieces of wood you can see in the photo.

Thanks to everyone who brought in donations. Please remember this raffle will only work if the members who win, bring in a donation the following month. (Proceeds to club expenses)



CONSTITUTION of the GREY BRUCE WOODTURNERS GUILD

The proposed revisions to the constitution were voted on and passed by our members at the November meeting. Bert will send them out by e-mail when the updates have been made. For members without e-mail, you will be able to pick up a copy at the monthly meeting.

HABITAT FOR HUMANITY

Habitat for Humanity is planning an auction to raise funds. GBWG members are asked to donate projects to this cause. You can bring your contributions to the club at the December or January meeting. You can contact Ken Goldspink if you would prefer to drop them off at his house. 519-396-3787 or e-mail kengold@bmts.com

WOODTURNING DESIGN MAGAZINE



These magazines are printed 4 times a year and are available from Bert at the meetings.

There are awesome projects and fabulous features for both beginner and experienced turners. An excellent value and they go very quickly.

NOTE FROM THE EDITOR

To fellow turners,

I hope you have enjoyed my attempt at newsletters thus far. If you have any comments or suggestions please feel free to contact me.

Any photos you have for submission should be sent in .jpg format along with a description. Tips and suggestions for turning are always welcome. When sending in submissions please keep in mind it is my hope to have newsletters out by the first of each month.

UPCOMING EVENTS

December 4: Thread Chasing.
Christmas social hour will follow demonstration.

January 15: Vacuum Chucking.
Demo and building a vacuum chucking system.

February 19: Demo of various ways to hold wood for both face plate and spindle turning.

March 19: Green bowl turning

April 16: Hollow turning using Lyle Jamieson laser guided jig. Also a way to build your own jig.

DEMONSTRATION AT NOVEMBER'S MEETING

Jeff Parsons demonstrated the use of stain when making Christmas Decorations and David Plowright turned a large version of a candle stick.



Jeff is turning the tear drop of the Christmas decoration.



Completed Christmas Decoration



This photo shows Jeff turning the top section of the Christmas Decoration. The opening at the end is for the tear drop to be attached.



Dave is getting an ash blank ready to turn into a candle stick.

TIPS WHEN MAKING THIS CHRISTMAS ORNAMENT

If you do not have a chuck to hold the turning you can use a face plate. Drill a hole the size of the tear drop blank in a waste block. Glue the tear drop blank securely into the drilled hole. Now screw the waste block onto the face plate. The blank for the ball section of the ornament will likely fit directly onto the face plate.

The aniline stains are very intense and are available at Lee Valley.