



TOKAY
FOOTBALL

*Guide to Playing
College Football*

Is it for Me?

- Total commitment
- 20+ hours per week on top of academics
- Travel to away games – no weekends
- Competition
- IT'S YOUR LIFE!



The Benefits

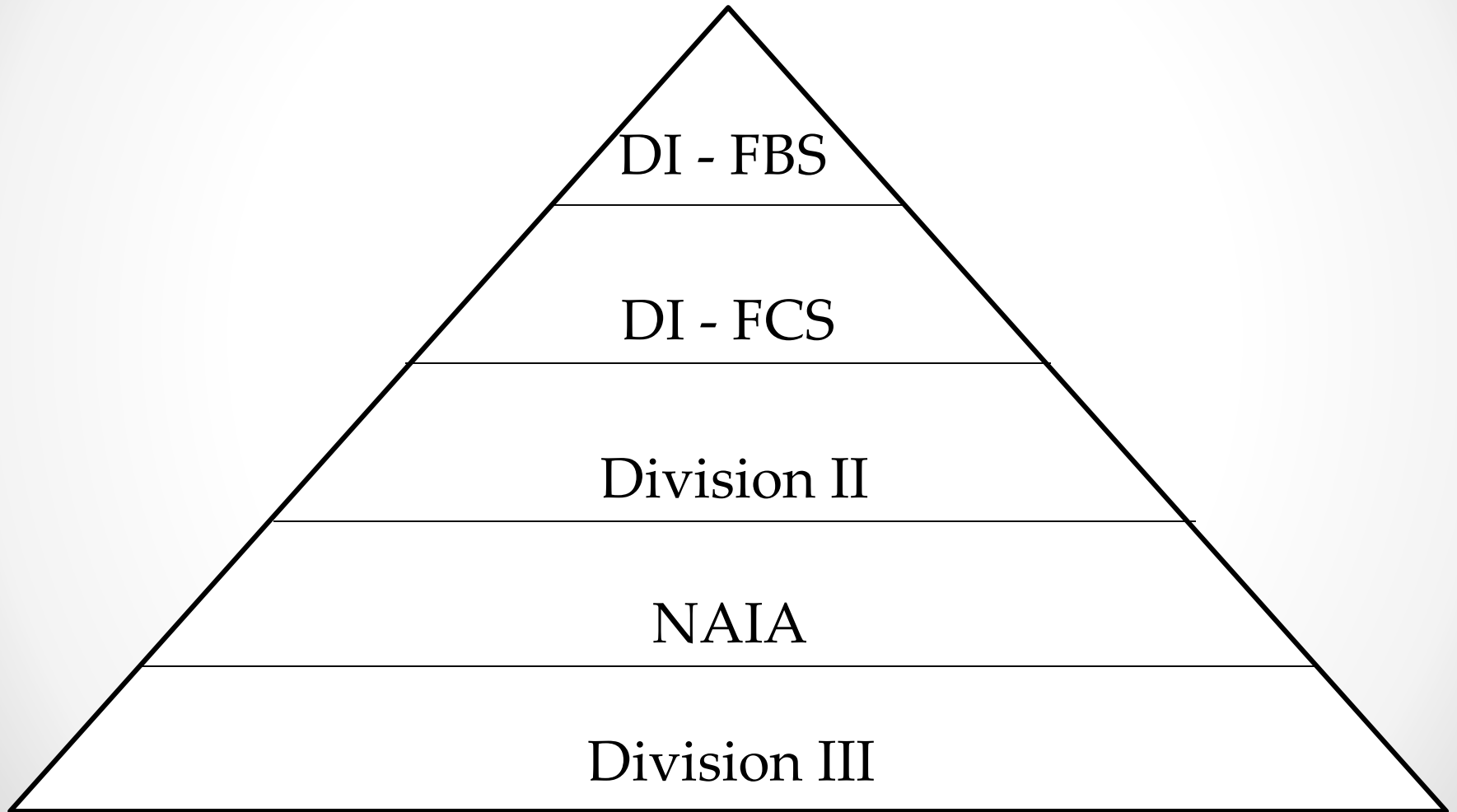
- You will have a group of friends at school immediately
- You will have a network of friends for life
- You will stay more focused academically
- You will continue to learn valuable life lessons
- You will continue to learn more about football



The Process

- Apply to the [NCAA Eligibility Center](#) – for DI & DII
- Apply to the [NAIA Eligibility Center](#)
- Take the [SAT/ACT](#)
- Get an updated unofficial transcript
- [Update your Hudl profile](#)
- [Make your Hudl premium highlight film](#)
- Find your best game film & let Coach Holst know
- Find schools of interest
- Fill out recruiting questionnaires
- If a college coach asks for highlight or game film, contact [Coach Franklin](#) or [Coach Holst](#)

The Hierarchy of College Football



Divison I – FBS Schools in CA

- [Stanford](#)
 - [Cal](#)
 - [San Jose State](#)
 - [Fresno State](#)
 - [USC](#)
 - [UCLA](#)
 - [San Diego State](#)
-
- *20-25 scholarships per year*
 - *85 total scholarships – “full rides”*



Division I - FCS Schools in CA

- [UC Davis](#)
- [Sacramento State](#)
- [Cal Poly](#)
- [University of San Diego](#)



- *15 scholarships per year sometimes split between athletes (up to 30 players per year can be given aid)*
- *63 total scholarships*

Divison I

Academic Requirements

- Must complete 16 core courses
 - 10 of 16 core courses must be completed before 7th semester (senior year)
 - 7 of those 10 core courses must be English, math or natural/physical science
 - 16 core course GPA is compared to ACT/SAT score on Sliding Scale
- 2.3 Core Course GPA
- 2.0-2.29 Core Course GPA is an Academic Redshirt
- ACT score is total score of English + mathematics + reading + science

Divison I

Academic Requirements

- 16 Core Courses
 - 4 years of English
 - 3 years of mathematics (Algebra I or higher)
 - 2 years of natural/physical science
 - 1 year of additional English, mathematics or natural/physical science
 - 2 years of social science
 - 4 years of additional courses
 - From any above area or foreign language or religion/philosophy

NCAA Division I Sliding Scale

Use for Division I beginning August 1, 2016

Core GPA	SAT	ACT
3.550 & above	400	37
3.525	410	38
3.500	420	39
3.475	430	40
3.450	440	41
3.425	450	41
3.400	460	42
3.375	470	42
3.350	480	43
3.325	490	44
3.300	500	44
3.275	510	45
3.250	520	46
3.225	530	46
3.200	540	47
3.175	550	47
3.150	560	48
3.125	570	49
3.100	580	49
3.075	590	50
3.050	600	50
3.025	610	51
3.000	620	52
2.975	630	52
2.950	640	53
2.925	650	53
2.900	660	54
2.875	670	55
2.850	680	56
2.825	690	56
2.800	700	57
2.775	710	58
2.750	720	59
2.725	730	60
2.700	740	61
2.675	750	61
2.650	760	62
2.625	770	63
2.600	780	64
2.575	790	65
2.550	800	66
2.525	810	67
2.500	820	68

2.475	830	69
2.450	840	70
2.425	850	70
2.400	860	71
2.375	870	72
2.350	880	73
2.325	890	74
2.300	900	75
2.299	910	76
2.275	910	76
2.250	920	77
2.225	930	78
2.200	940	79
2.175	950	80
2.150	960	81
2.125	970	82
2.100	980	83
2.075	990	84
2.050	1000	85
2.025	1010	86
2.000	1020	86

ACADEMIC REDSHIRT

Note: To compete in Division I, students enrolling on or after August 1, 2016, must earn a minimum 2.300 GPA in 16 core courses, 10 of which must be completed before the start of the seventh semester (seven of those courses must be in English, math, or natural or physical science, and all 10 courses are "locked in" for purposes of GPA calculation), and must earn a combined SAT or ACT sum score that matches your core-course GPA on the sliding scale above.

Division II Schools in CA

- [Humboldt State University](#)
- [Azusa Pacific University](#)
- *12-15 scholarships per year often split between multiple recruits*
- *36 total scholarships (limited by some conferences)*



I chose
Division II

Division II

Academic Requirements

- 16 Core Courses
 - 3 years of English
 - 2 years of mathematics (Algebra I or higher)
 - 2 years of natural/physical science
 - 3 additional years of English, mathematics or natural/physical science
 - 2 years of social science
 - 4 years of additional courses
 - From any above area or foreign language or religion/philosophy
- Core Course GPA of 2.000 (2.200 for c/o 2018)
- Sliding Scale starts with c/o 2018
- 68 total score on ACT
- 820 combined score on SAT

DIVISION II COMPETITION SLIDING SCALE

Use for Division II beginning August 1, 2018

Core GPA	SAT	
	Verbal + Math ONLY	ACT
3.300 & above	400	37
3.275	410	38
3.250	420	39
3.225	430	40
3.200	440	41
3.175	450	41
3.150	460	42
3.125	470	42
3.100	480	43
3.075	490	44
3.050	500	44
3.025	510	45
3.000	520	46
2.975	530	46
2.950	540	47
2.925	550	47
2.900	560	48
2.875	570	49
2.850	580	49
2.825	590	50
2.800	600	50
2.775	610	51
2.750	620	52
2.725	630	52
2.700	640	53
2.675	650	53
2.650	660	54
2.625	670	55
2.600	680	56
2.575	690	56
2.550	700	57
2.525	710	58
2.500	720	59
2.475	730	60
2.450	740	61
2.425	750	61
2.400	760	62
2.375	770	63
2.350	780	64
2.325	790	65
2.300	800	66
2.275	810	67
2.250	820	68
2.225	830	69
2.200	840 & above	70 & above

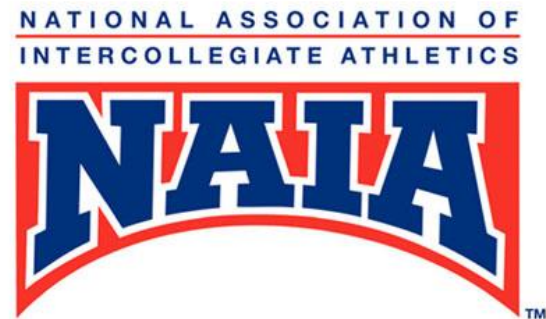
DIVISION II PARTIAL QUALIFIER SLIDING SCALE

Use for Division II beginning August 1, 2018

Core GPA	SAT	
	Verbal + Math ONLY	ACT
3.050 & above	400	37
3.025	410	38
3.000	420	39
2.975	430	40
2.950	440	41
2.925	450	41
2.900	460	42
2.875	470	42
2.850	480	43
2.825	490	44
2.800	500	44
2.775	510	45
2.750	520	46
2.725	530	46
2.700	540	47
2.675	550	47
2.650	560	48
2.625	570	49
2.600	580	49
2.575	590	50
2.550	600	50
2.525	610	51
2.500	620	52
2.475	630	52
2.450	640	53
2.425	650	53
2.400	660	54
2.375	670	55
2.350	680	56
2.325	690	56
2.300	700	57
2.275	710	58
2.250	720	59
2.225	730	60
2.200	740	61
2.175	750	61
2.150	760	62
2.125	770	63
2.100	780	64
2.075	790	65
2.050	800	66
2.025	810	67
2.000	820 & above	68 & above

NAIA Schools in CA

- There are currently no NAIA football-playing schools in California
- *24 scholarships; split between multiple recruits*



NAIA

Academic Requirements

- Must meet 2-of-3
 - 18 or higher composite ACT score or 860 total SAT score (Reading and Math only)
 - 2.0 GPA
 - Graduate in top half of high school class
- Students who have completed their junior year of high school with an overall 3.00 GPA on a 4.00 scale OR students who have completed the first half of senior year with an overall 2.5 GPA on a 4.00 scale, plus the minimum test scores required (18 ACT or 860 SAT), may receive an eligibility decision prior to high school graduation. To receive an early decision, register with the NAIA Eligibility Center, have your high school send official transcripts to the Eligibility Center and contact ACT or SAT to have their test scores sent directly (the NAIA code is 9876 with ACT and SAT).

Division III Schools in CA

- [Occidental College](#)
- [University of Redlands](#)
- [University of LaVerne](#)
- [California Lutheran University](#)
- [Chapman University](#)
- [Claremont-Mudd-Scripps College](#)
- [Whittier College](#)
- [Pomona-Pitzer College](#)

- *No athletic scholarships, only academic aid*



Divison III

Academic Requirements

- Based on each individual university/college
- If you are admitted into the university, you are eligible to play Division III

Other Small Schools in the West

- Oregon
 - Western Oregon – DII
 - Southern Oregon – NAIA
 - Eastern Oregon – NAIA
 - Pacific – DIII
 - George Fox – DIII
 - Linfield – DIII
 - Willamette - DIII
- Arizona
 - Arizona Christian - NAIA

Other schools

- If you don't limit yourselves location-wise, there are endless possibilities
- Sometimes the best move is to get away and get a new experience in a different part of the country
- Is there somewhere you've always wanted to visit? Look into schools there

The Recruiting Calendar

	NCAA FBS	NCAA FCS	NCAA DII	NAIA	NCAA DIII
August	Yellow	Orange	Blue	Blue	Blue
September					
October			Red	Blue	Red
November					
December	Red	SENIORS	Blue	Orange	Orange
January		Blue		Blue	Red
February					
March		Blue	Blue	Blue	Blue
April					
May		Blue	Blue	Blue	Blue
June					
July	Blue	Orange	Blue	Blue	Blue



Very little recruiting efforts made due to vacations, dead periods, or in-season commitments



Information is sent to prospective athletes (most college coaches don't even know who is on their list)



Evaluation periods (summer camps, film evaluations, etc.)



Heavy recruiting, colleges pursue the guys they want

Junior Colleges

- [Delta College](#)
- Plenty of others in immediate area

What school is best for me?

- Be realistic about what level you can play at
 - You may be able to make the team at a higher level, but not see the field
 - Talk with Coach Holst
- Location
- Major
- Campus
- Academic reputation
- Workforce in area
- Success of football program
- Relationship with coaches
- Feeling



How much \$

- The only thing that matters is:

TOTAL COST OF ATTENDANCE

(Tuition + Fees + Room & Board + Books + Supplies + Personal Expenses + Transportation) – (Athletic Scholarships + Academic Scholarships + Private Scholarships)

The remaining money is what you, your parents/guardians, or loans have to cover each year.

**DON'T WORRY ABOUT HOW MUCH MONEY YOU GET FOR FOOTBALL!
CONCENTRATE ON THE TOTAL COST OF ATTENDANCE!**

What's Left?

- There's a lot on your plate
- Continue to perform well academically
- Continue to take part in the Strength & Conditioning program
- If you plan on playing another HS sport, DO IT! You are only in HS once!
- The work you put into the process will be matched by the coaching staff



Resources

- Visit our [website](#) to find information and handouts that relate to the recruitment process

